

Data Path : Z:\pestpcbsrv\HPCHEM1\ECD_P\Data\PP082125\
 Data File : PP074559.D
 Signal(s) : Signal #1: ECD1A.ch Signal #2: ECD2B.ch
 Acq On : 21 Aug 2025 21:21
 Operator : YP\AJ
 Sample : AR1254CCC500
 Misc :
 ALS Vial : 6 Sample Multiplier: 1

Instrument :
 ECD_P
ClientSampleId :
 AR1254CCC500

Manual Integrations
APPROVED

Reviewed By :Yogesh Patel 08/22/2025
 Supervised By :mohammad ahmed 08/25/2025

Integration File signal 1: autoint1.e
 Integration File signal 2: autoint2.e
 Quant Time: Aug 22 00:27:16 2025
 Quant Method : Z:\pestpcbsrv\HPCHEM1\ECD_P\methods\PP081925.M
 Quant Title : GC EXTRACTABLES
 QLast Update : Wed Aug 20 06:20:44 2025
 Response via : Initial Calibration
 Integrator: ChemStation

Volume Inj. : 2 µl
 Signal #1 Phase : ZB-MR1 Signal #2 Phase: ZB-MR2
 Signal #1 Info : 30Mx0.32mmx 0.50µ Signal #2 Info : 30M x 0.32mm x 0.25µm

Compound	RT#1	RT#2	Resp#1	Resp#2	ng/ml	ng/ml

System Monitoring Compounds						
1) SA Tetrachlo...	4.658	3.800	60009402	261.4E6	49.040	54.068
2) SA Decachlor...	10.437	8.814	51204307	358.8E6	51.852	47.851
Target Compounds						
26) L6 AR-1254-1	6.657	5.684	29774405	236.7E6	510.978m	496.452
27) L6 AR-1254-2	6.875	5.830	40313774	182.0E6	493.944	516.722
28) L6 AR-1254-3	7.237	6.233	43570983	329.8E6	488.429	532.085
29) L6 AR-1254-4	7.518	6.458	32257049	235.4E6	489.384	502.320
30) L6 AR-1254-5	7.934	6.876	40991551	249.5E6	493.369	508.731

(f)=RT Delta > 1/2 Window (#)=Amounts differ by > 25% (m)=manual int.

Data Path : Z:\pestpcbsrv\HPCHEM1\ECD_P\Data\PP082125\
 Data File : PP074559.D
 Signal(s) : Signal #1: ECD1A.ch Signal #2: ECD2B.ch
 Acq On : 21 Aug 2025 21:21
 Operator : YP\AJ
 Sample : AR1254CCC500
 Misc :
 ALS Vial : 6 Sample Multiplier: 1

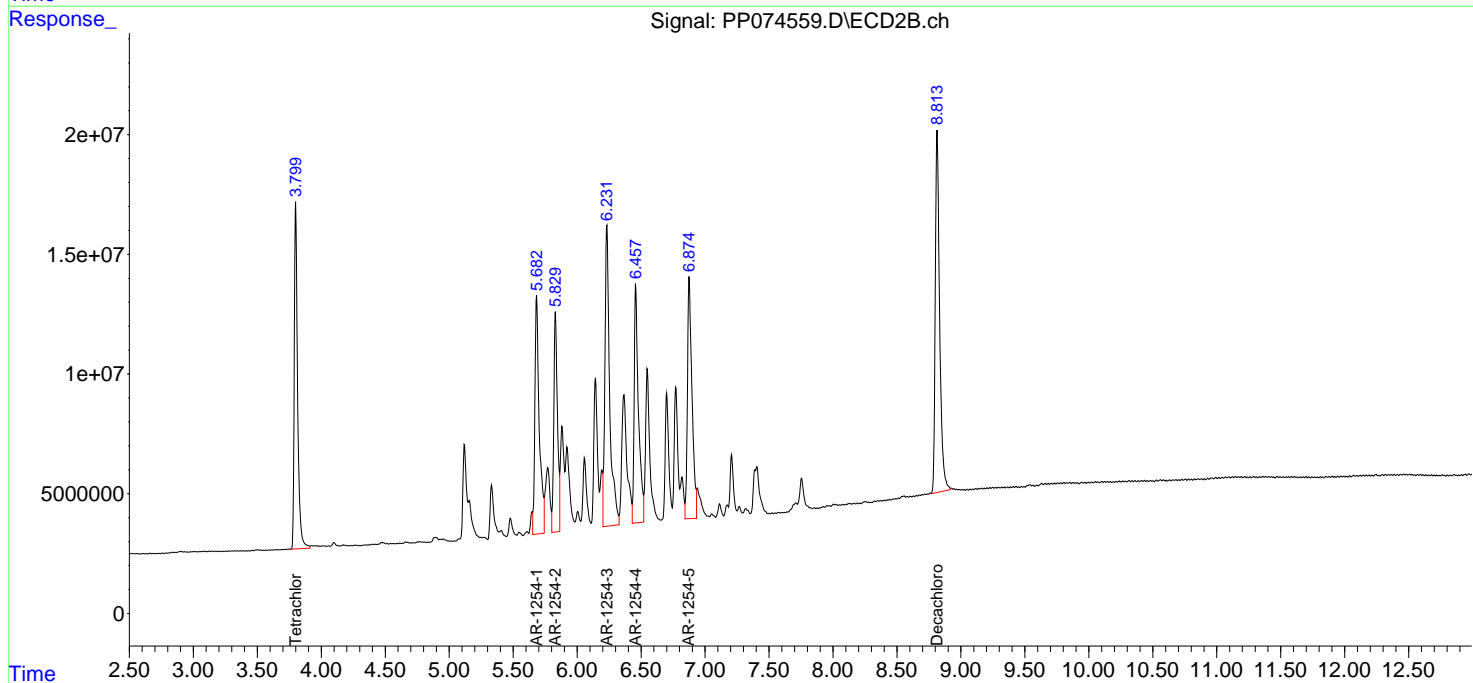
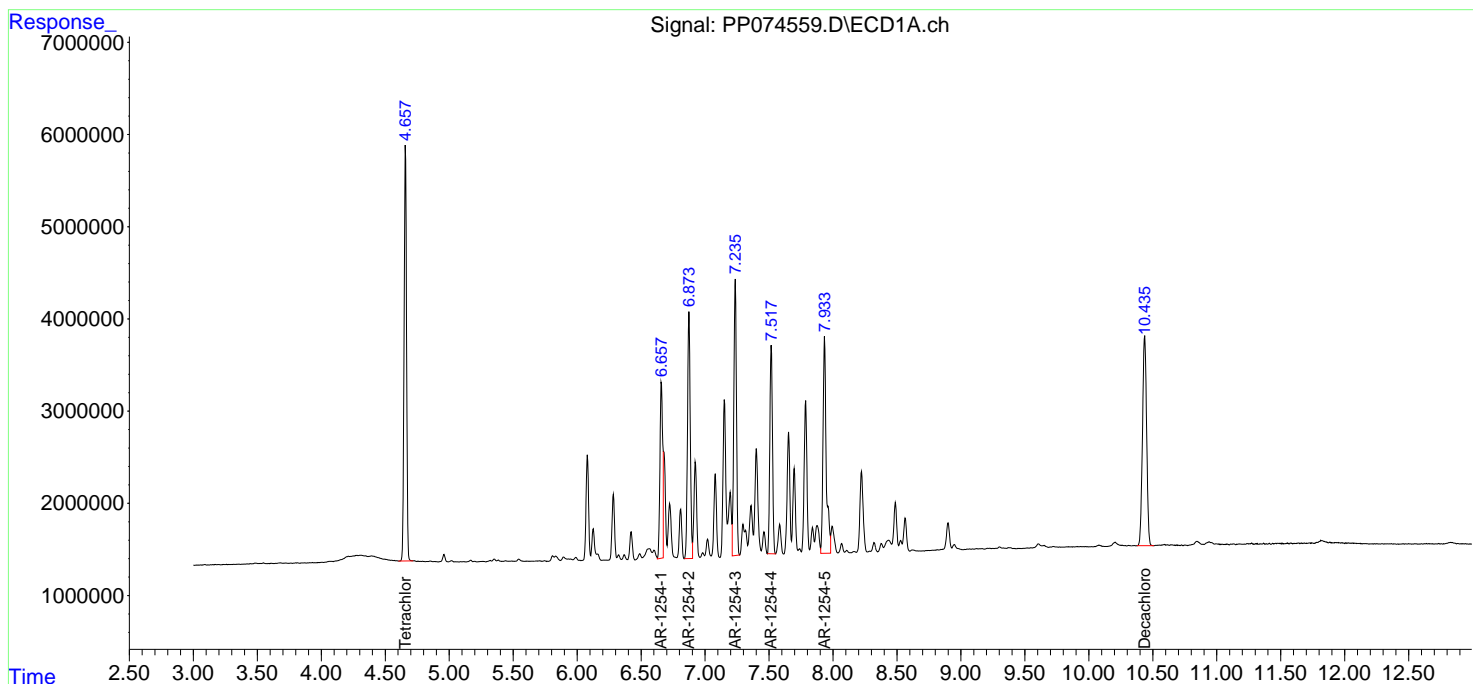
Instrument :
 ECD_P
 ClientSampleId :
 AR1254CCC500

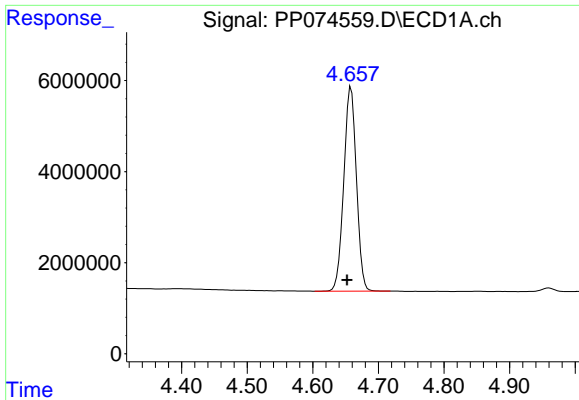
Manual Integrations
 APPROVED

Reviewed By :Yogesh Patel 08/22/2025
 Supervised By :mohammad ahmed 08/25/2025

Integration File signal 1: autoint1.e
 Integration File signal 2: autoint2.e
 Quant Time: Aug 22 00:27:16 2025
 Quant Method : Z:\pestpcbsrv\HPCHEM1\ECD_P\methods\PP081925.M
 Quant Title : GC EXTRACTABLES
 QLast Update : Wed Aug 20 06:20:44 2025
 Response via : Initial Calibration
 Integrator: ChemStation

Volume Inj. : 2 µl
 Signal #1 Phase : ZB-MR1 Signal #2 Phase: ZB-MR2
 Signal #1 Info : 30Mx0.32mmx 0.50µ Signal #2 Info : 30M x 0.32mm x 0.25µm

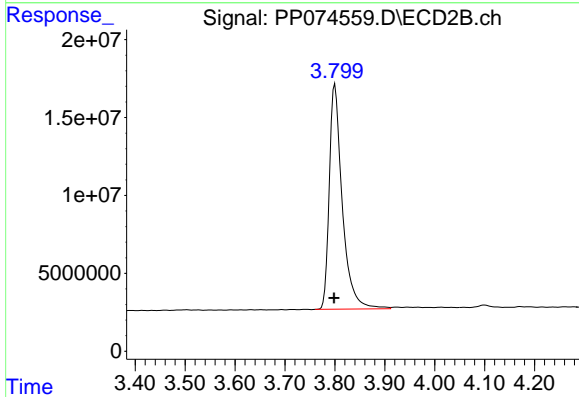




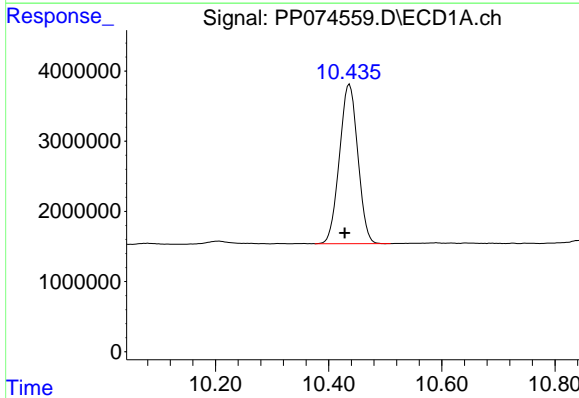
#1 Tetrachloro-m-xylene
 R.T.: 4.658 min
 Delta R.T.: 0.006 min
 Response: 60009402
 Conc: 49.04 ng/ml

Instrument : ECD_P
 ClientSampleId : AR1254CCC500

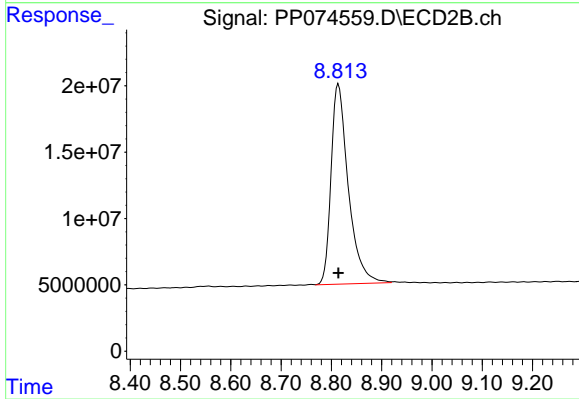
Manual Integrations
APPROVED
 Reviewed By :Yogesh Patel 08/22/2025
 Supervised By :mohammad ahmed 08/25/2025



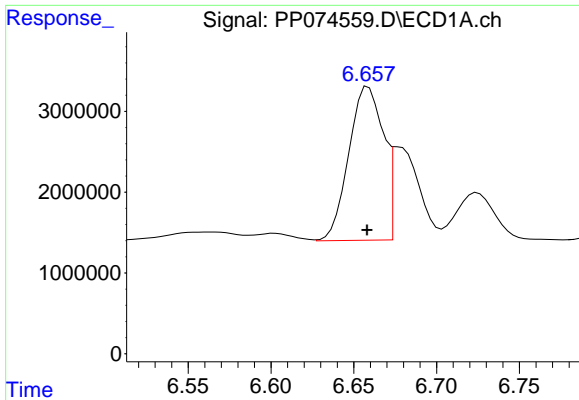
#1 Tetrachloro-m-xylene
 R.T.: 3.800 min
 Delta R.T.: 0.001 min
 Response: 261440560
 Conc: 54.07 ng/ml



#2 Decachlorobiphenyl
 R.T.: 10.437 min
 Delta R.T.: 0.008 min
 Response: 51204307
 Conc: 51.85 ng/ml



#2 Decachlorobiphenyl
 R.T.: 8.814 min
 Delta R.T.: 0.000 min
 Response: 358841056
 Conc: 47.85 ng/ml



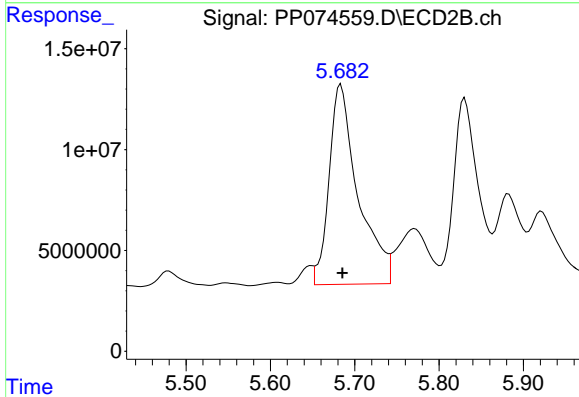
#26 AR-1254-1

R.T.: 6.657 min
 Delta R.T.: 0.000 min
 Response: 29774405
 Conc: 510.98 ng/ml

Instrument :
 ECD_P
 ClientSampleId :
 AR1254CCC500

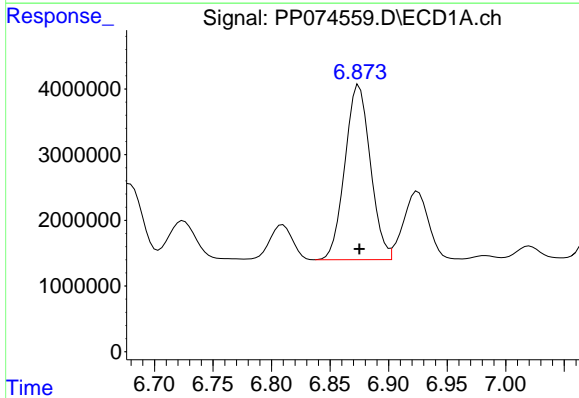
Manual Integrations
 APPROVED

Reviewed By :Yogesh Patel 08/22/2025
 Supervised By :mohammad ahmed 08/25/2025



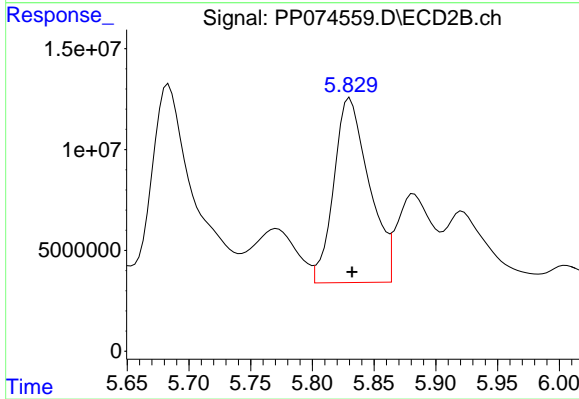
#26 AR-1254-1

R.T.: 5.684 min
 Delta R.T.: -0.002 min
 Response: 236663940
 Conc: 496.45 ng/ml



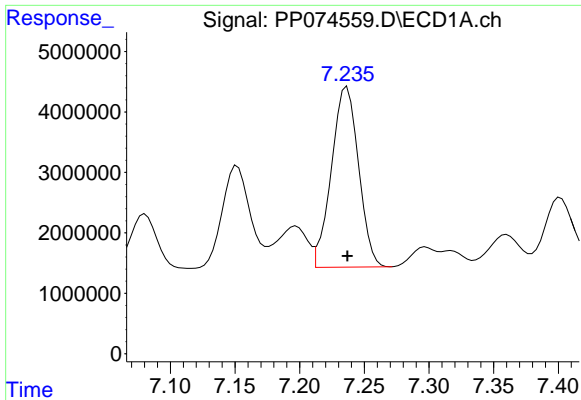
#27 AR-1254-2

R.T.: 6.875 min
 Delta R.T.: 0.000 min
 Response: 40313774
 Conc: 493.94 ng/ml



#27 AR-1254-2

R.T.: 5.830 min
 Delta R.T.: -0.002 min
 Response: 181954723
 Conc: 516.72 ng/ml



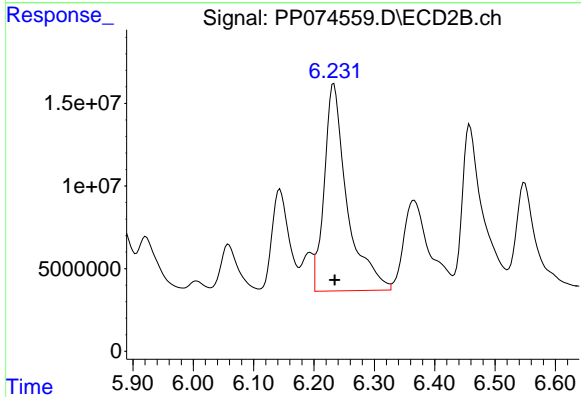
#28 AR-1254-3

R.T.: 7.237 min
 Delta R.T.: 0.000 min
 Response: 43570983
 Conc: 488.43 ng/ml

Instrument :
 ECD_P
 ClientSampleId :
 AR1254CCC500

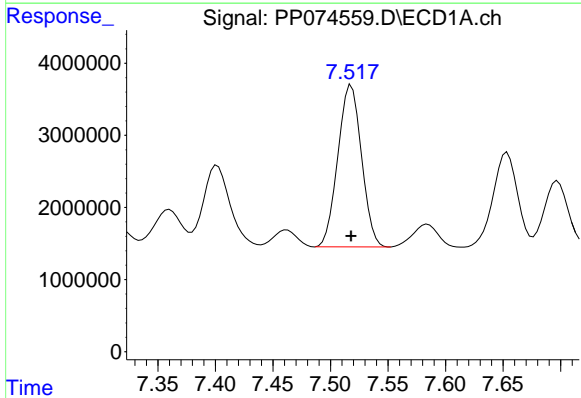
Manual Integrations
 APPROVED

Reviewed By :Yogesh Patel 08/22/2025
 Supervised By :mohammad ahmed 08/25/2025



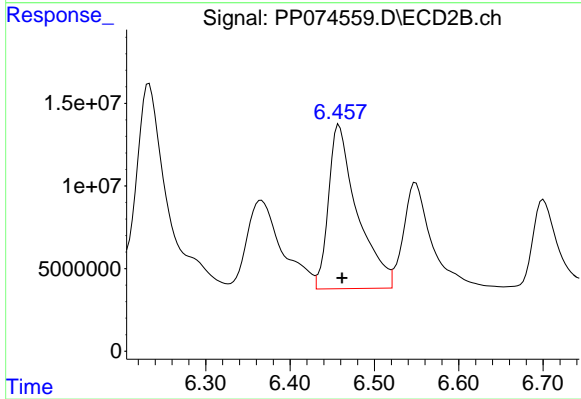
#28 AR-1254-3

R.T.: 6.233 min
 Delta R.T.: -0.002 min
 Response: 329789128
 Conc: 532.08 ng/ml



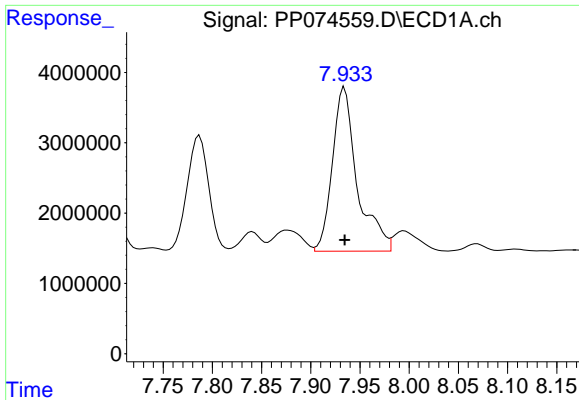
#29 AR-1254-4

R.T.: 7.518 min
 Delta R.T.: 0.000 min
 Response: 32257049
 Conc: 489.38 ng/ml



#29 AR-1254-4

R.T.: 6.458 min
 Delta R.T.: -0.004 min
 Response: 235400596
 Conc: 502.32 ng/ml



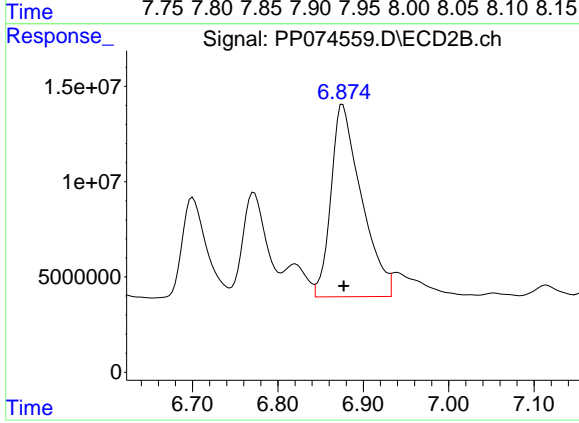
#30 AR-1254-5

R.T.: 7.934 min
 Delta R.T.: 0.000 min
 Response: 40991551
 Conc: 493.37 ng/ml

Instrument :
 ECD_P
 ClientSampleId :
 AR1254CCC500

Manual Integrations
 APPROVED

Reviewed By :Yogesh Patel 08/22/2025
 Supervised By :mohammad ahmed 08/25/2025



#30 AR-1254-5

R.T.: 6.876 min
 Delta R.T.: -0.001 min
 Response: 249532951
 Conc: 508.73 ng/ml