

Data Path : Z:\pestpcbsrv\HPCHEM1\ECD_P\Data\PP082224\
 Data File : PP066804.D
 Signal(s) : Signal #1: ECD1A.ch Signal #2: ECD2B.ch
 Acq On : 22 Aug 2024 14:02
 Operator : YP\AJ
 Sample : P3701-18
 Misc :
 ALS Vial : 15 Sample Multiplier: 1

Instrument :
 ECD_P
 ClientSampleId :
 18

Integration File signal 1: autoint1.e
 Integration File signal 2: autoint2.e
 Quant Time: Aug 22 14:24:00 2024
 Quant Method : Z:\pestpcbsrv\HPCHEM1\ECD_P\methods\PP082024.M
 Quant Title : GC EXTRACTABLES
 QLast Update : Wed Aug 21 05:19:45 2024
 Response via : Initial Calibration
 Integrator: ChemStation

Volume Inj. : 2 µl
 Signal #1 Phase : ZB-MR1 Signal #2 Phase: ZB-MR2
 Signal #1 Info : 30Mx0.32mmx 0.50µ Signal #2 Info : 30M x 0.32mm x 0.25µm

Compound	RT#1	RT#2	Resp#1	Resp#2	ng/ml	ng/ml

System Monitoring Compounds						
1) SA Tetrachlo...	4.704	3.983	27398100	19849423	18.502	15.181
2) SA Decachlor...	10.624	9.145	20217435	15302485	23.038	18.369
Target Compounds						
3) L1 AR-1016-1	5.878	5.085	753920	1292409	17.689	32.239 #
4) L1 AR-1016-2	5.908	5.126f	5083642	864404	75.989	14.506 #
5) L1 AR-1016-3	5.937f	5.305f	1645979	795054	38.888	26.597 #
6) L1 AR-1016-4	6.066	5.346f	991454	632418	30.387	24.133
7) L1 AR-1016-5	6.363	5.568f	2611149	3710417	82.332	114.263 #
8) L2 AR-1221-1	4.913	4.170f	1823095	126781	107.730	8.357 #
9) L2 AR-1221-2	5.012	4.291	1828110	259554	147.427	22.115 #
10) L2 AR-1221-3	5.074	4.348	1919481	2061772	50.581	56.574
11) L3 AR-1232-1	5.074	4.348	1919481	2061772	60.356	67.280
12) L3 AR-1232-2	5.597	5.085f	1584737	1292409	91.492	47.899 #
13) L3 AR-1232-3	5.908	5.305f	5083642	795054	168.400	59.283 #
14) L3 AR-1232-4	6.066	5.372	991454	580355	67.318	45.149 #
15) L3 AR-1232-5	6.141	5.568f	715741	3710417	60.296	267.921 #
16) L4 AR-1242-1	5.878	5.085	753920	1292409	23.379	42.124 #
17) L4 AR-1242-2	5.908	5.126f	5083642	864404	100.451	19.077 #
18) L4 AR-1242-3	5.937f	5.305f	1645979	795054	52.090	34.037 #
19) L4 AR-1242-4	6.066	5.372	991454	580355	40.010	23.064 #
20) L4 AR-1242-5	6.809	5.908	7249346	1064583	288.494	37.636 #
21) L5 AR-1248-1	5.878	5.085	753920	1292409	29.498	53.380 #
22) L5 AR-1248-2	6.141	5.346f	715741	632418	17.813	17.510
23) L5 AR-1248-3	6.363	5.372	2611149	580355	59.886	15.545 #
24) L5 AR-1248-4	6.757	5.568f	3602393	3710417	81.546	84.092
25) L5 AR-1248-5	6.809	5.939	7249346	2164517	158.133	57.301 #
26) L6 AR-1254-1	6.757f	5.908	3602393	1064583	72.971	17.771 #
27) L6 AR-1254-2	6.954	6.058	5285614	3423369	72.446	64.059
28) L6 AR-1254-3	7.322	6.468	5766075	5425485	82.526	68.613
29) L6 AR-1254-4	7.606	6.699	7032962	4461773	157.963	110.365 #
30) L6 AR-1254-5	8.026	7.123	10742691	9617201	162.040	149.624
31) L7 AR-1260-1	7.485	6.601	3830210	3095863	68.349	52.379
32) L7 AR-1260-2	7.740	6.788	6201641	4979987	97.413	73.087
33) L7 AR-1260-3	8.092	6.946	1628268	3260045	36.614	50.175 #
34) L7 AR-1260-4	8.327	7.424	4041223	646042	76.568	14.345 #
35) L7 AR-1260-5	8.676	7.665	2411232	866486	27.107	8.979 #
36) L8 AR-1262-1	8.026	7.123	10742691	9617201	237.929	300.873 #
37) L8 AR-1262-2	8.676	7.424	2411232	646042	22.081	10.361 #
38) L8 AR-1262-3	9.029f	7.946	611065	41923	8.607	0.937 #
39) L8 AR-1262-4	9.111	8.016	112907	492325	1.935	5.938 #
41) L9 AR-1268-1	9.029f	7.946	611065	41923	4.876	0.335 #
42) L9 AR-1268-2	9.111	8.016	112907	492325	1.024	4.251 #

Data Path : Z:\pestpcbsrv\HPCHEM1\ECD_P\Data\PP082224\
 Data File : PP066804.D
 Signal(s) : Signal #1: ECD1A.ch Signal #2: ECD2B.ch
 Acq On : 22 Aug 2024 14:02
 Operator : YP\AJ
 Sample : P3701-18
 Misc :
 ALS Vial : 15 Sample Multiplier: 1

Instrument :
 ECD_P
 ClientSampleId :
 18

Integration File signal 1: autoint1.e
 Integration File signal 2: autoint2.e
 Quant Time: Aug 22 14:24:00 2024
 Quant Method : Z:\pestpcbsrv\HPCHEM1\ECD_P\methods\PP082024.M
 Quant Title : GC EXTRACTABLES
 QLast Update : Wed Aug 21 05:19:45 2024
 Response via : Initial Calibration
 Integrator: ChemStation

Volume Inj. : 2 µl
 Signal #1 Phase : ZB-MR1 Signal #2 Phase: ZB-MR2
 Signal #1 Info : 30Mx0.32mmx 0.50µ Signal #2 Info : 30M x 0.32mm x 0.25µm

	Compound	RT#1	RT#2	Resp#1	Resp#2	ng/ml	ng/ml
43)	L9 AR-1268-3	9.334f	8.259f	29702	66040	0.299	0.663 #
45)	L9 AR-1268-5	10.263	8.879f	177273	334620	0.622	1.152 #

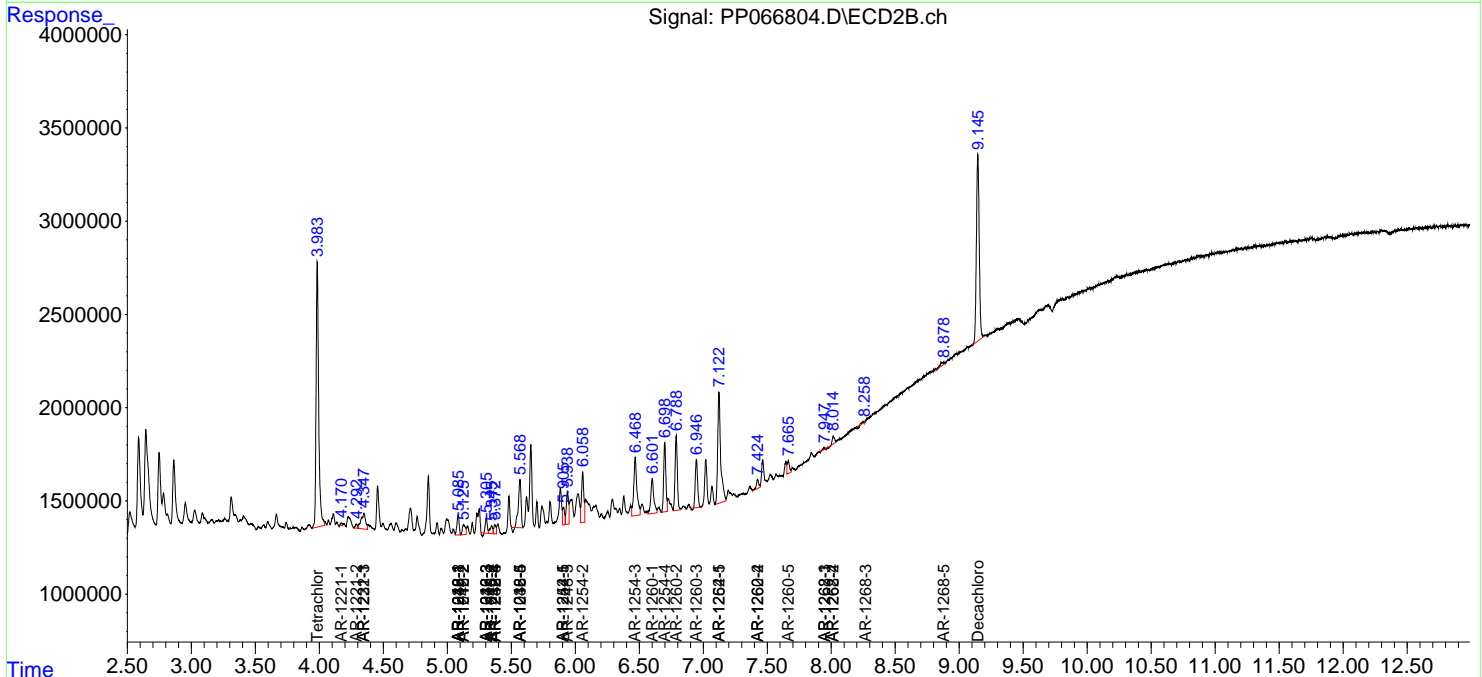
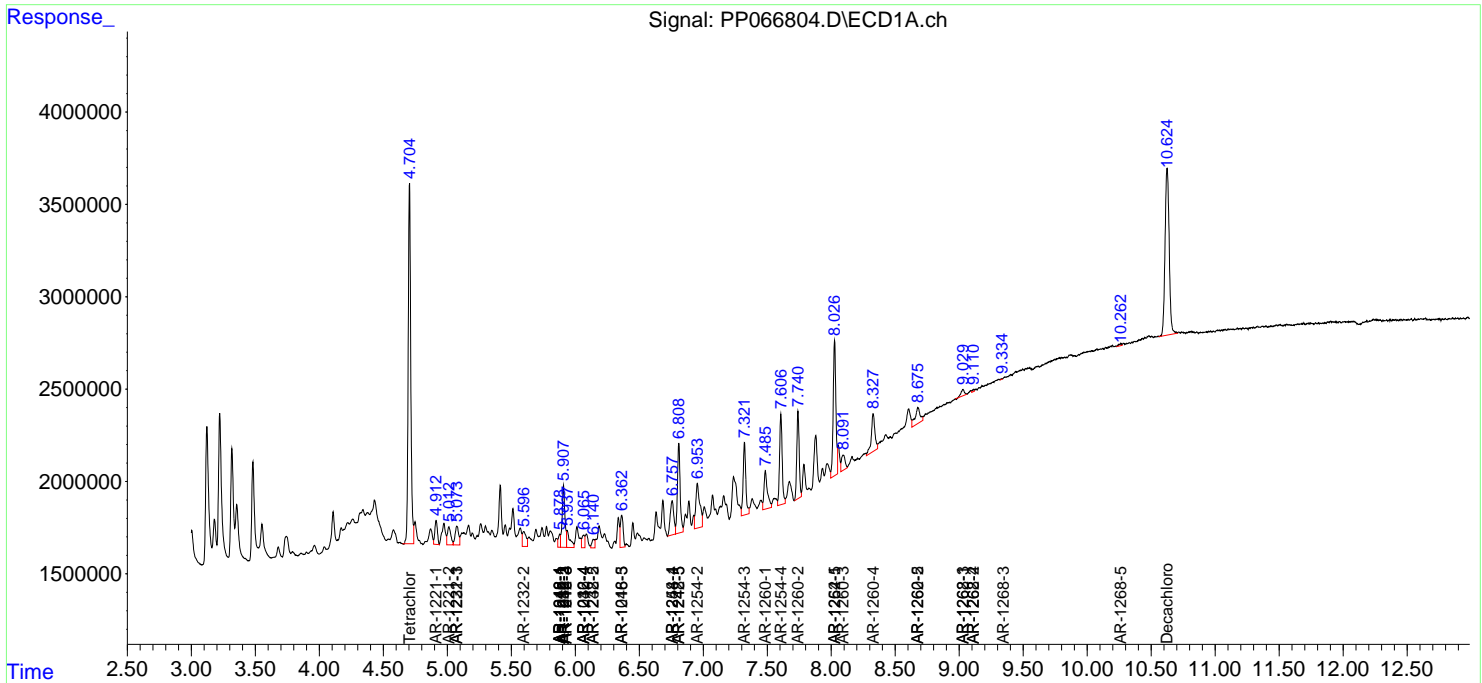
(f)=RT Delta > 1/2 Window (#)=Amounts differ by > 25% (m)=manual int.

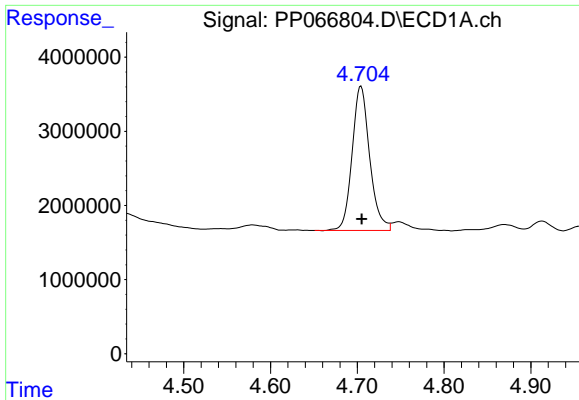
Data Path : Z:\pestpcbsrv\HPCHEM1\ECD_P\Data\PP082224\
 Data File : PP066804.D
 Signal(s) : Signal #1: ECD1A.ch Signal #2: ECD2B.ch
 Acq On : 22 Aug 2024 14:02
 Operator : YP\AJ
 Sample : P3701-18
 Misc :
 ALS Vial : 15 Sample Multiplier: 1

Instrument :
 ECD_P
 ClientSampleId :
 18

Integration File signal 1: autoint1.e
 Integration File signal 2: autoint2.e
 Quant Time: Aug 22 14:24:00 2024
 Quant Method : Z:\pestpcbsrv\HPCHEM1\ECD_P\methods\PP082024.M
 Quant Title : GC EXTRACTABLES
 QLast Update : Wed Aug 21 05:19:45 2024
 Response via : Initial Calibration
 Integrator: ChemStation

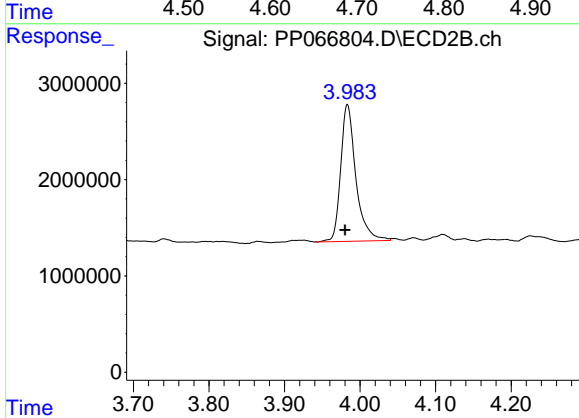
Volume Inj. : 2 µl
 Signal #1 Phase : ZB-MR1 Signal #2 Phase: ZB-MR2
 Signal #1 Info : 30Mx0.32mmx 0.50µ Signal #2 Info : 30M x 0.32mm x 0.25µm



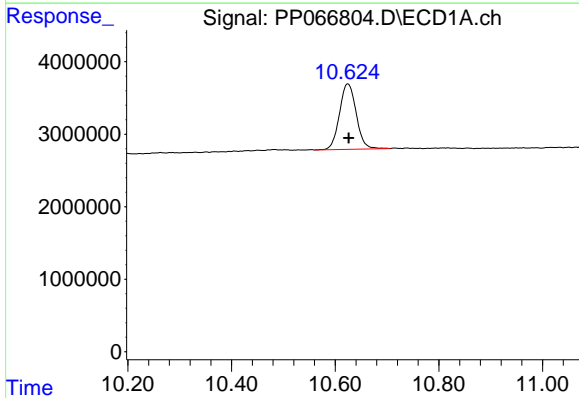


#1 Tetrachloro-m-xylene
 R.T.: 4.704 min
 Delta R.T.: 0.000 min
 Response: 27398100
 Conc: 18.50 ng/ml

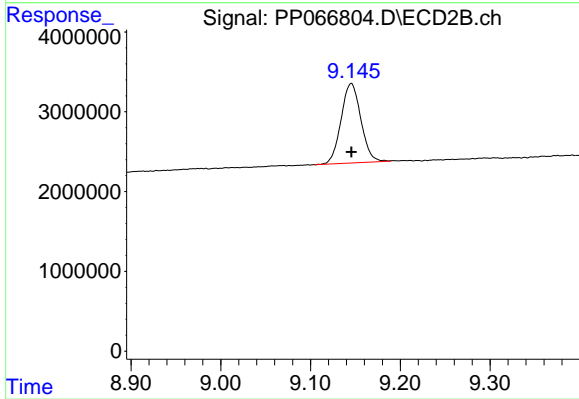
Instrument :
 ECD_P
 ClientSampleId :
 18



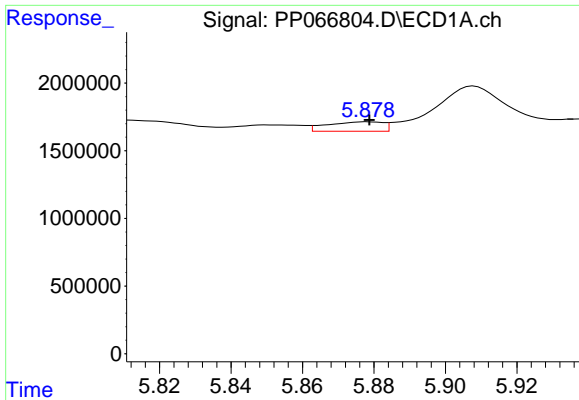
#1 Tetrachloro-m-xylene
 R.T.: 3.983 min
 Delta R.T.: 0.003 min
 Response: 19849423
 Conc: 15.18 ng/ml



#2 Decachlorobiphenyl
 R.T.: 10.624 min
 Delta R.T.: -0.002 min
 Response: 20217435
 Conc: 23.04 ng/ml



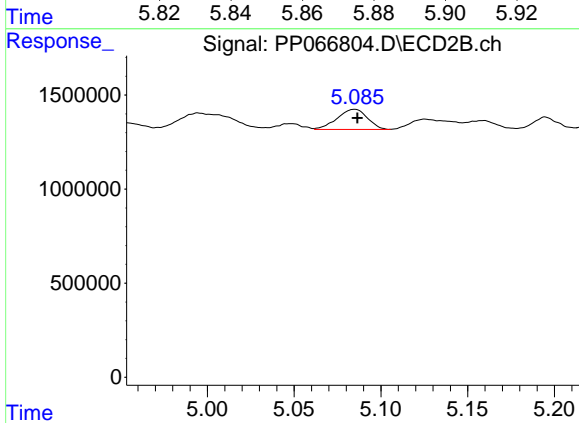
#2 Decachlorobiphenyl
 R.T.: 9.145 min
 Delta R.T.: 0.000 min
 Response: 15302485
 Conc: 18.37 ng/ml



#3 AR-1016-1

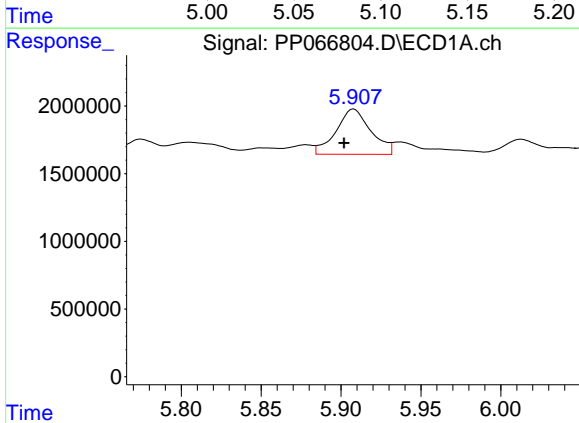
R.T.: 5.878 min
 Delta R.T.: 0.000 min
 Response: 753920
 Conc: 17.69 ng/ml

Instrument :
 ECD_P
 ClientSampleId :
 18



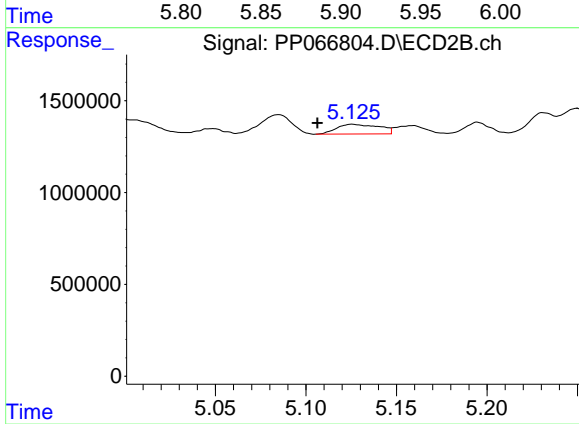
#3 AR-1016-1

R.T.: 5.085 min
 Delta R.T.: -0.002 min
 Response: 1292409
 Conc: 32.24 ng/ml



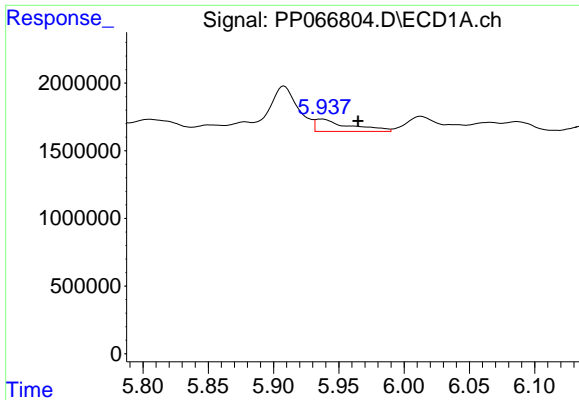
#4 AR-1016-2

R.T.: 5.908 min
 Delta R.T.: 0.006 min
 Response: 5083642
 Conc: 75.99 ng/ml



#4 AR-1016-2

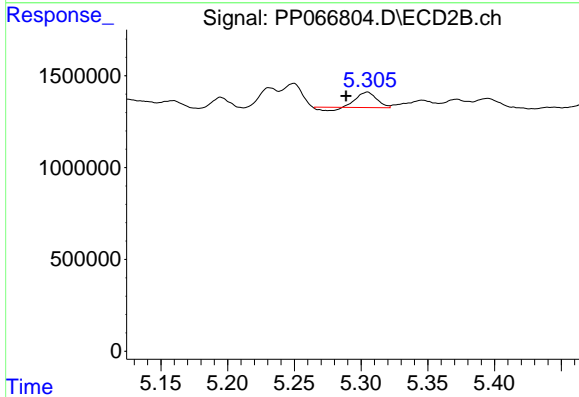
R.T.: 5.126 min
 Delta R.T.: 0.019 min
 Response: 864404
 Conc: 14.51 ng/ml



#5 AR-1016-3

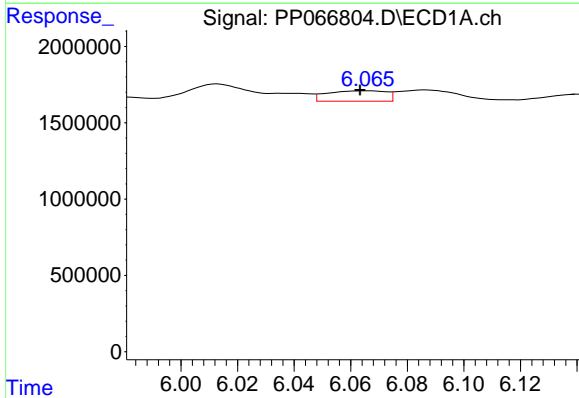
R.T.: 5.937 min
 Delta R.T.: -0.028 min
 Response: 1645979
 Conc: 38.89 ng/ml

Instrument :
 ECD_P
 ClientSampleId :
 18



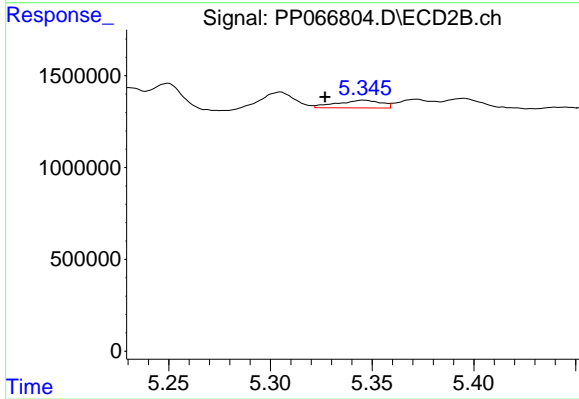
#5 AR-1016-3

R.T.: 5.305 min
 Delta R.T.: 0.016 min
 Response: 795054
 Conc: 26.60 ng/ml



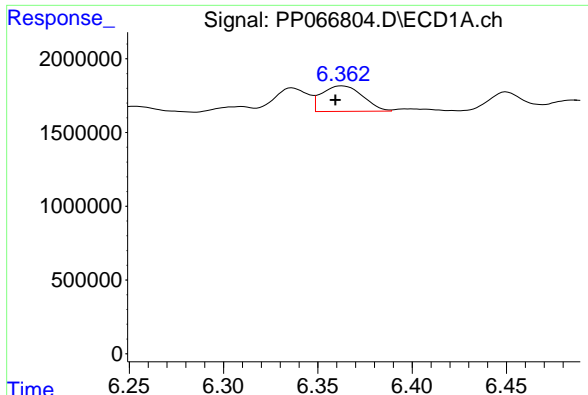
#6 AR-1016-4

R.T.: 6.066 min
 Delta R.T.: 0.003 min
 Response: 991454
 Conc: 30.39 ng/ml



#6 AR-1016-4

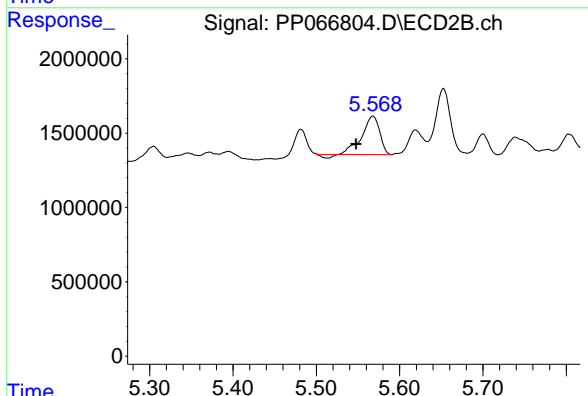
R.T.: 5.346 min
 Delta R.T.: 0.019 min
 Response: 632418
 Conc: 24.13 ng/ml



#7 AR-1016-5

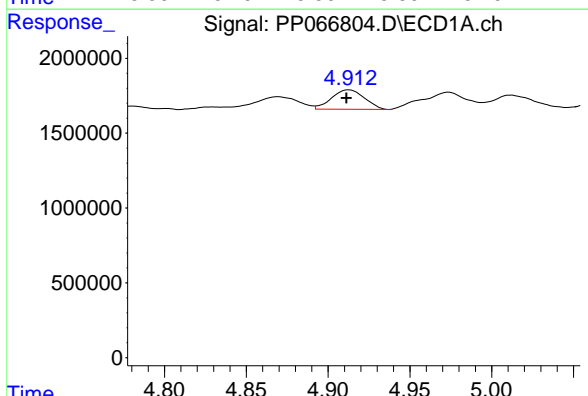
R.T.: 6.363 min
 Delta R.T.: 0.003 min
 Response: 2611149
 Conc: 82.33 ng/ml

Instrument :
 ECD_P
 ClientSampleId :
 18



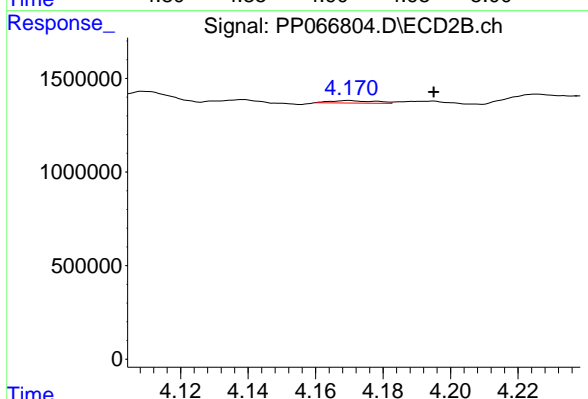
#7 AR-1016-5

R.T.: 5.568 min
 Delta R.T.: 0.020 min
 Response: 3710417
 Conc: 114.26 ng/ml



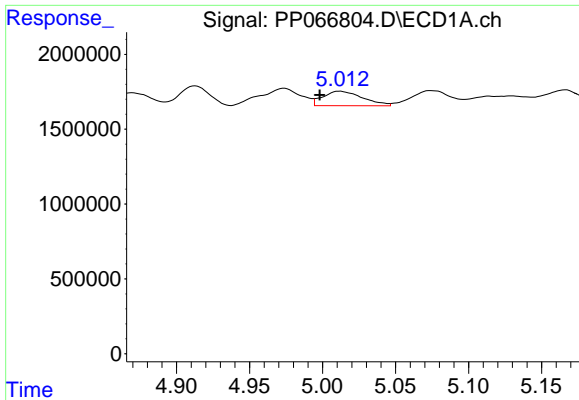
#8 AR-1221-1

R.T.: 4.913 min
 Delta R.T.: 0.002 min
 Response: 1823095
 Conc: 107.73 ng/ml



#8 AR-1221-1

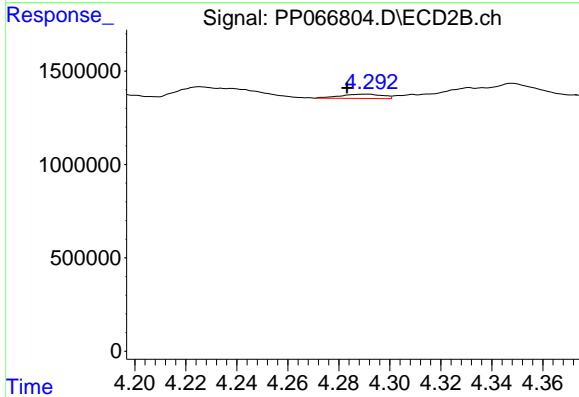
R.T.: 4.170 min
 Delta R.T.: -0.025 min
 Response: 126781
 Conc: 8.36 ng/ml



#9 AR-1221-2

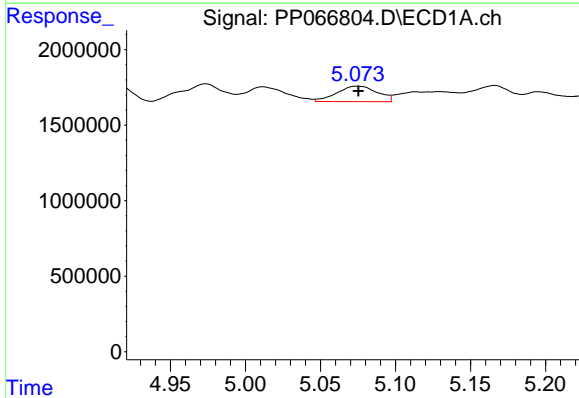
R.T.: 5.012 min
 Delta R.T.: 0.014 min
 Response: 1828110
 Conc: 147.43 ng/ml

Instrument :
 ECD_P
 ClientSampleId :
 18



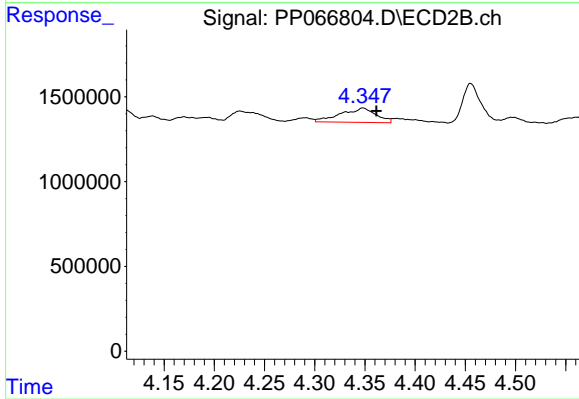
#9 AR-1221-2

R.T.: 4.291 min
 Delta R.T.: 0.007 min
 Response: 259554
 Conc: 22.11 ng/ml



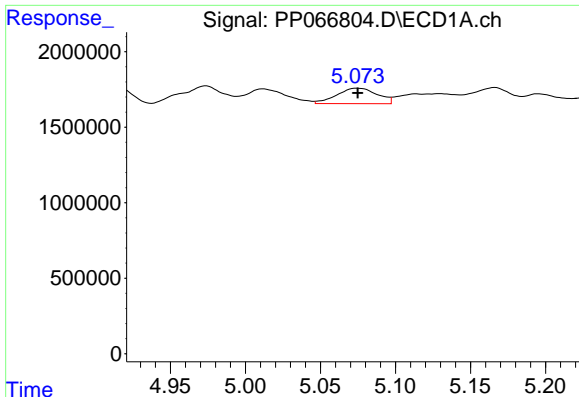
#10 AR-1221-3

R.T.: 5.074 min
 Delta R.T.: -0.001 min
 Response: 1919481
 Conc: 50.58 ng/ml



#10 AR-1221-3

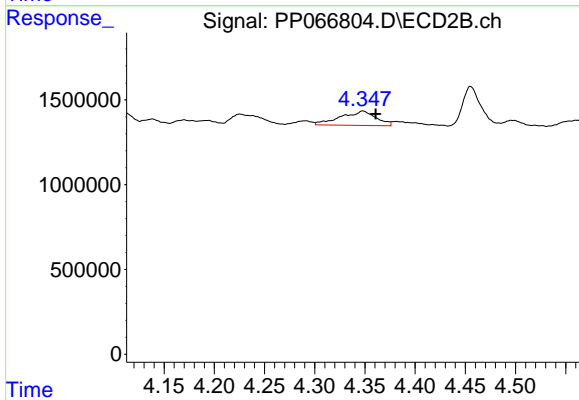
R.T.: 4.348 min
 Delta R.T.: -0.013 min
 Response: 2061772
 Conc: 56.57 ng/ml



#11 AR-1232-1

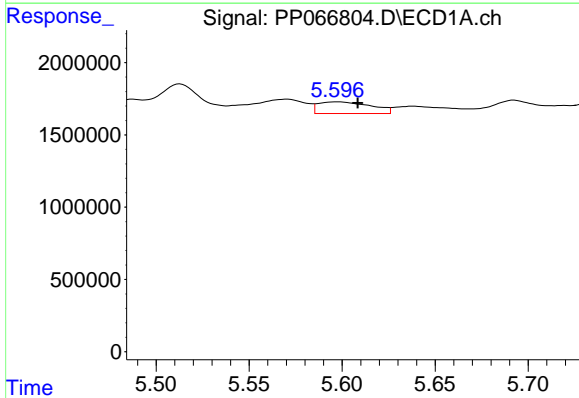
R.T.: 5.074 min
 Delta R.T.: 0.000 min
 Response: 1919481
 Conc: 60.36 ng/ml

Instrument :
 ECD_P
 ClientSampleId :
 18



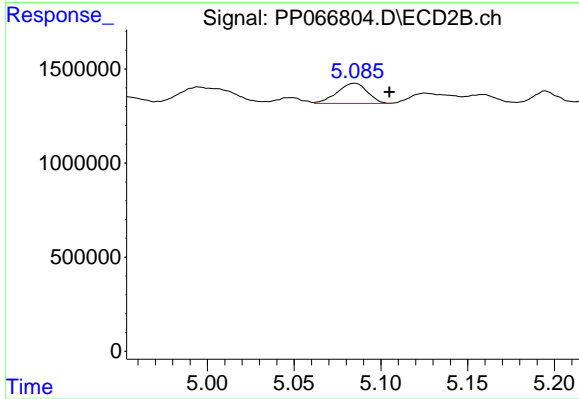
#11 AR-1232-1

R.T.: 4.348 min
 Delta R.T.: -0.013 min
 Response: 2061772
 Conc: 67.28 ng/ml



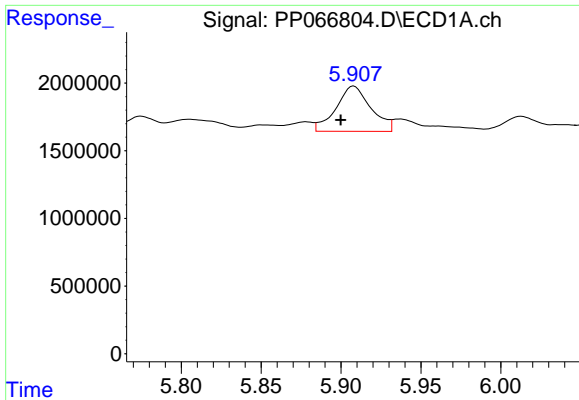
#12 AR-1232-2

R.T.: 5.597 min
 Delta R.T.: -0.011 min
 Response: 1584737
 Conc: 91.49 ng/ml



#12 AR-1232-2

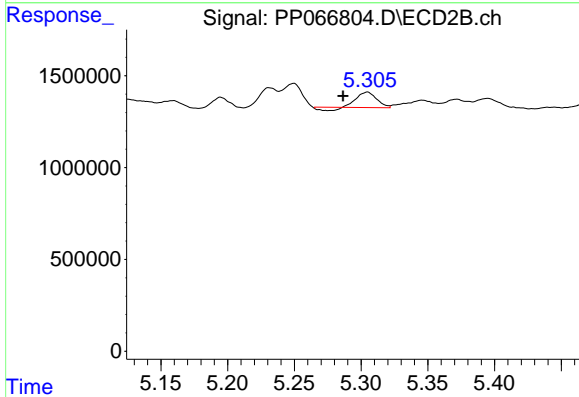
R.T.: 5.085 min
 Delta R.T.: -0.020 min
 Response: 1292409
 Conc: 47.90 ng/ml



#13 AR-1232-3

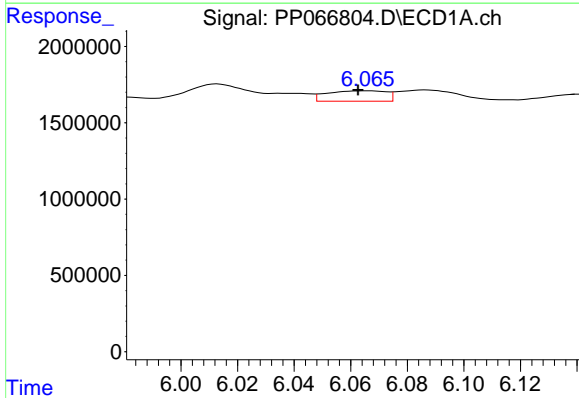
R.T.: 5.908 min
 Delta R.T.: 0.008 min
 Response: 5083642
 Conc: 168.40 ng/ml

Instrument :
 ECD_P
 ClientSampleId :
 18



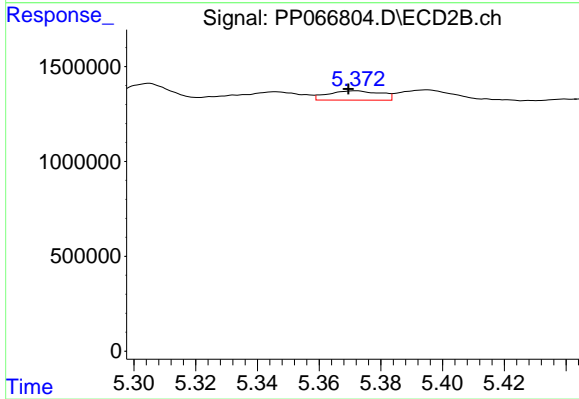
#13 AR-1232-3

R.T.: 5.305 min
 Delta R.T.: 0.018 min
 Response: 795054
 Conc: 59.28 ng/ml



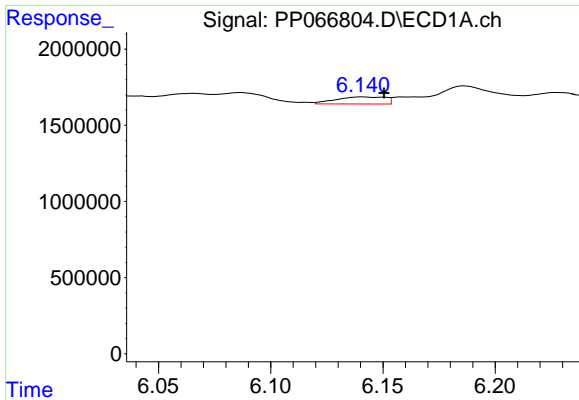
#14 AR-1232-4

R.T.: 6.066 min
 Delta R.T.: 0.003 min
 Response: 991454
 Conc: 67.32 ng/ml



#14 AR-1232-4

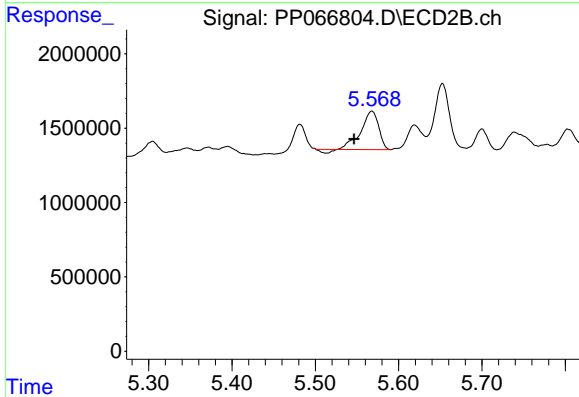
R.T.: 5.372 min
 Delta R.T.: 0.002 min
 Response: 580355
 Conc: 45.15 ng/ml



#15 AR-1232-5

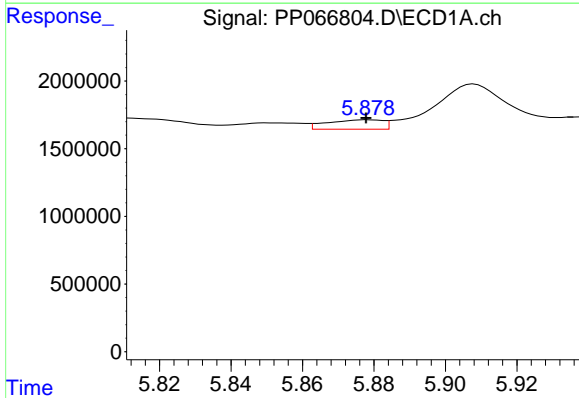
R.T.: 6.141 min
 Delta R.T.: -0.010 min
 Response: 715741
 Conc: 60.30 ng/ml

Instrument :
 ECD_P
 ClientSampleId :
 18



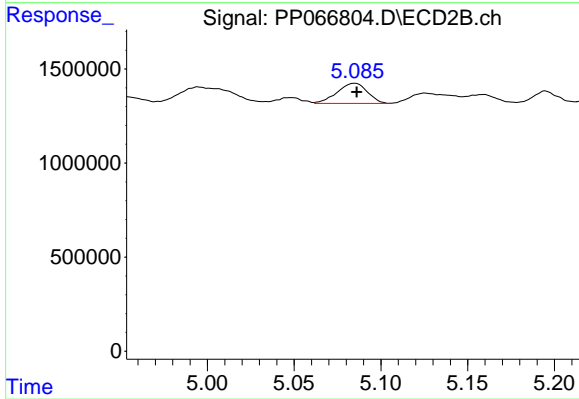
#15 AR-1232-5

R.T.: 5.568 min
 Delta R.T.: 0.021 min
 Response: 3710417
 Conc: 267.92 ng/ml



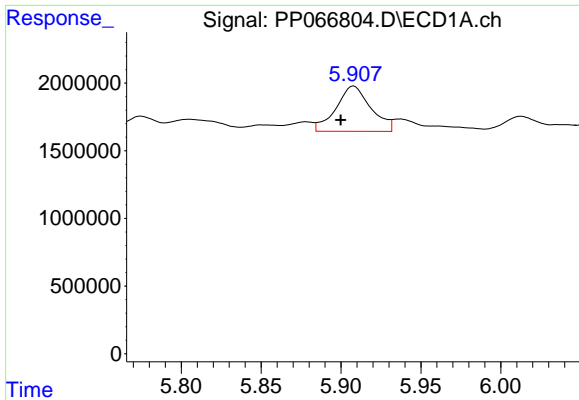
#16 AR-1242-1

R.T.: 5.878 min
 Delta R.T.: 0.000 min
 Response: 753920
 Conc: 23.38 ng/ml



#16 AR-1242-1

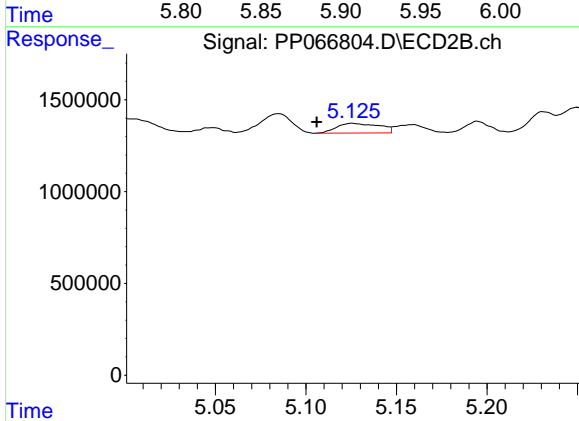
R.T.: 5.085 min
 Delta R.T.: -0.001 min
 Response: 1292409
 Conc: 42.12 ng/ml



#17 AR-1242-2

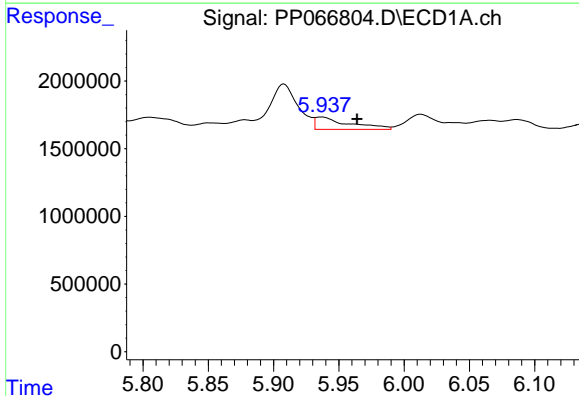
R.T.: 5.908 min
 Delta R.T.: 0.008 min
 Response: 5083642
 Conc: 100.45 ng/ml

Instrument :
 ECD_P
 ClientSampleId :
 18



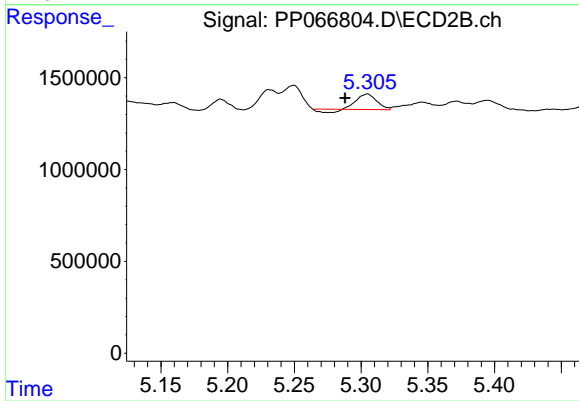
#17 AR-1242-2

R.T.: 5.126 min
 Delta R.T.: 0.020 min
 Response: 864404
 Conc: 19.08 ng/ml



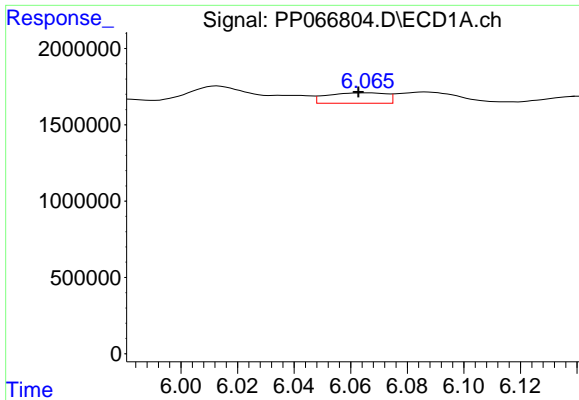
#18 AR-1242-3

R.T.: 5.937 min
 Delta R.T.: -0.027 min
 Response: 1645979
 Conc: 52.09 ng/ml



#18 AR-1242-3

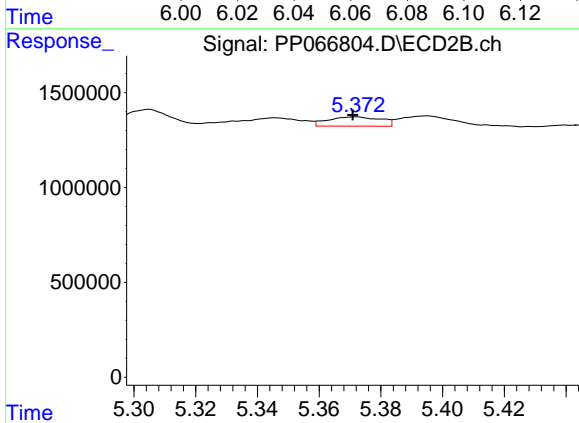
R.T.: 5.305 min
 Delta R.T.: 0.017 min
 Response: 795054
 Conc: 34.04 ng/ml



#19 AR-1242-4

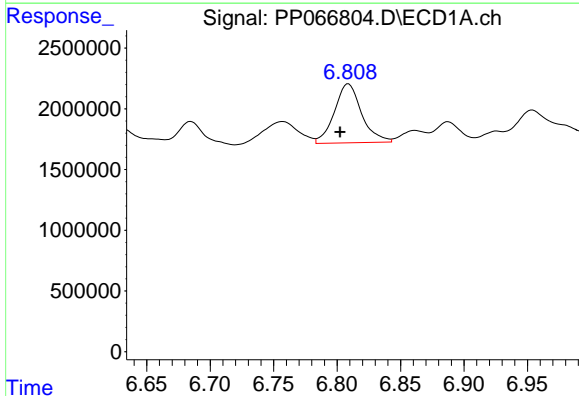
R.T.: 6.066 min
 Delta R.T.: 0.003 min
 Response: 991454
 Conc: 40.01 ng/ml

Instrument :
 ECD_P
 ClientSampleId :
 18



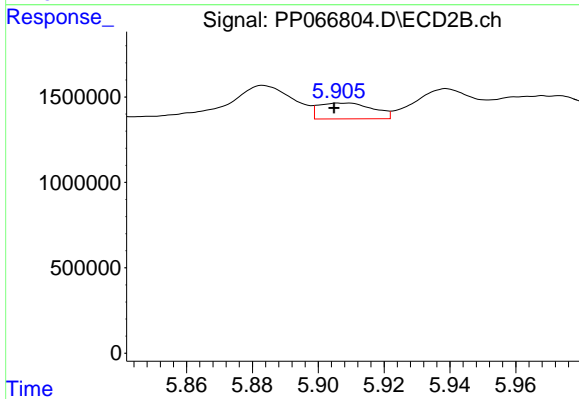
#19 AR-1242-4

R.T.: 5.372 min
 Delta R.T.: 0.000 min
 Response: 580355
 Conc: 23.06 ng/ml



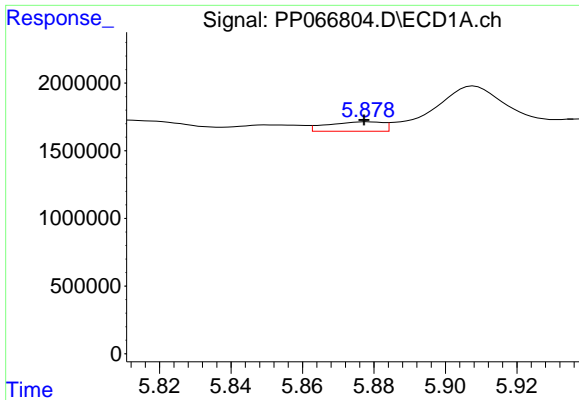
#20 AR-1242-5

R.T.: 6.809 min
 Delta R.T.: 0.007 min
 Response: 7249346
 Conc: 288.49 ng/ml



#20 AR-1242-5

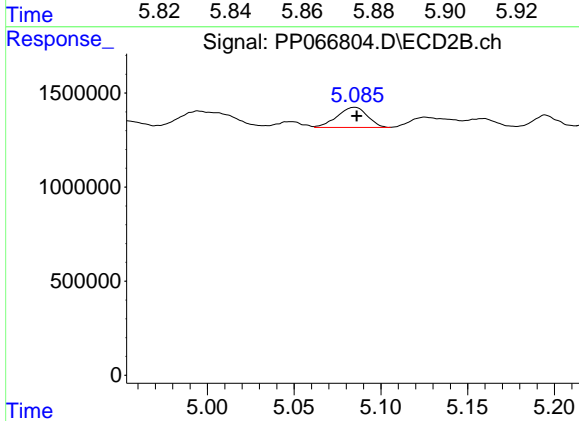
R.T.: 5.908 min
 Delta R.T.: 0.003 min
 Response: 1064583
 Conc: 37.64 ng/ml



#21 AR-1248-1

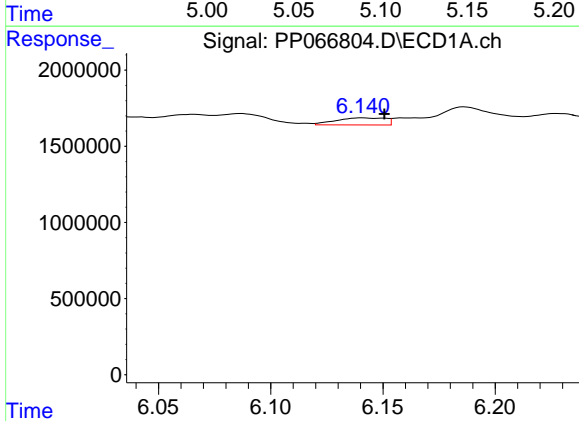
R.T.: 5.878 min
 Delta R.T.: 0.001 min
 Response: 753920
 Conc: 29.50 ng/ml

Instrument :
 ECD_P
 ClientSampleId :
 18



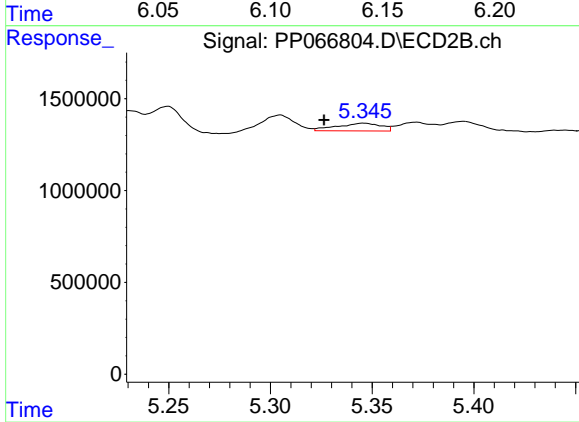
#21 AR-1248-1

R.T.: 5.085 min
 Delta R.T.: -0.001 min
 Response: 1292409
 Conc: 53.38 ng/ml



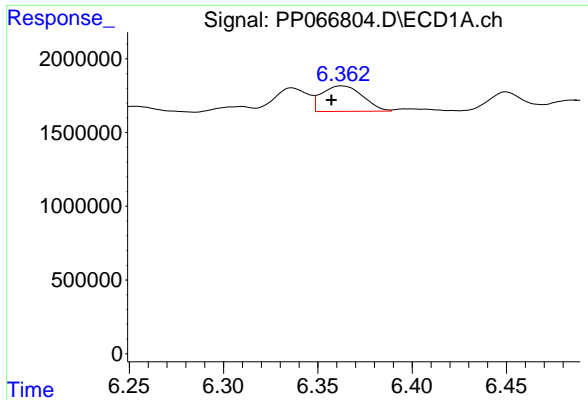
#22 AR-1248-2

R.T.: 6.141 min
 Delta R.T.: -0.010 min
 Response: 715741
 Conc: 17.81 ng/ml



#22 AR-1248-2

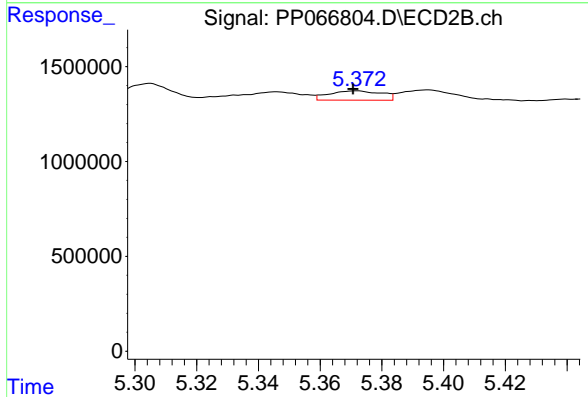
R.T.: 5.346 min
 Delta R.T.: 0.020 min
 Response: 632418
 Conc: 17.51 ng/ml



#23 AR-1248-3

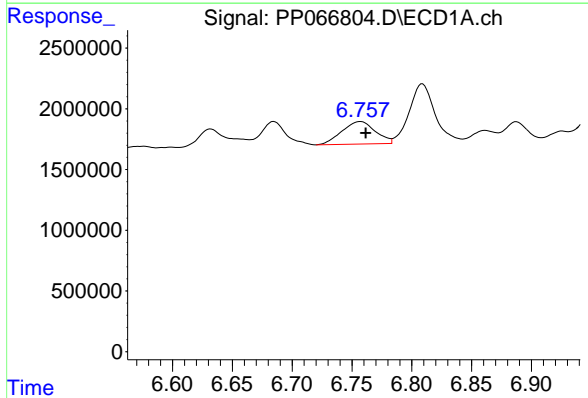
R.T.: 6.363 min
 Delta R.T.: 0.006 min
 Response: 2611149
 Conc: 59.89 ng/ml

Instrument :
 ECD_P
 ClientSampleId :
 18



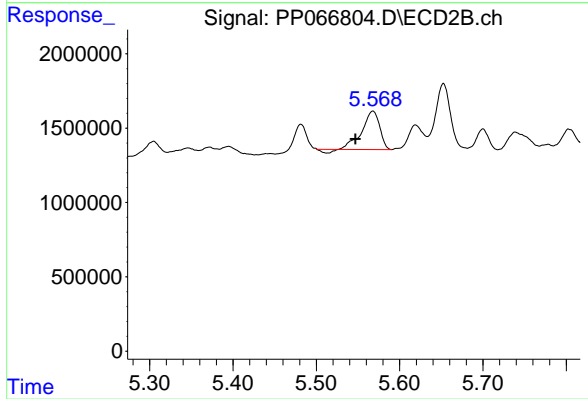
#23 AR-1248-3

R.T.: 5.372 min
 Delta R.T.: 0.001 min
 Response: 580355
 Conc: 15.54 ng/ml



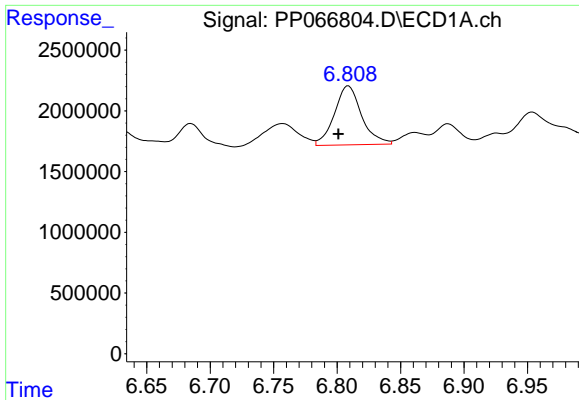
#24 AR-1248-4

R.T.: 6.757 min
 Delta R.T.: -0.004 min
 Response: 3602393
 Conc: 81.55 ng/ml



#24 AR-1248-4

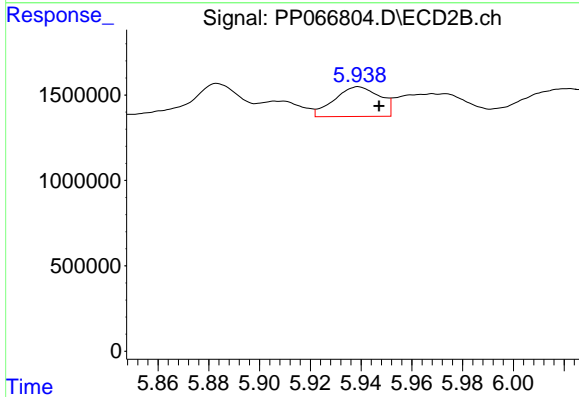
R.T.: 5.568 min
 Delta R.T.: 0.021 min
 Response: 3710417
 Conc: 84.09 ng/ml



#25 AR-1248-5

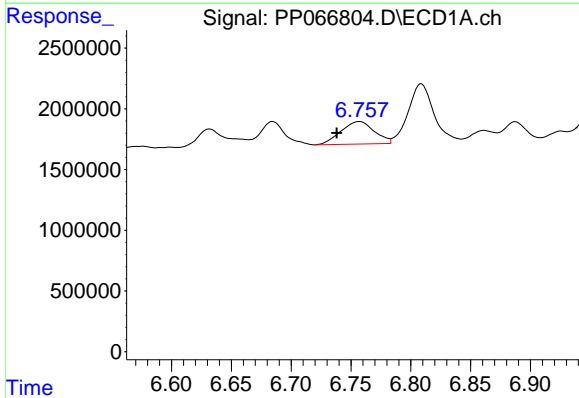
R.T.: 6.809 min
 Delta R.T.: 0.008 min
 Response: 7249346
 Conc: 158.13 ng/ml

Instrument :
 ECD_P
 ClientSampleId :
 18



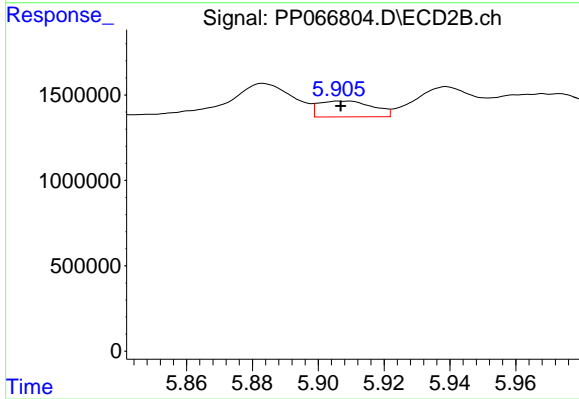
#25 AR-1248-5

R.T.: 5.939 min
 Delta R.T.: -0.008 min
 Response: 2164517
 Conc: 57.30 ng/ml



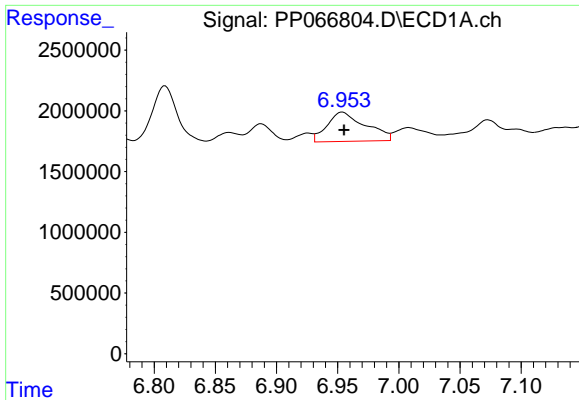
#26 AR-1254-1

R.T.: 6.757 min
 Delta R.T.: 0.019 min
 Response: 3602393
 Conc: 72.97 ng/ml



#26 AR-1254-1

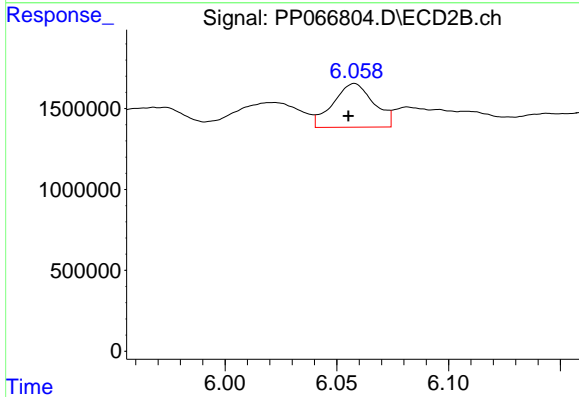
R.T.: 5.908 min
 Delta R.T.: 0.000 min
 Response: 1064583
 Conc: 17.77 ng/ml



#27 AR-1254-2

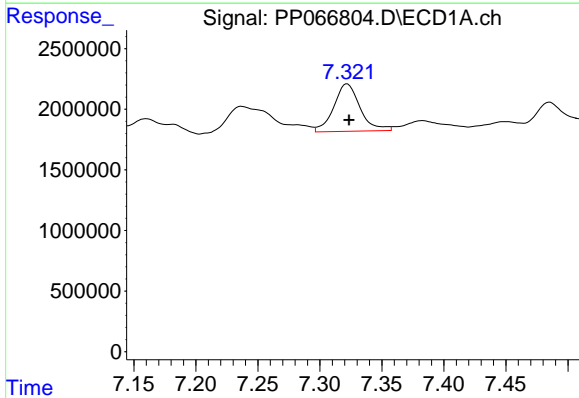
R.T.: 6.954 min
 Delta R.T.: -0.002 min
 Response: 5285614
 Conc: 72.45 ng/ml

Instrument :
 ECD_P
 ClientSampleId :
 18



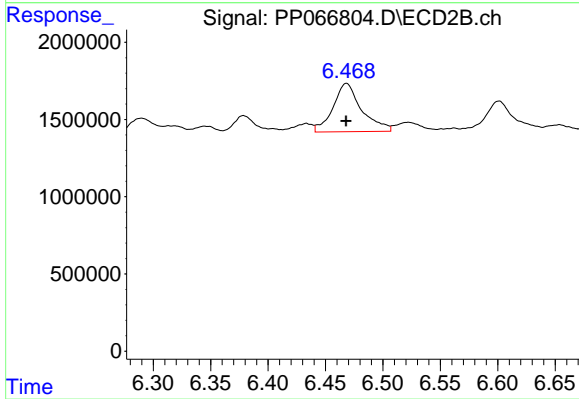
#27 AR-1254-2

R.T.: 6.058 min
 Delta R.T.: 0.003 min
 Response: 3423369
 Conc: 64.06 ng/ml



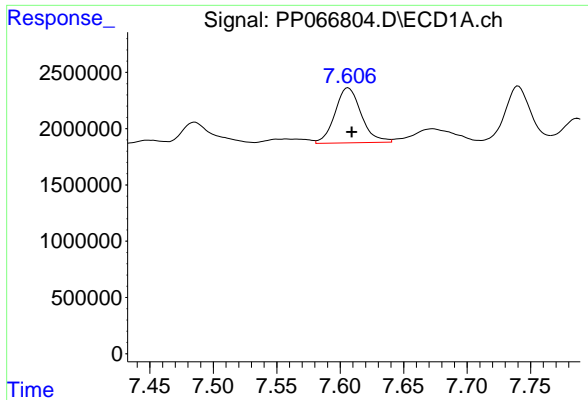
#28 AR-1254-3

R.T.: 7.322 min
 Delta R.T.: -0.002 min
 Response: 5766075
 Conc: 82.53 ng/ml



#28 AR-1254-3

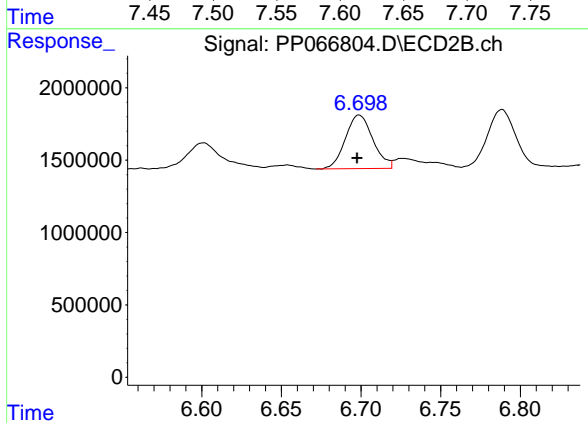
R.T.: 6.468 min
 Delta R.T.: 0.000 min
 Response: 5425485
 Conc: 68.61 ng/ml



#29 AR-1254-4

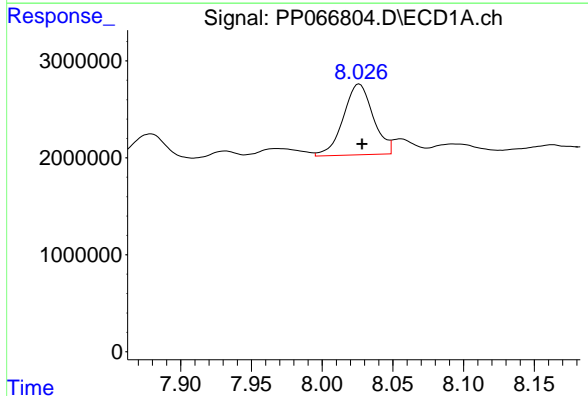
R.T.: 7.606 min
 Delta R.T.: -0.003 min
 Response: 7032962
 Conc: 157.96 ng/ml

Instrument :
 ECD_P
 ClientSampleId :
 18



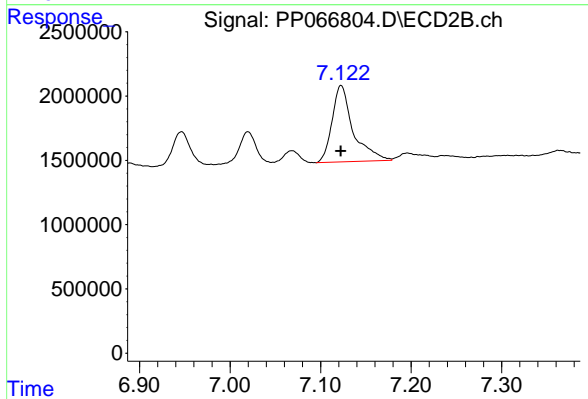
#29 AR-1254-4

R.T.: 6.699 min
 Delta R.T.: 0.001 min
 Response: 4461773
 Conc: 110.37 ng/ml



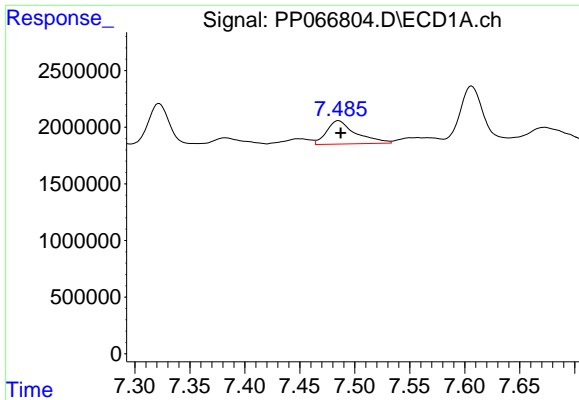
#30 AR-1254-5

R.T.: 8.026 min
 Delta R.T.: -0.002 min
 Response: 10742691
 Conc: 162.04 ng/ml



#30 AR-1254-5

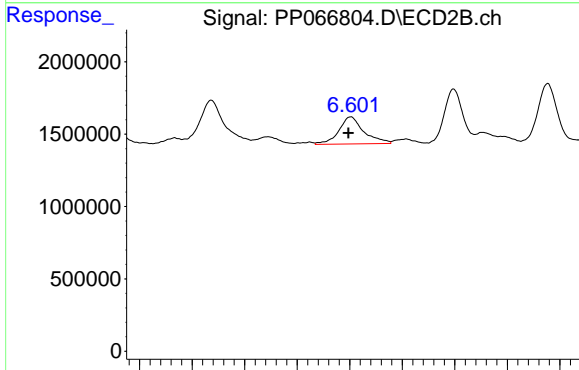
R.T.: 7.123 min
 Delta R.T.: 0.000 min
 Response: 9617201
 Conc: 149.62 ng/ml



#31 AR-1260-1

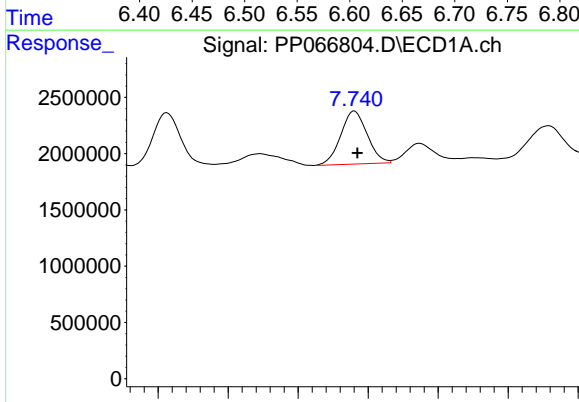
R.T.: 7.485 min
 Delta R.T.: -0.002 min
 Response: 3830210
 Conc: 68.35 ng/ml

Instrument :
 ECD_P
 ClientSampleId :
 18



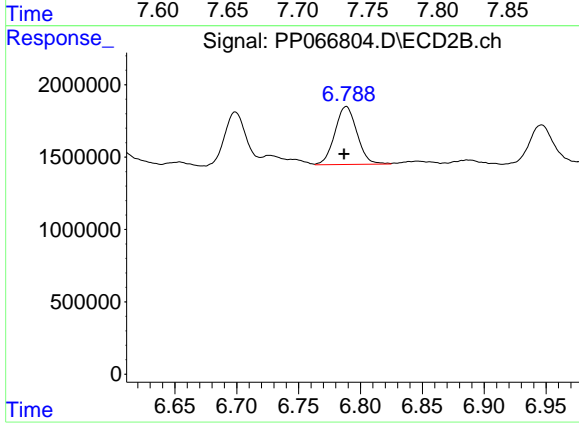
#31 AR-1260-1

R.T.: 6.601 min
 Delta R.T.: 0.002 min
 Response: 3095863
 Conc: 52.38 ng/ml



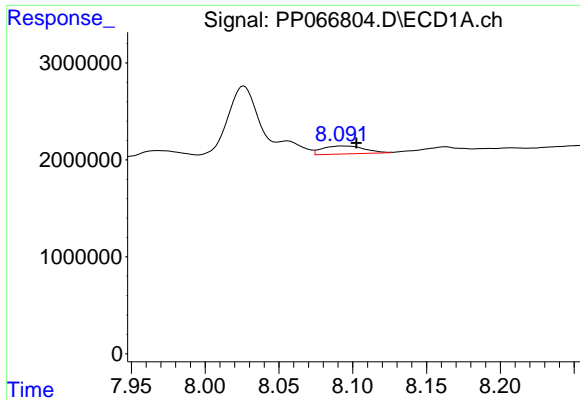
#32 AR-1260-2

R.T.: 7.740 min
 Delta R.T.: -0.002 min
 Response: 6201641
 Conc: 97.41 ng/ml



#32 AR-1260-2

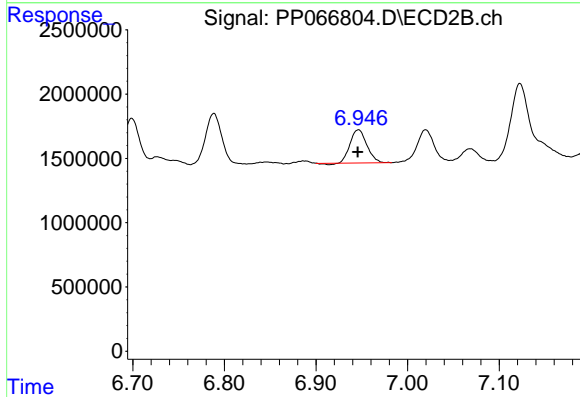
R.T.: 6.788 min
 Delta R.T.: 0.002 min
 Response: 4979987
 Conc: 73.09 ng/ml



#33 AR-1260-3

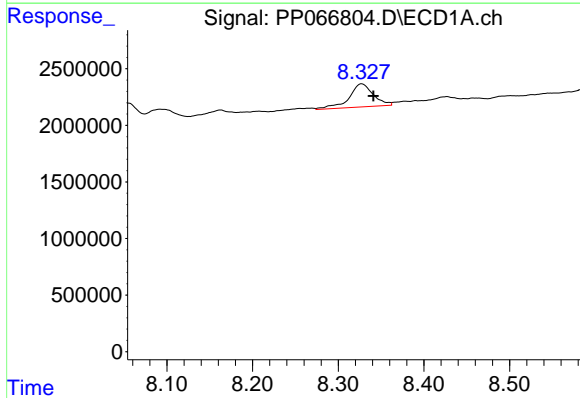
R.T.: 8.092 min
 Delta R.T.: -0.010 min
 Response: 1628268
 Conc: 36.61 ng/ml

Instrument :
 ECD_P
 ClientSampleId :
 18



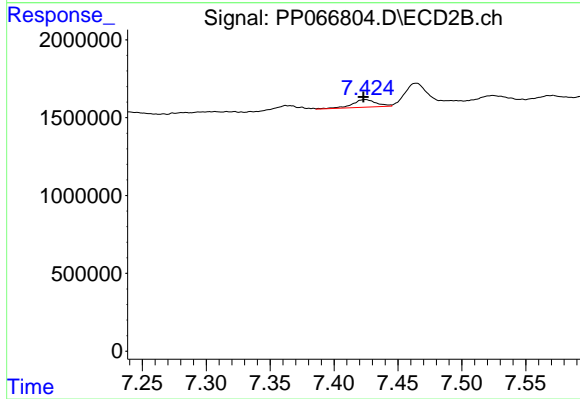
#33 AR-1260-3

R.T.: 6.946 min
 Delta R.T.: 0.000 min
 Response: 3260045
 Conc: 50.17 ng/ml



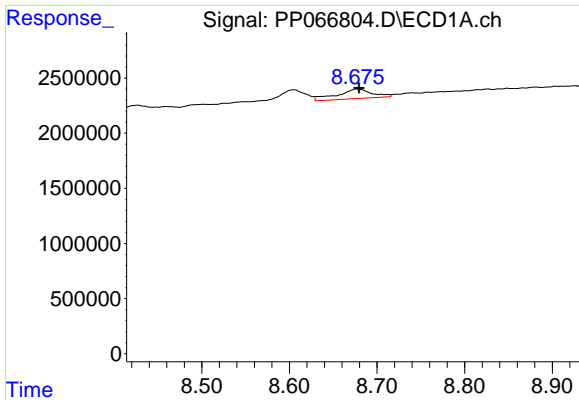
#34 AR-1260-4

R.T.: 8.327 min
 Delta R.T.: -0.014 min
 Response: 4041223
 Conc: 76.57 ng/ml



#34 AR-1260-4

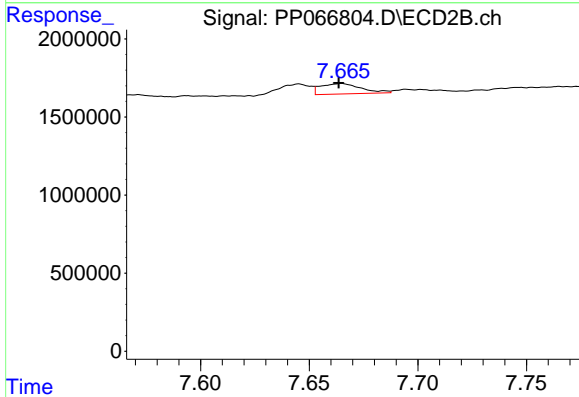
R.T.: 7.424 min
 Delta R.T.: 0.002 min
 Response: 646042
 Conc: 14.35 ng/ml



#35 AR-1260-5

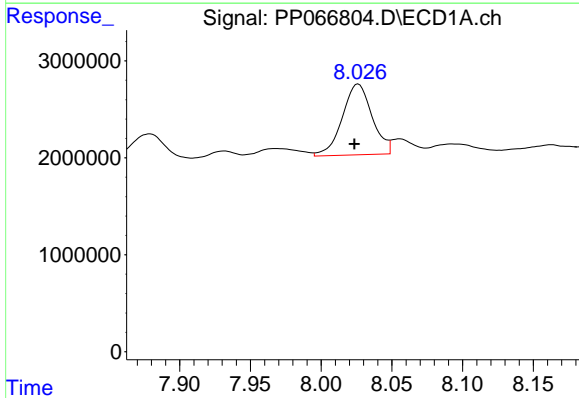
R.T.: 8.676 min
 Delta R.T.: -0.003 min
 Response: 2411232
 Conc: 27.11 ng/ml

Instrument :
 ECD_P
 ClientSampleId :
 18



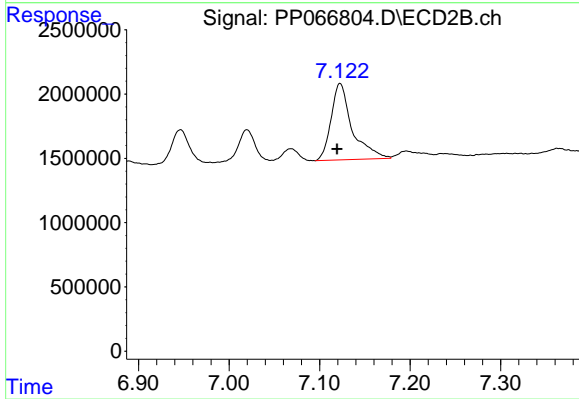
#35 AR-1260-5

R.T.: 7.665 min
 Delta R.T.: 0.001 min
 Response: 866486
 Conc: 8.98 ng/ml



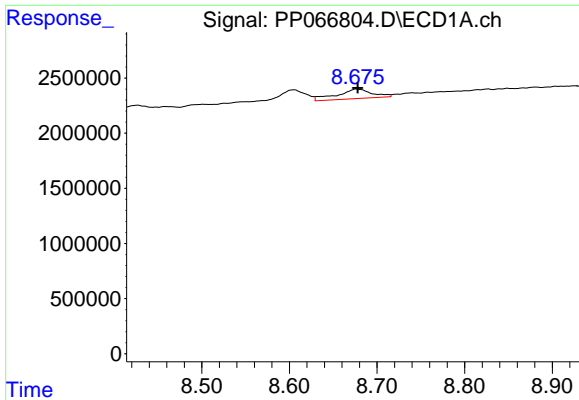
#36 AR-1262-1

R.T.: 8.026 min
 Delta R.T.: 0.003 min
 Response: 10742691
 Conc: 237.93 ng/ml



#36 AR-1262-1

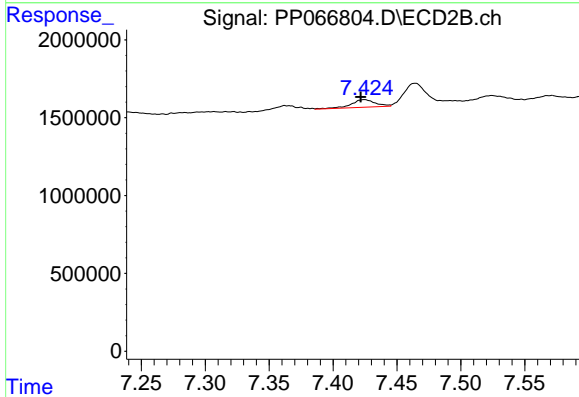
R.T.: 7.123 min
 Delta R.T.: 0.003 min
 Response: 9617201
 Conc: 300.87 ng/ml



#37 AR-1262-2

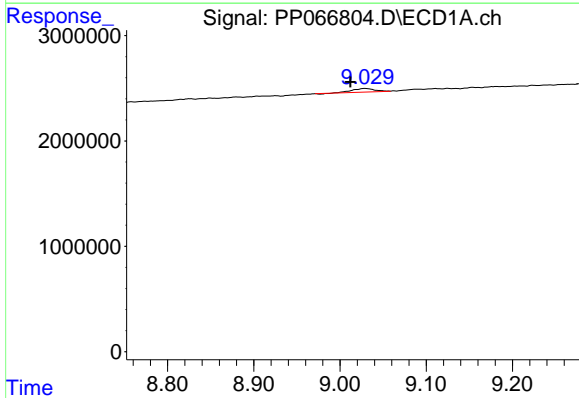
R.T.: 8.676 min
 Delta R.T.: -0.002 min
 Response: 2411232
 Conc: 22.08 ng/ml

Instrument :
 ECD_P
 ClientSampleId :
 18



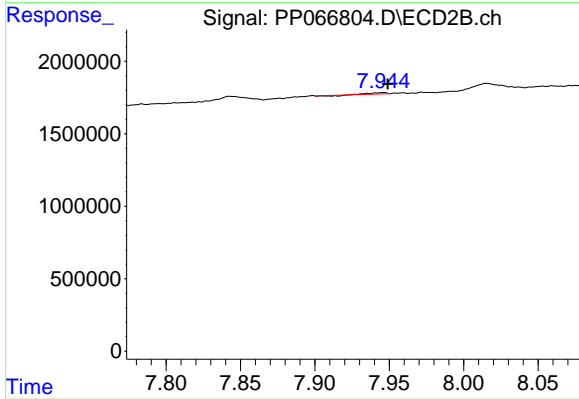
#37 AR-1262-2

R.T.: 7.424 min
 Delta R.T.: 0.003 min
 Response: 646042
 Conc: 10.36 ng/ml



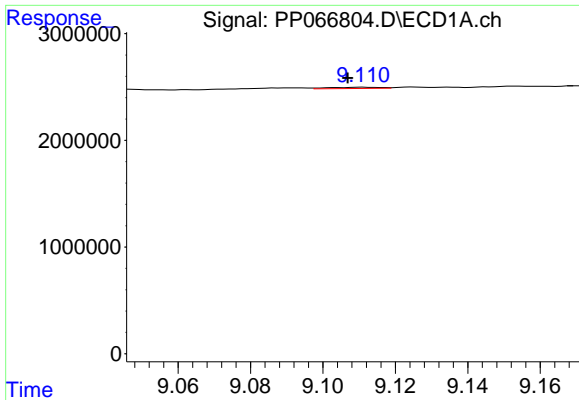
#38 AR-1262-3

R.T.: 9.029 min
 Delta R.T.: 0.017 min
 Response: 611065
 Conc: 8.61 ng/ml



#38 AR-1262-3

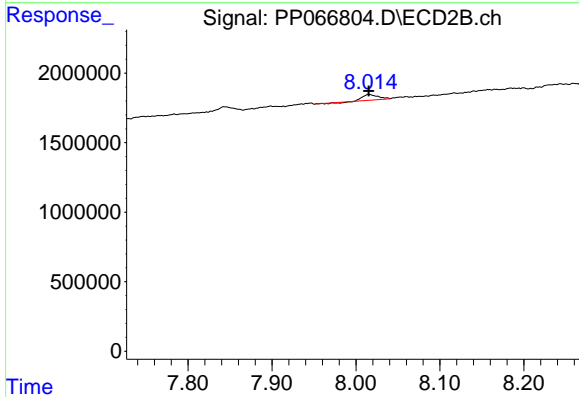
R.T.: 7.946 min
 Delta R.T.: -0.003 min
 Response: 41923
 Conc: 0.94 ng/ml



#39 AR-1262-4

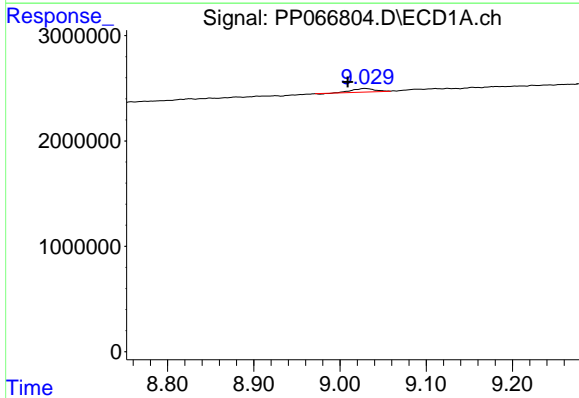
R.T.: 9.111 min
 Delta R.T.: 0.004 min
 Response: 112907
 Conc: 1.93 ng/ml

Instrument :
 ECD_P
 ClientSampleId :
 18



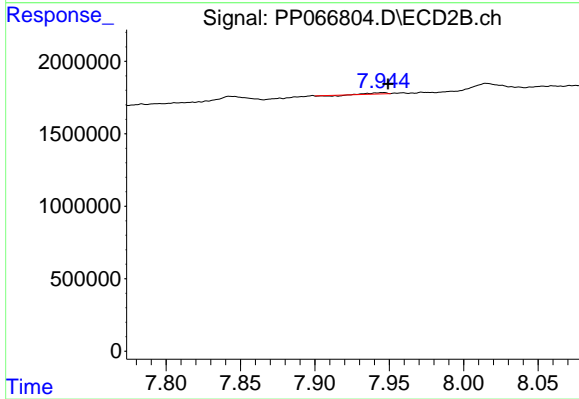
#39 AR-1262-4

R.T.: 8.016 min
 Delta R.T.: 0.000 min
 Response: 492325
 Conc: 5.94 ng/ml



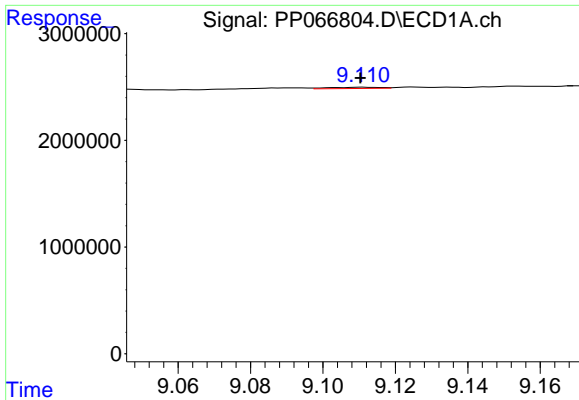
#41 AR-1268-1

R.T.: 9.029 min
 Delta R.T.: 0.020 min
 Response: 611065
 Conc: 4.88 ng/ml



#41 AR-1268-1

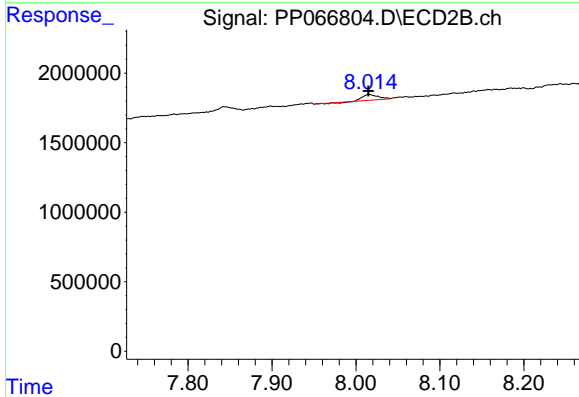
R.T.: 7.946 min
 Delta R.T.: -0.003 min
 Response: 41923
 Conc: 0.33 ng/ml



#42 AR-1268-2

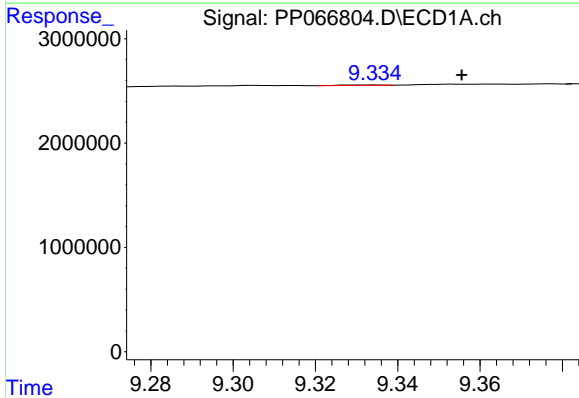
R.T.: 9.111 min
 Delta R.T.: 0.000 min
 Response: 112907
 Conc: 1.02 ng/ml

Instrument :
 ECD_P
 ClientSampleId :
 18



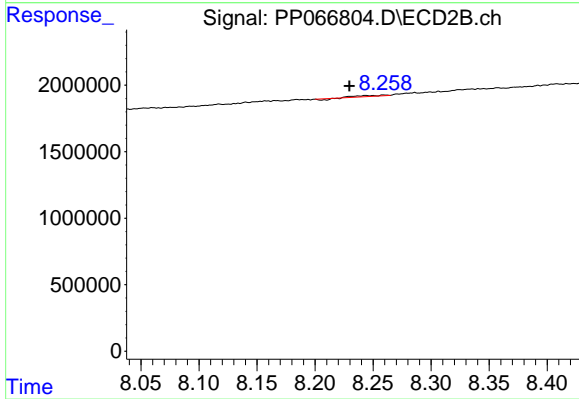
#42 AR-1268-2

R.T.: 8.016 min
 Delta R.T.: 0.000 min
 Response: 492325
 Conc: 4.25 ng/ml



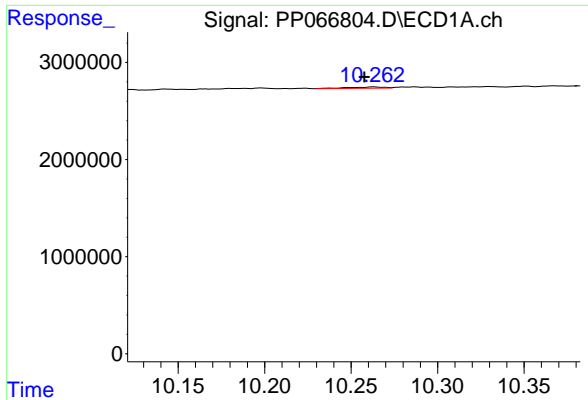
#43 AR-1268-3

R.T.: 9.334 min
 Delta R.T.: -0.021 min
 Response: 29702
 Conc: 0.30 ng/ml



#43 AR-1268-3

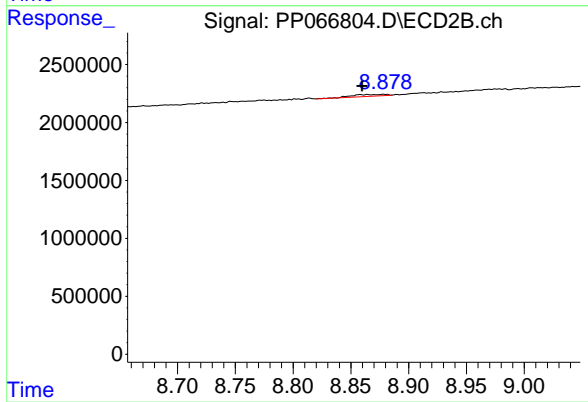
R.T.: 8.259 min
 Delta R.T.: 0.030 min
 Response: 66040
 Conc: 0.66 ng/ml



#45 AR-1268-5

R.T.: 10.263 min
Delta R.T.: 0.006 min
Response: 177273
Conc: 0.62 ng/ml

Instrument :
ECD_P
ClientSampleId :
18



#45 AR-1268-5

R.T.: 8.879 min
Delta R.T.: 0.019 min
Response: 334620
Conc: 1.15 ng/ml