

Data Path : Z:\pestpcbsrv\HPCHEM1\ECD_P\Data\PP082321\
 Data File : PP038805.D
 Signal(s) : Signal #1: ECD1A.CH Signal #2: ECD2B.CH
 Acq On : 23 Aug 2021 22:24
 Operator : AJ\MA
 Sample : M3434-29RE
 Misc :
 ALS Vial : 35 Sample Multiplier: 1

Instrument :
 ECD_P
 ClientSampleId :
 SWCS-14-0515RE

Integration File signal 1: autoint1.e
 Integration File signal 2: autoint2.e
 Quant Time: Aug 24 07:41:31 2021
 Quant Method : Z:\pestpcbsrv\HPCHEM1\ECD_P\methods\PP081721.M
 Quant Title : GC EXTRACTABLES
 QLast Update : Wed Aug 18 04:51:26 2021
 Response via : Initial Calibration
 Integrator: ChemStation 6890 Scale Mode: Small noise peaks clipped

Volume Inj. : 2 µl
 Signal #1 Phase : ZB-MR1 Signal #2 Phase: ZB-MR2
 Signal #1 Info : 30Mx0.32mmx 0.50µ Signal #2 Info : 30M x 0.32mm x 0.25µm

Compound	RT#1	RT#2	Resp#1	Resp#2	ng/ml	ng/ml

System Monitoring Compounds						
1) SA Tetrachlo...	4.883	3.869	694968	439716	17.220	18.349
2) SA Decachlor...	10.870	9.128	242267	239208	9.847	9.821
Target Compounds						
26) L6 AR-1254-1	7.111	5.979	59323	51296	51.992	39.059
27) L6 AR-1254-2	7.341	6.139	76237	44115	44.148	38.436
28) L6 AR-1254-3	7.727	6.557	124750	73591	69.494	39.549 #
29) L6 AR-1254-4	8.019	6.797	36911	27241	28.606	23.311
30) L6 AR-1254-5	8.448	7.224	65070	84340	52.611	52.181

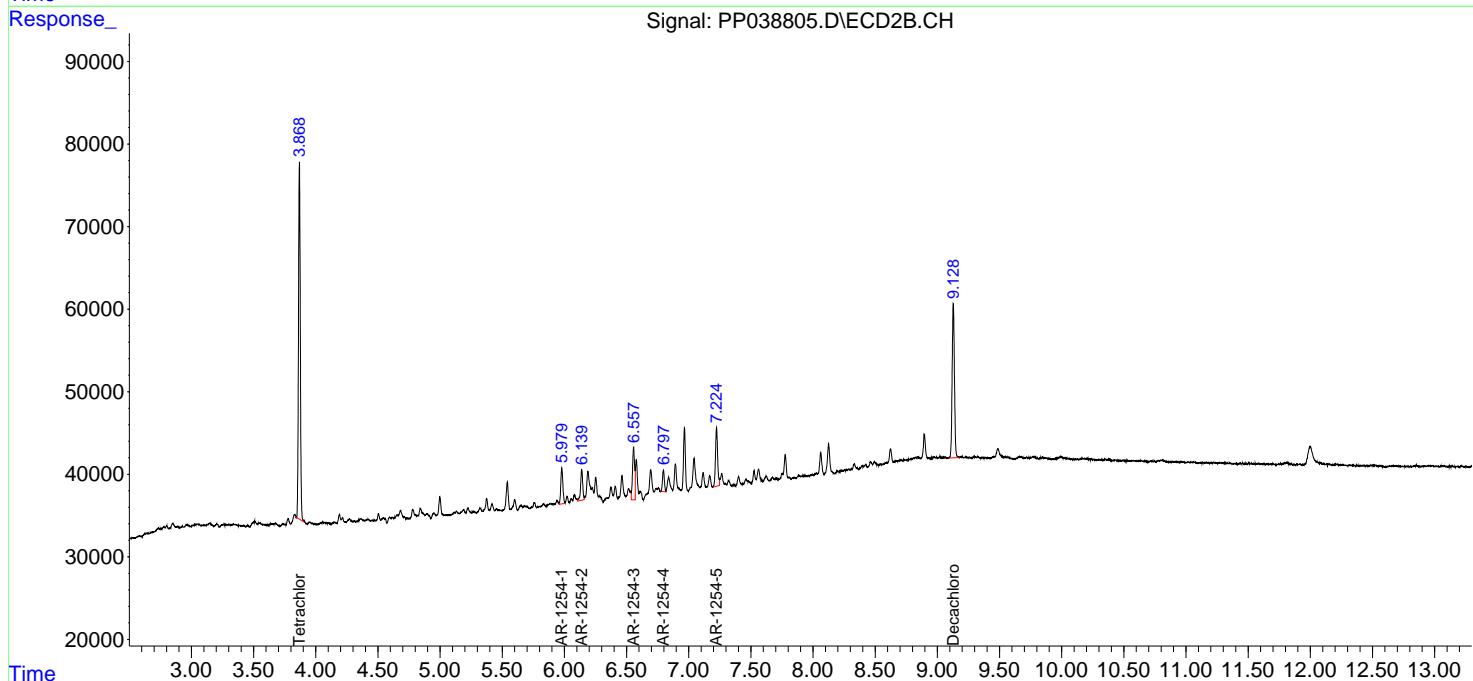
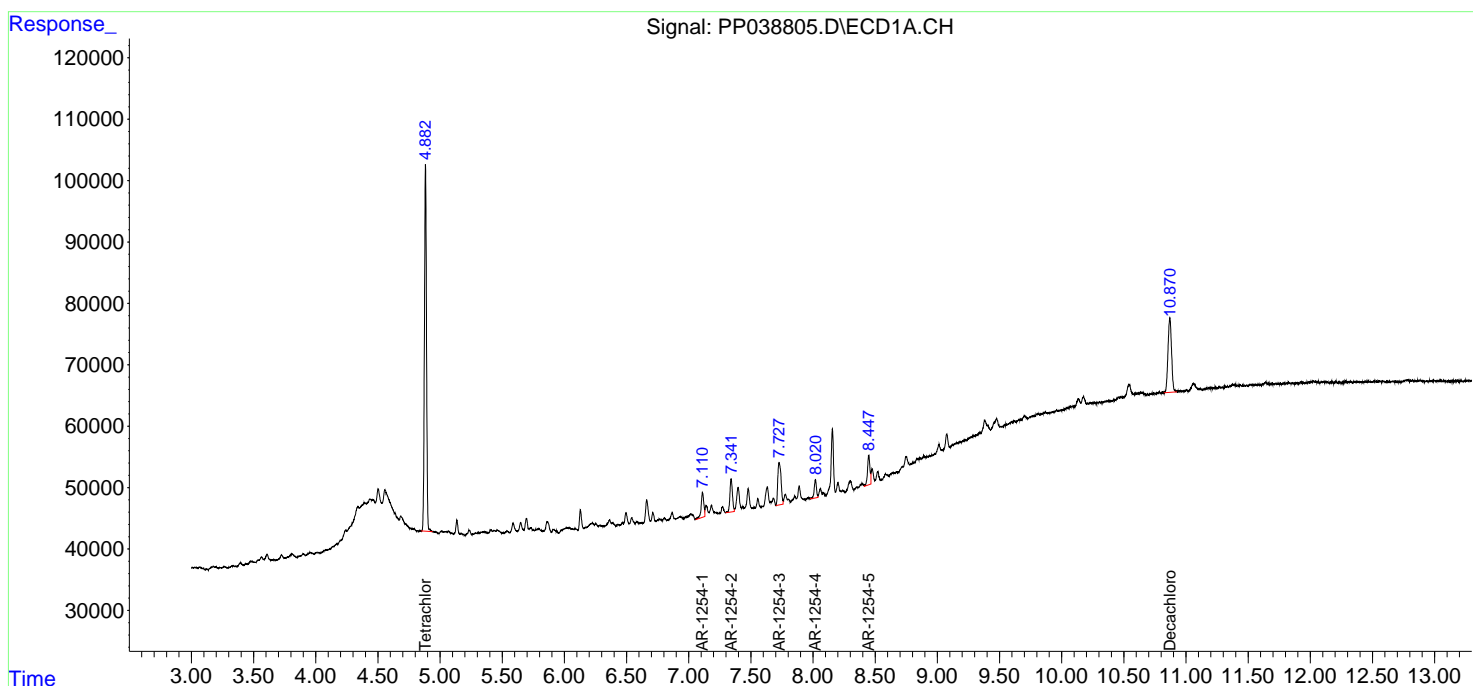
(f)=RT Delta > 1/2 Window (#)=Amounts differ by > 25% (m)=manual int.

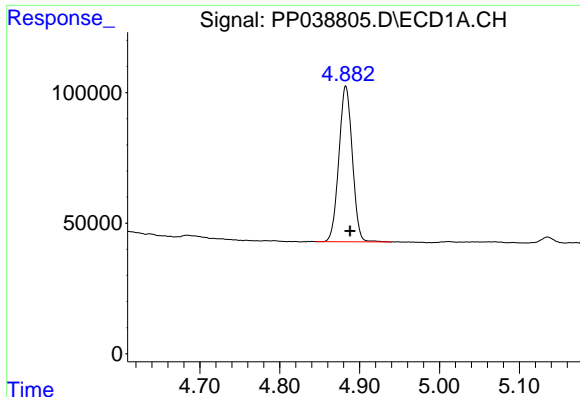
Data Path : Z:\pestpcbsrv\HPCHEM1\ECD_P\Data\PP082321\
 Data File : PP038805.D
 Signal(s) : Signal #1: ECD1A.CH Signal #2: ECD2B.CH
 Acq On : 23 Aug 2021 22:24
 Operator : AJ\MA
 Sample : M3434-29RE
 Misc :
 ALS Vial : 35 Sample Multiplier: 1

Instrument :
 ECD_P
 ClientSampleID :
 SWCS-14-0515RE

Integration File signal 1: autoint1.e
 Integration File signal 2: autoint2.e
 Quant Time: Aug 24 07:41:31 2021
 Quant Method : Z:\pestpcbsrv\HPCHEM1\ECD_P\methods\PP081721.M
 Quant Title : GC EXTRACTABLES
 QLast Update : Wed Aug 18 04:51:26 2021
 Response via : Initial Calibration
 Integrator: ChemStation 6890 Scale Mode: Small noise peaks clipped

Volume Inj. : 2 µl
 Signal #1 Phase : ZB-MR1 Signal #2 Phase: ZB-MR2
 Signal #1 Info : 30Mx0.32mmx 0.50µ Signal #2 Info : 30M x 0.32mm x 0.25µm

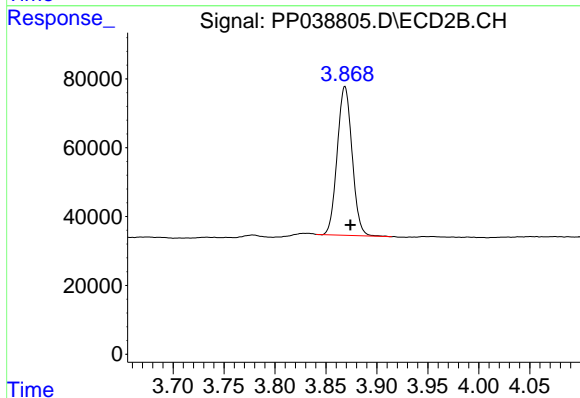




#1 Tetrachloro-m-xylene

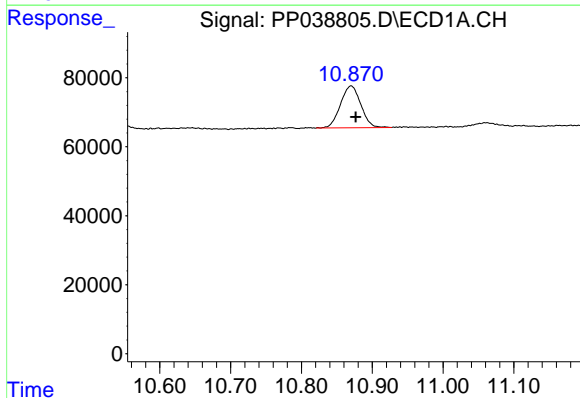
R.T.: 4.883 min
 Delta R.T.: -0.005 min
 Response: 694968
 Conc: 17.22 ng/ml

Instrument :
 ECD_P
 ClientSampleId :
 SWCS-14-0515RE



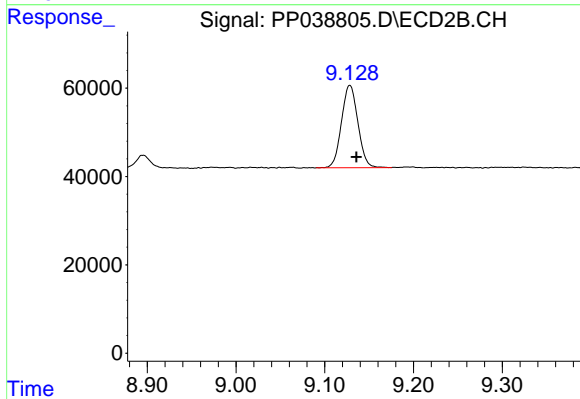
#1 Tetrachloro-m-xylene

R.T.: 3.869 min
 Delta R.T.: -0.005 min
 Response: 439716
 Conc: 18.35 ng/ml



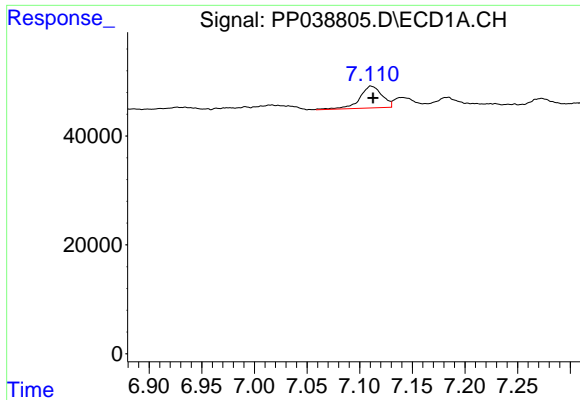
#2 Decachlorobiphenyl

R.T.: 10.870 min
 Delta R.T.: -0.007 min
 Response: 242267
 Conc: 9.85 ng/ml



#2 Decachlorobiphenyl

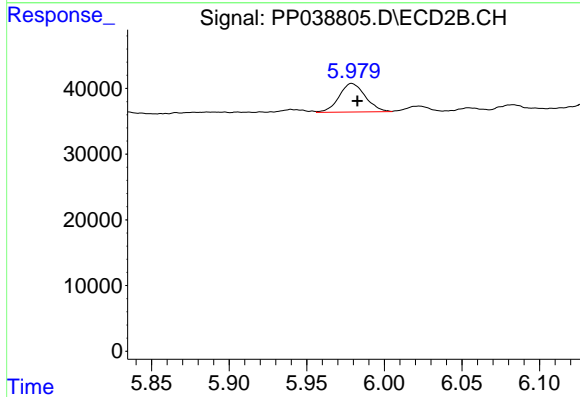
R.T.: 9.128 min
 Delta R.T.: -0.007 min
 Response: 239208
 Conc: 9.82 ng/ml



#26 AR-1254-1

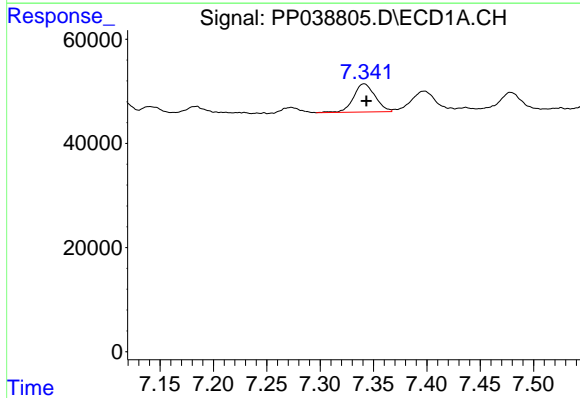
R.T.: 7.111 min
 Delta R.T.: -0.002 min
 Response: 59323
 Conc: 51.99 ng/ml

Instrument :
 ECD_P
 ClientSampleId :
 SWCS-14-0515RE



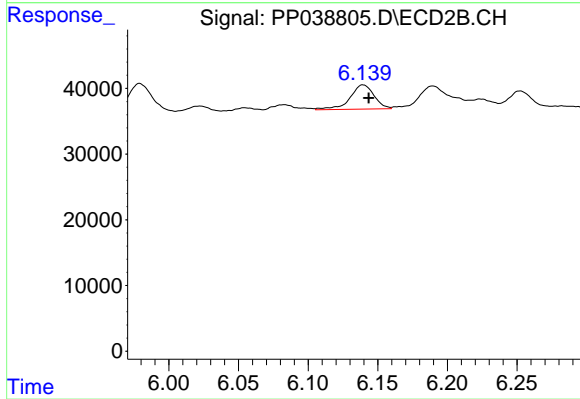
#26 AR-1254-1

R.T.: 5.979 min
 Delta R.T.: -0.004 min
 Response: 51296
 Conc: 39.06 ng/ml



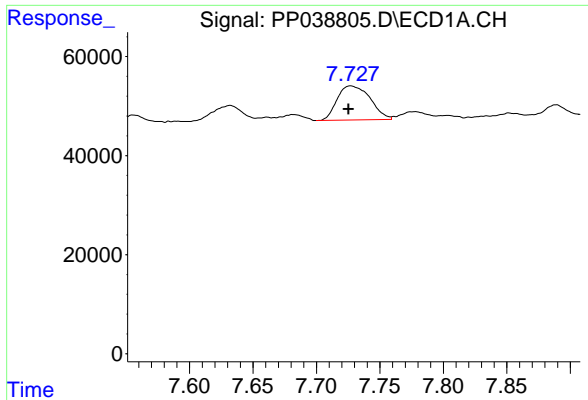
#27 AR-1254-2

R.T.: 7.341 min
 Delta R.T.: -0.002 min
 Response: 76237
 Conc: 44.15 ng/ml



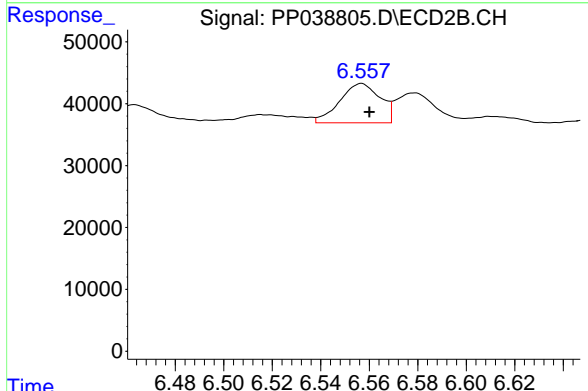
#27 AR-1254-2

R.T.: 6.139 min
 Delta R.T.: -0.004 min
 Response: 44115
 Conc: 38.44 ng/ml

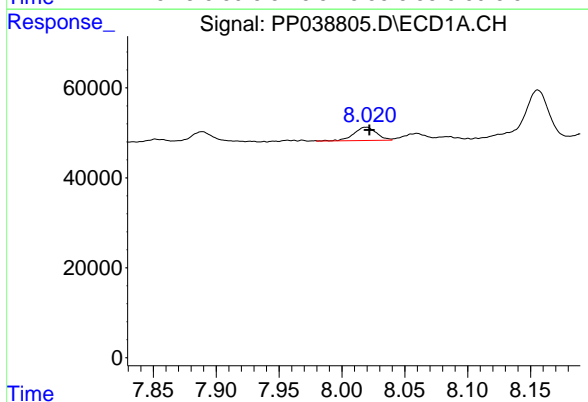


#28 AR-1254-3
 R.T.: 7.727 min
 Delta R.T.: 0.002 min
 Response: 124750
 Conc: 69.49 ng/ml

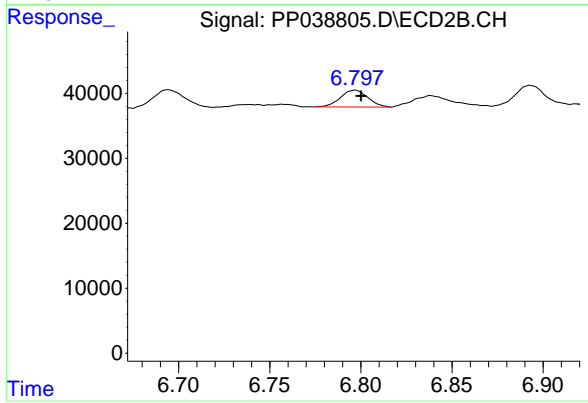
Instrument :
 ECD_P
ClientSampleId :
 SWCS-14-0515RE



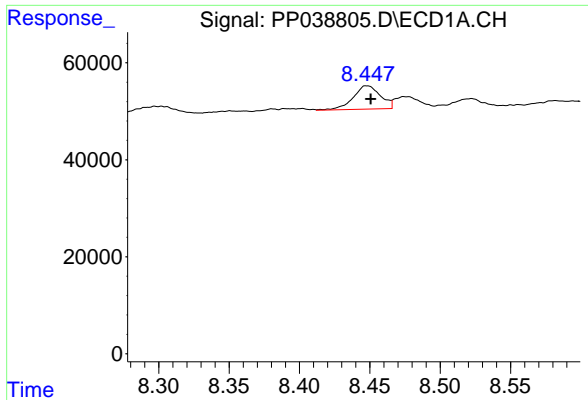
#28 AR-1254-3
 R.T.: 6.557 min
 Delta R.T.: -0.003 min
 Response: 73591
 Conc: 39.55 ng/ml



#29 AR-1254-4
 R.T.: 8.019 min
 Delta R.T.: -0.003 min
 Response: 36911
 Conc: 28.61 ng/ml



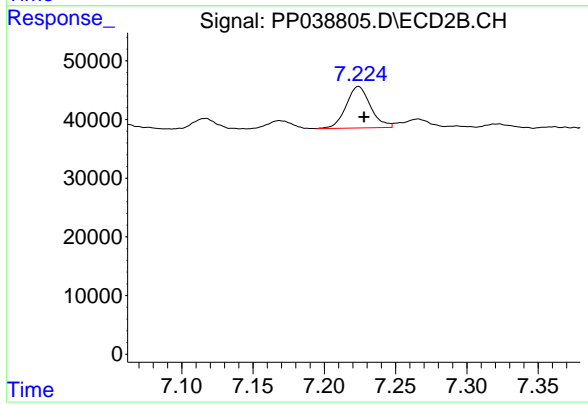
#29 AR-1254-4
 R.T.: 6.797 min
 Delta R.T.: -0.003 min
 Response: 27241
 Conc: 23.31 ng/ml



#30 AR-1254-5

R.T.: 8.448 min
Delta R.T.: -0.002 min
Response: 65070
Conc: 52.61 ng/ml

Instrument :
ECD_P
ClientSampleId :
SWCS-14-0515RE



#30 AR-1254-5

R.T.: 7.224 min
Delta R.T.: -0.004 min
Response: 84340
Conc: 52.18 ng/ml