

Data Path : Z:\pestpcbsrv\HPCHEM1\ECD_P\Data\PP082323\
 Data File : PP059474.D
 Signal(s) : Signal #1: ECD1A.ch Signal #2: ECD2B.ch
 Acq On : 23 Aug 2023 21:22
 Operator : YP\AJ
 Sample : AR1254ICV500
 Misc :
 ALS Vial : 34 Sample Multiplier: 1

Instrument :
 ECD_P
 ClientSampleId :

Integration File signal 1: autoint1.e
 Integration File signal 2: autoint2.e
 Quant Time: Aug 24 00:21:46 2023
 Quant Method : Z:\pestpcbsrv\HPCHEM1\ECD_P\methods\PP082323.M
 Quant Title : GC EXTRACTABLES
 QLast Update : Thu Aug 24 00:18:25 2023
 Response via : Initial Calibration
 Integrator: ChemStation

Volume Inj. : 2 µl
 Signal #1 Phase : ZB-MR2 Signal #2 Phase: ZB-MR2
 Signal #1 Info : 30Mx0.32mmx 0.50µ Signal #2 Info : 30M x 0.32mm x 0.25µm

Compound	RT#1	RT#2	Resp#1	Resp#2	ng/ml	ng/ml

System Monitoring Compounds						
1) SA Tetrachlo...	4.412	3.641	61687287	106.2E6	50.236	49.188
2) SA Decachlor...	10.196	8.669	40894854	75404987	48.488	51.120
Target Compounds						
26) L6 AR-1254-1	6.446	5.536	24618711	51612933	498.078	496.781
27) L6 AR-1254-2	6.667	5.685	36140466	43764394	495.584	493.927
28) L6 AR-1254-3	7.034	6.089	35648979	70019287	493.163	493.173
29) L6 AR-1254-4	7.321	6.321	22549977	40146080	496.433	494.115
30) L6 AR-1254-5	7.740	6.738	23427255	60794147	492.436	494.414

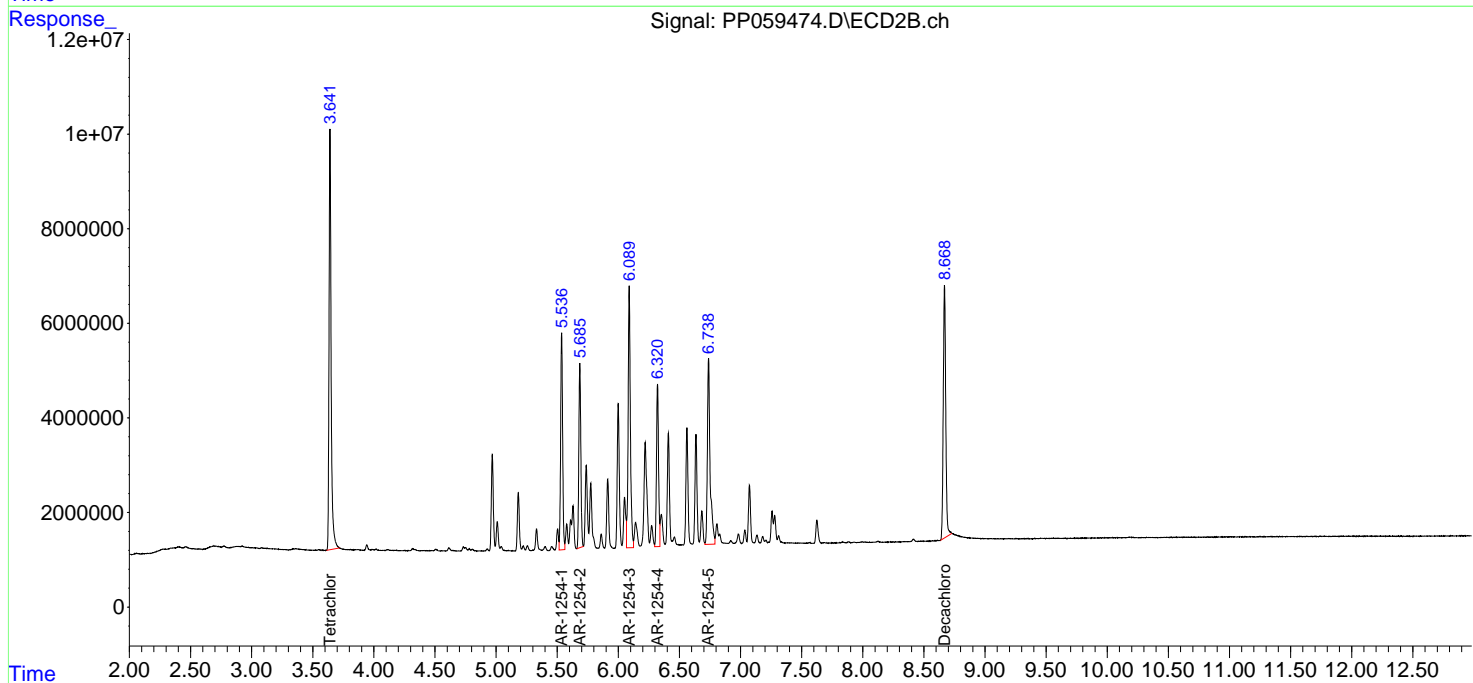
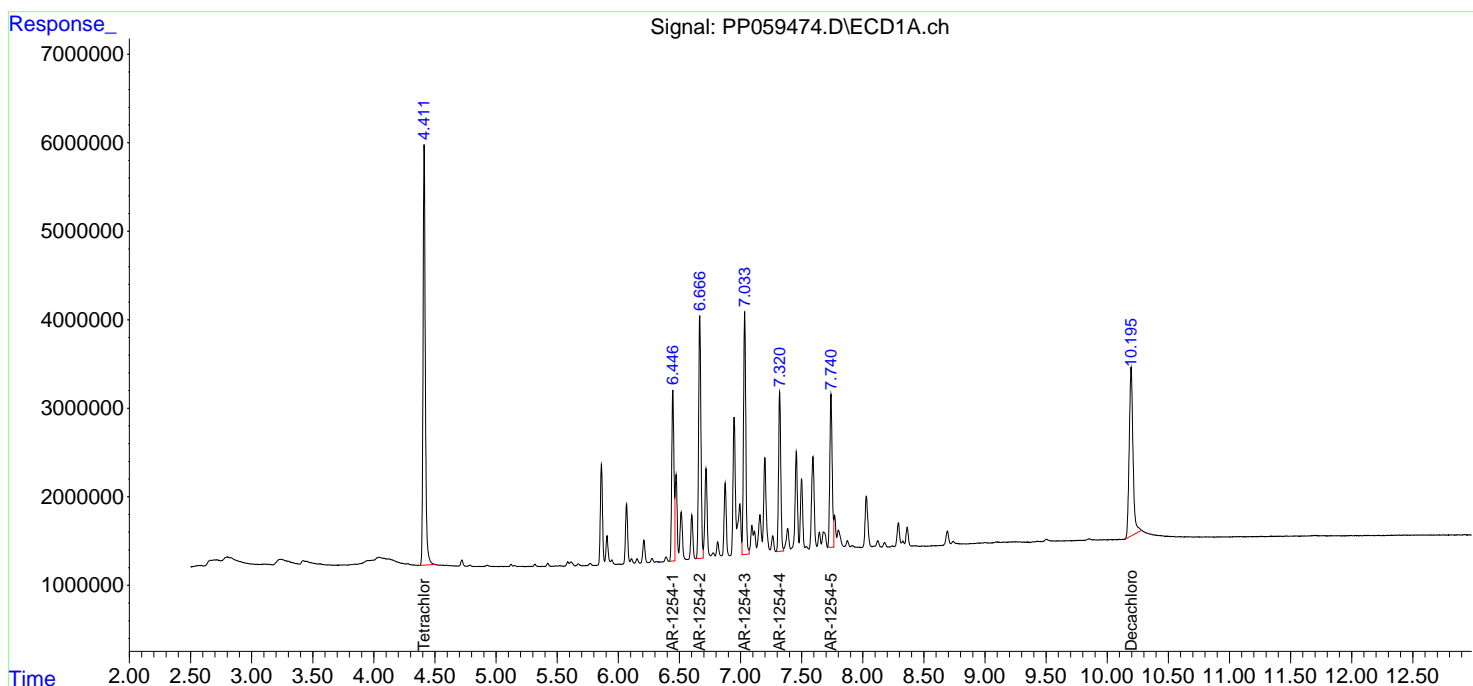
(f)=RT Delta > 1/2 Window (#)=Amounts differ by > 25% (m)=manual int.

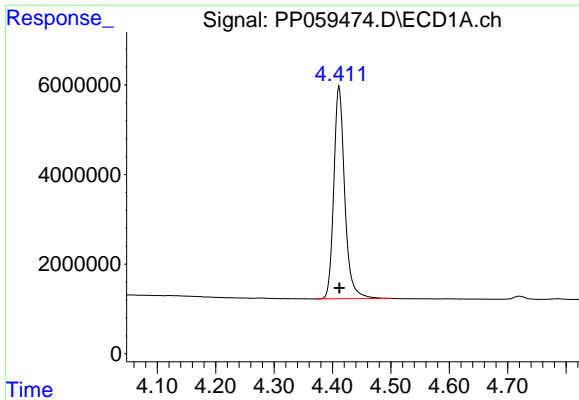
Data Path : Z:\pestpcbsrv\HPCHEM1\ECD_P\Data\PP082323\
 Data File : PP059474.D
 Signal(s) : Signal #1: ECD1A.ch Signal #2: ECD2B.ch
 Acq On : 23 Aug 2023 21:22
 Operator : YP\AJ
 Sample : AR1254ICV500
 Misc :
 ALS Vial : 34 Sample Multiplier: 1

Instrument :
 ECD_P
 ClientSampleId :

Integration File signal 1: autoint1.e
 Integration File signal 2: autoint2.e
 Quant Time: Aug 24 00:21:46 2023
 Quant Method : Z:\pestpcbsrv\HPCHEM1\ECD_P\methods\PP082323.M
 Quant Title : GC EXTRACTABLES
 QLast Update : Thu Aug 24 00:18:25 2023
 Response via : Initial Calibration
 Integrator: ChemStation

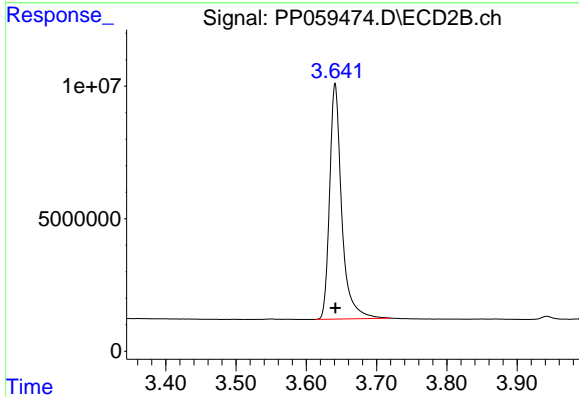
Volume Inj. : 2 µl
 Signal #1 Phase : ZB-MR1 Signal #2 Phase: ZB-MR2
 Signal #1 Info : 30Mx0.32mmx 0.50µ Signal #2 Info : 30M x 0.32mm x 0.25µm



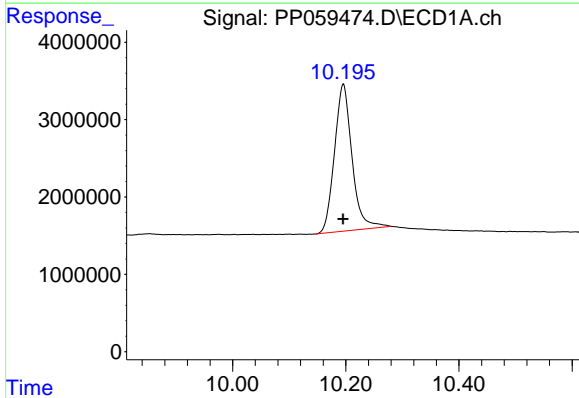


#1 Tetrachloro-m-xylene
 R.T.: 4.412 min
 Delta R.T.: 0.000 min
 Response: 61687287
 Conc: 50.24 ng/ml

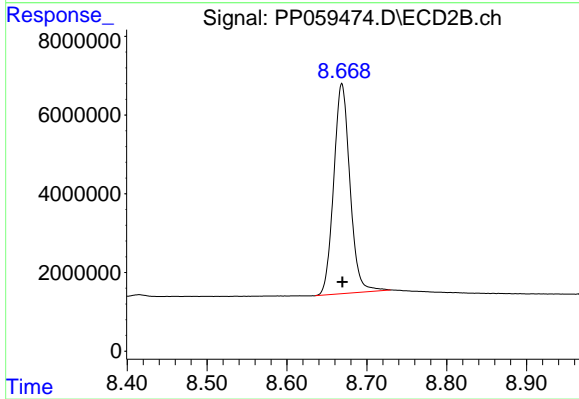
Instrument :
 ECD_P
 ClientSampleId :



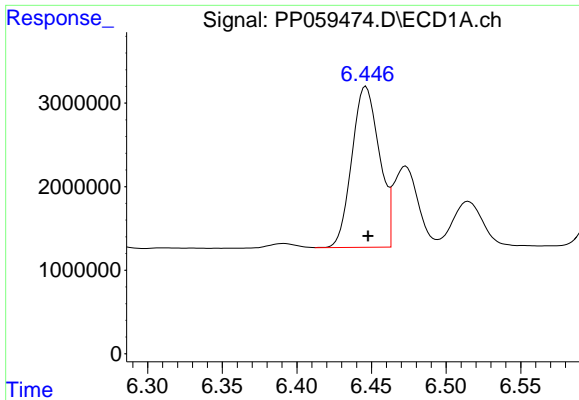
#1 Tetrachloro-m-xylene
 R.T.: 3.641 min
 Delta R.T.: 0.000 min
 Response: 106239117
 Conc: 49.19 ng/ml



#2 Decachlorobiphenyl
 R.T.: 10.196 min
 Delta R.T.: 0.000 min
 Response: 40894854
 Conc: 48.49 ng/ml



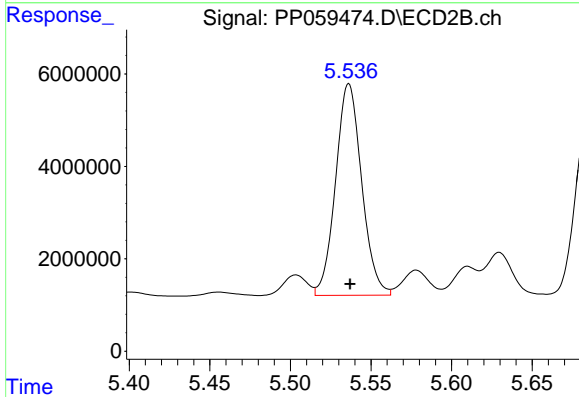
#2 Decachlorobiphenyl
 R.T.: 8.669 min
 Delta R.T.: 0.000 min
 Response: 75404987
 Conc: 51.12 ng/ml



#26 AR-1254-1

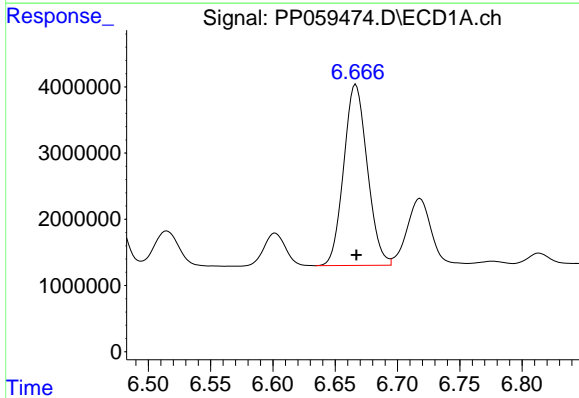
R.T.: 6.446 min
 Delta R.T.: -0.001 min
 Response: 24618711
 Conc: 498.08 ng/ml

Instrument :
 ECD_P
 ClientSampleId :



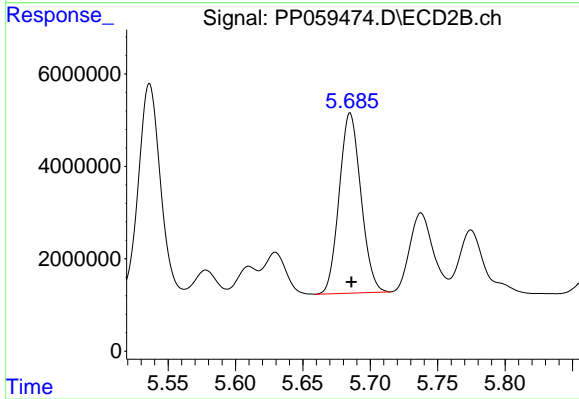
#26 AR-1254-1

R.T.: 5.536 min
 Delta R.T.: 0.000 min
 Response: 51612933
 Conc: 496.78 ng/ml



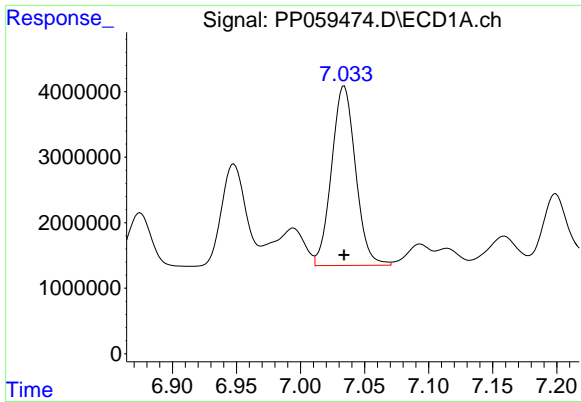
#27 AR-1254-2

R.T.: 6.667 min
 Delta R.T.: 0.000 min
 Response: 36140466
 Conc: 495.58 ng/ml



#27 AR-1254-2

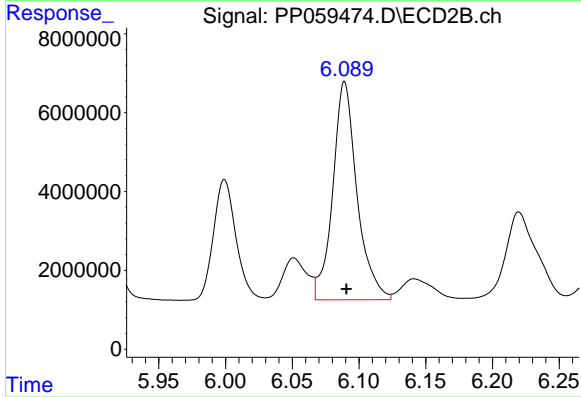
R.T.: 5.685 min
 Delta R.T.: 0.000 min
 Response: 43764394
 Conc: 493.93 ng/ml



#28 AR-1254-3

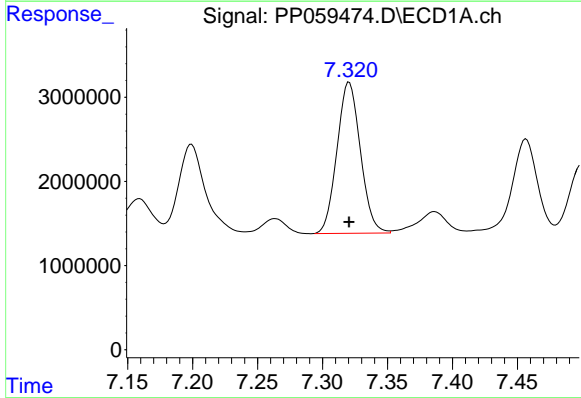
R.T.: 7.034 min
 Delta R.T.: 0.000 min
 Response: 35648979
 Conc: 493.16 ng/ml

Instrument :
 ECD_P
 ClientSampleId :



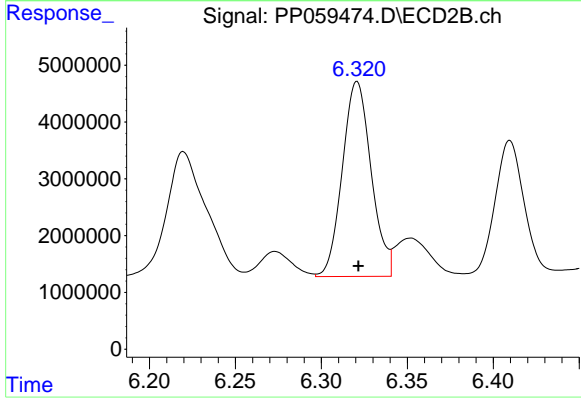
#28 AR-1254-3

R.T.: 6.089 min
 Delta R.T.: -0.001 min
 Response: 70019287
 Conc: 493.17 ng/ml



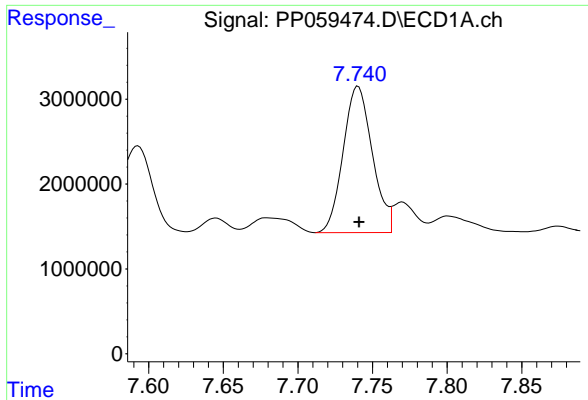
#29 AR-1254-4

R.T.: 7.321 min
 Delta R.T.: 0.000 min
 Response: 22549977
 Conc: 496.43 ng/ml



#29 AR-1254-4

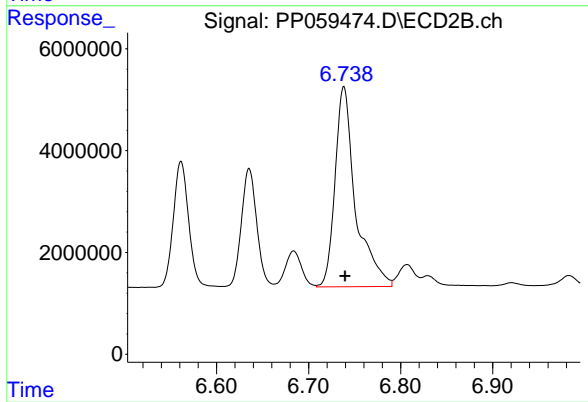
R.T.: 6.321 min
 Delta R.T.: 0.000 min
 Response: 40146080
 Conc: 494.11 ng/ml



#30 AR-1254-5

R.T.: 7.740 min
Delta R.T.: 0.000 min
Response: 23427255
Conc: 492.44 ng/ml

Instrument :
ECD_P
ClientSampleId :



#30 AR-1254-5

R.T.: 6.738 min
Delta R.T.: -0.001 min
Response: 60794147
Conc: 494.41 ng/ml