

Data Path : Z:\pestpcbsrv\HPCHEM1\ECD\_P\Data\PP082421\  
 Data File : PP038858.D  
 Signal(s) : Signal #1: ECD1A.CH Signal #2: ECD2B.CH  
 Acq On : 24 Aug 2021 19:51  
 Operator : AJ\MA  
 Sample : AR1660CCC500  
 Misc :  
 ALS Vial : 3 Sample Multiplier: 1

Instrument :  
 ECD\_P  
 ClientSampled :  
 AR1660CCC500

Integration File signal 1: autoint1.e  
 Integration File signal 2: autoint2.e  
 Quant Time: Aug 25 02:23:48 2021  
 Quant Method : Z:\pestpcbsrv\HPCHEM1\ECD\_P\methods\PP081721.M  
 Quant Title : GC EXTRACTABLES  
 QLast Update : Wed Aug 18 04:51:26 2021  
 Response via : Initial Calibration  
 Integrator: ChemStation 6890 Scale Mode: Small noise peaks clipped

Volume Inj. : 2 µl  
 Signal #1 Phase : ZB-MR1 Signal #2 Phase: ZB-MR2  
 Signal #1 Info : 30Mx0.32mmx 0.50µ Signal #2 Info : 30M x 0.32mm x 0.25µm

Compound	RT#1	RT#2	Resp#1	Resp#2	ng/ml	ng/ml
System Monitoring Compounds						
1) SA Tetrachlo...	4.880	3.867	2030411	1292080	50.310	53.917
2) SA Decachlor...	10.861f	9.124	1331796	1261715	54.130	51.804
Target Compounds						
3) L1 AR-1016-1	6.199	5.110	624428	457163	481.201	524.475
4) L1 AR-1016-2	6.223	5.129	897202	652280	485.499	524.488
5) L1 AR-1016-3	6.288	5.319	561817	354442	491.719	520.515
6) L1 AR-1016-4	6.396	5.373	462772	272915	496.205	521.145
7) L1 AR-1016-5	6.710	5.599	415511	342457	490.170	516.326
8) L2 AR-1221-1	5.127	4.119	71189	45856	152.226	167.610
9) L2 AR-1221-2	5.230	4.219	103395	65933	291.867	308.200
10) L2 AR-1221-3	5.317	4.306	391388	256096	367.503	379.279
11) L3 AR-1232-1	5.317	4.306	391388	256096	395.733	412.309
12) L3 AR-1232-2	5.903	5.129	485169	652280	1041.906	1142.835
13) L3 AR-1232-3	6.223	5.319	897202	354442	1050.884	1212.528
14) L3 AR-1232-4	6.396	5.416	462772	328361	1092.966	1327.151
15) L3 AR-1232-5	6.493	5.599	344564	342457	1282.273	1266.629
16) L4 AR-1242-1	6.199	5.110	624428	457163	626.893	662.134
17) L4 AR-1242-2	6.223	5.129	897202	652280	624.363	668.203
18) L4 AR-1242-3	6.288	5.319	561817	354442	627.555	674.030
19) L4 AR-1242-4	6.396	5.416	462772	328361	631.991	686.946
20) L4 AR-1242-5	7.179	5.977	65442	247289	91.533	399.466 #
21) L5 AR-1248-1	6.199	5.110	624428	457163	783.660	838.965
22) L5 AR-1248-2	6.493	5.373	344564	272915	351.435	367.206
23) L5 AR-1248-3	6.710	5.416	415511	328361	359.961	432.418
24) L5 AR-1248-4	7.139	5.599	80610	342457	65.278	370.238 #
25) L5 AR-1248-5	7.179	6.019	65442	40814	53.524	45.204
26) L6 AR-1254-1	7.107	5.977	268894	247289	235.661	188.298
27) L6 AR-1254-2	7.336	6.137	270872	224665	156.858	195.739
28) L6 AR-1254-3	7.719	6.573	168343	448499	93.778	241.031 #
29) L6 AR-1254-4	8.015	6.794	106551	67890	82.578	58.094 #
30) L6 AR-1254-5	8.444	7.220	751384	834052	607.517	516.021
31) L7 AR-1260-1	7.886	6.691	555886	613801	464.477	524.532
32) L7 AR-1260-2	8.152	6.890	649755	740656	442.857	520.318
33) L7 AR-1260-3	8.517	7.041	479540	695087	499.782	483.318
34) L7 AR-1260-4	8.748	7.523	573621	594277	504.441	529.160
35) L7 AR-1260-5	9.071	7.773	1170781	1427369	521.740	526.961
36) L8 AR-1262-1	8.517	7.220	479540	834052	322.587	922.748 #
37) L8 AR-1262-2	9.071	7.773	1170781	1427369	439.745	461.994
38) L8 AR-1262-3	9.378	8.057	270207	333804	226.782	265.686
39) L8 AR-1262-4	9.469	8.120	200886	1082652	249.351	458.095 #
40) L8 AR-1262-5	10.128	8.619	400328	415846	375.569	365.738
41) L9 AR-1268-1	9.378	8.057	270207	333804	84.240	91.413

Data Path : Z:\pestpcbsrv\HPCHEM1\ECD\_P\Data\PP082421\  
 Data File : PP038858.D  
 Signal(s) : Signal #1: ECD1A.CH Signal #2: ECD2B.CH  
 Acq On : 24 Aug 2021 19:51  
 Operator : AJ\MA  
 Sample : AR1660CCC500  
 Misc :  
 ALS Vial : 3 Sample Multiplier: 1

Instrument :  
 ECD\_P  
 ClientSampleId :  
 AR1660CCC500

Integration File signal 1: autoint1.e  
 Integration File signal 2: autoint2.e  
 Quant Time: Aug 25 02:23:48 2021  
 Quant Method : Z:\pestpcbsrv\HPCHEM1\ECD\_P\methods\PP081721.M  
 Quant Title : GC EXTRACTABLES  
 QLast Update : Wed Aug 18 04:51:26 2021  
 Response via : Initial Calibration  
 Integrator: ChemStation 6890 Scale Mode: Small noise peaks clipped

Volume Inj. : 2 µl  
 Signal #1 Phase : ZB-MR1 Signal #2 Phase: ZB-MR2  
 Signal #1 Info : 30Mx0.32mmx 0.50µ Signal #2 Info : 30M x 0.32mm x 0.25µm

	Compound	RT#1	RT#2	Resp#1	Resp#2	ng/ml	ng/ml
42)	L9 AR-1268-2	9.469	8.120	200886	1082652	65.204	313.833 #
43)	L9 AR-1268-3	9.697	8.328	19704	17354	7.412	5.961
44)	L9 AR-1268-4	10.128	8.619	400328	415846	328.607	328.805
45)	L9 AR-1268-5	10.533	8.892	123304	117888	12.942	12.130

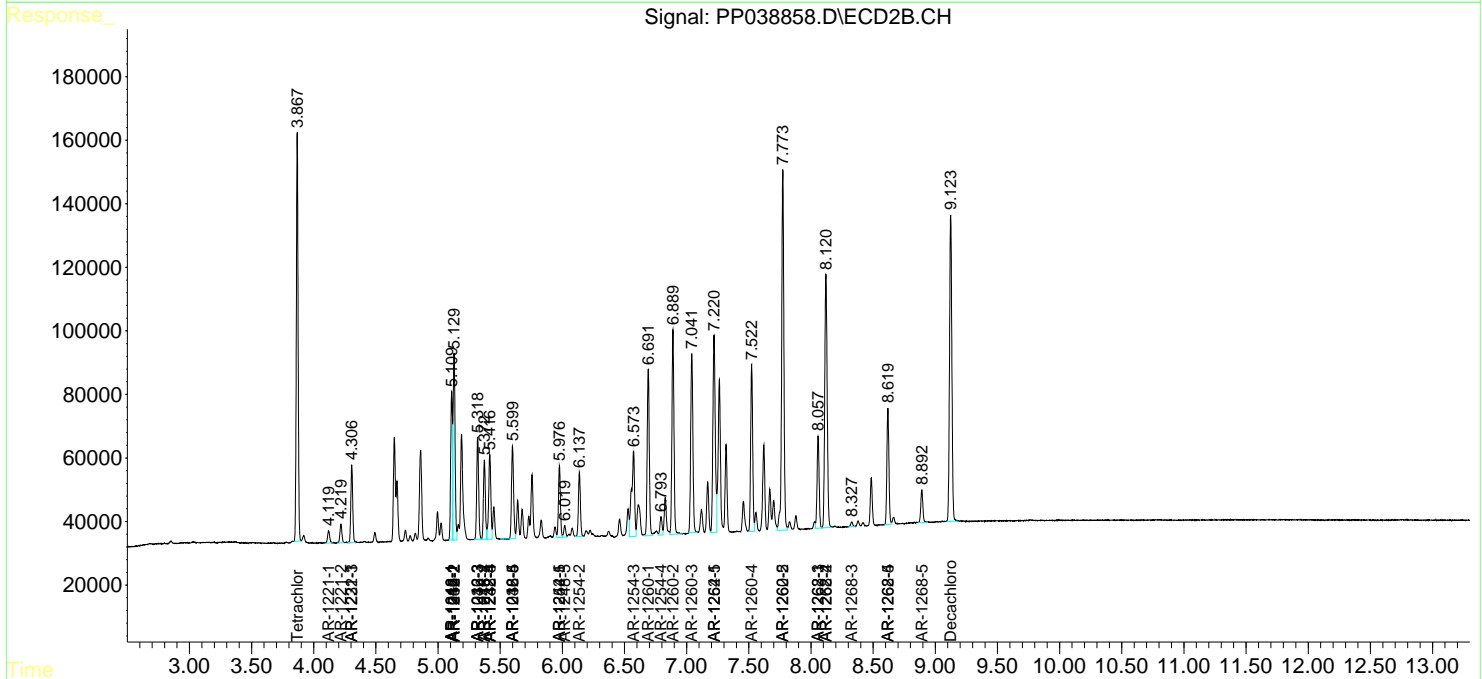
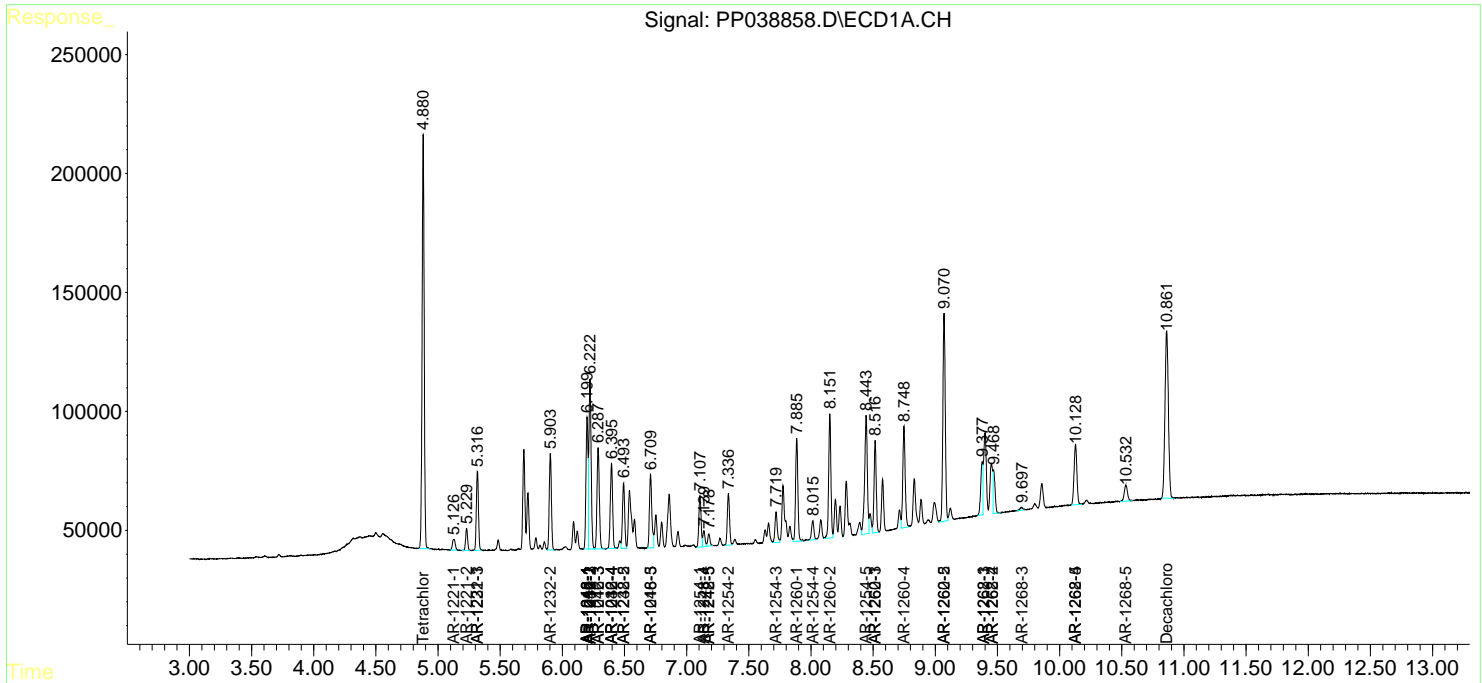
(f)=RT Delta > 1/2 Window (#)=Amounts differ by > 25% (m)=manual int.

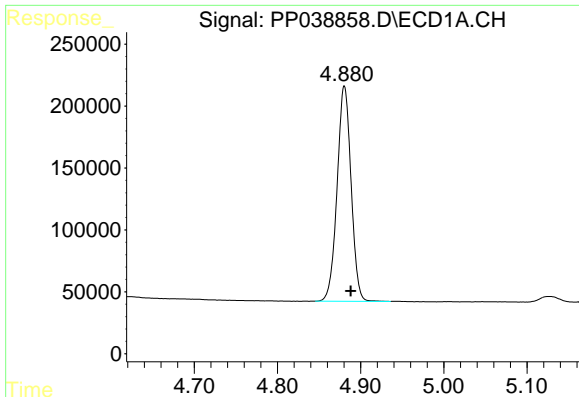
Data Path : Z:\pestpcbsrv\HPCHEM1\ECD\_P\Data\PP082421\  
 Data File : PP038858.D  
 Signal(s) : Signal #1: ECD1A.CH Signal #2: ECD2B.CH  
 Acq On : 24 Aug 2021 19:51  
 Operator : AJ\MA  
 Sample : AR1660CCC500  
 Misc :  
 ALS Vial : 3 Sample Multiplier: 1

Instrument :  
 ECD\_P  
 Client Sampled :  
 AR1660CCC500

Integration File signal 1: autoint1.e  
 Integration File signal 2: autoint2.e  
 Quant Time: Aug 25 02:23:48 2021  
 Quant Method : Z:\pestpcbsrv\HPCHEM1\ECD\_P\methods\PP081721.M  
 Quant Title : GC EXTRACTABLES  
 QLast Update : Wed Aug 18 04:51:26 2021  
 Response via : Initial Calibration  
 Integrator: ChemStation 6890 Scale Mode: Small noise peaks clipped

Volume Inj. : 2 µl  
 Signal #1 Phase : ZB-MR1 Signal #2 Phase: ZB-MR2  
 Signal #1 Info : 30Mx0.32mmx 0.50µ Signal #2 Info : 30M x 0.32mm x 0.25µm

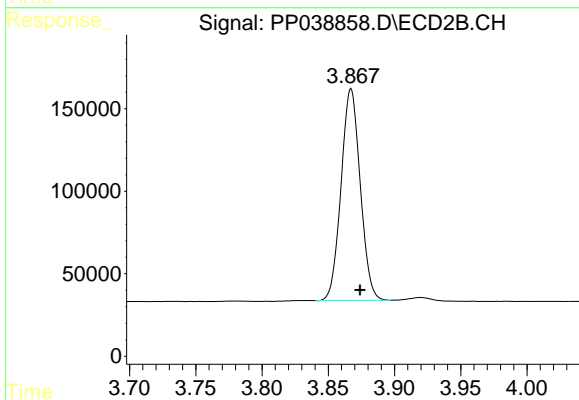




#1 Tetrachloro-m-xylene

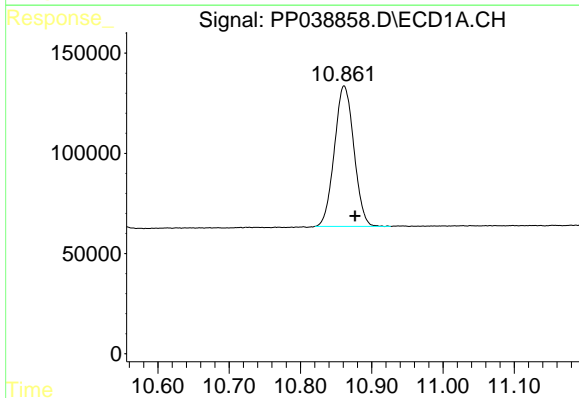
R.T.: 4.880 min  
 Delta R.T.: -0.008 min  
 Response: 2030411  
 Conc: 50.31 ng/ml

Instrument :  
 ECD\_P  
 ClientSampleId :  
 AR1660CCC500



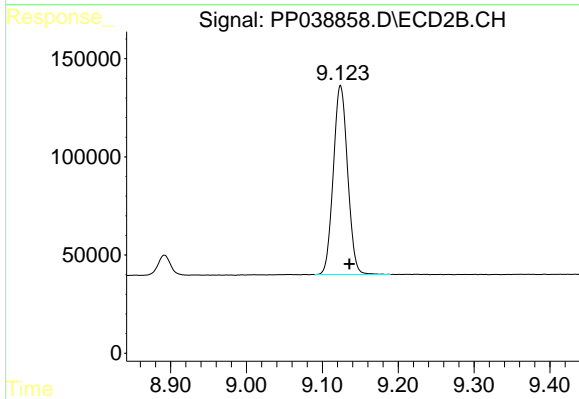
#1 Tetrachloro-m-xylene

R.T.: 3.867 min  
 Delta R.T.: -0.007 min  
 Response: 1292080  
 Conc: 53.92 ng/ml



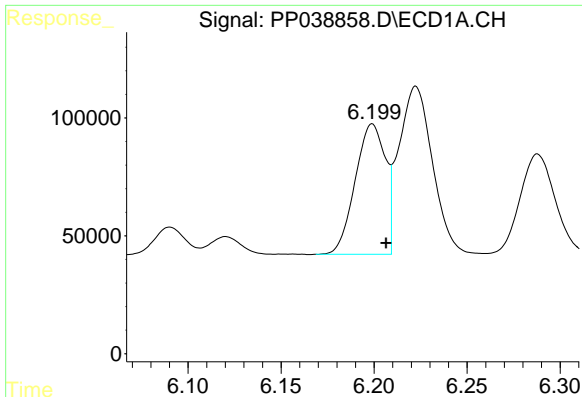
#2 Decachlorobiphenyl

R.T.: 10.861 min  
 Delta R.T.: -0.016 min  
 Response: 1331796  
 Conc: 54.13 ng/ml



#2 Decachlorobiphenyl

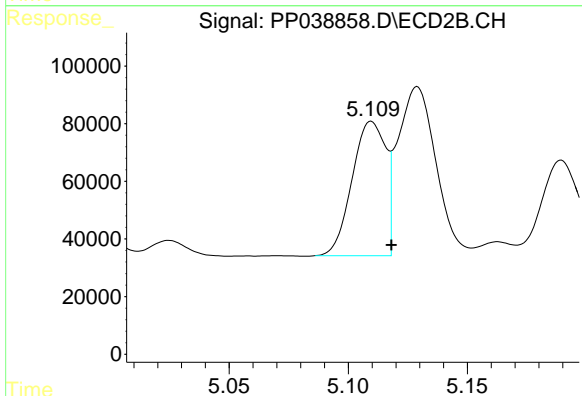
R.T.: 9.124 min  
 Delta R.T.: -0.012 min  
 Response: 1261715  
 Conc: 51.80 ng/ml



#3 AR-1016-1

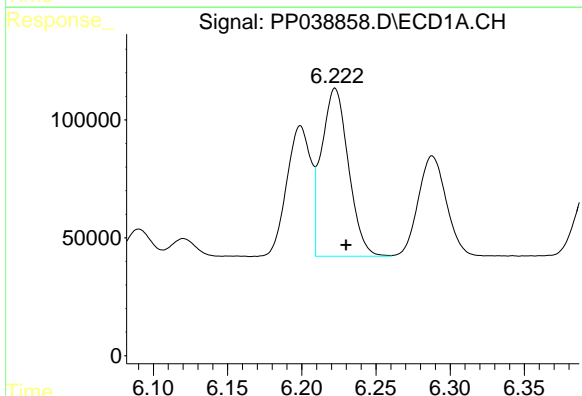
R.T.: 6.199 min  
 Delta R.T.: -0.007 min  
 Response: 624428  
 Conc: 481.20 ng/ml

Instrument :  
 ECD\_P  
 ClientSampleId :  
 AR1660CCC500



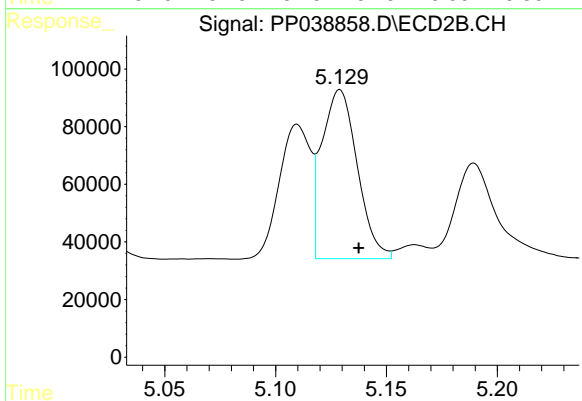
#3 AR-1016-1

R.T.: 5.110 min  
 Delta R.T.: -0.008 min  
 Response: 457163  
 Conc: 524.48 ng/ml



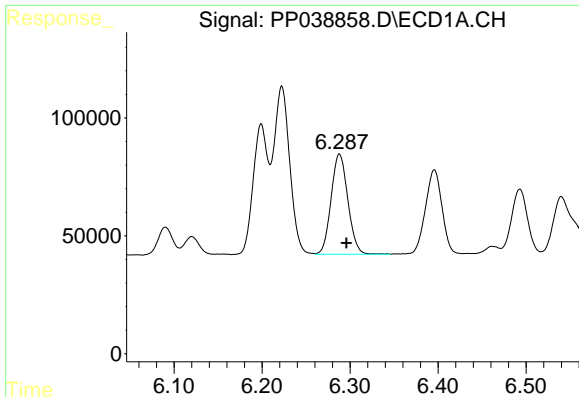
#4 AR-1016-2

R.T.: 6.223 min  
 Delta R.T.: -0.007 min  
 Response: 897202  
 Conc: 485.50 ng/ml



#4 AR-1016-2

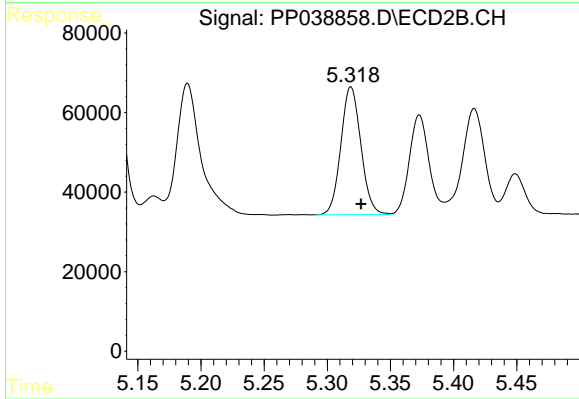
R.T.: 5.129 min  
 Delta R.T.: -0.009 min  
 Response: 652280  
 Conc: 524.49 ng/ml



#5 AR-1016-3

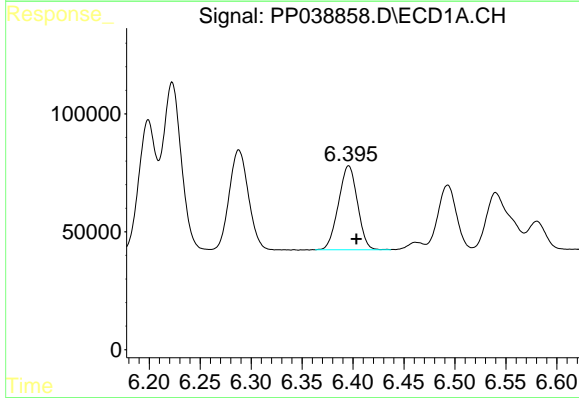
R.T.: 6.288 min  
 Delta R.T.: -0.008 min  
 Response: 561817  
 Conc: 491.72 ng/ml

Instrument :  
 ECD\_P  
 ClientSampleId :  
 AR1660CCC500



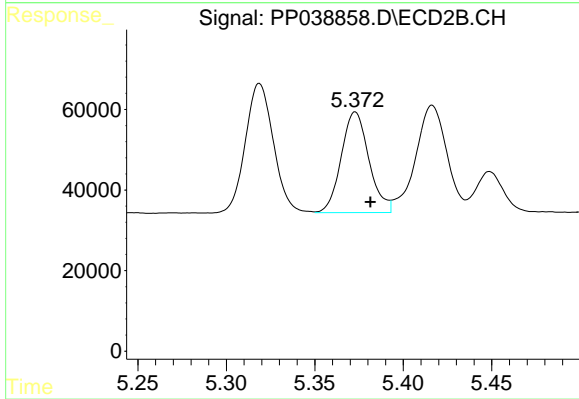
#5 AR-1016-3

R.T.: 5.319 min  
 Delta R.T.: -0.008 min  
 Response: 354442  
 Conc: 520.52 ng/ml



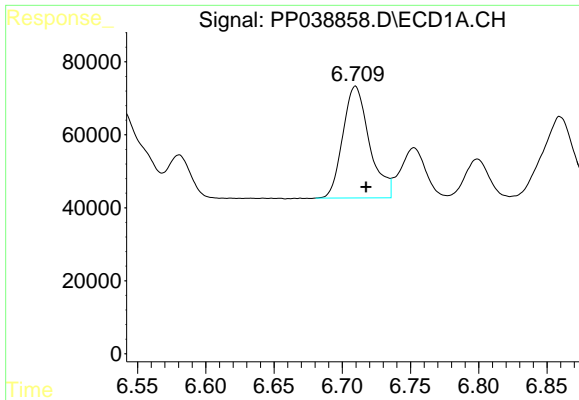
#6 AR-1016-4

R.T.: 6.396 min  
 Delta R.T.: -0.008 min  
 Response: 462772  
 Conc: 496.20 ng/ml



#6 AR-1016-4

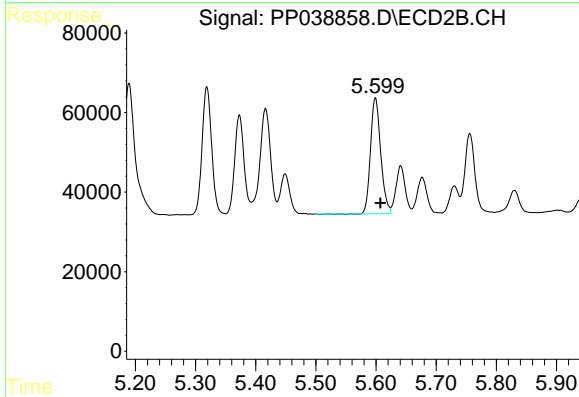
R.T.: 5.373 min  
 Delta R.T.: -0.008 min  
 Response: 272915  
 Conc: 521.15 ng/ml



#7 AR-1016-5

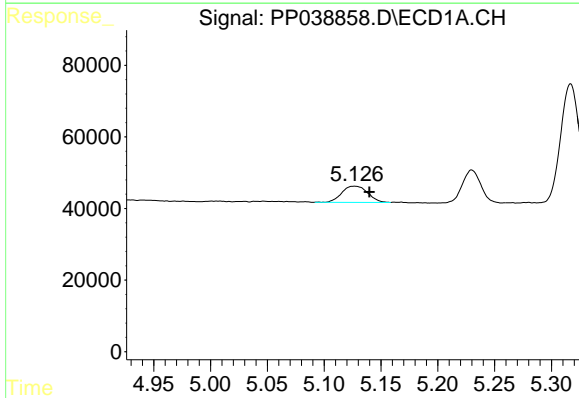
R.T.: 6.710 min  
 Delta R.T.: -0.008 min  
 Response: 415511  
 Conc: 490.17 ng/ml

Instrument :  
 ECD\_P  
 ClientSampleId :  
 AR1660CCC500



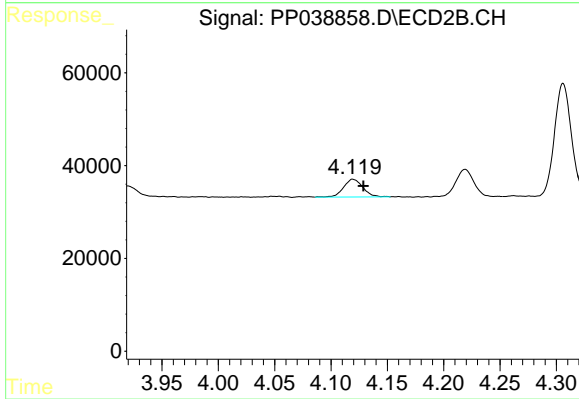
#7 AR-1016-5

R.T.: 5.599 min  
 Delta R.T.: -0.008 min  
 Response: 342457  
 Conc: 516.33 ng/ml



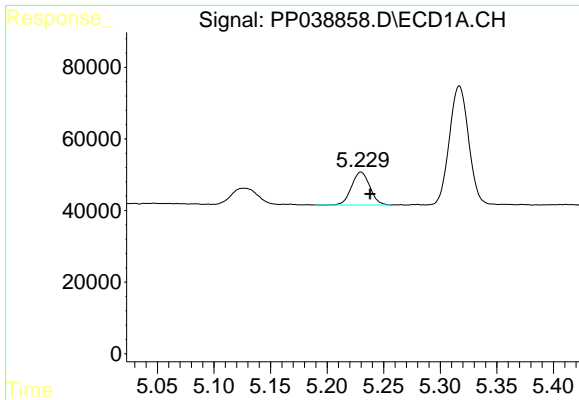
#8 AR-1221-1

R.T.: 5.127 min  
 Delta R.T.: -0.013 min  
 Response: 71189  
 Conc: 152.23 ng/ml



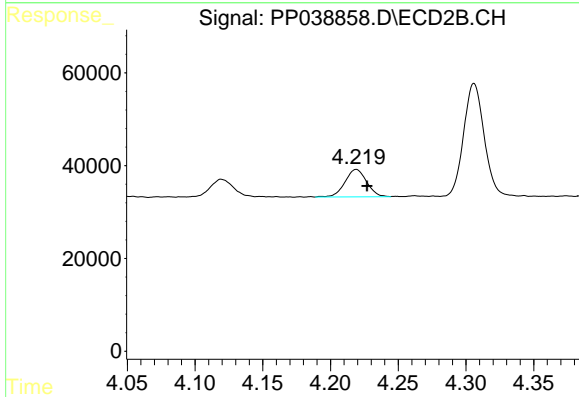
#8 AR-1221-1

R.T.: 4.119 min  
 Delta R.T.: -0.009 min  
 Response: 45856  
 Conc: 167.61 ng/ml

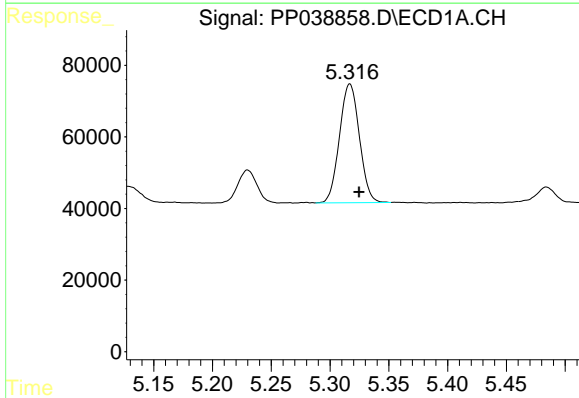


#9 AR-1221-2  
 R.T.: 5.230 min  
 Delta R.T.: -0.008 min  
 Response: 103395  
 Conc: 291.87 ng/ml

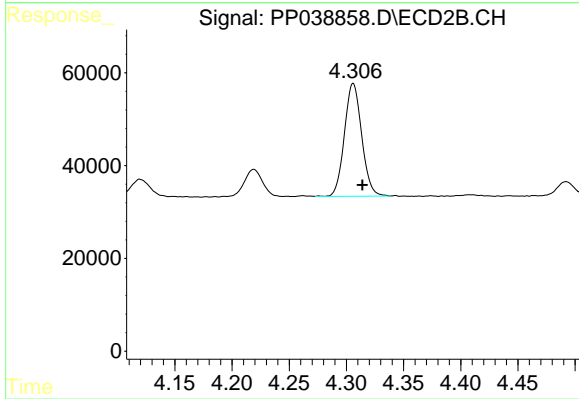
Instrument :  
 ECD\_P  
 ClientSampleId :  
 AR1660CCC500



#9 AR-1221-2  
 R.T.: 4.219 min  
 Delta R.T.: -0.008 min  
 Response: 65933  
 Conc: 308.20 ng/ml

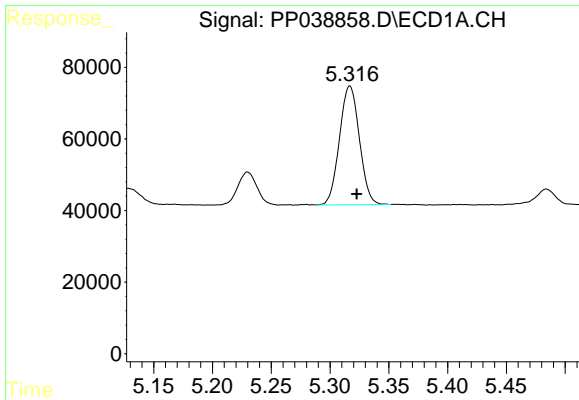


#10 AR-1221-3  
 R.T.: 5.317 min  
 Delta R.T.: -0.008 min  
 Response: 391388  
 Conc: 367.50 ng/ml



#10 AR-1221-3  
 R.T.: 4.306 min  
 Delta R.T.: -0.008 min  
 Response: 256096  
 Conc: 379.28 ng/ml

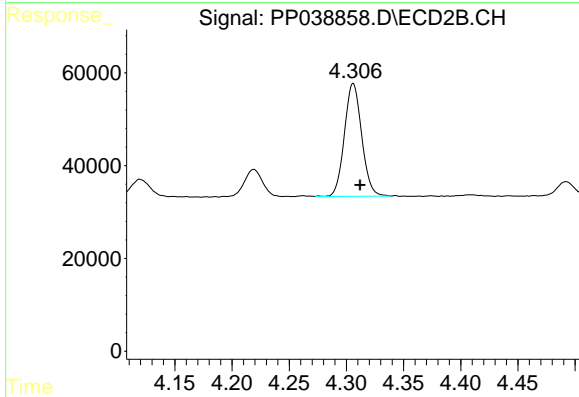




#11 AR-1232-1

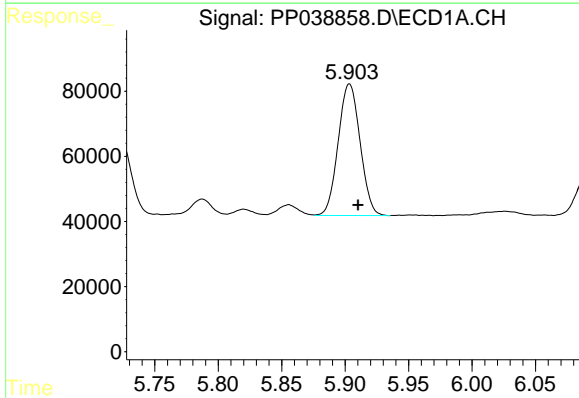
R.T.: 5.317 min  
 Delta R.T.: -0.006 min  
 Response: 391388  
 Conc: 395.73 ng/ml

Instrument :  
 ECD\_P  
 ClientSampleId :  
 AR1660CCC500



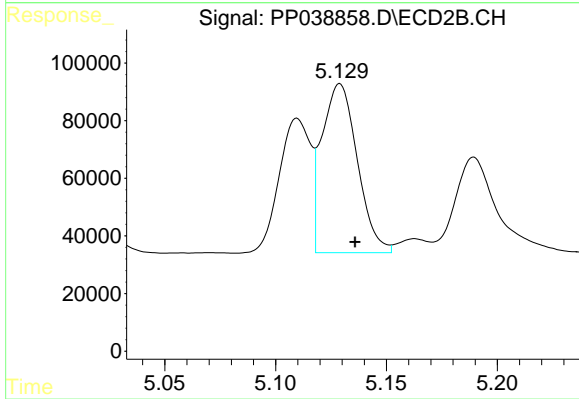
#11 AR-1232-1

R.T.: 4.306 min  
 Delta R.T.: -0.006 min  
 Response: 256096  
 Conc: 412.31 ng/ml



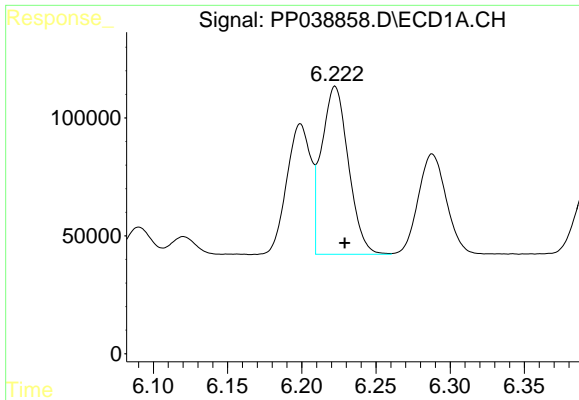
#12 AR-1232-2

R.T.: 5.903 min  
 Delta R.T.: -0.007 min  
 Response: 485169  
 Conc: 1041.91 ng/ml



#12 AR-1232-2

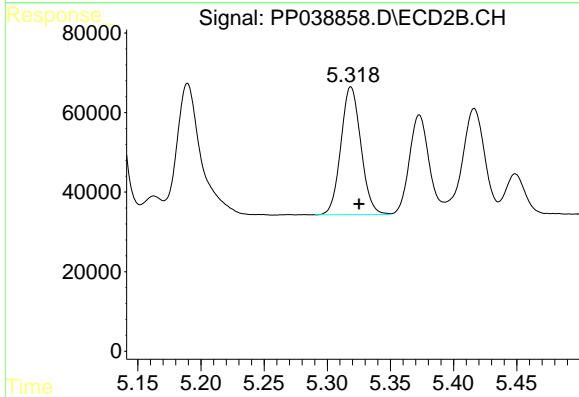
R.T.: 5.129 min  
 Delta R.T.: -0.007 min  
 Response: 652280  
 Conc: 1142.84 ng/ml



#13 AR-1232-3

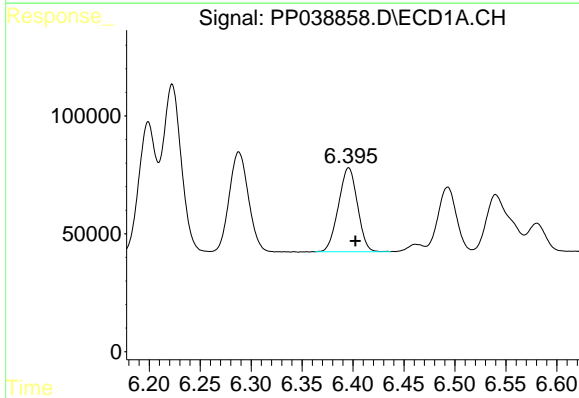
R.T.: 6.223 min  
 Delta R.T.: -0.006 min  
 Response: 897202  
 Conc: 1050.88 ng/ml

Instrument :  
 ECD\_P  
 ClientSampleId :  
 AR1660CCC500



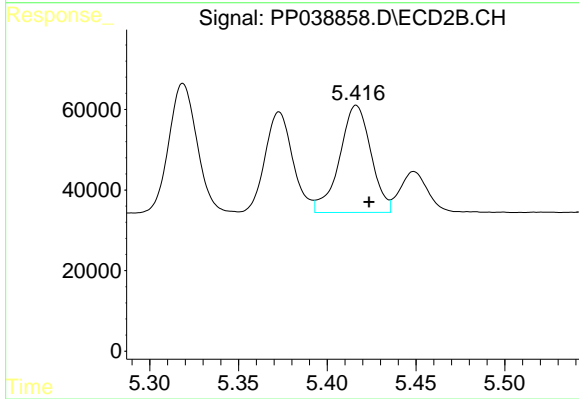
#13 AR-1232-3

R.T.: 5.319 min  
 Delta R.T.: -0.006 min  
 Response: 354442  
 Conc: 1212.53 ng/ml



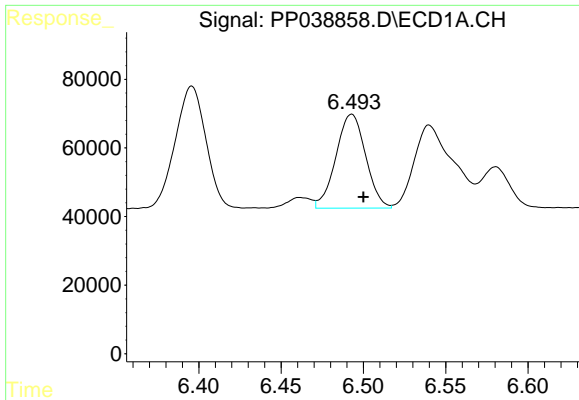
#14 AR-1232-4

R.T.: 6.396 min  
 Delta R.T.: -0.007 min  
 Response: 462772  
 Conc: 1092.97 ng/ml



#14 AR-1232-4

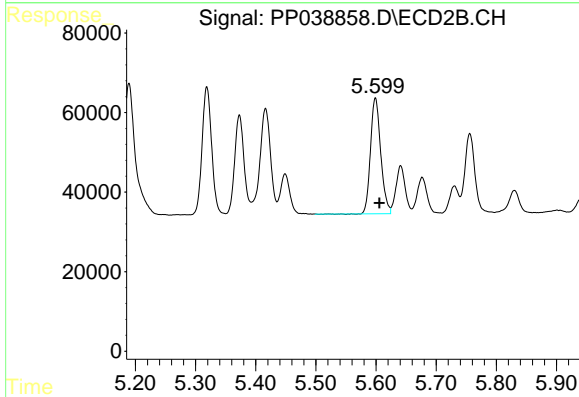
R.T.: 5.416 min  
 Delta R.T.: -0.007 min  
 Response: 328361  
 Conc: 1327.15 ng/ml



#15 AR-1232-5

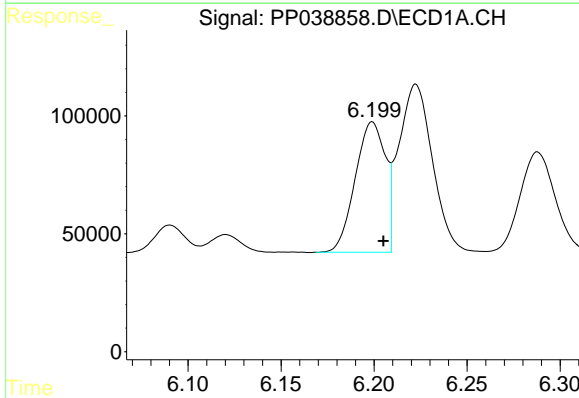
R.T.: 6.493 min  
 Delta R.T.: -0.007 min  
 Response: 344564  
 Conc: 1282.27 ng/ml

**Instrument :**  
 ECD\_P  
**ClientSampleId :**  
 AR1660CCC500



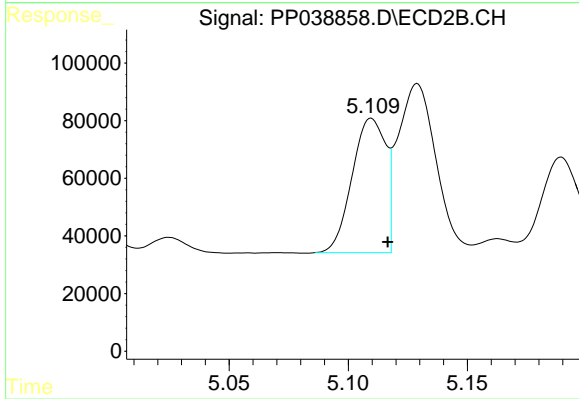
#15 AR-1232-5

R.T.: 5.599 min  
 Delta R.T.: -0.006 min  
 Response: 342457  
 Conc: 1266.63 ng/ml



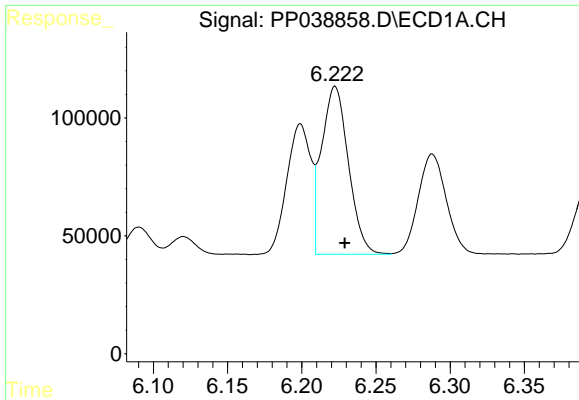
#16 AR-1242-1

R.T.: 6.199 min  
 Delta R.T.: -0.006 min  
 Response: 624428  
 Conc: 626.89 ng/ml



#16 AR-1242-1

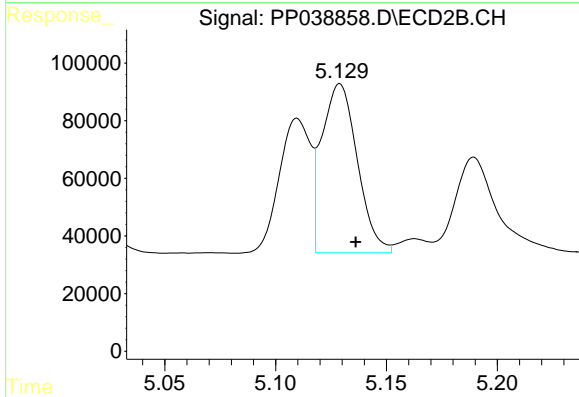
R.T.: 5.110 min  
 Delta R.T.: -0.007 min  
 Response: 457163  
 Conc: 662.13 ng/ml



#17 AR-1242-2

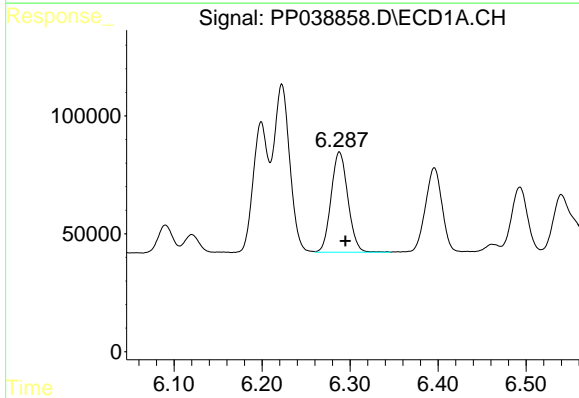
R.T.: 6.223 min  
 Delta R.T.: -0.006 min  
 Response: 897202  
 Conc: 624.36 ng/ml

Instrument :  
 ECD\_P  
 ClientSampled :  
 AR1660CCC500



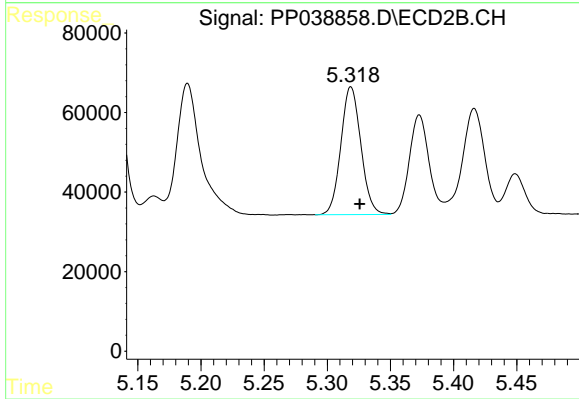
#17 AR-1242-2

R.T.: 5.129 min  
 Delta R.T.: -0.007 min  
 Response: 652280  
 Conc: 668.20 ng/ml



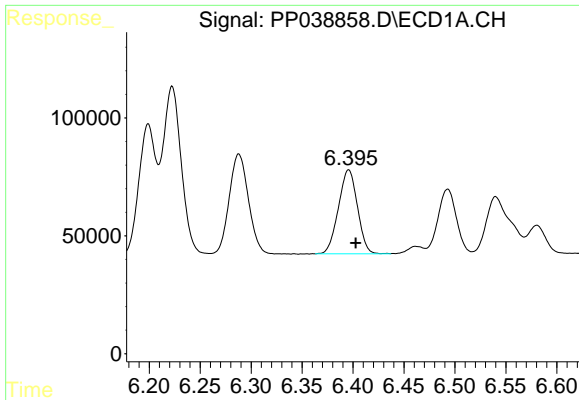
#18 AR-1242-3

R.T.: 6.288 min  
 Delta R.T.: -0.007 min  
 Response: 561817  
 Conc: 627.55 ng/ml



#18 AR-1242-3

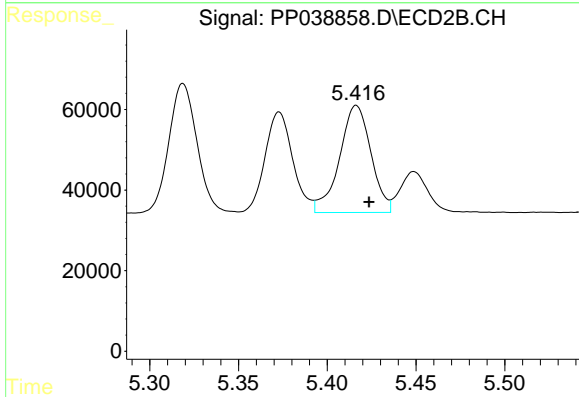
R.T.: 5.319 min  
 Delta R.T.: -0.007 min  
 Response: 354442  
 Conc: 674.03 ng/ml



#19 AR-1242-4

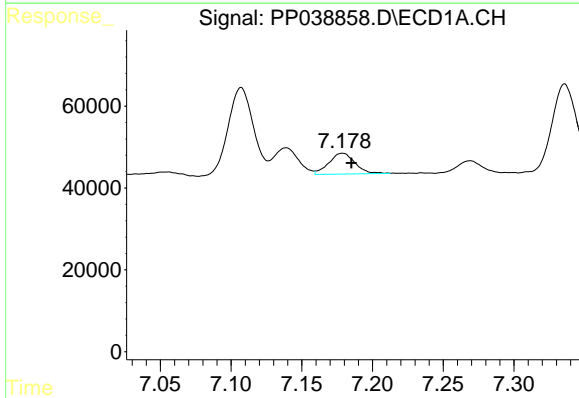
R.T.: 6.396 min  
 Delta R.T.: -0.007 min  
 Response: 462772  
 Conc: 631.99 ng/ml

Instrument :  
 ECD\_P  
 ClientSampleId :  
 AR1660CCC500



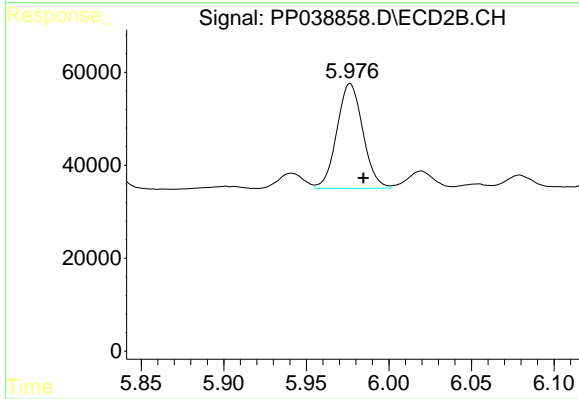
#19 AR-1242-4

R.T.: 5.416 min  
 Delta R.T.: -0.007 min  
 Response: 328361  
 Conc: 686.95 ng/ml



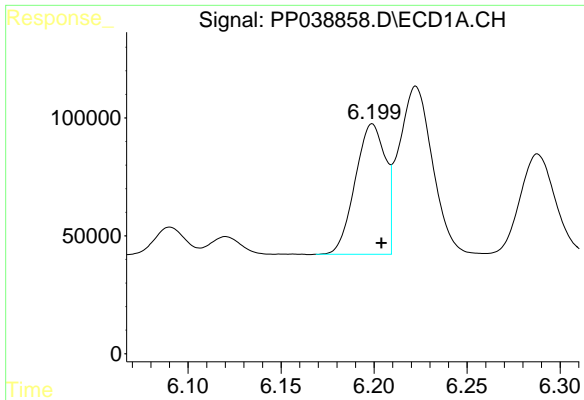
#20 AR-1242-5

R.T.: 7.179 min  
 Delta R.T.: -0.006 min  
 Response: 65442  
 Conc: 91.53 ng/ml



#20 AR-1242-5

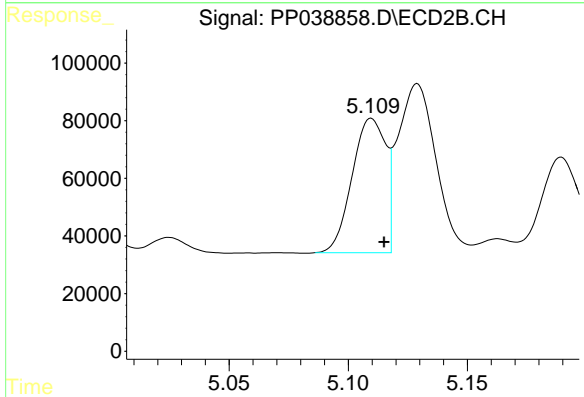
R.T.: 5.977 min  
 Delta R.T.: -0.008 min  
 Response: 247289  
 Conc: 399.47 ng/ml



#21 AR-1248-1

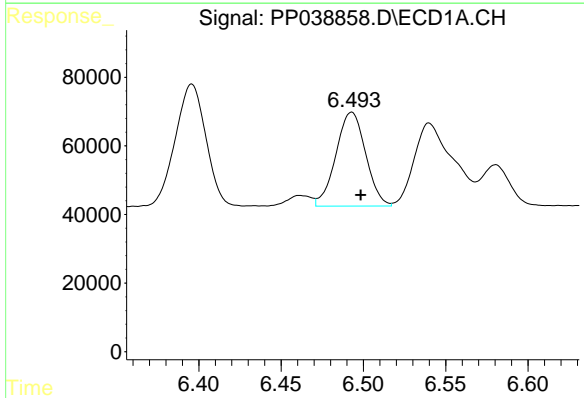
R.T.: 6.199 min  
 Delta R.T.: -0.005 min  
 Response: 624428  
 Conc: 783.66 ng/ml

Instrument :  
 ECD\_P  
 ClientSampleId :  
 AR1660CCC500



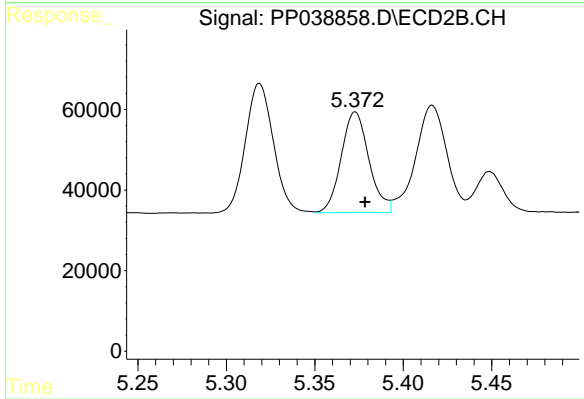
#21 AR-1248-1

R.T.: 5.110 min  
 Delta R.T.: -0.005 min  
 Response: 457163  
 Conc: 838.97 ng/ml



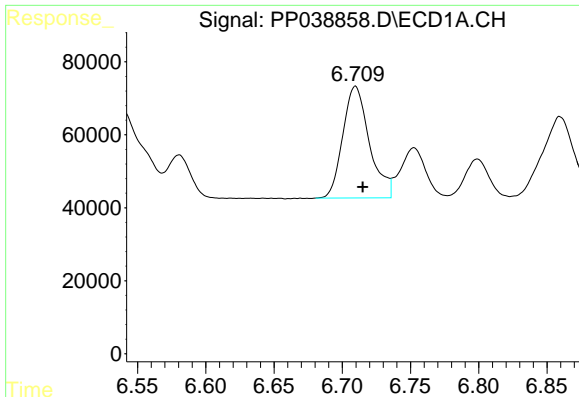
#22 AR-1248-2

R.T.: 6.493 min  
 Delta R.T.: -0.005 min  
 Response: 344564  
 Conc: 351.44 ng/ml



#22 AR-1248-2

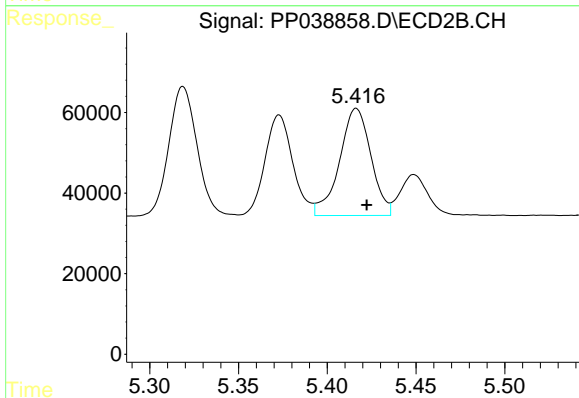
R.T.: 5.373 min  
 Delta R.T.: -0.006 min  
 Response: 272915  
 Conc: 367.21 ng/ml



#23 AR-1248-3

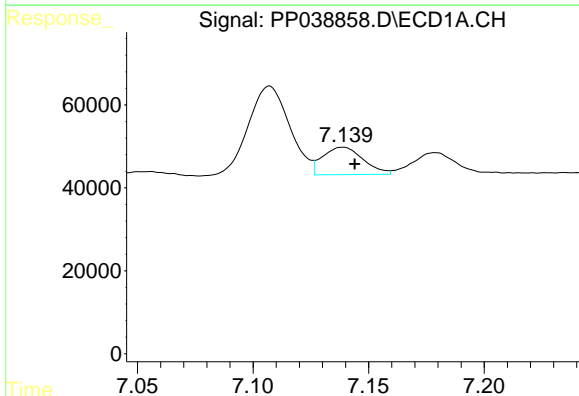
R.T.: 6.710 min  
 Delta R.T.: -0.005 min  
 Response: 415511  
 Conc: 359.96 ng/ml

Instrument :  
 ECD\_P  
 ClientSampleId :  
 AR1660CCC500



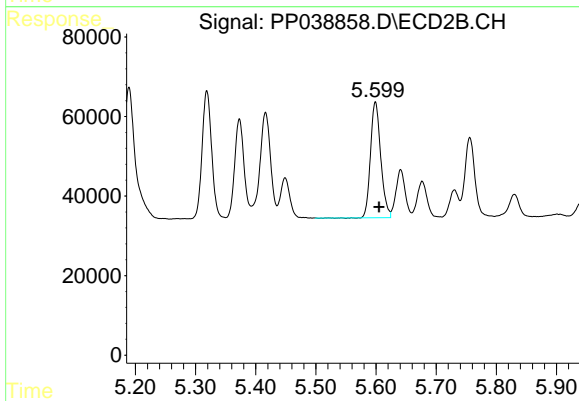
#23 AR-1248-3

R.T.: 5.416 min  
 Delta R.T.: -0.006 min  
 Response: 328361  
 Conc: 432.42 ng/ml



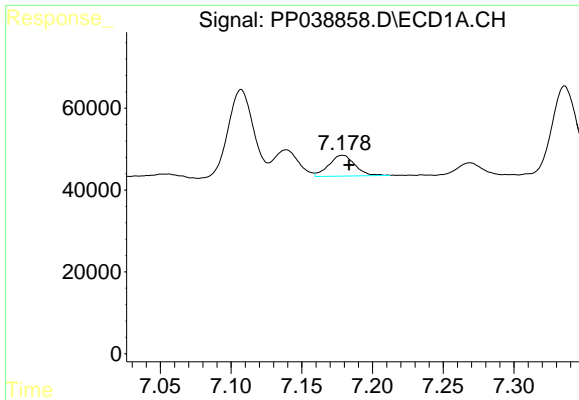
#24 AR-1248-4

R.T.: 7.139 min  
 Delta R.T.: -0.005 min  
 Response: 80610  
 Conc: 65.28 ng/ml



#24 AR-1248-4

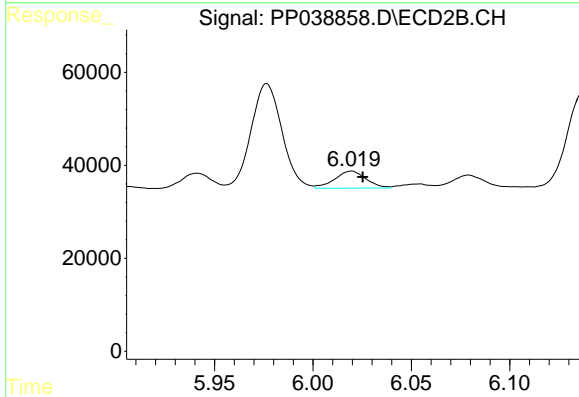
R.T.: 5.599 min  
 Delta R.T.: -0.006 min  
 Response: 342457  
 Conc: 370.24 ng/ml



#25 AR-1248-5

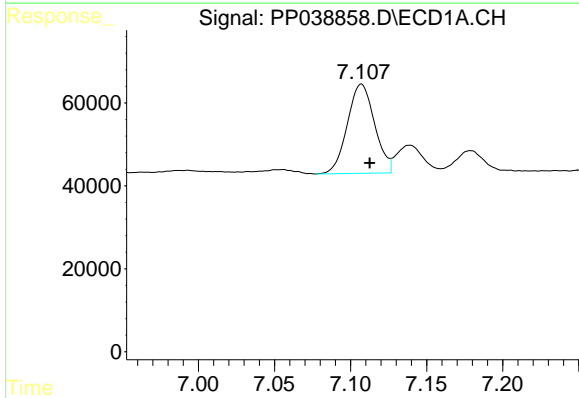
R.T.: 7.179 min  
 Delta R.T.: -0.005 min  
 Response: 65442  
 Conc: 53.52 ng/ml

**Instrument :**  
 ECD\_P  
**ClientSampleId :**  
 AR1660CCC500



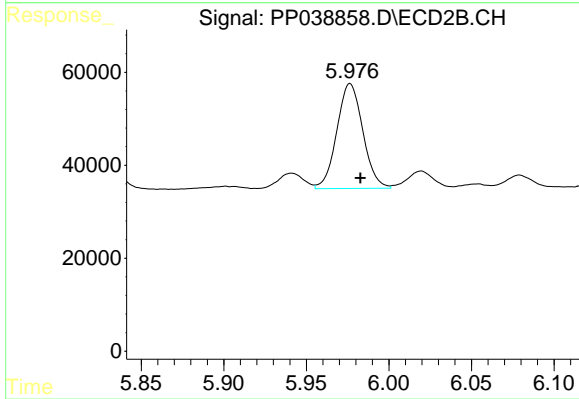
#25 AR-1248-5

R.T.: 6.019 min  
 Delta R.T.: -0.006 min  
 Response: 40814  
 Conc: 45.20 ng/ml



#26 AR-1254-1

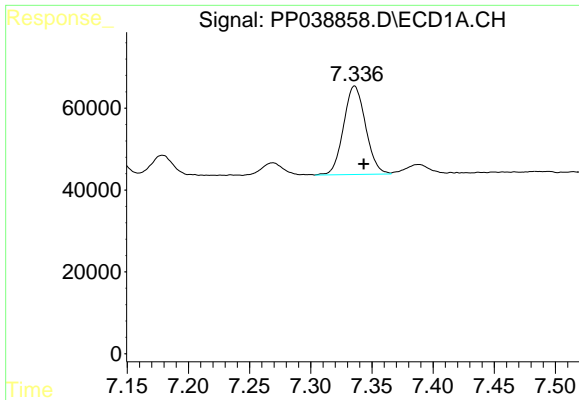
R.T.: 7.107 min  
 Delta R.T.: -0.006 min  
 Response: 268894  
 Conc: 235.66 ng/ml



#26 AR-1254-1

R.T.: 5.977 min  
 Delta R.T.: -0.006 min  
 Response: 247289  
 Conc: 188.30 ng/ml

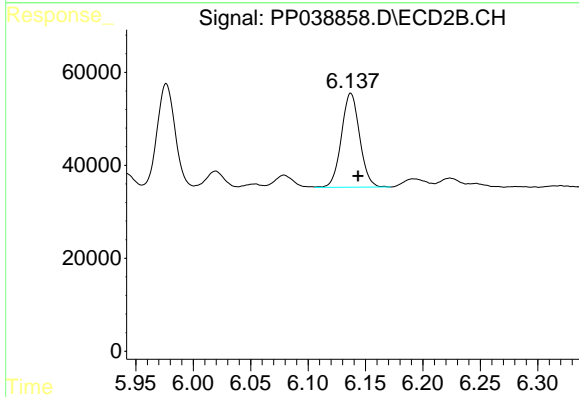




#27 AR-1254-2

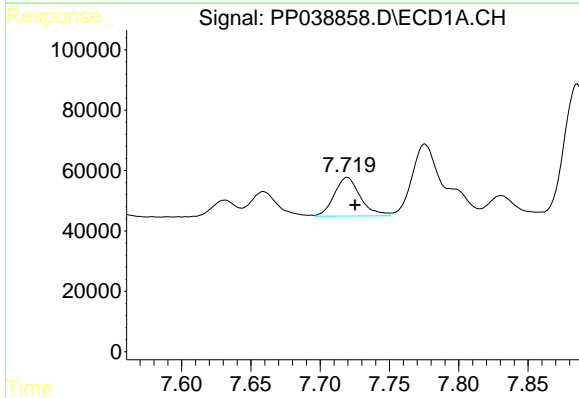
R.T.: 7.336 min  
 Delta R.T.: -0.007 min  
 Response: 270872  
 Conc: 156.86 ng/ml

Instrument :  
 ECD\_P  
 ClientSampleId :  
 AR1660CCC500



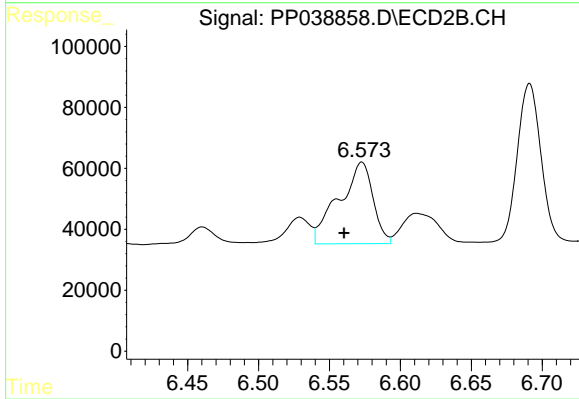
#27 AR-1254-2

R.T.: 6.137 min  
 Delta R.T.: -0.006 min  
 Response: 224665  
 Conc: 195.74 ng/ml



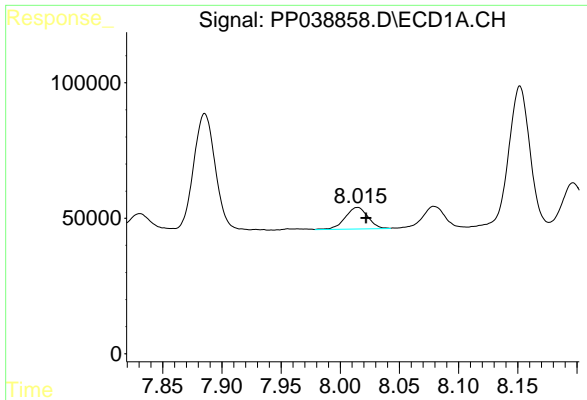
#28 AR-1254-3

R.T.: 7.719 min  
 Delta R.T.: -0.006 min  
 Response: 168343  
 Conc: 93.78 ng/ml



#28 AR-1254-3

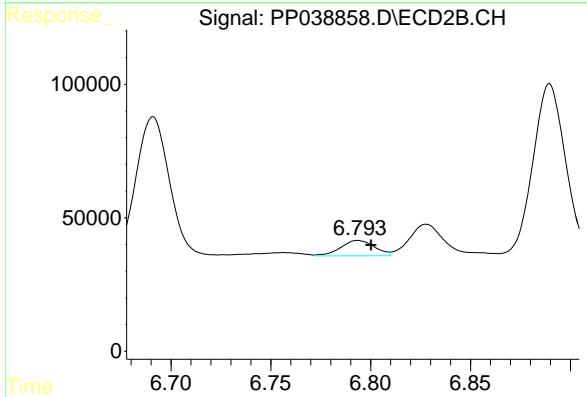
R.T.: 6.573 min  
 Delta R.T.: 0.013 min  
 Response: 448499  
 Conc: 241.03 ng/ml



#29 AR-1254-4

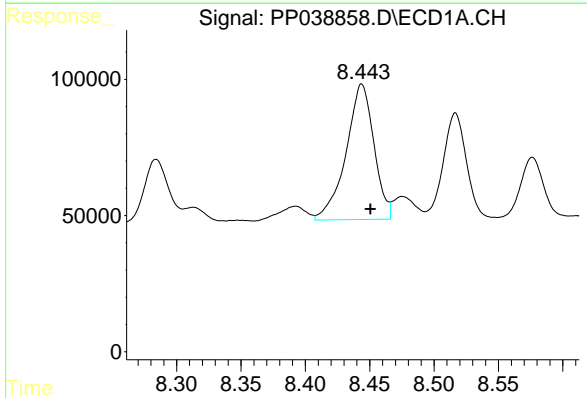
R.T.: 8.015 min  
 Delta R.T.: -0.007 min  
 Response: 106551  
 Conc: 82.58 ng/ml

Instrument :  
 ECD\_P  
 ClientSampleId :  
 AR1660CCC500



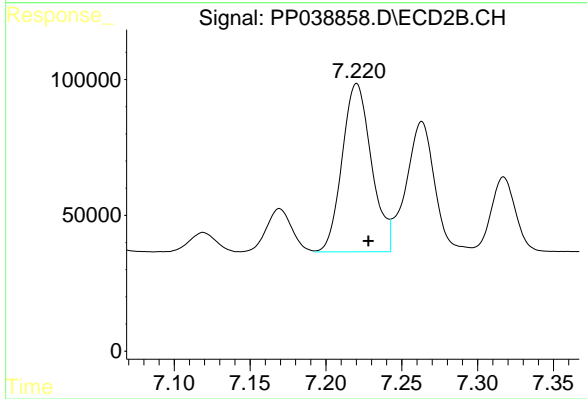
#29 AR-1254-4

R.T.: 6.794 min  
 Delta R.T.: -0.006 min  
 Response: 67890  
 Conc: 58.09 ng/ml



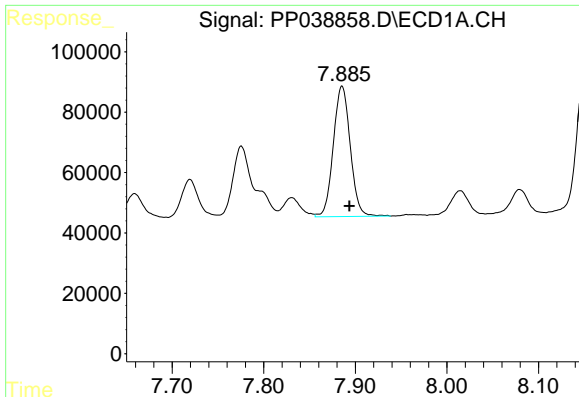
#30 AR-1254-5

R.T.: 8.444 min  
 Delta R.T.: -0.007 min  
 Response: 751384  
 Conc: 607.52 ng/ml



#30 AR-1254-5

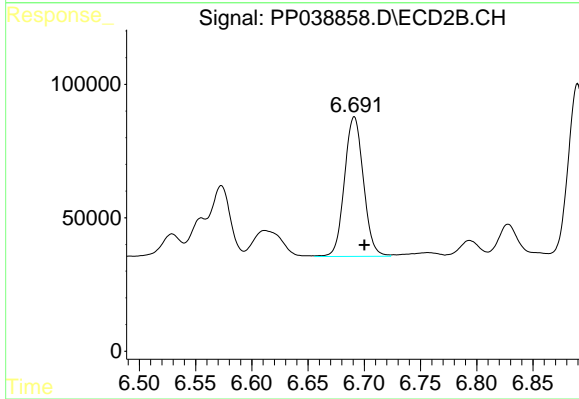
R.T.: 7.220 min  
 Delta R.T.: -0.008 min  
 Response: 834052  
 Conc: 516.02 ng/ml



#31 AR-1260-1

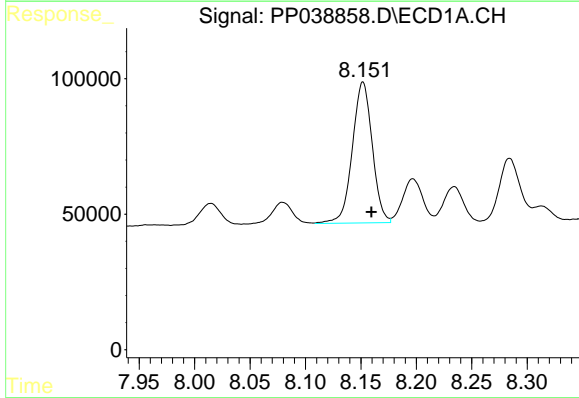
R.T.: 7.886 min  
 Delta R.T.: -0.008 min  
 Response: 555886  
 Conc: 464.48 ng/ml

Instrument :  
 ECD\_P  
 ClientSampleId :  
 AR1660CCC500



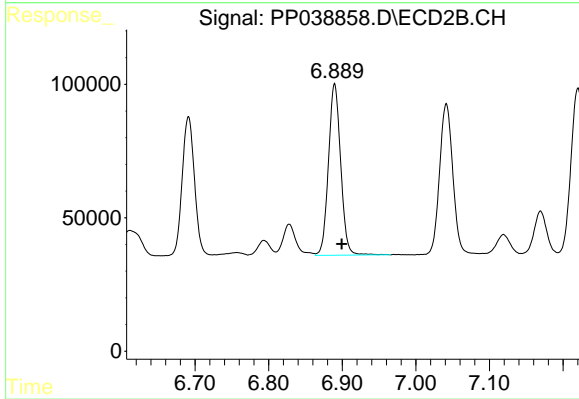
#31 AR-1260-1

R.T.: 6.691 min  
 Delta R.T.: -0.009 min  
 Response: 613801  
 Conc: 524.53 ng/ml



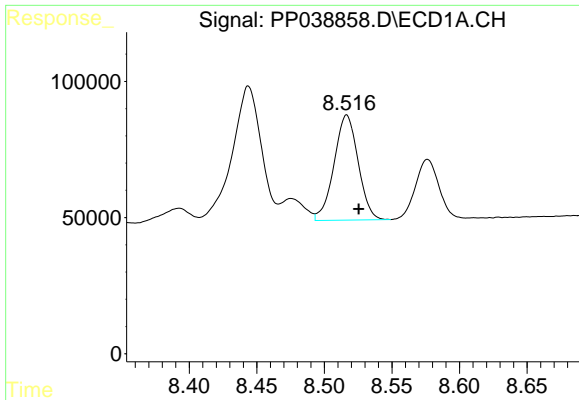
#32 AR-1260-2

R.T.: 8.152 min  
 Delta R.T.: -0.008 min  
 Response: 649755  
 Conc: 442.86 ng/ml



#32 AR-1260-2

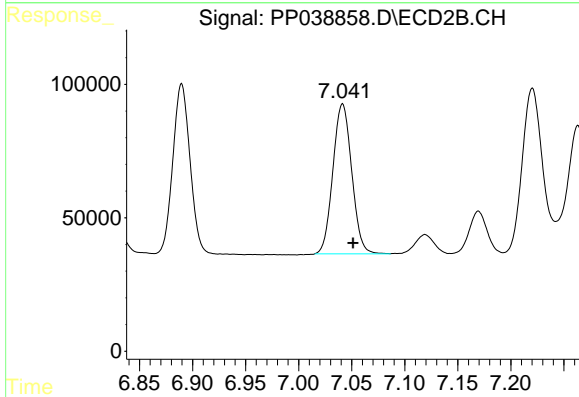
R.T.: 6.890 min  
 Delta R.T.: -0.010 min  
 Response: 740656  
 Conc: 520.32 ng/ml



#33 AR-1260-3

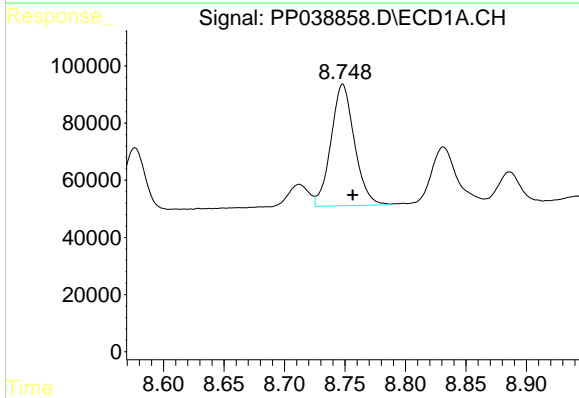
R.T.: 8.517 min  
 Delta R.T.: -0.009 min  
 Response: 479540  
 Conc: 499.78 ng/ml

Instrument :  
 ECD\_P  
 ClientSampleId :  
 AR1660CCC500



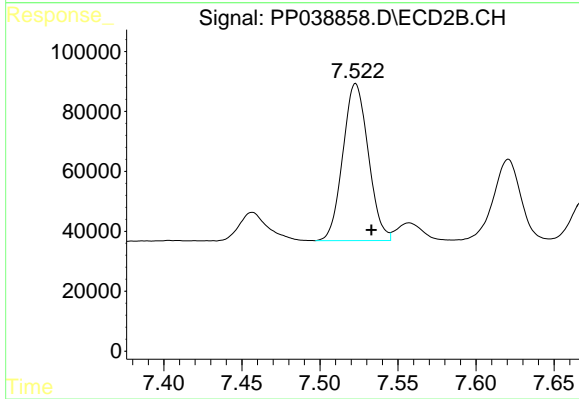
#33 AR-1260-3

R.T.: 7.041 min  
 Delta R.T.: -0.010 min  
 Response: 695087  
 Conc: 483.32 ng/ml



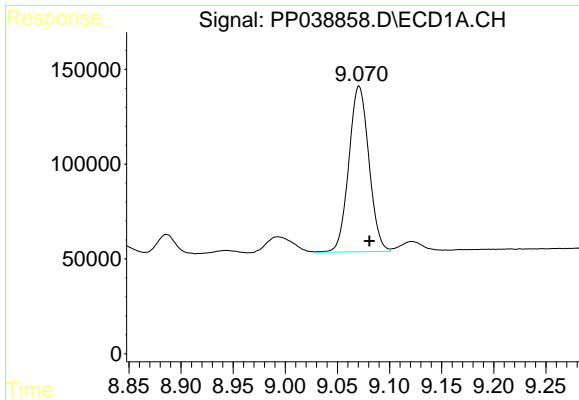
#34 AR-1260-4

R.T.: 8.748 min  
 Delta R.T.: -0.008 min  
 Response: 573621  
 Conc: 504.44 ng/ml



#34 AR-1260-4

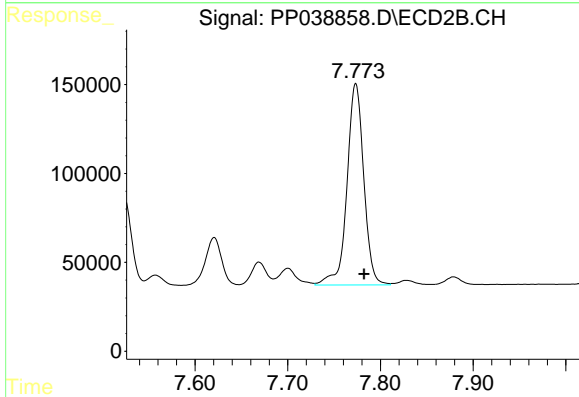
R.T.: 7.523 min  
 Delta R.T.: -0.010 min  
 Response: 594277  
 Conc: 529.16 ng/ml



#35 AR-1260-5

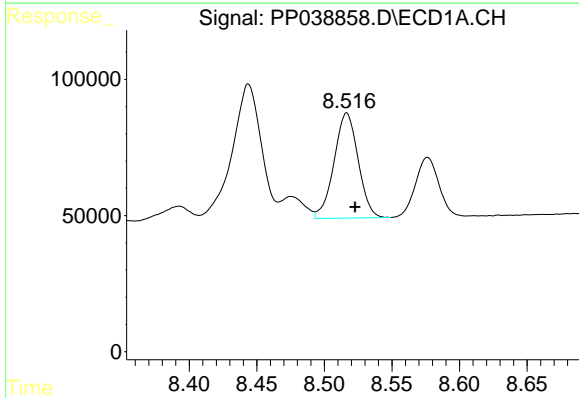
R.T.: 9.071 min  
 Delta R.T.: -0.010 min  
 Response: 1170781  
 Conc: 521.74 ng/ml

Instrument :  
 ECD\_P  
 ClientSampled :  
 AR1660CCC500



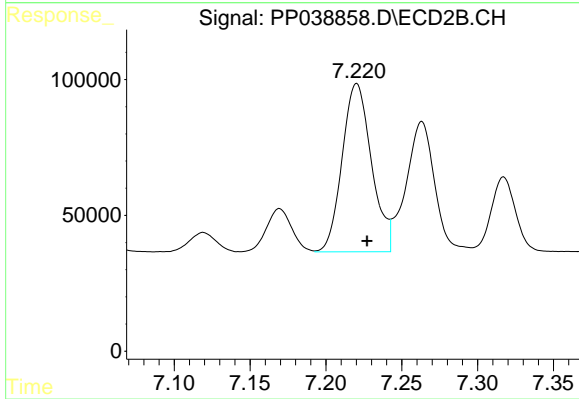
#35 AR-1260-5

R.T.: 7.773 min  
 Delta R.T.: -0.009 min  
 Response: 1427369  
 Conc: 526.96 ng/ml



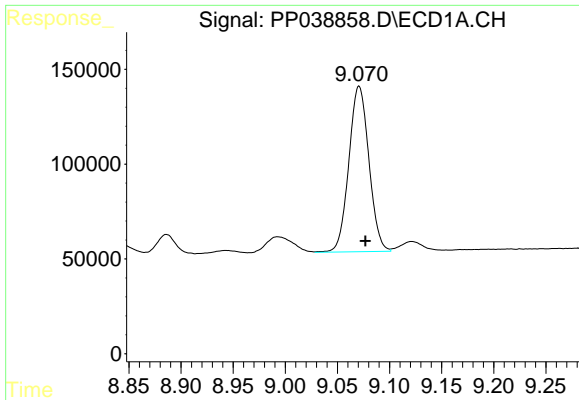
#36 AR-1262-1

R.T.: 8.517 min  
 Delta R.T.: -0.006 min  
 Response: 479540  
 Conc: 322.59 ng/ml



#36 AR-1262-1

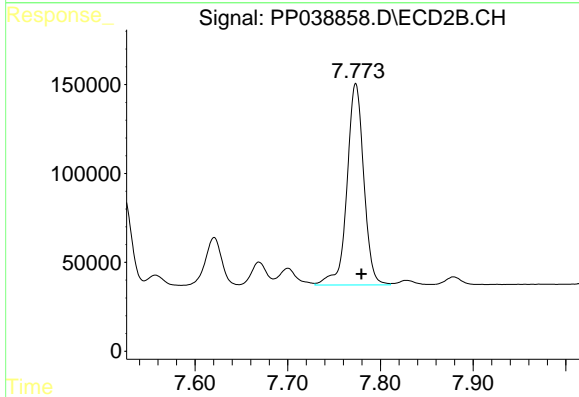
R.T.: 7.220 min  
 Delta R.T.: -0.007 min  
 Response: 834052  
 Conc: 922.75 ng/ml



#37 AR-1262-2

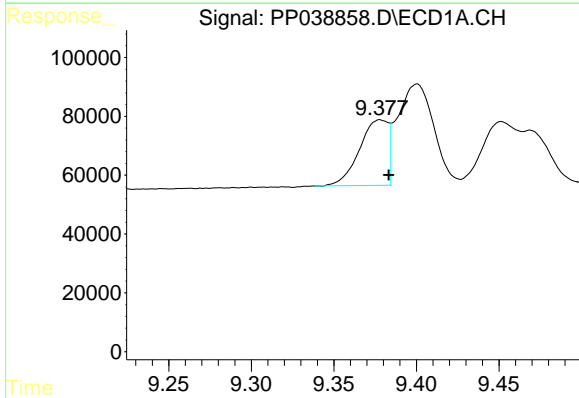
R.T.: 9.071 min  
 Delta R.T.: -0.006 min  
 Response: 1170781  
 Conc: 439.74 ng/ml

Instrument :  
 ECD\_P  
 ClientSampleId :  
 AR1660CCC500



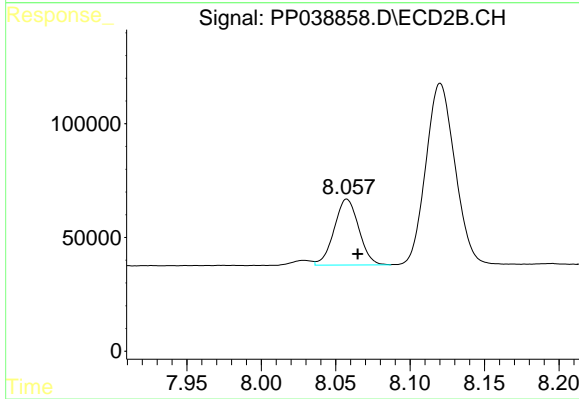
#37 AR-1262-2

R.T.: 7.773 min  
 Delta R.T.: -0.006 min  
 Response: 1427369  
 Conc: 461.99 ng/ml



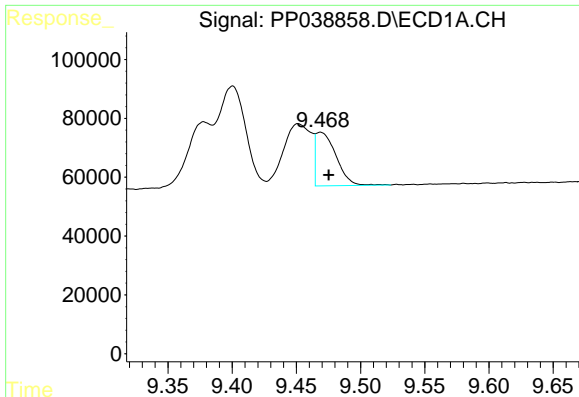
#38 AR-1262-3

R.T.: 9.378 min  
 Delta R.T.: -0.005 min  
 Response: 270207  
 Conc: 226.78 ng/ml



#38 AR-1262-3

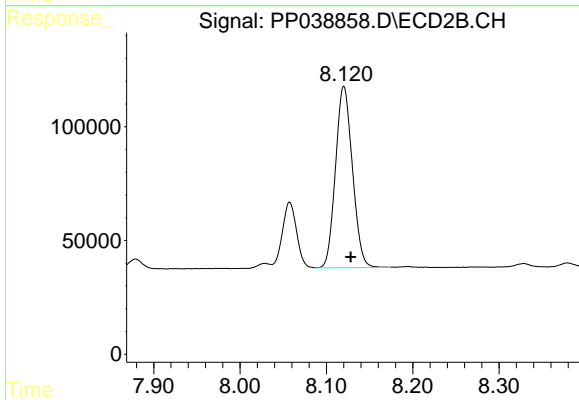
R.T.: 8.057 min  
 Delta R.T.: -0.007 min  
 Response: 333804  
 Conc: 265.69 ng/ml



#39 AR-1262-4

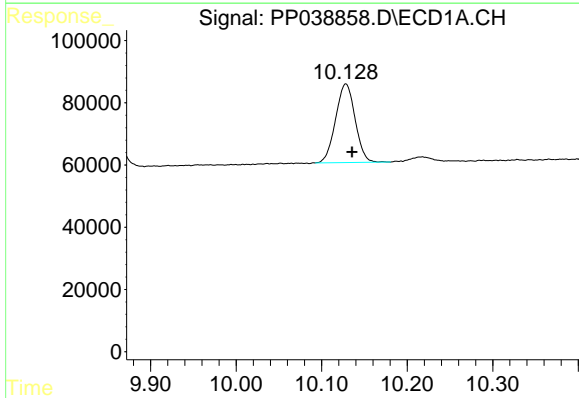
R.T.: 9.469 min  
 Delta R.T.: -0.007 min  
 Response: 200886  
 Conc: 249.35 ng/ml

Instrument :  
 ECD\_P  
 ClientSampled :  
 AR1660CCC500



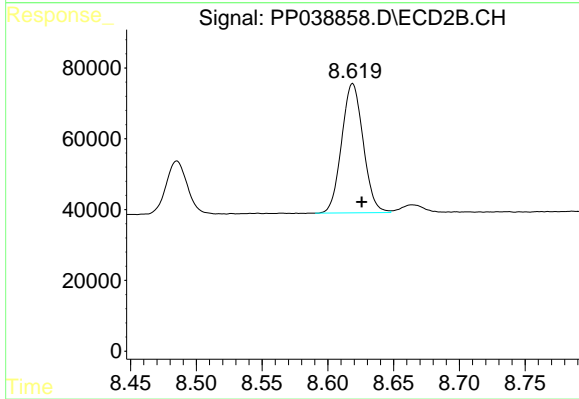
#39 AR-1262-4

R.T.: 8.120 min  
 Delta R.T.: -0.008 min  
 Response: 1082652  
 Conc: 458.09 ng/ml



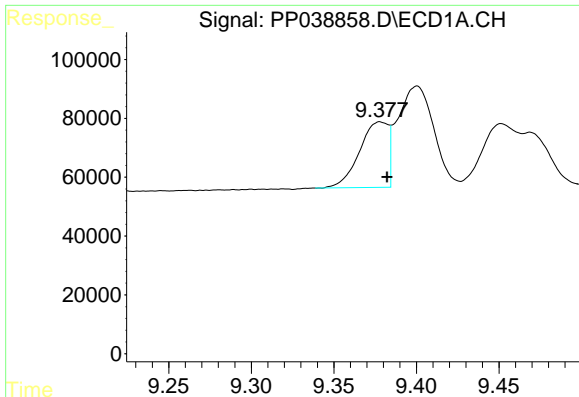
#40 AR-1262-5

R.T.: 10.128 min  
 Delta R.T.: -0.007 min  
 Response: 400328  
 Conc: 375.57 ng/ml



#40 AR-1262-5

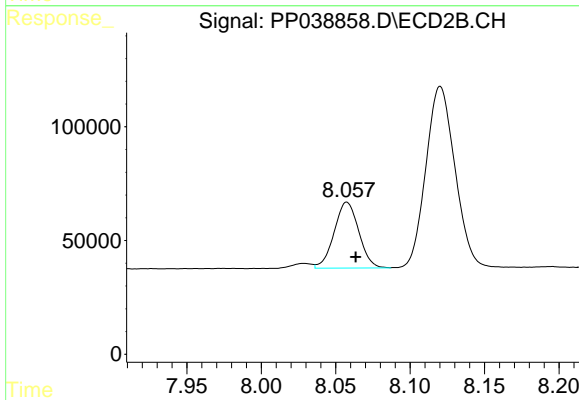
R.T.: 8.619 min  
 Delta R.T.: -0.007 min  
 Response: 415846  
 Conc: 365.74 ng/ml



#41 AR-1268-1

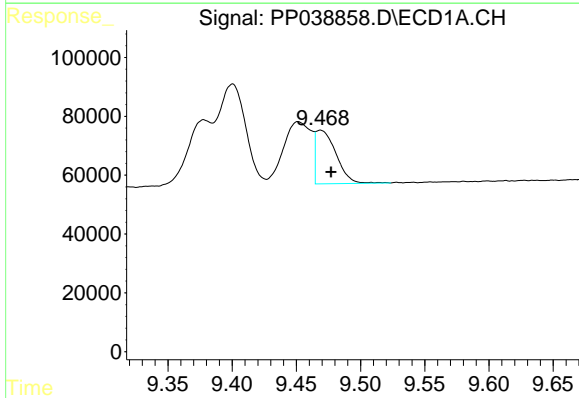
R.T.: 9.378 min  
 Delta R.T.: -0.004 min  
 Response: 270207  
 Conc: 84.24 ng/ml

Instrument :  
 ECD\_P  
 ClientSampleId :  
 AR1660CCC500



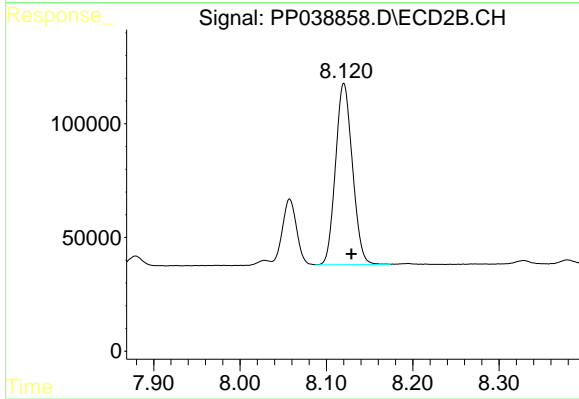
#41 AR-1268-1

R.T.: 8.057 min  
 Delta R.T.: -0.006 min  
 Response: 333804  
 Conc: 91.41 ng/ml



#42 AR-1268-2

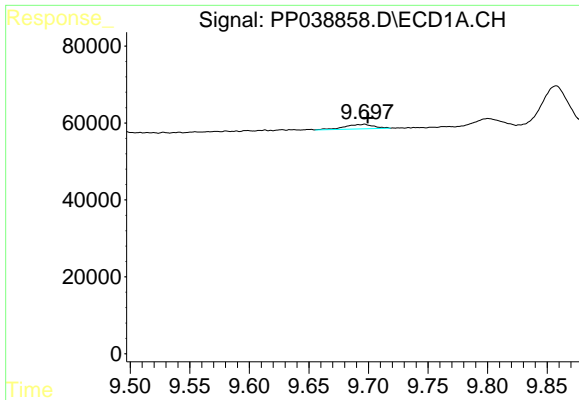
R.T.: 9.469 min  
 Delta R.T.: -0.008 min  
 Response: 200886  
 Conc: 65.20 ng/ml



#42 AR-1268-2

R.T.: 8.120 min  
 Delta R.T.: -0.009 min  
 Response: 1082652  
 Conc: 313.83 ng/ml

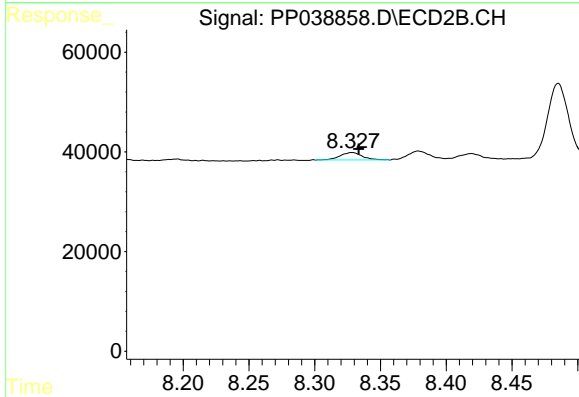




#43 AR-1268-3

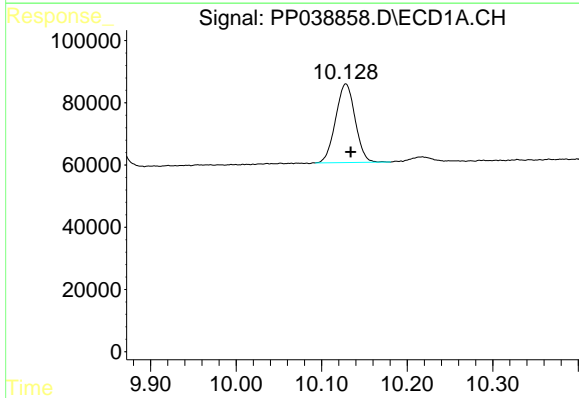
R.T.: 9.697 min  
 Delta R.T.: -0.003 min  
 Response: 19704  
 Conc: 7.41 ng/ml

Instrument :  
 ECD\_P  
 ClientSampleId :  
 AR1660CCC500



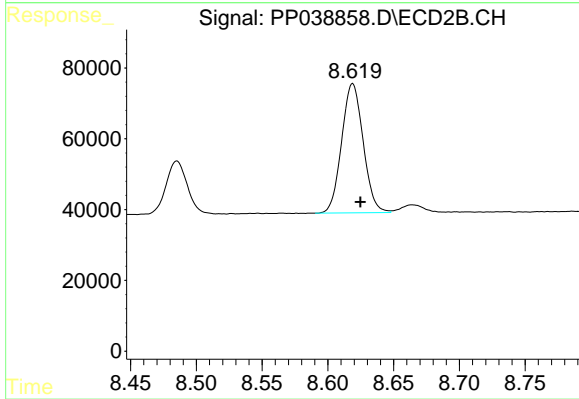
#43 AR-1268-3

R.T.: 8.328 min  
 Delta R.T.: -0.005 min  
 Response: 17354  
 Conc: 5.96 ng/ml



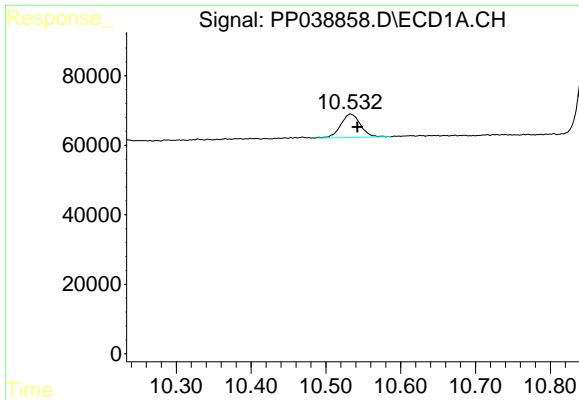
#44 AR-1268-4

R.T.: 10.128 min  
 Delta R.T.: -0.006 min  
 Response: 400328  
 Conc: 328.61 ng/ml



#44 AR-1268-4

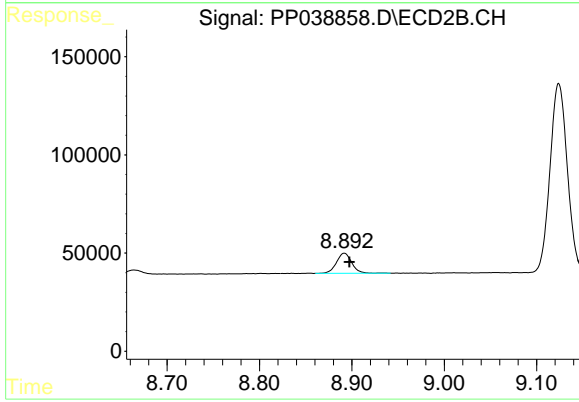
R.T.: 8.619 min  
 Delta R.T.: -0.006 min  
 Response: 415846  
 Conc: 328.80 ng/ml



#45 AR-1268-5

R.T.: 10.533 min  
Delta R.T.: -0.009 min  
Response: 123304  
Conc: 12.94 ng/ml

Instrument :  
ECD\_P  
ClientSampleId :  
AR1660CCC500



#45 AR-1268-5

R.T.: 8.892 min  
Delta R.T.: -0.006 min  
Response: 117888  
Conc: 12.13 ng/ml