

Data Path : Z:\pestpcbsrv\HPCHEM1\ECD_P\Data\PP082421\
 Data File : PP038862.D
 Signal(s) : Signal #1: ECD1A.CH Signal #2: ECD2B.CH
 Acq On : 24 Aug 2021 20:59
 Operator : AJ\MA
 Sample : AR1268CCC500
 Misc :
 ALS Vial : 7 Sample Multiplier: 1

Instrument :
 ECD_P
 ClientSampleId :
 AR1268CCC500

Integration File signal 1: autoint1.e
 Integration File signal 2: autoint2.e
 Quant Time: Aug 25 02:25:41 2021
 Quant Method : Z:\pestpcbsrv\HPCHEM1\ECD_P\methods\PP081721.M
 Quant Title : GC EXTRACTABLES
 QLast Update : Wed Aug 18 04:51:26 2021
 Response via : Initial Calibration
 Integrator: ChemStation 6890 Scale Mode: Small noise peaks clipped

Volume Inj. : 2 µl
 Signal #1 Phase : ZB-MR2 Signal #2 Phase: ZB-MR2
 Signal #1 Info : 30Mx0.32mmx 0.50µ Signal #2 Info : 30M x 0.32mm x 0.25µm

Compound	RT#1	RT#2	Resp#1	Resp#2	ng/ml	ng/ml
System Monitoring Compounds						
1) SA Tetrachlo...	4.881	3.867	2008593	1315920	49.770	54.912
2) SA Decachlor...	10.864	9.124	2325210	2201593	94.507	90.393
Target Compounds						
9) L2 AR-1221-2	5.232	4.215	27136	17126	76.600	80.052
20) L4 AR-1242-5	7.176	6.003f	29354	21760	41.057	35.151
24) L5 AR-1248-4	7.138	0.000	33808	0	27.378	N.D. #
25) L5 AR-1248-5	7.176	6.003f	29354	21760	24.008	24.101
26) L6 AR-1254-1	7.114	6.003f	70757	21760	62.012	16.569 #
27) L6 AR-1254-2	7.343	0.000	8895	0	5.151	N.D. #
28) L6 AR-1254-3	7.741f	6.555	38678	4467	21.546	2.401 #
29) L6 AR-1254-4	8.015	0.000	38956	0	30.191	N.D. #
30) L6 AR-1254-5	8.424f	0.000	6824	0	5.517	N.D. #
32) L7 AR-1260-2	8.151	0.000	5685	0	3.875	N.D. #
33) L7 AR-1260-3	8.517	7.044	272906	35699	284.426	24.823 #
34) L7 AR-1260-4	8.764	7.520	362861	416042	319.099	370.455
35) L7 AR-1260-5	9.072	7.772	173757	176268	77.432	65.075
36) L8 AR-1262-1	8.517	0.000	272906	0	183.585	N.D. #
37) L8 AR-1262-2	9.072	7.772	173757	176268	65.263	57.052
38) L8 AR-1262-3	9.377	8.057	1585185	1802186	1330.430	1434.419
39) L8 AR-1262-4	9.472	8.122	1539460	1706181	1910.858	721.924 #
40) L8 AR-1262-5	10.130	8.619	612235	616833	574.371	542.507
41) L9 AR-1268-1	9.377	8.057	1585185	1802186	494.200	493.533
42) L9 AR-1268-2	9.472	8.122	1539460	1706181	499.683	494.578
43) L9 AR-1268-3	9.694	8.326	1344508	1439045	505.730	494.293
44) L9 AR-1268-4	10.130	8.619	612235	616833	502.551	487.723
45) L9 AR-1268-5	10.536	8.891	4801166	4738463	503.926	487.569

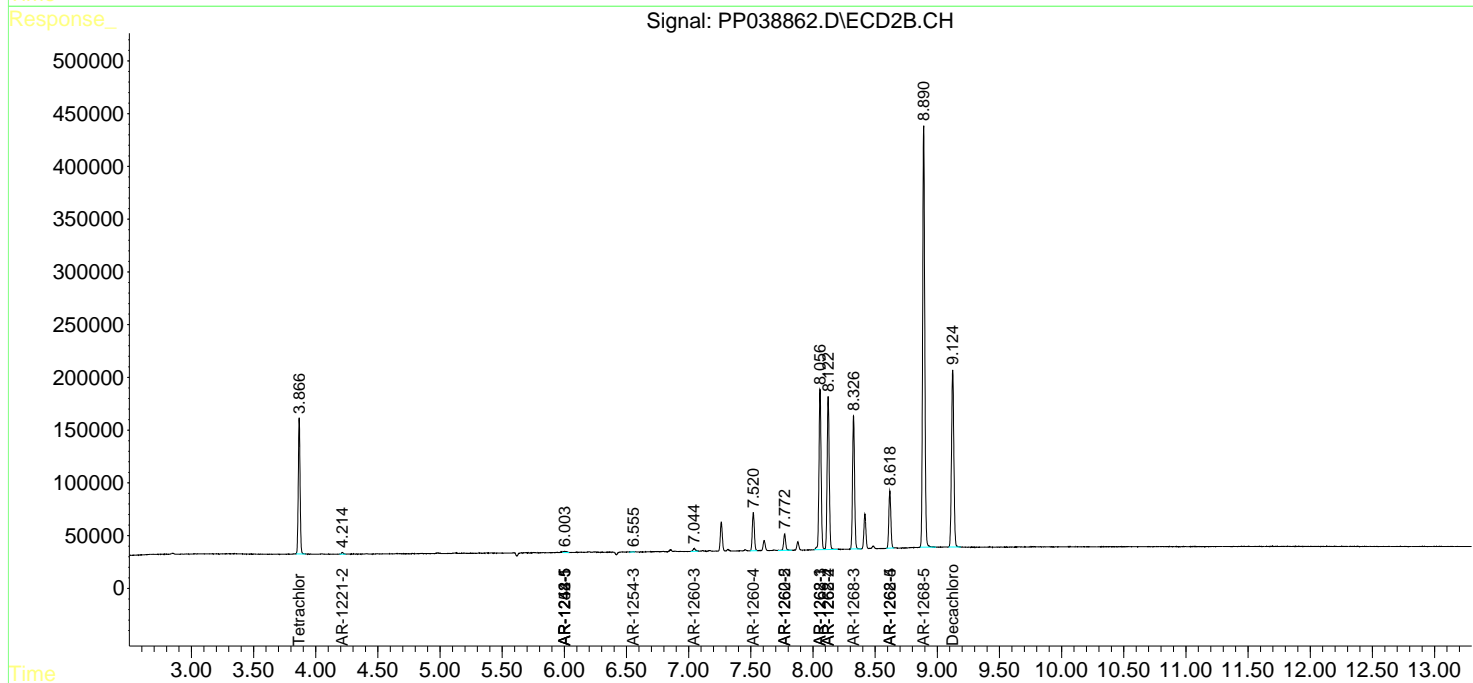
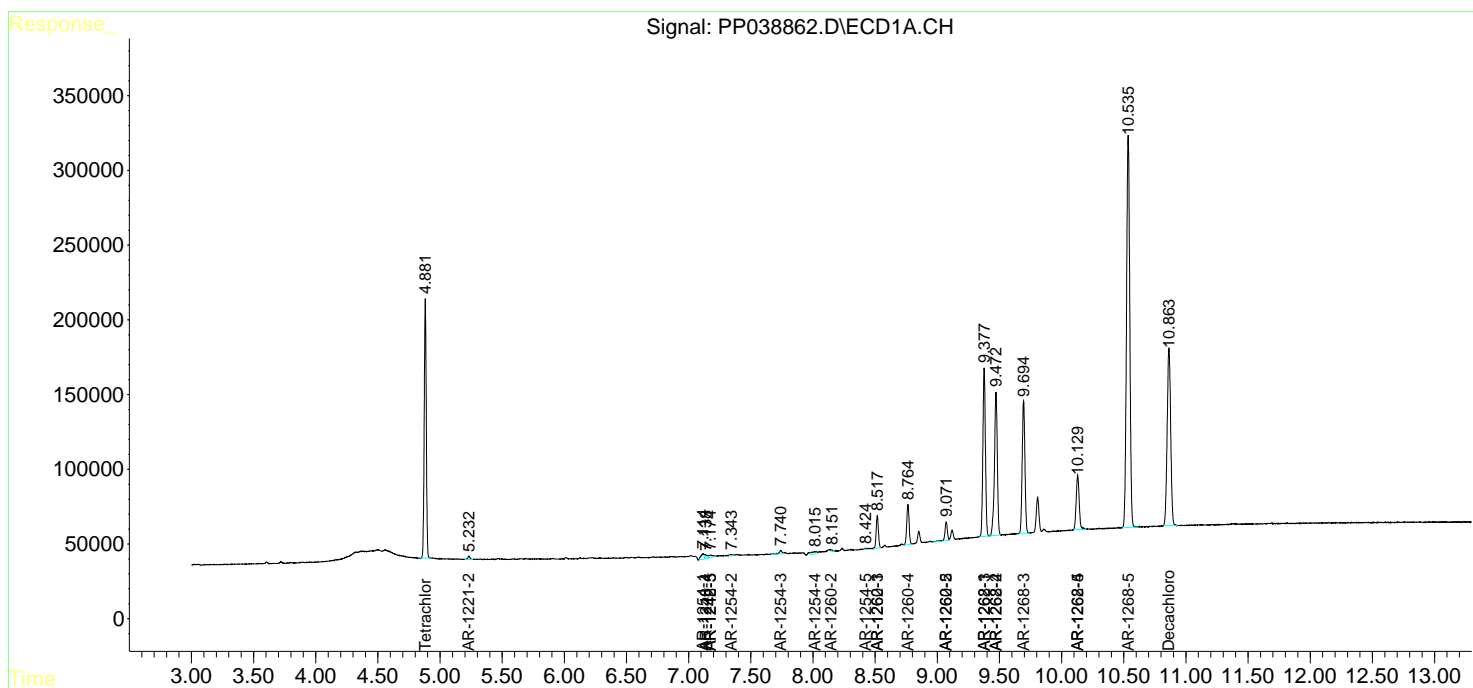
(f)=RT Delta > 1/2 Window (#)=Amounts differ by > 25% (m)=manual int.

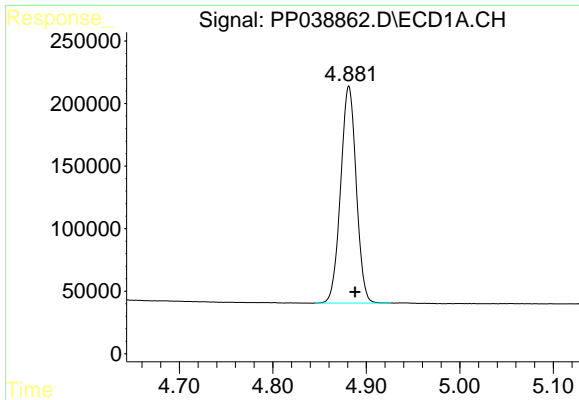
Data Path : Z:\pestpcbsrv\HPCHEM1\ECD_P\Data\PP082421\
 Data File : PP038862.D
 Signal(s) : Signal #1: ECD1A.CH Signal #2: ECD2B.CH
 Acq On : 24 Aug 2021 20:59
 Operator : AJ\MA
 Sample : AR1268CCC500
 Misc :
 ALS Vial : 7 Sample Multiplier: 1

Instrument :
 ECD_P
 ClientSampled :
 AR1268CCC500

Integration File signal 1: autoint1.e
 Integration File signal 2: autoint2.e
 Quant Time: Aug 25 02:25:41 2021
 Quant Method : Z:\pestpcbsrv\HPCHEM1\ECD_P\methods\PP081721.M
 Quant Title : GC EXTRACTABLES
 QLast Update : Wed Aug 18 04:51:26 2021
 Response via : Initial Calibration
 Integrator: ChemStation 6890 Scale Mode: Small noise peaks clipped

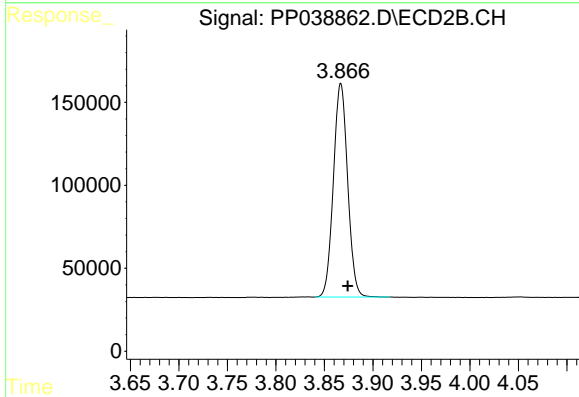
Volume Inj. : 2 µl
 Signal #1 Phase : ZB-MR1 Signal #2 Phase: ZB-MR2
 Signal #1 Info : 30Mx0.32mmx 0.50µ Signal #2 Info : 30M x 0.32mm x 0.25µm



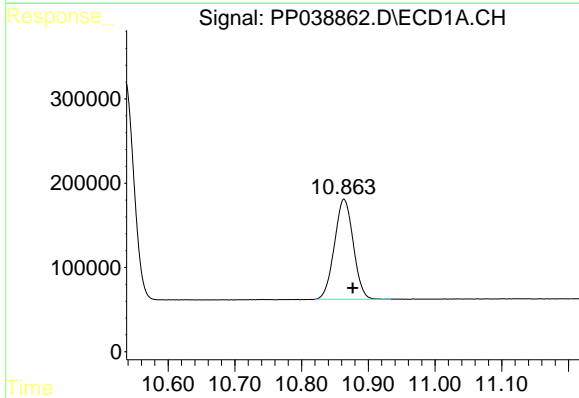


#1 Tetrachloro-m-xylene
 R.T.: 4.881 min
 Delta R.T.: -0.007 min
 Response: 2008593
 Conc: 49.77 ng/ml

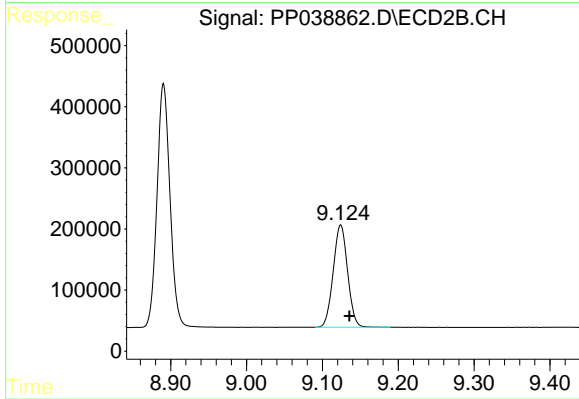
Instrument :
 ECD_P
 ClientSampleId :
 AR1268CCC500



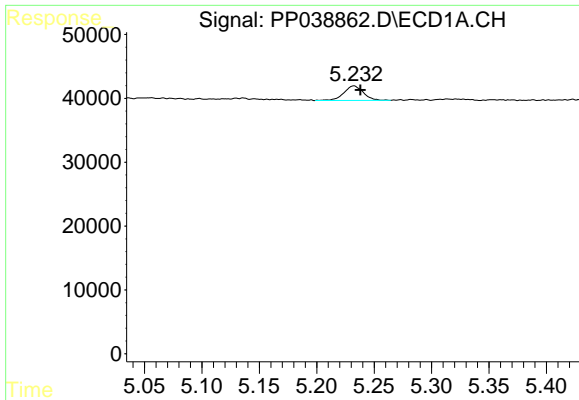
#1 Tetrachloro-m-xylene
 R.T.: 3.867 min
 Delta R.T.: -0.007 min
 Response: 1315920
 Conc: 54.91 ng/ml



#2 Decachlorobiphenyl
 R.T.: 10.864 min
 Delta R.T.: -0.013 min
 Response: 2325210
 Conc: 94.51 ng/ml

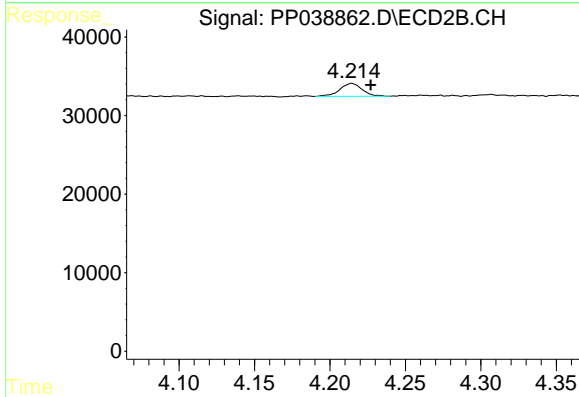


#2 Decachlorobiphenyl
 R.T.: 9.124 min
 Delta R.T.: -0.011 min
 Response: 2201593
 Conc: 90.39 ng/ml

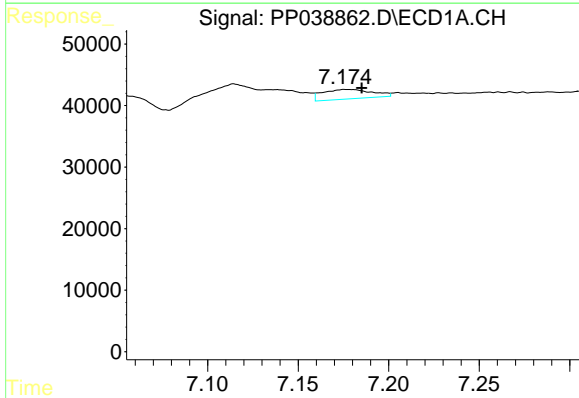


#9 AR-1221-2
 R.T.: 5.232 min
 Delta R.T.: -0.006 min
 Response: 27136
 Conc: 76.60 ng/ml

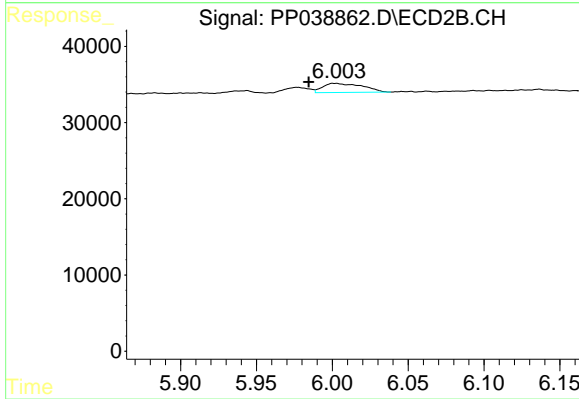
Instrument :
 ECD_P
ClientSampleId :
 AR1268CCC500



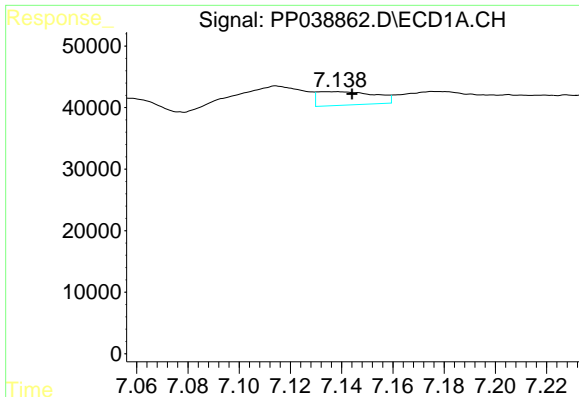
#9 AR-1221-2
 R.T.: 4.215 min
 Delta R.T.: -0.012 min
 Response: 17126
 Conc: 80.05 ng/ml



#20 AR-1242-5
 R.T.: 7.176 min
 Delta R.T.: -0.009 min
 Response: 29354
 Conc: 41.06 ng/ml



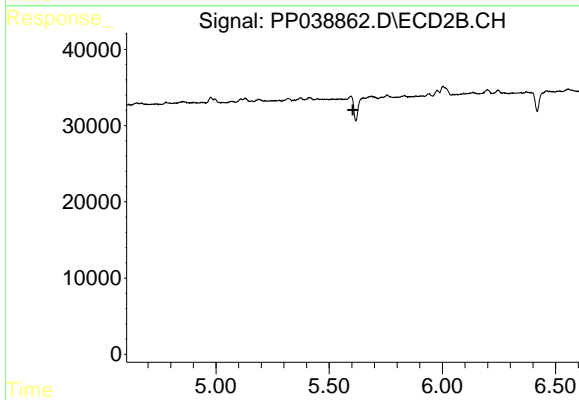
#20 AR-1242-5
 R.T.: 6.003 min
 Delta R.T.: 0.018 min
 Response: 21760
 Conc: 35.15 ng/ml



#24 AR-1248-4

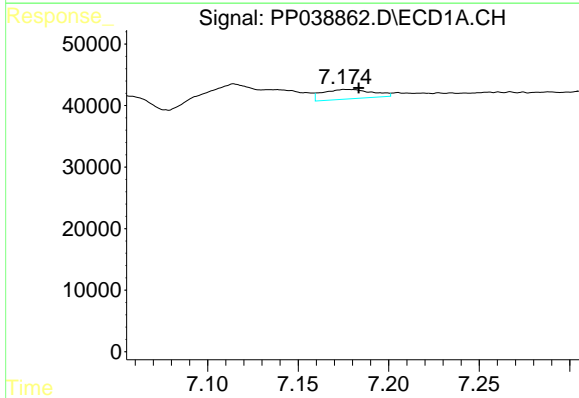
R.T.: 7.138 min
 Delta R.T.: -0.006 min
 Response: 33808
 Conc: 27.38 ng/ml

Instrument :
 ECD_P
 ClientSampleId :
 AR1268CCC500



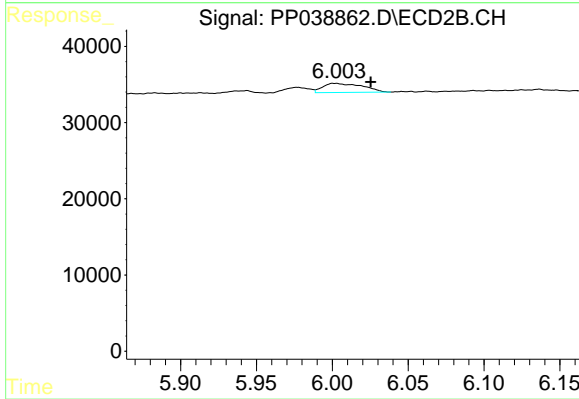
#24 AR-1248-4

R.T.: 0.000 min
 Exp R.T. : 5.605 min
 Response: 0
 Conc: N.D.



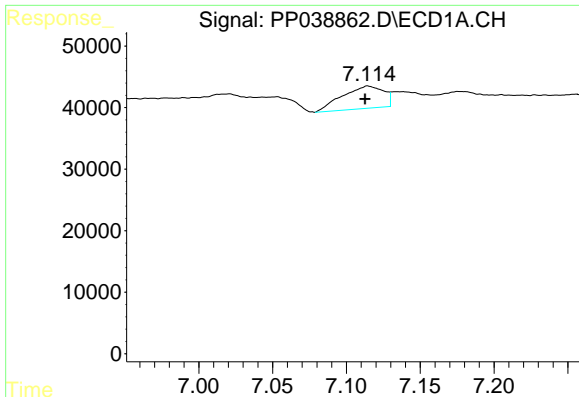
#25 AR-1248-5

R.T.: 7.176 min
 Delta R.T.: -0.008 min
 Response: 29354
 Conc: 24.01 ng/ml



#25 AR-1248-5

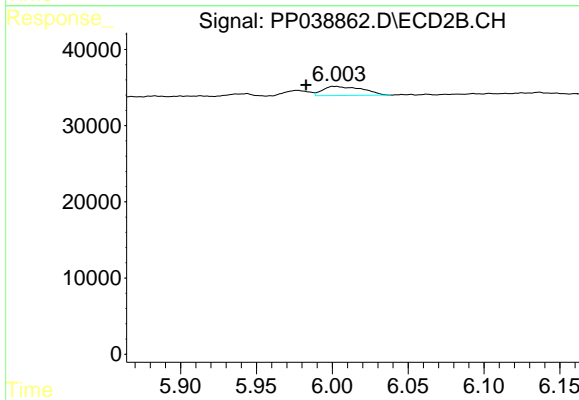
R.T.: 6.003 min
 Delta R.T.: -0.023 min
 Response: 21760
 Conc: 24.10 ng/ml



#26 AR-1254-1

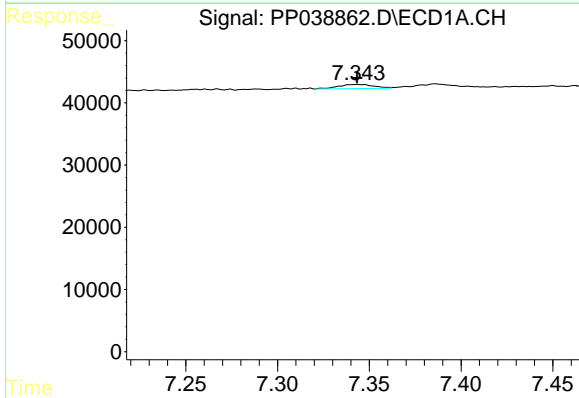
R.T.: 7.114 min
 Delta R.T.: 0.002 min
 Response: 70757
 Conc: 62.01 ng/ml

Instrument :
 ECD_P
 ClientSampleId :
 AR1268CCC500



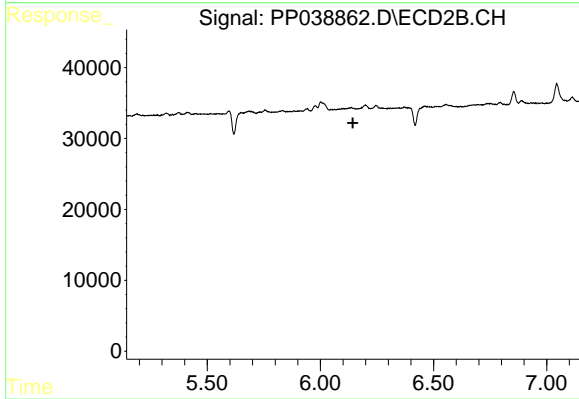
#26 AR-1254-1

R.T.: 6.003 min
 Delta R.T.: 0.020 min
 Response: 21760
 Conc: 16.57 ng/ml



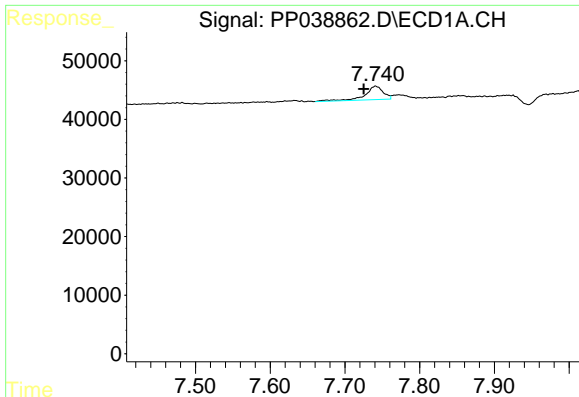
#27 AR-1254-2

R.T.: 7.343 min
 Delta R.T.: 0.000 min
 Response: 8895
 Conc: 5.15 ng/ml



#27 AR-1254-2

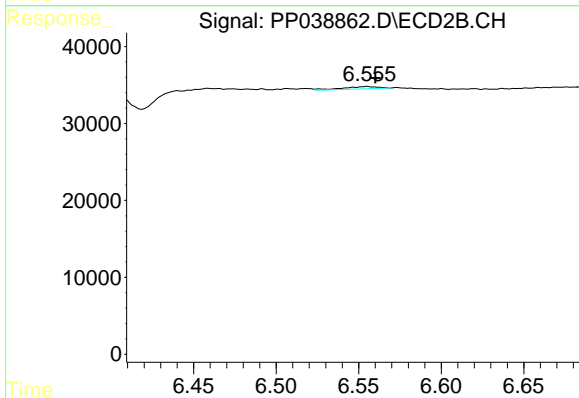
R.T.: 0.000 min
 Exp R.T. : 6.144 min
 Response: 0
 Conc: N.D.



#28 AR-1254-3

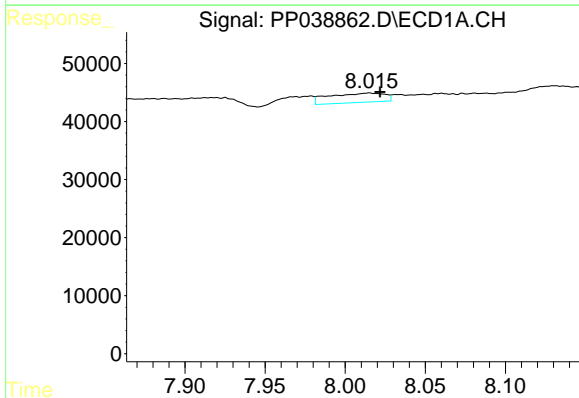
R.T.: 7.741 min
 Delta R.T.: 0.016 min
 Response: 38678
 Conc: 21.55 ng/ml

Instrument :
 ECD_P
 ClientSampleId :
 AR1268CCC500



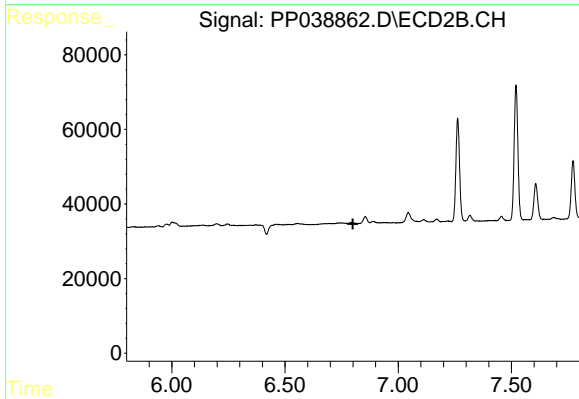
#28 AR-1254-3

R.T.: 6.555 min
 Delta R.T.: -0.005 min
 Response: 4467
 Conc: 2.40 ng/ml



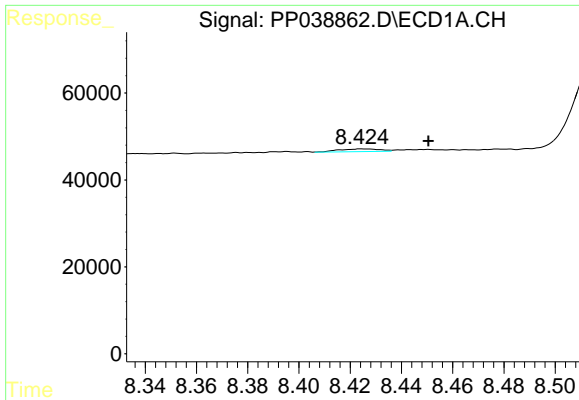
#29 AR-1254-4

R.T.: 8.015 min
 Delta R.T.: -0.007 min
 Response: 38956
 Conc: 30.19 ng/ml



#29 AR-1254-4

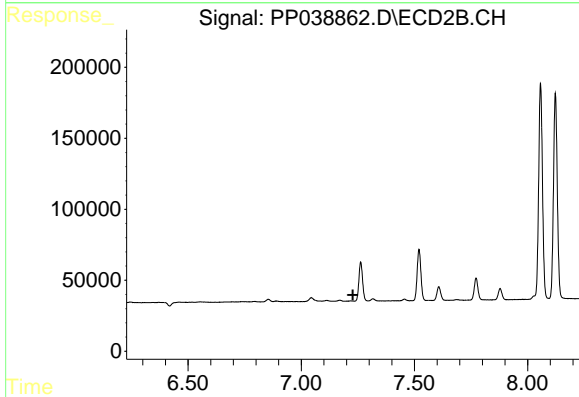
R.T.: 0.000 min
 Exp R.T. : 6.800 min
 Response: 0
 Conc: N.D.



#30 AR-1254-5

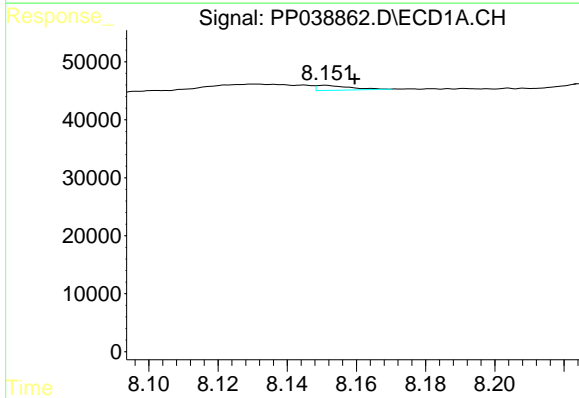
R.T.: 8.424 min
 Delta R.T.: -0.026 min
 Response: 6824
 Conc: 5.52 ng/ml

Instrument :
 ECD_P
ClientSampled :
 AR1268CCC500



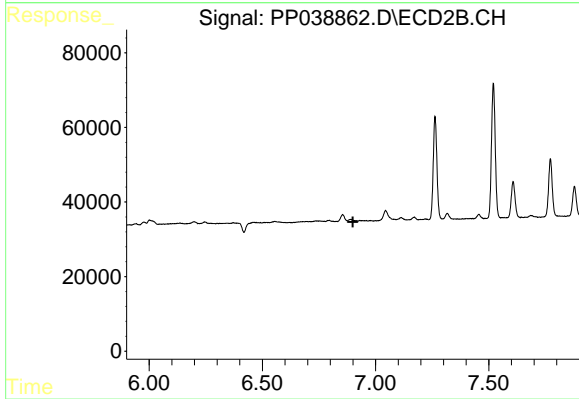
#30 AR-1254-5

R.T.: 0.000 min
 Exp R.T. : 7.228 min
 Response: 0
 Conc: N.D.



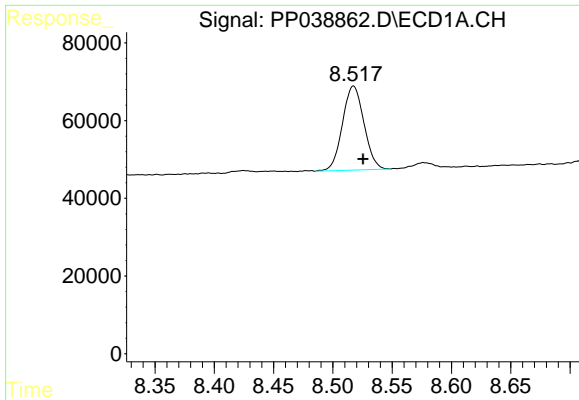
#32 AR-1260-2

R.T.: 8.151 min
 Delta R.T.: -0.008 min
 Response: 5685
 Conc: 3.87 ng/ml



#32 AR-1260-2

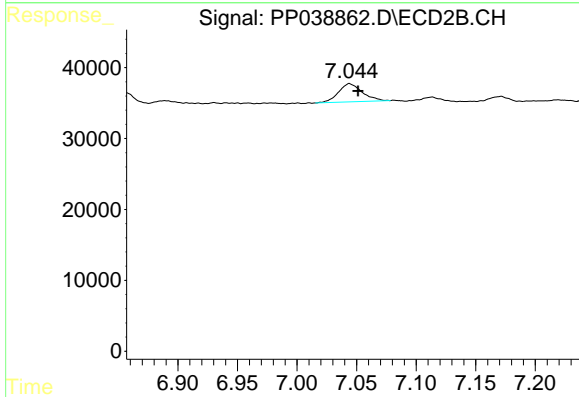
R.T.: 0.000 min
 Exp R.T. : 6.899 min
 Response: 0
 Conc: N.D.



#33 AR-1260-3

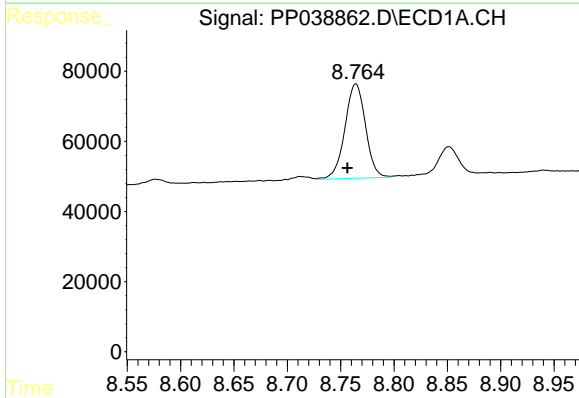
R.T.: 8.517 min
 Delta R.T.: -0.008 min
 Response: 272906
 Conc: 284.43 ng/ml

Instrument :
 ECD_P
 ClientSampleId :
 AR1268CCC500



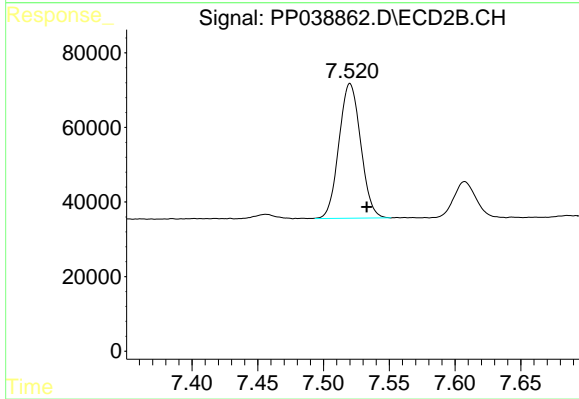
#33 AR-1260-3

R.T.: 7.044 min
 Delta R.T.: -0.007 min
 Response: 35699
 Conc: 24.82 ng/ml



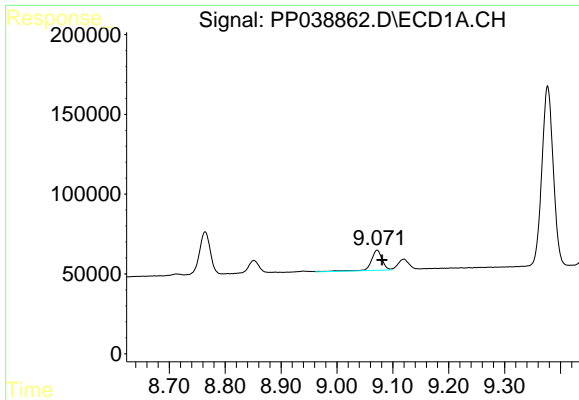
#34 AR-1260-4

R.T.: 8.764 min
 Delta R.T.: 0.008 min
 Response: 362861
 Conc: 319.10 ng/ml



#34 AR-1260-4

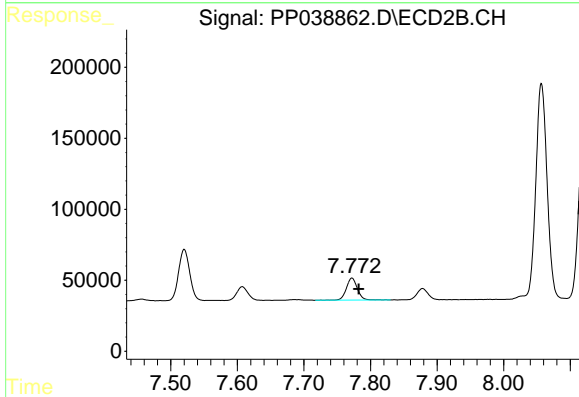
R.T.: 7.520 min
 Delta R.T.: -0.013 min
 Response: 416042
 Conc: 370.46 ng/ml



#35 AR-1260-5

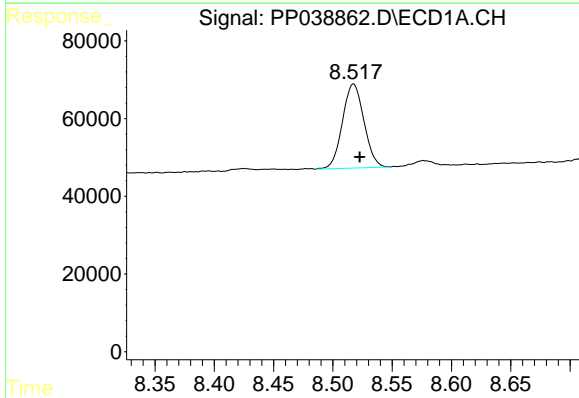
R.T.: 9.072 min
 Delta R.T.: -0.009 min
 Response: 173757
 Conc: 77.43 ng/ml

Instrument :
 ECD_P
 ClientSampleId :
 AR1268CCC500



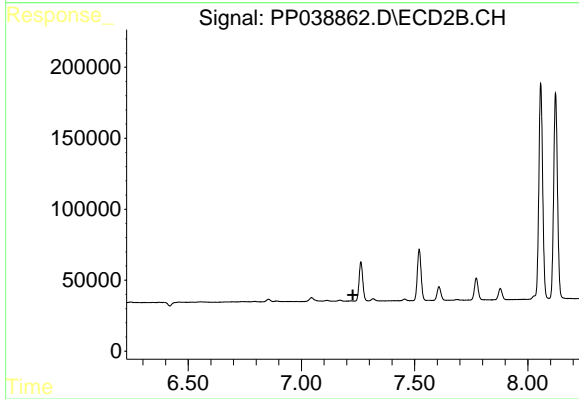
#35 AR-1260-5

R.T.: 7.772 min
 Delta R.T.: -0.010 min
 Response: 176268
 Conc: 65.08 ng/ml



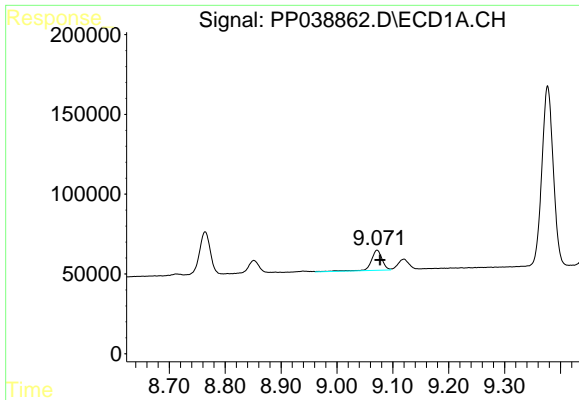
#36 AR-1262-1

R.T.: 8.517 min
 Delta R.T.: -0.005 min
 Response: 272906
 Conc: 183.58 ng/ml



#36 AR-1262-1

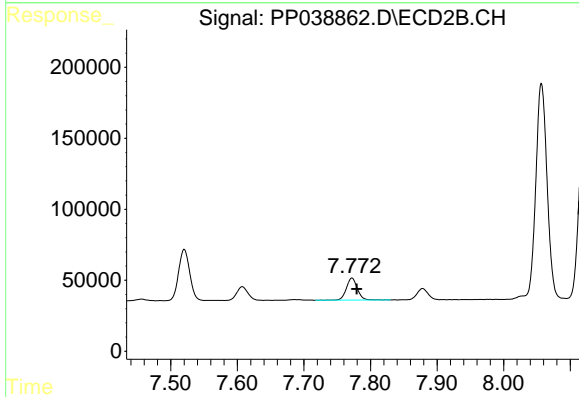
R.T.: 0.000 min
 Exp R.T. : 7.227 min
 Response: 0
 Conc: N.D.



#37 AR-1262-2

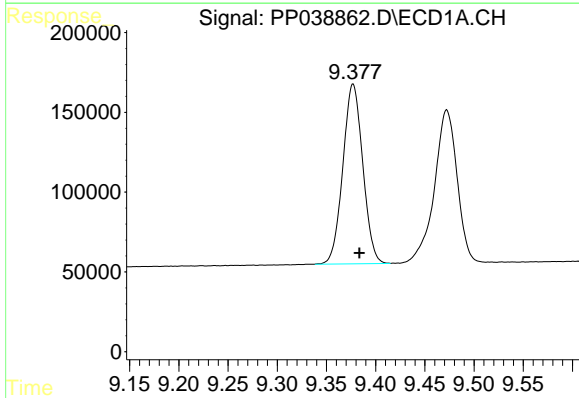
R.T.: 9.072 min
 Delta R.T.: -0.005 min
 Response: 173757
 Conc: 65.26 ng/ml

Instrument :
 ECD_P
 ClientSampleId :
 AR1268CCC500



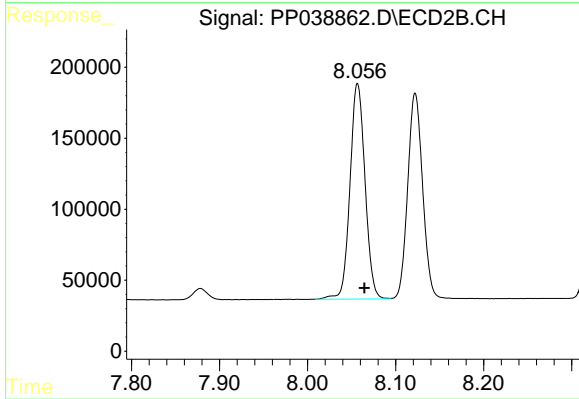
#37 AR-1262-2

R.T.: 7.772 min
 Delta R.T.: -0.007 min
 Response: 176268
 Conc: 57.05 ng/ml



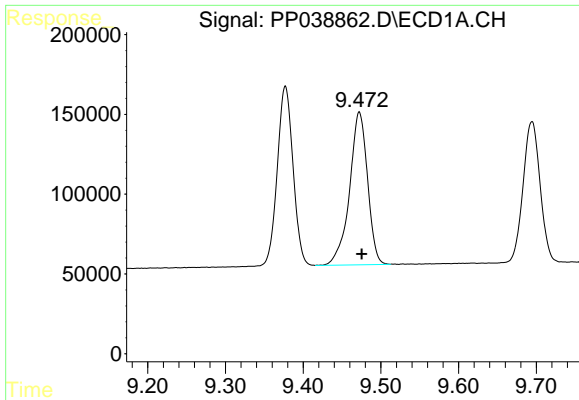
#38 AR-1262-3

R.T.: 9.377 min
 Delta R.T.: -0.006 min
 Response: 1585185
 Conc: 1330.43 ng/ml



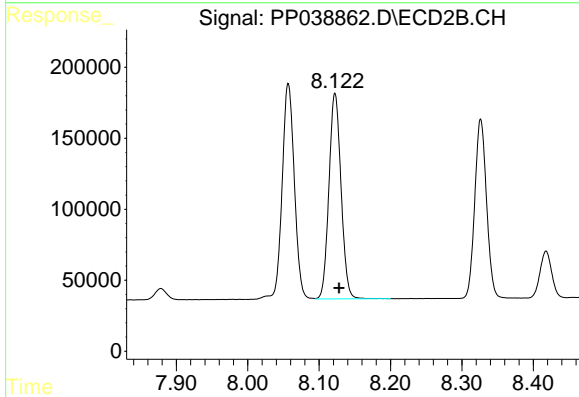
#38 AR-1262-3

R.T.: 8.057 min
 Delta R.T.: -0.008 min
 Response: 1802186
 Conc: 1434.42 ng/ml

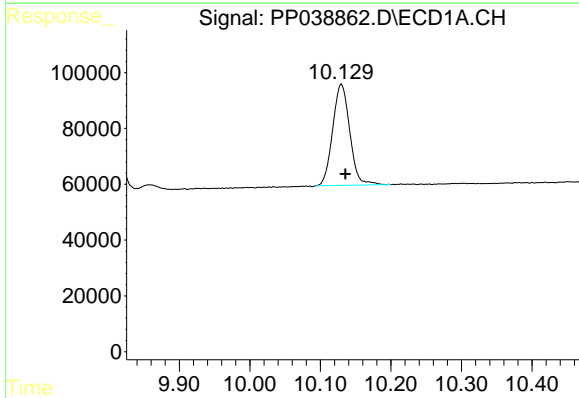


#39 AR-1262-4
 R.T.: 9.472 min
 Delta R.T.: -0.003 min
 Response: 1539460
 Conc: 1910.86 ng/ml

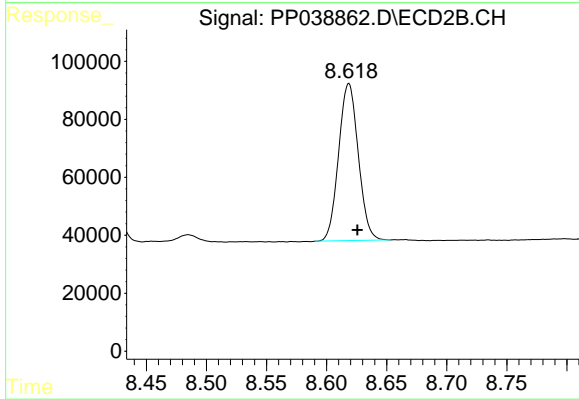
Instrument :
 ECD_P
ClientSampled :
 AR1268CCC500



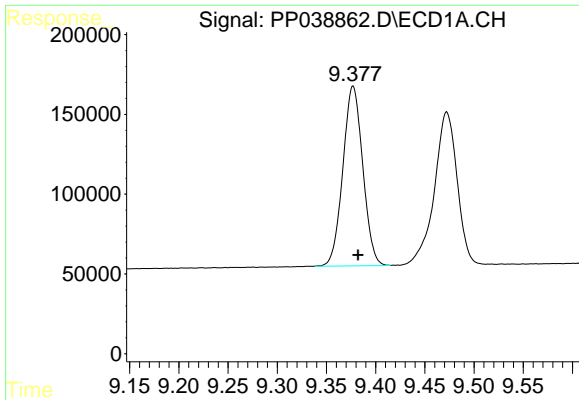
#39 AR-1262-4
 R.T.: 8.122 min
 Delta R.T.: -0.006 min
 Response: 1706181
 Conc: 721.92 ng/ml



#40 AR-1262-5
 R.T.: 10.130 min
 Delta R.T.: -0.006 min
 Response: 612235
 Conc: 574.37 ng/ml



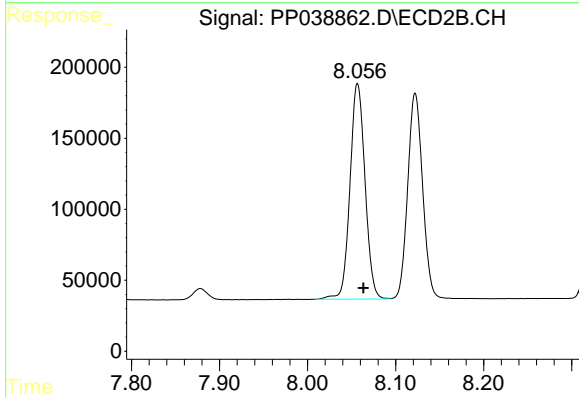
#40 AR-1262-5
 R.T.: 8.619 min
 Delta R.T.: -0.007 min
 Response: 616833
 Conc: 542.51 ng/ml



#41 AR-1268-1

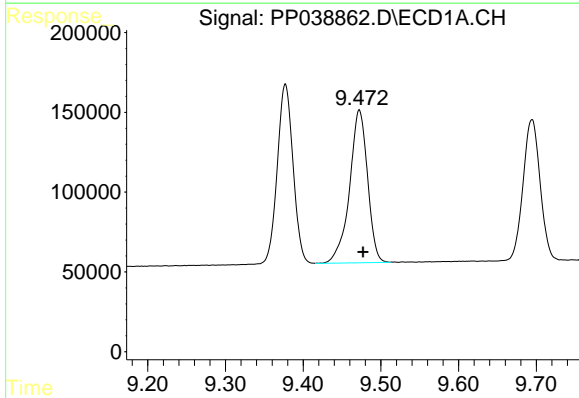
R.T.: 9.377 min
 Delta R.T.: -0.005 min
 Response: 1585185
 Conc: 494.20 ng/ml

Instrument :
 ECD_P
 ClientSampleId :
 AR1268CCC500



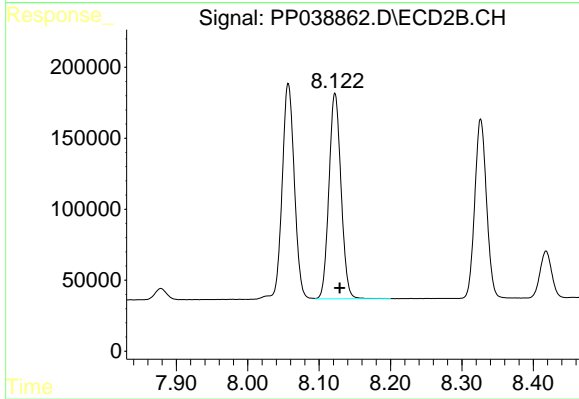
#41 AR-1268-1

R.T.: 8.057 min
 Delta R.T.: -0.007 min
 Response: 1802186
 Conc: 493.53 ng/ml



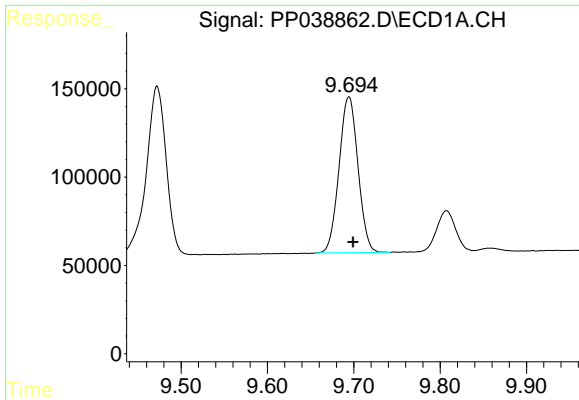
#42 AR-1268-2

R.T.: 9.472 min
 Delta R.T.: -0.005 min
 Response: 1539460
 Conc: 499.68 ng/ml



#42 AR-1268-2

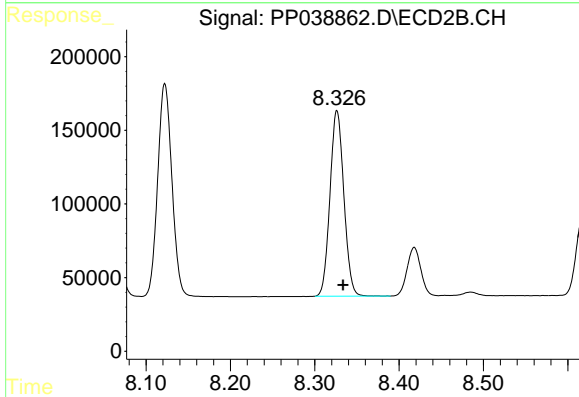
R.T.: 8.122 min
 Delta R.T.: -0.007 min
 Response: 1706181
 Conc: 494.58 ng/ml



#43 AR-1268-3

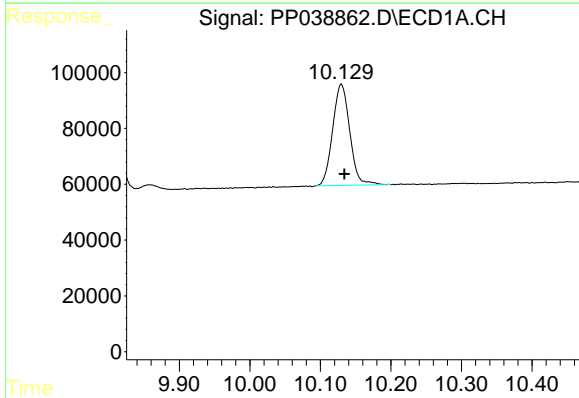
R.T.: 9.694 min
 Delta R.T.: -0.005 min
 Response: 1344508
 Conc: 505.73 ng/ml

Instrument :
 ECD_P
 ClientSampleId :
 AR1268CCC500



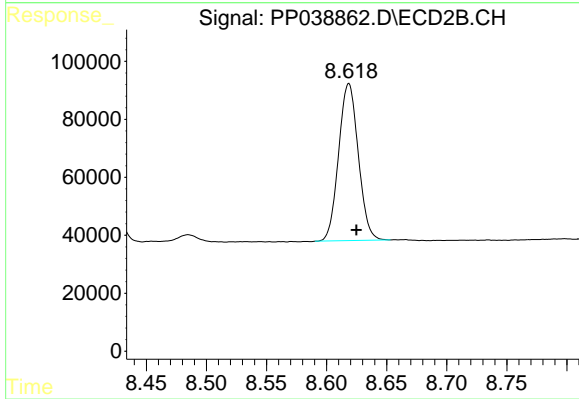
#43 AR-1268-3

R.T.: 8.326 min
 Delta R.T.: -0.007 min
 Response: 1439045
 Conc: 494.29 ng/ml



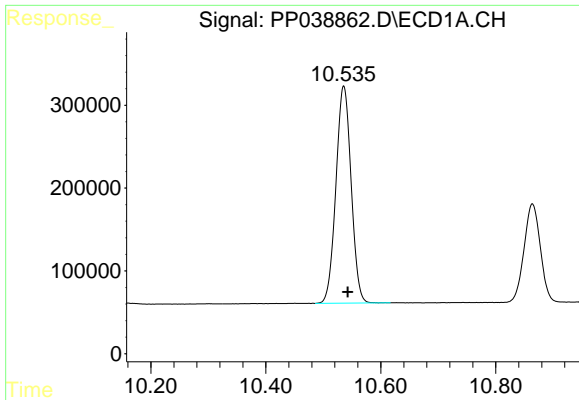
#44 AR-1268-4

R.T.: 10.130 min
 Delta R.T.: -0.004 min
 Response: 612235
 Conc: 502.55 ng/ml



#44 AR-1268-4

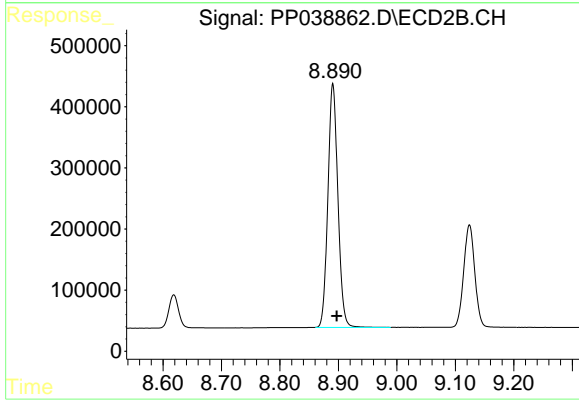
R.T.: 8.619 min
 Delta R.T.: -0.006 min
 Response: 616833
 Conc: 487.72 ng/ml



#45 AR-1268-5

R.T.: 10.536 min
Delta R.T.: -0.007 min
Response: 4801166
Conc: 503.93 ng/ml

Instrument :
ECD_P
ClientSampled :
AR1268CCC500



#45 AR-1268-5

R.T.: 8.891 min
Delta R.T.: -0.007 min
Response: 4738463
Conc: 487.57 ng/ml