

Data Path : Z:\pestpcbsrv\HPCHEM1\ECD\_P\Data\PP082421\  
 Data File : PP038863.D  
 Signal(s) : Signal #1: ECD1A.CH Signal #2: ECD2B.CH  
 Acq On : 24 Aug 2021 21:16  
 Operator : AJ\MA  
 Sample : I.BLK  
 Misc :  
 ALS Vial : 2 Sample Multiplier: 1

Instrument :  
 ECD\_P  
 ClientSampleId :  
 I.BLK

Integration File signal 1: autoint1.e  
 Integration File signal 2: autoint2.e  
 Quant Time: Aug 25 02:26:06 2021  
 Quant Method : Z:\pestpcbsrv\HPCHEM1\ECD\_P\methods\PP081721.M  
 Quant Title : GC EXTRACTABLES  
 QLast Update : Wed Aug 18 04:51:26 2021  
 Response via : Initial Calibration  
 Integrator: ChemStation 6890 Scale Mode: Small noise peaks clipped

Volume Inj. : 2 µl  
 Signal #1 Phase : ZB-MR1 Signal #2 Phase: ZB-MR2  
 Signal #1 Info : 30Mx0.32mmx 0.50µ Signal #2 Info : 30M x 0.32mm x 0.25µm

Compound	RT#1	RT#2	Resp#1	Resp#2	ng/ml	ng/ml
-----						
System Monitoring Compounds						
1) SA Tetrachlo...	4.881	3.866	795260	503646	19.705	21.017
2) SA Decachlor...	10.863	9.123	542231	529506	22.039	21.741

Target Compounds

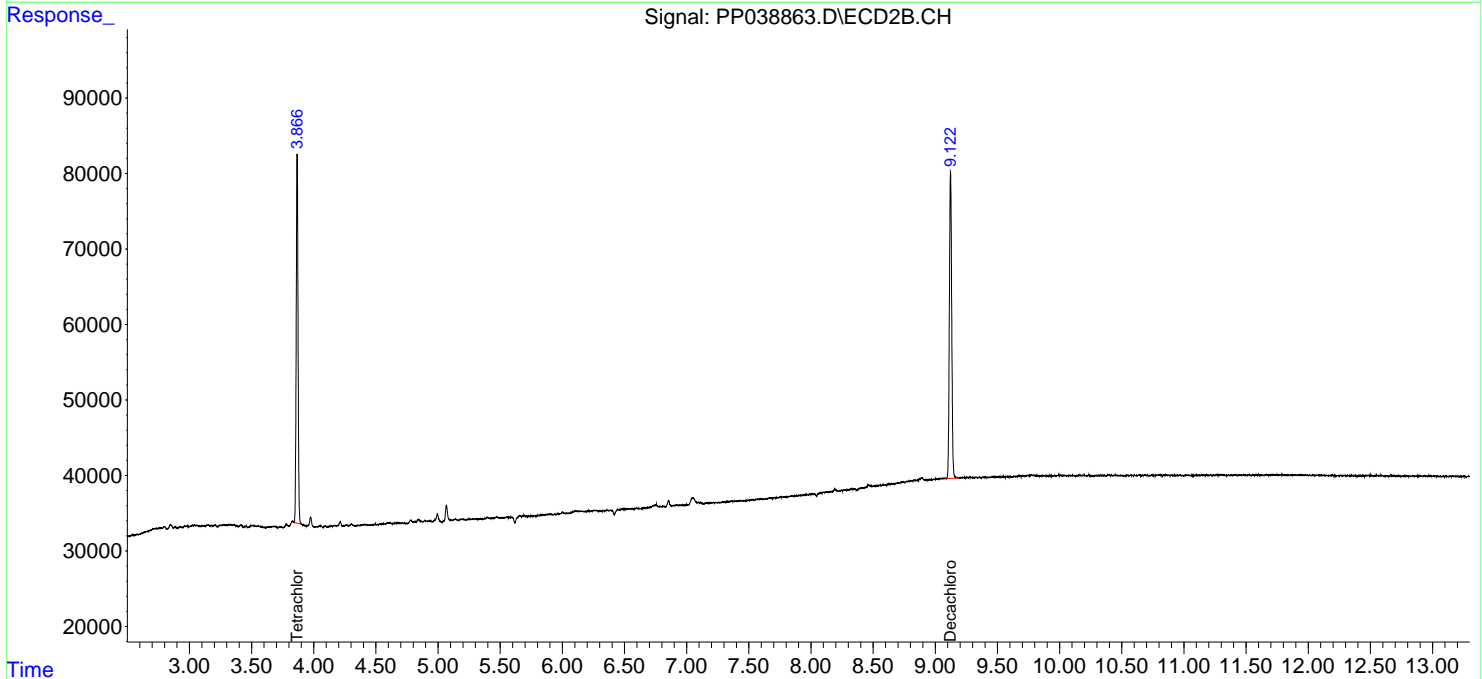
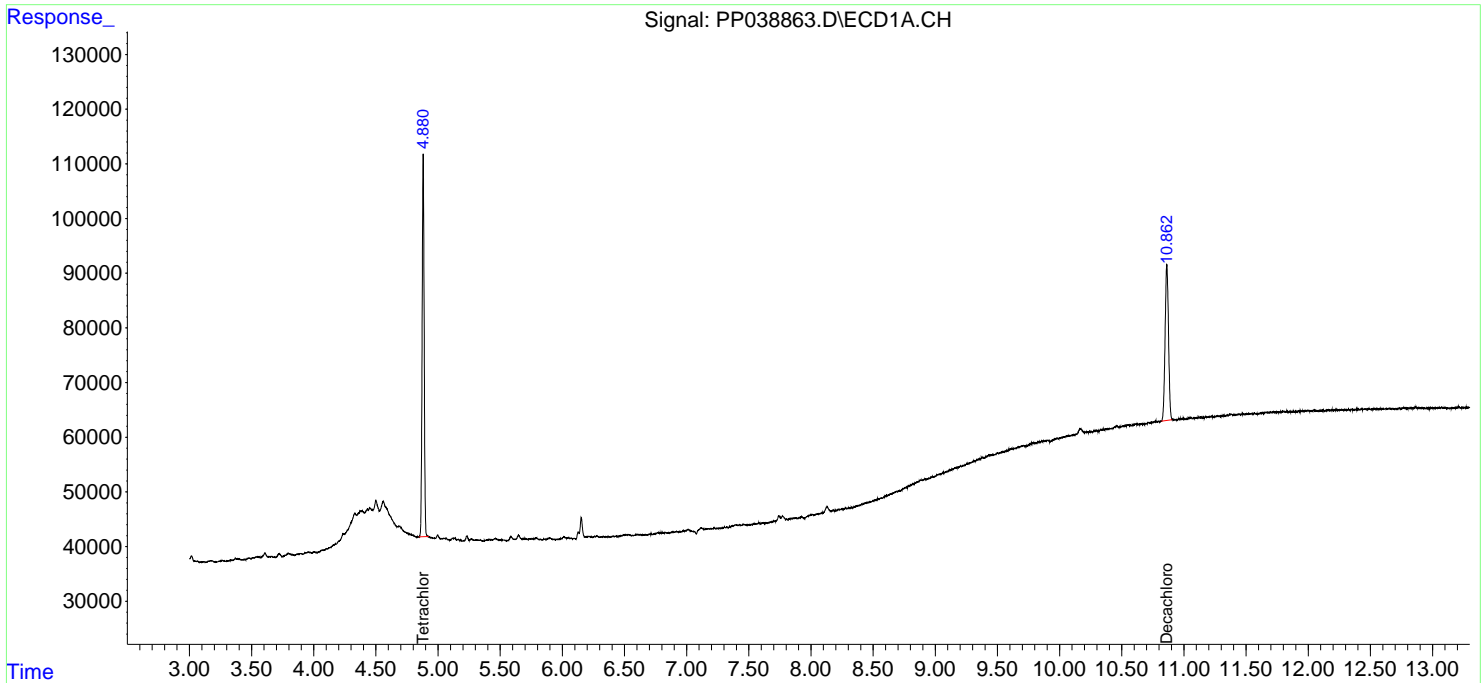
(f)=RT Delta > 1/2 Window (#)=Amounts differ by > 25% (m)=manual int.

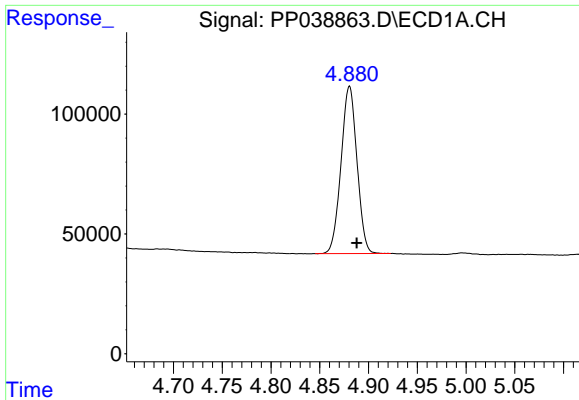
Data Path : Z:\pestpcbsrv\HPCHEM1\ECD\_P\Data\PP082421\  
 Data File : PP038863.D  
 Signal(s) : Signal #1: ECD1A.CH Signal #2: ECD2B.CH  
 Acq On : 24 Aug 2021 21:16  
 Operator : AJ\MA  
 Sample : I.BLK  
 Misc :  
 ALS Vial : 2 Sample Multiplier: 1

**Instrument :**  
 ECD\_P  
**ClientSampled :**  
 I.BLK

Integration File signal 1: autoint1.e  
 Integration File signal 2: autoint2.e  
 Quant Time: Aug 25 02:26:06 2021  
 Quant Method : Z:\pestpcbsrv\HPCHEM1\ECD\_P\methods\PP081721.M  
 Quant Title : GC EXTRACTABLES  
 QLast Update : Wed Aug 18 04:51:26 2021  
 Response via : Initial Calibration  
 Integrator: ChemStation 6890 Scale Mode: Small noise peaks clipped

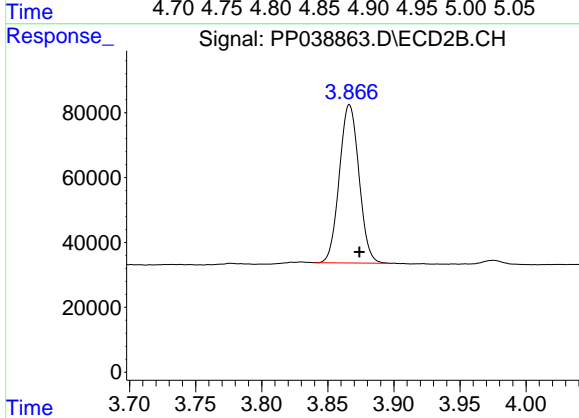
Volume Inj. : 2 µl  
 Signal #1 Phase : ZB-MR1 Signal #2 Phase: ZB-MR2  
 Signal #1 Info : 30Mx0.32mmx 0.50µ Signal #2 Info : 30M x 0.32mm x 0.25µm



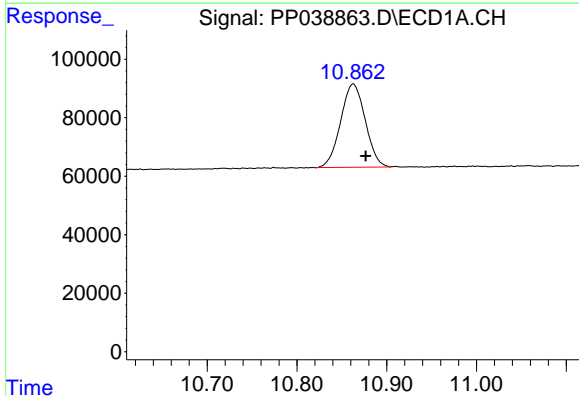


#1 Tetrachloro-m-xylene  
 R.T.: 4.881 min  
 Delta R.T.: -0.007 min  
 Response: 795260  
 Conc: 19.71 ng/ml

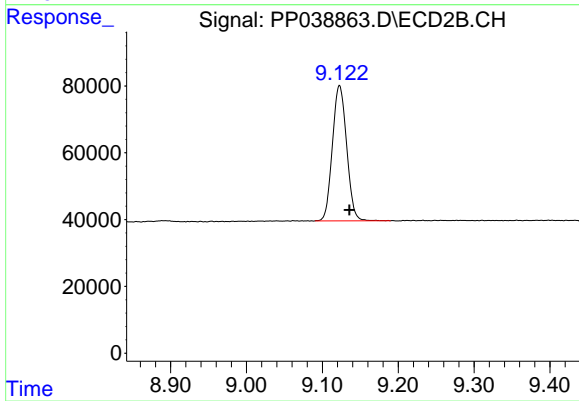
Instrument :  
 ECD\_P  
 ClientSampled :  
 I.BLK



#1 Tetrachloro-m-xylene  
 R.T.: 3.866 min  
 Delta R.T.: -0.008 min  
 Response: 503646  
 Conc: 21.02 ng/ml



#2 Decachlorobiphenyl  
 R.T.: 10.863 min  
 Delta R.T.: -0.014 min  
 Response: 542231  
 Conc: 22.04 ng/ml



#2 Decachlorobiphenyl  
 R.T.: 9.123 min  
 Delta R.T.: -0.013 min  
 Response: 529506  
 Conc: 21.74 ng/ml