

Data Path : Z:\pestpcbsrv\HPCHEM1\ECD_P\Data\PP082422\
 Data File : PP050797.D
 Signal(s) : Signal #1: ECD1A.ch Signal #2: ECD2B.ch
 Acq On : 24 Aug 2022 22:19
 Operator : YP\AJ
 Sample : N4316-01 10X
 Misc :
 ALS Vial : 23 Sample Multiplier: 1

Integration File signal 1: autoint1.e
 Integration File signal 2: autoint2.e
 Quant Time: Aug 25 01:53:47 2022
 Quant Method : Z:\pestpcbsrv\HPCHEM1\ECD_P\methods\PP080622.M
 Quant Title : GC EXTRACTABLES
 QLast Update : Tue Aug 09 11:38:04 2022
 Response via : Initial Calibration
 Integrator: ChemStation

Volume Inj. : 2 µl
 Signal #1 Phase : ZB-MR1 Signal #2 Phase: ZB-MR2
 Signal #1 Info : 30Mx0.32mmx 0.50µ Signal #2 Info : 30M x 0.32mm x 0.25µm

Compound	RT#1	RT#2	Resp#1	Resp#2	ng/ml	ng/ml

System Monitoring Compounds						
1) SA Tetrachlo...	4.339	3.587	3108817	4910755	1.931	1.568
2) SA Decachlor...	10.081	8.546	3520472	2180801	1.999	1.417 #

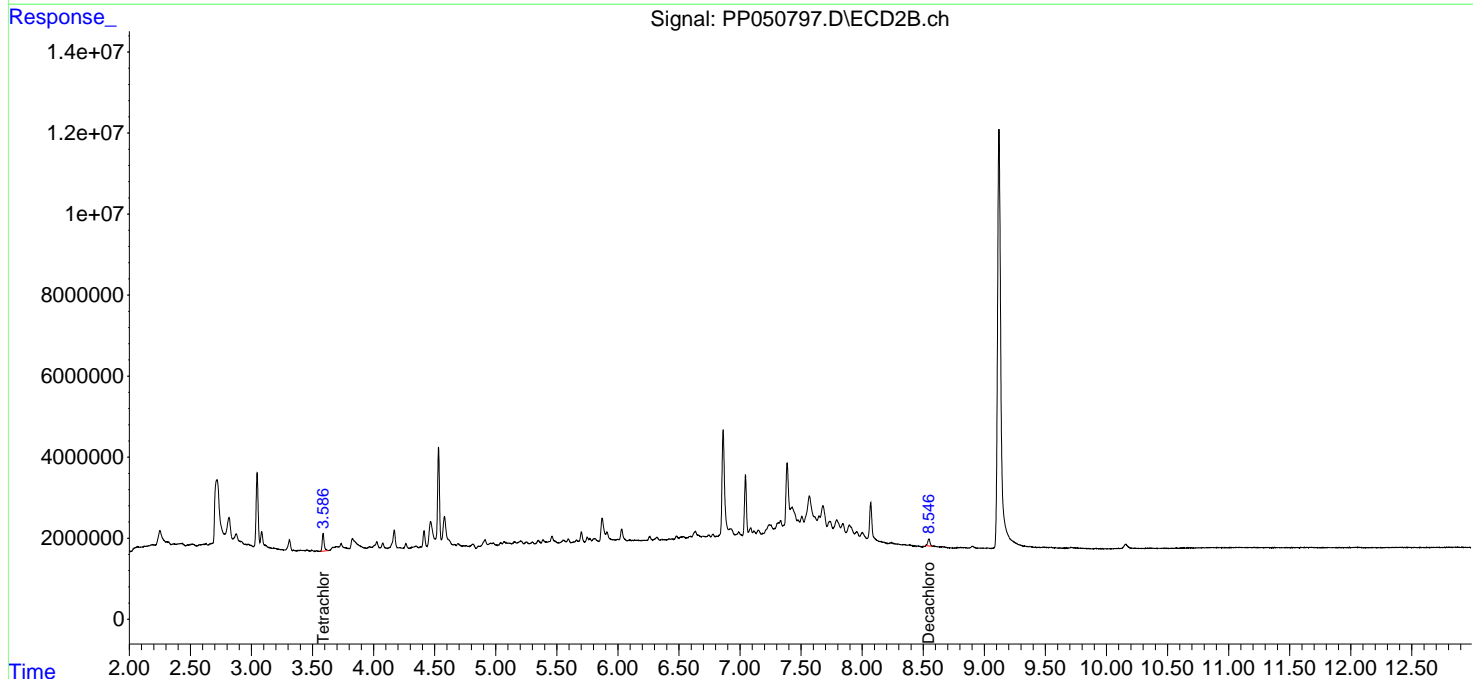
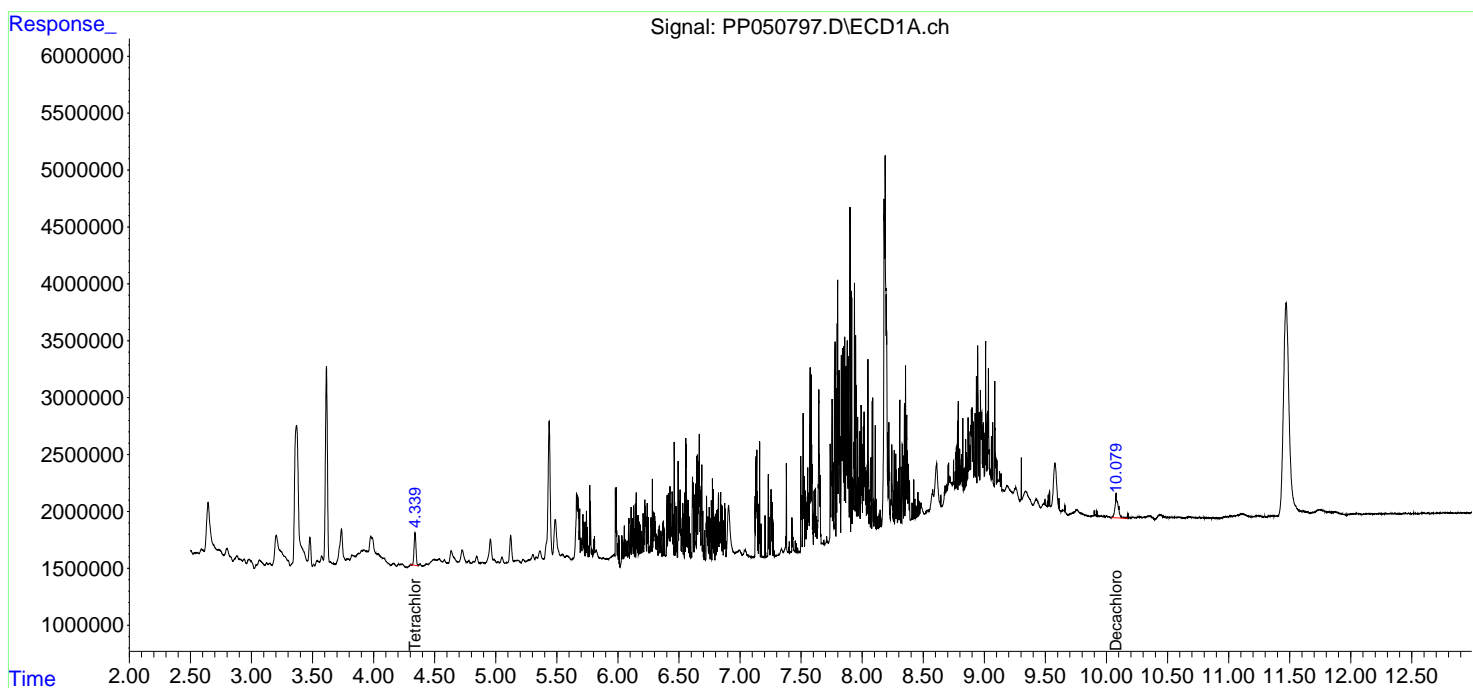
Target Compounds

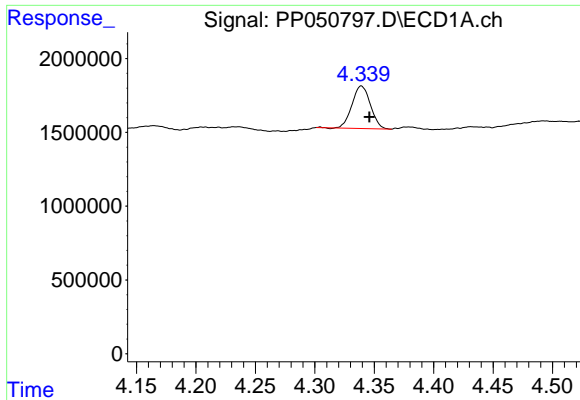
(f)=RT Delta > 1/2 Window (#)=Amounts differ by > 25% (m)=manual int.

Data Path : Z:\pestpcbsrv\HPCHEM1\ECD_P\Data\PP082422\
 Data File : PP050797.D
 Signal(s) : Signal #1: ECD1A.ch Signal #2: ECD2B.ch
 Acq On : 24 Aug 2022 22:19
 Operator : YP\AJ
 Sample : N4316-01 10X
 Misc :
 ALS Vial : 23 Sample Multiplier: 1

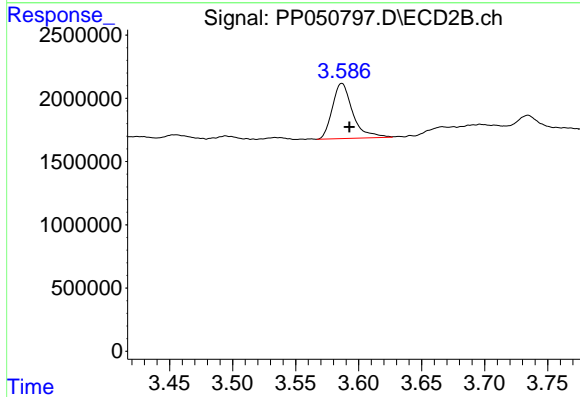
Integration File signal 1: autoint1.e
 Integration File signal 2: autoint2.e
 Quant Time: Aug 25 01:53:47 2022
 Quant Method : Z:\pestpcbsrv\HPCHEM1\ECD_P\methods\PP080622.M
 Quant Title : GC EXTRACTABLES
 QLast Update : Tue Aug 09 11:38:04 2022
 Response via : Initial Calibration
 Integrator: ChemStation

Volume Inj. : 2 µl
 Signal #1 Phase : ZB-MR1 Signal #2 Phase: ZB-MR2
 Signal #1 Info : 30Mx0.32mmx 0.50µ Signal #2 Info : 30M x 0.32mm x 0.25µm

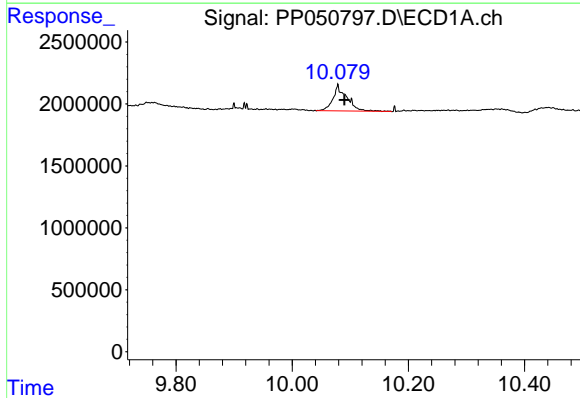




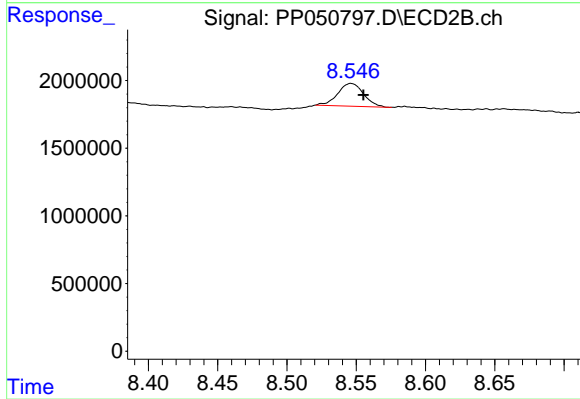
#1 Tetrachloro-m-xylene
R.T.: 4.339 min
Delta R.T.: -0.007 min
Response: 3108817
Conc: 1.93 ng/ml



#1 Tetrachloro-m-xylene
R.T.: 3.587 min
Delta R.T.: -0.006 min
Response: 4910755
Conc: 1.57 ng/ml



#2 Decachlorobiphenyl
R.T.: 10.081 min
Delta R.T.: -0.009 min
Response: 3520472
Conc: 2.00 ng/ml



#2 Decachlorobiphenyl
R.T.: 8.546 min
Delta R.T.: -0.009 min
Response: 2180801
Conc: 1.42 ng/ml