

Data Path : Z:\pestpcbsrv\HPCHEM1\ECD_P\Data\PP082721\
 Data File : PP039014.D
 Signal(s) : Signal #1: ECD1A.CH Signal #2: ECD2B.CH
 Acq On : 27 Aug 2021 21:18
 Operator : AJ\MA
 Sample : AR1254CCC500
 Misc :
 ALS Vial : 6 Sample Multiplier: 1

Instrument :
 ECD_P
 ClientSampleId :
 AR1254CCC500

Integration File signal 1: autoint1.e
 Integration File signal 2: autoint2.e
 Quant Time: Aug 28 04:18:52 2021
 Quant Method : Z:\pestpcbsrv\HPCHEM1\ECD_P\methods\PP082521.M
 Quant Title : GC EXTRACTABLES
 QLast Update : Thu Aug 26 09:31:39 2021
 Response via : Initial Calibration
 Integrator: ChemStation 6890 Scale Mode: Small noise peaks clipped

Volume Inj. : 2 µl
 Signal #1 Phase : ZB-MR1 Signal #2 Phase: ZB-MR2
 Signal #1 Info : 30Mx0.32mmx 0.50µ Signal #2 Info : 30M x 0.32mm x 0.25µm

Compound	RT#1	RT#2	Resp#1	Resp#2	ng/ml	ng/ml

System Monitoring Compounds						
1) SA Tetrachlo...	4.875	3.860	1943845	1252064	50.924	51.954
2) SA Decachlor...	10.850	9.115	1147739	1080237	47.669	47.774
Target Compounds						
3) L1 AR-1016-1	6.192	5.102	14807	4657	12.843	5.385 #
4) L1 AR-1016-2	6.219	5.102f	20729	4657	12.407	3.852 #
6) L1 AR-1016-4	0.000	5.366	0	238679	N.D.	489.433 #
7) L1 AR-1016-5	6.704	5.591	182949	153307	255.915	243.193
9) L2 AR-1221-2	5.226	4.207	24647	16619	73.989	83.039
12) L3 AR-1232-2	0.000	5.102f	0	4657	N.D.	8.607 #
13) L3 AR-1232-3	6.219	0.000	20729	0	26.730	N.D. #
14) L3 AR-1232-4	0.000	5.408	0	63416	N.D.	277.326 #
15) L3 AR-1232-5	6.486	5.591	324911	153307	1331.584	609.134 #
16) L4 AR-1242-1	6.192	5.102	14807	4657	15.712	7.073 #
17) L4 AR-1242-2	6.219	5.102f	20729	4657	15.467	5.041 #
19) L4 AR-1242-4	0.000	5.408	0	63416	N.D.	140.752 #
20) L4 AR-1242-5	7.174	5.969	172266	606180	271.559	1063.273 #
21) L5 AR-1248-1	6.192	5.102	14807	4657	20.937	9.818 #
22) L5 AR-1248-2	6.486	5.366	324911	238679	376.040	366.214
23) L5 AR-1248-3	6.704	5.408	182949	63416	188.549	93.795 #
24) L5 AR-1248-4	7.132	5.591	282099	153307	268.447	188.942 #
25) L5 AR-1248-5	7.174	6.012	172266	73326	166.699	89.149 #
26) L6 AR-1254-1	7.101	5.969	515580	606180	494.128	491.977
27) L6 AR-1254-2	7.331	6.130	690583	520886	456.131	479.088
28) L6 AR-1254-3	7.712	6.547	696659	884167	452.174	508.964
29) L6 AR-1254-4	8.010	6.787	501020	558327	447.256	502.936
30) L6 AR-1254-5	8.438	7.214	487985	747357	432.235	492.856
31) L7 AR-1260-1	7.879	6.685	271858	438938	285.208	400.475 #
32) L7 AR-1260-2	8.145	6.883	308400	344186	256.048	258.698
33) L7 AR-1260-3	8.500	7.031	63237	357093	71.719	258.407 #
34) L7 AR-1260-4	8.736	7.516	201787	31042	199.388	29.526 #
35) L7 AR-1260-5	9.064	7.765	72736	78763	33.564	30.343
36) L8 AR-1262-1	8.500	7.214	63237	747357	47.349	874.398 #
37) L8 AR-1262-2	9.064	7.765	72736	78763	28.515	26.366
38) L8 AR-1262-3	9.393f	0.000	55113	0	45.357	N.D. #
39) L8 AR-1262-4	0.000	8.109	0	82005	N.D.	36.264 #
41) L9 AR-1268-1	9.393f	0.000	55113	0	17.172	N.D. #
42) L9 AR-1268-2	0.000	8.109	0	82005	N.D.	24.334 #

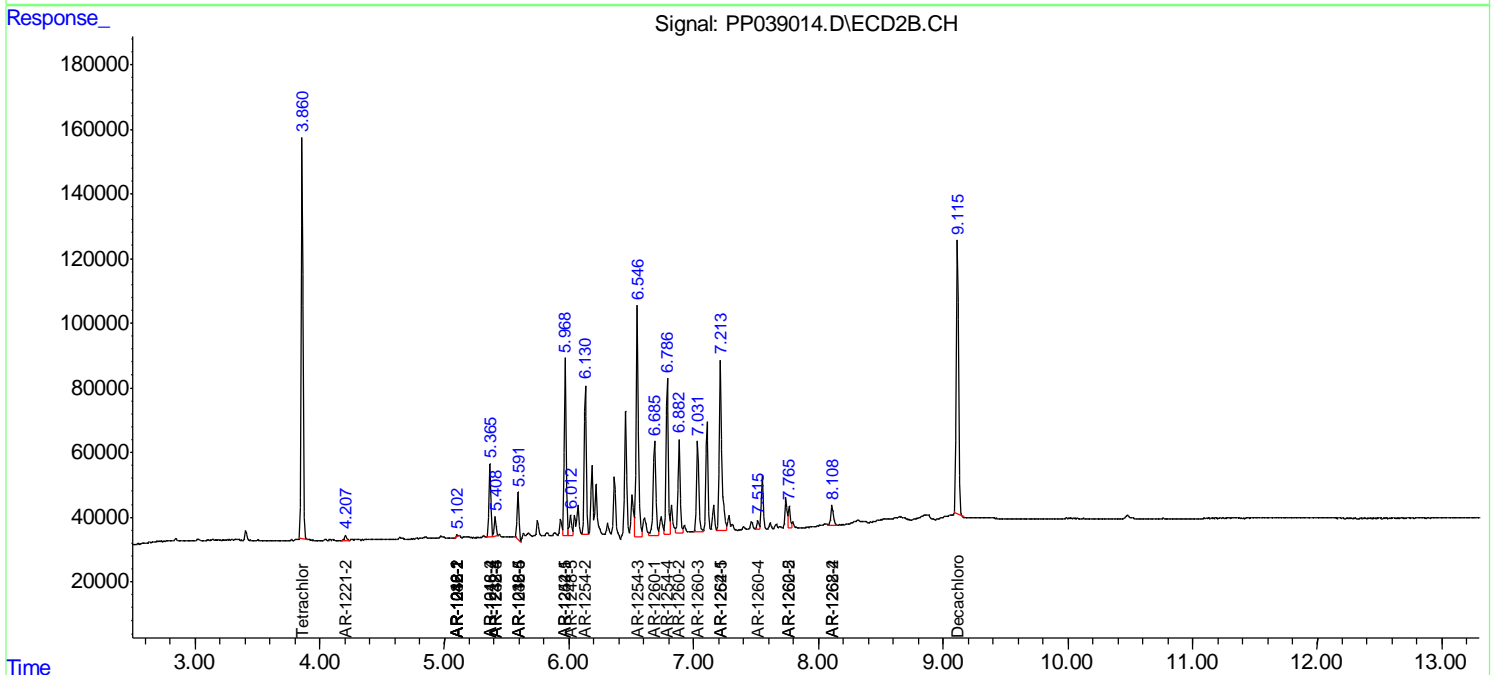
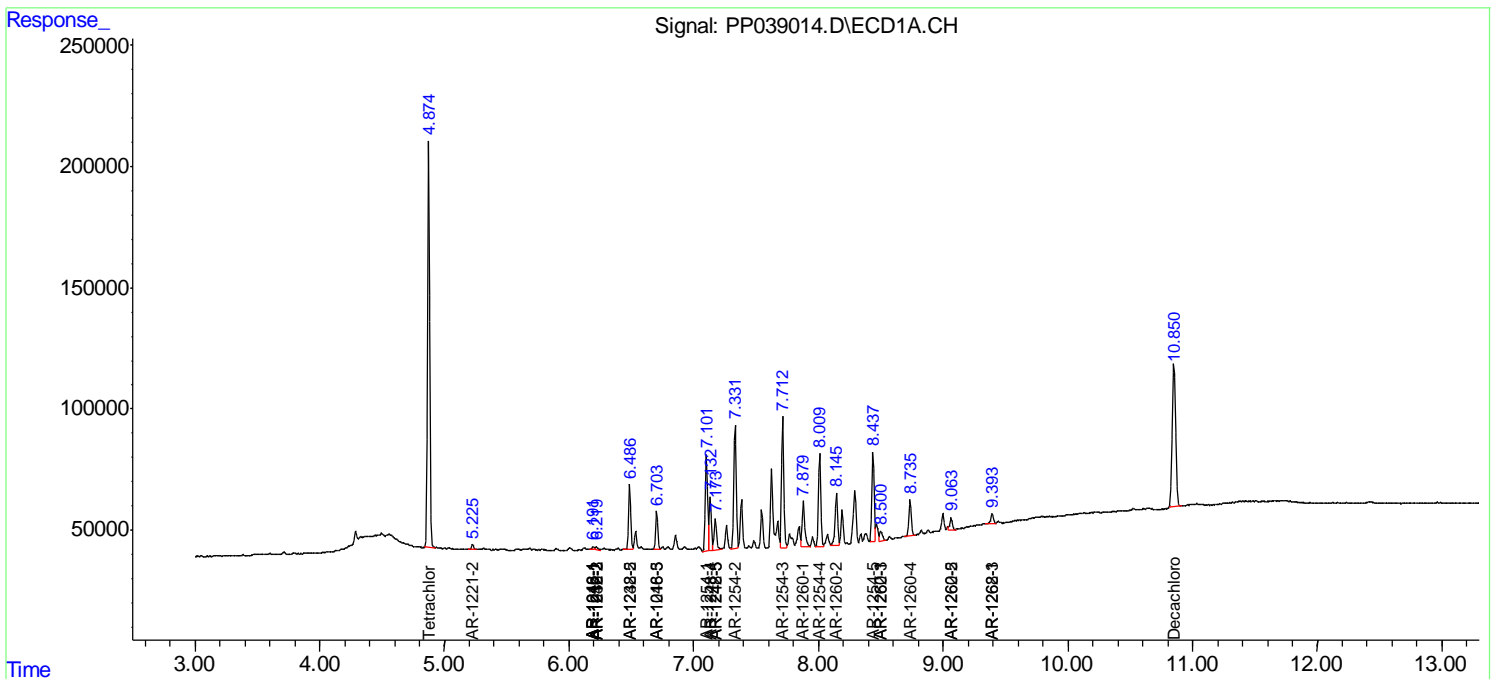
(f)=RT Delta > 1/2 Window (#)=Amounts differ by > 25% (m)=manual int.

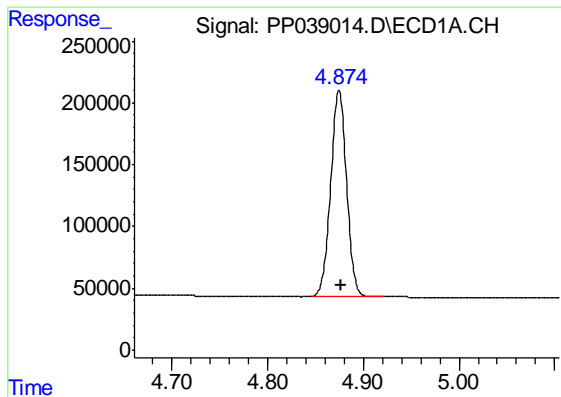
Data Path : Z:\pestpcbsrv\HPCHEM1\ECD_P\Data\PP082721\
 Data File : PP039014.D
 Signal(s) : Signal #1: ECD1A.CH Signal #2: ECD2B.CH
 Acq On : 27 Aug 2021 21:18
 Operator : AJ\MA
 Sample : AR1254CCC500
 Misc :
 ALS Vial : 6 Sample Multiplier: 1

Instrument :
 ECD_P
 Client Sampled :
 AR1254CCC500

Integration File signal 1: autoint1.e
 Integration File signal 2: autoint2.e
 Quant Time: Aug 28 04:18:52 2021
 Quant Method : Z:\pestpcbsrv\HPCHEM1\ECD_P\methods\PP082521.M
 Quant Title : GC EXTRACTABLES
 QLast Update : Thu Aug 26 09:31:39 2021
 Response via : Initial Calibration
 Integrator: ChemStation 6890 Scale Mode: Small noise peaks clipped

Volume Inj. : 2 µl
 Signal #1 Phase : ZB-MR1 Signal #2 Phase: ZB-MR2
 Signal #1 Info : 30Mx0.32mmx 0.50µ Signal #2 Info : 30M x 0.32mm x 0.25µm

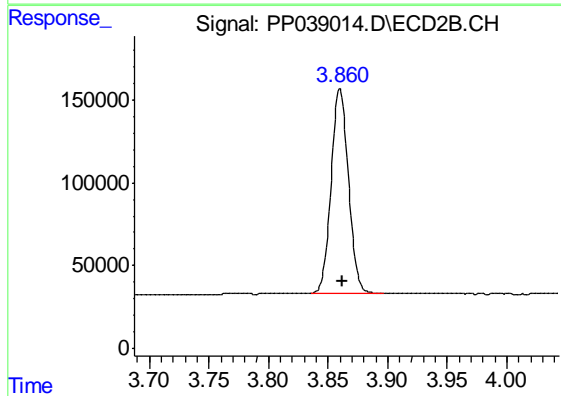




#1 Tetrachloro-m-xylene

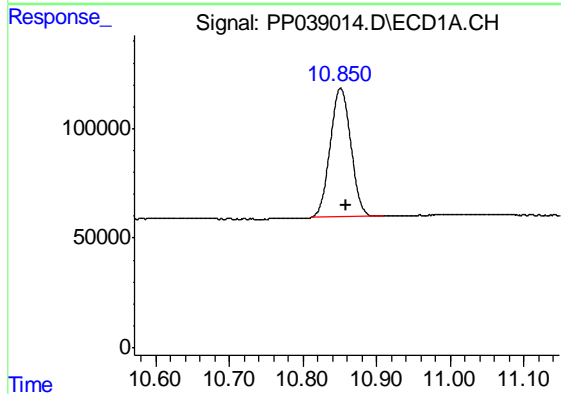
R.T.: 4.875 min
Delta R.T.: -0.002 min
Response: 1943845
Conc: 50.92 ng/ml

Instrument :
ECD_P
ClientSampleId :
AR1254CCC500



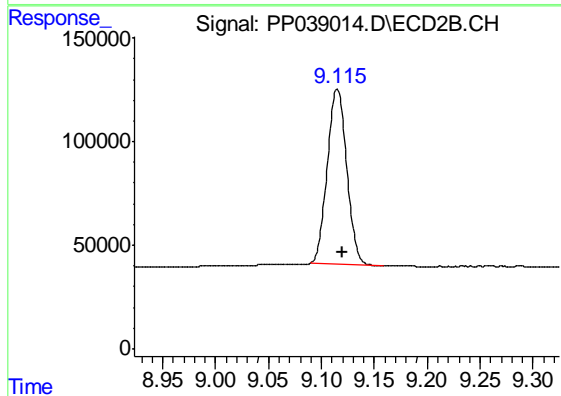
#1 Tetrachloro-m-xylene

R.T.: 3.860 min
Delta R.T.: -0.002 min
Response: 1252064
Conc: 51.95 ng/ml



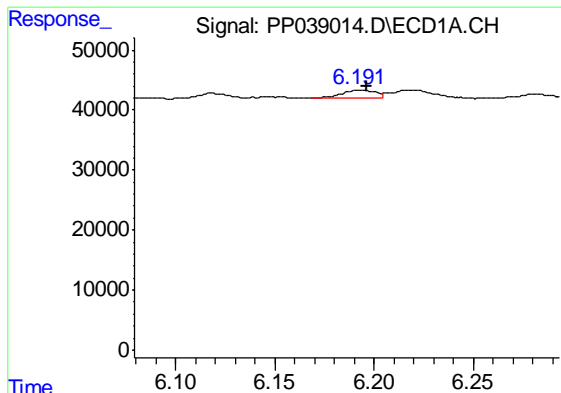
#2 Decachlorobiphenyl

R.T.: 10.850 min
Delta R.T.: -0.008 min
Response: 1147739
Conc: 47.67 ng/ml



#2 Decachlorobiphenyl

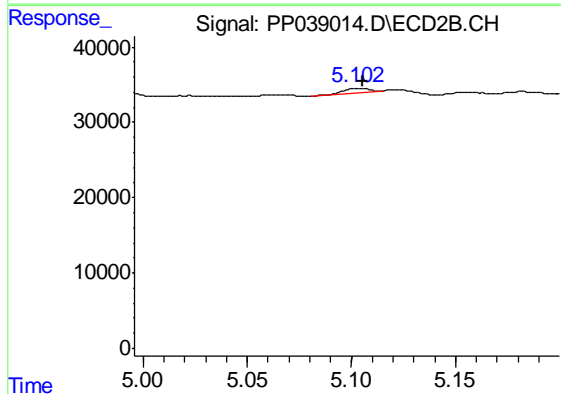
R.T.: 9.115 min
Delta R.T.: -0.005 min
Response: 1080237
Conc: 47.77 ng/ml



#3 AR-1016-1

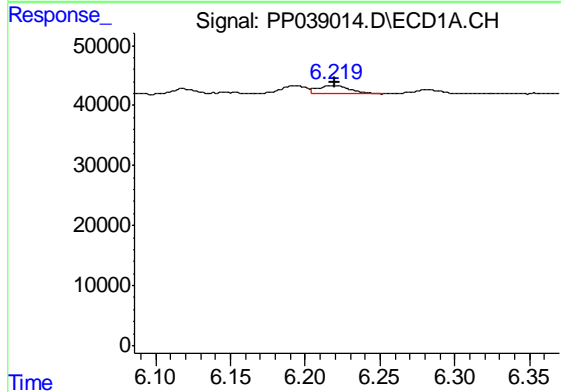
R.T.: 6.192 min
 Delta R.T.: -0.004 min
 Response: 14807
 Conc: 12.84 ng/ml

Instrument :
 ECD_P
 ClientSampleId :
 AR1254CCC500



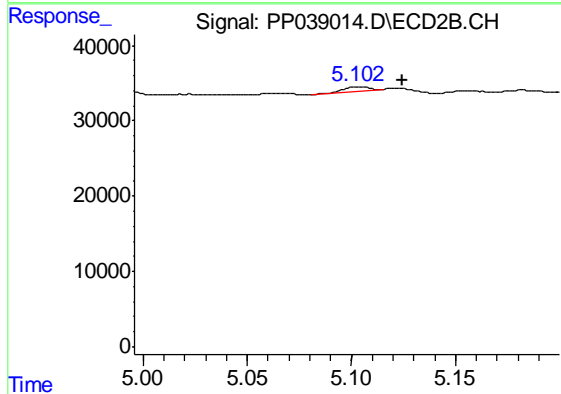
#3 AR-1016-1

R.T.: 5.102 min
 Delta R.T.: -0.003 min
 Response: 4657
 Conc: 5.38 ng/ml



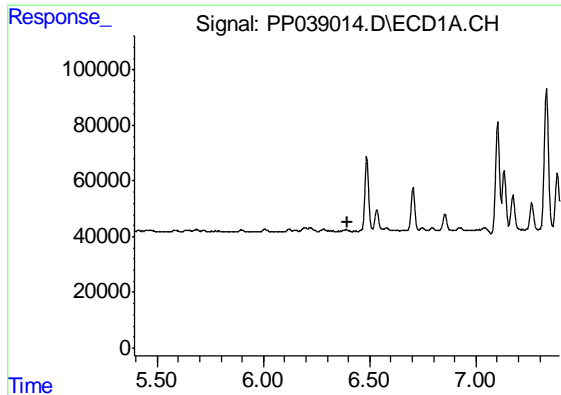
#4 AR-1016-2

R.T.: 6.219 min
 Delta R.T.: 0.000 min
 Response: 20729
 Conc: 12.41 ng/ml



#4 AR-1016-2

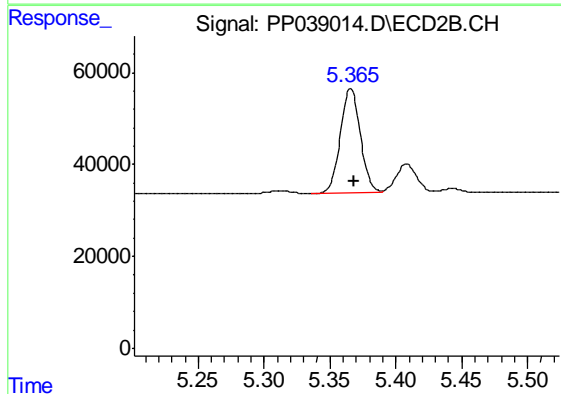
R.T.: 5.102 min
 Delta R.T.: -0.022 min
 Response: 4657
 Conc: 3.85 ng/ml



#6 AR-1016-4

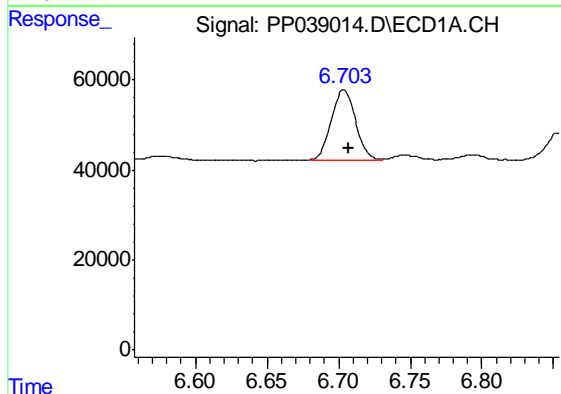
R.T.: 0.000 min
 Exp R.T. : 6.393 min
 Response: 0
 Conc: N.D.

Instrument :
 ECD_P
 ClientSampleId :
 AR1254CCC500



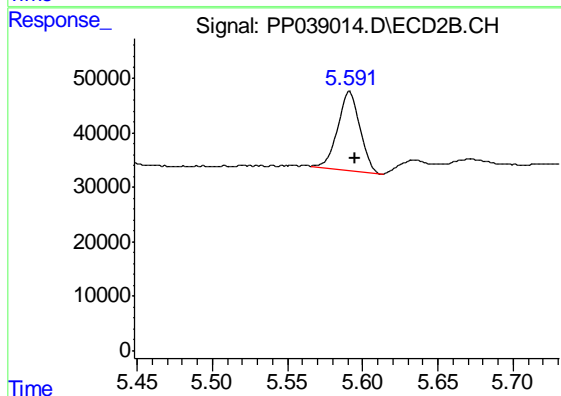
#6 AR-1016-4

R.T.: 5.366 min
 Delta R.T.: -0.003 min
 Response: 238679
 Conc: 489.43 ng/ml



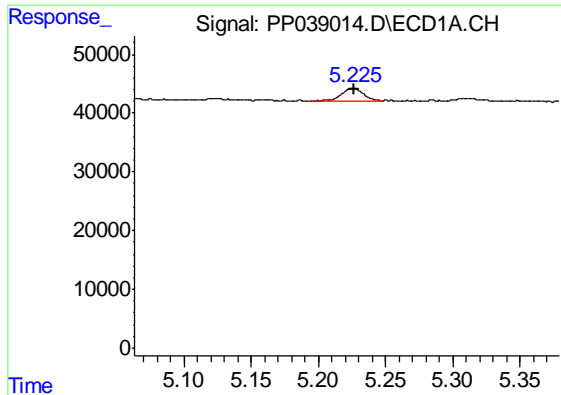
#7 AR-1016-5

R.T.: 6.704 min
 Delta R.T.: -0.004 min
 Response: 182949
 Conc: 255.91 ng/ml



#7 AR-1016-5

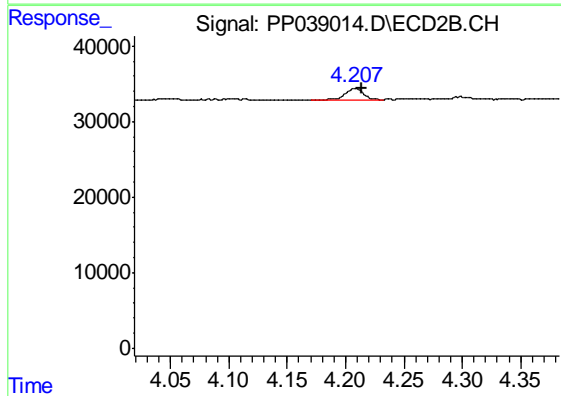
R.T.: 5.591 min
 Delta R.T.: -0.004 min
 Response: 153307
 Conc: 243.19 ng/ml



#9 AR-1221-2

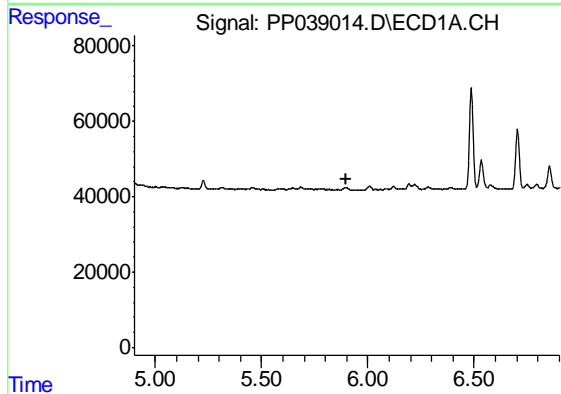
R.T.: 5.226 min
 Delta R.T.: 0.000 min
 Response: 24647
 Conc: 73.99 ng/ml

Instrument :
 ECD_P
 ClientSampleId :
 AR1254CCC500



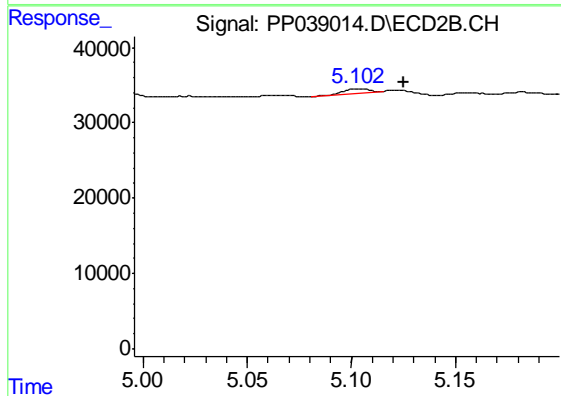
#9 AR-1221-2

R.T.: 4.207 min
 Delta R.T.: -0.007 min
 Response: 16619
 Conc: 83.04 ng/ml



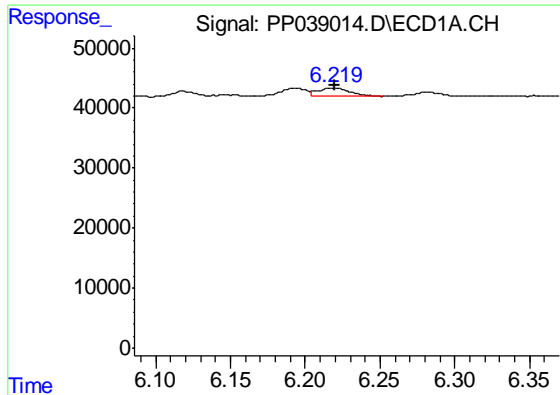
#12 AR-1232-2

R.T.: 0.000 min
 Exp R.T. : 5.901 min
 Response: 0
 Conc: N.D.



#12 AR-1232-2

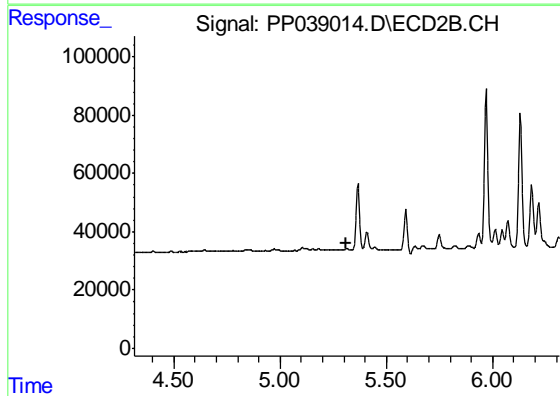
R.T.: 5.102 min
 Delta R.T.: -0.023 min
 Response: 4657
 Conc: 8.61 ng/ml



#13 AR-1232-3

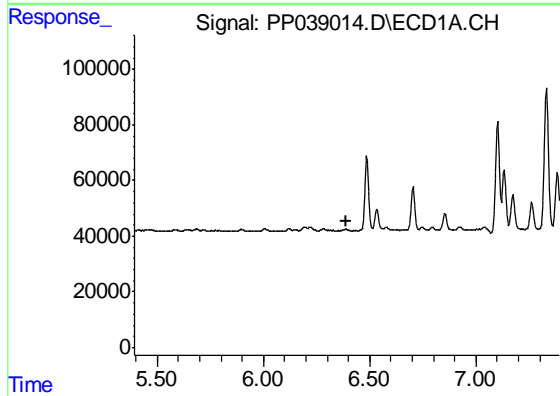
R.T.: 6.219 min
 Delta R.T.: 0.000 min
 Response: 20729
 Conc: 26.73 ng/ml

Instrument :
 ECD_P
 ClientSampleId :
 AR1254CCC500



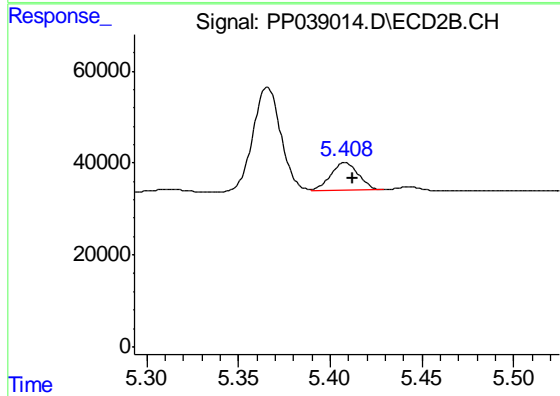
#13 AR-1232-3

R.T.: 0.000 min
 Exp R.T. : 5.314 min
 Response: 0
 Conc: N.D.



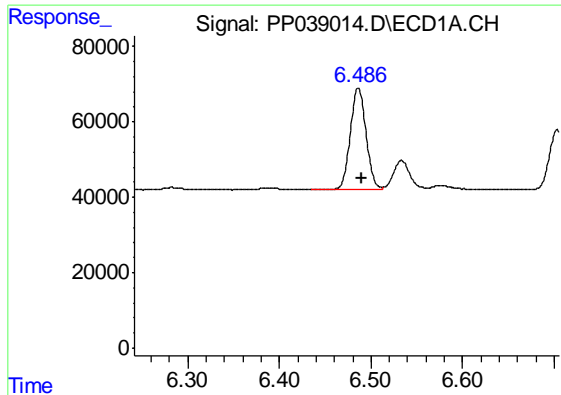
#14 AR-1232-4

R.T.: 0.000 min
 Exp R.T. : 6.393 min
 Response: 0
 Conc: N.D.



#14 AR-1232-4

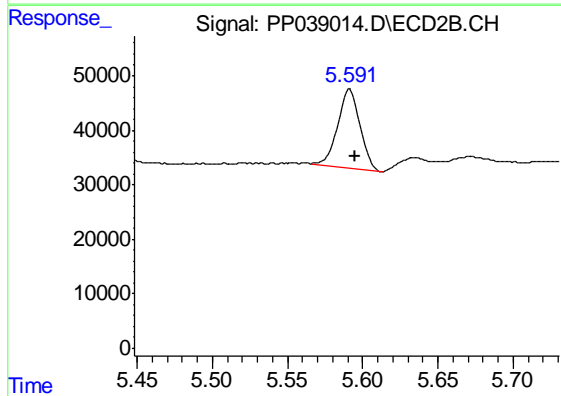
R.T.: 5.408 min
 Delta R.T.: -0.004 min
 Response: 63416
 Conc: 277.33 ng/ml



#15 AR-1232-5

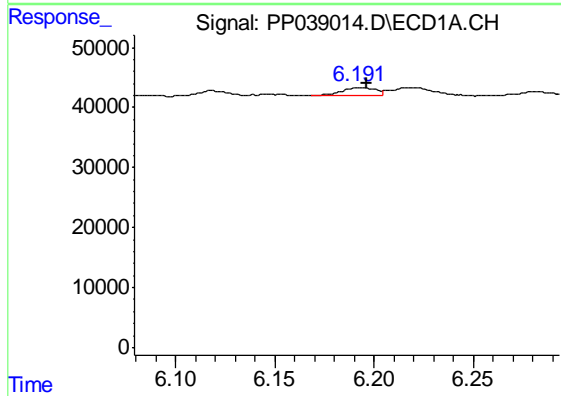
R.T.: 6.486 min
 Delta R.T.: -0.004 min
 Response: 324911
 Conc: 1331.58 ng/ml

Instrument :
 ECD_P
 ClientSampleId :
 AR1254CCC500



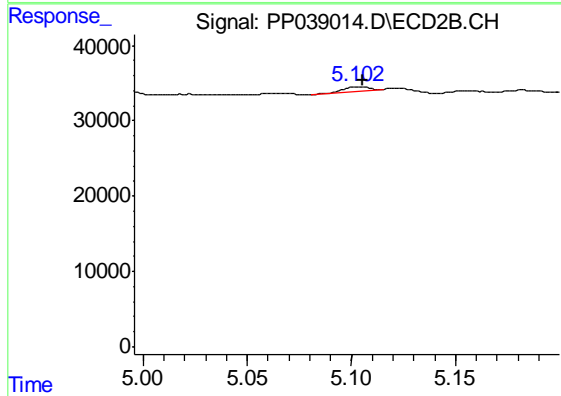
#15 AR-1232-5

R.T.: 5.591 min
 Delta R.T.: -0.004 min
 Response: 153307
 Conc: 609.13 ng/ml



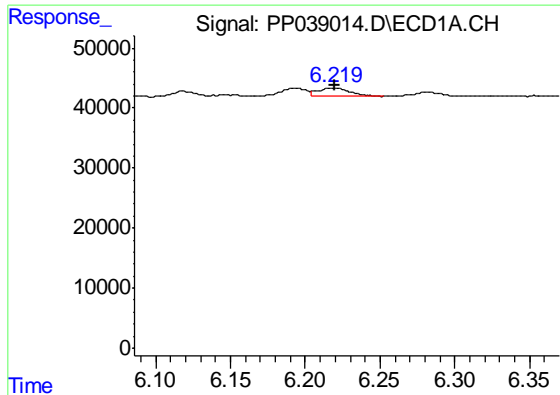
#16 AR-1242-1

R.T.: 6.192 min
 Delta R.T.: -0.005 min
 Response: 14807
 Conc: 15.71 ng/ml



#16 AR-1242-1

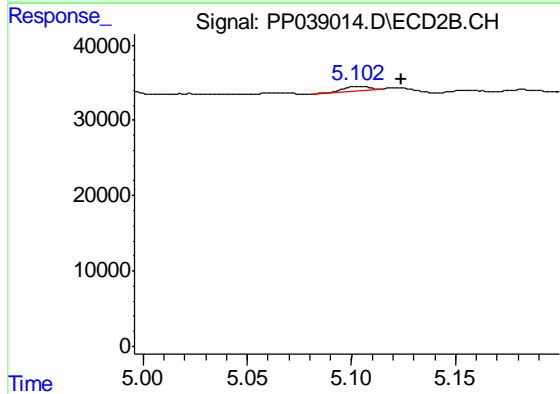
R.T.: 5.102 min
 Delta R.T.: -0.003 min
 Response: 4657
 Conc: 7.07 ng/ml



#17 AR-1242-2

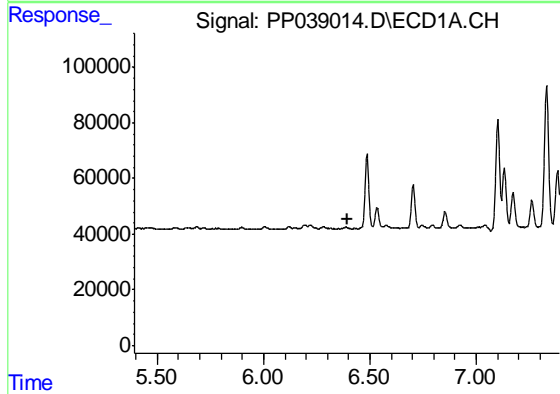
R.T.: 6.219 min
 Delta R.T.: 0.000 min
 Response: 20729
 Conc: 15.47 ng/ml

Instrument :
 ECD_P
 ClientSampleId :
 AR1254CCC500



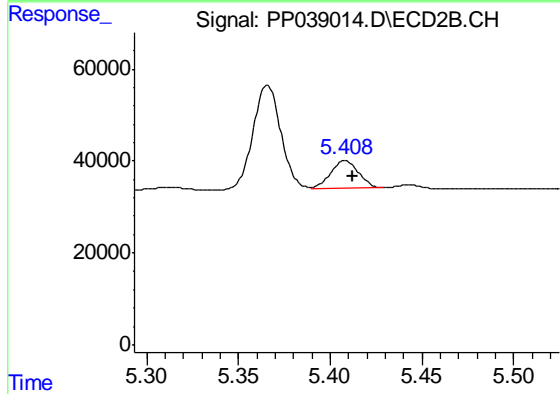
#17 AR-1242-2

R.T.: 5.102 min
 Delta R.T.: -0.022 min
 Response: 4657
 Conc: 5.04 ng/ml



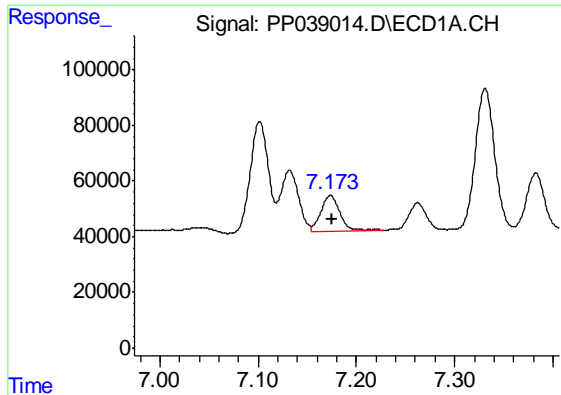
#19 AR-1242-4

R.T.: 0.000 min
 Exp R.T. : 6.392 min
 Response: 0
 Conc: N.D.



#19 AR-1242-4

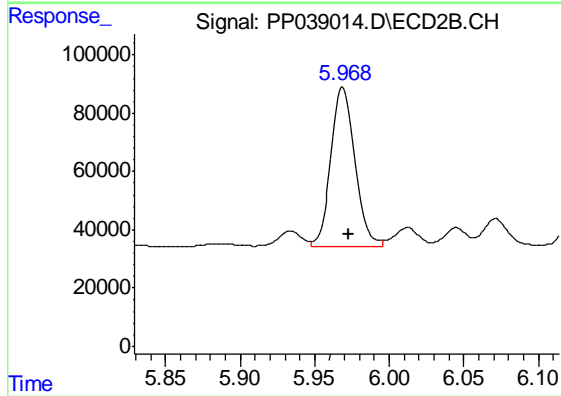
R.T.: 5.408 min
 Delta R.T.: -0.004 min
 Response: 63416
 Conc: 140.75 ng/ml



#20 AR-1242-5

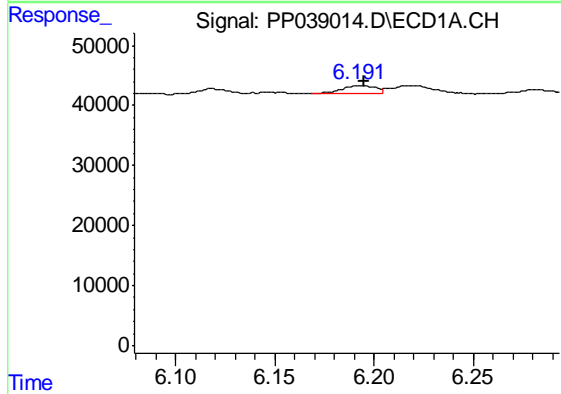
R.T.: 7.174 min
 Delta R.T.: -0.002 min
 Response: 172266
 Conc: 271.56 ng/ml

Instrument :
 ECD_P
 ClientSampleId :
 AR1254CCC500



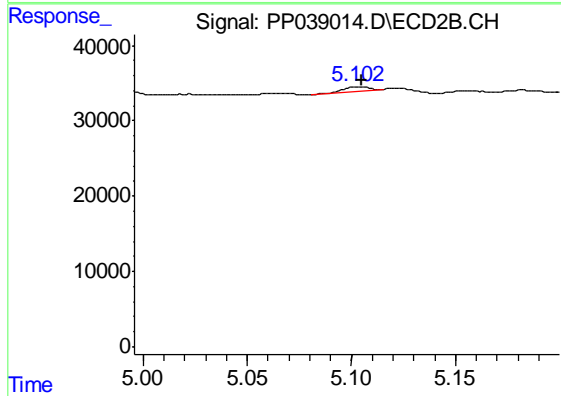
#20 AR-1242-5

R.T.: 5.969 min
 Delta R.T.: -0.004 min
 Response: 606180
 Conc: 1063.27 ng/ml



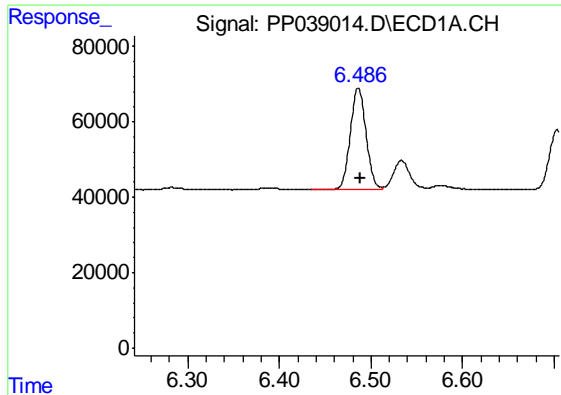
#21 AR-1248-1

R.T.: 6.192 min
 Delta R.T.: -0.003 min
 Response: 14807
 Conc: 20.94 ng/ml



#21 AR-1248-1

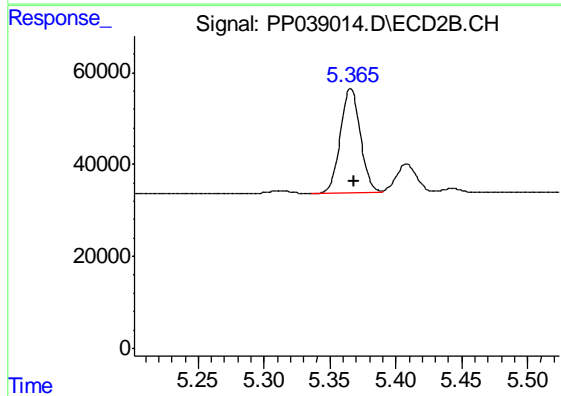
R.T.: 5.102 min
 Delta R.T.: -0.002 min
 Response: 4657
 Conc: 9.82 ng/ml



#22 AR-1248-2

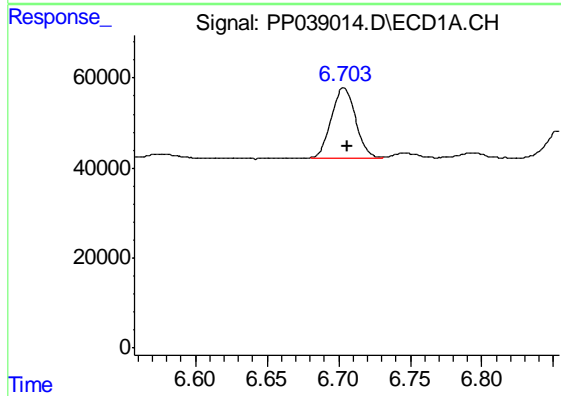
R.T.: 6.486 min
Delta R.T.: -0.003 min
Response: 324911
Conc: 376.04 ng/ml

Instrument :
ECD_P
ClientSampleId :
AR1254CCC500



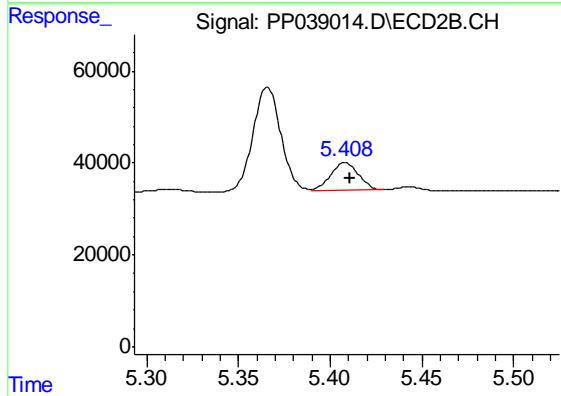
#22 AR-1248-2

R.T.: 5.366 min
Delta R.T.: -0.002 min
Response: 238679
Conc: 366.21 ng/ml



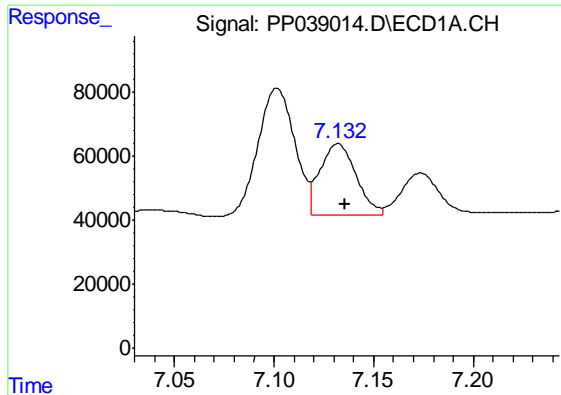
#23 AR-1248-3

R.T.: 6.704 min
Delta R.T.: -0.002 min
Response: 182949
Conc: 188.55 ng/ml



#23 AR-1248-3

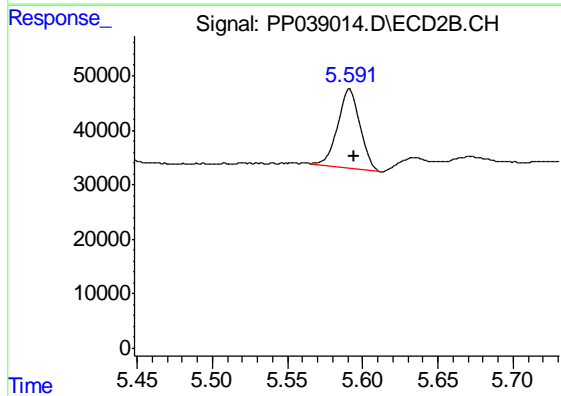
R.T.: 5.408 min
Delta R.T.: -0.003 min
Response: 63416
Conc: 93.80 ng/ml



#24 AR-1248-4

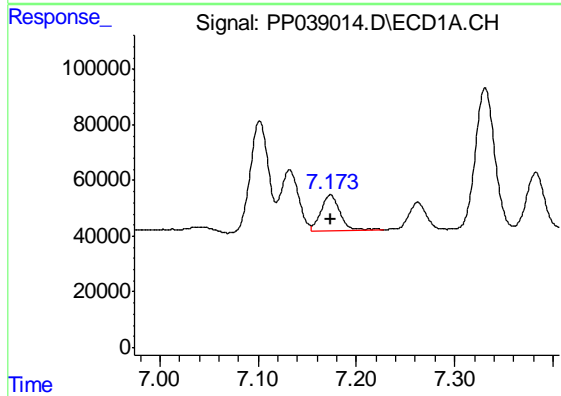
R.T.: 7.132 min
 Delta R.T.: -0.003 min
 Response: 282099
 Conc: 268.45 ng/ml

Instrument :
 ECD_P
 ClientSampleId :
 AR1254CCC500



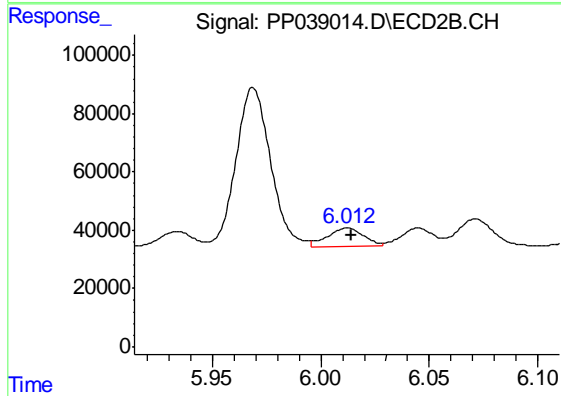
#24 AR-1248-4

R.T.: 5.591 min
 Delta R.T.: -0.003 min
 Response: 153307
 Conc: 188.94 ng/ml



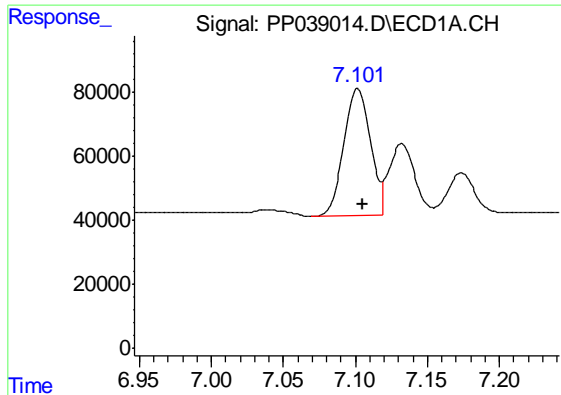
#25 AR-1248-5

R.T.: 7.174 min
 Delta R.T.: 0.000 min
 Response: 172266
 Conc: 166.70 ng/ml



#25 AR-1248-5

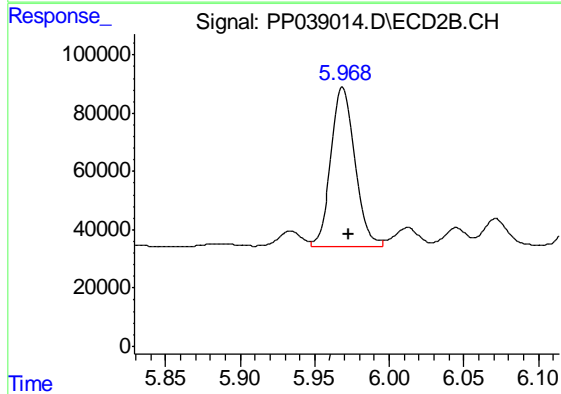
R.T.: 6.012 min
 Delta R.T.: -0.002 min
 Response: 73326
 Conc: 89.15 ng/ml



#26 AR-1254-1

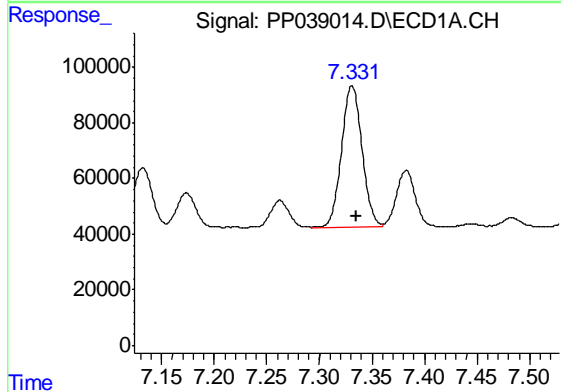
R.T.: 7.101 min
 Delta R.T.: -0.004 min
 Response: 515580
 Conc: 494.13 ng/ml

Instrument :
 ECD_P
 ClientSampleId :
 AR1254CCC500



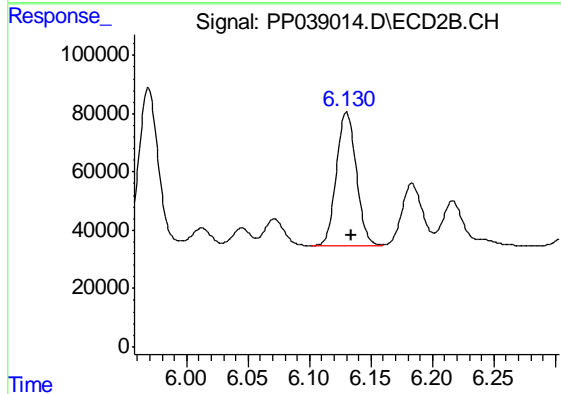
#26 AR-1254-1

R.T.: 5.969 min
 Delta R.T.: -0.005 min
 Response: 606180
 Conc: 491.98 ng/ml



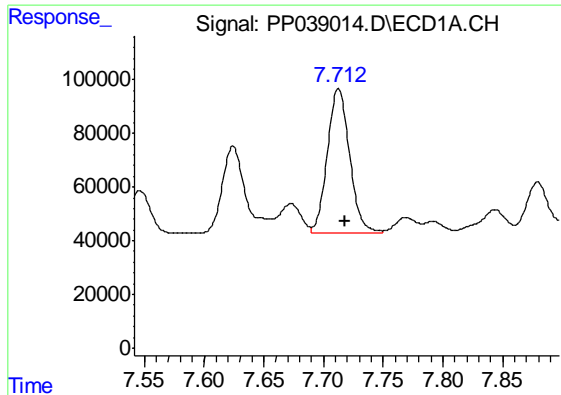
#27 AR-1254-2

R.T.: 7.331 min
 Delta R.T.: -0.004 min
 Response: 690583
 Conc: 456.13 ng/ml



#27 AR-1254-2

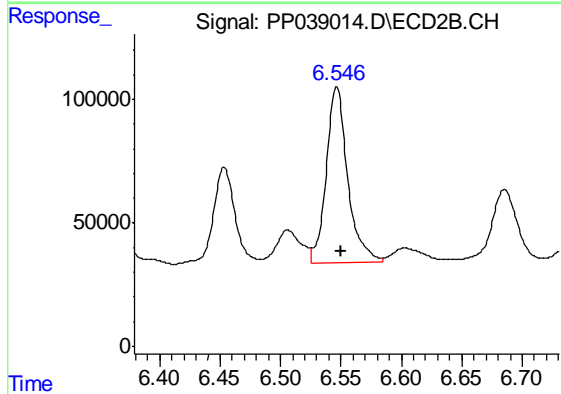
R.T.: 6.130 min
 Delta R.T.: -0.003 min
 Response: 520886
 Conc: 479.09 ng/ml



#28 AR-1254-3

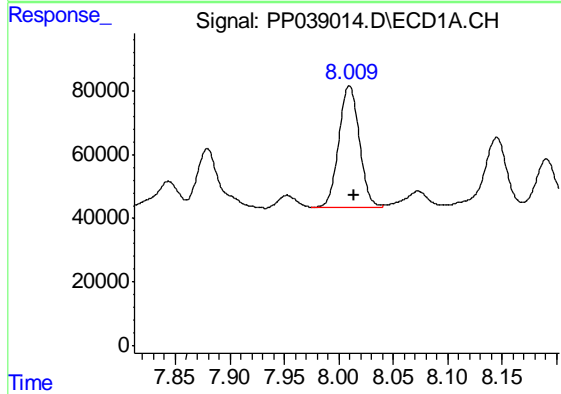
R.T.: 7.712 min
Delta R.T.: -0.005 min
Response: 696659
Conc: 452.17 ng/ml

Instrument :
ECD_P
ClientSampleId :
AR1254CCC500



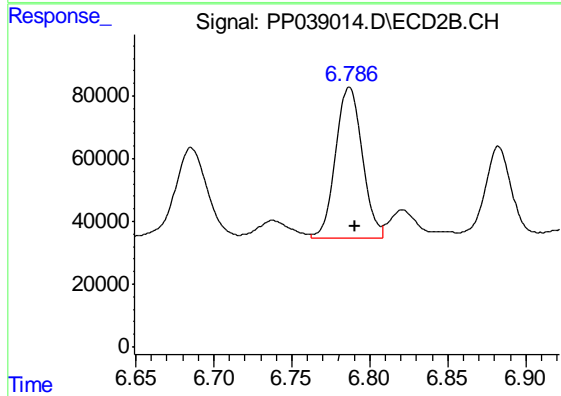
#28 AR-1254-3

R.T.: 6.547 min
Delta R.T.: -0.004 min
Response: 884167
Conc: 508.96 ng/ml



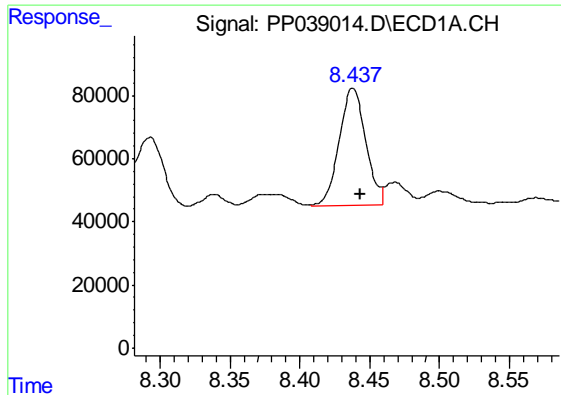
#29 AR-1254-4

R.T.: 8.010 min
Delta R.T.: -0.004 min
Response: 501020
Conc: 447.26 ng/ml



#29 AR-1254-4

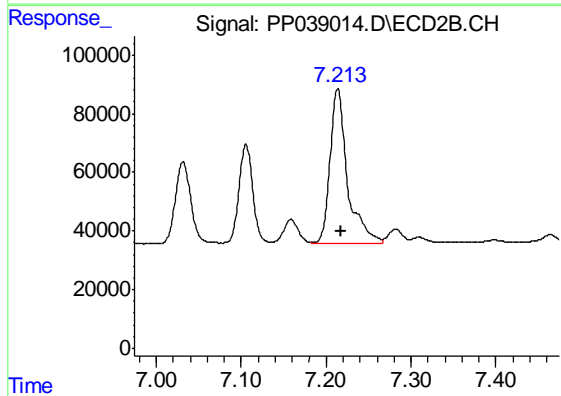
R.T.: 6.787 min
Delta R.T.: -0.004 min
Response: 558327
Conc: 502.94 ng/ml



#30 AR-1254-5

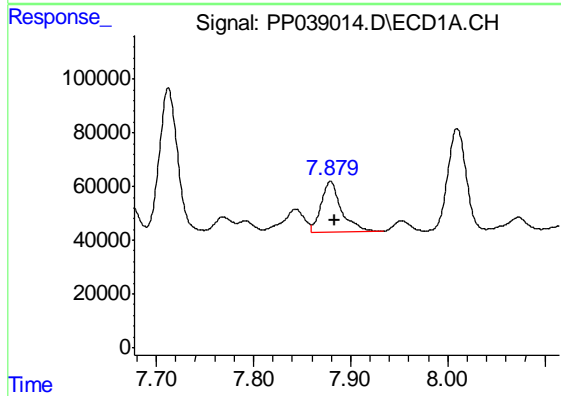
R.T.: 8.438 min
 Delta R.T.: -0.005 min
 Response: 487985
 Conc: 432.24 ng/ml

Instrument :
 ECD_P
 ClientSampleId :
 AR1254CCC500



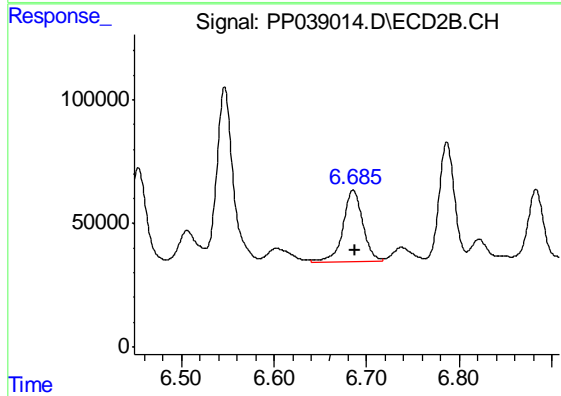
#30 AR-1254-5

R.T.: 7.214 min
 Delta R.T.: -0.004 min
 Response: 747357
 Conc: 492.86 ng/ml



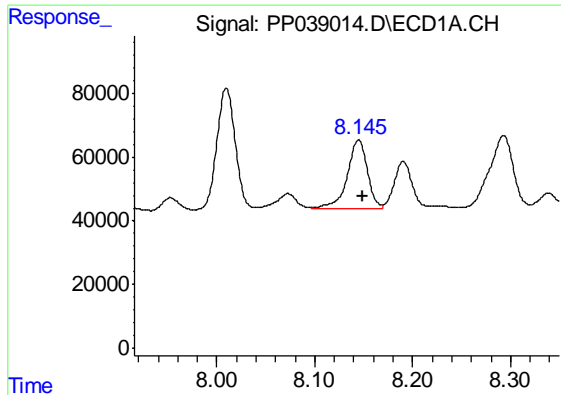
#31 AR-1260-1

R.T.: 7.879 min
 Delta R.T.: -0.004 min
 Response: 271858
 Conc: 285.21 ng/ml



#31 AR-1260-1

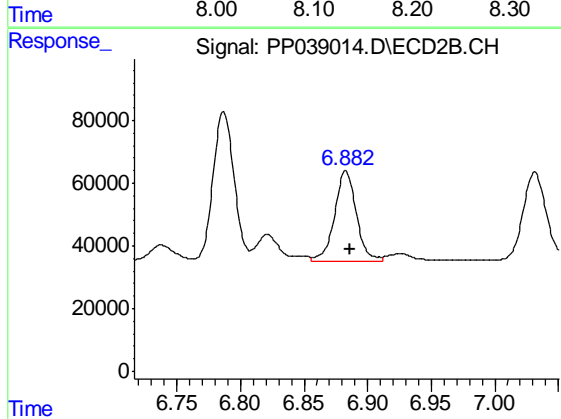
R.T.: 6.685 min
 Delta R.T.: -0.002 min
 Response: 438938
 Conc: 400.47 ng/ml



#32 AR-1260-2

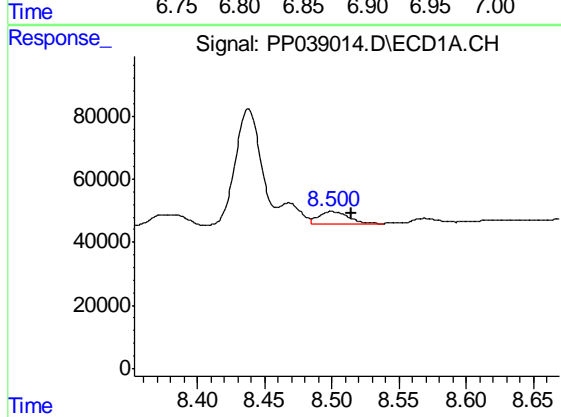
R.T.: 8.145 min
Delta R.T.: -0.004 min
Response: 308400
Conc: 256.05 ng/ml

Instrument :
ECD_P
ClientSampleId :
AR1254CCC500



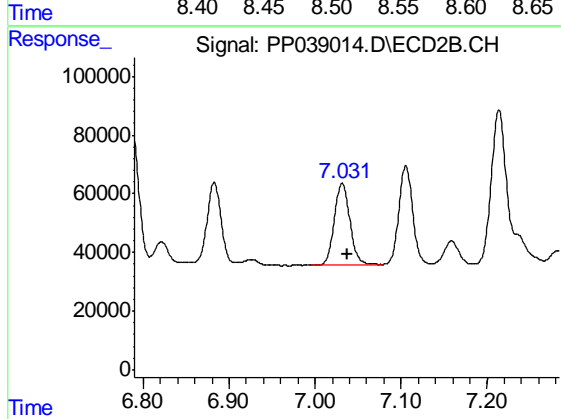
#32 AR-1260-2

R.T.: 6.883 min
Delta R.T.: -0.003 min
Response: 344186
Conc: 258.70 ng/ml



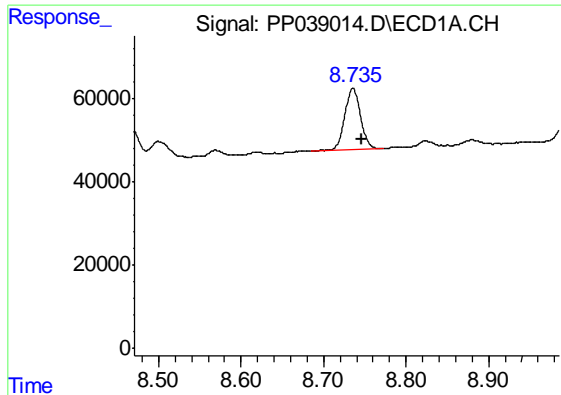
#33 AR-1260-3

R.T.: 8.500 min
Delta R.T.: -0.015 min
Response: 63237
Conc: 71.72 ng/ml



#33 AR-1260-3

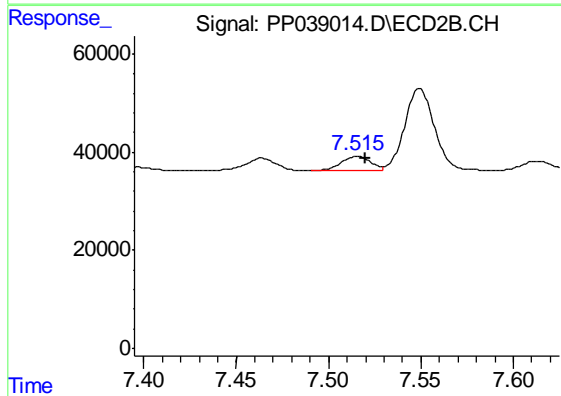
R.T.: 7.031 min
Delta R.T.: -0.006 min
Response: 357093
Conc: 258.41 ng/ml



#34 AR-1260-4

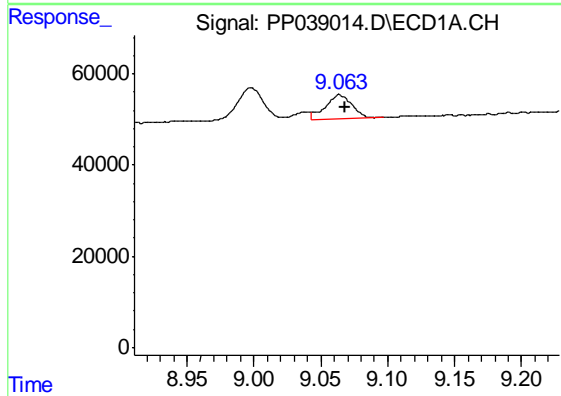
R.T.: 8.736 min
 Delta R.T.: -0.010 min
 Response: 201787
 Conc: 199.39 ng/ml

Instrument :
 ECD_P
 ClientSampleId :
 AR1254CCC500



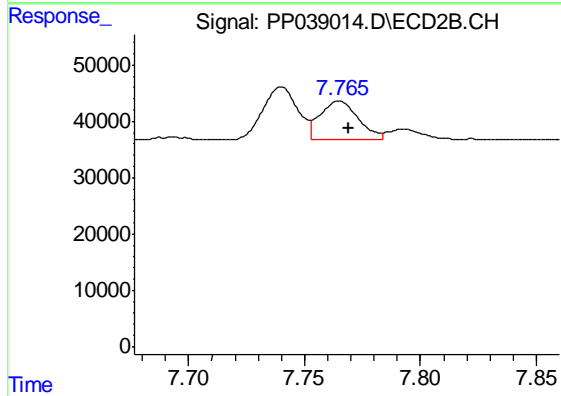
#34 AR-1260-4

R.T.: 7.516 min
 Delta R.T.: -0.004 min
 Response: 31042
 Conc: 29.53 ng/ml



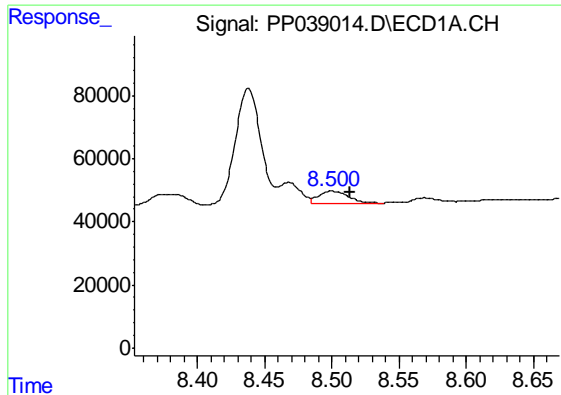
#35 AR-1260-5

R.T.: 9.064 min
 Delta R.T.: -0.004 min
 Response: 72736
 Conc: 33.56 ng/ml



#35 AR-1260-5

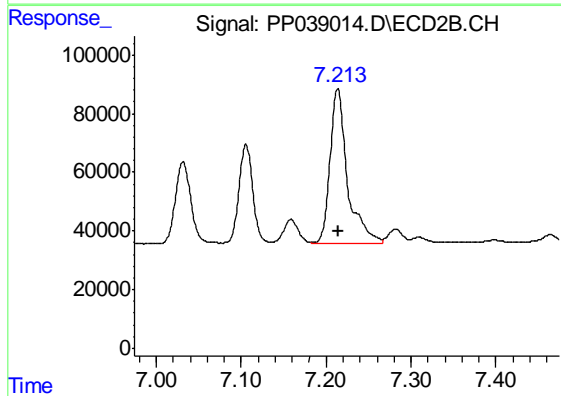
R.T.: 7.765 min
 Delta R.T.: -0.004 min
 Response: 78763
 Conc: 30.34 ng/ml



#36 AR-1262-1

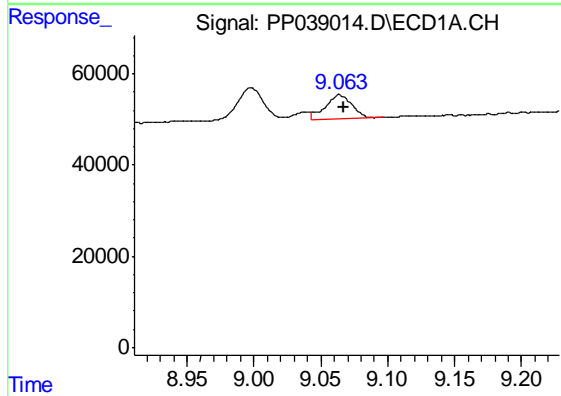
R.T.: 8.500 min
Delta R.T.: -0.013 min
Response: 63237
Conc: 47.35 ng/ml

Instrument :
ECD_P
ClientSampleId :
AR1254CCC500



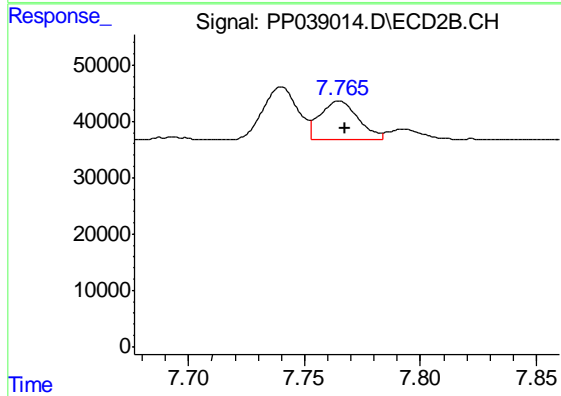
#36 AR-1262-1

R.T.: 7.214 min
Delta R.T.: -0.001 min
Response: 747357
Conc: 874.40 ng/ml



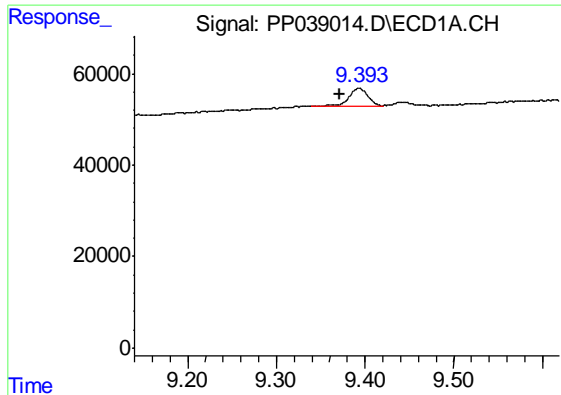
#37 AR-1262-2

R.T.: 9.064 min
Delta R.T.: -0.004 min
Response: 72736
Conc: 28.52 ng/ml



#37 AR-1262-2

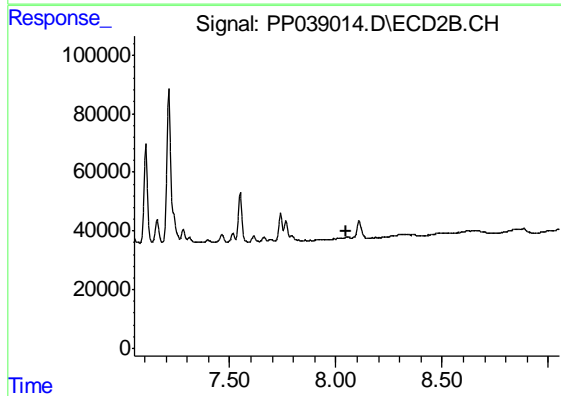
R.T.: 7.765 min
Delta R.T.: -0.002 min
Response: 78763
Conc: 26.37 ng/ml



#38 AR-1262-3

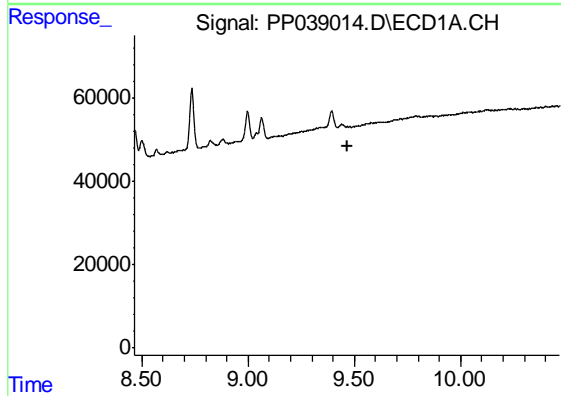
R.T.: 9.393 min
 Delta R.T.: 0.021 min
 Response: 55113
 Conc: 45.36 ng/ml

Instrument :
 ECD_P
 ClientSampleId :
 AR1254CCC500



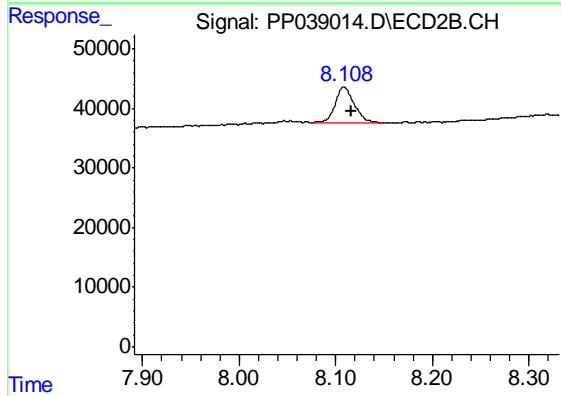
#38 AR-1262-3

R.T.: 0.000 min
 Exp R.T. : 8.052 min
 Response: 0
 Conc: N.D.



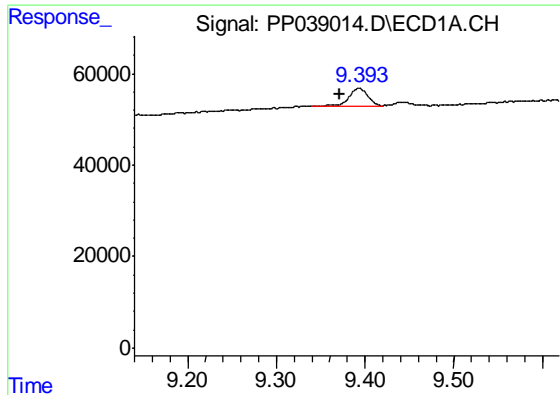
#39 AR-1262-4

R.T.: 0.000 min
 Exp R.T. : 9.466 min
 Response: 0
 Conc: N.D.



#39 AR-1262-4

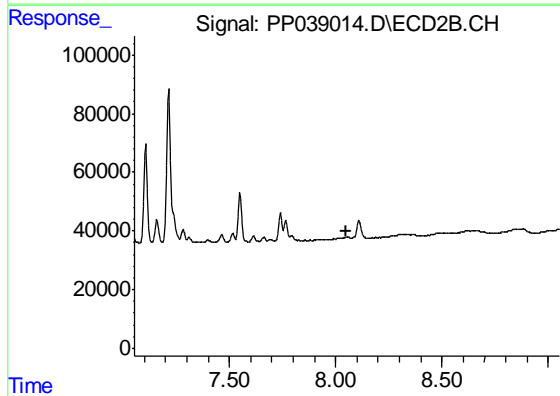
R.T.: 8.109 min
 Delta R.T.: -0.008 min
 Response: 82005
 Conc: 36.26 ng/ml



#41 AR-1268-1

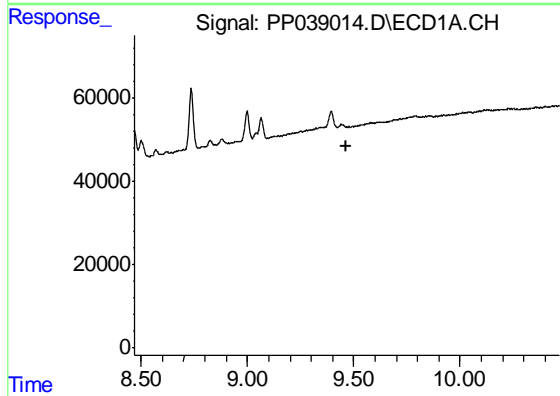
R.T.: 9.393 min
 Delta R.T.: 0.021 min
 Response: 55113
 Conc: 17.17 ng/ml

Instrument :
 ECD_P
 ClientSampleId :
 AR1254CCC500



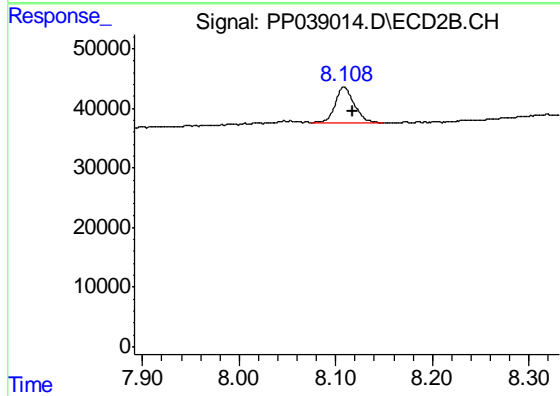
#41 AR-1268-1

R.T.: 0.000 min
 Exp R.T. : 8.052 min
 Response: 0
 Conc: N.D.



#42 AR-1268-2

R.T.: 0.000 min
 Exp R.T. : 9.468 min
 Response: 0
 Conc: N.D.



#42 AR-1268-2

R.T.: 8.109 min
 Delta R.T.: -0.009 min
 Response: 82005
 Conc: 24.33 ng/ml