

Data Path : Z:\pestpcbsrv\HPCHEM1\ECD\_P\Data\PP082922\  
 Data File : PP050957.D  
 Signal(s) : Signal #1: ECD1A.ch Signal #2: ECD2B.ch  
 Acq On : 29 Aug 2022 11:53  
 Operator : YP\AJ  
 Sample : N4374-06  
 Misc :  
 ALS Vial : 11 Sample Multiplier: 1

Instrument :  
 ECD\_P  
 ClientSampleId :  
 40066

Integration File signal 1: autoint1.e  
 Integration File signal 2: autoint2.e  
 Quant Time: Aug 30 08:56:14 2022  
 Quant Method : Z:\pestpcbsrv\HPCHEM1\ECD\_P\methods\PP082622.M  
 Quant Title : GC EXTRACTABLES  
 QLast Update : Fri Aug 26 17:33:33 2022  
 Response via : Initial Calibration  
 Integrator: ChemStation

Volume Inj. : 2 µl  
 Signal #1 Phase : ZB-MR1 Signal #2 Phase: ZB-MR2  
 Signal #1 Info : 30Mx0.32mmx 0.50µ Signal #2 Info : 30M x 0.32mm x 0.25µm

Compound	RT#1	RT#2	Resp#1	Resp#2	ng/ml	ng/ml
-----						
System Monitoring Compounds						
1) SA Tetrachlo...	4.462	3.719	34985852	33401207	18.774	18.955
2) SA Decachlor...	10.258	8.802	41006948	22342074	22.731	20.914
Target Compounds						
16) L4 AR-1242-1	5.633	4.821	16797055	16068875	339.886	400.575
17) L4 AR-1242-2	5.655	4.840	26882495	19155843	376.470	335.970
18) L4 AR-1242-3	5.718	5.019	16580839	10900656	362.124	342.263
19) L4 AR-1242-4	5.819	5.103	19125150	10105558	530.299	307.367 #
20) L4 AR-1242-5	6.555	5.630	24104165	18203196	603.249	526.398
26) L6 AR-1254-1	6.489	5.630	14176556	18203196	177.878	226.161 #
27) L6 AR-1254-2	6.713	5.778	19892113	4143059	168.459	59.385 #
28) L6 AR-1254-3	7.076	6.188	11212386	9150759	97.991	85.418
29) L6 AR-1254-4	7.362	6.416	15625925	12385664	226.906	247.918
30) L6 AR-1254-5	7.781	6.838	10433473	7742755	124.978	91.192 #
-----						

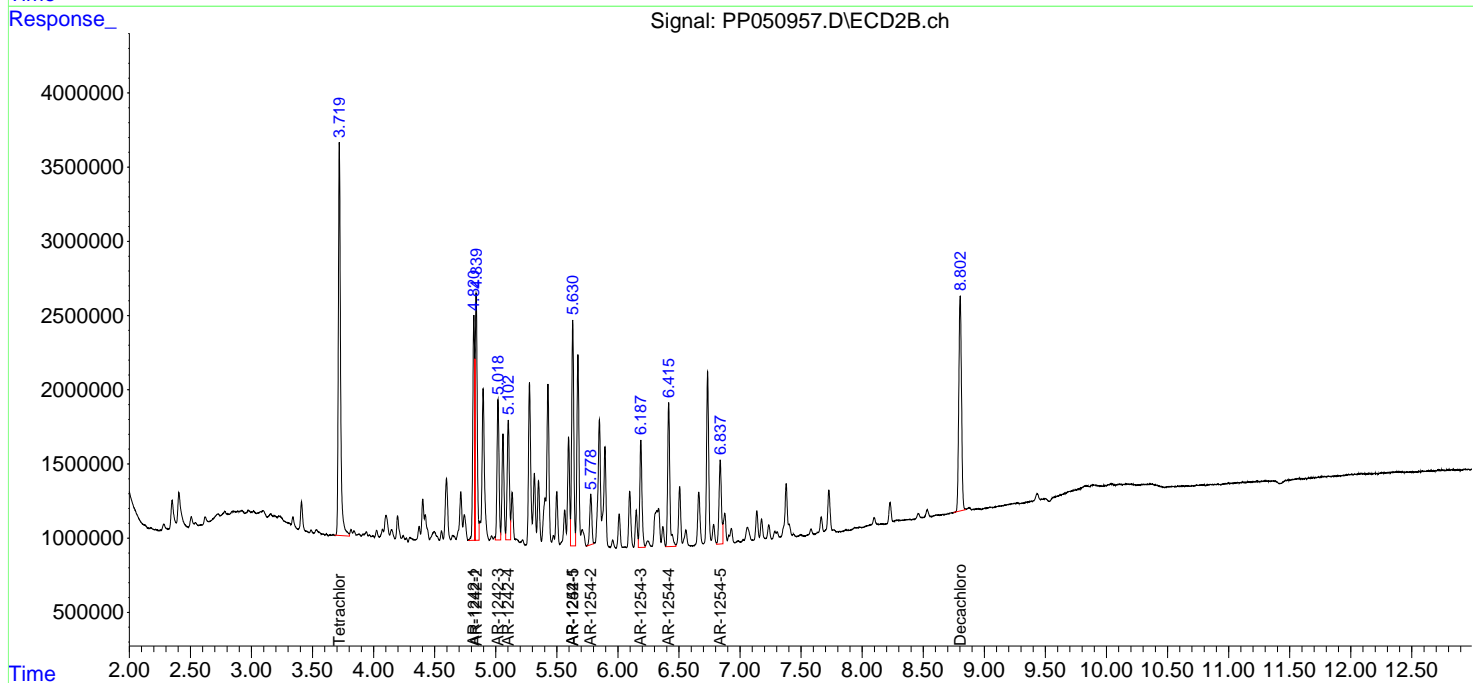
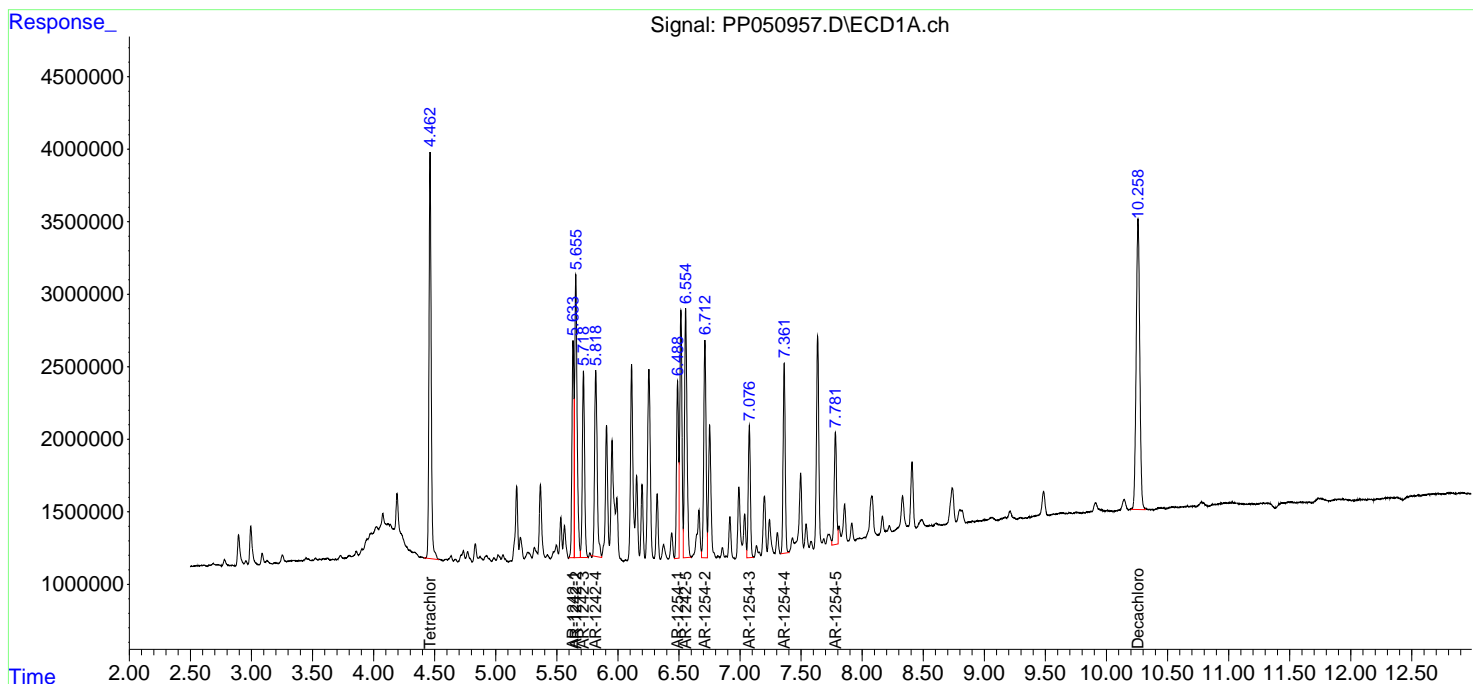
(f)=RT Delta > 1/2 Window (#)=Amounts differ by > 25% (m)=manual int.

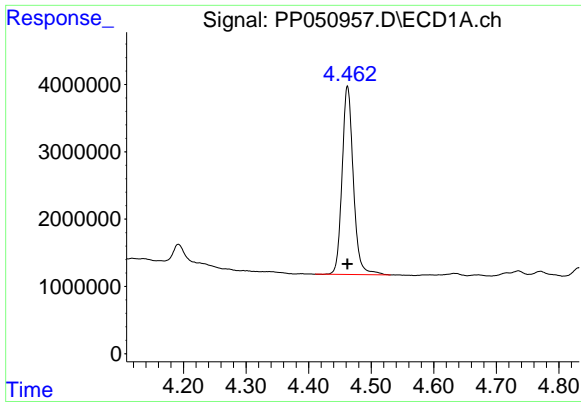
Data Path : Z:\pestpcbsrv\HPCHEM1\ECD\_P\Data\PP082922\  
 Data File : PP050957.D  
 Signal(s) : Signal #1: ECD1A.ch Signal #2: ECD2B.ch  
 Acq On : 29 Aug 2022 11:53  
 Operator : YP\AJ  
 Sample : N4374-06  
 Misc :  
 ALS Vial : 11 Sample Multiplier: 1

Instrument :  
 ECD\_P  
 ClientSampleId :  
 40066

Integration File signal 1: autoint1.e  
 Integration File signal 2: autoint2.e  
 Quant Time: Aug 30 08:56:14 2022  
 Quant Method : Z:\pestpcbsrv\HPCHEM1\ECD\_P\methods\PP082622.M  
 Quant Title : GC EXTRACTABLES  
 QLast Update : Fri Aug 26 17:33:33 2022  
 Response via : Initial Calibration  
 Integrator: ChemStation

Volume Inj. : 2 µl  
 Signal #1 Phase : ZB-MR1 Signal #2 Phase: ZB-MR2  
 Signal #1 Info : 30Mx0.32mmx 0.50µ Signal #2 Info : 30M x 0.32mm x 0.25µm

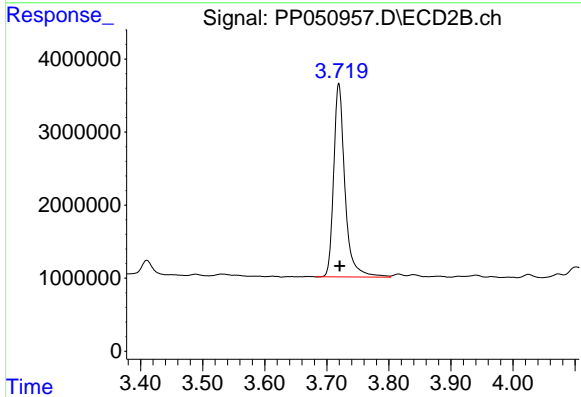




#1 Tetrachloro-m-xylene

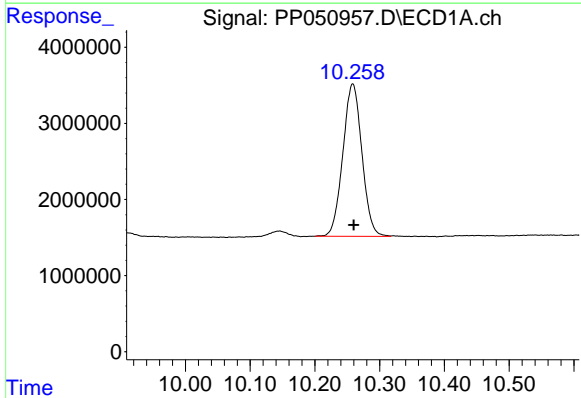
R.T.: 4.462 min  
 Delta R.T.: 0.000 min  
 Response: 34985852  
 Conc: 18.77 ng/ml

Instrument :  
 ECD\_P  
 ClientSampleId :  
 40066



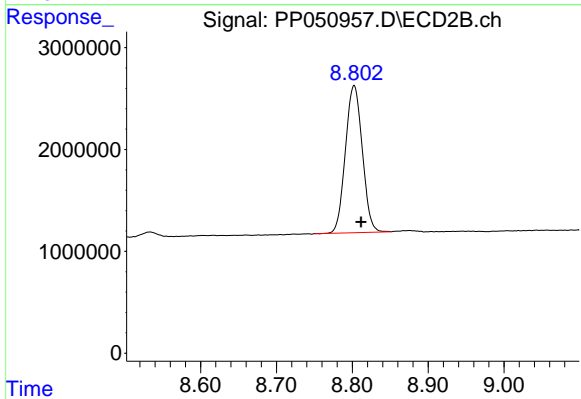
#1 Tetrachloro-m-xylene

R.T.: 3.719 min  
 Delta R.T.: -0.001 min  
 Response: 33401207  
 Conc: 18.95 ng/ml



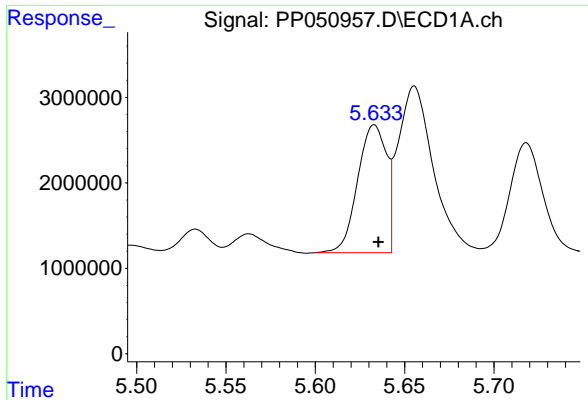
#2 Decachlorobiphenyl

R.T.: 10.258 min  
 Delta R.T.: -0.002 min  
 Response: 41006948  
 Conc: 22.73 ng/ml



#2 Decachlorobiphenyl

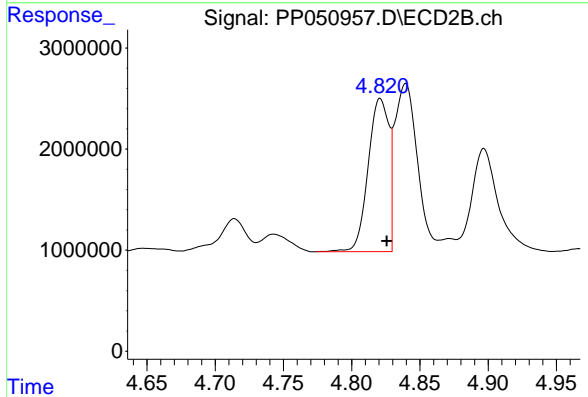
R.T.: 8.802 min  
 Delta R.T.: -0.009 min  
 Response: 22342074  
 Conc: 20.91 ng/ml



#16 AR-1242-1

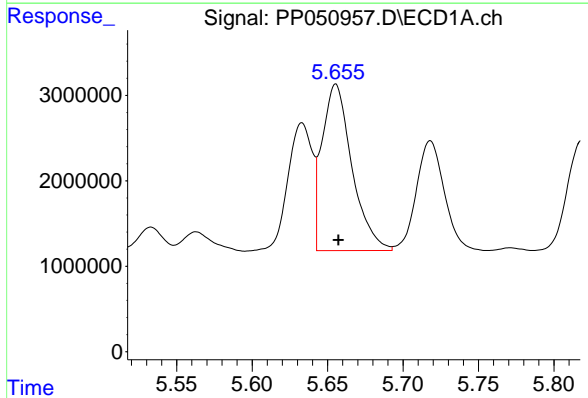
R.T.: 5.633 min  
 Delta R.T.: -0.002 min  
 Response: 16797055  
 Conc: 339.89 ng/ml

Instrument :  
 ECD\_P  
 ClientSampleId :  
 40066



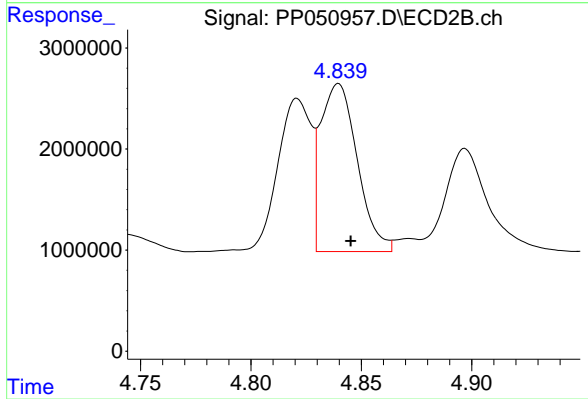
#16 AR-1242-1

R.T.: 4.821 min  
 Delta R.T.: -0.005 min  
 Response: 16068875  
 Conc: 400.57 ng/ml



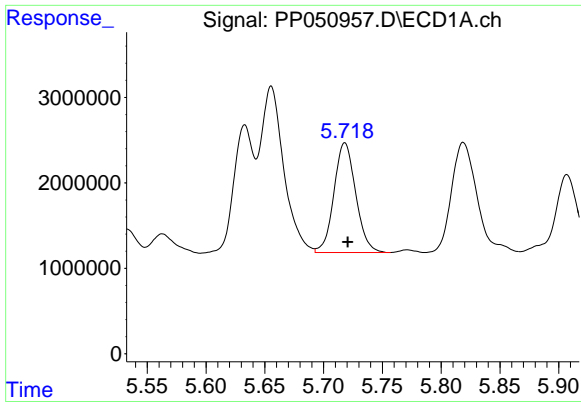
#17 AR-1242-2

R.T.: 5.655 min  
 Delta R.T.: -0.002 min  
 Response: 26882495  
 Conc: 376.47 ng/ml



#17 AR-1242-2

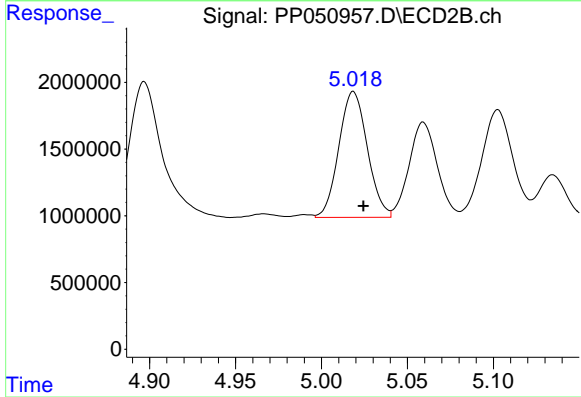
R.T.: 4.840 min  
 Delta R.T.: -0.005 min  
 Response: 19155843  
 Conc: 335.97 ng/ml



#18 AR-1242-3

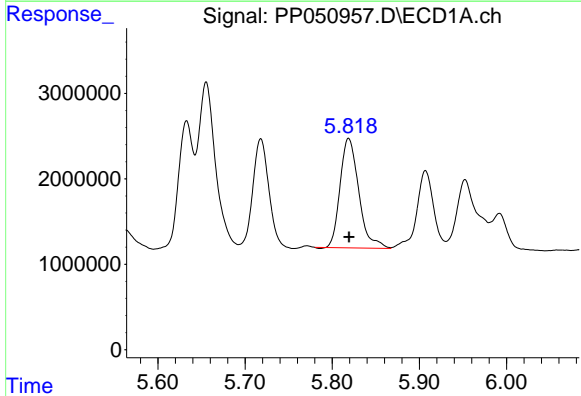
R.T.: 5.718 min  
 Delta R.T.: -0.003 min  
 Response: 16580839  
 Conc: 362.12 ng/ml

Instrument :  
 ECD\_P  
 ClientSampleId :  
 40066



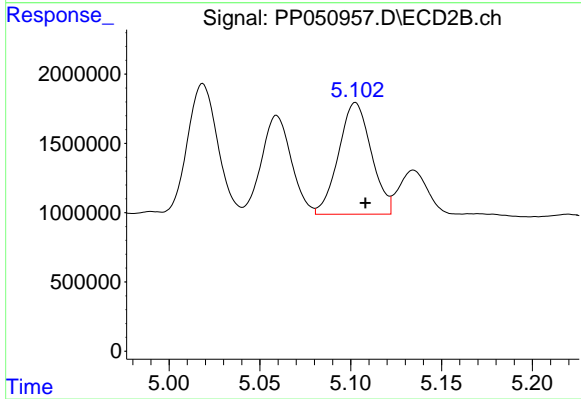
#18 AR-1242-3

R.T.: 5.019 min  
 Delta R.T.: -0.006 min  
 Response: 10900656  
 Conc: 342.26 ng/ml



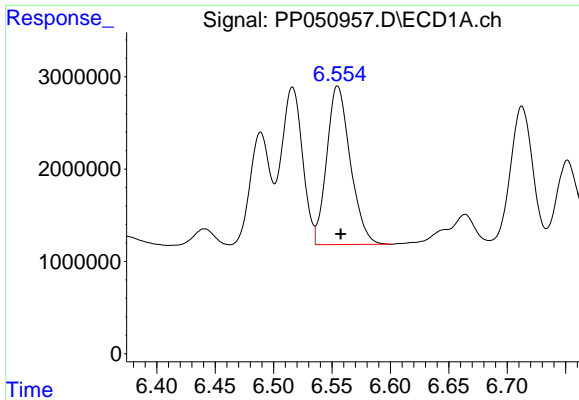
#19 AR-1242-4

R.T.: 5.819 min  
 Delta R.T.: 0.000 min  
 Response: 19125150  
 Conc: 530.30 ng/ml



#19 AR-1242-4

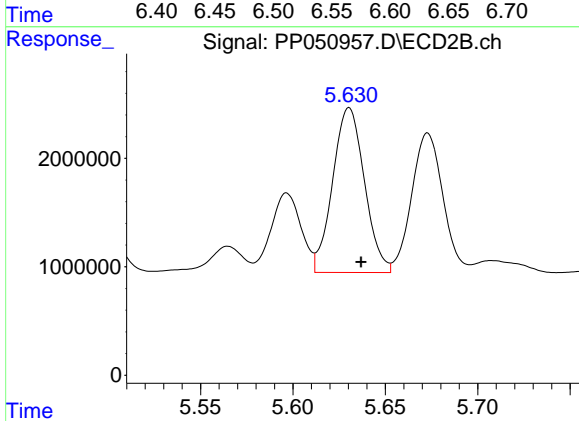
R.T.: 5.103 min  
 Delta R.T.: -0.005 min  
 Response: 10105558  
 Conc: 307.37 ng/ml



#20 AR-1242-5

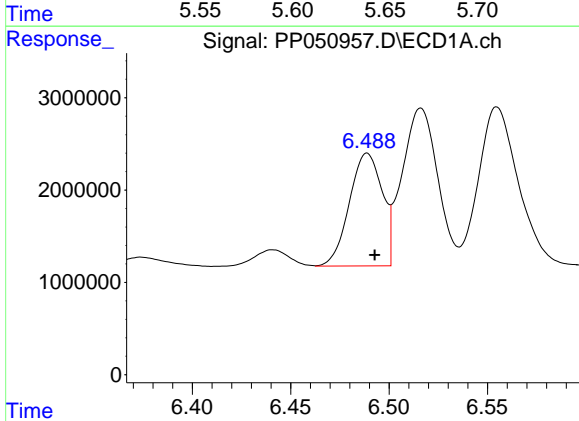
R.T.: 6.555 min  
 Delta R.T.: -0.003 min  
 Response: 24104165  
 Conc: 603.25 ng/ml

Instrument :  
 ECD\_P  
 ClientSampleId :  
 40066



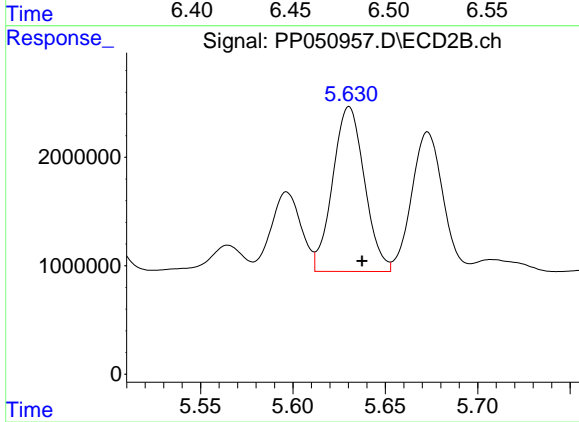
#20 AR-1242-5

R.T.: 5.630 min  
 Delta R.T.: -0.006 min  
 Response: 18203196  
 Conc: 526.40 ng/ml



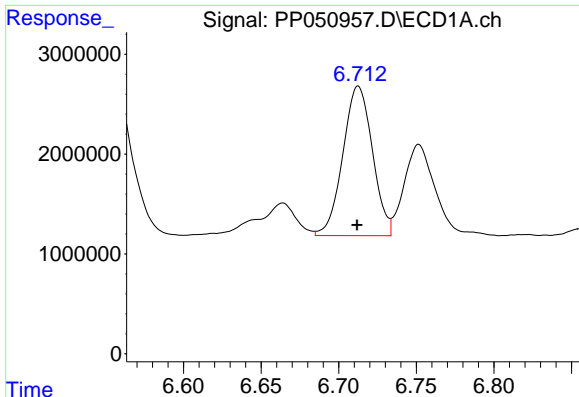
#26 AR-1254-1

R.T.: 6.489 min  
 Delta R.T.: -0.004 min  
 Response: 14176556  
 Conc: 177.88 ng/ml



#26 AR-1254-1

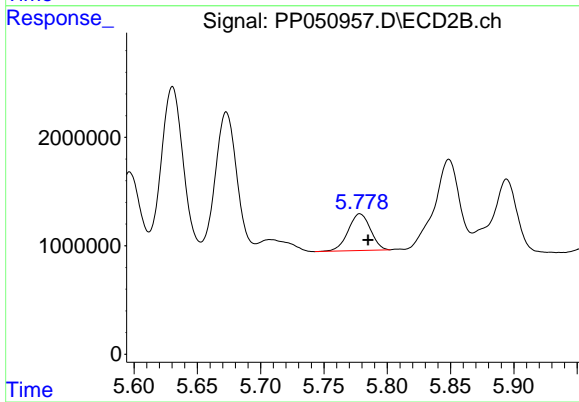
R.T.: 5.630 min  
 Delta R.T.: -0.007 min  
 Response: 18203196  
 Conc: 226.16 ng/ml



#27 AR-1254-2

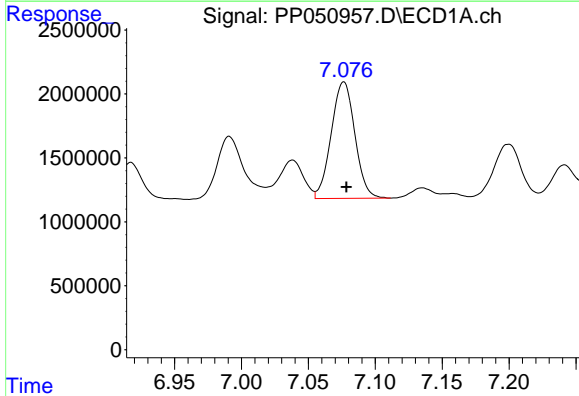
R.T.: 6.713 min  
 Delta R.T.: 0.000 min  
 Response: 19892113  
 Conc: 168.46 ng/ml

Instrument :  
 ECD\_P  
 ClientSampleId :  
 40066



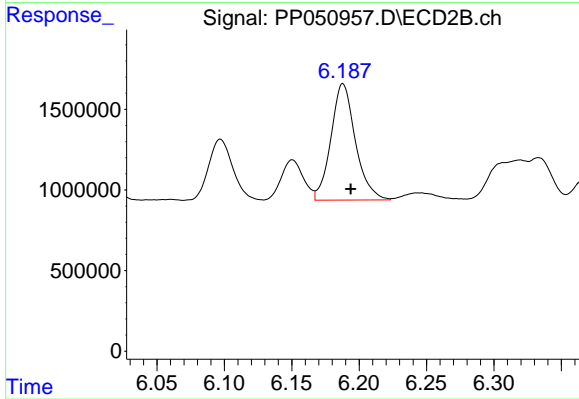
#27 AR-1254-2

R.T.: 5.778 min  
 Delta R.T.: -0.006 min  
 Response: 4143059  
 Conc: 59.38 ng/ml



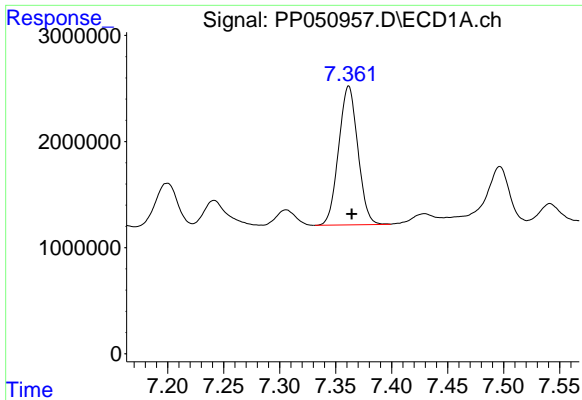
#28 AR-1254-3

R.T.: 7.076 min  
 Delta R.T.: -0.002 min  
 Response: 11212386  
 Conc: 97.99 ng/ml



#28 AR-1254-3

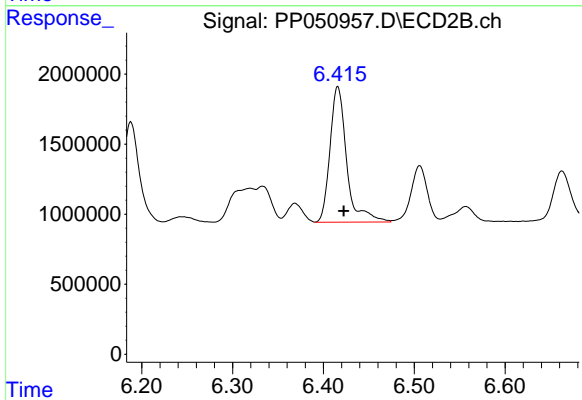
R.T.: 6.188 min  
 Delta R.T.: -0.006 min  
 Response: 9150759  
 Conc: 85.42 ng/ml



#29 AR-1254-4

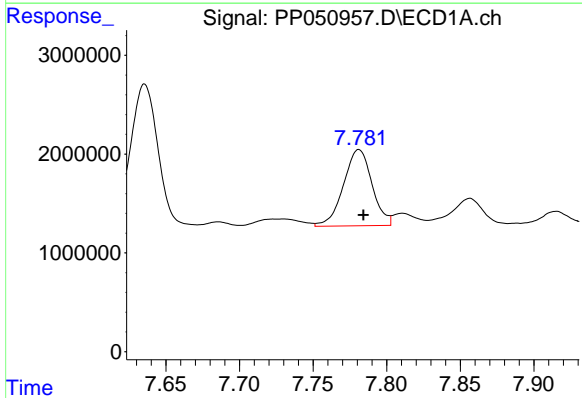
R.T.: 7.362 min  
Delta R.T.: -0.003 min  
Response: 15625925  
Conc: 226.91 ng/ml

Instrument :  
ECD\_P  
ClientSampleId :  
40066



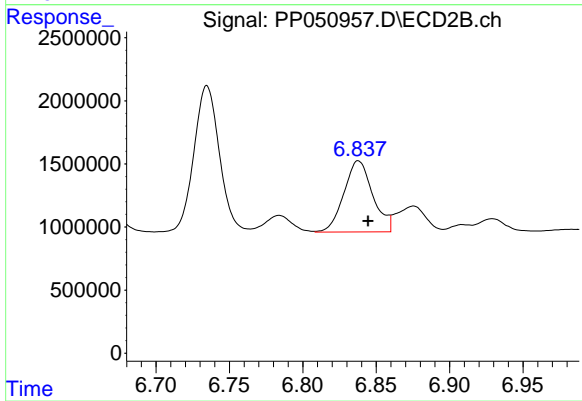
#29 AR-1254-4

R.T.: 6.416 min  
Delta R.T.: -0.006 min  
Response: 12385664  
Conc: 247.92 ng/ml



#30 AR-1254-5

R.T.: 7.781 min  
Delta R.T.: -0.003 min  
Response: 10433473  
Conc: 124.98 ng/ml



#30 AR-1254-5

R.T.: 6.838 min  
Delta R.T.: -0.007 min  
Response: 7742755  
Conc: 91.19 ng/ml