

Data Path : Z:\pestpcbsrv\HPCHEM1\ECD\_P\Data\PP083022\  
 Data File : PP051027.D  
 Signal(s) : Signal #1: ECD1A.ch Signal #2: ECD2B.ch  
 Acq On : 30 Aug 2022 14:33  
 Operator : YP\AJ  
 Sample : N4423-01  
 Misc :  
 ALS Vial : 12 Sample Multiplier: 1

Instrument :  
 ECD\_P  
 ClientSampleId :  
 WC-1

Integration File signal 1: autoint1.e  
 Integration File signal 2: autoint2.e  
 Quant Time: Aug 30 16:45:09 2022  
 Quant Method : Z:\pestpcbsrv\HPCHEM1\ECD\_P\methods\PP082622.M  
 Quant Title : GC EXTRACTABLES  
 QLast Update : Fri Aug 26 17:33:33 2022  
 Response via : Initial Calibration  
 Integrator: ChemStation

Volume Inj. : 2 µl  
 Signal #1 Phase : ZB-MR1 Signal #2 Phase: ZB-MR2  
 Signal #1 Info : 30Mx0.32mmx 0.50µ Signal #2 Info : 30M x 0.32mm x 0.25µm

Compound	RT#1	RT#2	Resp#1	Resp#2	ng/ml	ng/ml
-----						
System Monitoring Compounds						
1) SA Tetrachlo...	4.465	3.721	27313434	32819744	14.657	18.625 #
2) SA Decachlor...	10.269	8.806	33287943	20136149	18.453	18.849

Target Compounds

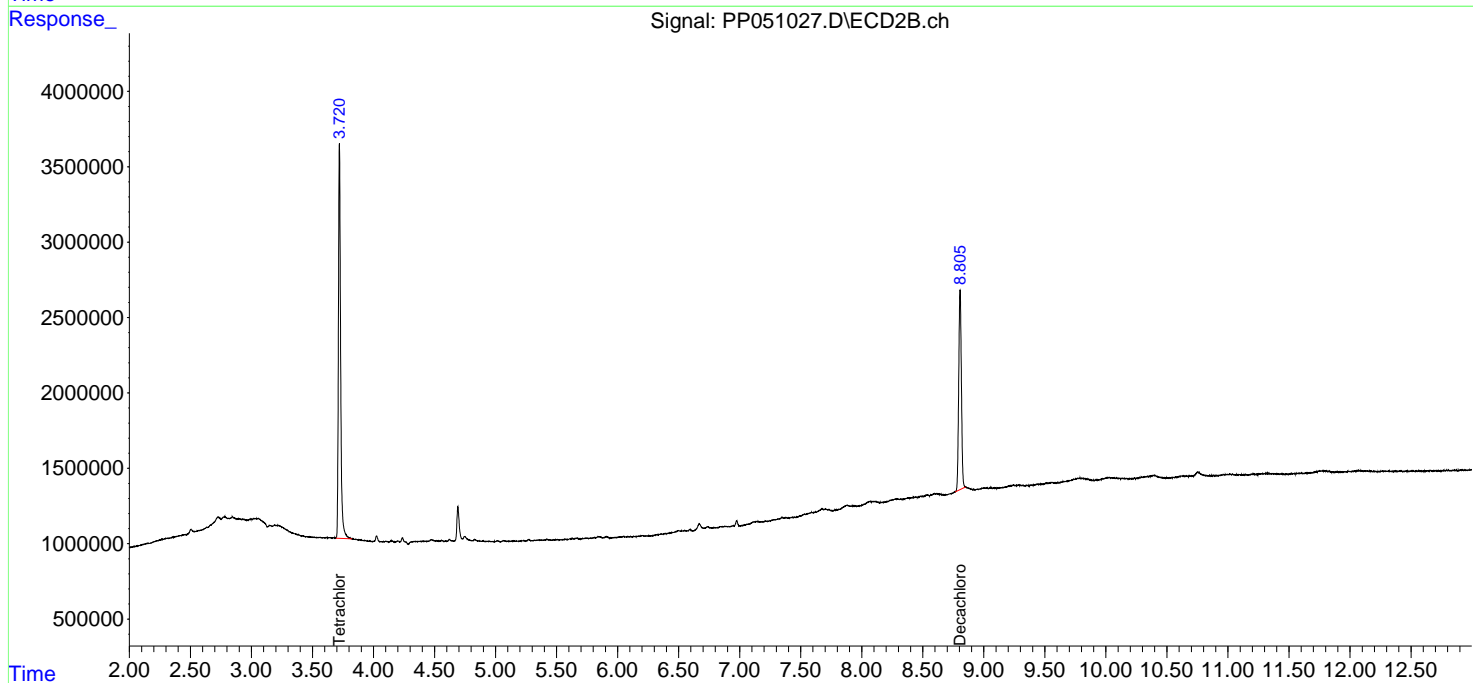
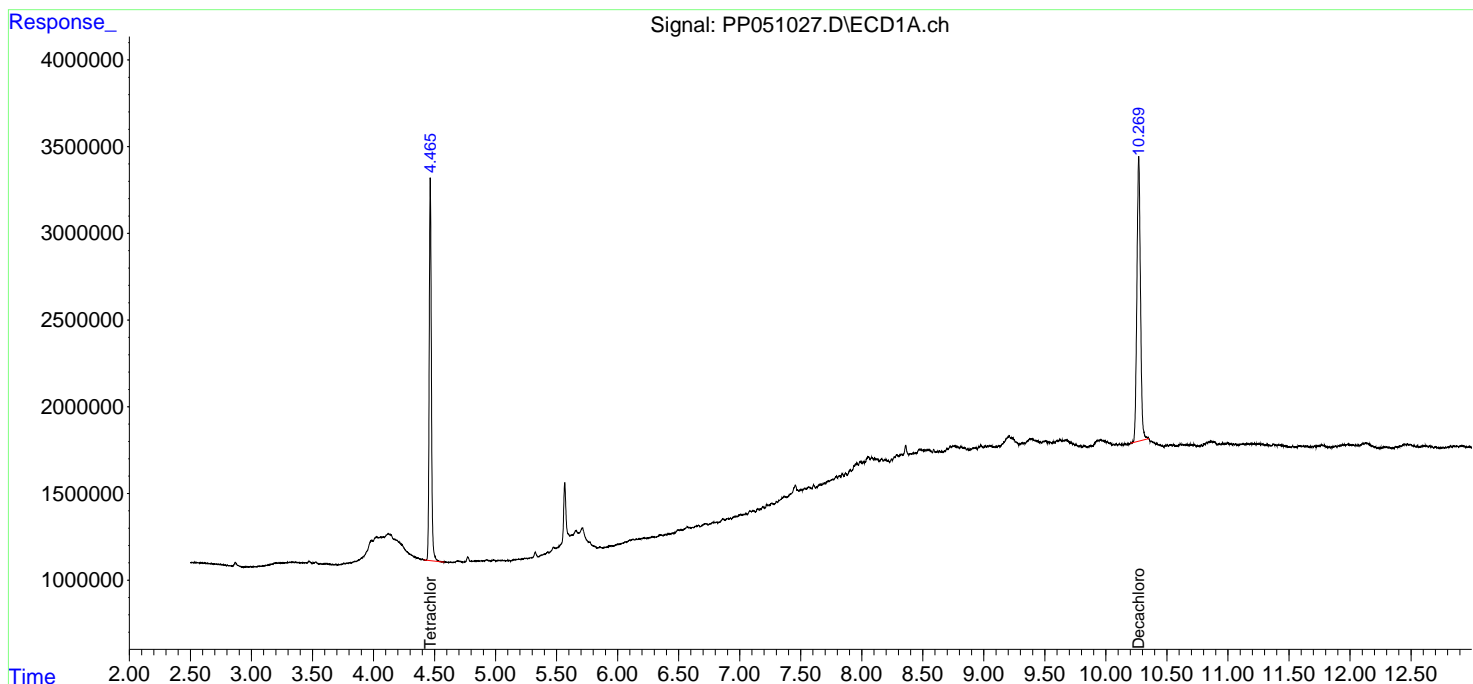
(f)=RT Delta > 1/2 Window (#)=Amounts differ by > 25% (m)=manual int.

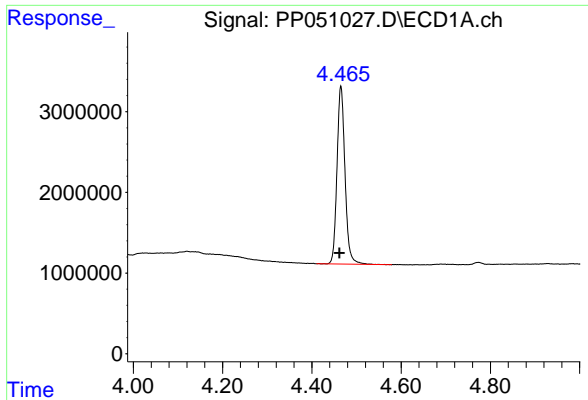
Data Path : Z:\pestpcbsrv\HPCHEM1\ECD\_P\Data\PP083022\  
 Data File : PP051027.D  
 Signal(s) : Signal #1: ECD1A.ch Signal #2: ECD2B.ch  
 Acq On : 30 Aug 2022 14:33  
 Operator : YP\AJ  
 Sample : N4423-01  
 Misc :  
 ALS Vial : 12 Sample Multiplier: 1

Instrument :  
 ECD\_P  
 ClientSampleId :  
 WC-1

Integration File signal 1: autoint1.e  
 Integration File signal 2: autoint2.e  
 Quant Time: Aug 30 16:45:09 2022  
 Quant Method : Z:\pestpcbsrv\HPCHEM1\ECD\_P\methods\PP082622.M  
 Quant Title : GC EXTRACTABLES  
 QLast Update : Fri Aug 26 17:33:33 2022  
 Response via : Initial Calibration  
 Integrator: ChemStation

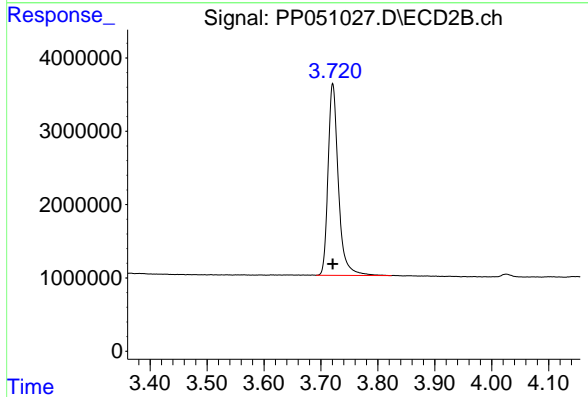
Volume Inj. : 2 µl  
 Signal #1 Phase : ZB-MR1 Signal #2 Phase: ZB-MR2  
 Signal #1 Info : 30Mx0.32mmx 0.50µ Signal #2 Info : 30M x 0.32mm x 0.25µm



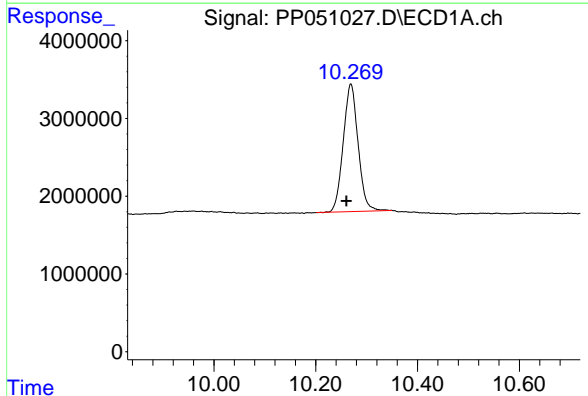


#1 Tetrachloro-m-xylene  
 R.T.: 4.465 min  
 Delta R.T.: 0.003 min  
 Response: 27313434  
 Conc: 14.66 ng/ml

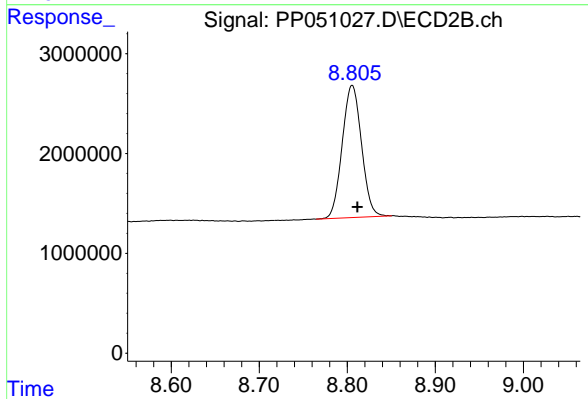
Instrument :  
 ECD\_P  
 ClientSampleId :  
 WC-1



#1 Tetrachloro-m-xylene  
 R.T.: 3.721 min  
 Delta R.T.: 0.000 min  
 Response: 32819744  
 Conc: 18.62 ng/ml



#2 Decachlorobiphenyl  
 R.T.: 10.269 min  
 Delta R.T.: 0.009 min  
 Response: 33287943  
 Conc: 18.45 ng/ml



#2 Decachlorobiphenyl  
 R.T.: 8.806 min  
 Delta R.T.: -0.006 min  
 Response: 20136149  
 Conc: 18.85 ng/ml