

Data Path : Z:\pestpcbsrv\HPCHEM1\ECD_P\Data\PP083123\
 Data File : PP059683.D
 Signal(s) : Signal #1: ECD1A.ch Signal #2: ECD2B.ch
 Acq On : 31 Aug 2023 22:42
 Operator : YP\AJ
 Sample : AR1248CCC500
 Misc :
 ALS Vial : 5 Sample Multiplier: 1

Instrument :
 ECD_P
 ClientSampleId :

Integration File signal 1: autoint1.e
 Integration File signal 2: autoint2.e
 Quant Time: Sep 01 02:51:02 2023
 Quant Method : Z:\pestpcbsrv\HPCHEM1\ECD_P\methods\PP082323.M
 Quant Title : GC EXTRACTABLES
 QLast Update : Thu Aug 24 01:16:04 2023
 Response via : Initial Calibration
 Integrator: ChemStation

Volume Inj. : 2 µl
 Signal #1 Phase : ZB-MR1 Signal #2 Phase: ZB-MR2
 Signal #1 Info : 30Mx0.32mmx 0.50µ Signal #2 Info : 30M x 0.32mm x 0.25µm

Compound	RT#1	RT#2	Resp#1	Resp#2	ng/ml	ng/ml
System Monitoring Compounds						
1) SA Tetrachlo...	4.411	3.638	52041325	78159540	44.030	40.456
2) SA Decachlor...	10.194	8.658	41297296	55406950	52.816	40.145
Target Compounds						
3) L1 AR-1016-1	5.586	4.726	11442129	14912677	297.615	251.083
4) L1 AR-1016-2	5.609	4.745	13846581	15989678	248.579	182.589 #
5) L1 AR-1016-3	5.671	4.920	6811555	10387052	193.230	230.898
6) L1 AR-1016-4	5.768	4.962	7565322	21566064	265.870	554.582 #
7) L1 AR-1016-5	6.066	5.175	19347628	25773734	637.320	511.622
8) L2 AR-1221-1	4.615	3.855	103829	51984	7.017	2.236 #
9) L2 AR-1221-2	4.719	3.937	927356	1127960	84.774	67.852
10) L2 AR-1221-3	4.784	4.013	962040	1254938	28.429	24.333
11) L3 AR-1232-1	4.784	4.013	962040	1254938	34.209	30.024
12) L3 AR-1232-2	5.316	4.745	5180906	15989678	340.523	400.424
13) L3 AR-1232-3	5.609	4.920	13846581	10387052	538.231	515.629
14) L3 AR-1232-4	5.768	5.004	7565322	22778614	594.821	1165.126 #
15) L3 AR-1232-5	5.861	5.175	17430854	25773734	1587.242	1198.056
16) L4 AR-1242-1	5.586	4.726	11442129	14912677	340.215	290.514
17) L4 AR-1242-2	5.609	4.745	13846581	15989678	284.032	210.685 #
18) L4 AR-1242-3	5.671	4.920	6811555	10387052	219.823	268.432
19) L4 AR-1242-4	5.768	5.004	7565322	22778614	303.531	558.365 #
20) L4 AR-1242-5	6.510	5.530	19404115	34025785	748.261	725.003
21) L5 AR-1248-1	5.586	4.726	11442129	14912677	462.496	379.198
22) L5 AR-1248-2	5.861	4.962	17430854	21566064	453.206	362.484
23) L5 AR-1248-3	6.066	5.004	19347628	22778614	457.954	372.445
24) L5 AR-1248-4	6.472	5.175	19949609	25773734	459.279	353.050
25) L5 AR-1248-5	6.510	5.571	19404115	23153687	458.596	355.515
26) L6 AR-1254-1	6.443	5.530	15893649	34025785	327.650	331.540
27) L6 AR-1254-2	6.667	5.678	20403673	10047935	282.898	114.598 #
28) L6 AR-1254-3	7.032	6.082	11685881	15931414	164.775	113.614 #
29) L6 AR-1254-4	7.319	6.313	6467640	10149446	146.203	127.992
30) L6 AR-1254-5	7.739	6.731	1351745	3066630	29.508	25.481
31) L7 AR-1260-1	7.198	6.225	1258740	7545258	22.494	78.015 #
32) L7 AR-1260-2	7.453	6.402	1533686	1733893	26.337	15.678 #
33) L7 AR-1260-3	7.818	6.553	75744	1768204	1.927	16.681 #
34) L7 AR-1260-4	8.027	7.028	687758	175550	15.886	2.095 #
35) L7 AR-1260-5	8.361	7.271	370222	444414	4.948	2.543 #
36) L8 AR-1262-1	7.818	6.822	75744	153721	1.297	2.793 #
37) L8 AR-1262-2	8.361	7.028	370222	175550	4.396	1.549 #
38) L8 AR-1262-3	8.695	7.560	254180	238313	4.175	2.854 #
39) L8 AR-1262-4	8.771	7.618	23121	388678	0.474	2.631 #
40) L8 AR-1262-5	9.451f	8.135	319770	17273	10.946	0.280 #
41) L9 AR-1268-1	8.695f	7.560	254180	238313	2.307	1.019 #

Data Path : Z:\pestpcbsrv\HPCHEM1\ECD_P\Data\PP083123\
 Data File : PP059683.D
 Signal(s) : Signal #1: ECD1A.ch Signal #2: ECD2B.ch
 Acq On : 31 Aug 2023 22:42
 Operator : YP\AJ
 Sample : AR1248CCC500
 Misc :
 ALS Vial : 5 Sample Multiplier: 1

Instrument :
 ECD_P
 ClientSampleId :

Integration File signal 1: autoint1.e
 Integration File signal 2: autoint2.e
 Quant Time: Sep 01 02:51:02 2023
 Quant Method : Z:\pestpcbsrv\HPCHEM1\ECD_P\methods\PP082323.M
 Quant Title : GC EXTRACTABLES
 QLast Update : Thu Aug 24 01:16:04 2023
 Response via : Initial Calibration
 Integrator: ChemStation

Volume Inj. : 2 µl
 Signal #1 Phase : ZB-MR1 Signal #2 Phase: ZB-MR2
 Signal #1 Info : 30Mx0.32mmx 0.50µ Signal #2 Info : 30M x 0.32mm x 0.25µm

	Compound	RT#1	RT#2	Resp#1	Resp#2	ng/ml	ng/ml
42)	L9 AR-1268-2	8.771	7.618	23121	388678	0.236	1.848 #
43)	L9 AR-1268-3	8.991	7.826	308396	107152	3.375	0.557 #
44)	L9 AR-1268-4	9.451f	8.135	319770	17273	9.993	0.250 #
45)	L9 AR-1268-5	9.859	8.407	95001	359560	0.387	0.708 #

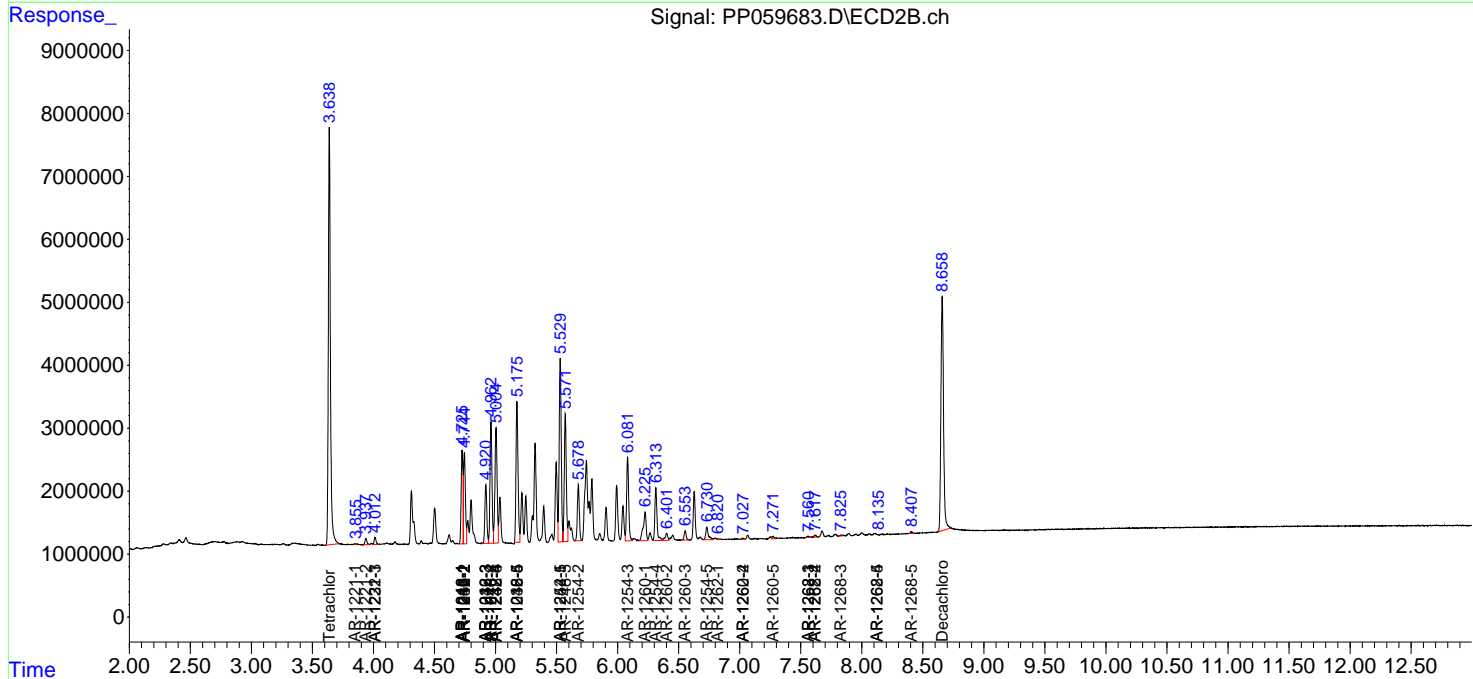
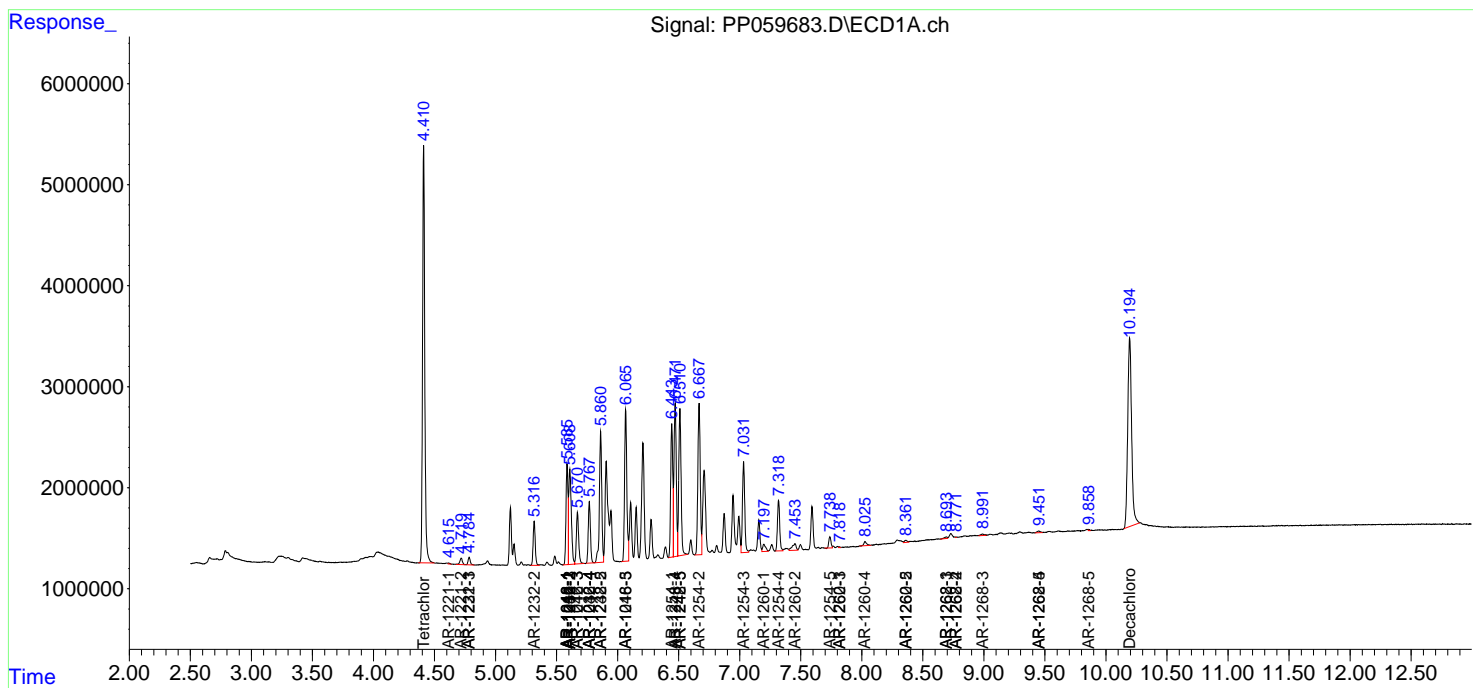
(f)=RT Delta > 1/2 Window (#)=Amounts differ by > 25% (m)=manual int.

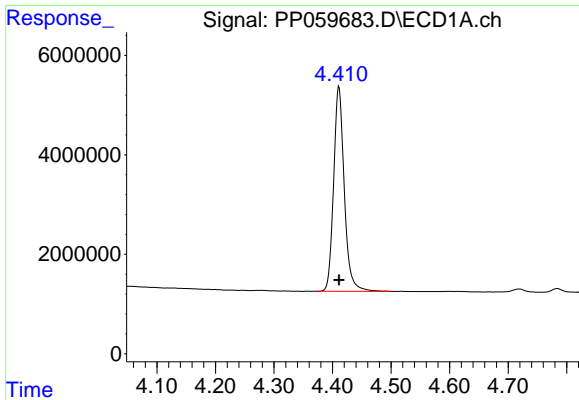
Data Path : Z:\pestpcbsrv\HPCHEM1\ECD_P\Data\PP083123\
 Data File : PP059683.D
 Signal(s) : Signal #1: ECD1A.ch Signal #2: ECD2B.ch
 Acq On : 31 Aug 2023 22:42
 Operator : YP\AJ
 Sample : AR1248CCC500
 Misc :
 ALS Vial : 5 Sample Multiplier: 1

Instrument :
 ECD_P
 ClientSampleId :

Integration File signal 1: autoint1.e
 Integration File signal 2: autoint2.e
 Quant Time: Sep 01 02:51:02 2023
 Quant Method : Z:\pestpcbsrv\HPCHEM1\ECD_P\methods\PP082323.M
 Quant Title : GC EXTRACTABLES
 QLast Update : Thu Aug 24 01:16:04 2023
 Response via : Initial Calibration
 Integrator: ChemStation

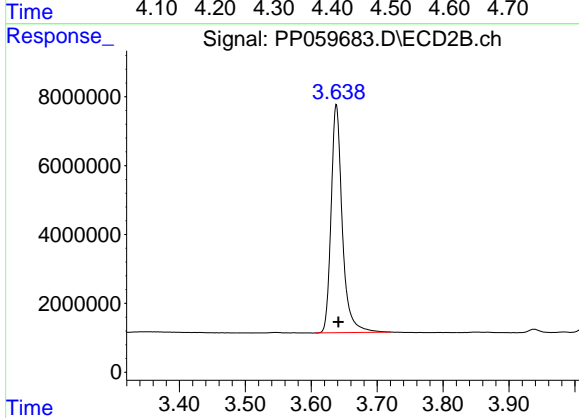
Volume Inj. : 2 µl
 Signal #1 Phase : ZB-MR1 Signal #2 Phase: ZB-MR2
 Signal #1 Info : 30Mx0.32mmx 0.50µ Signal #2 Info : 30M x 0.32mm x 0.25µm



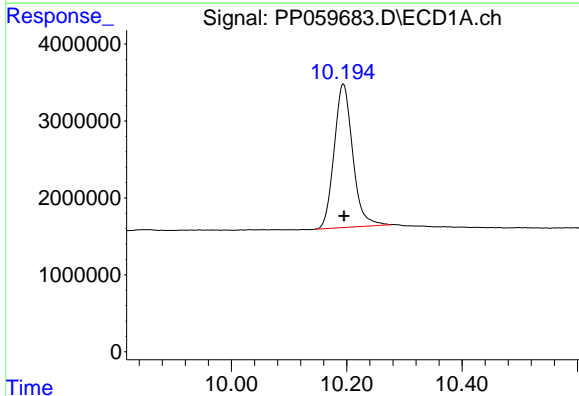


#1 Tetrachloro-m-xylene
 R.T.: 4.411 min
 Delta R.T.: 0.000 min
 Response: 52041325
 Conc: 44.03 ng/ml

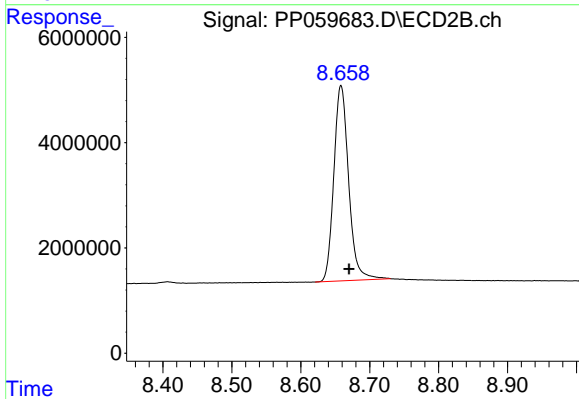
Instrument :
 ECD_P
 ClientSampleId :



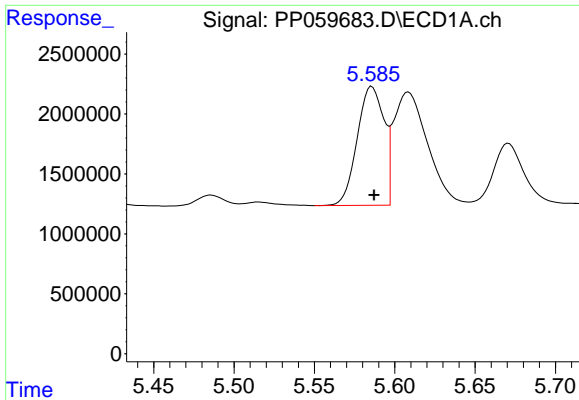
#1 Tetrachloro-m-xylene
 R.T.: 3.638 min
 Delta R.T.: -0.003 min
 Response: 78159540
 Conc: 40.46 ng/ml



#2 Decachlorobiphenyl
 R.T.: 10.194 min
 Delta R.T.: -0.001 min
 Response: 41297296
 Conc: 52.82 ng/ml



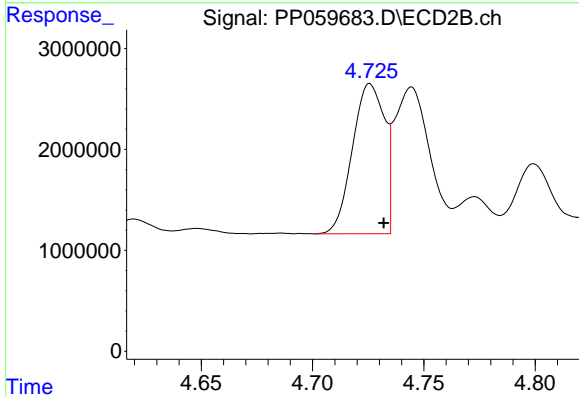
#2 Decachlorobiphenyl
 R.T.: 8.658 min
 Delta R.T.: -0.012 min
 Response: 55406950
 Conc: 40.14 ng/ml



#3 AR-1016-1

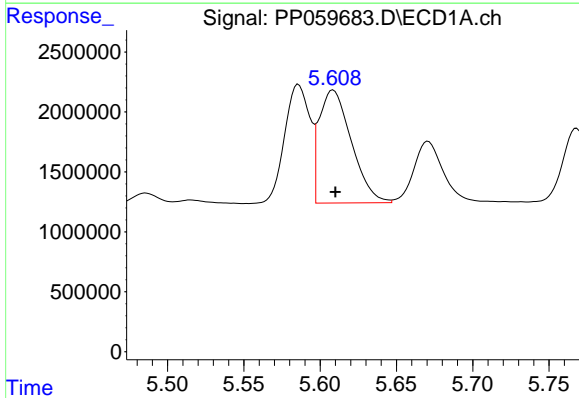
R.T.: 5.586 min
 Delta R.T.: -0.001 min
 Response: 11442129
 Conc: 297.62 ng/ml

Instrument :
 ECD_P
 ClientSampleId :



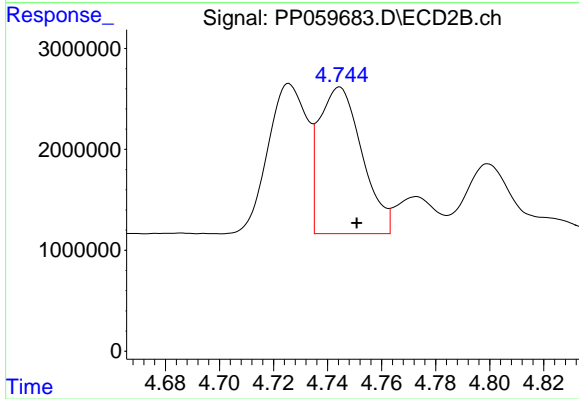
#3 AR-1016-1

R.T.: 4.726 min
 Delta R.T.: -0.006 min
 Response: 14912677
 Conc: 251.08 ng/ml



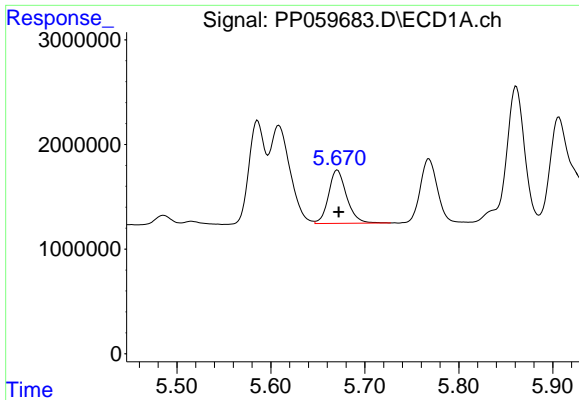
#4 AR-1016-2

R.T.: 5.609 min
 Delta R.T.: -0.001 min
 Response: 13846581
 Conc: 248.58 ng/ml



#4 AR-1016-2

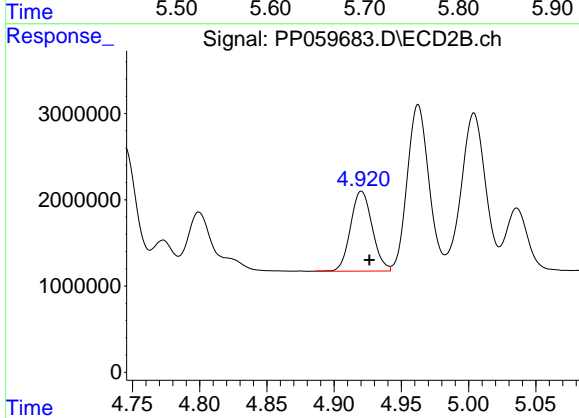
R.T.: 4.745 min
 Delta R.T.: -0.006 min
 Response: 15989678
 Conc: 182.59 ng/ml



#5 AR-1016-3

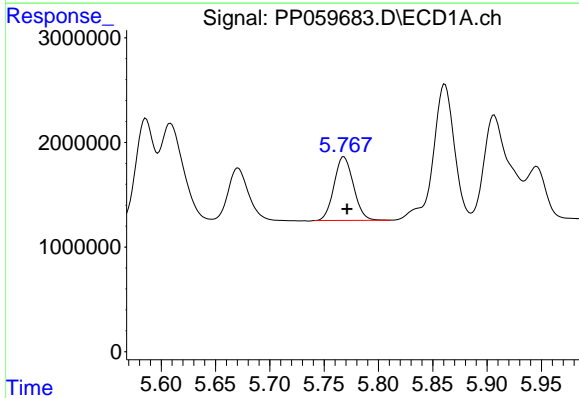
R.T.: 5.671 min
 Delta R.T.: -0.002 min
 Response: 6811555
 Conc: 193.23 ng/ml

Instrument :
 ECD_P
 ClientSampleId :



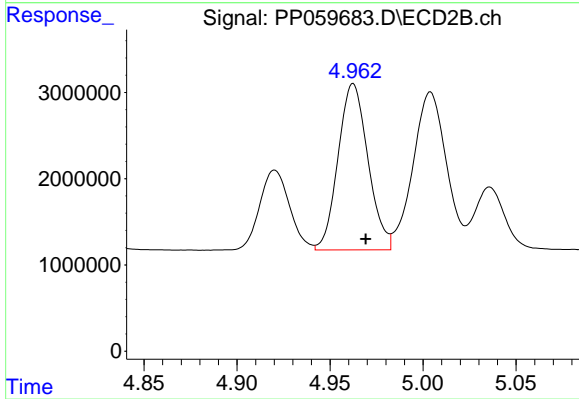
#5 AR-1016-3

R.T.: 4.920 min
 Delta R.T.: -0.006 min
 Response: 10387052
 Conc: 230.90 ng/ml



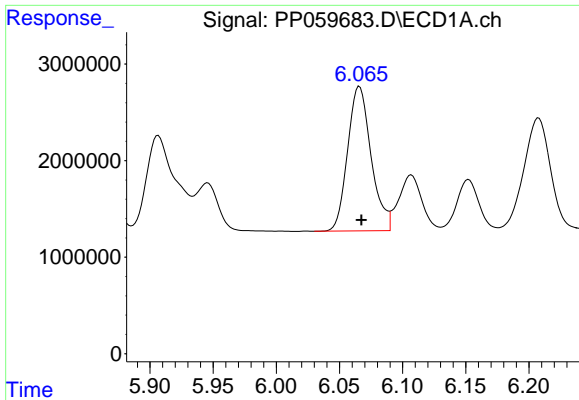
#6 AR-1016-4

R.T.: 5.768 min
 Delta R.T.: -0.003 min
 Response: 7565322
 Conc: 265.87 ng/ml



#6 AR-1016-4

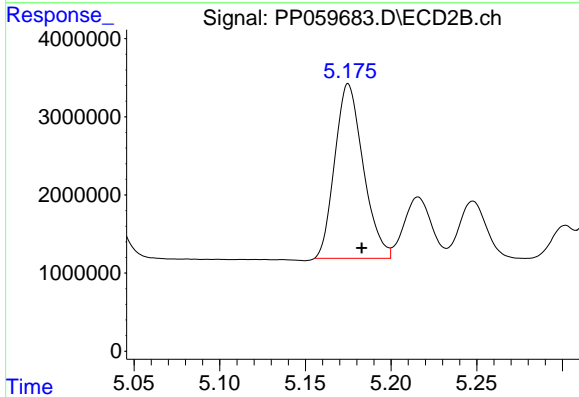
R.T.: 4.962 min
 Delta R.T.: -0.007 min
 Response: 21566064
 Conc: 554.58 ng/ml



#7 AR-1016-5

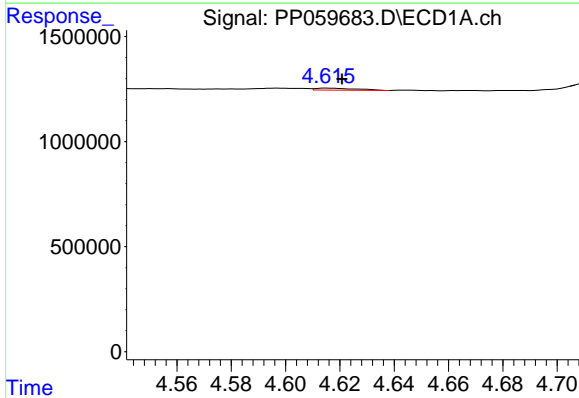
R.T.: 6.066 min
 Delta R.T.: -0.002 min
 Response: 19347628
 Conc: 637.32 ng/ml

Instrument :
 ECD_P
 ClientSampleId :



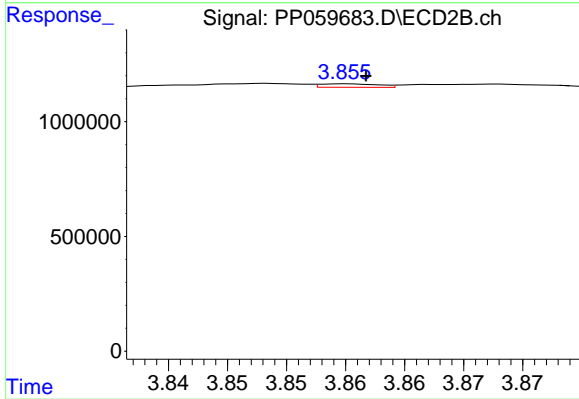
#7 AR-1016-5

R.T.: 5.175 min
 Delta R.T.: -0.008 min
 Response: 25773734
 Conc: 511.62 ng/ml



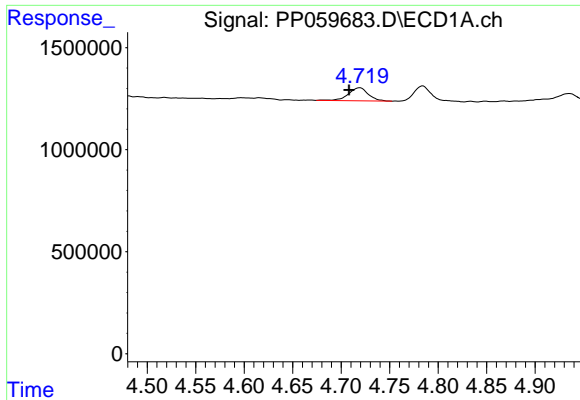
#8 AR-1221-1

R.T.: 4.615 min
 Delta R.T.: -0.005 min
 Response: 103829
 Conc: 7.02 ng/ml



#8 AR-1221-1

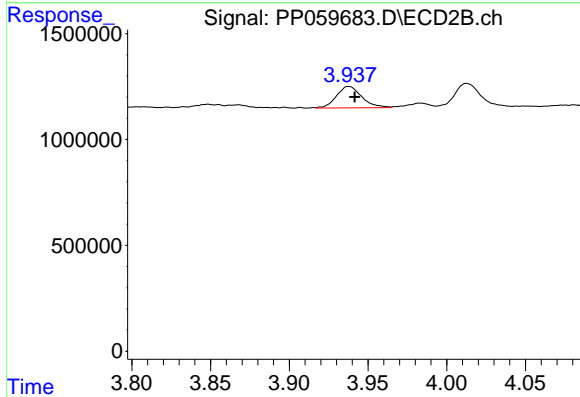
R.T.: 3.855 min
 Delta R.T.: -0.002 min
 Response: 51984
 Conc: 2.24 ng/ml



#9 AR-1221-2

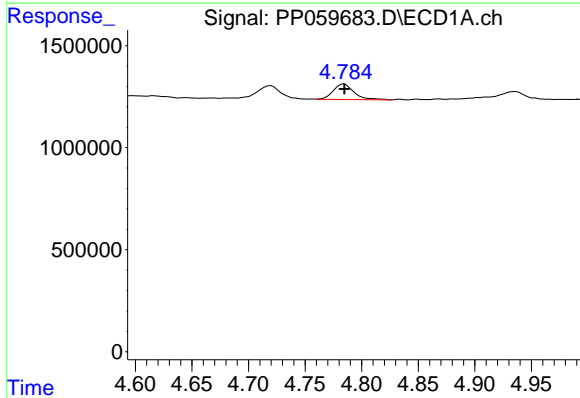
R.T.: 4.719 min
 Delta R.T.: 0.011 min
 Response: 927356
 Conc: 84.77 ng/ml

Instrument :
 ECD_P
 ClientSampleId :



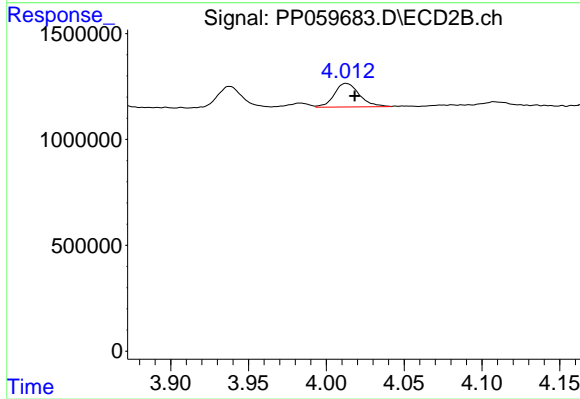
#9 AR-1221-2

R.T.: 3.937 min
 Delta R.T.: -0.004 min
 Response: 1127960
 Conc: 67.85 ng/ml



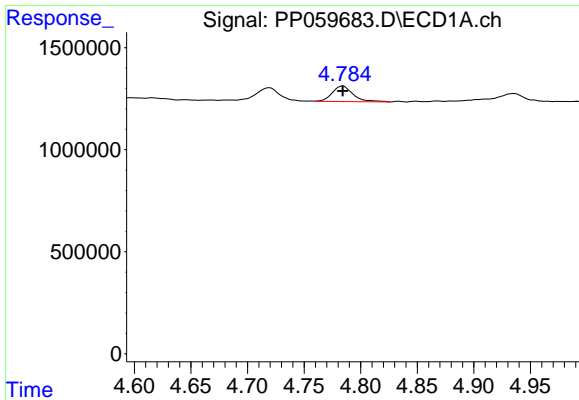
#10 AR-1221-3

R.T.: 4.784 min
 Delta R.T.: 0.000 min
 Response: 962040
 Conc: 28.43 ng/ml



#10 AR-1221-3

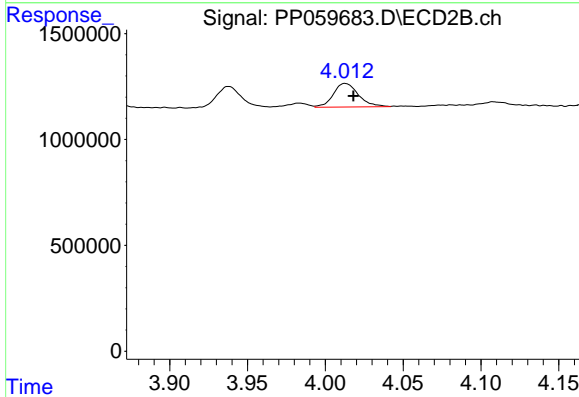
R.T.: 4.013 min
 Delta R.T.: -0.006 min
 Response: 1254938
 Conc: 24.33 ng/ml



#11 AR-1232-1

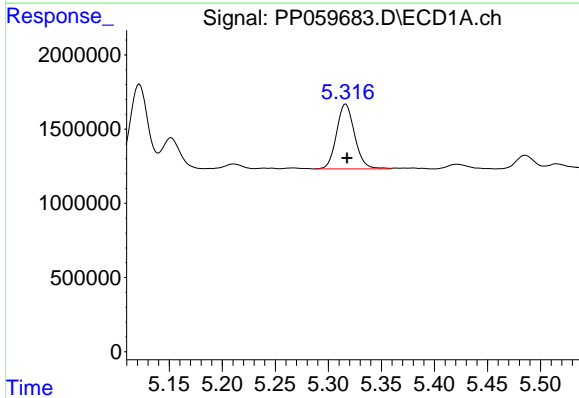
R.T.: 4.784 min
 Delta R.T.: 0.000 min
 Response: 962040
 Conc: 34.21 ng/ml

Instrument :
 ECD_P
 ClientSampleId :



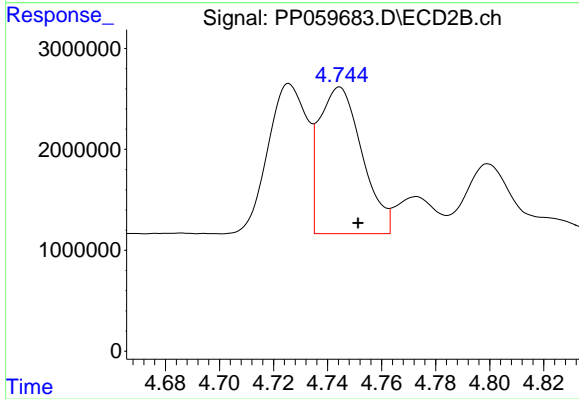
#11 AR-1232-1

R.T.: 4.013 min
 Delta R.T.: -0.005 min
 Response: 1254938
 Conc: 30.02 ng/ml



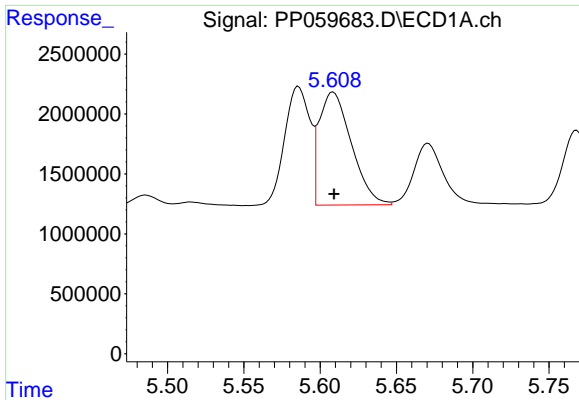
#12 AR-1232-2

R.T.: 5.316 min
 Delta R.T.: -0.001 min
 Response: 5180906
 Conc: 340.52 ng/ml



#12 AR-1232-2

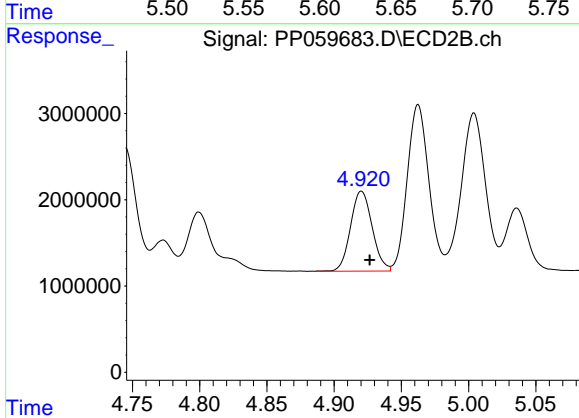
R.T.: 4.745 min
 Delta R.T.: -0.007 min
 Response: 15989678
 Conc: 400.42 ng/ml



#13 AR-1232-3

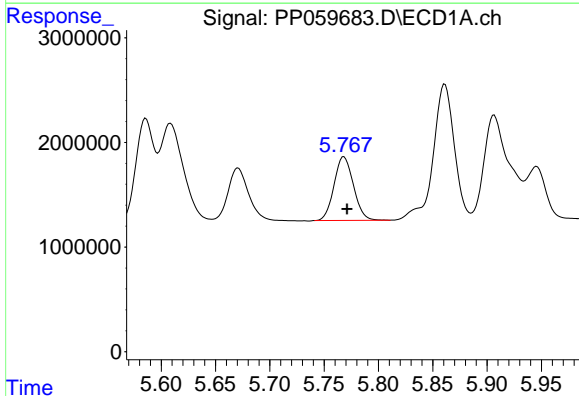
R.T.: 5.609 min
 Delta R.T.: 0.000 min
 Response: 13846581
 Conc: 538.23 ng/ml

Instrument :
 ECD_P
 ClientSampleId :



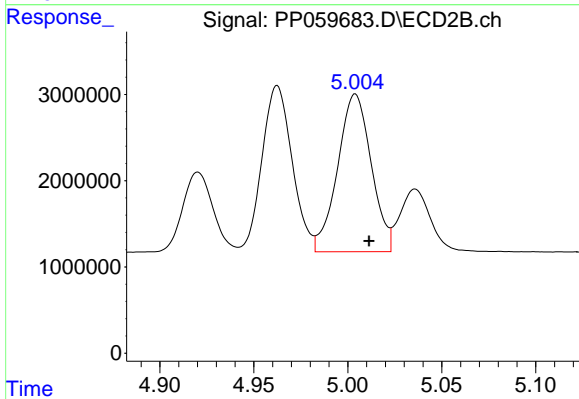
#13 AR-1232-3

R.T.: 4.920 min
 Delta R.T.: -0.006 min
 Response: 10387052
 Conc: 515.63 ng/ml



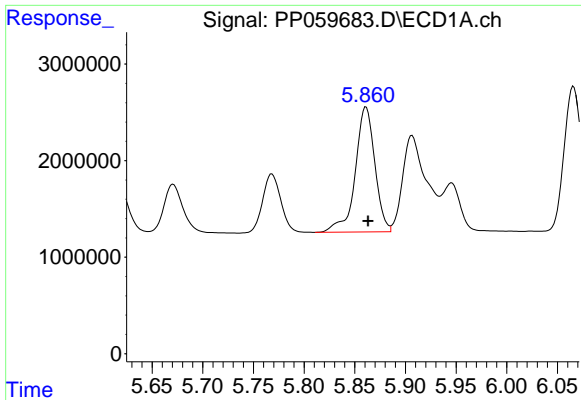
#14 AR-1232-4

R.T.: 5.768 min
 Delta R.T.: -0.003 min
 Response: 7565322
 Conc: 594.82 ng/ml



#14 AR-1232-4

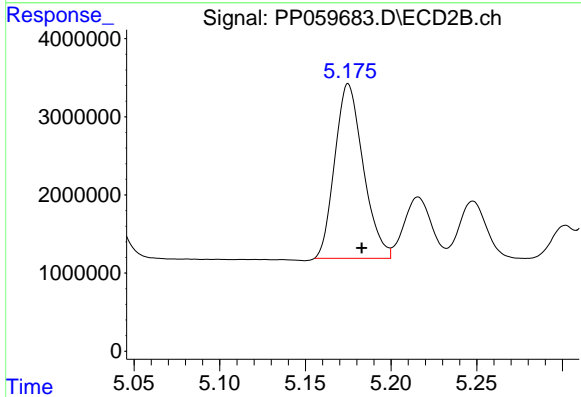
R.T.: 5.004 min
 Delta R.T.: -0.007 min
 Response: 22778614
 Conc: 1165.13 ng/ml



#15 AR-1232-5

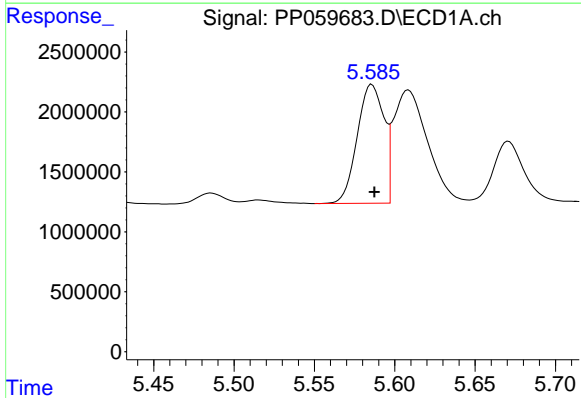
R.T.: 5.861 min
 Delta R.T.: -0.002 min
 Response: 17430854
 Conc: 1587.24 ng/ml

Instrument :
 ECD_P
 ClientSampleId :



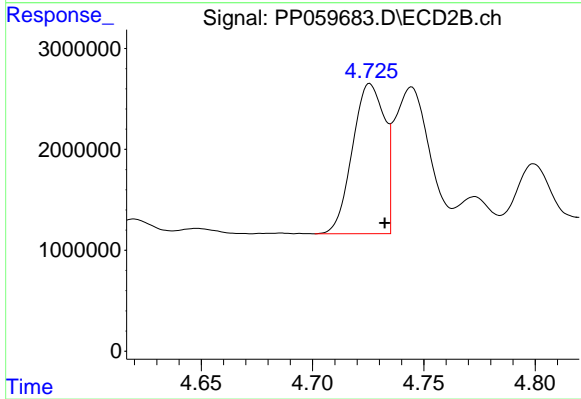
#15 AR-1232-5

R.T.: 5.175 min
 Delta R.T.: -0.008 min
 Response: 25773734
 Conc: 1198.06 ng/ml



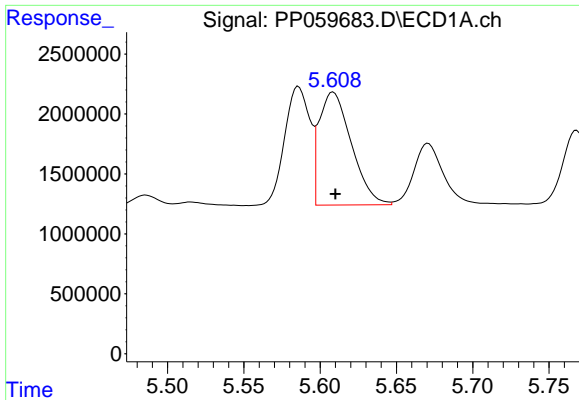
#16 AR-1242-1

R.T.: 5.586 min
 Delta R.T.: -0.002 min
 Response: 11442129
 Conc: 340.21 ng/ml



#16 AR-1242-1

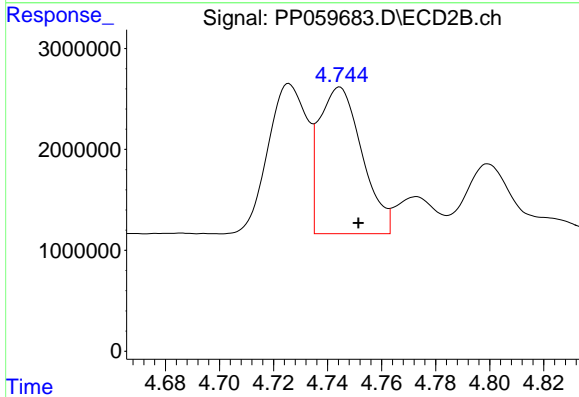
R.T.: 4.726 min
 Delta R.T.: -0.007 min
 Response: 14912677
 Conc: 290.51 ng/ml



#17 AR-1242-2

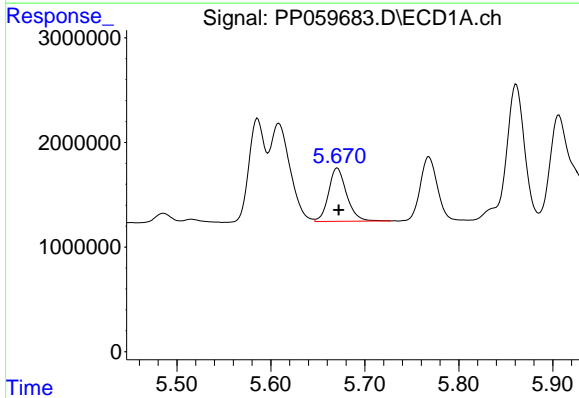
R.T.: 5.609 min
 Delta R.T.: -0.001 min
 Response: 13846581
 Conc: 284.03 ng/ml

Instrument :
 ECD_P
 ClientSampleId :



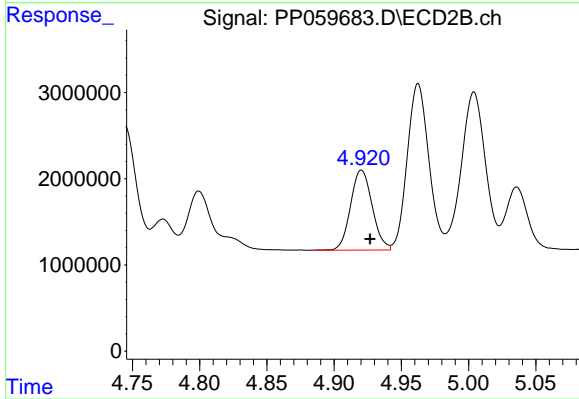
#17 AR-1242-2

R.T.: 4.745 min
 Delta R.T.: -0.007 min
 Response: 15989678
 Conc: 210.68 ng/ml



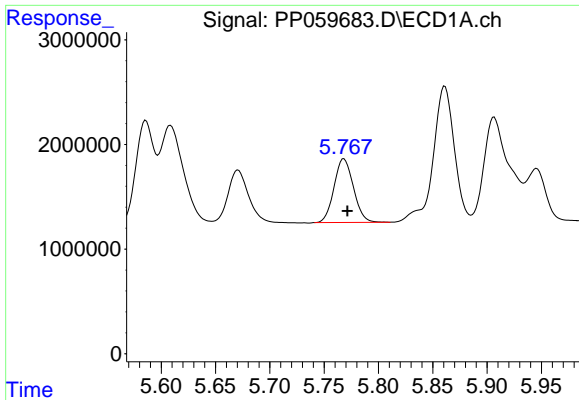
#18 AR-1242-3

R.T.: 5.671 min
 Delta R.T.: -0.002 min
 Response: 6811555
 Conc: 219.82 ng/ml



#18 AR-1242-3

R.T.: 4.920 min
 Delta R.T.: -0.006 min
 Response: 10387052
 Conc: 268.43 ng/ml

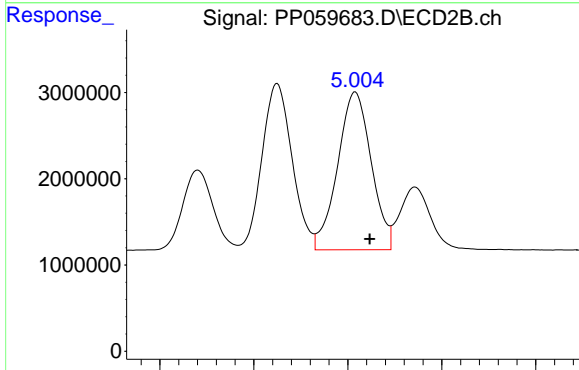


#19 AR-1242-4

R.T.: 5.768 min
 Delta R.T.: -0.003 min
 Response: 7565322
 Conc: 303.53 ng/ml

Instrument :
 ECD_P
 ClientSampleId :

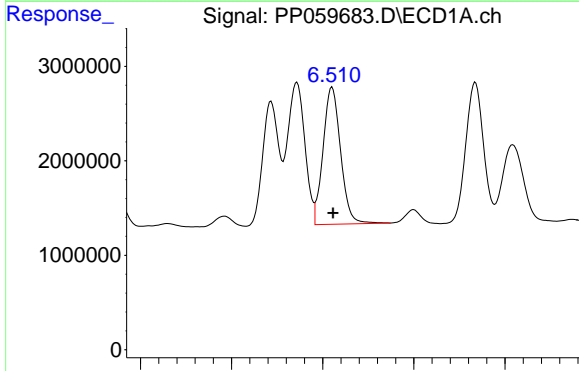
Time 5.60 5.65 5.70 5.75 5.80 5.85 5.90 5.95



#19 AR-1242-4

R.T.: 5.004 min
 Delta R.T.: -0.008 min
 Response: 22778614
 Conc: 558.36 ng/ml

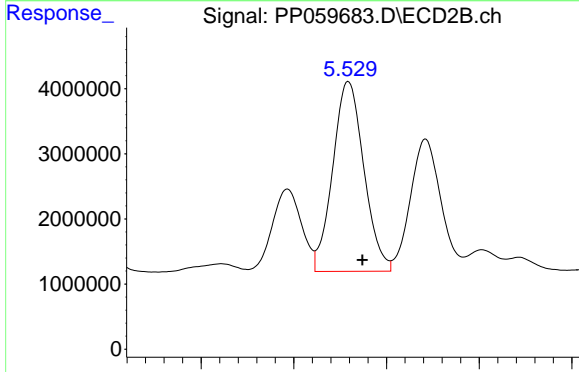
Time 4.90 4.95 5.00 5.05 5.10



#20 AR-1242-5

R.T.: 6.510 min
 Delta R.T.: -0.001 min
 Response: 19404115
 Conc: 748.26 ng/ml

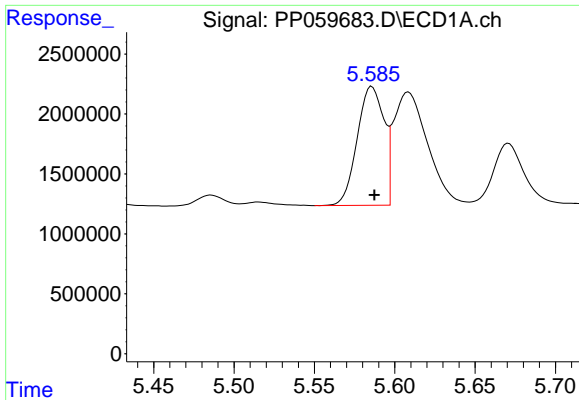
Time 6.30 6.40 6.50 6.60 6.70



#20 AR-1242-5

R.T.: 5.530 min
 Delta R.T.: -0.008 min
 Response: 34025785
 Conc: 725.00 ng/ml

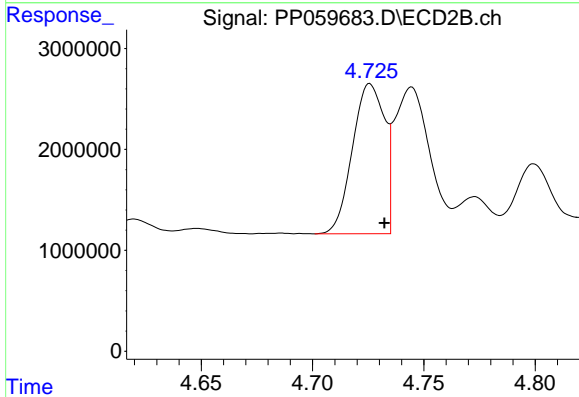
Time 5.45 5.50 5.55 5.60



#21 AR-1248-1

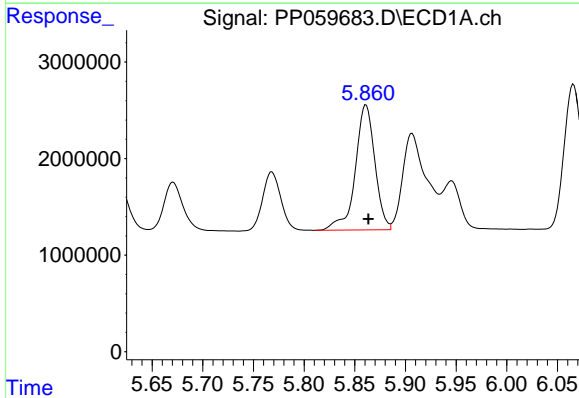
R.T.: 5.586 min
 Delta R.T.: -0.001 min
 Response: 11442129
 Conc: 462.50 ng/ml

Instrument :
 ECD_P
 ClientSampleId :



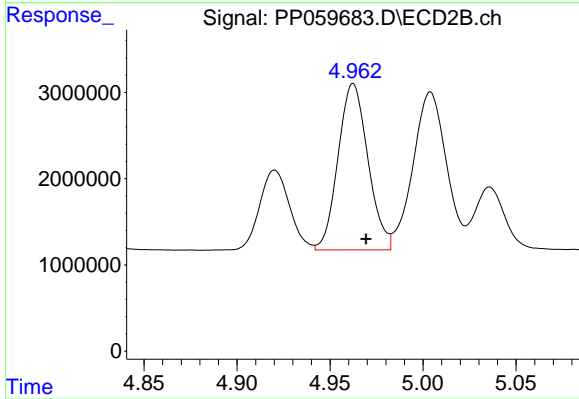
#21 AR-1248-1

R.T.: 4.726 min
 Delta R.T.: -0.007 min
 Response: 14912677
 Conc: 379.20 ng/ml



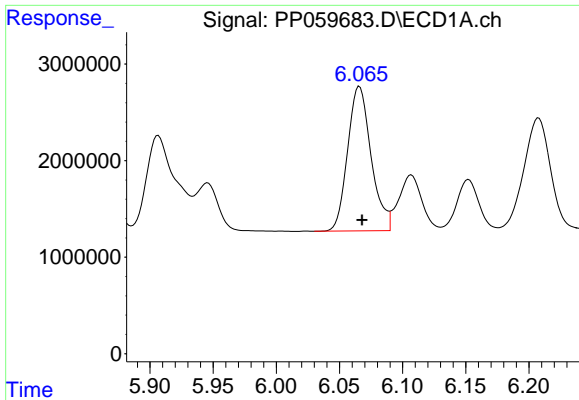
#22 AR-1248-2

R.T.: 5.861 min
 Delta R.T.: -0.002 min
 Response: 17430854
 Conc: 453.21 ng/ml



#22 AR-1248-2

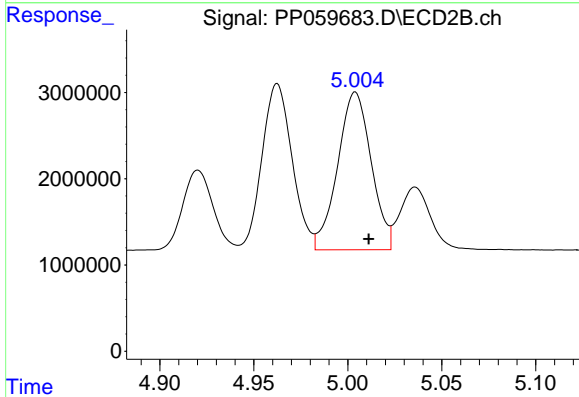
R.T.: 4.962 min
 Delta R.T.: -0.007 min
 Response: 21566064
 Conc: 362.48 ng/ml



#23 AR-1248-3

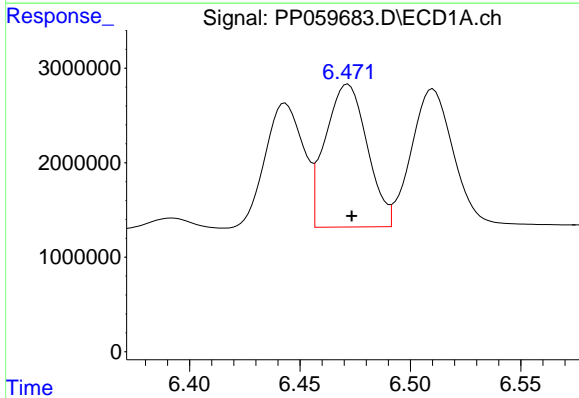
R.T.: 6.066 min
 Delta R.T.: -0.002 min
 Response: 19347628
 Conc: 457.95 ng/ml

Instrument :
 ECD_P
 ClientSampleId :



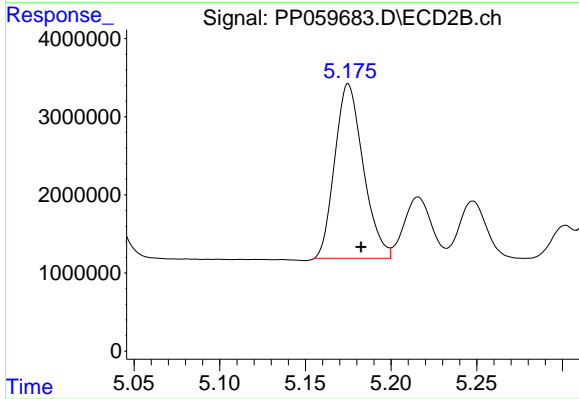
#23 AR-1248-3

R.T.: 5.004 min
 Delta R.T.: -0.007 min
 Response: 22778614
 Conc: 372.44 ng/ml



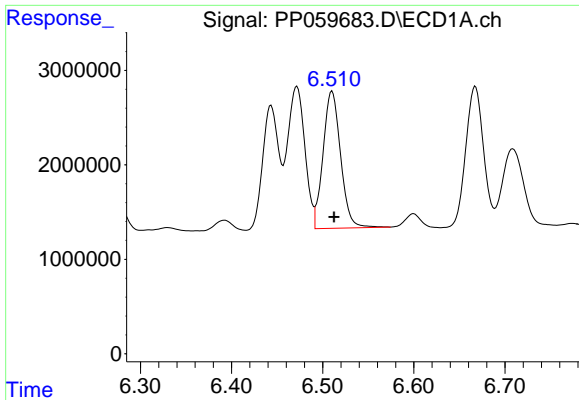
#24 AR-1248-4

R.T.: 6.472 min
 Delta R.T.: -0.002 min
 Response: 19949609
 Conc: 459.28 ng/ml



#24 AR-1248-4

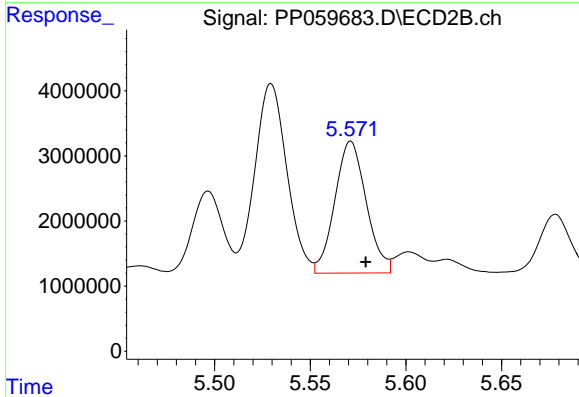
R.T.: 5.175 min
 Delta R.T.: -0.008 min
 Response: 25773734
 Conc: 353.05 ng/ml



#25 AR-1248-5

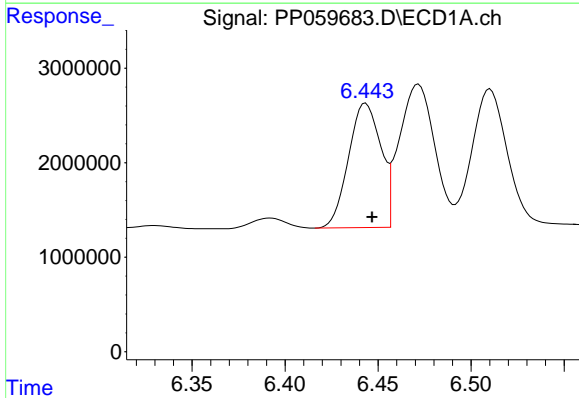
R.T.: 6.510 min
 Delta R.T.: -0.002 min
 Response: 19404115
 Conc: 458.60 ng/ml

Instrument :
 ECD_P
 ClientSampleId :



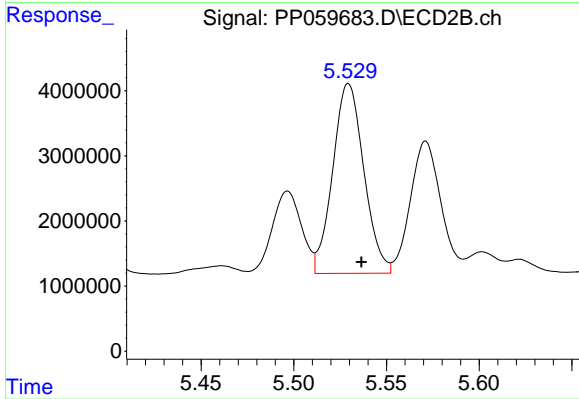
#25 AR-1248-5

R.T.: 5.571 min
 Delta R.T.: -0.008 min
 Response: 23153687
 Conc: 355.52 ng/ml



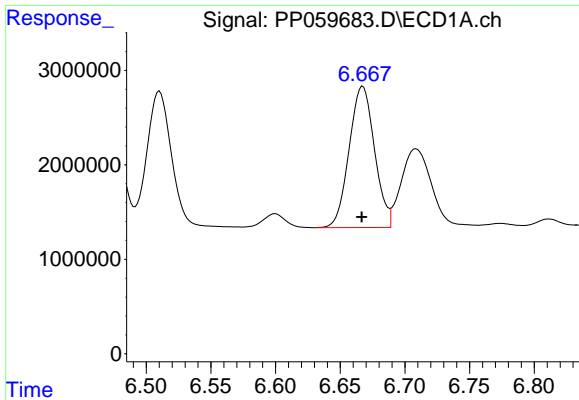
#26 AR-1254-1

R.T.: 6.443 min
 Delta R.T.: -0.004 min
 Response: 15893649
 Conc: 327.65 ng/ml



#26 AR-1254-1

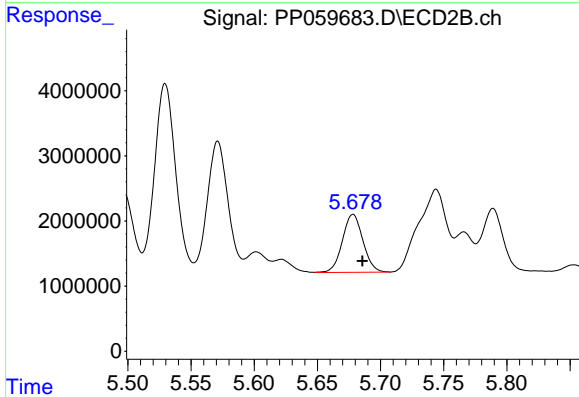
R.T.: 5.530 min
 Delta R.T.: -0.007 min
 Response: 34025785
 Conc: 331.54 ng/ml



#27 AR-1254-2

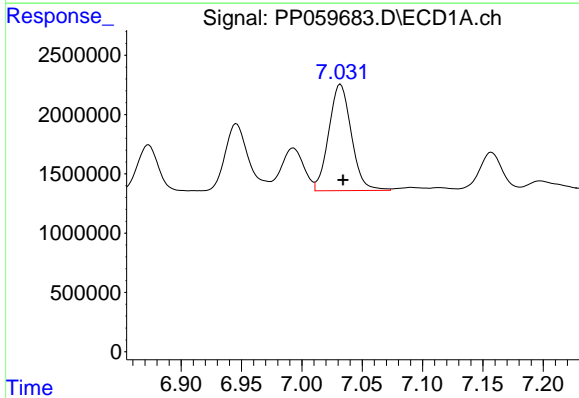
R.T.: 6.667 min
 Delta R.T.: 0.000 min
 Response: 20403673
 Conc: 282.90 ng/ml

Instrument :
 ECD_P
 ClientSampleId :



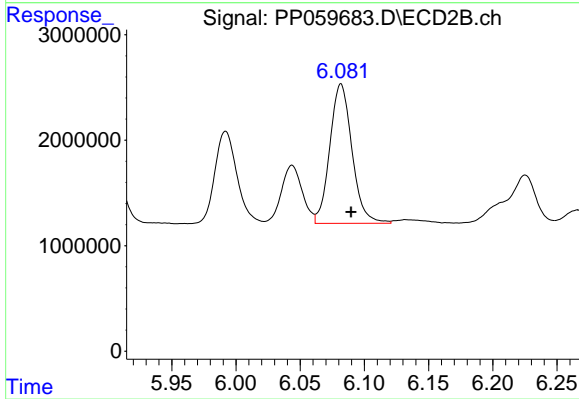
#27 AR-1254-2

R.T.: 5.678 min
 Delta R.T.: -0.007 min
 Response: 10047935
 Conc: 114.60 ng/ml



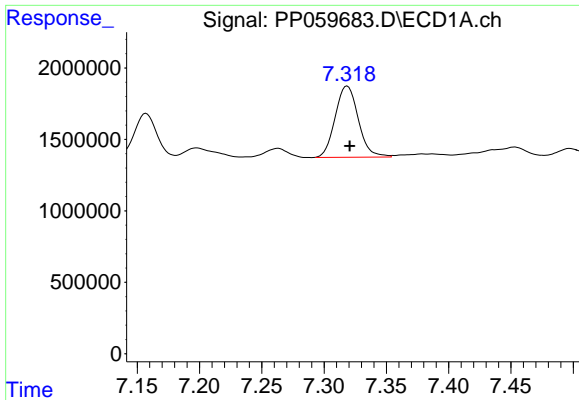
#28 AR-1254-3

R.T.: 7.032 min
 Delta R.T.: -0.002 min
 Response: 11685881
 Conc: 164.77 ng/ml



#28 AR-1254-3

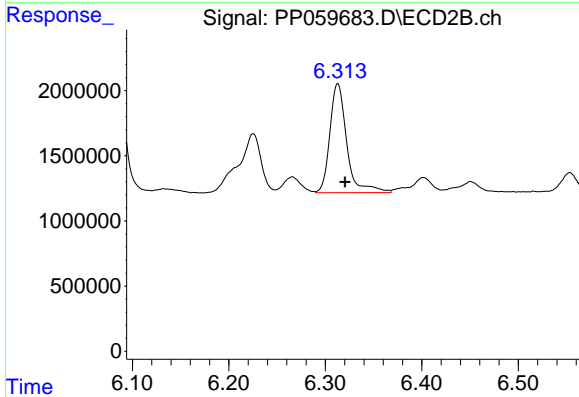
R.T.: 6.082 min
 Delta R.T.: -0.008 min
 Response: 15931414
 Conc: 113.61 ng/ml



#29 AR-1254-4

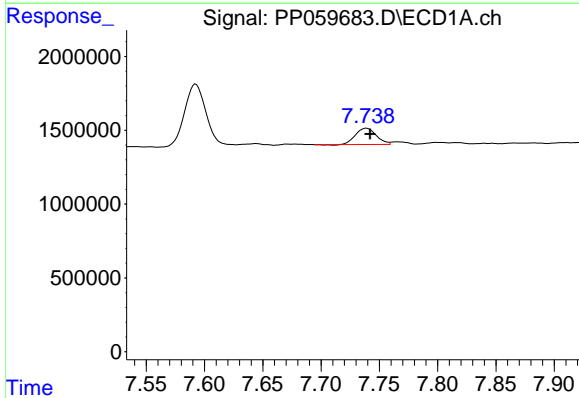
R.T.: 7.319 min
Delta R.T.: -0.002 min
Response: 6467640
Conc: 146.20 ng/ml

Instrument :
ECD_P
ClientSampleId :



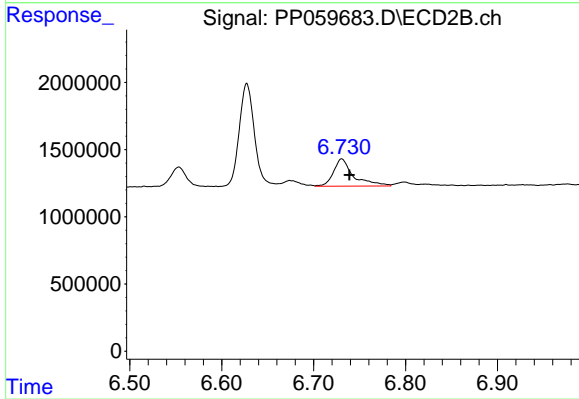
#29 AR-1254-4

R.T.: 6.313 min
Delta R.T.: -0.008 min
Response: 10149446
Conc: 127.99 ng/ml



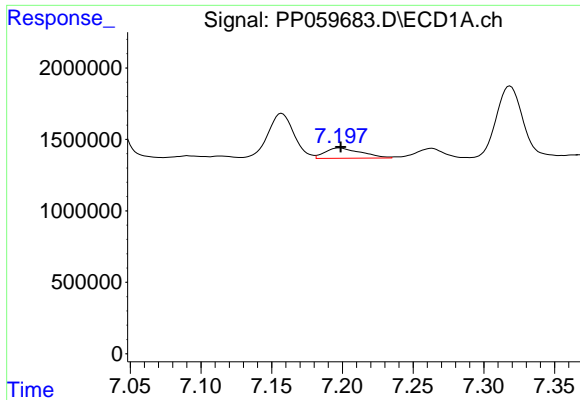
#30 AR-1254-5

R.T.: 7.739 min
Delta R.T.: -0.003 min
Response: 1351745
Conc: 29.51 ng/ml



#30 AR-1254-5

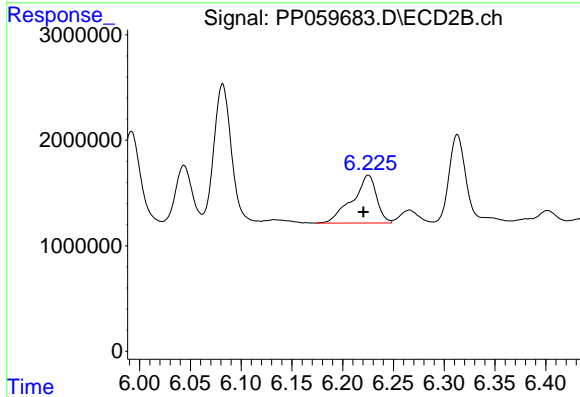
R.T.: 6.731 min
Delta R.T.: -0.008 min
Response: 3066630
Conc: 25.48 ng/ml



#31 AR-1260-1

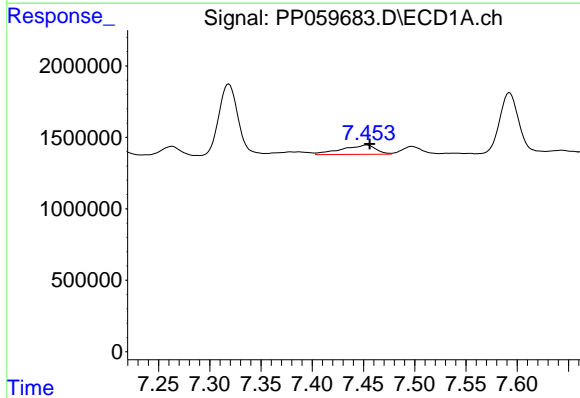
R.T.: 7.198 min
 Delta R.T.: -0.001 min
 Response: 1258740
 Conc: 22.49 ng/ml

Instrument :
 ECD_P
 ClientSampleId :



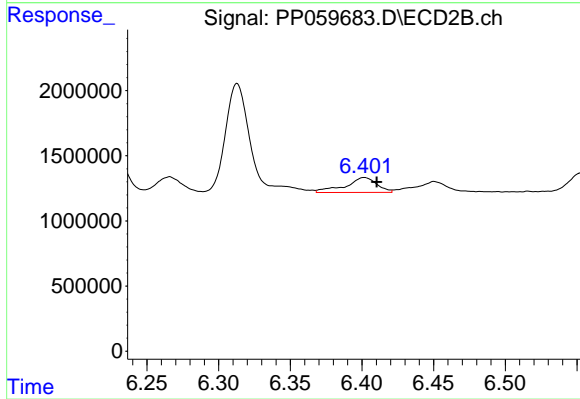
#31 AR-1260-1

R.T.: 6.225 min
 Delta R.T.: 0.005 min
 Response: 7545258
 Conc: 78.01 ng/ml



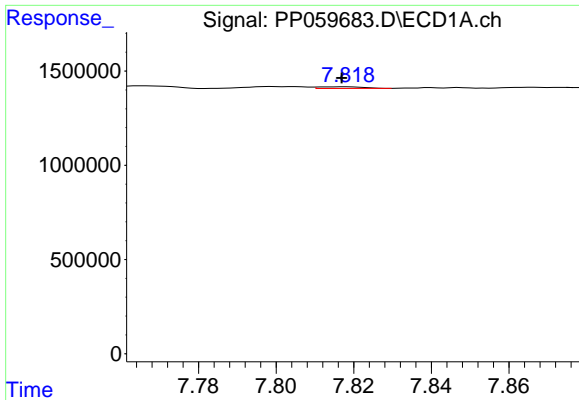
#32 AR-1260-2

R.T.: 7.453 min
 Delta R.T.: -0.003 min
 Response: 1533686
 Conc: 26.34 ng/ml



#32 AR-1260-2

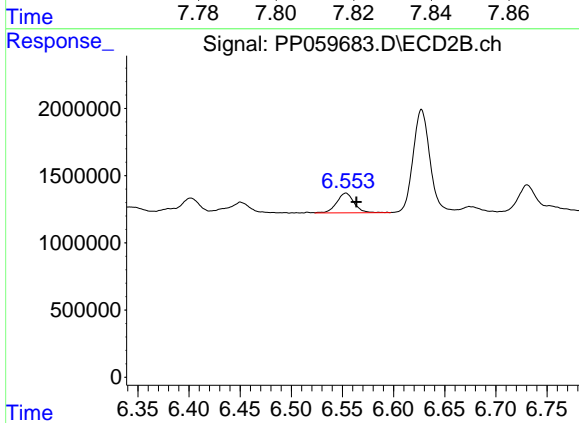
R.T.: 6.402 min
 Delta R.T.: -0.009 min
 Response: 1733893
 Conc: 15.68 ng/ml



#33 AR-1260-3

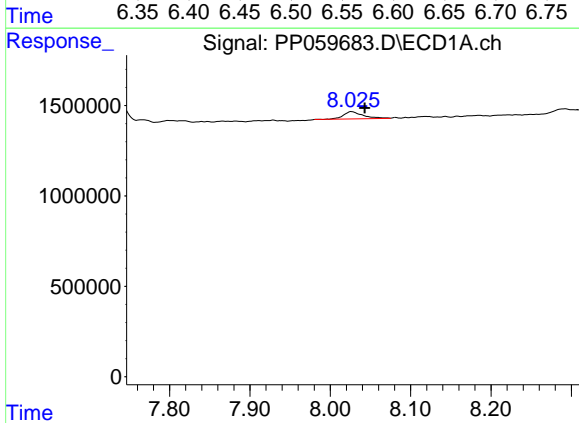
R.T.: 7.818 min
 Delta R.T.: 0.001 min
 Response: 75744
 Conc: 1.93 ng/ml

Instrument :
 ECD_P
 ClientSampleId :



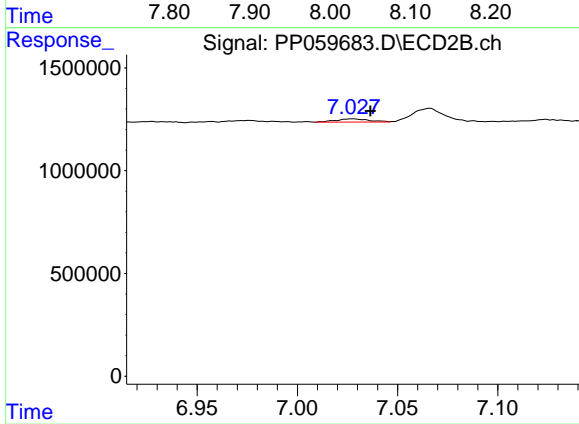
#33 AR-1260-3

R.T.: 6.553 min
 Delta R.T.: -0.010 min
 Response: 1768204
 Conc: 16.68 ng/ml



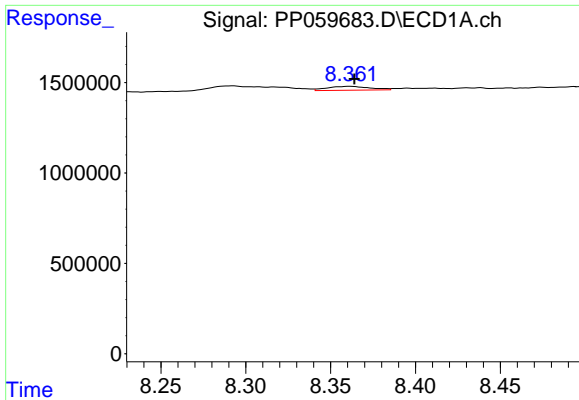
#34 AR-1260-4

R.T.: 8.027 min
 Delta R.T.: -0.016 min
 Response: 687758
 Conc: 15.89 ng/ml



#34 AR-1260-4

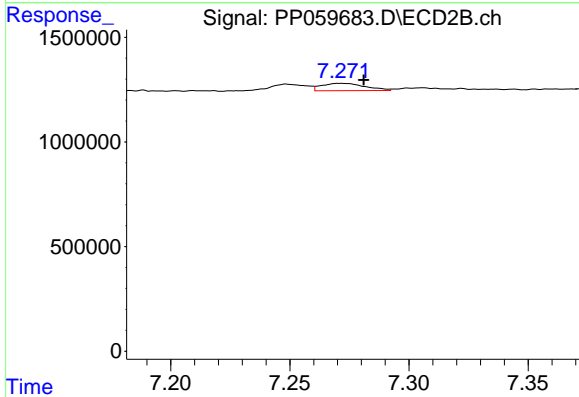
R.T.: 7.028 min
 Delta R.T.: -0.009 min
 Response: 175550
 Conc: 2.09 ng/ml



#35 AR-1260-5

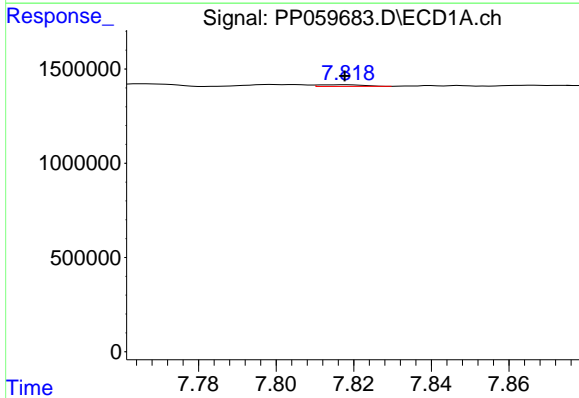
R.T.: 8.361 min
 Delta R.T.: -0.003 min
 Response: 370222
 Conc: 4.95 ng/ml

Instrument :
 ECD_P
 ClientSampleId :



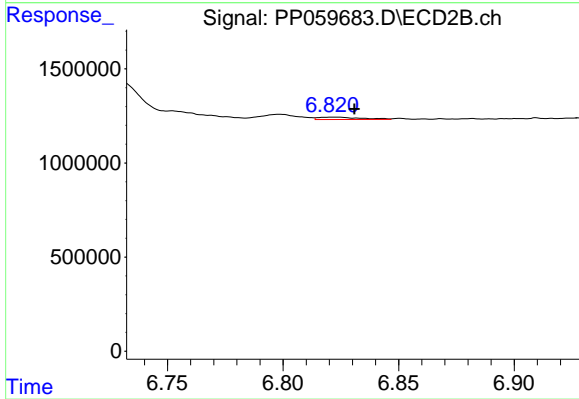
#35 AR-1260-5

R.T.: 7.271 min
 Delta R.T.: -0.009 min
 Response: 444414
 Conc: 2.54 ng/ml



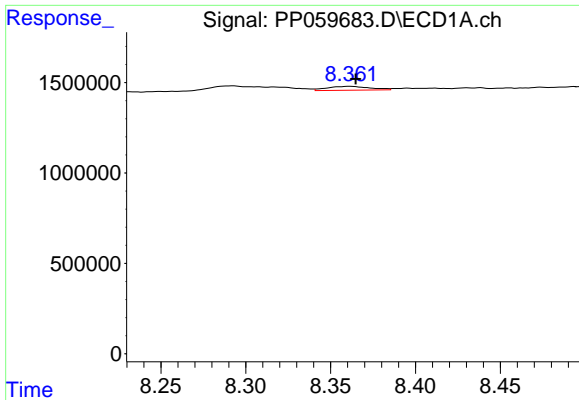
#36 AR-1262-1

R.T.: 7.818 min
 Delta R.T.: 0.000 min
 Response: 75744
 Conc: 1.30 ng/ml



#36 AR-1262-1

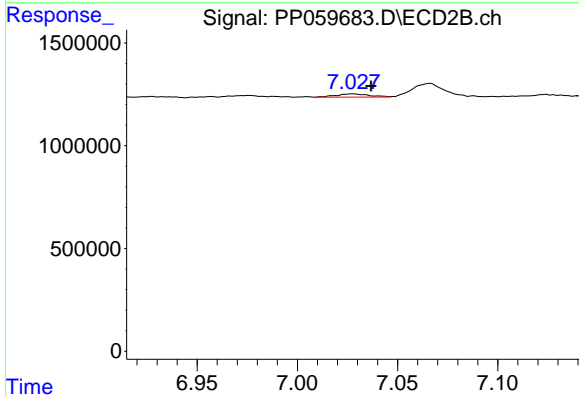
R.T.: 6.822 min
 Delta R.T.: -0.009 min
 Response: 153721
 Conc: 2.79 ng/ml



#37 AR-1262-2

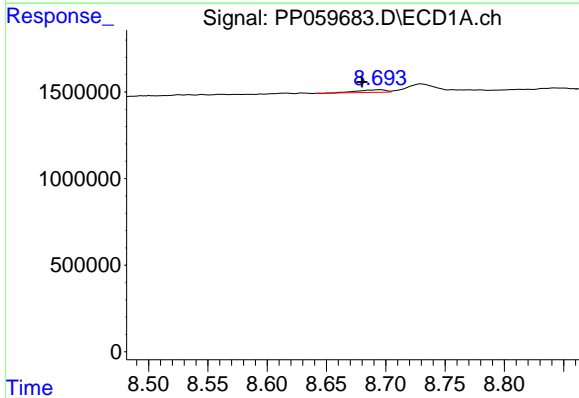
R.T.: 8.361 min
 Delta R.T.: -0.004 min
 Response: 370222
 Conc: 4.40 ng/ml

Instrument :
 ECD_P
 ClientSampleId :



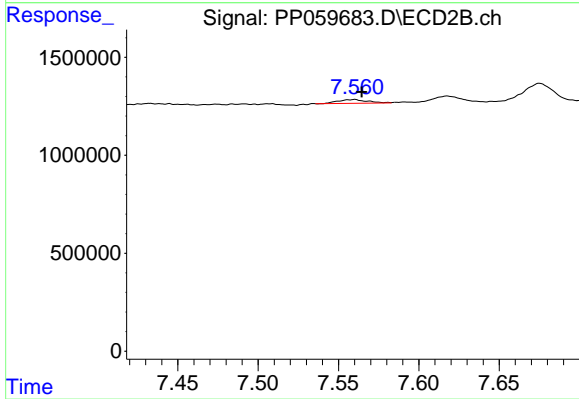
#37 AR-1262-2

R.T.: 7.028 min
 Delta R.T.: -0.009 min
 Response: 175550
 Conc: 1.55 ng/ml



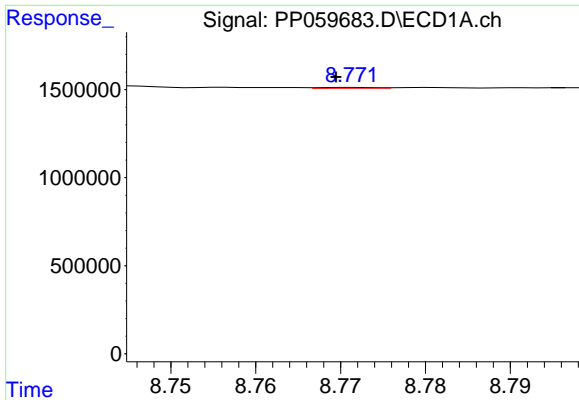
#38 AR-1262-3

R.T.: 8.695 min
 Delta R.T.: 0.015 min
 Response: 254180
 Conc: 4.18 ng/ml



#38 AR-1262-3

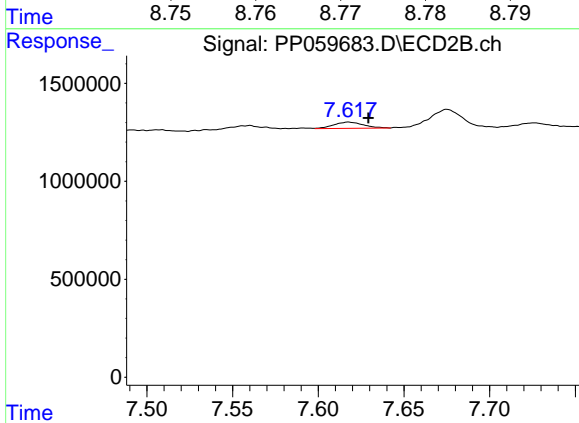
R.T.: 7.560 min
 Delta R.T.: -0.005 min
 Response: 238313
 Conc: 2.85 ng/ml



#39 AR-1262-4

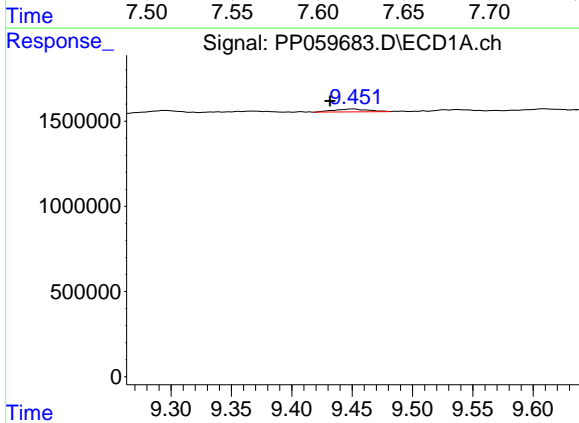
R.T.: 8.771 min
 Delta R.T.: 0.002 min
 Response: 23121
 Conc: 0.47 ng/ml

Instrument :
 ECD_P
 ClientSampleId :



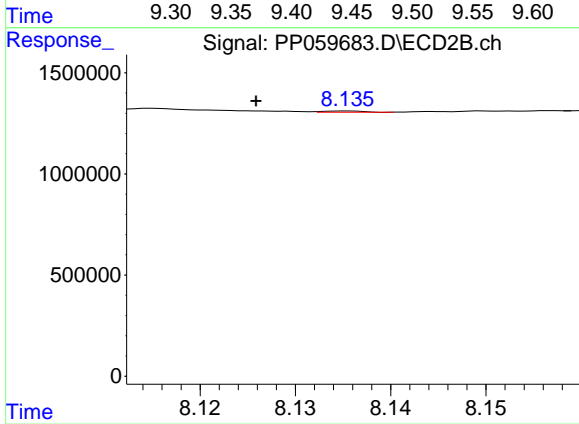
#39 AR-1262-4

R.T.: 7.618 min
 Delta R.T.: -0.011 min
 Response: 388678
 Conc: 2.63 ng/ml



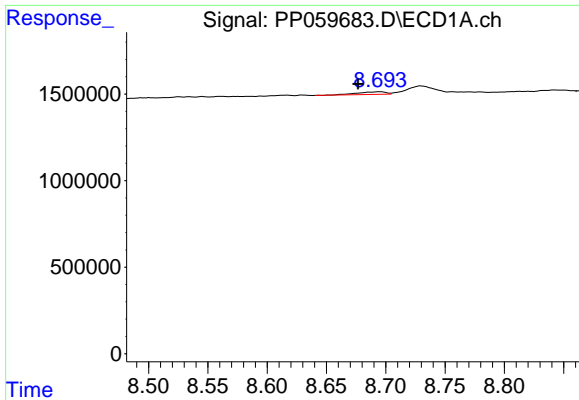
#40 AR-1262-5

R.T.: 9.451 min
 Delta R.T.: 0.019 min
 Response: 319770
 Conc: 10.95 ng/ml



#40 AR-1262-5

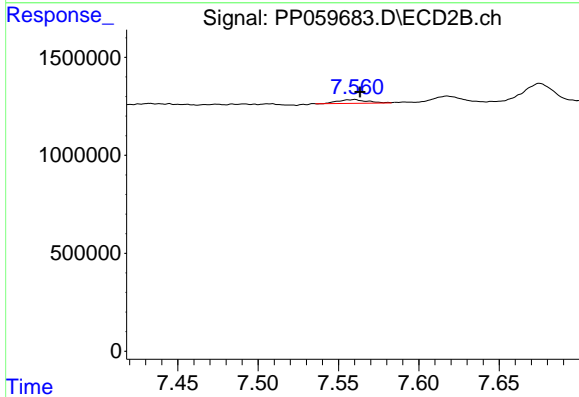
R.T.: 8.135 min
 Delta R.T.: 0.009 min
 Response: 17273
 Conc: 0.28 ng/ml



#41 AR-1268-1

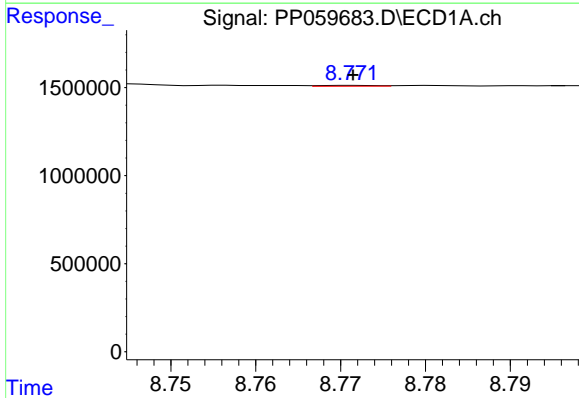
R.T.: 8.695 min
 Delta R.T.: 0.018 min
 Response: 254180
 Conc: 2.31 ng/ml

Instrument :
 ECD_P
 ClientSampleId :



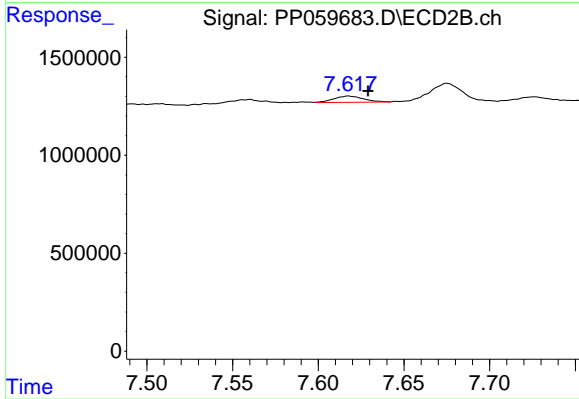
#41 AR-1268-1

R.T.: 7.560 min
 Delta R.T.: -0.004 min
 Response: 238313
 Conc: 1.02 ng/ml



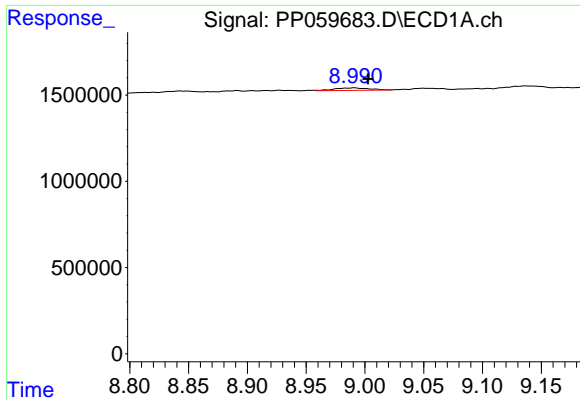
#42 AR-1268-2

R.T.: 8.771 min
 Delta R.T.: 0.000 min
 Response: 23121
 Conc: 0.24 ng/ml



#42 AR-1268-2

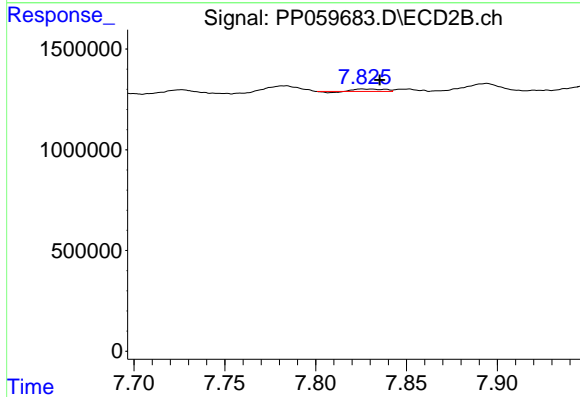
R.T.: 7.618 min
 Delta R.T.: -0.011 min
 Response: 388678
 Conc: 1.85 ng/ml



#43 AR-1268-3

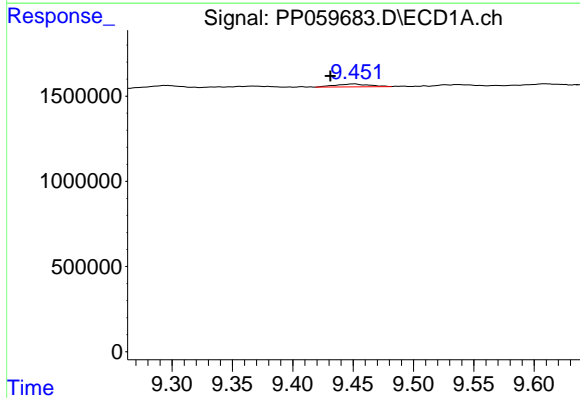
R.T.: 8.991 min
 Delta R.T.: -0.012 min
 Response: 308396
 Conc: 3.38 ng/ml

Instrument :
 ECD_P
 ClientSampleId :



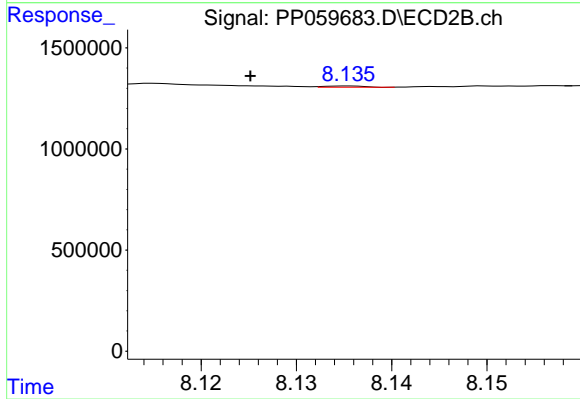
#43 AR-1268-3

R.T.: 7.826 min
 Delta R.T.: -0.010 min
 Response: 107152
 Conc: 0.56 ng/ml



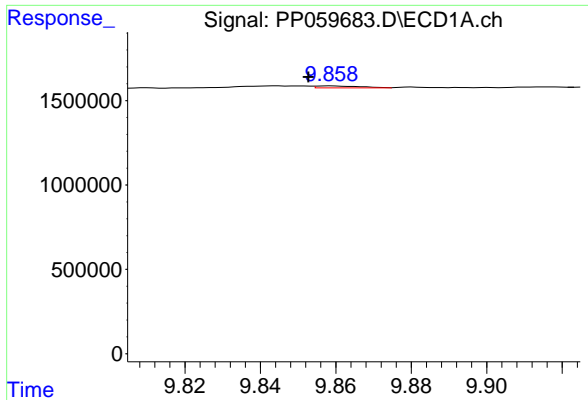
#44 AR-1268-4

R.T.: 9.451 min
 Delta R.T.: 0.020 min
 Response: 319770
 Conc: 9.99 ng/ml



#44 AR-1268-4

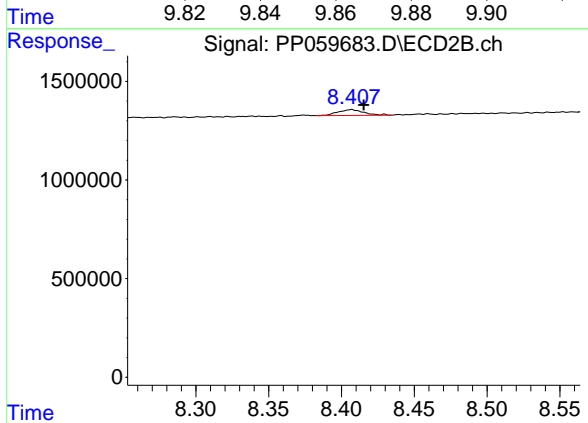
R.T.: 8.135 min
 Delta R.T.: 0.010 min
 Response: 17273
 Conc: 0.25 ng/ml



#45 AR-1268-5

R.T.: 9.859 min
 Delta R.T.: 0.006 min
 Response: 95001
 Conc: 0.39 ng/ml

Instrument :
 ECD_P
 ClientSampleId :



#45 AR-1268-5

R.T.: 8.407 min
 Delta R.T.: -0.009 min
 Response: 359560
 Conc: 0.71 ng/ml