

Data Path : Z:\pestpcbsrv\HPCHEM1\ECD\_P\Data\PP083123\  
 Data File : PP059694.D  
 Signal(s) : Signal #1: ECD1A.ch Signal #2: ECD2B.ch  
 Acq On : 01 Sep 2023 01:40  
 Operator : YP\AJ  
 Sample : 04246-23 10X  
 Misc :  
 ALS Vial : 35 Sample Multiplier: 1

Instrument :  
 ECD\_P  
 ClientSampleId :  
 DBA684K-END-1-1

Integration File signal 1: autoint1.e  
 Integration File signal 2: autoint2.e  
 Quant Time: Sep 01 04:45:17 2023  
 Quant Method : Z:\pestpcbsrv\HPCHEM1\ECD\_P\methods\PP082323.M  
 Quant Title : GC EXTRACTABLES  
 QLast Update : Thu Aug 24 01:16:04 2023  
 Response via : Initial Calibration  
 Integrator: ChemStation

Volume Inj. : 2 µl  
 Signal #1 Phase : ZB-MR1 Signal #2 Phase: ZB-MR2  
 Signal #1 Info : 30Mx0.32mmx 0.50µ Signal #2 Info : 30M x 0.32mm x 0.25µm

Compound	RT#1	RT#2	Resp#1	Resp#2	ng/ml	ng/ml
-----						
System Monitoring Compounds						
1) SA Tetrachlo...	4.409	3.636	2125389	2738419	1.798	1.417
2) SA Decachlor...	10.190	8.657	1910342	2103089	2.443	1.524 #

Target Compounds

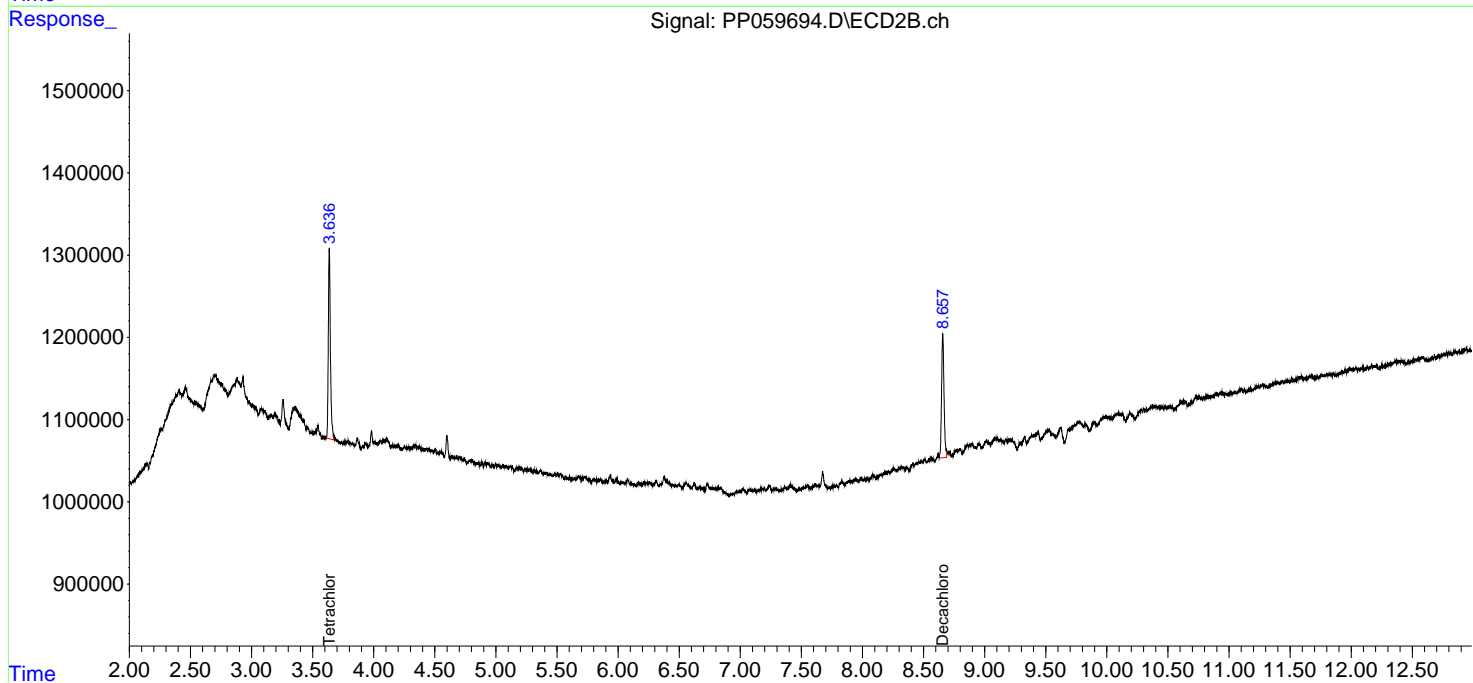
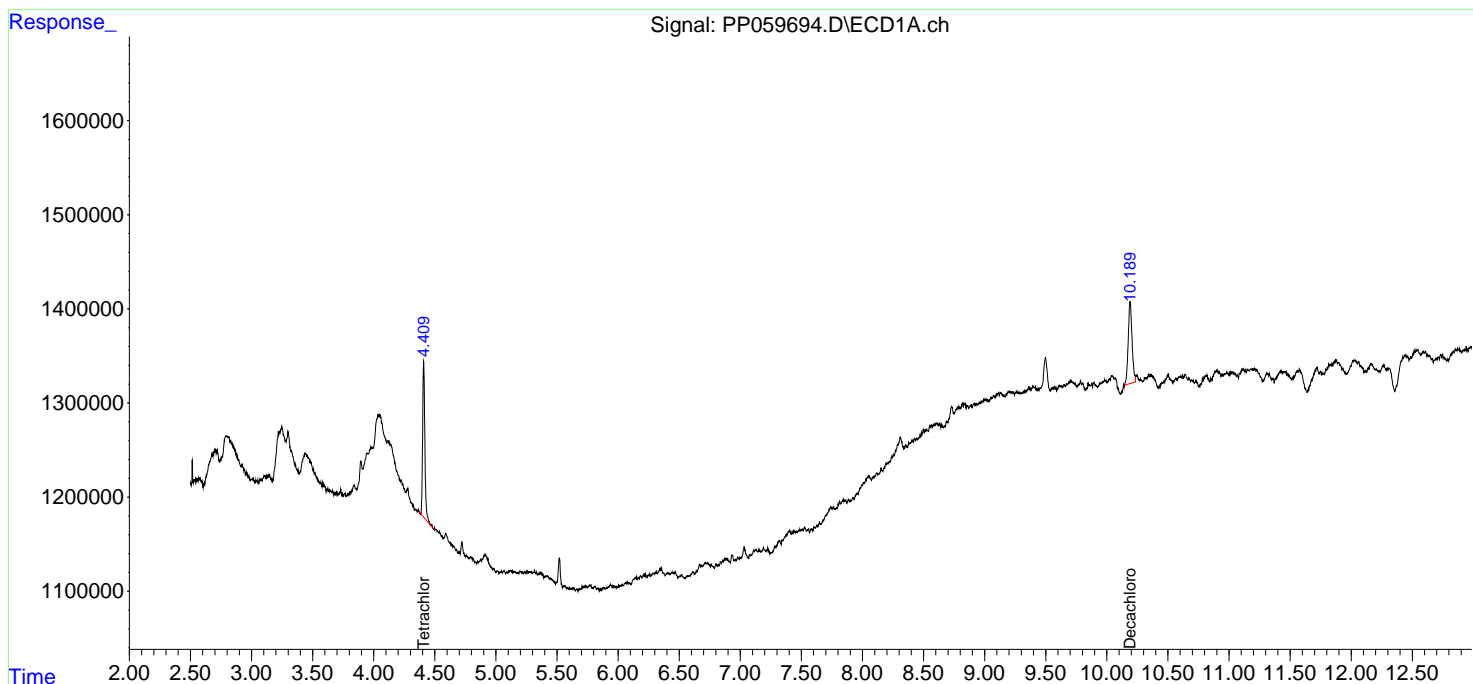
(f)=RT Delta > 1/2 Window (#)=Amounts differ by > 25% (m)=manual int.

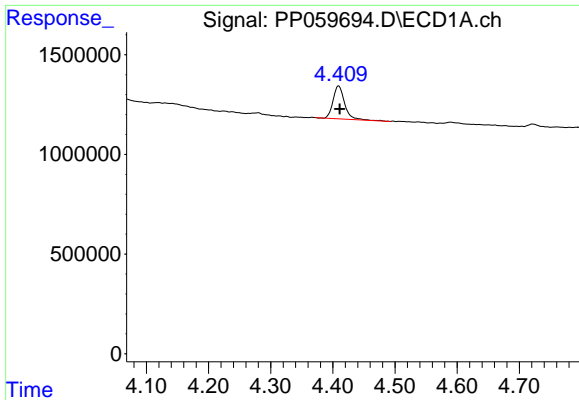
Data Path : Z:\pestpcbsrv\HPCHEM1\ECD\_P\Data\PP083123\  
 Data File : PP059694.D  
 Signal(s) : Signal #1: ECD1A.ch Signal #2: ECD2B.ch  
 Acq On : 01 Sep 2023 01:40  
 Operator : YP\AJ  
 Sample : 04246-23 10X  
 Misc :  
 ALS Vial : 35 Sample Multiplier: 1

**Instrument :**  
 ECD\_P  
**ClientSampleId :**  
 DBA684K-END-1-1

Integration File signal 1: autoint1.e  
 Integration File signal 2: autoint2.e  
 Quant Time: Sep 01 04:45:17 2023  
 Quant Method : Z:\pestpcbsrv\HPCHEM1\ECD\_P\methods\PP082323.M  
 Quant Title : GC EXTRACTABLES  
 QLast Update : Thu Aug 24 01:16:04 2023  
 Response via : Initial Calibration  
 Integrator: ChemStation

Volume Inj. : 2 µl  
 Signal #1 Phase : ZB-MR1 Signal #2 Phase: ZB-MR2  
 Signal #1 Info : 30Mx0.32mmx 0.50µ Signal #2 Info : 30M x 0.32mm x 0.25µm

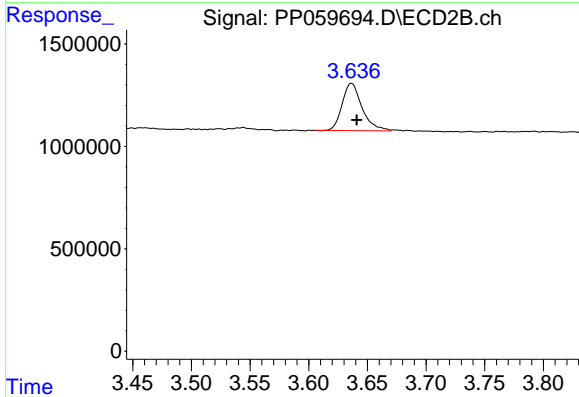




#1 Tetrachloro-m-xylene

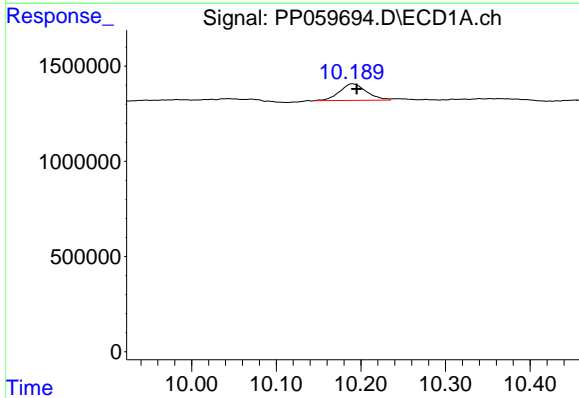
R.T.: 4.409 min  
 Delta R.T.: -0.002 min  
 Response: 2125389  
 Conc: 1.80 ng/ml

Instrument :  
 ECD\_P  
 ClientSampleId :  
 DBA684K-END-1-1



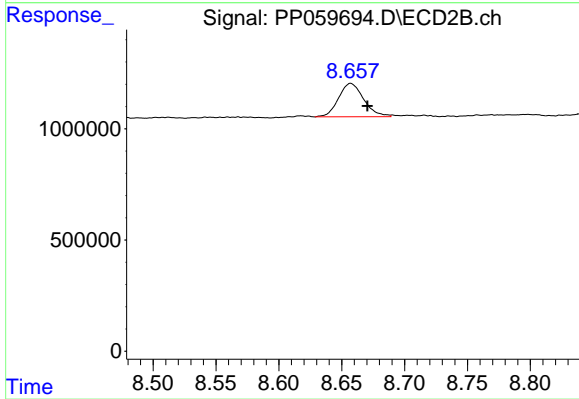
#1 Tetrachloro-m-xylene

R.T.: 3.636 min  
 Delta R.T.: -0.005 min  
 Response: 2738419  
 Conc: 1.42 ng/ml



#2 Decachlorobiphenyl

R.T.: 10.190 min  
 Delta R.T.: -0.005 min  
 Response: 1910342  
 Conc: 2.44 ng/ml



#2 Decachlorobiphenyl

R.T.: 8.657 min  
 Delta R.T.: -0.013 min  
 Response: 2103089  
 Conc: 1.52 ng/ml