

Data Path : Z:\pestpcbsrv\HPCHEM1\ECD\_P\Data\PP090221\  
 Data File : PP039154.D  
 Signal(s) : Signal #1: ECD1A.CH Signal #2: ECD2B.CH  
 Acq On : 03 Sep 2021 00:01  
 Operator : AJ\MA  
 Sample : AR1262ICC500  
 Misc :  
 ALS Vial : 27 Sample Multiplier: 1

Integration File signal 1: autoint1.e  
 Integration File signal 2: autoint2.e  
 Quant Time: Sep 03 02:56:35 2021  
 Quant Method : Z:\pestpcbsrv\HPCHEM1\ECD\_P\methods\PP090221.M  
 Quant Title : GC EXTRACTABLES  
 QLast Update : Fri Sep 03 02:56:14 2021  
 Response via : Initial Calibration  
 Integrator: ChemStation 6890 Scale Mode: Small noise peaks clipped

Volume Inj. : 2 µl  
 Signal #1 Phase : ZB-MR1 Signal #2 Phase: ZB-MR2  
 Signal #1 Info : 30Mx0.32mmx 0.50µ Signal #2 Info : 30M x 0.32mm x 0.25µm

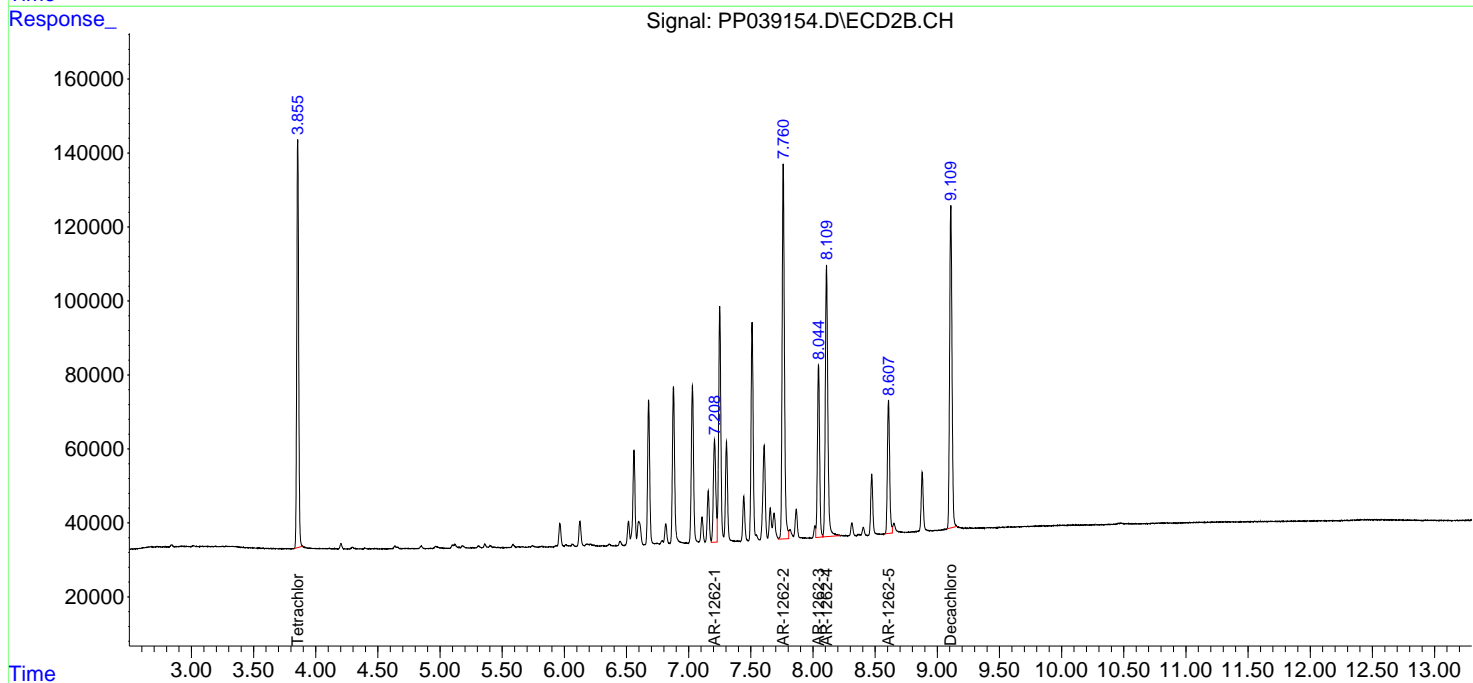
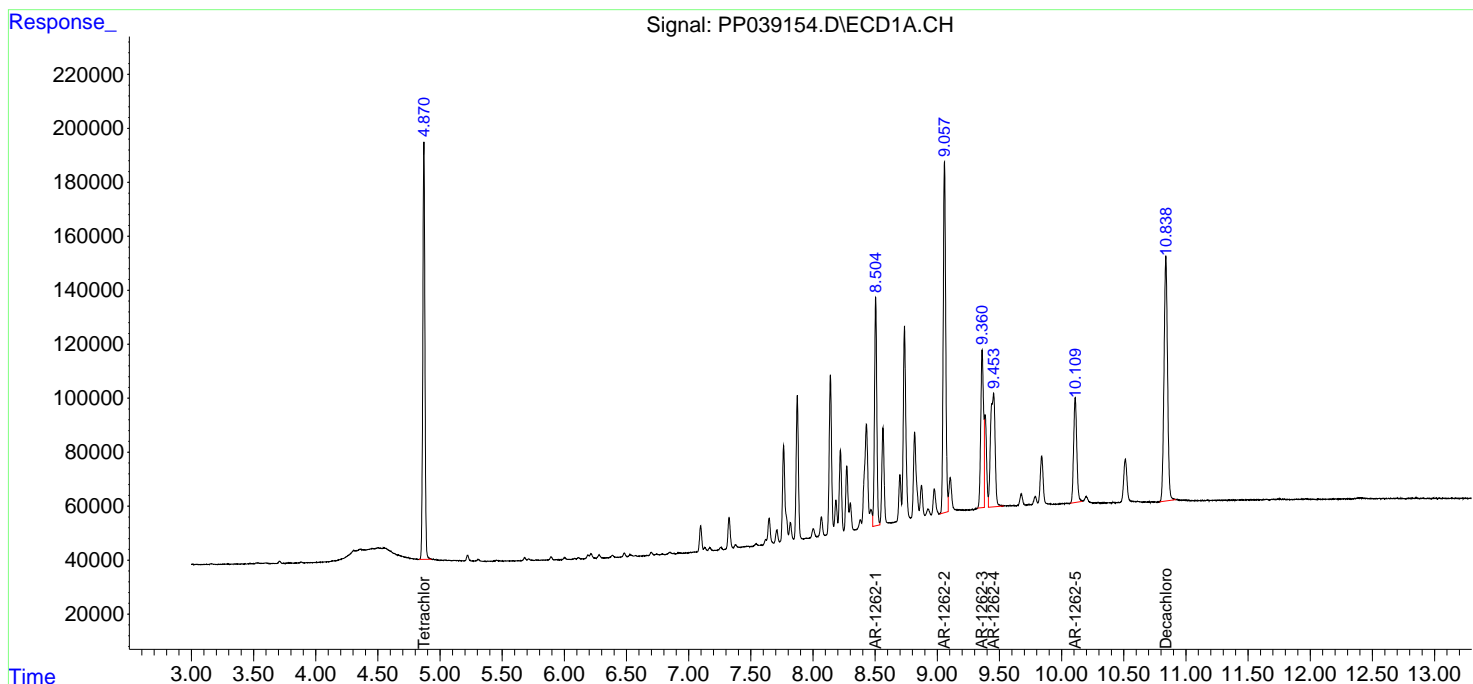
Compound	RT#1	RT#2	Resp#1	Resp#2	ng/ml	ng/ml
-----						
System Monitoring Compounds						
1) SA Tetrachlo...	4.870	3.855	1831885	1159094	50.000	50.000
2) SA Decachlor...	10.839	9.109	1783479	1156407	50.000	50.000
Target Compounds						
36) L8 AR-1262-1	8.504	7.208	1089206	382539	500.000	500.000
37) L8 AR-1262-2	9.058	7.761	1816348	1299379	500.000	500.000
38) L8 AR-1262-3	9.361	8.045	914603	567342	500.000	500.000
39) L8 AR-1262-4	9.453	8.109	1064980	1030106	843.997	500.000 #
40) L8 AR-1262-5	10.110	8.608	683624	455042	500.000	500.000
-----						

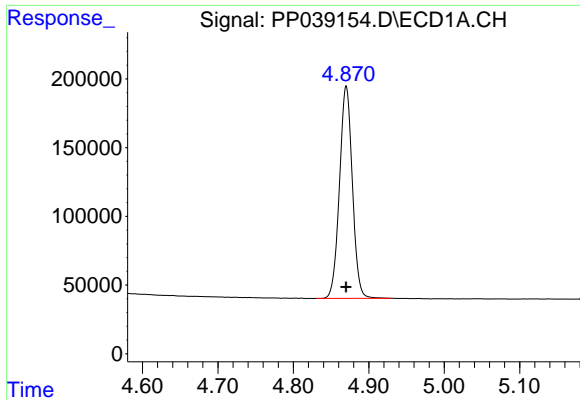
(f)=RT Delta > 1/2 Window (#)=Amounts differ by > 25% (m)=manual int.

Data Path : Z:\pestpcbsrv\HPCHEM1\ECD\_P\Data\PP090221\  
 Data File : PP039154.D  
 Signal(s) : Signal #1: ECD1A.CH Signal #2: ECD2B.CH  
 Acq On : 03 Sep 2021 00:01  
 Operator : AJ\MA  
 Sample : AR1262ICC500  
 Misc :  
 ALS Vial : 27 Sample Multiplier: 1

Integration File signal 1: autoint1.e  
 Integration File signal 2: autoint2.e  
 Quant Time: Sep 03 02:56:35 2021  
 Quant Method : Z:\pestpcbsrv\HPCHEM1\ECD\_P\methods\PP090221.M  
 Quant Title : GC EXTRACTABLES  
 QLast Update : Fri Sep 03 02:56:14 2021  
 Response via : Initial Calibration  
 Integrator: ChemStation 6890 Scale Mode: Small noise peaks clipped

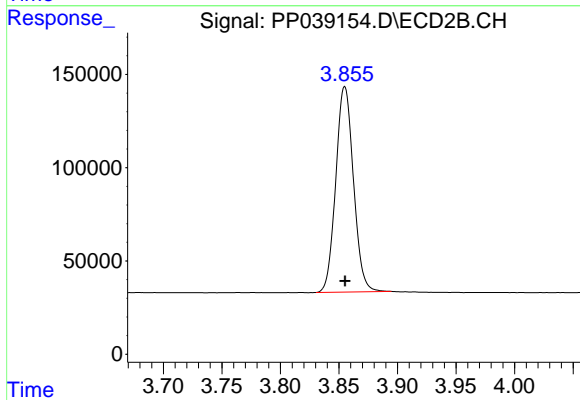
Volume Inj. : 2 µl  
 Signal #1 Phase : ZB-MR1 Signal #2 Phase: ZB-MR2  
 Signal #1 Info : 30Mx0.32mmx 0.50µ Signal #2 Info : 30M x 0.32mm x 0.25µm





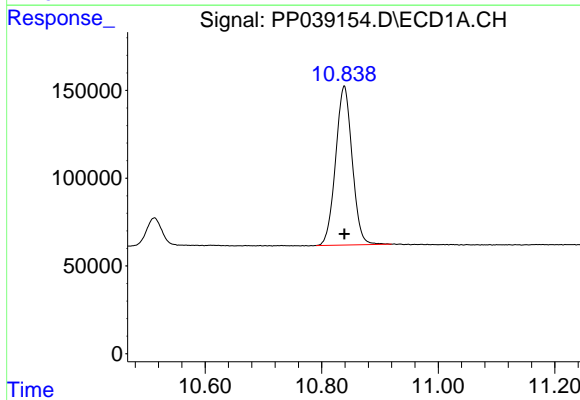
#1 Tetrachloro-m-xylene

R.T.: 4.870 min  
Delta R.T.: 0.000 min  
Response: 1831885  
Conc: 50.00 ng/ml



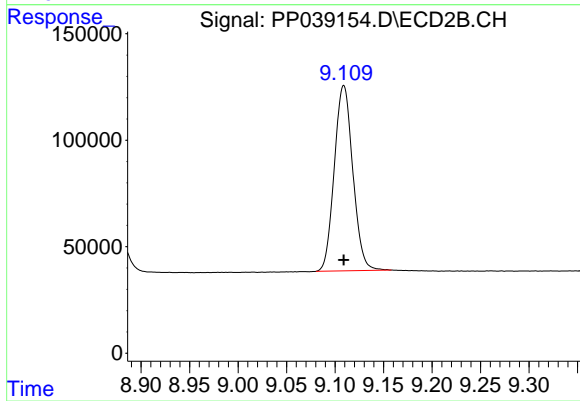
#1 Tetrachloro-m-xylene

R.T.: 3.855 min  
Delta R.T.: 0.000 min  
Response: 1159094  
Conc: 50.00 ng/ml



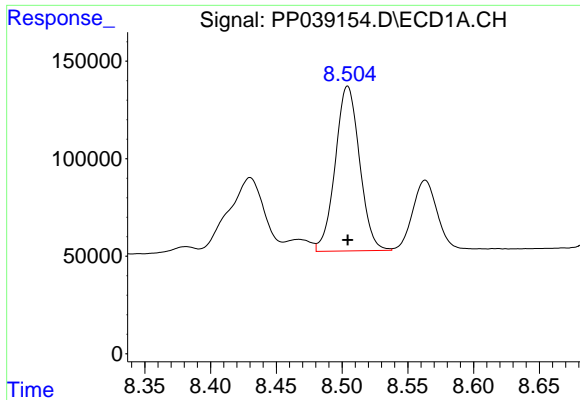
#2 Decachlorobiphenyl

R.T.: 10.839 min  
Delta R.T.: 0.000 min  
Response: 1783479  
Conc: 50.00 ng/ml



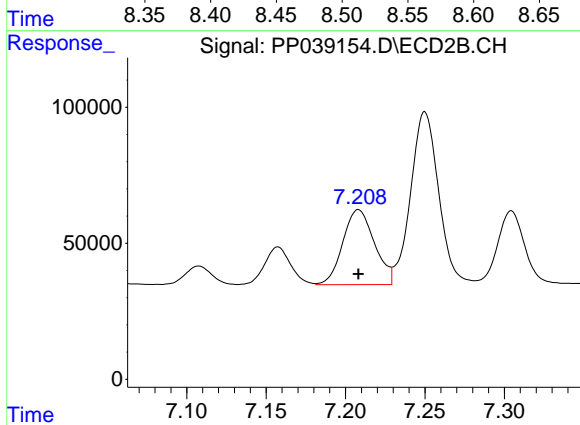
#2 Decachlorobiphenyl

R.T.: 9.109 min  
Delta R.T.: 0.000 min  
Response: 1156407  
Conc: 50.00 ng/ml



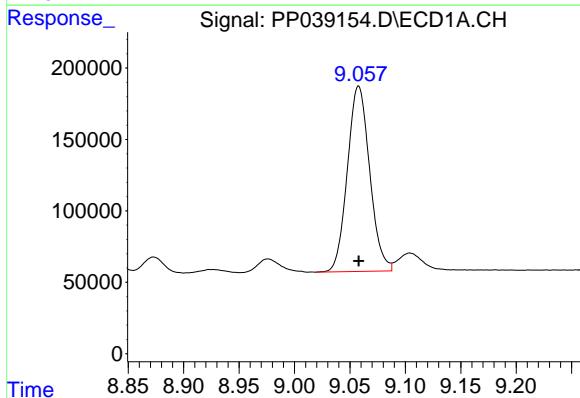
#36 AR-1262-1

R.T.: 8.504 min  
Delta R.T.: 0.000 min  
Response: 1089206  
Conc: 500.00 ng/ml



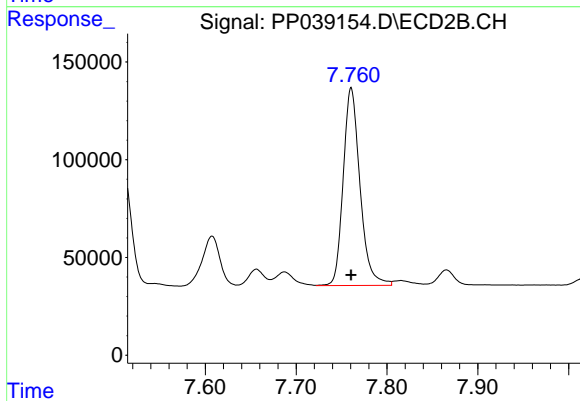
#36 AR-1262-1

R.T.: 7.208 min  
Delta R.T.: 0.000 min  
Response: 382539  
Conc: 500.00 ng/ml



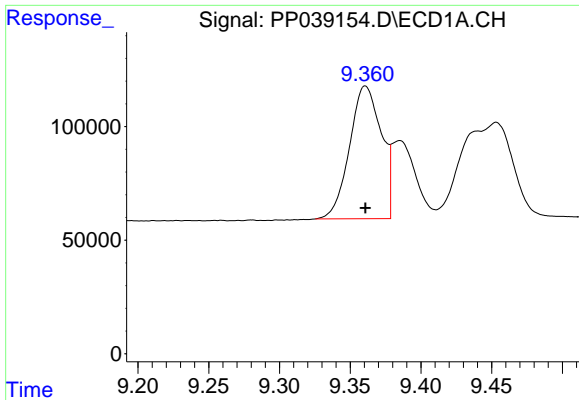
#37 AR-1262-2

R.T.: 9.058 min  
Delta R.T.: 0.000 min  
Response: 1816348  
Conc: 500.00 ng/ml



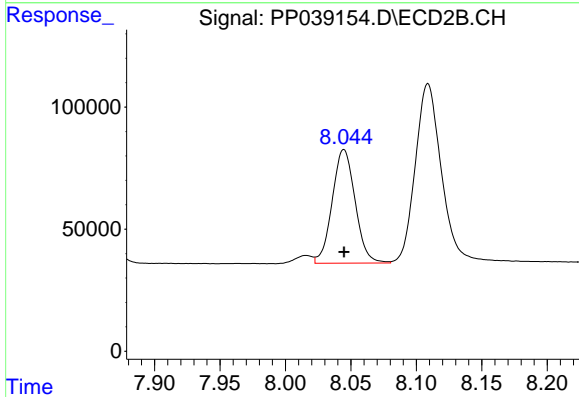
#37 AR-1262-2

R.T.: 7.761 min  
Delta R.T.: 0.000 min  
Response: 1299379  
Conc: 500.00 ng/ml



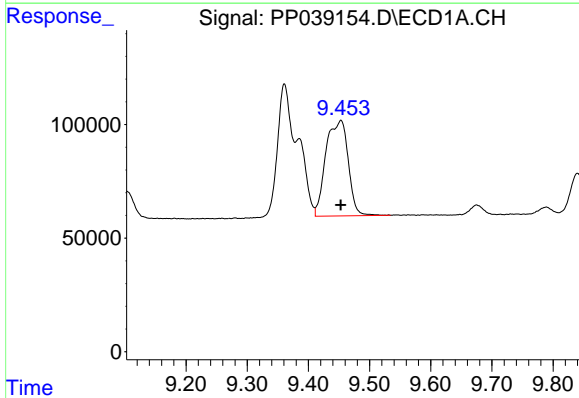
#38 AR-1262-3

R.T.: 9.361 min  
Delta R.T.: 0.000 min  
Response: 914603  
Conc: 500.00 ng/ml



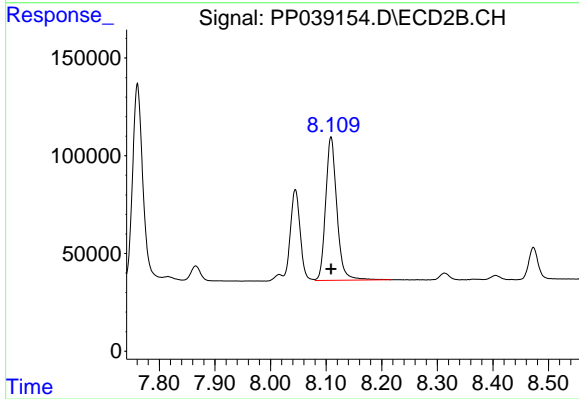
#38 AR-1262-3

R.T.: 8.045 min  
Delta R.T.: 0.000 min  
Response: 567342  
Conc: 500.00 ng/ml



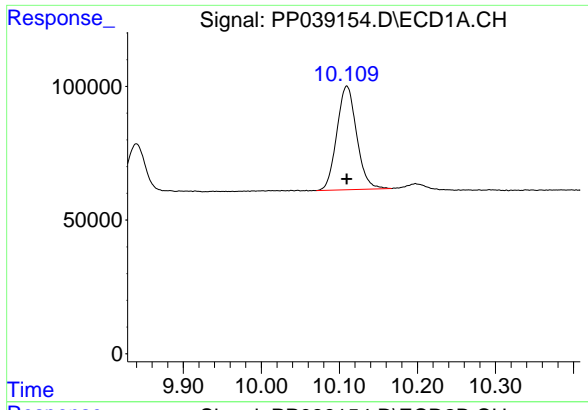
#39 AR-1262-4

R.T.: 9.453 min  
Delta R.T.: 0.000 min  
Response: 1064980  
Conc: 844.00 ng/ml



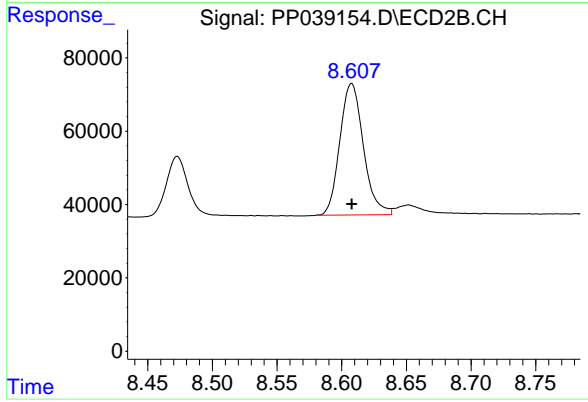
#39 AR-1262-4

R.T.: 8.109 min  
Delta R.T.: 0.000 min  
Response: 1030106  
Conc: 500.00 ng/ml



#40 AR-1262-5

R.T.: 10.110 min  
Delta R.T.: 0.000 min  
Response: 683624  
Conc: 500.00 ng/ml



#40 AR-1262-5

R.T.: 8.608 min  
Delta R.T.: 0.000 min  
Response: 455042  
Conc: 500.00 ng/ml