

Data Path : Z:\pestpcbsrv\HPCHEM1\ECD_P\Data\PP090221\
 Data File : PP039161.D
 Signal(s) : Signal #1: ECD1A.CH Signal #2: ECD2B.CH
 Acq On : 03 Sep 2021 1:59
 Operator : AJ\MA
 Sample : AR1268IC050
 Misc :
 ALS Vial : 34 Sample Multiplier: 1

Integration File signal 1: autoint1.e
 Integration File signal 2: autoint2.e
 Quant Time: Sep 03 03:38:18 2021
 Quant Method : Z:\pestpcbsrv\HPCHEM1\ECD_P\methods\PP090221.M
 Quant Title : GC EXTRACTABLES
 QLast Update : Fri Sep 03 03:38:03 2021
 Response via : Initial Calibration
 Integrator: ChemStation 6890 Scale Mode: Small noise peaks clipped

Volume Inj. : 2 µl
 Signal #1 Phase : ZB-MR1 Signal #2 Phase: ZB-MR2
 Signal #1 Info : 30Mx0.32mmx 0.50µ Signal #2 Info : 30M x 0.32mm x 0.25µm

Compound	RT#1	RT#2	Resp#1	Resp#2	ng/ml	ng/ml

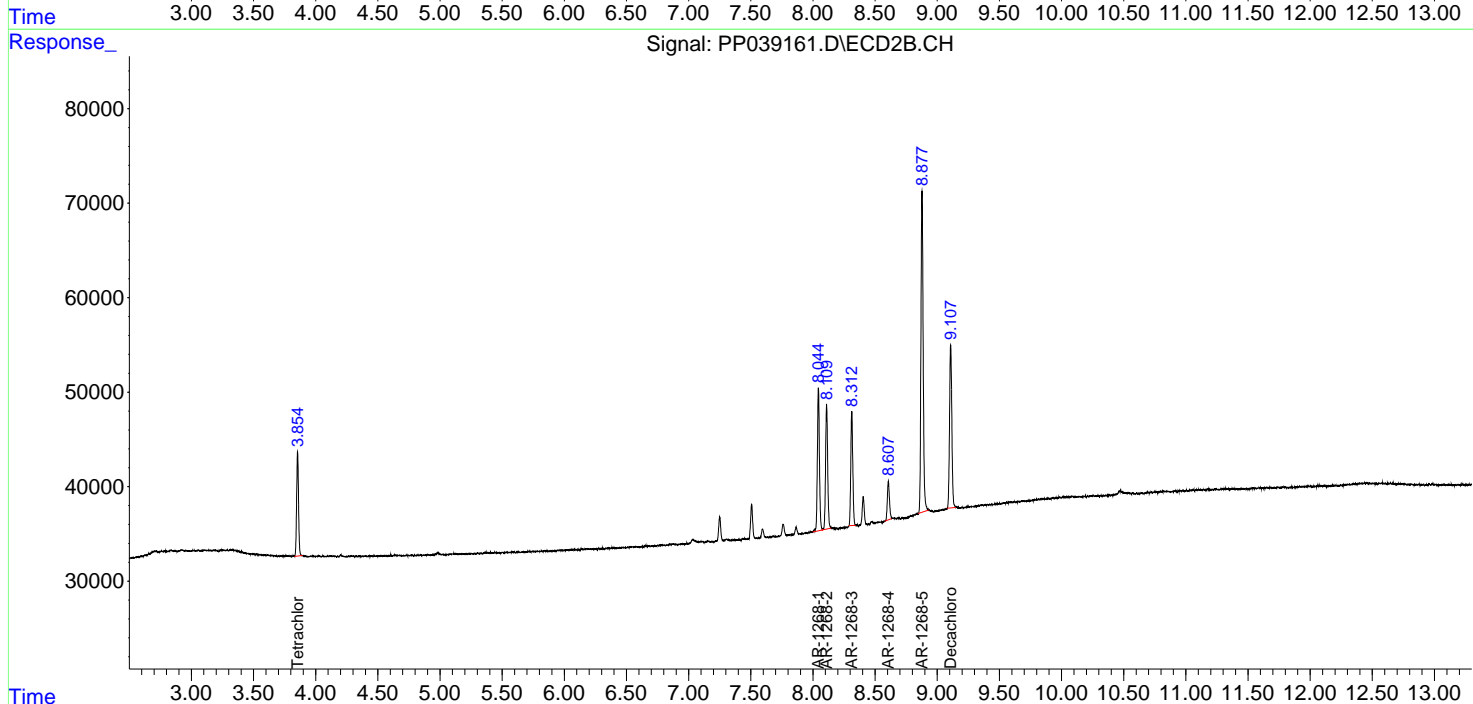
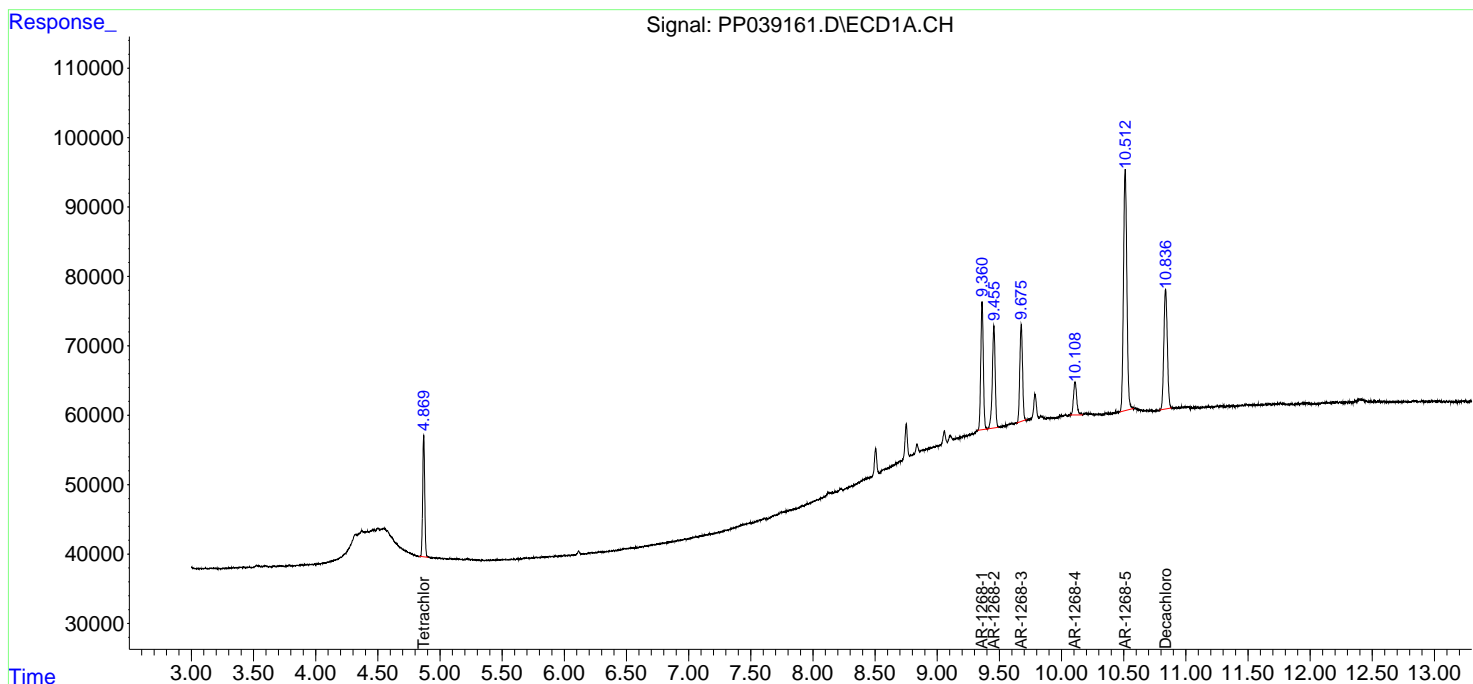
System Monitoring Compounds						
1) SA Tetrachlo...	4.869	3.854	201472	116397	5.176	4.811
2) SA Decachlor...	10.837	9.108	335686	220346	5.274	5.306
Target Compounds						
41) L9 AR-1268-1	9.361	8.044	262600	172649	53.532	51.131
42) L9 AR-1268-2	9.456	8.110	237350	154884	50.966	48.937
43) L9 AR-1268-3	9.676	8.312	213166	134946	52.588	50.304
44) L9 AR-1268-4	10.109	8.607	86392	47911	52.542	44.814
45) L9 AR-1268-5	10.512	8.877	658160	424908	51.913	49.646

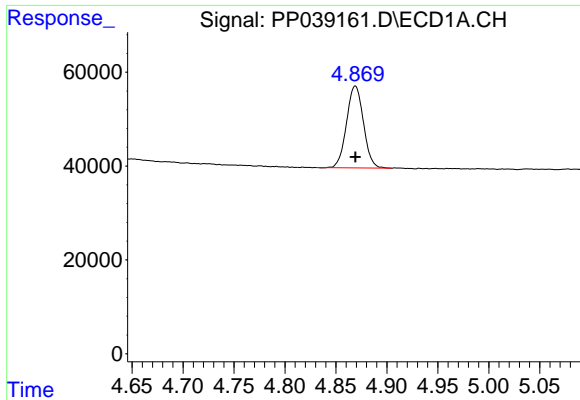
(f)=RT Delta > 1/2 Window (#)=Amounts differ by > 25% (m)=manual int.

Data Path : Z:\pestpcbsrv\HPCHEM1\ECD_P\Data\PP090221\
 Data File : PP039161.D
 Signal(s) : Signal #1: ECD1A.CH Signal #2: ECD2B.CH
 Acq On : 03 Sep 2021 1:59
 Operator : AJ\MA
 Sample : AR1268ICC050
 Misc :
 ALS Vial : 34 Sample Multiplier: 1

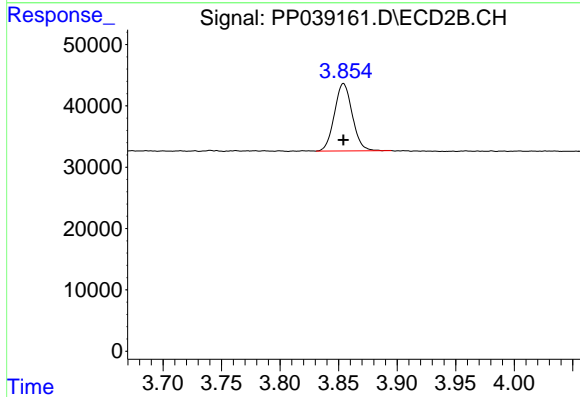
Integration File signal 1: autoint1.e
 Integration File signal 2: autoint2.e
 Quant Time: Sep 03 03:38:18 2021
 Quant Method : Z:\pestpcbsrv\HPCHEM1\ECD_P\methods\PP090221.M
 Quant Title : GC EXTRACTABLES
 QLast Update : Fri Sep 03 03:38:03 2021
 Response via : Initial Calibration
 Integrator: ChemStation 6890 Scale Mode: Small noise peaks clipped

Volume Inj. : 2 µl
 Signal #1 Phase : ZB-MR1 Signal #2 Phase: ZB-MR2
 Signal #1 Info : 30Mx0.32mmx 0.50µ Signal #2 Info : 30M x 0.32mm x 0.25µm

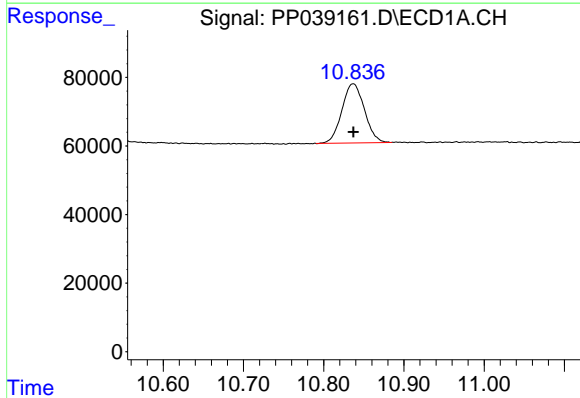




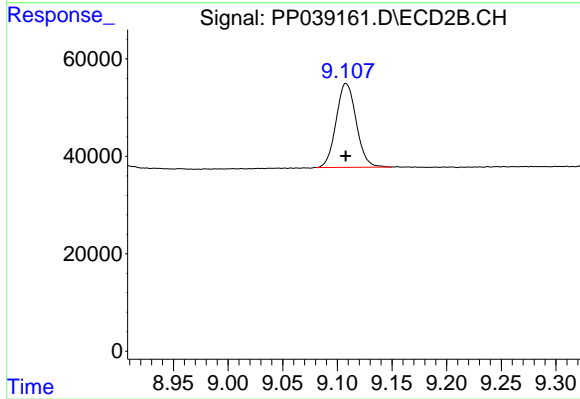
#1 Tetrachloro-m-xylene
 R.T.: 4.869 min
 Delta R.T.: 0.000 min
 Response: 201472
 Conc: 5.18 ng/ml



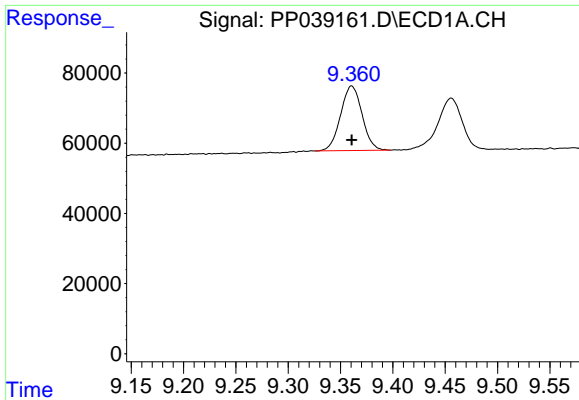
#1 Tetrachloro-m-xylene
 R.T.: 3.854 min
 Delta R.T.: 0.000 min
 Response: 116397
 Conc: 4.81 ng/ml



#2 Decachlorobiphenyl
 R.T.: 10.837 min
 Delta R.T.: 0.000 min
 Response: 335686
 Conc: 5.27 ng/ml

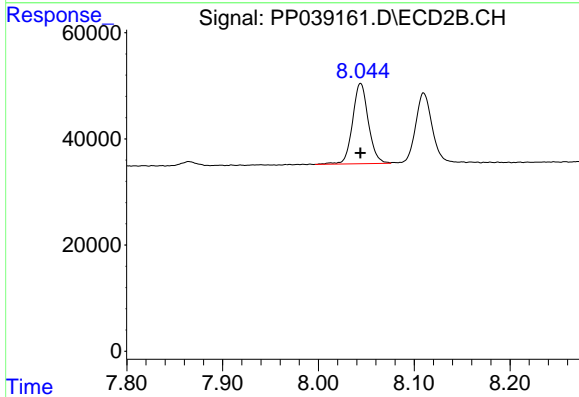


#2 Decachlorobiphenyl
 R.T.: 9.108 min
 Delta R.T.: 0.000 min
 Response: 220346
 Conc: 5.31 ng/ml



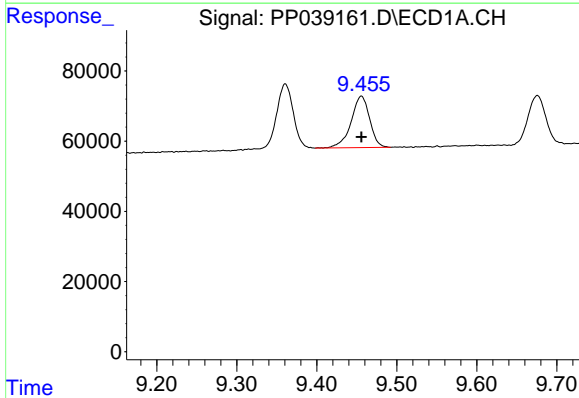
#41 AR-1268-1

R.T.: 9.361 min
 Delta R.T.: 0.000 min
 Response: 262600
 Conc: 53.53 ng/ml



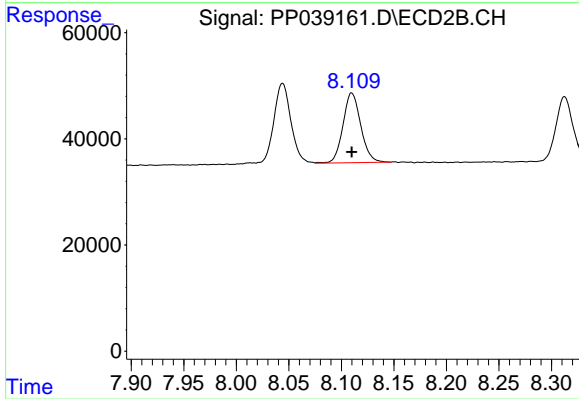
#41 AR-1268-1

R.T.: 8.044 min
 Delta R.T.: 0.000 min
 Response: 172649
 Conc: 51.13 ng/ml



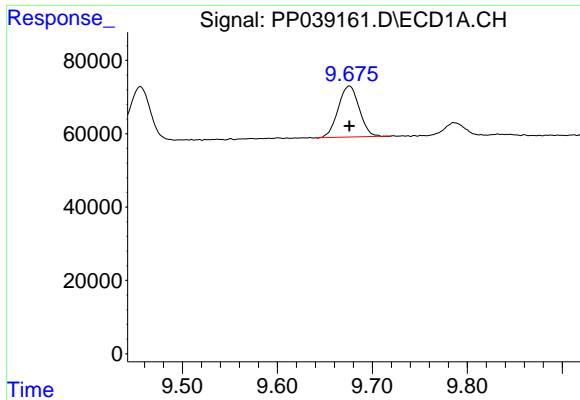
#42 AR-1268-2

R.T.: 9.456 min
 Delta R.T.: 0.000 min
 Response: 237350
 Conc: 50.97 ng/ml



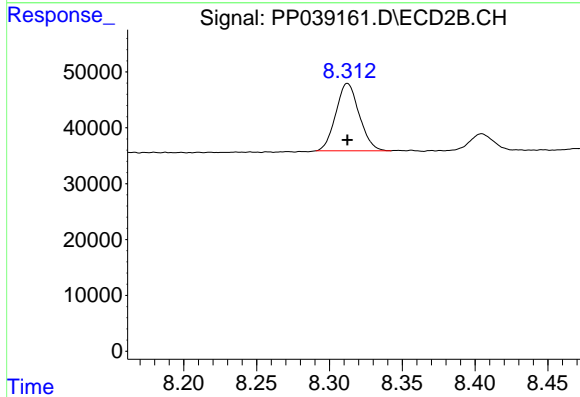
#42 AR-1268-2

R.T.: 8.110 min
 Delta R.T.: 0.000 min
 Response: 154884
 Conc: 48.94 ng/ml



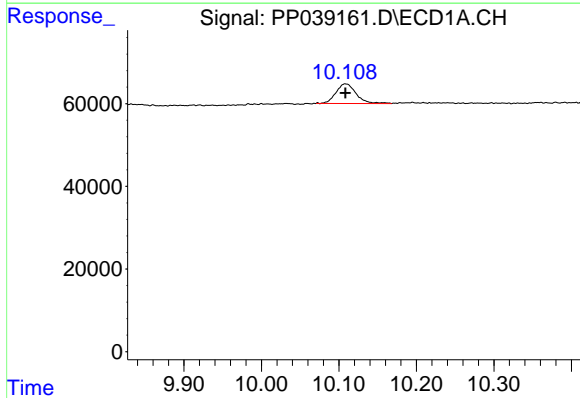
#43 AR-1268-3

R.T.: 9.676 min
 Delta R.T.: 0.000 min
 Response: 213166
 Conc: 52.59 ng/ml



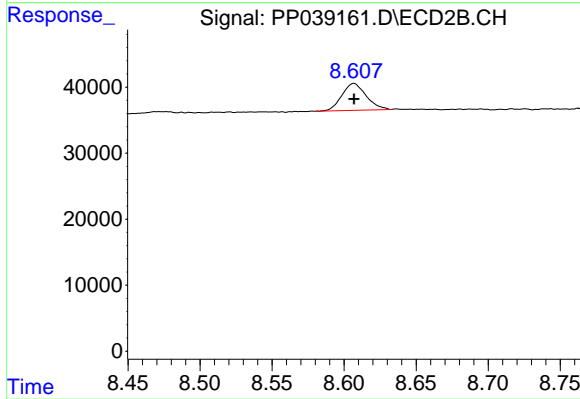
#43 AR-1268-3

R.T.: 8.312 min
 Delta R.T.: 0.000 min
 Response: 134946
 Conc: 50.30 ng/ml



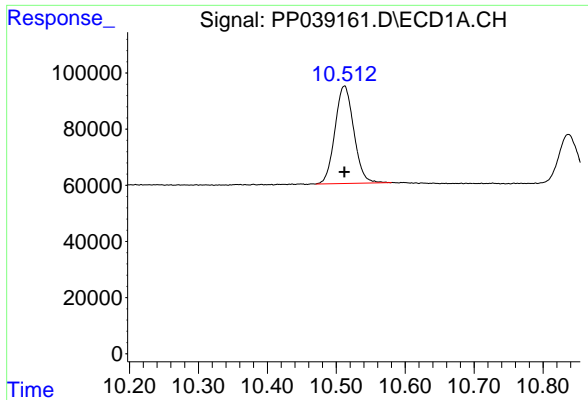
#44 AR-1268-4

R.T.: 10.109 min
 Delta R.T.: 0.000 min
 Response: 86392
 Conc: 52.54 ng/ml



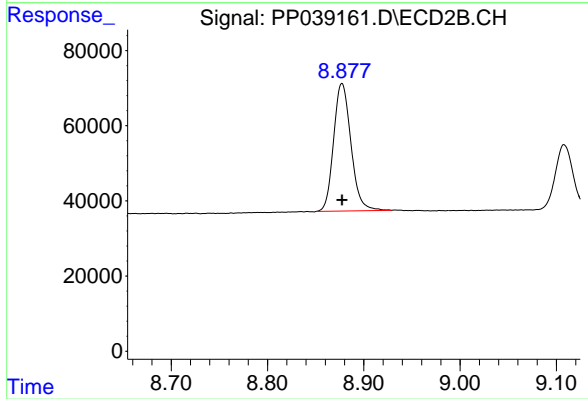
#44 AR-1268-4

R.T.: 8.607 min
 Delta R.T.: 0.000 min
 Response: 47911
 Conc: 44.81 ng/ml



#45 AR-1268-5

R.T.: 10.512 min
Delta R.T.: 0.000 min
Response: 658160
Conc: 51.91 ng/ml



#45 AR-1268-5

R.T.: 8.877 min
Delta R.T.: 0.000 min
Response: 424908
Conc: 49.65 ng/ml