

Data Path : P:\HPCHEM1\ECD_P\Data\PP090315\
 Data File : PP011539.D
 Signal(s) : Signal #1: ECD1A.CH Signal #2: ECD2B.CH
 Acq On : 03 Sep 2015 13:34
 Operator : IZ/UA
 Sample : AR1262ICC500
 Misc :
 ALS Vial : 13 Sample Multiplier: 1

Instrument :
 ECD_P
 ClientSampleId :
 AR1262ICC500

Integration File signal 1: autoint1.e
 Integration File signal 2: autoint2.e
 Quant Time: Sep 03 14:56:28 2015
 Quant Method : P:\HPCHEM1\ECD_P\methods\PP090315.M
 Quant Title : GC EXTRACTABLES
 QLast Update : Thu Sep 03 14:54:22 2015
 Response via : Initial Calibration
 Integrator: ChemStation 6890 Scale Mode: Small noise peaks clipped

Volume Inj. : 2 µl
 Signal #1 Phase : ZB-MR1 Signal #2 Phase: ZB-MR2
 Signal #1 Info : 30Mx0.32mmx 0.50µ Signal #2 Info : 30M x 0.32mm x 0.25µm

Compound	RT#1	RT#2	Resp#1	Resp#2	ng/ml	ng/ml

System Monitoring Compounds						
1) SA Tetrachlo...	5.171	4.190	2247109	3024179	50.904	51.957
2) SA Decachlor...	11.502	9.290	1854607	2736090	48.571	48.247
Target Compounds						
36) L8 AR-1262-1	7.970	6.938	925071	1809722	500.000	500.000
37) L8 AR-1262-2	8.230	7.302	1113176	2635067	500.000	500.000
38) L8 AR-1262-3	8.622	7.564	1550571	2203563	500.000	500.000
39) L8 AR-1262-4	8.890	7.799	1481877	4673857	500.000	500.000
40) L8 AR-1262-5	9.266	8.149	2805107	3440473	500.000	500.000

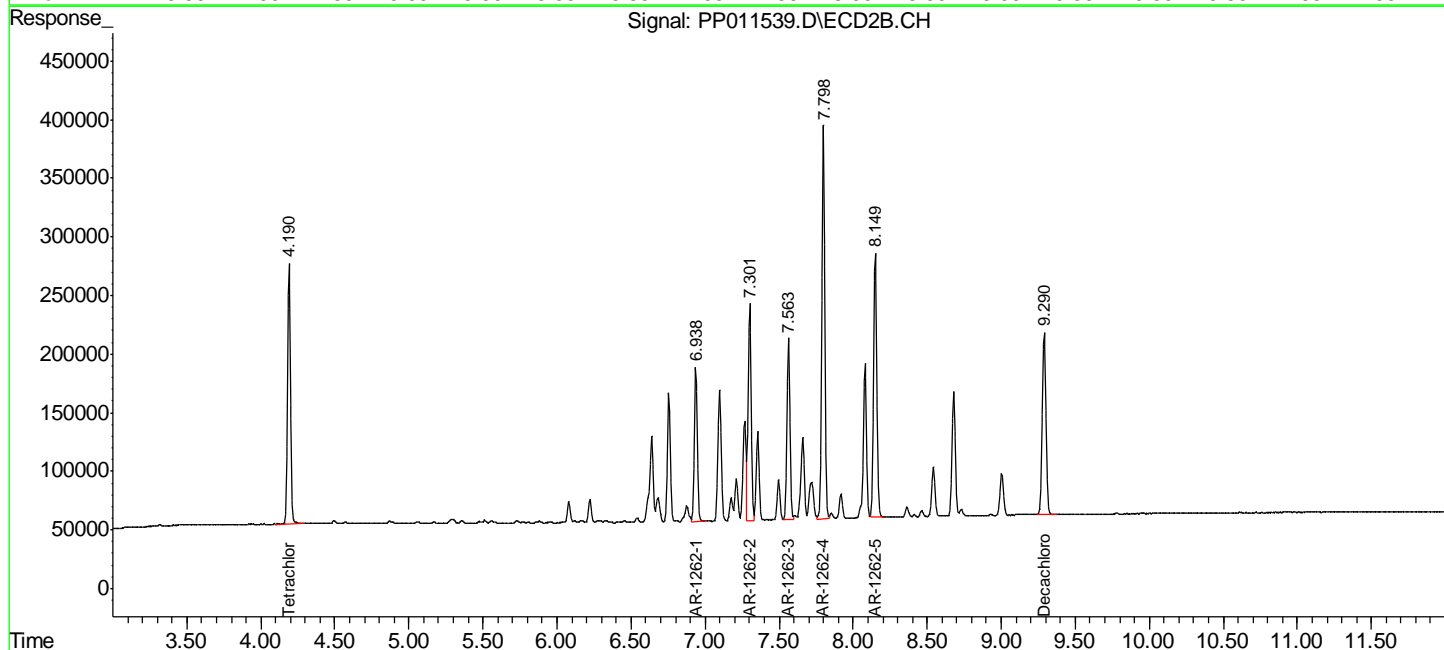
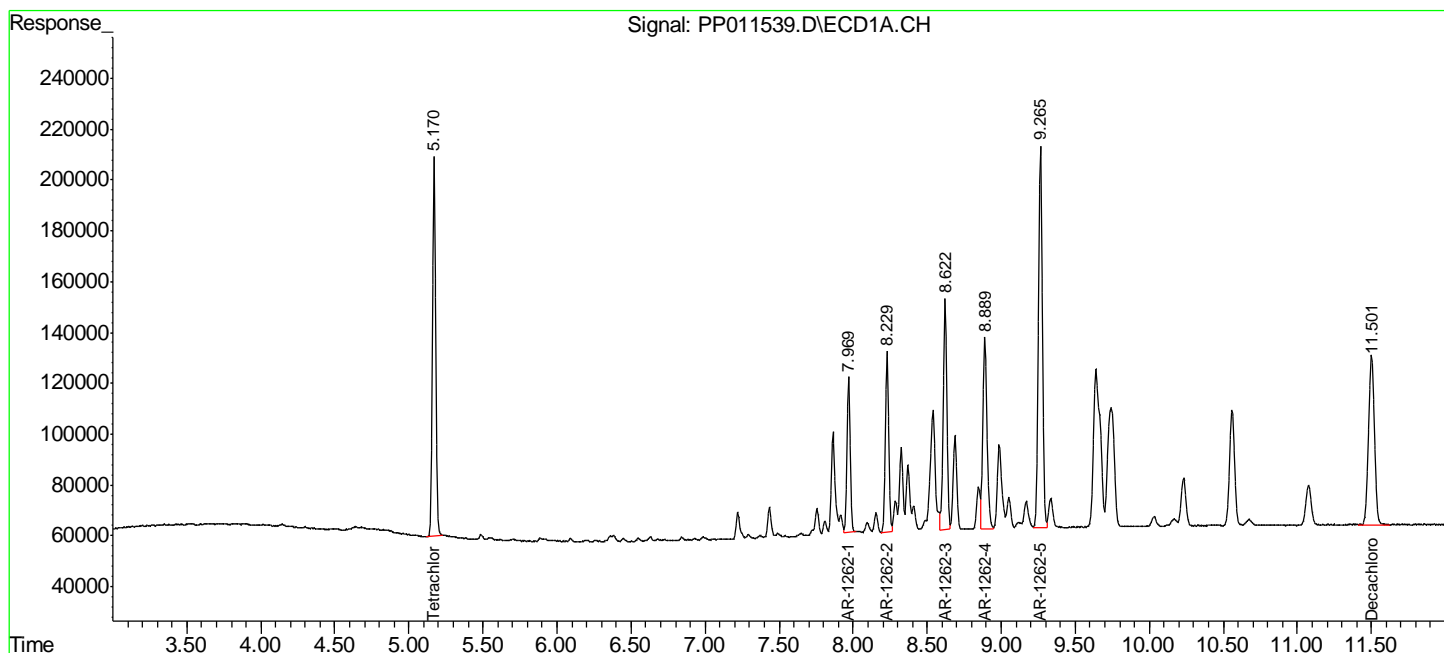
(f)=RT Delta > 1/2 Window (#)=Amounts differ by > 25% (m)=manual int.

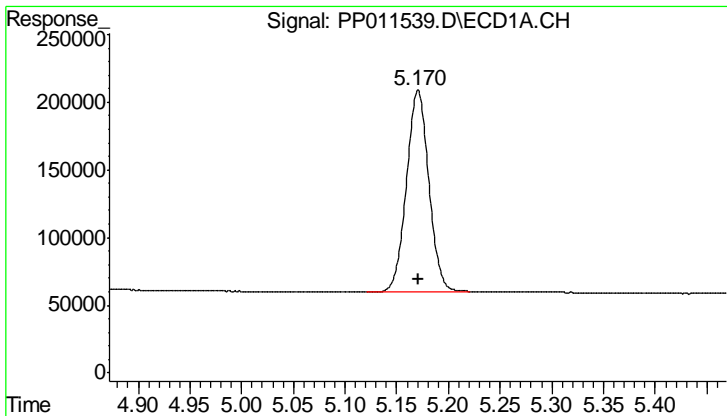
Data Path : P:\HPCHEM1\ECD_P\Data\PP090315\
 Data File : PP011539.D
 Signal(s) : Signal #1: ECD1A.CH Signal #2: ECD2B.CH
 Acq On : 03 Sep 2015 13:34
 Operator : IZ/UA
 Sample : AR1262ICC500
 Misc :
 ALS Vial : 13 Sample Multiplier: 1

Instrument :
 ECD_P
 ClientSampled :
 AR1262ICC500

Integration File signal 1: autoint1.e
 Integration File signal 2: autoint2.e
 Quant Time: Sep 03 14:56:28 2015
 Quant Method : P:\HPCHEM1\ECD_P\methods\PP090315.M
 Quant Title : GC EXTRACTABLES
 QLast Update : Thu Sep 03 14:54:22 2015
 Response via : Initial Calibration
 Integrator: ChemStation 6890 Scale Mode: Small noise peaks clipped

Volume Inj. : 2 µl
 Signal #1 Phase : ZB-MR1 Signal #2 Phase: ZB-MR2
 Signal #1 Info : 30Mx0.32mmx 0.50µ Signal #2 Info : 30M x 0.32mm x 0.25µm

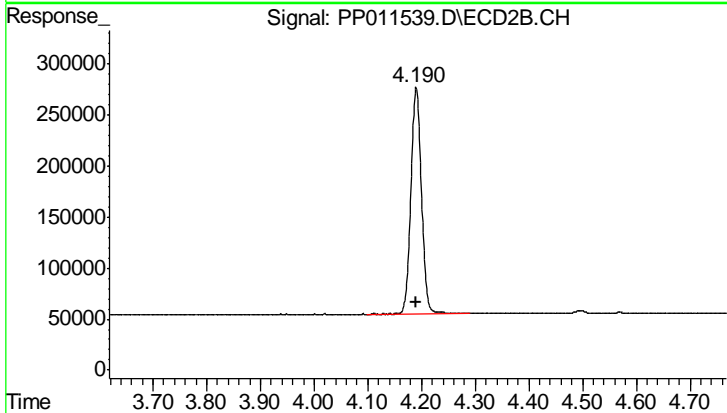




#1 Tetrachloro-m-xylene

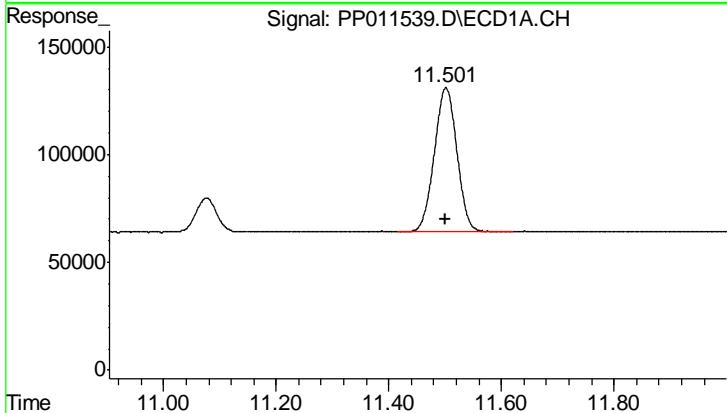
R.T.: 5.171 min
 Delta R.T.: 0.000 min
 Response: 2247109
 Conc: 50.90 ng/ml

Instrument :
 ECD_P
 ClientSampleId :
 AR1262ICC500



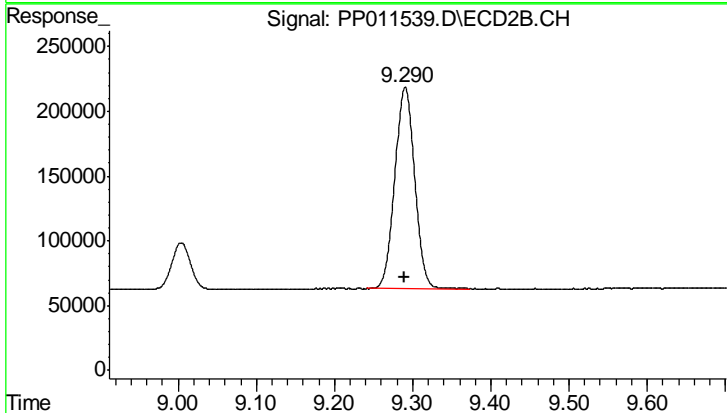
#1 Tetrachloro-m-xylene

R.T.: 4.190 min
 Delta R.T.: 0.000 min
 Response: 3024179
 Conc: 51.96 ng/ml



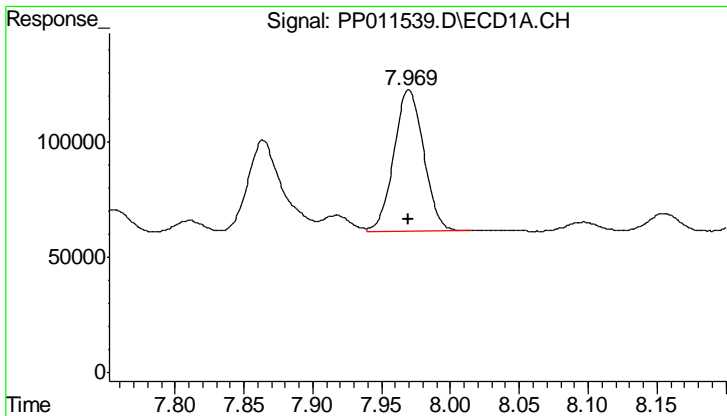
#2 Decachlorobiphenyl

R.T.: 11.502 min
 Delta R.T.: 0.000 min
 Response: 1854607
 Conc: 48.57 ng/ml



#2 Decachlorobiphenyl

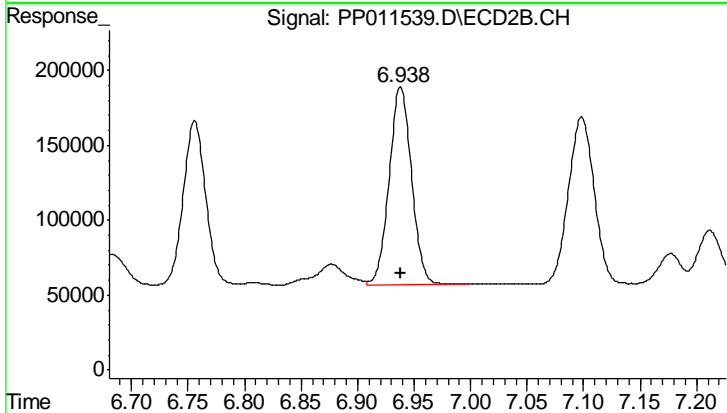
R.T.: 9.290 min
 Delta R.T.: 0.000 min
 Response: 2736090
 Conc: 48.25 ng/ml



#36 AR-1262-1

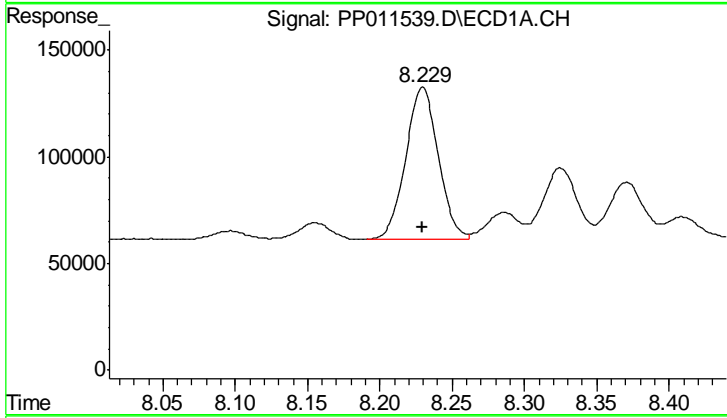
R.T.: 7.970 min
 Delta R.T.: 0.000 min
 Response: 925071
 Conc: 500.00 ng/ml

Instrument :
 ECD_P
 ClientSampled :
 AR1262ICC500



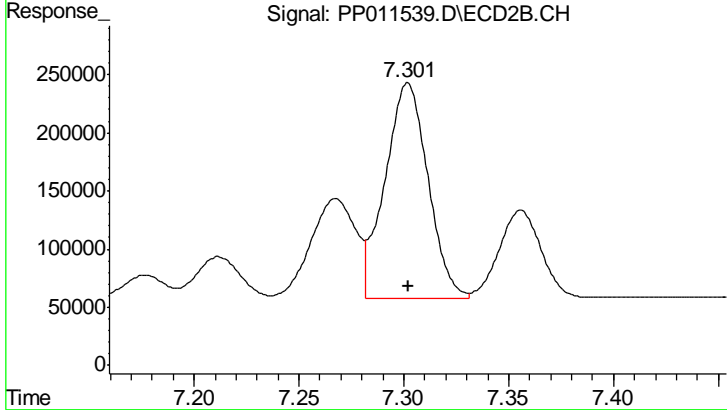
#36 AR-1262-1

R.T.: 6.938 min
 Delta R.T.: 0.000 min
 Response: 1809722
 Conc: 500.00 ng/ml



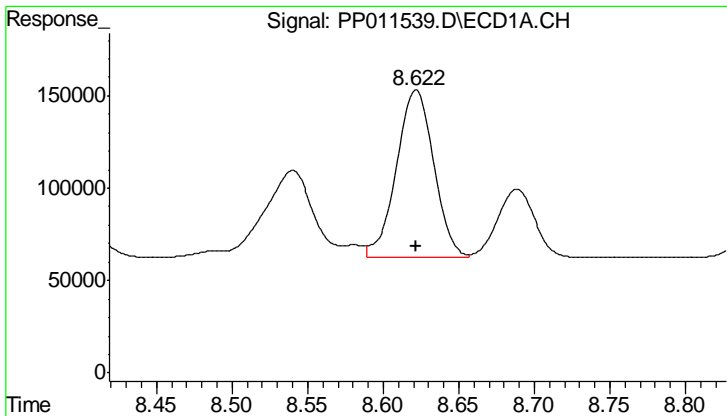
#37 AR-1262-2

R.T.: 8.230 min
 Delta R.T.: 0.000 min
 Response: 1113176
 Conc: 500.00 ng/ml



#37 AR-1262-2

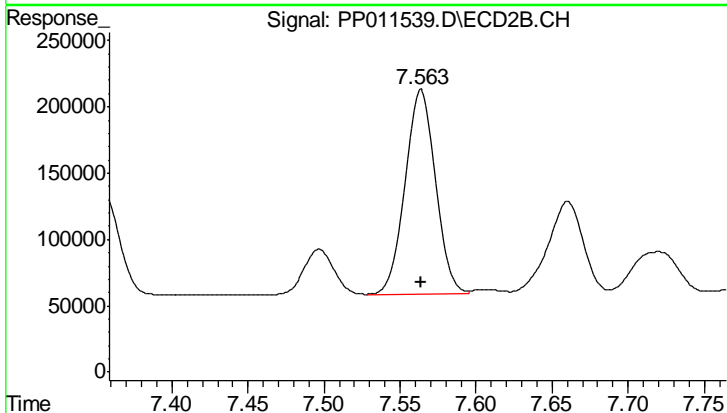
R.T.: 7.302 min
 Delta R.T.: 0.000 min
 Response: 2635067
 Conc: 500.00 ng/ml



#38 AR-1262-3

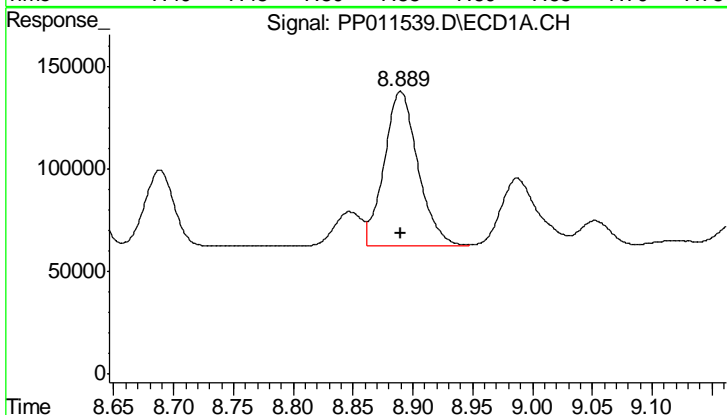
R.T.: 8.622 min
 Delta R.T.: 0.000 min
 Response: 1550571
 Conc: 500.00 ng/ml

Instrument :
 ECD_P
 ClientSampleId :
 AR1262ICC500



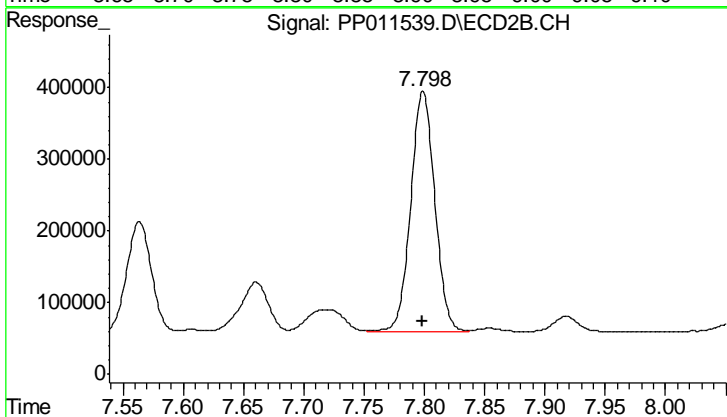
#38 AR-1262-3

R.T.: 7.564 min
 Delta R.T.: 0.000 min
 Response: 2203563
 Conc: 500.00 ng/ml



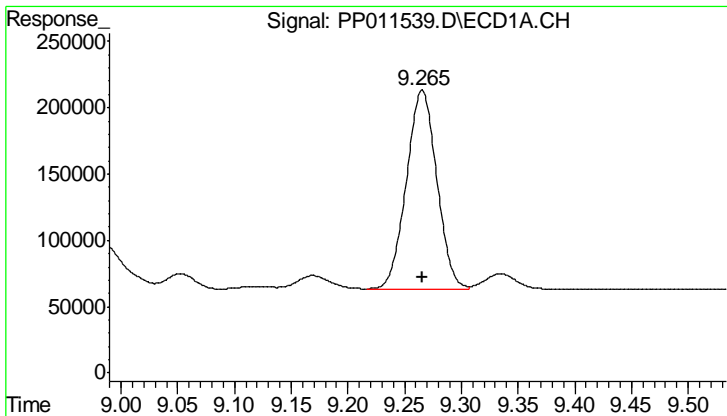
#39 AR-1262-4

R.T.: 8.890 min
 Delta R.T.: 0.000 min
 Response: 1481877
 Conc: 500.00 ng/ml



#39 AR-1262-4

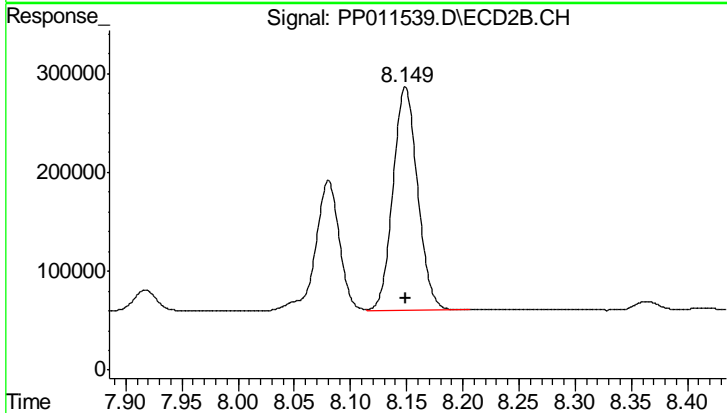
R.T.: 7.799 min
 Delta R.T.: 0.000 min
 Response: 4673857
 Conc: 500.00 ng/ml



#40 AR-1262-5

R.T.: 9.266 min
Delta R.T.: 0.000 min
Response: 2805107
Conc: 500.00 ng/ml

Instrument :
ECD_P
ClientSampled :
AR1262ICC500



#40 AR-1262-5

R.T.: 8.149 min
Delta R.T.: 0.000 min
Response: 3440473
Conc: 500.00 ng/ml