

Data Path : Z:\pestpcbsrv\HPCHEM1\ECD\_P\Data\PP090324\  
 Data File : PP067073.D  
 Signal(s) : Signal #1: ECD1A.ch Signal #2: ECD2B.ch  
 Acq On : 04 Sep 2024 07:07  
 Operator : YP\AJ  
 Sample : AR1242ICC250  
 Misc :  
 ALS Vial : 13 Sample Multiplier: 1

**Instrument :**  
 ECD\_P  
**ClientSampleId :**  
 AR1242ICC250

**Manual Integrations**  
**APPROVED**

Reviewed By :Yogesh Patel 09/05/2024  
 Supervised By :Ankita Jodhani 09/05/2024

Integration File signal 1: autoint1.e  
 Integration File signal 2: autoint2.e  
 Quant Time: Sep 04 07:26:35 2024  
 Quant Method : Z:\pestpcbsrv\HPCHEM1\ECD\_P\methods\PP090324.M  
 Quant Title : GC EXTRACTABLES  
 QLast Update : Wed Sep 04 07:18:50 2024  
 Response via : Initial Calibration  
 Integrator: ChemStation

Volume Inj. : 2 µl  
 Signal #1 Phase : ZB-MR1 Signal #2 Phase: ZB-MR2  
 Signal #1 Info : 30Mx0.32mmx 0.50µ Signal #2 Info : 30M x 0.32mm x 0.25µm

Compound	RT#1	RT#2	Resp#1	Resp#2	ng/ml	ng/ml
-----						
System Monitoring Compounds						
1) SA Tetrachlo...	4.620	3.911	17138529	15605753	27.653	27.179
2) SA Decachlor...	10.469	9.040	21910191	23710616	26.004	26.563
Target Compounds						
16) L4 AR-1242-1	5.793	5.017	4448388	3990324	288.468	260.081m
17) L4 AR-1242-2	5.815	5.036	7664651	6685243	282.477	275.721
18) L4 AR-1242-3	5.877	5.218	5042430	3413583	283.823	246.417
19) L4 AR-1242-4	5.976	5.300	3593572	4128709	281.515	255.697
20) L4 AR-1242-5	6.713	5.831	4235540	4954229	263.167	271.617
-----						

(f)=RT Delta > 1/2 Window (#)=Amounts differ by > 25% (m)=manual int.

Data Path : Z:\pestpcbsrv\HPCHEM1\ECD\_P\Data\PP090324\  
 Data File : PP067073.D  
 Signal(s) : Signal #1: ECD1A.ch Signal #2: ECD2B.ch  
 Acq On : 04 Sep 2024 07:07  
 Operator : YP\AJ  
 Sample : AR1242ICC250  
 Misc :  
 ALS Vial : 13 Sample Multiplier: 1

**Instrument :**

ECD\_P

**ClientSampleId :**

AR1242ICC250

**Manual Integrations**

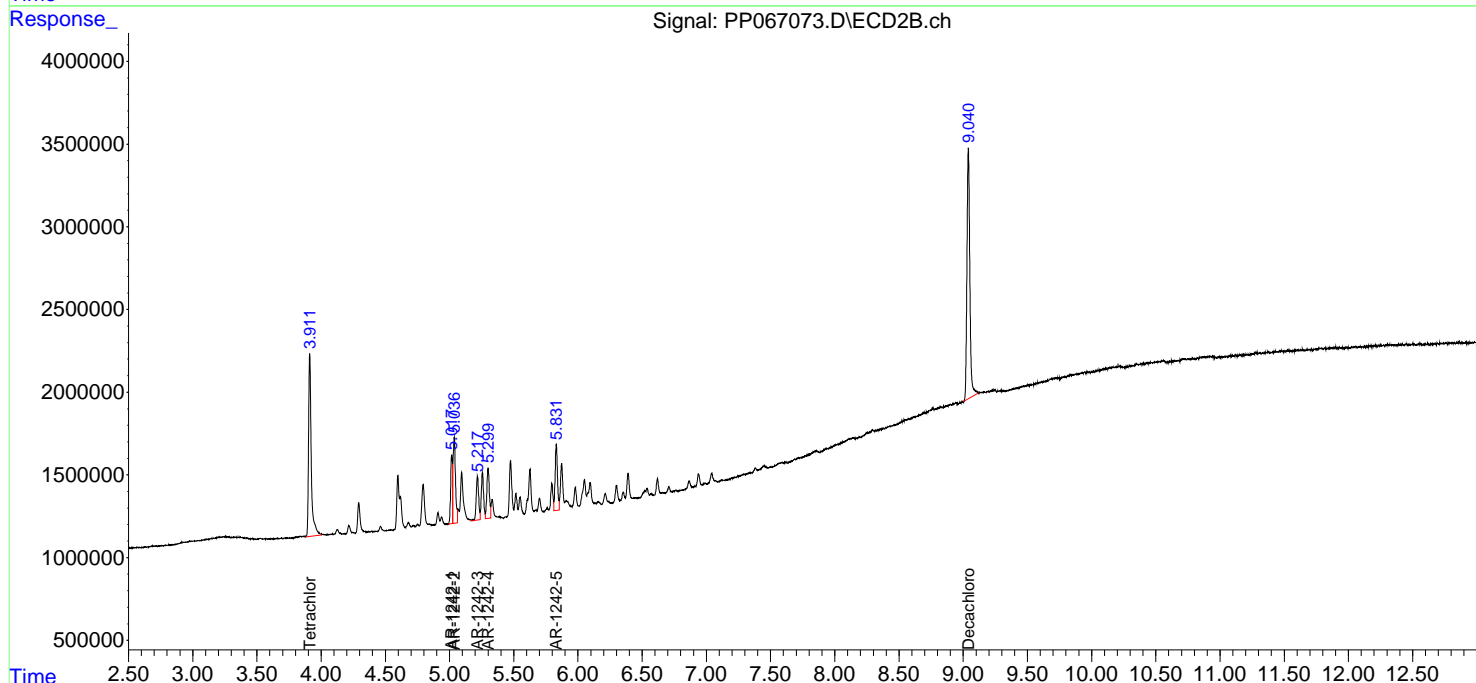
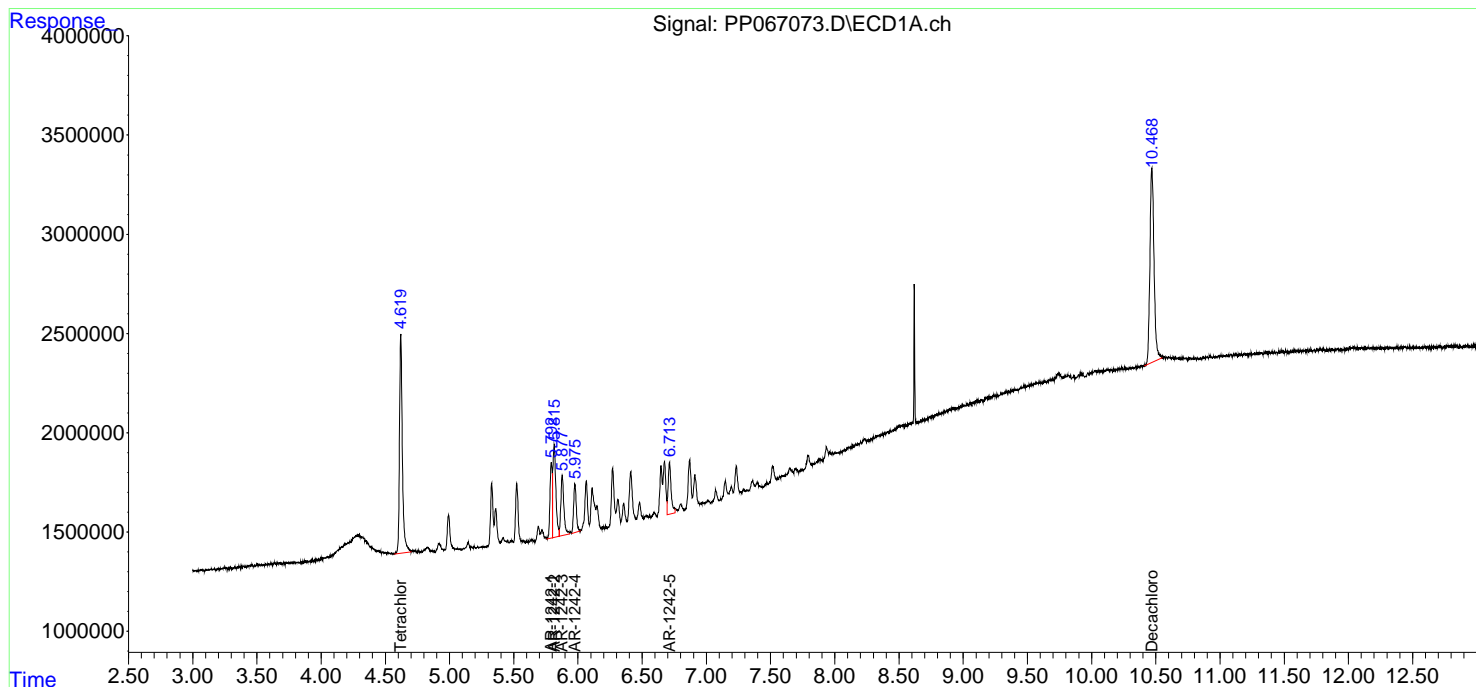
**APPROVED**

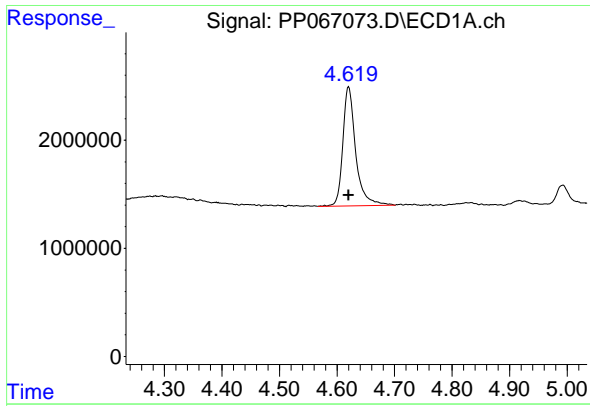
Reviewed By :Yogesh Patel 09/05/2024

Supervised By :Ankita Jodhani 09/05/2024

Integration File signal 1: autoint1.e  
 Integration File signal 2: autoint2.e  
 Quant Time: Sep 04 07:26:35 2024  
 Quant Method : Z:\pestpcbsrv\HPCHEM1\ECD\_P\methods\PP090324.M  
 Quant Title : GC EXTRACTABLES  
 QLast Update : Wed Sep 04 07:18:50 2024  
 Response via : Initial Calibration  
 Integrator: ChemStation

Volume Inj. : 2 µl  
 Signal #1 Phase : ZB-MR1 Signal #2 Phase: ZB-MR2  
 Signal #1 Info : 30Mx0.32mmx 0.50µ Signal #2 Info : 30M x 0.32mm x 0.25µm





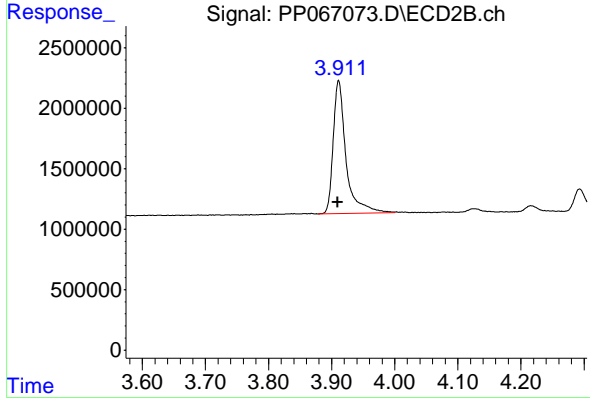
#1 Tetrachloro-m-xylene

R.T.: 4.620 min  
 Delta R.T.: 0.000 min  
 Response: 17138529  
 Conc: 27.65 ng/ml

Instrument : ECD\_P  
 Client Sample Id : AR1242ICC250

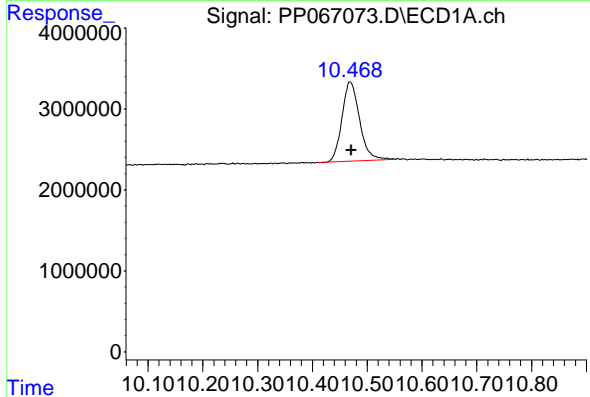
Manual Integrations  
 APPROVED

Reviewed By :Yogesh Patel 09/05/2024  
 Supervised By :Ankita Jodhani 09/05/2024



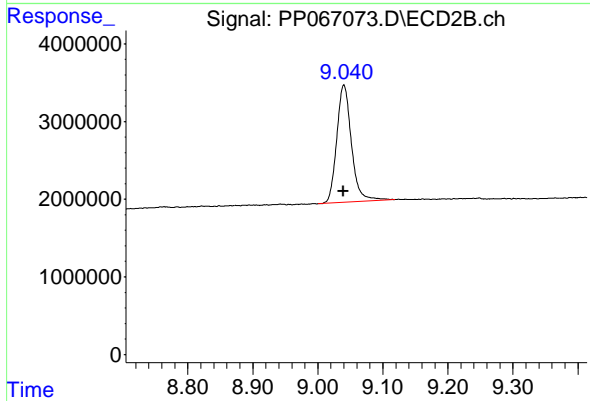
#1 Tetrachloro-m-xylene

R.T.: 3.911 min  
 Delta R.T.: 0.002 min  
 Response: 15605753  
 Conc: 27.18 ng/ml



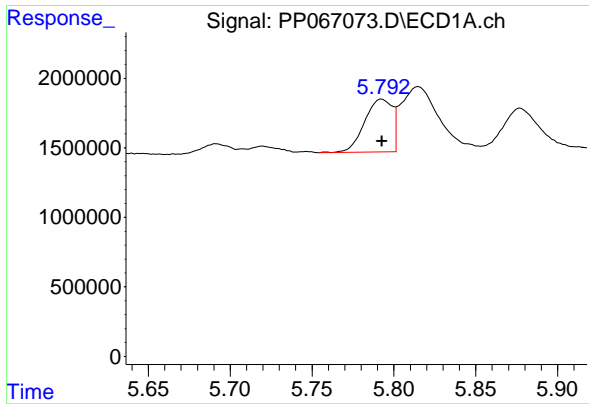
#2 Decachlorobiphenyl

R.T.: 10.469 min  
 Delta R.T.: -0.002 min  
 Response: 21910191  
 Conc: 26.00 ng/ml



#2 Decachlorobiphenyl

R.T.: 9.040 min  
 Delta R.T.: 0.000 min  
 Response: 23710616  
 Conc: 26.56 ng/ml



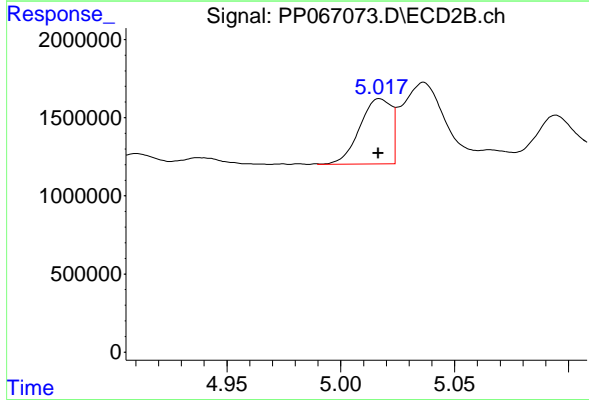
#16 AR-1242-1

R.T.: 5.793 min  
 Delta R.T.: 0.000 min  
 Response: 4448388  
 Conc: 288.47 ng/ml

Instrument : ECD\_P  
 Client Sample Id : AR1242ICC250

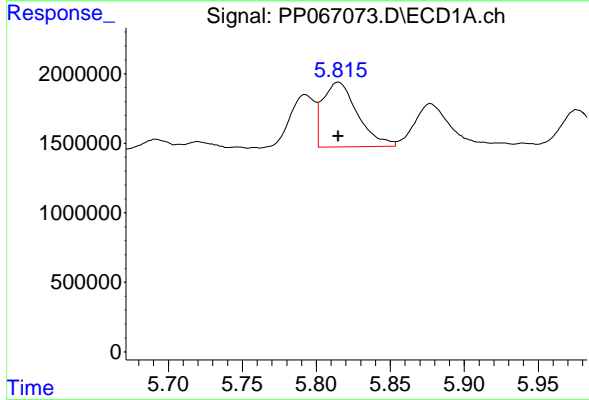
Manual Integrations  
 APPROVED

Reviewed By :Yogesh Patel 09/05/2024  
 Supervised By :Ankita Jodhani 09/05/2024



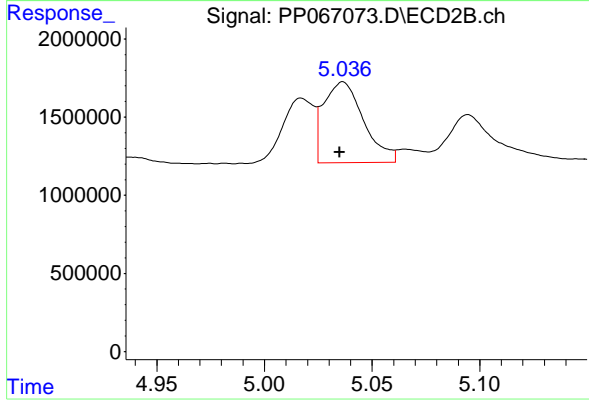
#16 AR-1242-1

R.T.: 5.017 min  
 Delta R.T.: 0.000 min  
 Response: 3990324  
 Conc: 260.08 ng/ml m



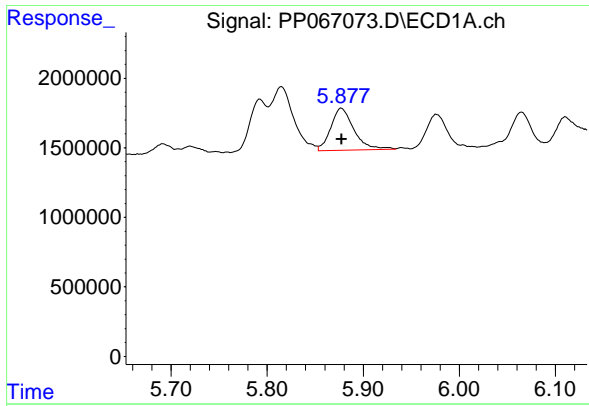
#17 AR-1242-2

R.T.: 5.815 min  
 Delta R.T.: 0.000 min  
 Response: 7664651  
 Conc: 282.48 ng/ml



#17 AR-1242-2

R.T.: 5.036 min  
 Delta R.T.: 0.002 min  
 Response: 6685243  
 Conc: 275.72 ng/ml



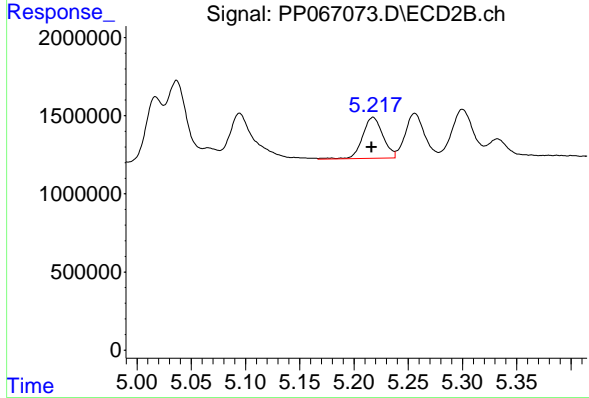
#18 AR-1242-3

R.T.: 5.877 min  
 Delta R.T.: 0.000 min  
 Response: 5042430  
 Conc: 283.82 ng/ml

Instrument : ECD\_P  
 Client Sample Id : AR1242ICC250

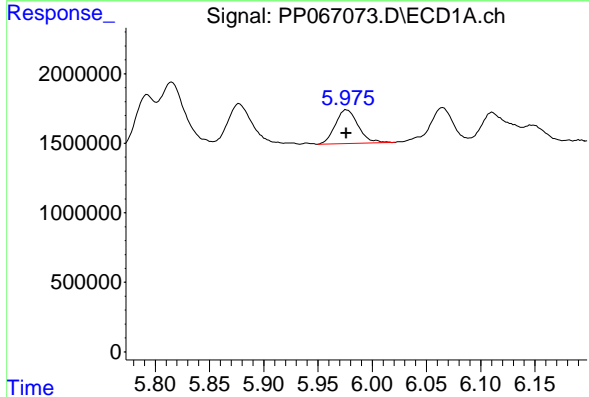
Manual Integrations  
 APPROVED

Reviewed By :Yogesh Patel 09/05/2024  
 Supervised By :Ankita Jodhani 09/05/2024



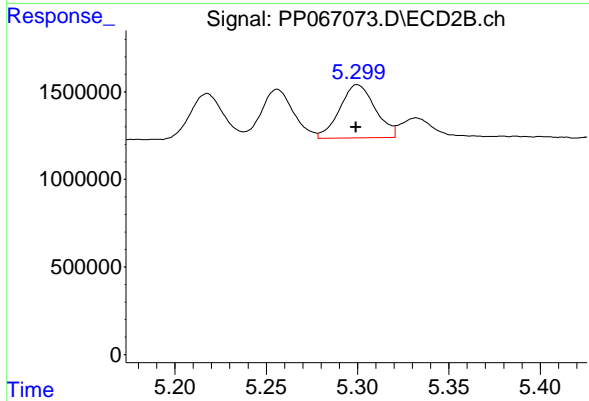
#18 AR-1242-3

R.T.: 5.218 min  
 Delta R.T.: 0.001 min  
 Response: 3413583  
 Conc: 246.42 ng/ml



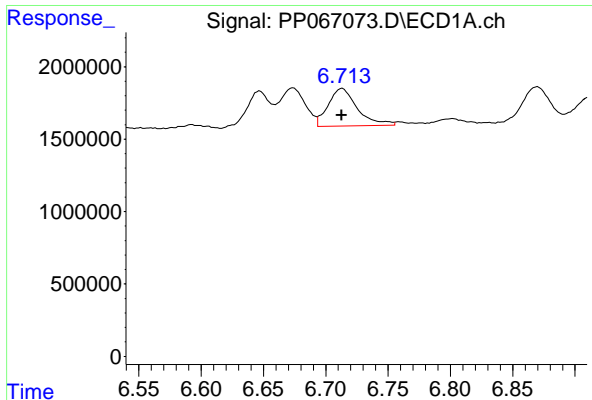
#19 AR-1242-4

R.T.: 5.976 min  
 Delta R.T.: 0.000 min  
 Response: 3593572  
 Conc: 281.52 ng/ml



#19 AR-1242-4

R.T.: 5.300 min  
 Delta R.T.: 0.000 min  
 Response: 4128709  
 Conc: 255.70 ng/ml



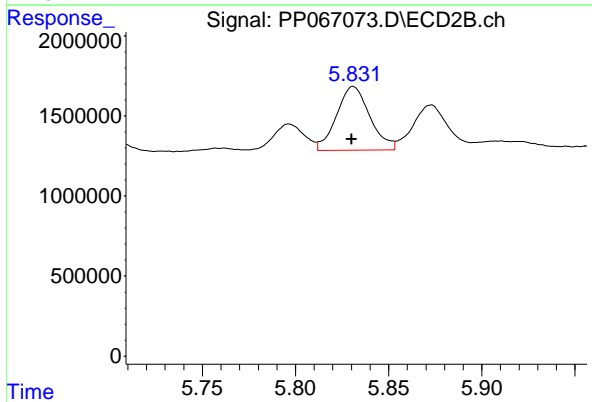
#20 AR-1242-5

R.T.: 6.713 min  
 Delta R.T.: 0.000 min  
 Response: 4235540  
 Conc: 263.17 ng/ml

Instrument : ECD\_P  
 Client Sample Id : AR1242ICC250

**Manual Integrations  
 APPROVED**

Reviewed By :Yogesh Patel 09/05/2024  
 Supervised By :Ankita Jodhani 09/05/2024



#20 AR-1242-5

R.T.: 5.831 min  
 Delta R.T.: 0.000 min  
 Response: 4954229  
 Conc: 271.62 ng/ml