

Data Path : Z:\pestpcbsrv\HPCHEM1\ECD\_P\Data\PP090325\  
 Data File : PP074803.D  
 Signal(s) : Signal #1: ECD1A.ch Signal #2: ECD2B.ch  
 Acq On : 03 Sep 2025 09:13  
 Operator : YP\AJ  
 Sample : Q2999-04 10X  
 Misc :  
 ALS Vial : 25 Sample Multiplier: 1

**Instrument :**  
 ECD\_P  
**ClientSampleId :**  
 H1H638W-1-2

**Manual Integrations**  
**APPROVED**

Reviewed By :Yogesh Patel 09/03/2025  
 Supervised By :mohammad ahmed 09/05/2025

Integration File signal 1: autoint1.e  
 Integration File signal 2: autoint2.e  
 Quant Time: Sep 03 12:37:22 2025  
 Quant Method : Z:\pestpcbsrv\HPCHEM1\ECD\_P\methods\PP081925.M  
 Quant Title : GC EXTRACTABLES  
 QLast Update : Wed Aug 20 06:20:44 2025  
 Response via : Initial Calibration  
 Integrator: ChemStation

Volume Inj. : 2 µl  
 Signal #1 Phase : ZB-MR1 Signal #2 Phase: ZB-MR2  
 Signal #1 Info : 30Mx0.32mmx 0.50µ Signal #2 Info : 30M x 0.32mm x 0.25µm

Compound	RT#1	RT#2	Resp#1	Resp#2	ng/ml	ng/ml
-----						
System Monitoring Compounds						
1) SA Tetrachlo...	4.657	3.796	2496680	6282590	2.040	1.299m#
2) SA Decachlor...	10.435	8.811	1963221	10616705	1.988	1.416 #

Target Compounds

-----  
 (f)=RT Delta > 1/2 Window (#)=Amounts differ by > 25% (m)=manual int.

Data Path : Z:\pestpcbsrv\HPCHEM1\ECD\_P\Data\PP090325\  
 Data File : PP074803.D  
 Signal(s) : Signal #1: ECD1A.ch Signal #2: ECD2B.ch  
 Acq On : 03 Sep 2025 09:13  
 Operator : YP\AJ  
 Sample : Q2999-04 10X  
 Misc :  
 ALS Vial : 25 Sample Multiplier: 1

**Instrument :**

ECD\_P

**ClientSampleId :**

HIH638W-1-2

**Manual Integrations**

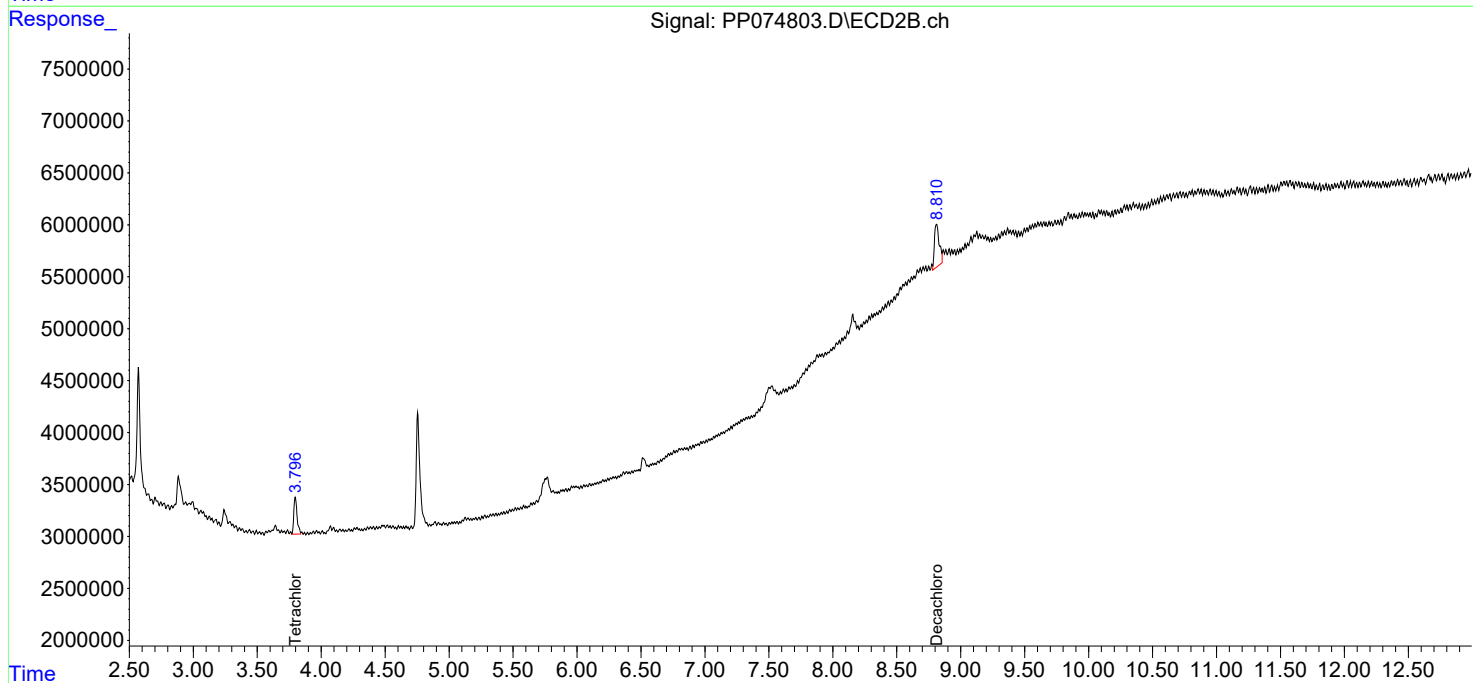
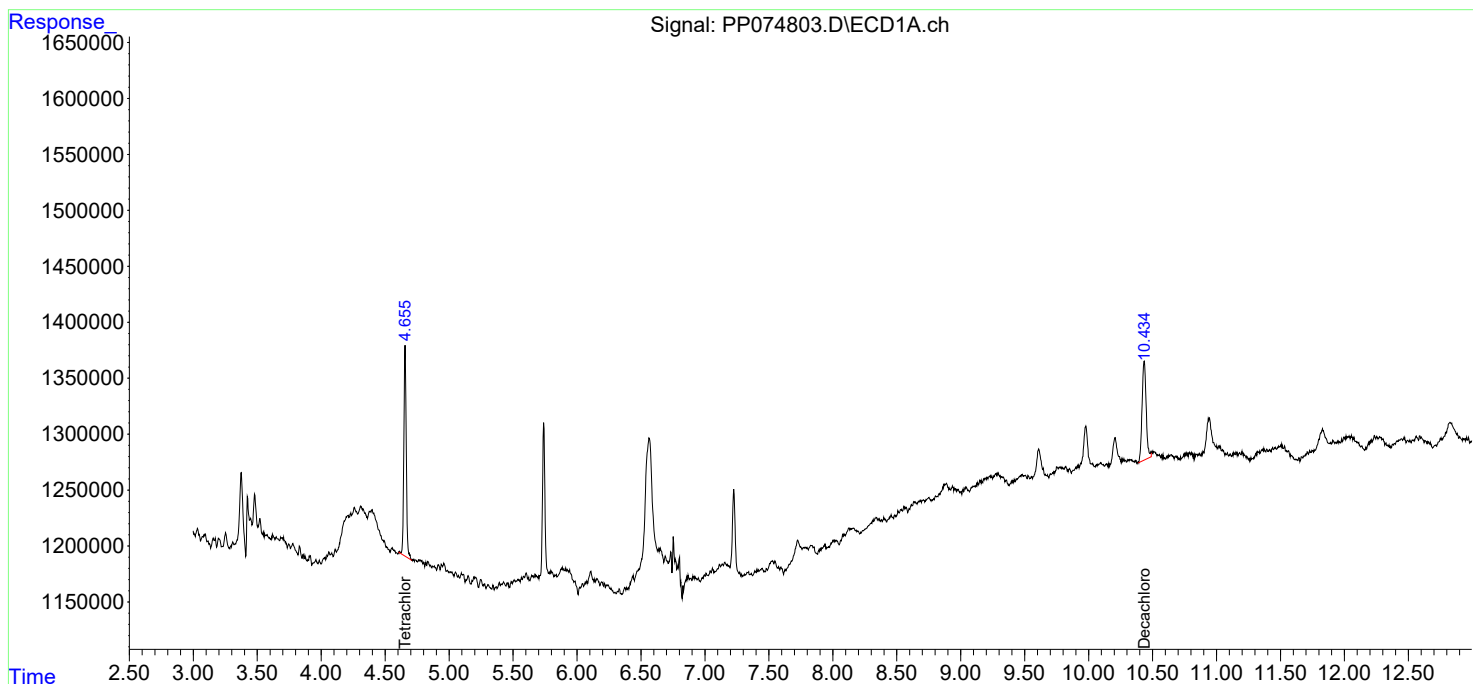
**APPROVED**

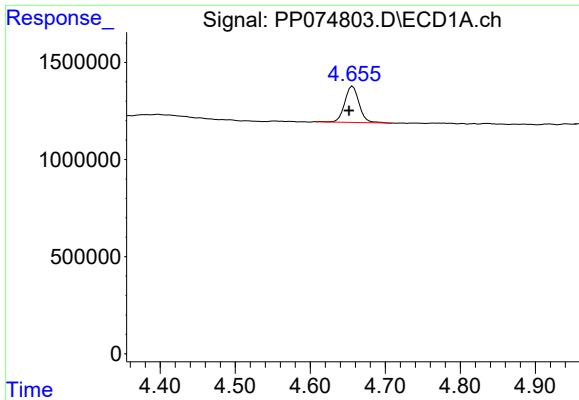
Reviewed By :Yogesh Patel 09/03/2025

Supervised By :mohammad ahmed 09/05/2025

Integration File signal 1: autoint1.e  
 Integration File signal 2: autoint2.e  
 Quant Time: Sep 03 12:37:22 2025  
 Quant Method : Z:\pestpcbsrv\HPCHEM1\ECD\_P\methods\PP081925.M  
 Quant Title : GC EXTRACTABLES  
 QLast Update : Wed Aug 20 06:20:44 2025  
 Response via : Initial Calibration  
 Integrator: ChemStation

Volume Inj. : 2 µl  
 Signal #1 Phase : ZB-MR1 Signal #2 Phase: ZB-MR2  
 Signal #1 Info : 30Mx0.32mmx 0.50µ Signal #2 Info : 30M x 0.32mm x 0.25µm



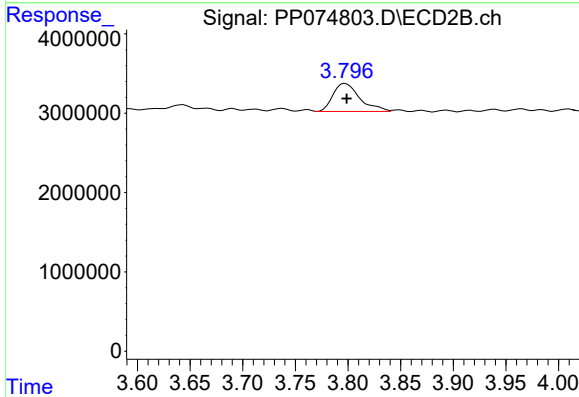


#1 Tetrachloro-m-xylene  
 R.T.: 4.657 min  
 Delta R.T.: 0.005 min  
 Response: 2496680  
 Conc: 2.04 ng/ml

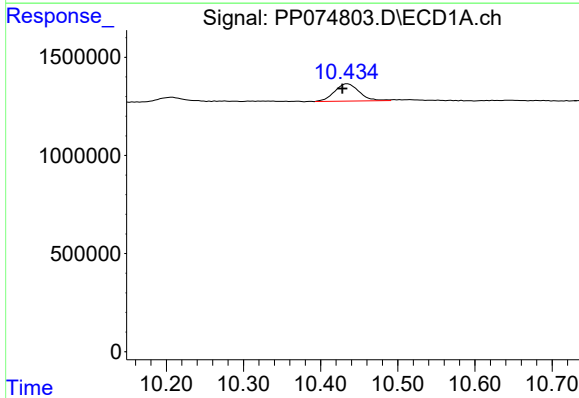
Instrument :  
 ECD\_P  
 ClientSampleId :  
 HIH638W-1-2

Manual Integrations  
 APPROVED

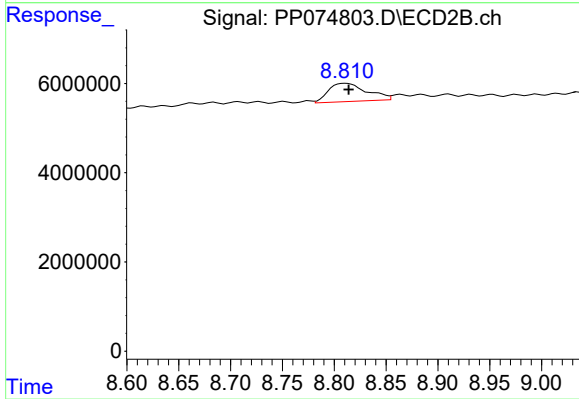
Reviewed By :Yogesh Patel 09/03/2025  
 Supervised By :mohammad ahmed 09/05/2025



#1 Tetrachloro-m-xylene  
 R.T.: 3.796 min  
 Delta R.T.: -0.003 min  
 Response: 6282590  
 Conc: 1.30 ng/ml m



#2 Decachlorobiphenyl  
 R.T.: 10.435 min  
 Delta R.T.: 0.007 min  
 Response: 1963221  
 Conc: 1.99 ng/ml



#2 Decachlorobiphenyl  
 R.T.: 8.811 min  
 Delta R.T.: -0.002 min  
 Response: 10616705  
 Conc: 1.42 ng/ml