

Data Path : Z:\pestpcbsrv\HPCHEM1\ECD\_P\Data\PP090325\  
 Data File : PP074805.D  
 Signal(s) : Signal #1: ECD1A.ch Signal #2: ECD2B.ch  
 Acq On : 03 Sep 2025 12:18  
 Operator : YP\AJ  
 Sample : AR1242CCC500  
 Misc :  
 ALS Vial : 4 Sample Multiplier: 1

**Instrument :**  
 ECD\_P  
**ClientSampleId :**  
 AR1242CCC500

**Manual Integrations**  
**APPROVED**

Reviewed By :Yogesh Patel 09/03/2025  
 Supervised By :mohammad ahmed 09/05/2025

Integration File signal 1: autoint1.e  
 Integration File signal 2: autoint2.e  
 Quant Time: Sep 03 14:04:20 2025  
 Quant Method : Z:\pestpcbsrv\HPCHEM1\ECD\_P\methods\PP081925.M  
 Quant Title : GC EXTRACTABLES  
 QLast Update : Wed Aug 20 06:20:44 2025  
 Response via : Initial Calibration  
 Integrator: ChemStation

Volume Inj. : 2 µl  
 Signal #1 Phase : ZB-MR1 Signal #2 Phase: ZB-MR2  
 Signal #1 Info : 30Mx0.32mmx 0.50µ Signal #2 Info : 30M x 0.32mm x 0.25µm

Compound	RT#1	RT#2	Resp#1	Resp#2	ng/ml	ng/ml
-----						
System Monitoring Compounds						
1) SA Tetrachlo...	4.668	3.800	61048326	259.4E6	49.889	53.642
2) SA Decachlor...	10.460	8.819	42802825	261.2E6	43.344	34.828
Target Compounds						
16) L4 AR-1242-1	5.822	4.900	18261854	214.3E6	477.120	508.196
17) L4 AR-1242-2	5.842	4.958	24854997	102.2E6	440.052m	510.428
18) L4 AR-1242-3	5.906	5.077	17319398	59265942	426.556	500.988
19) L4 AR-1242-4	6.003	5.161	14341362	75850852	451.812	443.159m
20) L4 AR-1242-5	6.733	5.682	15007807	98090522	416.068	529.749 #
-----						

(f)=RT Delta > 1/2 Window (#)=Amounts differ by > 25% (m)=manual int.

Data Path : Z:\pestpcbsrv\HPCHEM1\ECD\_P\Data\PP074805\  
 Data File : PP074805.D  
 Signal(s) : Signal #1: ECD1A.ch Signal #2: ECD2B.ch  
 Acq On : 03 Sep 2025 12:18  
 Operator : YP\AJ  
 Sample : AR1242CCC500  
 Misc :  
 ALS Vial : 4 Sample Multiplier: 1

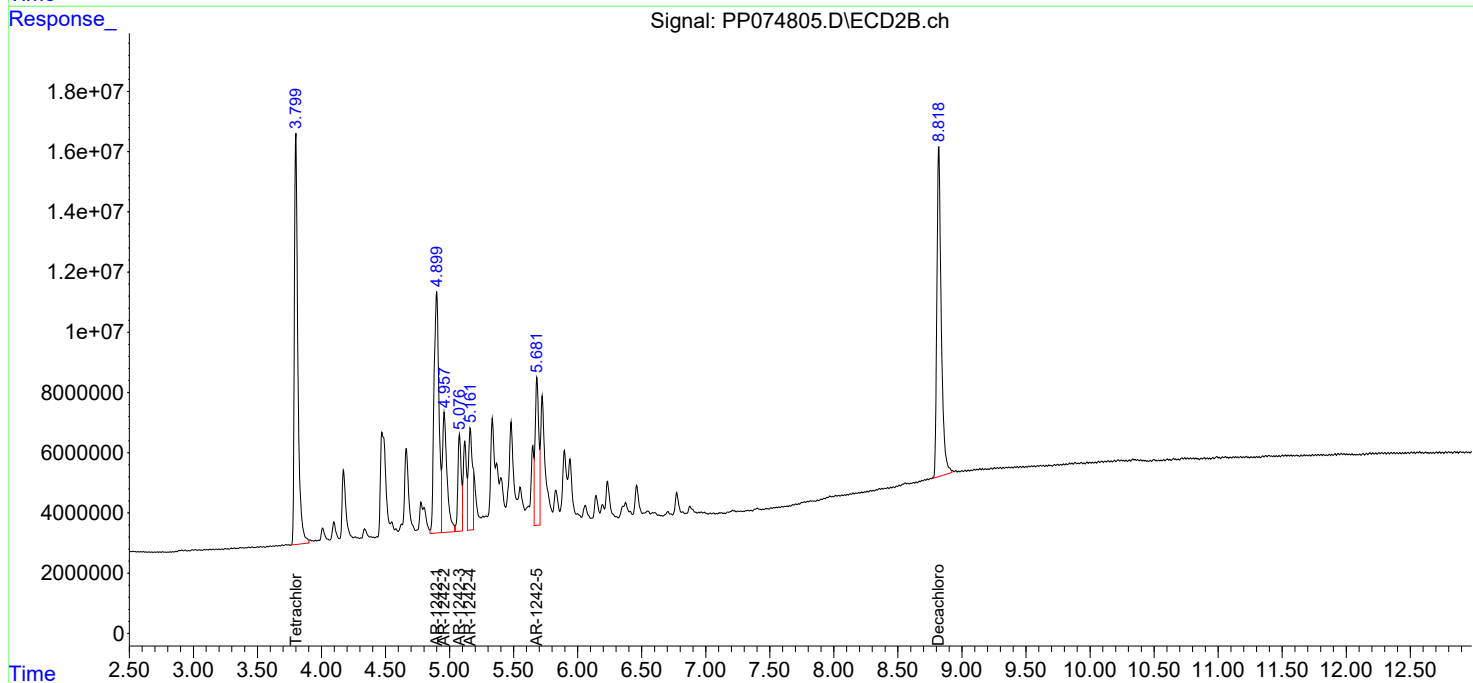
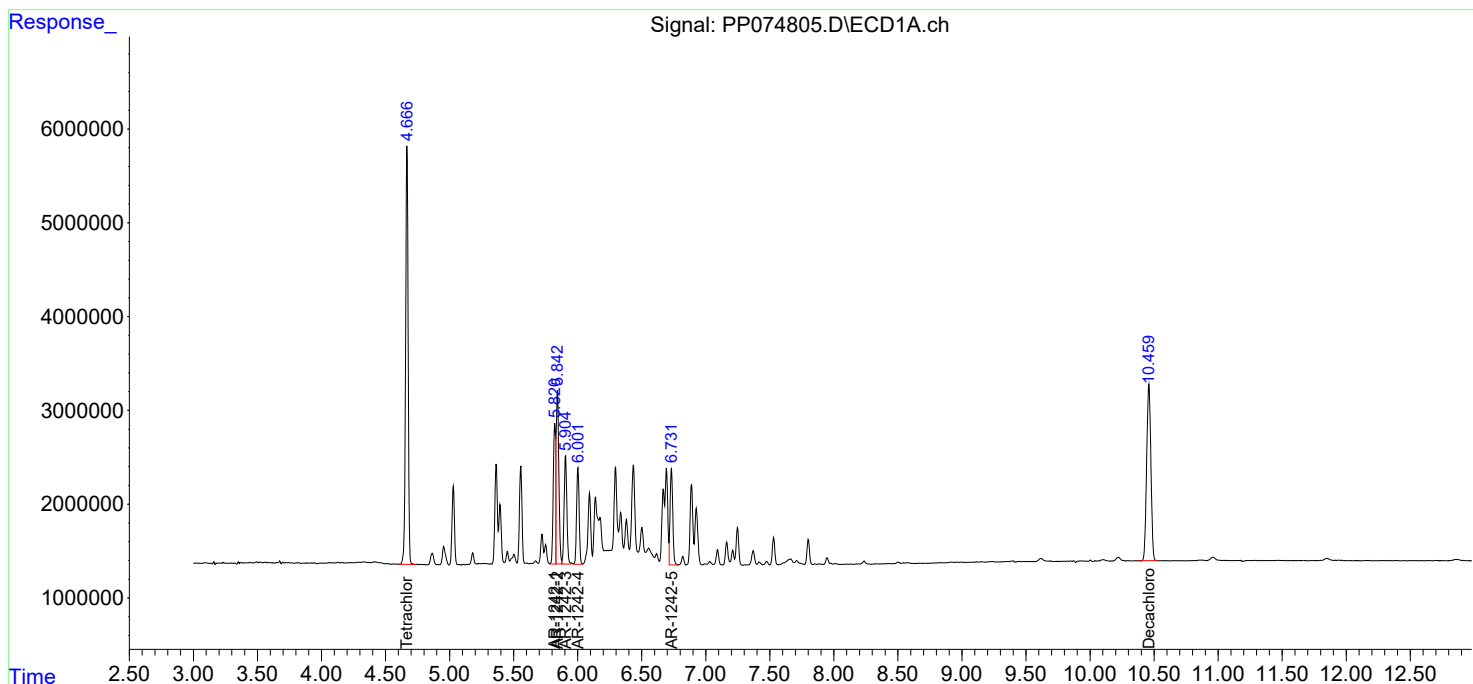
**Instrument :**  
 ECD\_P  
**ClientSampleId :**  
 AR1242CCC500

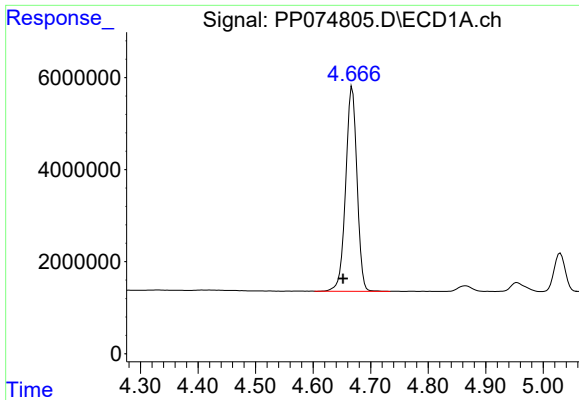
**Manual Integrations**  
**APPROVED**

Reviewed By :Yogesh Patel 09/03/2025  
 Supervised By :mohammad ahmed 09/05/2025

Integration File signal 1: autoint1.e  
 Integration File signal 2: autoint2.e  
 Quant Time: Sep 03 14:04:20 2025  
 Quant Method : Z:\pestpcbsrv\HPCHEM1\ECD\_P\methods\PP081925.M  
 Quant Title : GC EXTRACTABLES  
 QLast Update : Wed Aug 20 06:20:44 2025  
 Response via : Initial Calibration  
 Integrator: ChemStation

Volume Inj. : 2 µl  
 Signal #1 Phase : ZB-MR1 Signal #2 Phase: ZB-MR2  
 Signal #1 Info : 30Mx0.32mmx 0.50µ Signal #2 Info : 30M x 0.32mm x 0.25µm





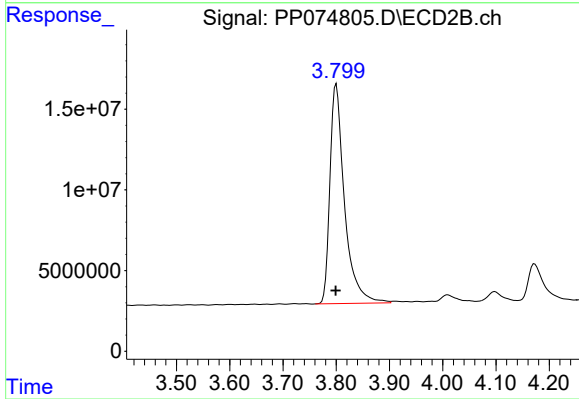
#1 Tetrachloro-m-xylene

R.T.: 4.668 min  
 Delta R.T.: 0.016 min  
 Response: 61048326  
 Conc: 49.89 ng/ml

Instrument :  
 ECD\_P  
 ClientSampleId :  
 AR1242CCC500

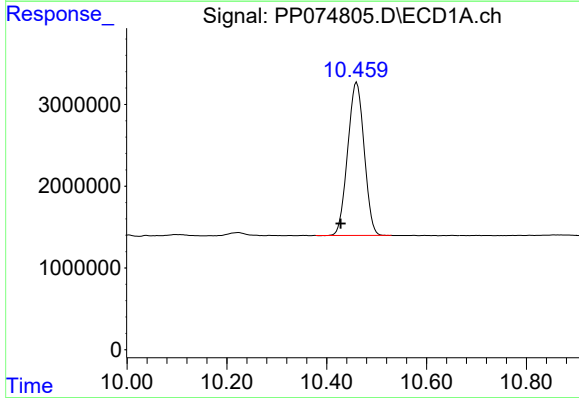
Manual Integrations  
 APPROVED

Reviewed By :Yogesh Patel 09/03/2025  
 Supervised By :mohammad ahmed 09/05/2025



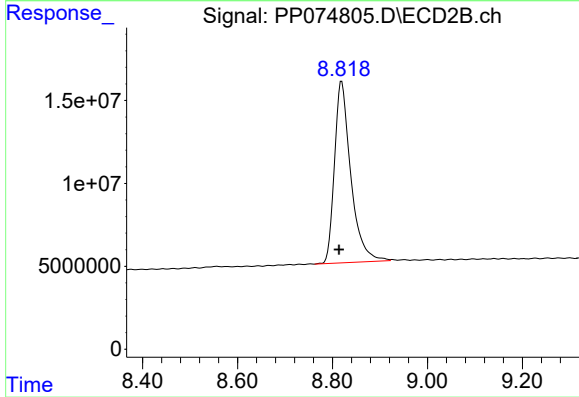
#1 Tetrachloro-m-xylene

R.T.: 3.800 min  
 Delta R.T.: 0.001 min  
 Response: 259383318  
 Conc: 53.64 ng/ml



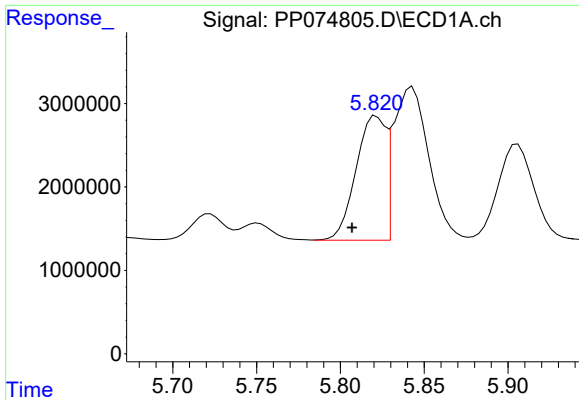
#2 Decachlorobiphenyl

R.T.: 10.460 min  
 Delta R.T.: 0.032 min  
 Response: 42802825  
 Conc: 43.34 ng/ml



#2 Decachlorobiphenyl

R.T.: 8.819 min  
 Delta R.T.: 0.005 min  
 Response: 261181672  
 Conc: 34.83 ng/ml



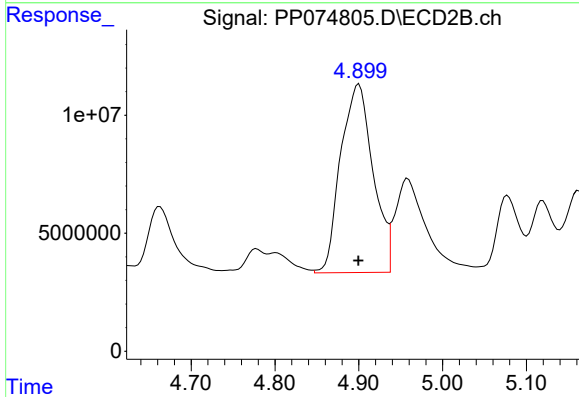
#16 AR-1242-1

R.T.: 5.822 min  
 Delta R.T.: 0.015 min  
 Response: 18261854  
 Conc: 477.12 ng/ml

Instrument :  
 ECD\_P  
 ClientSampleId :  
 AR1242CCC500

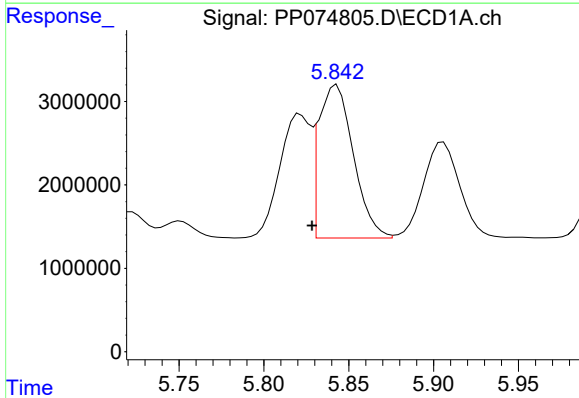
Manual Integrations  
 APPROVED

Reviewed By :Yogesh Patel 09/03/2025  
 Supervised By :mohammad ahmed 09/05/2025



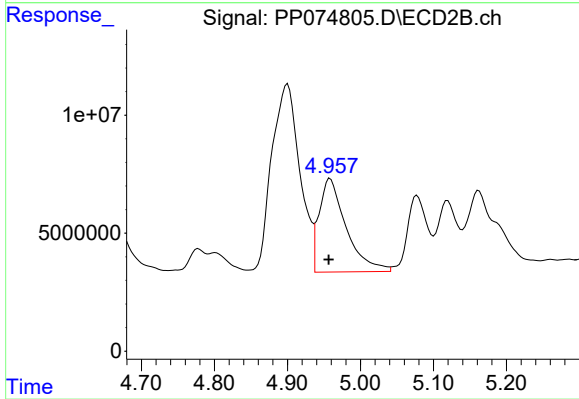
#16 AR-1242-1

R.T.: 4.900 min  
 Delta R.T.: 0.000 min  
 Response: 214332977  
 Conc: 508.20 ng/ml



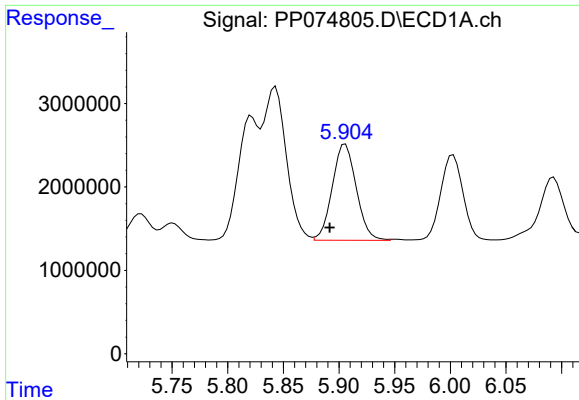
#17 AR-1242-2

R.T.: 5.842 min  
 Delta R.T.: 0.013 min  
 Response: 24854997  
 Conc: 440.05 ng/ml m



#17 AR-1242-2

R.T.: 4.958 min  
 Delta R.T.: 0.002 min  
 Response: 102229837  
 Conc: 510.43 ng/ml



#18 AR-1242-3

R.T.: 5.906 min  
 Delta R.T.: 0.014 min  
 Response: 17319398  
 Conc: 426.56 ng/ml

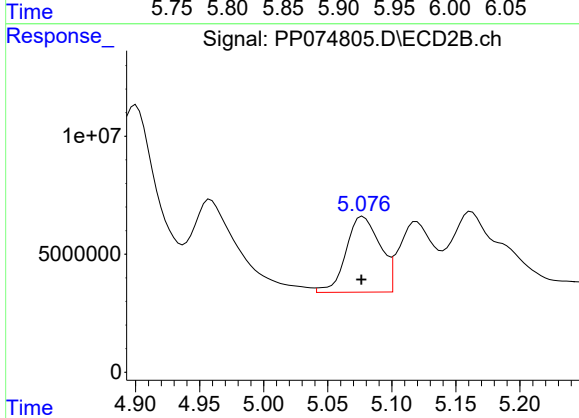
Instrument :

ECD\_P

ClientSampleId :  
 AR1242CCC500

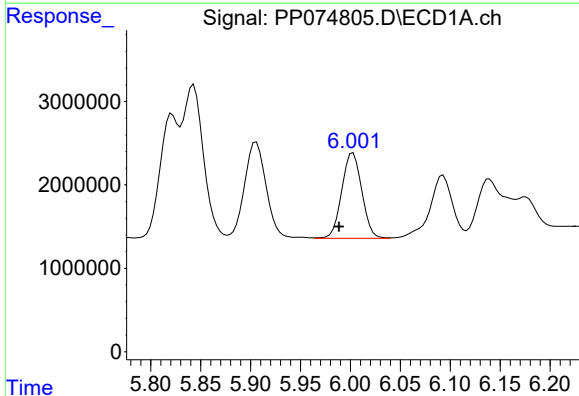
Manual Integrations  
 APPROVED

Reviewed By :Yogesh Patel 09/03/2025  
 Supervised By :mohammad ahmed 09/05/2025



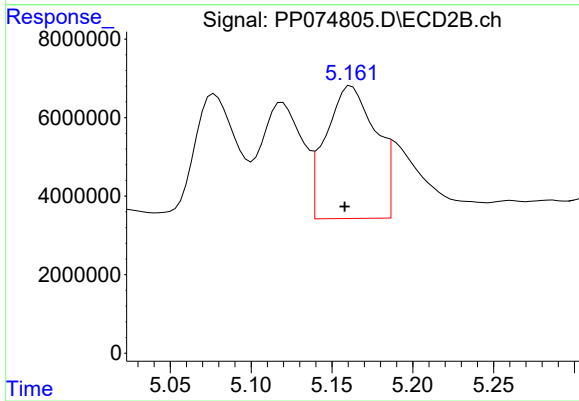
#18 AR-1242-3

R.T.: 5.077 min  
 Delta R.T.: 0.001 min  
 Response: 59265942  
 Conc: 500.99 ng/ml



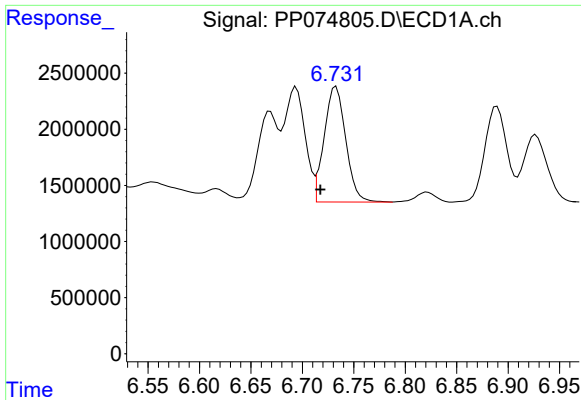
#19 AR-1242-4

R.T.: 6.003 min  
 Delta R.T.: 0.014 min  
 Response: 14341362  
 Conc: 451.81 ng/ml



#19 AR-1242-4

R.T.: 5.161 min  
 Delta R.T.: 0.003 min  
 Response: 75850852  
 Conc: 443.16 ng/ml m



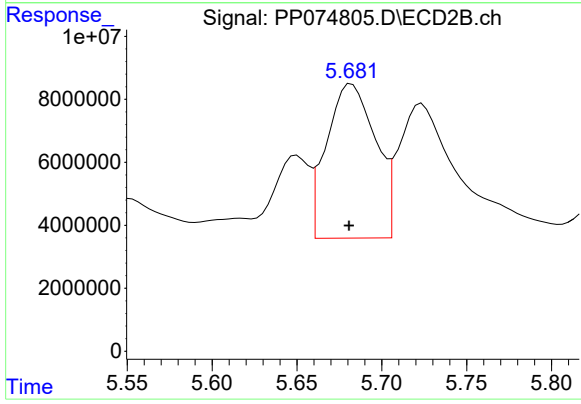
#20 AR-1242-5

R.T.: 6.733 min  
 Delta R.T.: 0.015 min  
 Response: 15007807  
 Conc: 416.07 ng/ml

Instrument :  
 ECD\_P  
 ClientSampleId :  
 AR1242CCC500

Manual Integrations  
 APPROVED

Reviewed By :Yogesh Patel 09/03/2025  
 Supervised By :mohammad ahmed 09/05/2025



#20 AR-1242-5

R.T.: 5.682 min  
 Delta R.T.: 0.001 min  
 Response: 98090522  
 Conc: 529.75 ng/ml