

Data Path : Z:\pestpcbsrv\HPCHEM1\ECD_P\Data\PP090325\
 Data File : PP074818.D
 Signal(s) : Signal #1: ECD1A.ch Signal #2: ECD2B.ch
 Acq On : 03 Sep 2025 15:49
 Operator : YP\AJ
 Sample : Q2923-04
 Misc :
 ALS Vial : 16 Sample Multiplier: 1

Instrument :
 ECD_P
 ClientSampleId :
 K262-23B

Integration File signal 1: autoint1.e
 Integration File signal 2: autoint2.e
 Quant Time: Sep 04 02:19:39 2025
 Quant Method : Z:\pestpcbsrv\HPCHEM1\ECD_P\methods\PP081925.M
 Quant Title : GC EXTRACTABLES
 QLast Update : Wed Aug 20 06:20:44 2025
 Response via : Initial Calibration
 Integrator: ChemStation

Volume Inj. : 2 µl
 Signal #1 Phase : ZB-MR1 Signal #2 Phase: ZB-MR2
 Signal #1 Info : 30Mx0.32mmx 0.50µ Signal #2 Info : 30M x 0.32mm x 0.25µm

Compound	RT#1	RT#2	Resp#1	Resp#2	ng/ml	ng/ml

System Monitoring Compounds						
1) SA Tetrachlo...	4.658	3.802	24195217	82613664	19.772	17.085
2) SA Decachlor...	10.438	8.811	13052383	92804322	13.217	12.375

Target Compounds

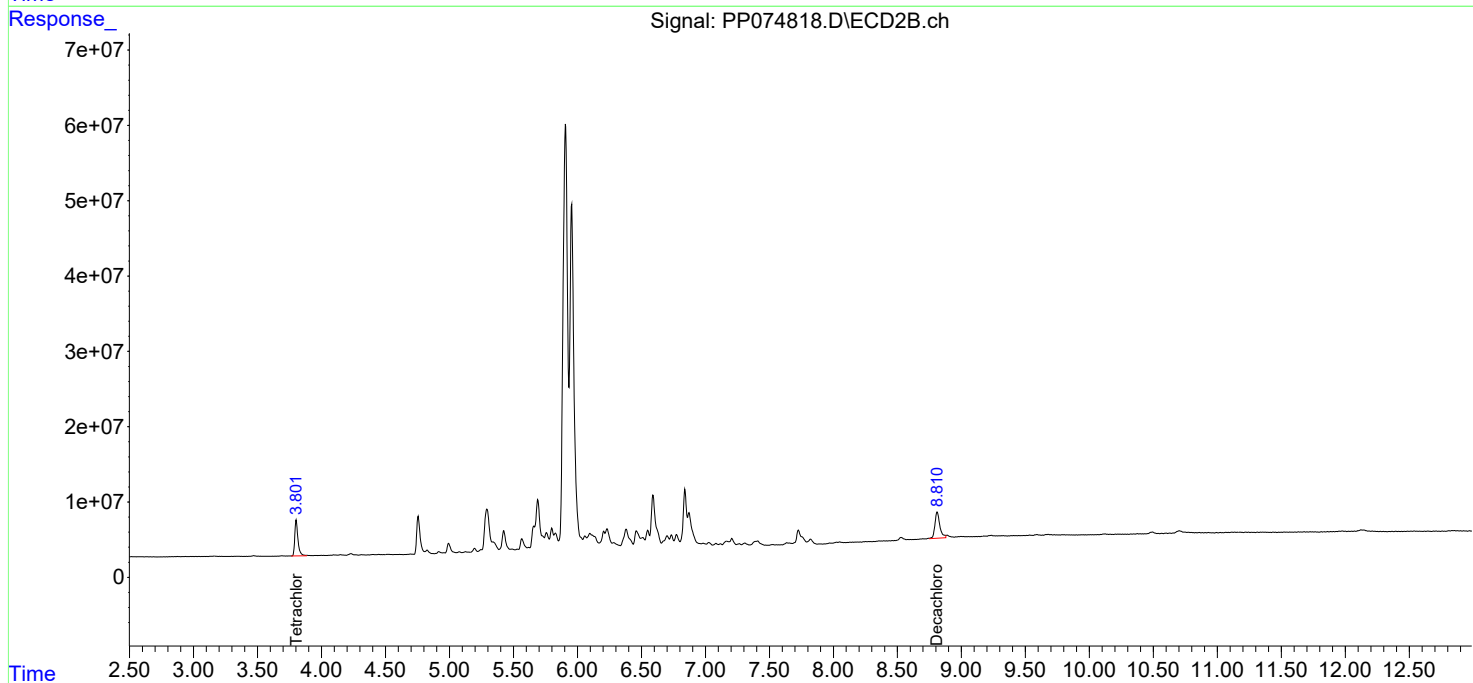
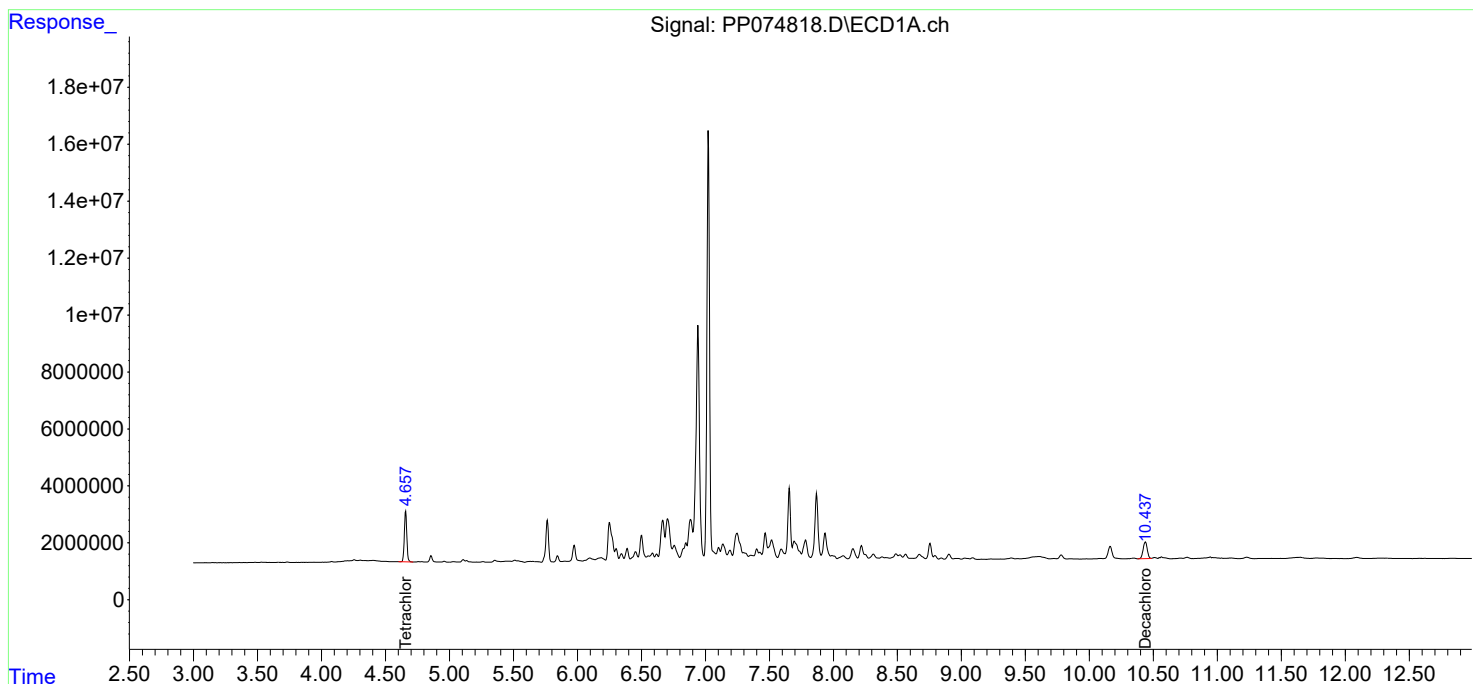
(f)=RT Delta > 1/2 Window (#)=Amounts differ by > 25% (m)=manual int.

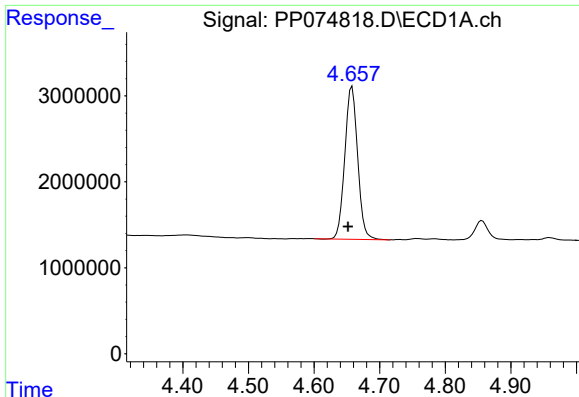
Data Path : Z:\pestpcbsrv\HPCHEM1\ECD_P\Data\PP090325\
 Data File : PP074818.D
 Signal(s) : Signal #1: ECD1A.ch Signal #2: ECD2B.ch
 Acq On : 03 Sep 2025 15:49
 Operator : YP\AJ
 Sample : Q2923-04
 Misc :
 ALS Vial : 16 Sample Multiplier: 1

Instrument :
 ECD_P
 ClientSampleId :
 K262-23B

Integration File signal 1: autoint1.e
 Integration File signal 2: autoint2.e
 Quant Time: Sep 04 02:19:39 2025
 Quant Method : Z:\pestpcbsrv\HPCHEM1\ECD_P\methods\PP081925.M
 Quant Title : GC EXTRACTABLES
 QLast Update : Wed Aug 20 06:20:44 2025
 Response via : Initial Calibration
 Integrator: ChemStation

Volume Inj. : 2 µl
 Signal #1 Phase : ZB-MR1 Signal #2 Phase: ZB-MR2
 Signal #1 Info : 30Mx0.32mmx 0.50µm Signal #2 Info : 30M x 0.32mm x 0.25µm

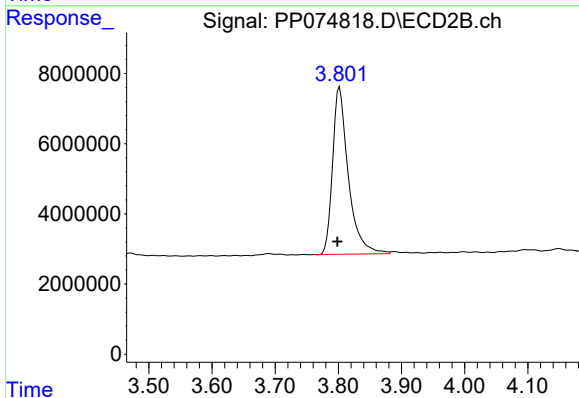




#1 Tetrachloro-m-xylene

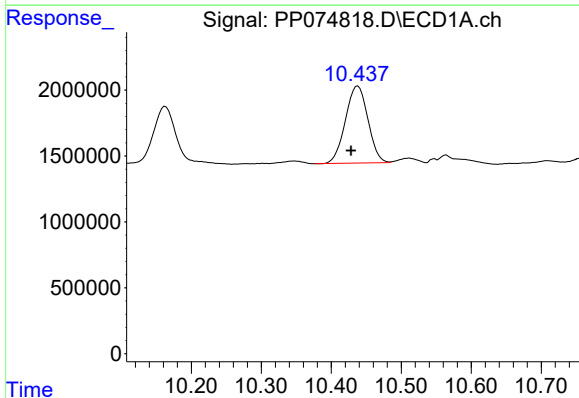
R.T.: 4.658 min
 Delta R.T.: 0.006 min
 Response: 24195217
 Conc: 19.77 ng/ml

Instrument :
 ECD_P
 ClientSampleId :
 K262-23B



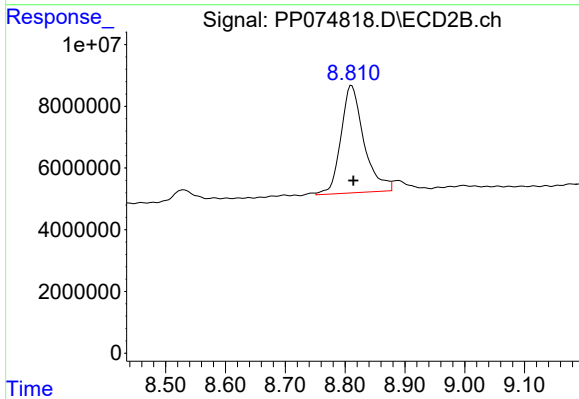
#1 Tetrachloro-m-xylene

R.T.: 3.802 min
 Delta R.T.: 0.003 min
 Response: 82613664
 Conc: 17.09 ng/ml



#2 Decachlorobiphenyl

R.T.: 10.438 min
 Delta R.T.: 0.010 min
 Response: 13052383
 Conc: 13.22 ng/ml



#2 Decachlorobiphenyl

R.T.: 8.811 min
 Delta R.T.: -0.003 min
 Response: 92804322
 Conc: 12.38 ng/ml