

Data Path : Z:\pestpcbsrv\HPCHEM1\ECD\_P\Data\PP090623\  
 Data File : PP059791.D  
 Signal(s) : Signal #1: ECD1A.ch Signal #2: ECD2B.ch  
 Acq On : 06 Sep 2023 21:19  
 Operator : YP\AJ  
 Sample : PB155318BS  
 Misc :  
 ALS Vial : 19 Sample Multiplier: 1

Instrument :  
 ECD\_P  
 ClientSampleId :

Integration File signal 1: autoint1.e  
 Integration File signal 2: autoint2.e  
 Quant Time: Sep 07 00:28:09 2023  
 Quant Method : Z:\pestpcbsrv\HPCHEM1\ECD\_P\methods\PP090623.M  
 Quant Title : GC EXTRACTABLES  
 QLast Update : Wed Sep 06 14:24:13 2023  
 Response via : Initial Calibration  
 Integrator: ChemStation

Volume Inj. : 2 µl  
 Signal #1 Phase : ZB-MR2 Signal #2 Phase: ZB-MR2  
 Signal #1 Info : 30Mx0.32mmx 0.50µ Signal #2 Info : 30M x 0.32mm x 0.25µm

Compound	RT#1	RT#2	Resp#1	Resp#2	ng/ml	ng/ml
-----						
System Monitoring Compounds						
1) SA Tetrachlo...	4.383	3.609	25894813	32896829	17.566	16.655
2) SA Decachlor...	10.155	8.627	20624954	26301055	20.090	19.267
Target Compounds						
3) L1 AR-1016-1	5.559	4.695	420288	469699	8.852	7.918
4) L1 AR-1016-2	5.583	4.715	557680	633033	8.096	7.167
5) L1 AR-1016-3	5.643	4.889	421147	148504	9.689	3.230 #
6) L1 AR-1016-4	5.744	4.934	333988	310797	9.435	8.054
7) L1 AR-1016-5	6.039	5.145	240900	202451	7.117	4.028 #
8) L2 AR-1221-1	4.588	3.820	122230	20673	6.548	0.806 #
9) L2 AR-1221-2	4.663f	3.909	13894	453439	1.002	24.866 #
10) L2 AR-1221-3	4.755	3.984	219294	257931	5.446	4.596
11) L3 AR-1232-1	4.755	3.984	219294	257931	6.682	5.850
12) L3 AR-1232-2	5.291	4.715	352307	633033	19.132	15.950
13) L3 AR-1232-3	5.583	4.889	557680	148504	17.642	7.251 #
14) L3 AR-1232-4	5.744	4.976	333988	316391	20.652	15.816
15) L3 AR-1232-5	5.882	5.145	181074	202451	13.456	9.370 #
16) L4 AR-1242-1	5.559	4.695	420288	469699	10.246	9.268
17) L4 AR-1242-2	5.583	4.715	557680	633033	9.388	8.522
18) L4 AR-1242-3	5.643	4.889	421147	148504	11.249	3.787 #
19) L4 AR-1242-4	5.744	4.976	333988	316391	10.904	7.691 #
20) L4 AR-1242-5	6.473	5.499	19923	352519	0.707	7.503 #
21) L5 AR-1248-1	5.559	4.695	420288	469699	14.322	12.929
22) L5 AR-1248-2	5.835	4.934	238909	310797	5.509	5.676
23) L5 AR-1248-3	6.039	4.976	240900	316391	5.205	5.521
24) L5 AR-1248-4	6.447	5.145	38516	202451	0.852	3.052 #
25) L5 AR-1248-5	6.492	5.543	72421	43276	1.631	0.721 #
26) L6 AR-1254-1	6.419	5.499	364638	352519	7.146	3.656 #
27) L6 AR-1254-2	6.640	5.649	339686	291051	4.716	3.472 #
28) L6 AR-1254-3	7.007	6.056	281277	136035	4.010	1.070 #
29) L6 AR-1254-4	7.296	6.287	79819	15175	1.672	0.207 #
30) L6 AR-1254-5	7.712	6.701	714329	948768	13.695	8.537 #
31) L7 AR-1260-1	7.172	6.184	518345	761695	8.842	7.922
32) L7 AR-1260-2	7.431	6.375	670058	796984	10.702	7.336 #
33) L7 AR-1260-3	7.792	6.528	299138	1126592	5.943	10.889 #
34) L7 AR-1260-4	8.017	6.998	903269	585562	15.935	7.061 #
35) L7 AR-1260-5	8.337	7.245	748045	1137930	7.735	6.554
36) L8 AR-1262-1	7.792	6.793	299138	192215	4.465	3.873
37) L8 AR-1262-2	8.337	6.998	748045	585562	7.355	5.855
38) L8 AR-1262-3	8.657	7.526	492530	302399	6.789	4.139 #
39) L8 AR-1262-4	8.745	7.592	87565	927774	2.303	7.208 #
40) L8 AR-1262-5	9.390	8.091	78108	328717	2.205	5.909 #
41) L9 AR-1268-1	8.657	7.526	492530	302399	3.725	1.431 #

Data Path : Z:\pestpcbsrv\HPCHEM1\ECD\_P\Data\PP090623\  
 Data File : PP059791.D  
 Signal(s) : Signal #1: ECD1A.ch Signal #2: ECD2B.ch  
 Acq On : 06 Sep 2023 21:19  
 Operator : YP\AJ  
 Sample : PB155318BS  
 Misc :  
 ALS Vial : 19 Sample Multiplier: 1

Instrument :  
 ECD\_P  
 ClientSampleId :

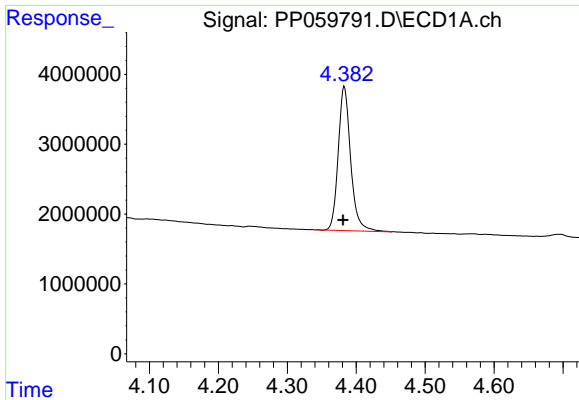
Integration File signal 1: autoint1.e  
 Integration File signal 2: autoint2.e  
 Quant Time: Sep 07 00:28:09 2023  
 Quant Method : Z:\pestpcbsrv\HPCHEM1\ECD\_P\methods\PP090623.M  
 Quant Title : GC EXTRACTABLES  
 QLast Update : Wed Sep 06 14:24:13 2023  
 Response via : Initial Calibration  
 Integrator: ChemStation

Volume Inj. : 2 µl  
 Signal #1 Phase : ZB-MR1 Signal #2 Phase: ZB-MR2  
 Signal #1 Info : 30Mx0.32mmx 0.50µ Signal #2 Info : 30M x 0.32mm x 0.25µm

	Compound	RT#1	RT#2	Resp#1	Resp#2	ng/ml	ng/ml
42)	L9 AR-1268-2	8.745	7.592	87565	927774	0.744	4.888 #
43)	L9 AR-1268-3	8.970	7.799	64449	36687	0.587	0.222 #
44)	L9 AR-1268-4	9.405	8.091	62905	328717	1.614	5.272 #
45)	L9 AR-1268-5	9.813	8.378	99506	69741	0.314	0.163 #

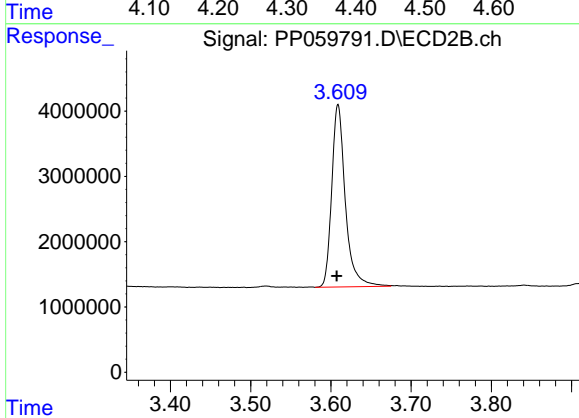
(f)=RT Delta > 1/2 Window (#)=Amounts differ by > 25% (m)=manual int.



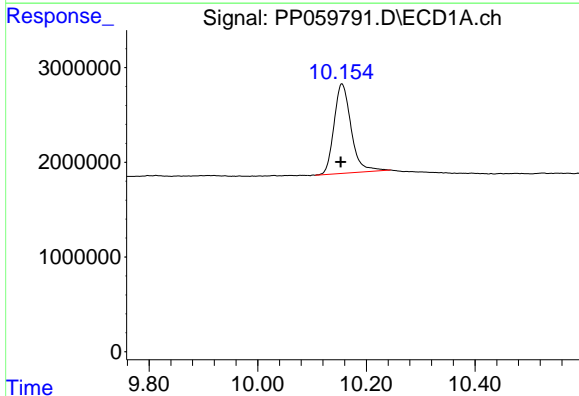


#1 Tetrachloro-m-xylene  
 R.T.: 4.383 min  
 Delta R.T.: 0.002 min  
 Response: 25894813  
 Conc: 17.57 ng/ml

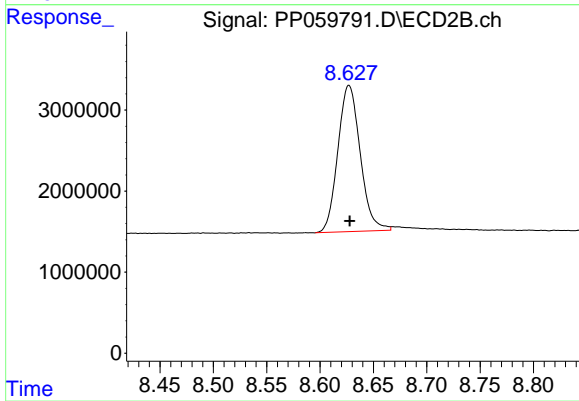
Instrument :  
 ECD\_P  
 ClientSampleId :



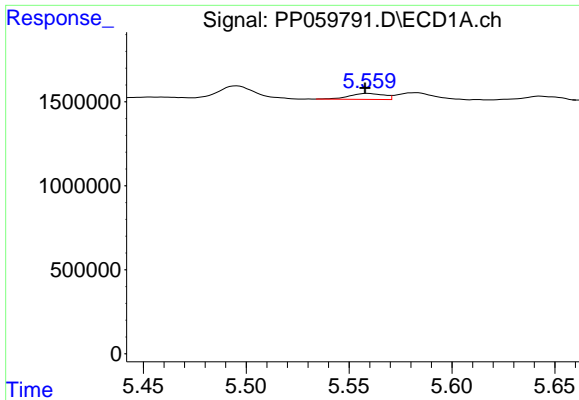
#1 Tetrachloro-m-xylene  
 R.T.: 3.609 min  
 Delta R.T.: 0.001 min  
 Response: 32896829  
 Conc: 16.65 ng/ml



#2 Decachlorobiphenyl  
 R.T.: 10.155 min  
 Delta R.T.: 0.002 min  
 Response: 20624954  
 Conc: 20.09 ng/ml



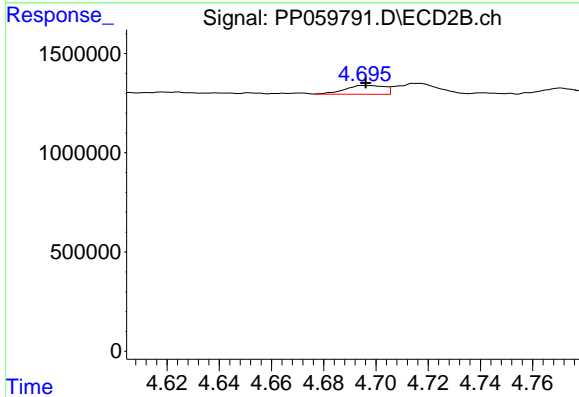
#2 Decachlorobiphenyl  
 R.T.: 8.627 min  
 Delta R.T.: 0.000 min  
 Response: 26301055  
 Conc: 19.27 ng/ml



#3 AR-1016-1

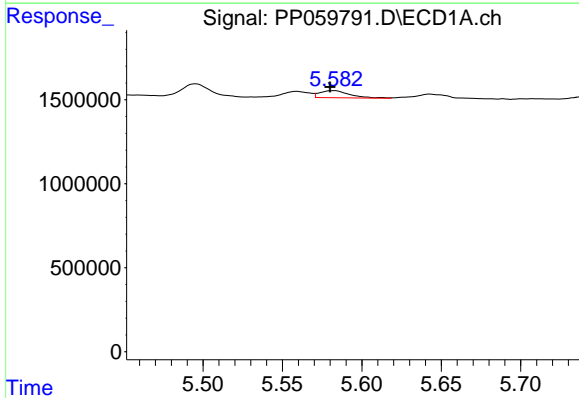
R.T.: 5.559 min  
 Delta R.T.: 0.001 min  
 Response: 420288  
 Conc: 8.85 ng/ml

Instrument :  
 ECD\_P  
 ClientSampleId :



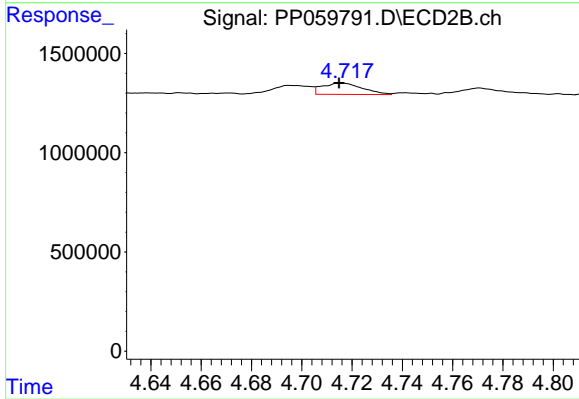
#3 AR-1016-1

R.T.: 4.695 min  
 Delta R.T.: 0.000 min  
 Response: 469699  
 Conc: 7.92 ng/ml



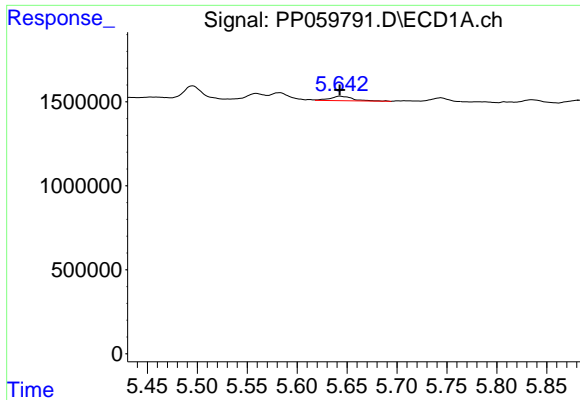
#4 AR-1016-2

R.T.: 5.583 min  
 Delta R.T.: 0.003 min  
 Response: 557680  
 Conc: 8.10 ng/ml



#4 AR-1016-2

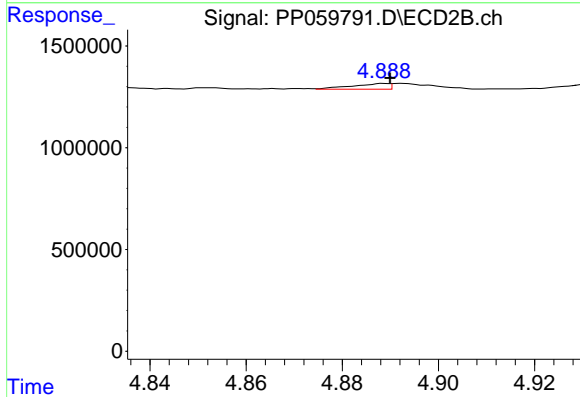
R.T.: 4.715 min  
 Delta R.T.: 0.000 min  
 Response: 633033  
 Conc: 7.17 ng/ml



#5 AR-1016-3

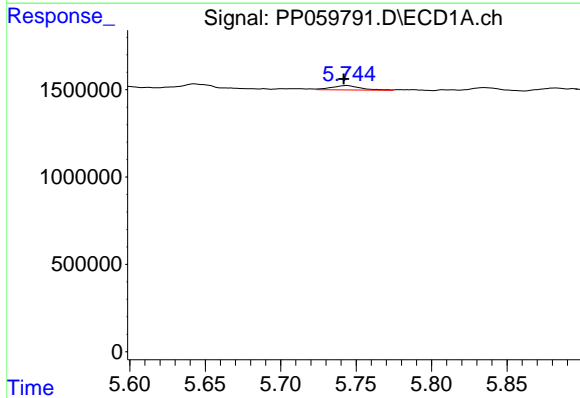
R.T.: 5.643 min  
 Delta R.T.: 0.000 min  
 Response: 421147  
 Conc: 9.69 ng/ml

Instrument :  
 ECD\_P  
 ClientSampleId :



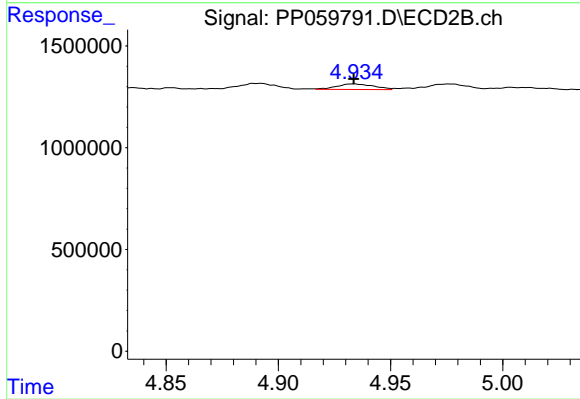
#5 AR-1016-3

R.T.: 4.889 min  
 Delta R.T.: -0.001 min  
 Response: 148504  
 Conc: 3.23 ng/ml



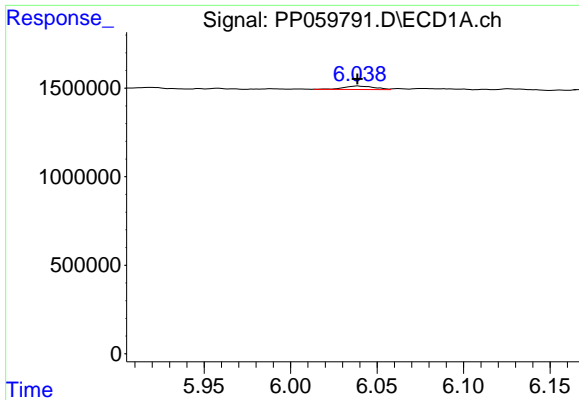
#6 AR-1016-4

R.T.: 5.744 min  
 Delta R.T.: 0.002 min  
 Response: 333988  
 Conc: 9.44 ng/ml



#6 AR-1016-4

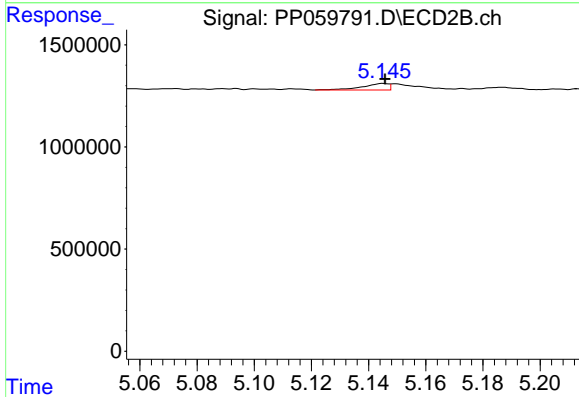
R.T.: 4.934 min  
 Delta R.T.: 0.000 min  
 Response: 310797  
 Conc: 8.05 ng/ml



#7 AR-1016-5

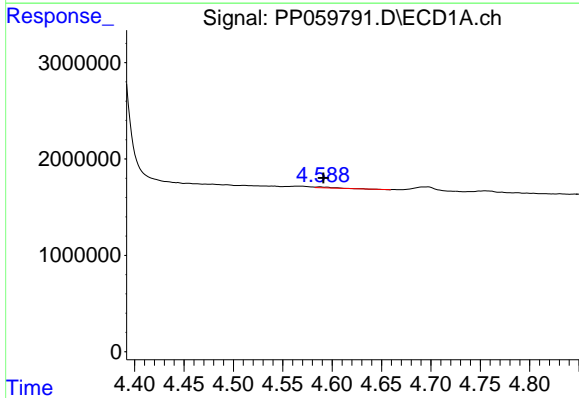
R.T.: 6.039 min  
 Delta R.T.: 0.000 min  
 Response: 240900  
 Conc: 7.12 ng/ml

Instrument :  
 ECD\_P  
 ClientSampleId :



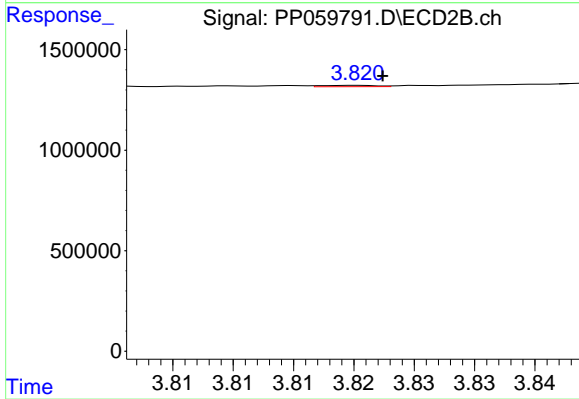
#7 AR-1016-5

R.T.: 5.145 min  
 Delta R.T.: 0.000 min  
 Response: 202451  
 Conc: 4.03 ng/ml



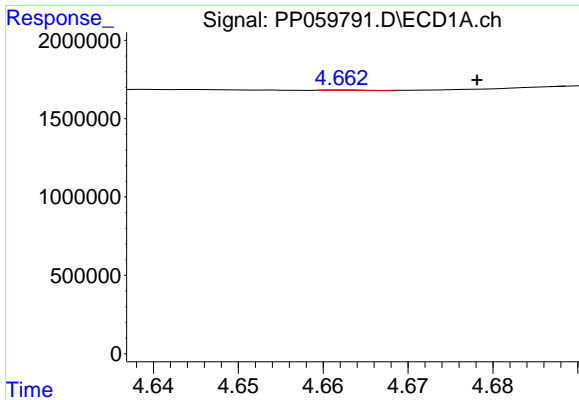
#8 AR-1221-1

R.T.: 4.588 min  
 Delta R.T.: -0.003 min  
 Response: 122230  
 Conc: 6.55 ng/ml



#8 AR-1221-1

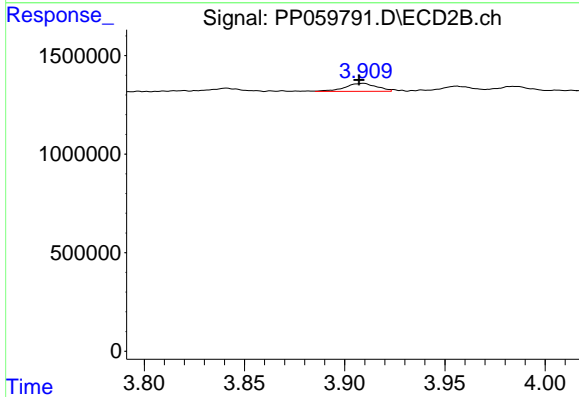
R.T.: 3.820 min  
 Delta R.T.: -0.002 min  
 Response: 20673  
 Conc: 0.81 ng/ml



#9 AR-1221-2

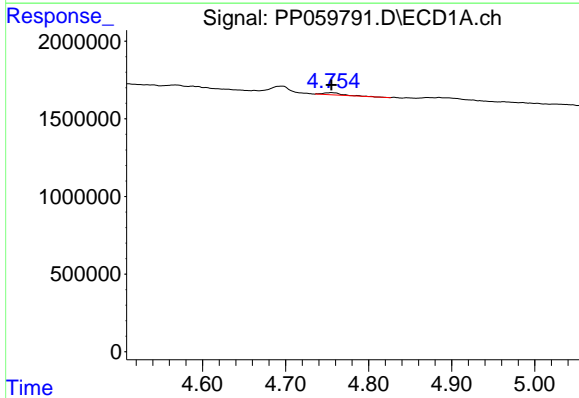
R.T.: 4.663 min  
 Delta R.T.: -0.016 min  
 Response: 13894  
 Conc: 1.00 ng/ml

Instrument :  
 ECD\_P  
 ClientSampleId :



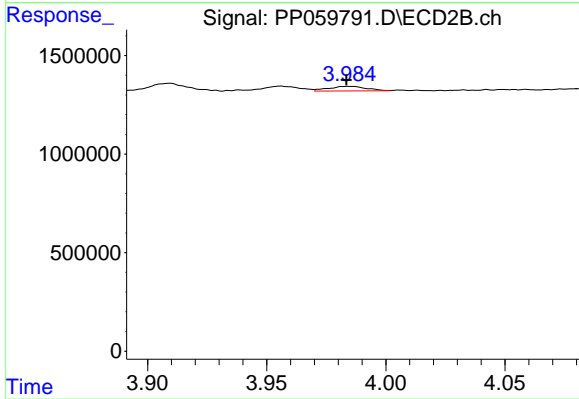
#9 AR-1221-2

R.T.: 3.909 min  
 Delta R.T.: 0.002 min  
 Response: 453439  
 Conc: 24.87 ng/ml



#10 AR-1221-3

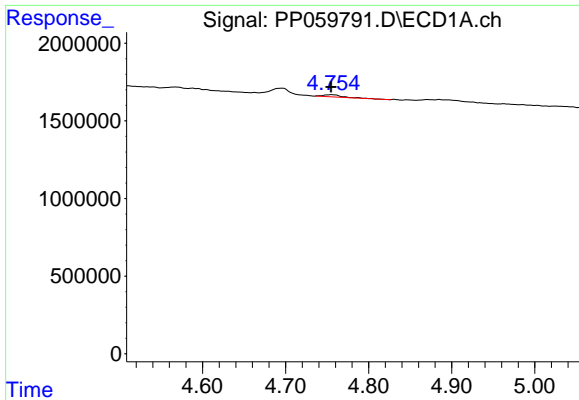
R.T.: 4.755 min  
 Delta R.T.: 0.000 min  
 Response: 219294  
 Conc: 5.45 ng/ml



#10 AR-1221-3

R.T.: 3.984 min  
 Delta R.T.: 0.000 min  
 Response: 257931  
 Conc: 4.60 ng/ml

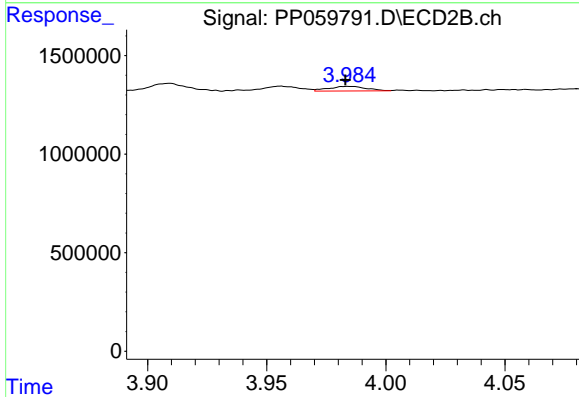




#11 AR-1232-1

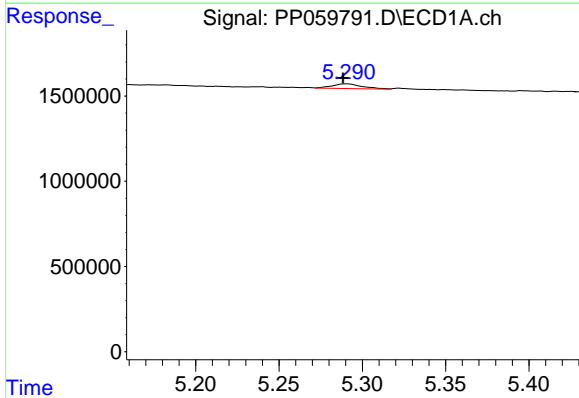
R.T.: 4.755 min  
 Delta R.T.: 0.000 min  
 Response: 219294  
 Conc: 6.68 ng/ml

Instrument :  
 ECD\_P  
 ClientSampleId :



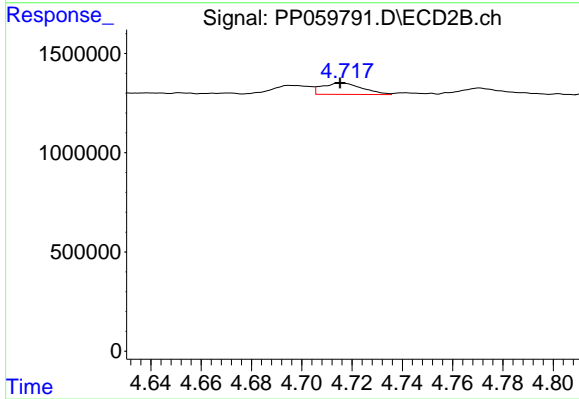
#11 AR-1232-1

R.T.: 3.984 min  
 Delta R.T.: 0.000 min  
 Response: 257931  
 Conc: 5.85 ng/ml



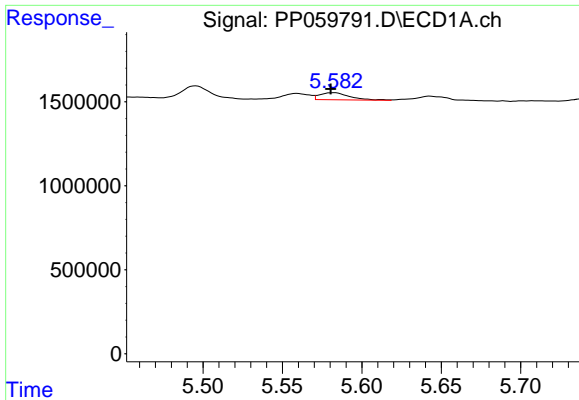
#12 AR-1232-2

R.T.: 5.291 min  
 Delta R.T.: 0.002 min  
 Response: 352307  
 Conc: 19.13 ng/ml



#12 AR-1232-2

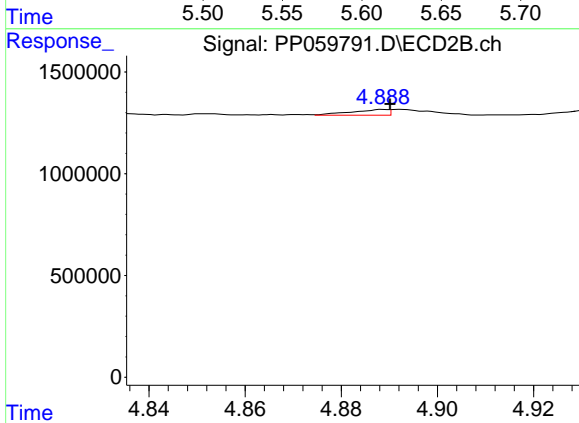
R.T.: 4.715 min  
 Delta R.T.: 0.000 min  
 Response: 633033  
 Conc: 15.95 ng/ml



#13 AR-1232-3

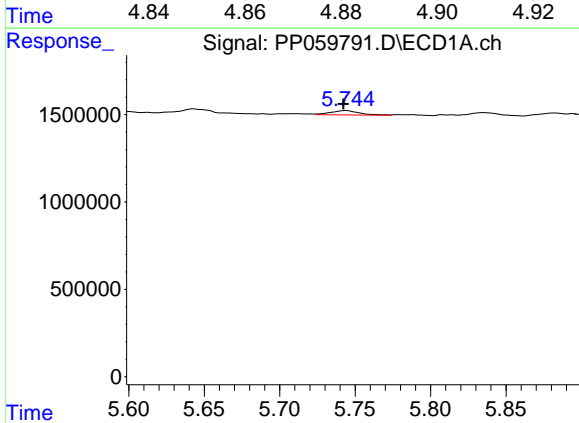
R.T.: 5.583 min  
 Delta R.T.: 0.002 min  
 Response: 557680  
 Conc: 17.64 ng/ml

Instrument :  
 ECD\_P  
 ClientSampleId :



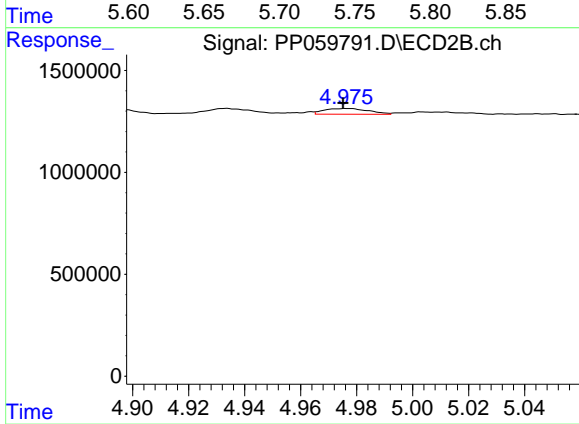
#13 AR-1232-3

R.T.: 4.889 min  
 Delta R.T.: -0.001 min  
 Response: 148504  
 Conc: 7.25 ng/ml



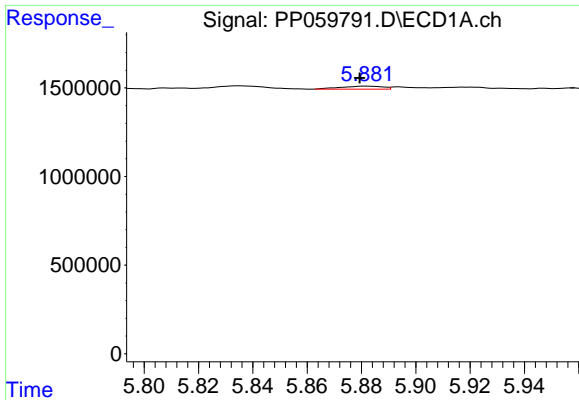
#14 AR-1232-4

R.T.: 5.744 min  
 Delta R.T.: 0.002 min  
 Response: 333988  
 Conc: 20.65 ng/ml



#14 AR-1232-4

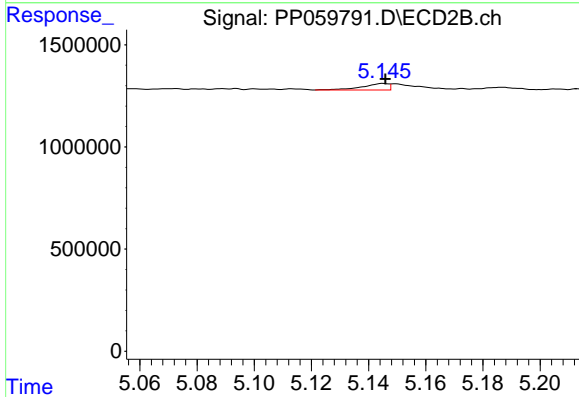
R.T.: 4.976 min  
 Delta R.T.: 0.000 min  
 Response: 316391  
 Conc: 15.82 ng/ml



#15 AR-1232-5

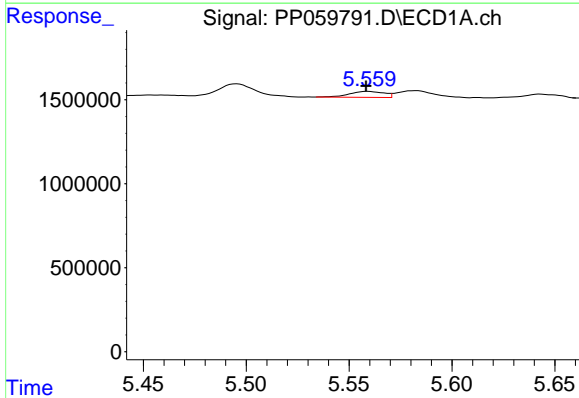
R.T.: 5.882 min  
 Delta R.T.: 0.003 min  
 Response: 181074  
 Conc: 13.46 ng/ml

Instrument :  
 ECD\_P  
 ClientSampleId :



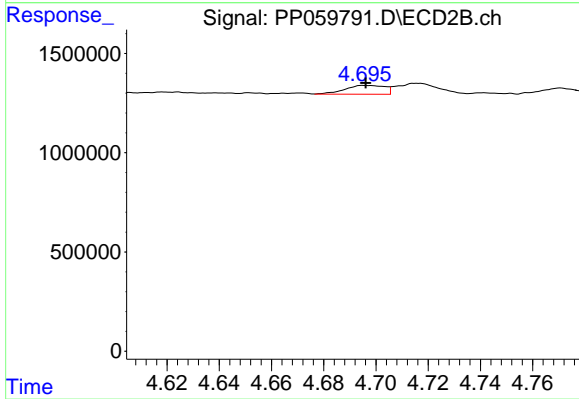
#15 AR-1232-5

R.T.: 5.145 min  
 Delta R.T.: 0.000 min  
 Response: 202451  
 Conc: 9.37 ng/ml



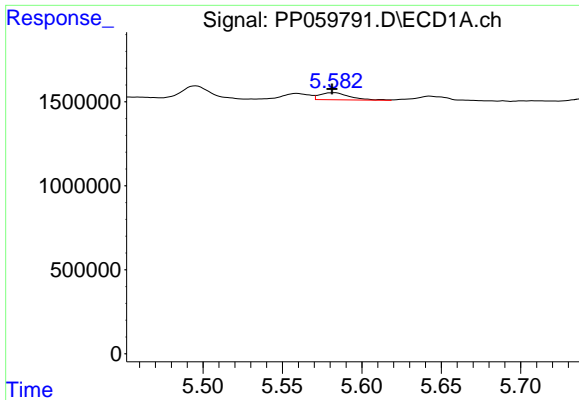
#16 AR-1242-1

R.T.: 5.559 min  
 Delta R.T.: 0.000 min  
 Response: 420288  
 Conc: 10.25 ng/ml



#16 AR-1242-1

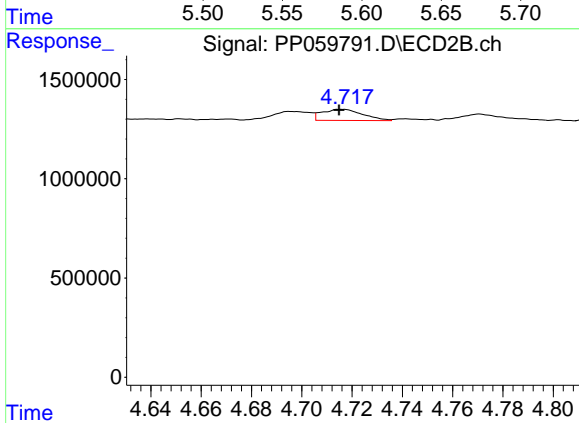
R.T.: 4.695 min  
 Delta R.T.: 0.000 min  
 Response: 469699  
 Conc: 9.27 ng/ml



#17 AR-1242-2

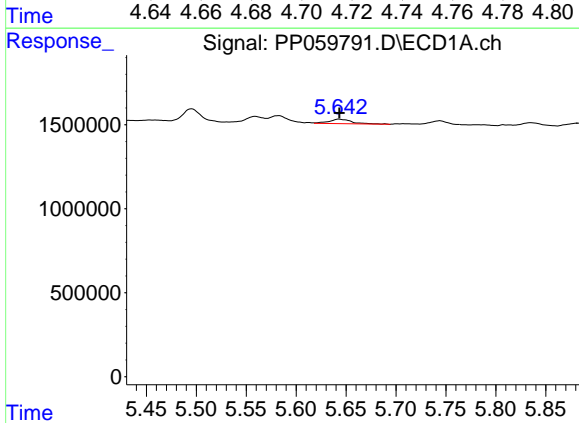
R.T.: 5.583 min  
 Delta R.T.: 0.001 min  
 Response: 557680  
 Conc: 9.39 ng/ml

Instrument :  
 ECD\_P  
 ClientSampleId :



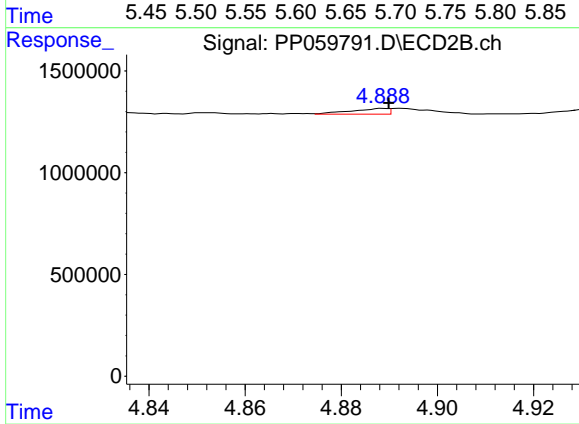
#17 AR-1242-2

R.T.: 4.715 min  
 Delta R.T.: 0.000 min  
 Response: 633033  
 Conc: 8.52 ng/ml



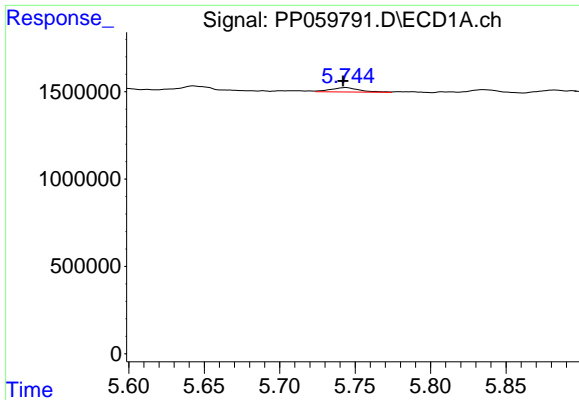
#18 AR-1242-3

R.T.: 5.643 min  
 Delta R.T.: 0.000 min  
 Response: 421147  
 Conc: 11.25 ng/ml



#18 AR-1242-3

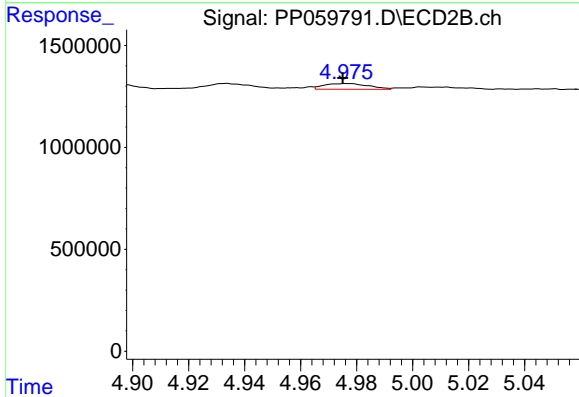
R.T.: 4.889 min  
 Delta R.T.: -0.001 min  
 Response: 148504  
 Conc: 3.79 ng/ml



#19 AR-1242-4

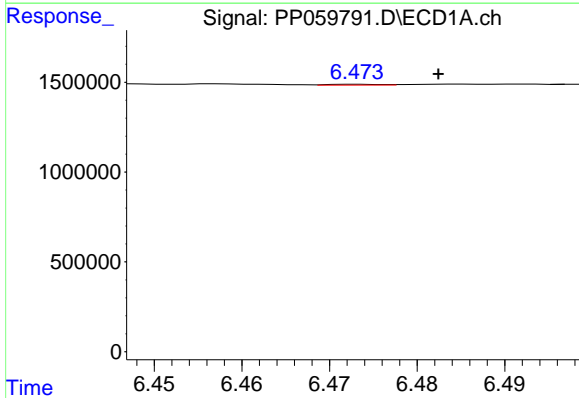
R.T.: 5.744 min  
 Delta R.T.: 0.002 min  
 Response: 333988  
 Conc: 10.90 ng/ml

Instrument :  
 ECD\_P  
 ClientSampleId :



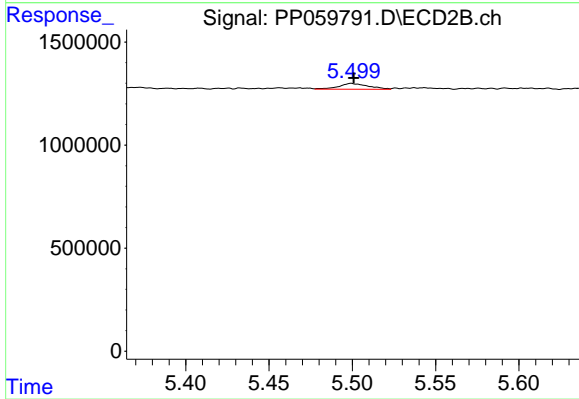
#19 AR-1242-4

R.T.: 4.976 min  
 Delta R.T.: 0.000 min  
 Response: 316391  
 Conc: 7.69 ng/ml



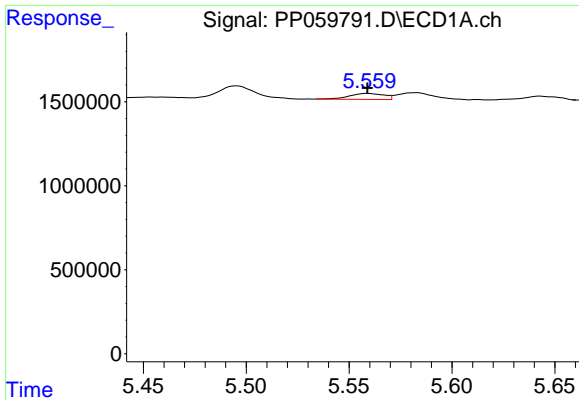
#20 AR-1242-5

R.T.: 6.473 min  
 Delta R.T.: -0.009 min  
 Response: 19923  
 Conc: 0.71 ng/ml



#20 AR-1242-5

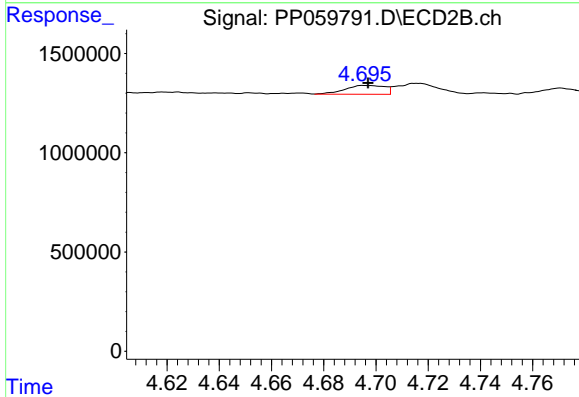
R.T.: 5.499 min  
 Delta R.T.: -0.001 min  
 Response: 352519  
 Conc: 7.50 ng/ml



#21 AR-1248-1

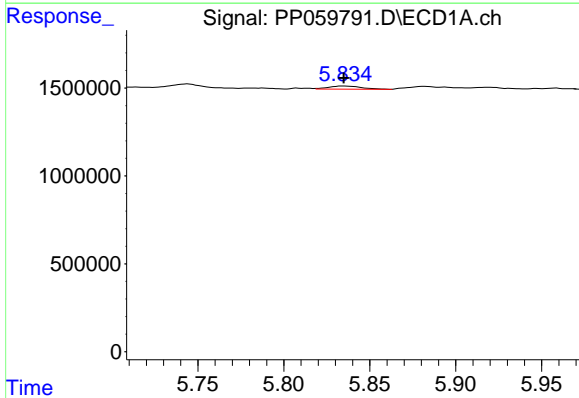
R.T.: 5.559 min  
 Delta R.T.: 0.000 min  
 Response: 420288  
 Conc: 14.32 ng/ml

Instrument :  
 ECD\_P  
 ClientSampleId :



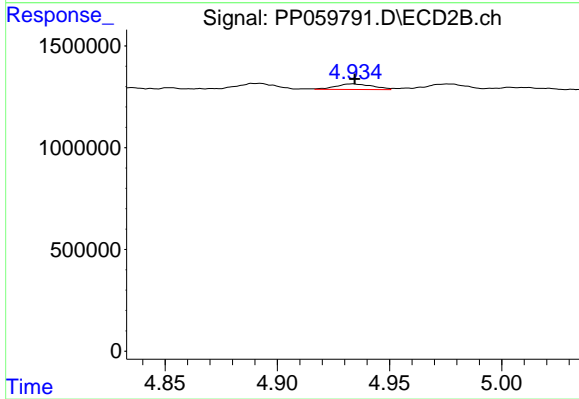
#21 AR-1248-1

R.T.: 4.695 min  
 Delta R.T.: -0.002 min  
 Response: 469699  
 Conc: 12.93 ng/ml



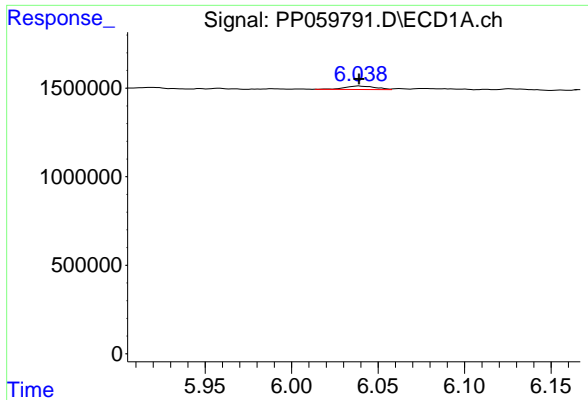
#22 AR-1248-2

R.T.: 5.835 min  
 Delta R.T.: 0.000 min  
 Response: 238909  
 Conc: 5.51 ng/ml



#22 AR-1248-2

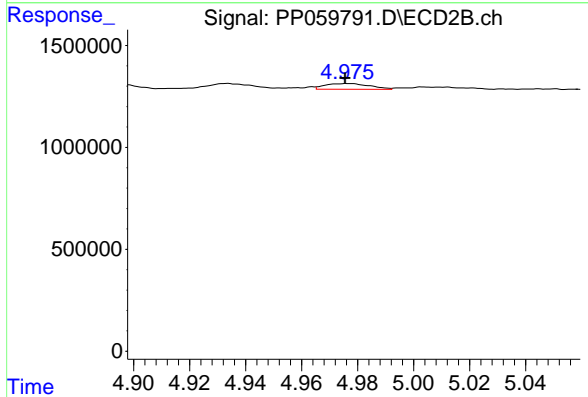
R.T.: 4.934 min  
 Delta R.T.: 0.000 min  
 Response: 310797  
 Conc: 5.68 ng/ml



#23 AR-1248-3

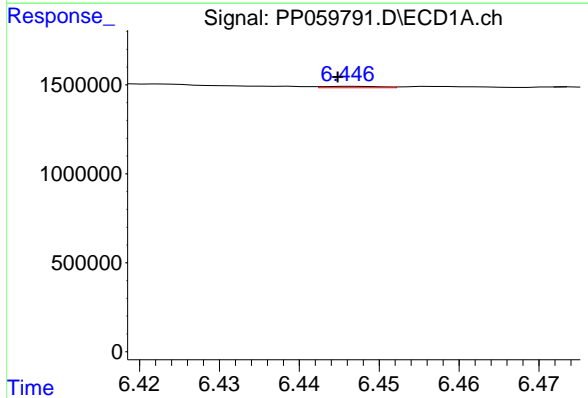
R.T.: 6.039 min  
 Delta R.T.: 0.000 min  
 Response: 240900  
 Conc: 5.20 ng/ml

Instrument :  
 ECD\_P  
 ClientSampleId :



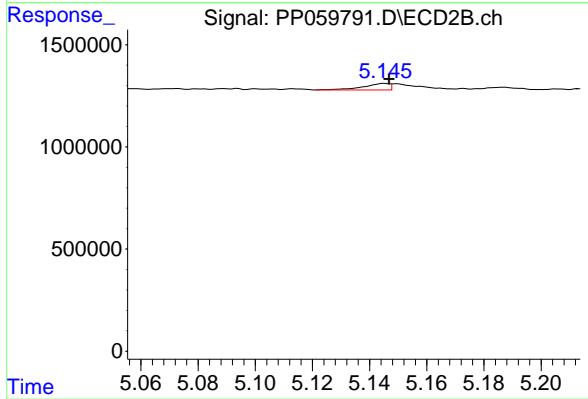
#23 AR-1248-3

R.T.: 4.976 min  
 Delta R.T.: 0.000 min  
 Response: 316391  
 Conc: 5.52 ng/ml



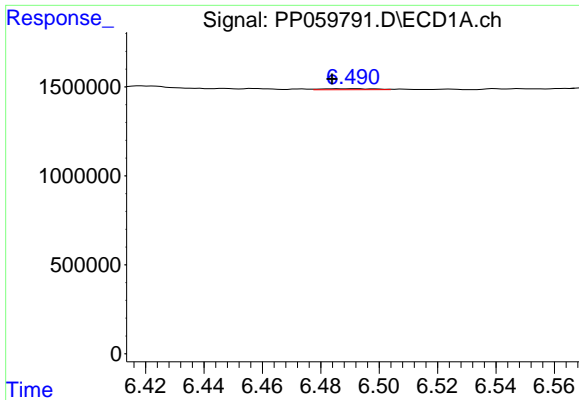
#24 AR-1248-4

R.T.: 6.447 min  
 Delta R.T.: 0.002 min  
 Response: 38516  
 Conc: 0.85 ng/ml



#24 AR-1248-4

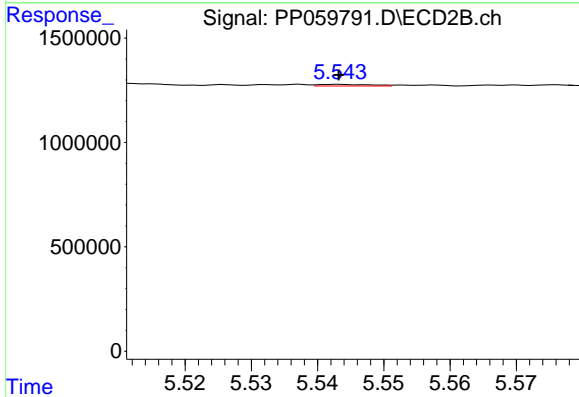
R.T.: 5.145 min  
 Delta R.T.: -0.002 min  
 Response: 202451  
 Conc: 3.05 ng/ml



#25 AR-1248-5

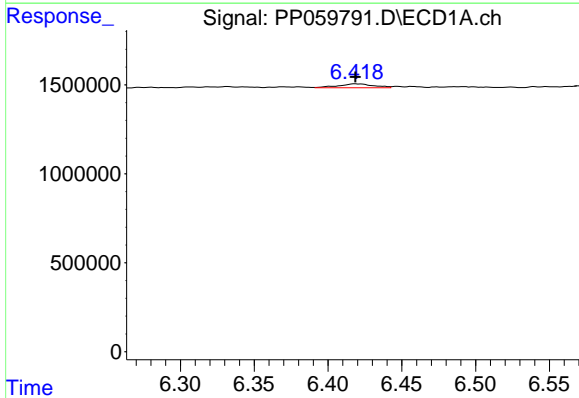
R.T.: 6.492 min  
 Delta R.T.: 0.008 min  
 Response: 72421  
 Conc: 1.63 ng/ml

Instrument :  
 ECD\_P  
 ClientSampleId :



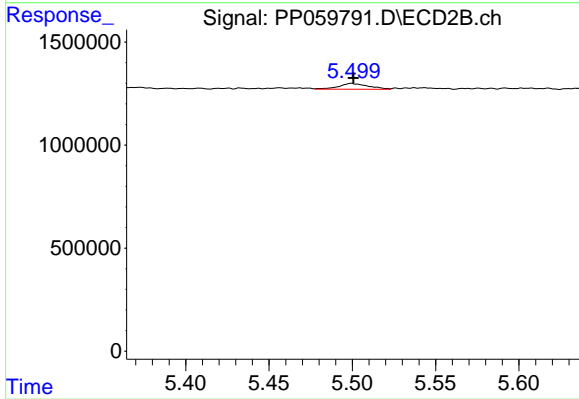
#25 AR-1248-5

R.T.: 5.543 min  
 Delta R.T.: 0.000 min  
 Response: 43276  
 Conc: 0.72 ng/ml



#26 AR-1254-1

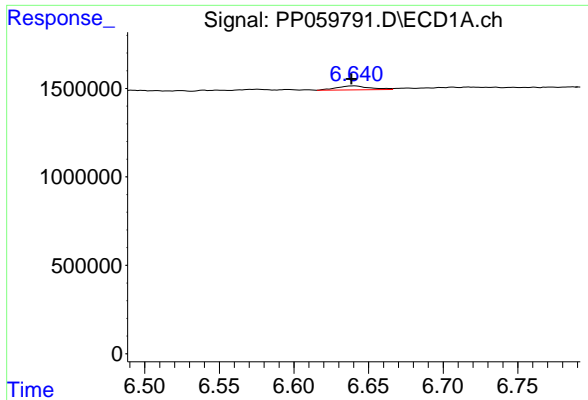
R.T.: 6.419 min  
 Delta R.T.: 0.000 min  
 Response: 364638  
 Conc: 7.15 ng/ml



#26 AR-1254-1

R.T.: 5.499 min  
 Delta R.T.: -0.001 min  
 Response: 352519  
 Conc: 3.66 ng/ml

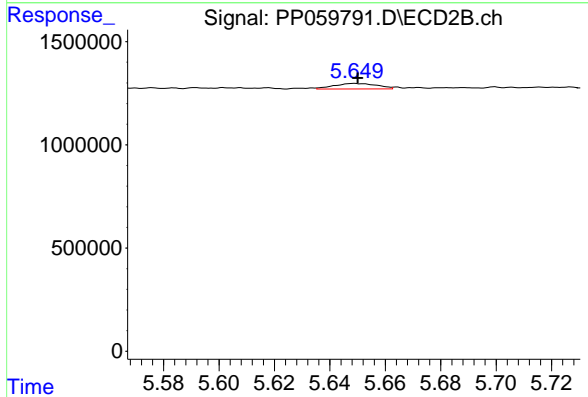




#27 AR-1254-2

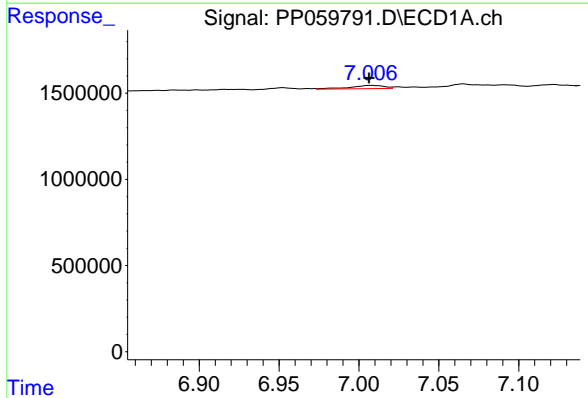
R.T.: 6.640 min  
 Delta R.T.: 0.002 min  
 Response: 339686  
 Conc: 4.72 ng/ml

Instrument :  
 ECD\_P  
 ClientSampleId :



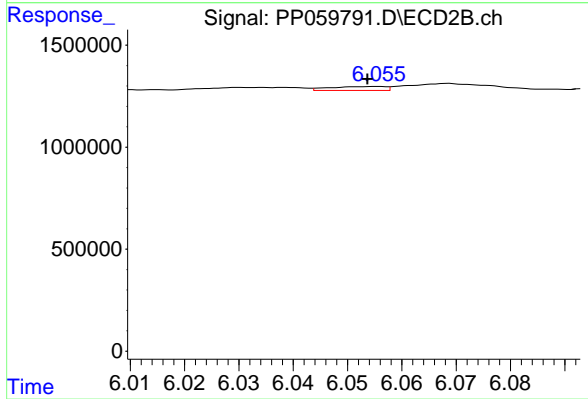
#27 AR-1254-2

R.T.: 5.649 min  
 Delta R.T.: 0.000 min  
 Response: 291051  
 Conc: 3.47 ng/ml



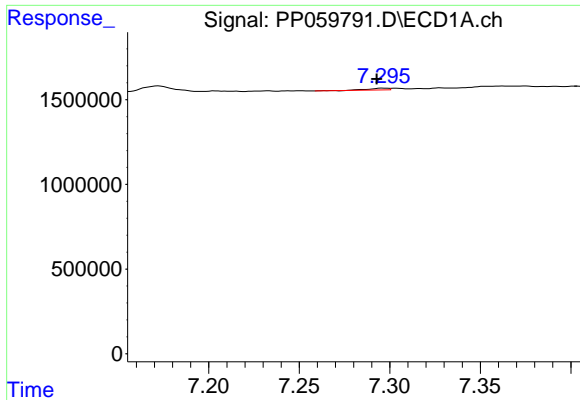
#28 AR-1254-3

R.T.: 7.007 min  
 Delta R.T.: 0.000 min  
 Response: 281277  
 Conc: 4.01 ng/ml



#28 AR-1254-3

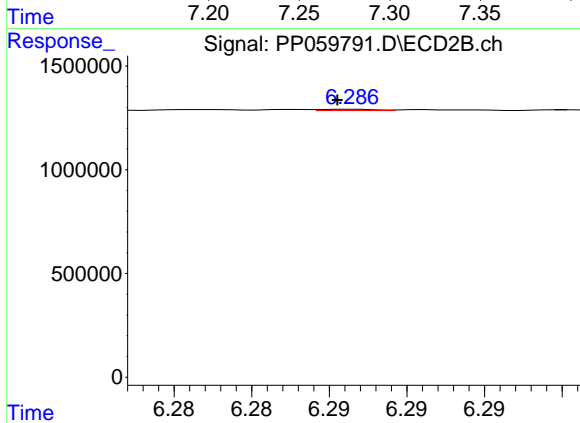
R.T.: 6.056 min  
 Delta R.T.: 0.002 min  
 Response: 136035  
 Conc: 1.07 ng/ml



#29 AR-1254-4

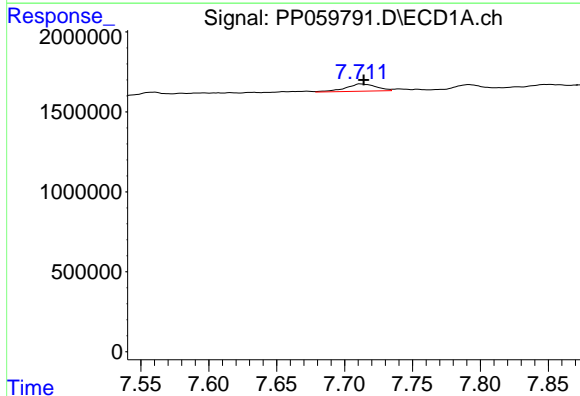
R.T.: 7.296 min  
 Delta R.T.: 0.004 min  
 Response: 79819  
 Conc: 1.67 ng/ml

Instrument :  
 ECD\_P  
 ClientSampleId :



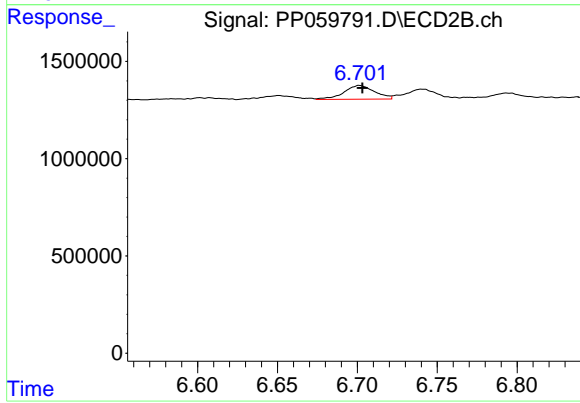
#29 AR-1254-4

R.T.: 6.287 min  
 Delta R.T.: 0.001 min  
 Response: 15175  
 Conc: 0.21 ng/ml



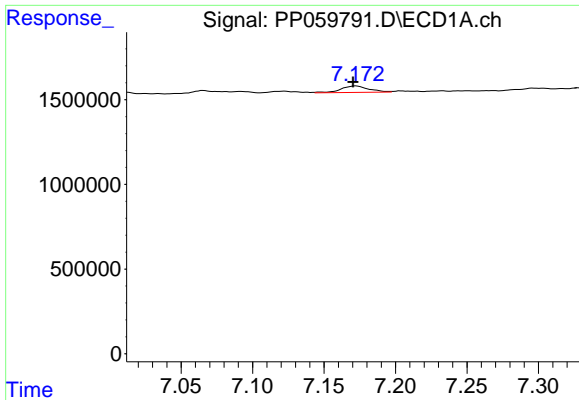
#30 AR-1254-5

R.T.: 7.712 min  
 Delta R.T.: -0.002 min  
 Response: 714329  
 Conc: 13.69 ng/ml



#30 AR-1254-5

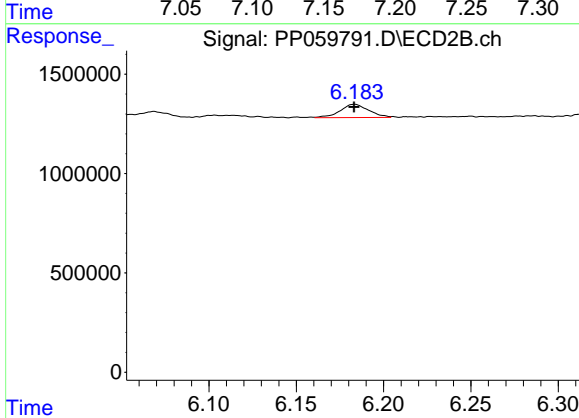
R.T.: 6.701 min  
 Delta R.T.: -0.002 min  
 Response: 948768  
 Conc: 8.54 ng/ml



#31 AR-1260-1

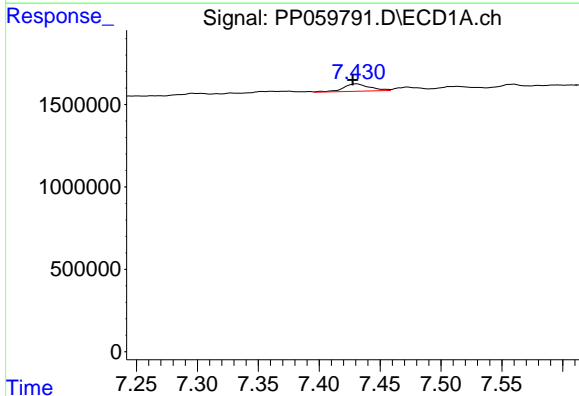
R.T.: 7.172 min  
 Delta R.T.: 0.002 min  
 Response: 518345  
 Conc: 8.84 ng/ml

Instrument :  
 ECD\_P  
 ClientSampleId :



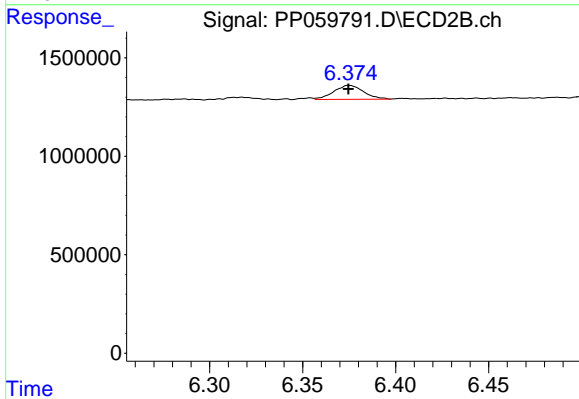
#31 AR-1260-1

R.T.: 6.184 min  
 Delta R.T.: 0.000 min  
 Response: 761695  
 Conc: 7.92 ng/ml



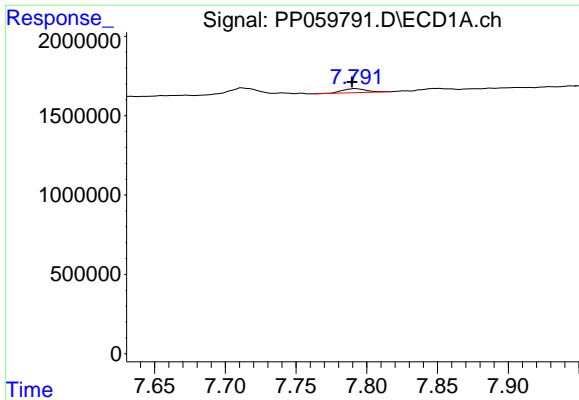
#32 AR-1260-2

R.T.: 7.431 min  
 Delta R.T.: 0.003 min  
 Response: 670058  
 Conc: 10.70 ng/ml



#32 AR-1260-2

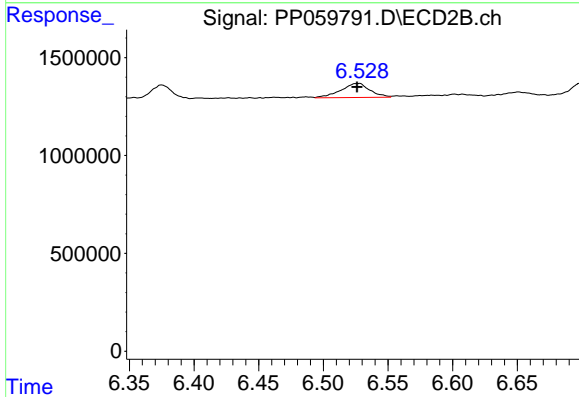
R.T.: 6.375 min  
 Delta R.T.: 0.000 min  
 Response: 796984  
 Conc: 7.34 ng/ml



#33 AR-1260-3

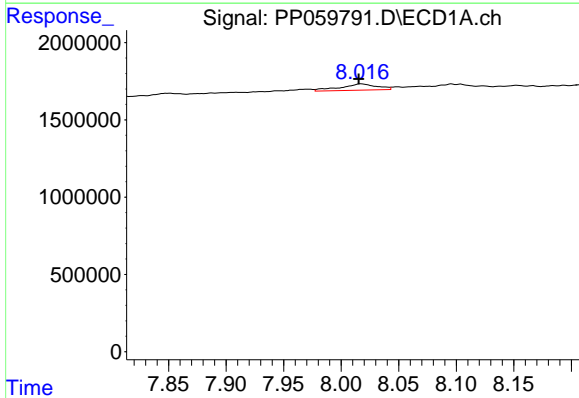
R.T.: 7.792 min  
 Delta R.T.: 0.002 min  
 Response: 299138  
 Conc: 5.94 ng/ml

Instrument :  
 ECD\_P  
 ClientSampleId :



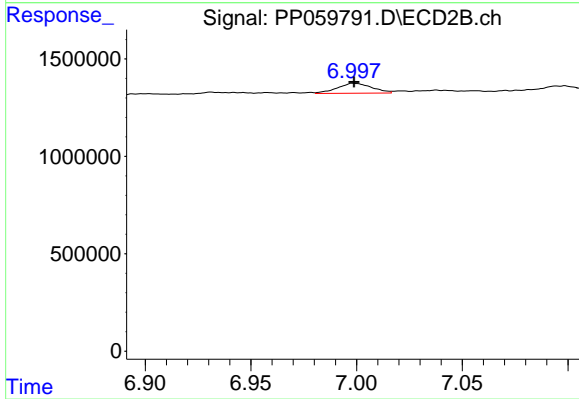
#33 AR-1260-3

R.T.: 6.528 min  
 Delta R.T.: 0.002 min  
 Response: 1126592  
 Conc: 10.89 ng/ml



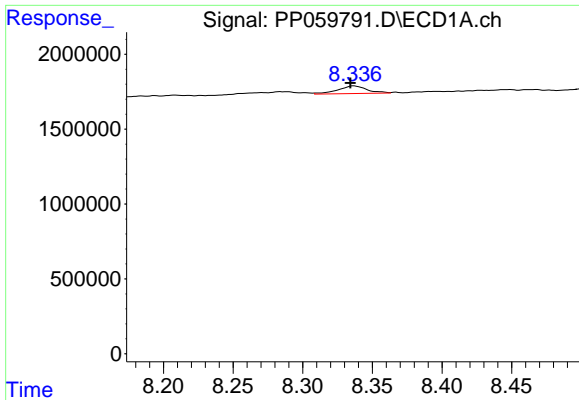
#34 AR-1260-4

R.T.: 8.017 min  
 Delta R.T.: 0.002 min  
 Response: 903269  
 Conc: 15.94 ng/ml



#34 AR-1260-4

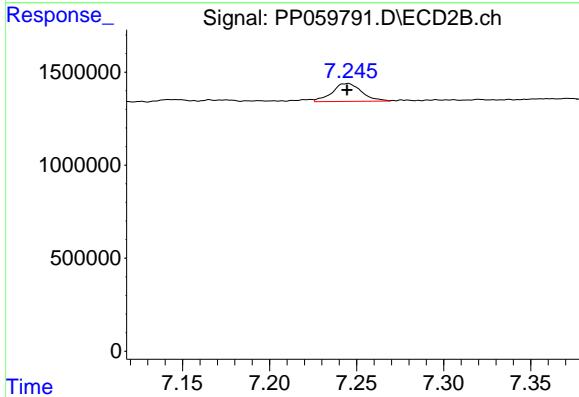
R.T.: 6.998 min  
 Delta R.T.: 0.000 min  
 Response: 585562  
 Conc: 7.06 ng/ml



#35 AR-1260-5

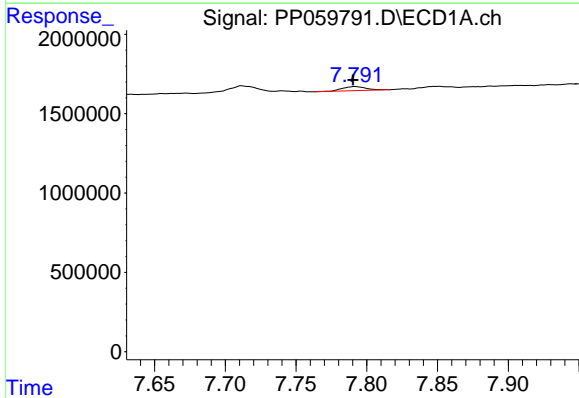
R.T.: 8.337 min  
 Delta R.T.: 0.002 min  
 Response: 748045  
 Conc: 7.73 ng/ml

Instrument :  
 ECD\_P  
 ClientSampleId :



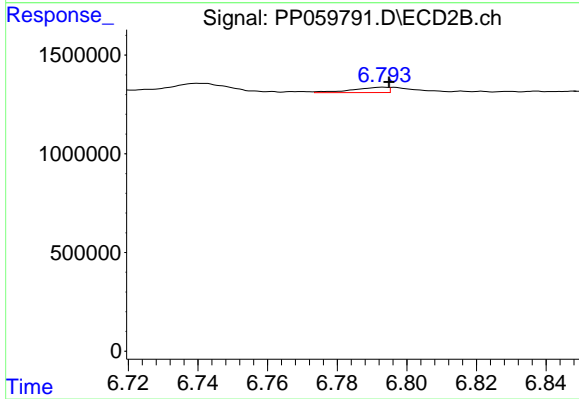
#35 AR-1260-5

R.T.: 7.245 min  
 Delta R.T.: 0.001 min  
 Response: 1137930  
 Conc: 6.55 ng/ml



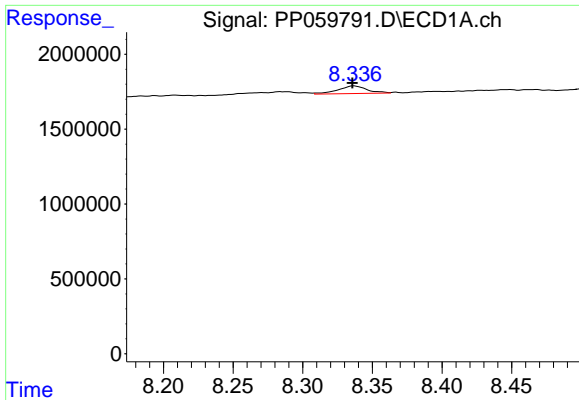
#36 AR-1262-1

R.T.: 7.792 min  
 Delta R.T.: 0.001 min  
 Response: 299138  
 Conc: 4.46 ng/ml



#36 AR-1262-1

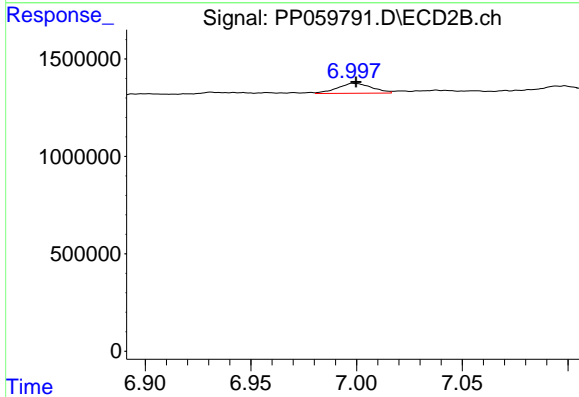
R.T.: 6.793 min  
 Delta R.T.: -0.002 min  
 Response: 192215  
 Conc: 3.87 ng/ml



#37 AR-1262-2

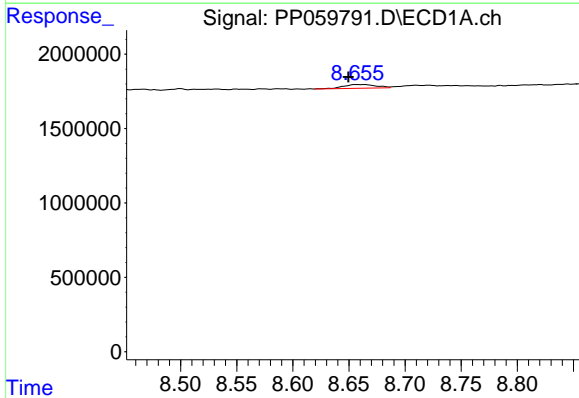
R.T.: 8.337 min  
 Delta R.T.: 0.001 min  
 Response: 748045  
 Conc: 7.36 ng/ml

Instrument :  
 ECD\_P  
 ClientSampleId :



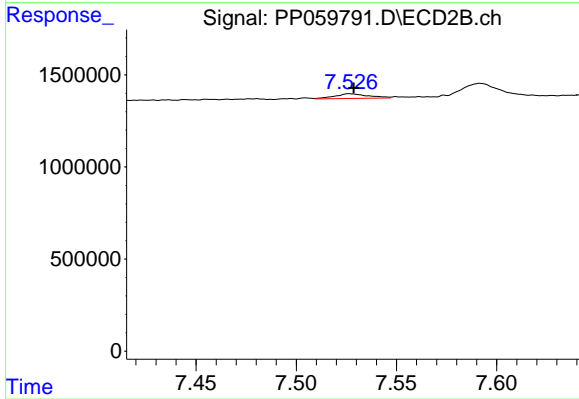
#37 AR-1262-2

R.T.: 6.998 min  
 Delta R.T.: -0.002 min  
 Response: 585562  
 Conc: 5.86 ng/ml



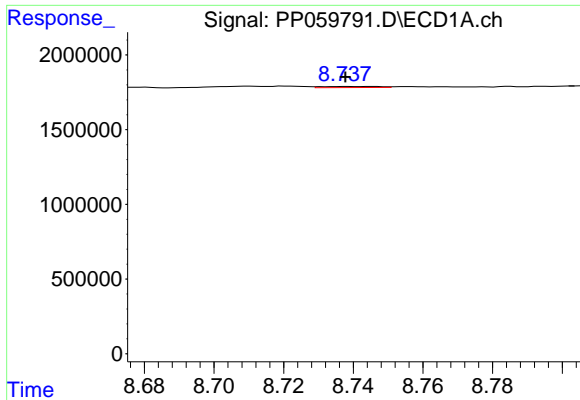
#38 AR-1262-3

R.T.: 8.657 min  
 Delta R.T.: 0.007 min  
 Response: 492530  
 Conc: 6.79 ng/ml



#38 AR-1262-3

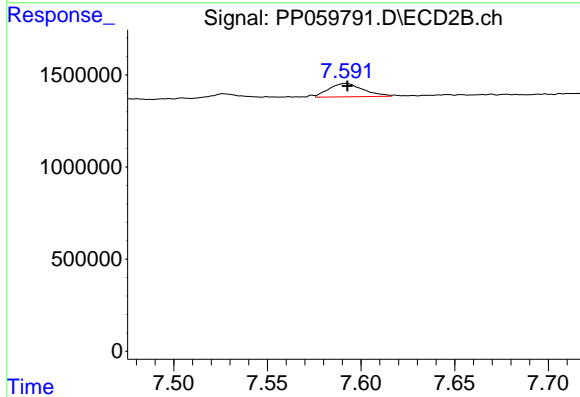
R.T.: 7.526 min  
 Delta R.T.: -0.002 min  
 Response: 302399  
 Conc: 4.14 ng/ml



#39 AR-1262-4

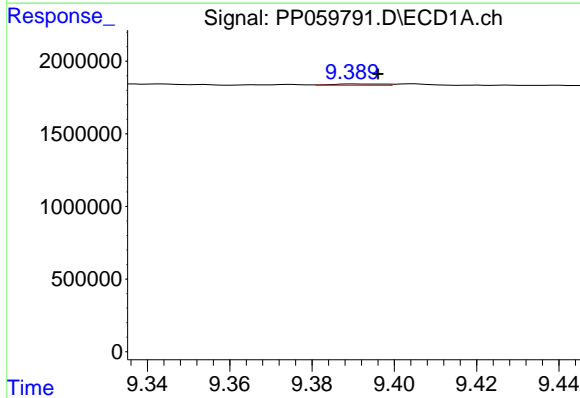
R.T.: 8.745 min  
 Delta R.T.: 0.007 min  
 Response: 87565  
 Conc: 2.30 ng/ml

Instrument :  
 ECD\_P  
 ClientSampleId :



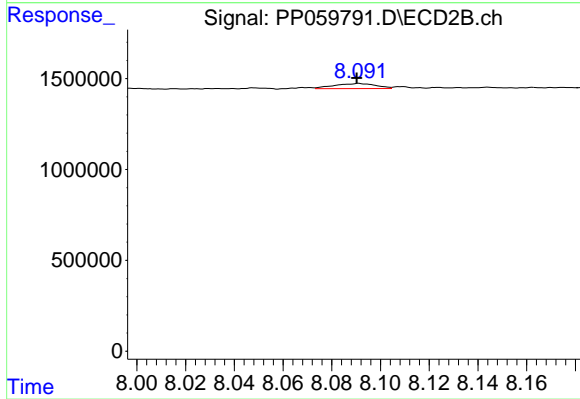
#39 AR-1262-4

R.T.: 7.592 min  
 Delta R.T.: -0.001 min  
 Response: 927774  
 Conc: 7.21 ng/ml



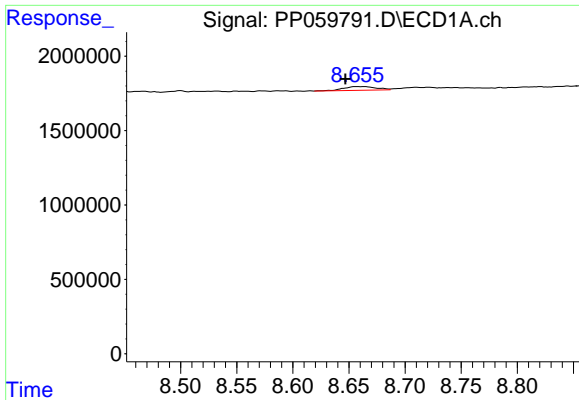
#40 AR-1262-5

R.T.: 9.390 min  
 Delta R.T.: -0.006 min  
 Response: 78108  
 Conc: 2.21 ng/ml



#40 AR-1262-5

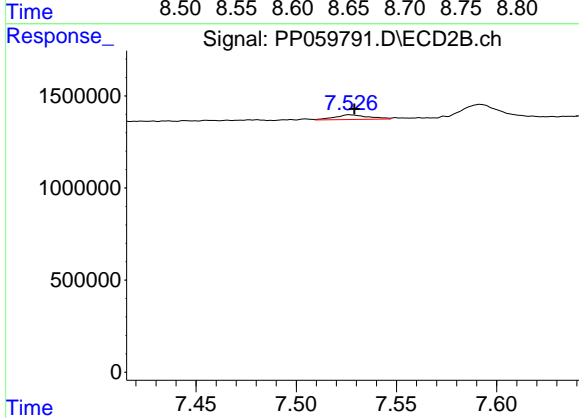
R.T.: 8.091 min  
 Delta R.T.: 0.000 min  
 Response: 328717  
 Conc: 5.91 ng/ml



#41 AR-1268-1

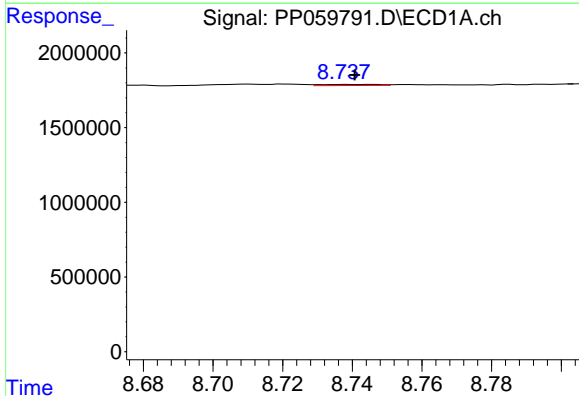
R.T.: 8.657 min  
 Delta R.T.: 0.010 min  
 Response: 492530  
 Conc: 3.73 ng/ml

Instrument :  
 ECD\_P  
 ClientSampleId :



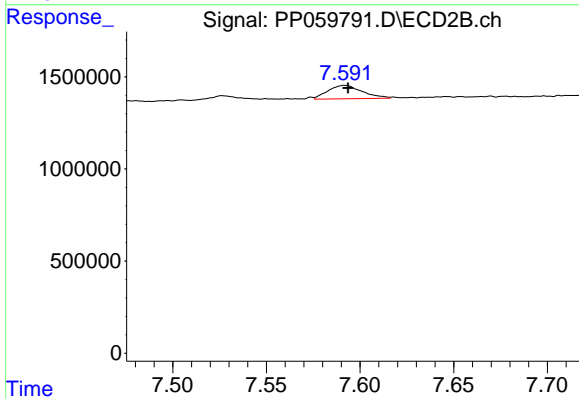
#41 AR-1268-1

R.T.: 7.526 min  
 Delta R.T.: -0.003 min  
 Response: 302399  
 Conc: 1.43 ng/ml



#42 AR-1268-2

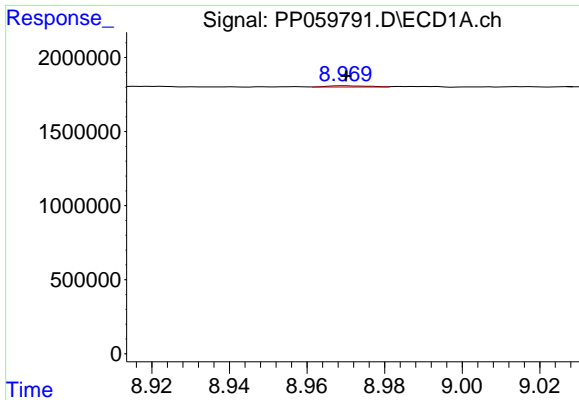
R.T.: 8.745 min  
 Delta R.T.: 0.004 min  
 Response: 87565  
 Conc: 0.74 ng/ml



#42 AR-1268-2

R.T.: 7.592 min  
 Delta R.T.: -0.002 min  
 Response: 927774  
 Conc: 4.89 ng/ml

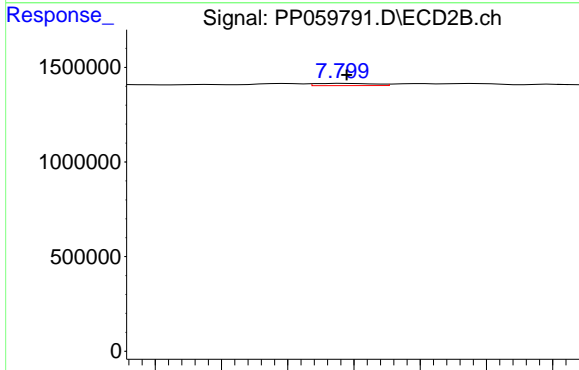




#43 AR-1268-3

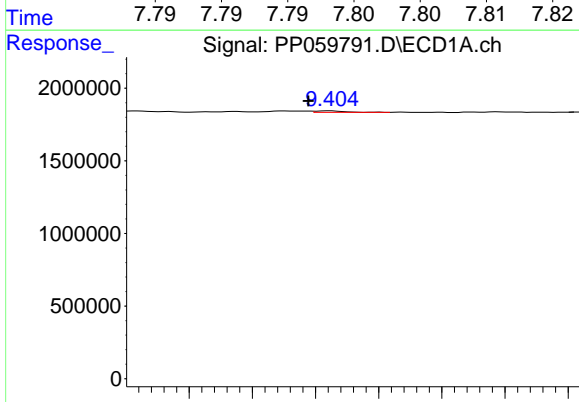
R.T.: 8.970 min  
 Delta R.T.: 0.000 min  
 Response: 64449  
 Conc: 0.59 ng/ml

Instrument :  
 ECD\_P  
 ClientSampleId :



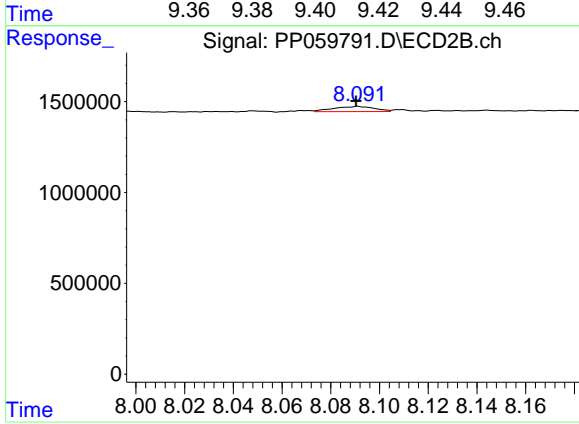
#43 AR-1268-3

R.T.: 7.799 min  
 Delta R.T.: 0.000 min  
 Response: 36687  
 Conc: 0.22 ng/ml



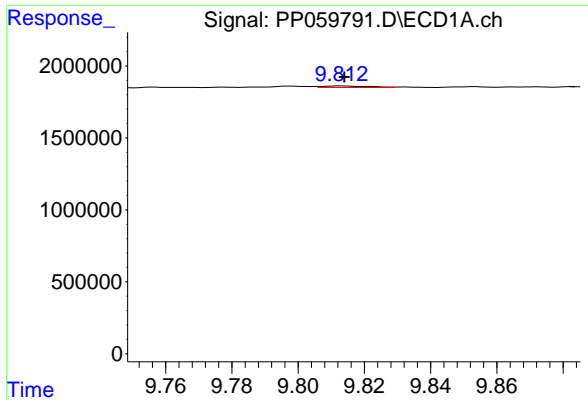
#44 AR-1268-4

R.T.: 9.405 min  
 Delta R.T.: 0.007 min  
 Response: 62905  
 Conc: 1.61 ng/ml



#44 AR-1268-4

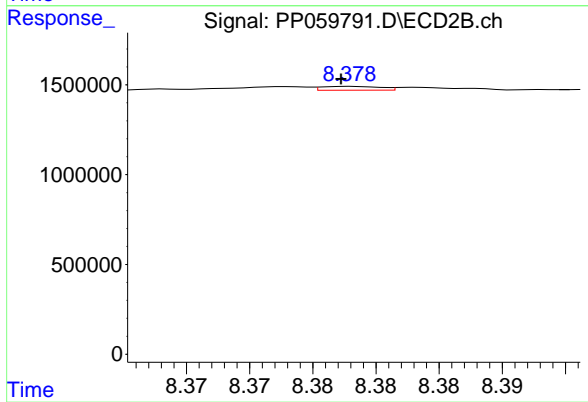
R.T.: 8.091 min  
 Delta R.T.: 0.000 min  
 Response: 328717  
 Conc: 5.27 ng/ml



#45 AR-1268-5

R.T.: 9.813 min  
Delta R.T.: 0.000 min  
Response: 99506  
Conc: 0.31 ng/ml

Instrument :  
ECD\_P  
ClientSampleId :



#45 AR-1268-5

R.T.: 8.378 min  
Delta R.T.: 0.000 min  
Response: 69741  
Conc: 0.16 ng/ml