

Data Path : Z:\pestpcbsrv\HPCHEM1\ECD_P\Data\PP091123\
 Data File : PP059842.D
 Signal(s) : Signal #1: ECD1A.ch Signal #2: ECD2B.ch
 Acq On : 12 Sep 2023 01:39
 Operator : YP\AJ
 Sample : AR1254ICV500
 Misc :
 ALS Vial : 34 Sample Multiplier: 1

Instrument :
 ECD_P
ClientSampleId :
 ICVPP091123

Integration File signal 1: autoint1.e
 Integration File signal 2: autoint2.e
 Quant Time: Sep 12 04:40:14 2023
 Quant Method : Z:\pestpcbsrv\HPCHEM1\ECD_P\methods\PP091123.M
 Quant Title : GC EXTRACTABLES
 QLast Update : Tue Sep 12 04:36:26 2023
 Response via : Initial Calibration
 Integrator: ChemStation

Volume Inj. : 2 µl
 Signal #1 Phase : ZB-MR1 Signal #2 Phase: ZB-MR2
 Signal #1 Info : 30Mx0.32mmx 0.50µ Signal #2 Info : 30M x 0.32mm x 0.25µm

Compound	RT#1	RT#2	Resp#1	Resp#2	ng/ml	ng/ml

System Monitoring Compounds						
1) SA Tetrachlo...	4.380	3.604	82050610	118.3E6	52.806	53.367
2) SA Decachlor...	10.152	8.618	63092140	93825500	51.636	51.439
Target Compounds						
26) L6 AR-1254-1	6.416	5.495	26994978	59196445	511.596	500.564
27) L6 AR-1254-2	6.636	5.644	38727966	52354482	507.372	501.418
28) L6 AR-1254-3	7.003	6.047	39143307	80165860	506.873	505.755
29) L6 AR-1254-4	7.289	6.280	26571945	47157293	509.830	510.914
30) L6 AR-1254-5	7.710	6.696	30440482	71940892	514.453	512.763

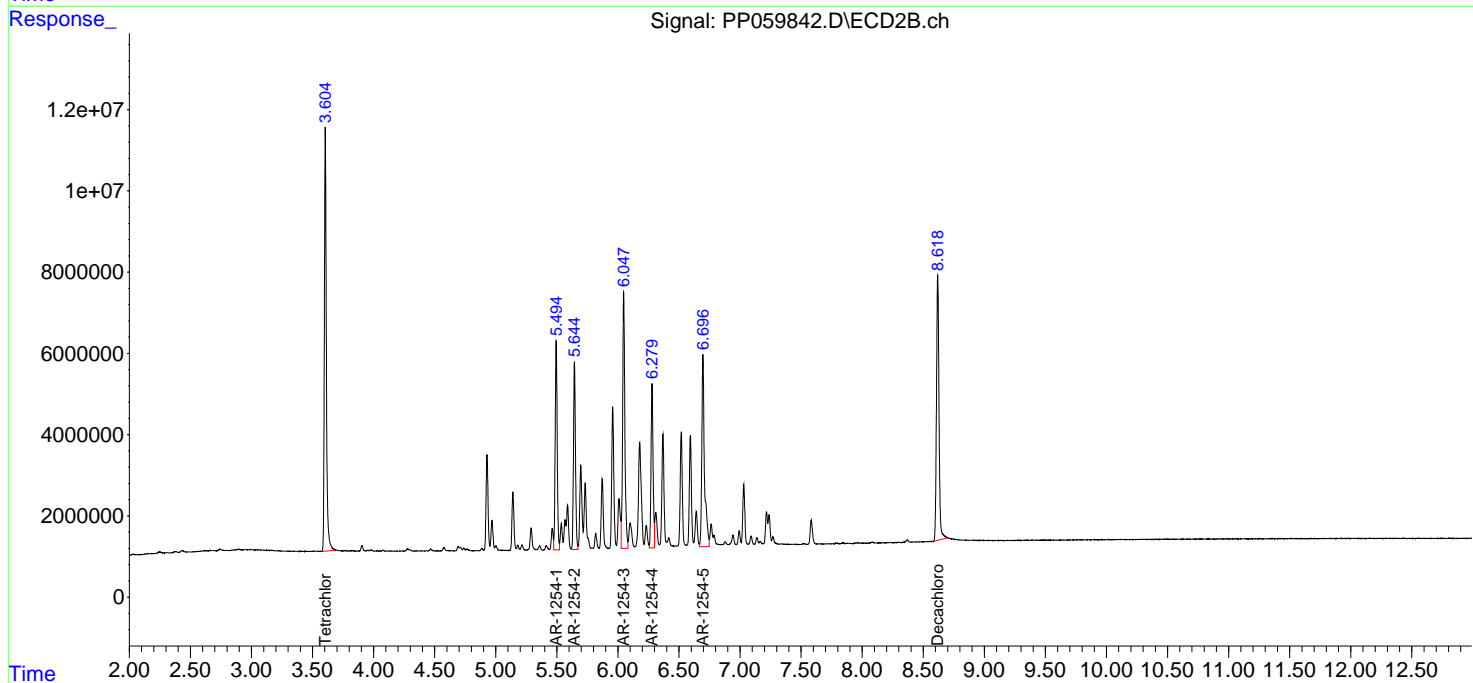
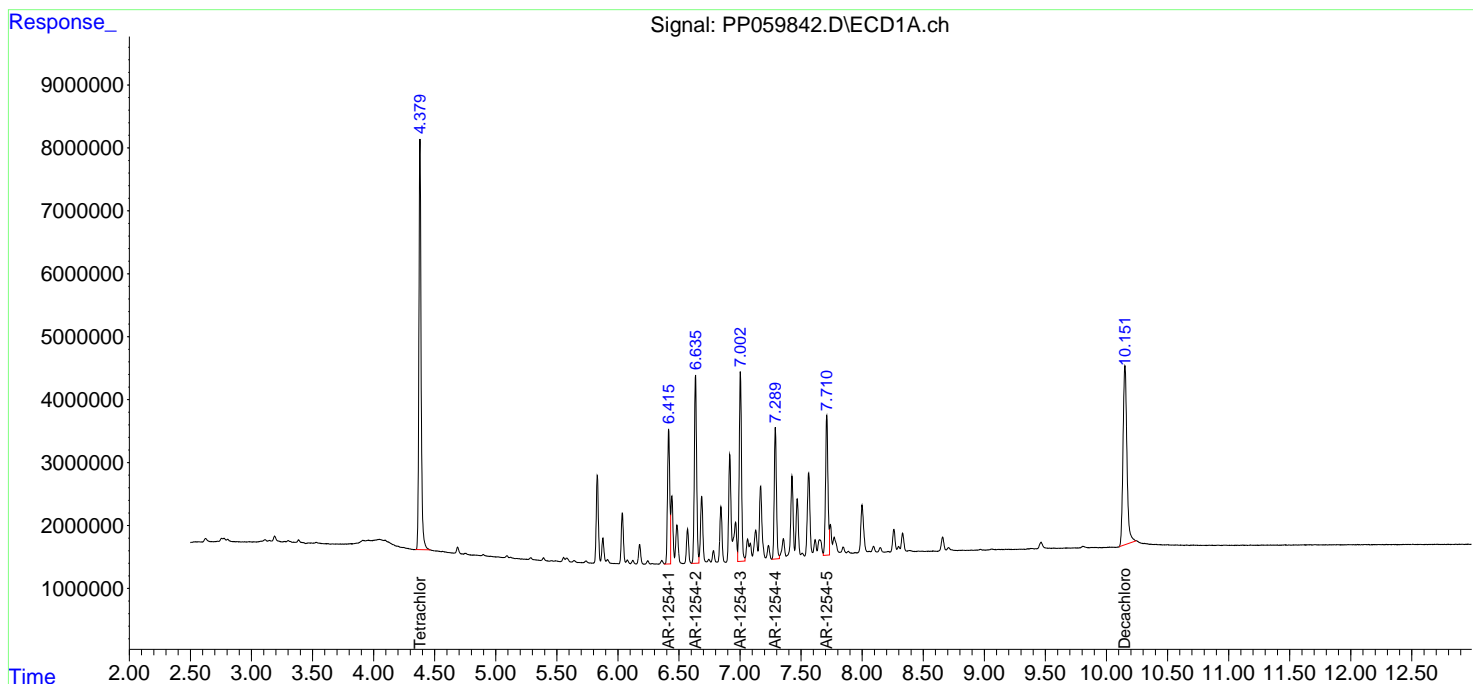
(f)=RT Delta > 1/2 Window (#)=Amounts differ by > 25% (m)=manual int.

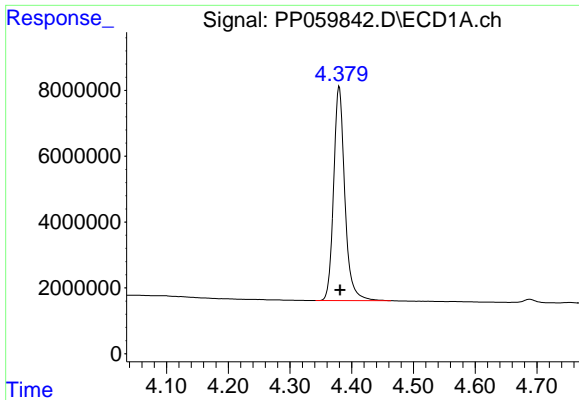
Data Path : Z:\pestpcbsrv\HPCHEM1\ECD_P\Data\PP091123\
 Data File : PP059842.D
 Signal(s) : Signal #1: ECD1A.ch Signal #2: ECD2B.ch
 Acq On : 12 Sep 2023 01:39
 Operator : YP\AJ
 Sample : AR1254ICV500
 Misc :
 ALS Vial : 34 Sample Multiplier: 1

Instrument :
 ECD_P
 ClientSampleId :
 ICVPP091123

Integration File signal 1: autoint1.e
 Integration File signal 2: autoint2.e
 Quant Time: Sep 12 04:40:14 2023
 Quant Method : Z:\pestpcbsrv\HPCHEM1\ECD_P\methods\PP091123.M
 Quant Title : GC EXTRACTABLES
 QLast Update : Tue Sep 12 04:36:26 2023
 Response via : Initial Calibration
 Integrator: ChemStation

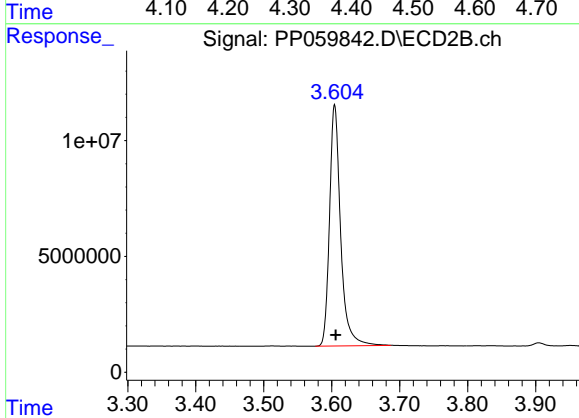
Volume Inj. : 2 µl
 Signal #1 Phase : ZB-MR1 Signal #2 Phase: ZB-MR2
 Signal #1 Info : 30Mx0.32mmx 0.50µ Signal #2 Info : 30M x 0.32mm x 0.25µm



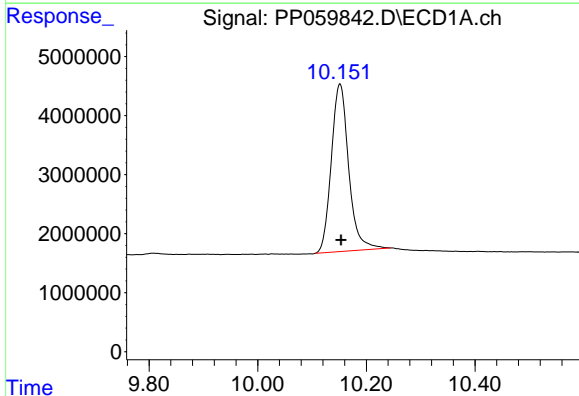


#1 Tetrachloro-m-xylene
 R.T.: 4.380 min
 Delta R.T.: -0.001 min
 Response: 82050610
 Conc: 52.81 ng/ml

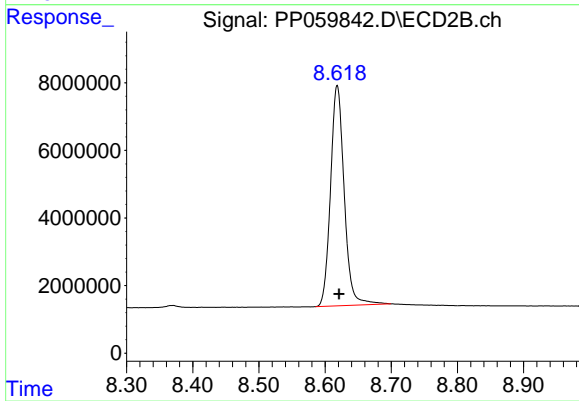
Instrument :
 ECD_P
 ClientSampleId :
 ICVPP091123



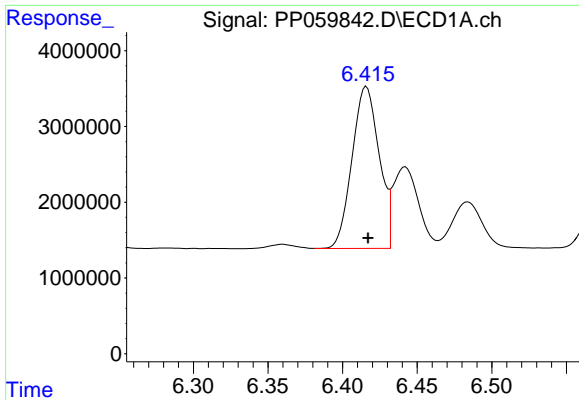
#1 Tetrachloro-m-xylene
 R.T.: 3.604 min
 Delta R.T.: -0.002 min
 Response: 118326981
 Conc: 53.37 ng/ml



#2 Decachlorobiphenyl
 R.T.: 10.152 min
 Delta R.T.: -0.002 min
 Response: 63092140
 Conc: 51.64 ng/ml



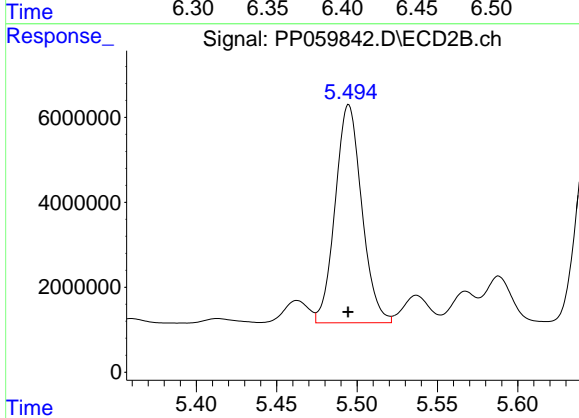
#2 Decachlorobiphenyl
 R.T.: 8.618 min
 Delta R.T.: -0.003 min
 Response: 93825500
 Conc: 51.44 ng/ml



#26 AR-1254-1

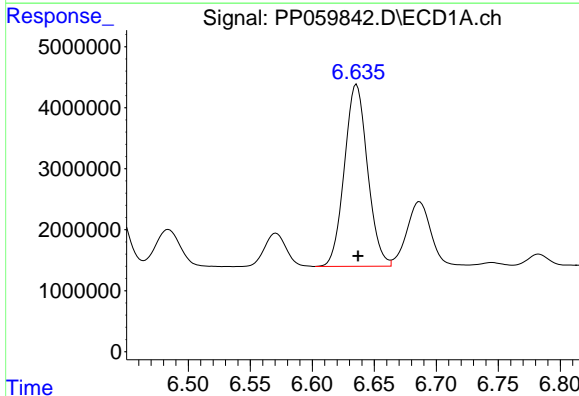
R.T.: 6.416 min
 Delta R.T.: -0.001 min
 Response: 26994978
 Conc: 511.60 ng/ml

Instrument :
 ECD_P
 ClientSampleId :
 ICVPP091123



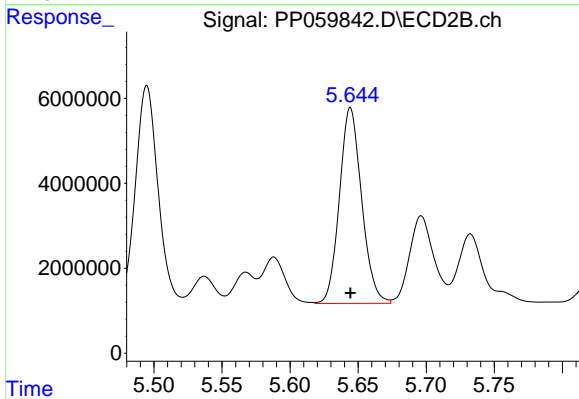
#26 AR-1254-1

R.T.: 5.495 min
 Delta R.T.: 0.000 min
 Response: 59196445
 Conc: 500.56 ng/ml



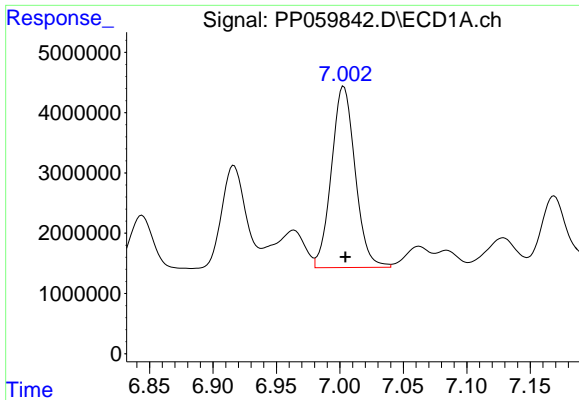
#27 AR-1254-2

R.T.: 6.636 min
 Delta R.T.: -0.001 min
 Response: 38727966
 Conc: 507.37 ng/ml



#27 AR-1254-2

R.T.: 5.644 min
 Delta R.T.: 0.000 min
 Response: 52354482
 Conc: 501.42 ng/ml

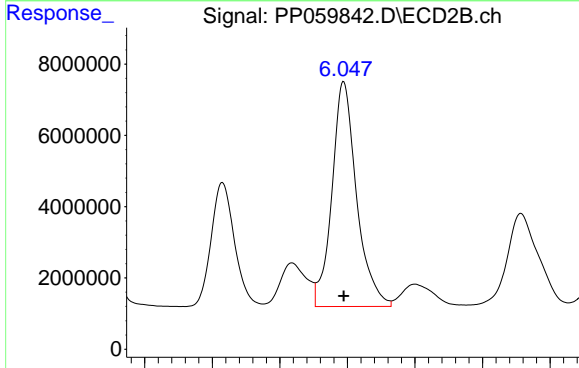


#28 AR-1254-3

R.T.: 7.003 min
 Delta R.T.: -0.001 min
 Response: 39143307
 Conc: 506.87 ng/ml

Instrument :
 ECD_P
 ClientSampleId :
 ICVPP091123

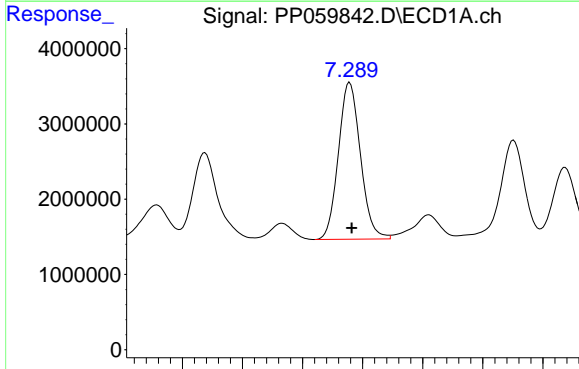
Time 6.85 6.90 6.95 7.00 7.05 7.10 7.15



#28 AR-1254-3

R.T.: 6.047 min
 Delta R.T.: 0.000 min
 Response: 80165860
 Conc: 505.76 ng/ml

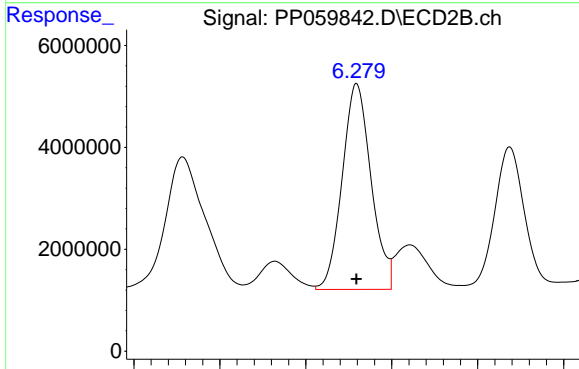
Time 5.90 5.95 6.00 6.05 6.10 6.15 6.20



#29 AR-1254-4

R.T.: 7.289 min
 Delta R.T.: -0.002 min
 Response: 26571945
 Conc: 509.83 ng/ml

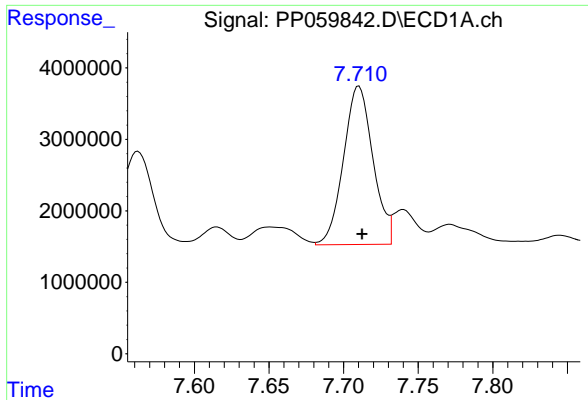
Time 7.15 7.20 7.25 7.30 7.35 7.40 7.45



#29 AR-1254-4

R.T.: 6.280 min
 Delta R.T.: 0.000 min
 Response: 47157293
 Conc: 510.91 ng/ml

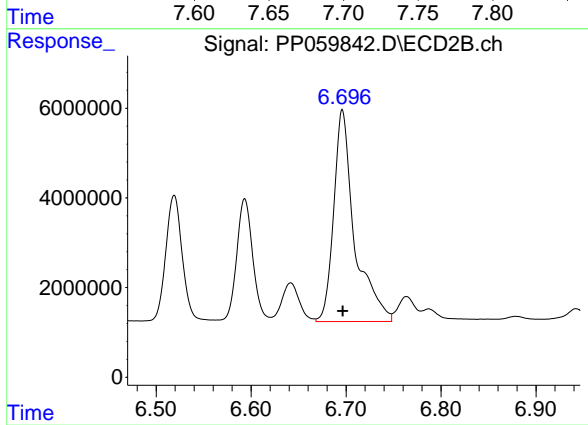
Time 6.15 6.20 6.25 6.30 6.35



#30 AR-1254-5

R.T.: 7.710 min
Delta R.T.: -0.002 min
Response: 30440482
Conc: 514.45 ng/ml

Instrument :
ECD_P
ClientSampleId :
ICVPP091123



#30 AR-1254-5

R.T.: 6.696 min
Delta R.T.: 0.000 min
Response: 71940892
Conc: 512.76 ng/ml