

Data Path : Z:\pestpcbsrv\HPCHEM1\ECD\_P\Data\PP091123\  
 Data File : PP059848.D  
 Signal(s) : Signal #1: ECD1A.ch Signal #2: ECD2B.ch  
 Acq On : 12 Sep 2023 03:17  
 Operator : YP\AJ  
 Sample : PB155452BL  
 Misc :  
 ALS Vial : 38 Sample Multiplier: 1

**Instrument :**  
 ECD\_P  
**ClientSampleId :**  
 PB155452BL

Integration File signal 1: autoint1.e  
 Integration File signal 2: autoint2.e  
 Quant Time: Sep 12 04:42:45 2023  
 Quant Method : Z:\pestpcbsrv\HPCHEM1\ECD\_P\methods\PP091123.M  
 Quant Title : GC EXTRACTABLES  
 QLast Update : Tue Sep 12 04:36:26 2023  
 Response via : Initial Calibration  
 Integrator: ChemStation

Volume Inj. : 2 µl  
 Signal #1 Phase : ZB-MR1 Signal #2 Phase: ZB-MR2  
 Signal #1 Info : 30Mx0.32mmx 0.50µ Signal #2 Info : 30M x 0.32mm x 0.25µm

Compound	RT#1	RT#2	Resp#1	Resp#2	ng/ml	ng/ml
-----						
System Monitoring Compounds						
1) SA Tetrachlo...	4.380	3.604	34053324	46383539	21.916	20.920
2) SA Decachlor...	10.152	8.618	26703964	39234156	21.855	21.510

Target Compounds

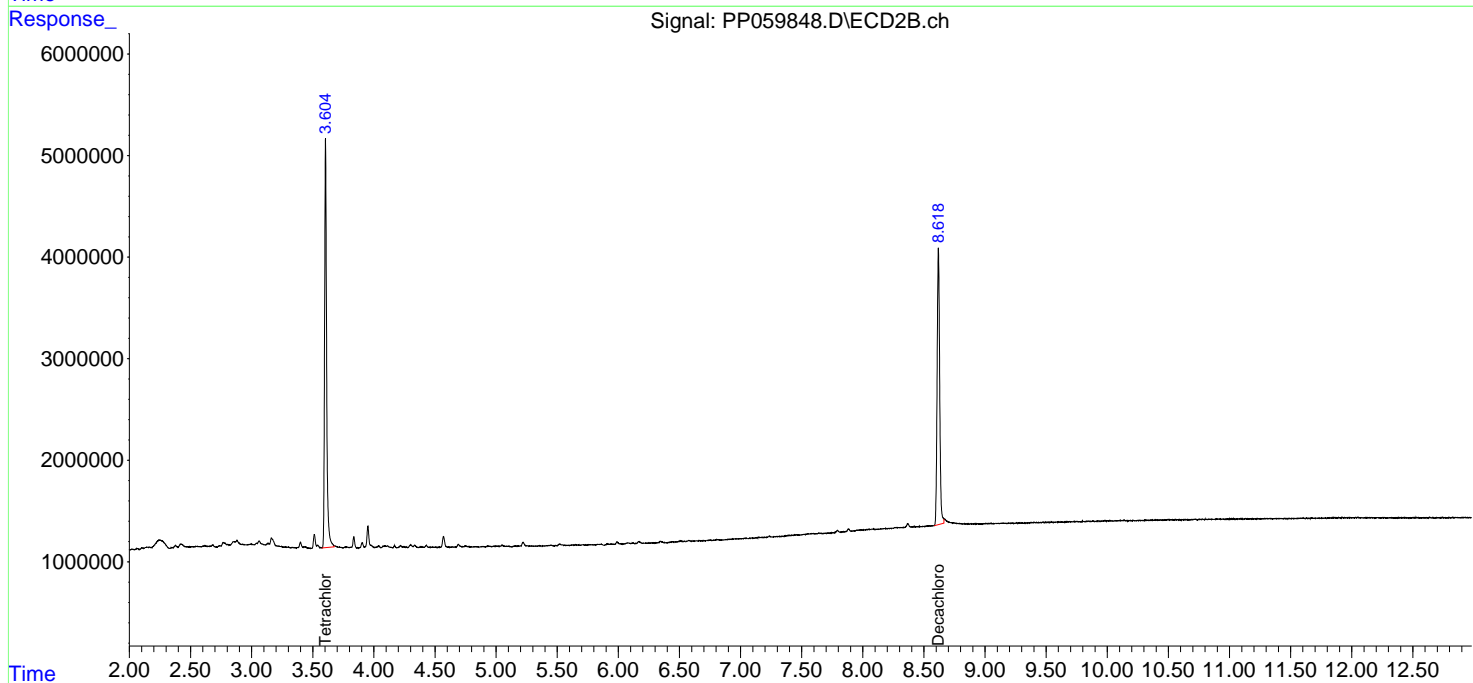
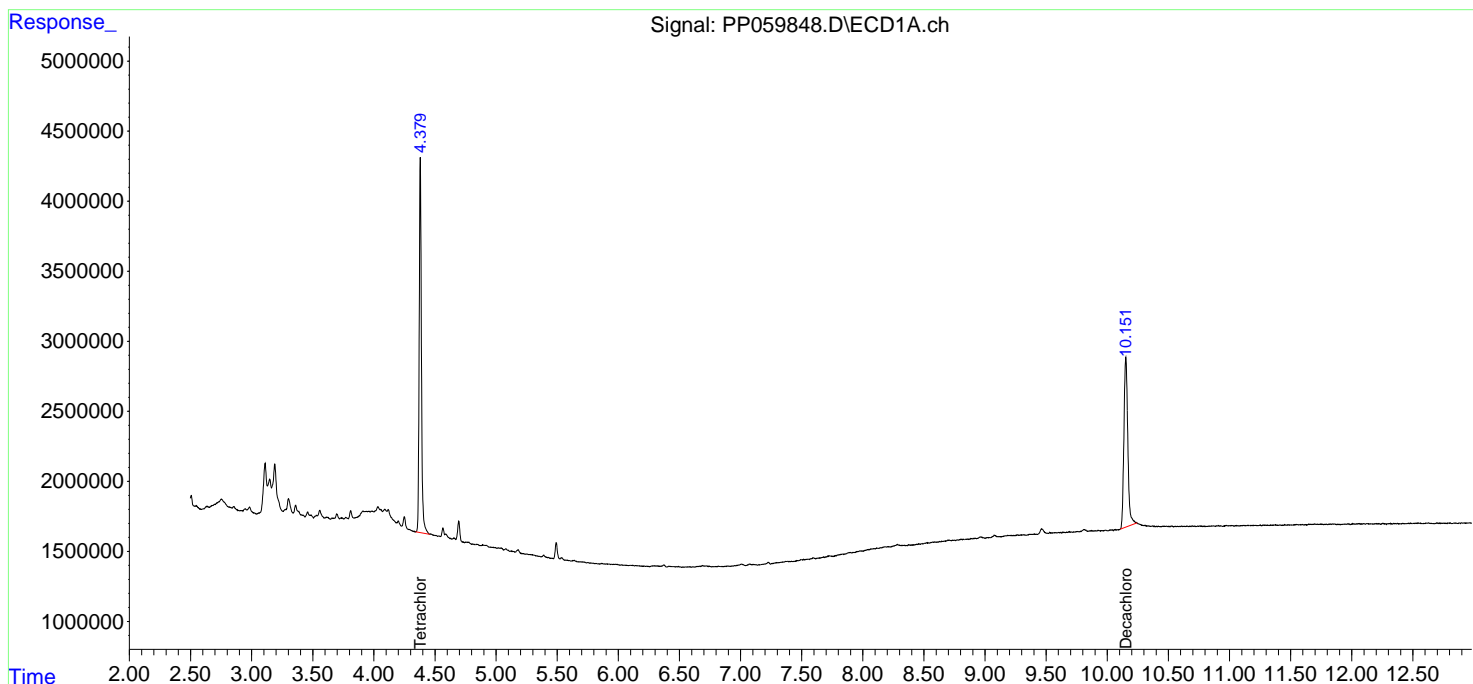
-----  
 (f)=RT Delta > 1/2 Window (#)=Amounts differ by > 25% (m)=manual int.

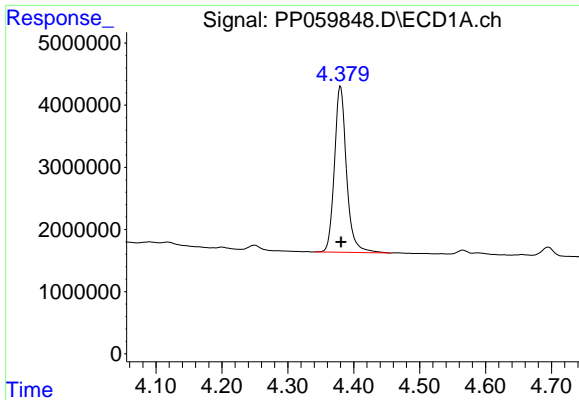
Data Path : Z:\pestpcbsrv\HPCHEM1\ECD\_P\Data\PP091123\  
 Data File : PP059848.D  
 Signal(s) : Signal #1: ECD1A.ch Signal #2: ECD2B.ch  
 Acq On : 12 Sep 2023 03:17  
 Operator : YP\AJ  
 Sample : PB155452BL  
 Misc :  
 ALS Vial : 38 Sample Multiplier: 1

Instrument :  
 ECD\_P  
 ClientSampleId :  
 PB155452BL

Integration File signal 1: autoint1.e  
 Integration File signal 2: autoint2.e  
 Quant Time: Sep 12 04:42:45 2023  
 Quant Method : Z:\pestpcbsrv\HPCHEM1\ECD\_P\methods\PP091123.M  
 Quant Title : GC EXTRACTABLES  
 QLast Update : Tue Sep 12 04:36:26 2023  
 Response via : Initial Calibration  
 Integrator: ChemStation

Volume Inj. : 2 µl  
 Signal #1 Phase : ZB-MR1 Signal #2 Phase: ZB-MR2  
 Signal #1 Info : 30Mx0.32mmx 0.50µ Signal #2 Info : 30M x 0.32mm x 0.25µm

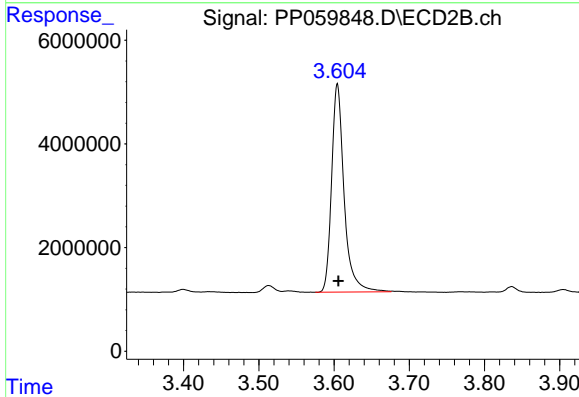




#1 Tetrachloro-m-xylene

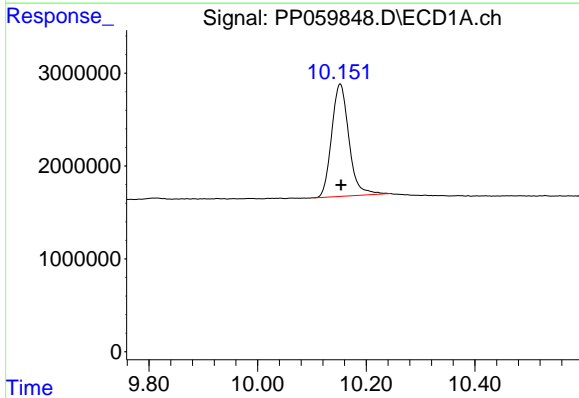
R.T.: 4.380 min  
 Delta R.T.: -0.001 min  
 Response: 34053324  
 Conc: 21.92 ng/ml

Instrument :  
 ECD\_P  
 ClientSampleId :  
 PB155452BL



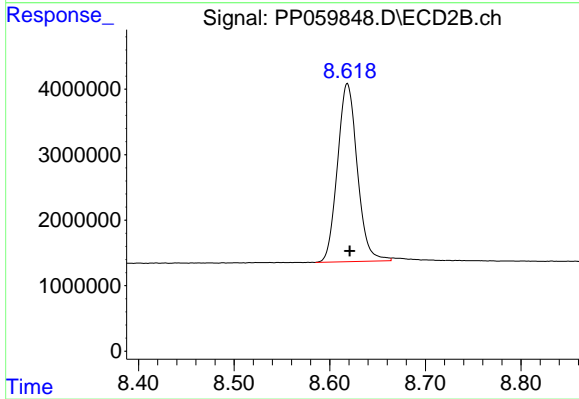
#1 Tetrachloro-m-xylene

R.T.: 3.604 min  
 Delta R.T.: -0.002 min  
 Response: 46383539  
 Conc: 20.92 ng/ml



#2 Decachlorobiphenyl

R.T.: 10.152 min  
 Delta R.T.: -0.001 min  
 Response: 26703964  
 Conc: 21.85 ng/ml



#2 Decachlorobiphenyl

R.T.: 8.618 min  
 Delta R.T.: -0.002 min  
 Response: 39234156  
 Conc: 21.51 ng/ml