

Data Path : Z:\pestpcbsrv\HPCHEM1\ECD\_P\Data\PP091223\  
 Data File : PP059872.D  
 Signal(s) : Signal #1: ECD1A.ch Signal #2: ECD2B.ch  
 Acq On : 12 Sep 2023 17:06  
 Operator : YP\AJ  
 Sample : PB155484BSD  
 Misc :  
 ALS Vial : 13 Sample Multiplier: 1

**Instrument :**  
 ECD\_P  
**ClientSampleId :**  
 PB155484BSD

Integration File signal 1: autoint1.e  
 Integration File signal 2: autoint2.e  
 Quant Time: Sep 13 02:54:59 2023  
 Quant Method : Z:\pestpcbsrv\HPCHEM1\ECD\_P\methods\PP091123.M  
 Quant Title : GC EXTRACTABLES  
 QLast Update : Tue Sep 12 04:36:26 2023  
 Response via : Initial Calibration  
 Integrator: ChemStation

Volume Inj. : 2 µl  
 Signal #1 Phase : ZB-MR1 Signal #2 Phase: ZB-MR2  
 Signal #1 Info : 30Mx0.32mmx 0.50µ Signal #2 Info : 30M x 0.32mm x 0.25µm

Compound	RT#1	RT#2	Resp#1	Resp#2	ng/ml	ng/ml
-----						
System Monitoring Compounds						
1) SA Tetrachlo...	4.381	3.605	34003248	40532612	21.884	18.281
2) SA Decachlor...	10.154	8.619	28026995	37168954	22.938	20.378
Target Compounds						
3) L1 AR-1016-1	5.558	4.692	22850919	31542291	456.223	439.230
4) L1 AR-1016-2	5.580	4.711	33196344	45912789	459.530	435.222
5) L1 AR-1016-3	5.642	4.885	20867670	24583235	457.803	439.836
6) L1 AR-1016-4	5.742	4.928	17197188	21110976	463.435	442.812
7) L1 AR-1016-5	6.038	5.141	16503929	25997227	458.608	433.136
31) L7 AR-1260-1	7.170	6.177	29281396	47935067	468.045	408.126
32) L7 AR-1260-2	7.428	6.369	33331508	56396469	477.043	408.150
33) L7 AR-1260-3	7.789	6.520	23739011	52965569	420.239	411.939
34) L7 AR-1260-4	8.015	6.993	27130576	38911317	429.221	366.610
35) L7 AR-1260-5	8.334	7.239	48658415	85348950	441.165	376.721

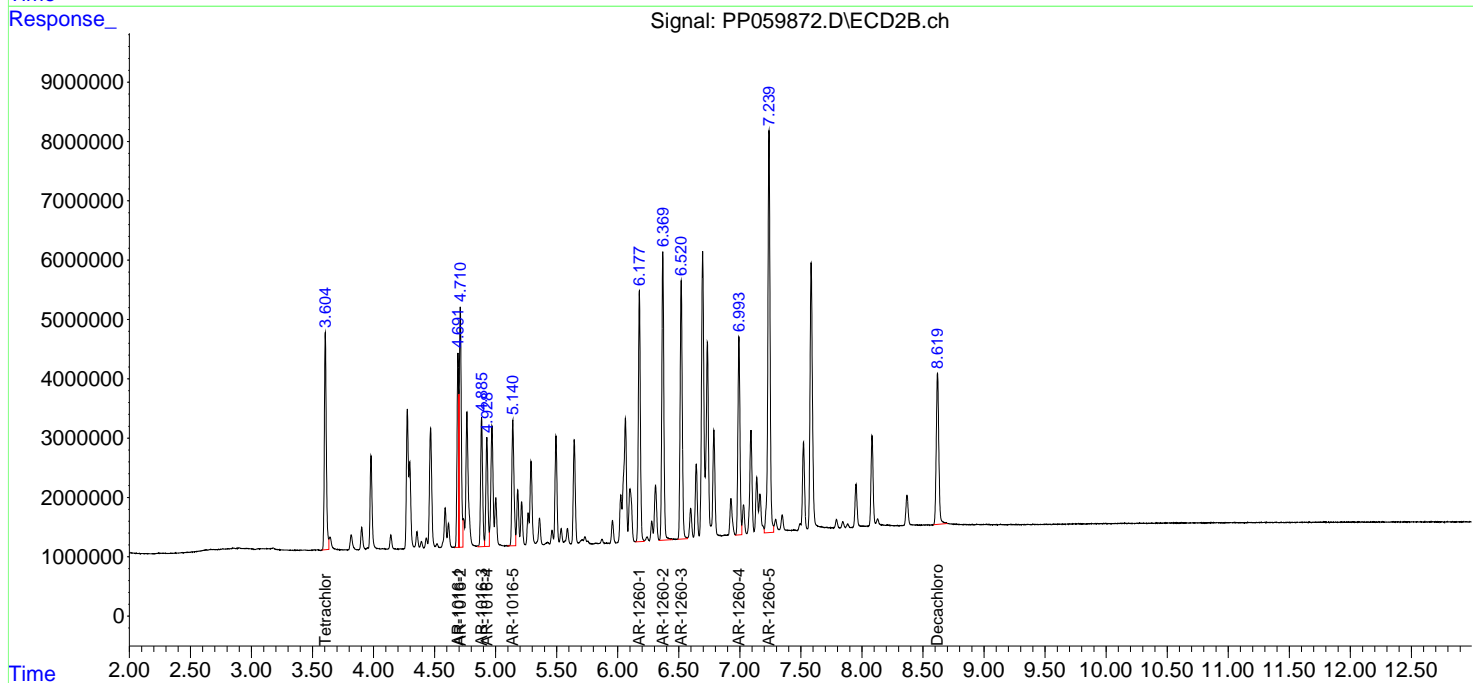
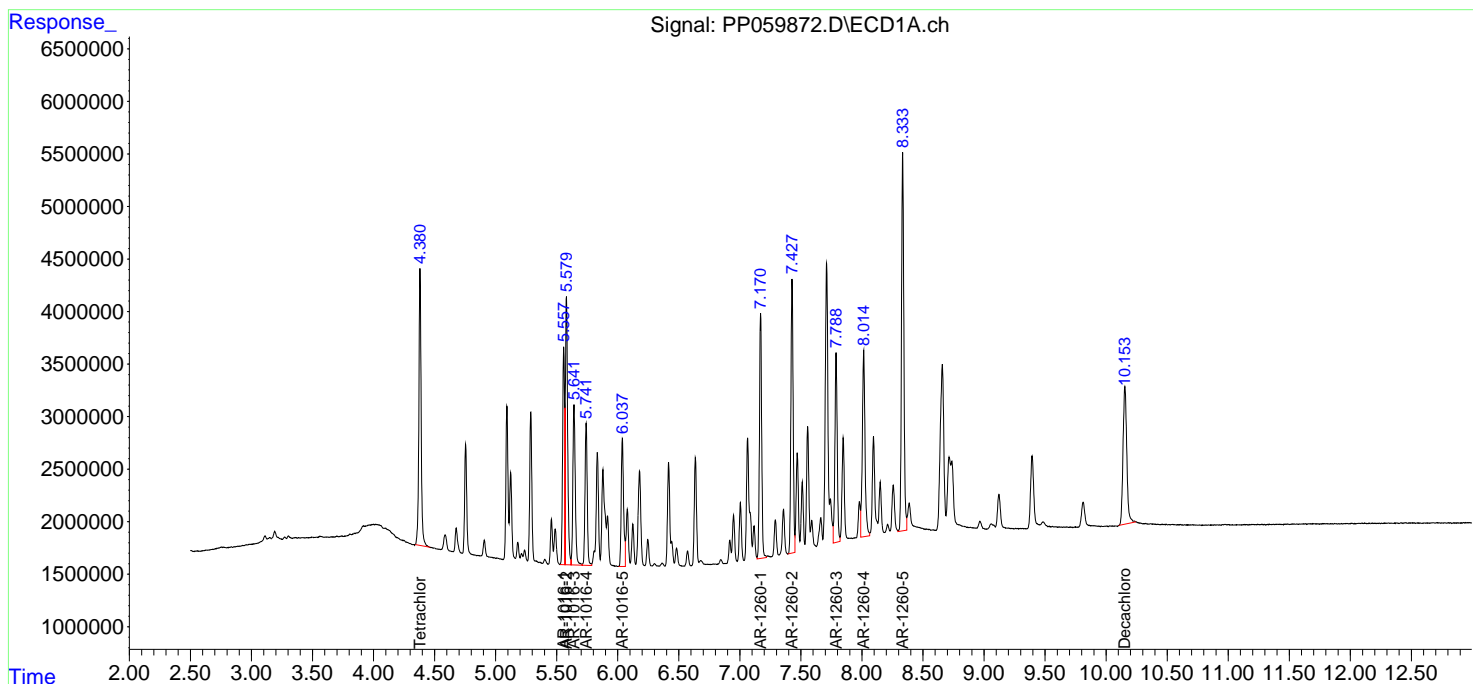
(f)=RT Delta > 1/2 Window (#)=Amounts differ by > 25% (m)=manual int.

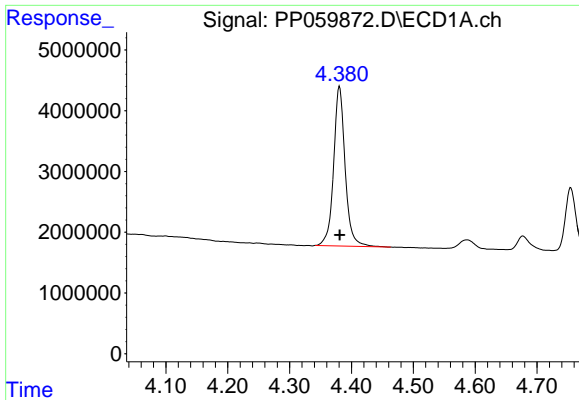
Data Path : Z:\pestpcbsrv\HPCHEM1\ECD\_P\Data\PP091223\  
 Data File : PP059872.D  
 Signal(s) : Signal #1: ECD1A.ch Signal #2: ECD2B.ch  
 Acq On : 12 Sep 2023 17:06  
 Operator : YP\AJ  
 Sample : PB155484BSD  
 Misc :  
 ALS Vial : 13 Sample Multiplier: 1

Instrument :  
 ECD\_P  
 ClientSampleId :  
 PB155484BSD

Integration File signal 1: autoint1.e  
 Integration File signal 2: autoint2.e  
 Quant Time: Sep 13 02:54:59 2023  
 Quant Method : Z:\pestpcbsrv\HPCHEM1\ECD\_P\methods\PP091123.M  
 Quant Title : GC EXTRACTABLES  
 QLast Update : Tue Sep 12 04:36:26 2023  
 Response via : Initial Calibration  
 Integrator: ChemStation

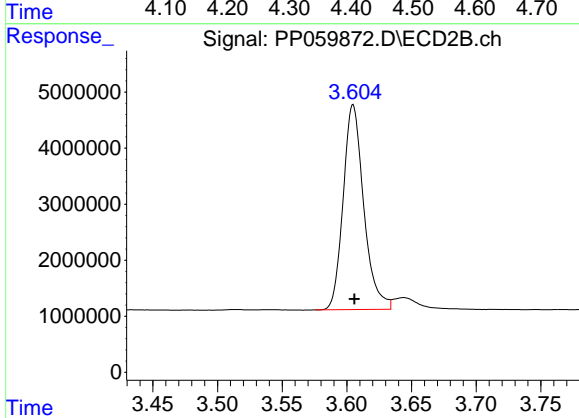
Volume Inj. : 2 µl  
 Signal #1 Phase : ZB-MR1 Signal #2 Phase: ZB-MR2  
 Signal #1 Info : 30Mx0.32mmx 0.50µ Signal #2 Info : 30M x 0.32mm x 0.25µm



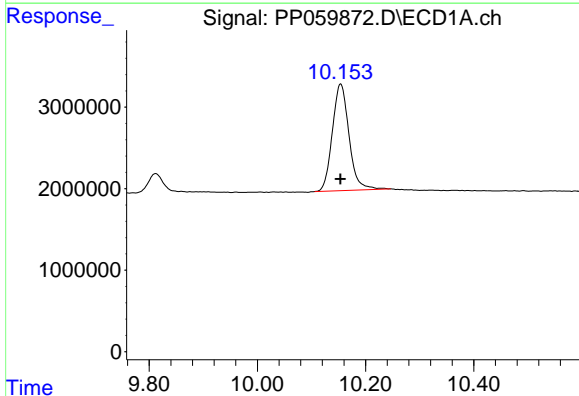


#1 Tetrachloro-m-xylene  
 R.T.: 4.381 min  
 Delta R.T.: 0.000 min  
 Response: 34003248  
 Conc: 21.88 ng/ml

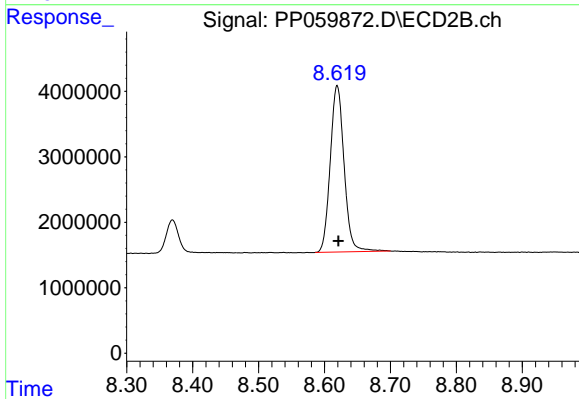
Instrument :  
 ECD\_P  
 ClientSampleId :  
 PB155484BSD



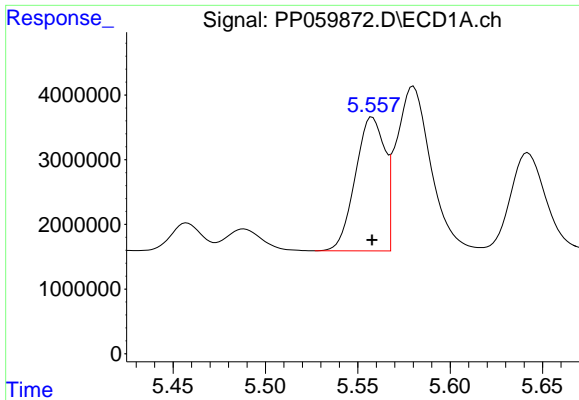
#1 Tetrachloro-m-xylene  
 R.T.: 3.605 min  
 Delta R.T.: -0.001 min  
 Response: 40532612  
 Conc: 18.28 ng/ml



#2 Decachlorobiphenyl  
 R.T.: 10.154 min  
 Delta R.T.: 0.000 min  
 Response: 28026995  
 Conc: 22.94 ng/ml



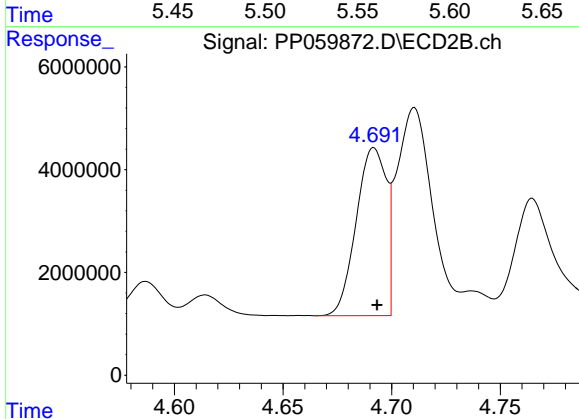
#2 Decachlorobiphenyl  
 R.T.: 8.619 min  
 Delta R.T.: -0.002 min  
 Response: 37168954  
 Conc: 20.38 ng/ml



#3 AR-1016-1

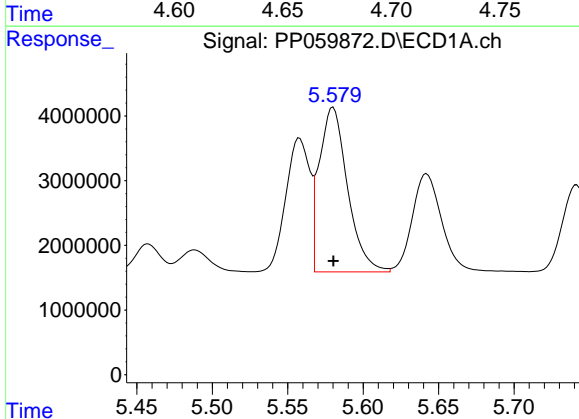
R.T.: 5.558 min  
 Delta R.T.: 0.000 min  
 Response: 22850919  
 Conc: 456.22 ng/ml

Instrument :  
 ECD\_P  
 ClientSampleId :  
 PB155484BSD



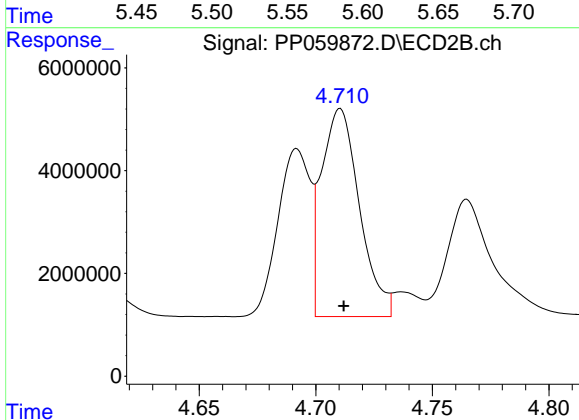
#3 AR-1016-1

R.T.: 4.692 min  
 Delta R.T.: -0.001 min  
 Response: 31542291  
 Conc: 439.23 ng/ml



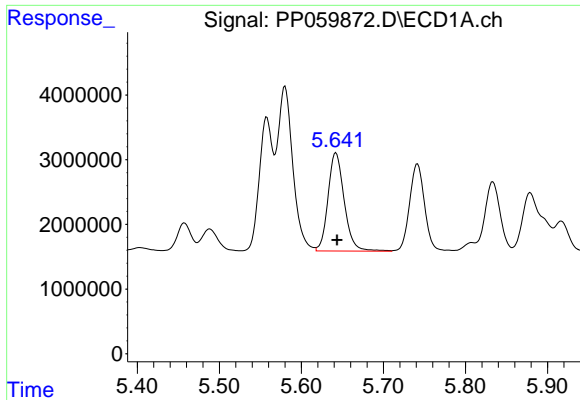
#4 AR-1016-2

R.T.: 5.580 min  
 Delta R.T.: 0.000 min  
 Response: 33196344  
 Conc: 459.53 ng/ml



#4 AR-1016-2

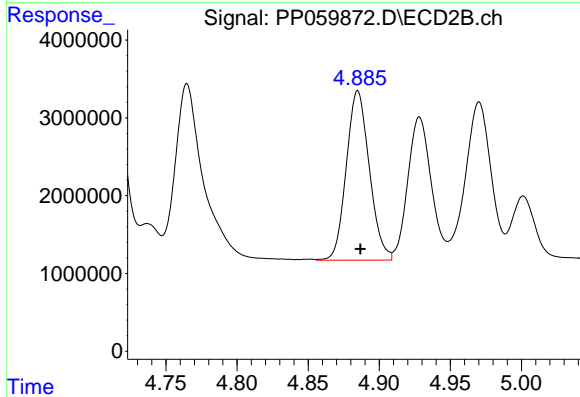
R.T.: 4.711 min  
 Delta R.T.: -0.001 min  
 Response: 45912789  
 Conc: 435.22 ng/ml



#5 AR-1016-3

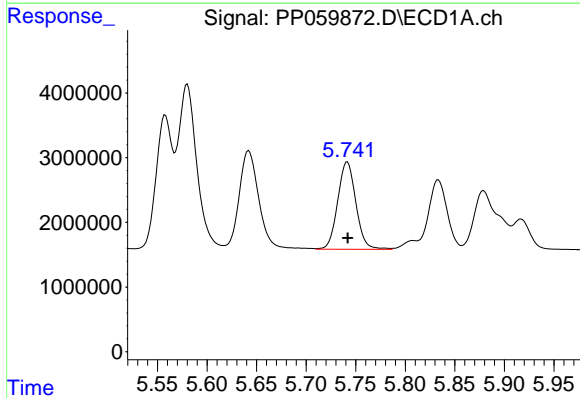
R.T.: 5.642 min  
 Delta R.T.: -0.001 min  
 Response: 20867670  
 Conc: 457.80 ng/ml

Instrument :  
 ECD\_P  
 ClientSampleId :  
 PB155484BSD



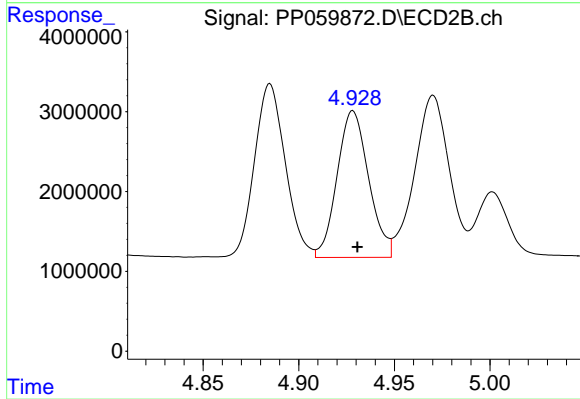
#5 AR-1016-3

R.T.: 4.885 min  
 Delta R.T.: -0.002 min  
 Response: 24583235  
 Conc: 439.84 ng/ml



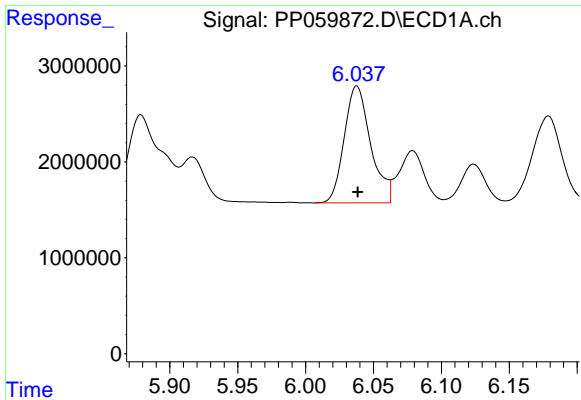
#6 AR-1016-4

R.T.: 5.742 min  
 Delta R.T.: 0.000 min  
 Response: 17197188  
 Conc: 463.44 ng/ml



#6 AR-1016-4

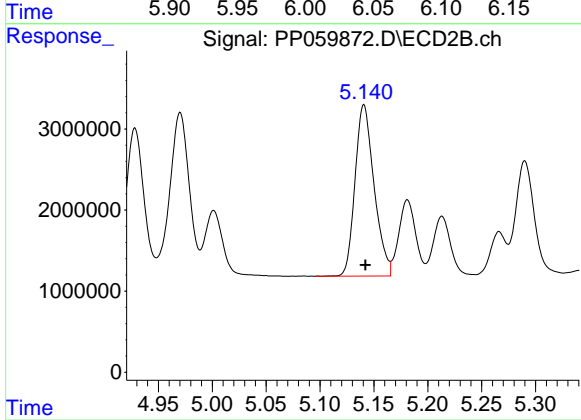
R.T.: 4.928 min  
 Delta R.T.: -0.002 min  
 Response: 21110976  
 Conc: 442.81 ng/ml



#7 AR-1016-5

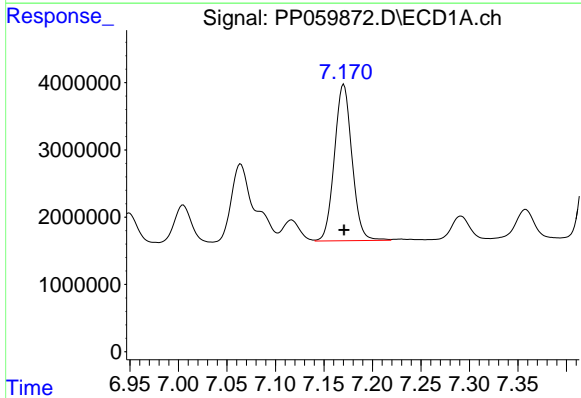
R.T.: 6.038 min  
 Delta R.T.: 0.000 min  
 Response: 16503929  
 Conc: 458.61 ng/ml

Instrument :  
 ECD\_P  
 ClientSampleId :  
 PB155484BSD



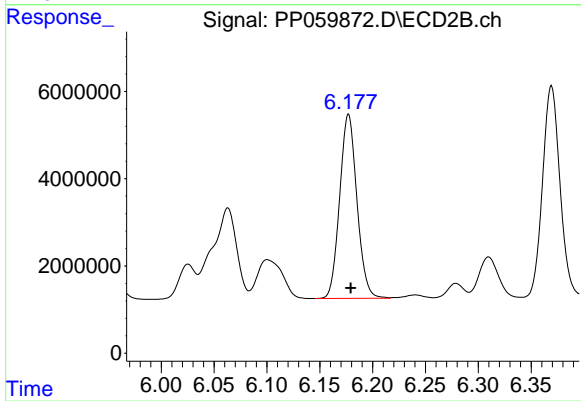
#7 AR-1016-5

R.T.: 5.141 min  
 Delta R.T.: -0.001 min  
 Response: 25997227  
 Conc: 433.14 ng/ml



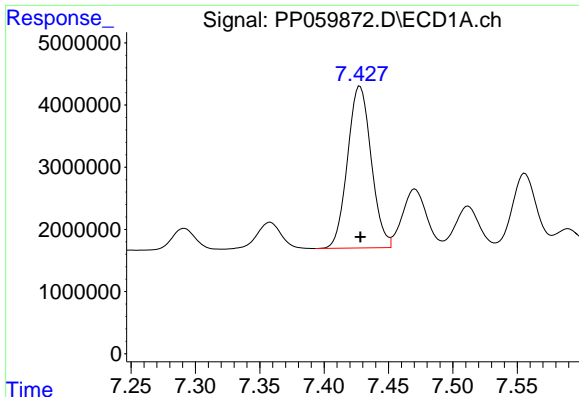
#31 AR-1260-1

R.T.: 7.170 min  
 Delta R.T.: 0.000 min  
 Response: 29281396  
 Conc: 468.04 ng/ml



#31 AR-1260-1

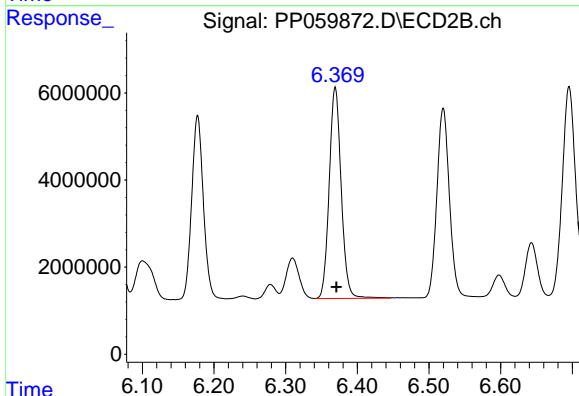
R.T.: 6.177 min  
 Delta R.T.: -0.002 min  
 Response: 47935067  
 Conc: 408.13 ng/ml



#32 AR-1260-2

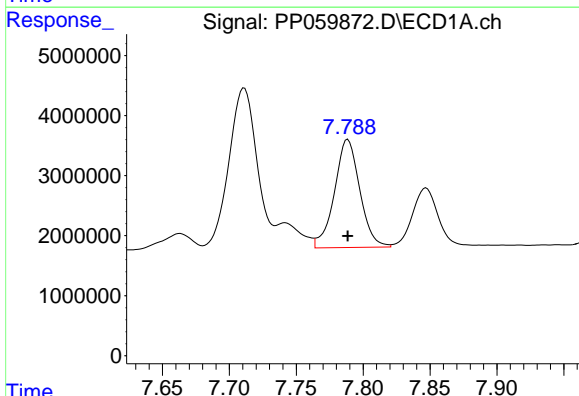
R.T.: 7.428 min  
 Delta R.T.: 0.000 min  
 Response: 33331508  
 Conc: 477.04 ng/ml

Instrument :  
 ECD\_P  
 ClientSampleId :  
 PB155484BSD



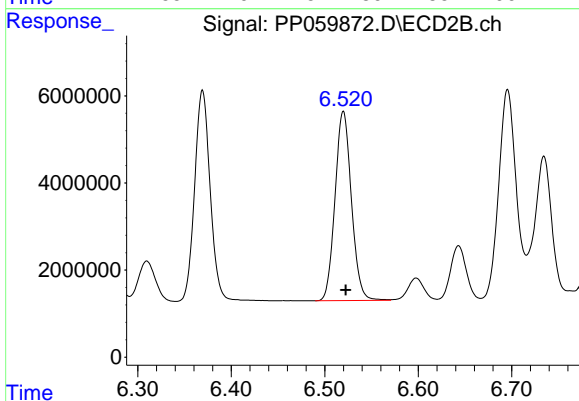
#32 AR-1260-2

R.T.: 6.369 min  
 Delta R.T.: -0.001 min  
 Response: 56396469  
 Conc: 408.15 ng/ml



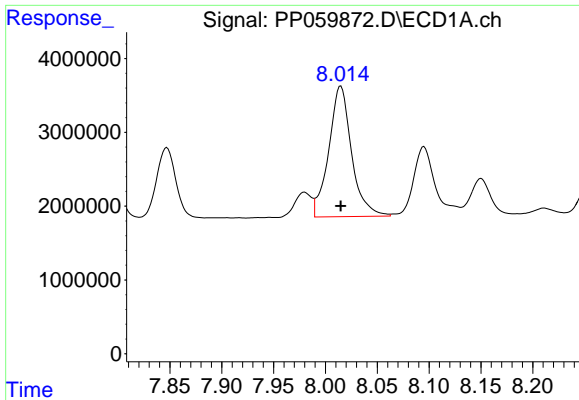
#33 AR-1260-3

R.T.: 7.789 min  
 Delta R.T.: 0.000 min  
 Response: 23739011  
 Conc: 420.24 ng/ml



#33 AR-1260-3

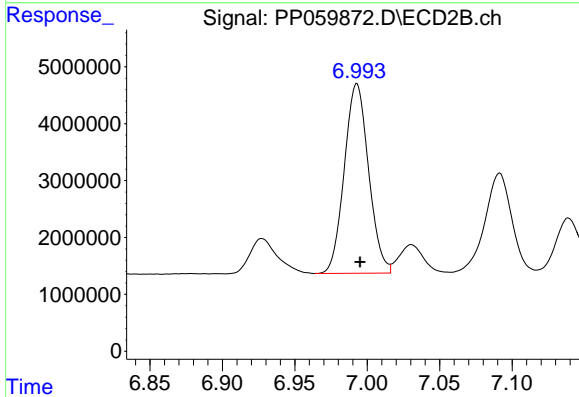
R.T.: 6.520 min  
 Delta R.T.: -0.002 min  
 Response: 52965569  
 Conc: 411.94 ng/ml



#34 AR-1260-4

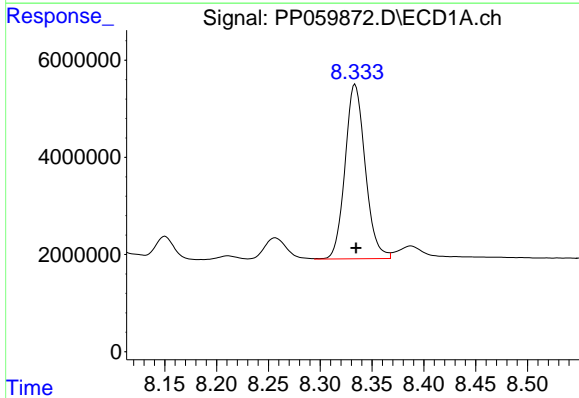
R.T.: 8.015 min  
 Delta R.T.: 0.000 min  
 Response: 27130576  
 Conc: 429.22 ng/ml

Instrument :  
 ECD\_P  
 ClientSampleId :  
 PB155484BSD



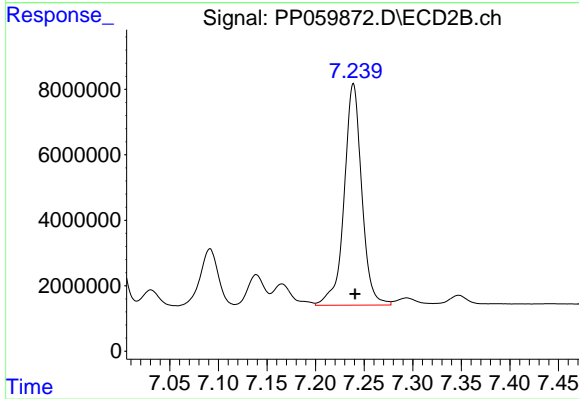
#34 AR-1260-4

R.T.: 6.993 min  
 Delta R.T.: -0.002 min  
 Response: 38911317  
 Conc: 366.61 ng/ml



#35 AR-1260-5

R.T.: 8.334 min  
 Delta R.T.: -0.001 min  
 Response: 48658415  
 Conc: 441.17 ng/ml



#35 AR-1260-5

R.T.: 7.239 min  
 Delta R.T.: -0.002 min  
 Response: 85348950  
 Conc: 376.72 ng/ml