

Data Path : Z:\pestpcbsrv\HPCHEM1\ECD_P\Data\PP091522\
 Data File : PP051358.D
 Signal(s) : Signal #1: ECD1A.ch Signal #2: ECD2B.ch
 Acq On : 15 Sep 2022 11:53
 Operator : YP\AJ
 Sample : N4603-02 10X
 Misc :
 ALS Vial : 13 Sample Multiplier: 1

Instrument :
 ECD_P
ClientSampleId :
 SOM-2022-70B

Integration File signal 1: autoint1.e
 Integration File signal 2: autoint2.e
 Quant Time: Sep 15 14:48:52 2022
 Quant Method : Z:\pestpcbsrv\HPCHEM1\ECD_P\methods\PP091222.M
 Quant Title : GC EXTRACTABLES
 QLast Update : Tue Sep 13 14:37:12 2022
 Response via : Initial Calibration
 Integrator: ChemStation

Volume Inj. : 2 µl
 Signal #1 Phase : ZB-MR1 Signal #2 Phase: ZB-MR2
 Signal #1 Info : 30Mx0.32mmx 0.50µ Signal #2 Info : 30M x 0.32mm x 0.25µm

Compound	RT#1	RT#2	Resp#1	Resp#2	ng/ml	ng/ml

System Monitoring Compounds						
1) SA Tetrachlo...	4.455	3.700	2229148	1526804	1.425	1.306
2) SA Decachlor...	10.303	8.807	2656648	1773860	2.528	2.034

Target Compounds

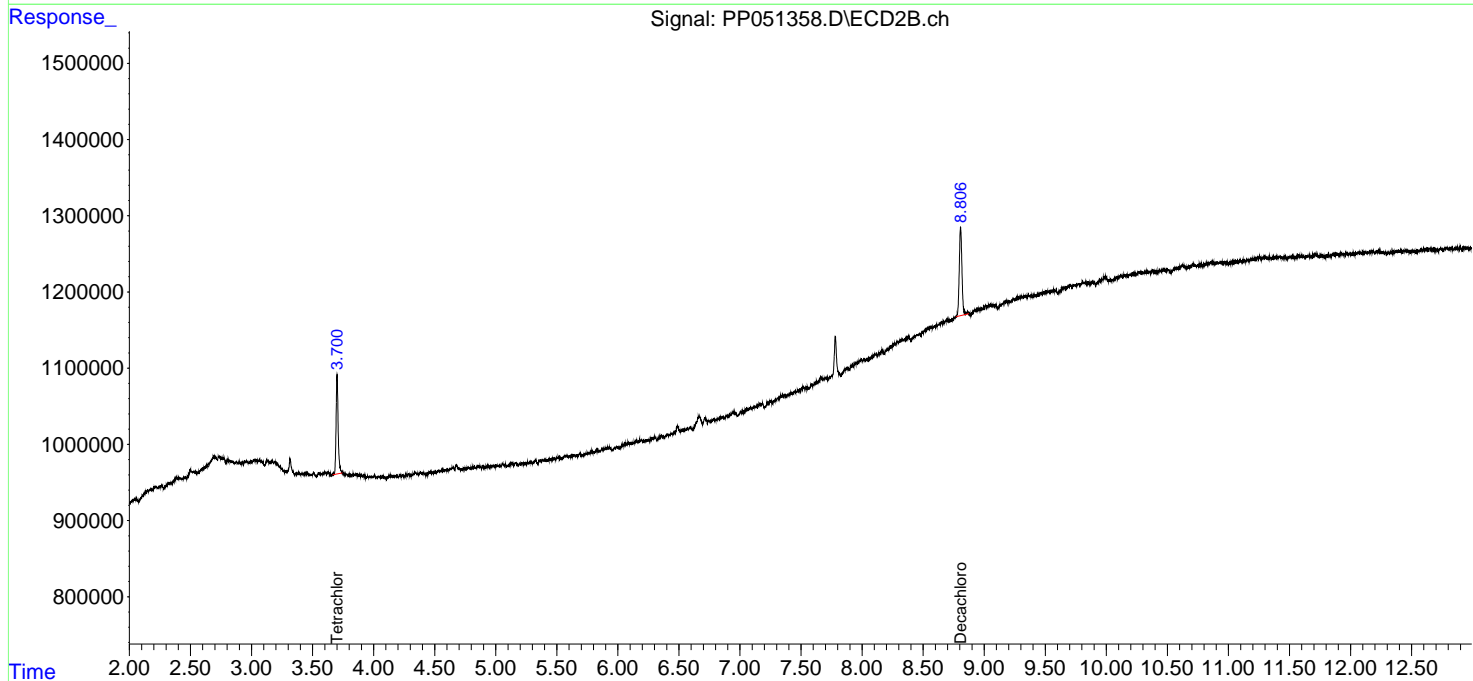
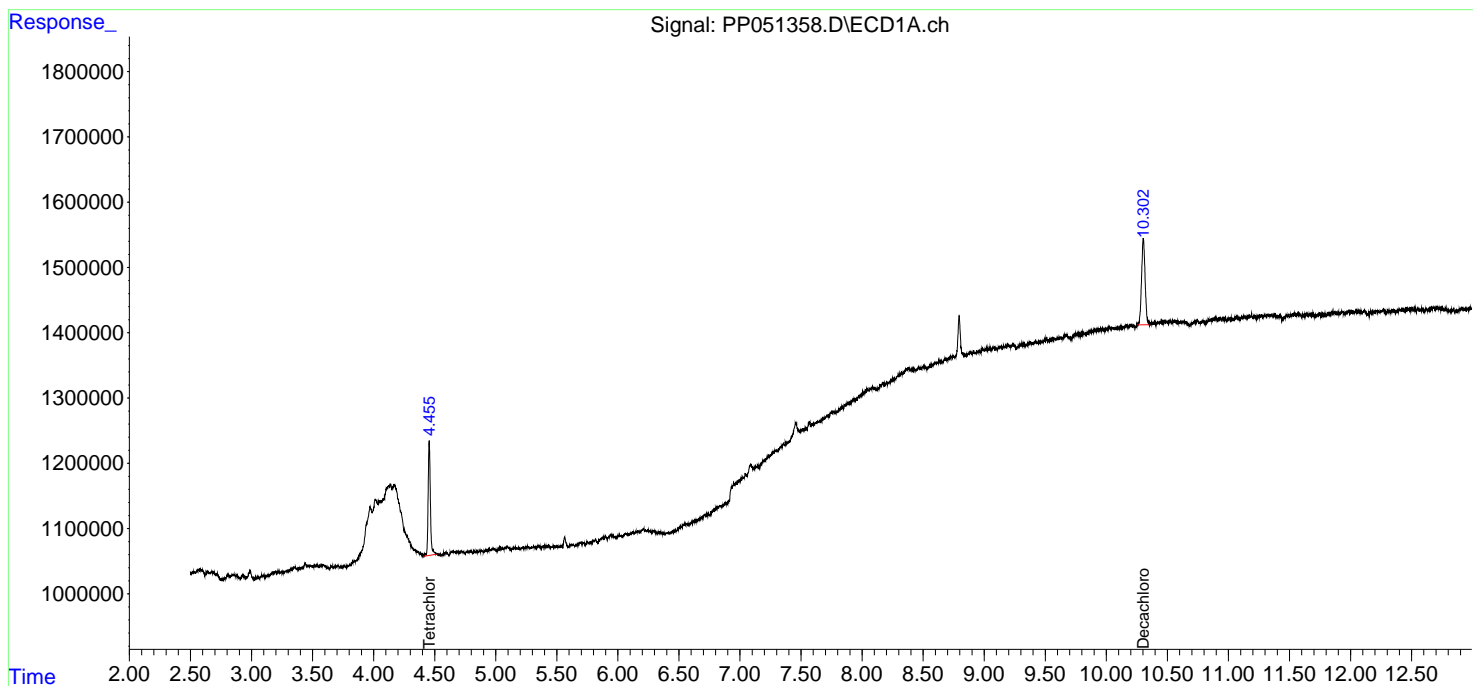
 (f)=RT Delta > 1/2 Window (#)=Amounts differ by > 25% (m)=manual int.

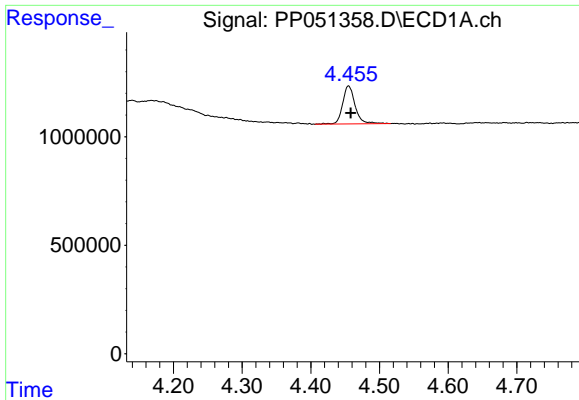
Data Path : Z:\pestpcbsrv\HPCHEM1\ECD_P\Data\PP091522\
 Data File : PP051358.D
 Signal(s) : Signal #1: ECD1A.ch Signal #2: ECD2B.ch
 Acq On : 15 Sep 2022 11:53
 Operator : YP\AJ
 Sample : N4603-02 10X
 Misc :
 ALS Vial : 13 Sample Multiplier: 1

Instrument :
 ECD_P
 ClientSampleId :
 SOM-2022-70B

Integration File signal 1: autoint1.e
 Integration File signal 2: autoint2.e
 Quant Time: Sep 15 14:48:52 2022
 Quant Method : Z:\pestpcbsrv\HPCHEM1\ECD_P\methods\PP091222.M
 Quant Title : GC EXTRACTABLES
 QLast Update : Tue Sep 13 14:37:12 2022
 Response via : Initial Calibration
 Integrator: ChemStation

Volume Inj. : 2 µl
 Signal #1 Phase : ZB-MR1 Signal #2 Phase: ZB-MR2
 Signal #1 Info : 30Mx0.32mmx 0.50µ Signal #2 Info : 30M x 0.32mm x 0.25µm

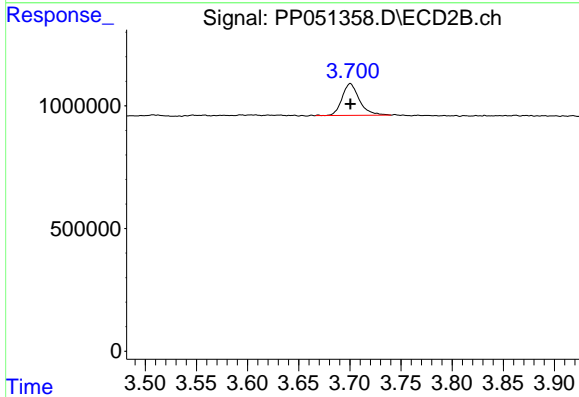




#1 Tetrachloro-m-xylene

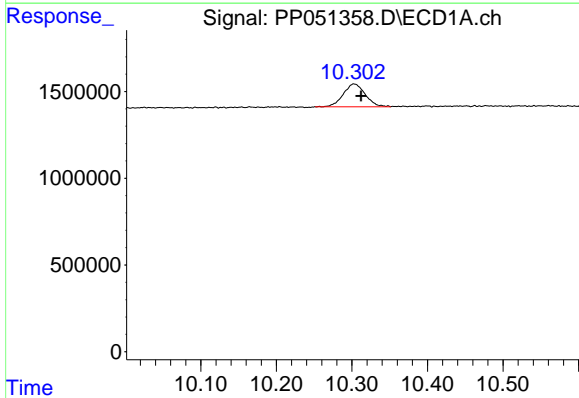
R.T.: 4.455 min
 Delta R.T.: -0.003 min
 Response: 2229148
 Conc: 1.42 ng/ml

Instrument :
 ECD_P
 ClientSampleId :
 SOM-2022-70B



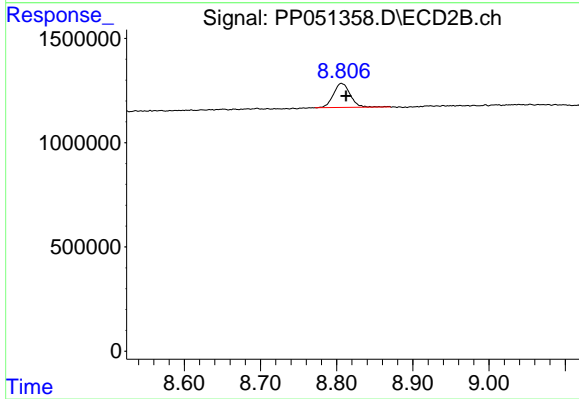
#1 Tetrachloro-m-xylene

R.T.: 3.700 min
 Delta R.T.: 0.000 min
 Response: 1526804
 Conc: 1.31 ng/ml



#2 Decachlorobiphenyl

R.T.: 10.303 min
 Delta R.T.: -0.009 min
 Response: 2656648
 Conc: 2.53 ng/ml



#2 Decachlorobiphenyl

R.T.: 8.807 min
 Delta R.T.: -0.006 min
 Response: 1773860
 Conc: 2.03 ng/ml