

Data Path : Z:\pestpcbsrv\HPCHEM1\ECD P\Data\PP091718\
 Data File : PP027374.D
 Signal(s) : Signal #1: ECD1A.CH Signal #2: ECD2B.CH
 Acq On : 17 Sep 2018 18:52
 Operator : EI\MA
 Sample : J4773-06
 Misc :
 ALS Vial : 11 Sample Multiplier: 1

Integration File signal 1: autoint1.e
 Integration File signal 2: autoint2.e
 Quant Time: Sep 18 05:14:24 2018
 Quant Method : Z:\pestpcbsrv\HPCHEM1\ECD_P\methods\PP082918.M
 Quant Title : 8080.M
 QLast Update : Thu Aug 30 07:11:19 2018
 Response via : Initial Calibration
 Integrator: ChemStation 6890 Scale Mode: Large solvent peaks clipped

Volume Inj. : 2 µl
 Signal #1 Phase : ZB-CLPesticides-1 Signal #2 Phase: ZB-CLPesticides-2
 Signal #1 Info : 30M x 0.32mm x0.5 Signal #2 Info : 30M x 0.32mm x 0.25µm

Compound	RT#1	RT#2	Resp#1	Resp#2	nq/ml	nq/ml
----------	------	------	--------	--------	-------	-------

 System Monitoring Compounds

4) S	2,4-DCAA	12.042	12.156	140.3E6	165.7E6	565.339m	366.408 #
------	----------	--------	--------	---------	---------	----------	-----------

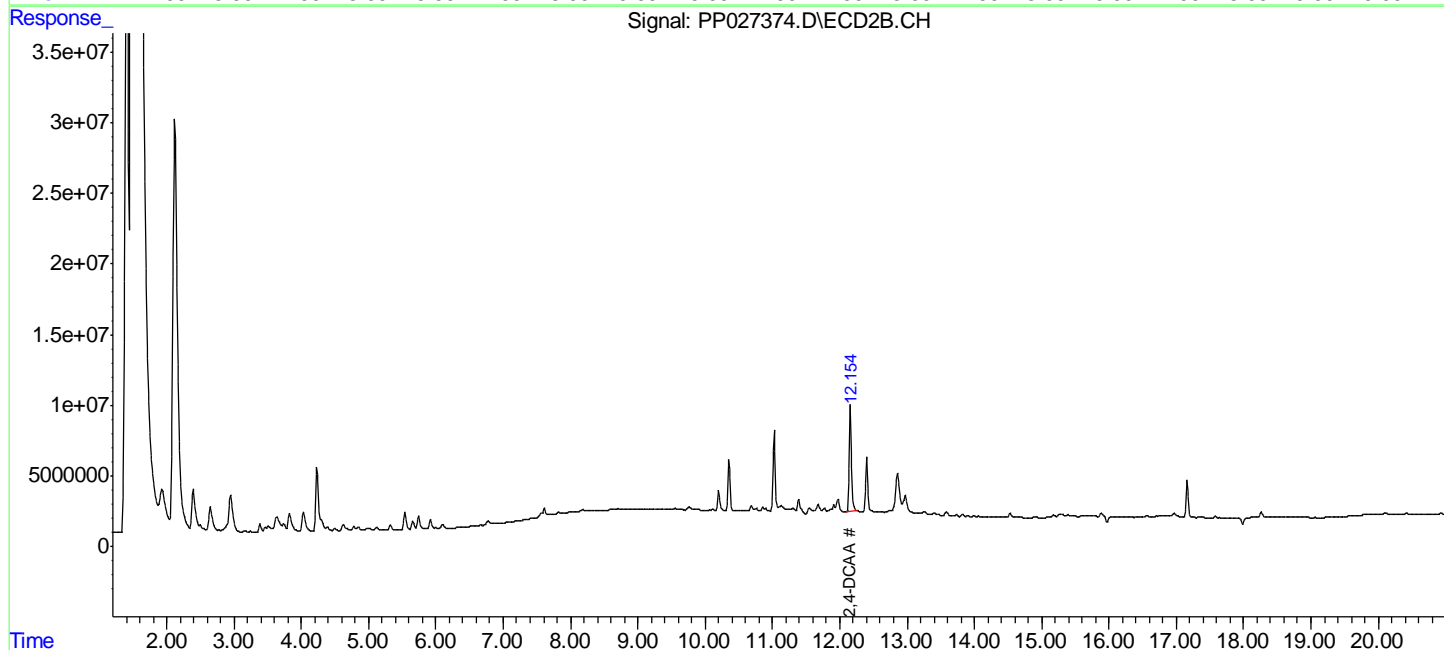
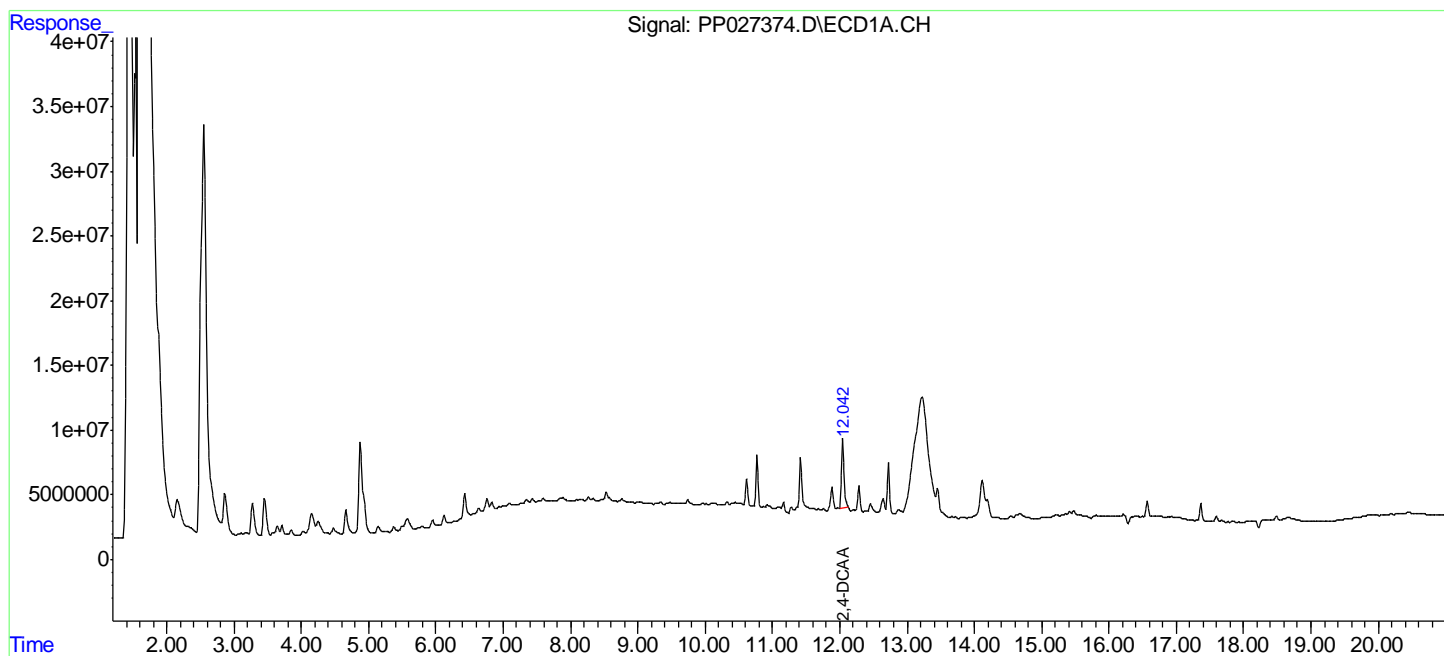
Target Compounds

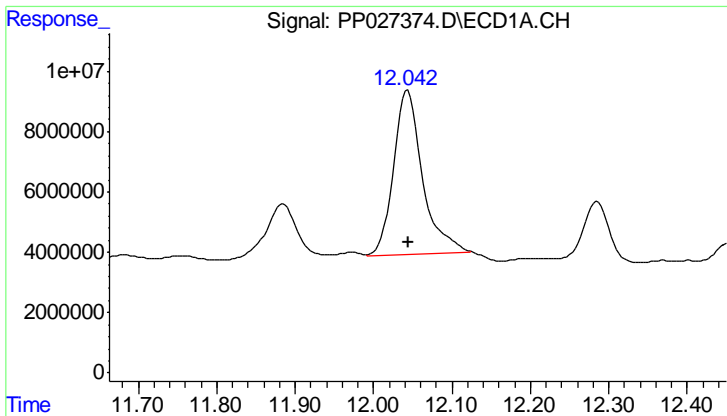
(f)=RT Delta > 1/2 Window (#)=Amounts differ by > 25% (m)=manual int.

Data Path : Z:\pestpcbsrv\HPCHEM1\ECD P\Data\PP091718\
 Data File : PP027374.D
 Signal(s) : Signal #1: ECD1A.CH Signal #2: ECD2B.CH
 Acq On : 17 Sep 2018 18:52
 Operator : EI\MA
 Sample : J4773-06
 Misc :
 ALS Vial : 11 Sample Multiplier: 1

Integration File signal 1: autoint1.e
 Integration File signal 2: autoint2.e
 Quant Time: Sep 18 05:14:24 2018
 Quant Method : Z:\pestpcbsrv\HPCHEM1\ECD_P\methods\PP082918.M
 Quant Title : 8080.M
 QLast Update : Thu Aug 30 07:11:19 2018
 Response via : Initial Calibration
 Integrator: ChemStation 6890 Scale Mode: Large solvent peaks clipped

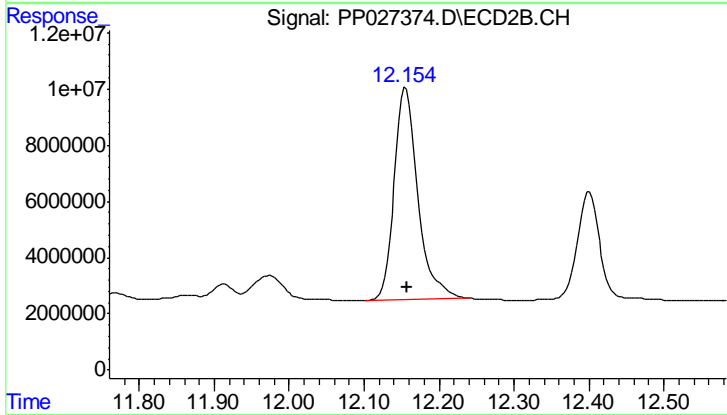
Volume Inj. : 2 ul
 Signal #1 Phase : ZB-CLPesticides-1 Signal #2 Phase: ZB-CLPesticides-2
 Signal #1 Info : 30M x 0.32mm x0.5 Signal #2 Info : 30M x 0.32mm x 0.25µm





#4 2,4-DCAA

R.T.: 12.042 min
Delta R.T.: -0.003 min
Response: 140289632
Conc: 565.34 ng/ml m



#4 2,4-DCAA

R.T.: 12.156 min
Delta R.T.: -0.001 min
Response: 165693202
Conc: 366.41 ng/ml