

Data Path : Z:\pestpcbsrv\HPCHEM1\ECD P\Data\PP091718\  
 Data File : PP027378.D  
 Signal(s) : Signal #1: ECD1A.CH Signal #2: ECD2B.CH  
 Acq On : 17 Sep 2018 20:34  
 Operator : EI\MA  
 Sample : HSTDCCC750  
 Misc :  
 ALS Vial : 3 Sample Multiplier: 1

Integration File signal 1: autoint1.e  
 Integration File signal 2: autoint2.e  
 Quant Time: Sep 18 01:50:58 2018  
 Quant Method : Z:\pestpcbsrv\HPCHEM1\ECD\_P\methods\PP082918.M  
 Quant Title : 8080.M  
 QLast Update : Thu Aug 30 07:11:19 2018  
 Response via : Initial Calibration  
 Integrator: ChemStation 6890 Scale Mode: Large solvent peaks clipped

Volume Inj. : 2 ul  
 Signal #1 Phase : ZB-CLPesticides-1 Signal #2 Phase: ZB-CLPesticides-2  
 Signal #1 Info : 30M x 0.32mm x0.5 Signal #2 Info : 30M x 0.32mm x 0.25µm

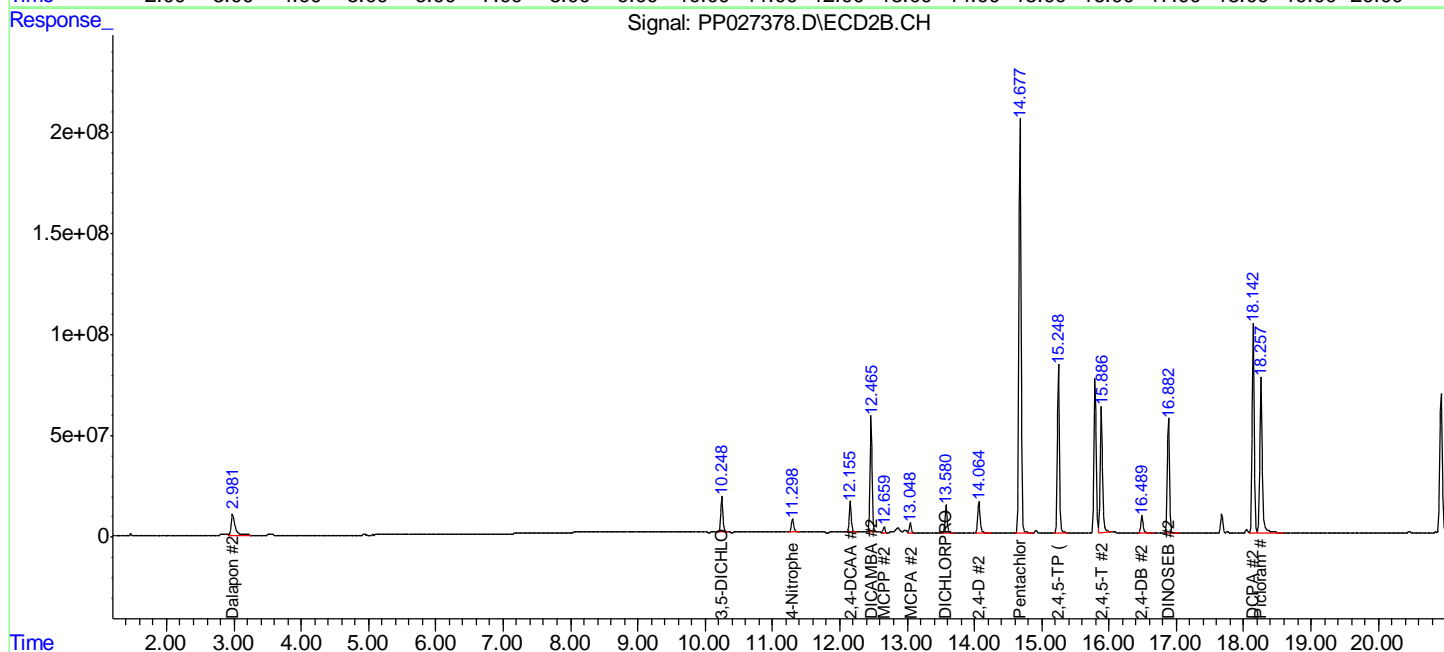
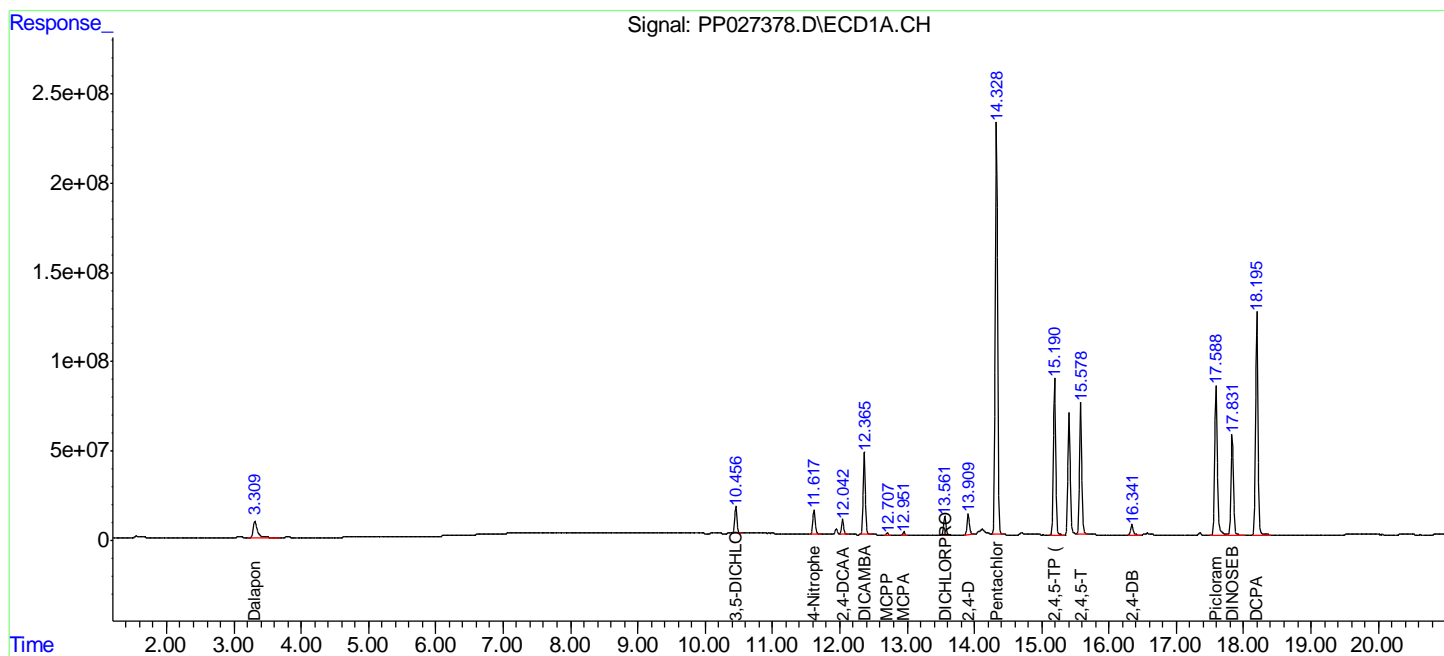
Compound	RT#1	RT#2	Resp#1	Resp#2	ng/ml	ng/ml
-----						
System Monitoring Compounds						
4) S 2,4-DCAA	12.044	12.156	187.1E6	326.7E6	753.970	722.359
Target Compounds						
1) T Dalapon	3.311	2.982	399.4E6	385.0E6	652.043	642.855
2) T 3,5-DICHL...	10.458	10.249	338.3E6	370.4E6	723.807	671.098
3) T 4-Nitroph...	11.618	11.299	329.6E6	156.7E6	778.792	678.142
5) T DICAMBA	12.366	12.467	1058.0E6	1168.1E6	686.530	676.245
6) T MCPP	12.708	12.660	30908718	61047380	71.648	74.374
7) T MCPA	12.952	13.049	47469231	95132922	66.048	72.814
8) T DICHLORPROP	13.563	13.582	236.0E6	292.6E6	726.287	685.917
9) T 2,4-D	13.910	14.066	272.5E6	384.2E6	727.629	704.688
10) T Pentachlo...	14.329	14.678	5615.2E6	4672.8E6	697.436	677.580
11) T 2,4,5-TP ...	15.192	15.249	2043.0E6	1816.0E6	700.187	697.707
12) T 2,4,5-T	15.580	15.887	1748.0E6	1482.7E6	713.290	720.666
13) T 2,4-DB	16.342	16.490	152.4E6	195.2E6	786.487	746.676
14) T DINOSEB	17.832	16.883	1398.4E6	1234.4E6	680.396	672.930
15) T Picloram	17.589	18.258	2291.4E6	2003.9E6	705.133	723.994
16) T DCPA	18.196	18.143	3050.5E6	2319.5E6	721.941	697.408
-----						

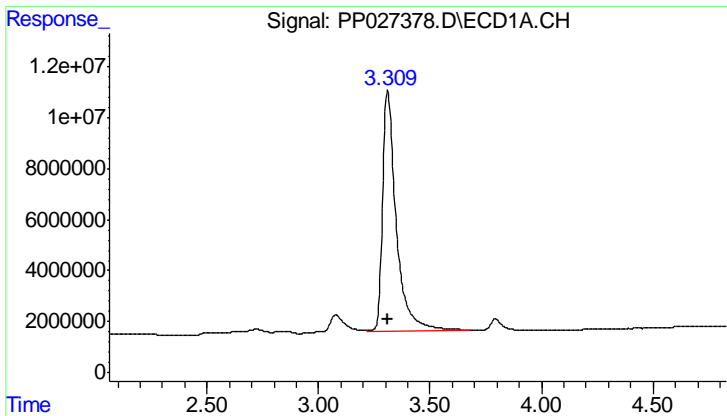
(f)=RT Delta > 1/2 Window (#)=Amounts differ by > 25% (m)=manual int.

Data Path : Z:\pestpcbsrv\HPCHEM1\ECD P\Data\PP091718\  
 Data File : PP027378.D  
 Signal(s) : Signal #1: ECD1A.CH Signal #2: ECD2B.CH  
 Acq On : 17 Sep 2018 20:34  
 Operator : EI\MA  
 Sample : HSTDCCC750  
 Misc :  
 ALS Vial : 3 Sample Multiplier: 1

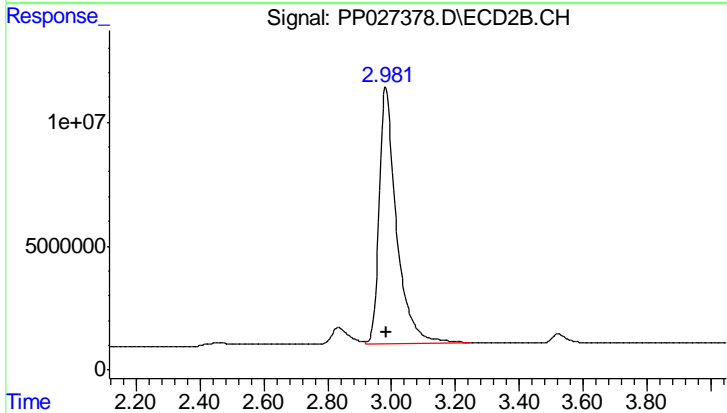
Integration File signal 1: autoint1.e  
 Integration File signal 2: autoint2.e  
 Quant Time: Sep 18 01:50:58 2018  
 Quant Method : Z:\pestpcbsrv\HPCHEM1\ECD\_P\methods\PP082918.M  
 Quant Title : 8080.M  
 QLast Update : Thu Aug 30 07:11:19 2018  
 Response via : Initial Calibration  
 Integrator: ChemStation 6890 Scale Mode: Large solvent peaks clipped

Volume Inj. : 2 µl  
 Signal #1 Phase : ZB-CLPesticides-1 Signal #2 Phase: ZB-CLPesticides-2  
 Signal #1 Info : 30M x 0.32mm x0.5 Signal #2 Info : 30M x 0.32mm x 0.25µm

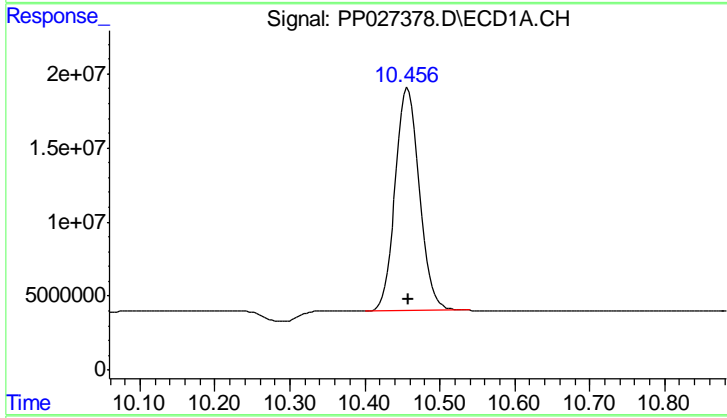




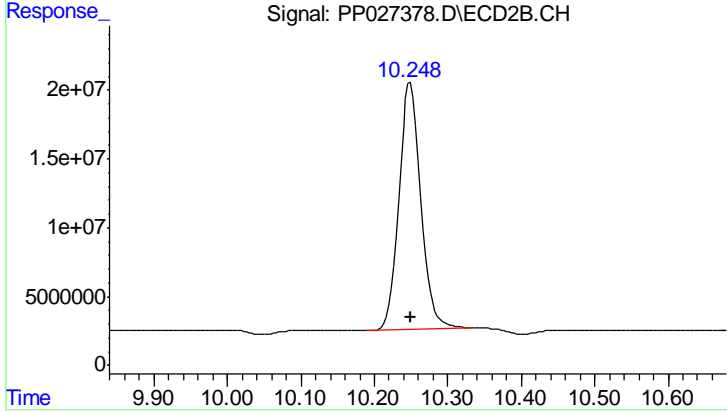
#1 Dalapon  
R.T.: 3.311 min  
Delta R.T.: 0.000 min  
Response: 399388689  
Conc: 652.04 ng/ml



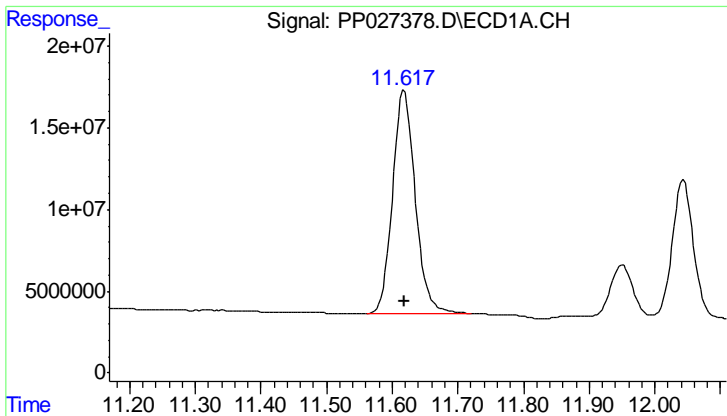
#1 Dalapon  
R.T.: 2.982 min  
Delta R.T.: 0.000 min  
Response: 385031481  
Conc: 642.85 ng/ml



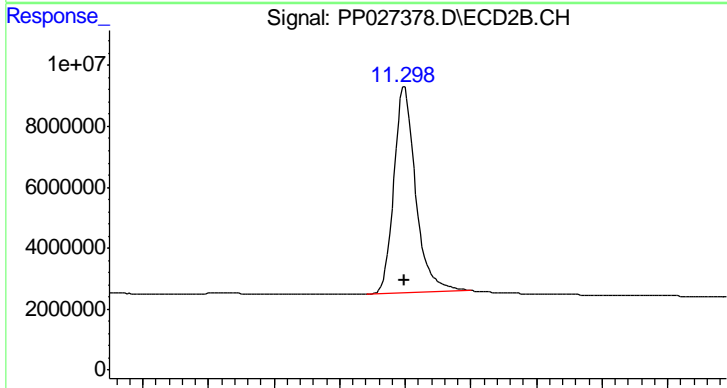
#2 3,5-DICHLOROBENZOIC ACID  
R.T.: 10.458 min  
Delta R.T.: -0.001 min  
Response: 338275500  
Conc: 723.81 ng/ml



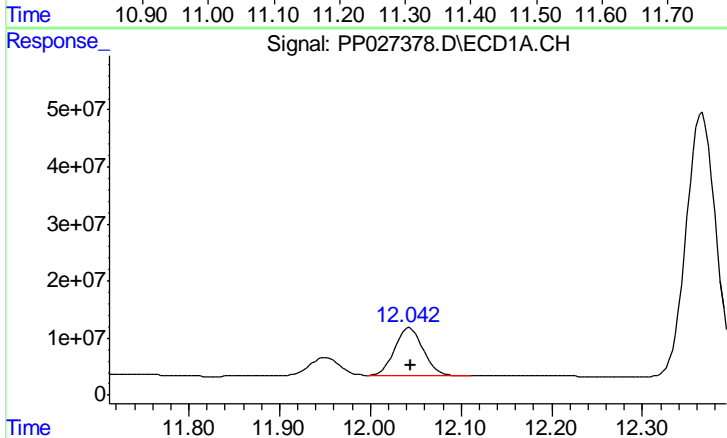
#2 3,5-DICHLOROBENZOIC ACID  
R.T.: 10.249 min  
Delta R.T.: 0.000 min  
Response: 370385004  
Conc: 671.10 ng/ml



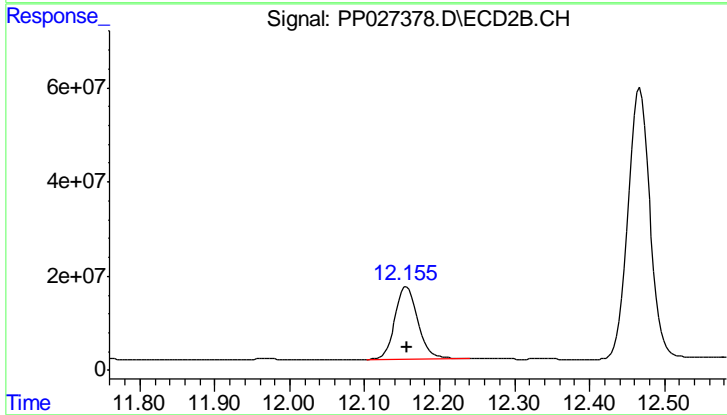
#3 4-Nitrophenol  
 R.T.: 11.618 min  
 Delta R.T.: 0.000 min  
 Response: 329638380  
 Conc: 778.79 ng/ml



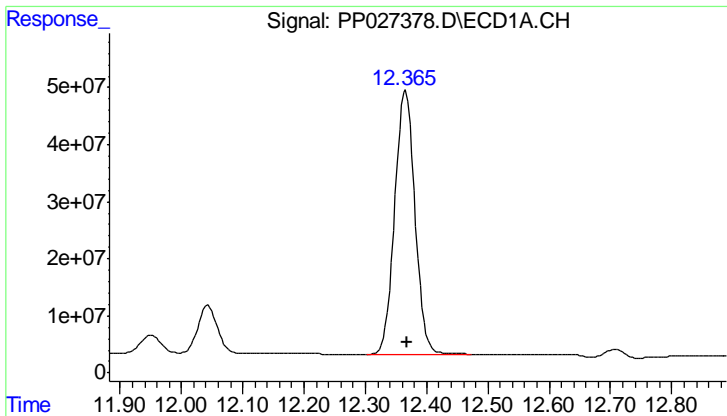
#3 4-Nitrophenol  
 R.T.: 11.299 min  
 Delta R.T.: 0.000 min  
 Response: 156670617  
 Conc: 678.14 ng/ml



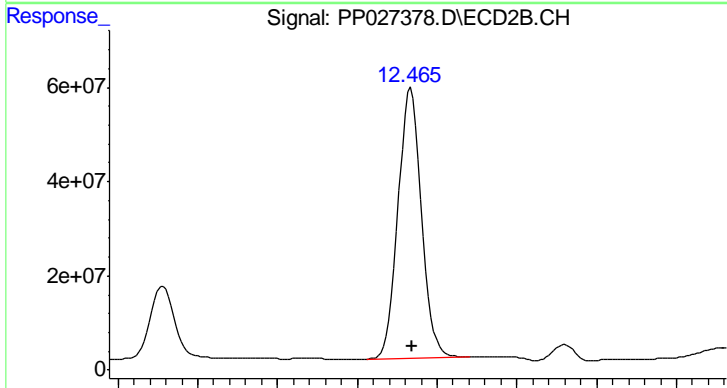
#4 2,4-DCAA  
 R.T.: 12.044 min  
 Delta R.T.: -0.001 min  
 Response: 187098508  
 Conc: 753.97 ng/ml



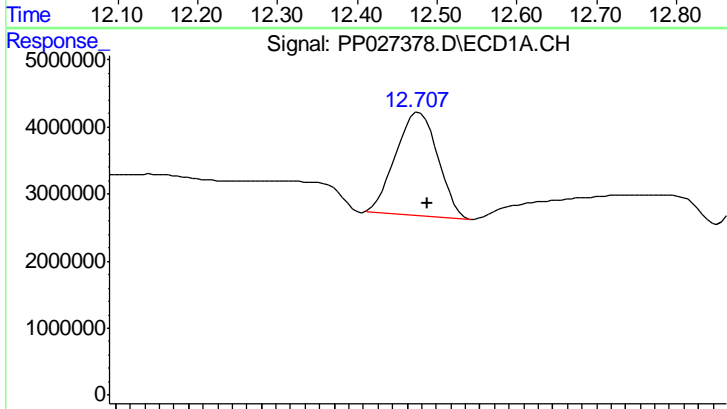
#4 2,4-DCAA  
 R.T.: 12.156 min  
 Delta R.T.: 0.000 min  
 Response: 326657377  
 Conc: 722.36 ng/ml



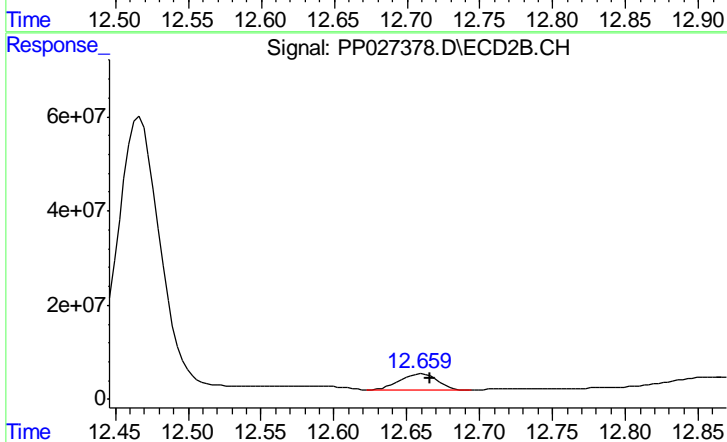
#5 DICAMBA  
 R.T.: 12.366 min  
 Delta R.T.: -0.001 min  
 Response: 1058028744  
 Conc: 686.53 ng/ml



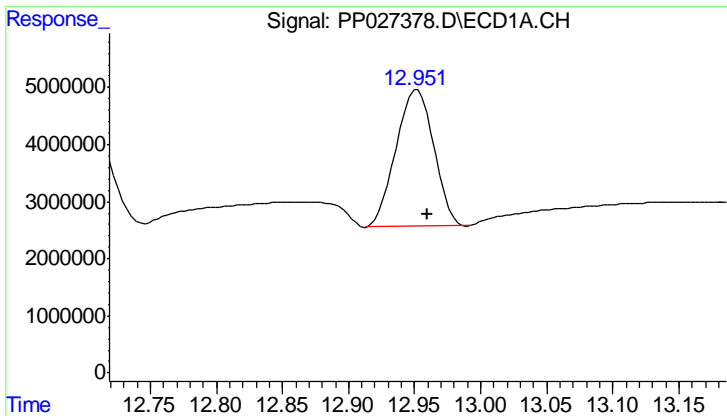
#5 DICAMBA  
 R.T.: 12.467 min  
 Delta R.T.: -0.003 min  
 Response: 1168124895  
 Conc: 676.24 ng/ml



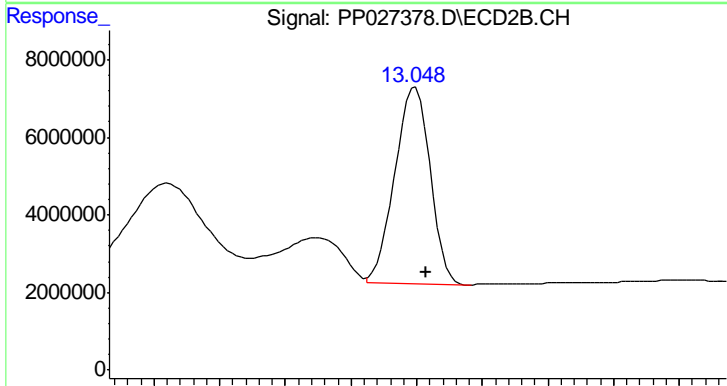
#6 MCPP  
 R.T.: 12.708 min  
 Delta R.T.: -0.006 min  
 Response: 30908718  
 Conc: 71.65 ug/ml



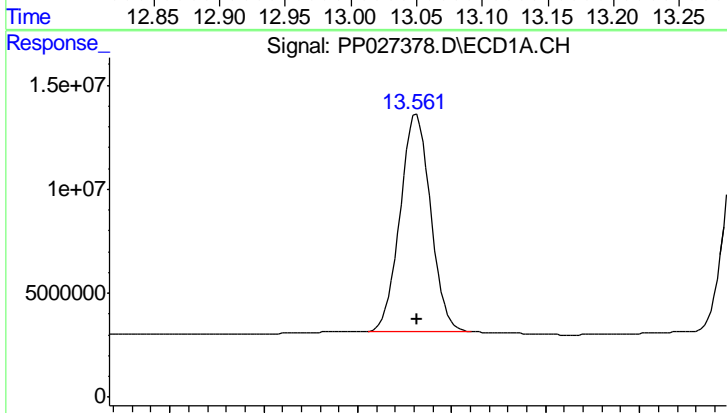
#6 MCPP  
 R.T.: 12.660 min  
 Delta R.T.: -0.006 min  
 Response: 61047380  
 Conc: 74.37 ug/ml



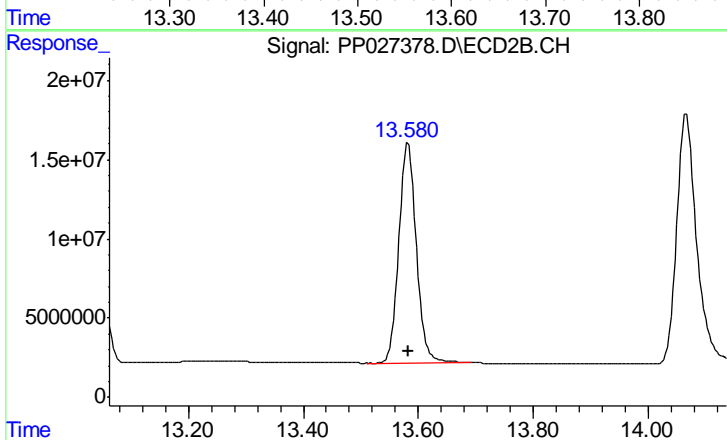
#7 MCPA  
R.T.: 12.952 min  
Delta R.T.: -0.008 min  
Response: 47469231  
Conc: 66.05 ug/ml



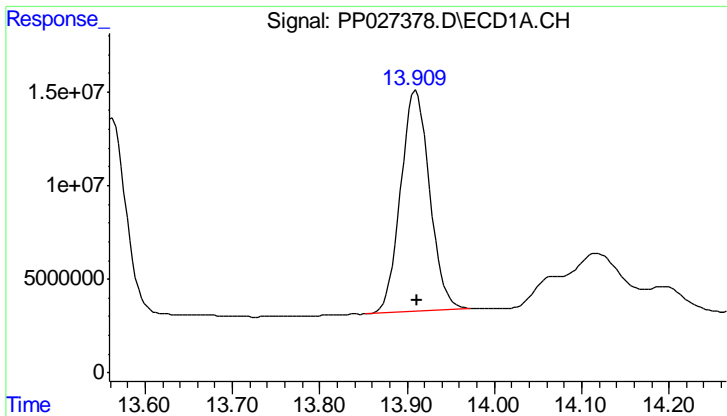
#7 MCPA  
R.T.: 13.049 min  
Delta R.T.: -0.008 min  
Response: 95132922  
Conc: 72.81 ug/ml



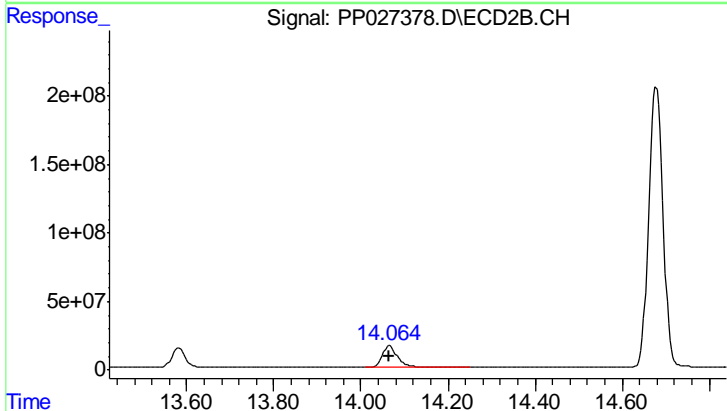
#8 DICHLORPROP  
R.T.: 13.563 min  
Delta R.T.: 0.000 min  
Response: 236017965  
Conc: 726.29 ng/ml



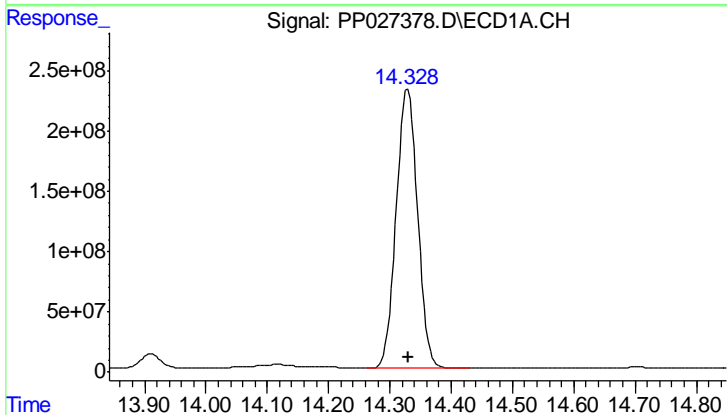
#8 DICHLORPROP  
R.T.: 13.582 min  
Delta R.T.: 0.000 min  
Response: 292573510  
Conc: 685.92 ng/ml



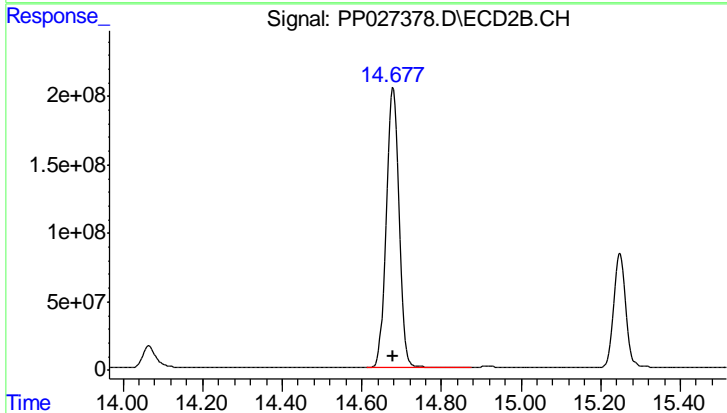
#9 2,4-D  
R.T.: 13.910 min  
Delta R.T.: -0.001 min  
Response: 272504934  
Conc: 727.63 ng/ml



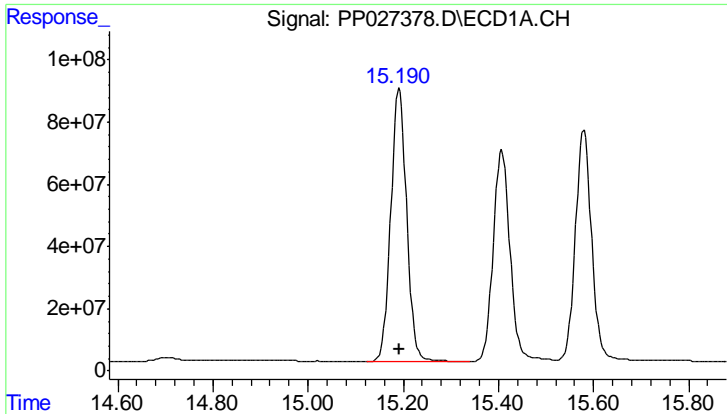
#9 2,4-D  
R.T.: 14.066 min  
Delta R.T.: 0.000 min  
Response: 384185826  
Conc: 704.69 ng/ml



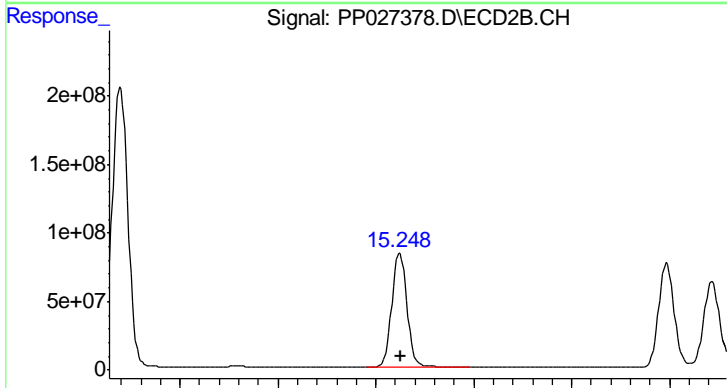
#10 Pentachlorophenol  
R.T.: 14.329 min  
Delta R.T.: -0.001 min  
Response: 5615187114  
Conc: 697.44 ng/ml



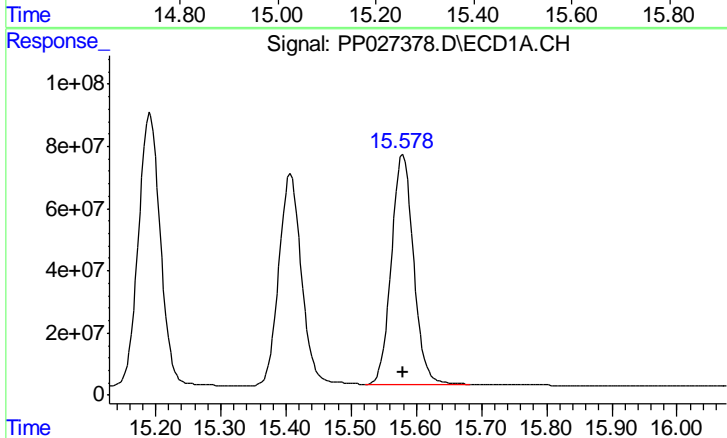
#10 Pentachlorophenol  
R.T.: 14.678 min  
Delta R.T.: -0.001 min  
Response: 4672809322  
Conc: 677.58 ng/ml



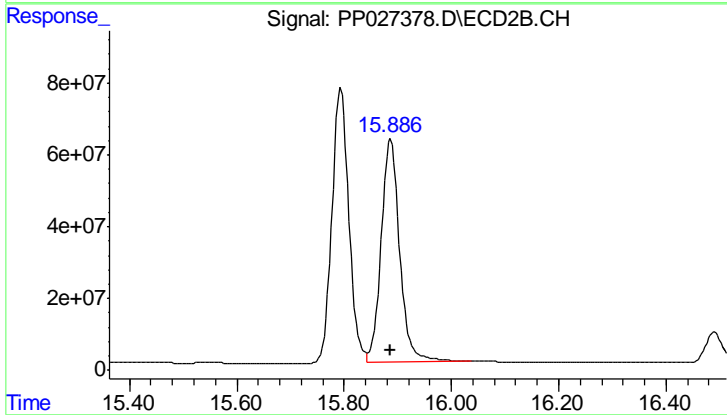
#11 2,4,5-TP (SILVEX)  
 R.T.: 15.192 min  
 Delta R.T.: -0.001 min  
 Response: 2042998404  
 Conc: 700.19 ng/ml



#11 2,4,5-TP (SILVEX)  
 R.T.: 15.249 min  
 Delta R.T.: 0.000 min  
 Response: 1815998742  
 Conc: 697.71 ng/ml

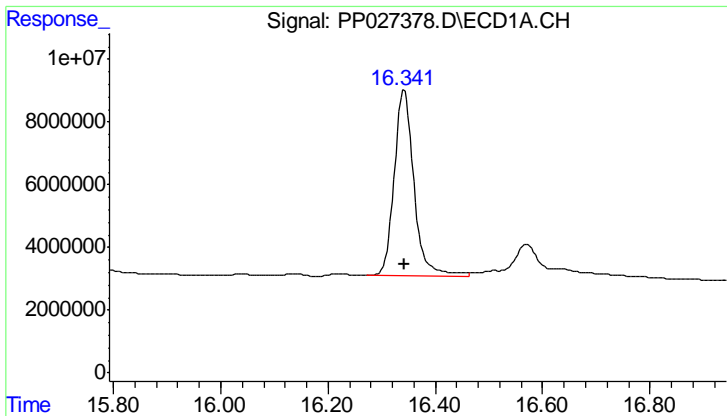


#12 2,4,5-T  
 R.T.: 15.580 min  
 Delta R.T.: 0.000 min  
 Response: 1748042480  
 Conc: 713.29 ng/ml



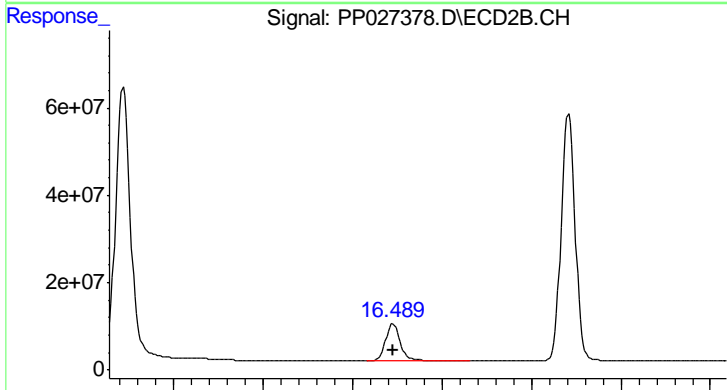
#12 2,4,5-T  
 R.T.: 15.887 min  
 Delta R.T.: 0.000 min  
 Response: 1482749773  
 Conc: 720.67 ng/ml





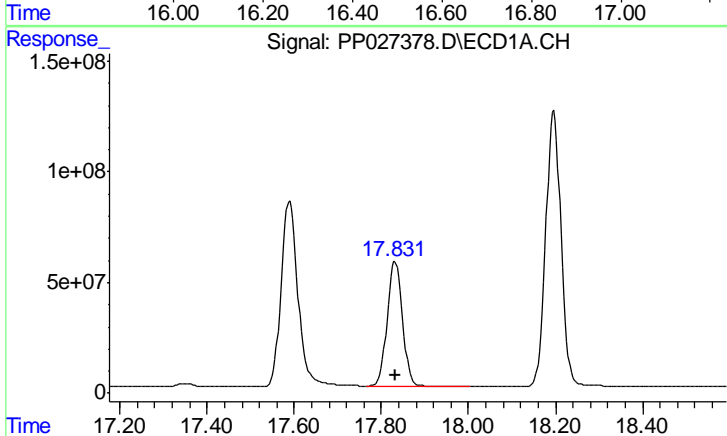
#13 2,4-DB

R.T.: 16.342 min  
Delta R.T.: 0.000 min  
Response: 152400600  
Conc: 786.49 ng/ml



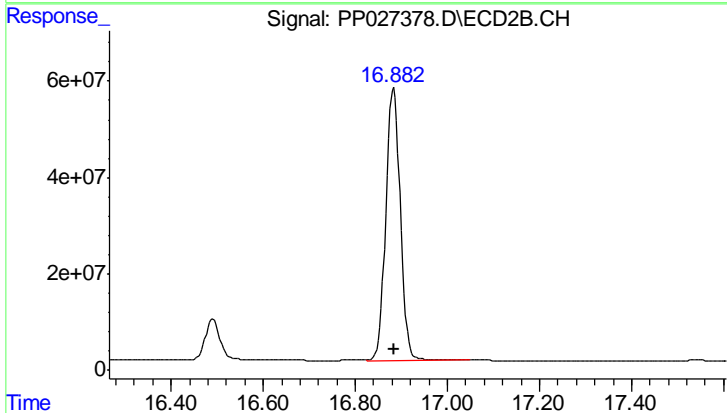
#13 2,4-DB

R.T.: 16.490 min  
Delta R.T.: 0.000 min  
Response: 195240772  
Conc: 746.68 ng/ml



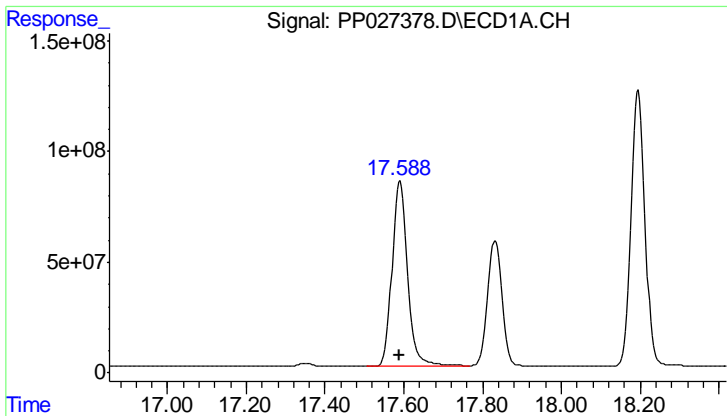
#14 DINOSEB

R.T.: 17.832 min  
Delta R.T.: -0.001 min  
Response: 1398445623  
Conc: 680.40 ng/ml

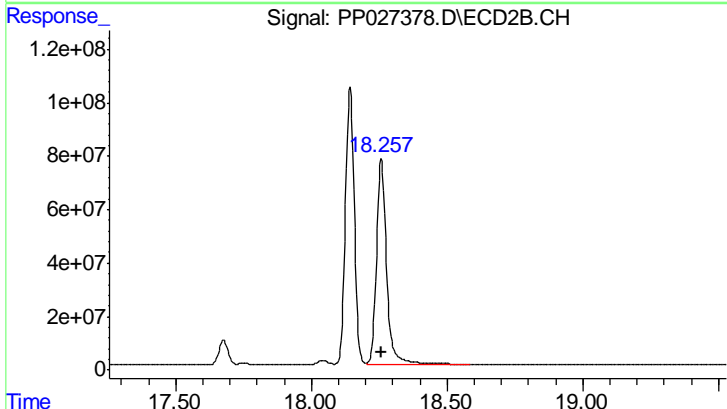


#14 DINOSEB

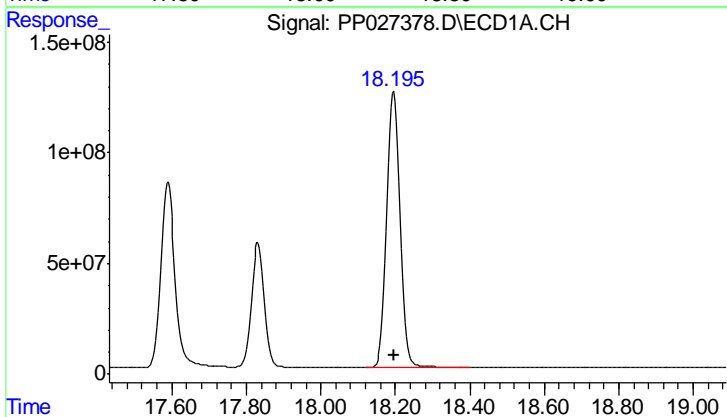
R.T.: 16.883 min  
Delta R.T.: 0.000 min  
Response: 1234396180  
Conc: 672.93 ng/ml



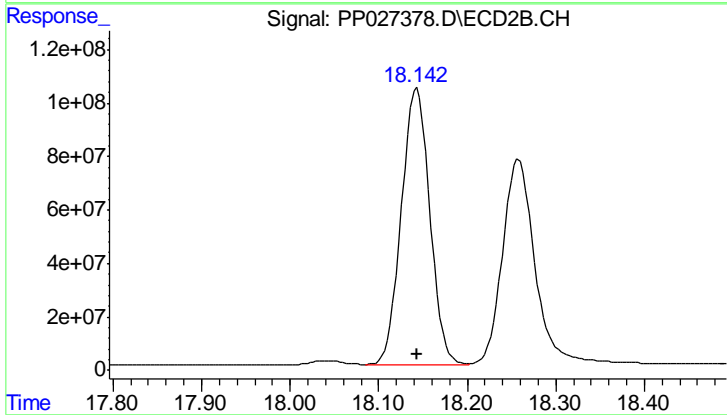
#15 Picloram  
R.T.: 17.589 min  
Delta R.T.: 0.000 min  
Response: 2291359027  
Conc: 705.13 ng/ml



#15 Picloram  
R.T.: 18.258 min  
Delta R.T.: 0.001 min  
Response: 2003911121  
Conc: 723.99 ng/ml



#16 DCPA  
R.T.: 18.196 min  
Delta R.T.: -0.001 min  
Response: 3050498112  
Conc: 721.94 ng/ml



#16 DCPA  
R.T.: 18.143 min  
Delta R.T.: 0.000 min  
Response: 2319459625  
Conc: 697.41 ng/ml