

Data Path : Z:\pestpcbsrv\HPCHEM1\ECD\_P\Data\PP091721\  
 Data File : PP039338.D  
 Signal(s) : Signal #1: ECD1A.CH Signal #2: ECD2B.CH  
 Acq On : 17 Sep 2021 13:13  
 Operator : AJ\MA  
 Sample : AR1242IC050  
 Misc :  
 ALS Vial : 14 Sample Multiplier: 1

Instrument :  
 ECD\_P  
 ClientSampleId :

Integration File signal 1: autoint1.e  
 Integration File signal 2: autoint2.e  
 Quant Time: Sep 17 15:45:32 2021  
 Quant Method : Z:\pestpcbsrv\HPCHEM1\ECD\_P\methods\PP091721.M  
 Quant Title : GC EXTRACTABLES  
 QLast Update : Fri Sep 17 15:42:44 2021  
 Response via : Initial Calibration  
 Integrator: ChemStation 6890 Scale Mode: Small noise peaks clipped

Volume Inj. : 2 µl  
 Signal #1 Phase : ZB-MR1 Signal #2 Phase: ZB-MR2  
 Signal #1 Info : 30Mx0.32mmx 0.50µ Signal #2 Info : 30M x 0.32mm x 0.25µm

Compound	RT#1	RT#2	Resp#1	Resp#2	ng/ml	ng/ml
-----						
System Monitoring Compounds						
1) SA Tetrachlo...	5.048	4.122	114304	121540	4.439	4.314
2) SA Decachlor...	11.173	9.501	100664	126711	4.767	4.622
Target Compounds						
16) L4 AR-1242-1	6.373	5.395	31599	35310	46.414	47.780
17) L4 AR-1242-2	6.398	5.416	43478	45338	46.212	44.820
18) L4 AR-1242-3	6.464	5.610	28305	23768	46.644	42.646
19) L4 AR-1242-4	6.573	5.707	21829	20107	44.747	37.883
20) L4 AR-1242-5	7.356	6.275	25738	32037	50.508	45.472
-----						

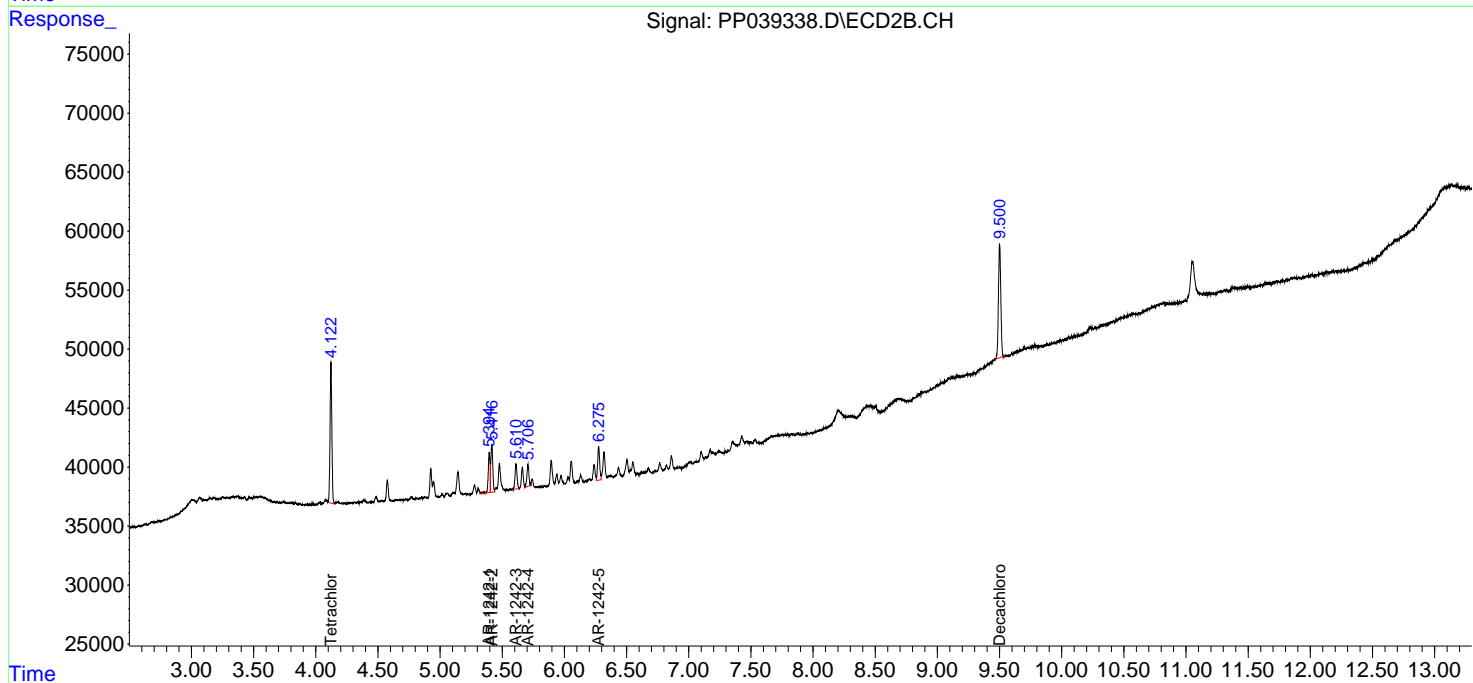
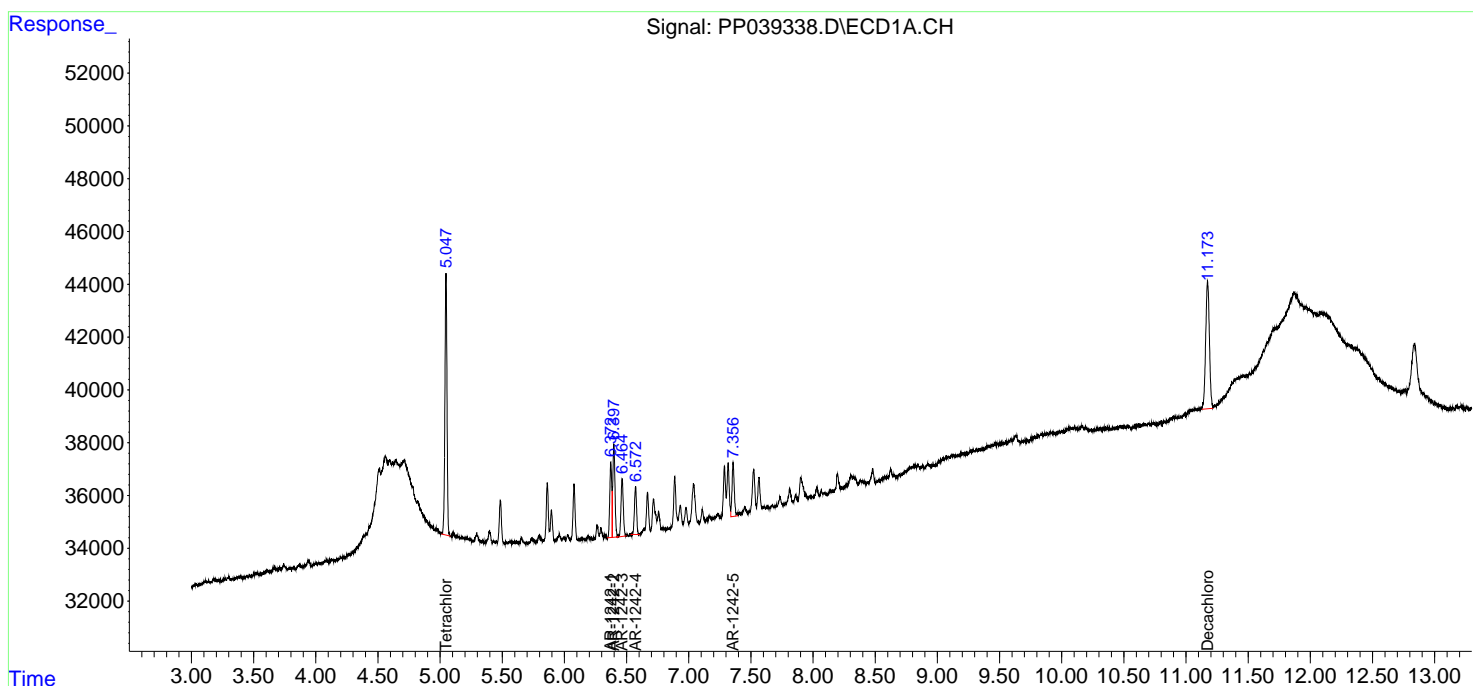
(f)=RT Delta > 1/2 Window (#)=Amounts differ by > 25% (m)=manual int.

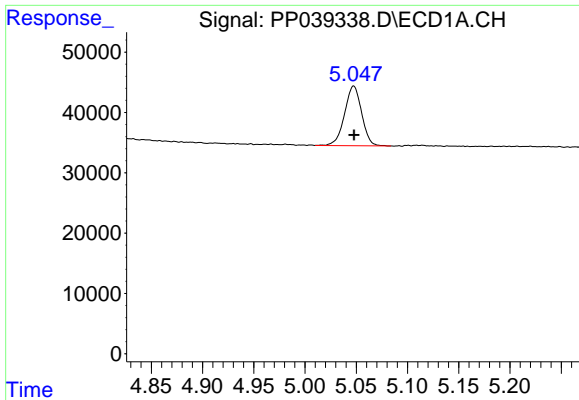
Data Path : Z:\pestpcbsrv\HPCHEM1\ECD\_P\Data\PP091721\  
 Data File : PP039338.D  
 Signal(s) : Signal #1: ECD1A.CH Signal #2: ECD2B.CH  
 Acq On : 17 Sep 2021 13:13  
 Operator : AJ\MA  
 Sample : AR1242IC050  
 Misc :  
 ALS Vial : 14 Sample Multiplier: 1

Instrument :  
 ECD\_P  
 ClientSampled :

Integration File signal 1: autoint1.e  
 Integration File signal 2: autoint2.e  
 Quant Time: Sep 17 15:45:32 2021  
 Quant Method : Z:\pestpcbsrv\HPCHEM1\ECD\_P\methods\PP091721.M  
 Quant Title : GC EXTRACTABLES  
 QLast Update : Fri Sep 17 15:42:44 2021  
 Response via : Initial Calibration  
 Integrator: ChemStation 6890 Scale Mode: Small noise peaks clipped

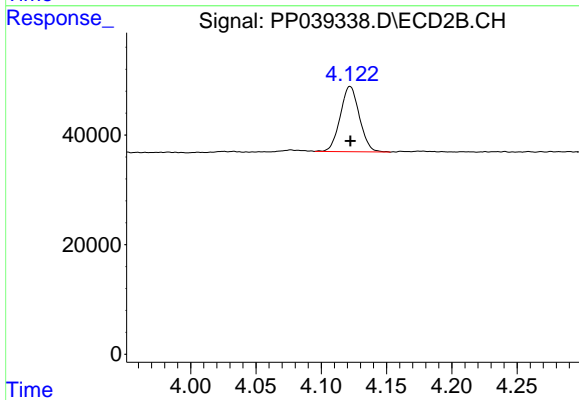
Volume Inj. : 2 µl  
 Signal #1 Phase : ZB-MR1 Signal #2 Phase: ZB-MR2  
 Signal #1 Info : 30Mx0.32mmx 0.50µ Signal #2 Info : 30M x 0.32mm x 0.25µm



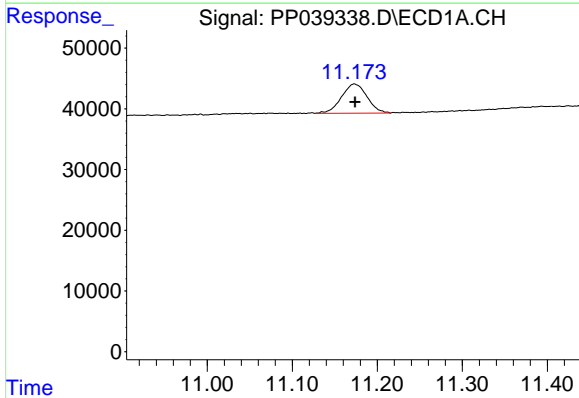


#1 Tetrachloro-m-xylene  
 R.T.: 5.048 min  
 Delta R.T.: 0.000 min  
 Response: 114304  
 Conc: 4.44 ng/ml

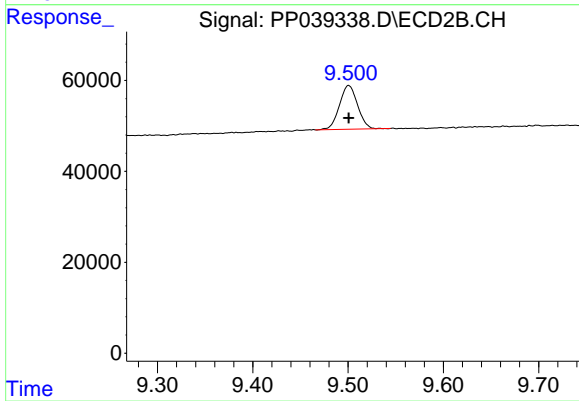
Instrument :  
 ECD\_P  
 ClientSampled :



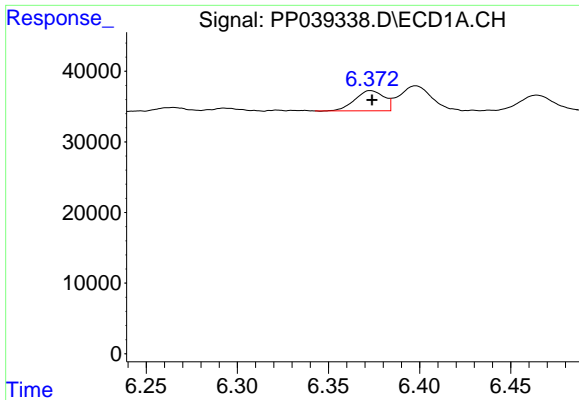
#1 Tetrachloro-m-xylene  
 R.T.: 4.122 min  
 Delta R.T.: 0.000 min  
 Response: 121540  
 Conc: 4.31 ng/ml



#2 Decachlorobiphenyl  
 R.T.: 11.173 min  
 Delta R.T.: 0.000 min  
 Response: 100664  
 Conc: 4.77 ng/ml

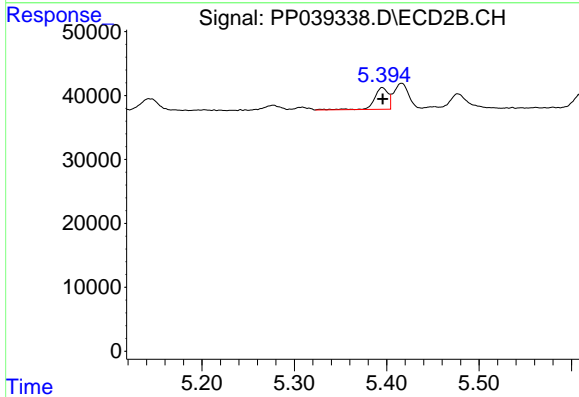


#2 Decachlorobiphenyl  
 R.T.: 9.501 min  
 Delta R.T.: 0.000 min  
 Response: 126711  
 Conc: 4.62 ng/ml

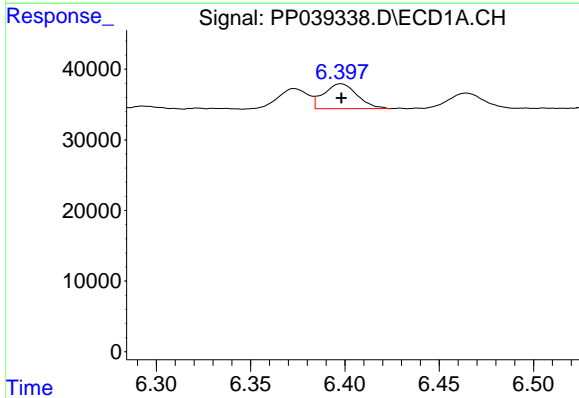


#16 AR-1242-1  
 R.T.: 6.373 min  
 Delta R.T.: 0.000 min  
 Response: 31599  
 Conc: 46.41 ng/ml

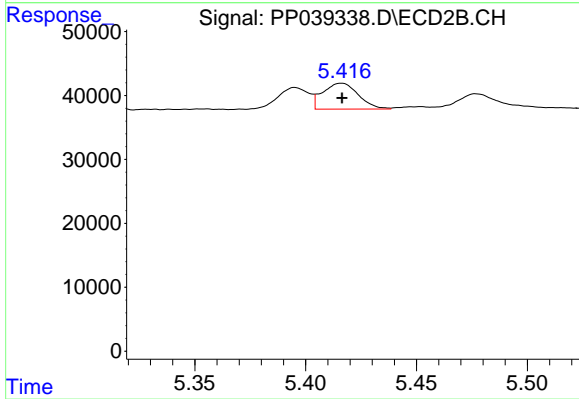
Instrument :  
 ECD\_P  
 ClientSampleId :



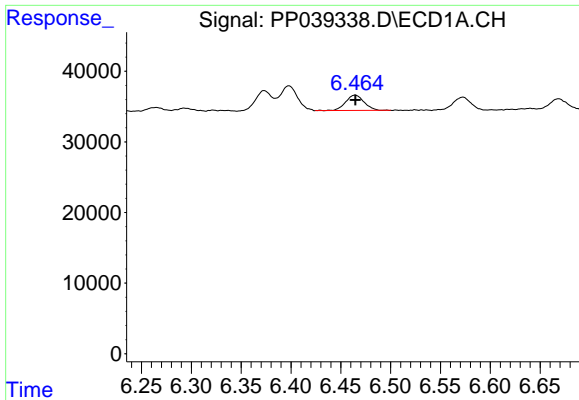
#16 AR-1242-1  
 R.T.: 5.395 min  
 Delta R.T.: 0.000 min  
 Response: 35310  
 Conc: 47.78 ng/ml



#17 AR-1242-2  
 R.T.: 6.398 min  
 Delta R.T.: 0.000 min  
 Response: 43478  
 Conc: 46.21 ng/ml

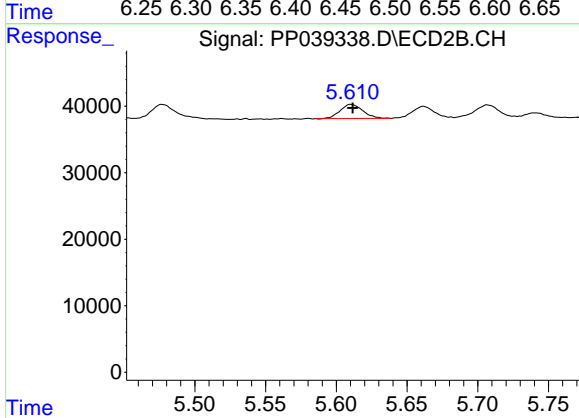


#17 AR-1242-2  
 R.T.: 5.416 min  
 Delta R.T.: 0.000 min  
 Response: 45338  
 Conc: 44.82 ng/ml

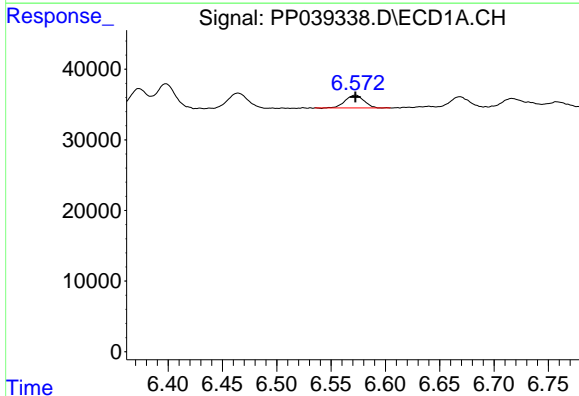


#18 AR-1242-3  
 R.T.: 6.464 min  
 Delta R.T.: 0.000 min  
 Response: 28305  
 Conc: 46.64 ng/ml

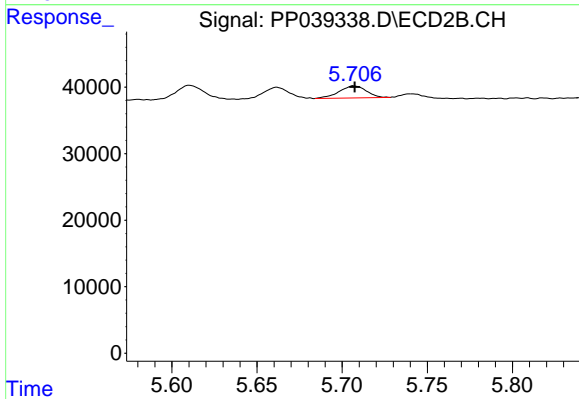
Instrument :  
 ECD\_P  
 ClientSampled :



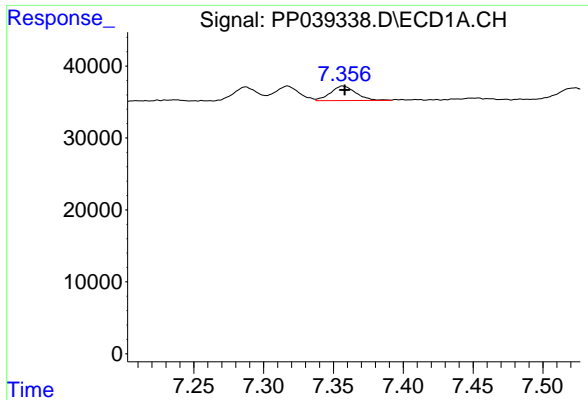
#18 AR-1242-3  
 R.T.: 5.610 min  
 Delta R.T.: -0.001 min  
 Response: 23768  
 Conc: 42.65 ng/ml



#19 AR-1242-4  
 R.T.: 6.573 min  
 Delta R.T.: 0.000 min  
 Response: 21829  
 Conc: 44.75 ng/ml



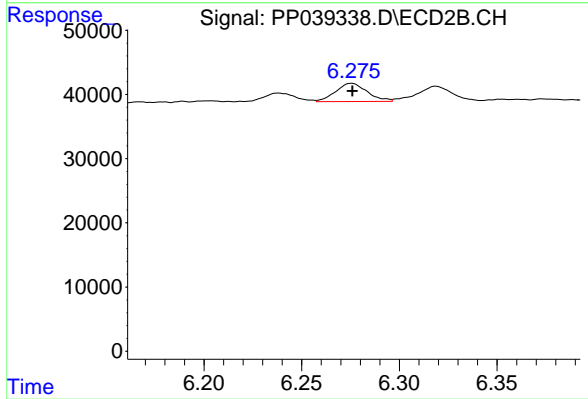
#19 AR-1242-4  
 R.T.: 5.707 min  
 Delta R.T.: 0.000 min  
 Response: 20107  
 Conc: 37.88 ng/ml



#20 AR-1242-5

R.T.: 7.356 min  
Delta R.T.: -0.002 min  
Response: 25738  
Conc: 50.51 ng/ml

Instrument :  
ECD\_P  
ClientSampleId :



#20 AR-1242-5

R.T.: 6.275 min  
Delta R.T.: 0.000 min  
Response: 32037  
Conc: 45.47 ng/ml