

Data Path : Z:\pestpcbsrv\HPCHEM1\ECD\_P\Data\PP091721\  
 Data File : PP039349.D  
 Signal(s) : Signal #1: ECD1A.CH Signal #2: ECD2B.CH  
 Acq On : 17 Sep 2021 16:17  
 Operator : AJ\MA  
 Sample : AR1262ICC1000  
 Misc :  
 ALS Vial : 25 Sample Multiplier: 1

Instrument :  
 ECD\_P  
 ClientSampleId :

Integration File signal 1: autoint1.e  
 Integration File signal 2: autoint2.e  
 Quant Time: Sep 17 19:15:52 2021  
 Quant Method : Z:\pestpcbsrv\HPCHEM1\ECD\_P\methods\PP091721.M  
 Quant Title : GC EXTRACTABLES  
 QLast Update : Fri Sep 17 19:13:50 2021  
 Response via : Initial Calibration  
 Integrator: ChemStation 6890 Scale Mode: Small noise peaks clipped

Volume Inj. : 2 µl  
 Signal #1 Phase : ZB-MR1 Signal #2 Phase: ZB-MR2  
 Signal #1 Info : 30Mx0.32mmx 0.50µ Signal #2 Info : 30M x 0.32mm x 0.25µm

| Compound                    | RT#1   | RT#2  | Resp#1  | Resp#2  | ng/ml   | ng/ml   |
|-----------------------------|--------|-------|---------|---------|---------|---------|
| -----                       |        |       |         |         |         |         |
| System Monitoring Compounds |        |       |         |         |         |         |
| 1) SA Tetrachlo...          | 5.048  | 4.122 | 2390780 | 2625091 | 98.345  | 98.529  |
| 2) SA Decachlor...          | 11.174 | 9.500 | 1925246 | 2549619 | 92.014  | 96.849  |
| Target Compounds            |        |       |         |         |         |         |
| 36) L8 AR-1262-1            | 8.699  | 7.533 | 1162809 | 908140  | 912.871 | 964.354 |
| 37) L8 AR-1262-2            | 9.271  | 8.086 | 2139643 | 3185719 | 933.379 | 981.108 |
| 38) L8 AR-1262-3            | 9.593  | 8.376 | 978687  | 1248200 | 890.459 | 957.239 |
| 39) L8 AR-1262-4            | 9.689  | 8.441 | 641356  | 2457690 | 950.400 | 965.093 |
| 40) L8 AR-1262-5            | 10.385 | 8.941 | 867244  | 1123371 | 935.920 | 954.417 |
| -----                       |        |       |         |         |         |         |

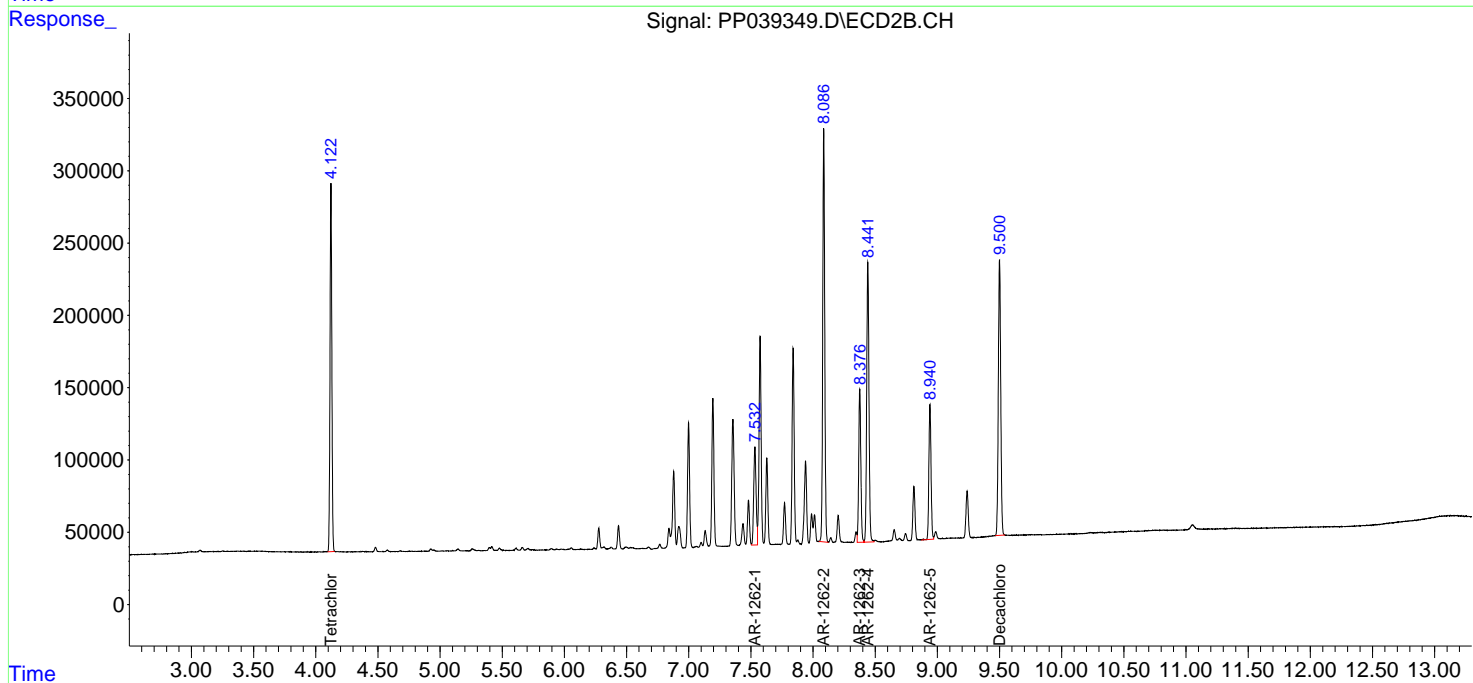
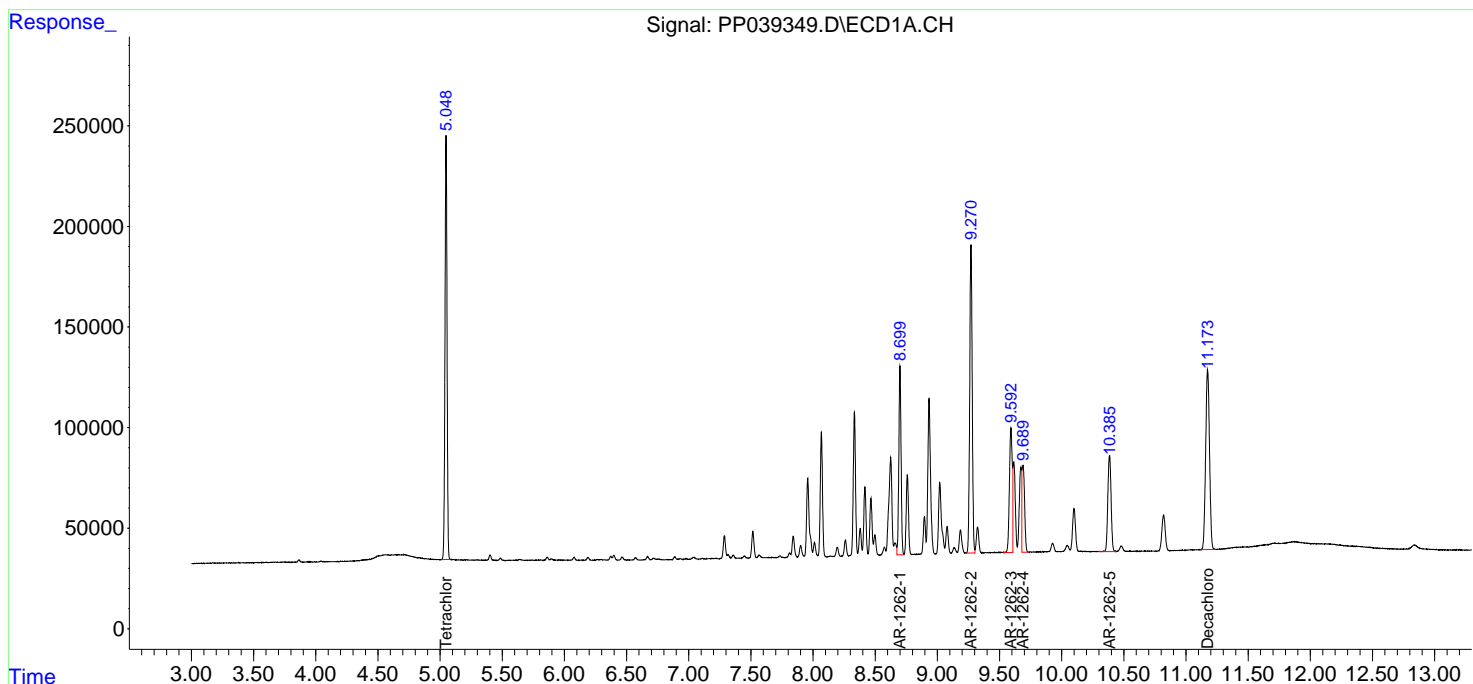
(f)=RT Delta > 1/2 Window (#)=Amounts differ by > 25% (m)=manual int.

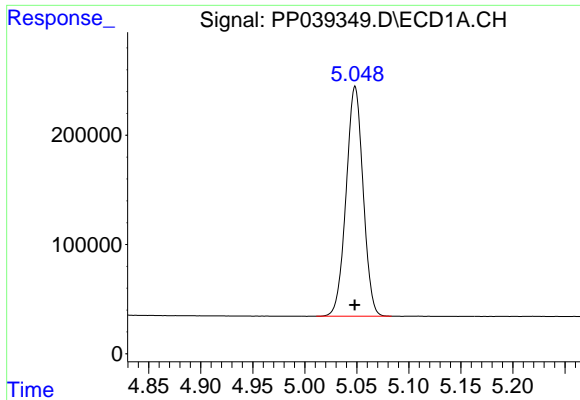
Data Path : Z:\pestpcbsrv\HPCHEM1\ECD\_P\Data\PP091721\  
 Data File : PP039349.D  
 Signal(s) : Signal #1: ECD1A.CH Signal #2: ECD2B.CH  
 Acq On : 17 Sep 2021 16:17  
 Operator : AJ\MA  
 Sample : AR1262ICC1000  
 Misc :  
 ALS Vial : 25 Sample Multiplier: 1

Instrument :  
 ECD\_P  
 ClientSampled :

Integration File signal 1: autoint1.e  
 Integration File signal 2: autoint2.e  
 Quant Time: Sep 17 19:15:52 2021  
 Quant Method : Z:\pestpcbsrv\HPCHEM1\ECD\_P\methods\PP091721.M  
 Quant Title : GC EXTRACTABLES  
 QLast Update : Fri Sep 17 19:13:50 2021  
 Response via : Initial Calibration  
 Integrator: ChemStation 6890 Scale Mode: Small noise peaks clipped

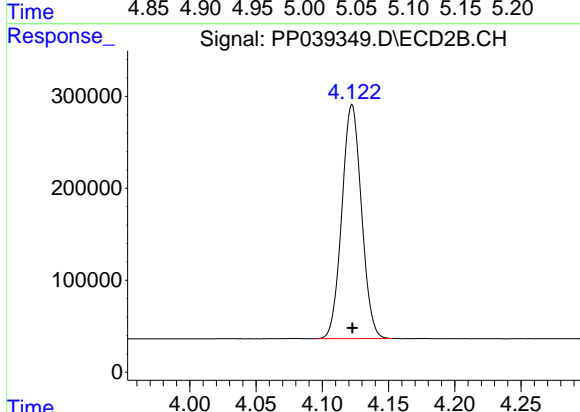
Volume Inj. : 2 µl  
 Signal #1 Phase : ZB-MR1 Signal #2 Phase: ZB-MR2  
 Signal #1 Info : 30Mx0.32mmx 0.50µ Signal #2 Info : 30M x 0.32mm x 0.25µm



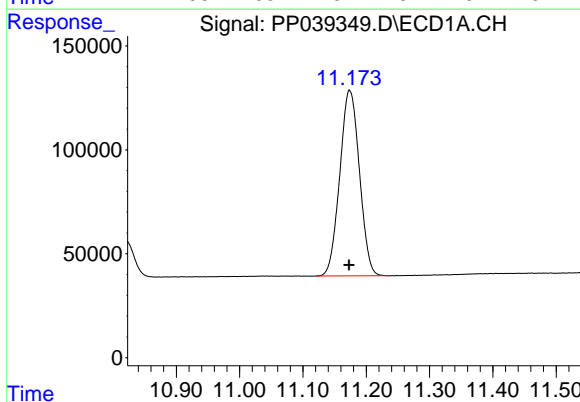


#1 Tetrachloro-m-xylene  
 R.T.: 5.048 min  
 Delta R.T.: 0.000 min  
 Response: 2390780  
 Conc: 98.35 ng/ml

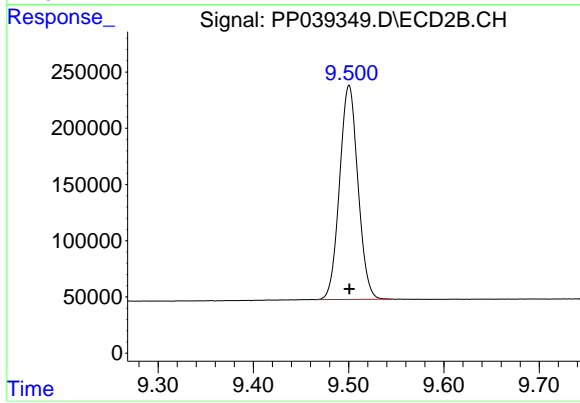
Instrument :  
 ECD\_P  
 ClientSampleId :



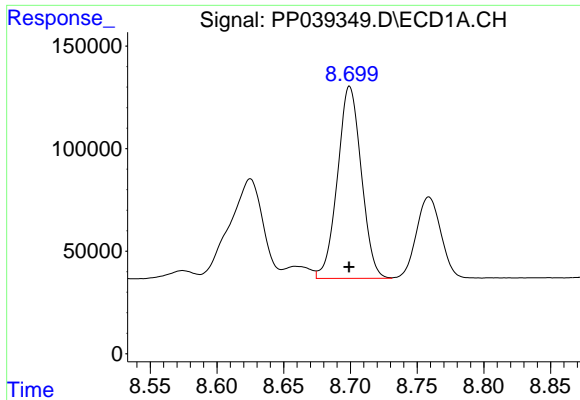
#1 Tetrachloro-m-xylene  
 R.T.: 4.122 min  
 Delta R.T.: 0.000 min  
 Response: 2625091  
 Conc: 98.53 ng/ml



#2 Decachlorobiphenyl  
 R.T.: 11.174 min  
 Delta R.T.: 0.001 min  
 Response: 1925246  
 Conc: 92.01 ng/ml



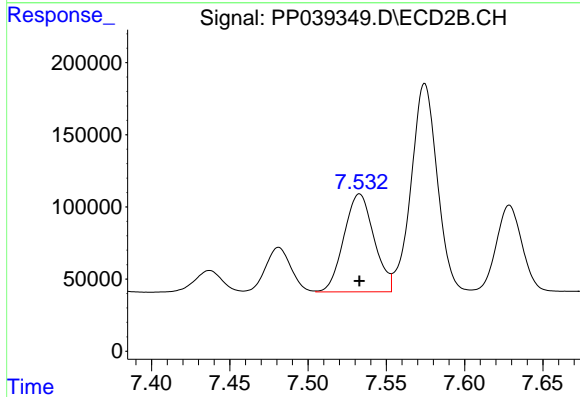
#2 Decachlorobiphenyl  
 R.T.: 9.500 min  
 Delta R.T.: 0.000 min  
 Response: 2549619  
 Conc: 96.85 ng/ml



#36 AR-1262-1

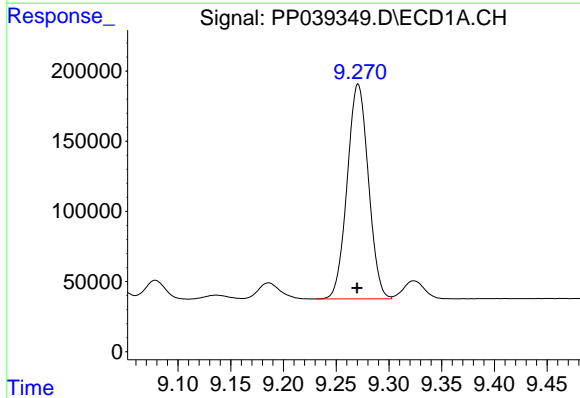
R.T.: 8.699 min  
 Delta R.T.: 0.000 min  
 Response: 1162809  
 Conc: 912.87 ng/ml

Instrument :  
 ECD\_P  
 ClientSampled :



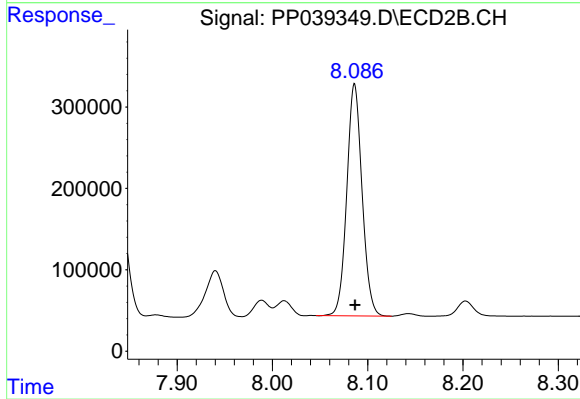
#36 AR-1262-1

R.T.: 7.533 min  
 Delta R.T.: 0.000 min  
 Response: 908140  
 Conc: 964.35 ng/ml



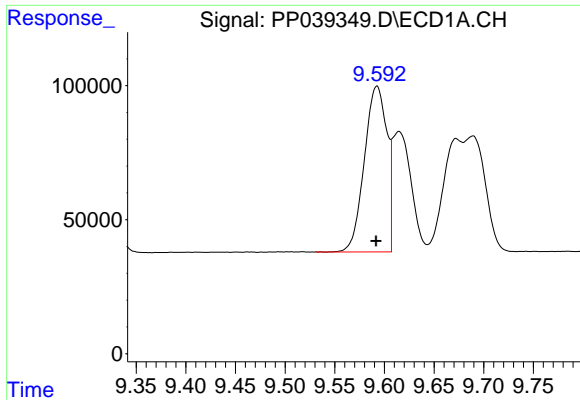
#37 AR-1262-2

R.T.: 9.271 min  
 Delta R.T.: 0.001 min  
 Response: 2139643  
 Conc: 933.38 ng/ml



#37 AR-1262-2

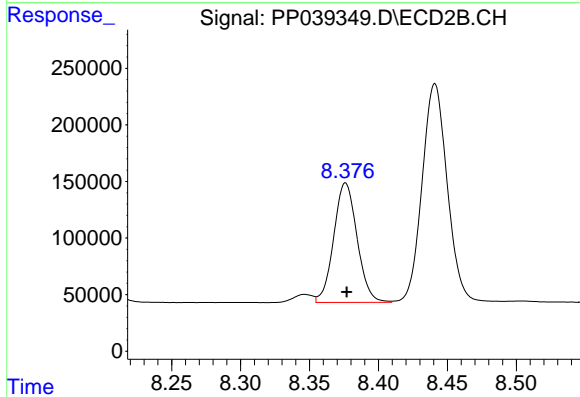
R.T.: 8.086 min  
 Delta R.T.: 0.000 min  
 Response: 3185719  
 Conc: 981.11 ng/ml



#38 AR-1262-3

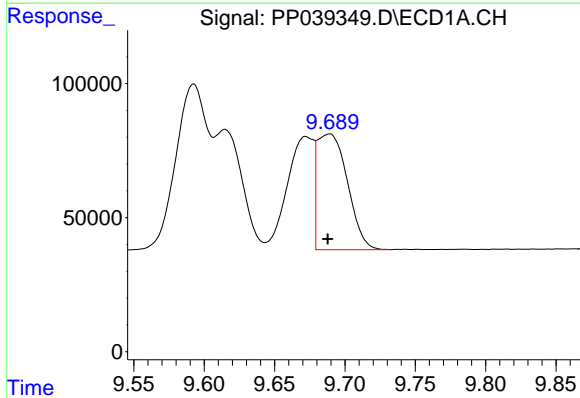
R.T.: 9.593 min  
 Delta R.T.: 0.000 min  
 Response: 978687  
 Conc: 890.46 ng/ml

Instrument :  
 ECD\_P  
 ClientSampleId :



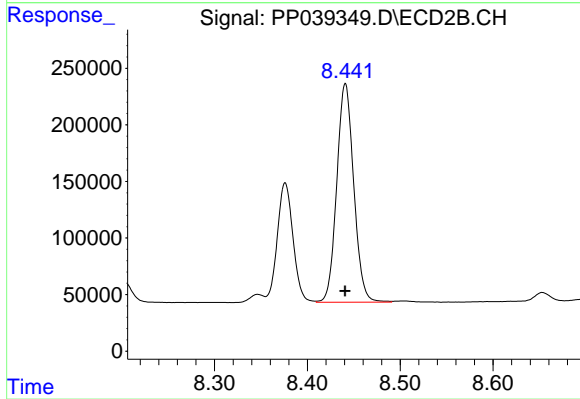
#38 AR-1262-3

R.T.: 8.376 min  
 Delta R.T.: 0.000 min  
 Response: 1248200  
 Conc: 957.24 ng/ml



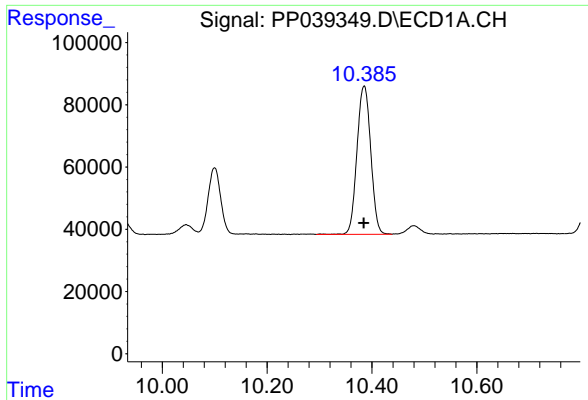
#39 AR-1262-4

R.T.: 9.689 min  
 Delta R.T.: 0.001 min  
 Response: 641356  
 Conc: 950.40 ng/ml



#39 AR-1262-4

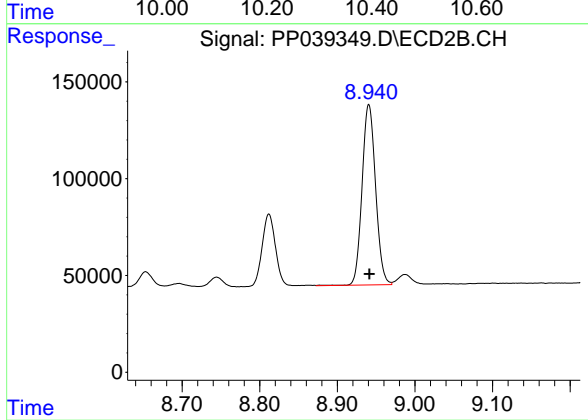
R.T.: 8.441 min  
 Delta R.T.: 0.000 min  
 Response: 2457690  
 Conc: 965.09 ng/ml



#40 AR-1262-5

R.T.: 10.385 min  
Delta R.T.: 0.000 min  
Response: 867244  
Conc: 935.92 ng/ml

Instrument :  
ECD\_P  
ClientSampleId :



#40 AR-1262-5

R.T.: 8.941 min  
Delta R.T.: 0.000 min  
Response: 1123371  
Conc: 954.42 ng/ml