

Data Path : Z:\pestpcbsrv\HPCHEM1\ECD\_P\Data\PP091818\  
 Data File : PP027419.D  
 Signal(s) : Signal #1: ECD1A.CH Signal #2: ECD2B.CH  
 Acq On : 19 Sep 2018 00:24  
 Operator : EI\MA  
 Sample : HSTDCCC750  
 Misc :  
 ALS Vial : 3 Sample Multiplier: 1

Instrument :  
 ECD\_P  
 ClientSampleId :  
 HSTDCCC750

Integration File signal 1: autoint1.e  
 Integration File signal 2: autoint2.e  
 Quant Time: Sep 19 02:46:38 2018  
 Quant Method : Z:\pestpcbsrv\HPCHEM1\ECD\_P\methods\PP082918.M  
 Quant Title : 8080.M  
 QLast Update : Thu Aug 30 07:11:19 2018  
 Response via : Initial Calibration  
 Integrator: ChemStation 6890 Scale Mode: Large solvent peaks clipped

Volume Inj. : 2 µl  
 Signal #1 Phase : ZB-CLPesticides-1 Signal #2 Phase: ZB-CLPesticides-2  
 Signal #1 Info : 30M x 0.32mm x0.5 Signal #2 Info : 30M x 0.32mm x 0.25µm

Compound	RT#1	RT#2	Resp#1	Resp#2	ng/ml	ng/ml
-----						
System Monitoring Compounds						
4) S 2,4-DCAA	12.043	12.156	189.9E6	336.9E6	765.206	745.034
Target Compounds						
1) T Dalapon	3.310	2.982	388.7E6	385.0E6	634.528	642.818
2) T 3,5-DICHL...	10.457	10.248	334.9E6	379.6E6	716.547	687.717
3) T 4-Nitroph...	11.618	11.298	314.9E6	160.6E6	744.021	695.061
5) T DICAMBA	12.365	12.467	1052.2E6	1190.9E6	682.721	689.457
6) T MCPPE	12.708	12.660	31965842	64954307	73.680	79.134
7) T MCPA	12.951	13.049	50044883	104.0E6	68.944	79.633
8) T DICHLORPROP	13.562	13.581	238.1E6	304.1E6	732.568	713.049
9) T 2,4-D	13.910	14.067	278.8E6	401.1E6	744.427	735.685
10) T Pentachlo...	14.329	14.678	5551.7E6	4751.0E6	689.555	688.918
11) T 2,4,5-TP ...	15.192	15.249	2023.3E6	1855.5E6	693.436	712.901
12) T 2,4,5-T	15.580	15.887	1785.3E6	1566.8E6	728.492	761.519
13) T 2,4-DB	16.342	16.490	154.1E6	211.8E6	795.007	809.840
14) T DINOSEB	17.833	16.883	1349.9E6	1201.9E6	656.772	655.204
15) T Picloram	17.590	18.258	2539.6E6	2281.0E6	781.528	824.090
16) T DCPA	18.197	18.143	3025.9E6	2362.5E6	716.123	710.348
-----						

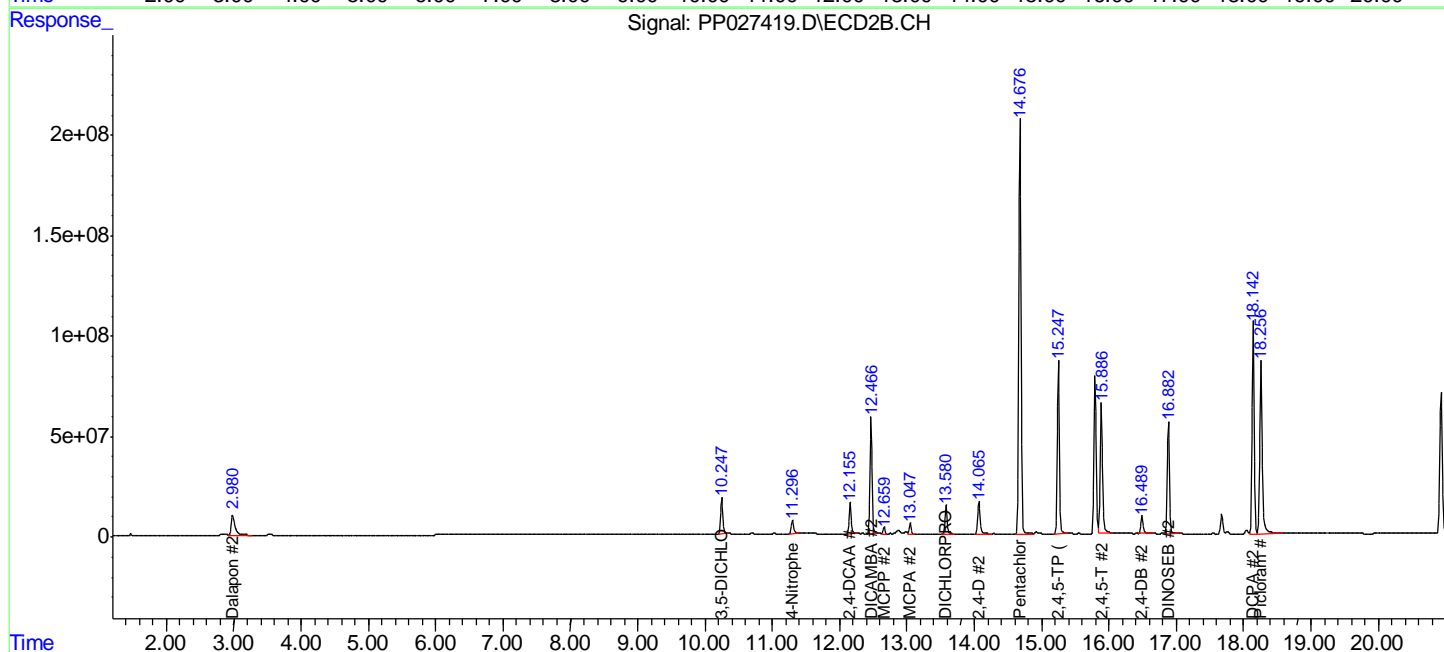
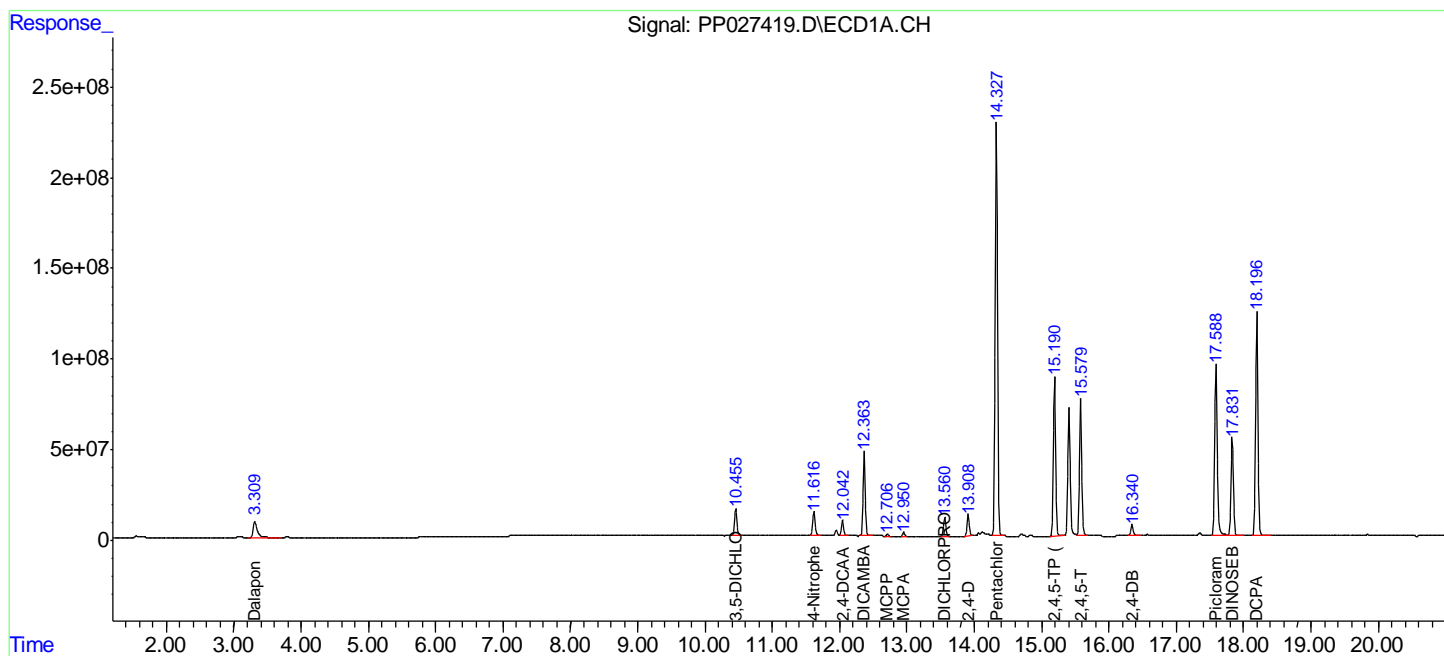
(f)=RT Delta > 1/2 Window (#)=Amounts differ by > 25% (m)=manual int.

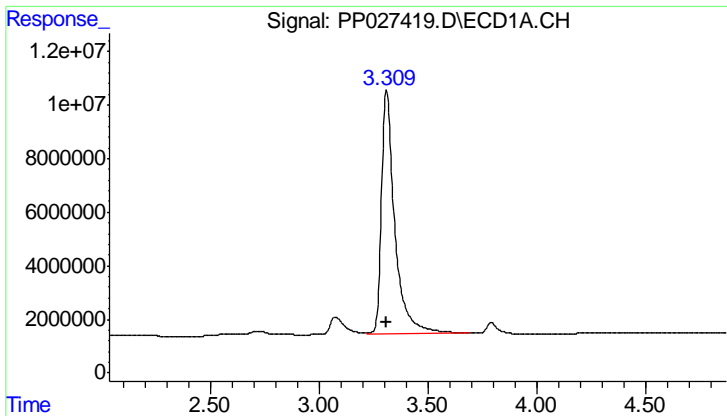
Data Path : Z:\pestpcbsrv\HPCHEM1\ECD\_P\Data\PP091818\  
 Data File : PP027419.D  
 Signal(s) : Signal #1: ECD1A.CH Signal #2: ECD2B.CH  
 Acq On : 19 Sep 2018 00:24  
 Operator : EI\MA  
 Sample : HSTDCCC750  
 Misc :  
 ALS Vial : 3 Sample Multiplier: 1

Instrument :  
 ECD\_P  
 ClientSampleId :  
 HSTDCCC750

Integration File signal 1: autoint1.e  
 Integration File signal 2: autoint2.e  
 Quant Time: Sep 19 02:46:38 2018  
 Quant Method : Z:\pestpcbsrv\HPCHEM1\ECD\_P\methods\PP082918.M  
 Quant Title : 8080.M  
 QLast Update : Thu Aug 30 07:11:19 2018  
 Response via : Initial Calibration  
 Integrator: ChemStation 6890 Scale Mode: Large solvent peaks clipped

Volume Inj. : 2 µl  
 Signal #1 Phase : ZB-CLPesticides-1 Signal #2 Phase: ZB-CLPesticides-2  
 Signal #1 Info : 30M x 0.32mm x0.5 Signal #2 Info : 30M x 0.32mm x 0.25µm

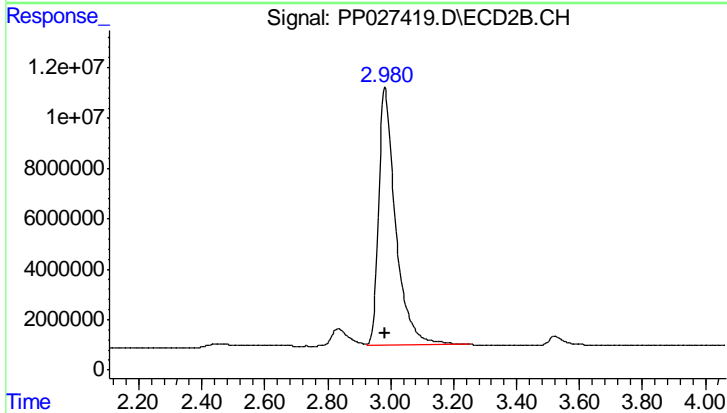




#1 Dalapon

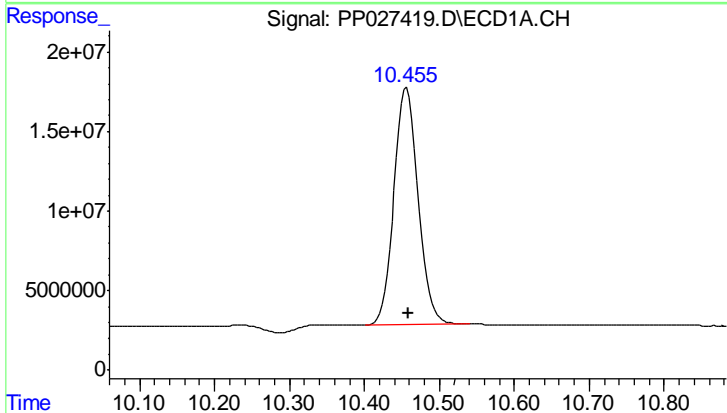
R.T.: 3.310 min  
 Delta R.T.: -0.001 min  
 Response: 388660218  
 Conc: 634.53 ng/ml

Instrument :  
 ECD\_P  
 ClientSampleId :  
 HSTDCCC750



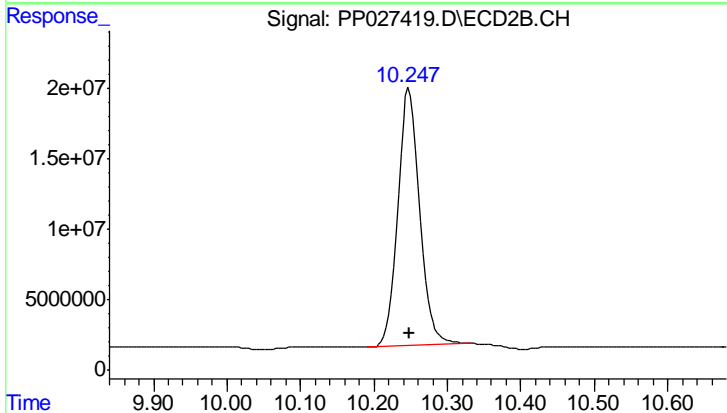
#1 Dalapon

R.T.: 2.982 min  
 Delta R.T.: 0.000 min  
 Response: 385009901  
 Conc: 642.82 ng/ml



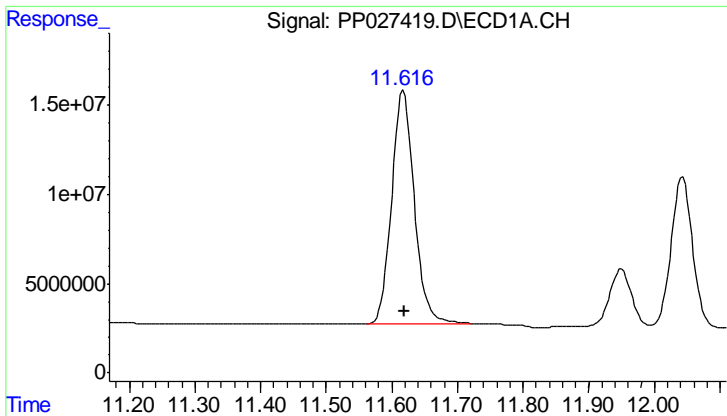
#2 3,5-DICHLOROBENZOIC ACID

R.T.: 10.457 min  
 Delta R.T.: -0.002 min  
 Response: 334882660  
 Conc: 716.55 ng/ml



#2 3,5-DICHLOROBENZOIC ACID

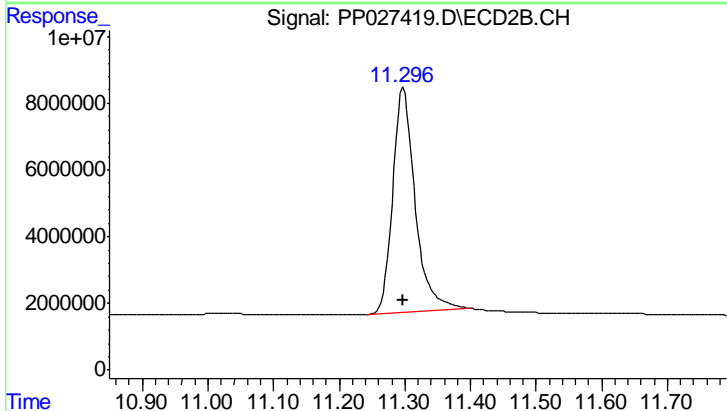
R.T.: 10.248 min  
 Delta R.T.: 0.000 min  
 Response: 379556917  
 Conc: 687.72 ng/ml



#3 4-Nitrophenol

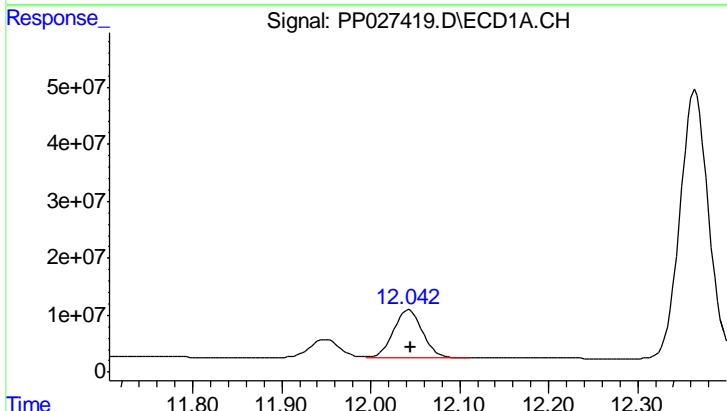
R.T.: 11.618 min  
 Delta R.T.: -0.001 min  
 Response: 314921208  
 Conc: 744.02 ng/ml

Instrument :  
 ECD\_P  
 ClientSampled :  
 HSTDCCC750



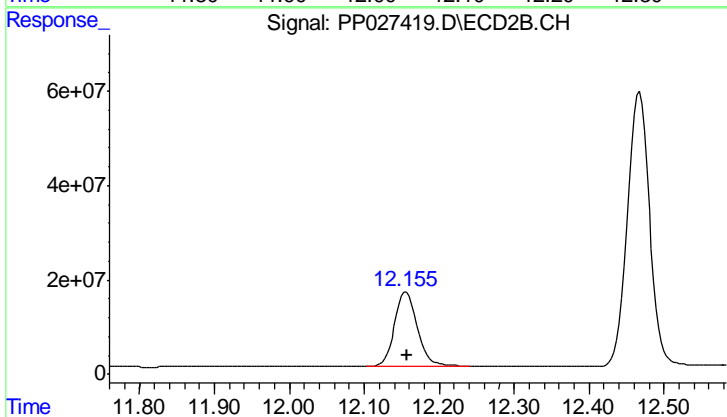
#3 4-Nitrophenol

R.T.: 11.298 min  
 Delta R.T.: 0.000 min  
 Response: 160579340  
 Conc: 695.06 ng/ml



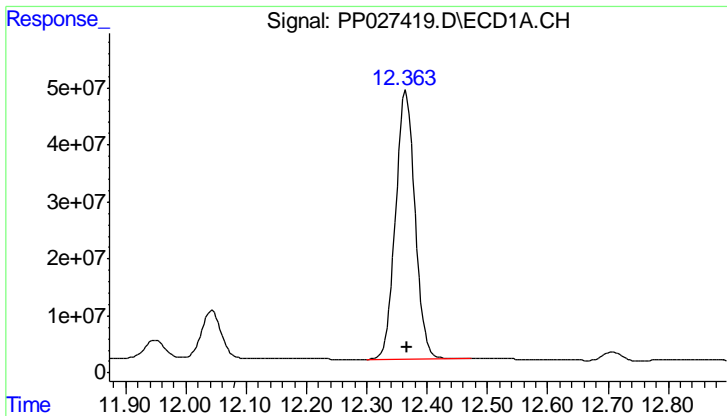
#4 2,4-DCAA

R.T.: 12.043 min  
 Delta R.T.: -0.002 min  
 Response: 189886853  
 Conc: 765.21 ng/ml



#4 2,4-DCAA

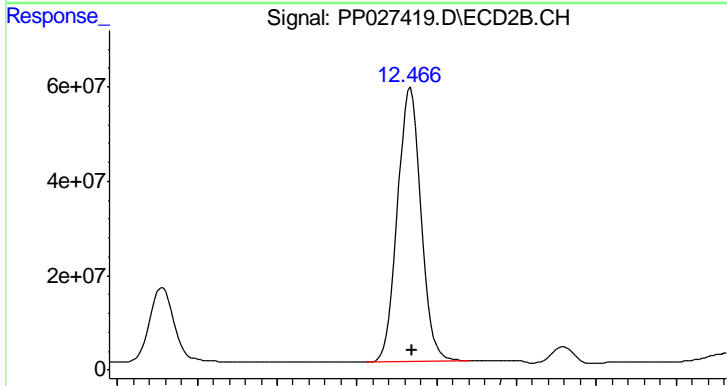
R.T.: 12.156 min  
 Delta R.T.: 0.000 min  
 Response: 336911544  
 Conc: 745.03 ng/ml



#5 DICAMBA

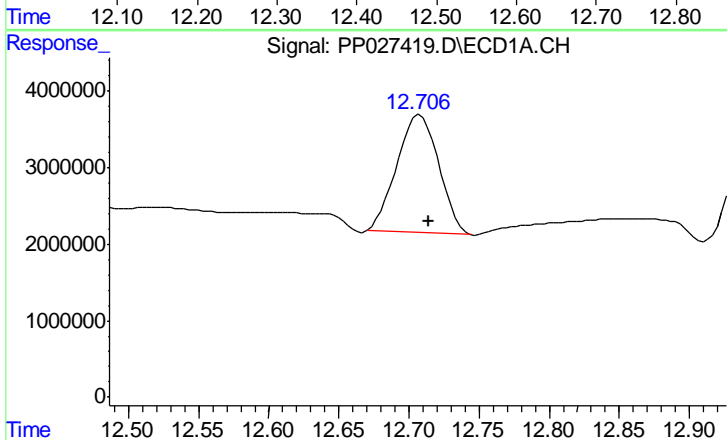
R.T.: 12.365 min  
 Delta R.T.: -0.002 min  
 Response: 1052157545  
 Conc: 682.72 ng/ml

Instrument :  
 ECD\_P  
 ClientSampleId :  
 HSTDCCC750



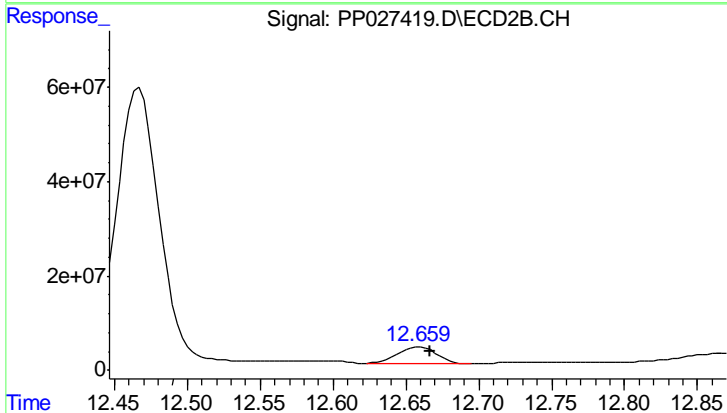
#5 DICAMBA

R.T.: 12.467 min  
 Delta R.T.: -0.002 min  
 Response: 1190947297  
 Conc: 689.46 ng/ml



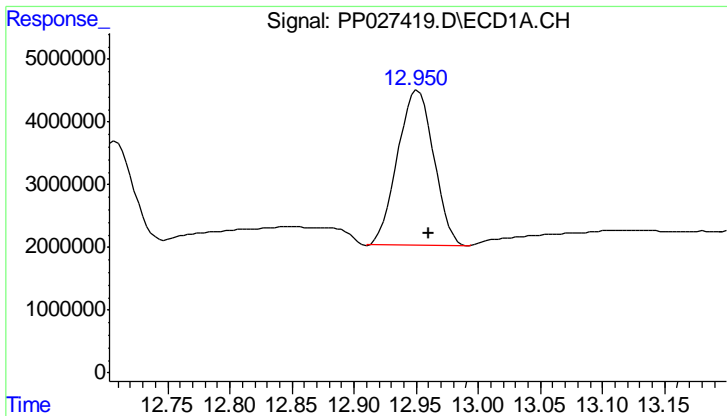
#6 MCPP

R.T.: 12.708 min  
 Delta R.T.: -0.006 min  
 Response: 31965842  
 Conc: 73.68 ug/ml



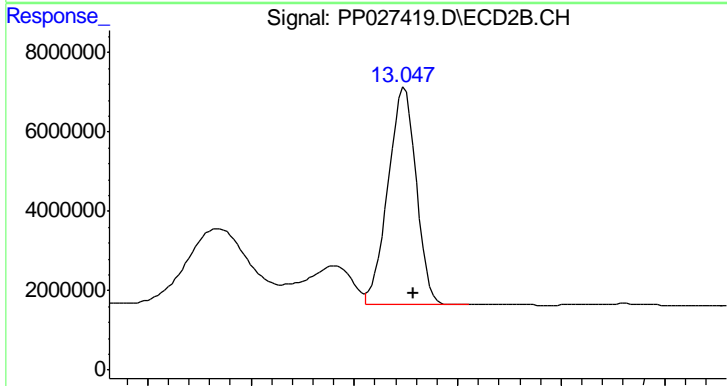
#6 MCPP

R.T.: 12.660 min  
 Delta R.T.: -0.006 min  
 Response: 64954307  
 Conc: 79.13 ug/ml

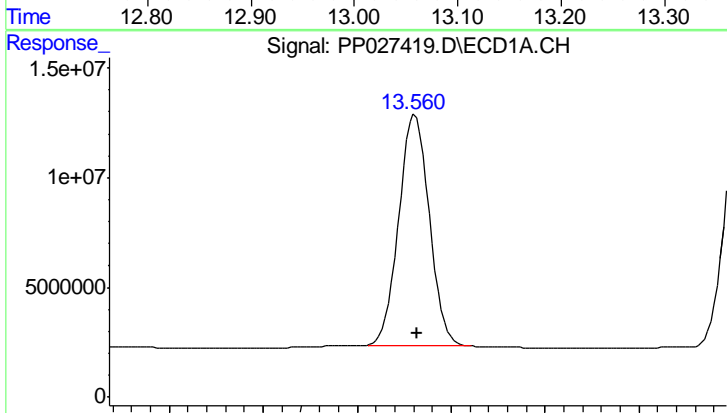


#7 MCPA  
R.T.: 12.951 min  
Delta R.T.: -0.009 min  
Response: 50044883  
Conc: 68.94 ug/ml

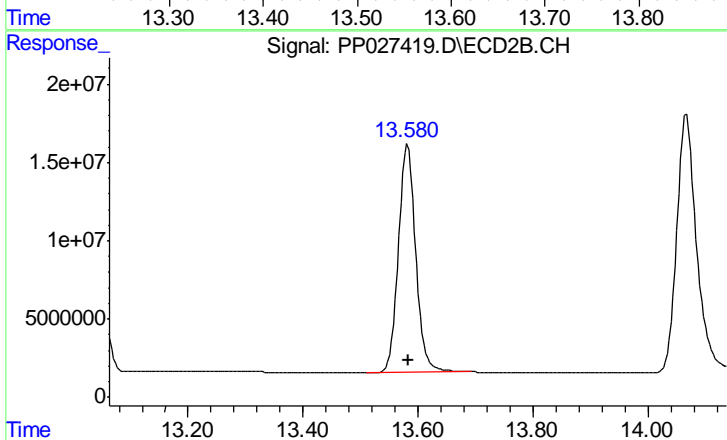
Instrument :  
ECD\_P  
ClientSampleId :  
HSTDCCC750



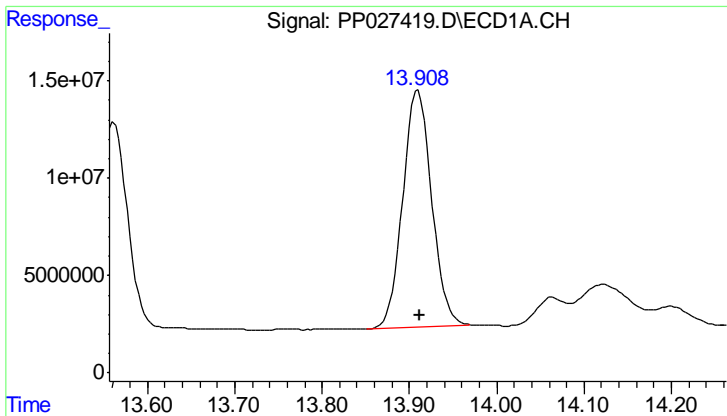
#7 MCPA  
R.T.: 13.049 min  
Delta R.T.: -0.009 min  
Response: 104041641  
Conc: 79.63 ug/ml



#8 DICHLORPROP  
R.T.: 13.562 min  
Delta R.T.: -0.002 min  
Response: 238059219  
Conc: 732.57 ng/ml



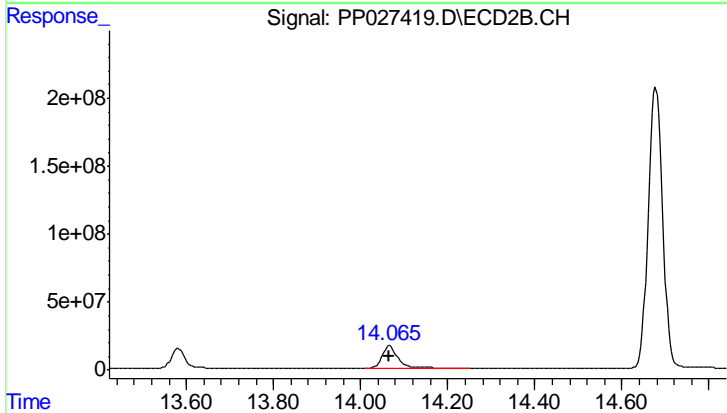
#8 DICHLORPROP  
R.T.: 13.581 min  
Delta R.T.: -0.001 min  
Response: 304146466  
Conc: 713.05 ng/ml



#9 2,4-D

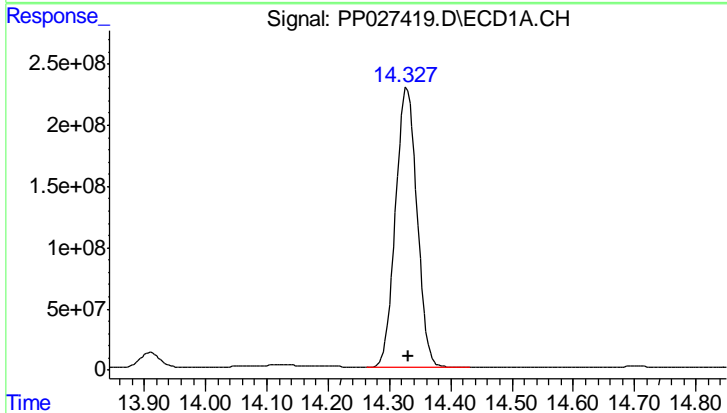
R.T.: 13.910 min  
 Delta R.T.: -0.001 min  
 Response: 278796092  
 Conc: 744.43 ng/ml

Instrument :  
 ECD\_P  
 ClientSampleId :  
 HSTDCCC750



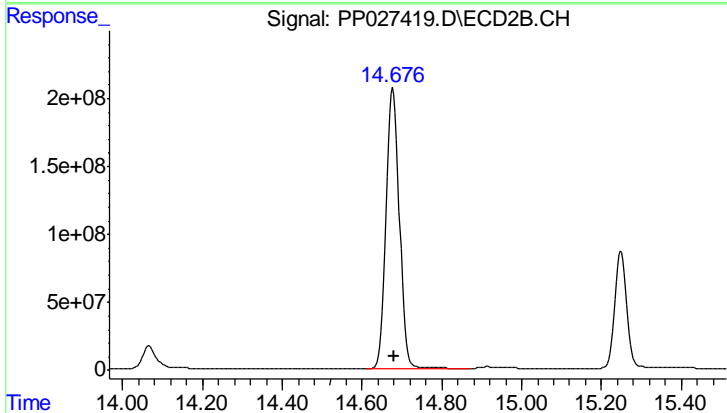
#9 2,4-D

R.T.: 14.067 min  
 Delta R.T.: 0.000 min  
 Response: 401084554  
 Conc: 735.68 ng/ml



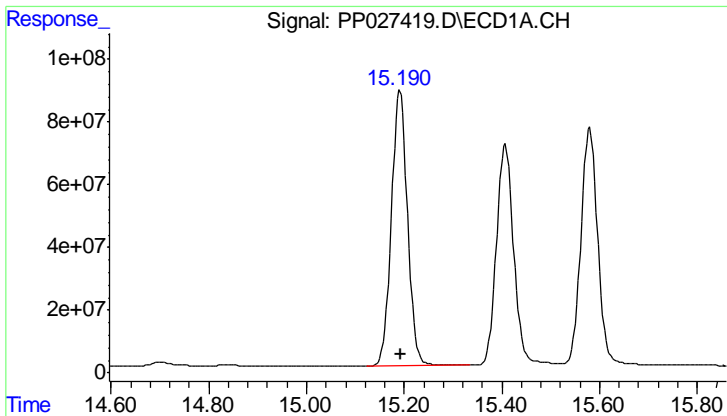
#10 Pentachlorophenol

R.T.: 14.329 min  
 Delta R.T.: -0.002 min  
 Response: 5551741275  
 Conc: 689.56 ng/ml



#10 Pentachlorophenol

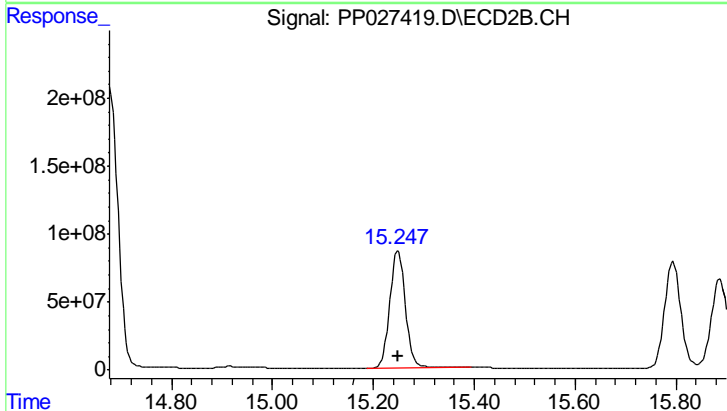
R.T.: 14.678 min  
 Delta R.T.: -0.002 min  
 Response: 4751004743  
 Conc: 688.92 ng/ml



#11 2,4,5-TP (SILVEX)

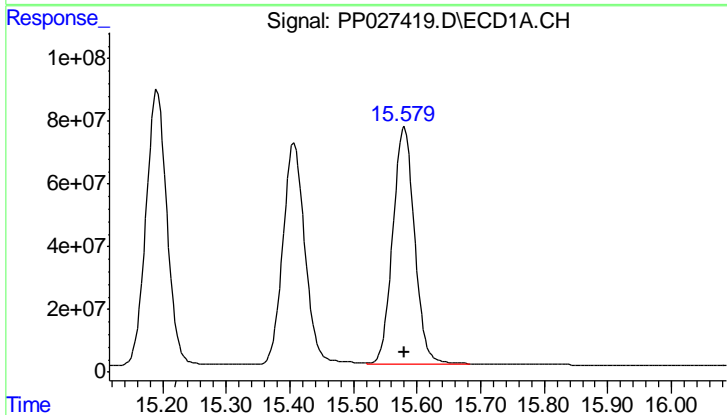
R.T.: 15.192 min  
 Delta R.T.: -0.001 min  
 Response: 2023298845  
 Conc: 693.44 ng/ml

Instrument :  
 ECD\_P  
 ClientSampleId :  
 HSTDCCC750



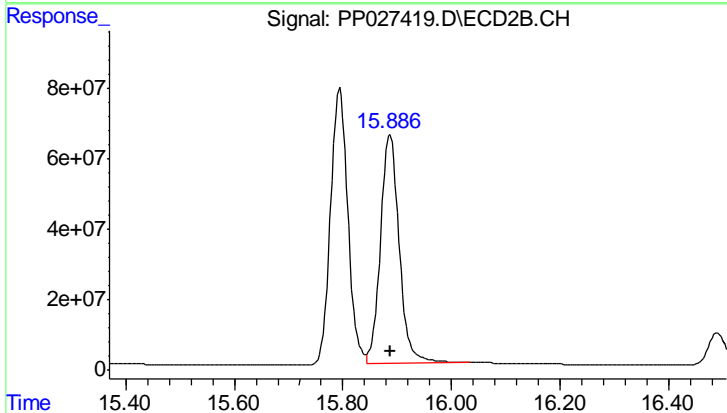
#11 2,4,5-TP (SILVEX)

R.T.: 15.249 min  
 Delta R.T.: 0.000 min  
 Response: 1855545860  
 Conc: 712.90 ng/ml



#12 2,4,5-T

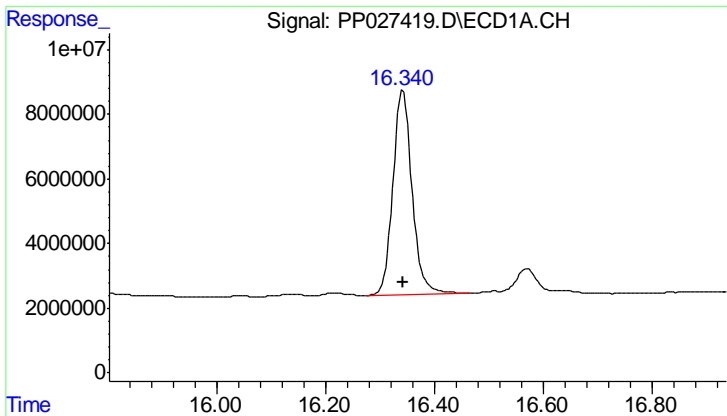
R.T.: 15.580 min  
 Delta R.T.: 0.000 min  
 Response: 1785298661  
 Conc: 728.49 ng/ml



#12 2,4,5-T

R.T.: 15.887 min  
 Delta R.T.: 0.000 min  
 Response: 1566802403  
 Conc: 761.52 ng/ml

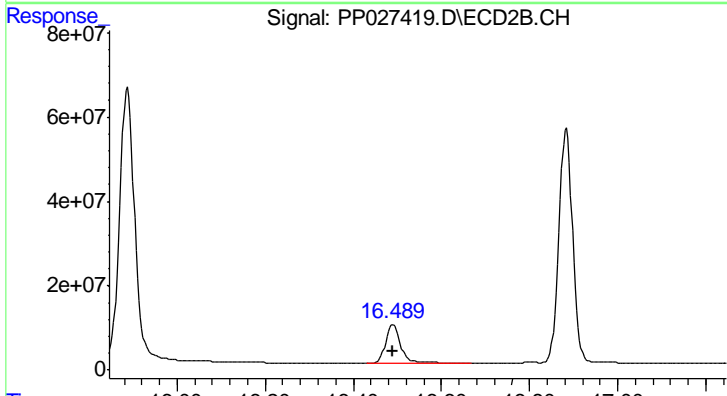




#13 2,4-DB

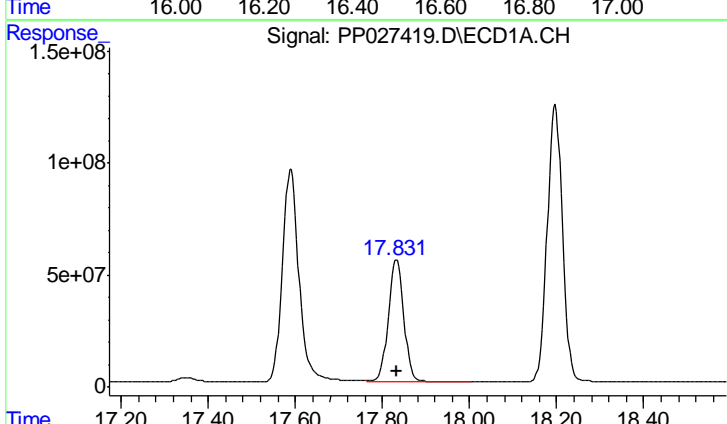
R.T.: 16.342 min  
 Delta R.T.: 0.000 min  
 Response: 154051510  
 Conc: 795.01 ng/ml

Instrument :  
 ECD\_P  
 ClientSampleId :  
 HSTDCCC750



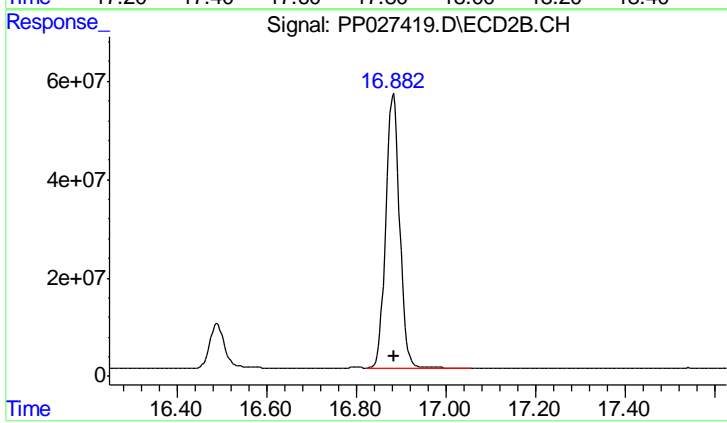
#13 2,4-DB

R.T.: 16.490 min  
 Delta R.T.: 0.000 min  
 Response: 211756824  
 Conc: 809.84 ng/ml



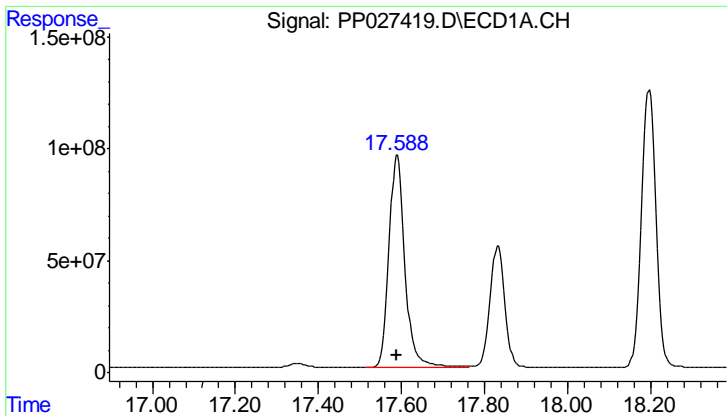
#14 DINOSEB

R.T.: 17.833 min  
 Delta R.T.: 0.000 min  
 Response: 1349891150  
 Conc: 656.77 ng/ml



#14 DINOSEB

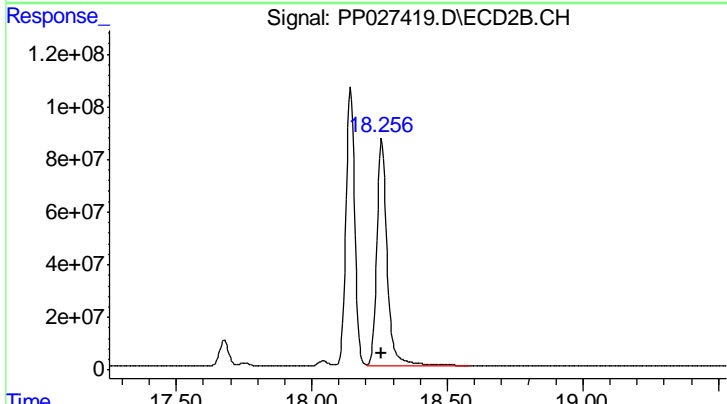
R.T.: 16.883 min  
 Delta R.T.: 0.000 min  
 Response: 1201879660  
 Conc: 655.20 ng/ml



#15 Picloram

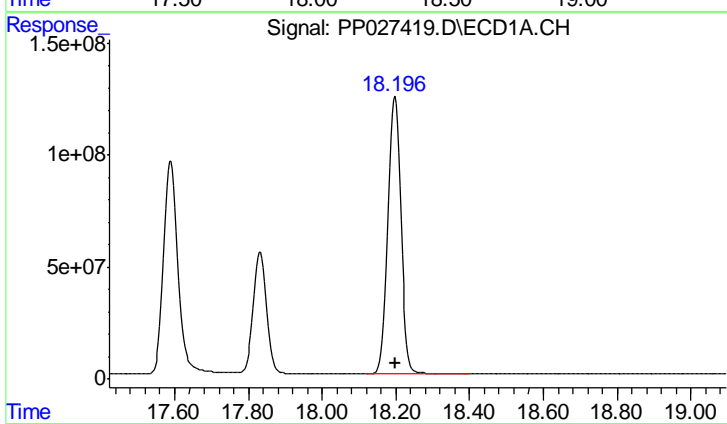
R.T.: 17.590 min  
 Delta R.T.: 0.000 min  
 Response: 2539604627  
 Conc: 781.53 ng/ml

Instrument :  
 ECD\_P  
 ClientSampleId :  
 HSTDCCC750



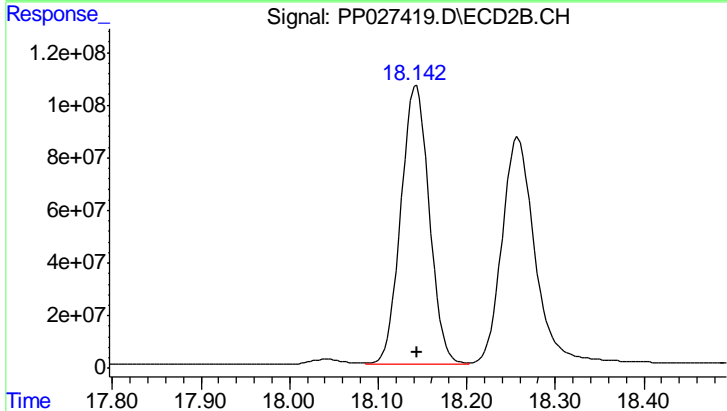
#15 Picloram

R.T.: 18.258 min  
 Delta R.T.: 0.000 min  
 Response: 2280962275  
 Conc: 824.09 ng/ml



#16 DCPA

R.T.: 18.197 min  
 Delta R.T.: 0.000 min  
 Response: 3025916512  
 Conc: 716.12 ng/ml



#16 DCPA

R.T.: 18.143 min  
 Delta R.T.: 0.000 min  
 Response: 2362497206  
 Conc: 710.35 ng/ml