

Data Path : Z:\pestpcbsrv\HPCHEM1\ECD_P\Data\PP091823\
 Data File : PP059917.D
 Signal(s) : Signal #1: ECD1A.ch Signal #2: ECD2B.ch
 Acq On : 19 Sep 2023 03:40
 Operator : YP\AJ
 Sample : 04453-02
 Misc :
 ALS Vial : 36 Sample Multiplier: 1

Instrument :
 ECD_P
 ClientSampleId :

Integration File signal 1: autoint1.e
 Integration File signal 2: autoint2.e
 Quant Time: Sep 19 07:26:38 2023
 Quant Method : Z:\pestpcbsrv\HPCHEM1\ECD_P\methods\PP091823.M
 Quant Title : GC EXTRACTABLES
 QLast Update : Tue Sep 19 07:23:22 2023
 Response via : Initial Calibration
 Integrator: ChemStation

Volume Inj. : 2 µl
 Signal #1 Phase : ZB-MR2 Signal #2 Phase: ZB-MR2
 Signal #1 Info : 30Mx0.32mmx 0.50µ Signal #2 Info : 30M x 0.32mm x 0.25µm

Compound	RT#1	RT#2	Resp#1	Resp#2	ng/ml	ng/ml

System Monitoring Compounds						
1) SA Tetrachlo...	4.508	3.667	44611037	35324953	21.445	21.687
2) SA Decachlor...	10.431	8.750	30260885	27848131	19.839	18.392
Target Compounds						
3) L1 AR-1016-1	5.726f	4.787	531138	149282	7.872	2.483 #
4) L1 AR-1016-2	5.726	4.798	531138	121797	5.552	1.467 #
5) L1 AR-1016-3	0.000	4.976	0	20768	N.D.	0.463 #
6) L1 AR-1016-4	0.000	5.013	0	27621	N.D.	0.783 #
7) L1 AR-1016-5	0.000	5.225	0	63395	N.D.	1.363 #
8) L2 AR-1221-1	0.000	3.893	0	318165	N.D.	14.485 #
9) L2 AR-1221-2	4.819	3.971	839912	515941	42.672	33.418
12) L3 AR-1232-2	0.000	4.798	0	121797	N.D.	3.303 #
13) L3 AR-1232-3	5.726	4.966	531138	12647	12.294	0.632 #
14) L3 AR-1232-4	0.000	5.053	0	36717	N.D.	2.010 #
15) L3 AR-1232-5	0.000	5.225	0	63395	N.D.	3.162 #
16) L4 AR-1242-1	5.726f	4.787	531138	149282	8.893	2.835 #
17) L4 AR-1242-2	5.726	4.798	531138	121797	6.320	1.690 #
18) L4 AR-1242-3	0.000	4.976	0	20768	N.D.	0.531 #
19) L4 AR-1242-4	0.000	5.060	0	31310	N.D.	0.799 #
20) L4 AR-1242-5	6.604f	5.589	1320000	2003771	28.872	41.417 #
21) L5 AR-1248-1	5.726f	4.787	531138	149282	11.883	3.821 #
22) L5 AR-1248-2	0.000	5.013	0	27621	N.D.	0.510 #
23) L5 AR-1248-3	0.000	5.053	0	36717	N.D.	0.645 #
24) L5 AR-1248-4	6.604	5.225	1320000	63395	17.067	0.944 #
25) L5 AR-1248-5	6.604f	5.625	1320000	109242	17.544	1.656 #
26) L6 AR-1254-1	6.560	5.589	1979802	2003771	24.798	19.966
27) L6 AR-1254-2	6.792	5.733	1585926	864784	13.241	9.954
28) L6 AR-1254-3	7.162	6.141	2513211	1496101	20.688	10.656 #
29) L6 AR-1254-4	7.448	6.374	663457	111009	7.460	1.319 #
30) L6 AR-1254-5	7.889f	6.794	34800436	35821770	357.753	301.994
31) L7 AR-1260-1	7.325	6.276	1301877	1055259	14.443	11.333
32) L7 AR-1260-2	7.572	6.466	8664227	891227	84.457	8.129 #
33) L7 AR-1260-3	7.945	6.619	515949	586443	6.551	5.702
34) L7 AR-1260-4	8.176	7.094	606287	594156	6.765	7.134
35) L7 AR-1260-5	8.510	7.336	944278	2359173	5.533	12.262 #
36) L8 AR-1262-1	7.945	6.891	515949	445812	4.458	8.833 #
37) L8 AR-1262-2	8.510	7.094	944278	594156	4.717	5.259
38) L8 AR-1262-3	8.852	7.625	1280657	1502080	8.893	17.136 #
39) L8 AR-1262-4	8.920	7.687	1007192	1547965	8.870	9.479
40) L8 AR-1262-5	9.628	8.190	607681	308070	8.146	4.127 #
41) L9 AR-1268-1	8.852	7.625	1280657	1502080	5.107	5.769
42) L9 AR-1268-2	8.920f	7.687	1007192	1547965	4.389	6.696 #
43) L9 AR-1268-3	0.000	7.901	0	304967	N.D.	1.494 #

Data Path : Z:\pestpcbsrv\HPCHEM1\ECD_P\Data\PP091823\
 Data File : PP059917.D
 Signal(s) : Signal #1: ECD1A.ch Signal #2: ECD2B.ch
 Acq On : 19 Sep 2023 03:40
 Operator : YP\AJ
 Sample : 04453-02
 Misc :
 ALS Vial : 36 Sample Multiplier: 1

Instrument :
 ECD_P
 ClientSampleId :

Integration File signal 1: autoint1.e
 Integration File signal 2: autoint2.e
 Quant Time: Sep 19 07:26:38 2023
 Quant Method : Z:\pestpcbsrv\HPCHEM1\ECD_P\methods\PP091823.M
 Quant Title : GC EXTRACTABLES
 QLast Update : Tue Sep 19 07:23:22 2023
 Response via : Initial Calibration
 Integrator: ChemStation

Volume Inj. : 2 µl
 Signal #1 Phase : ZB-MR1 Signal #2 Phase: ZB-MR2
 Signal #1 Info : 30Mx0.32mmx 0.50µ Signal #2 Info : 30M x 0.32mm x 0.25µm

	Compound	RT#1	RT#2	Resp#1	Resp#2	ng/ml	ng/ml
44)	L9 AR-1268-4	9.628	8.190	607681	308070	7.337	3.815 #
45)	L9 AR-1268-5	10.068	8.490	665101	315982	1.099	0.500 #

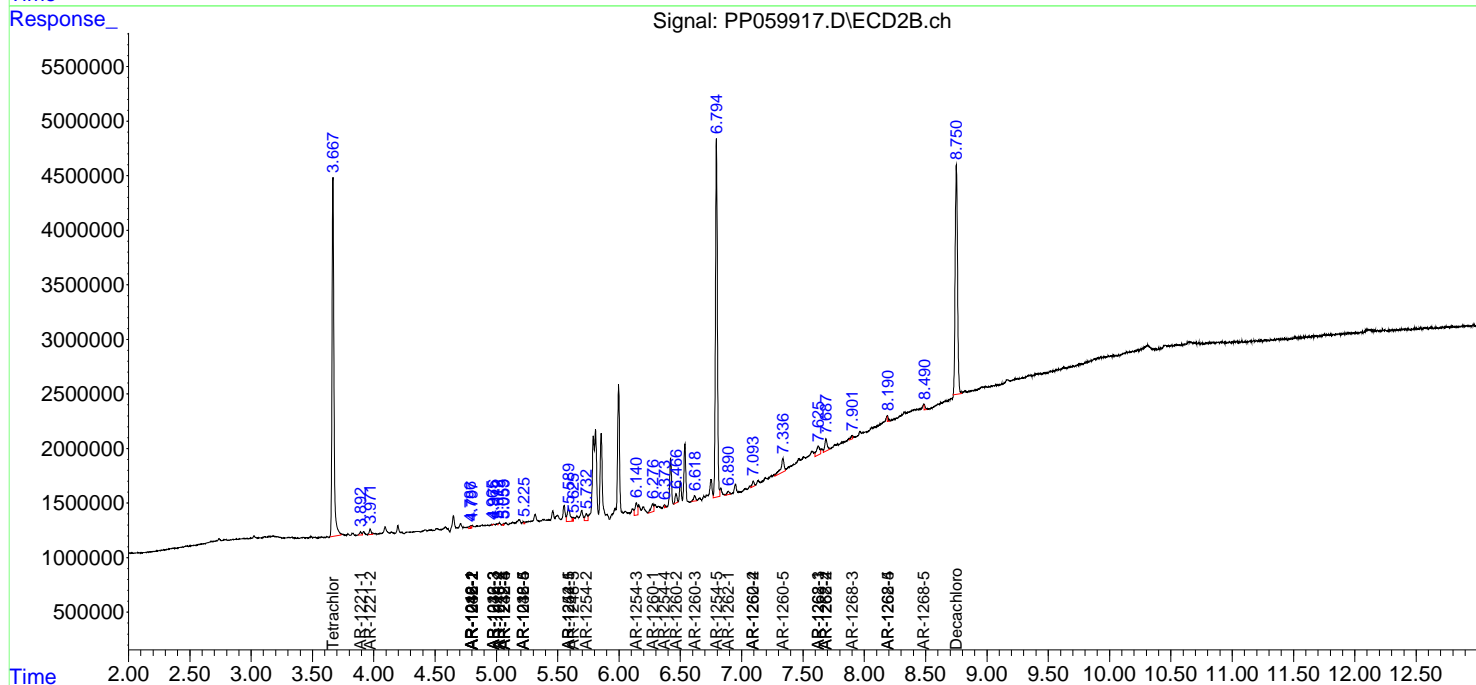
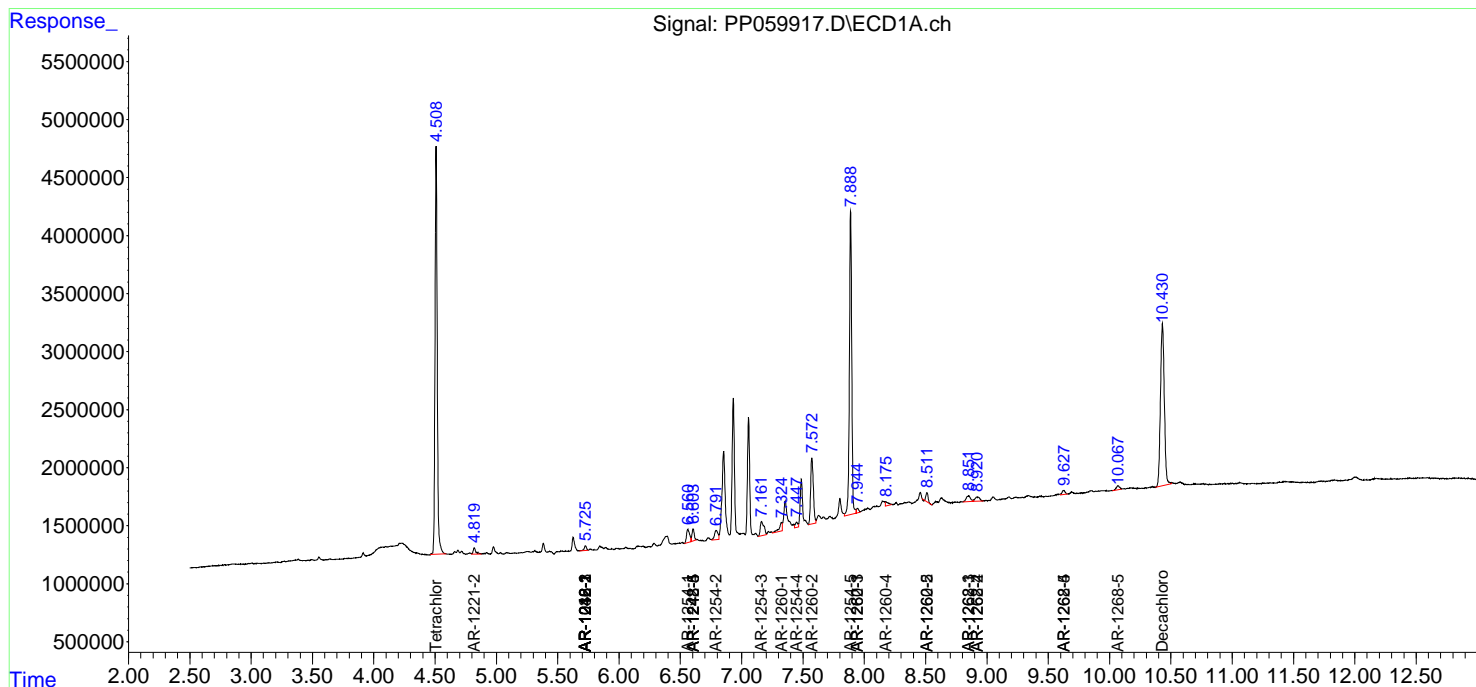
(f)=RT Delta > 1/2 Window (#)=Amounts differ by > 25% (m)=manual int.

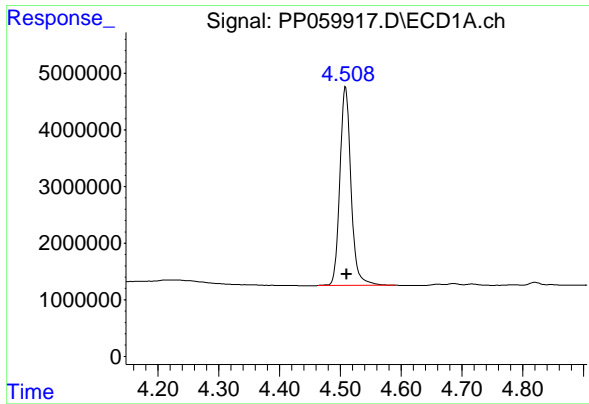
Data Path : Z:\pestpcbsrv\HPCHEM1\ECD_P\Data\PP091823\
 Data File : PP059917.D
 Signal(s) : Signal #1: ECD1A.ch Signal #2: ECD2B.ch
 Acq On : 19 Sep 2023 03:40
 Operator : YP\AJ
 Sample : 04453-02
 Misc :
 ALS Vial : 36 Sample Multiplier: 1

Instrument :
 ECD_P
 ClientSampleId :

Integration File signal 1: autoint1.e
 Integration File signal 2: autoint2.e
 Quant Time: Sep 19 07:26:38 2023
 Quant Method : Z:\pestpcbsrv\HPCHEM1\ECD_P\methods\PP091823.M
 Quant Title : GC EXTRACTABLES
 QLast Update : Tue Sep 19 07:23:22 2023
 Response via : Initial Calibration
 Integrator: ChemStation

Volume Inj. : 2 µl
 Signal #1 Phase : ZB-MR1 Signal #2 Phase: ZB-MR2
 Signal #1 Info : 30Mx0.32mmx 0.50µm Signal #2 Info : 30M x 0.32mm x 0.25µm

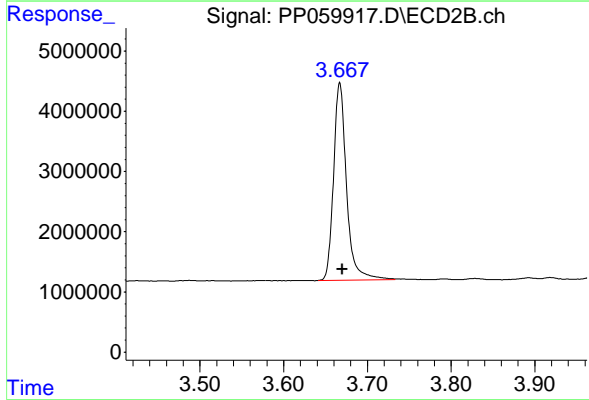




#1 Tetrachloro-m-xylene

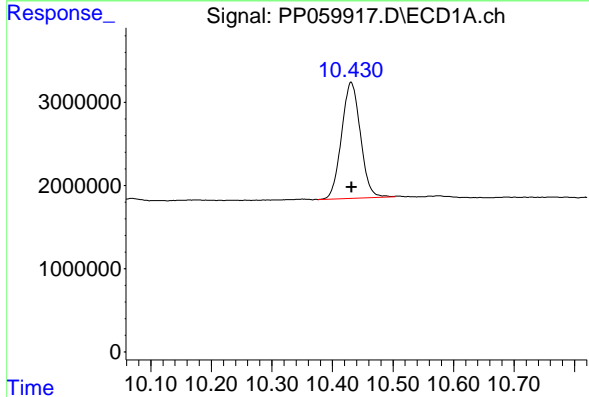
R.T.: 4.508 min
 Delta R.T.: -0.002 min
 Response: 44611037
 Conc: 21.44 ng/ml

Instrument :
 ECD_P
 ClientSampleId :



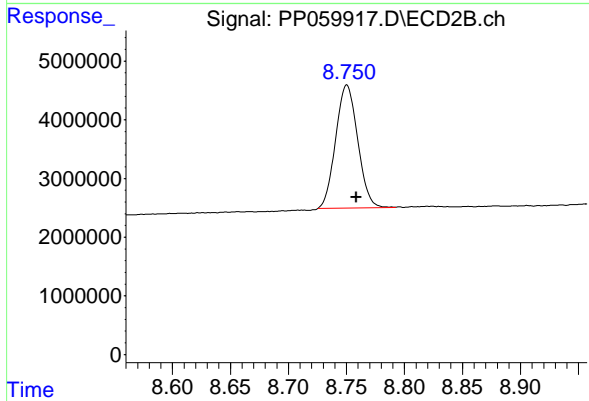
#1 Tetrachloro-m-xylene

R.T.: 3.667 min
 Delta R.T.: -0.003 min
 Response: 35324953
 Conc: 21.69 ng/ml



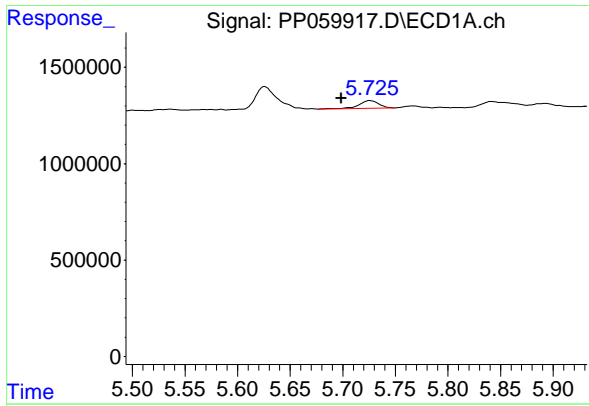
#2 Decachlorobiphenyl

R.T.: 10.431 min
 Delta R.T.: 0.000 min
 Response: 30260885
 Conc: 19.84 ng/ml



#2 Decachlorobiphenyl

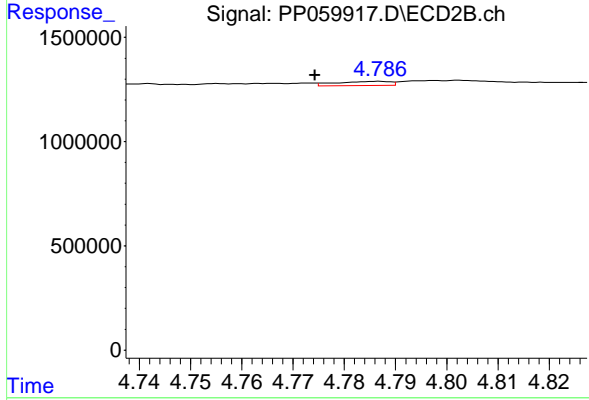
R.T.: 8.750 min
 Delta R.T.: -0.008 min
 Response: 27848131
 Conc: 18.39 ng/ml



#3 AR-1016-1

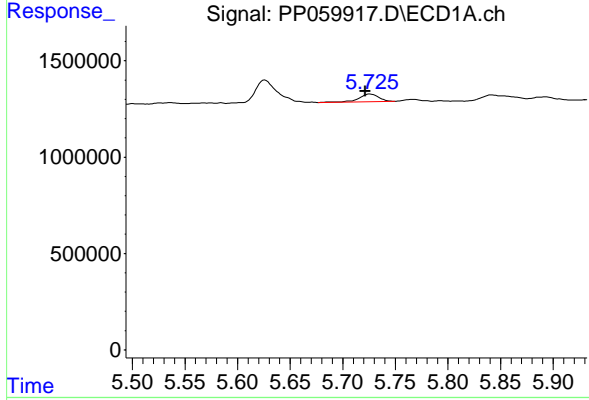
R.T.: 5.726 min
 Delta R.T.: 0.027 min
 Response: 531138
 Conc: 7.87 ng/ml

Instrument :
 ECD_P
 ClientSampleId :



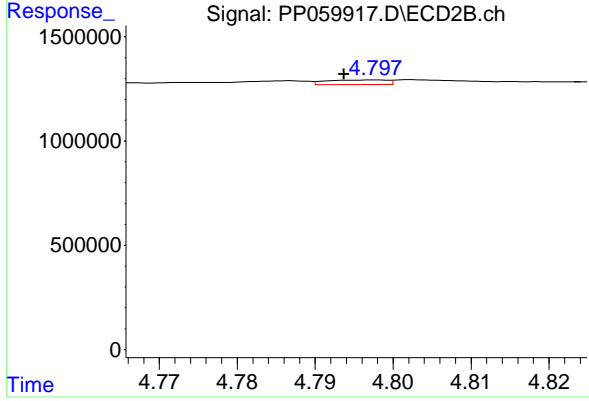
#3 AR-1016-1

R.T.: 4.787 min
 Delta R.T.: 0.013 min
 Response: 149282
 Conc: 2.48 ng/ml



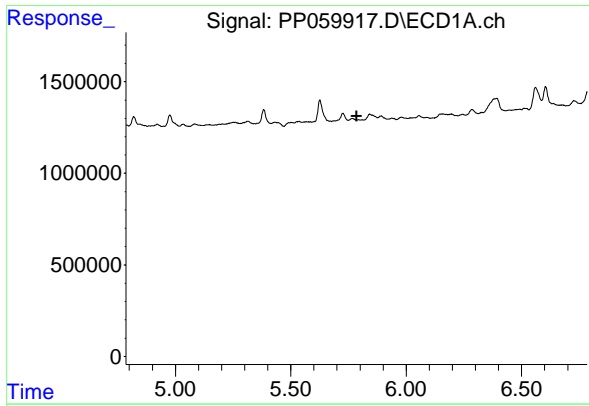
#4 AR-1016-2

R.T.: 5.726 min
 Delta R.T.: 0.005 min
 Response: 531138
 Conc: 5.55 ng/ml



#4 AR-1016-2

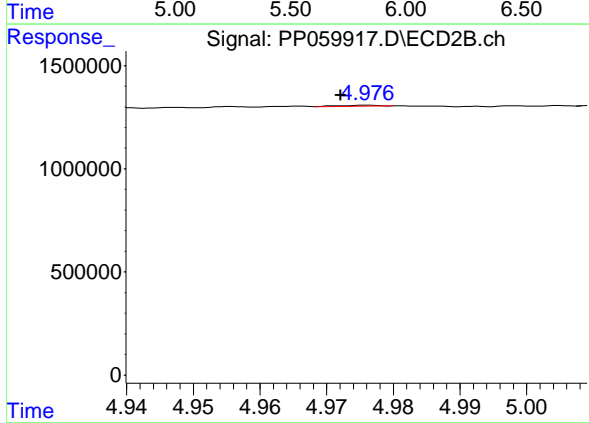
R.T.: 4.798 min
 Delta R.T.: 0.004 min
 Response: 121797
 Conc: 1.47 ng/ml



#5 AR-1016-3

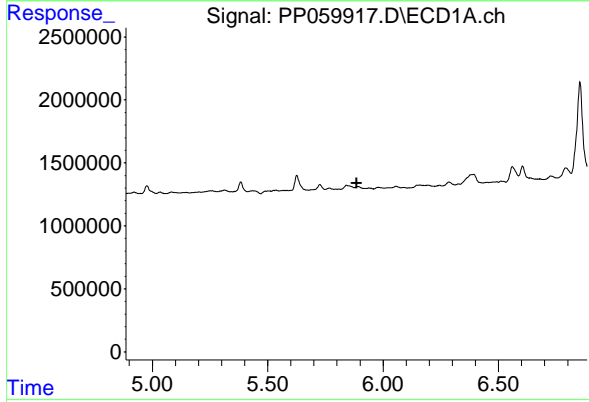
R.T.: 0.000 min
 Exp R.T.: 5.785 min
 Response: 0
 Conc: N.D.

Instrument :
 ECD_P
 ClientSampleId :



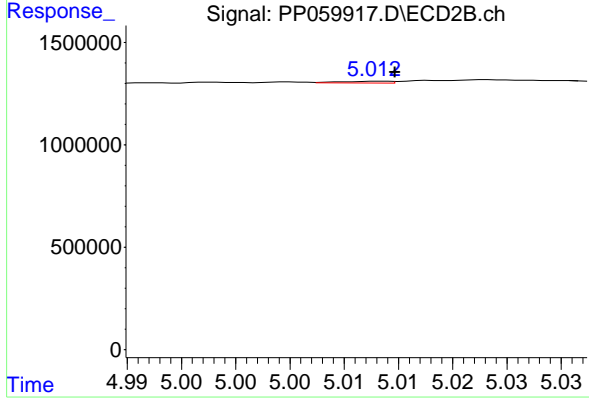
#5 AR-1016-3

R.T.: 4.976 min
 Delta R.T.: 0.004 min
 Response: 20768
 Conc: 0.46 ng/ml



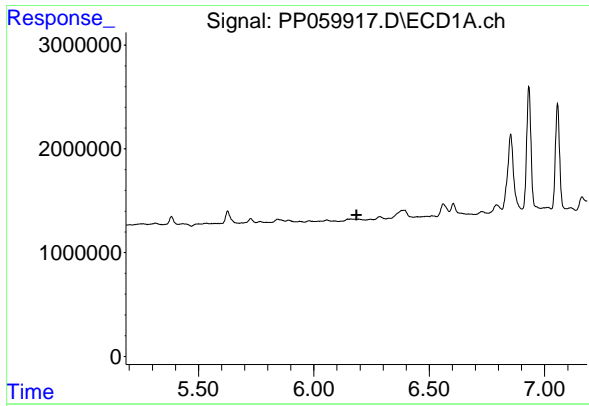
#6 AR-1016-4

R.T.: 0.000 min
 Exp R.T.: 5.885 min
 Response: 0
 Conc: N.D.



#6 AR-1016-4

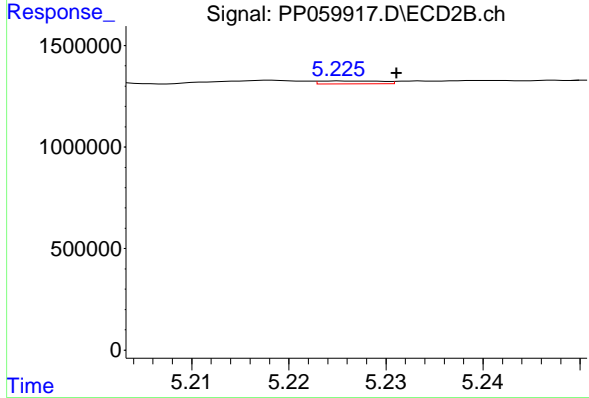
R.T.: 5.013 min
 Delta R.T.: -0.001 min
 Response: 27621
 Conc: 0.78 ng/ml



#7 AR-1016-5

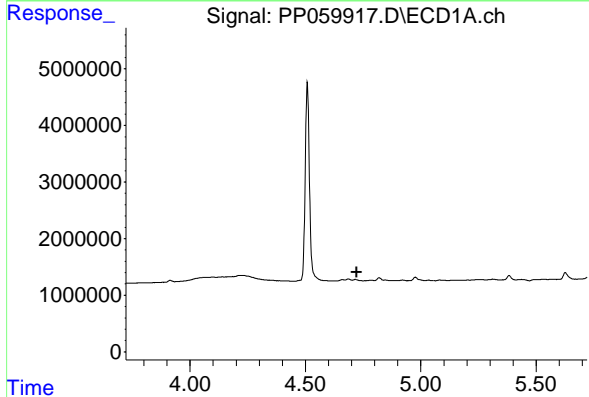
R.T.: 0.000 min
 Exp R.T.: 6.184 min
 Response: 0
 Conc: N.D.

Instrument :
 ECD_P
 ClientSampleId :



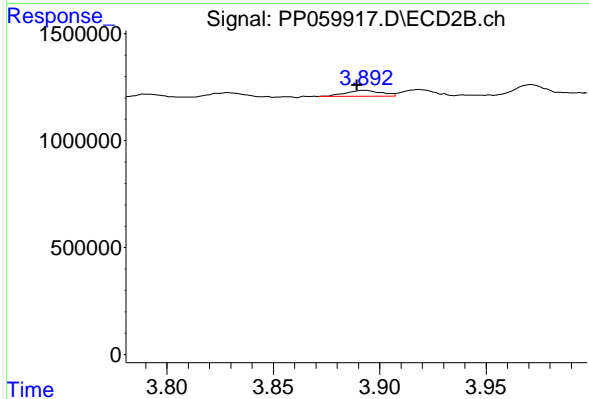
#7 AR-1016-5

R.T.: 5.225 min
 Delta R.T.: -0.006 min
 Response: 63395
 Conc: 1.36 ng/ml



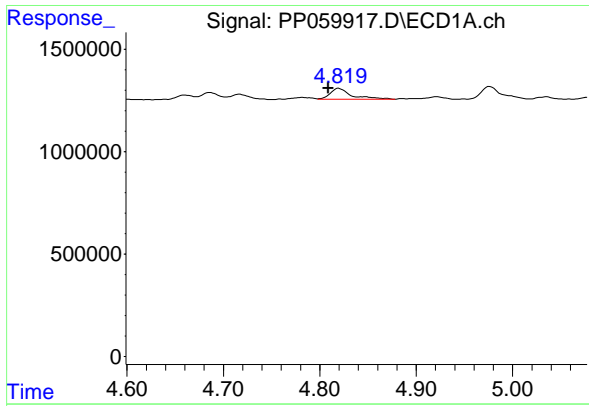
#8 AR-1221-1

R.T.: 0.000 min
 Exp R.T.: 4.721 min
 Response: 0
 Conc: N.D.



#8 AR-1221-1

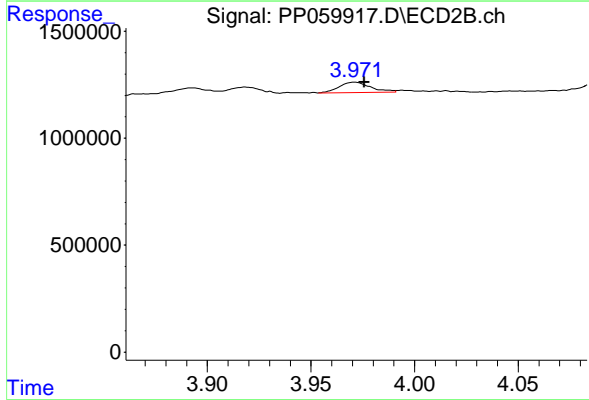
R.T.: 3.893 min
 Delta R.T.: 0.004 min
 Response: 318165
 Conc: 14.49 ng/ml



#9 AR-1221-2

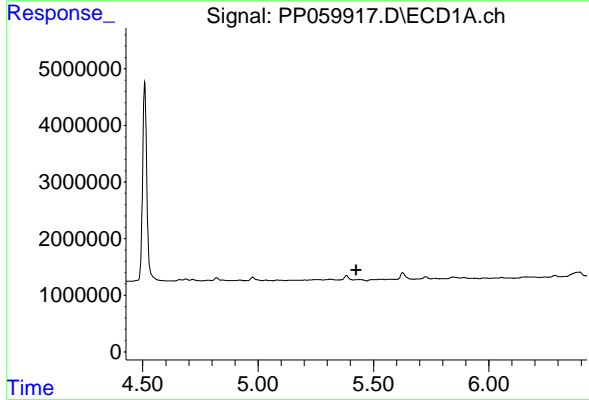
R.T.: 4.819 min
 Delta R.T.: 0.011 min
 Response: 839912
 Conc: 42.67 ng/ml

Instrument :
 ECD_P
 ClientSampleId :



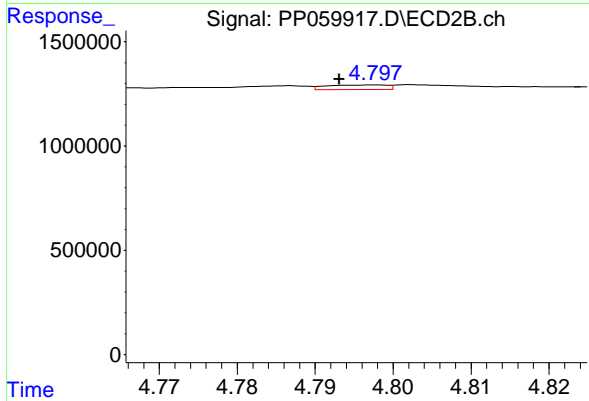
#9 AR-1221-2

R.T.: 3.971 min
 Delta R.T.: -0.005 min
 Response: 515941
 Conc: 33.42 ng/ml



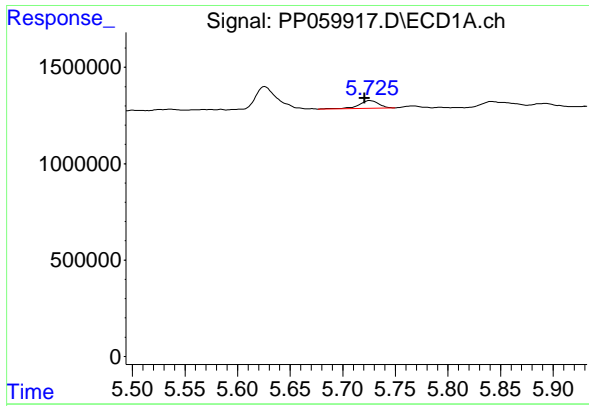
#12 AR-1232-2

R.T.: 0.000 min
 Exp R.T. : 5.426 min
 Response: 0
 Conc: N.D.



#12 AR-1232-2

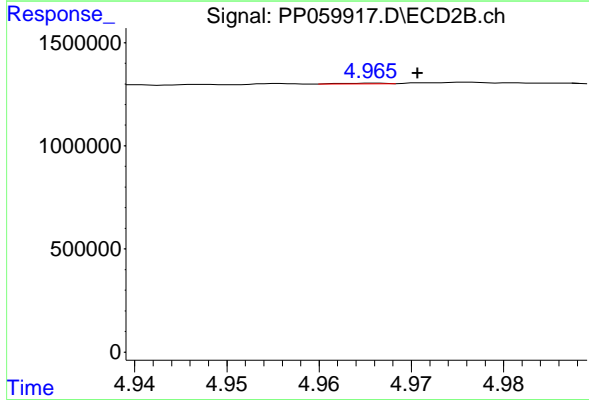
R.T.: 4.798 min
 Delta R.T.: 0.005 min
 Response: 121797
 Conc: 3.30 ng/ml



#13 AR-1232-3

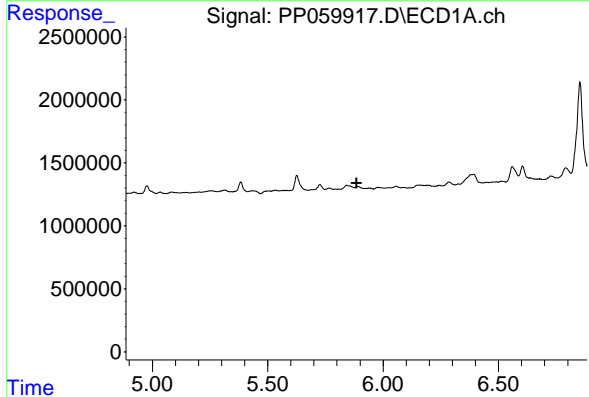
R.T.: 5.726 min
 Delta R.T.: 0.005 min
 Response: 531138
 Conc: 12.29 ng/ml

Instrument :
 ECD_P
 ClientSampleId :



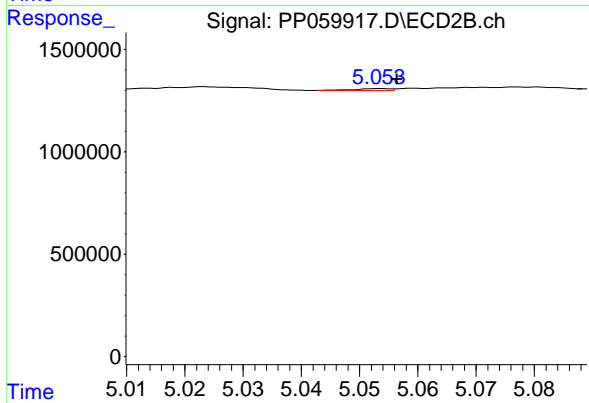
#13 AR-1232-3

R.T.: 4.966 min
 Delta R.T.: -0.005 min
 Response: 12647
 Conc: 0.63 ng/ml



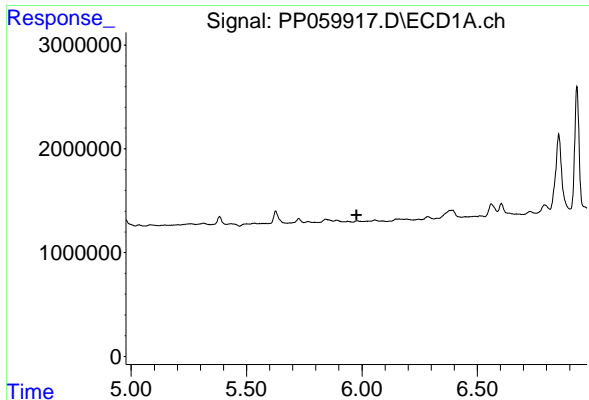
#14 AR-1232-4

R.T.: 0.000 min
 Exp R.T. : 5.884 min
 Response: 0
 Conc: N.D.



#14 AR-1232-4

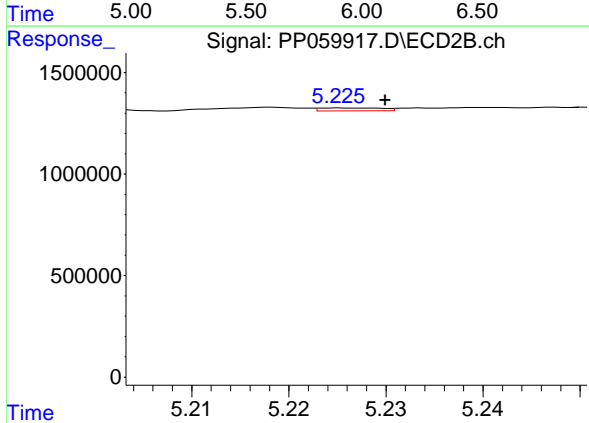
R.T.: 5.053 min
 Delta R.T.: -0.003 min
 Response: 36717
 Conc: 2.01 ng/ml



#15 AR-1232-5

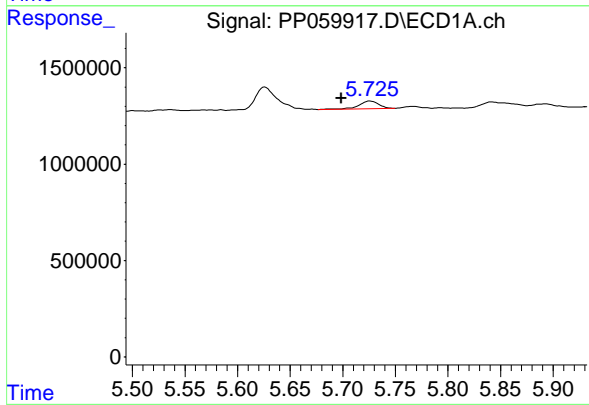
R.T.: 0.000 min
 Exp R.T.: 5.976 min
 Response: 0
 Conc: N.D.

Instrument :
 ECD_P
 ClientSampleId :



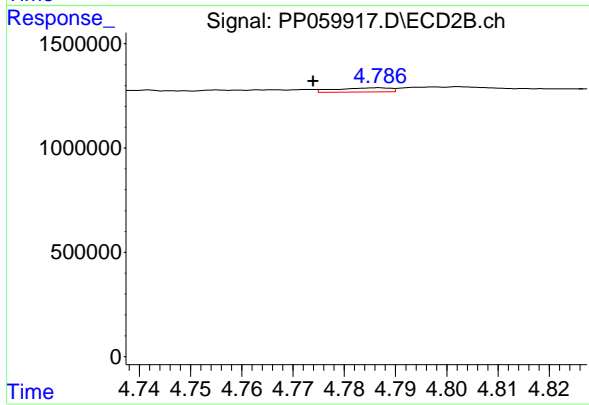
#15 AR-1232-5

R.T.: 5.225 min
 Delta R.T.: -0.005 min
 Response: 63395
 Conc: 3.16 ng/ml



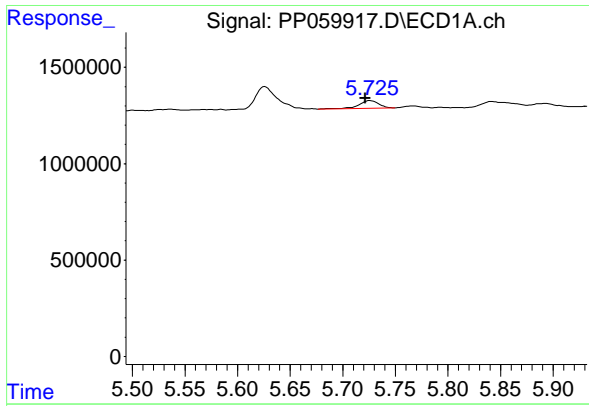
#16 AR-1242-1

R.T.: 5.726 min
 Delta R.T.: 0.027 min
 Response: 531138
 Conc: 8.89 ng/ml



#16 AR-1242-1

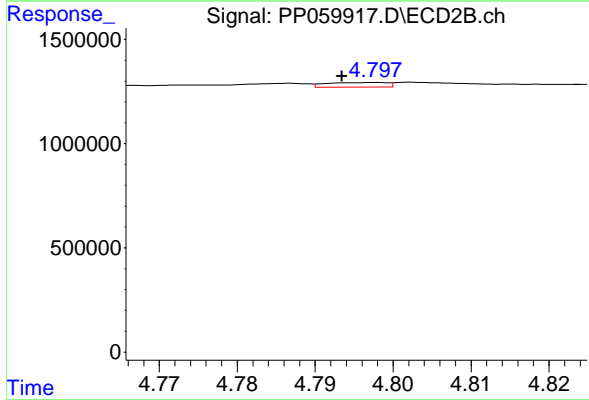
R.T.: 4.787 min
 Delta R.T.: 0.013 min
 Response: 149282
 Conc: 2.83 ng/ml



#17 AR-1242-2

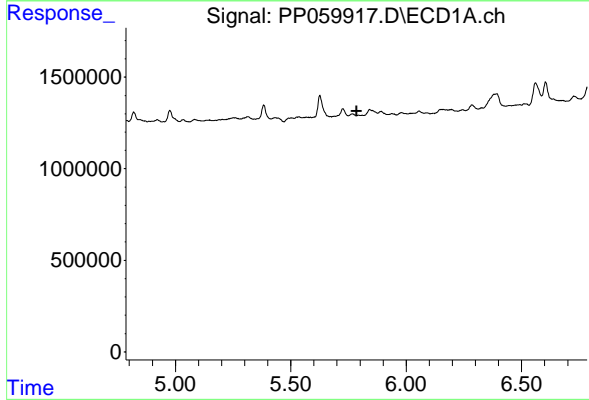
R.T.: 5.726 min
 Delta R.T.: 0.005 min
 Response: 531138
 Conc: 6.32 ng/ml

Instrument :
 ECD_P
 ClientSampleId :



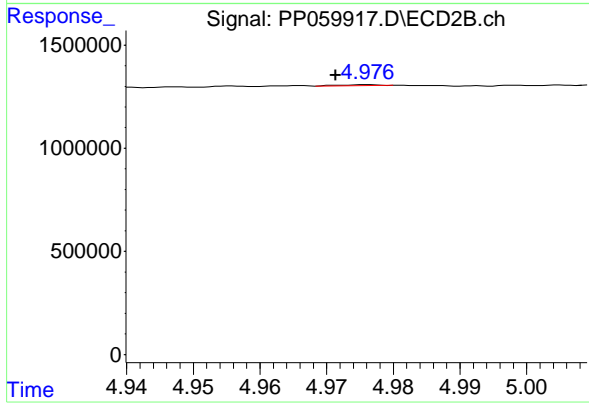
#17 AR-1242-2

R.T.: 4.798 min
 Delta R.T.: 0.005 min
 Response: 121797
 Conc: 1.69 ng/ml



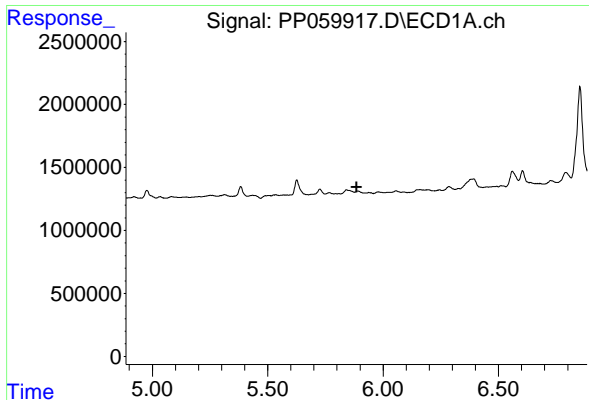
#18 AR-1242-3

R.T.: 0.000 min
 Exp R.T. : 5.785 min
 Response: 0
 Conc: N.D.



#18 AR-1242-3

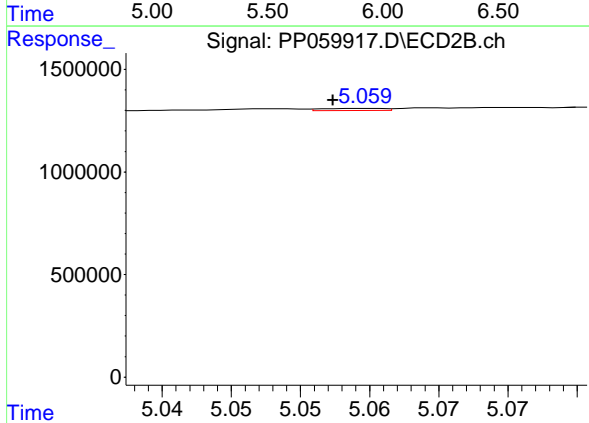
R.T.: 4.976 min
 Delta R.T.: 0.005 min
 Response: 20768
 Conc: 0.53 ng/ml



#19 AR-1242-4

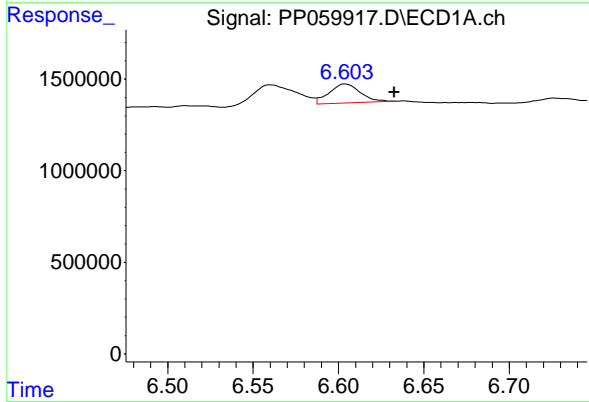
R.T.: 0.000 min
 Exp R.T.: 5.885 min
 Response: 0
 Conc: N.D.

Instrument : ECD_P
 ClientSampleId :



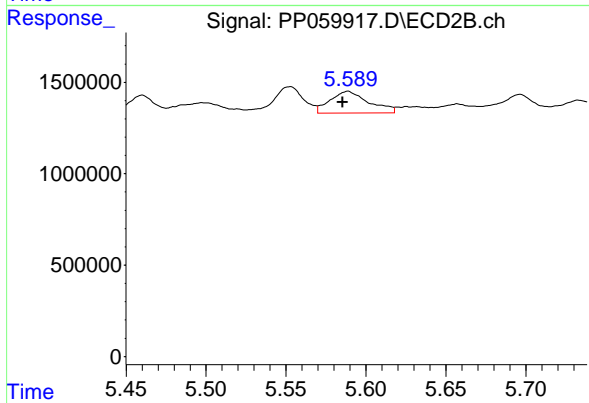
#19 AR-1242-4

R.T.: 5.060 min
 Delta R.T.: 0.002 min
 Response: 31310
 Conc: 0.80 ng/ml



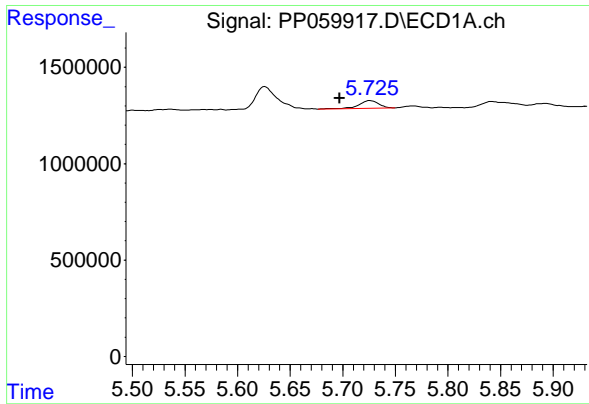
#20 AR-1242-5

R.T.: 6.604 min
 Delta R.T.: -0.029 min
 Response: 1320000
 Conc: 28.87 ng/ml



#20 AR-1242-5

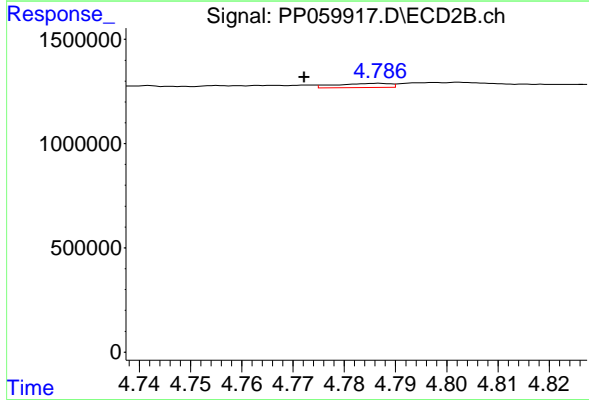
R.T.: 5.589 min
 Delta R.T.: 0.004 min
 Response: 2003771
 Conc: 41.42 ng/ml



#21 AR-1248-1

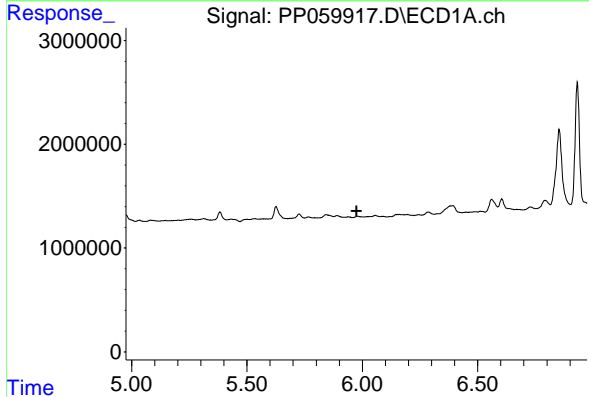
R.T.: 5.726 min
 Delta R.T.: 0.029 min
 Response: 531138
 Conc: 11.88 ng/ml

Instrument :
 ECD_P
 ClientSampleId :



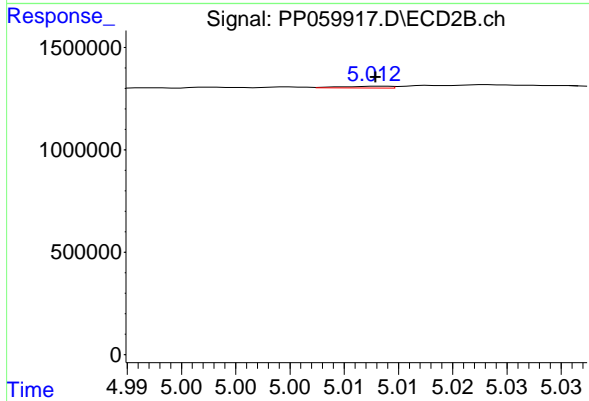
#21 AR-1248-1

R.T.: 4.787 min
 Delta R.T.: 0.015 min
 Response: 149282
 Conc: 3.82 ng/ml



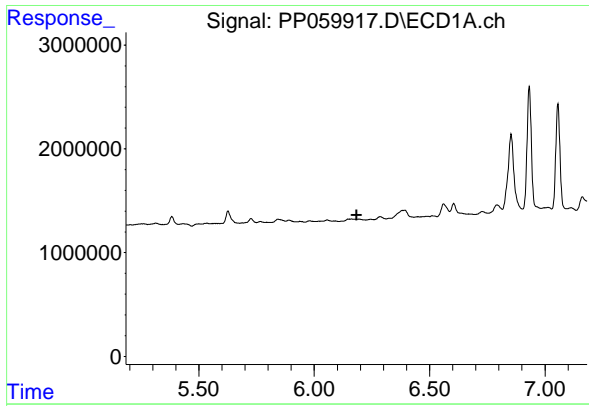
#22 AR-1248-2

R.T.: 0.000 min
 Exp R.T. : 5.975 min
 Response: 0
 Conc: N.D.



#22 AR-1248-2

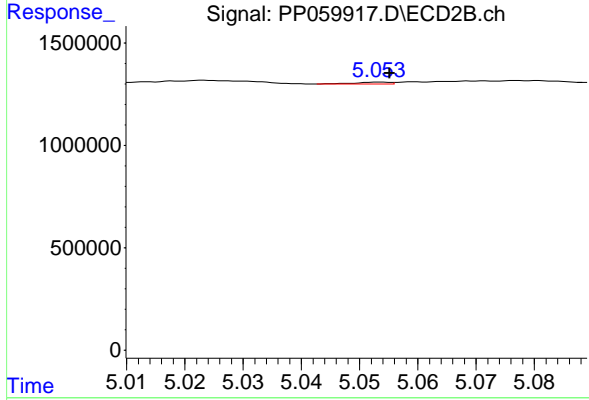
R.T.: 5.013 min
 Delta R.T.: 0.000 min
 Response: 27621
 Conc: 0.51 ng/ml



#23 AR-1248-3

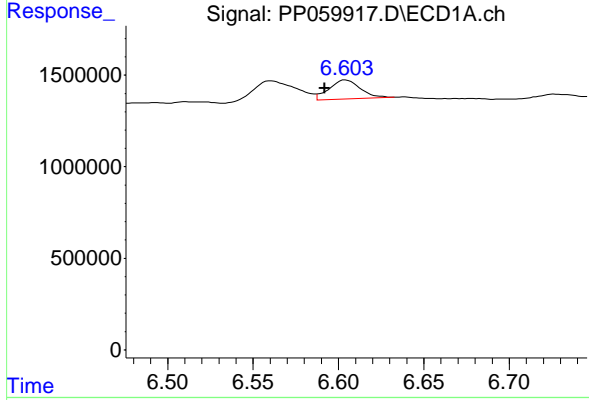
R.T.: 0.000 min
 Exp R.T.: 6.183 min
 Response: 0
 Conc: N.D.

Instrument :
 ECD_P
 ClientSampleId :



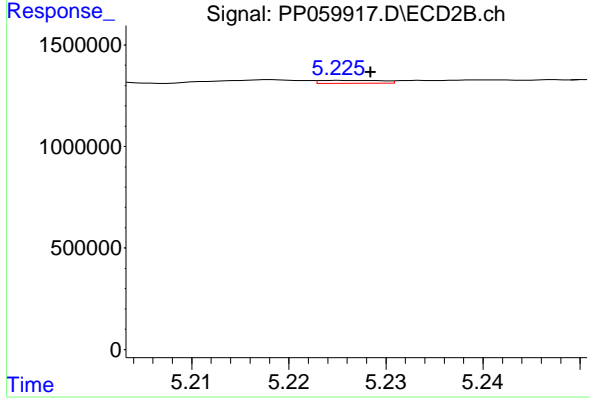
#23 AR-1248-3

R.T.: 5.053 min
 Delta R.T.: -0.002 min
 Response: 36717
 Conc: 0.65 ng/ml



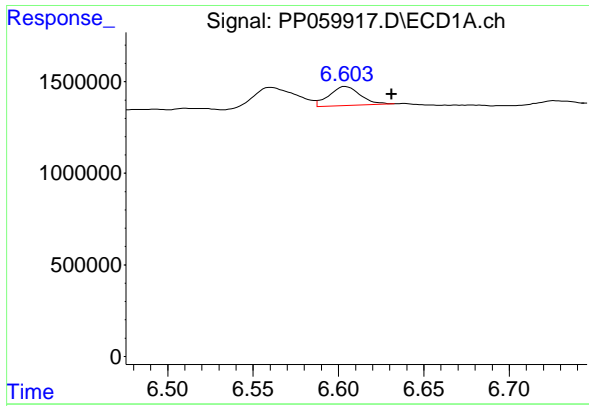
#24 AR-1248-4

R.T.: 6.604 min
 Delta R.T.: 0.012 min
 Response: 1320000
 Conc: 17.07 ng/ml



#24 AR-1248-4

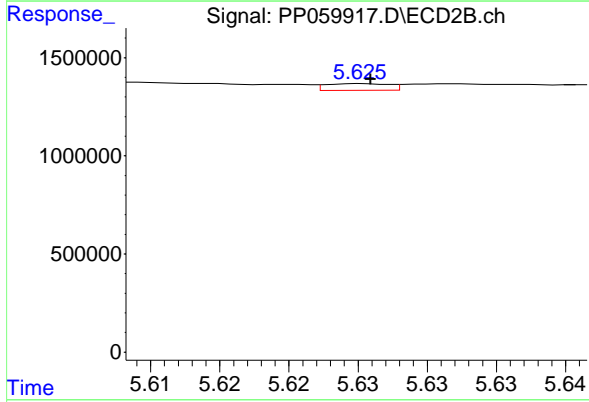
R.T.: 5.225 min
 Delta R.T.: -0.003 min
 Response: 63395
 Conc: 0.94 ng/ml



#25 AR-1248-5

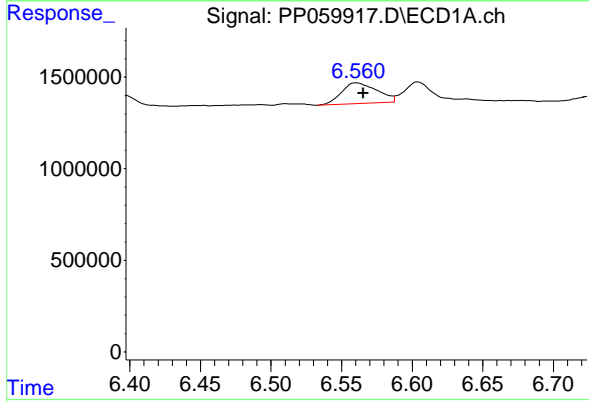
R.T.: 6.604 min
 Delta R.T.: -0.027 min
 Response: 1320000
 Conc: 17.54 ng/ml

Instrument :
 ECD_P
 ClientSampleId :



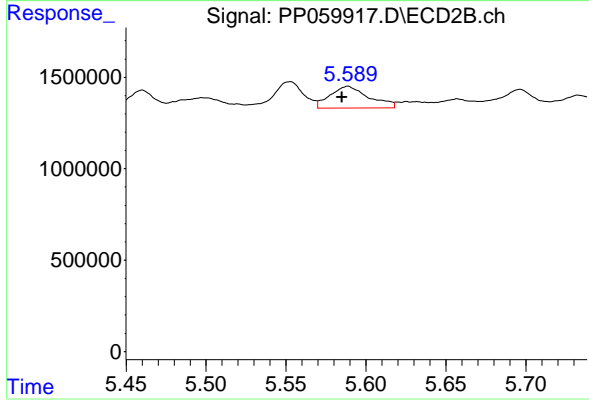
#25 AR-1248-5

R.T.: 5.625 min
 Delta R.T.: 0.000 min
 Response: 109242
 Conc: 1.66 ng/ml



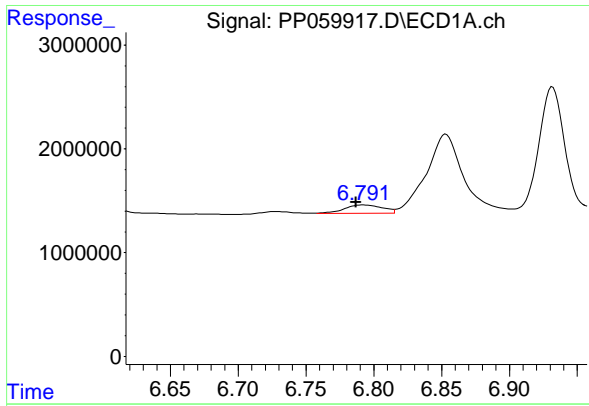
#26 AR-1254-1

R.T.: 6.560 min
 Delta R.T.: -0.005 min
 Response: 1979802
 Conc: 24.80 ng/ml



#26 AR-1254-1

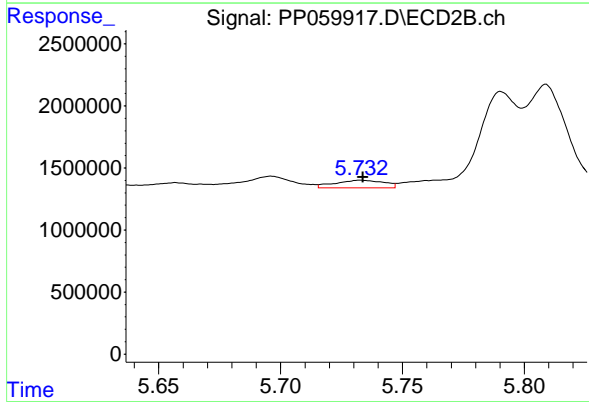
R.T.: 5.589 min
 Delta R.T.: 0.004 min
 Response: 200371
 Conc: 19.97 ng/ml



#27 AR-1254-2

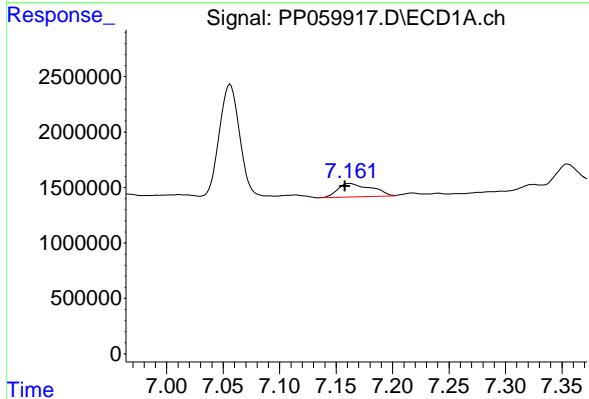
R.T.: 6.792 min
 Delta R.T.: 0.005 min
 Response: 1585926
 Conc: 13.24 ng/ml

Instrument :
 ECD_P
 ClientSampleId :



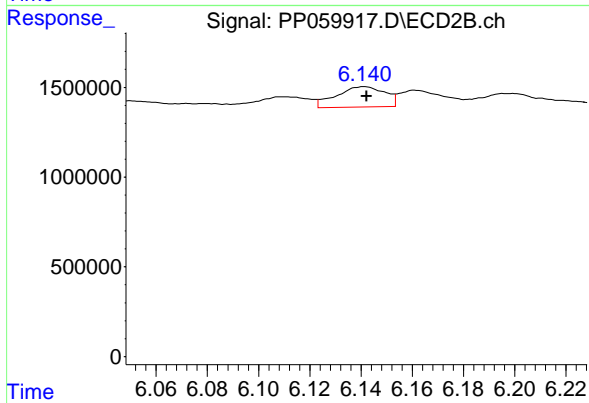
#27 AR-1254-2

R.T.: 5.733 min
 Delta R.T.: -0.001 min
 Response: 864784
 Conc: 9.95 ng/ml



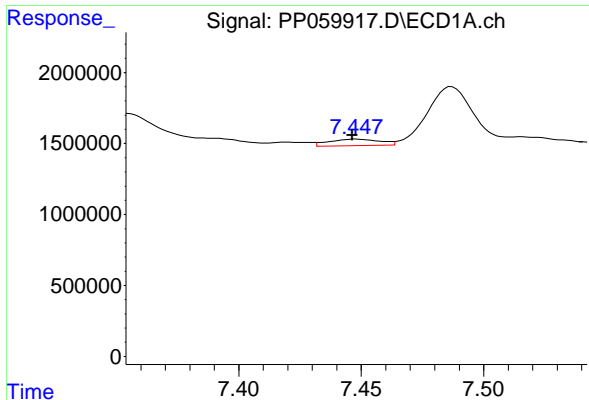
#28 AR-1254-3

R.T.: 7.162 min
 Delta R.T.: 0.004 min
 Response: 2513211
 Conc: 20.69 ng/ml



#28 AR-1254-3

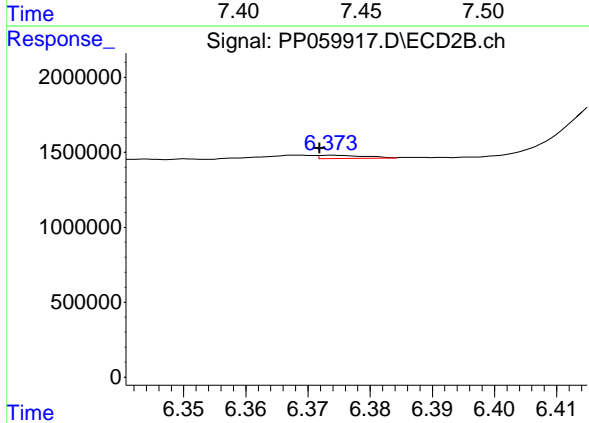
R.T.: 6.141 min
 Delta R.T.: -0.001 min
 Response: 1496101
 Conc: 10.66 ng/ml



#29 AR-1254-4

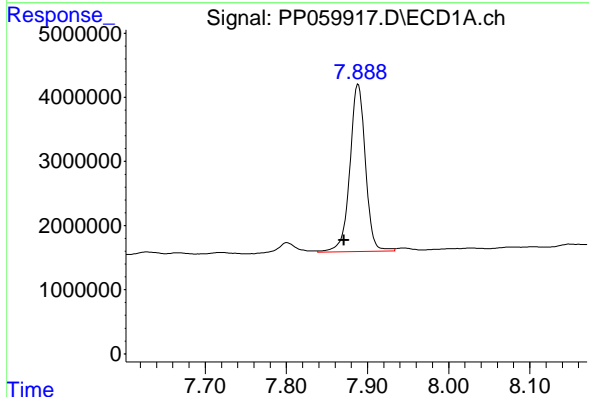
R.T.: 7.448 min
 Delta R.T.: 0.001 min
 Response: 663457
 Conc: 7.46 ng/ml

Instrument :
 ECD_P
 ClientSampleId :



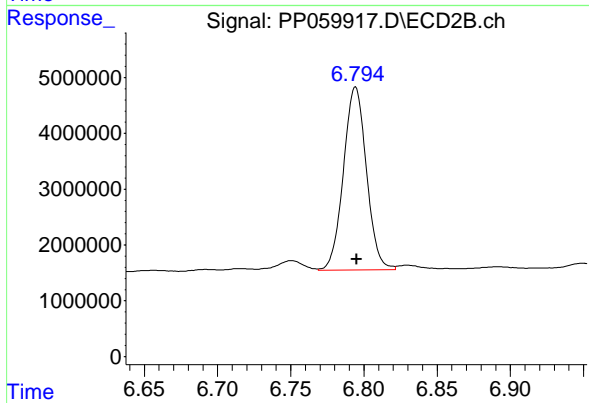
#29 AR-1254-4

R.T.: 6.374 min
 Delta R.T.: 0.002 min
 Response: 111009
 Conc: 1.32 ng/ml



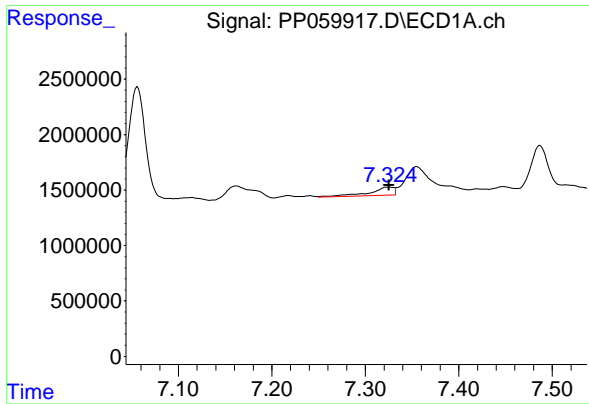
#30 AR-1254-5

R.T.: 7.889 min
 Delta R.T.: 0.017 min
 Response: 34800436
 Conc: 357.75 ng/ml



#30 AR-1254-5

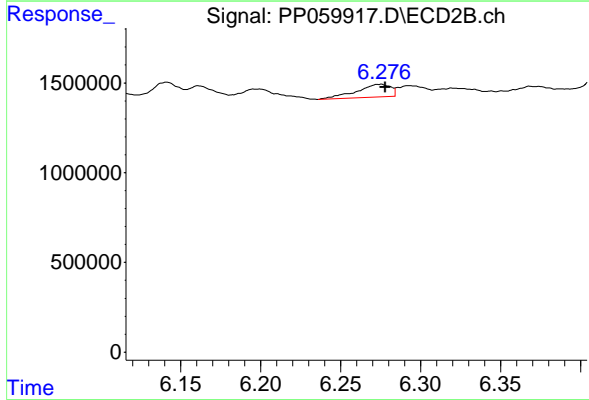
R.T.: 6.794 min
 Delta R.T.: 0.000 min
 Response: 35821770
 Conc: 301.99 ng/ml



#31 AR-1260-1

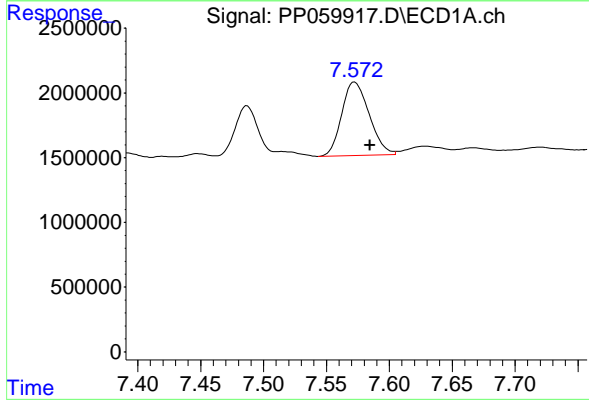
R.T.: 7.325 min
 Delta R.T.: 0.000 min
 Response: 1301877
 Conc: 14.44 ng/ml

Instrument :
 ECD_P
 ClientSampleId :



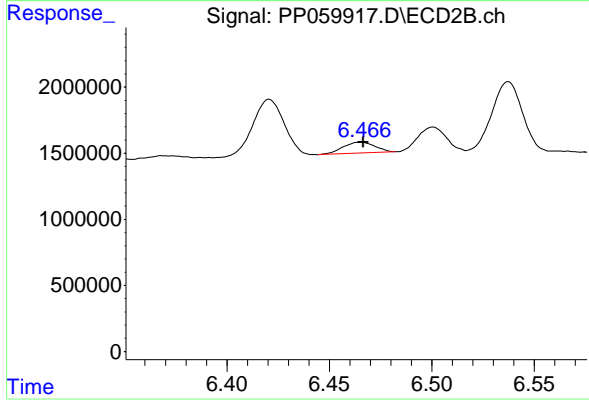
#31 AR-1260-1

R.T.: 6.276 min
 Delta R.T.: -0.002 min
 Response: 1055259
 Conc: 11.33 ng/ml



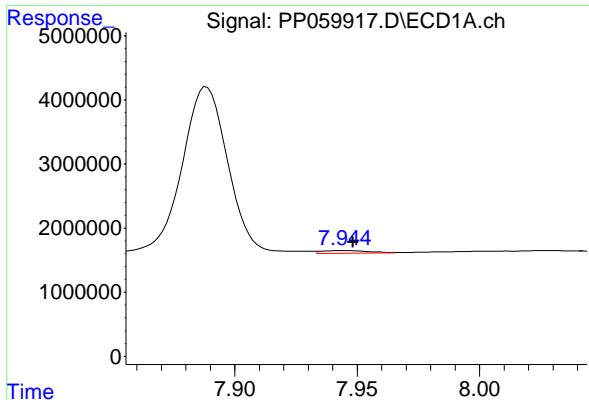
#32 AR-1260-2

R.T.: 7.572 min
 Delta R.T.: -0.012 min
 Response: 8664227
 Conc: 84.46 ng/ml



#32 AR-1260-2

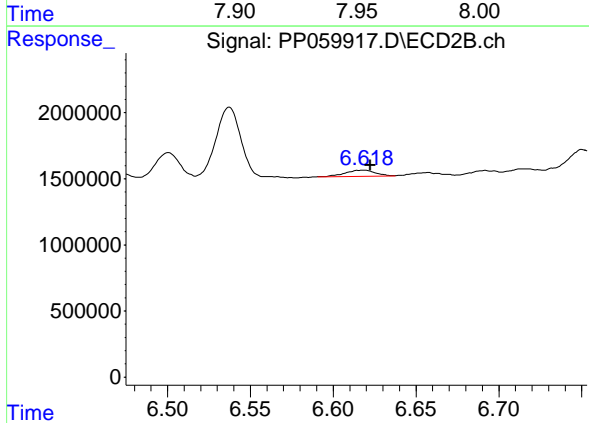
R.T.: 6.466 min
 Delta R.T.: 0.000 min
 Response: 891227
 Conc: 8.13 ng/ml



#33 AR-1260-3

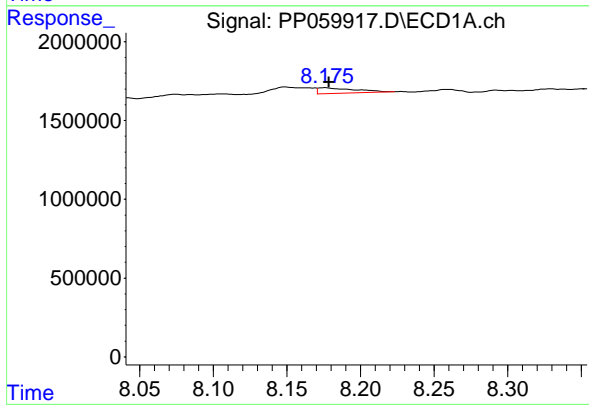
R.T.: 7.945 min
 Delta R.T.: -0.003 min
 Response: 515949
 Conc: 6.55 ng/ml

Instrument :
 ECD_P
 ClientSampleId :



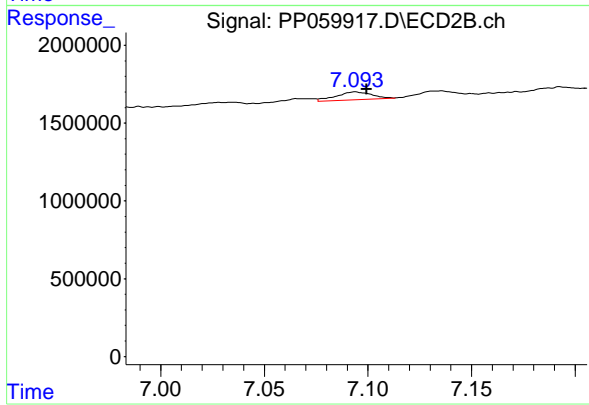
#33 AR-1260-3

R.T.: 6.619 min
 Delta R.T.: -0.003 min
 Response: 586443
 Conc: 5.70 ng/ml



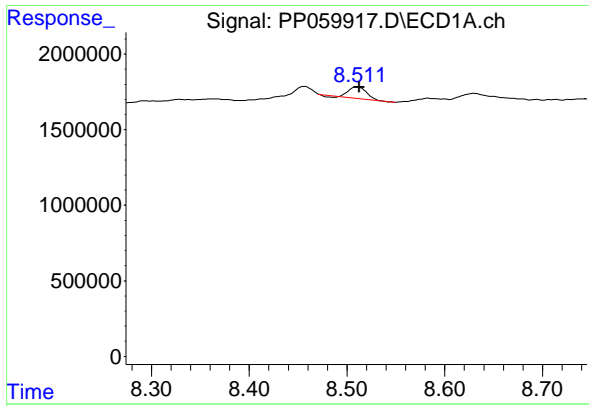
#34 AR-1260-4

R.T.: 8.176 min
 Delta R.T.: -0.003 min
 Response: 606287
 Conc: 6.77 ng/ml



#34 AR-1260-4

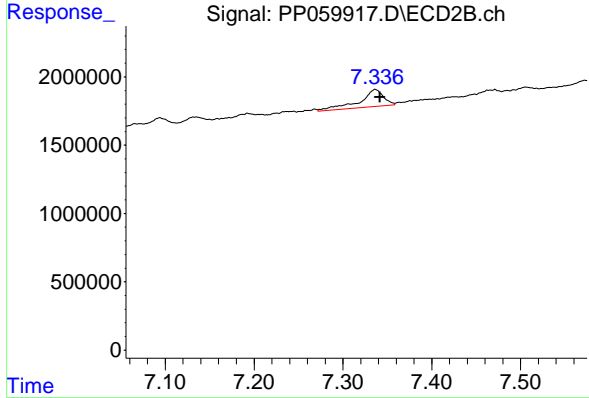
R.T.: 7.094 min
 Delta R.T.: -0.006 min
 Response: 594156
 Conc: 7.13 ng/ml



#35 AR-1260-5

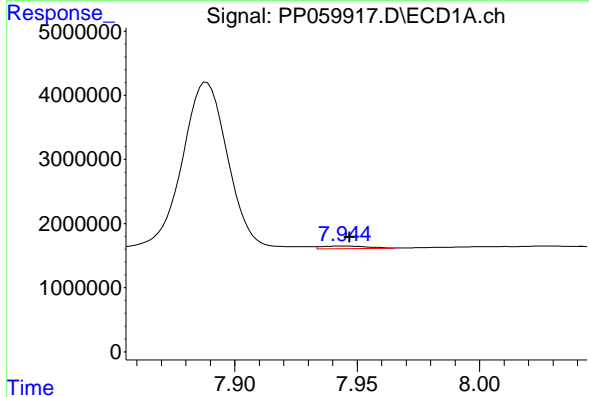
R.T.: 8.510 min
Delta R.T.: -0.002 min
Response: 944278
Conc: 5.53 ng/ml

Instrument : ECD_P
ClientSampleId :



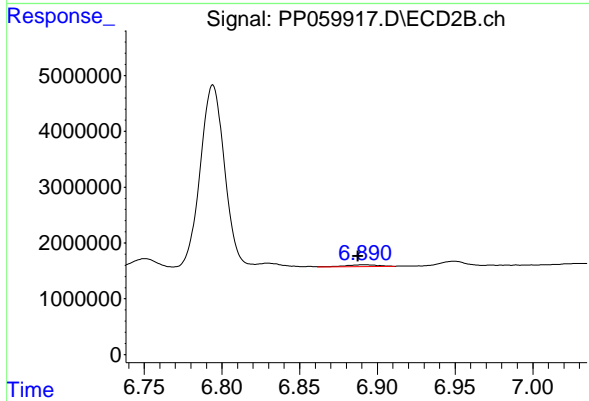
#35 AR-1260-5

R.T.: 7.336 min
Delta R.T.: -0.005 min
Response: 2359173
Conc: 12.26 ng/ml



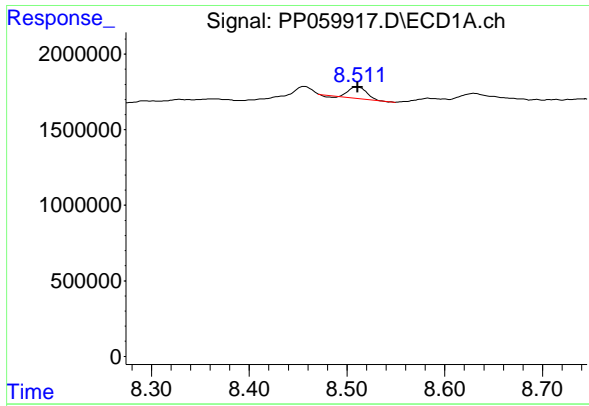
#36 AR-1262-1

R.T.: 7.945 min
Delta R.T.: -0.002 min
Response: 515949
Conc: 4.46 ng/ml



#36 AR-1262-1

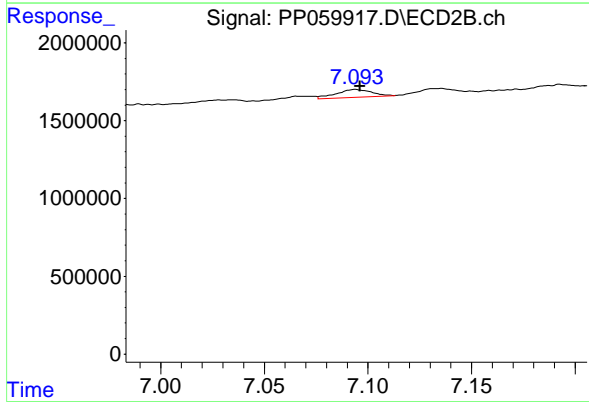
R.T.: 6.891 min
Delta R.T.: 0.003 min
Response: 445812
Conc: 8.83 ng/ml



#37 AR-1262-2

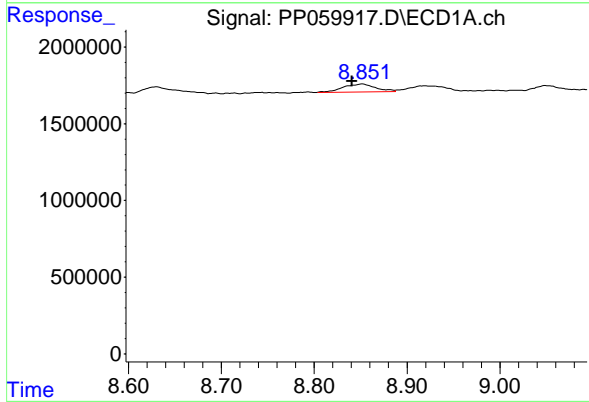
R.T.: 8.510 min
 Delta R.T.: 0.000 min
 Response: 944278
 Conc: 4.72 ng/ml

Instrument : ECD_P
 ClientSampleId :



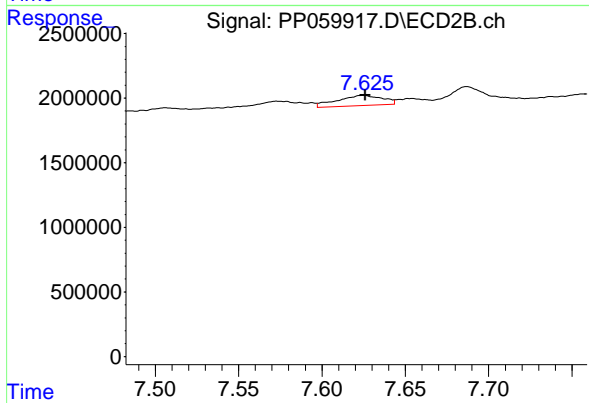
#37 AR-1262-2

R.T.: 7.094 min
 Delta R.T.: -0.002 min
 Response: 594156
 Conc: 5.26 ng/ml



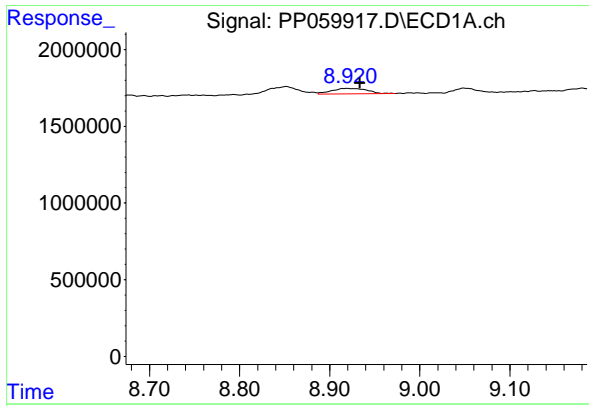
#38 AR-1262-3

R.T.: 8.852 min
 Delta R.T.: 0.011 min
 Response: 1280657
 Conc: 8.89 ng/ml



#38 AR-1262-3

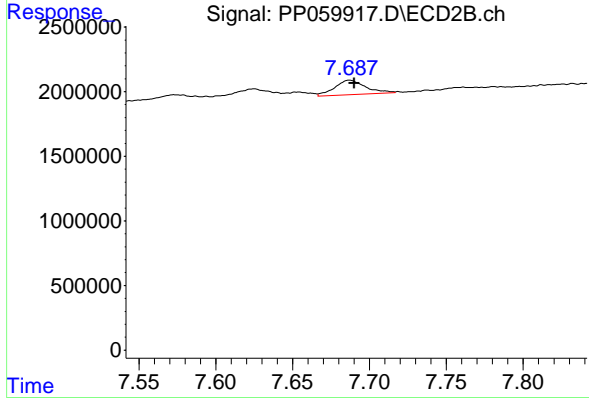
R.T.: 7.625 min
 Delta R.T.: 0.000 min
 Response: 1502080
 Conc: 17.14 ng/ml



#39 AR-1262-4

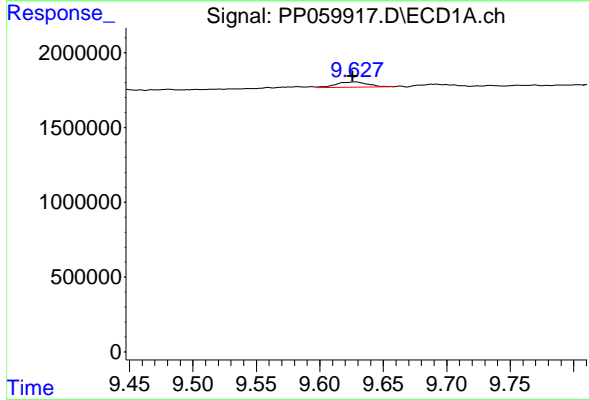
R.T.: 8.920 min
 Delta R.T.: -0.014 min
 Response: 1007192
 Conc: 8.87 ng/ml

Instrument :
 ECD_P
 ClientSampleId :



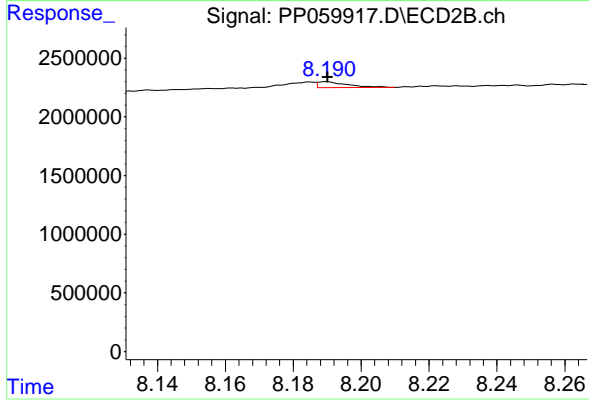
#39 AR-1262-4

R.T.: 7.687 min
 Delta R.T.: -0.003 min
 Response: 1547965
 Conc: 9.48 ng/ml



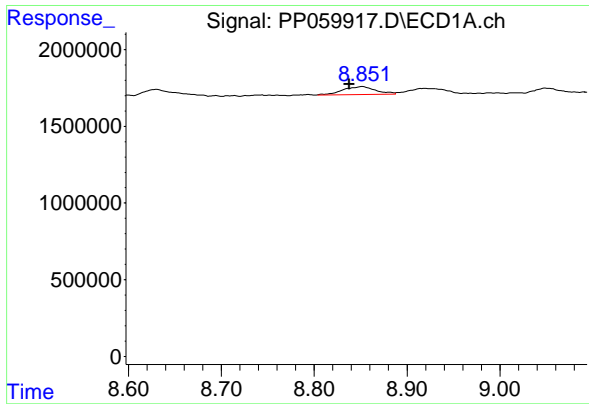
#40 AR-1262-5

R.T.: 9.628 min
 Delta R.T.: 0.002 min
 Response: 607681
 Conc: 8.15 ng/ml



#40 AR-1262-5

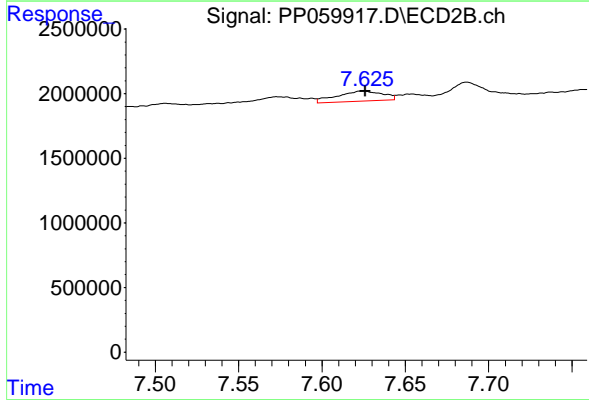
R.T.: 8.190 min
 Delta R.T.: 0.000 min
 Response: 308070
 Conc: 4.13 ng/ml



#41 AR-1268-1

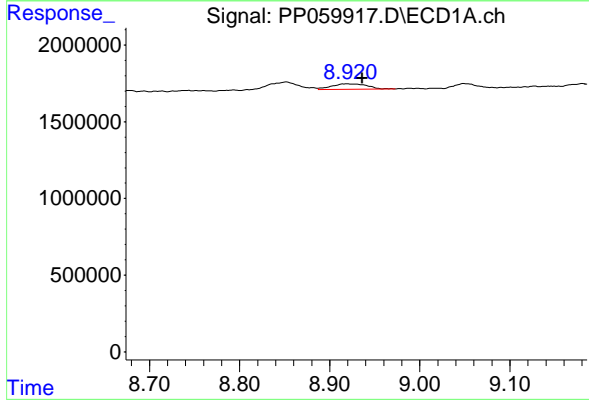
R.T.: 8.852 min
 Delta R.T.: 0.014 min
 Response: 1280657
 Conc: 5.11 ng/ml

Instrument :
 ECD_P
 ClientSampleId :



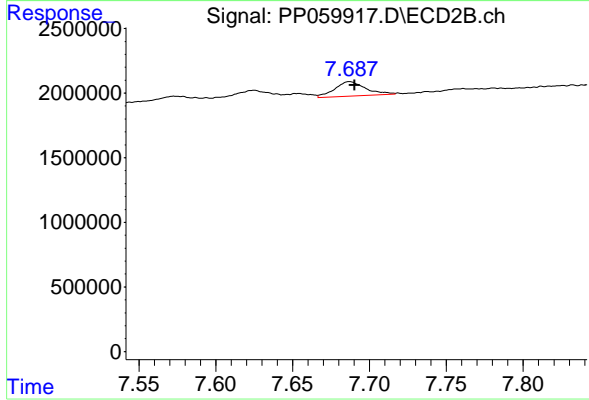
#41 AR-1268-1

R.T.: 7.625 min
 Delta R.T.: 0.000 min
 Response: 1502080
 Conc: 5.77 ng/ml



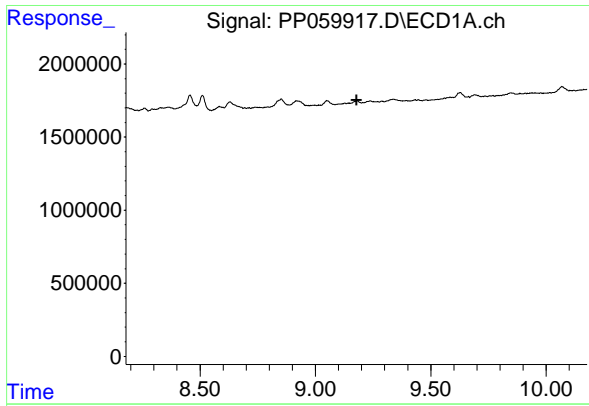
#42 AR-1268-2

R.T.: 8.920 min
 Delta R.T.: -0.016 min
 Response: 1007192
 Conc: 4.39 ng/ml



#42 AR-1268-2

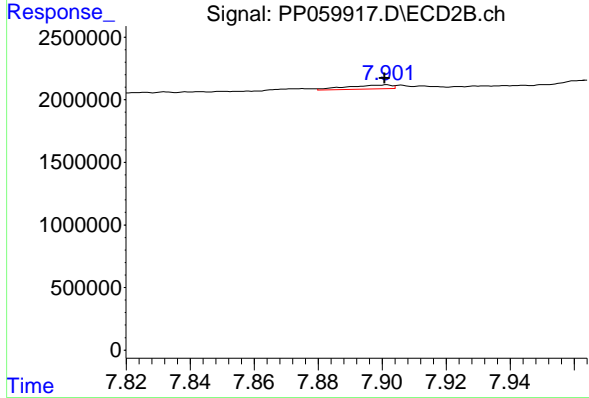
R.T.: 7.687 min
 Delta R.T.: -0.003 min
 Response: 1547965
 Conc: 6.70 ng/ml



#43 AR-1268-3

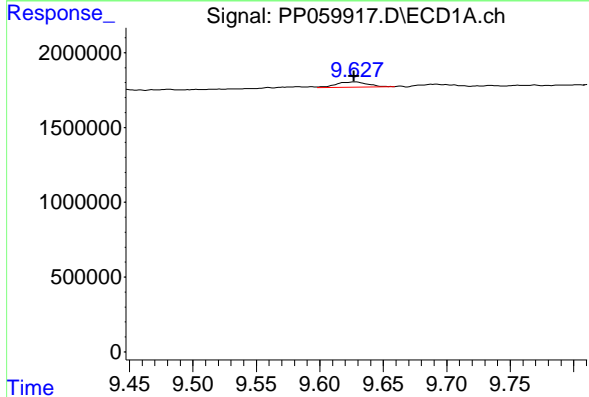
R.T.: 0.000 min
 Exp R.T.: 9.178 min
 Response: 0
 Conc: N.D.

Instrument :
 ECD_P
 ClientSampleId :



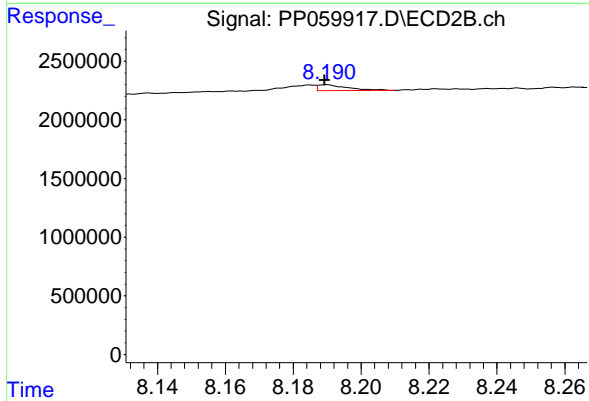
#43 AR-1268-3

R.T.: 7.901 min
 Delta R.T.: 0.000 min
 Response: 304967
 Conc: 1.49 ng/ml



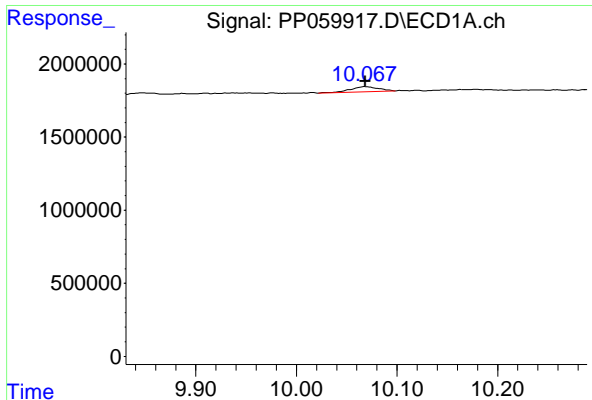
#44 AR-1268-4

R.T.: 9.628 min
 Delta R.T.: 0.001 min
 Response: 607681
 Conc: 7.34 ng/ml



#44 AR-1268-4

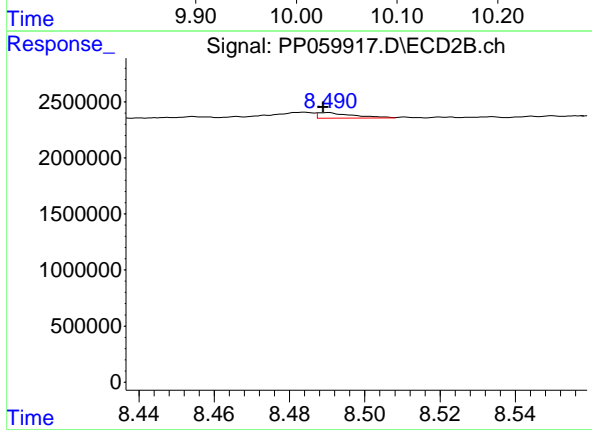
R.T.: 8.190 min
 Delta R.T.: 0.000 min
 Response: 308070
 Conc: 3.82 ng/ml



#45 AR-1268-5

R.T.: 10.068 min
 Delta R.T.: 0.000 min
 Response: 665101
 Conc: 1.10 ng/ml

Instrument :
 ECD_P
 ClientSampleId :



#45 AR-1268-5

R.T.: 8.490 min
 Delta R.T.: 0.001 min
 Response: 315982
 Conc: 0.50 ng/ml