

Data Path : Z:\pestpcbsrv\HPCHEM1\ECD\_P\Data\PP091823\  
 Data File : PP059895.D  
 Signal(s) : Signal #1: ECD1A.ch Signal #2: ECD2B.ch  
 Acq On : 18 Sep 2023 21:42  
 Operator : YP\AJ  
 Sample : AR1248ICC750  
 Misc :  
 ALS Vial : 16 Sample Multiplier: 1

**Instrument :**  
 ECD\_P  
**ClientSampleId :**  
 AR1248ICC750

Integration File signal 1: autoint1.e  
 Integration File signal 2: autoint2.e  
 Quant Time: Sep 19 04:58:17 2023  
 Quant Method : Z:\pestpcbsrv\HPCHEM1\ECD\_P\methods\PP091823.M  
 Quant Title : GC EXTRACTABLES  
 QLast Update : Tue Sep 19 04:55:59 2023  
 Response via : Initial Calibration  
 Integrator: ChemStation

Volume Inj. : 2 µl  
 Signal #1 Phase : ZB-MR1 Signal #2 Phase: ZB-MR2  
 Signal #1 Info : 30Mx0.32mmx 0.50µ Signal #2 Info : 30M x 0.32mm x 0.25µm

Compound	RT#1	RT#2	Resp#1	Resp#2	ng/ml	ng/ml
-----						
System Monitoring Compounds						
1) SA Tetrachlo...	4.509	3.669	161.7E6	134.3E6	72.976	73.403
2) SA Decachlor...	10.431	8.754	119.6E6	122.8E6	71.896	73.006
Target Compounds						
21) L5 AR-1248-1	5.697	4.772	32143176	28368335	702.574	712.091
22) L5 AR-1248-2	5.975	5.013	46142068	38917327	702.003	708.433
23) L5 AR-1248-3	6.183	5.055	50787824	40978247	705.486	707.584
24) L5 AR-1248-4	6.592	5.229	54815330	48159961	707.643	708.920
25) L5 AR-1248-5	6.631	5.626	53559329	47555711	710.628	717.357
-----						

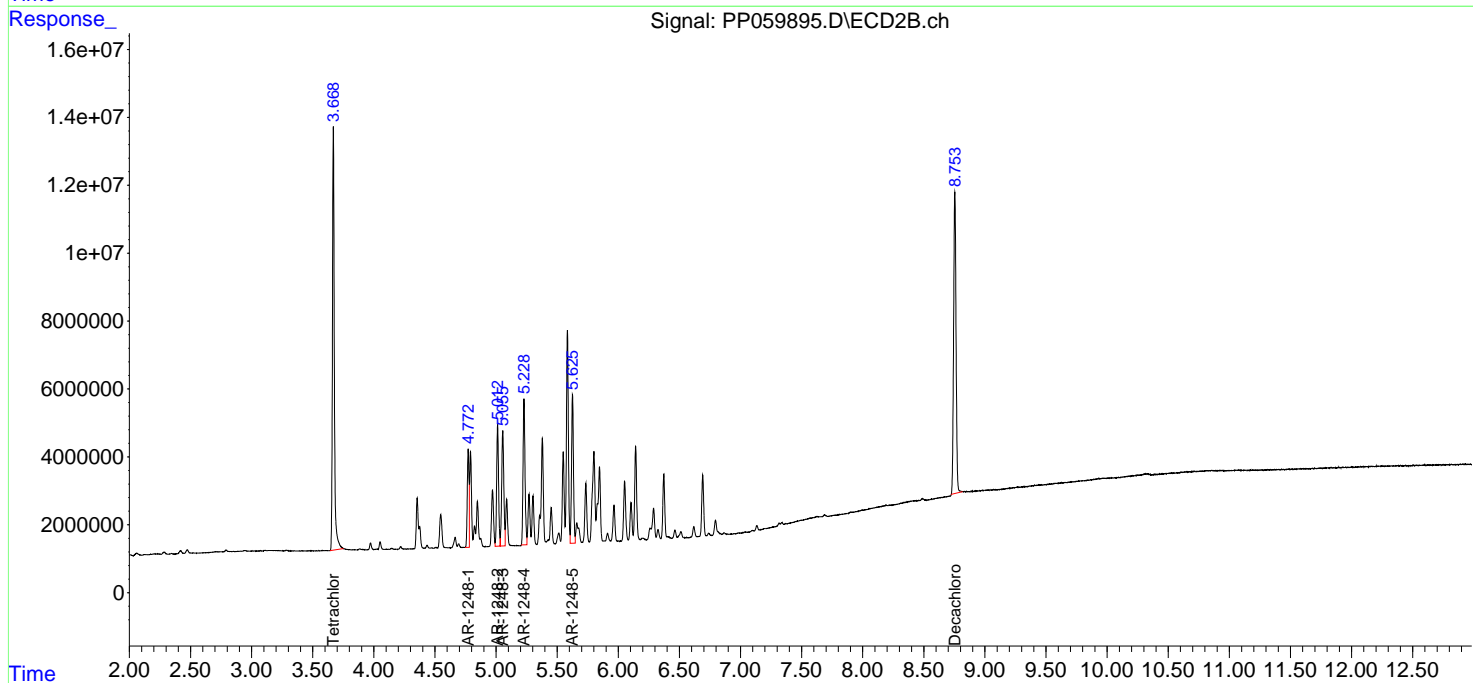
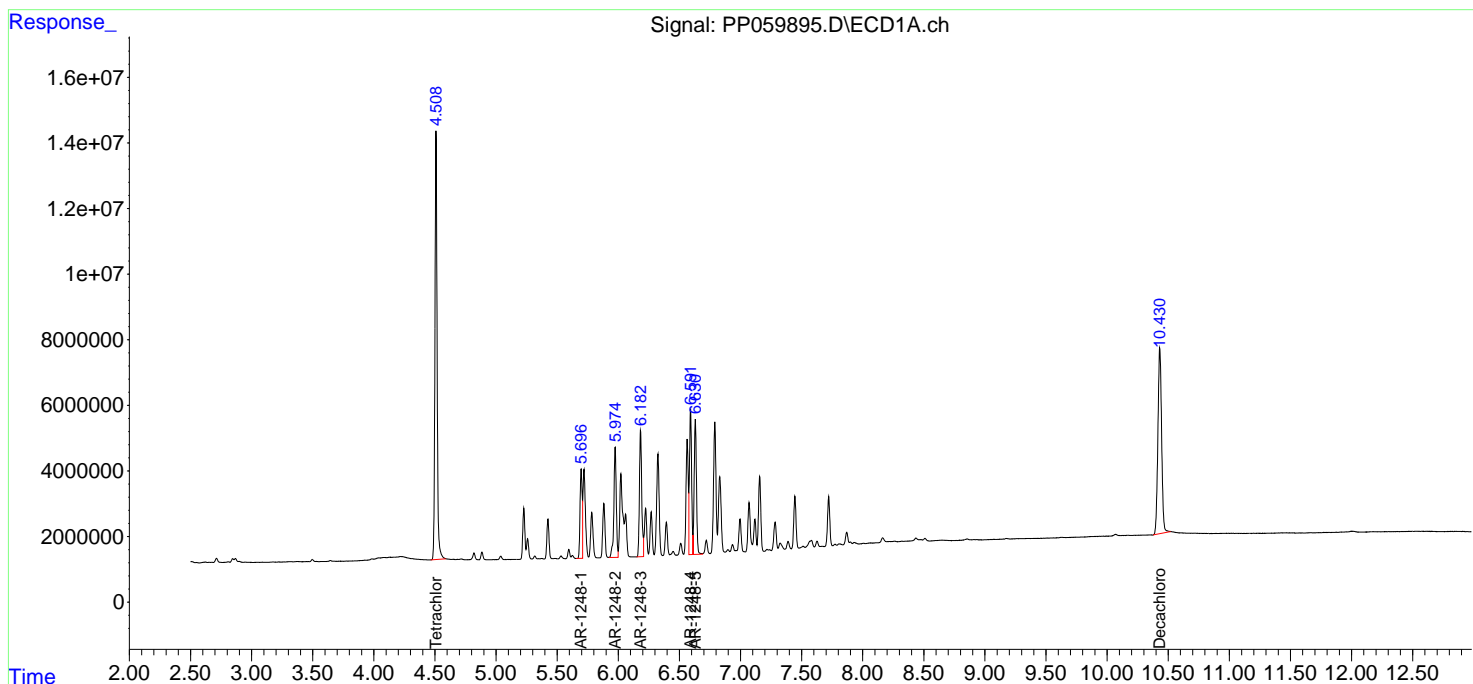
(f)=RT Delta > 1/2 Window (#)=Amounts differ by > 25% (m)=manual int.

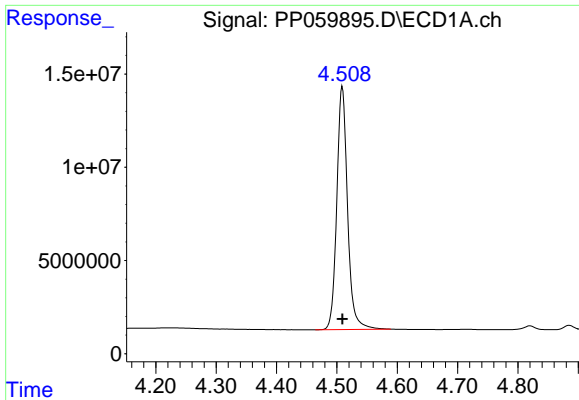
Data Path : Z:\pestpcbsrv\HPCHEM1\ECD\_P\Data\PP091823\  
 Data File : PP059895.D  
 Signal(s) : Signal #1: ECD1A.ch Signal #2: ECD2B.ch  
 Acq On : 18 Sep 2023 21:42  
 Operator : YP\AJ  
 Sample : AR1248ICC750  
 Misc :  
 ALS Vial : 16 Sample Multiplier: 1

Instrument :  
 ECD\_P  
 ClientSampleId :  
 AR1248ICC750

Integration File signal 1: autoint1.e  
 Integration File signal 2: autoint2.e  
 Quant Time: Sep 19 04:58:17 2023  
 Quant Method : Z:\pestpcbsrv\HPCHEM1\ECD\_P\methods\PP091823.M  
 Quant Title : GC EXTRACTABLES  
 QLast Update : Tue Sep 19 04:55:59 2023  
 Response via : Initial Calibration  
 Integrator: ChemStation

Volume Inj. : 2 µl  
 Signal #1 Phase : ZB-MR1 Signal #2 Phase: ZB-MR2  
 Signal #1 Info : 30Mx0.32mmx 0.50µ Signal #2 Info : 30M x 0.32mm x 0.25µm

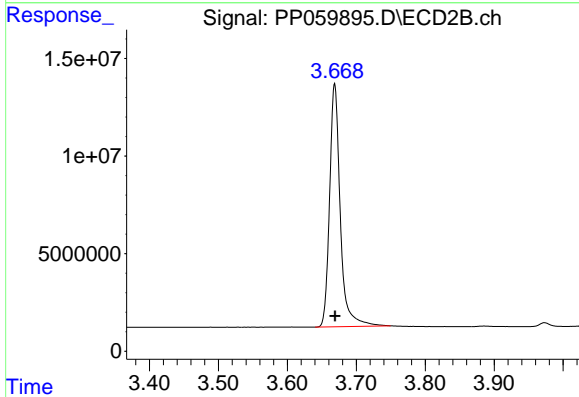




#1 Tetrachloro-m-xylene

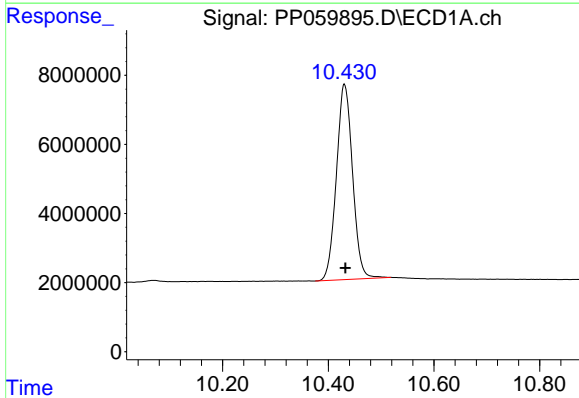
R.T.: 4.509 min  
Delta R.T.: 0.000 min  
Response: 161692319  
Conc: 72.98 ng/ml

Instrument :  
ECD\_P  
ClientSampleId :  
AR1248ICC750



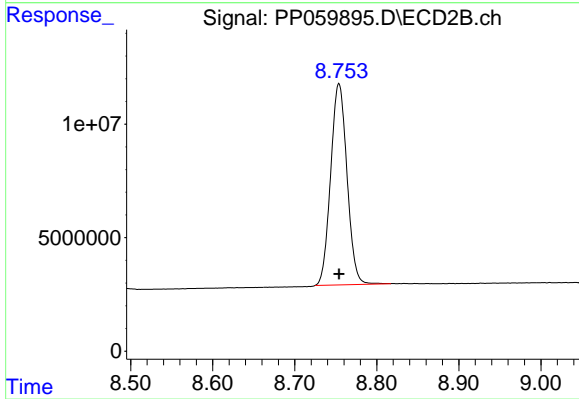
#1 Tetrachloro-m-xylene

R.T.: 3.669 min  
Delta R.T.: 0.000 min  
Response: 134316734  
Conc: 73.40 ng/ml



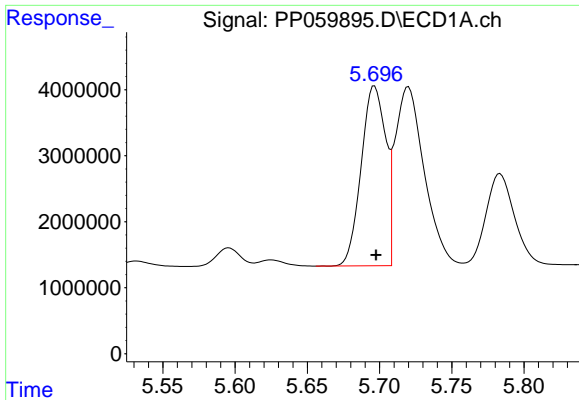
#2 Decachlorobiphenyl

R.T.: 10.431 min  
Delta R.T.: -0.002 min  
Response: 119622155  
Conc: 71.90 ng/ml



#2 Decachlorobiphenyl

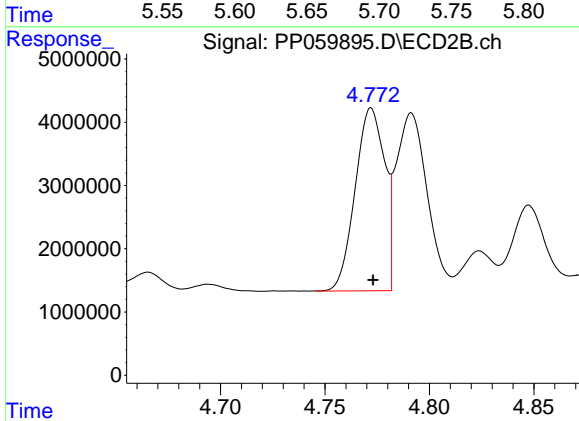
R.T.: 8.754 min  
Delta R.T.: 0.000 min  
Response: 122783530  
Conc: 73.01 ng/ml



#21 AR-1248-1

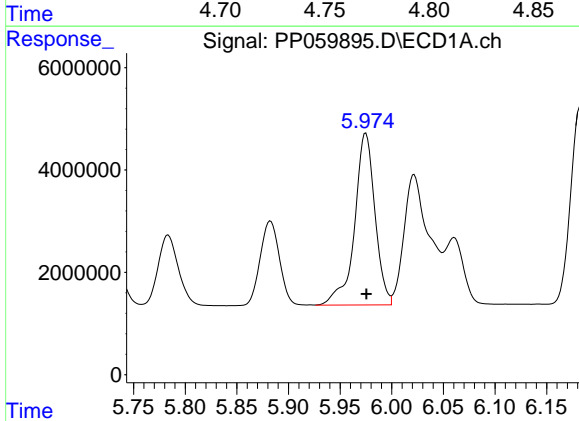
R.T.: 5.697 min  
 Delta R.T.: 0.000 min  
 Response: 32143176  
 Conc: 702.57 ng/ml

Instrument :  
 ECD\_P  
 ClientSampleId :  
 AR1248ICC750



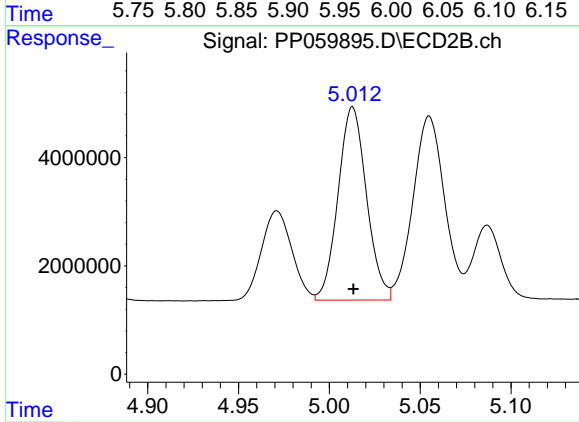
#21 AR-1248-1

R.T.: 4.772 min  
 Delta R.T.: 0.000 min  
 Response: 28368335  
 Conc: 712.09 ng/ml



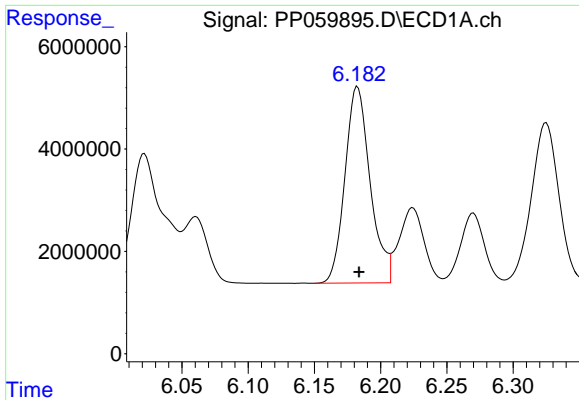
#22 AR-1248-2

R.T.: 5.975 min  
 Delta R.T.: 0.000 min  
 Response: 46142068  
 Conc: 702.00 ng/ml



#22 AR-1248-2

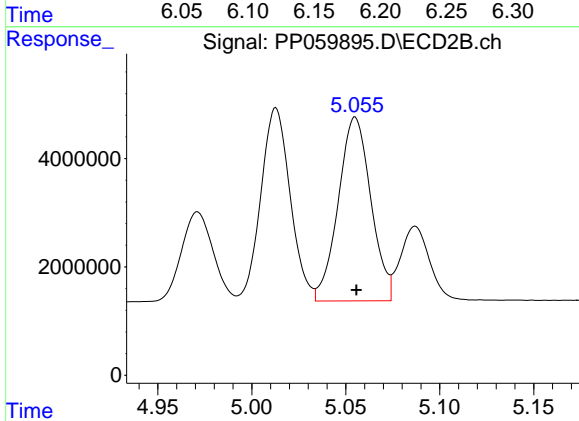
R.T.: 5.013 min  
 Delta R.T.: 0.000 min  
 Response: 38917327  
 Conc: 708.43 ng/ml



#23 AR-1248-3

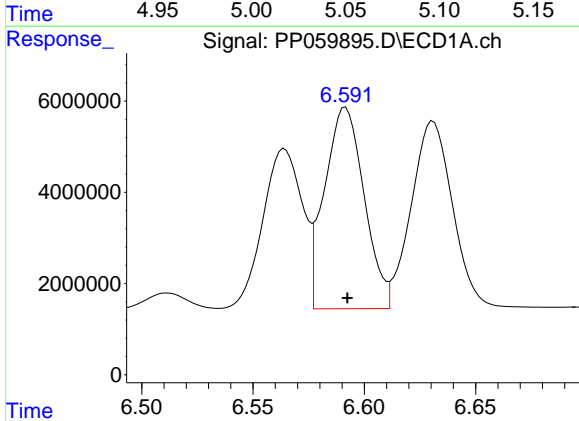
R.T.: 6.183 min  
 Delta R.T.: -0.001 min  
 Response: 50787824  
 Conc: 705.49 ng/ml

Instrument :  
 ECD\_P  
 ClientSampleId :  
 AR1248ICC750



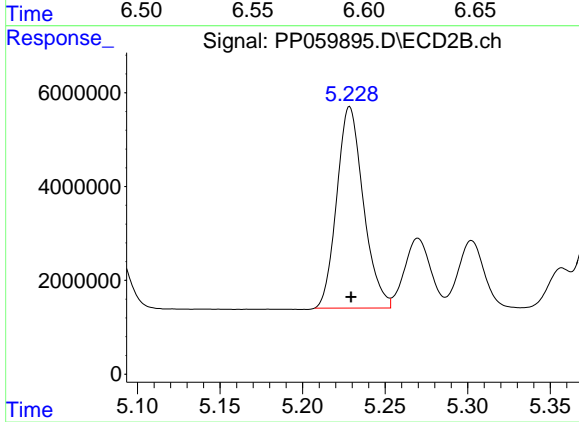
#23 AR-1248-3

R.T.: 5.055 min  
 Delta R.T.: 0.000 min  
 Response: 40978247  
 Conc: 707.58 ng/ml



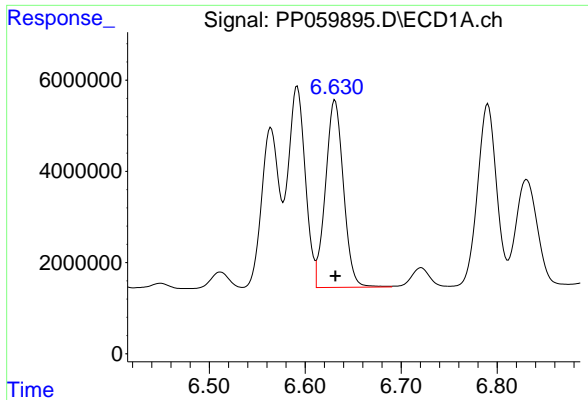
#24 AR-1248-4

R.T.: 6.592 min  
 Delta R.T.: 0.000 min  
 Response: 54815330  
 Conc: 707.64 ng/ml



#24 AR-1248-4

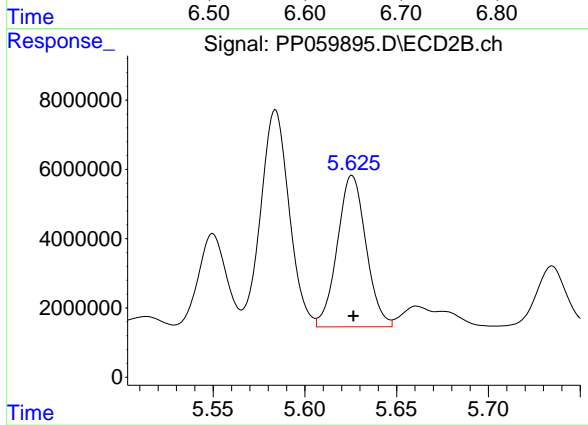
R.T.: 5.229 min  
 Delta R.T.: 0.000 min  
 Response: 48159961  
 Conc: 708.92 ng/ml



#25 AR-1248-5

R.T.: 6.631 min  
Delta R.T.: 0.000 min  
Response: 53559329  
Conc: 710.63 ng/ml

Instrument :  
ECD\_P  
ClientSampleId :  
AR1248ICC750



#25 AR-1248-5

R.T.: 5.626 min  
Delta R.T.: 0.000 min  
Response: 47555711  
Conc: 717.36 ng/ml