

Data Path : Z:\pestpcbsrv\HPCHEM1\ECD\_P\Data\PP091823\  
 Data File : PP059907.D  
 Signal(s) : Signal #1: ECD1A.ch Signal #2: ECD2B.ch  
 Acq On : 19 Sep 2023 00:58  
 Operator : YP\AJ  
 Sample : AR1268ICC500  
 Misc :  
 ALS Vial : 28 Sample Multiplier: 1

Instrument :  
 ECD\_P  
 ClientSampleId :  
 AR1268ICC500

Integration File signal 1: autoint1.e  
 Integration File signal 2: autoint2.e  
 Quant Time: Sep 19 05:33:05 2023  
 Quant Method : Z:\pestpcbsrv\HPCHEM1\ECD\_P\methods\PP091823.M  
 Quant Title : GC EXTRACTABLES  
 QLast Update : Tue Sep 19 05:30:31 2023  
 Response via : Initial Calibration  
 Integrator: ChemStation

Volume Inj. : 2 µl  
 Signal #1 Phase : ZB-MR1 Signal #2 Phase: ZB-MR2  
 Signal #1 Info : 30Mx0.32mmx 0.50µ Signal #2 Info : 30M x 0.32mm x 0.25µm

Compound	RT#1	RT#2	Resp#1	Resp#2	ng/ml	ng/ml
-----						
System Monitoring Compounds						
1) SA Tetrachlo...	4.509	3.669	112.2E6	91314658	50.000	50.000
2) SA Decachlor...	10.430	8.753	146.3E6	153.4E6	50.000	50.000
Target Compounds						
41) L9 AR-1268-1	8.837	7.626	125.8E6	132.1E6	500.000	500.000
42) L9 AR-1268-2	8.936	7.690	116.2E6	118.9E6	500.000	500.000
43) L9 AR-1268-3	9.178	7.902	99811296	104.8E6	500.000	500.000
44) L9 AR-1268-4	9.627	8.189	41669185	42001082	500.000	500.000
45) L9 AR-1268-5	10.068	8.488	308.8E6	330.6E6	500.000	500.000
-----						

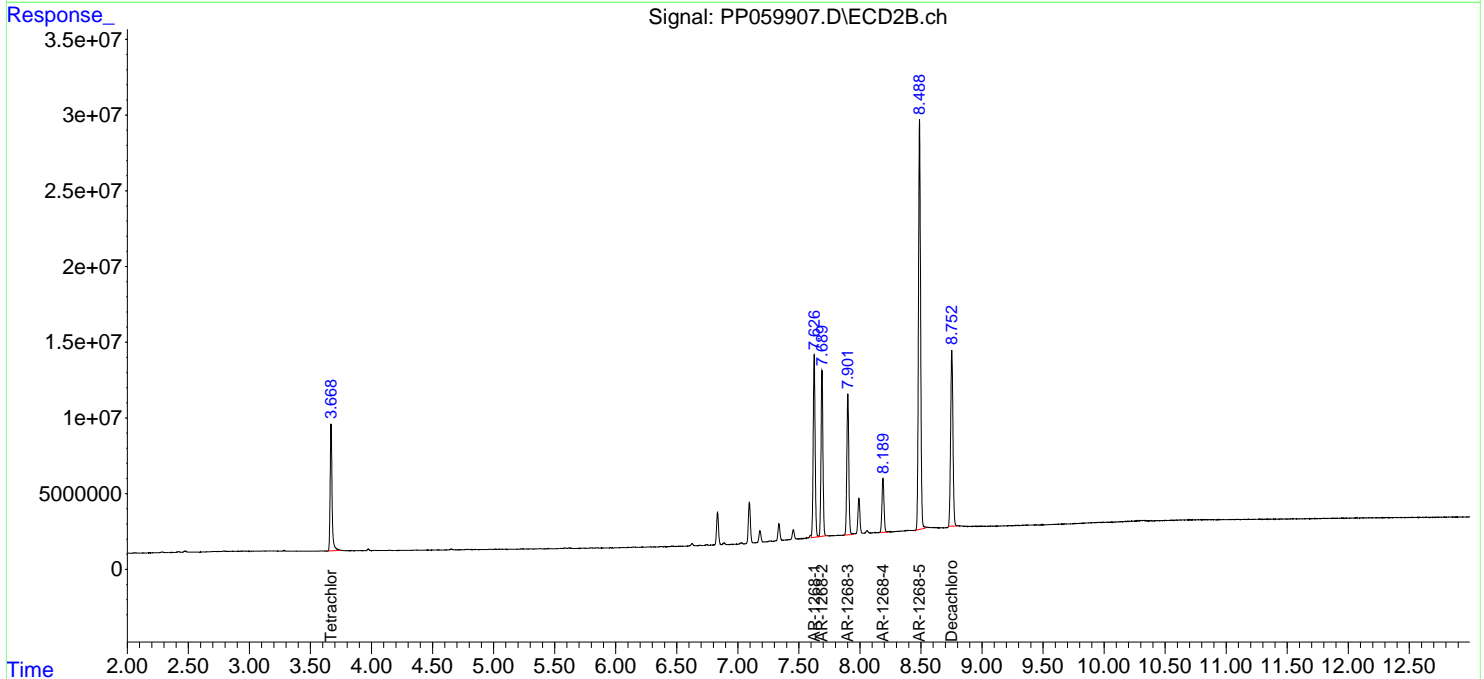
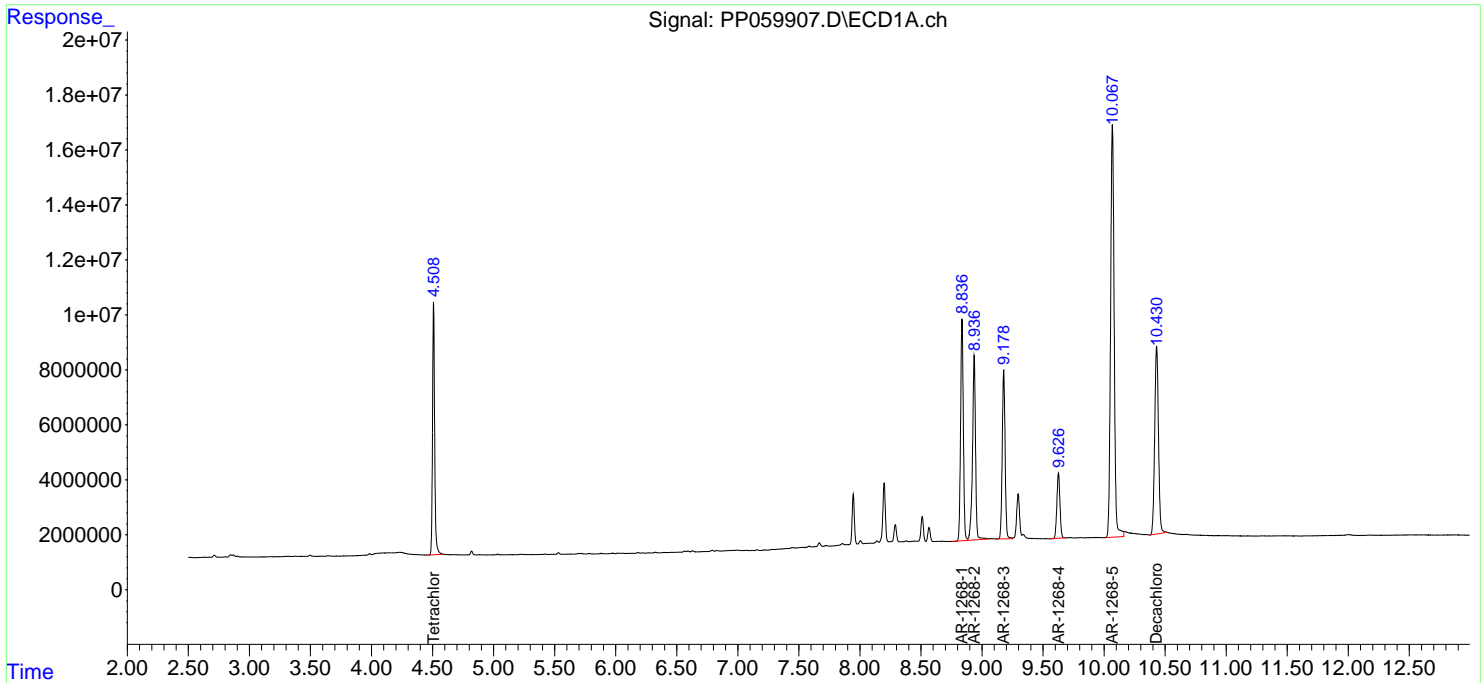
(f)=RT Delta > 1/2 Window (#)=Amounts differ by > 25% (m)=manual int.

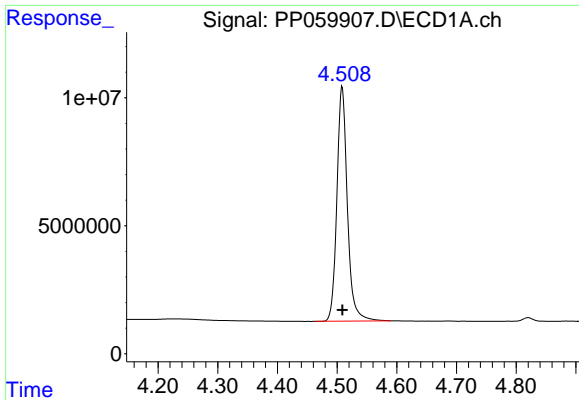
Data Path : Z:\pestpcbsrv\HPCHEM1\ECD\_P\Data\PP091823\  
 Data File : PP059907.D  
 Signal(s) : Signal #1: ECD1A.ch Signal #2: ECD2B.ch  
 Acq On : 19 Sep 2023 00:58  
 Operator : YP\AJ  
 Sample : AR1268ICC500  
 Misc :  
 ALS Vial : 28 Sample Multiplier: 1

Instrument :  
 ECD\_P  
 ClientSampleId :  
 AR1268ICC500

Integration File signal 1: autoint1.e  
 Integration File signal 2: autoint2.e  
 Quant Time: Sep 19 05:33:05 2023  
 Quant Method : Z:\pestpcbsrv\HPCHEM1\ECD\_P\methods\PP091823.M  
 Quant Title : GC EXTRACTABLES  
 QLast Update : Tue Sep 19 05:30:31 2023  
 Response via : Initial Calibration  
 Integrator: ChemStation

Volume Inj. : 2 µl  
 Signal #1 Phase : ZB-MR1 Signal #2 Phase: ZB-MR2  
 Signal #1 Info : 30Mx0.32mmx 0.50µ Signal #2 Info : 30M x 0.32mm x 0.25µm

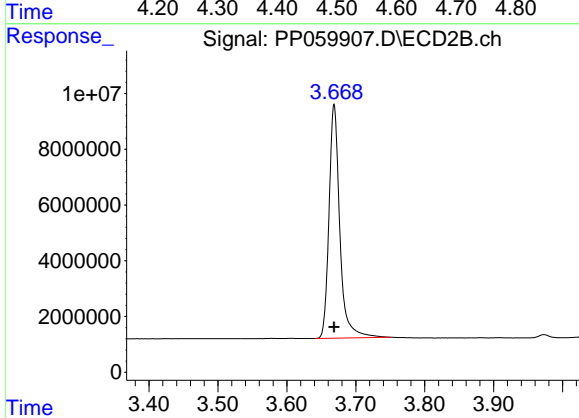




#1 Tetrachloro-m-xylene

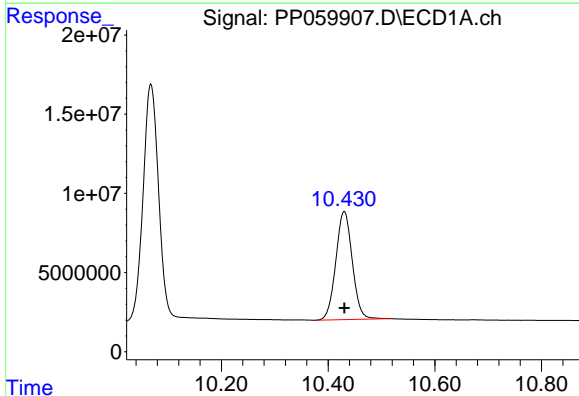
R.T.: 4.509 min  
 Delta R.T.: 0.000 min  
 Response: 112155705  
 Conc: 50.00 ng/ml

Instrument :  
 ECD\_P  
 ClientSampleId :  
 AR1268ICC500



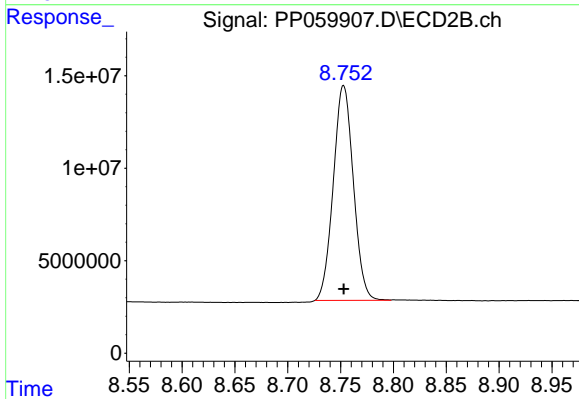
#1 Tetrachloro-m-xylene

R.T.: 3.669 min  
 Delta R.T.: 0.000 min  
 Response: 91314658  
 Conc: 50.00 ng/ml



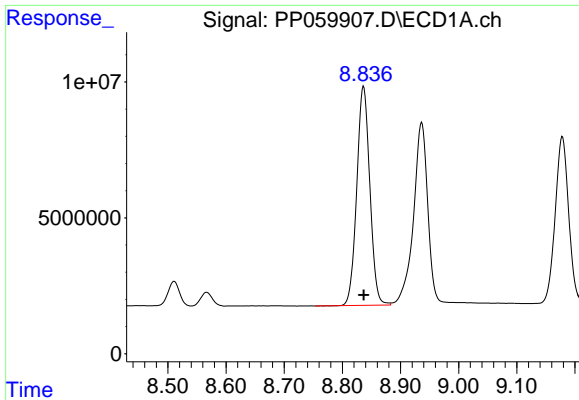
#2 Decachlorobiphenyl

R.T.: 10.430 min  
 Delta R.T.: 0.000 min  
 Response: 146323975  
 Conc: 50.00 ng/ml



#2 Decachlorobiphenyl

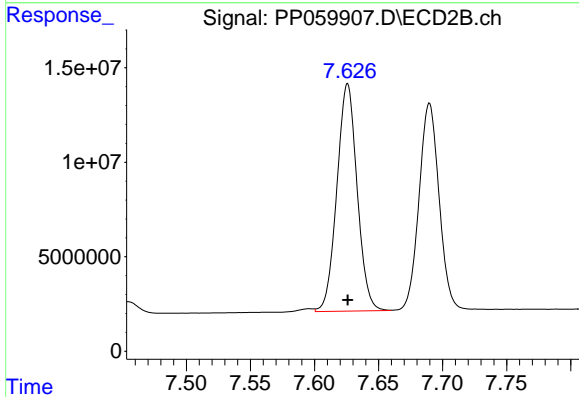
R.T.: 8.753 min  
 Delta R.T.: 0.000 min  
 Response: 153364114  
 Conc: 50.00 ng/ml



#41 AR-1268-1

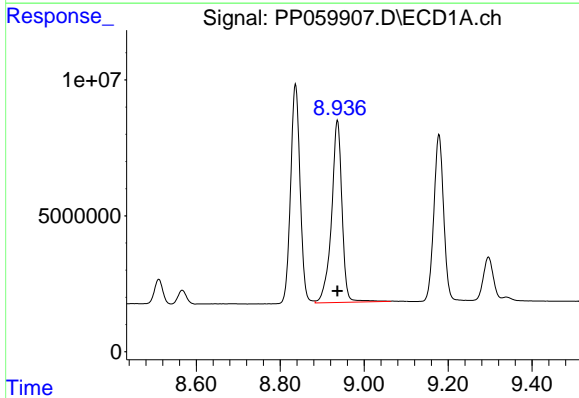
R.T.: 8.837 min  
 Delta R.T.: 0.000 min  
 Response: 125784738  
 Conc: 500.00 ng/ml

Instrument :  
 ECD\_P  
 ClientSampleId :  
 AR1268ICC500



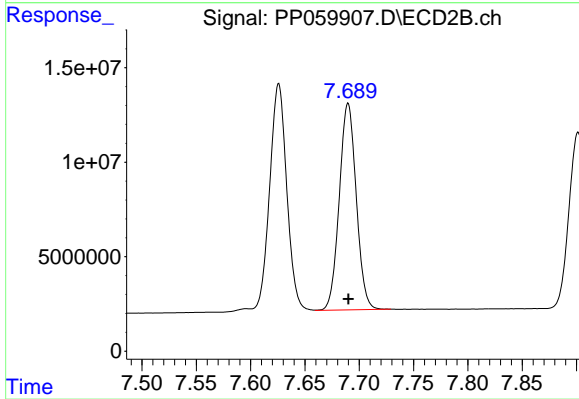
#41 AR-1268-1

R.T.: 7.626 min  
 Delta R.T.: 0.000 min  
 Response: 132144489  
 Conc: 500.00 ng/ml



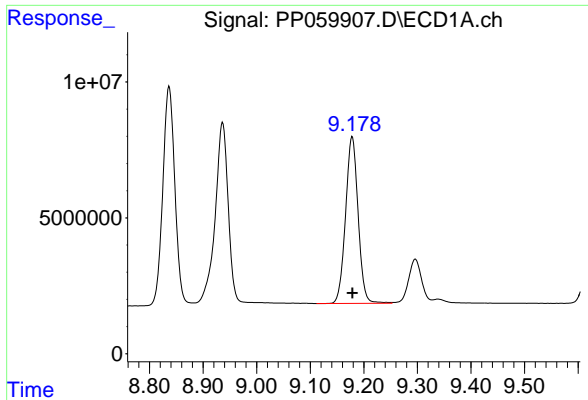
#42 AR-1268-2

R.T.: 8.936 min  
 Delta R.T.: 0.000 min  
 Response: 116199424  
 Conc: 500.00 ng/ml



#42 AR-1268-2

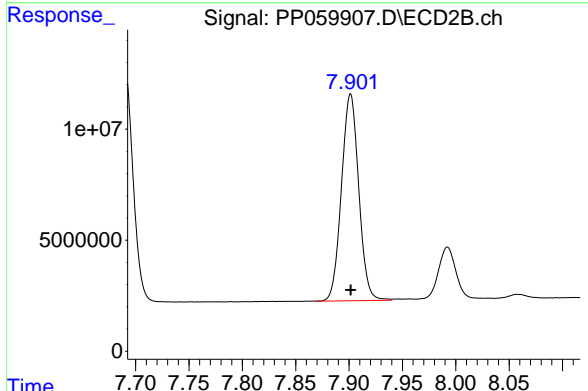
R.T.: 7.690 min  
 Delta R.T.: 0.000 min  
 Response: 118942512  
 Conc: 500.00 ng/ml



#43 AR-1268-3

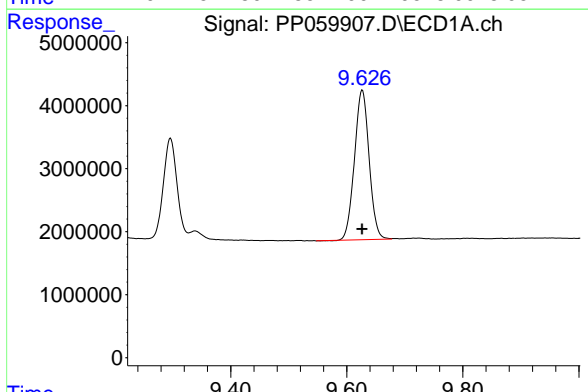
R.T.: 9.178 min  
 Delta R.T.: 0.000 min  
 Response: 99811296  
 Conc: 500.00 ng/ml

Instrument :  
 ECD\_P  
 ClientSampleId :  
 AR1268ICC500



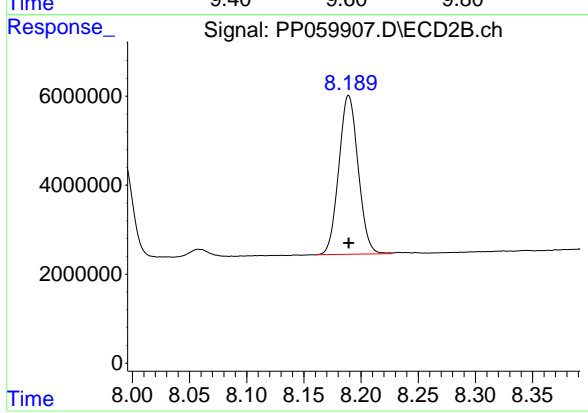
#43 AR-1268-3

R.T.: 7.902 min  
 Delta R.T.: 0.000 min  
 Response: 104769058  
 Conc: 500.00 ng/ml



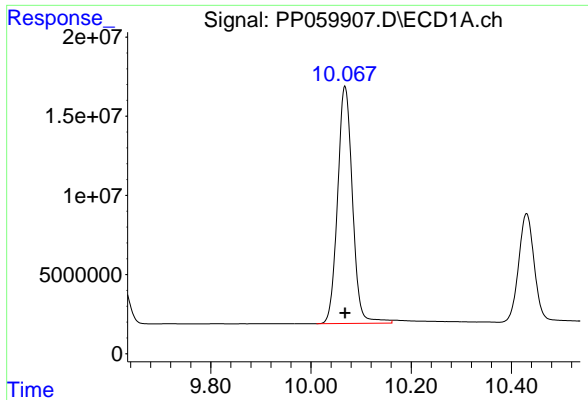
#44 AR-1268-4

R.T.: 9.627 min  
 Delta R.T.: 0.000 min  
 Response: 41669185  
 Conc: 500.00 ng/ml



#44 AR-1268-4

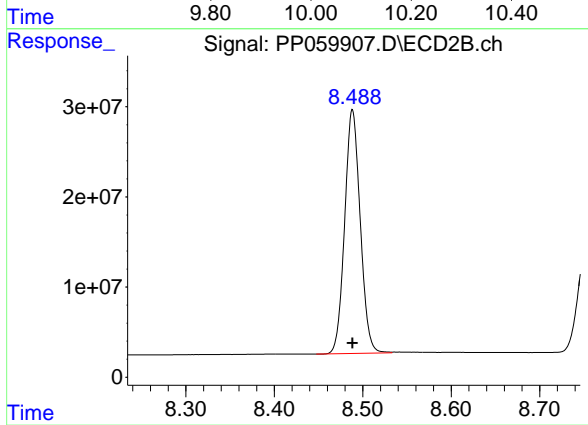
R.T.: 8.189 min  
 Delta R.T.: 0.000 min  
 Response: 42001082  
 Conc: 500.00 ng/ml



#45 AR-1268-5

R.T.: 10.068 min  
Delta R.T.: 0.000 min  
Response: 308789339  
Conc: 500.00 ng/ml

Instrument :  
ECD\_P  
ClientSampleId :  
AR1268ICC500



#45 AR-1268-5

R.T.: 8.488 min  
Delta R.T.: 0.000 min  
Response: 330603992  
Conc: 500.00 ng/ml