

Data Path : Z:\pestpcbsrv\HPCHEM1\ECD_P\Data\PP091922\
 Data File : PP051407.D
 Signal(s) : Signal #1: ECD1A.ch Signal #2: ECD2B.ch
 Acq On : 19 Sep 2022 13:43
 Operator : YP\AJ
 Sample : AR1248ICC250
 Misc :
 ALS Vial : 18 Sample Multiplier: 1

Instrument :
 ECD_P
ClientSampleId :
 AR1248ICC250

Integration File signal 1: autoint1.e
 Integration File signal 2: autoint2.e
 Quant Time: Sep 19 16:03:06 2022
 Quant Method : Z:\pestpcbsrv\HPCHEM1\ECD_P\methods\PP091922.M
 Quant Title : GC EXTRACTABLES
 QLast Update : Mon Sep 19 16:00:11 2022
 Response via : Initial Calibration
 Integrator: ChemStation

Volume Inj. : 2 µl
 Signal #1 Phase : ZB-MR2 Signal #2 Phase: ZB-MR2
 Signal #1 Info : 30Mx0.32mmx 0.50µ Signal #2 Info : 30M x 0.32mm x 0.25µm

Compound	RT#1	RT#2	Resp#1	Resp#2	ng/ml	ng/ml

System Monitoring Compounds						
1) SA Tetrachlo...	4.434	3.687	47534773	39947765	24.845	24.670
2) SA Decachlor...	10.260	8.790	41573044	32731184	25.545	25.720
Target Compounds						
21) L5 AR-1248-1	5.607	4.791	10734691	8659228	264.357	259.620
22) L5 AR-1248-2	5.883	5.032	15582681	12168355	268.855	263.349
23) L5 AR-1248-3	6.088	5.074	16979670	12643347	269.707	261.765
24) L5 AR-1248-4	6.494	5.249	16124579	14830378	256.303	261.741
25) L5 AR-1248-5	6.533	5.649	16311793	13954550	252.107	257.375

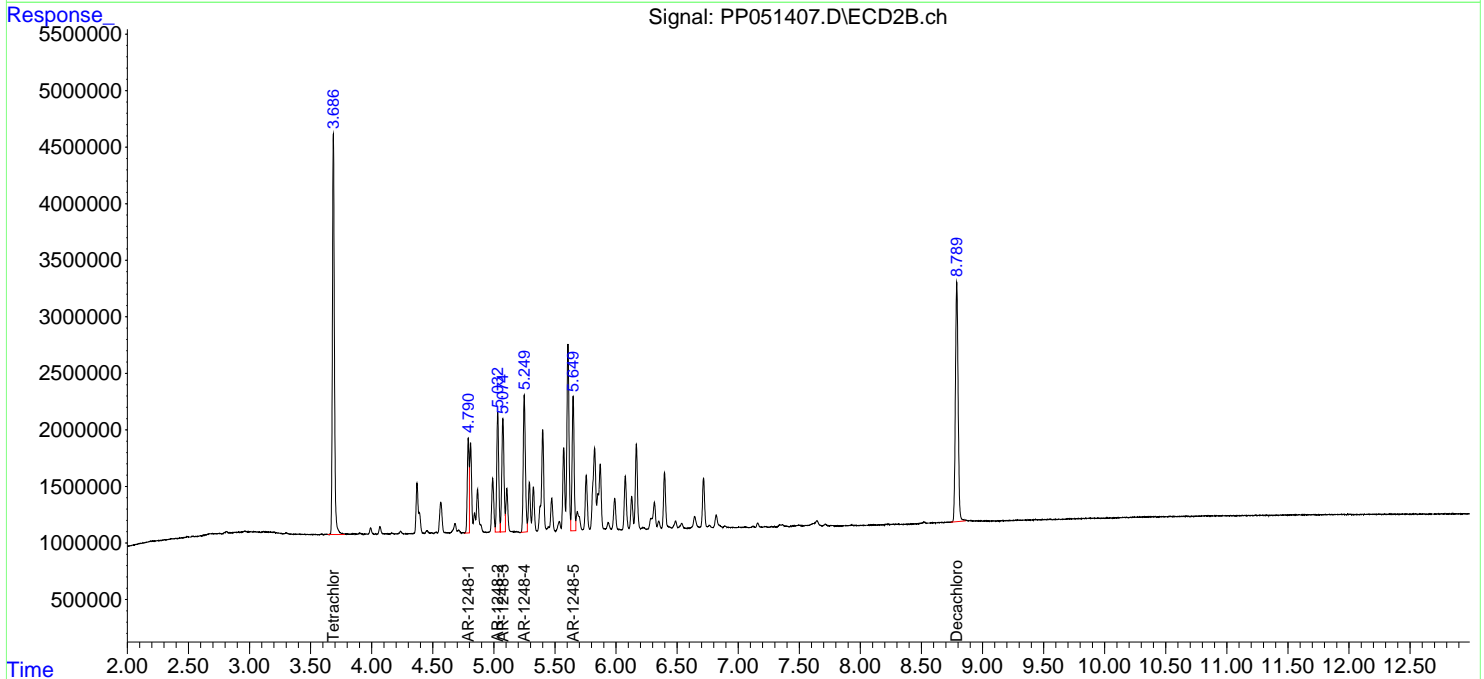
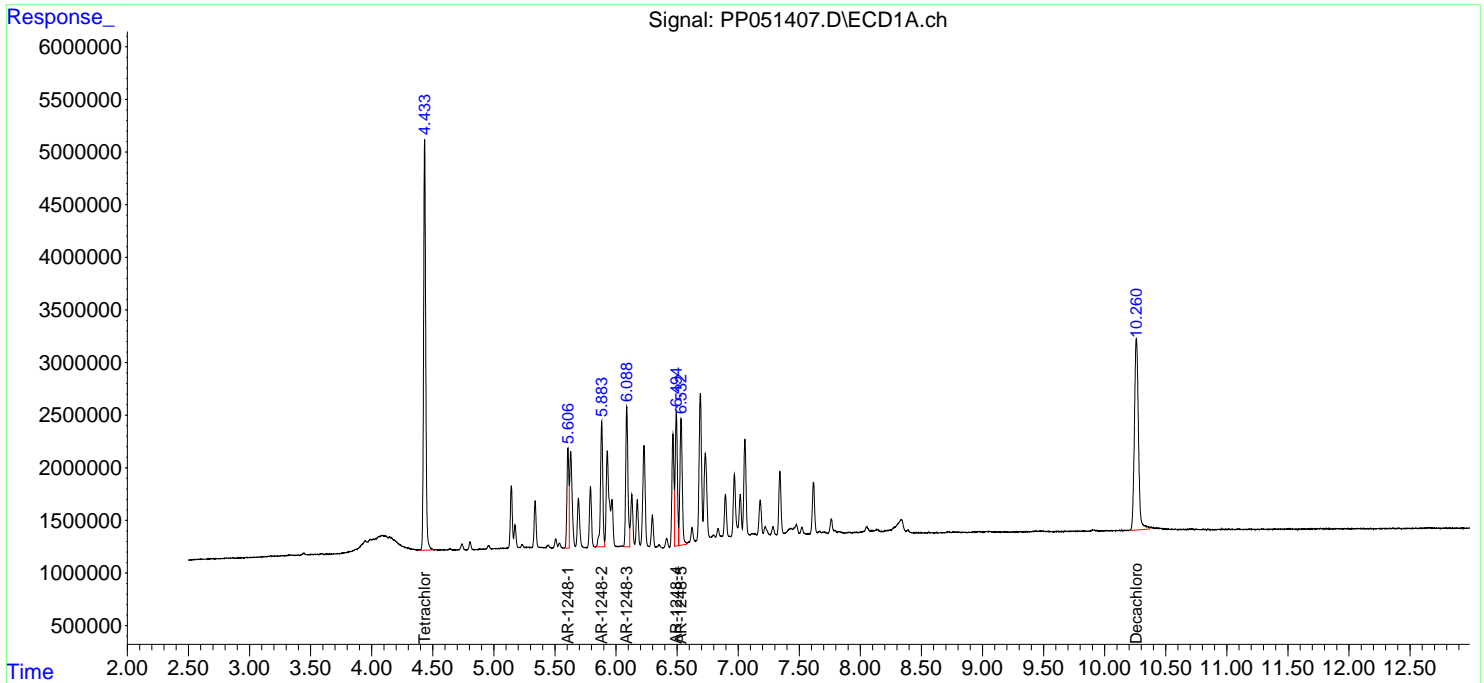
(f)=RT Delta > 1/2 Window (#)=Amounts differ by > 25% (m)=manual int.

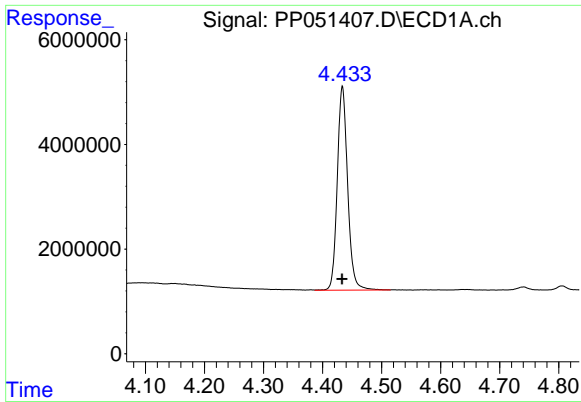
Data Path : Z:\pestpcbsrv\HPCHEM1\ECD_P\Data\PP091922\
 Data File : PP051407.D
 Signal(s) : Signal #1: ECD1A.ch Signal #2: ECD2B.ch
 Acq On : 19 Sep 2022 13:43
 Operator : YP\AJ
 Sample : AR1248ICC250
 Misc :
 ALS Vial : 18 Sample Multiplier: 1

Instrument :
 ECD_P
 ClientSampleId :
 AR1248ICC250

Integration File signal 1: autoint1.e
 Integration File signal 2: autoint2.e
 Quant Time: Sep 19 16:03:06 2022
 Quant Method : Z:\pestpcbsrv\HPCHEM1\ECD_P\methods\PP091922.M
 Quant Title : GC EXTRACTABLES
 QLast Update : Mon Sep 19 16:00:11 2022
 Response via : Initial Calibration
 Integrator: ChemStation

Volume Inj. : 2 µl
 Signal #1 Phase : ZB-MR1 Signal #2 Phase: ZB-MR2
 Signal #1 Info : 30Mx0.32mmx 0.50µ Signal #2 Info : 30M x 0.32mm x 0.25µm

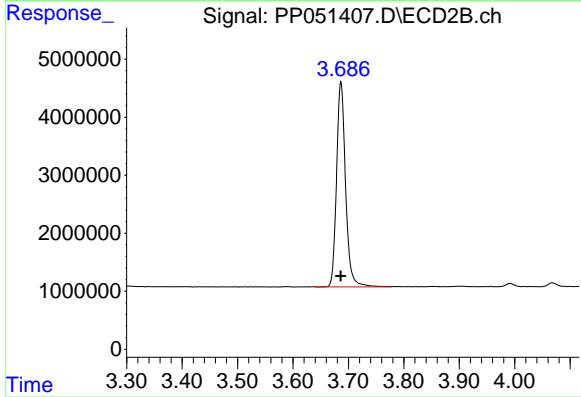




#1 Tetrachloro-m-xylene

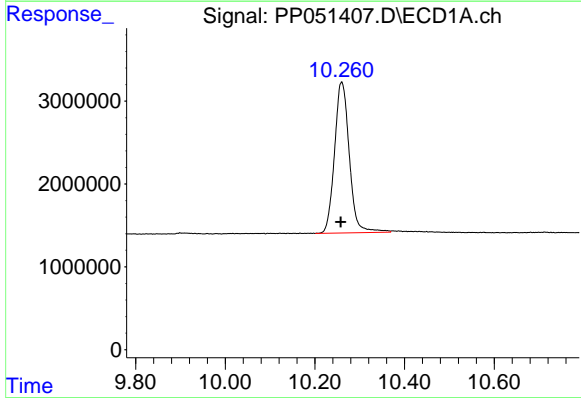
R.T.: 4.434 min
 Delta R.T.: 0.000 min
 Response: 47534773
 Conc: 24.85 ng/ml

Instrument :
 ECD_P
 ClientSampleId :
 AR1248ICC250



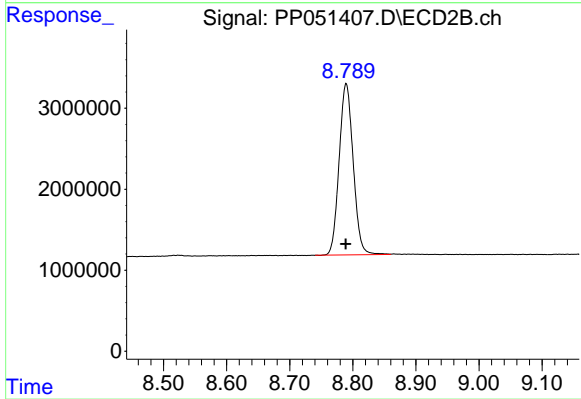
#1 Tetrachloro-m-xylene

R.T.: 3.687 min
 Delta R.T.: 0.000 min
 Response: 39947765
 Conc: 24.67 ng/ml



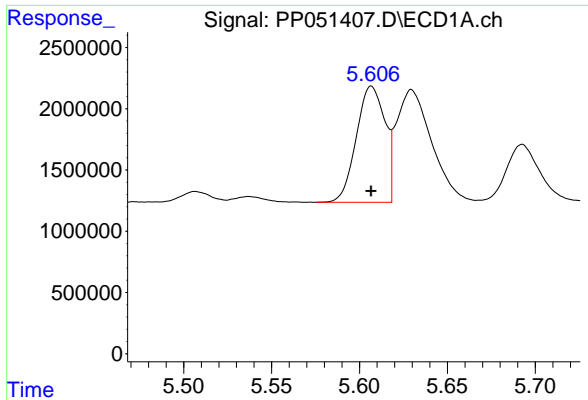
#2 Decachlorobiphenyl

R.T.: 10.260 min
 Delta R.T.: 0.002 min
 Response: 41573044
 Conc: 25.55 ng/ml



#2 Decachlorobiphenyl

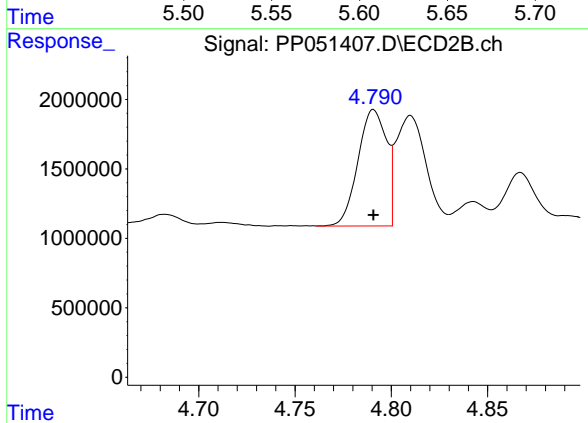
R.T.: 8.790 min
 Delta R.T.: 0.000 min
 Response: 32731184
 Conc: 25.72 ng/ml



#21 AR-1248-1

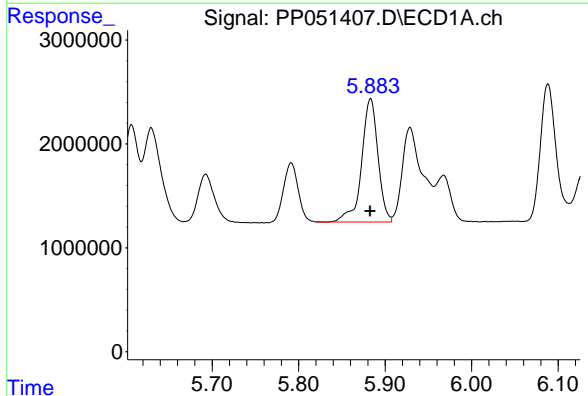
R.T.: 5.607 min
 Delta R.T.: 0.000 min
 Response: 10734691
 Conc: 264.36 ng/ml

Instrument :
 ECD_P
 ClientSampleId :
 AR1248ICC250



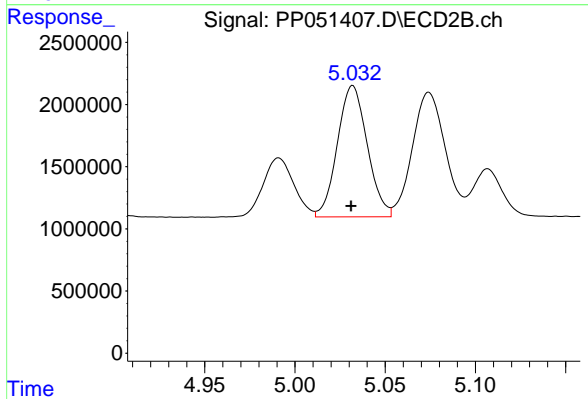
#21 AR-1248-1

R.T.: 4.791 min
 Delta R.T.: 0.000 min
 Response: 8659228
 Conc: 259.62 ng/ml



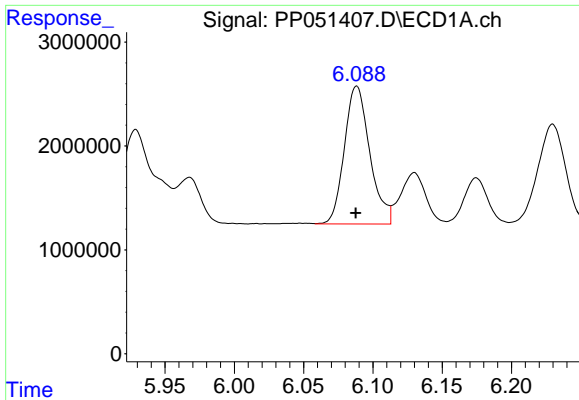
#22 AR-1248-2

R.T.: 5.883 min
 Delta R.T.: 0.000 min
 Response: 15582681
 Conc: 268.86 ng/ml



#22 AR-1248-2

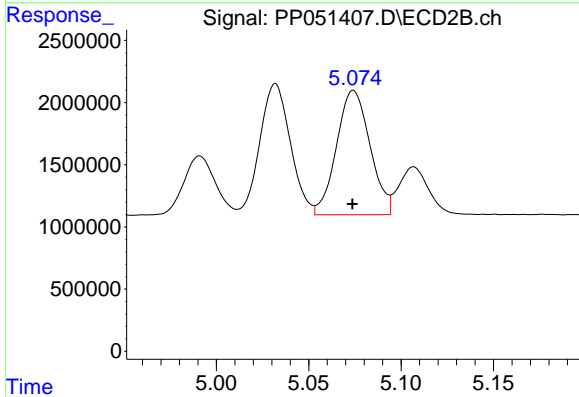
R.T.: 5.032 min
 Delta R.T.: 0.000 min
 Response: 12168355
 Conc: 263.35 ng/ml



#23 AR-1248-3

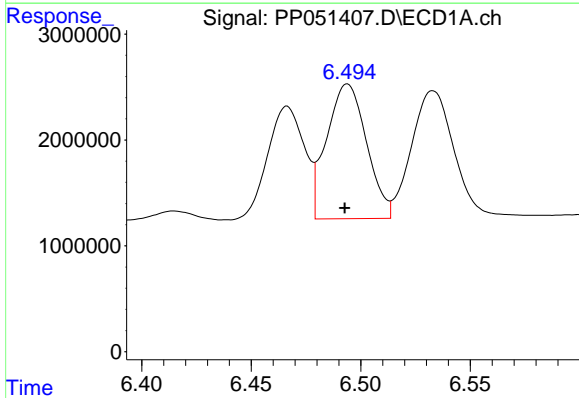
R.T.: 6.088 min
 Delta R.T.: 0.000 min
 Response: 16979670
 Conc: 269.71 ng/ml

Instrument :
 ECD_P
 ClientSampleId :
 AR1248ICC250



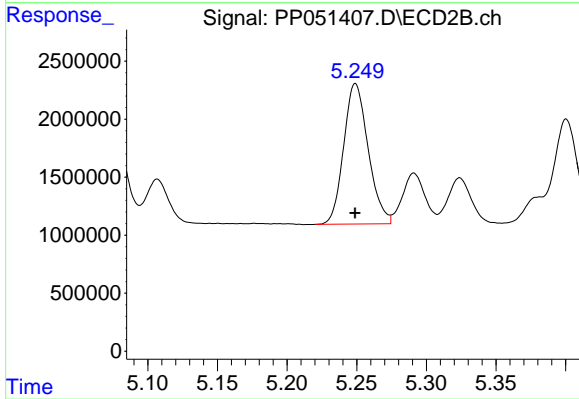
#23 AR-1248-3

R.T.: 5.074 min
 Delta R.T.: 0.000 min
 Response: 12643347
 Conc: 261.77 ng/ml



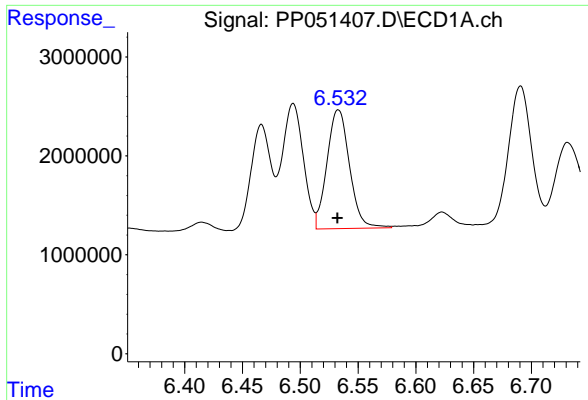
#24 AR-1248-4

R.T.: 6.494 min
 Delta R.T.: 0.001 min
 Response: 16124579
 Conc: 256.30 ng/ml



#24 AR-1248-4

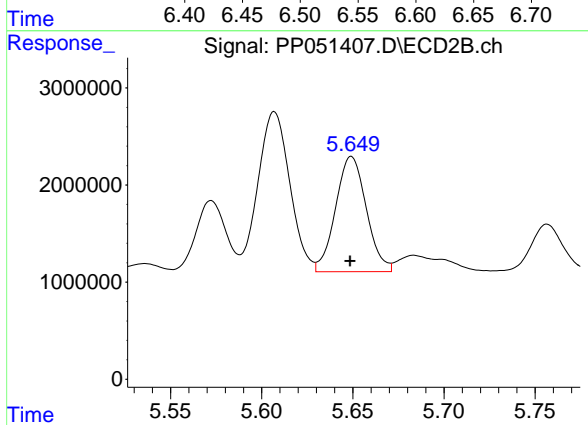
R.T.: 5.249 min
 Delta R.T.: 0.000 min
 Response: 14830378
 Conc: 261.74 ng/ml



#25 AR-1248-5

R.T.: 6.533 min
Delta R.T.: 0.001 min
Response: 16311793
Conc: 252.11 ng/ml

Instrument :
ECD_P
ClientSampleId :
AR1248ICC250



#25 AR-1248-5

R.T.: 5.649 min
Delta R.T.: 0.000 min
Response: 13954550
Conc: 257.37 ng/ml