

Data Path : Z:\pestpcbsrv\HPCHEM1\ECD_P\Data\PP092022\
 Data File : PP051476.D
 Signal(s) : Signal #1: ECD1A.ch Signal #2: ECD2B.ch
 Acq On : 20 Sep 2022 19:51
 Operator : YP\AJ
 Sample : AR1660CCC500
 Misc : PP20783
 ALS Vial : 3 Sample Multiplier: 1

Instrument :
 ECD_P
 ClientSampleId :
 AR1660CCC500

Integration File signal 1: autoint1.e
 Integration File signal 2: autoint2.e
 Quant Time: Sep 21 08:34:55 2022
 Quant Method : Z:\pestpcbsrv\HPCHEM1\ECD_P\methods\PP091922.M
 Quant Title : GC EXTRACTABLES
 QLast Update : Tue Sep 20 14:37:22 2022
 Response via : Initial Calibration
 Integrator: ChemStation

Volume Inj. : 2 µl
 Signal #1 Phase : ZB-MR1 Signal #2 Phase: ZB-MR2
 Signal #1 Info : 30Mx0.32mmx 0.50µ Signal #2 Info : 30M x 0.32mm x 0.25µm

Compound	RT#1	RT#2	Resp#1	Resp#2	ng/ml	ng/ml

System Monitoring Compounds						
1) SA Tetrachlo...	4.433	3.682	87980589	72129403	49.509	47.751
2) SA Decachlor...	10.262	8.786	60989805	55858185	39.464	46.618
Target Compounds						
3) L1 AR-1016-1	5.607	4.786	29041807	23493615	471.250	471.398
4) L1 AR-1016-2	5.630	4.805	39153730	33768581	452.749	473.023
5) L1 AR-1016-3	5.693	4.985	24410718	17817063	446.141	474.503
6) L1 AR-1016-4	5.792	5.027	19300604	13849435	453.303	455.655
7) L1 AR-1016-5	6.089	5.245	17760279	18728549	390.205	472.445
31) L7 AR-1260-1	7.221	6.294	39643105	33831252	424.652	453.418
32) L7 AR-1260-2	7.480	6.483	45212072	40611200	428.215	459.311
33) L7 AR-1260-3	7.840	6.640	34128607	38121698	441.823	449.495
34) L7 AR-1260-4	8.067	7.118	37577709	30421899	423.455	453.751
35) L7 AR-1260-5	8.391	7.360	63953935	66589479	415.700	450.715

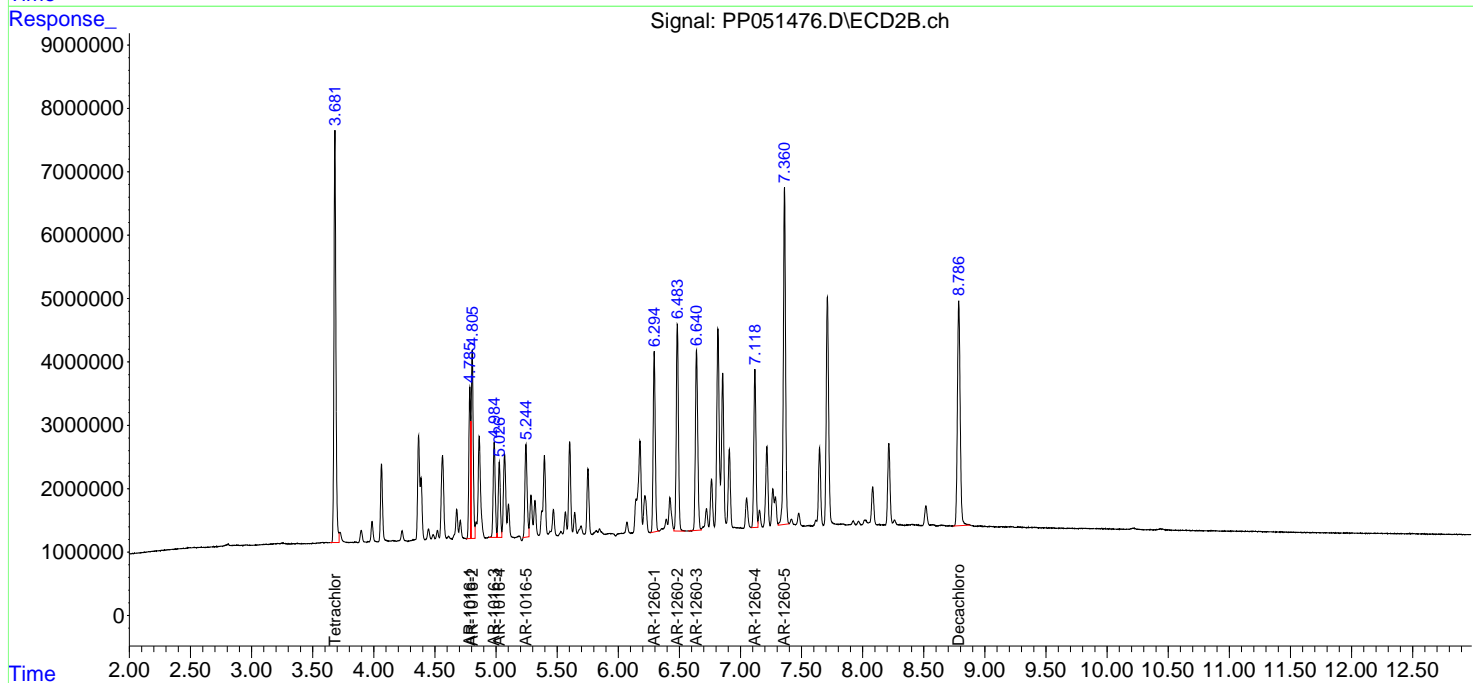
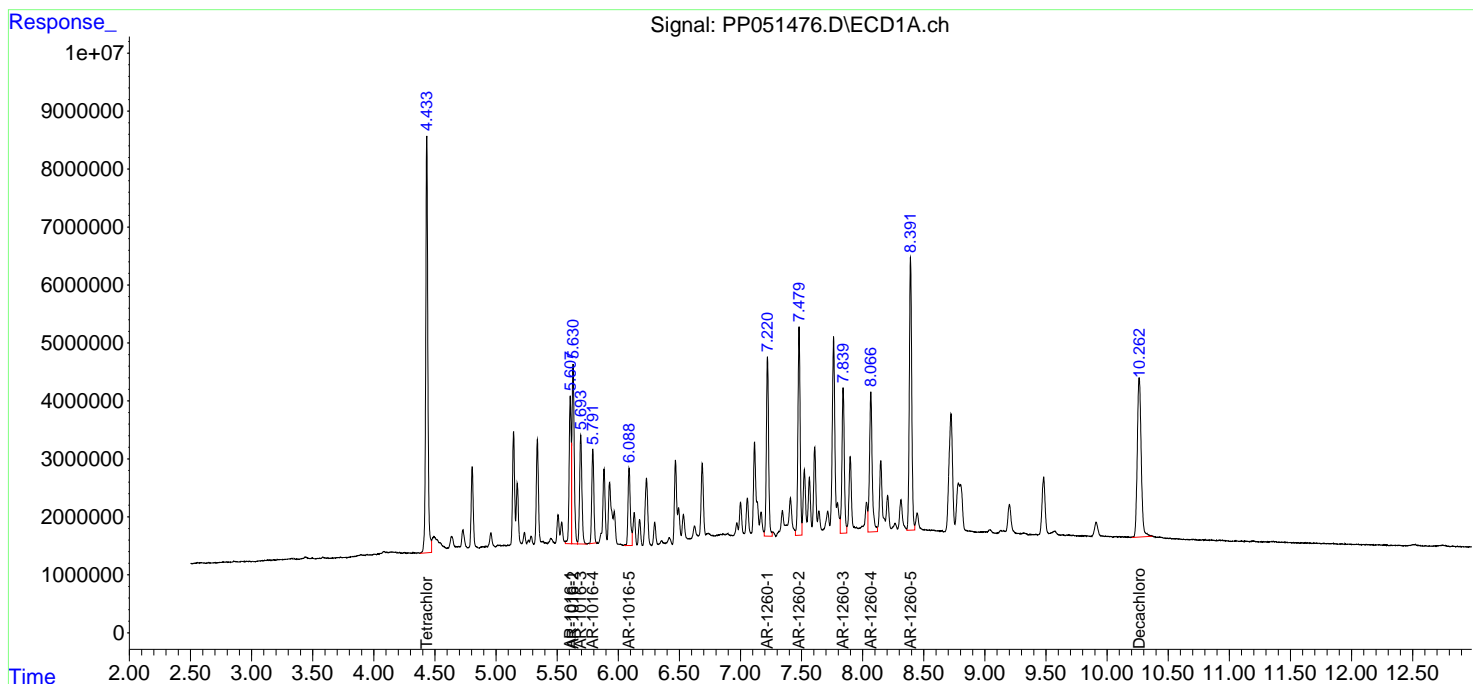
(f)=RT Delta > 1/2 Window (#)=Amounts differ by > 25% (m)=manual int.

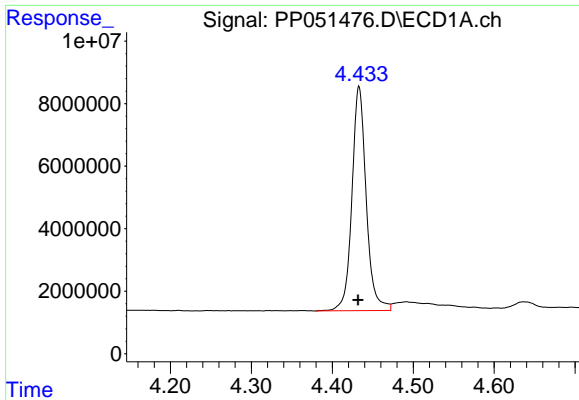
Data Path : Z:\pestpcbsrv\HPCHEM1\ECD_P\Data\PP092022\
 Data File : PP051476.D
 Signal(s) : Signal #1: ECD1A.ch Signal #2: ECD2B.ch
 Acq On : 20 Sep 2022 19:51
 Operator : YP\AJ
 Sample : AR1660CCC500
 Misc : PP20783
 ALS Vial : 3 Sample Multiplier: 1

Instrument :
 ECD_P
 ClientSampleId :
 AR1660CCC500

Integration File signal 1: autoint1.e
 Integration File signal 2: autoint2.e
 Quant Time: Sep 21 08:34:55 2022
 Quant Method : Z:\pestpcbsrv\HPCHEM1\ECD_P\methods\PP091922.M
 Quant Title : GC EXTRACTABLES
 QLast Update : Tue Sep 20 14:37:22 2022
 Response via : Initial Calibration
 Integrator: ChemStation

Volume Inj. : 2 µl
 Signal #1 Phase : ZB-MR1 Signal #2 Phase: ZB-MR2
 Signal #1 Info : 30Mx0.32mmx 0.50µ Signal #2 Info : 30M x 0.32mm x 0.25µm

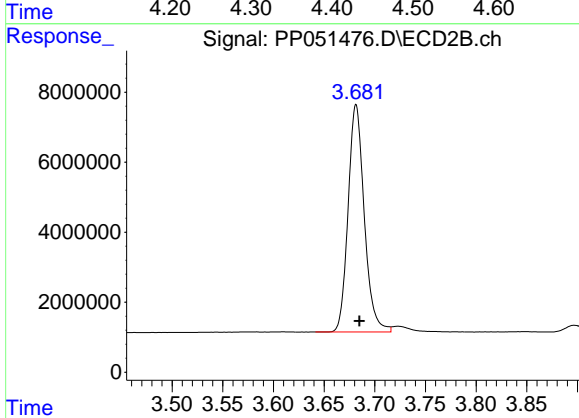




#1 Tetrachloro-m-xylene

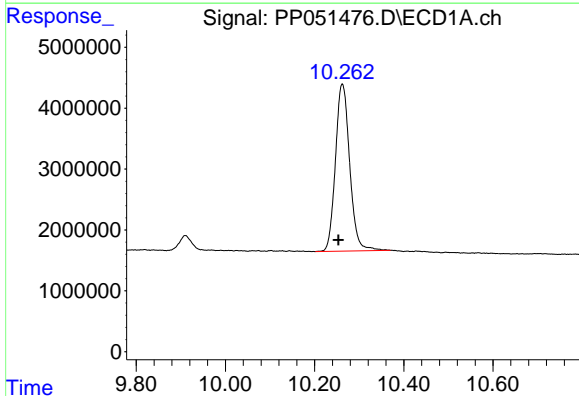
R.T.: 4.433 min
 Delta R.T.: 0.001 min
 Response: 87980589
 Conc: 49.51 ng/ml

Instrument :
 ECD_P
 ClientSampleId :
 AR1660CCC500



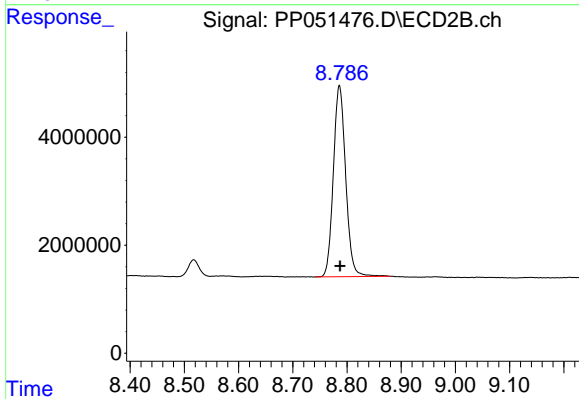
#1 Tetrachloro-m-xylene

R.T.: 3.682 min
 Delta R.T.: -0.003 min
 Response: 72129403
 Conc: 47.75 ng/ml



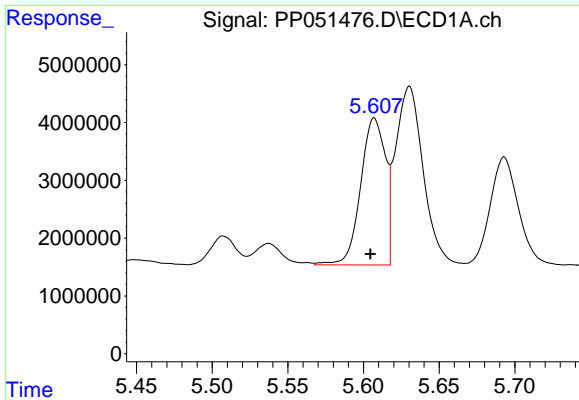
#2 Decachlorobiphenyl

R.T.: 10.262 min
 Delta R.T.: 0.008 min
 Response: 60989805
 Conc: 39.46 ng/ml



#2 Decachlorobiphenyl

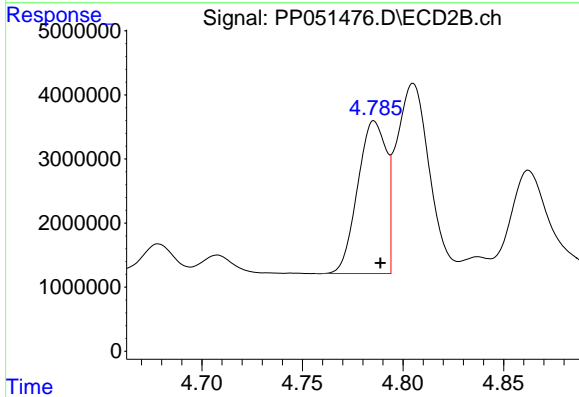
R.T.: 8.786 min
 Delta R.T.: 0.000 min
 Response: 55858185
 Conc: 46.62 ng/ml



#3 AR-1016-1

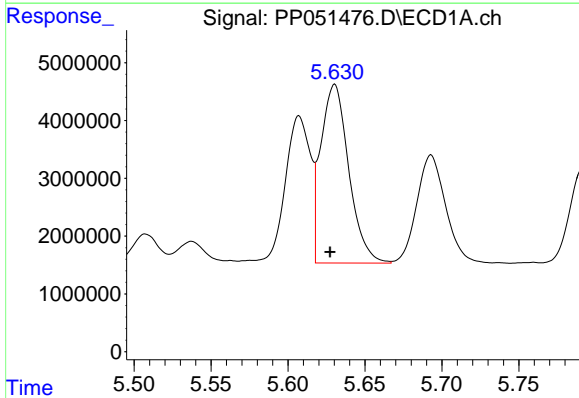
R.T.: 5.607 min
 Delta R.T.: 0.002 min
 Response: 29041807
 Conc: 471.25 ng/ml

Instrument :
 ECD_P
 ClientSampleId :
 AR1660CCC500



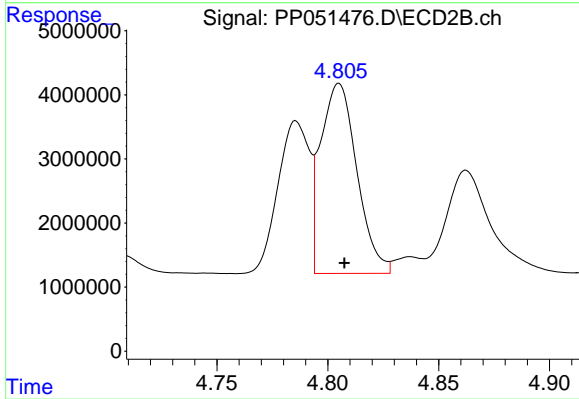
#3 AR-1016-1

R.T.: 4.786 min
 Delta R.T.: -0.003 min
 Response: 23493615
 Conc: 471.40 ng/ml



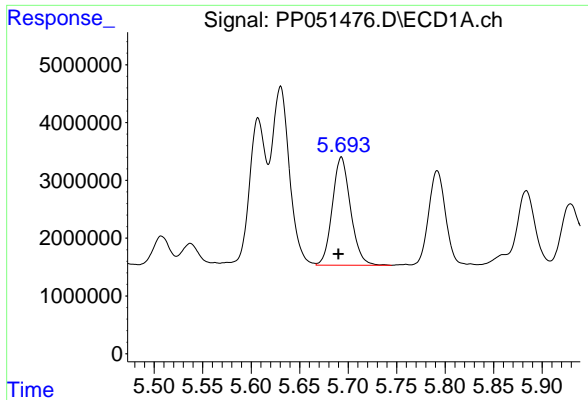
#4 AR-1016-2

R.T.: 5.630 min
 Delta R.T.: 0.003 min
 Response: 39153730
 Conc: 452.75 ng/ml



#4 AR-1016-2

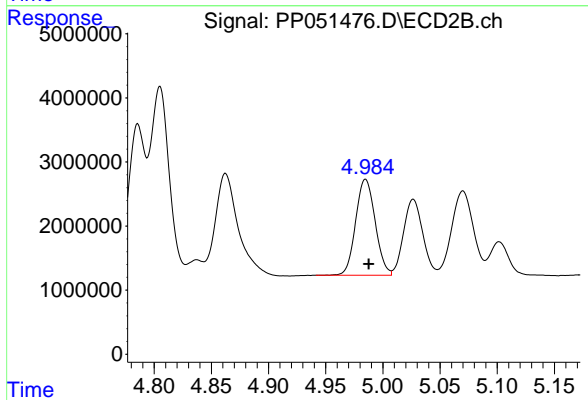
R.T.: 4.805 min
 Delta R.T.: -0.003 min
 Response: 33768581
 Conc: 473.02 ng/ml



#5 AR-1016-3

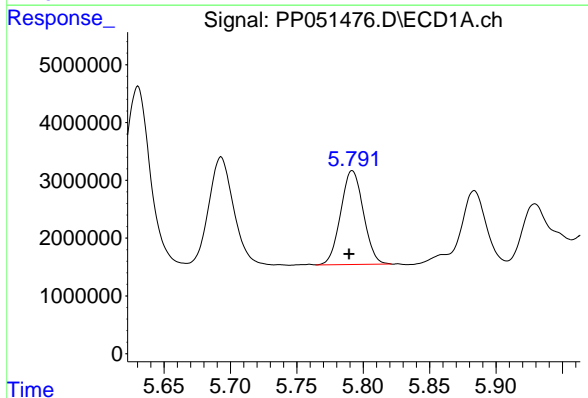
R.T.: 5.693 min
Delta R.T.: 0.003 min
Response: 24410718
Conc: 446.14 ng/ml

Instrument :
ECD_P
ClientSampleId :
AR1660CCC500



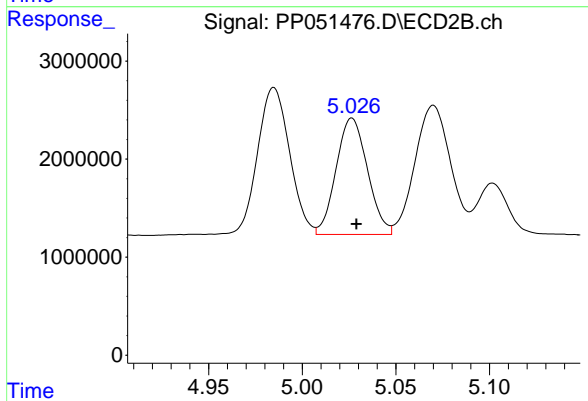
#5 AR-1016-3

R.T.: 4.985 min
Delta R.T.: -0.003 min
Response: 17817063
Conc: 474.50 ng/ml



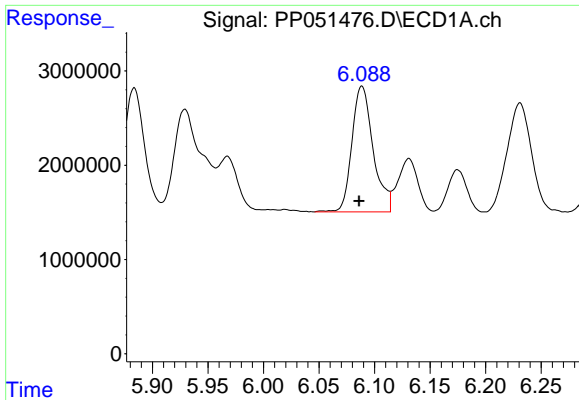
#6 AR-1016-4

R.T.: 5.792 min
Delta R.T.: 0.002 min
Response: 19300604
Conc: 453.30 ng/ml



#6 AR-1016-4

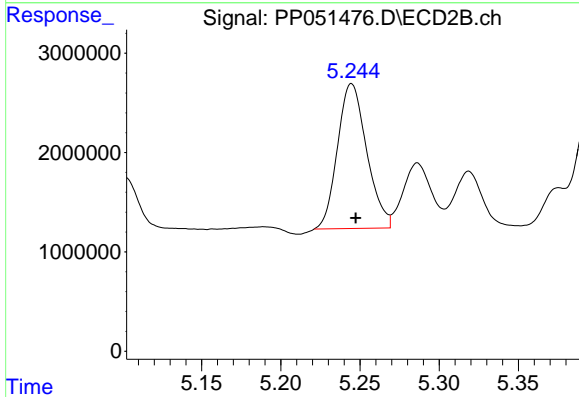
R.T.: 5.027 min
Delta R.T.: -0.002 min
Response: 13849435
Conc: 455.66 ng/ml



#7 AR-1016-5

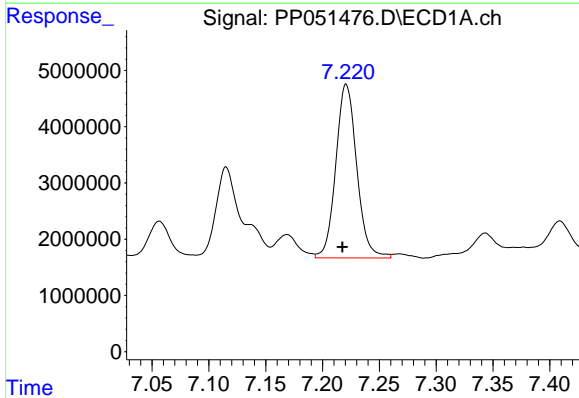
R.T.: 6.089 min
 Delta R.T.: 0.002 min
 Response: 17760279
 Conc: 390.20 ng/ml

Instrument :
 ECD_P
 ClientSampleId :
 AR1660CCC500



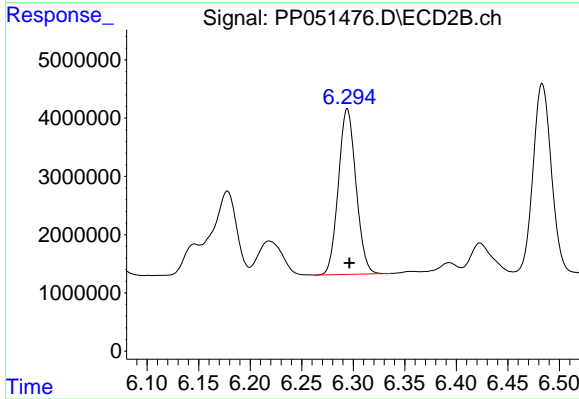
#7 AR-1016-5

R.T.: 5.245 min
 Delta R.T.: -0.003 min
 Response: 18728549
 Conc: 472.44 ng/ml



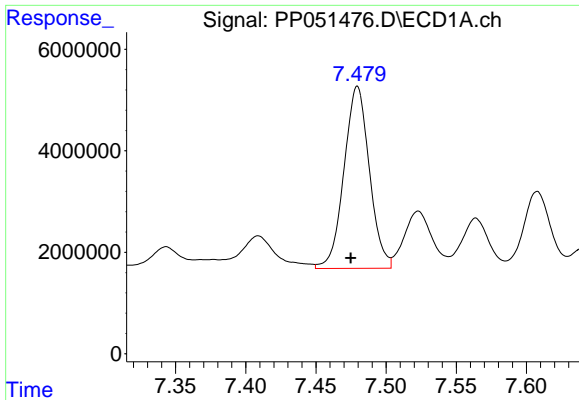
#31 AR-1260-1

R.T.: 7.221 min
 Delta R.T.: 0.003 min
 Response: 39643105
 Conc: 424.65 ng/ml



#31 AR-1260-1

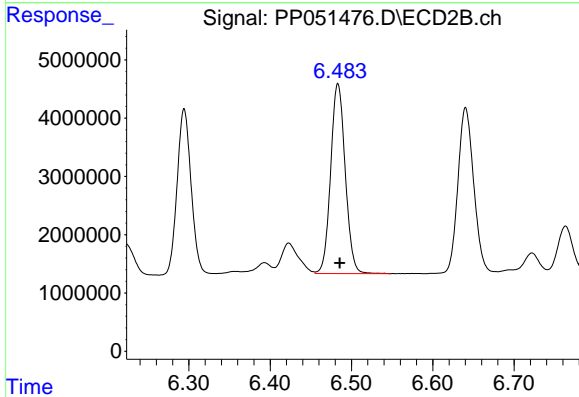
R.T.: 6.294 min
 Delta R.T.: -0.002 min
 Response: 33831252
 Conc: 453.42 ng/ml



#32 AR-1260-2

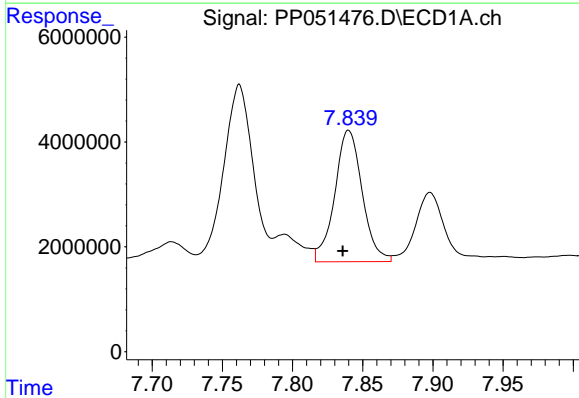
R.T.: 7.480 min
 Delta R.T.: 0.005 min
 Response: 45212072
 Conc: 428.22 ng/ml

Instrument :
 ECD_P
 ClientSampleId :
 AR1660CCC500



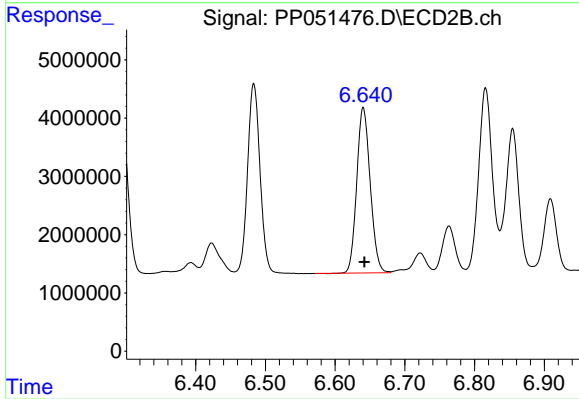
#32 AR-1260-2

R.T.: 6.483 min
 Delta R.T.: -0.002 min
 Response: 40611200
 Conc: 459.31 ng/ml



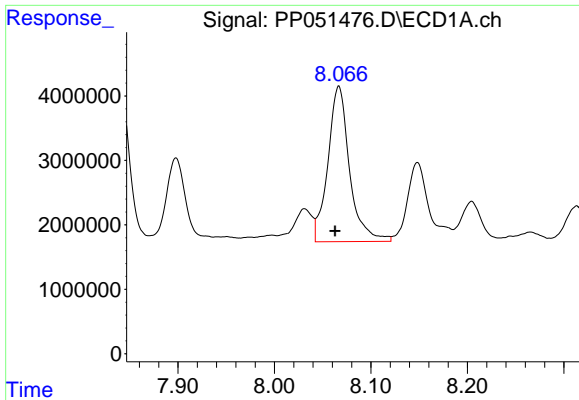
#33 AR-1260-3

R.T.: 7.840 min
 Delta R.T.: 0.004 min
 Response: 34128607
 Conc: 441.82 ng/ml



#33 AR-1260-3

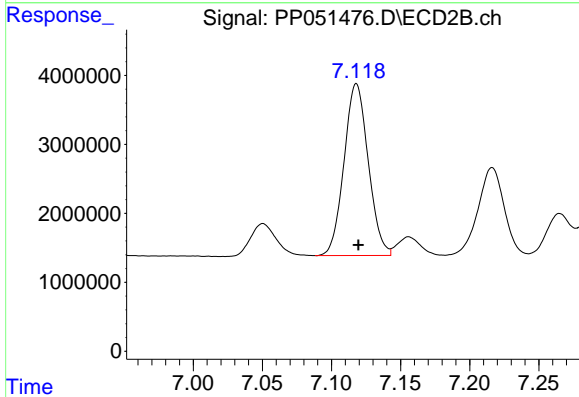
R.T.: 6.640 min
 Delta R.T.: -0.002 min
 Response: 38121698
 Conc: 449.49 ng/ml



#34 AR-1260-4

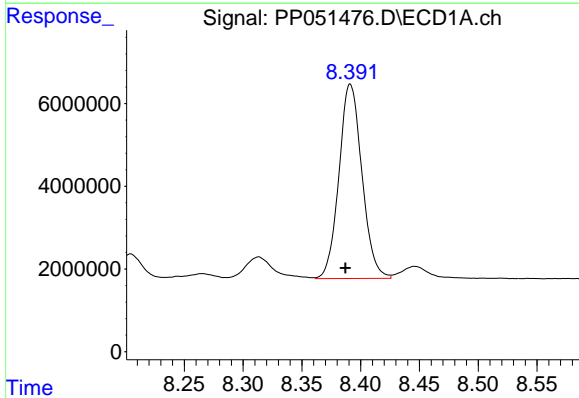
R.T.: 8.067 min
 Delta R.T.: 0.004 min
 Response: 37577709
 Conc: 423.45 ng/ml

Instrument :
 ECD_P
 ClientSampleId :
 AR1660CCC500



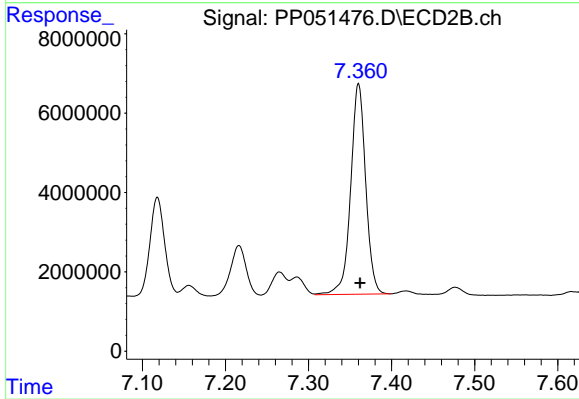
#34 AR-1260-4

R.T.: 7.118 min
 Delta R.T.: -0.002 min
 Response: 30421899
 Conc: 453.75 ng/ml



#35 AR-1260-5

R.T.: 8.391 min
 Delta R.T.: 0.004 min
 Response: 63953935
 Conc: 415.70 ng/ml



#35 AR-1260-5

R.T.: 7.360 min
 Delta R.T.: -0.002 min
 Response: 66589479
 Conc: 450.71 ng/ml