

Data Path : Z:\pestpcbsrv\HPCHEM1\ECD_P\Data\PP092023\
 Data File : PP060043.D
 Signal(s) : Signal #1: ECD1A.ch Signal #2: ECD2B.ch
 Acq On : 20 Sep 2023 20:48
 Operator : YP\AJ
 Sample : 04510-02
 Misc :
 ALS Vial : 20 Sample Multiplier: 1

Instrument :
 ECD_P
 ClientSampleId :

Integration File signal 1: autoint1.e
 Integration File signal 2: autoint2.e
 Quant Time: Sep 21 02:27:36 2023
 Quant Method : Z:\pestpcbsrv\HPCHEM1\ECD_P\methods\PP091823.M
 Quant Title : GC EXTRACTABLES
 QLast Update : Tue Sep 19 09:22:53 2023
 Response via : Initial Calibration
 Integrator: ChemStation

Volume Inj. : 2 µl
 Signal #1 Phase : ZB-MR1 Signal #2 Phase: ZB-MR2
 Signal #1 Info : 30Mx0.32mmx 0.50µ Signal #2 Info : 30M x 0.32mm x 0.25µm

Compound	RT#1	RT#2	Resp#1	Resp#2	ng/ml	ng/ml

System Monitoring Compounds						
1) SA Tetrachlo...	4.509	3.668	24510946	22249765	11.783	13.660
2) SA Decachlor...	10.429	8.741	30060851	27895380	19.708	18.423
Target Compounds						
3) L1 AR-1016-1	5.698	4.769	968.1E6	779.5E6	14347.243	12966.070
4) L1 AR-1016-2	5.721	4.788	1405.9E6	1140.7E6	14696.890	13743.385
5) L1 AR-1016-3	5.784	4.966	902.2E6	663.2E6	15157.751	14785.060
6) L1 AR-1016-4	5.885	5.009	790.6E6	414.0E6	16146.764	11735.122 #
7) L1 AR-1016-5	6.184	5.224	850.2E6	746.8E6	17291.224	16062.221
8) L2 AR-1221-1	4.718	3.884	50021418	31779055	1881.696	1446.814
9) L2 AR-1221-2	4.807	3.972	60287461	34401785	3062.912	2228.252 #
10) L2 AR-1221-3	4.886	4.049	234.9E6	186.3E6	4112.628	3972.279
11) L3 AR-1232-1	4.886	4.049	234.9E6	186.3E6	5035.041	4901.216
12) L3 AR-1232-2	5.426	4.788	417.4E6	1140.7E6	16435.286	30936.506 #
13) L3 AR-1232-3	5.721	4.966	1405.9E6	663.2E6	32541.955	33123.237
14) L3 AR-1232-4	5.885	5.051	790.6E6	519.8E6	35771.159	28455.032
15) L3 AR-1232-5	5.976	5.224	527.2E6	746.8E6	28739.258	37250.096 #
16) L4 AR-1242-1	5.698	4.769	968.1E6	779.5E6	16208.789	14801.518
17) L4 AR-1242-2	5.721	4.788	1405.9E6	1140.7E6	16729.757	15830.991
18) L4 AR-1242-3	5.784	4.966	902.2E6	663.2E6	17250.648	16948.159
19) L4 AR-1242-4	5.885	5.051	790.6E6	519.8E6	18347.828	13263.135 #
20) L4 AR-1242-5	6.632	5.580	704.5E6	842.7E6	15409.519	17418.812
21) L5 AR-1248-1	5.698	4.769	968.1E6	779.5E6	21658.910	19949.063
22) L5 AR-1248-2	5.976	5.009	527.2E6	414.0E6	8140.839	7640.730
23) L5 AR-1248-3	6.184	5.051	850.2E6	519.8E6	12004.272	9134.938
24) L5 AR-1248-4	6.593	5.224	735.8E6	746.8E6	9513.737	11119.720
25) L5 AR-1248-5	6.632	5.622	704.5E6	594.9E6	9363.538	9019.173
26) L6 AR-1254-1	6.565	5.580	610.0E6	842.7E6	7640.753	8397.256
27) L6 AR-1254-2	6.790	5.729	660.1E6	224.1E6	5511.492	2579.681 #
28) L6 AR-1254-3	7.158	6.138	212.0E6	240.9E6	1745.212	1715.967
29) L6 AR-1254-4	7.446	6.366	97897813	60427618	1100.833	717.876 #
30) L6 AR-1254-5	7.868	6.787	521.1E6	463.8E6	5357.428	3909.685 #
31) L7 AR-1260-1	7.324	6.268	492.8E6	515.4E6	5467.224	5535.207
32) L7 AR-1260-2	7.583	6.457	466.6E6	428.3E6	4548.285	3906.359
33) L7 AR-1260-3	7.946	6.612	265.2E6	462.7E6	3366.812	4498.507 #
34) L7 AR-1260-4	8.177	7.088	300.9E6	250.0E6	3357.855	3002.255
35) L7 AR-1260-5	8.510	7.330	342.1E6	358.6E6	2004.818	1863.703
36) L8 AR-1262-1	7.946	6.880	265.2E6	128.5E6	2291.171	2545.118
37) L8 AR-1262-2	8.510	7.088	342.1E6	250.0E6	1709.087	2213.236 #
38) L8 AR-1262-3	8.852	7.617	183.3E6	50144618	1273.153	572.074 #
39) L8 AR-1262-4	8.929	7.680	39176048	201.3E6	344.992	1232.361 #
40) L8 AR-1262-5	9.625	8.180	41770259	33099203	559.902	443.432
41) L9 AR-1268-1	8.852	7.617	183.3E6	50144618	731.124	192.600 #

Data Path : Z:\pestpcbsrv\HPCHEM1\ECD_P\Data\PP092023\
 Data File : PP060043.D
 Signal(s) : Signal #1: ECD1A.ch Signal #2: ECD2B.ch
 Acq On : 20 Sep 2023 20:48
 Operator : YP\AJ
 Sample : 04510-02
 Misc :
 ALS Vial : 20 Sample Multiplier: 1

Instrument :
 ECD_P
 ClientSampleId :

Integration File signal 1: autoint1.e
 Integration File signal 2: autoint2.e
 Quant Time: Sep 21 02:27:36 2023
 Quant Method : Z:\pestpcbsrv\HPCHEM1\ECD_P\methods\PP091823.M
 Quant Title : GC EXTRACTABLES
 QLast Update : Tue Sep 19 09:22:53 2023
 Response via : Initial Calibration
 Integrator: ChemStation

Volume Inj. : 2 µl
 Signal #1 Phase : ZB-MR1 Signal #2 Phase: ZB-MR2
 Signal #1 Info : 30Mx0.32mmx 0.50µ Signal #2 Info : 30M x 0.32mm x 0.25µm

	Compound	RT#1	RT#2	Resp#1	Resp#2	ng/ml	ng/ml
42)	L9 AR-1268-2	8.929	7.680	39176048	201.3E6	170.700	870.508 #
43)	L9 AR-1268-3	9.177	7.891	2021939	1876986	10.247	9.193
44)	L9 AR-1268-4	9.625	8.180	41770259	33099203	504.308	409.926
45)	L9 AR-1268-5	10.067	8.478	8972068	7891693	14.824	12.494

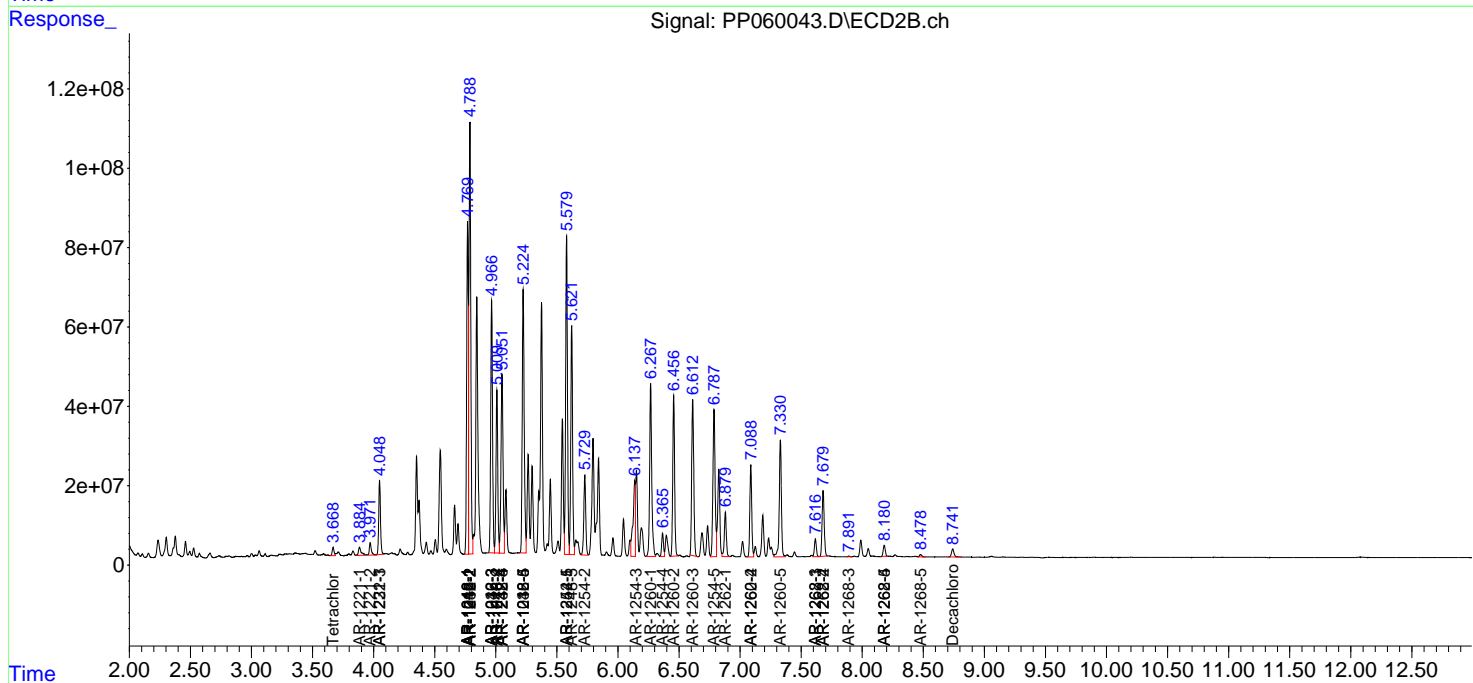
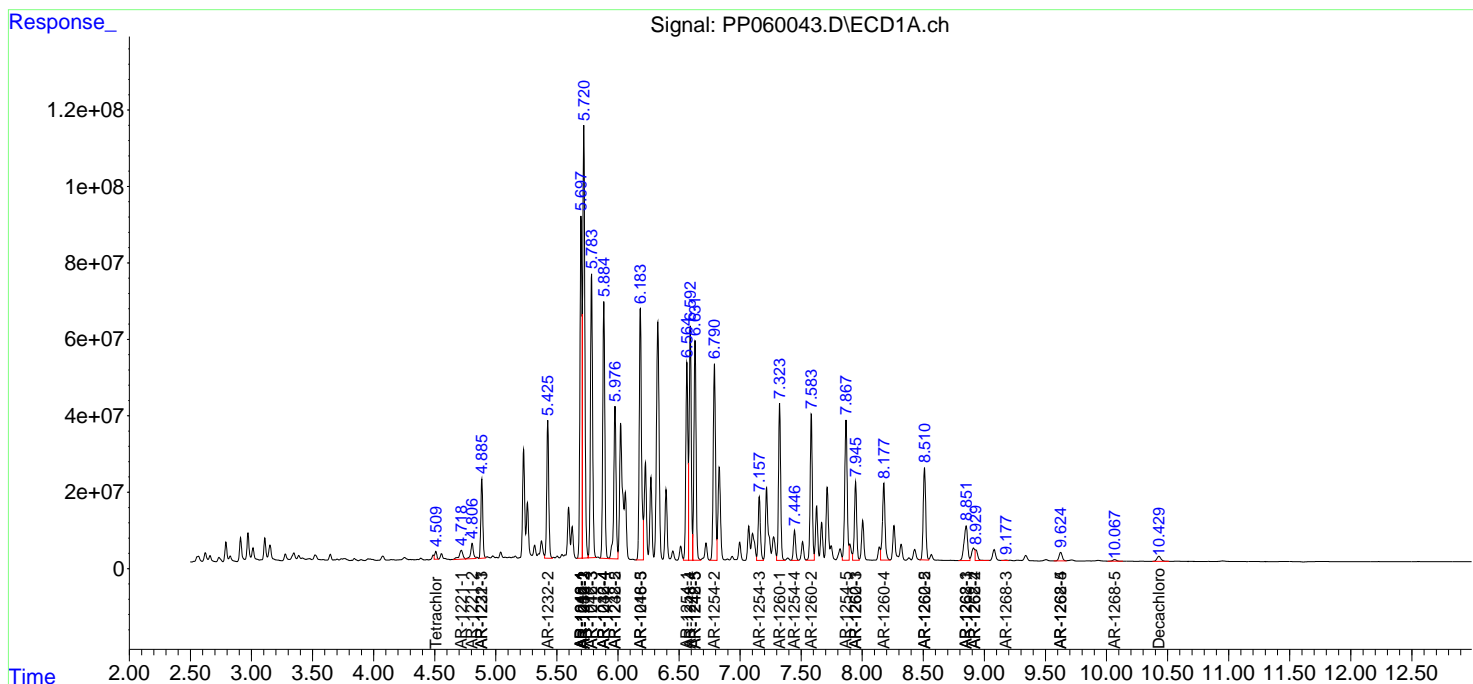
(f)=RT Delta > 1/2 Window (#)=Amounts differ by > 25% (m)=manual int.

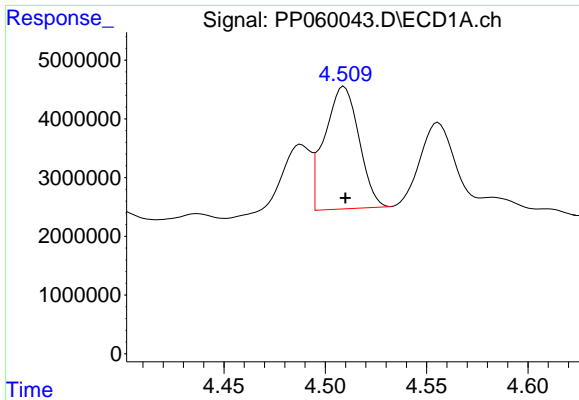
Data Path : Z:\pestpcbsrv\HPCHEM1\ECD_P\Data\PP092023\
 Data File : PP060043.D
 Signal(s) : Signal #1: ECD1A.ch Signal #2: ECD2B.ch
 Acq On : 20 Sep 2023 20:48
 Operator : YP\AJ
 Sample : 04510-02
 Misc :
 ALS Vial : 20 Sample Multiplier: 1

Instrument :
 ECD_P
 ClientSampleId :

Integration File signal 1: autoint1.e
 Integration File signal 2: autoint2.e
 Quant Time: Sep 21 02:27:36 2023
 Quant Method : Z:\pestpcbsrv\HPCHEM1\ECD_P\methods\PP091823.M
 Quant Title : GC EXTRACTABLES
 QLast Update : Tue Sep 19 09:22:53 2023
 Response via : Initial Calibration
 Integrator: ChemStation

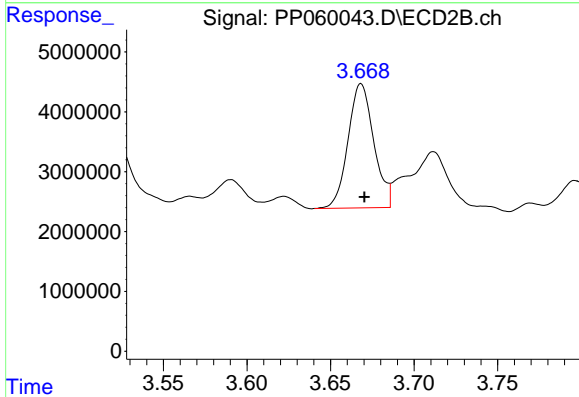
Volume Inj. : 2 µl
 Signal #1 Phase : ZB-MR1 Signal #2 Phase: ZB-MR2
 Signal #1 Info : 30Mx0.32mmx 0.50µ Signal #2 Info : 30M x 0.32mm x 0.25µm



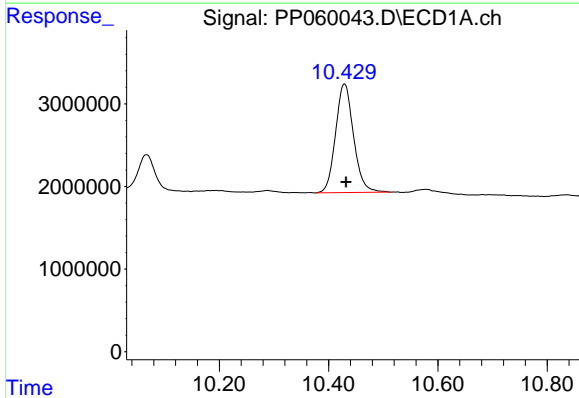


#1 Tetrachloro-m-xylene
 R.T.: 4.509 min
 Delta R.T.: 0.000 min
 Response: 24510946
 Conc: 11.78 ng/ml

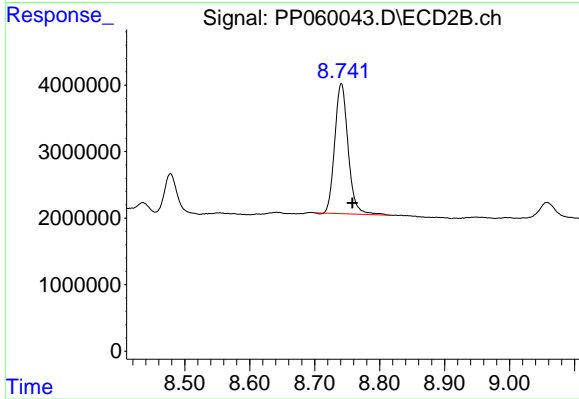
Instrument :
 ECD_P
 ClientSampleId :



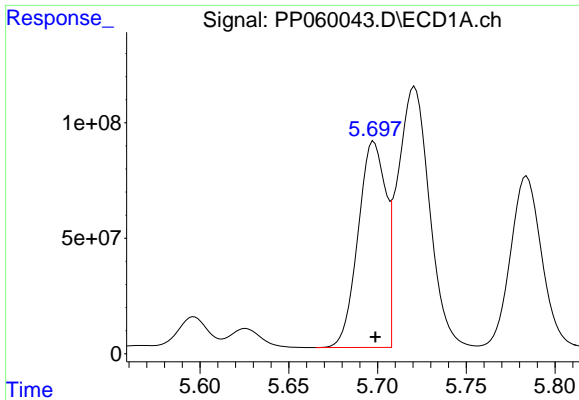
#1 Tetrachloro-m-xylene
 R.T.: 3.668 min
 Delta R.T.: -0.002 min
 Response: 22249765
 Conc: 13.66 ng/ml



#2 Decachlorobiphenyl
 R.T.: 10.429 min
 Delta R.T.: -0.003 min
 Response: 30060851
 Conc: 19.71 ng/ml



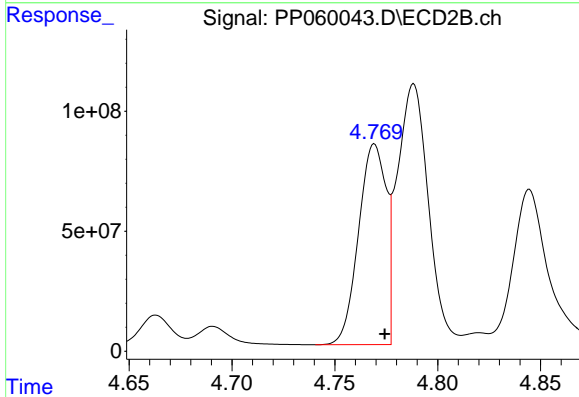
#2 Decachlorobiphenyl
 R.T.: 8.741 min
 Delta R.T.: -0.017 min
 Response: 27895380
 Conc: 18.42 ng/ml



#3 AR-1016-1

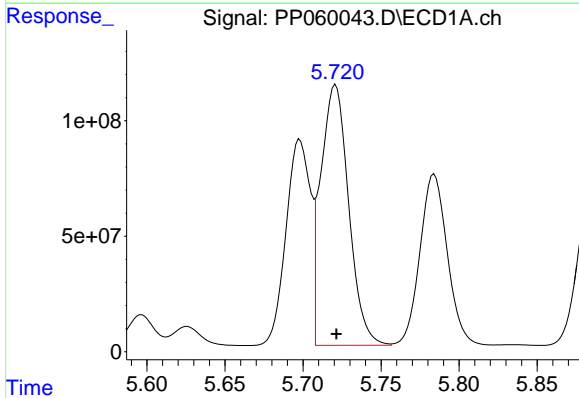
R.T.: 5.698 min
 Delta R.T.: 0.000 min
 Response: 968081122
 Conc: 14347.24 ng/ml

Instrument :
 ECD_P
 ClientSampleId :



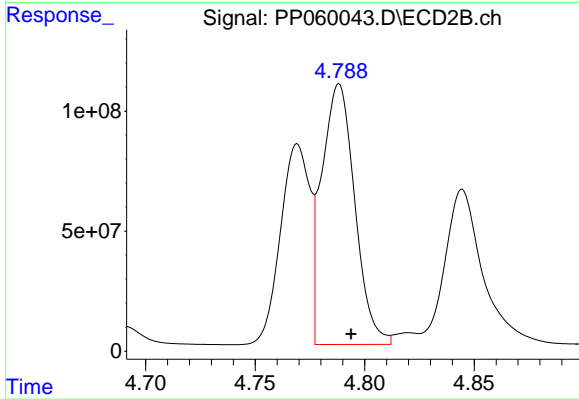
#3 AR-1016-1

R.T.: 4.769 min
 Delta R.T.: -0.005 min
 Response: 779463400
 Conc: 12966.07 ng/ml



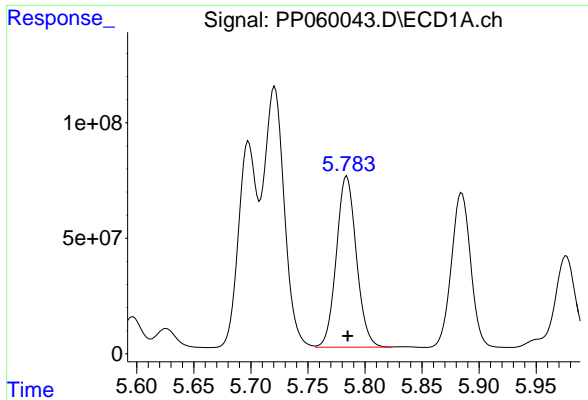
#4 AR-1016-2

R.T.: 5.721 min
 Delta R.T.: 0.000 min
 Response: 1405921165
 Conc: 14696.89 ng/ml



#4 AR-1016-2

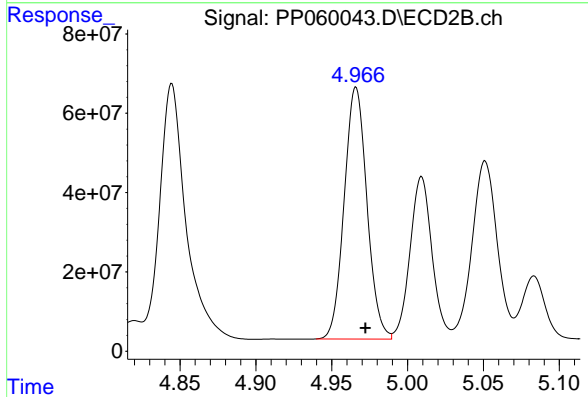
R.T.: 4.788 min
 Delta R.T.: -0.005 min
 Response: 1140725482
 Conc: 13743.38 ng/ml



#5 AR-1016-3

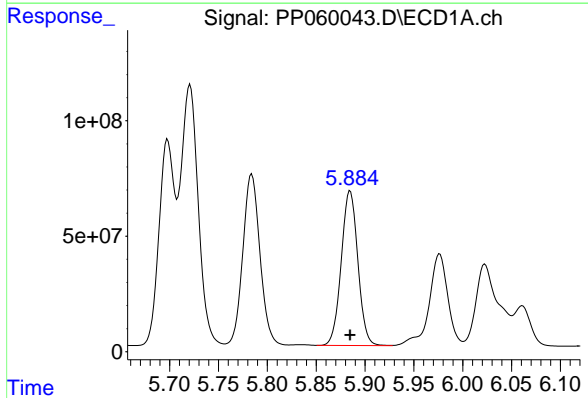
R.T.: 5.784 min
 Delta R.T.: 0.000 min
 Response: 902234526
 Conc: 15157.75 ng/ml

Instrument :
 ECD_P
 ClientSampleId :



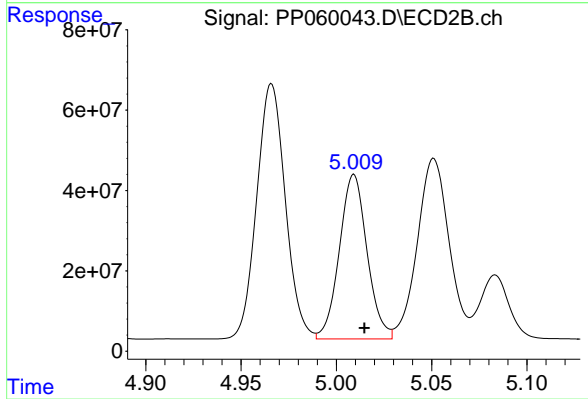
#5 AR-1016-3

R.T.: 4.966 min
 Delta R.T.: -0.006 min
 Response: 663243055
 Conc: 14785.06 ng/ml



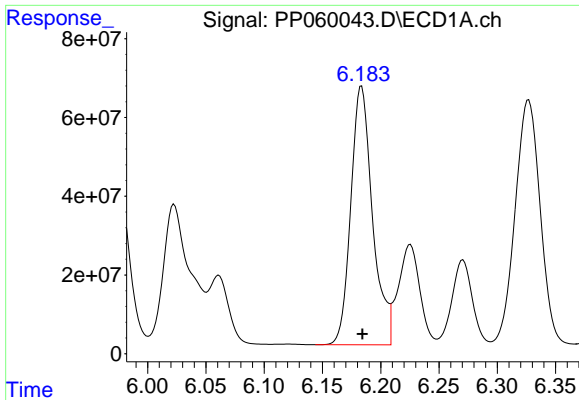
#6 AR-1016-4

R.T.: 5.885 min
 Delta R.T.: 0.000 min
 Response: 790645470
 Conc: 16146.76 ng/ml



#6 AR-1016-4

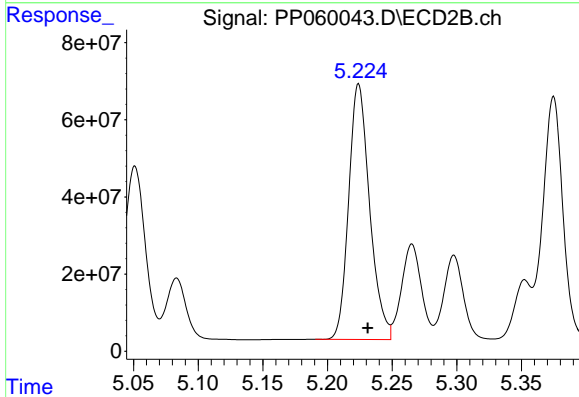
R.T.: 5.009 min
 Delta R.T.: -0.005 min
 Response: 414002027
 Conc: 11735.12 ng/ml



#7 AR-1016-5

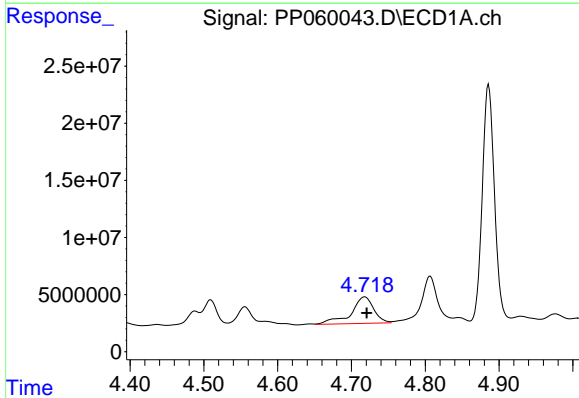
R.T.: 6.184 min
 Delta R.T.: 0.000 min
 Response: 850172763
 Conc: 17291.22 ng/ml

Instrument :
 ECD_P
 ClientSampleId :



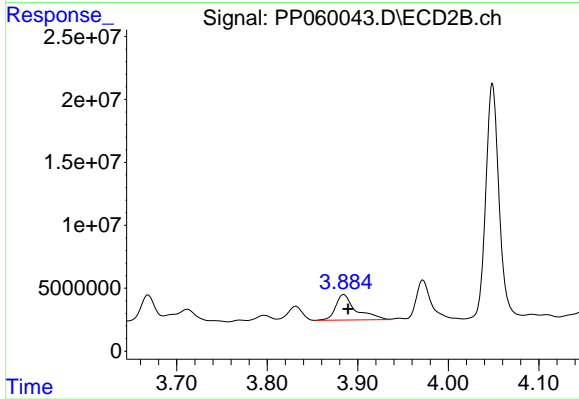
#7 AR-1016-5

R.T.: 5.224 min
 Delta R.T.: -0.007 min
 Response: 746837358
 Conc: 16062.22 ng/ml



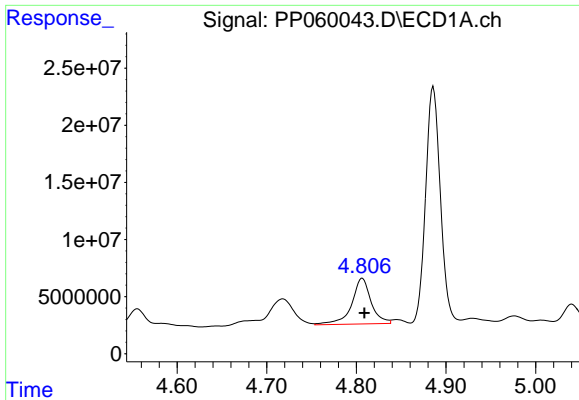
#8 AR-1221-1

R.T.: 4.718 min
 Delta R.T.: -0.003 min
 Response: 50021418
 Conc: 1881.70 ng/ml



#8 AR-1221-1

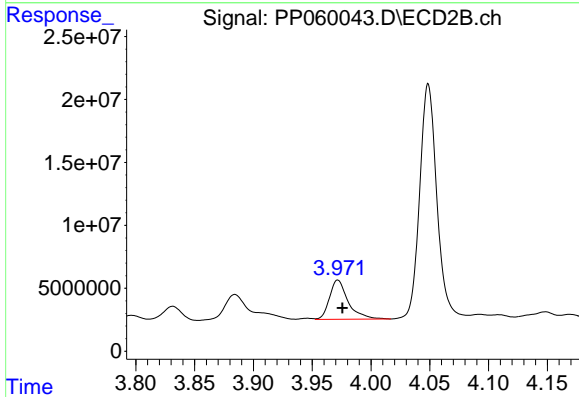
R.T.: 3.884 min
 Delta R.T.: -0.005 min
 Response: 31779055
 Conc: 1446.81 ng/ml



#9 AR-1221-2

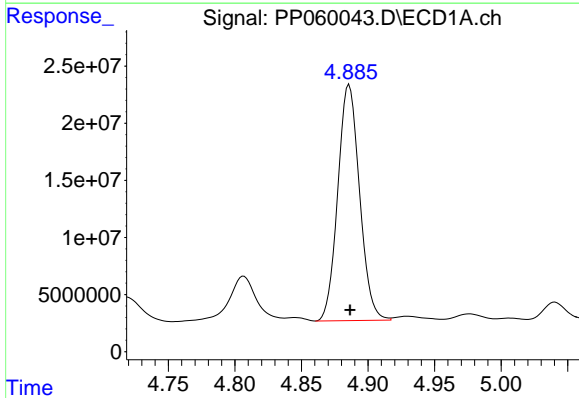
R.T.: 4.807 min
 Delta R.T.: -0.002 min
 Response: 60287461
 Conc: 3062.91 ng/ml

Instrument :
 ECD_P
 ClientSampleId :



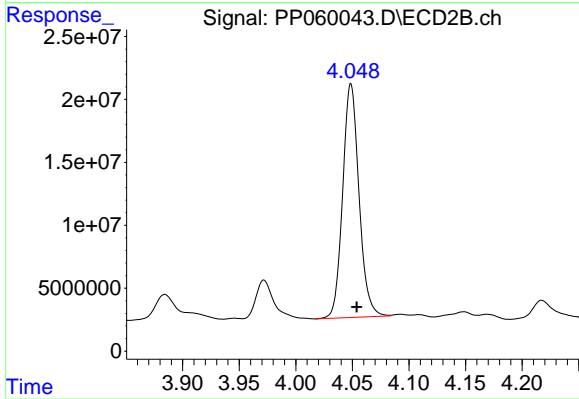
#9 AR-1221-2

R.T.: 3.972 min
 Delta R.T.: -0.004 min
 Response: 34401785
 Conc: 2228.25 ng/ml



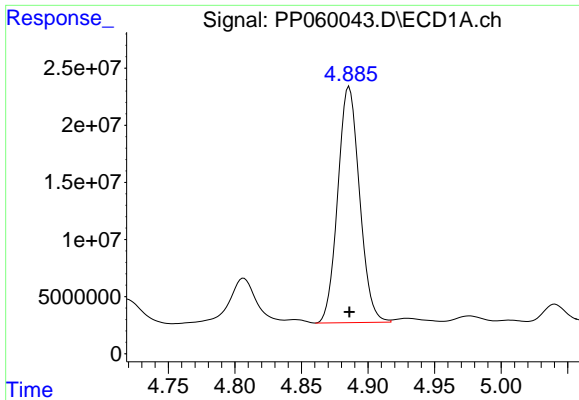
#10 AR-1221-3

R.T.: 4.886 min
 Delta R.T.: 0.000 min
 Response: 234908470
 Conc: 4112.63 ng/ml



#10 AR-1221-3

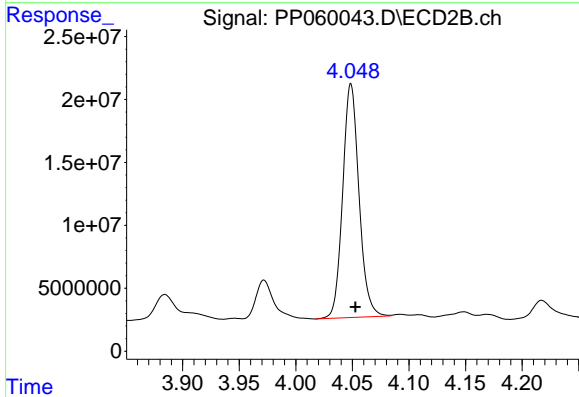
R.T.: 4.049 min
 Delta R.T.: -0.005 min
 Response: 186312517
 Conc: 3972.28 ng/ml



#11 AR-1232-1

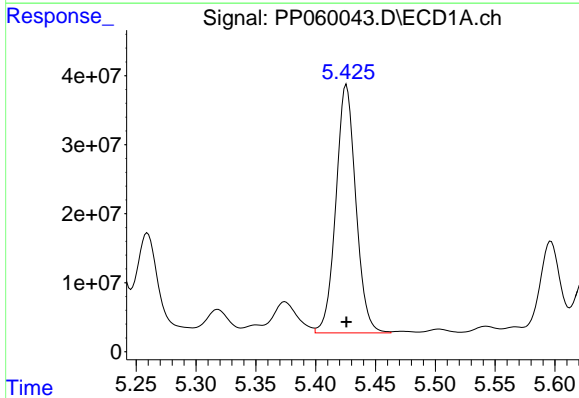
R.T.: 4.886 min
 Delta R.T.: 0.000 min
 Response: 234908470
 Conc: 5035.04 ng/ml

Instrument :
 ECD_P
 ClientSampleId :



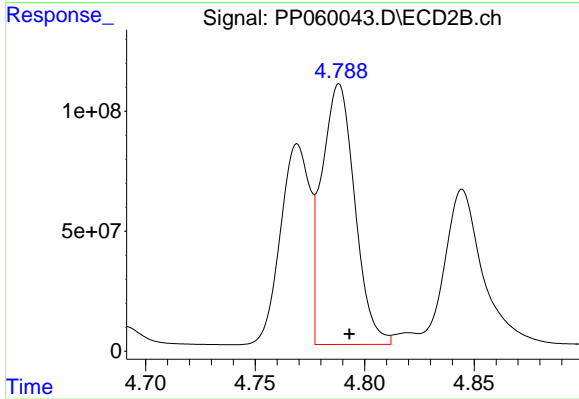
#11 AR-1232-1

R.T.: 4.049 min
 Delta R.T.: -0.004 min
 Response: 186312517
 Conc: 4901.22 ng/ml



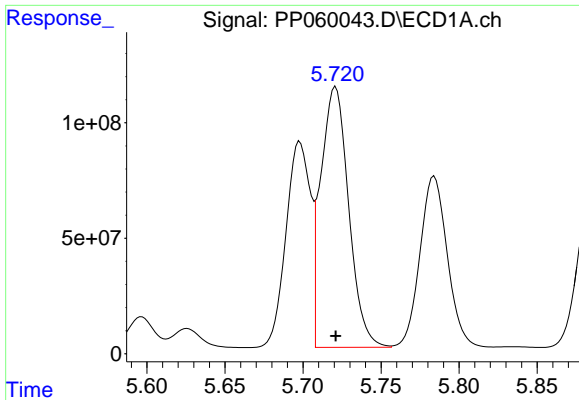
#12 AR-1232-2

R.T.: 5.426 min
 Delta R.T.: 0.000 min
 Response: 417435344
 Conc: 16435.29 ng/ml



#12 AR-1232-2

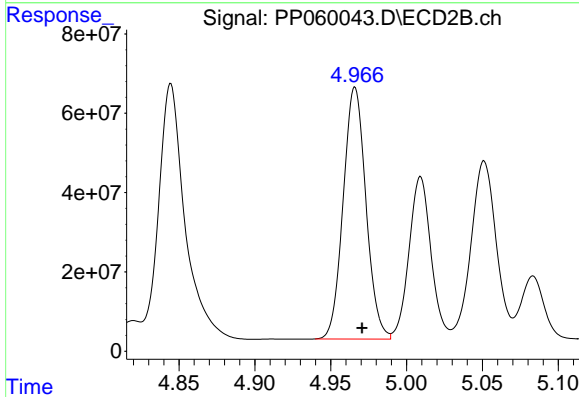
R.T.: 4.788 min
 Delta R.T.: -0.005 min
 Response: 1140725482
 Conc: 30936.51 ng/ml



#13 AR-1232-3

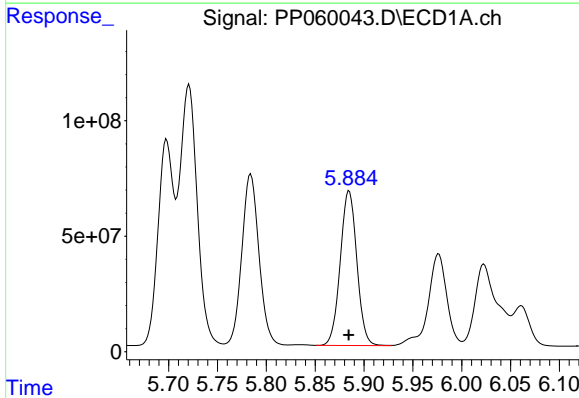
R.T.: 5.721 min
 Delta R.T.: 0.000 min
 Response: 1405921165
 Conc: 32541.96 ng/ml

Instrument :
 ECD_P
 ClientSampleId :



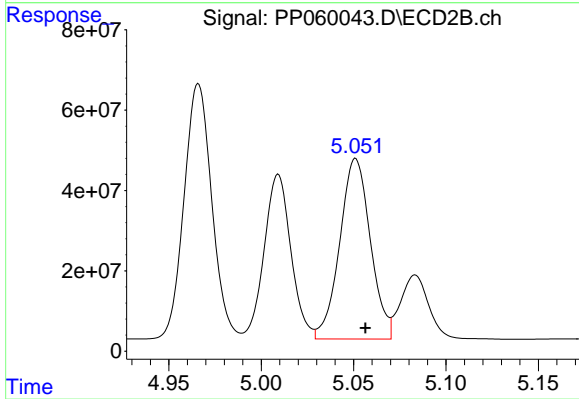
#13 AR-1232-3

R.T.: 4.966 min
 Delta R.T.: -0.005 min
 Response: 663243055
 Conc: 33123.24 ng/ml



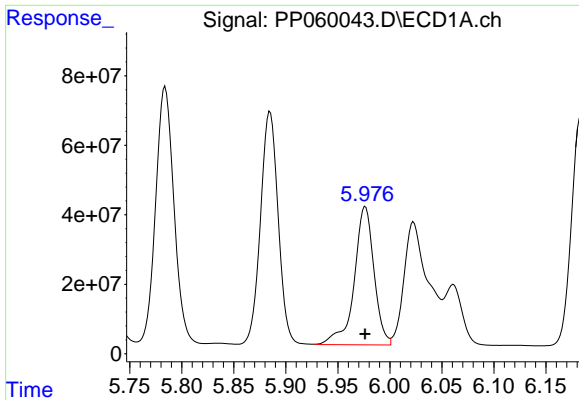
#14 AR-1232-4

R.T.: 5.885 min
 Delta R.T.: 0.000 min
 Response: 790645470
 Conc: 35771.16 ng/ml



#14 AR-1232-4

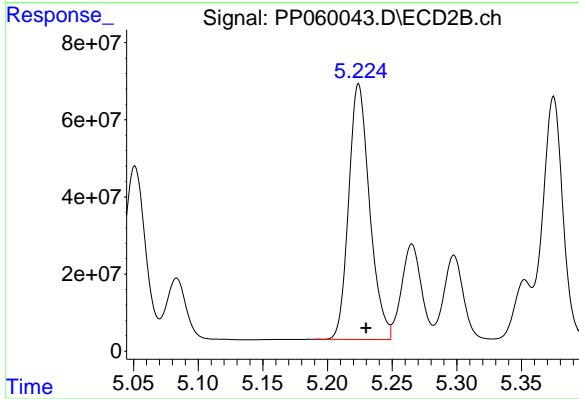
R.T.: 5.051 min
 Delta R.T.: -0.005 min
 Response: 519774979
 Conc: 28455.03 ng/ml



#15 AR-1232-5

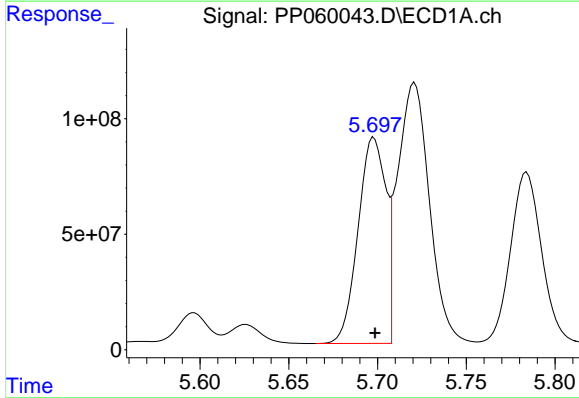
R.T.: 5.976 min
 Delta R.T.: 0.000 min
 Response: 527232092
 Conc: 28739.26 ng/ml

Instrument :
 ECD_P
 ClientSampleId :



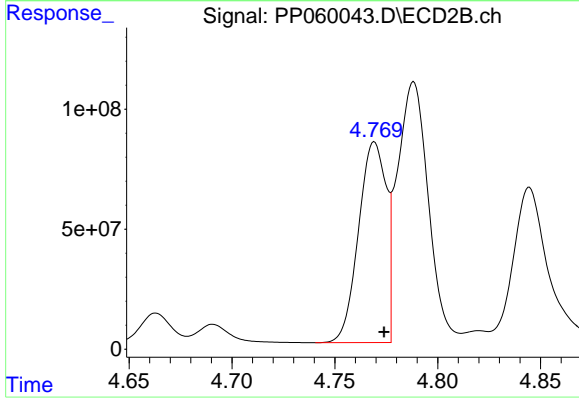
#15 AR-1232-5

R.T.: 5.224 min
 Delta R.T.: -0.006 min
 Response: 746837358
 Conc: 37250.10 ng/ml



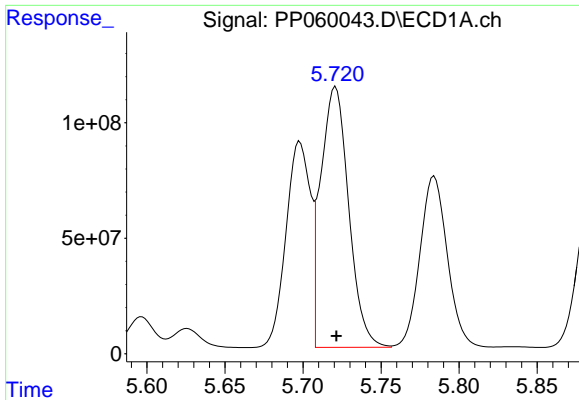
#16 AR-1242-1

R.T.: 5.698 min
 Delta R.T.: 0.000 min
 Response: 968081122
 Conc: 16208.79 ng/ml



#16 AR-1242-1

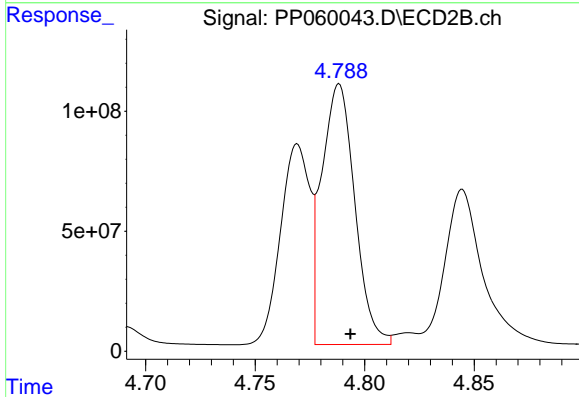
R.T.: 4.769 min
 Delta R.T.: -0.005 min
 Response: 779463400
 Conc: 14801.52 ng/ml



#17 AR-1242-2

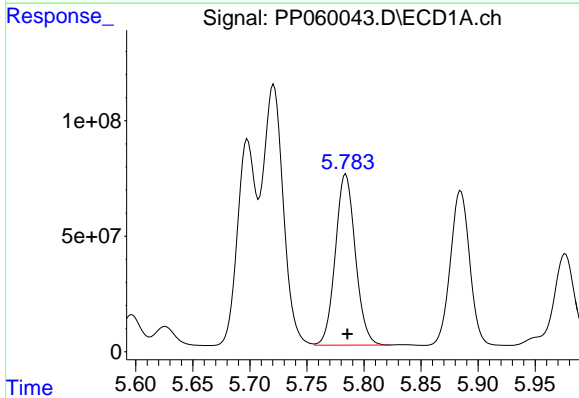
R.T.: 5.721 min
 Delta R.T.: 0.000 min
 Response: 1405921165
 Conc: 16729.76 ng/ml

Instrument :
 ECD_P
 ClientSampleId :



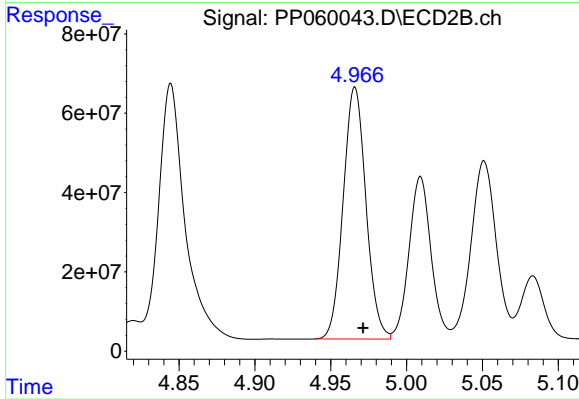
#17 AR-1242-2

R.T.: 4.788 min
 Delta R.T.: -0.005 min
 Response: 1140725482
 Conc: 15830.99 ng/ml



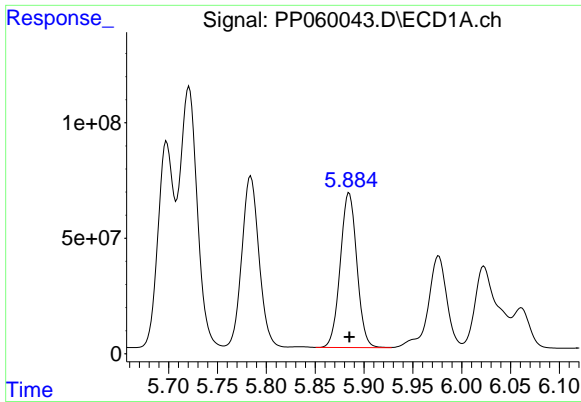
#18 AR-1242-3

R.T.: 5.784 min
 Delta R.T.: -0.001 min
 Response: 902234526
 Conc: 17250.65 ng/ml



#18 AR-1242-3

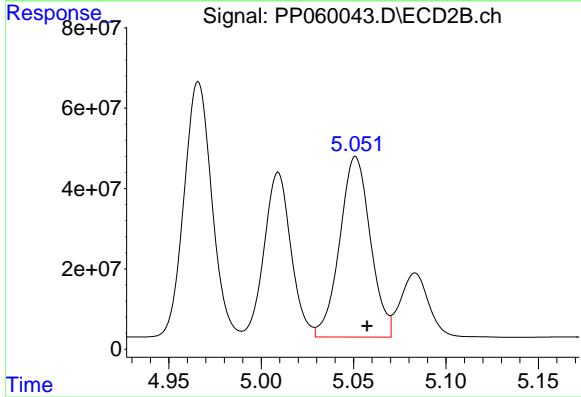
R.T.: 4.966 min
 Delta R.T.: -0.005 min
 Response: 663243055
 Conc: 16948.16 ng/ml



#19 AR-1242-4

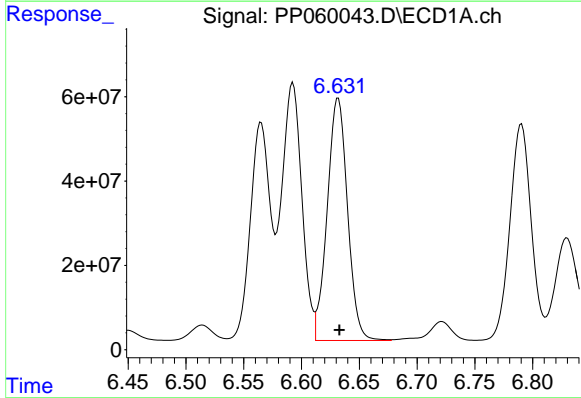
R.T.: 5.885 min
 Delta R.T.: 0.000 min
 Response: 790645470
 Conc: 18347.83 ng/ml

Instrument :
 ECD_P
 ClientSampleId :



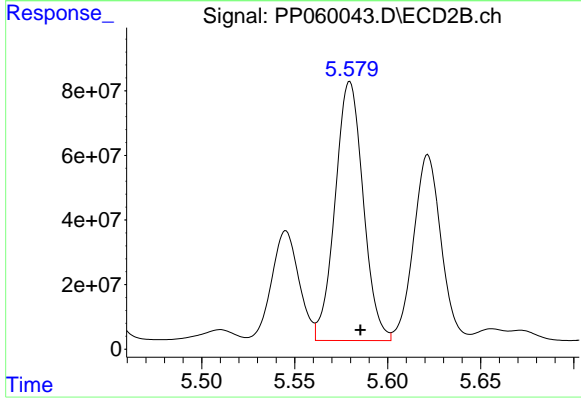
#19 AR-1242-4

R.T.: 5.051 min
 Delta R.T.: -0.006 min
 Response: 519774979
 Conc: 13263.13 ng/ml



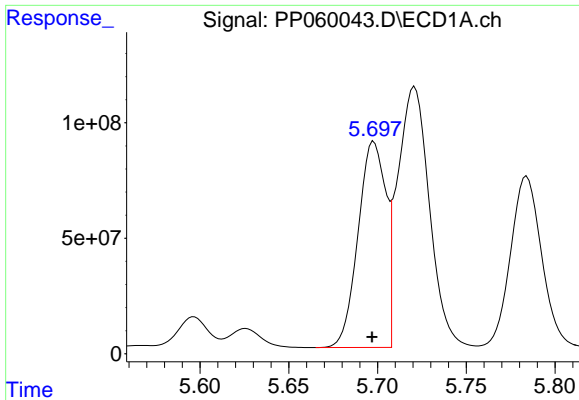
#20 AR-1242-5

R.T.: 6.632 min
 Delta R.T.: 0.000 min
 Response: 704515321
 Conc: 15409.52 ng/ml



#20 AR-1242-5

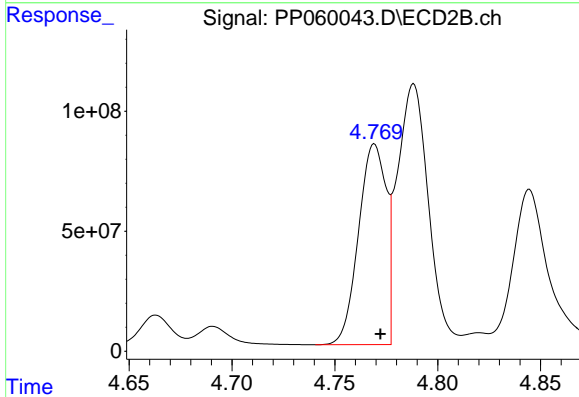
R.T.: 5.580 min
 Delta R.T.: -0.006 min
 Response: 842722205
 Conc: 17418.81 ng/ml



#21 AR-1248-1

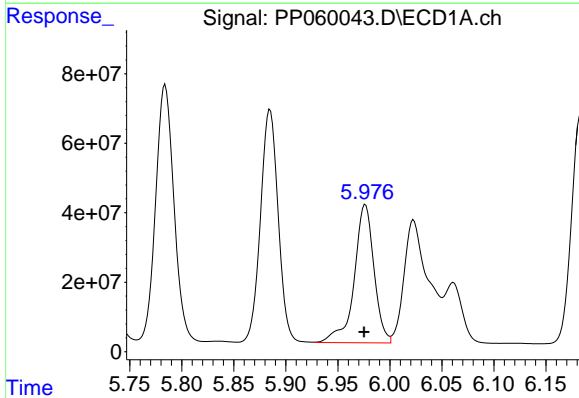
R.T.: 5.698 min
 Delta R.T.: 0.001 min
 Response: 968081122
 Conc: 21658.91 ng/ml

Instrument :
 ECD_P
 ClientSampleId :



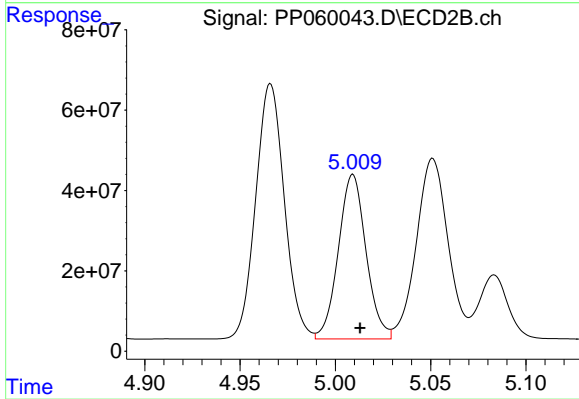
#21 AR-1248-1

R.T.: 4.769 min
 Delta R.T.: -0.003 min
 Response: 779463400
 Conc: 19949.06 ng/ml



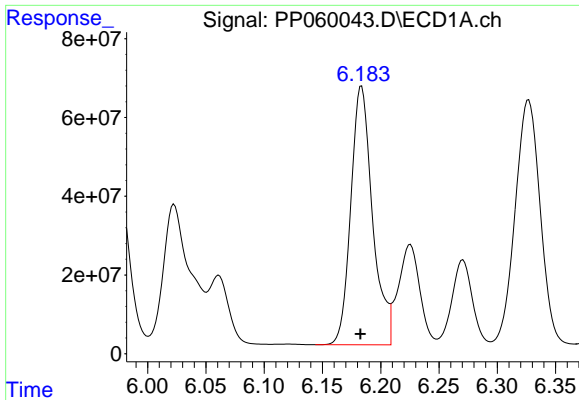
#22 AR-1248-2

R.T.: 5.976 min
 Delta R.T.: 0.001 min
 Response: 527232092
 Conc: 8140.84 ng/ml



#22 AR-1248-2

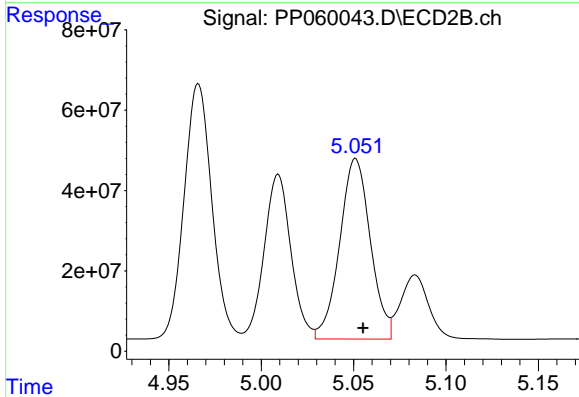
R.T.: 5.009 min
 Delta R.T.: -0.004 min
 Response: 414002027
 Conc: 7640.73 ng/ml



#23 AR-1248-3

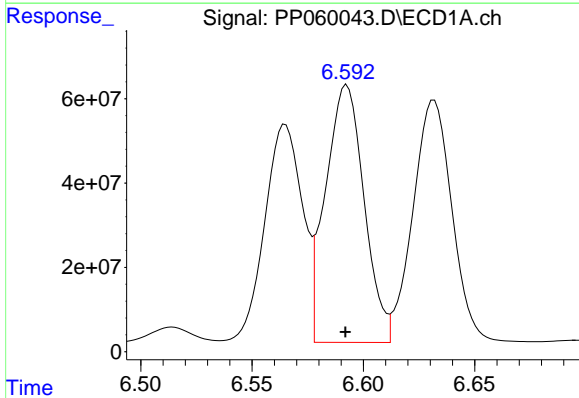
R.T.: 6.184 min
 Delta R.T.: 0.000 min
 Response: 850172763
 Conc: 12004.27 ng/ml

Instrument :
 ECD_P
 ClientSampleId :



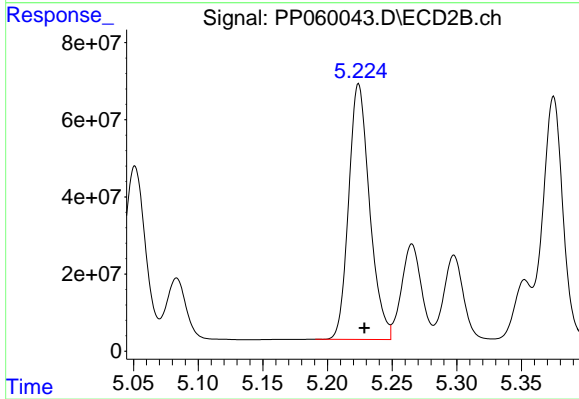
#23 AR-1248-3

R.T.: 5.051 min
 Delta R.T.: -0.004 min
 Response: 519774979
 Conc: 9134.94 ng/ml



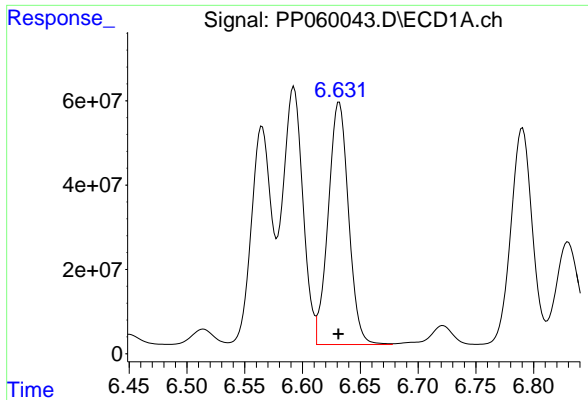
#24 AR-1248-4

R.T.: 6.593 min
 Delta R.T.: 0.000 min
 Response: 735831901
 Conc: 9513.74 ng/ml



#24 AR-1248-4

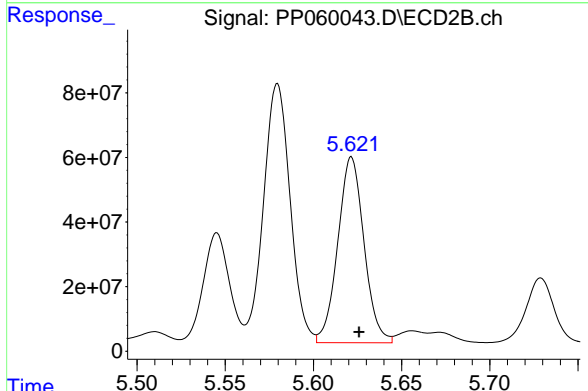
R.T.: 5.224 min
 Delta R.T.: -0.004 min
 Response: 746837358
 Conc: 11119.72 ng/ml



#25 AR-1248-5

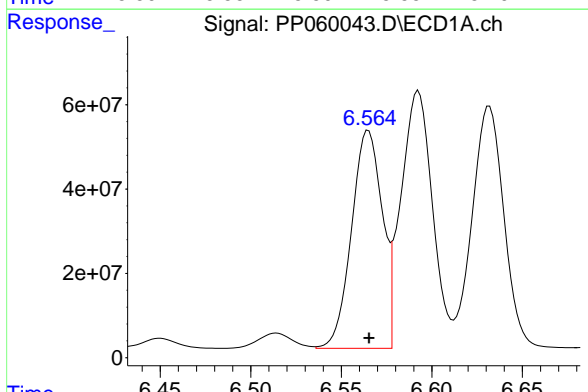
R.T.: 6.632 min
 Delta R.T.: 0.000 min
 Response: 704515321
 Conc: 9363.54 ng/m

Instrument :
 ECD_P
 ClientSampleId :



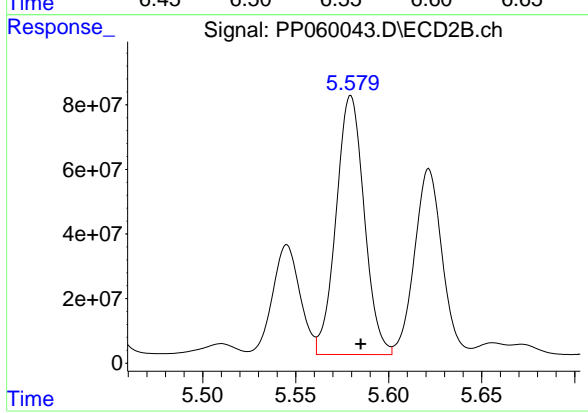
#25 AR-1248-5

R.T.: 5.622 min
 Delta R.T.: -0.004 min
 Response: 594938803
 Conc: 9019.17 ng/ml



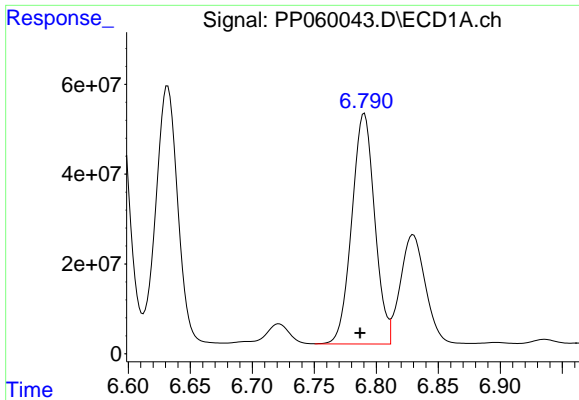
#26 AR-1254-1

R.T.: 6.565 min
 Delta R.T.: 0.000 min
 Response: 610009927
 Conc: 7640.75 ng/ml



#26 AR-1254-1

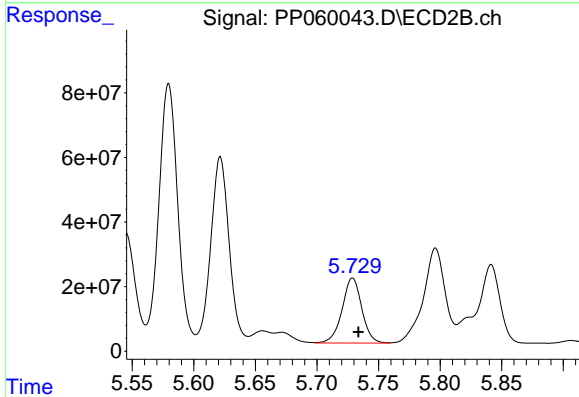
R.T.: 5.580 min
 Delta R.T.: -0.005 min
 Response: 842722205
 Conc: 8397.26 ng/ml



#27 AR-1254-2

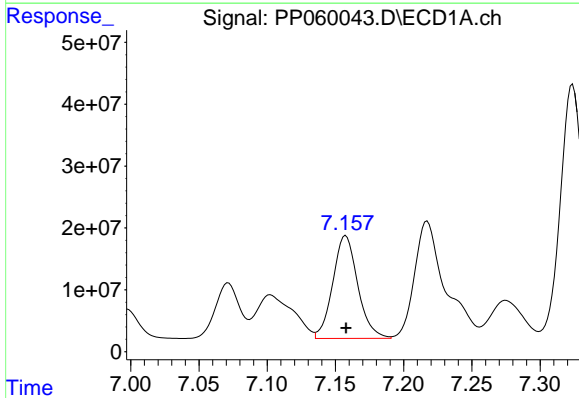
R.T.: 6.790 min
 Delta R.T.: 0.004 min
 Response: 660123702
 Conc: 5511.49 ng/ml

Instrument :
 ECD_P
 ClientSampleId :



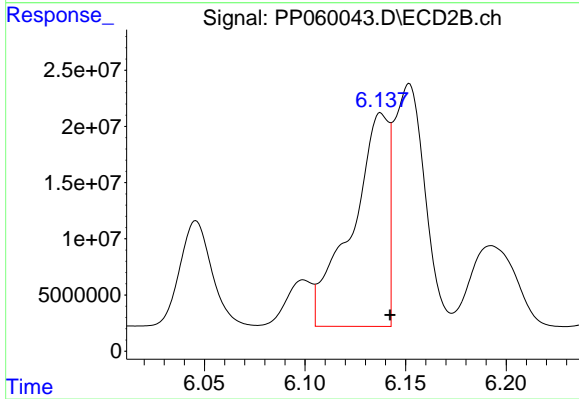
#27 AR-1254-2

R.T.: 5.729 min
 Delta R.T.: -0.005 min
 Response: 224113825
 Conc: 2579.68 ng/ml



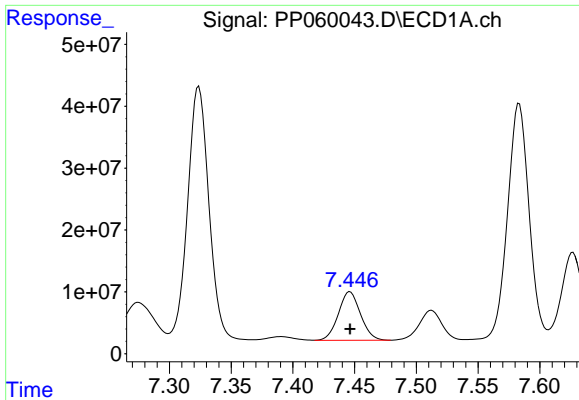
#28 AR-1254-3

R.T.: 7.158 min
 Delta R.T.: 0.000 min
 Response: 212009465
 Conc: 1745.21 ng/ml



#28 AR-1254-3

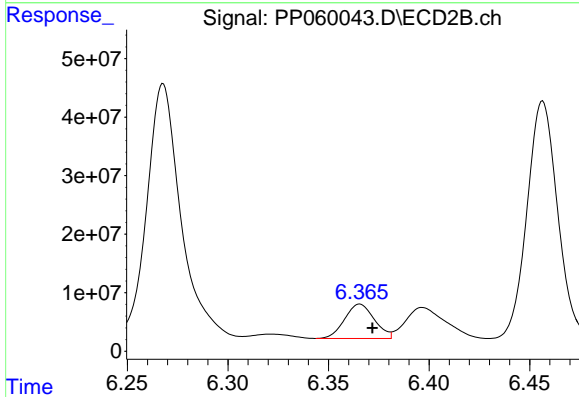
R.T.: 6.138 min
 Delta R.T.: -0.004 min
 Response: 240923507
 Conc: 1715.97 ng/ml



#29 AR-1254-4

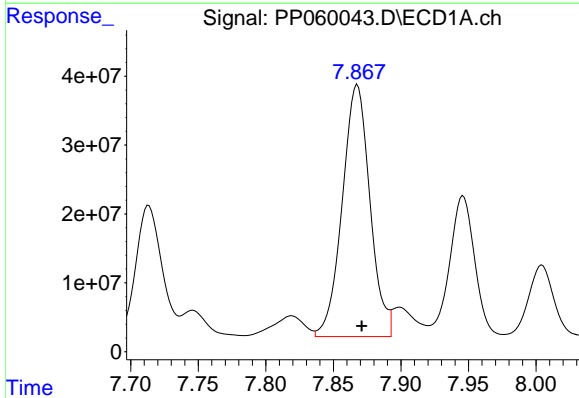
R.T.: 7.446 min
 Delta R.T.: 0.000 min
 Response: 97897813
 Conc: 1100.83 ng/ml

Instrument :
 ECD_P
 ClientSampleId :



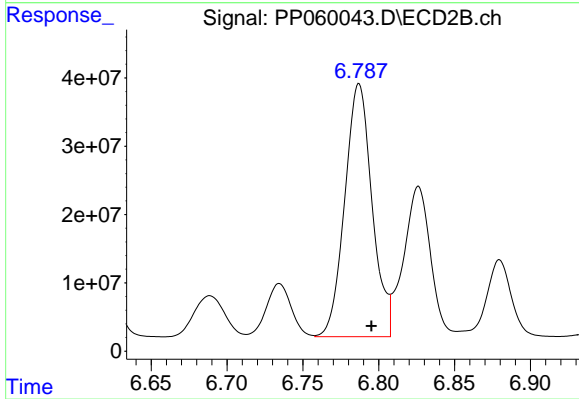
#29 AR-1254-4

R.T.: 6.366 min
 Delta R.T.: -0.006 min
 Response: 60427618
 Conc: 717.88 ng/ml



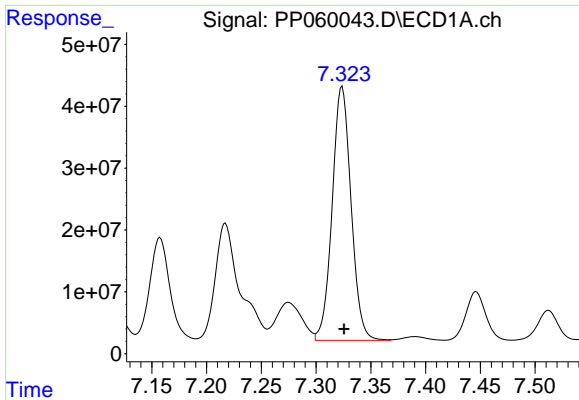
#30 AR-1254-5

R.T.: 7.868 min
 Delta R.T.: -0.003 min
 Response: 521144651
 Conc: 5357.43 ng/ml



#30 AR-1254-5

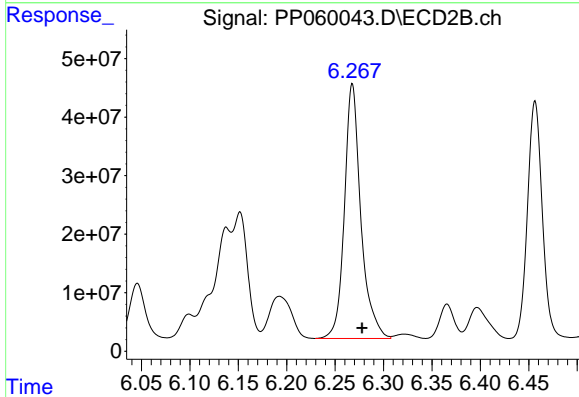
R.T.: 6.787 min
 Delta R.T.: -0.008 min
 Response: 463757603
 Conc: 3909.69 ng/ml



#31 AR-1260-1

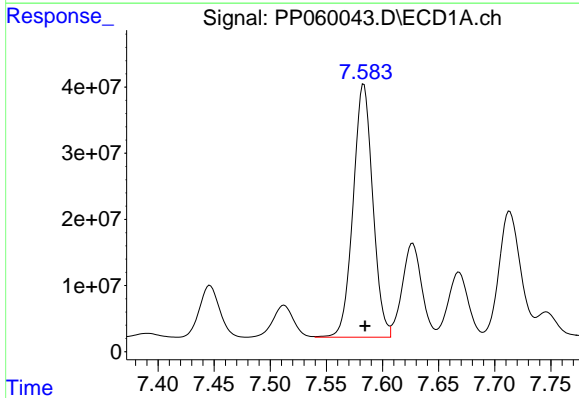
R.T.: 7.324 min
 Delta R.T.: -0.002 min
 Response: 492807755
 Conc: 5467.22 ng/ml

Instrument :
 ECD_P
 ClientSampleId :



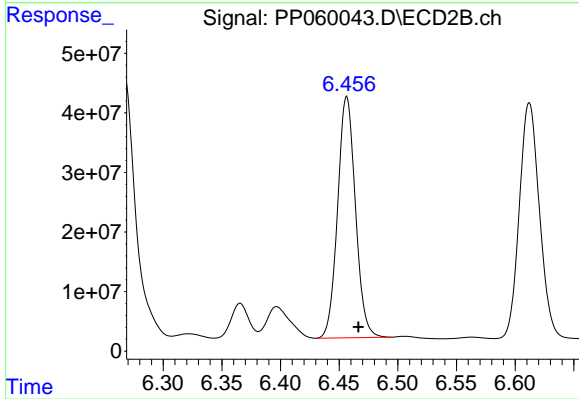
#31 AR-1260-1

R.T.: 6.268 min
 Delta R.T.: -0.010 min
 Response: 515418089
 Conc: 5535.21 ng/ml



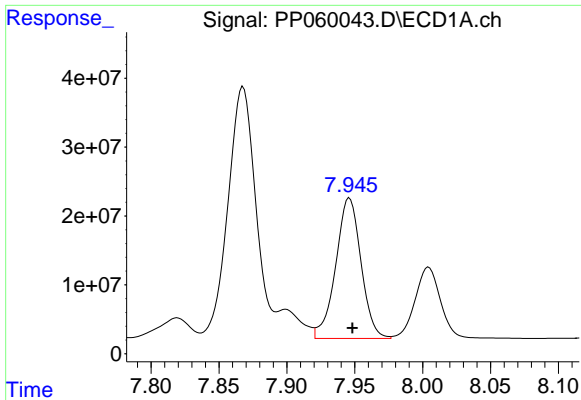
#32 AR-1260-2

R.T.: 7.583 min
 Delta R.T.: -0.001 min
 Response: 466598624
 Conc: 4548.29 ng/ml



#32 AR-1260-2

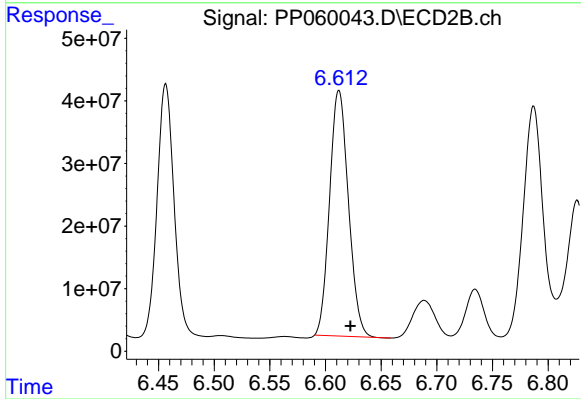
R.T.: 6.457 min
 Delta R.T.: -0.010 min
 Response: 428281948
 Conc: 3906.36 ng/ml



#33 AR-1260-3

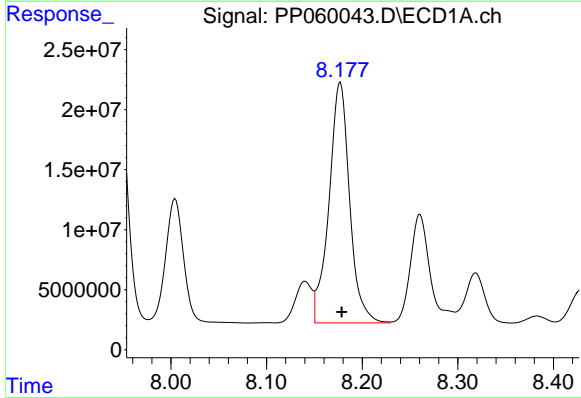
R.T.: 7.946 min
 Delta R.T.: -0.002 min
 Response: 265165106
 Conc: 3366.81 ng/m

Instrument :
 ECD_P
 ClientSampleId :



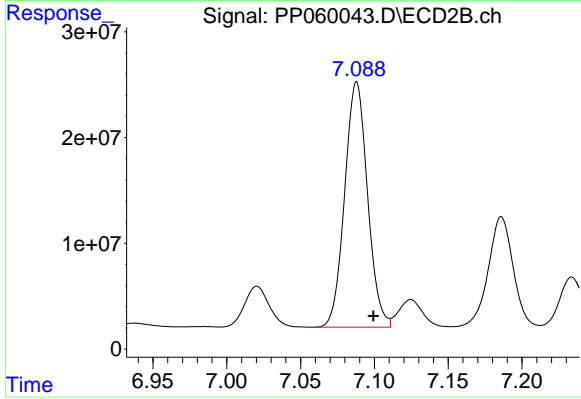
#33 AR-1260-3

R.T.: 6.612 min
 Delta R.T.: -0.010 min
 Response: 462691396
 Conc: 4498.51 ng/ml



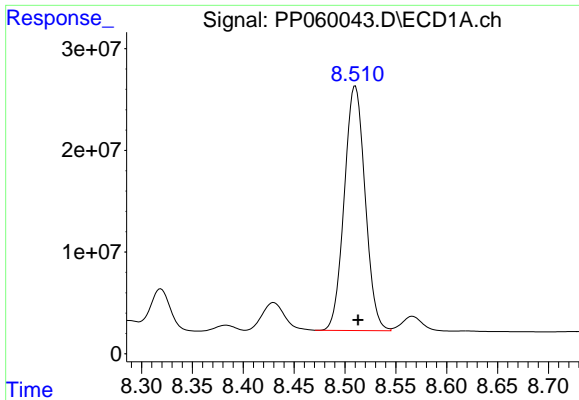
#34 AR-1260-4

R.T.: 8.177 min
 Delta R.T.: -0.001 min
 Response: 300932182
 Conc: 3357.86 ng/ml



#34 AR-1260-4

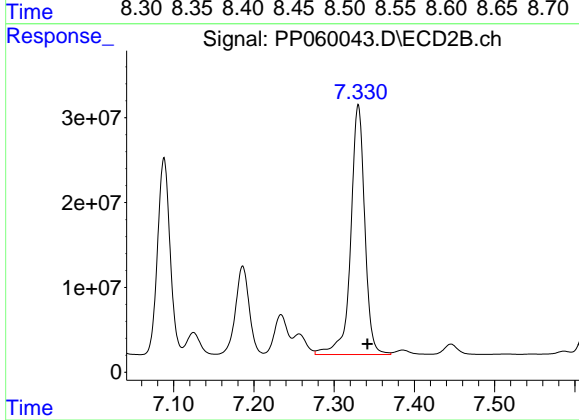
R.T.: 7.088 min
 Delta R.T.: -0.011 min
 Response: 250039510
 Conc: 3002.26 ng/ml



#35 AR-1260-5

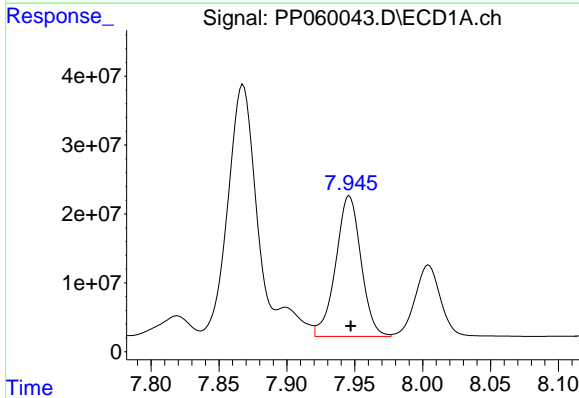
R.T.: 8.510 min
 Delta R.T.: -0.003 min
 Response: 342142859
 Conc: 2004.82 ng/ml

Instrument :
 ECD_P
 ClientSampleId :



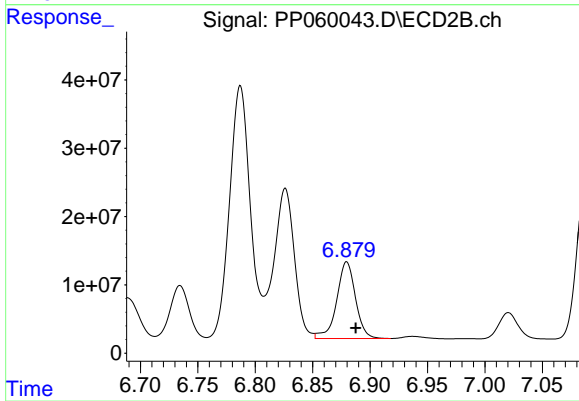
#35 AR-1260-5

R.T.: 7.330 min
 Delta R.T.: -0.011 min
 Response: 358582275
 Conc: 1863.70 ng/ml



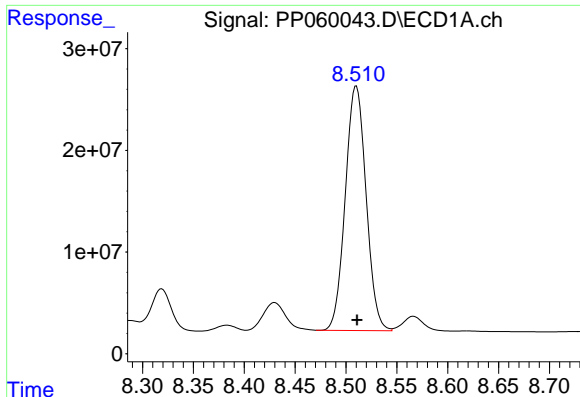
#36 AR-1262-1

R.T.: 7.946 min
 Delta R.T.: 0.000 min
 Response: 265165106
 Conc: 2291.17 ng/ml



#36 AR-1262-1

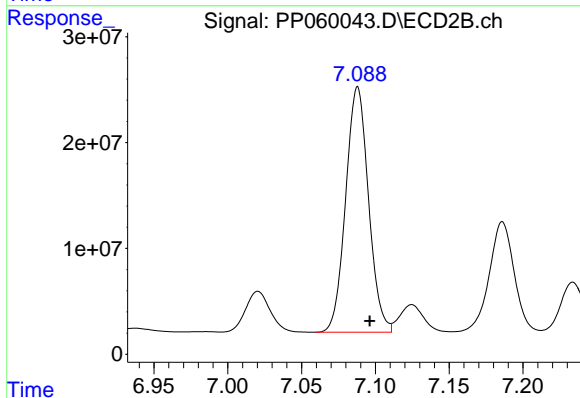
R.T.: 6.880 min
 Delta R.T.: -0.008 min
 Response: 128462045
 Conc: 2545.12 ng/ml



#37 AR-1262-2

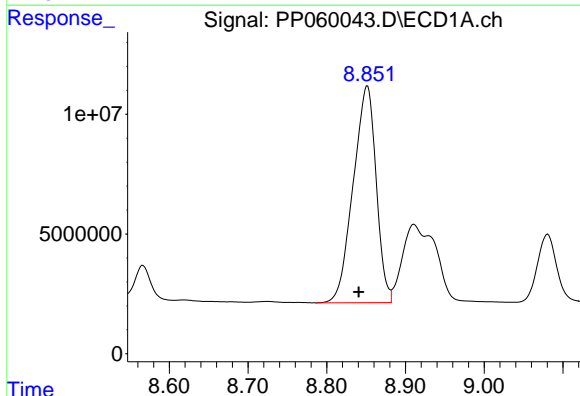
R.T.: 8.510 min
 Delta R.T.: 0.000 min
 Response: 342142859
 Conc: 1709.09 ng/m

Instrument :
 ECD_P
 ClientSampleId :



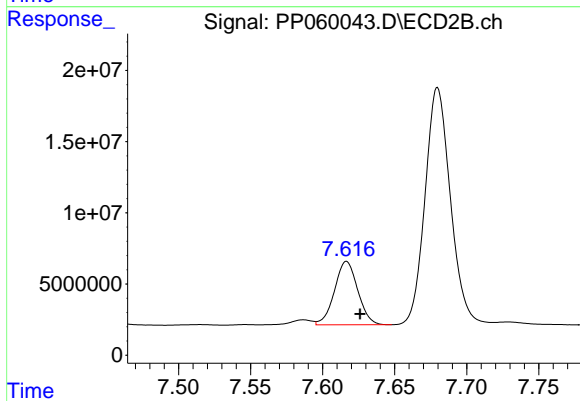
#37 AR-1262-2

R.T.: 7.088 min
 Delta R.T.: -0.008 min
 Response: 250039510
 Conc: 2213.24 ng/ml



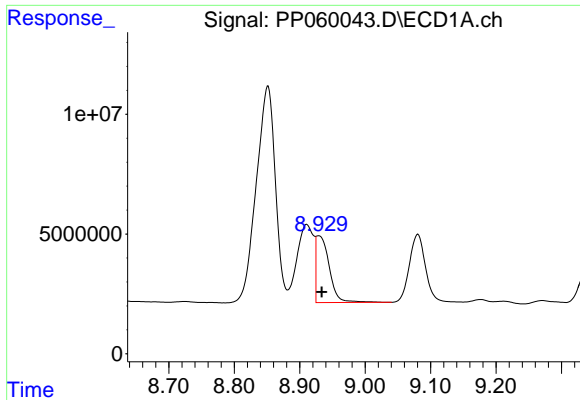
#38 AR-1262-3

R.T.: 8.852 min
 Delta R.T.: 0.011 min
 Response: 183335207
 Conc: 1273.15 ng/ml



#38 AR-1262-3

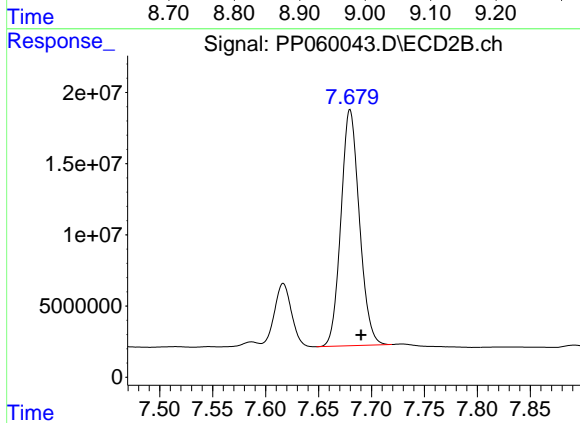
R.T.: 7.617 min
 Delta R.T.: -0.009 min
 Response: 50144618
 Conc: 572.07 ng/ml



#39 AR-1262-4

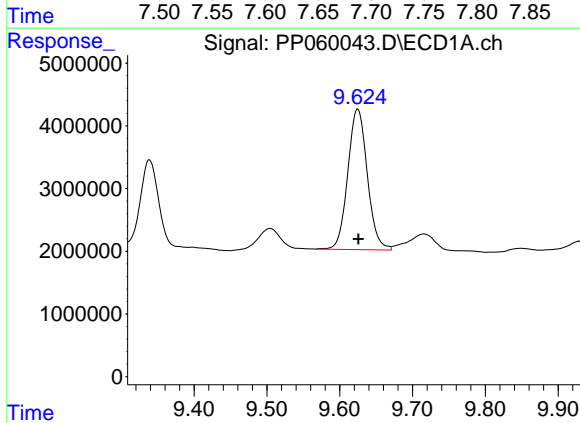
R.T.: 8.929 min
 Delta R.T.: -0.004 min
 Response: 39176048
 Conc: 344.99 ng/ml

Instrument :
 ECD_P
 ClientSampleId :



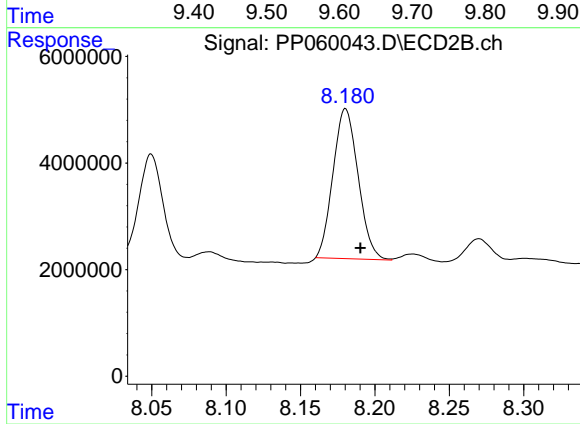
#39 AR-1262-4

R.T.: 7.680 min
 Delta R.T.: -0.010 min
 Response: 201252515
 Conc: 1232.36 ng/ml



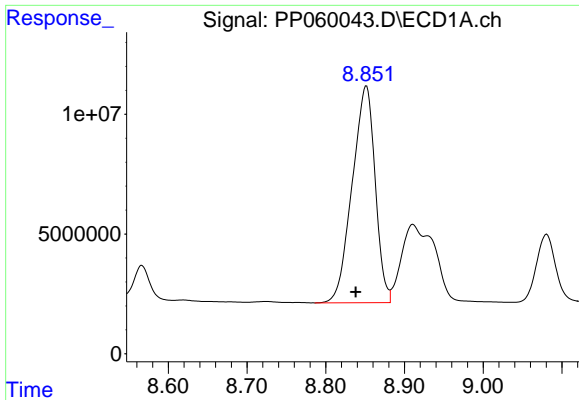
#40 AR-1262-5

R.T.: 9.625 min
 Delta R.T.: 0.000 min
 Response: 41770259
 Conc: 559.90 ng/ml



#40 AR-1262-5

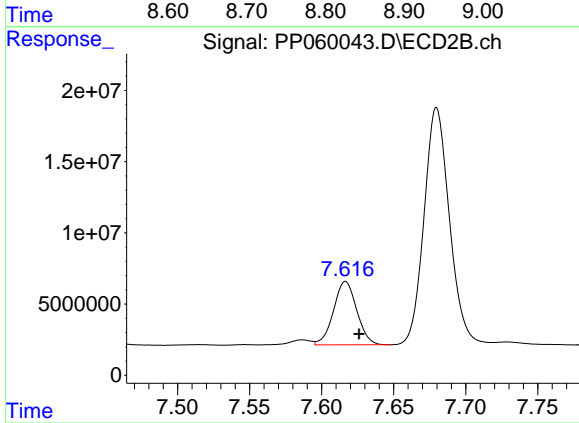
R.T.: 8.180 min
 Delta R.T.: -0.010 min
 Response: 33099203
 Conc: 443.43 ng/ml



#41 AR-1268-1

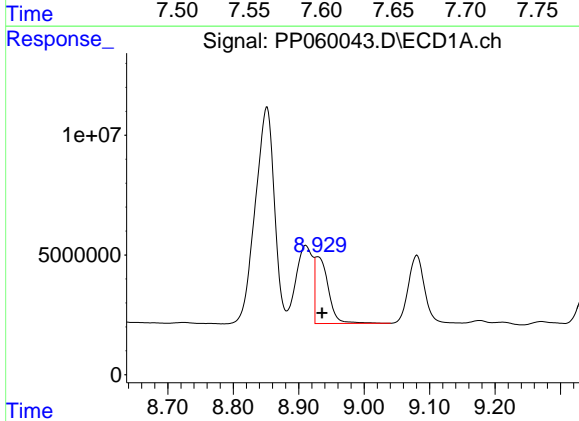
R.T.: 8.852 min
 Delta R.T.: 0.014 min
 Response: 183335207
 Conc: 731.12 ng/ml

Instrument :
 ECD_P
 ClientSampleId :



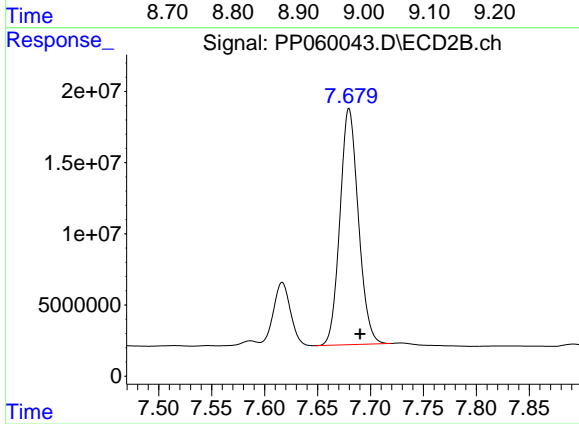
#41 AR-1268-1

R.T.: 7.617 min
 Delta R.T.: -0.009 min
 Response: 50144618
 Conc: 192.60 ng/ml



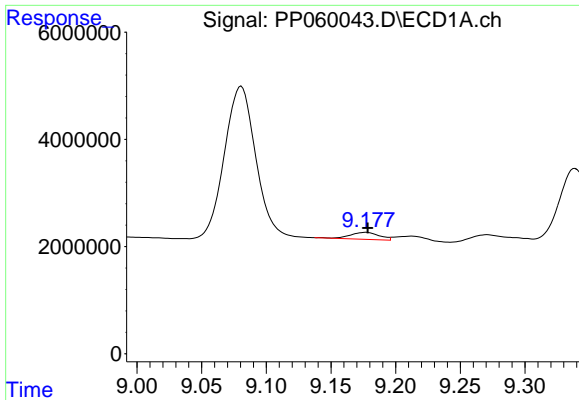
#42 AR-1268-2

R.T.: 8.929 min
 Delta R.T.: -0.007 min
 Response: 39176048
 Conc: 170.70 ng/ml



#42 AR-1268-2

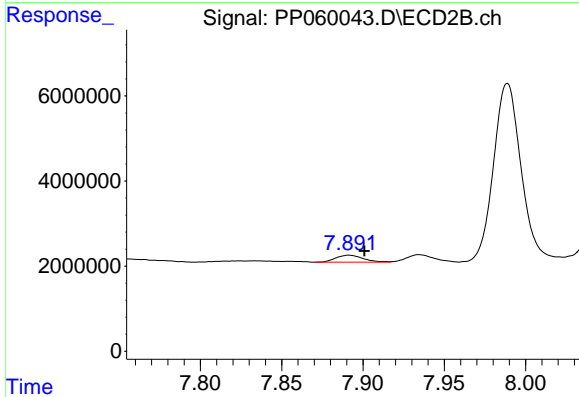
R.T.: 7.680 min
 Delta R.T.: -0.010 min
 Response: 201252515
 Conc: 870.51 ng/ml



#43 AR-1268-3

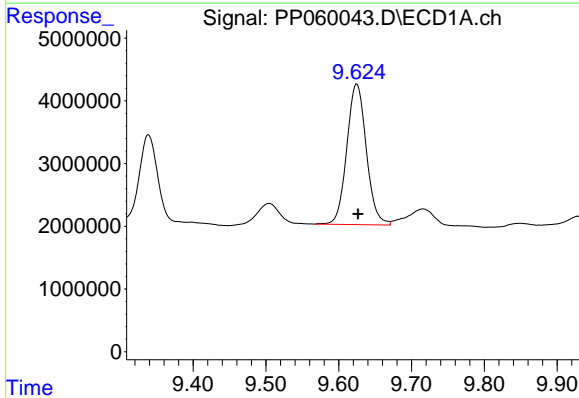
R.T.: 9.177 min
 Delta R.T.: -0.001 min
 Response: 2021939
 Conc: 10.25 ng/ml

Instrument :
 ECD_P
 ClientSampleId :



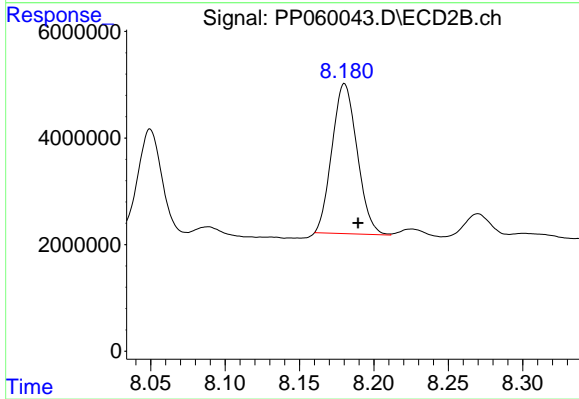
#43 AR-1268-3

R.T.: 7.891 min
 Delta R.T.: -0.009 min
 Response: 1876986
 Conc: 9.19 ng/ml



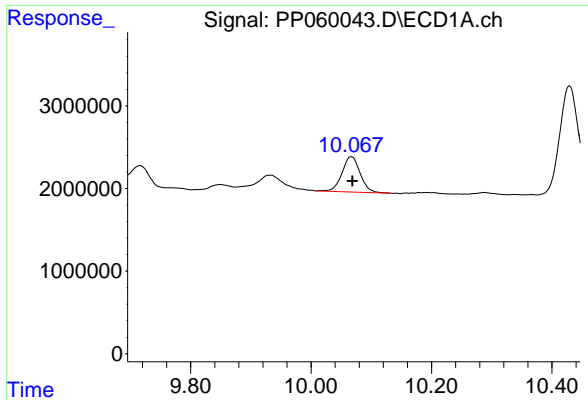
#44 AR-1268-4

R.T.: 9.625 min
 Delta R.T.: -0.002 min
 Response: 41770259
 Conc: 504.31 ng/ml



#44 AR-1268-4

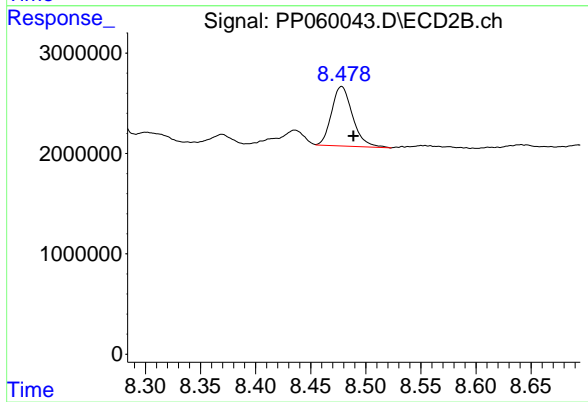
R.T.: 8.180 min
 Delta R.T.: -0.009 min
 Response: 33099203
 Conc: 409.93 ng/ml



#45 AR-1268-5

R.T.: 10.067 min
Delta R.T.: -0.002 min
Response: 8972068
Conc: 14.82 ng/ml

Instrument :
ECD_P
ClientSampleId :



#45 AR-1268-5

R.T.: 8.478 min
Delta R.T.: -0.011 min
Response: 7891693
Conc: 12.49 ng/ml