

Data Path : Z:\pestpcbsrv\HPCHEM1\ECD_P\Data\PP092023\
 Data File : PP060035.D
 Signal(s) : Signal #1: ECD1A.ch Signal #2: ECD2B.ch
 Acq On : 20 Sep 2023 18:38
 Operator : YP\AJ
 Sample : AR1660CCC500
 Misc :
 ALS Vial : 3 Sample Multiplier: 1

Instrument :
 ECD_P
ClientSampleId :
 AR1660CCC500

Manual Integrations
APPROVED

Reviewed By :Yogesh Patel 09/21/2023
 Supervised By :Ankita Jodhani 09/21/2023

Integration File signal 1: autoint1.e
 Integration File signal 2: autoint2.e
 Quant Time: Sep 21 02:16:07 2023
 Quant Method : Z:\pestpcbsrv\HPCHEM1\ECD_P\methods\PP091823.M
 Quant Title : GC EXTRACTABLES
 QLast Update : Tue Sep 19 09:22:53 2023
 Response via : Initial Calibration
 Integrator: ChemStation

Volume Inj. : 2 µl
 Signal #1 Phase : ZB-MR2 Signal #2 Phase: ZB-MR2
 Signal #1 Info : 30Mx0.32mmx 0.50µ Signal #2 Info : 30M x 0.32mm x 0.25µm

Compound	RT#1	RT#2	Resp#1	Resp#2	ng/ml	ng/ml

System Monitoring Compounds						
1) SA Tetrachlo...	4.511	3.668	97595722	74205509	46.915	45.556
2) SA Decachlor...	10.431	8.742	77772206	78483724	50.987	51.833
Target Compounds						
3) L1 AR-1016-1	5.698	4.769	32861745	28424585	487.021	472.832
4) L1 AR-1016-2	5.722	4.788	46258206	39265197	483.563	473.064
5) L1 AR-1016-3	5.785	4.966	29143016	21537591	489.609	480.117
6) L1 AR-1016-4	5.884	5.008	24117945	16475630	492.543	467.011
7) L1 AR-1016-5	6.183	5.224	24614316	23009001	500.618	494.854
31) L7 AR-1260-1	7.324	6.268	45380781	45967047	503.456	493.652
32) L7 AR-1260-2	7.583	6.457	51141668	52969576	498.516	483.135
33) L7 AR-1260-3	7.946	6.613	39801941	50400011	505.367	490.013m
34) L7 AR-1260-4	8.177	7.088	45171168	40969384	504.028	491.924
35) L7 AR-1260-5	8.510	7.331	81290400	91033907	476.329	473.141

(f)=RT Delta > 1/2 Window (#)=Amounts differ by > 25% (m)=manual int.

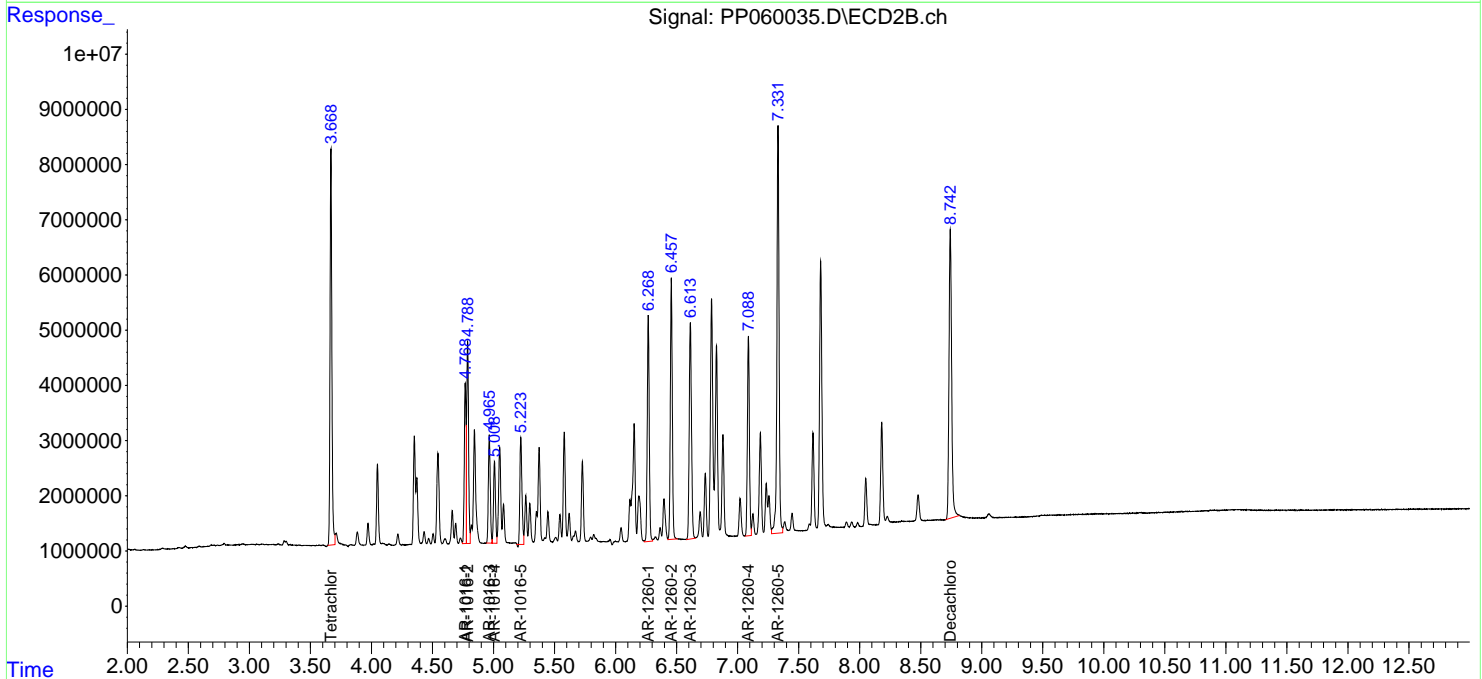
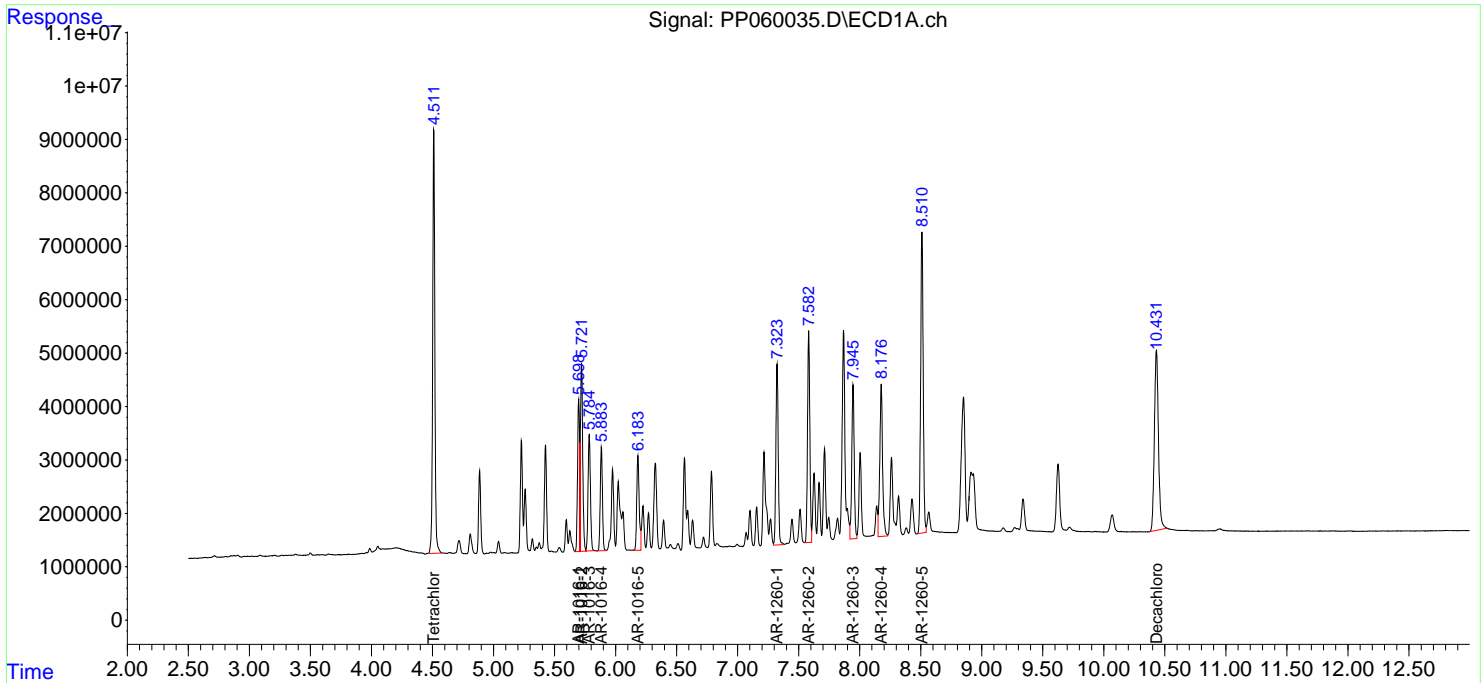
Data Path : Z:\pestpcbsrv\HPCHEM1\ECD_P\Data\PP092023\
 Data File : PP060035.D
 Signal(s) : Signal #1: ECD1A.ch Signal #2: ECD2B.ch
 Acq On : 20 Sep 2023 18:38
 Operator : YP\AJ
 Sample : AR1660CCC500
 Misc :
 ALS Vial : 3 Sample Multiplier: 1

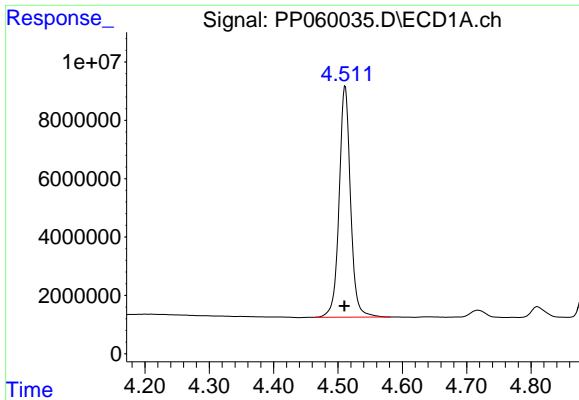
Instrument :
 ECD_P
ClientSampleId :
 AR1660CCC500

Manual Integrations
APPROVED
 Reviewed By :Yogesh Patel 09/21/2023
 Supervised By :Ankita Jodhani 09/21/2023

Integration File signal 1: autoint1.e
 Integration File signal 2: autoint2.e
 Quant Time: Sep 21 02:16:07 2023
 Quant Method : Z:\pestpcbsrv\HPCHEM1\ECD_P\methods\PP091823.M
 Quant Title : GC EXTRACTABLES
 QLast Update : Tue Sep 19 09:22:53 2023
 Response via : Initial Calibration
 Integrator: ChemStation

Volume Inj. : 2 µl
 Signal #1 Phase : ZB-MR1 Signal #2 Phase: ZB-MR2
 Signal #1 Info : 30Mx0.32mmx 0.50µ Signal #2 Info : 30M x 0.32mm x 0.25µm





#1 Tetrachloro-m-xylene

R.T.: 4.511 min
 Delta R.T.: 0.001 min
 Response: 97595722
 Conc: 46.91 ng/ml

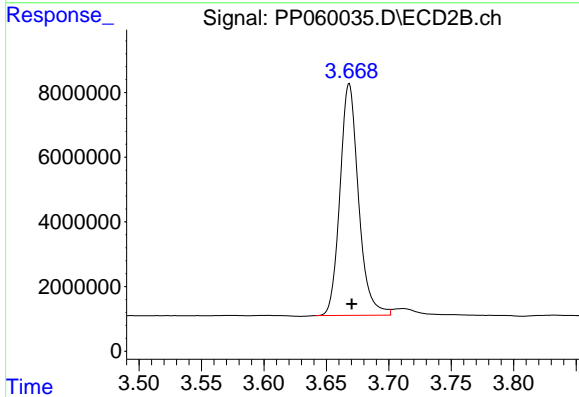
Instrument :

ECD_P

ClientSampleId :
 AR1660CCC500

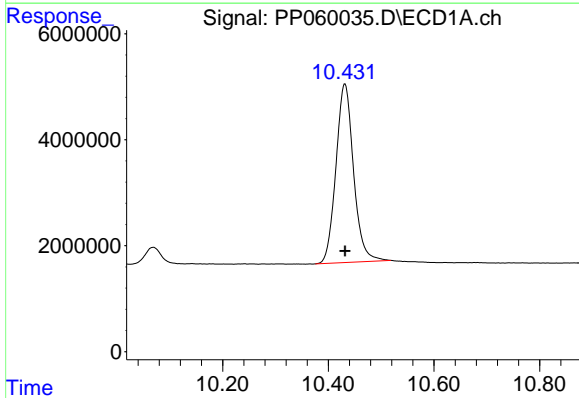
Manual Integrations
 APPROVED

Reviewed By :Yogesh Patel 09/21/2023
 Supervised By :Ankita Jodhani 09/21/2023



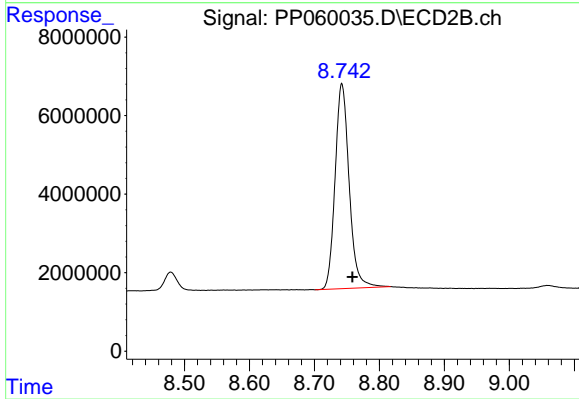
#1 Tetrachloro-m-xylene

R.T.: 3.668 min
 Delta R.T.: -0.002 min
 Response: 74205509
 Conc: 45.56 ng/ml



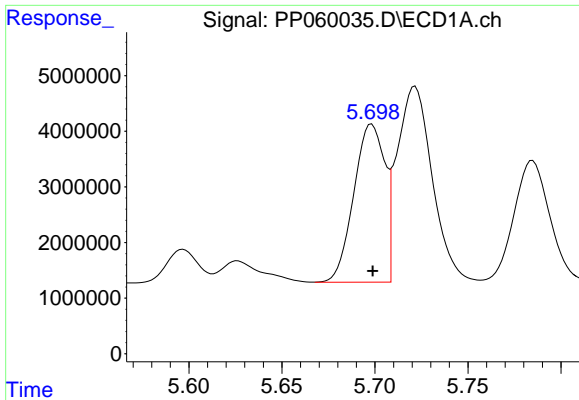
#2 Decachlorobiphenyl

R.T.: 10.431 min
 Delta R.T.: 0.000 min
 Response: 77772206
 Conc: 50.99 ng/ml



#2 Decachlorobiphenyl

R.T.: 8.742 min
 Delta R.T.: -0.016 min
 Response: 78483724
 Conc: 51.83 ng/ml



#3 AR-1016-1

R.T.: 5.698 min
 Delta R.T.: 0.000 min
 Response: 32861745
 Conc: 487.02 ng/ml

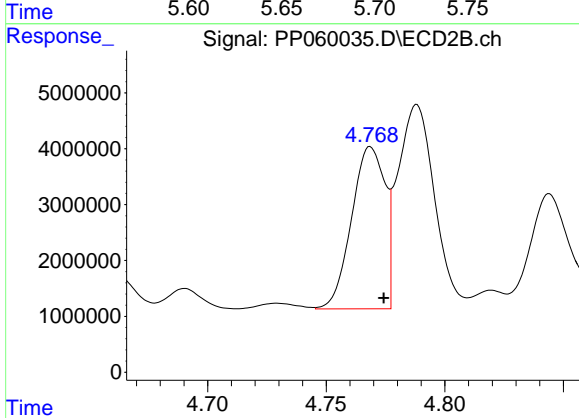
Instrument :

ECD_P

Client Sample Id :
 AR1660CCC500

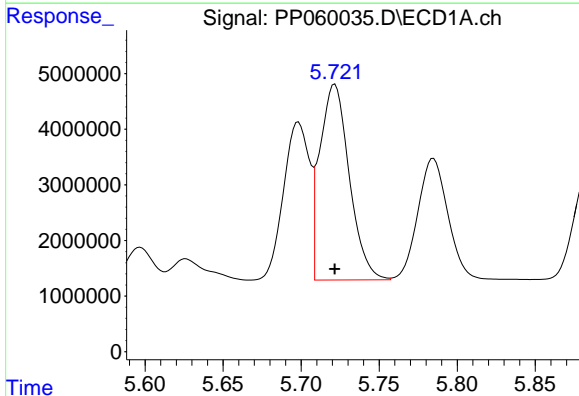
Manual Integrations
 APPROVED

Reviewed By :Yogesh Patel 09/21/2023
 Supervised By :Ankita Jodhani 09/21/2023



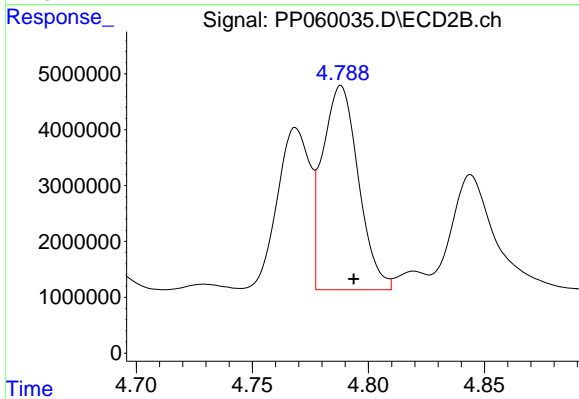
#3 AR-1016-1

R.T.: 4.769 min
 Delta R.T.: -0.006 min
 Response: 28424585
 Conc: 472.83 ng/ml



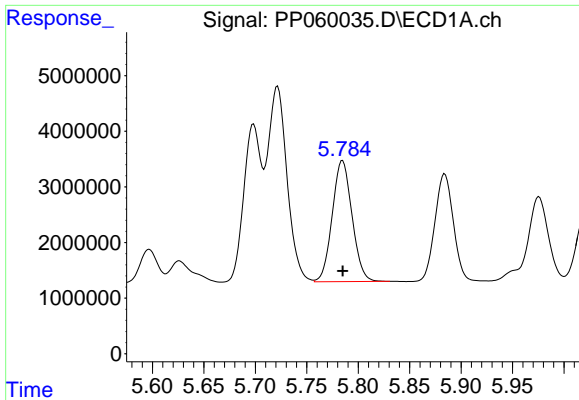
#4 AR-1016-2

R.T.: 5.722 min
 Delta R.T.: 0.000 min
 Response: 46258206
 Conc: 483.56 ng/ml



#4 AR-1016-2

R.T.: 4.788 min
 Delta R.T.: -0.005 min
 Response: 39265197
 Conc: 473.06 ng/ml



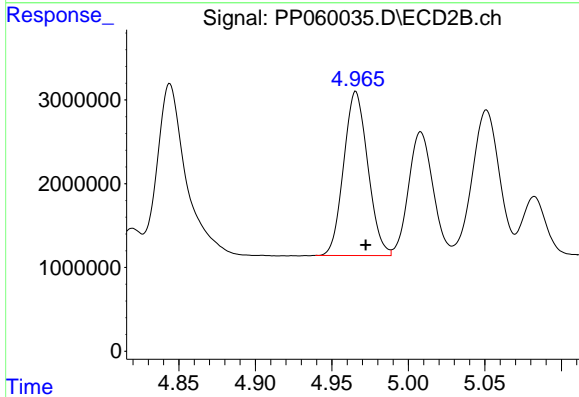
#5 AR-1016-3

R.T.: 5.785 min
 Delta R.T.: 0.000 min
 Response: 29143016
 Conc: 489.61 ng/ml

Instrument :
 ECD_P
 ClientSampleId :
 AR1660CCC500

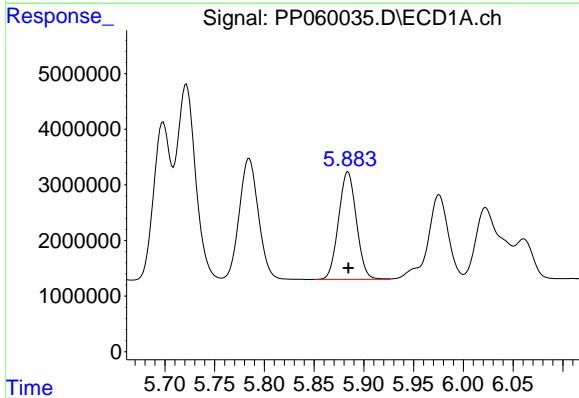
Manual Integrations
 APPROVED

Reviewed By :Yogesh Patel 09/21/2023
 Supervised By :Ankita Jodhani 09/21/2023



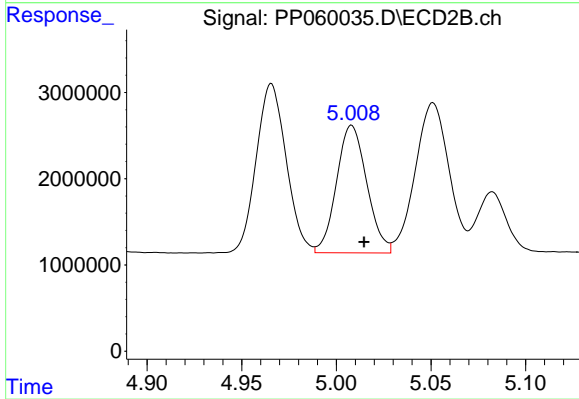
#5 AR-1016-3

R.T.: 4.966 min
 Delta R.T.: -0.006 min
 Response: 21537591
 Conc: 480.12 ng/ml



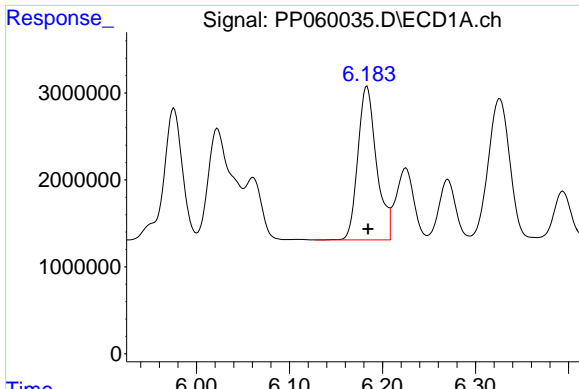
#6 AR-1016-4

R.T.: 5.884 min
 Delta R.T.: 0.000 min
 Response: 24117945
 Conc: 492.54 ng/ml



#6 AR-1016-4

R.T.: 5.008 min
 Delta R.T.: -0.007 min
 Response: 16475630
 Conc: 467.01 ng/ml



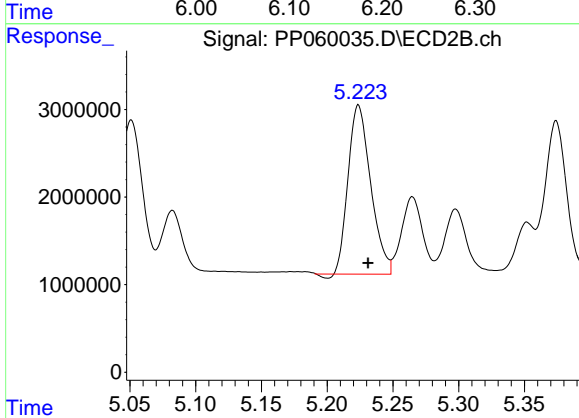
#7 AR-1016-5

R.T.: 6.183 min
 Delta R.T.: -0.001 min
 Response: 24614316
 Conc: 500.62 ng/ml

Instrument :
 ECD_P
 ClientSampleId :
 AR1660CCC500

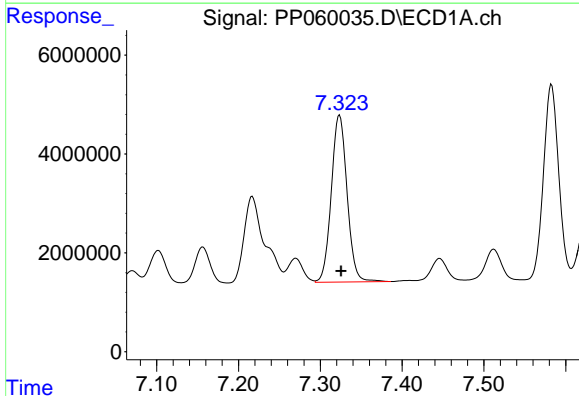
Manual Integrations
 APPROVED

Reviewed By :Yogesh Patel 09/21/2023
 Supervised By :Ankita Jodhani 09/21/2023



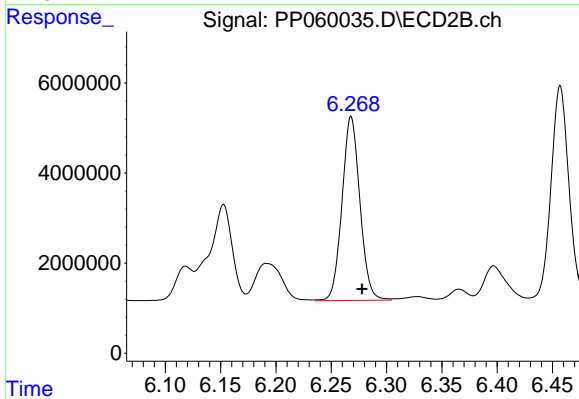
#7 AR-1016-5

R.T.: 5.224 min
 Delta R.T.: -0.007 min
 Response: 23009001
 Conc: 494.85 ng/ml



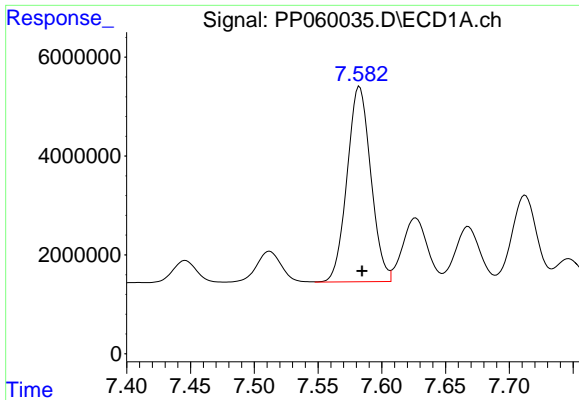
#31 AR-1260-1

R.T.: 7.324 min
 Delta R.T.: -0.002 min
 Response: 45380781
 Conc: 503.46 ng/ml



#31 AR-1260-1

R.T.: 6.268 min
 Delta R.T.: -0.010 min
 Response: 45967047
 Conc: 493.65 ng/ml



#32 AR-1260-2

R.T.: 7.583 min
 Delta R.T.: -0.002 min
 Response: 51141668
 Conc: 498.52 ng/ml

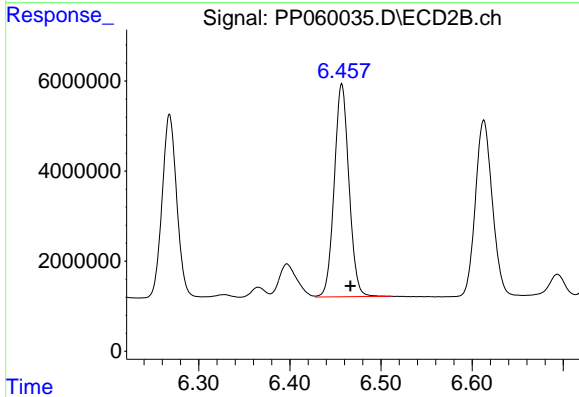
Instrument :

ECD_P

Client Sample Id :
 AR1660CCC500

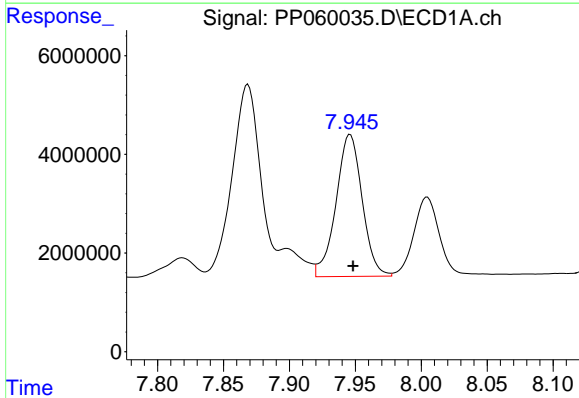
Manual Integrations
 APPROVED

Reviewed By :Yogesh Patel 09/21/2023
 Supervised By :Ankita Jodhani 09/21/2023



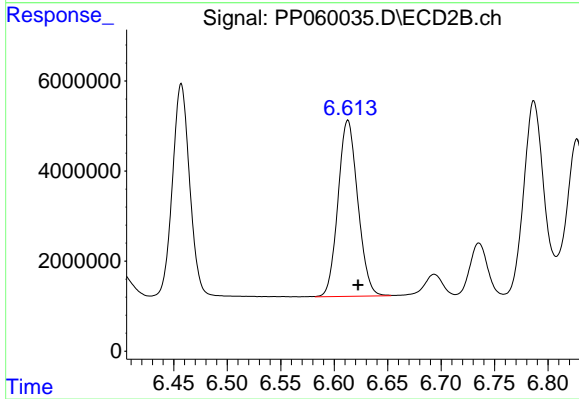
#32 AR-1260-2

R.T.: 6.457 min
 Delta R.T.: -0.009 min
 Response: 52969576
 Conc: 483.14 ng/ml



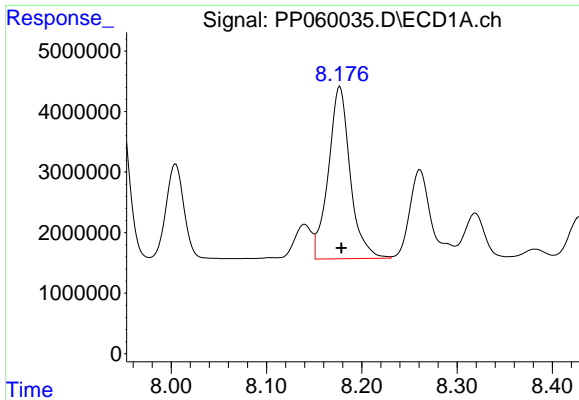
#33 AR-1260-3

R.T.: 7.946 min
 Delta R.T.: -0.002 min
 Response: 39801941
 Conc: 505.37 ng/ml



#33 AR-1260-3

R.T.: 6.613 min
 Delta R.T.: -0.010 min
 Response: 50400011
 Conc: 490.01 ng/ml m



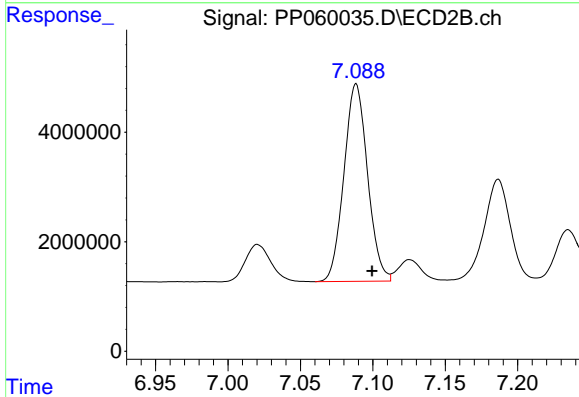
#34 AR-1260-4

R.T.: 8.177 min
 Delta R.T.: -0.002 min
 Response: 45171168
 Conc: 504.03 ng/ml

Instrument :
 ECD_P
 ClientSampleId :
 AR1660CCC500

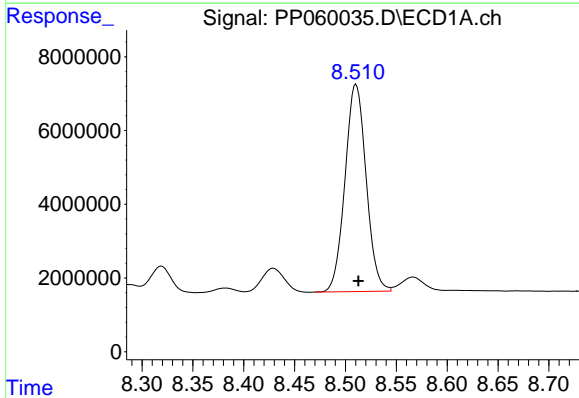
Manual Integrations
 APPROVED

Reviewed By :Yogesh Patel 09/21/2023
 Supervised By :Ankita Jodhani 09/21/2023



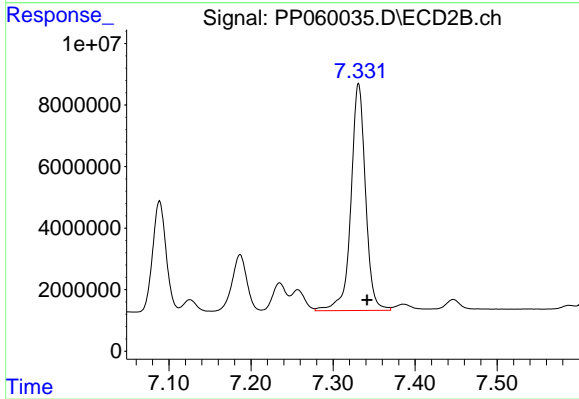
#34 AR-1260-4

R.T.: 7.088 min
 Delta R.T.: -0.011 min
 Response: 40969384
 Conc: 491.92 ng/ml



#35 AR-1260-5

R.T.: 8.510 min
 Delta R.T.: -0.002 min
 Response: 81290400
 Conc: 476.33 ng/ml



#35 AR-1260-5

R.T.: 7.331 min
 Delta R.T.: -0.010 min
 Response: 91033907
 Conc: 473.14 ng/ml