

Data Path : Z:\pestpcbsrv\HPCHEM1\ECD_P\Data\PP092023\
 Data File : PP060038.D
 Signal(s) : Signal #1: ECD1A.ch Signal #2: ECD2B.ch
 Acq On : 20 Sep 2023 19:27
 Operator : YP\AJ
 Sample : AR1254CCC500
 Misc :
 ALS Vial : 6 Sample Multiplier: 1

Instrument :
 ECD_P
ClientSampleId :
 AR1254CCC500

Integration File signal 1: autoint1.e
 Integration File signal 2: autoint2.e
 Quant Time: Sep 21 02:20:41 2023
 Quant Method : Z:\pestpcbsrv\HPCHEM1\ECD_P\methods\PP091823.M
 Quant Title : GC EXTRACTABLES
 QLast Update : Tue Sep 19 09:22:53 2023
 Response via : Initial Calibration
 Integrator: ChemStation

Volume Inj. : 2 µl
 Signal #1 Phase : ZB-MR1 Signal #2 Phase: ZB-MR2
 Signal #1 Info : 30Mx0.32mmx 0.50µ Signal #2 Info : 30M x 0.32mm x 0.25µm

Compound	RT#1	RT#2	Resp#1	Resp#2	ng/ml	ng/ml

System Monitoring Compounds						
1) SA Tetrachlo...	4.510	3.668	102.4E6	80879110	49.245	49.653
2) SA Decachlor...	10.432	8.742	81612147	80056461	53.504	52.872
Target Compounds						
26) L6 AR-1254-1	6.565	5.579	41033432	50619117	513.969	504.391
27) L6 AR-1254-2	6.787	5.729	60384665	43516968	504.162	500.906
28) L6 AR-1254-3	7.157	6.136	61730210	68129373	508.149	485.249
29) L6 AR-1254-4	7.445	6.366	44336925	39274700	498.556	466.581
30) L6 AR-1254-5	7.869	6.788	47625144	57478316	489.592	484.568

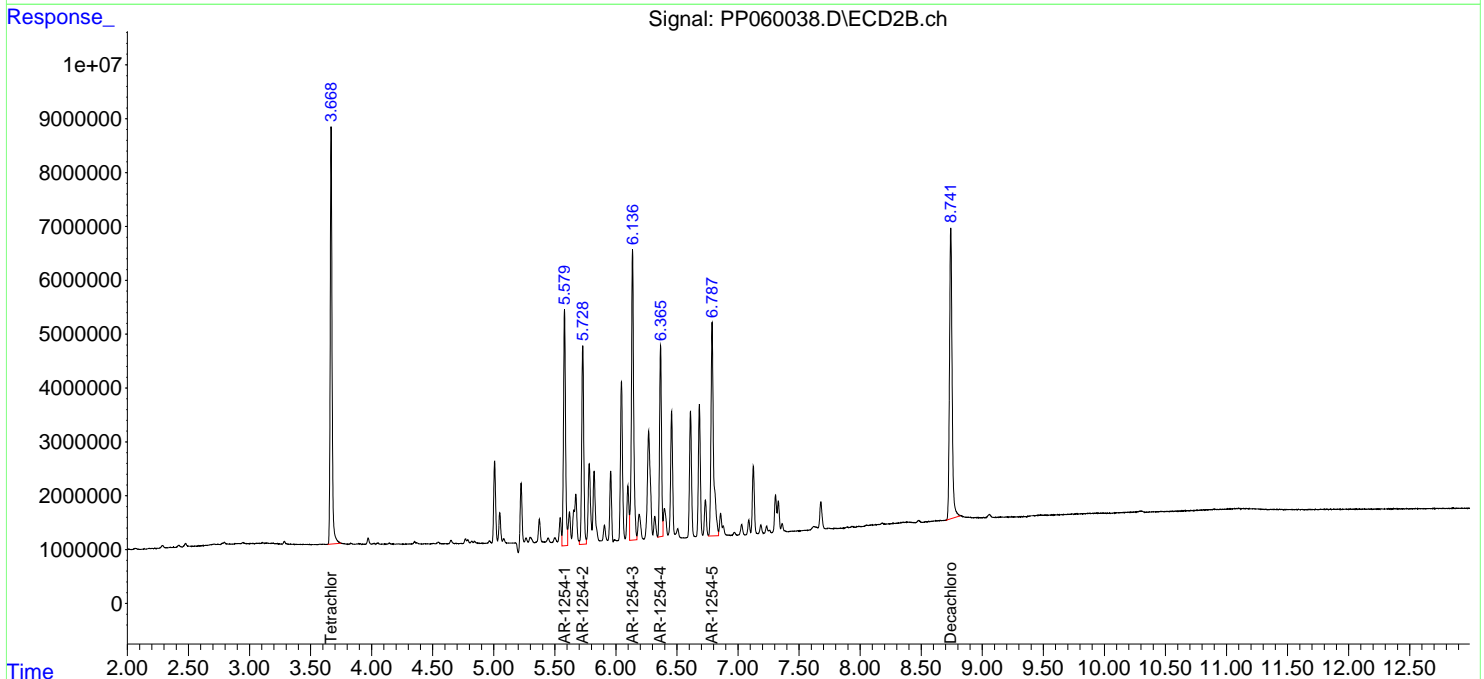
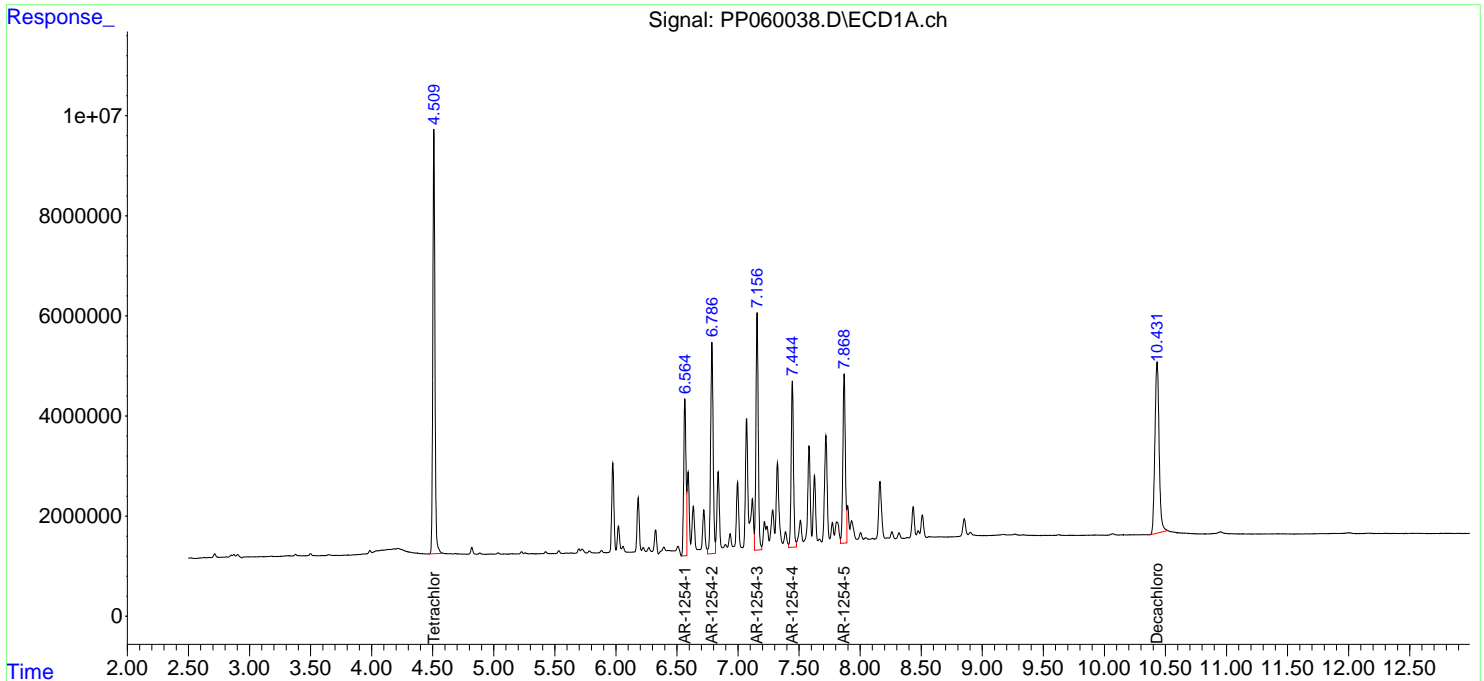
(f)=RT Delta > 1/2 Window (#)=Amounts differ by > 25% (m)=manual int.

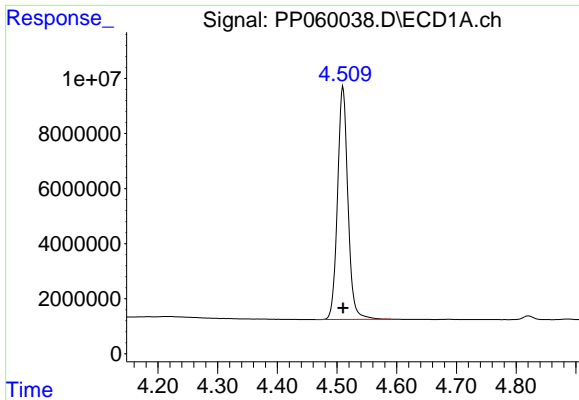
Data Path : Z:\pestpcbsrv\HPCHEM1\ECD_P\Data\PP092023\
 Data File : PP060038.D
 Signal(s) : Signal #1: ECD1A.ch Signal #2: ECD2B.ch
 Acq On : 20 Sep 2023 19:27
 Operator : YP\AJ
 Sample : AR1254CCC500
 Misc :
 ALS Vial : 6 Sample Multiplier: 1

Instrument :
 ECD_P
 ClientSampleId :
 AR1254CCC500

Integration File signal 1: autoint1.e
 Integration File signal 2: autoint2.e
 Quant Time: Sep 21 02:20:41 2023
 Quant Method : Z:\pestpcbsrv\HPCHEM1\ECD_P\methods\PP091823.M
 Quant Title : GC EXTRACTABLES
 QLast Update : Tue Sep 19 09:22:53 2023
 Response via : Initial Calibration
 Integrator: ChemStation

Volume Inj. : 2 µl
 Signal #1 Phase : ZB-MR1 Signal #2 Phase: ZB-MR2
 Signal #1 Info : 30Mx0.32mmx 0.50µ Signal #2 Info : 30M x 0.32mm x 0.25µm

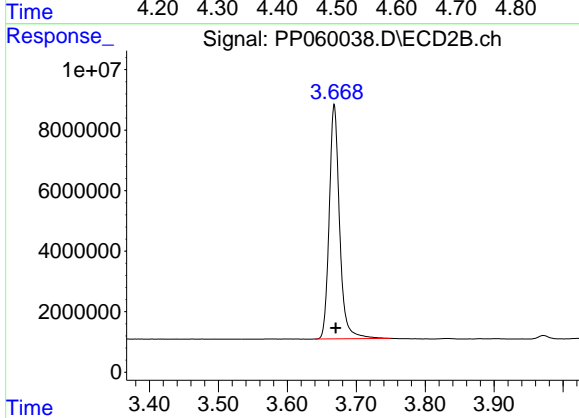




#1 Tetrachloro-m-xylene

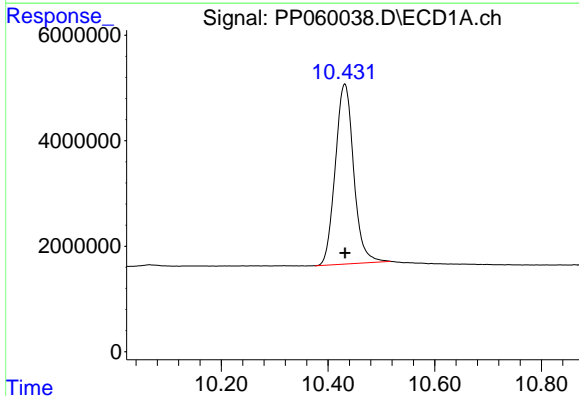
R.T.: 4.510 min
Delta R.T.: 0.000 min
Response: 102442709
Conc: 49.24 ng/ml

Instrument :
ECD_P
ClientSampleId :
AR1254CCC500



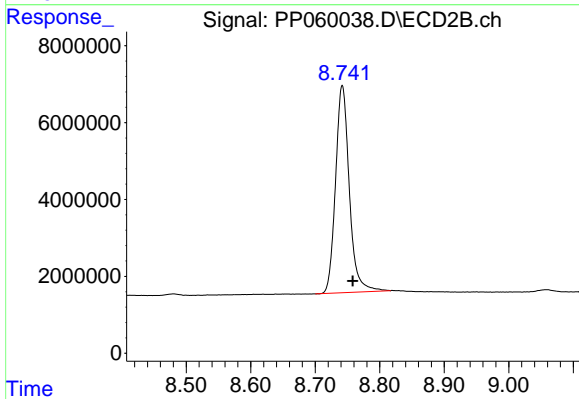
#1 Tetrachloro-m-xylene

R.T.: 3.668 min
Delta R.T.: -0.002 min
Response: 80879110
Conc: 49.65 ng/ml



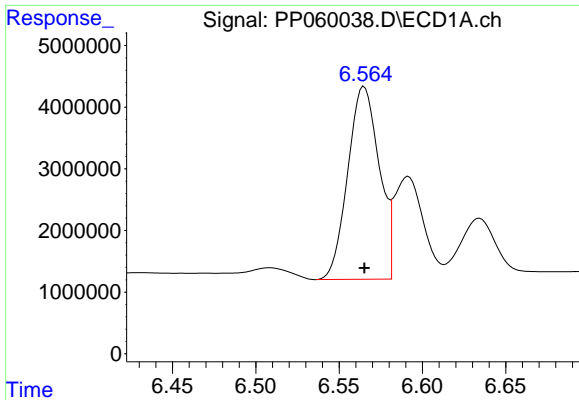
#2 Decachlorobiphenyl

R.T.: 10.432 min
Delta R.T.: 0.000 min
Response: 81612147
Conc: 53.50 ng/ml



#2 Decachlorobiphenyl

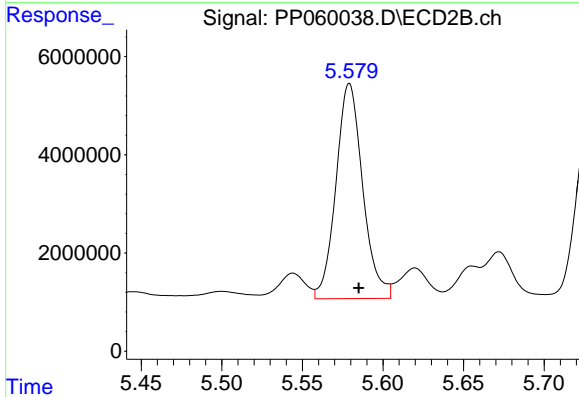
R.T.: 8.742 min
Delta R.T.: -0.016 min
Response: 80056461
Conc: 52.87 ng/ml



#26 AR-1254-1

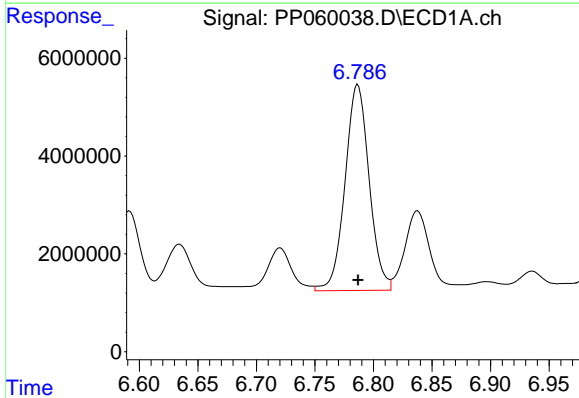
R.T.: 6.565 min
 Delta R.T.: 0.000 min
 Response: 41033432
 Conc: 513.97 ng/ml

Instrument :
 ECD_P
 ClientSampleId :
 AR1254CCC500



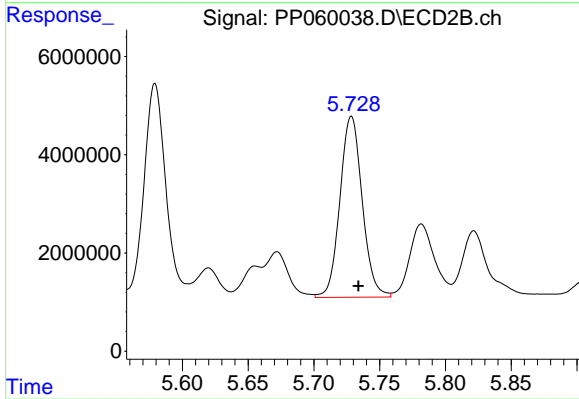
#26 AR-1254-1

R.T.: 5.579 min
 Delta R.T.: -0.006 min
 Response: 50619117
 Conc: 504.39 ng/ml



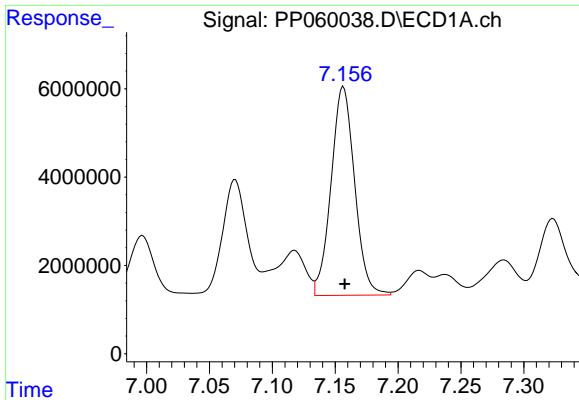
#27 AR-1254-2

R.T.: 6.787 min
 Delta R.T.: 0.000 min
 Response: 60384665
 Conc: 504.16 ng/ml



#27 AR-1254-2

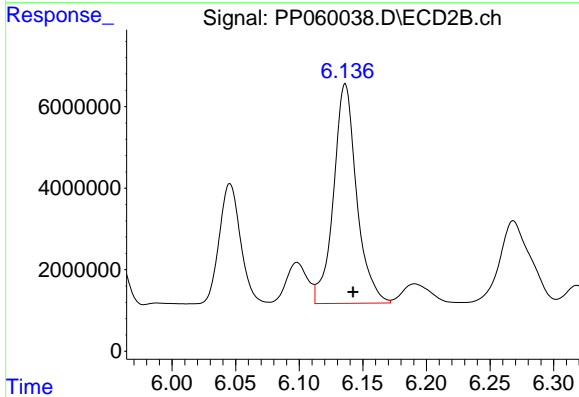
R.T.: 5.729 min
 Delta R.T.: -0.005 min
 Response: 43516968
 Conc: 500.91 ng/ml



#28 AR-1254-3

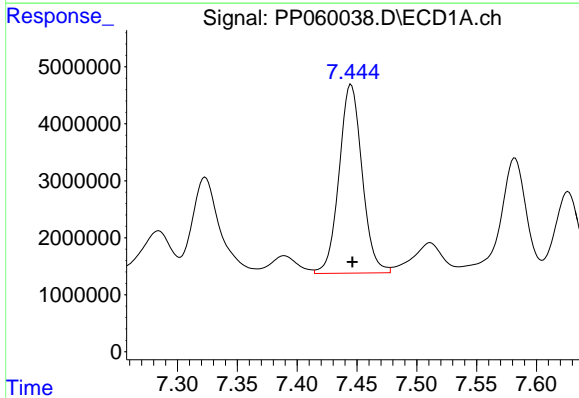
R.T.: 7.157 min
 Delta R.T.: -0.001 min
 Response: 61730210
 Conc: 508.15 ng/ml

Instrument :
 ECD_P
 ClientSampleId :
 AR1254CCC500



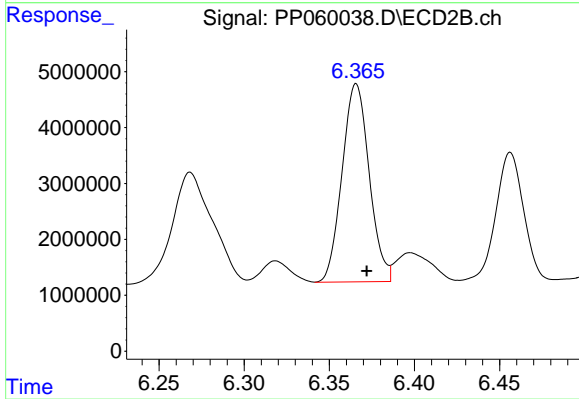
#28 AR-1254-3

R.T.: 6.136 min
 Delta R.T.: -0.006 min
 Response: 68129373
 Conc: 485.25 ng/ml



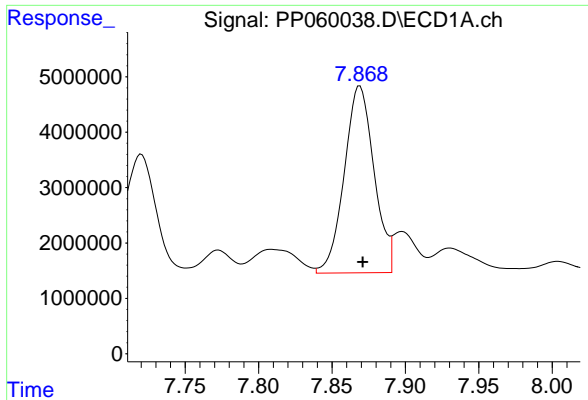
#29 AR-1254-4

R.T.: 7.445 min
 Delta R.T.: -0.001 min
 Response: 44336925
 Conc: 498.56 ng/ml



#29 AR-1254-4

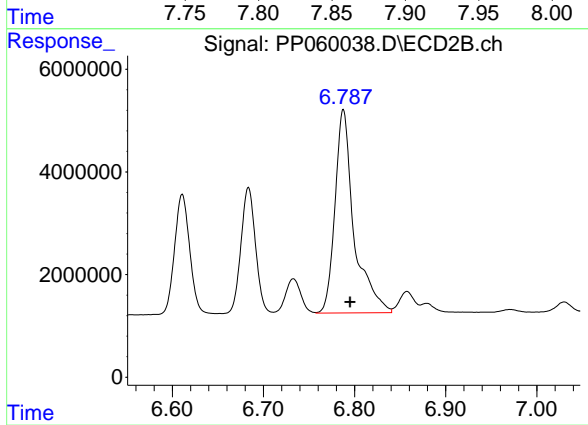
R.T.: 6.366 min
 Delta R.T.: -0.006 min
 Response: 39274700
 Conc: 466.58 ng/ml



#30 AR-1254-5

R.T.: 7.869 min
Delta R.T.: -0.002 min
Response: 47625144
Conc: 489.59 ng/ml

Instrument :
ECD_P
ClientSampleId :
AR1254CCC500



#30 AR-1254-5

R.T.: 6.788 min
Delta R.T.: -0.007 min
Response: 57478316
Conc: 484.57 ng/ml