

Data Path : P:\HPCHEM1\ECD_P\Data\PP092115\
 Data File : PP011771.D
 Signal(s) : Signal #1: ECD1A.CH Signal #2: ECD2B.CH
 Acq On : 21 Sep 2015 15:20
 Operator : IZ/UA
 Sample : G3708-01
 Misc :
 ALS Vial : 8 Sample Multiplier: 1

Instrument :
 ECD_P
ClientSampleId :
 MGP209BR-15-17

Manual Integrations
APPROVED
 ugo
 9/22/2015 11:58:04 AM

Integration File signal 1: autoint1.e
 Integration File signal 2: autoint2.e
 Quant Time: Sep 22 10:37:29 2015
 Quant Method : P:\HPCHEM1\ECD_P\methods\PP090315.M
 Quant Title : GC EXTRACTABLES
 QLast Update : Sat Sep 19 00:23:08 2015
 Response via : Initial Calibration
 Integrator: ChemStation 6890 Scale Mode: Small noise peaks clipped

Volume Inj. : 2 µl
 Signal #1 Phase : ZB-MR1 Signal #2 Phase: ZB-MR2
 Signal #1 Info : 30Mx0.32mmx 0.50µ Signal #2 Info : 30M x 0.32mm x 0.25µm

Compound	RT#1	RT#2	Resp#1	Resp#2	ng/ml	ng/ml

System Monitoring Compounds						
1) SA Tetrachlo...	5.169	4.186	847403	1090357	19.379m	18.988
2) SA Decachlor...	11.495	9.278	517225	809159	13.522m	14.246
Target Compounds						
31) L7 AR-1260-1	7.967	6.748	292390	483406	154.914m	153.933
32) L7 AR-1260-2	8.226	6.930	355525	553487	154.019m	143.161m
33) L7 AR-1260-3	8.618	7.089	192581	560169	109.393m	159.379m#
34) L7 AR-1260-4	8.884	7.791	256606	887716	126.308m	128.512
35) L7 AR-1260-5	9.261	8.140	477518	660430	117.179m	130.478

(f)=RT Delta > 1/2 Window (#)=Amounts differ by > 25% (m)=manual int.

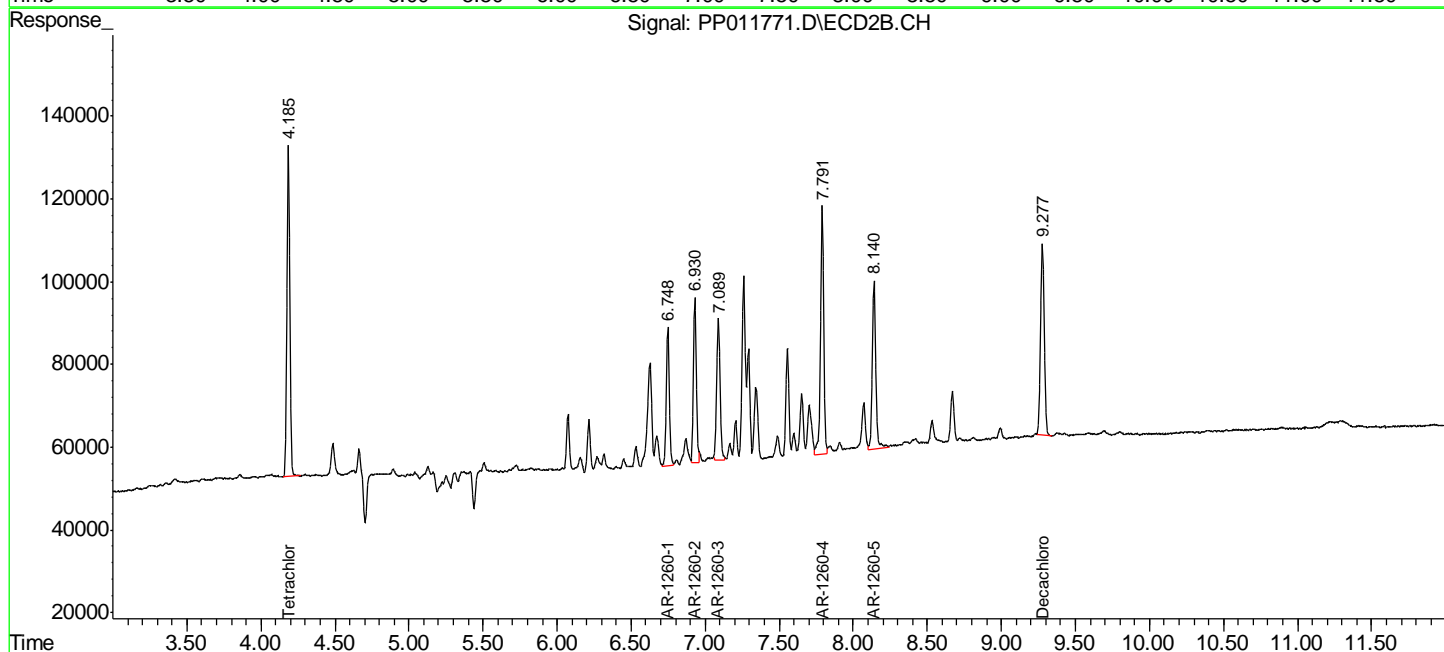
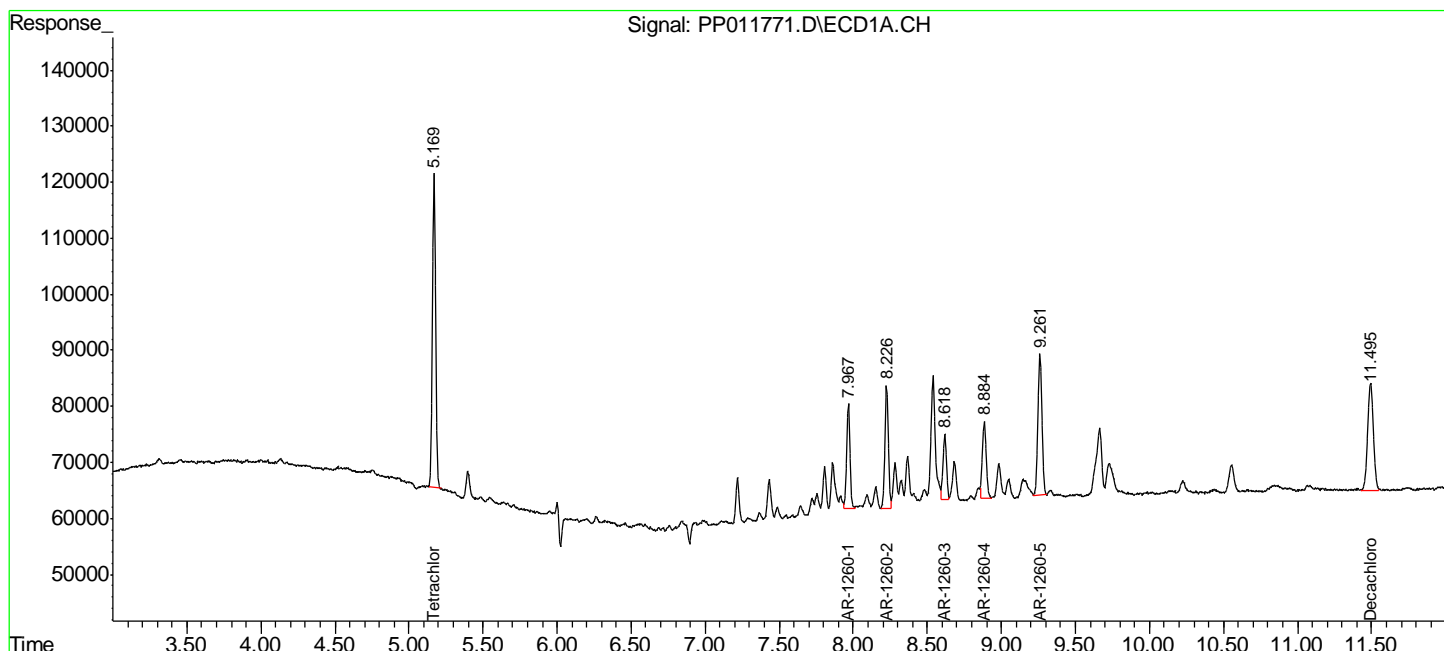
Data Path : P:\HPCHEM1\ECD_P\Data\PP092115\
 Data File : PP011771.D
 Signal(s) : Signal #1: ECD1A.CH Signal #2: ECD2B.CH
 Acq On : 21 Sep 2015 15:20
 Operator : IZ/UA
 Sample : G3708-01
 Misc :
 ALS Vial : 8 Sample Multiplier: 1

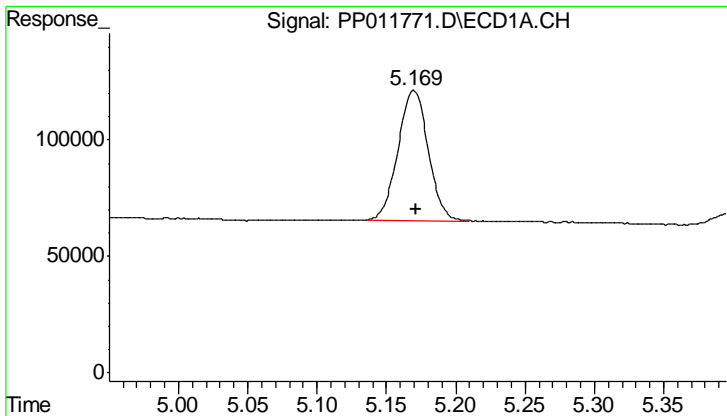
Instrument :
 ECD_P
Client Sampled :
 MGP209BR-15-17

Manual Integrations
APPROVED
 ugo
 9/22/2015 11:58:04 AM

Integration File signal 1: autoint1.e
 Integration File signal 2: autoint2.e
 Quant Time: Sep 22 10:37:29 2015
 Quant Method : P:\HPCHEM1\ECD_P\methods\PP090315.M
 Quant Title : GC EXTRACTABLES
 QLast Update : Sat Sep 19 00:23:08 2015
 Response via : Initial Calibration
 Integrator: ChemStation 6890 Scale Mode: Small noise peaks clipped

Volume Inj. : 2 µl
 Signal #1 Phase : ZB-MR1 Signal #2 Phase: ZB-MR2
 Signal #1 Info : 30Mx0.32mmx 0.50µ Signal #2 Info : 30M x 0.32mm x 0.25µm





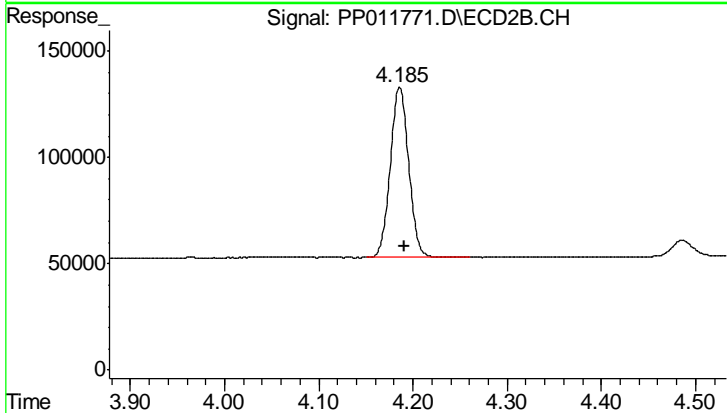
#1 Tetrachloro-m-xylene

R.T.: 5.169 min
 Delta R.T.: -0.002 min
 Response: 847403
 Conc: 19.38 ng/ml

Instrument :
 ECD_P
 ClientSampleId :
 MGP209BR-15-17

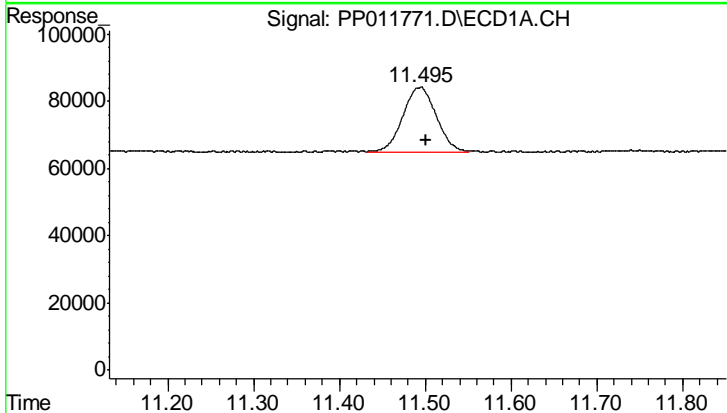
Manual Integrations
 APPROVED

ugo
 9/22/2015 11:58:04 AM



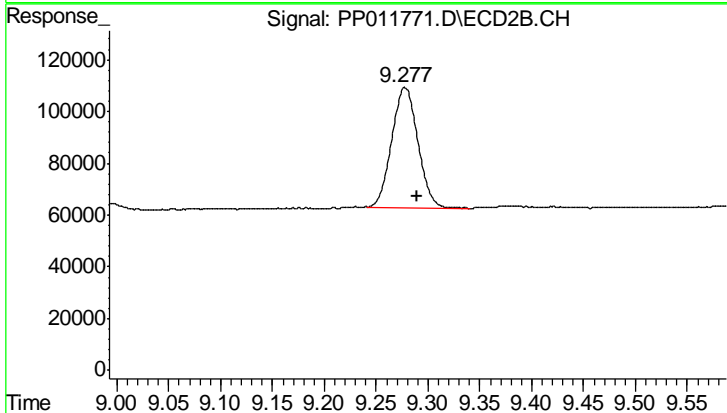
#1 Tetrachloro-m-xylene

R.T.: 4.186 min
 Delta R.T.: -0.005 min
 Response: 1090357
 Conc: 18.99 ng/ml



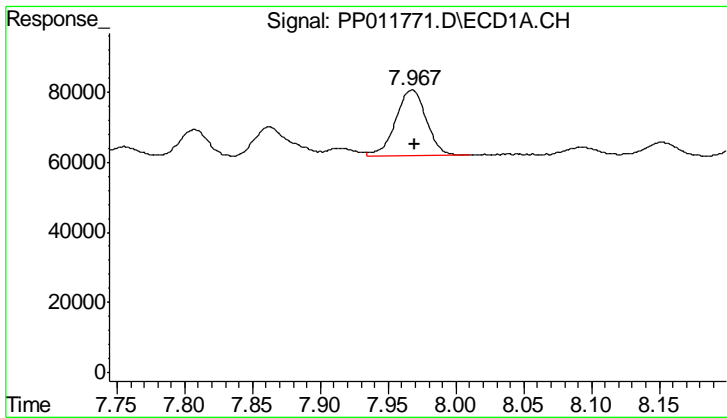
#2 Decachlorobiphenyl

R.T.: 11.495 min
 Delta R.T.: -0.006 min
 Response: 517225
 Conc: 13.52 ng/ml m



#2 Decachlorobiphenyl

R.T.: 9.278 min
 Delta R.T.: -0.012 min
 Response: 809159
 Conc: 14.25 ng/ml



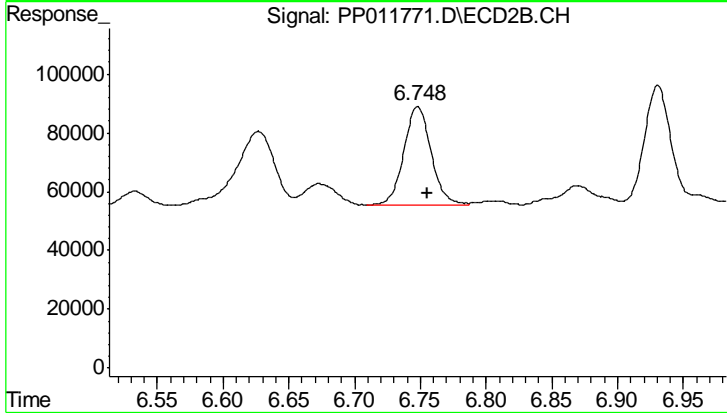
#31 AR-1260-1

R.T.: 7.967 min
 Delta R.T.: -0.003 min
 Response: 292390
 Conc: 154.91 ng/ml

Instrument :
 ECD_P
 ClientSampleId :
 MGP209BR-15-17

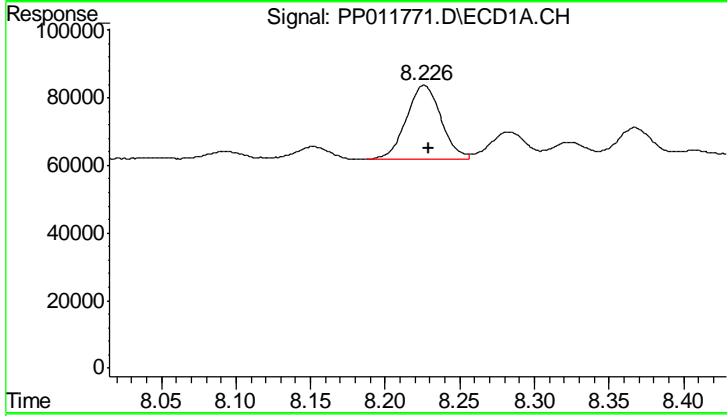
Manual Integrations
 APPROVED

ugo
 9/22/2015 11:58:04 AM



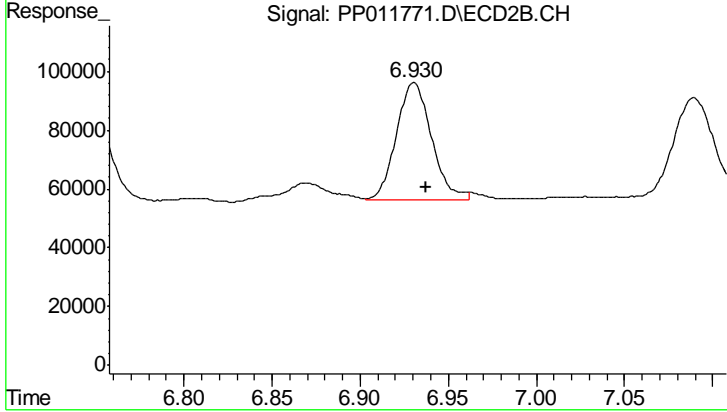
#31 AR-1260-1

R.T.: 6.748 min
 Delta R.T.: -0.007 min
 Response: 483406
 Conc: 153.93 ng/ml



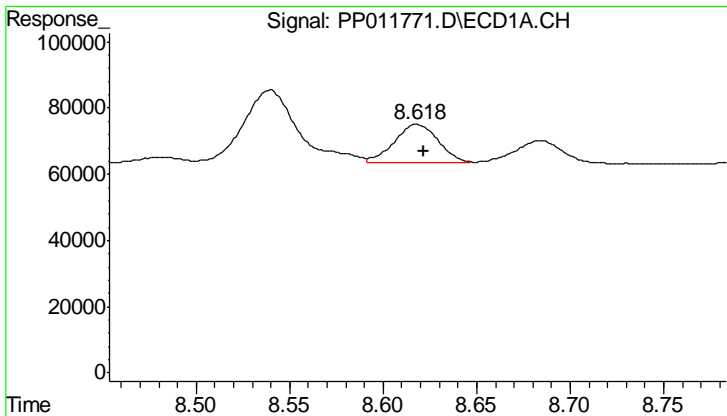
#32 AR-1260-2

R.T.: 8.226 min
 Delta R.T.: -0.003 min
 Response: 355525
 Conc: 154.02 ng/ml m



#32 AR-1260-2

R.T.: 6.930 min
 Delta R.T.: -0.007 min
 Response: 553487
 Conc: 143.16 ng/ml m



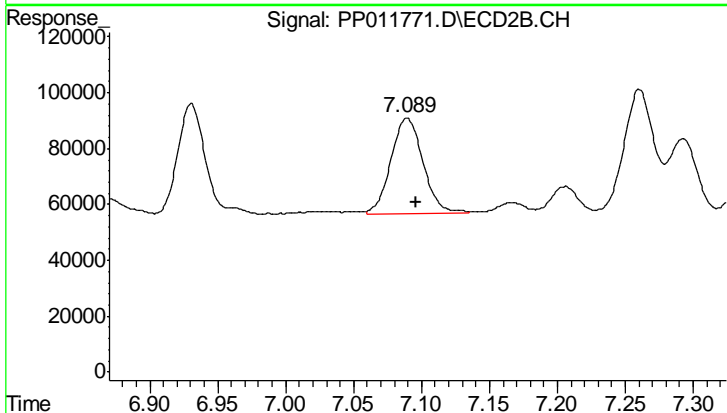
#33 AR-1260-3

R.T.: 8.618 min
 Delta R.T.: -0.003 min
 Response: 192581
 Conc: 109.39 ng/ml

Instrument :
 ECD_P
 ClientSampleId :
 MGP209BR-15-17

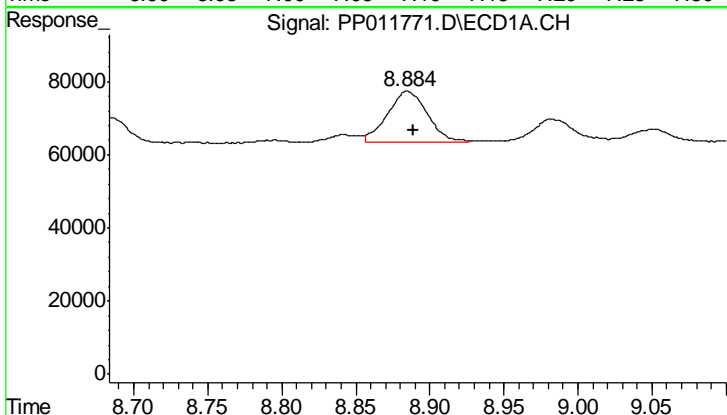
Manual Integrations
 APPROVED

ugo
 9/22/2015 11:58:04 AM



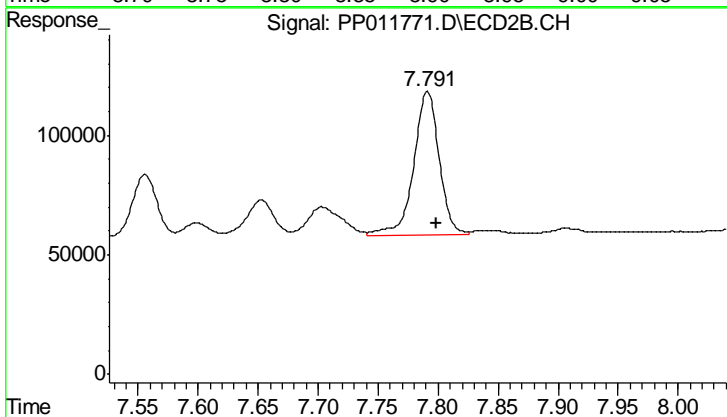
#33 AR-1260-3

R.T.: 7.089 min
 Delta R.T.: -0.007 min
 Response: 560169
 Conc: 159.38 ng/ml m



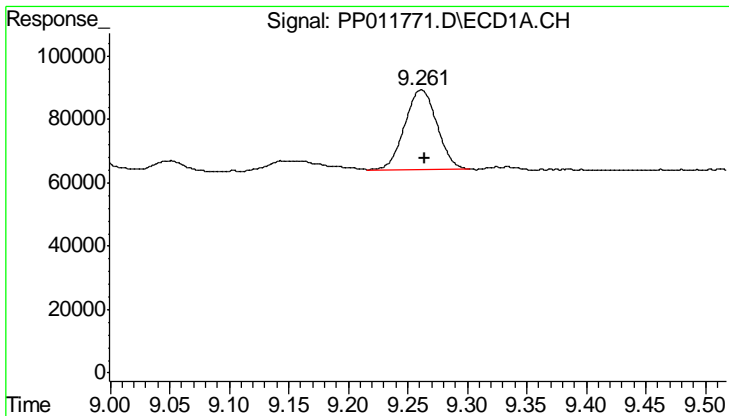
#34 AR-1260-4

R.T.: 8.884 min
 Delta R.T.: -0.004 min
 Response: 256606
 Conc: 126.31 ng/ml m



#34 AR-1260-4

R.T.: 7.791 min
 Delta R.T.: -0.008 min
 Response: 887716
 Conc: 128.51 ng/ml



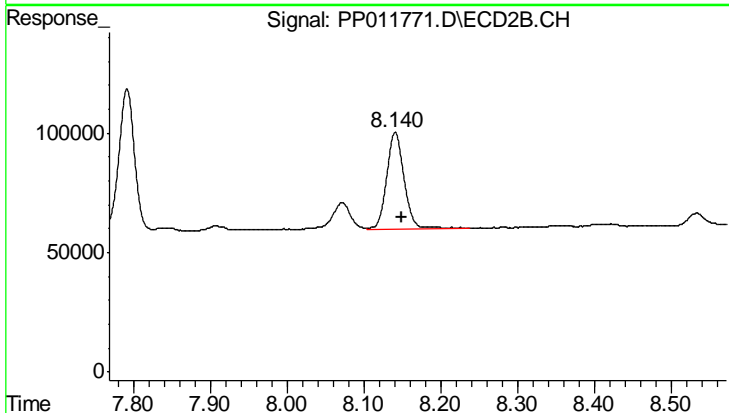
#35 AR-1260-5

R.T.: 9.261 min
 Delta R.T.: -0.003 min
 Response: 477518
 Conc: 117.18 ng/ml

Instrument :
 ECD_P
ClientSampled :
 MGP209BR-15-17

Manual Integrations
APPROVED

ugo
 9/22/2015 11:58:04 AM



#35 AR-1260-5

R.T.: 8.140 min
 Delta R.T.: -0.008 min
 Response: 660430
 Conc: 130.48 ng/ml