

Data Path : Z:\pestpcbsrv\HPCHEM1\ECD\_P\Data\PP092122\  
 Data File : PP051484.D  
 Signal(s) : Signal #1: ECD1A.ch Signal #2: ECD2B.ch  
 Acq On : 21 Sep 2022 11:46  
 Operator : YP\AJ  
 Sample : AR1254CCC500  
 Misc :  
 ALS Vial : 6 Sample Multiplier: 1

**Instrument :**  
 ECD\_P  
**ClientSampleId :**  
 AR1254CCC500

**Manual Integrations  
 APPROVED**

Reviewed By :Yogesh Patel 09/22/2022  
 Supervised By :Ankita Jodhani 09/22/2022

Integration File signal 1: autoint1.e  
 Integration File signal 2: autoint2.e  
 Quant Time: Sep 21 13:57:33 2022  
 Quant Method : Z:\pestpcbsrv\HPCHEM1\ECD\_P\methods\PP091922.M  
 Quant Title : GC EXTRACTABLES  
 QLast Update : Tue Sep 20 14:37:22 2022  
 Response via : Initial Calibration  
 Integrator: ChemStation

Volume Inj. : 2 µl  
 Signal #1 Phase : ZB-MR1 Signal #2 Phase: ZB-MR2  
 Signal #1 Info : 30Mx0.32mmx 0.50µ Signal #2 Info : 30M x 0.32mm x 0.25µm

Compound	RT#1	RT#2	Resp#1	Resp#2	ng/ml	ng/ml
-----						
System Monitoring Compounds						
1) SA Tetrachlo...	4.430	3.683	91581192	75858880	51.535	50.220
2) SA Decachlor...	10.252	8.783	66364694	59638158	42.942	49.773
Target Compounds						
26) L6 AR-1254-1	6.464	5.603	28393194	39065600	456.998	480.928
27) L6 AR-1254-2	6.683	5.752	47936464	33507489	415.280	476.792
28) L6 AR-1254-3	7.051	6.162	51184472	53603486	420.463	477.631
29) L6 AR-1254-4	7.337	6.392	36384467	31261962	439.334	481.631m
30) L6 AR-1254-5	7.758	6.816	39882443	44450980	447.646	475.425
-----						

(f)=RT Delta > 1/2 Window (#)=Amounts differ by > 25% (m)=manual int.

Data Path : Z:\pestpcbsrv\HPCHEM1\ECD\_P\Data\PP092122\  
 Data File : PP051484.D  
 Signal(s) : Signal #1: ECD1A.ch Signal #2: ECD2B.ch  
 Acq On : 21 Sep 2022 11:46  
 Operator : YP\AJ  
 Sample : AR1254CCC500  
 Misc :  
 ALS Vial : 6 Sample Multiplier: 1

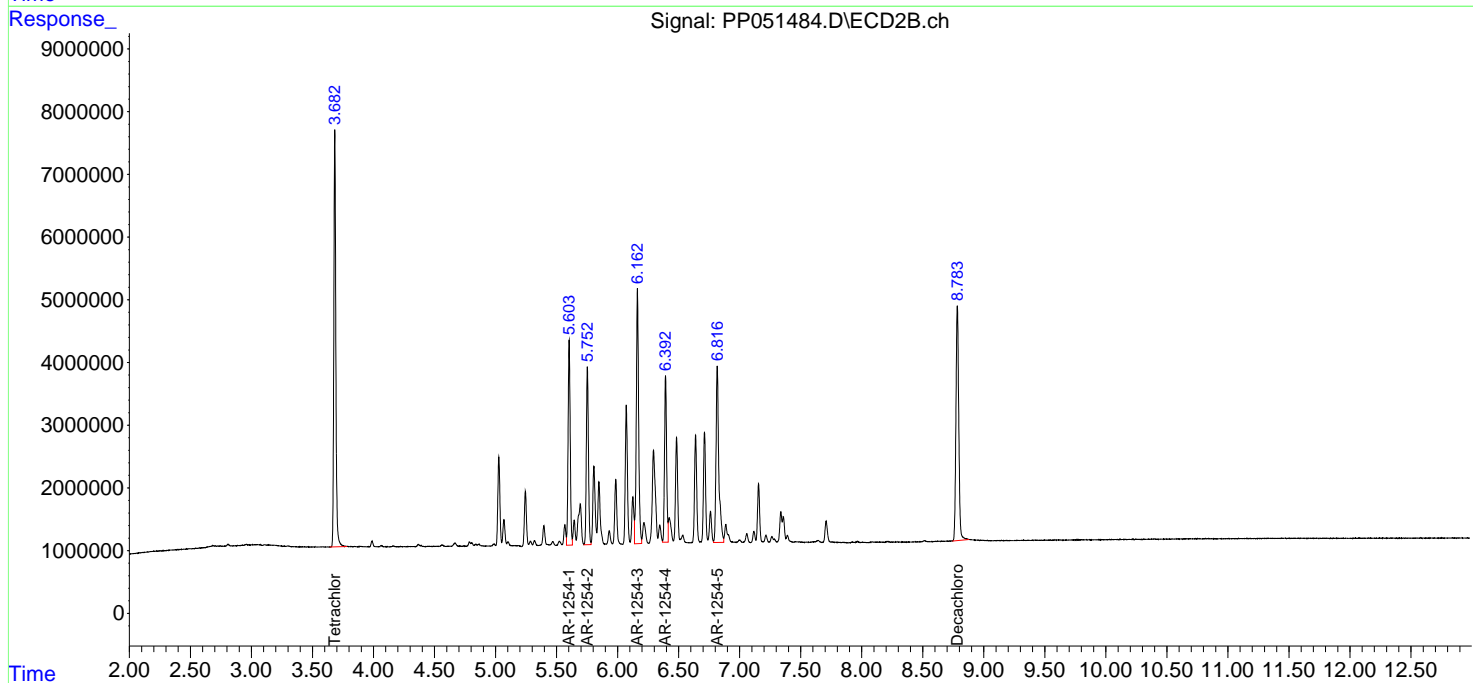
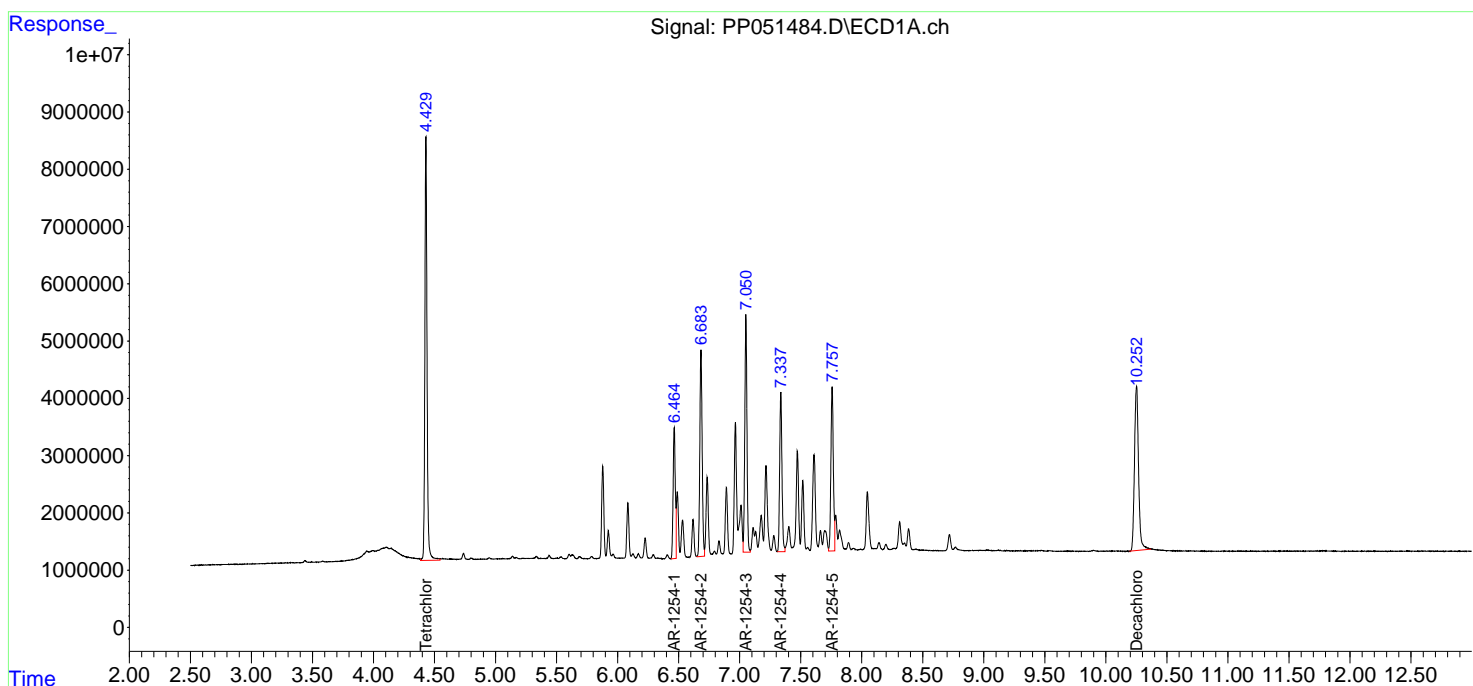
Instrument :  
 ECD\_P  
 ClientSampleId :  
 AR1254CCC500

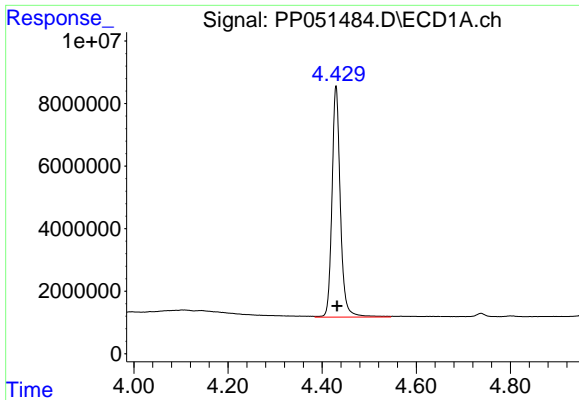
Manual Integrations  
 APPROVED

Reviewed By :Yogesh Patel 09/22/2022  
 Supervised By :Ankita Jodhani 09/22/2022

Integration File signal 1: autoint1.e  
 Integration File signal 2: autoint2.e  
 Quant Time: Sep 21 13:57:33 2022  
 Quant Method : Z:\pestpcbsrv\HPCHEM1\ECD\_P\methods\PP091922.M  
 Quant Title : GC EXTRACTABLES  
 QLast Update : Tue Sep 20 14:37:22 2022  
 Response via : Initial Calibration  
 Integrator: ChemStation

Volume Inj. : 2 µl  
 Signal #1 Phase : ZB-MR1 Signal #2 Phase: ZB-MR2  
 Signal #1 Info : 30Mx0.32mmx 0.50µ Signal #2 Info : 30M x 0.32mm x 0.25µm



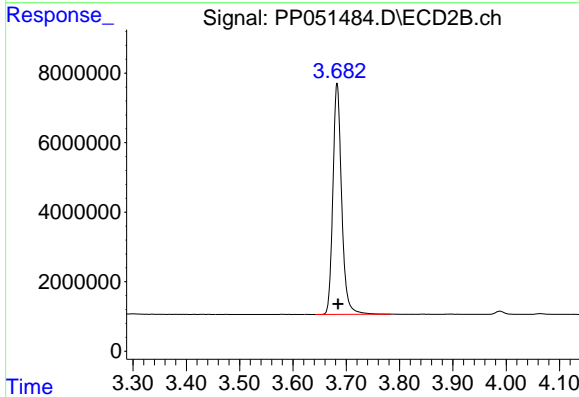


#1 Tetrachloro-m-xylene  
 R.T.: 4.430 min  
 Delta R.T.: -0.002 min  
 Response: 91581192  
 Conc: 51.54 ng/ml

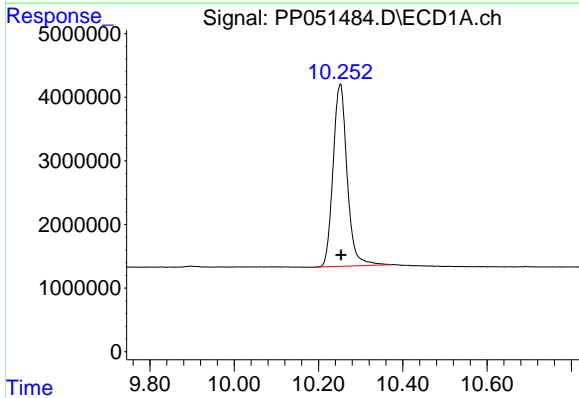
Instrument :  
 ECD\_P  
 ClientSampleId :  
 AR1254CCC500

Manual Integrations  
 APPROVED

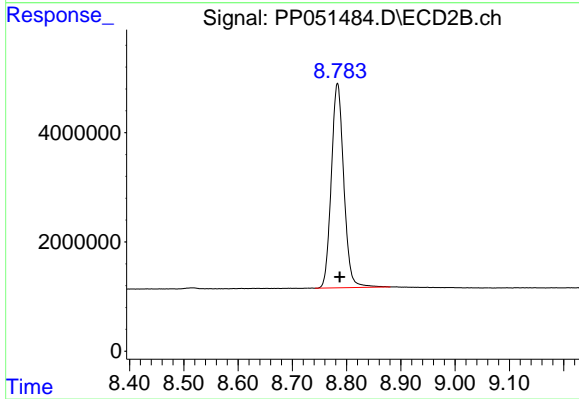
Reviewed By :Yogesh Patel 09/22/2022  
 Supervised By :Ankita Jodhani 09/22/2022



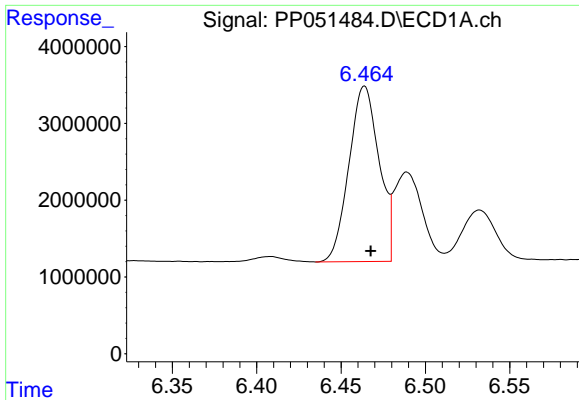
#1 Tetrachloro-m-xylene  
 R.T.: 3.683 min  
 Delta R.T.: -0.002 min  
 Response: 75858880  
 Conc: 50.22 ng/ml



#2 Decachlorobiphenyl  
 R.T.: 10.252 min  
 Delta R.T.: -0.002 min  
 Response: 66364694  
 Conc: 42.94 ng/ml



#2 Decachlorobiphenyl  
 R.T.: 8.783 min  
 Delta R.T.: -0.004 min  
 Response: 59638158  
 Conc: 49.77 ng/ml



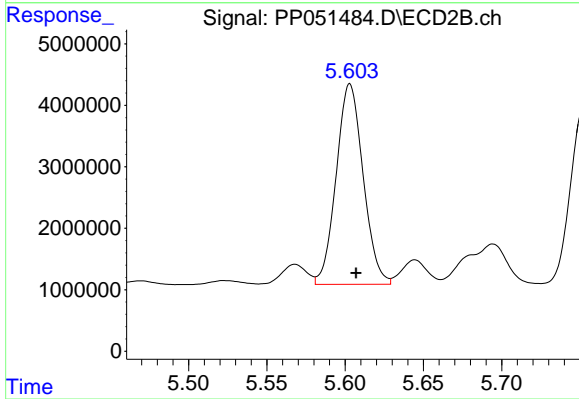
#26 AR-1254-1

R.T.: 6.464 min  
 Delta R.T.: -0.004 min  
 Response: 28393194  
 Conc: 457.00 ng/ml

Instrument :  
 ECD\_P  
 ClientSampleId :  
 AR1254CCC500

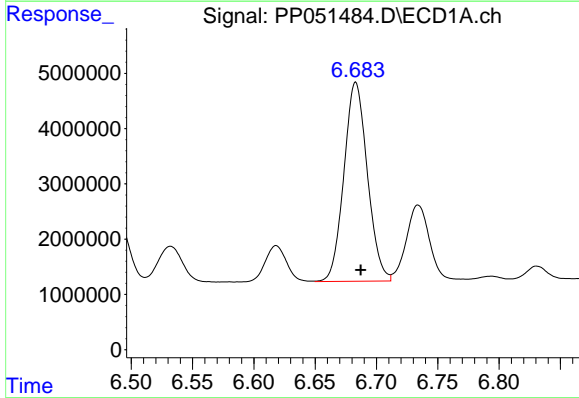
Manual Integrations  
 APPROVED

Reviewed By :Yogesh Patel 09/22/2022  
 Supervised By :Ankita Jodhani 09/22/2022



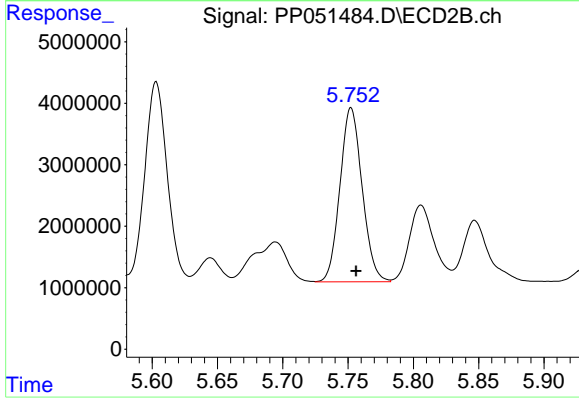
#26 AR-1254-1

R.T.: 5.603 min  
 Delta R.T.: -0.004 min  
 Response: 39065600  
 Conc: 480.93 ng/ml



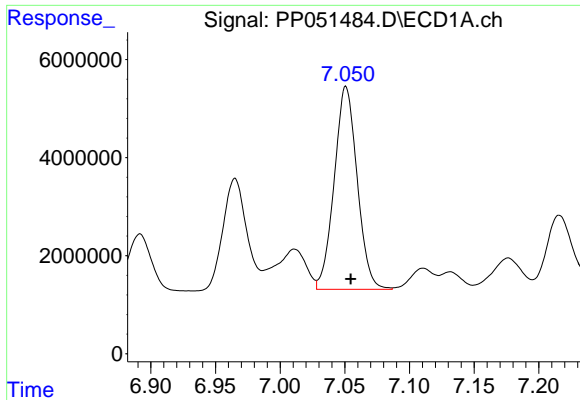
#27 AR-1254-2

R.T.: 6.683 min  
 Delta R.T.: -0.004 min  
 Response: 47936464  
 Conc: 415.28 ng/ml



#27 AR-1254-2

R.T.: 5.752 min  
 Delta R.T.: -0.004 min  
 Response: 33507489  
 Conc: 476.79 ng/ml



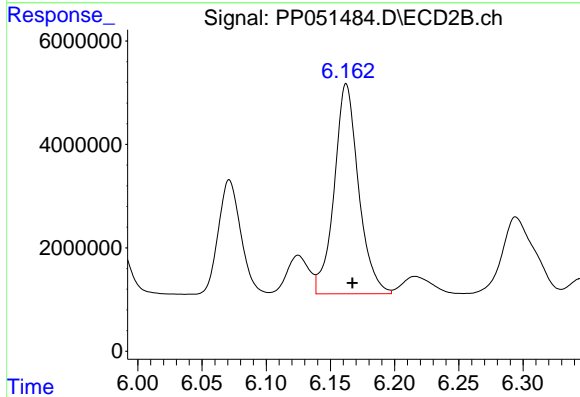
#28 AR-1254-3

R.T.: 7.051 min  
 Delta R.T.: -0.004 min  
 Response: 51184472  
 Conc: 420.46 ng/ml

Instrument :  
 ECD\_P  
 ClientSampleId :  
 AR1254CCC500

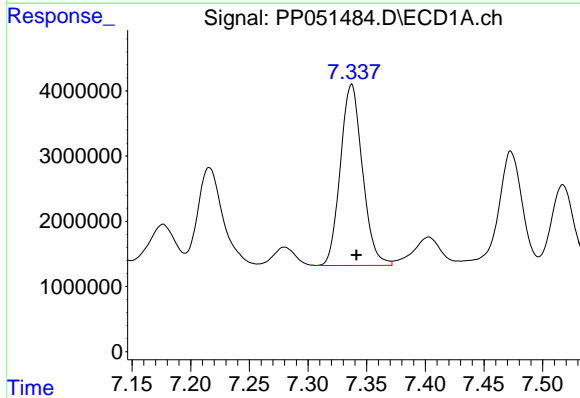
Manual Integrations  
 APPROVED

Reviewed By :Yogesh Patel 09/22/2022  
 Supervised By :Ankita Jodhani 09/22/2022



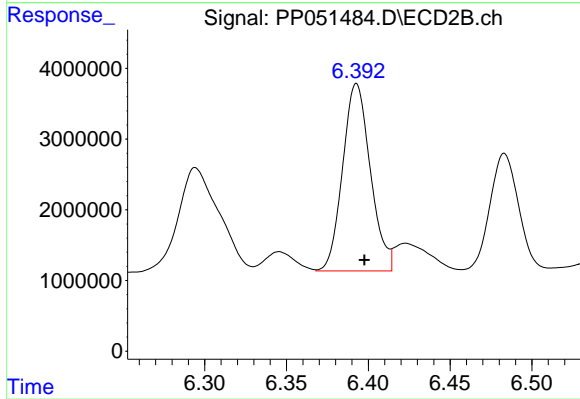
#28 AR-1254-3

R.T.: 6.162 min  
 Delta R.T.: -0.005 min  
 Response: 53603486  
 Conc: 477.63 ng/ml



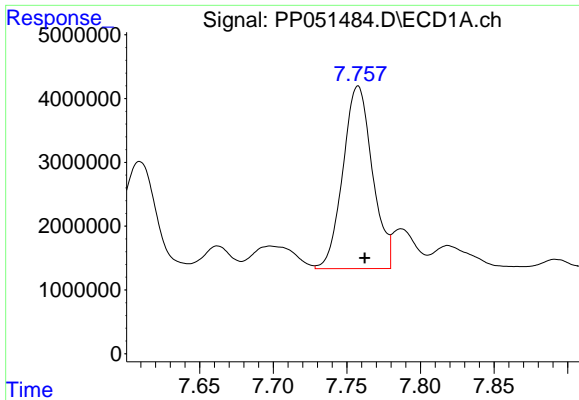
#29 AR-1254-4

R.T.: 7.337 min  
 Delta R.T.: -0.004 min  
 Response: 36384467  
 Conc: 439.33 ng/ml



#29 AR-1254-4

R.T.: 6.392 min  
 Delta R.T.: -0.005 min  
 Response: 31261962  
 Conc: 481.63 ng/ml m



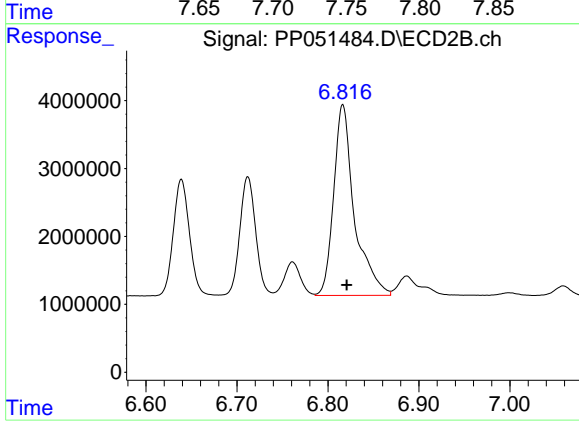
#30 AR-1254-5

R.T.: 7.758 min  
 Delta R.T.: -0.005 min  
 Response: 39882443  
 Conc: 447.65 ng/ml

Instrument :  
 ECD\_P  
 ClientSampleId :  
 AR1254CCC500

Manual Integrations  
 APPROVED

Reviewed By :Yogesh Patel 09/22/2022  
 Supervised By :Ankita Jodhani 09/22/2022



#30 AR-1254-5

R.T.: 6.816 min  
 Delta R.T.: -0.004 min  
 Response: 44450980  
 Conc: 475.42 ng/ml