

Data Path : Z:\pestpcbsrv\HPCHEM1\ECD\_P\Data\PP092123\  
 Data File : PP060086.D  
 Signal(s) : Signal #1: ECD1A.ch Signal #2: ECD2B.ch  
 Acq On : 21 Sep 2023 11:02  
 Operator : YP\AJ  
 Sample : 04510-01DL 10X  
 Misc :  
 ALS Vial : 8 Sample Multiplier: 1

Instrument :  
 ECD\_P  
 ClientSampleId :

Integration File signal 1: autoint1.e  
 Integration File signal 2: autoint2.e  
 Quant Time: Sep 21 11:34:03 2023  
 Quant Method : Z:\pestpcbsrv\HPCHEM1\ECD\_P\methods\PP091823.M  
 Quant Title : GC EXTRACTABLES  
 QLast Update : Tue Sep 19 09:22:53 2023  
 Response via : Initial Calibration  
 Integrator: ChemStation

Volume Inj. : 2 µl  
 Signal #1 Phase : ZB-MR1 Signal #2 Phase: ZB-MR2  
 Signal #1 Info : 30Mx0.32mmx 0.50µ Signal #2 Info : 30M x 0.32mm x 0.25µm

Compound	RT#1	RT#2	Resp#1	Resp#2	ng/ml	ng/ml
System Monitoring Compounds						
1) SA Tetrachlo...	4.508	3.666	3791404	3267808	1.823	2.006
2) SA Decachlor...	10.426	8.738	3774449	3947986	2.474	2.607
Target Compounds						
3) L1 AR-1016-1	5.696	4.766	129.3E6	101.8E6	1916.506	1692.850
4) L1 AR-1016-2	5.719	4.785	187.2E6	147.1E6	1956.487	1772.541
5) L1 AR-1016-3	5.782	4.963	123.5E6	85869449	2075.065	1914.208
6) L1 AR-1016-4	5.883	5.005	107.6E6	57403412	2197.198	1627.132 #
7) L1 AR-1016-5	6.181	5.221	116.6E6	98010758	2372.096	2107.916
8) L2 AR-1221-1	4.715	3.883	8428523	5441624	317.063	247.742
9) L2 AR-1221-2	4.807	3.970	10877074	6406083	552.611	414.931
10) L2 AR-1221-3	4.885	4.047	37417463	29512109	655.081	629.213
11) L3 AR-1232-1	4.885	4.047	37417463	29512109	802.008	776.358
12) L3 AR-1232-2	5.424	4.785	59914306	147.1E6	2358.949	3990.009 #
13) L3 AR-1232-3	5.719	4.963	187.2E6	85869449	4332.068	4288.434
14) L3 AR-1232-4	5.883	5.047	107.6E6	70294743	4867.621	3848.279
15) L3 AR-1232-5	5.974	5.221	77250978	98010758	4210.927	4888.494
16) L4 AR-1242-1	5.696	4.766	129.3E6	101.8E6	2165.171	1932.486
17) L4 AR-1242-2	5.719	4.785	187.2E6	147.1E6	2227.108	2041.788
18) L4 AR-1242-3	5.782	4.963	123.5E6	85869449	2361.579	2194.262
19) L4 AR-1242-4	5.883	5.047	107.6E6	70294743	2496.712	1793.716 #
20) L4 AR-1242-5	6.629	5.576	93883529	104.6E6	2053.469	2162.539
21) L5 AR-1248-1	5.696	4.766	129.3E6	101.8E6	2893.199	2604.550
22) L5 AR-1248-2	5.974	5.005	77250978	57403412	1192.810	1059.425
23) L5 AR-1248-3	6.181	5.047	116.6E6	70294743	1646.806	1235.416
24) L5 AR-1248-4	6.590	5.221	96181173	98010758	1243.548	1459.290
25) L5 AR-1248-5	6.629	5.618	93883529	75717692	1247.783	1147.868
26) L6 AR-1254-1	6.562	5.576	78025369	104.6E6	977.316	1042.516
27) L6 AR-1254-2	6.788	5.725	82602720	26571225	689.665	305.850 #
28) L6 AR-1254-3	7.155	6.147	25345355	19290070	208.637	137.393 #
29) L6 AR-1254-4	7.444	6.362	13139817	8369715	147.754	99.432 #
30) L6 AR-1254-5	7.866	6.783	46922820	41896489	482.372	353.206 #
31) L7 AR-1260-1	7.321	6.264	46508751	47595888	515.969	511.144
32) L7 AR-1260-2	7.581	6.453	43673652	39436045	425.720	359.696
33) L7 AR-1260-3	7.944	6.609	26065326	42397752	330.953	412.211
34) L7 AR-1260-4	8.174	7.084	29268931	24045625	326.588	288.719
35) L7 AR-1260-5	8.508	7.327	30860303	33028703	180.829	171.664
36) L8 AR-1262-1	7.944	6.876	26065326	13249533	225.219	262.503
37) L8 AR-1262-2	8.508	7.084	30860303	24045625	154.155	212.841 #
38) L8 AR-1262-3	8.849	7.613	18748705	5394264	130.199	61.540 #
39) L8 AR-1262-4	8.910f	7.676	10490329	20827240	92.380	127.535 #
40) L8 AR-1262-5	9.623	8.177	4196087	3295672	56.246	44.152
41) L9 AR-1268-1	8.849	7.613	18748705	5394264	74.768	20.719 #

Data Path : Z:\pestpcbsrv\HPCHEM1\ECD\_P\Data\PP092123\  
 Data File : PP060086.D  
 Signal(s) : Signal #1: ECD1A.ch Signal #2: ECD2B.ch  
 Acq On : 21 Sep 2023 11:02  
 Operator : YP\AJ  
 Sample : 04510-01DL 10X  
 Misc :  
 ALS Vial : 8 Sample Multiplier: 1

Instrument :  
 ECD\_P  
 ClientSampleId :

Integration File signal 1: autoint1.e  
 Integration File signal 2: autoint2.e  
 Quant Time: Sep 21 11:34:03 2023  
 Quant Method : Z:\pestpcbsrv\HPCHEM1\ECD\_P\methods\PP091823.M  
 Quant Title : GC EXTRACTABLES  
 QLast Update : Tue Sep 19 09:22:53 2023  
 Response via : Initial Calibration  
 Integrator: ChemStation

Volume Inj. : 2 µl  
 Signal #1 Phase : ZB-MR1 Signal #2 Phase: ZB-MR2  
 Signal #1 Info : 30Mx0.32mmx 0.50µ Signal #2 Info : 30M x 0.32mm x 0.25µm

	Compound	RT#1	RT#2	Resp#1	Resp#2	ng/ml	ng/ml
42)	L9 AR-1268-2	8.910f	7.676	10490329	20827240	45.709	90.087 #
43)	L9 AR-1268-3	0.000	7.888	0	237096	N.D.	1.161 #
44)	L9 AR-1268-4	9.623	8.177	4196087	3295672	50.661	40.816
45)	L9 AR-1268-5	10.062	8.475	1032272	892544	1.706	1.413

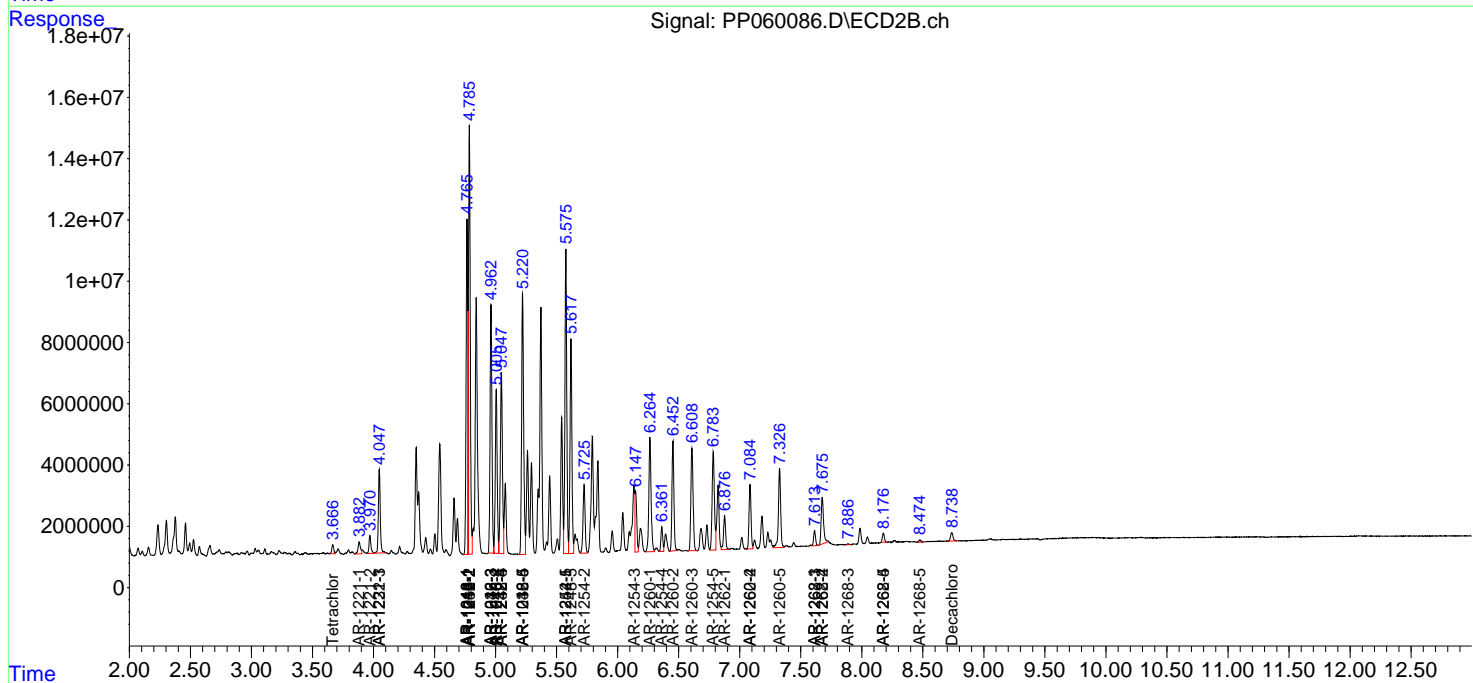
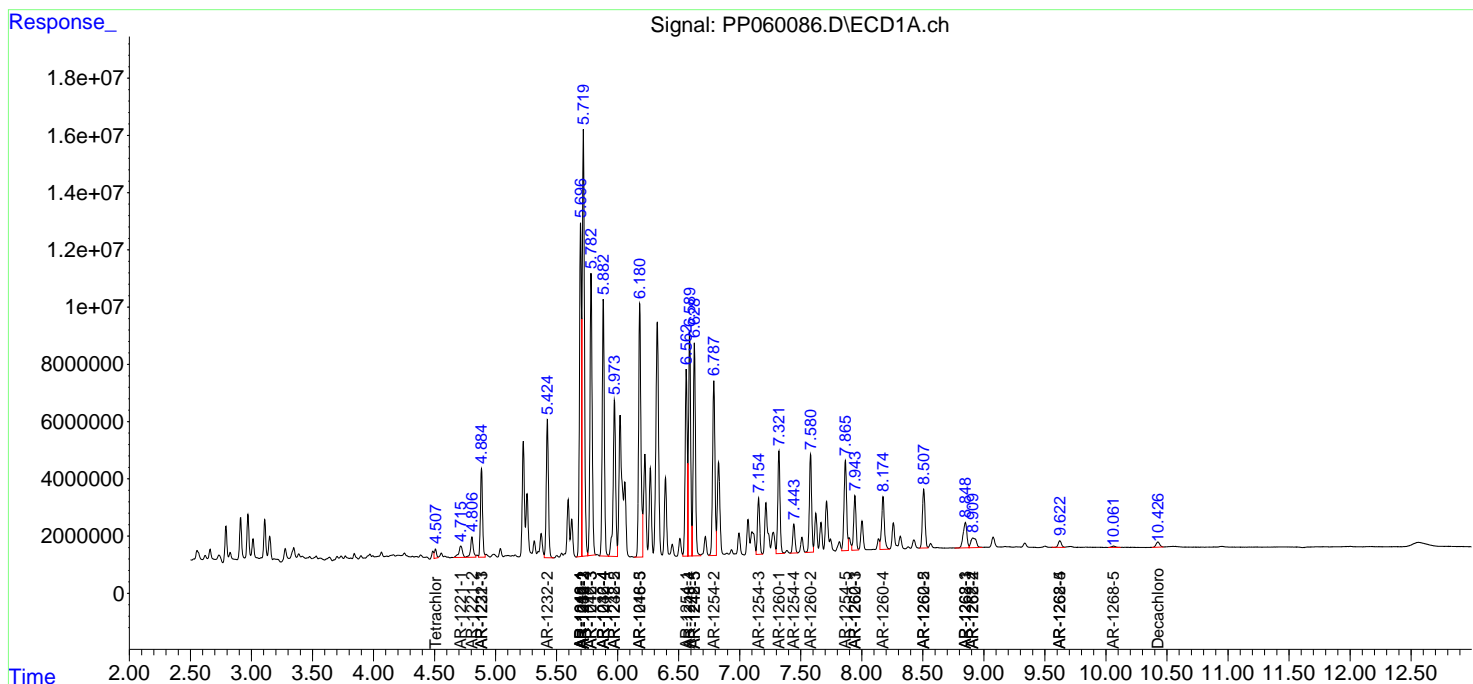
(f)=RT Delta > 1/2 Window (#)=Amounts differ by > 25% (m)=manual int.

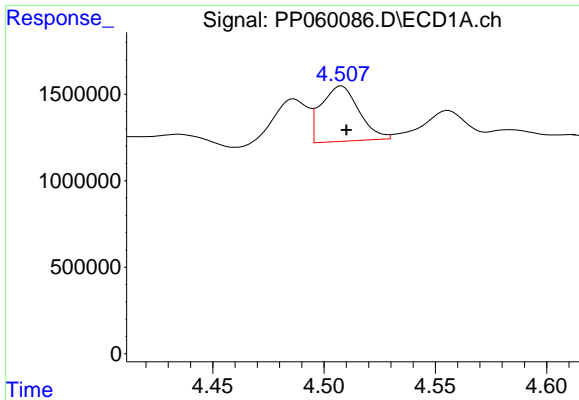
Data Path : Z:\pestpcbsrv\HPCHEM1\ECD\_P\Data\PP092123\  
 Data File : PP060086.D  
 Signal(s) : Signal #1: ECD1A.ch Signal #2: ECD2B.ch  
 Acq On : 21 Sep 2023 11:02  
 Operator : YP\AJ  
 Sample : 04510-01DL 10X  
 Misc :  
 ALS Vial : 8 Sample Multiplier: 1

Instrument :  
 ECD\_P  
 ClientSampleId :

Integration File signal 1: autoint1.e  
 Integration File signal 2: autoint2.e  
 Quant Time: Sep 21 11:34:03 2023  
 Quant Method : Z:\pestpcbsrv\HPCHEM1\ECD\_P\methods\PP091823.M  
 Quant Title : GC EXTRACTABLES  
 QLast Update : Tue Sep 19 09:22:53 2023  
 Response via : Initial Calibration  
 Integrator: ChemStation

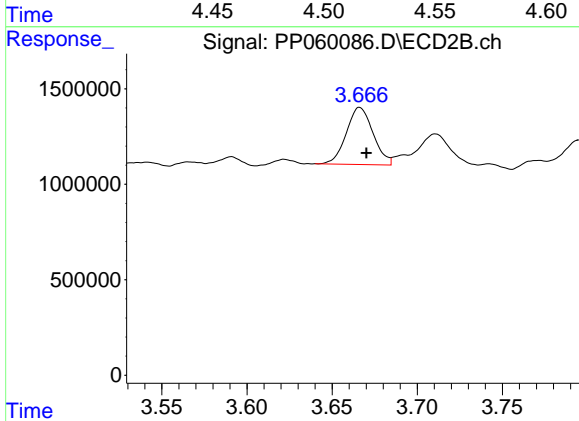
Volume Inj. : 2 µl  
 Signal #1 Phase : ZB-MR1 Signal #2 Phase: ZB-MR2  
 Signal #1 Info : 30Mx0.32mmx 0.50µ Signal #2 Info : 30M x 0.32mm x 0.25µm



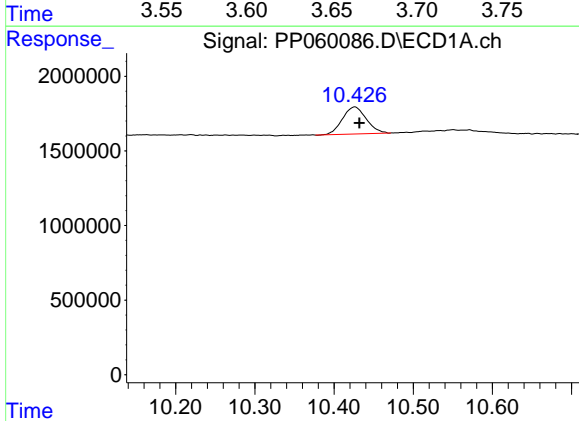


#1 Tetrachloro-m-xylene  
 R.T.: 4.508 min  
 Delta R.T.: -0.002 min  
 Response: 3791404  
 Conc: 1.82 ng/ml

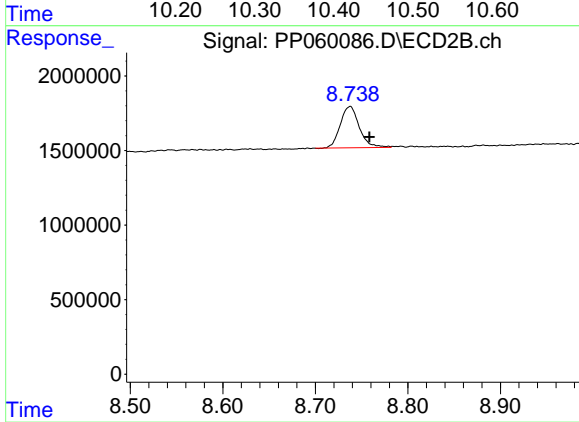
Instrument :  
 ECD\_P  
 ClientSampleId :



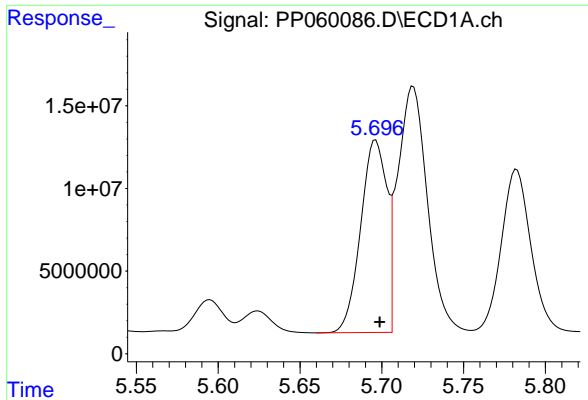
#1 Tetrachloro-m-xylene  
 R.T.: 3.666 min  
 Delta R.T.: -0.004 min  
 Response: 3267808  
 Conc: 2.01 ng/ml



#2 Decachlorobiphenyl  
 R.T.: 10.426 min  
 Delta R.T.: -0.006 min  
 Response: 3774449  
 Conc: 2.47 ng/ml



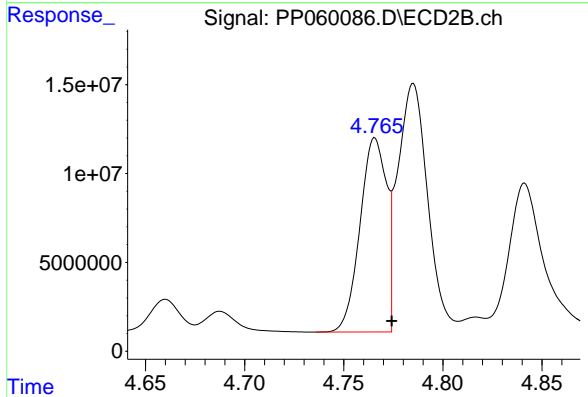
#2 Decachlorobiphenyl  
 R.T.: 8.738 min  
 Delta R.T.: -0.021 min  
 Response: 3947986  
 Conc: 2.61 ng/ml



#3 AR-1016-1

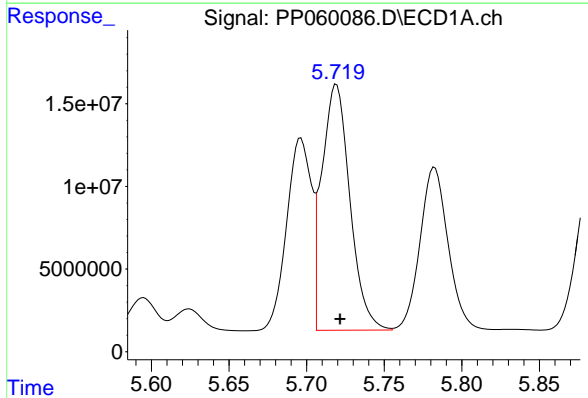
R.T.: 5.696 min  
 Delta R.T.: -0.002 min  
 Response: 129316354  
 Conc: 1916.51 ng/ml

Instrument :  
 ECD\_P  
 ClientSampleId :



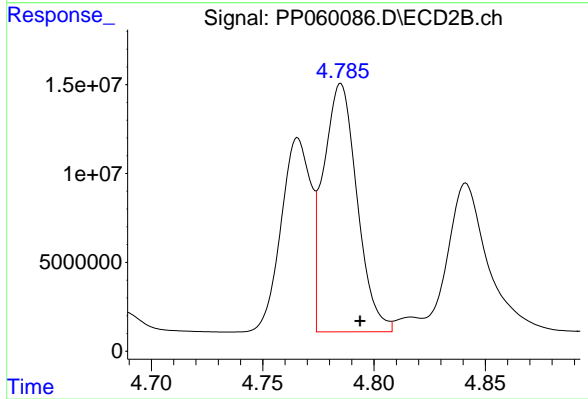
#3 AR-1016-1

R.T.: 4.766 min  
 Delta R.T.: -0.008 min  
 Response: 101766740  
 Conc: 1692.85 ng/ml



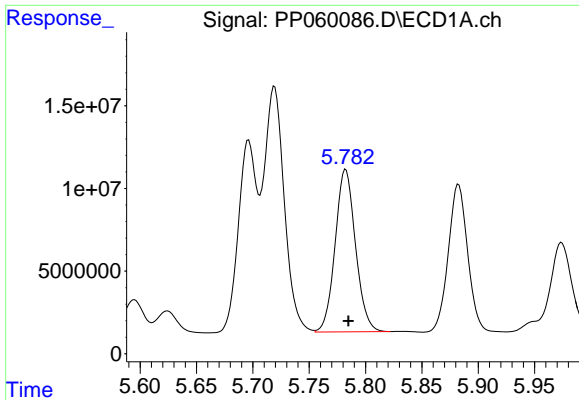
#4 AR-1016-2

R.T.: 5.719 min  
 Delta R.T.: -0.002 min  
 Response: 187159788  
 Conc: 1956.49 ng/ml



#4 AR-1016-2

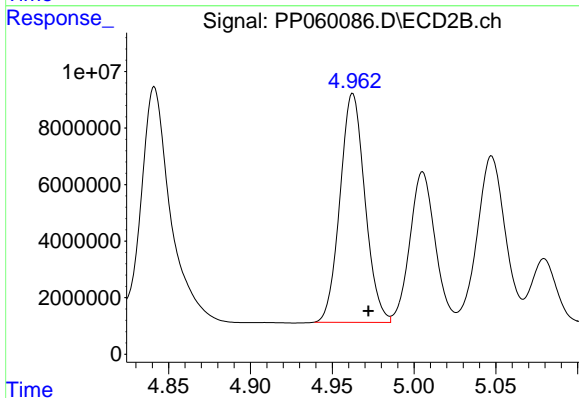
R.T.: 4.785 min  
 Delta R.T.: -0.009 min  
 Response: 147124093  
 Conc: 1772.54 ng/ml



#5 AR-1016-3

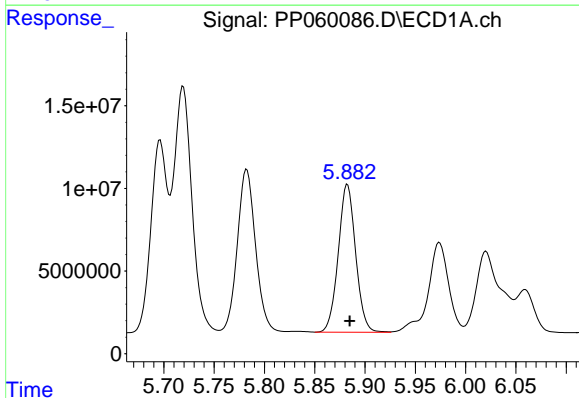
R.T.: 5.782 min  
 Delta R.T.: -0.003 min  
 Response: 123514069  
 Conc: 2075.07 ng/ml

Instrument :  
 ECD\_P  
 ClientSampleId :



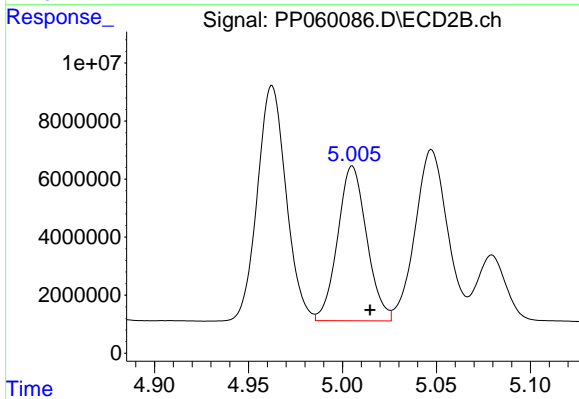
#5 AR-1016-3

R.T.: 4.963 min  
 Delta R.T.: -0.010 min  
 Response: 85869449  
 Conc: 1914.21 ng/ml



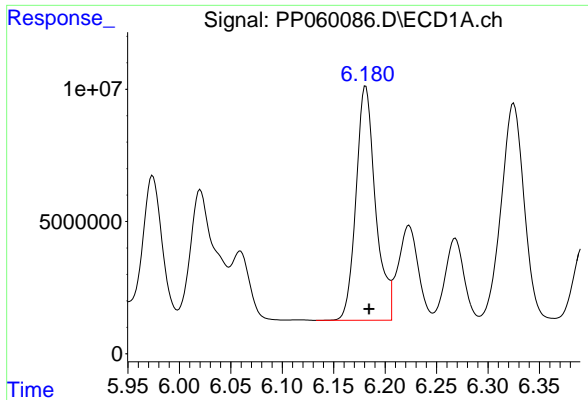
#6 AR-1016-4

R.T.: 5.883 min  
 Delta R.T.: -0.002 min  
 Response: 107588427  
 Conc: 2197.20 ng/ml



#6 AR-1016-4

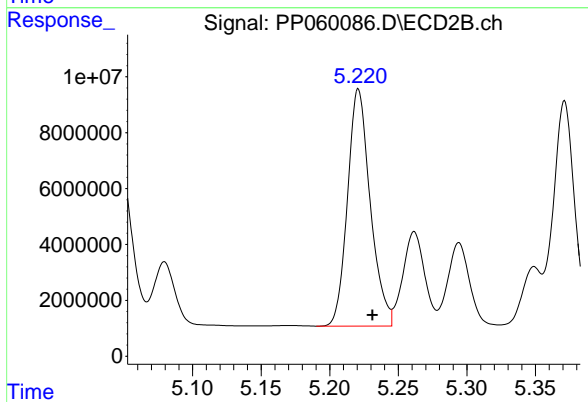
R.T.: 5.005 min  
 Delta R.T.: -0.009 min  
 Response: 57403412  
 Conc: 1627.13 ng/ml



#7 AR-1016-5

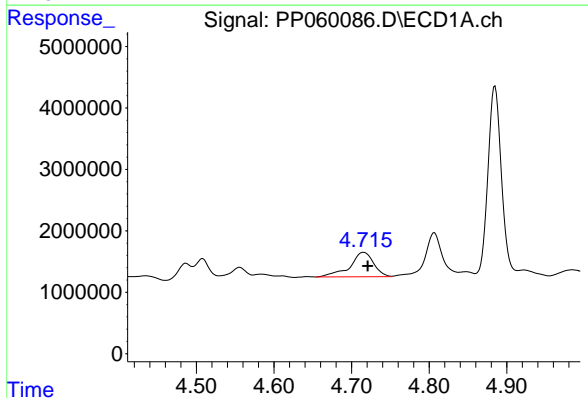
R.T.: 6.181 min  
 Delta R.T.: -0.003 min  
 Response: 116630923  
 Conc: 2372.10 ng/ml

Instrument :  
 ECD\_P  
 ClientSampleId :



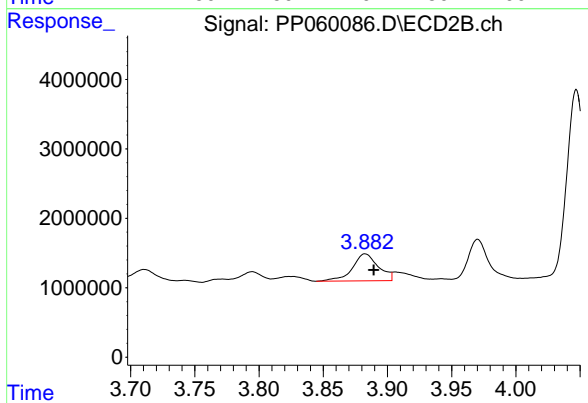
#7 AR-1016-5

R.T.: 5.221 min  
 Delta R.T.: -0.010 min  
 Response: 98010758  
 Conc: 2107.92 ng/ml



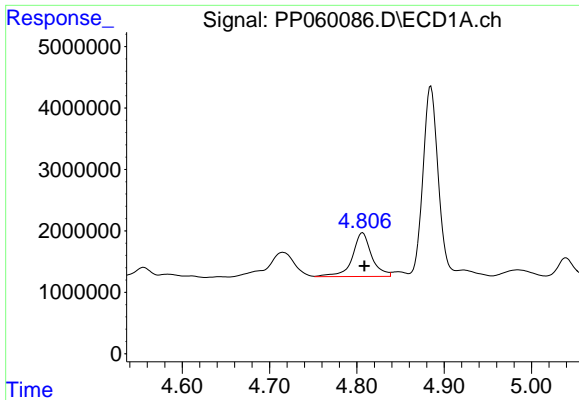
#8 AR-1221-1

R.T.: 4.715 min  
 Delta R.T.: -0.005 min  
 Response: 8428523  
 Conc: 317.06 ng/ml



#8 AR-1221-1

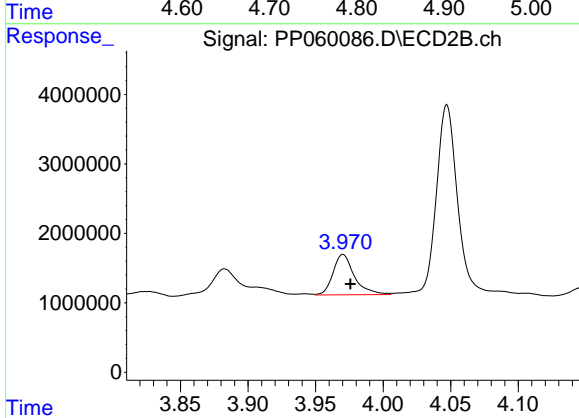
R.T.: 3.883 min  
 Delta R.T.: -0.007 min  
 Response: 5441624  
 Conc: 247.74 ng/ml



#9 AR-1221-2

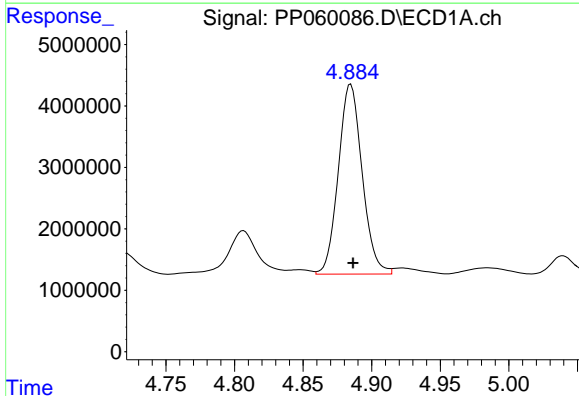
R.T.: 4.807 min  
Delta R.T.: -0.002 min  
Response: 10877074  
Conc: 552.61 ng/ml

Instrument :  
ECD\_P  
ClientSampleId :



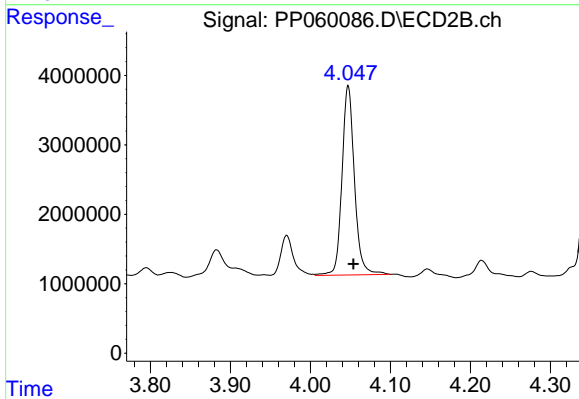
#9 AR-1221-2

R.T.: 3.970 min  
Delta R.T.: -0.005 min  
Response: 6406083  
Conc: 414.93 ng/ml



#10 AR-1221-3

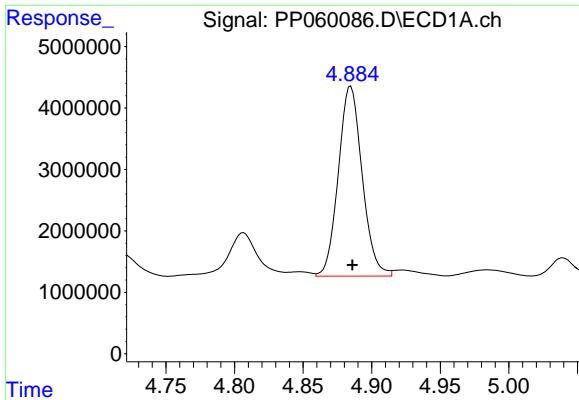
R.T.: 4.885 min  
Delta R.T.: -0.002 min  
Response: 37417463  
Conc: 655.08 ng/ml



#10 AR-1221-3

R.T.: 4.047 min  
Delta R.T.: -0.007 min  
Response: 29512109  
Conc: 629.21 ng/ml

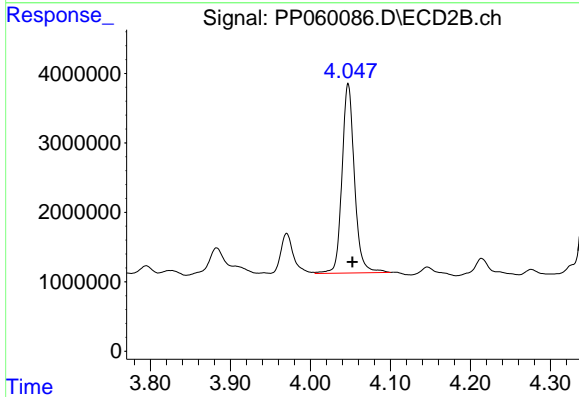




#11 AR-1232-1

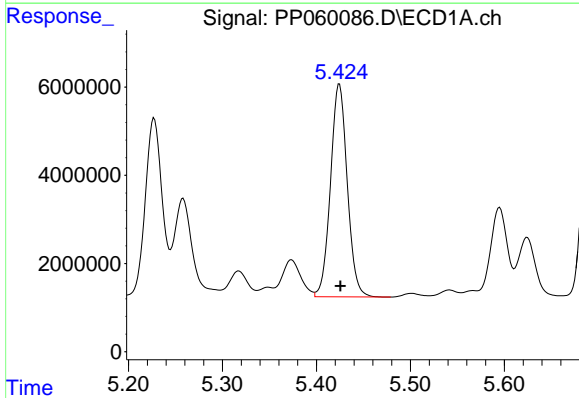
R.T.: 4.885 min  
 Delta R.T.: -0.001 min  
 Response: 37417463  
 Conc: 802.01 ng/ml

Instrument :  
 ECD\_P  
 ClientSampleId :



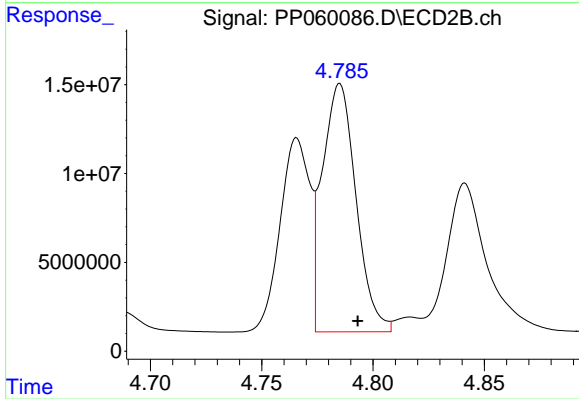
#11 AR-1232-1

R.T.: 4.047 min  
 Delta R.T.: -0.006 min  
 Response: 29512109  
 Conc: 776.36 ng/ml



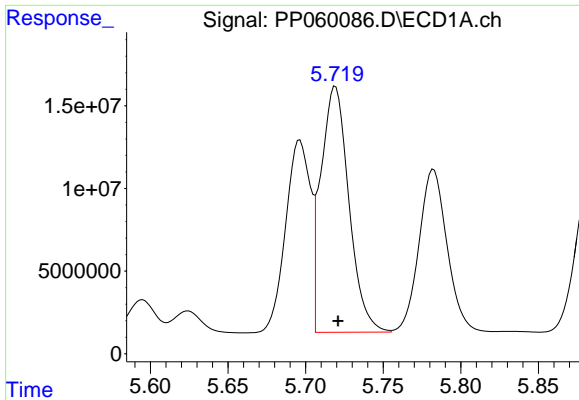
#12 AR-1232-2

R.T.: 5.424 min  
 Delta R.T.: -0.001 min  
 Response: 59914306  
 Conc: 2358.95 ng/ml



#12 AR-1232-2

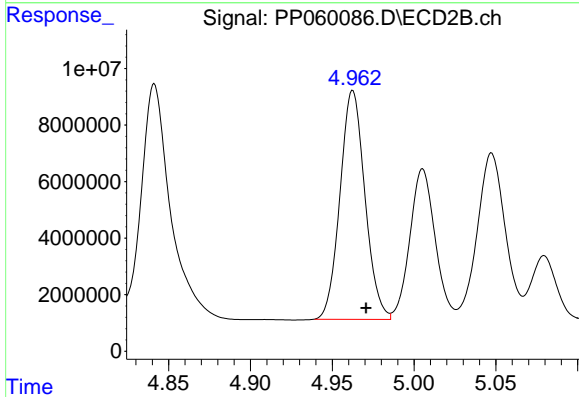
R.T.: 4.785 min  
 Delta R.T.: -0.008 min  
 Response: 147124093  
 Conc: 3990.01 ng/ml



#13 AR-1232-3

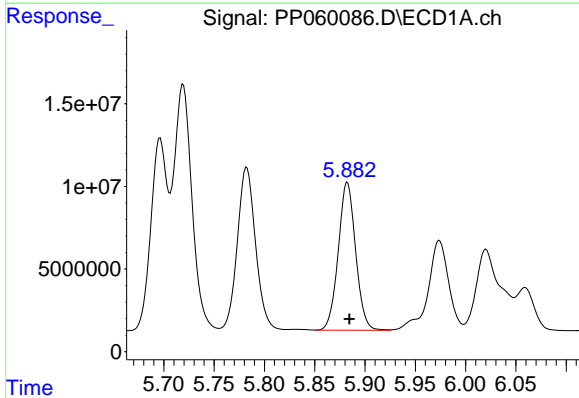
R.T.: 5.719 min  
 Delta R.T.: -0.002 min  
 Response: 187159788  
 Conc: 4332.07 ng/ml

Instrument :  
 ECD\_P  
 ClientSampleId :



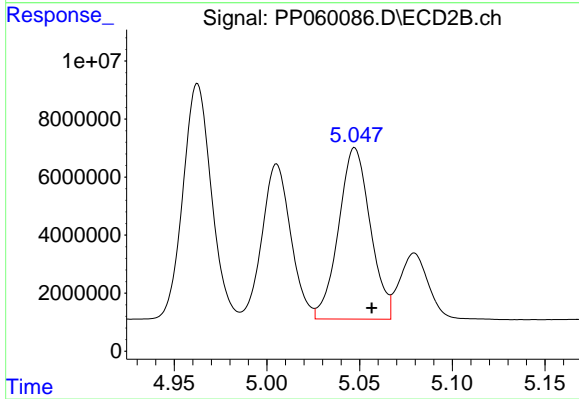
#13 AR-1232-3

R.T.: 4.963 min  
 Delta R.T.: -0.008 min  
 Response: 85869449  
 Conc: 4288.43 ng/ml



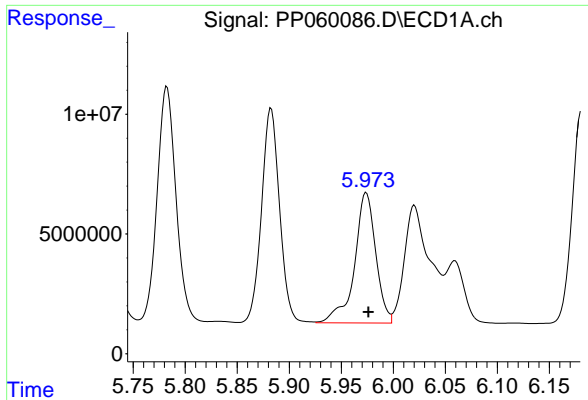
#14 AR-1232-4

R.T.: 5.883 min  
 Delta R.T.: -0.002 min  
 Response: 107588427  
 Conc: 4867.62 ng/ml



#14 AR-1232-4

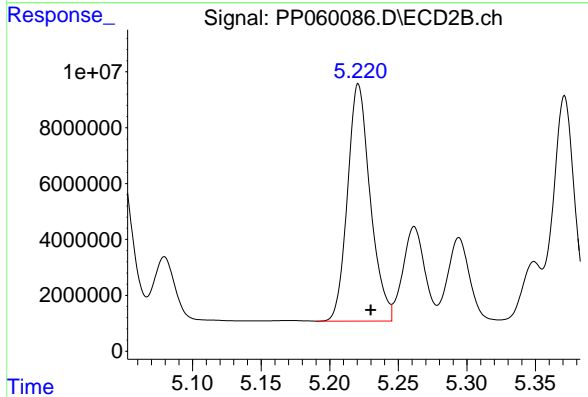
R.T.: 5.047 min  
 Delta R.T.: -0.009 min  
 Response: 70294743  
 Conc: 3848.28 ng/ml



#15 AR-1232-5

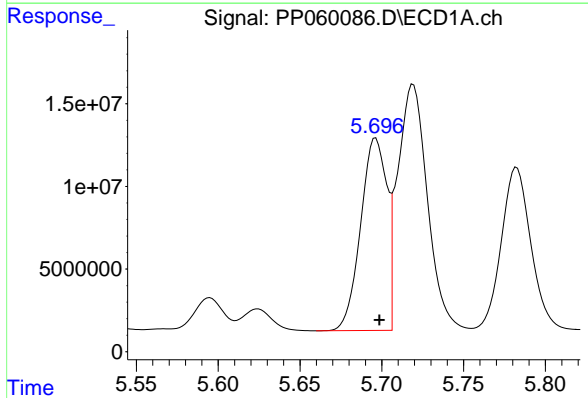
R.T.: 5.974 min  
 Delta R.T.: -0.002 min  
 Response: 77250978  
 Conc: 4210.93 ng/ml

Instrument :  
 ECD\_P  
 ClientSampleId :



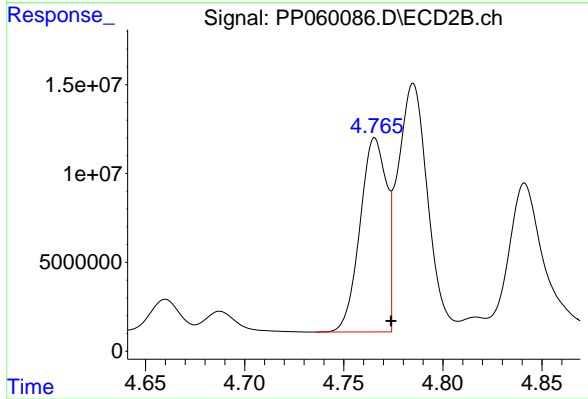
#15 AR-1232-5

R.T.: 5.221 min  
 Delta R.T.: -0.009 min  
 Response: 98010758  
 Conc: 4888.49 ng/ml



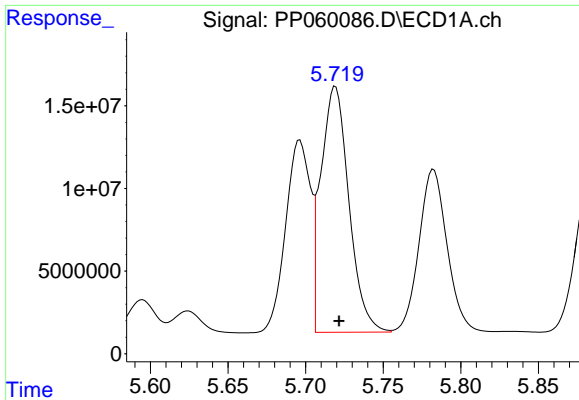
#16 AR-1242-1

R.T.: 5.696 min  
 Delta R.T.: -0.002 min  
 Response: 129316354  
 Conc: 2165.17 ng/ml



#16 AR-1242-1

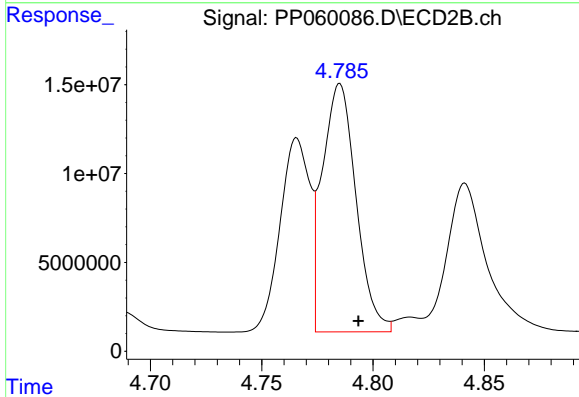
R.T.: 4.766 min  
 Delta R.T.: -0.008 min  
 Response: 101766740  
 Conc: 1932.49 ng/ml



#17 AR-1242-2

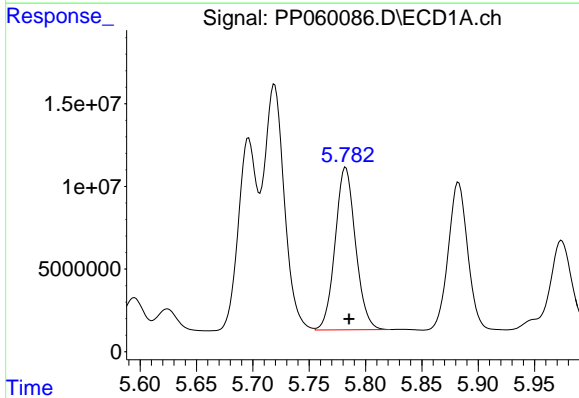
R.T.: 5.719 min  
Delta R.T.: -0.002 min  
Response: 187159788  
Conc: 2227.11 ng/ml

Instrument :  
ECD\_P  
ClientSampleId :



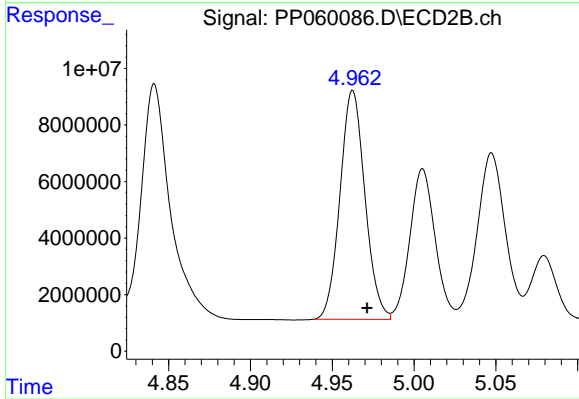
#17 AR-1242-2

R.T.: 4.785 min  
Delta R.T.: -0.008 min  
Response: 147124093  
Conc: 2041.79 ng/ml



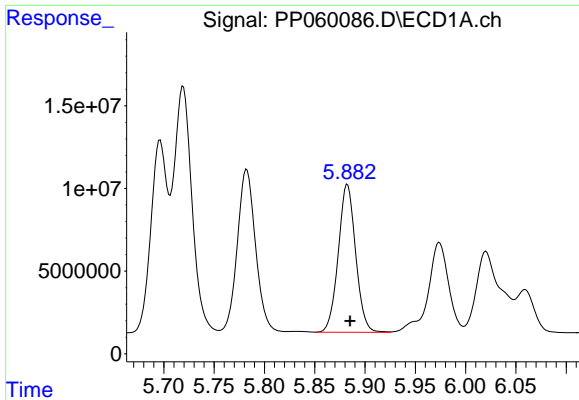
#18 AR-1242-3

R.T.: 5.782 min  
Delta R.T.: -0.003 min  
Response: 123514069  
Conc: 2361.58 ng/ml



#18 AR-1242-3

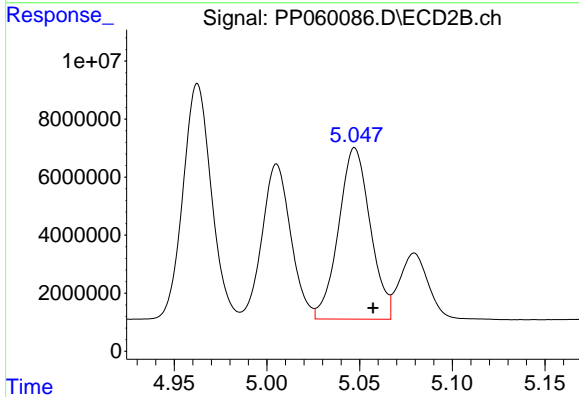
R.T.: 4.963 min  
Delta R.T.: -0.009 min  
Response: 85869449  
Conc: 2194.26 ng/ml



#19 AR-1242-4

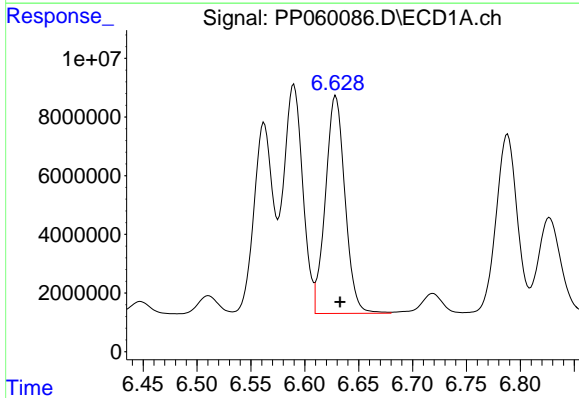
R.T.: 5.883 min  
 Delta R.T.: -0.003 min  
 Response: 107588427  
 Conc: 2496.71 ng/ml

Instrument :  
 ECD\_P  
 ClientSampleId :



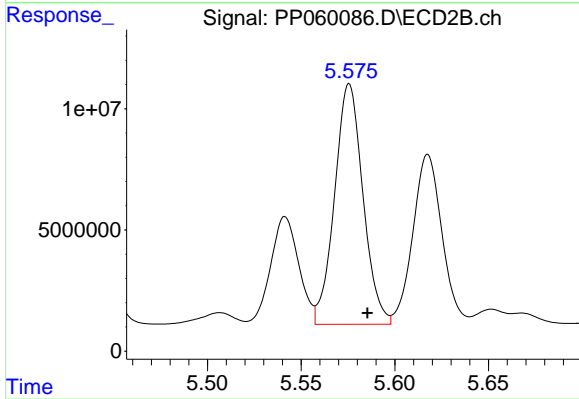
#19 AR-1242-4

R.T.: 5.047 min  
 Delta R.T.: -0.010 min  
 Response: 70294743  
 Conc: 1793.72 ng/ml



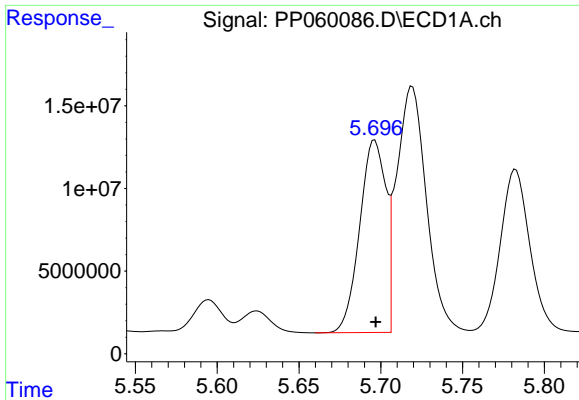
#20 AR-1242-5

R.T.: 6.629 min  
 Delta R.T.: -0.004 min  
 Response: 93883529  
 Conc: 2053.47 ng/ml



#20 AR-1242-5

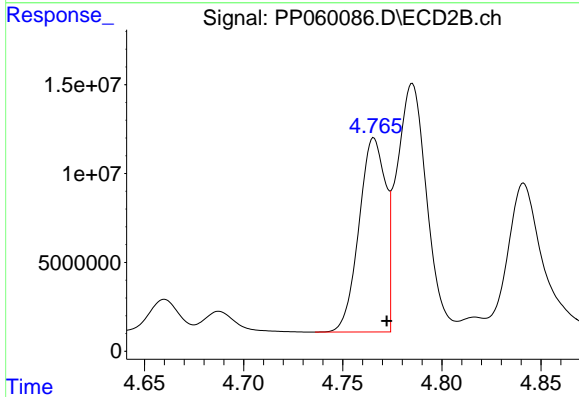
R.T.: 5.576 min  
 Delta R.T.: -0.010 min  
 Response: 104623631  
 Conc: 2162.54 ng/ml



#21 AR-1248-1

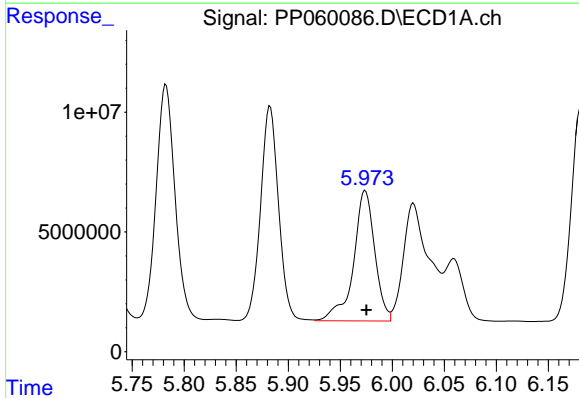
R.T.: 5.696 min  
 Delta R.T.: 0.000 min  
 Response: 129316354  
 Conc: 2893.20 ng/ml

Instrument :  
 ECD\_P  
 ClientSampleId :



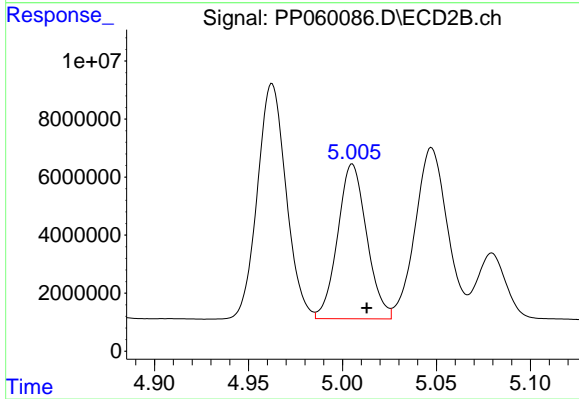
#21 AR-1248-1

R.T.: 4.766 min  
 Delta R.T.: -0.006 min  
 Response: 101766740  
 Conc: 2604.55 ng/ml



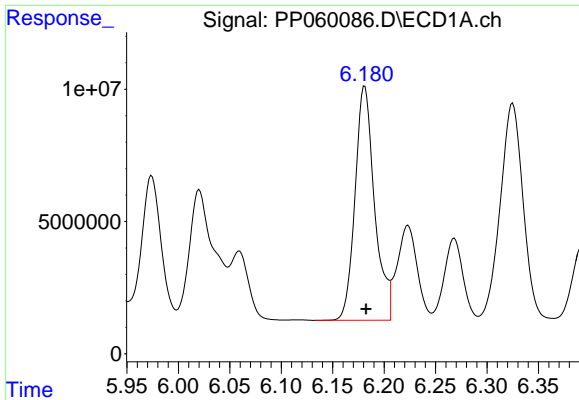
#22 AR-1248-2

R.T.: 5.974 min  
 Delta R.T.: -0.001 min  
 Response: 77250978  
 Conc: 1192.81 ng/ml



#22 AR-1248-2

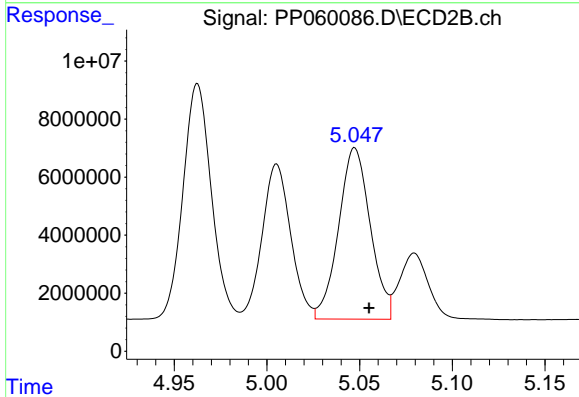
R.T.: 5.005 min  
 Delta R.T.: -0.008 min  
 Response: 57403412  
 Conc: 1059.42 ng/ml



#23 AR-1248-3

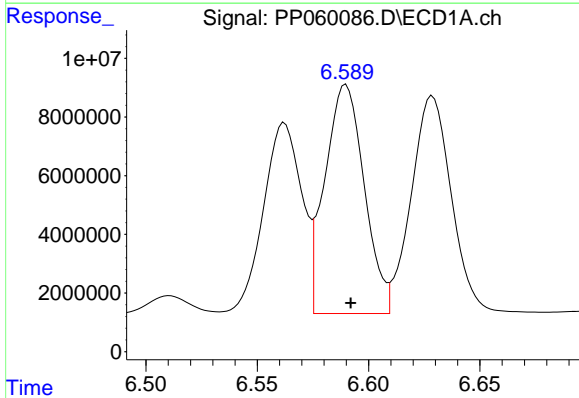
R.T.: 6.181 min  
 Delta R.T.: -0.001 min  
 Response: 116630923  
 Conc: 1646.81 ng/ml

Instrument :  
 ECD\_P  
 ClientSampleId :



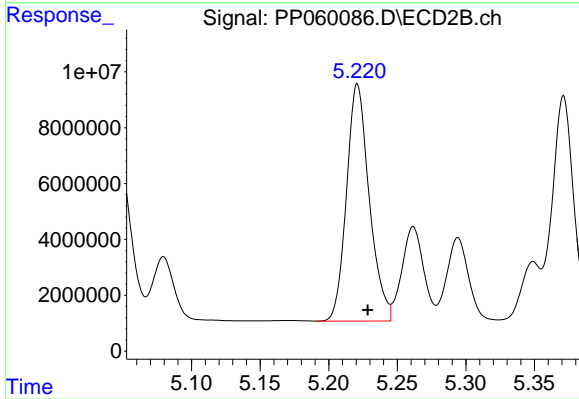
#23 AR-1248-3

R.T.: 5.047 min  
 Delta R.T.: -0.008 min  
 Response: 70294743  
 Conc: 1235.42 ng/ml



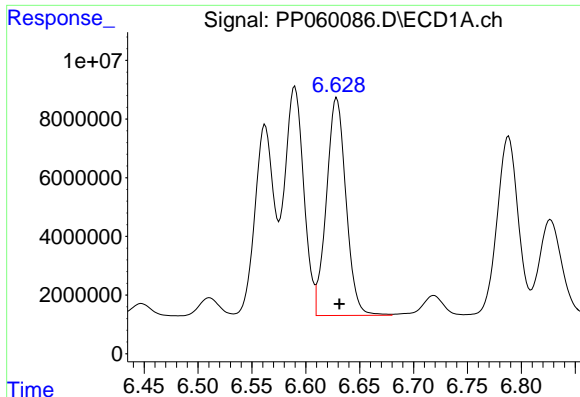
#24 AR-1248-4

R.T.: 6.590 min  
 Delta R.T.: -0.002 min  
 Response: 96181173  
 Conc: 1243.55 ng/ml



#24 AR-1248-4

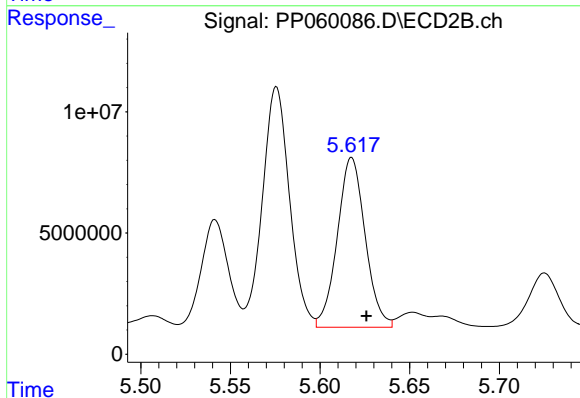
R.T.: 5.221 min  
 Delta R.T.: -0.007 min  
 Response: 98010758  
 Conc: 1459.29 ng/ml



#25 AR-1248-5

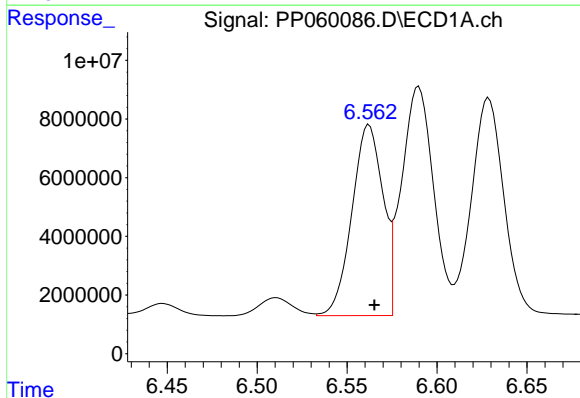
R.T.: 6.629 min  
 Delta R.T.: -0.002 min  
 Response: 93883529  
 Conc: 1247.78 ng/ml

Instrument :  
 ECD\_P  
 ClientSampleId :



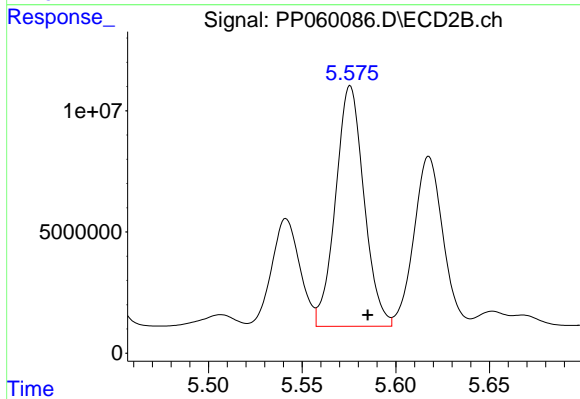
#25 AR-1248-5

R.T.: 5.618 min  
 Delta R.T.: -0.008 min  
 Response: 75717692  
 Conc: 1147.87 ng/ml



#26 AR-1254-1

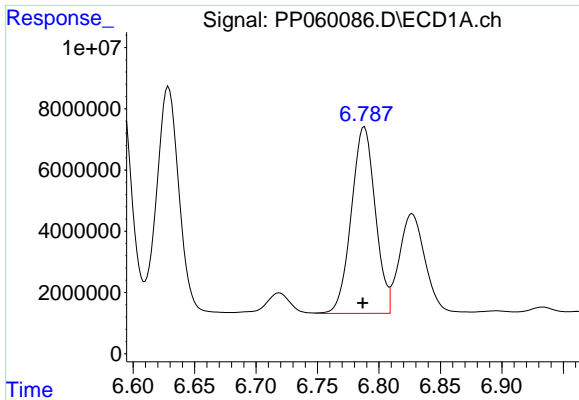
R.T.: 6.562 min  
 Delta R.T.: -0.003 min  
 Response: 78025369  
 Conc: 977.32 ng/ml



#26 AR-1254-1

R.T.: 5.576 min  
 Delta R.T.: -0.009 min  
 Response: 104623631  
 Conc: 1042.52 ng/ml

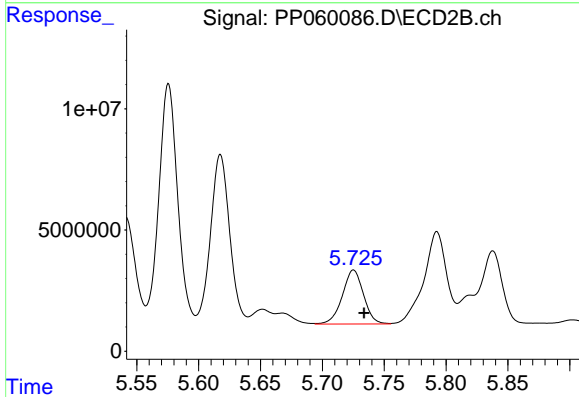




#27 AR-1254-2

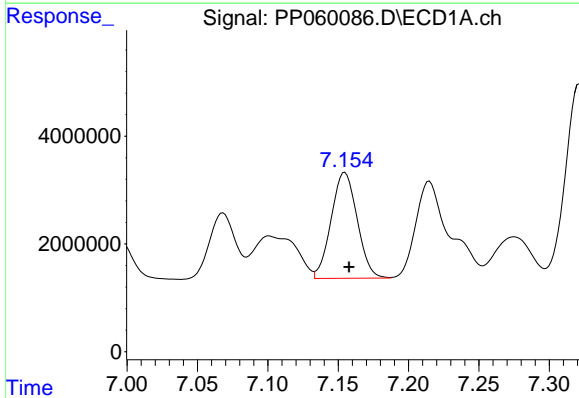
R.T.: 6.788 min  
 Delta R.T.: 0.001 min  
 Response: 82602720  
 Conc: 689.66 ng/ml

Instrument :  
 ECD\_P  
 ClientSampleId :



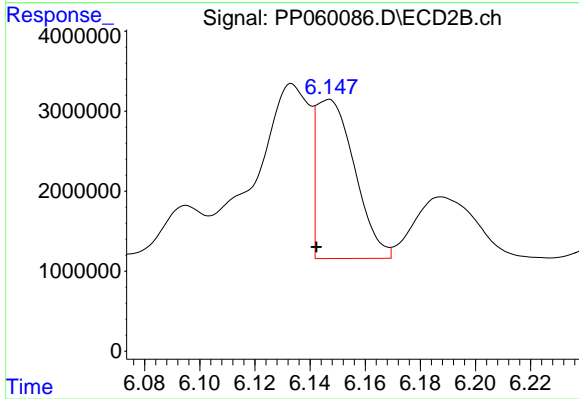
#27 AR-1254-2

R.T.: 5.725 min  
 Delta R.T.: -0.008 min  
 Response: 26571225  
 Conc: 305.85 ng/ml



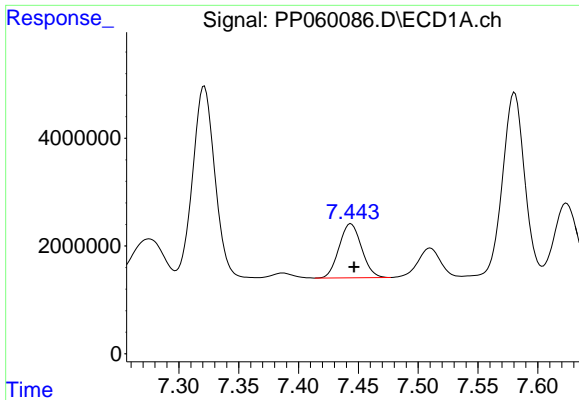
#28 AR-1254-3

R.T.: 7.155 min  
 Delta R.T.: -0.003 min  
 Response: 25345355  
 Conc: 208.64 ng/ml



#28 AR-1254-3

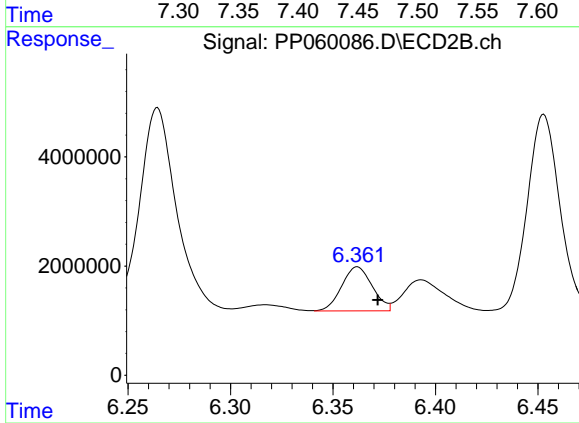
R.T.: 6.147 min  
 Delta R.T.: 0.004 min  
 Response: 19290070  
 Conc: 137.39 ng/ml



#29 AR-1254-4

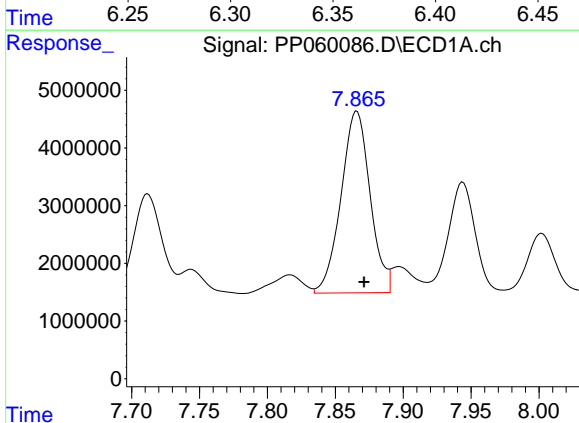
R.T.: 7.444 min  
 Delta R.T.: -0.003 min  
 Response: 13139817  
 Conc: 147.75 ng/ml

Instrument :  
 ECD\_P  
 ClientSampleId :



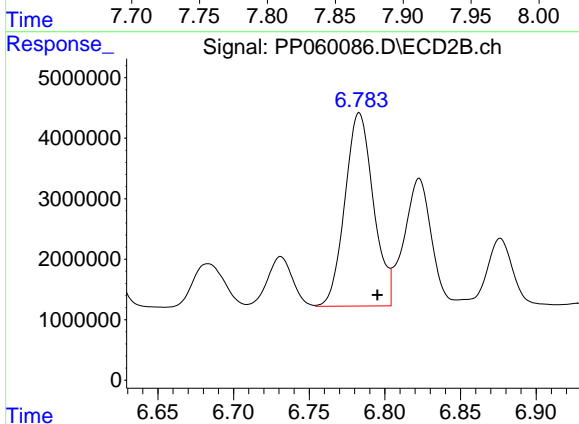
#29 AR-1254-4

R.T.: 6.362 min  
 Delta R.T.: -0.010 min  
 Response: 8369715  
 Conc: 99.43 ng/ml



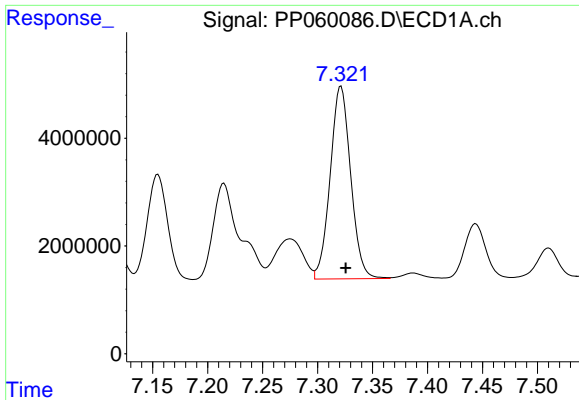
#30 AR-1254-5

R.T.: 7.866 min  
 Delta R.T.: -0.005 min  
 Response: 46922820  
 Conc: 482.37 ng/ml



#30 AR-1254-5

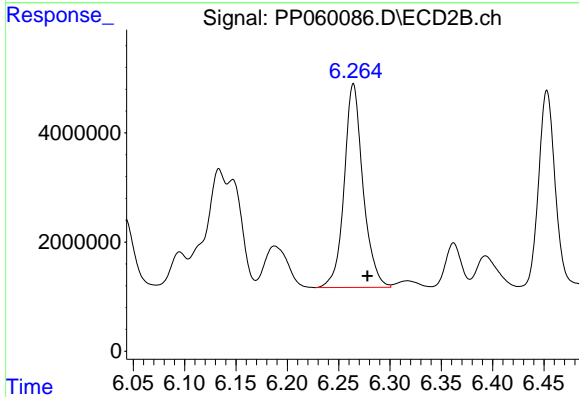
R.T.: 6.783 min  
 Delta R.T.: -0.012 min  
 Response: 41896489  
 Conc: 353.21 ng/ml



#31 AR-1260-1

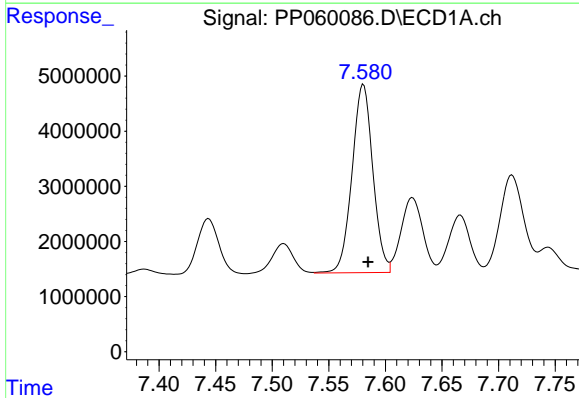
R.T.: 7.321 min  
 Delta R.T.: -0.004 min  
 Response: 46508751  
 Conc: 515.97 ng/ml

Instrument :  
 ECD\_P  
 ClientSampleId :



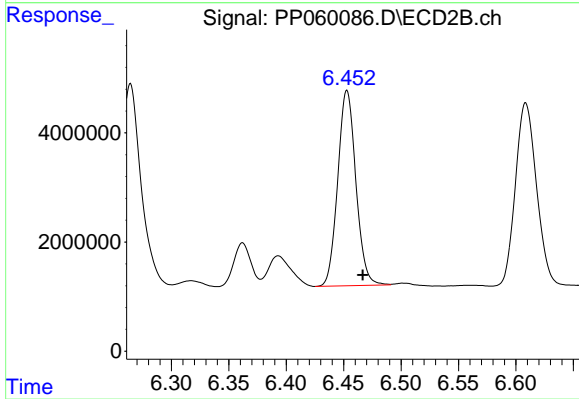
#31 AR-1260-1

R.T.: 6.264 min  
 Delta R.T.: -0.013 min  
 Response: 47595888  
 Conc: 511.14 ng/ml



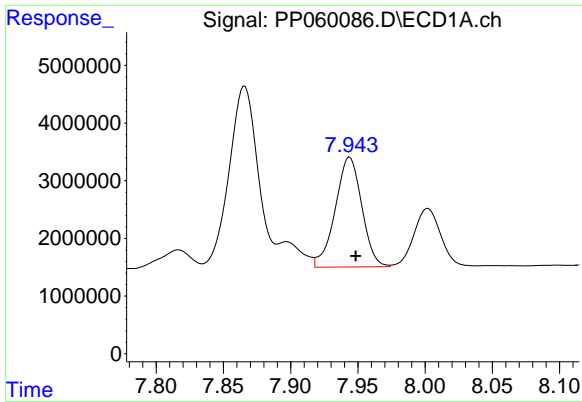
#32 AR-1260-2

R.T.: 7.581 min  
 Delta R.T.: -0.004 min  
 Response: 43673652  
 Conc: 425.72 ng/ml



#32 AR-1260-2

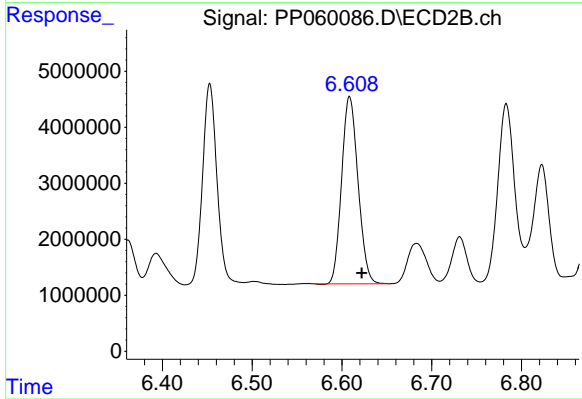
R.T.: 6.453 min  
 Delta R.T.: -0.014 min  
 Response: 39436045  
 Conc: 359.70 ng/ml



#33 AR-1260-3

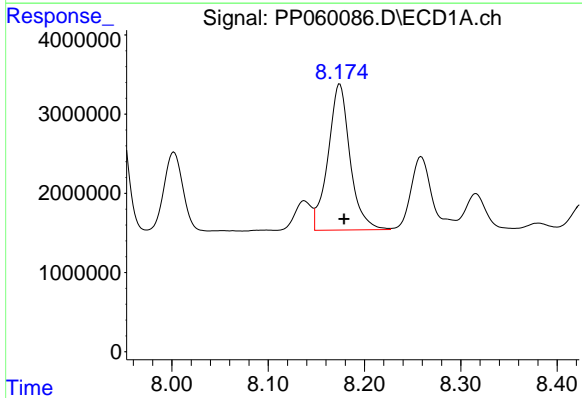
R.T.: 7.944 min  
 Delta R.T.: -0.004 min  
 Response: 26065326  
 Conc: 330.95 ng/ml

Instrument :  
 ECD\_P  
 ClientSampleId :



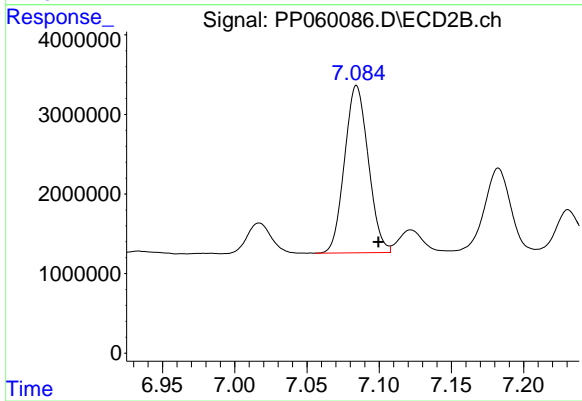
#33 AR-1260-3

R.T.: 6.609 min  
 Delta R.T.: -0.014 min  
 Response: 42397752  
 Conc: 412.21 ng/ml



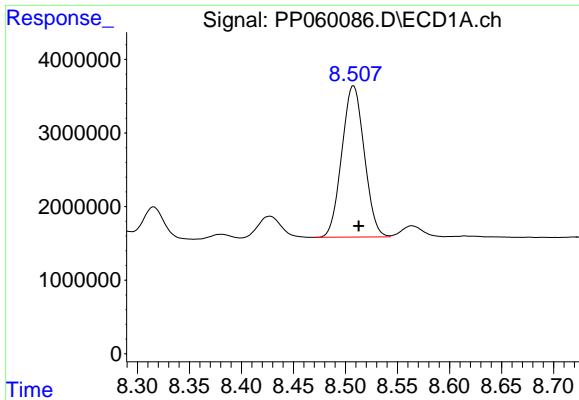
#34 AR-1260-4

R.T.: 8.174 min  
 Delta R.T.: -0.004 min  
 Response: 29268931  
 Conc: 326.59 ng/ml



#34 AR-1260-4

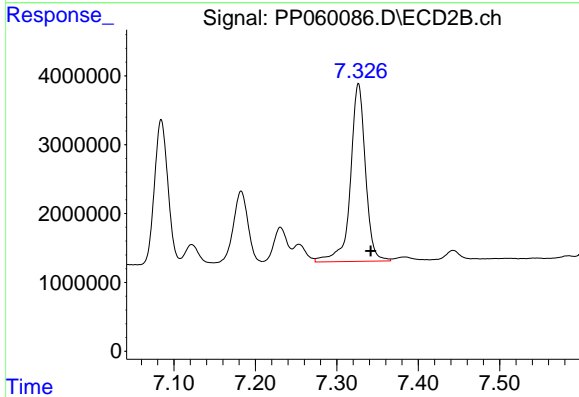
R.T.: 7.084 min  
 Delta R.T.: -0.015 min  
 Response: 24045625  
 Conc: 288.72 ng/ml



#35 AR-1260-5

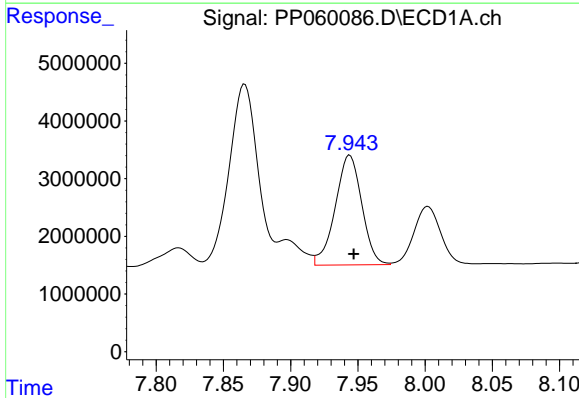
R.T.: 8.508 min  
 Delta R.T.: -0.005 min  
 Response: 30860303  
 Conc: 180.83 ng/ml

Instrument :  
 ECD\_P  
 ClientSampleId :



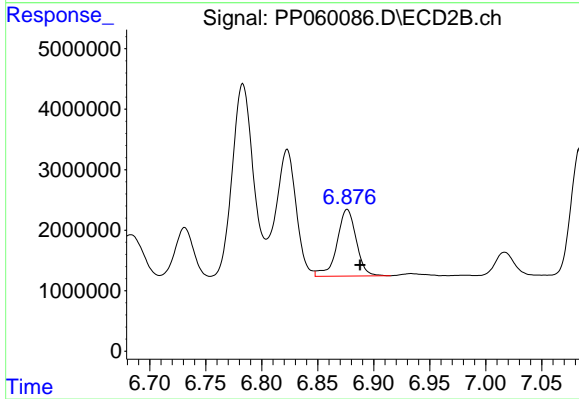
#35 AR-1260-5

R.T.: 7.327 min  
 Delta R.T.: -0.015 min  
 Response: 33028703  
 Conc: 171.66 ng/ml



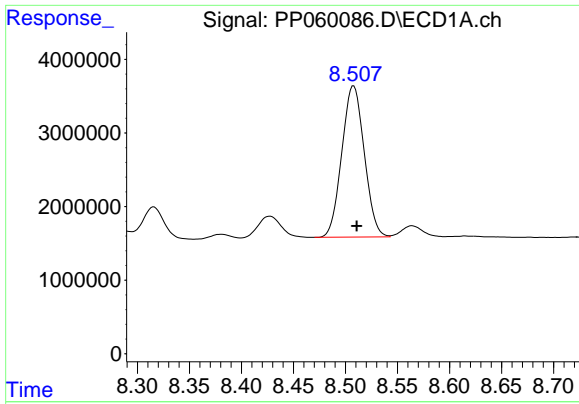
#36 AR-1262-1

R.T.: 7.944 min  
 Delta R.T.: -0.003 min  
 Response: 26065326  
 Conc: 225.22 ng/ml



#36 AR-1262-1

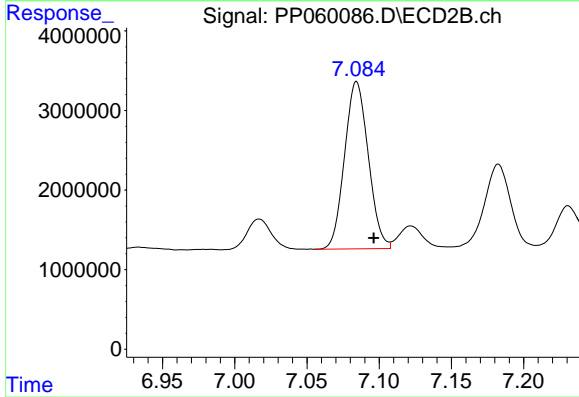
R.T.: 6.876 min  
 Delta R.T.: -0.011 min  
 Response: 13249533  
 Conc: 262.50 ng/ml



#37 AR-1262-2

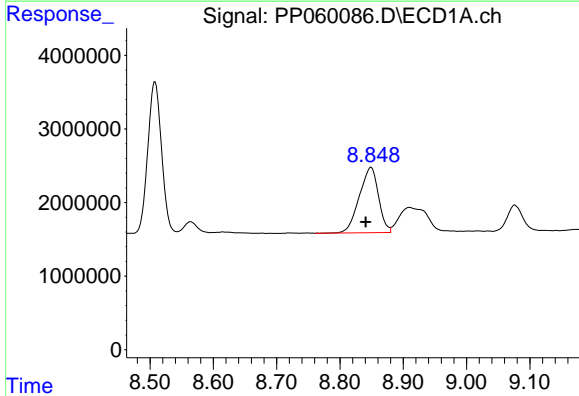
R.T.: 8.508 min  
 Delta R.T.: -0.003 min  
 Response: 30860303  
 Conc: 154.15 ng/ml

Instrument :  
 ECD\_P  
 ClientSampleId :



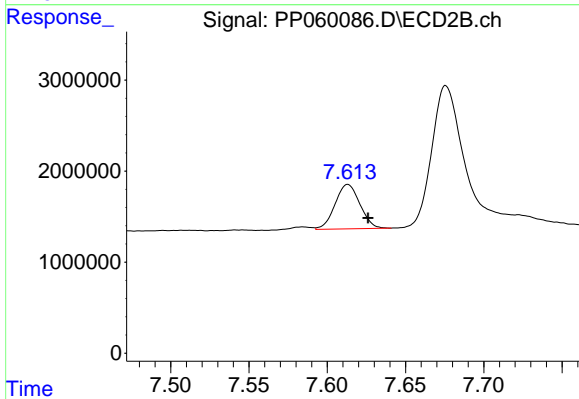
#37 AR-1262-2

R.T.: 7.084 min  
 Delta R.T.: -0.012 min  
 Response: 24045625  
 Conc: 212.84 ng/ml



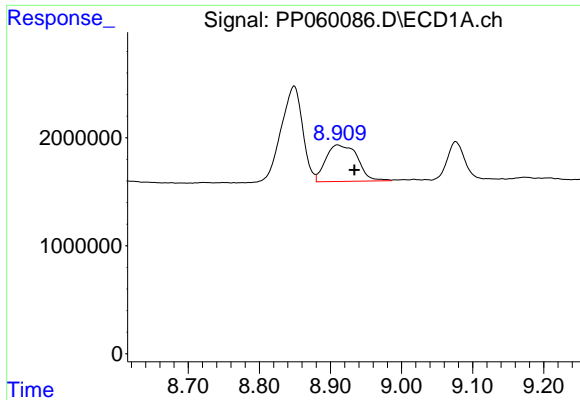
#38 AR-1262-3

R.T.: 8.849 min  
 Delta R.T.: 0.009 min  
 Response: 18748705  
 Conc: 130.20 ng/ml



#38 AR-1262-3

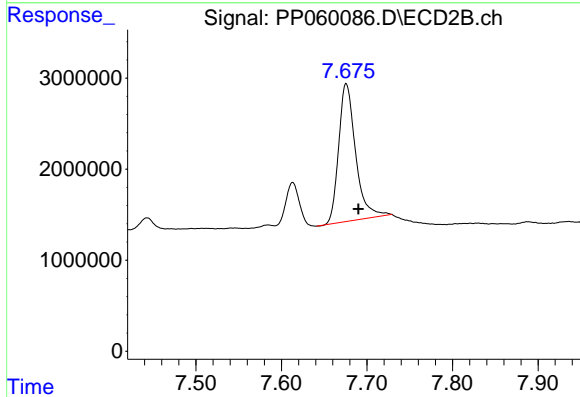
R.T.: 7.613 min  
 Delta R.T.: -0.013 min  
 Response: 5394264  
 Conc: 61.54 ng/ml



#39 AR-1262-4

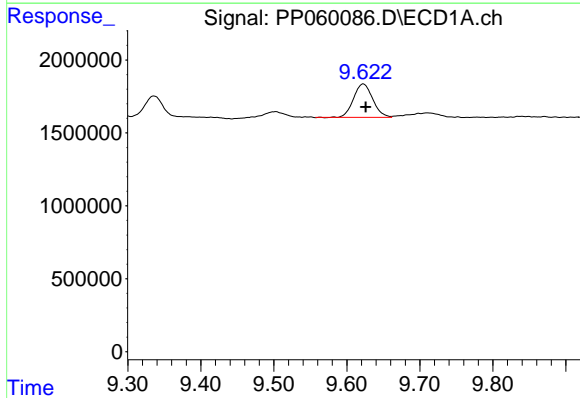
R.T.: 8.910 min  
 Delta R.T.: -0.024 min  
 Response: 10490329  
 Conc: 92.38 ng/ml

Instrument :  
 ECD\_P  
 ClientSampleId :



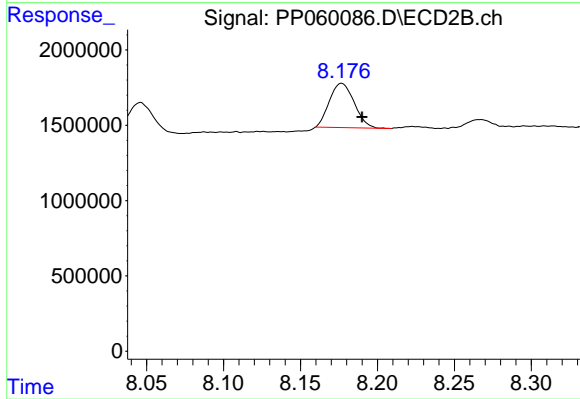
#39 AR-1262-4

R.T.: 7.676 min  
 Delta R.T.: -0.014 min  
 Response: 20827240  
 Conc: 127.53 ng/ml



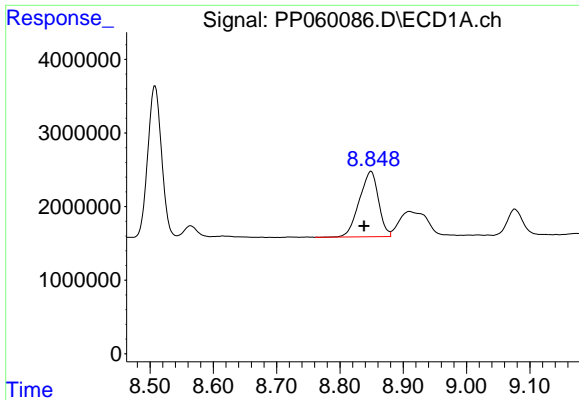
#40 AR-1262-5

R.T.: 9.623 min  
 Delta R.T.: -0.003 min  
 Response: 4196087  
 Conc: 56.25 ng/ml



#40 AR-1262-5

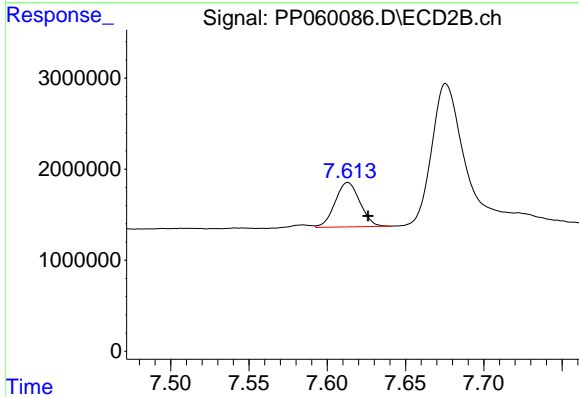
R.T.: 8.177 min  
 Delta R.T.: -0.013 min  
 Response: 3295672  
 Conc: 44.15 ng/ml



#41 AR-1268-1

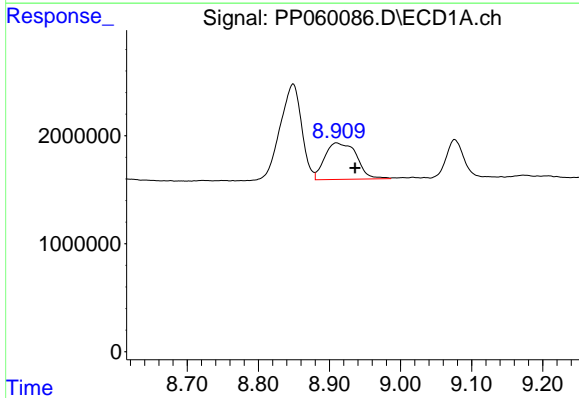
R.T.: 8.849 min  
 Delta R.T.: 0.011 min  
 Response: 18748705  
 Conc: 74.77 ng/ml

Instrument :  
 ECD\_P  
 ClientSampleId :



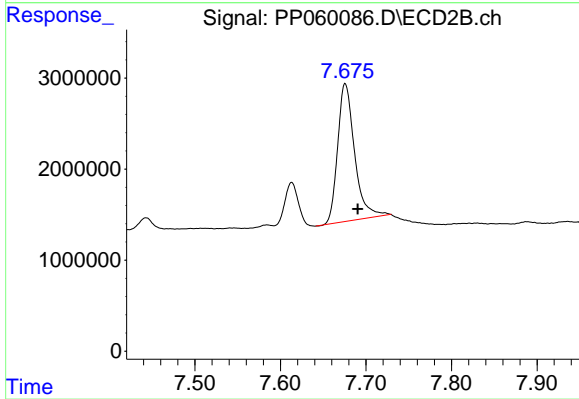
#41 AR-1268-1

R.T.: 7.613 min  
 Delta R.T.: -0.013 min  
 Response: 5394264  
 Conc: 20.72 ng/ml



#42 AR-1268-2

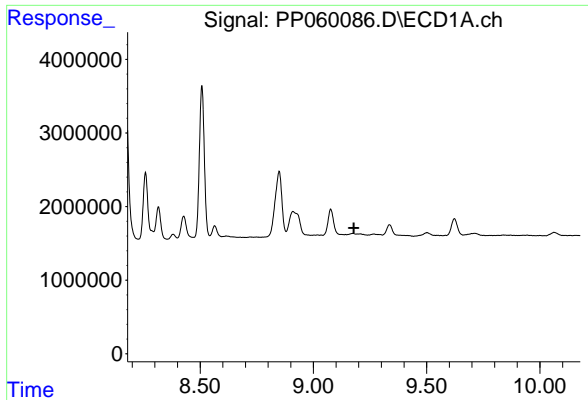
R.T.: 8.910 min  
 Delta R.T.: -0.026 min  
 Response: 10490329  
 Conc: 45.71 ng/ml



#42 AR-1268-2

R.T.: 7.676 min  
 Delta R.T.: -0.014 min  
 Response: 20827240  
 Conc: 90.09 ng/ml



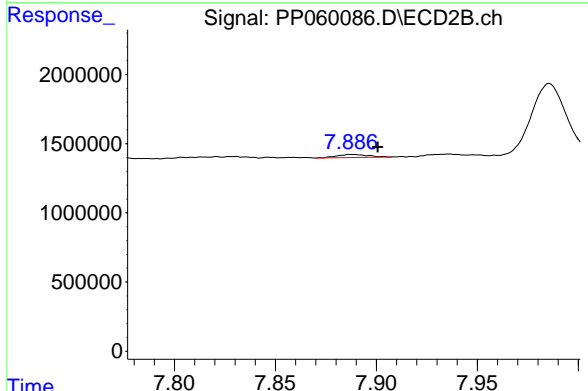


#43 AR-1268-3

R.T.: 0.000 min  
 Exp R.T.: 9.178 min  
 Response: 0  
 Conc: N.D.

Instrument :  
 ECD\_P  
 ClientSampleId :

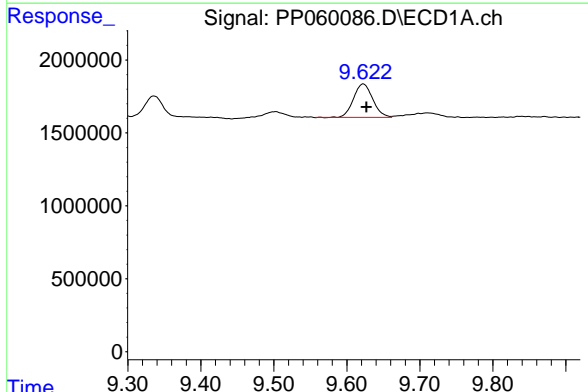
Time



#43 AR-1268-3

R.T.: 7.888 min  
 Delta R.T.: -0.013 min  
 Response: 237096  
 Conc: 1.16 ng/ml

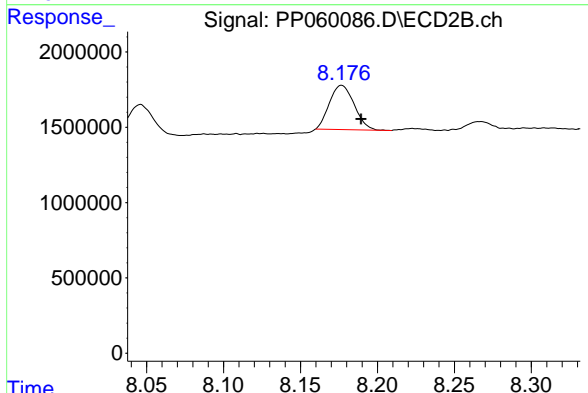
Time



#44 AR-1268-4

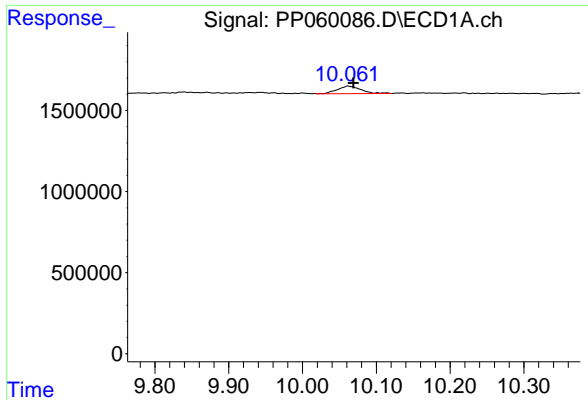
R.T.: 9.623 min  
 Delta R.T.: -0.004 min  
 Response: 4196087  
 Conc: 50.66 ng/ml

Time



#44 AR-1268-4

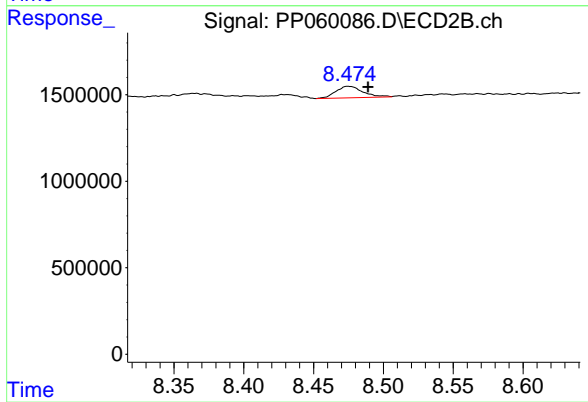
R.T.: 8.177 min  
 Delta R.T.: -0.012 min  
 Response: 3295672  
 Conc: 40.82 ng/ml



#45 AR-1268-5

R.T.: 10.062 min  
 Delta R.T.: -0.006 min  
 Response: 1032272  
 Conc: 1.71 ng/ml

Instrument :  
 ECD\_P  
 ClientSampleId :



#45 AR-1268-5

R.T.: 8.475 min  
 Delta R.T.: -0.014 min  
 Response: 892544  
 Conc: 1.41 ng/ml