

Data Path : Z:\pestpcbsrv\HPCHEM1\ECD_P\Data\PP092421\
 Data File : PP039515.D
 Signal(s) : Signal #1: ECD1A.CH Signal #2: ECD2B.CH
 Acq On : 24 Sep 2021 16:18
 Operator : AJ\MA
 Sample : AR1262ICC500
 Misc :
 ALS Vial : 25 Sample Multiplier: 1

Instrument :
 ECD_P
 ClientSampleId :
 AR1262ICC500

Integration File signal 1: autoint1.e
 Integration File signal 2: autoint2.e
 Quant Time: Sep 24 17:39:04 2021
 Quant Method : Z:\pestpcbsrv\HPCHEM1\ECD_P\methods\PP092421.M
 Quant Title : GC EXTRACTABLES
 QLast Update : Fri Sep 24 17:38:37 2021
 Response via : Initial Calibration
 Integrator: ChemStation 6890 Scale Mode: Small noise peaks clipped

Volume Inj. : 2 µl
 Signal #1 Phase : ZB-MR1 Signal #2 Phase: ZB-MR2
 Signal #1 Info : 30Mx0.32mmx 0.50µ Signal #2 Info : 30M x 0.32mm x 0.25µm

Compound	RT#1	RT#2	Resp#1	Resp#2	ng/ml	ng/ml

System Monitoring Compounds						
1) SA Tetrachlo...	4.906	3.996	1485679	806493	50.000	50.000
2) SA Decachlor...	10.931	9.336	1021771	1040361	50.000	50.000
Target Compounds						
36) L8 AR-1262-1	8.552	7.394	667639	352493	500.000	500.000
37) L8 AR-1262-2	9.107	7.948	1099779	1135869	500.000	500.000
38) L8 AR-1262-3	9.417	8.238	488095	508193	500.000	500.000
39) L8 AR-1262-4	9.511	8.302	299075	898096	500.000	500.000
40) L8 AR-1262-5	10.180	8.801	389272	455227	500.000	500.000

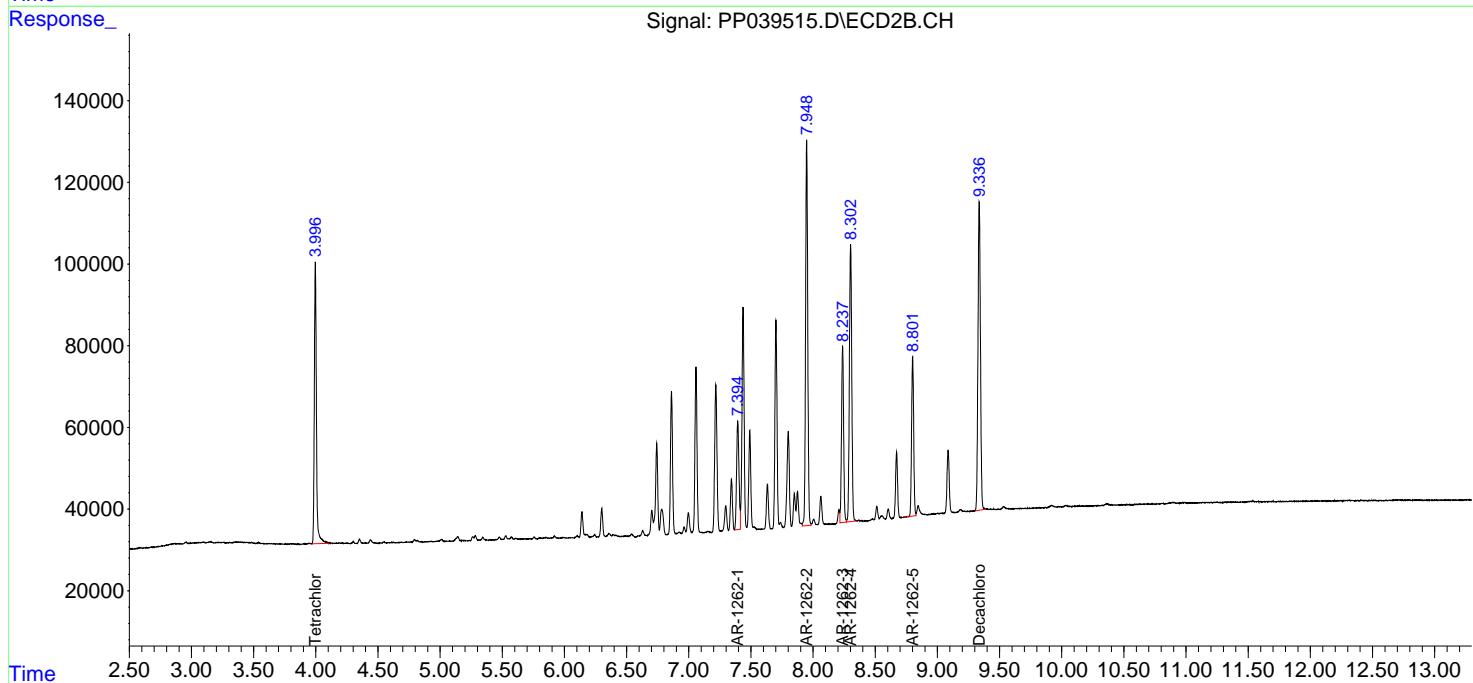
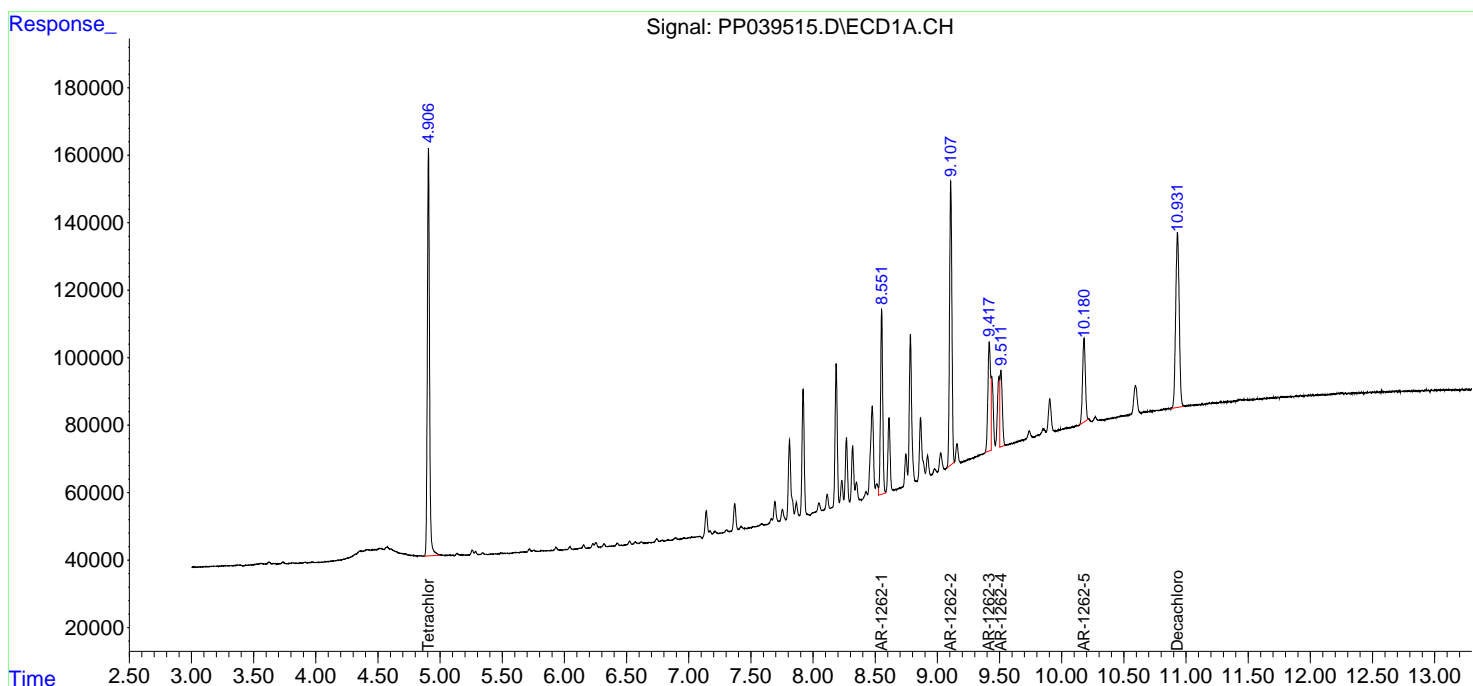
(f)=RT Delta > 1/2 Window (#)=Amounts differ by > 25% (m)=manual int.

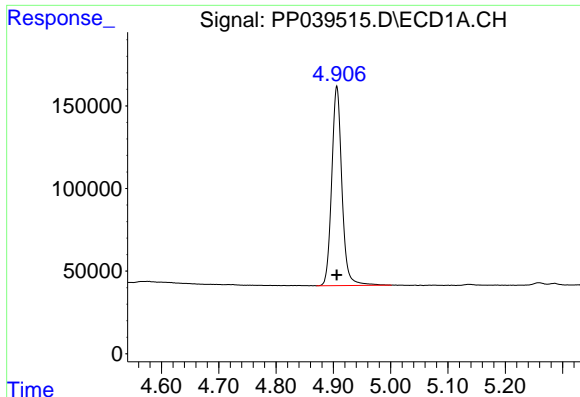
Data Path : Z:\pestpcbsrv\HPCHEM1\ECD_P\Data\PP092421\
 Data File : PP039515.D
 Signal(s) : Signal #1: ECD1A.CH Signal #2: ECD2B.CH
 Acq On : 24 Sep 2021 16:18
 Operator : AJ\MA
 Sample : AR1262ICC500
 Misc :
 ALS Vial : 25 Sample Multiplier: 1

Instrument :
 ECD_P
 ClientSampled :
 AR1262ICC500

Integration File signal 1: autoint1.e
 Integration File signal 2: autoint2.e
 Quant Time: Sep 24 17:39:04 2021
 Quant Method : Z:\pestpcbsrv\HPCHEM1\ECD_P\methods\PP092421.M
 Quant Title : GC EXTRACTABLES
 QLast Update : Fri Sep 24 17:38:37 2021
 Response via : Initial Calibration
 Integrator: ChemStation 6890 Scale Mode: Small noise peaks clipped

Volume Inj. : 2 µl
 Signal #1 Phase : ZB-MR1 Signal #2 Phase: ZB-MR2
 Signal #1 Info : 30Mx0.32mmx 0.50µ Signal #2 Info : 30M x 0.32mm x 0.25µm

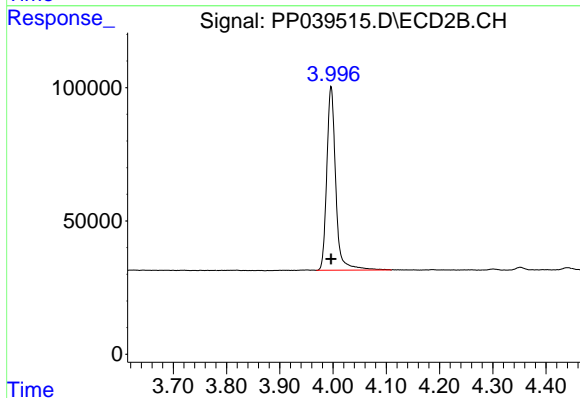




#1 Tetrachloro-m-xylene

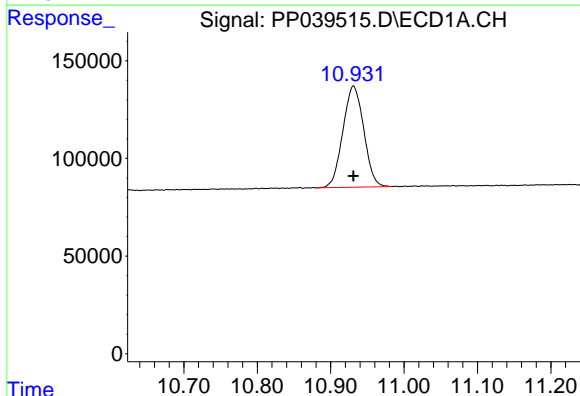
R.T.: 4.906 min
 Delta R.T.: 0.000 min
 Response: 1485679
 Conc: 50.00 ng/ml

Instrument :
 ECD_P
 ClientSampleId :
 AR1262ICC500



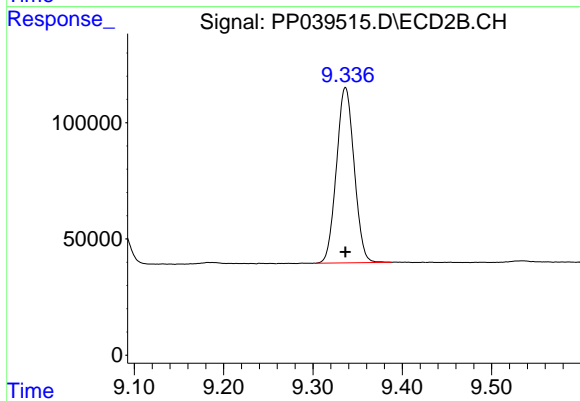
#1 Tetrachloro-m-xylene

R.T.: 3.996 min
 Delta R.T.: 0.000 min
 Response: 806493
 Conc: 50.00 ng/ml



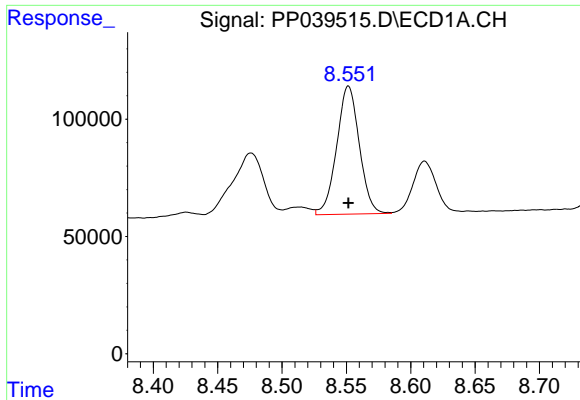
#2 Decachlorobiphenyl

R.T.: 10.931 min
 Delta R.T.: 0.000 min
 Response: 1021771
 Conc: 50.00 ng/ml



#2 Decachlorobiphenyl

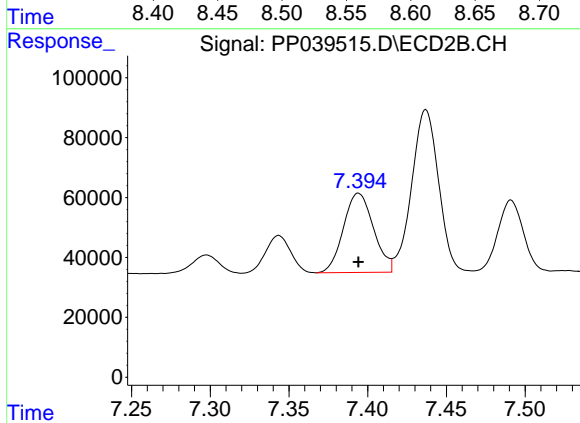
R.T.: 9.336 min
 Delta R.T.: 0.000 min
 Response: 1040361
 Conc: 50.00 ng/ml



#36 AR-1262-1

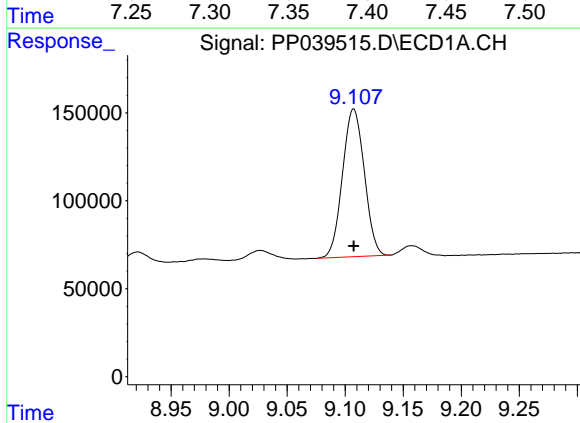
R.T.: 8.552 min
 Delta R.T.: 0.000 min
 Response: 667639
 Conc: 500.00 ng/ml

Instrument :
 ECD_P
ClientSampled :
 AR1262ICC500



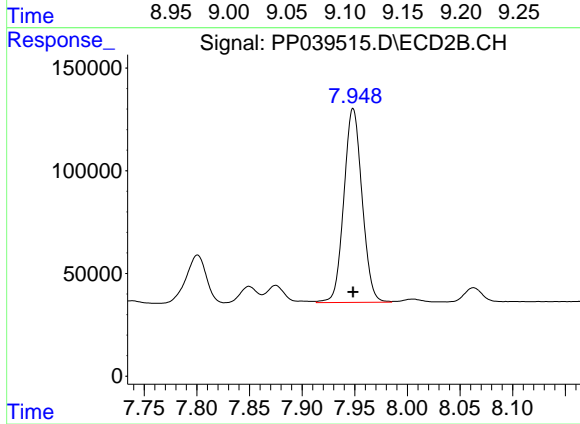
#36 AR-1262-1

R.T.: 7.394 min
 Delta R.T.: 0.000 min
 Response: 352493
 Conc: 500.00 ng/ml



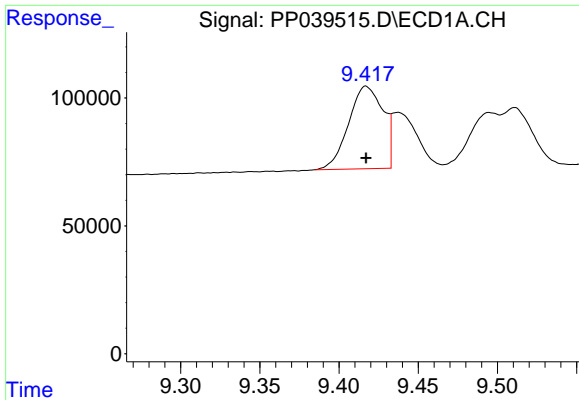
#37 AR-1262-2

R.T.: 9.107 min
 Delta R.T.: 0.000 min
 Response: 1099779
 Conc: 500.00 ng/ml



#37 AR-1262-2

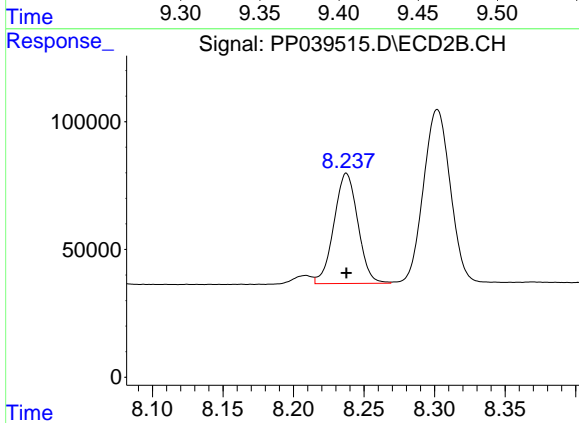
R.T.: 7.948 min
 Delta R.T.: 0.000 min
 Response: 1135869
 Conc: 500.00 ng/ml



#38 AR-1262-3

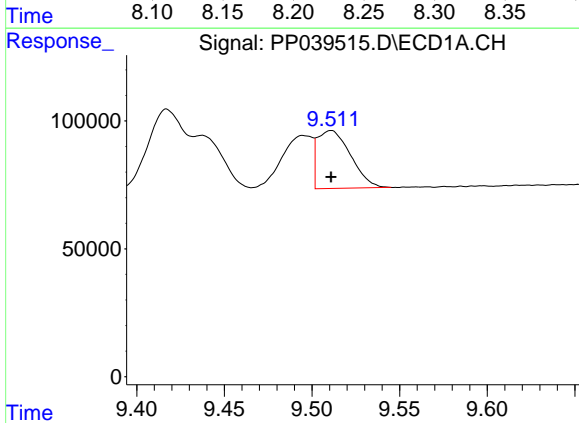
R.T.: 9.417 min
 Delta R.T.: 0.000 min
 Response: 488095
 Conc: 500.00 ng/ml

Instrument :
 ECD_P
 ClientSampleId :
 AR1262ICC500



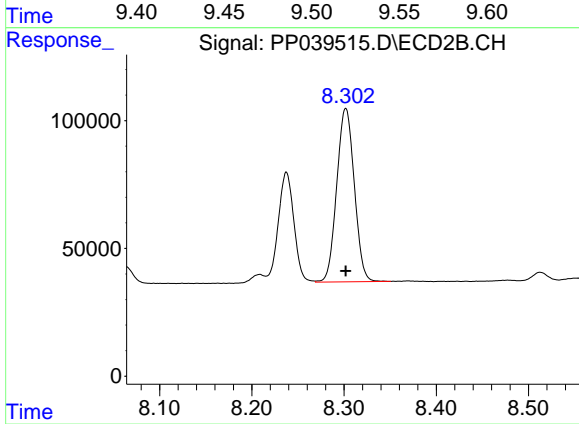
#38 AR-1262-3

R.T.: 8.238 min
 Delta R.T.: 0.000 min
 Response: 508193
 Conc: 500.00 ng/ml



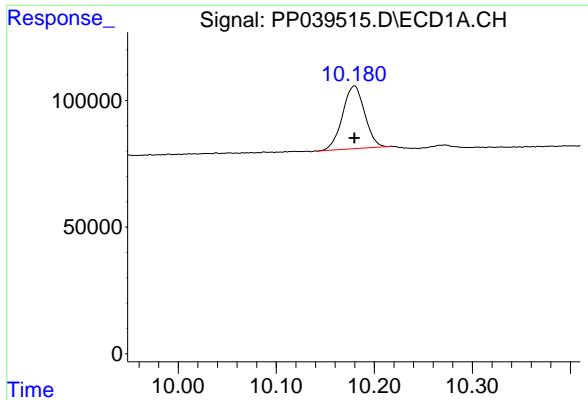
#39 AR-1262-4

R.T.: 9.511 min
 Delta R.T.: 0.000 min
 Response: 299075
 Conc: 500.00 ng/ml



#39 AR-1262-4

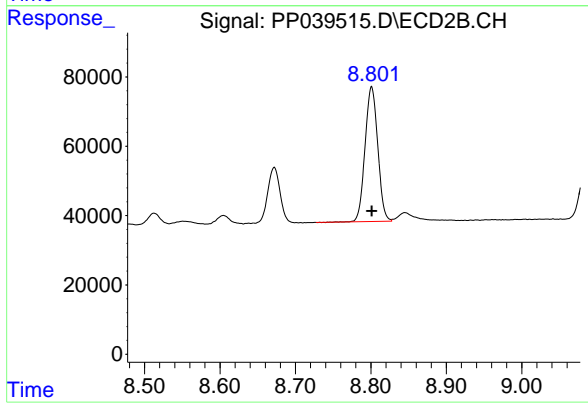
R.T.: 8.302 min
 Delta R.T.: 0.000 min
 Response: 898096
 Conc: 500.00 ng/ml



#40 AR-1262-5

R.T.: 10.180 min
Delta R.T.: 0.000 min
Response: 389272
Conc: 500.00 ng/ml

Instrument :
ECD_P
ClientSampleId :
AR1262ICC500



#40 AR-1262-5

R.T.: 8.801 min
Delta R.T.: 0.000 min
Response: 455227
Conc: 500.00 ng/ml