

Data Path : Z:\pestpcbsrv\HPCHEM1\ECD_P\Data\PP092424\
 Data File : PP067178.D
 Signal(s) : Signal #1: ECD1A.ch Signal #2: ECD2B.ch
 Acq On : 24 Sep 2024 09:58
 Operator : YP\AJ
 Sample : I.BLK
 Misc :
 ALS Vial : 2 Sample Multiplier: 1

Instrument :
 ECD_P
 ClientSampleId :

Integration File signal 1: autoint1.e
 Integration File signal 2: autoint2.e
 Quant Time: Sep 24 11:35:39 2024
 Quant Method : Z:\pestpcbsrv\HPCHEM1\ECD_P\methods\PP091224.M
 Quant Title : GC EXTRACTABLES
 QLast Update : Fri Sep 13 08:31:31 2024
 Response via : Initial Calibration
 Integrator: ChemStation

Volume Inj. : 2 µl
 Signal #1 Phase : ZB-MR2 Signal #2 Phase: ZB-MR2
 Signal #1 Info : 30Mx0.32mmx 0.50µ Signal #2 Info : 30M x 0.32mm x 0.25µm

Compound	RT#1	RT#2	Resp#1	Resp#2	ng/ml	ng/ml
----------	------	------	--------	--------	-------	-------

System Monitoring Compounds

1) SA Tetrachlo...	4.754	4.055	23607001	26984833	19.152	19.328
2) SA Decachlor...	10.662	9.230	32210337	29923487	24.734	22.565

Target Compounds

3) L1 AR-1016-1	5.846f	5.171	1323689	137302	30.300	2.925 #
4) L1 AR-1016-2	5.984f	5.171	128162	137302	1.952	2.094
5) L1 AR-1016-3	5.984	5.412f	128162	175257	2.971	4.715 #
6) L1 AR-1016-4	0.000	5.412	0	175257	N.D.	5.305 #
7) L1 AR-1016-5	0.000	5.623	0	31981	N.D.	0.796 #
9) L2 AR-1221-2	5.062	4.364	380768	424496	31.977	31.366
10) L2 AR-1221-3	5.062f	0.000	380768	0	10.368	N.D. #
11) L3 AR-1232-1	5.062f	0.000	380768	0	12.532	N.D. #
12) L3 AR-1232-2	0.000	5.171	0	137302	N.D.	4.406 #
13) L3 AR-1232-3	5.984f	5.412f	128162	175257	4.331	10.317 #
14) L3 AR-1232-4	0.000	5.438	0	53978	N.D.	3.201 #
15) L3 AR-1232-5	0.000	5.623	0	31981	N.D.	1.837 #
16) L4 AR-1242-1	5.984f	5.171	128162	137302	3.726	3.771
17) L4 AR-1242-2	5.984f	5.171	128162	137302	2.514	2.744
18) L4 AR-1242-3	5.984	5.412f	128162	175257	3.766	6.048 #
19) L4 AR-1242-4	0.000	5.438	0	53978	N.D.	1.717 #
20) L4 AR-1242-5	6.826	6.007	257113	700468	9.234	19.553 #
21) L5 AR-1248-1	5.846f	5.171	1323689	137302	48.418	4.682 #
22) L5 AR-1248-2	0.000	5.412	0	175257	N.D.	3.991 #
23) L5 AR-1248-3	0.000	5.438	0	53978	N.D.	1.175 #
24) L5 AR-1248-4	6.769	5.623	914130	31981	18.219	0.606 #
25) L5 AR-1248-5	6.826	6.040	257113	101804	5.115	2.213 #
26) L6 AR-1254-1	6.769	6.007	914130	700468	16.284	9.526 #
27) L6 AR-1254-2	6.997	6.126	840489	414105	10.164	6.203 #
28) L6 AR-1254-3	7.351	6.540	530911	596467	6.284	5.861
29) L6 AR-1254-4	7.638	6.766	570201	224652	9.877	4.317 #
30) L6 AR-1254-5	8.057	7.189	473368	275230	7.033	3.032 #
31) L7 AR-1260-1	7.526	6.674	715794	229573	9.781	2.938 #
32) L7 AR-1260-2	7.771	6.838	446700	412817	5.475	4.801
33) L7 AR-1260-3	0.000	7.015	0	245052	N.D.	2.859 #
34) L7 AR-1260-4	0.000	7.493	0	24169	N.D.	0.381 #
35) L7 AR-1260-5	8.670	7.718	86582	338659	0.737	2.548 #
36) L8 AR-1262-1	0.000	7.210	0	30494	N.D.	0.313 #
37) L8 AR-1262-2	8.670	7.493	86582	24169	0.597	0.277 #
38) L8 AR-1262-3	0.000	8.063f	0	1117691	N.D.	16.655 #
39) L8 AR-1262-4	0.000	8.063	0	1117691	N.D.	9.740 #
41) L9 AR-1268-1	0.000	8.063f	0	1117691	N.D.	6.164 #
42) L9 AR-1268-2	0.000	8.063	0	1117691	N.D.	7.036 #
43) L9 AR-1268-3	9.415	8.299	254566	312815	1.735	2.087

Data Path : Z:\pestpcbsrv\HPCHEM1\ECD_P\Data\PP092424\
 Data File : PP067178.D
 Signal(s) : Signal #1: ECD1A.ch Signal #2: ECD2B.ch
 Acq On : 24 Sep 2024 09:58
 Operator : YP\AJ
 Sample : I.BLK
 Misc :
 ALS Vial : 2 Sample Multiplier: 1

Instrument :
 ECD_P
 ClientSampleId :

Integration File signal 1: autoint1.e
 Integration File signal 2: autoint2.e
 Quant Time: Sep 24 11:35:39 2024
 Quant Method : Z:\pestpcbsrv\HPCHEM1\ECD_P\methods\PP091224.M
 Quant Title : GC EXTRACTABLES
 QLast Update : Fri Sep 13 08:31:31 2024
 Response via : Initial Calibration
 Integrator: ChemStation

Volume Inj. : 2 µl
 Signal #1 Phase : ZB-MR1 Signal #2 Phase: ZB-MR2
 Signal #1 Info : 30Mx0.32mmx 0.50µ Signal #2 Info : 30M x 0.32mm x 0.25µm

	Compound	RT#1	RT#2	Resp#1	Resp#2	ng/ml	ng/ml
45)	L9 AR-1268-5	0.000	8.936	0	243508	N.D.	0.615 #

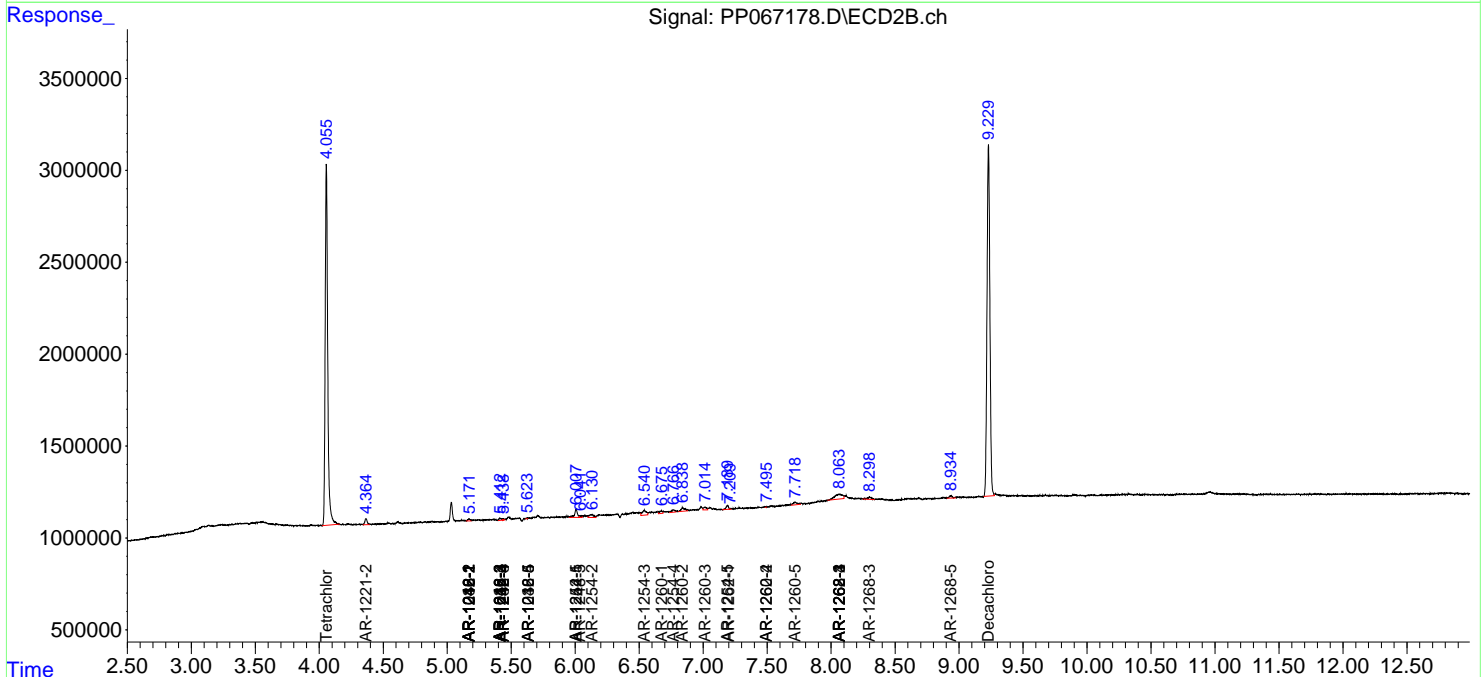
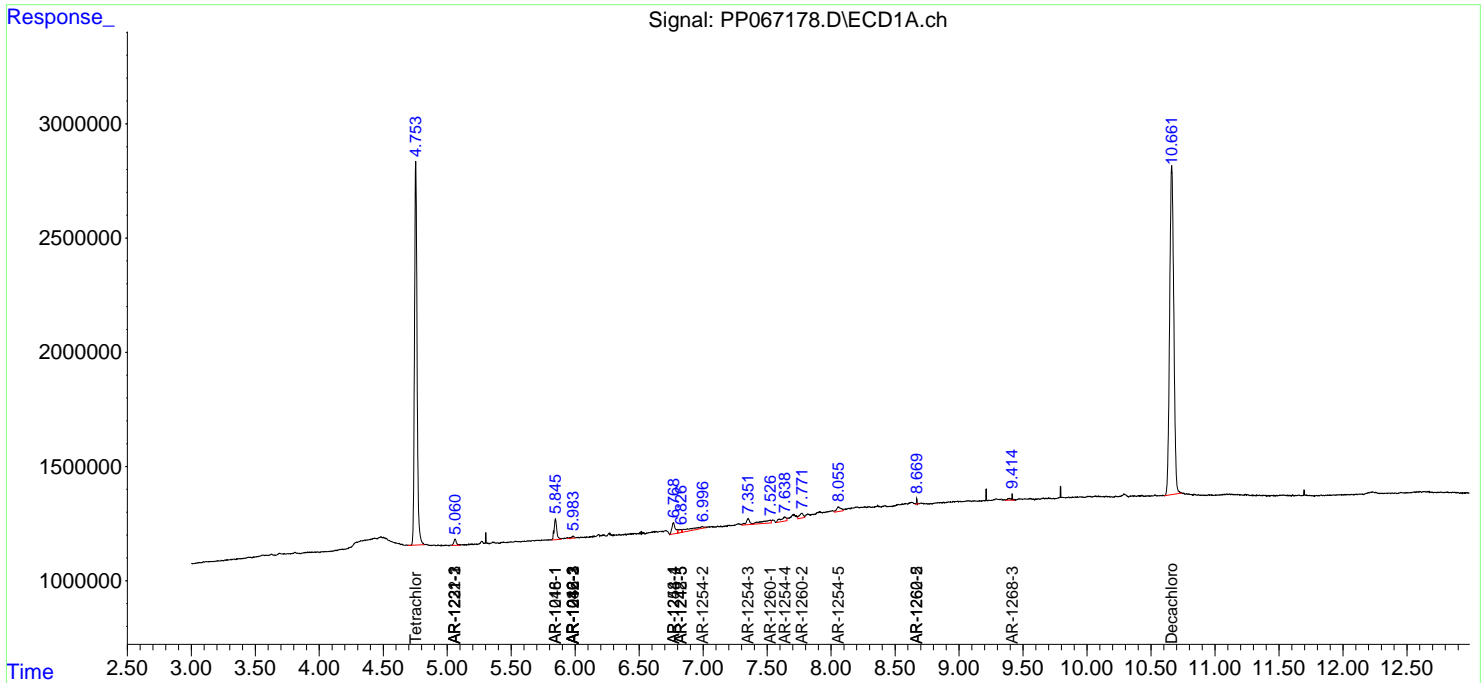
(f)=RT Delta > 1/2 Window (#)=Amounts differ by > 25% (m)=manual int.

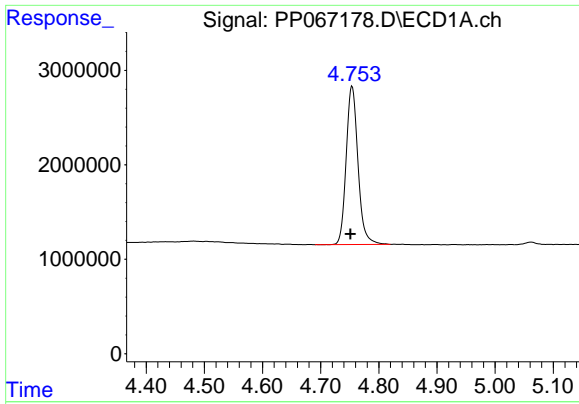
Data Path : Z:\pestpcbsrv\HPCHEM1\ECD_P\Data\PP092424\
 Data File : PP067178.D
 Signal(s) : Signal #1: ECD1A.ch Signal #2: ECD2B.ch
 Acq On : 24 Sep 2024 09:58
 Operator : YP\AJ
 Sample : I.BLK
 Misc :
 ALS Vial : 2 Sample Multiplier: 1

Instrument :
 ECD_P
 ClientSampleId :

Integration File signal 1: autoint1.e
 Integration File signal 2: autoint2.e
 Quant Time: Sep 24 11:35:39 2024
 Quant Method : Z:\pestpcbsrv\HPCHEM1\ECD_P\methods\PP091224.M
 Quant Title : GC EXTRACTABLES
 QLast Update : Fri Sep 13 08:31:31 2024
 Response via : Initial Calibration
 Integrator: ChemStation

Volume Inj. : 2 µl
 Signal #1 Phase : ZB-MR1 Signal #2 Phase: ZB-MR2
 Signal #1 Info : 30Mx0.32mmx 0.50µ Signal #2 Info : 30M x 0.32mm x 0.25µm

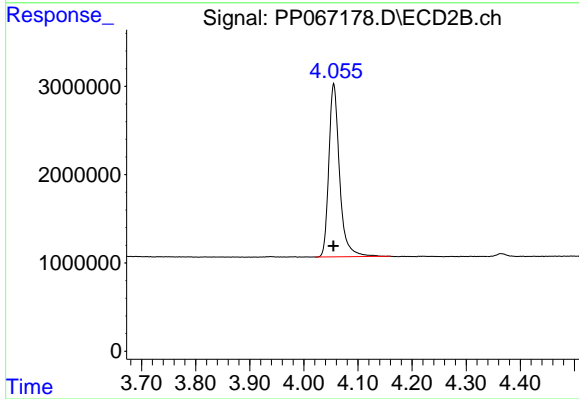




#1 Tetrachloro-m-xylene

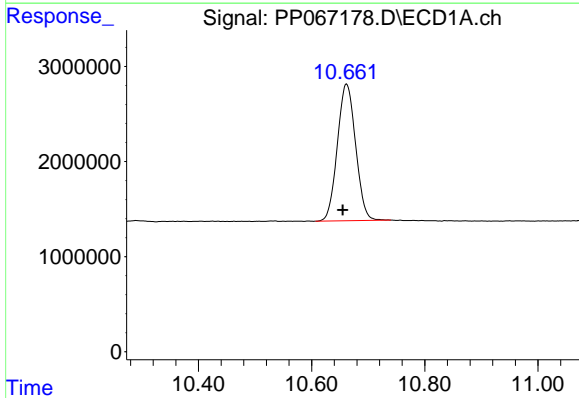
R.T.: 4.754 min
 Delta R.T.: 0.003 min
 Response: 23607001
 Conc: 19.15 ng/ml

Instrument :
 ECD_P
 ClientSampleId :



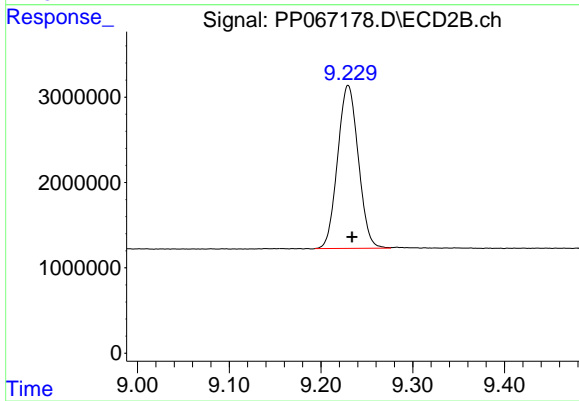
#1 Tetrachloro-m-xylene

R.T.: 4.055 min
 Delta R.T.: 0.000 min
 Response: 26984833
 Conc: 19.33 ng/ml



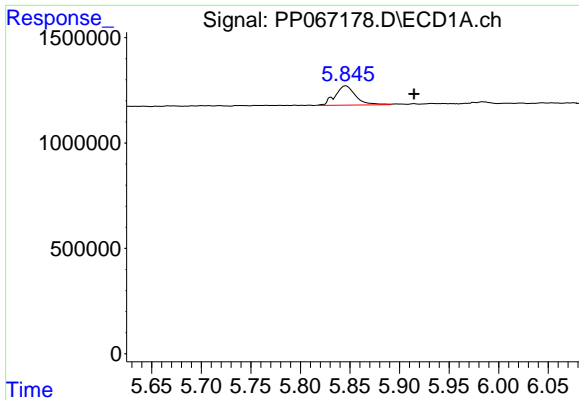
#2 Decachlorobiphenyl

R.T.: 10.662 min
 Delta R.T.: 0.007 min
 Response: 32210337
 Conc: 24.73 ng/ml



#2 Decachlorobiphenyl

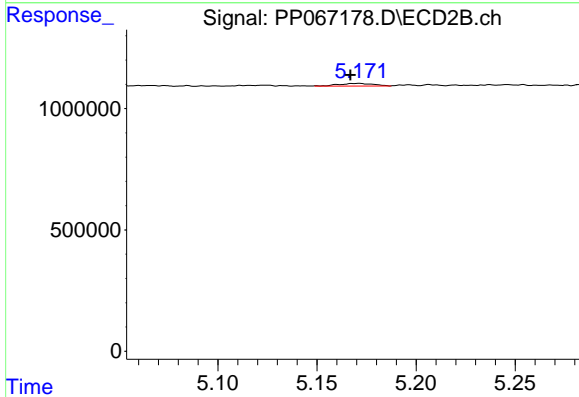
R.T.: 9.230 min
 Delta R.T.: -0.004 min
 Response: 29923487
 Conc: 22.56 ng/ml



#3 AR-1016-1

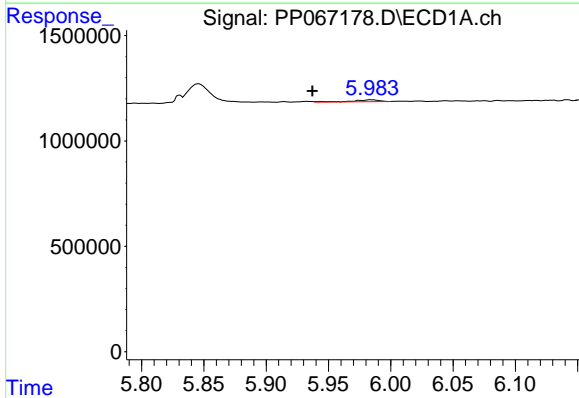
R.T.: 5.846 min
 Delta R.T.: -0.069 min
 Response: 1323689
 Conc: 30.30 ng/ml

Instrument :
 ECD_P
 ClientSampleId :



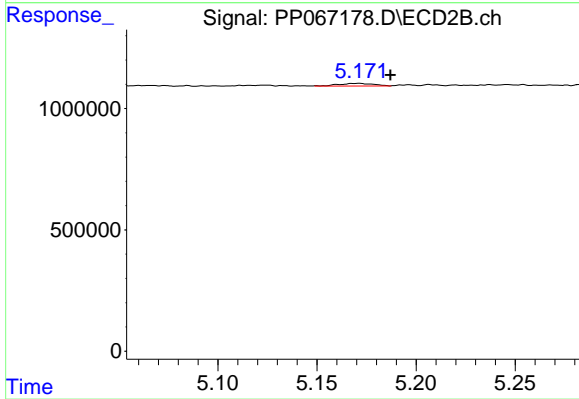
#3 AR-1016-1

R.T.: 5.171 min
 Delta R.T.: 0.004 min
 Response: 137302
 Conc: 2.93 ng/ml



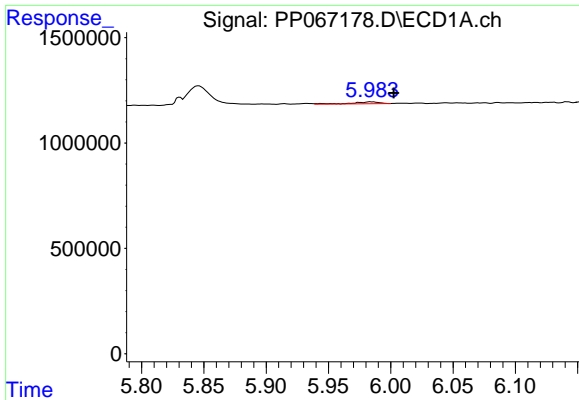
#4 AR-1016-2

R.T.: 5.984 min
 Delta R.T.: 0.047 min
 Response: 128162
 Conc: 1.95 ng/ml



#4 AR-1016-2

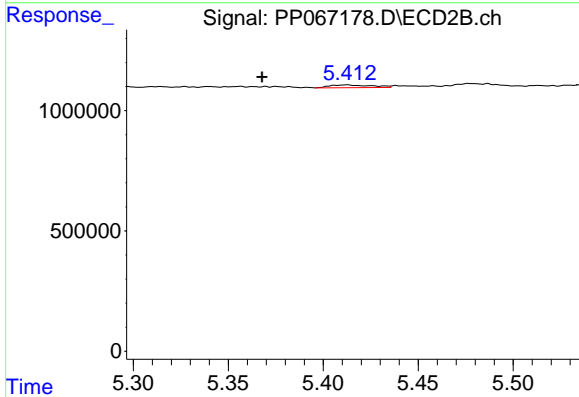
R.T.: 5.171 min
 Delta R.T.: -0.016 min
 Response: 137302
 Conc: 2.09 ng/ml



#5 AR-1016-3

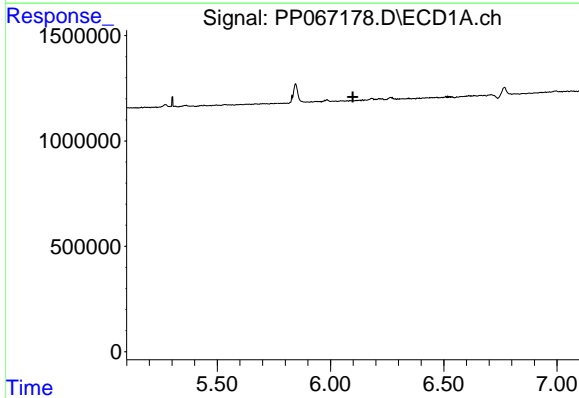
R.T.: 5.984 min
 Delta R.T.: -0.019 min
 Response: 128162
 Conc: 2.97 ng/ml

Instrument :
 ECD_P
 ClientSampleId :



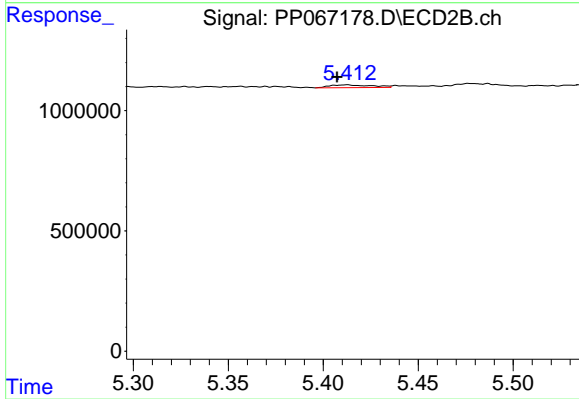
#5 AR-1016-3

R.T.: 5.412 min
 Delta R.T.: 0.045 min
 Response: 175257
 Conc: 4.72 ng/ml



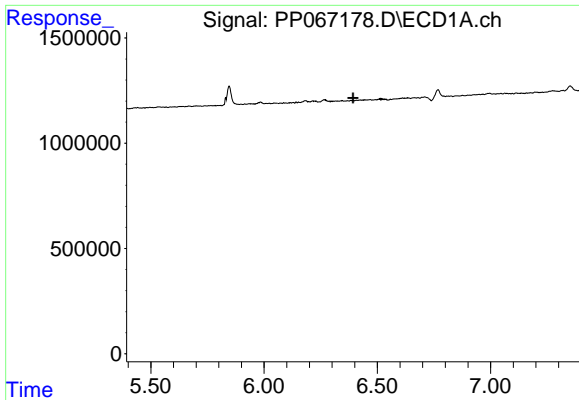
#6 AR-1016-4

R.T.: 0.000 min
 Exp R.T. : 6.098 min
 Response: 0
 Conc: N.D.



#6 AR-1016-4

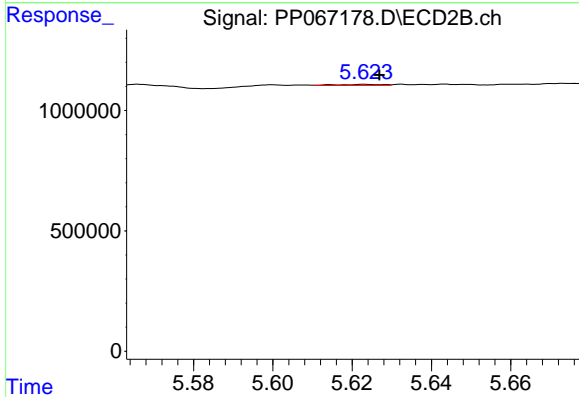
R.T.: 5.412 min
 Delta R.T.: 0.005 min
 Response: 175257
 Conc: 5.30 ng/ml



#7 AR-1016-5

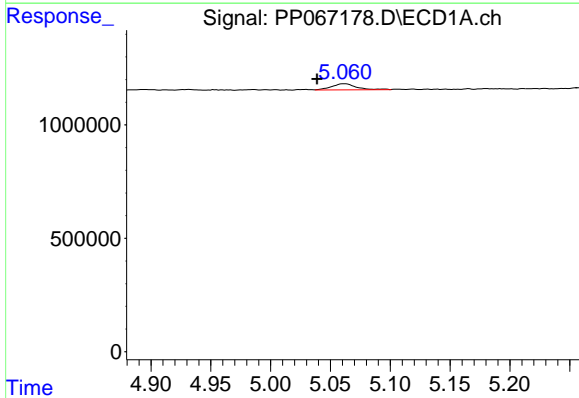
R.T.: 0.000 min
 Exp R.T.: 6.393 min
 Response: 0
 Conc: N.D.

Instrument :
 ECD_P
 ClientSampleId :



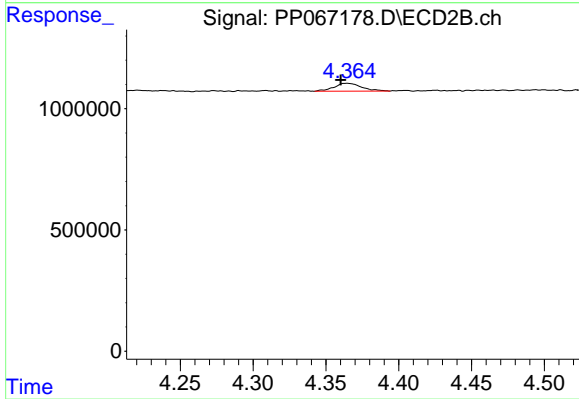
#7 AR-1016-5

R.T.: 5.623 min
 Delta R.T.: -0.004 min
 Response: 31981
 Conc: 0.80 ng/ml



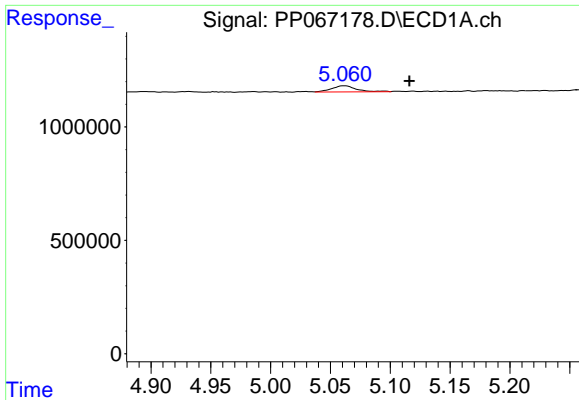
#9 AR-1221-2

R.T.: 5.062 min
 Delta R.T.: 0.023 min
 Response: 380768
 Conc: 31.98 ng/ml



#9 AR-1221-2

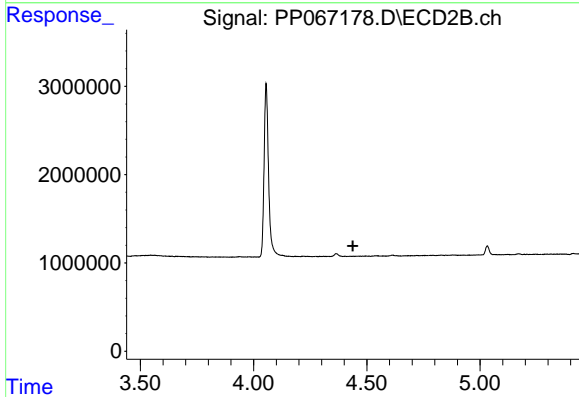
R.T.: 4.364 min
 Delta R.T.: 0.004 min
 Response: 424496
 Conc: 31.37 ng/ml



#10 AR-1221-3

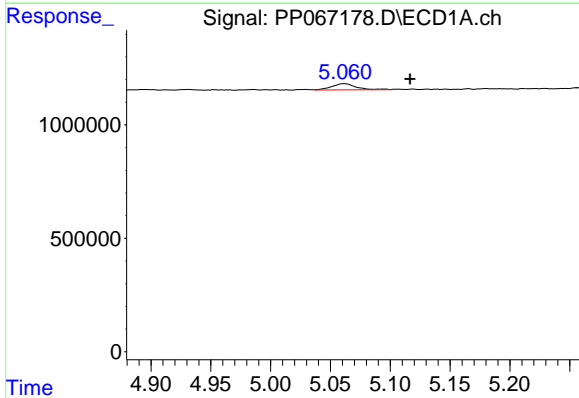
R.T.: 5.062 min
 Delta R.T.: -0.054 min
 Response: 380768
 Conc: 10.37 ng/ml

Instrument :
 ECD_P
 ClientSampleId :



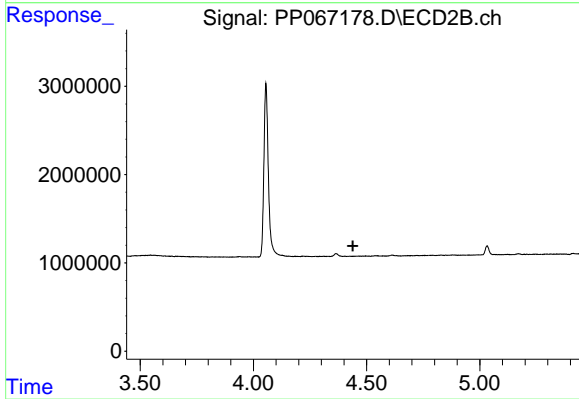
#10 AR-1221-3

R.T.: 0.000 min
 Exp R.T. : 4.439 min
 Response: 0
 Conc: N.D.



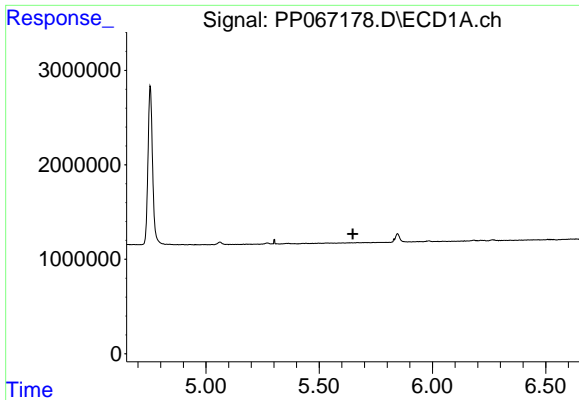
#11 AR-1232-1

R.T.: 5.062 min
 Delta R.T.: -0.055 min
 Response: 380768
 Conc: 12.53 ng/ml



#11 AR-1232-1

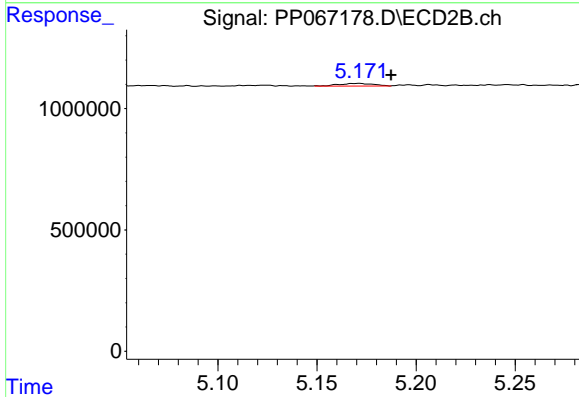
R.T.: 0.000 min
 Exp R.T. : 4.439 min
 Response: 0
 Conc: N.D.



#12 AR-1232-2

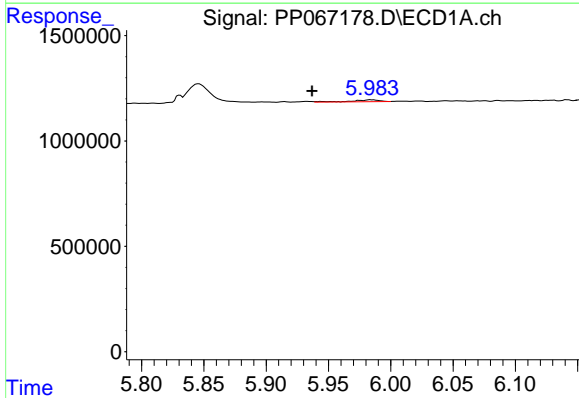
R.T.: 0.000 min
 Exp R.T.: 5.649 min
 Response: 0
 Conc: N.D.

Instrument :
 ECD_P
 ClientSampleId :



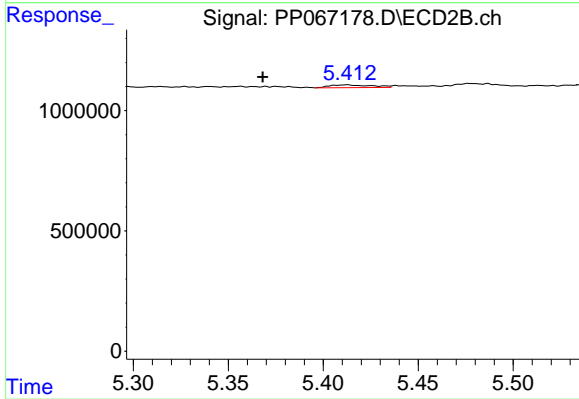
#12 AR-1232-2

R.T.: 5.171 min
 Delta R.T.: -0.016 min
 Response: 137302
 Conc: 4.41 ng/ml



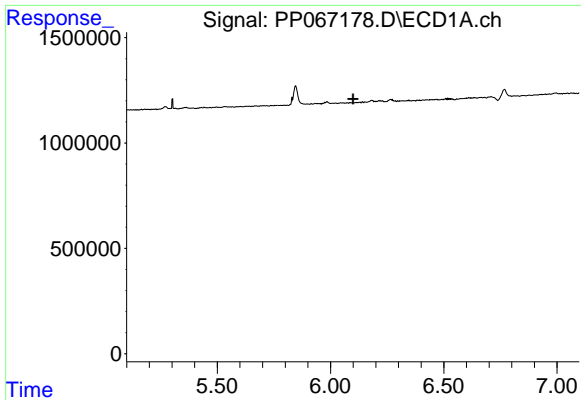
#13 AR-1232-3

R.T.: 5.984 min
 Delta R.T.: 0.047 min
 Response: 128162
 Conc: 4.33 ng/ml



#13 AR-1232-3

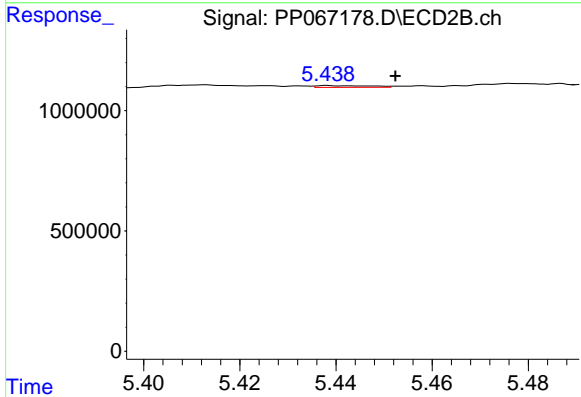
R.T.: 5.412 min
 Delta R.T.: 0.044 min
 Response: 175257
 Conc: 10.32 ng/ml



#14 AR-1232-4

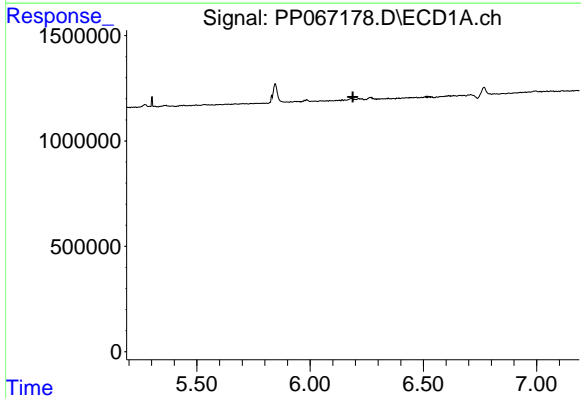
R.T.: 0.000 min
 Exp R.T.: 6.099 min
 Response: 0
 Conc: N.D.

Instrument :
 ECD_P
 ClientSampleId :



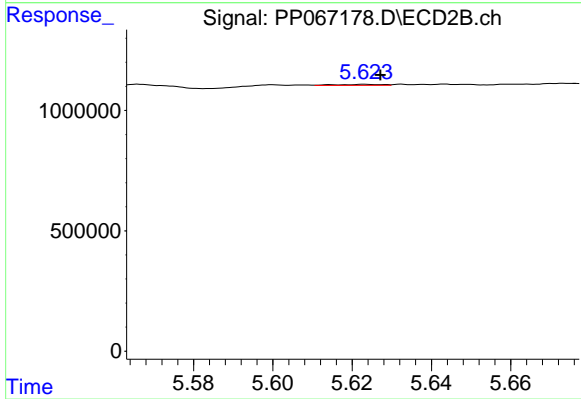
#14 AR-1232-4

R.T.: 5.438 min
 Delta R.T.: -0.014 min
 Response: 53978
 Conc: 3.20 ng/ml



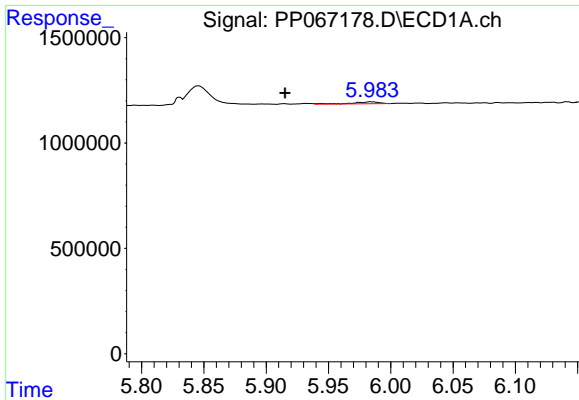
#15 AR-1232-5

R.T.: 0.000 min
 Exp R.T.: 6.188 min
 Response: 0
 Conc: N.D.



#15 AR-1232-5

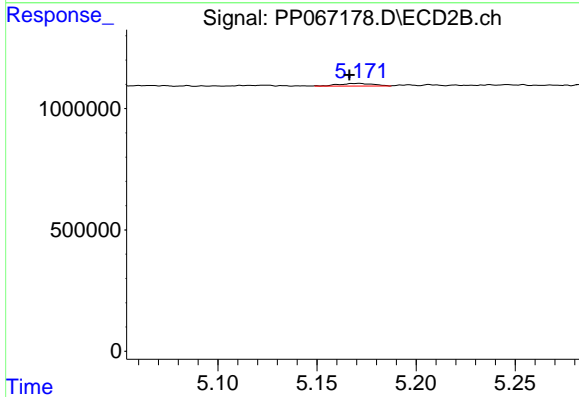
R.T.: 5.623 min
 Delta R.T.: -0.004 min
 Response: 31981
 Conc: 1.84 ng/ml



#16 AR-1242-1

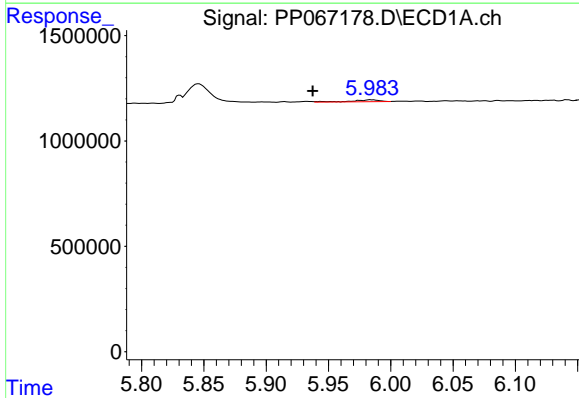
R.T.: 5.984 min
 Delta R.T.: 0.069 min
 Response: 128162
 Conc: 3.73 ng/ml

Instrument :
 ECD_P
 ClientSampleId :



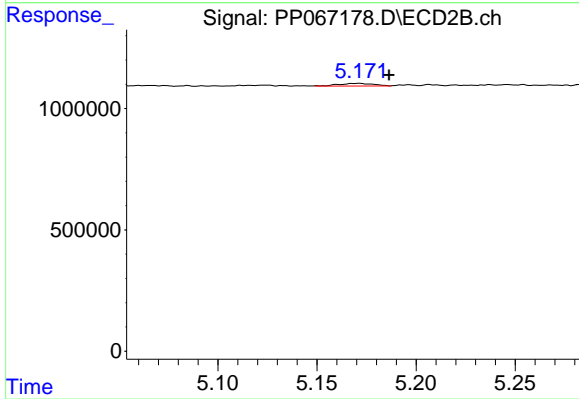
#16 AR-1242-1

R.T.: 5.171 min
 Delta R.T.: 0.005 min
 Response: 137302
 Conc: 3.77 ng/ml



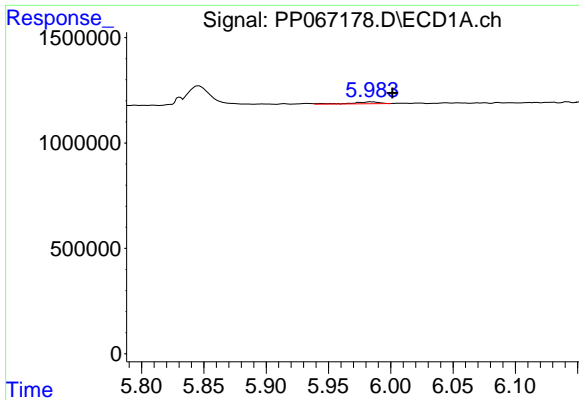
#17 AR-1242-2

R.T.: 5.984 min
 Delta R.T.: 0.046 min
 Response: 128162
 Conc: 2.51 ng/ml



#17 AR-1242-2

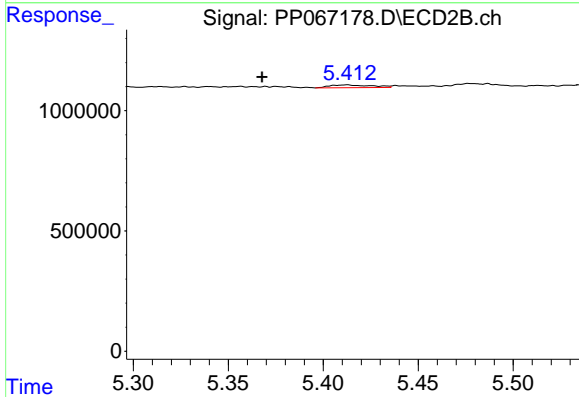
R.T.: 5.171 min
 Delta R.T.: -0.015 min
 Response: 137302
 Conc: 2.74 ng/ml



#18 AR-1242-3

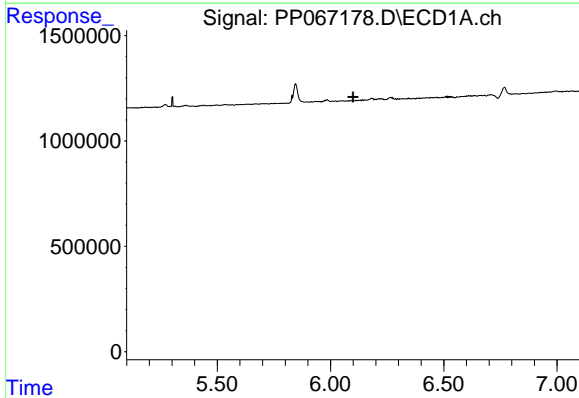
R.T.: 5.984 min
 Delta R.T.: -0.017 min
 Response: 128162
 Conc: 3.77 ng/ml

Instrument :
 ECD_P
 ClientSampleId :



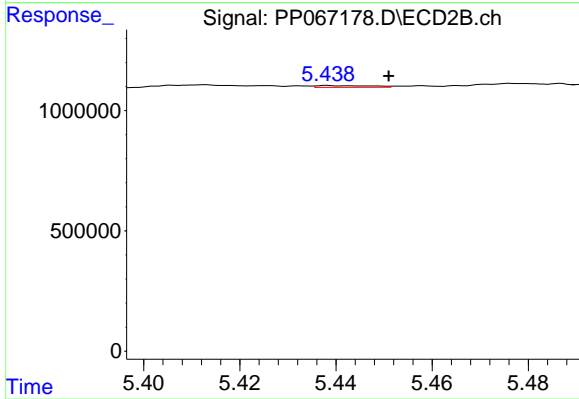
#18 AR-1242-3

R.T.: 5.412 min
 Delta R.T.: 0.045 min
 Response: 175257
 Conc: 6.05 ng/ml



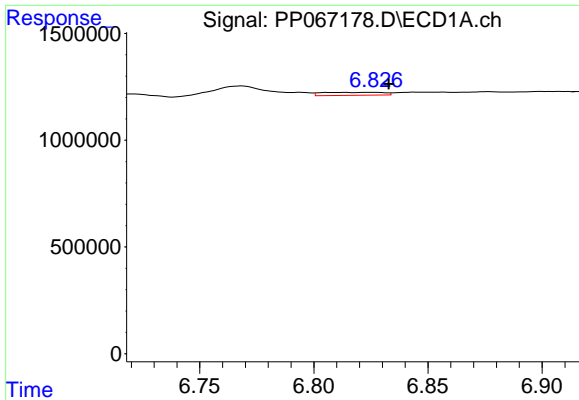
#19 AR-1242-4

R.T.: 0.000 min
 Exp R.T. : 6.099 min
 Response: 0
 Conc: N.D.



#19 AR-1242-4

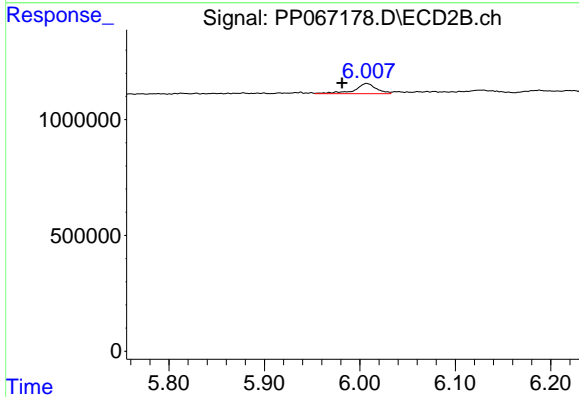
R.T.: 5.438 min
 Delta R.T.: -0.013 min
 Response: 53978
 Conc: 1.72 ng/ml



#20 AR-1242-5

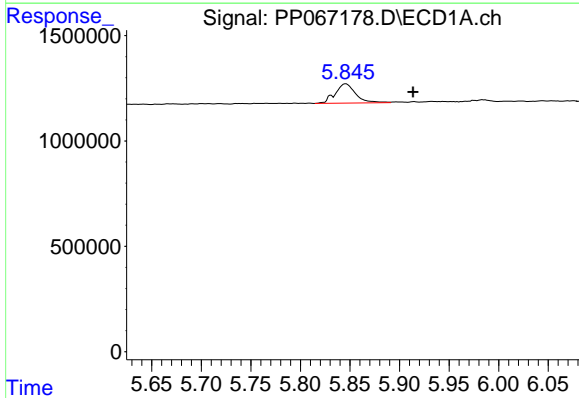
R.T.: 6.826 min
 Delta R.T.: -0.007 min
 Response: 257113
 Conc: 9.23 ng/ml

Instrument :
 ECD_P
 ClientSampleId :



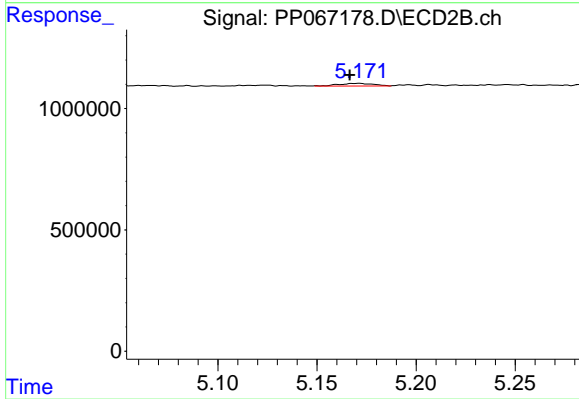
#20 AR-1242-5

R.T.: 6.007 min
 Delta R.T.: 0.026 min
 Response: 700468
 Conc: 19.55 ng/ml



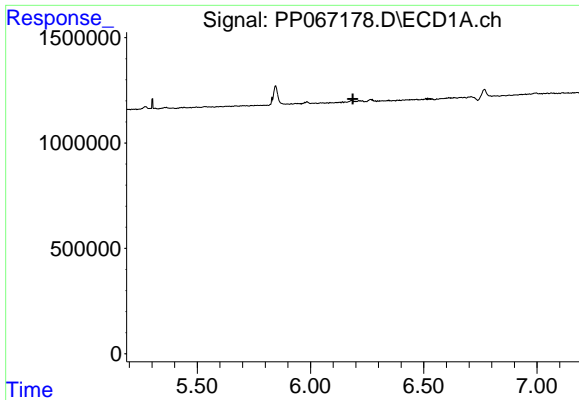
#21 AR-1248-1

R.T.: 5.846 min
 Delta R.T.: -0.068 min
 Response: 1323689
 Conc: 48.42 ng/ml



#21 AR-1248-1

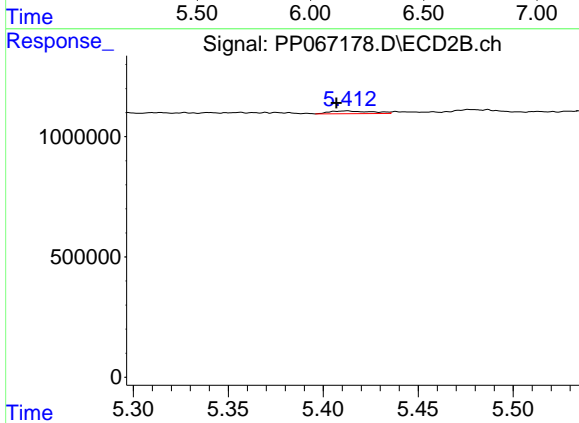
R.T.: 5.171 min
 Delta R.T.: 0.005 min
 Response: 137302
 Conc: 4.68 ng/ml



#22 AR-1248-2

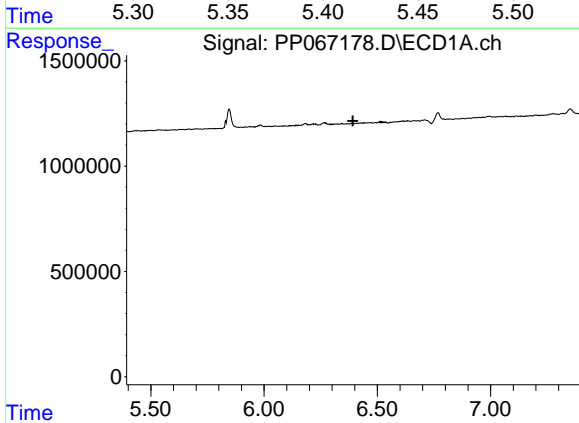
R.T.: 0.000 min
 Exp R.T.: 6.187 min
 Response: 0
 Conc: N.D.

Instrument :
 ECD_P
 ClientSampleId :



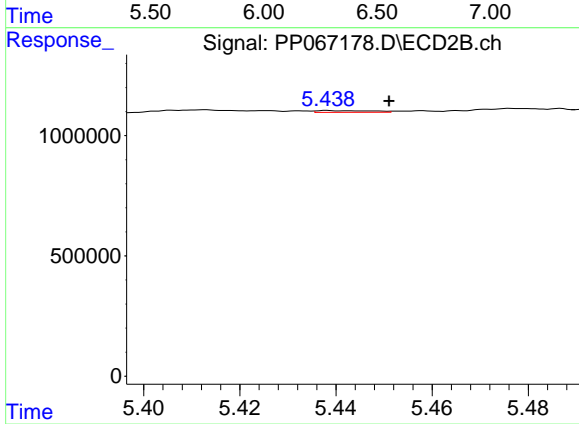
#22 AR-1248-2

R.T.: 5.412 min
 Delta R.T.: 0.005 min
 Response: 175257
 Conc: 3.99 ng/ml



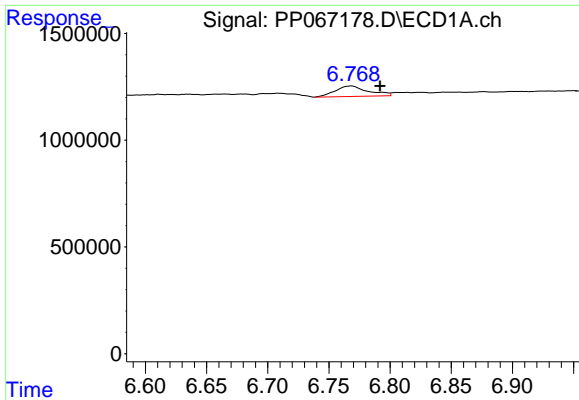
#23 AR-1248-3

R.T.: 0.000 min
 Exp R.T.: 6.392 min
 Response: 0
 Conc: N.D.



#23 AR-1248-3

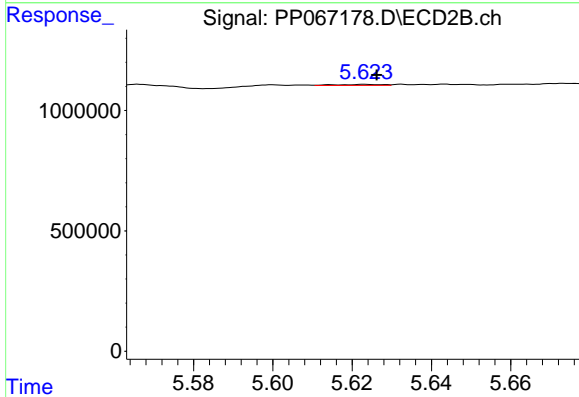
R.T.: 5.438 min
 Delta R.T.: -0.013 min
 Response: 53978
 Conc: 1.17 ng/ml



#24 AR-1248-4

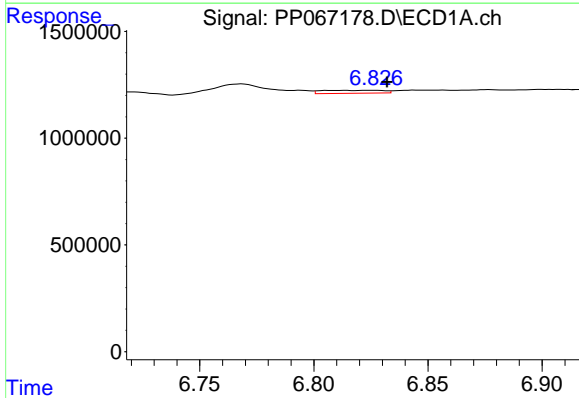
R.T.: 6.769 min
 Delta R.T.: -0.023 min
 Response: 914130
 Conc: 18.22 ng/ml

Instrument :
 ECD_P
 ClientSampleId :



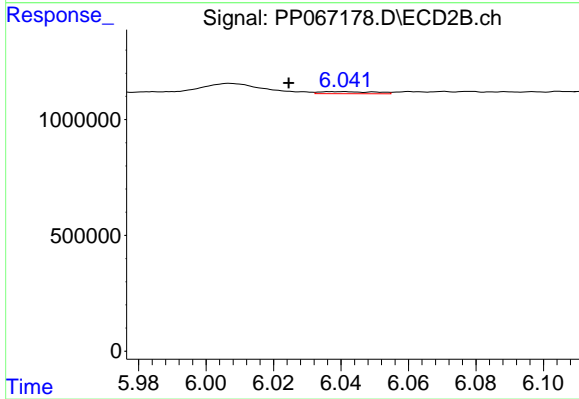
#24 AR-1248-4

R.T.: 5.623 min
 Delta R.T.: -0.003 min
 Response: 31981
 Conc: 0.61 ng/ml



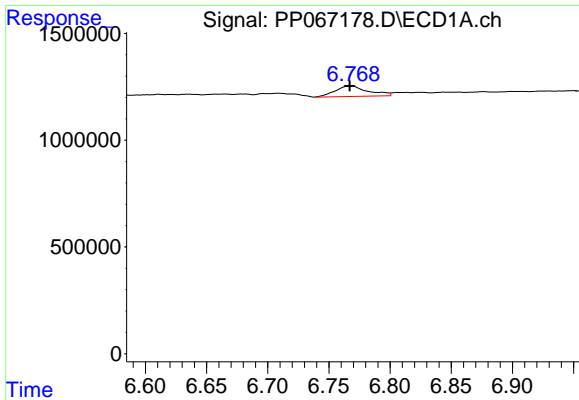
#25 AR-1248-5

R.T.: 6.826 min
 Delta R.T.: -0.006 min
 Response: 257113
 Conc: 5.11 ng/ml



#25 AR-1248-5

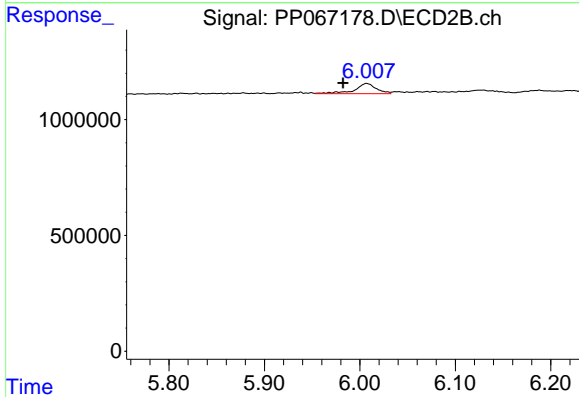
R.T.: 6.040 min
 Delta R.T.: 0.016 min
 Response: 101804
 Conc: 2.21 ng/ml



#26 AR-1254-1

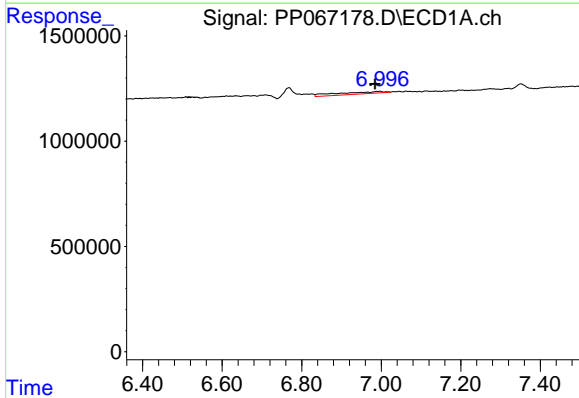
R.T.: 6.769 min
 Delta R.T.: 0.002 min
 Response: 914130
 Conc: 16.28 ng/ml

Instrument :
 ECD_P
 ClientSampleId :



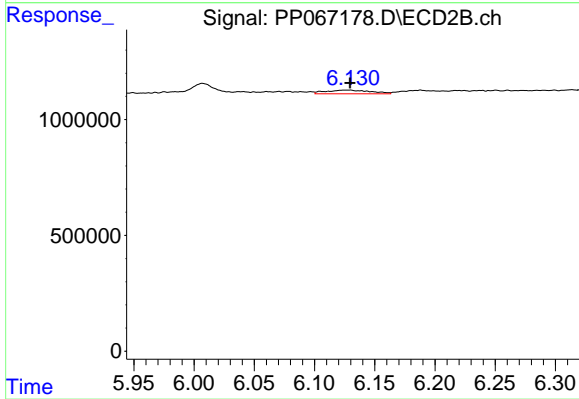
#26 AR-1254-1

R.T.: 6.007 min
 Delta R.T.: 0.025 min
 Response: 700468
 Conc: 9.53 ng/ml



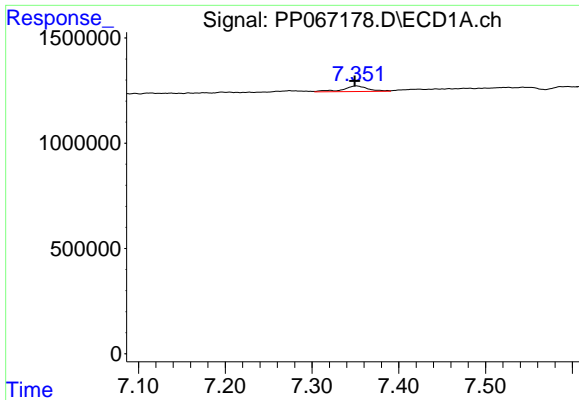
#27 AR-1254-2

R.T.: 6.997 min
 Delta R.T.: 0.012 min
 Response: 840489
 Conc: 10.16 ng/ml



#27 AR-1254-2

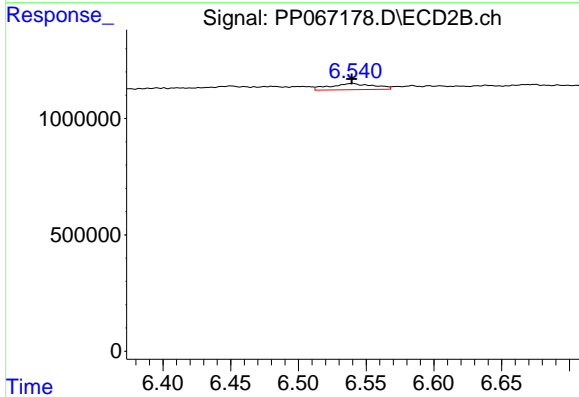
R.T.: 6.126 min
 Delta R.T.: -0.004 min
 Response: 414105
 Conc: 6.20 ng/ml



#28 AR-1254-3

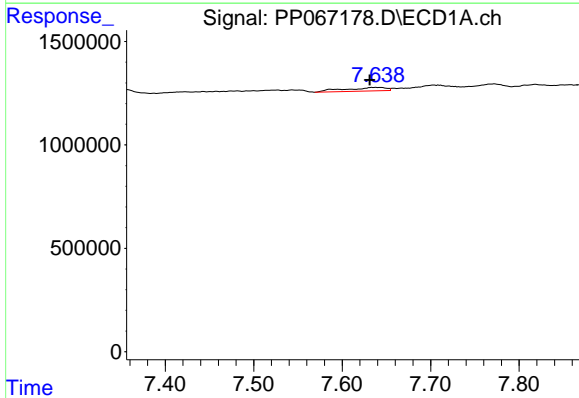
R.T.: 7.351 min
 Delta R.T.: 0.002 min
 Response: 530911
 Conc: 6.28 ng/ml

Instrument :
 ECD_P
 ClientSampleId :



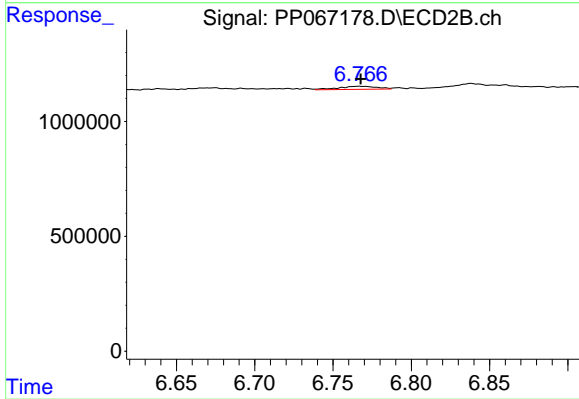
#28 AR-1254-3

R.T.: 6.540 min
 Delta R.T.: 0.000 min
 Response: 596467
 Conc: 5.86 ng/ml



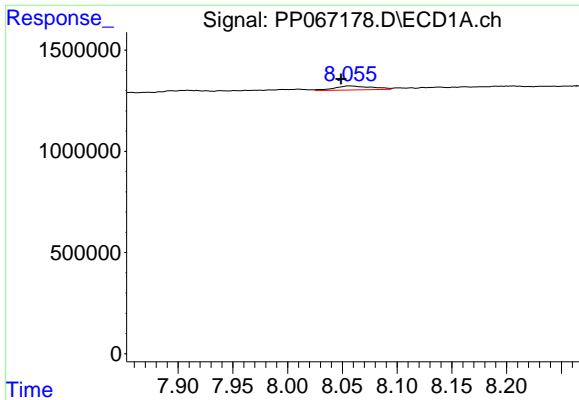
#29 AR-1254-4

R.T.: 7.638 min
 Delta R.T.: 0.007 min
 Response: 570201
 Conc: 9.88 ng/ml



#29 AR-1254-4

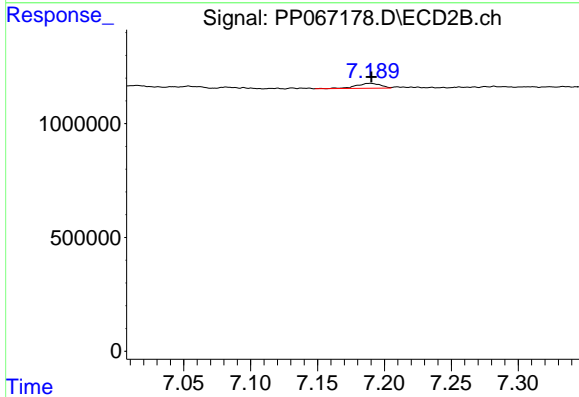
R.T.: 6.766 min
 Delta R.T.: -0.001 min
 Response: 224652
 Conc: 4.32 ng/ml



#30 AR-1254-5

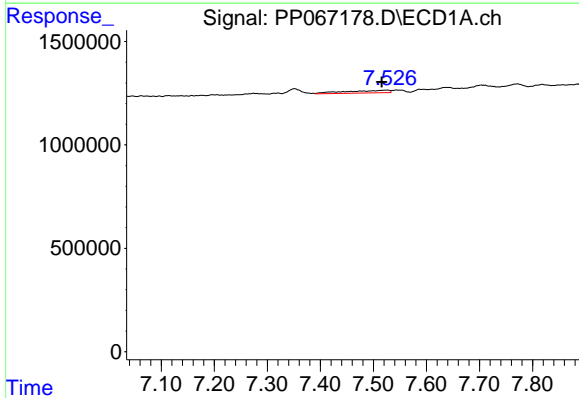
R.T.: 8.057 min
 Delta R.T.: 0.008 min
 Response: 473368
 Conc: 7.03 ng/ml

Instrument :
 ECD_P
 ClientSampleId :



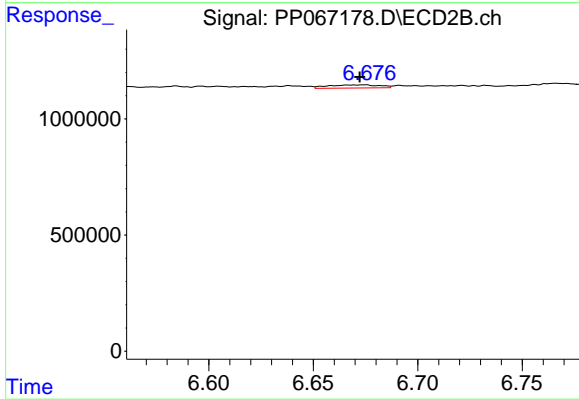
#30 AR-1254-5

R.T.: 7.189 min
 Delta R.T.: -0.001 min
 Response: 275230
 Conc: 3.03 ng/ml



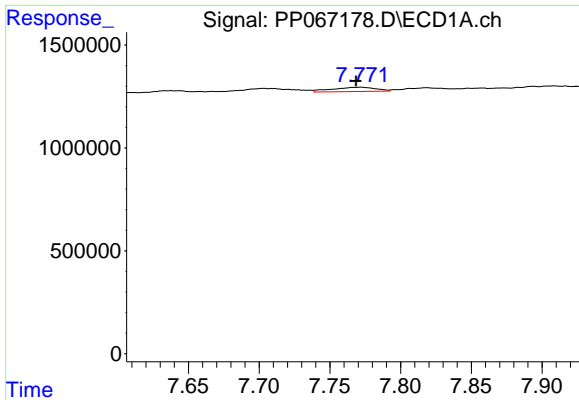
#31 AR-1260-1

R.T.: 7.526 min
 Delta R.T.: 0.010 min
 Response: 715794
 Conc: 9.78 ng/ml



#31 AR-1260-1

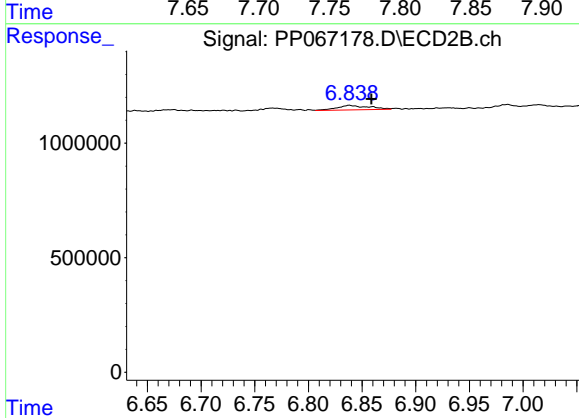
R.T.: 6.674 min
 Delta R.T.: 0.002 min
 Response: 229573
 Conc: 2.94 ng/ml



#32 AR-1260-2

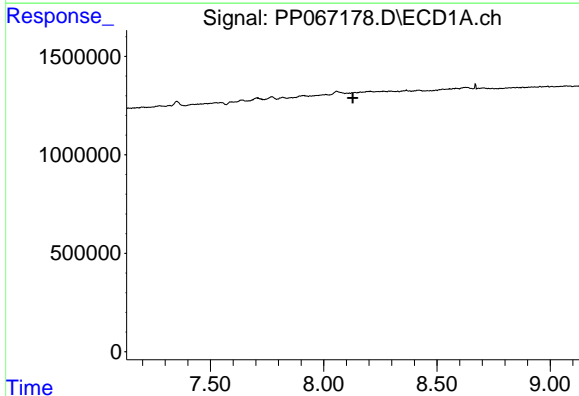
R.T.: 7.771 min
 Delta R.T.: 0.003 min
 Response: 446700
 Conc: 5.48 ng/ml

Instrument :
 ECD_P
 ClientSampleId :



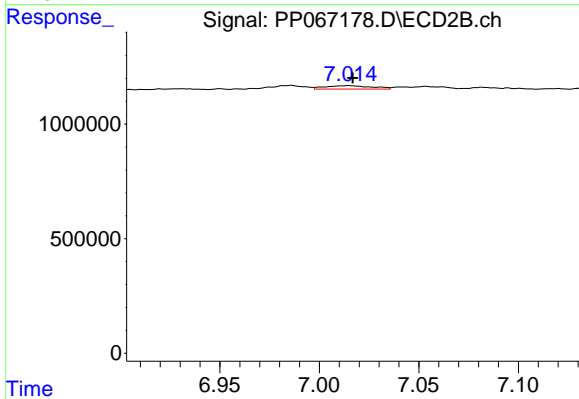
#32 AR-1260-2

R.T.: 6.838 min
 Delta R.T.: -0.020 min
 Response: 412817
 Conc: 4.80 ng/ml



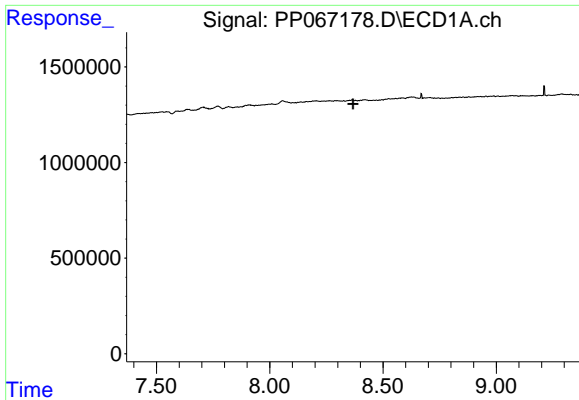
#33 AR-1260-3

R.T.: 0.000 min
 Exp R.T. : 8.129 min
 Response: 0
 Conc: N.D.



#33 AR-1260-3

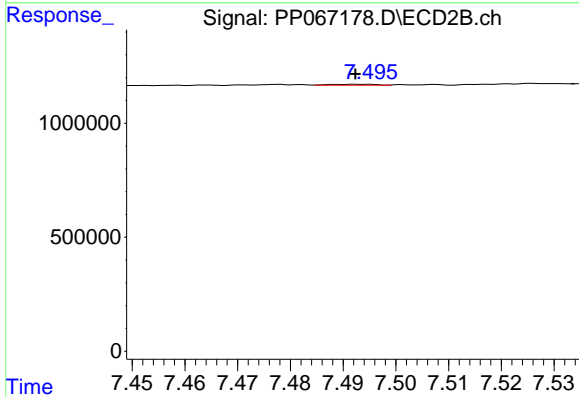
R.T.: 7.015 min
 Delta R.T.: -0.002 min
 Response: 245052
 Conc: 2.86 ng/ml



#34 AR-1260-4

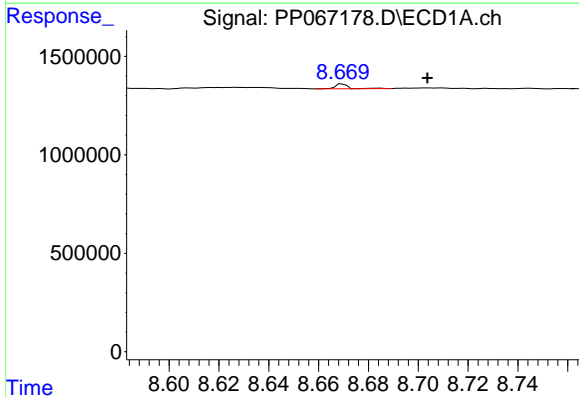
R.T.: 0.000 min
 Exp R.T.: 8.368 min
 Response: 0
 Conc: N.D.

Instrument :
 ECD_P
 ClientSampleId :



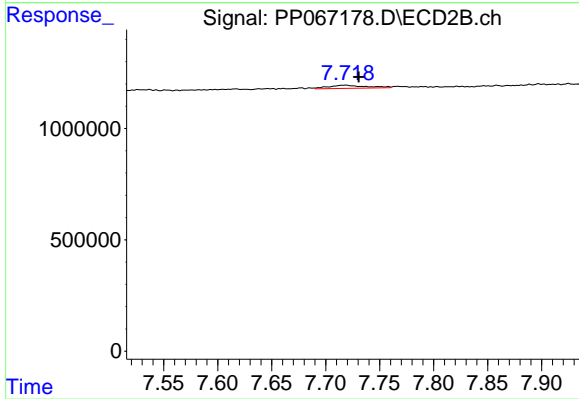
#34 AR-1260-4

R.T.: 7.493 min
 Delta R.T.: 0.000 min
 Response: 24169
 Conc: 0.38 ng/ml



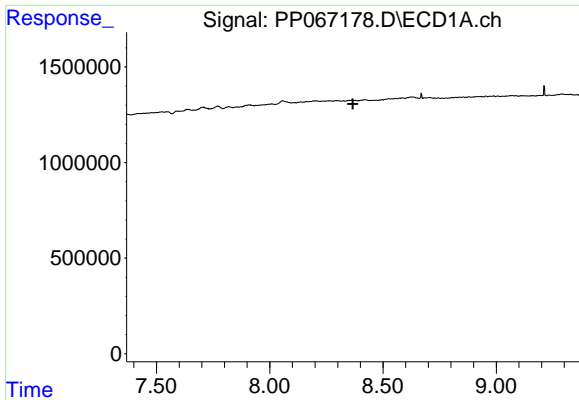
#35 AR-1260-5

R.T.: 8.670 min
 Delta R.T.: -0.034 min
 Response: 86582
 Conc: 0.74 ng/ml



#35 AR-1260-5

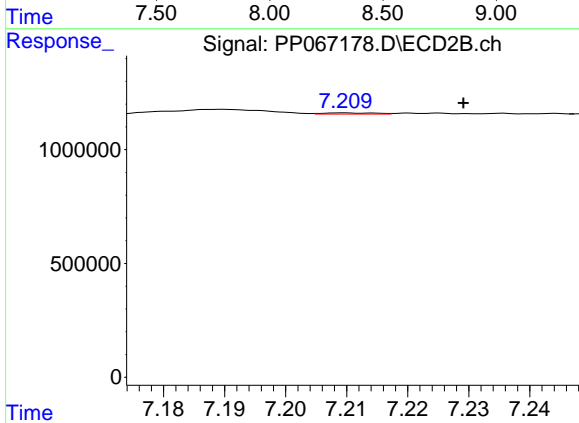
R.T.: 7.718 min
 Delta R.T.: -0.013 min
 Response: 338659
 Conc: 2.55 ng/ml



#36 AR-1262-1

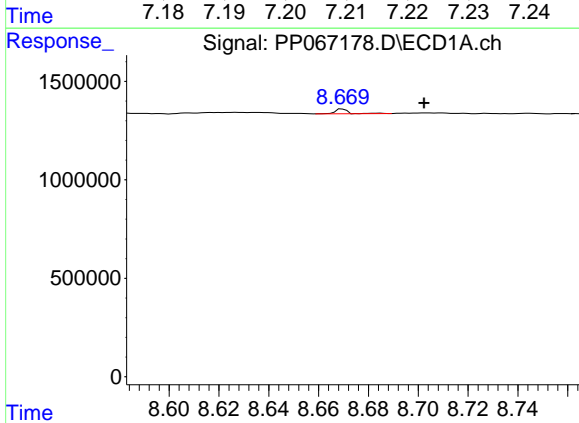
R.T.: 0.000 min
 Exp R.T.: 8.367 min
 Response: 0
 Conc: N.D.

Instrument :
 ECD_P
 ClientSampleId :



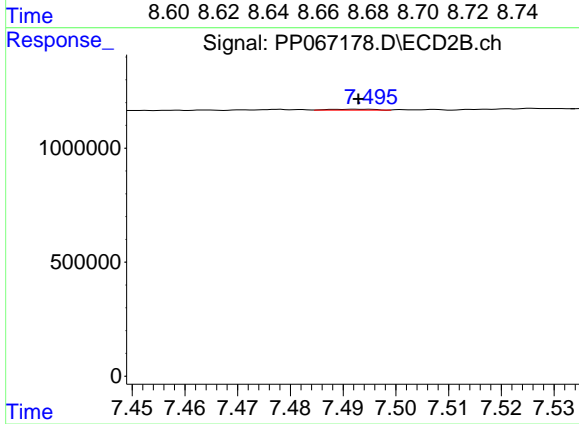
#36 AR-1262-1

R.T.: 7.210 min
 Delta R.T.: -0.020 min
 Response: 30494
 Conc: 0.31 ng/ml



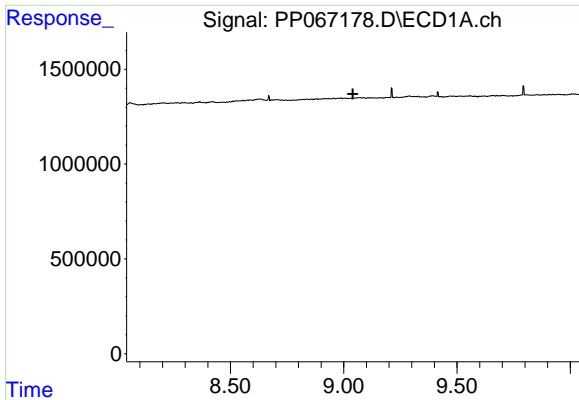
#37 AR-1262-2

R.T.: 8.670 min
 Delta R.T.: -0.033 min
 Response: 86582
 Conc: 0.60 ng/ml



#37 AR-1262-2

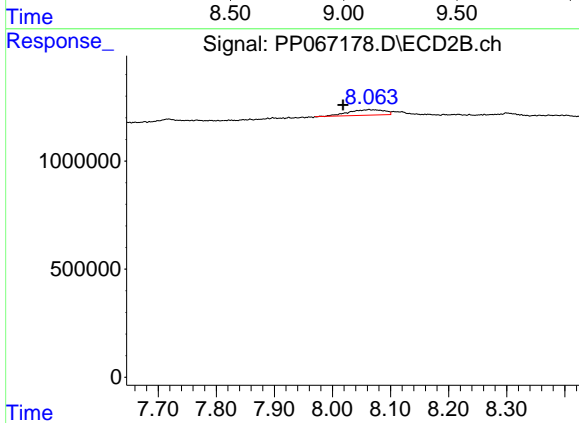
R.T.: 7.493 min
 Delta R.T.: 0.000 min
 Response: 24169
 Conc: 0.28 ng/ml



#38 AR-1262-3

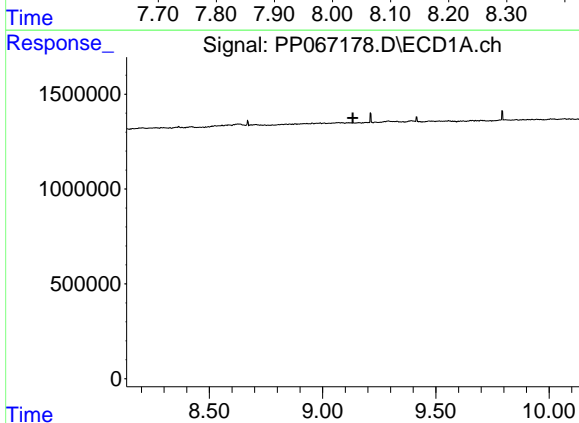
R.T.: 0.000 min
 Exp R.T.: 9.040 min
 Response: 0
 Conc: N.D.

Instrument :
 ECD_P
 ClientSampleId :



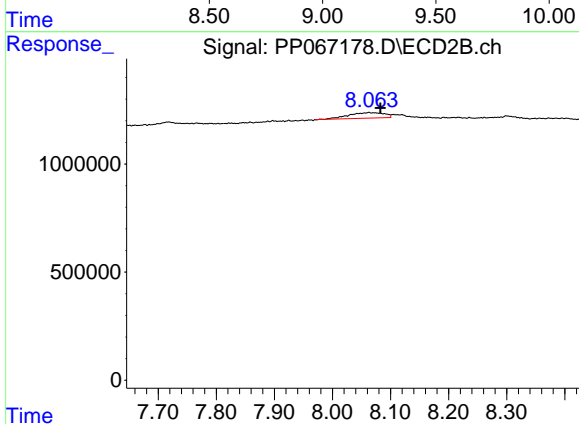
#38 AR-1262-3

R.T.: 8.063 min
 Delta R.T.: 0.045 min
 Response: 1117691
 Conc: 16.66 ng/ml



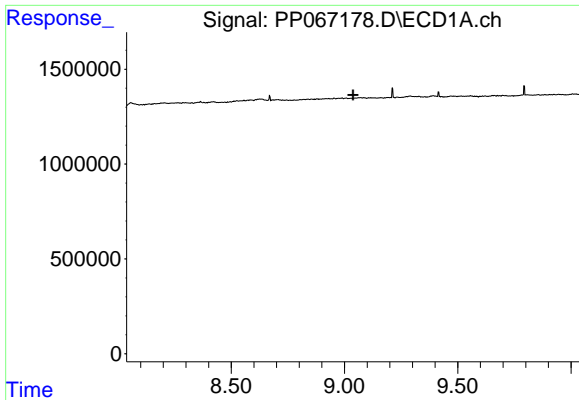
#39 AR-1262-4

R.T.: 0.000 min
 Exp R.T.: 9.133 min
 Response: 0
 Conc: N.D.



#39 AR-1262-4

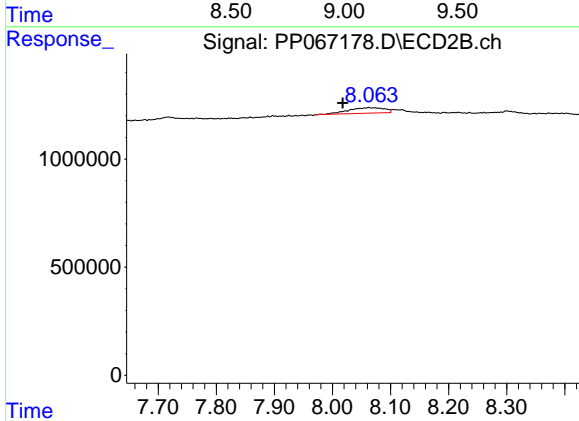
R.T.: 8.063 min
 Delta R.T.: -0.020 min
 Response: 1117691
 Conc: 9.74 ng/ml



#41 AR-1268-1

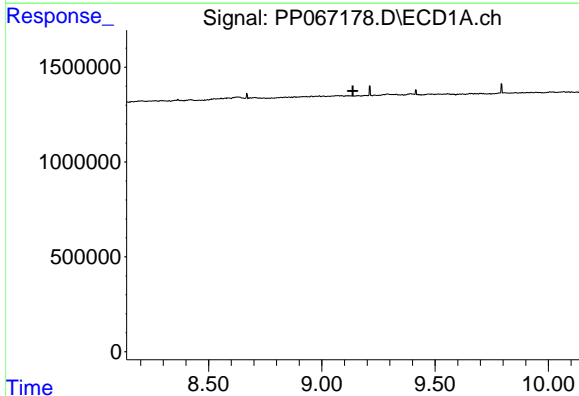
R.T.: 0.000 min
 Exp R.T.: 9.038 min
 Response: 0
 Conc: N.D.

Instrument :
 ECD_P
 ClientSampleId :



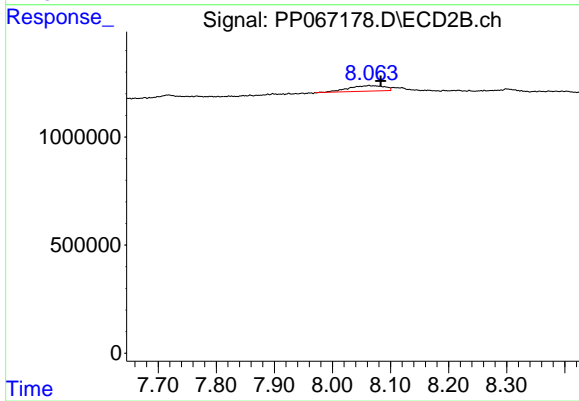
#41 AR-1268-1

R.T.: 8.063 min
 Delta R.T.: 0.045 min
 Response: 1117691
 Conc: 6.16 ng/ml



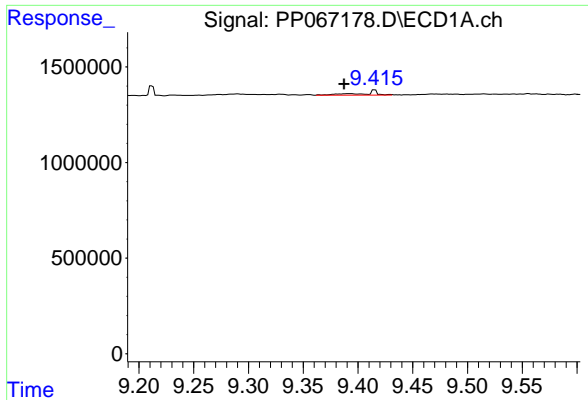
#42 AR-1268-2

R.T.: 0.000 min
 Exp R.T.: 9.137 min
 Response: 0
 Conc: N.D.



#42 AR-1268-2

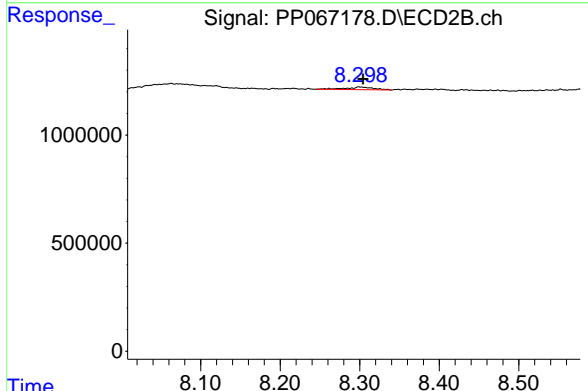
R.T.: 8.063 min
 Delta R.T.: -0.020 min
 Response: 1117691
 Conc: 7.04 ng/ml



#43 AR-1268-3

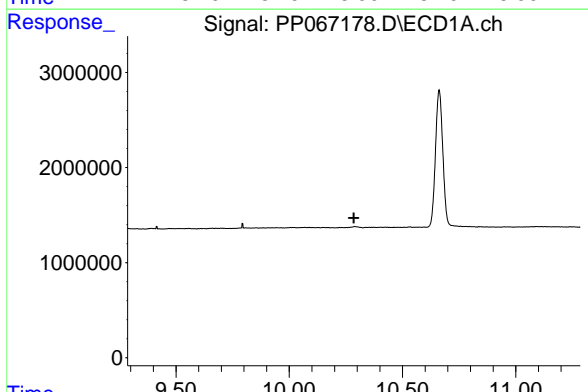
R.T.: 9.415 min
 Delta R.T.: 0.028 min
 Response: 254566
 Conc: 1.73 ng/ml

Instrument :
 ECD_P
 ClientSampleId :



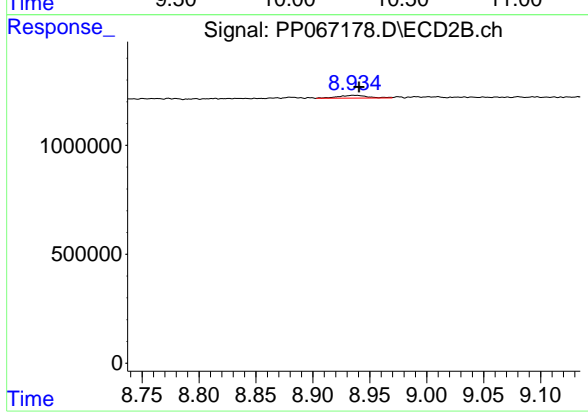
#43 AR-1268-3

R.T.: 8.299 min
 Delta R.T.: -0.005 min
 Response: 312815
 Conc: 2.09 ng/ml



#45 AR-1268-5

R.T.: 0.000 min
 Exp R.T. : 10.285 min
 Response: 0
 Conc: N.D.



#45 AR-1268-5

R.T.: 8.936 min
 Delta R.T.: -0.005 min
 Response: 243508
 Conc: 0.61 ng/ml