

Data Path : Z:\pestpcbsrv\HPCHEM1\ECD_P\Data\PP092721\
 Data File : PP039528.D
 Signal(s) : Signal #1: ECD1A.CH Signal #2: ECD2B.CH
 Acq On : 27 Sep 2021 10:00
 Operator : AJ\MA
 Sample : I.BLK
 Misc :
 ALS Vial : 2 Sample Multiplier: 1

Instrument :
 ECD_P
 ClientSampleId :
 I.BLK

Integration File signal 1: autoint1.e
 Integration File signal 2: autoint2.e
 Quant Time: Sep 27 11:11:58 2021
 Quant Method : Z:\pestpcbsrv\HPCHEM1\ECD_P\methods\PP092421.M
 Quant Title : GC EXTRACTABLES
 QLast Update : Sat Sep 25 01:28:12 2021
 Response via : Initial Calibration
 Integrator: ChemStation 6890 Scale Mode: Small noise peaks clipped

Volume Inj. : 2 µl
 Signal #1 Phase : ZB-MR1 Signal #2 Phase: ZB-MR2
 Signal #1 Info : 30Mx0.32mmx 0.50µ Signal #2 Info : 30M x 0.32mm x 0.25µm

Compound	RT#1	RT#2	Resp#1	Resp#2	ng/ml	ng/ml

System Monitoring Compounds						
1) SA Tetrachlo...	4.905	3.996	727432	387275	22.978	23.768
2) SA Decachlor...	10.930	9.336	510189	532665	23.518	24.376

Target Compounds

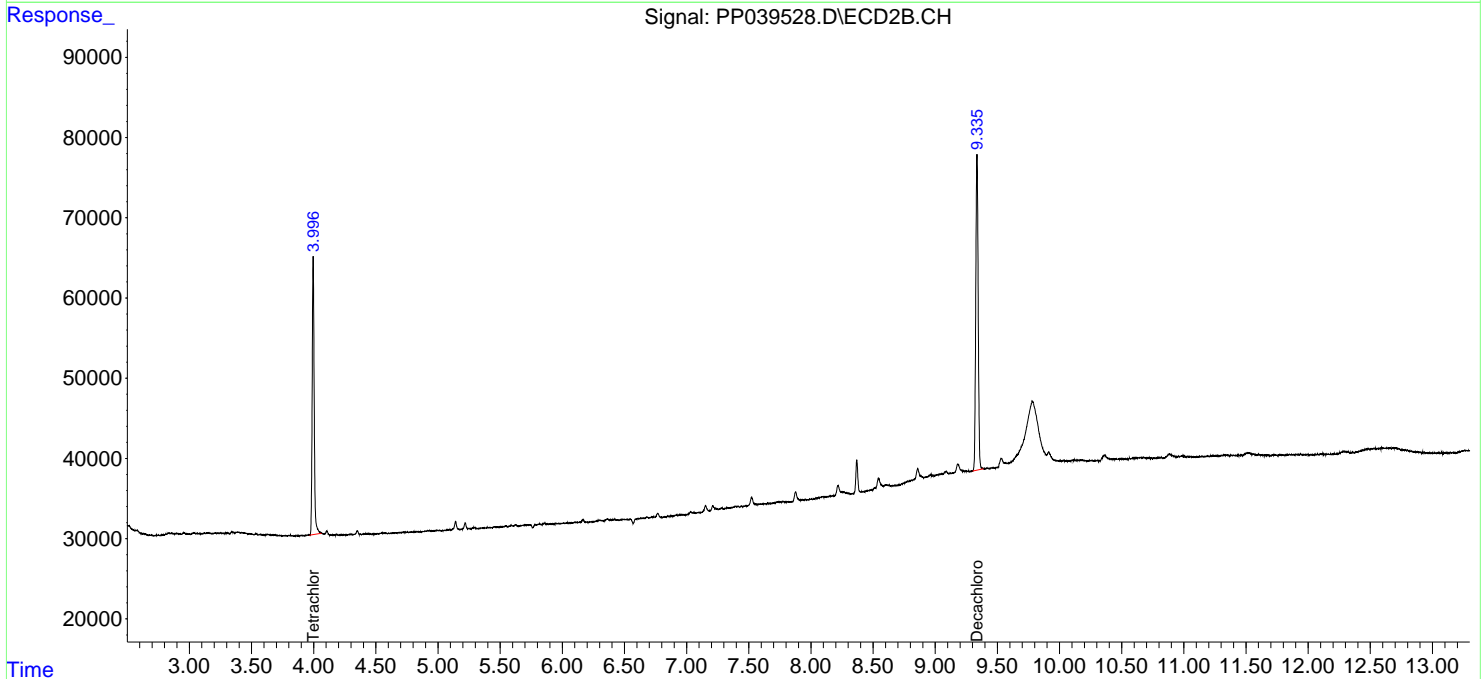
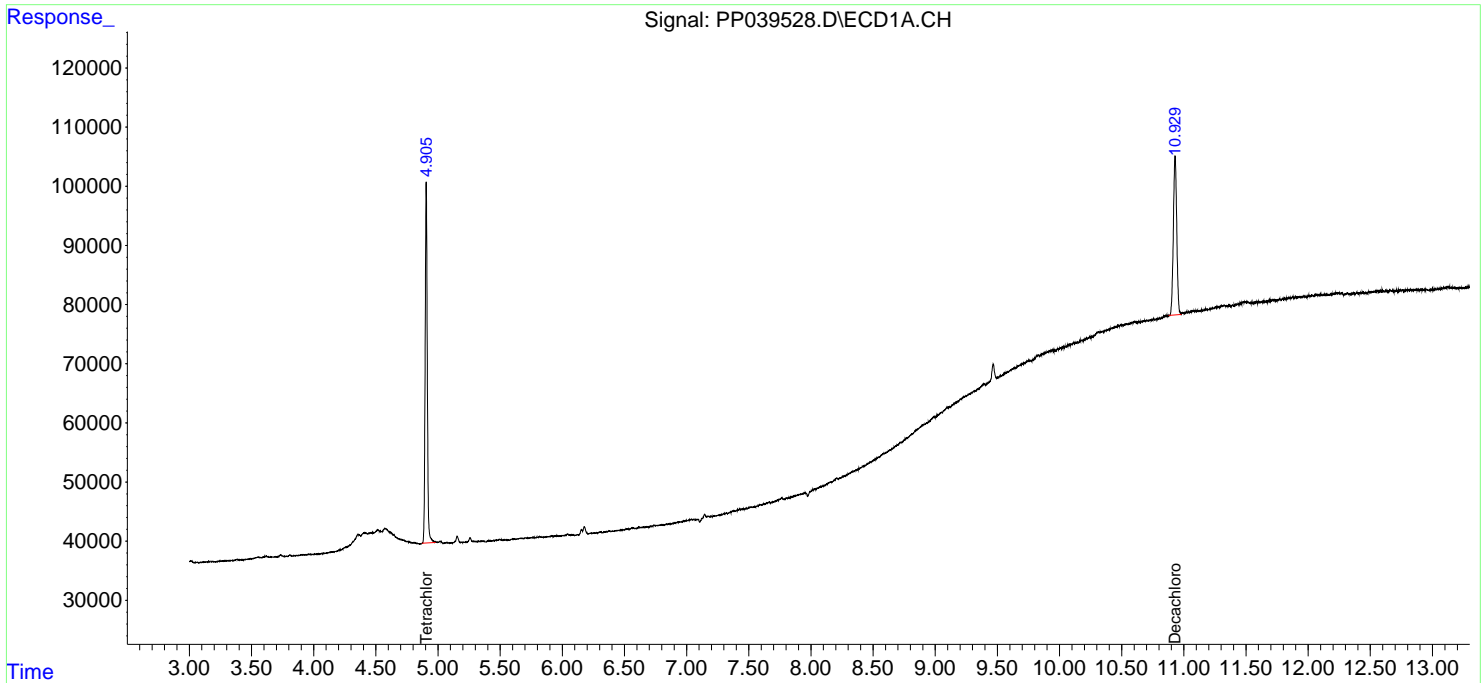
(f)=RT Delta > 1/2 Window (#)=Amounts differ by > 25% (m)=manual int.

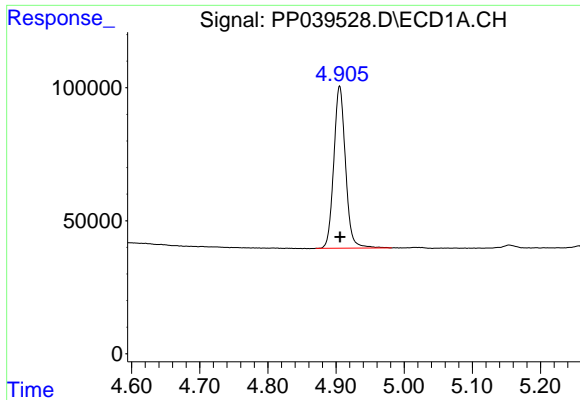
Data Path : Z:\pestpcbsrv\HPCHEM1\ECD_P\Data\PP092721\
 Data File : PP039528.D
 Signal(s) : Signal #1: ECD1A.CH Signal #2: ECD2B.CH
 Acq On : 27 Sep 2021 10:00
 Operator : AJ\MA
 Sample : I.BLK
 Misc :
 ALS Vial : 2 Sample Multiplier: 1

Instrument :
 ECD_P
ClientSampled :
 I.BLK

Integration File signal 1: autoint1.e
 Integration File signal 2: autoint2.e
 Quant Time: Sep 27 11:11:58 2021
 Quant Method : Z:\pestpcbsrv\HPCHEM1\ECD_P\methods\PP092421.M
 Quant Title : GC EXTRACTABLES
 QLast Update : Sat Sep 25 01:28:12 2021
 Response via : Initial Calibration
 Integrator: ChemStation 6890 Scale Mode: Small noise peaks clipped

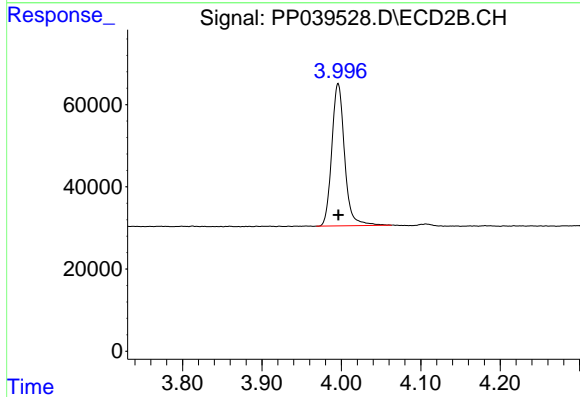
Volume Inj. : 2 µl
 Signal #1 Phase : ZB-MR1 Signal #2 Phase: ZB-MR2
 Signal #1 Info : 30Mx0.32mmx 0.50µ Signal #2 Info : 30M x 0.32mm x 0.25µm



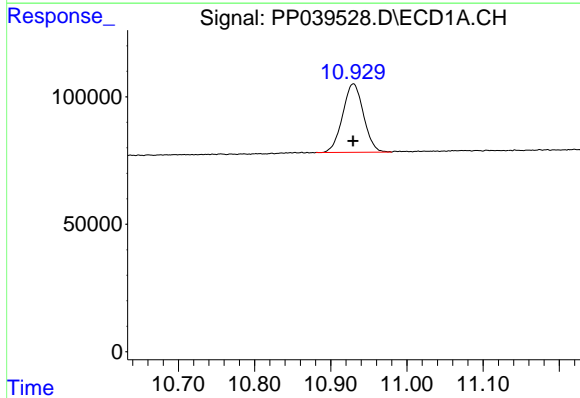


#1 Tetrachloro-m-xylene
 R.T.: 4.905 min
 Delta R.T.: 0.000 min
 Response: 727432
 Conc: 22.98 ng/ml

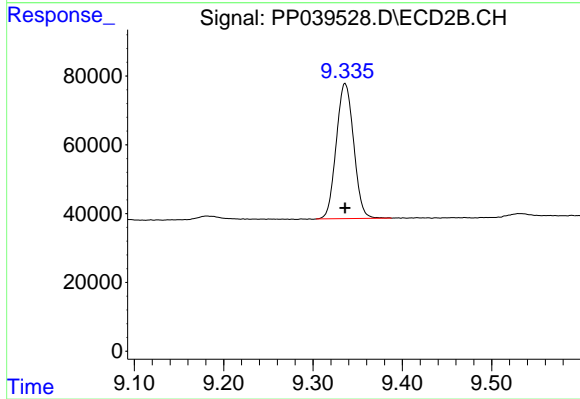
Instrument :
 ECD_P
 ClientSampleId :
 I.BLK



#1 Tetrachloro-m-xylene
 R.T.: 3.996 min
 Delta R.T.: 0.000 min
 Response: 387275
 Conc: 23.77 ng/ml



#2 Decachlorobiphenyl
 R.T.: 10.930 min
 Delta R.T.: 0.000 min
 Response: 510189
 Conc: 23.52 ng/ml



#2 Decachlorobiphenyl
 R.T.: 9.336 min
 Delta R.T.: 0.000 min
 Response: 532665
 Conc: 24.38 ng/ml