

Data Path : Z:\pestpcbsrv\HPCHEM1\ECD_P\Data\PP092722\
 Data File : PP051683.D
 Signal(s) : Signal #1: ECD1A.ch Signal #2: ECD2B.ch
 Acq On : 27 Sep 2022 11:32
 Operator : YP\AJ
 Sample : N4809-04
 Misc :
 ALS Vial : 10 Sample Multiplier: 1

Instrument :
 ECD_P
 ClientSampleId :
 TP2-0923

Integration File signal 1: autoint1.e
 Integration File signal 2: autoint2.e
 Quant Time: Sep 27 13:16:01 2022
 Quant Method : Z:\pestpcbsrv\HPCHEM1\ECD_P\methods\PP091922.M
 Quant Title : GC EXTRACTABLES
 QLast Update : Tue Sep 20 14:37:22 2022
 Response via : Initial Calibration
 Integrator: ChemStation

Volume Inj. : 2 µl
 Signal #1 Phase : ZB-MR1 Signal #2 Phase: ZB-MR2
 Signal #1 Info : 30Mx0.32mmx 0.50µ Signal #2 Info : 30M x 0.32mm x 0.25µm

Compound	RT#1	RT#2	Resp#1	Resp#2	ng/ml	ng/ml

System Monitoring Compounds						
1) SA Tetrachlo...	4.429	3.682	28087911	22655744	15.806	14.998
2) SA Decachlor...	10.252	8.778	29685744	23780099	19.208	19.846
Target Compounds						
16) L4 AR-1242-1	5.603	4.785	12908153	9814971	243.911	226.951
17) L4 AR-1242-2	5.625	4.805	21014477	15329781	281.423	253.900
18) L4 AR-1242-3	5.689	4.985	9886644	8278609	208.876	258.593
19) L4 AR-1242-4	5.787	5.069	9815664	10813490	267.119	332.568
20) L4 AR-1242-5	6.528	5.600	11535225	14752713	323.500	388.482
31) L7 AR-1260-1	7.216	6.291	10611433	10850700	113.668	145.425 #
32) L7 AR-1260-2	7.473	6.479	16056642	13323556	152.077	150.689
33) L7 AR-1260-3	7.834	6.636	7617170	9328616	98.610	109.994
34) L7 AR-1260-4	8.060	7.113	10969115	5971769	123.609	89.071 #
35) L7 AR-1260-5	8.385	7.356	16191676	14463842	105.246	97.899

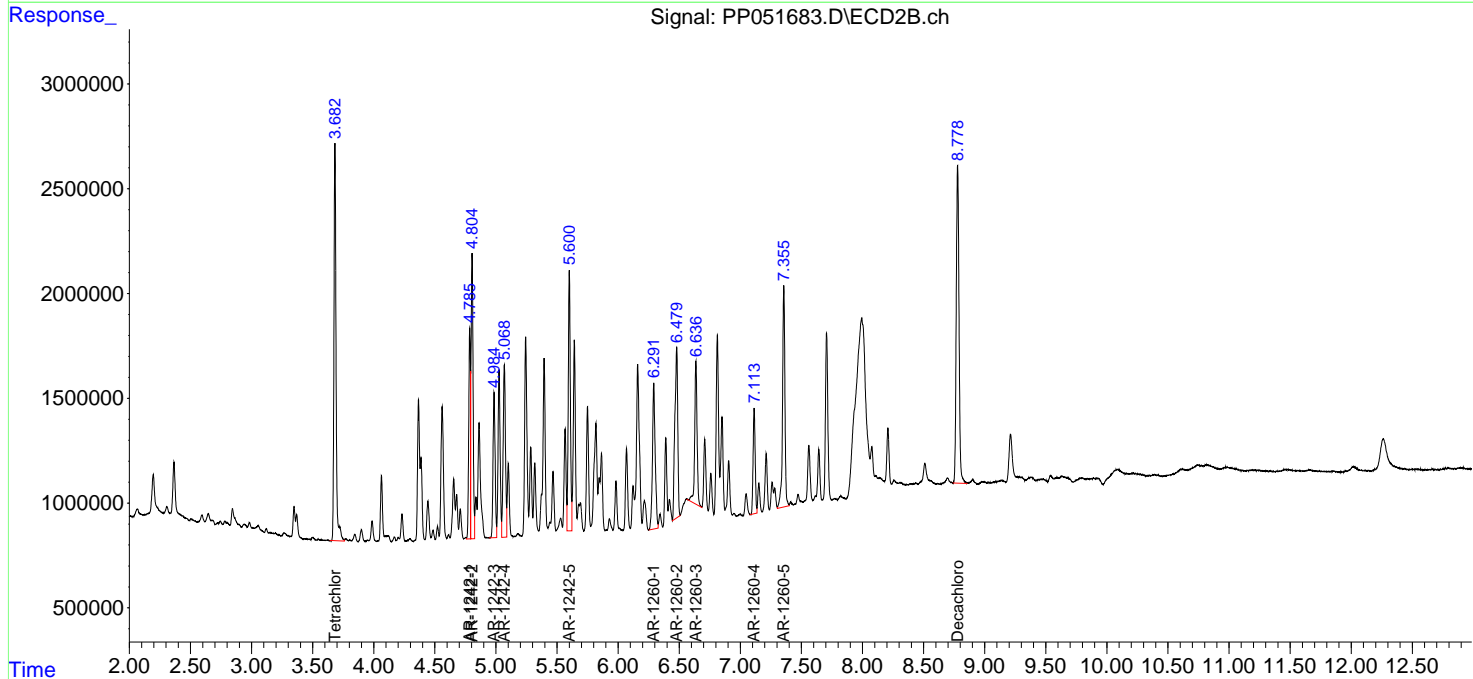
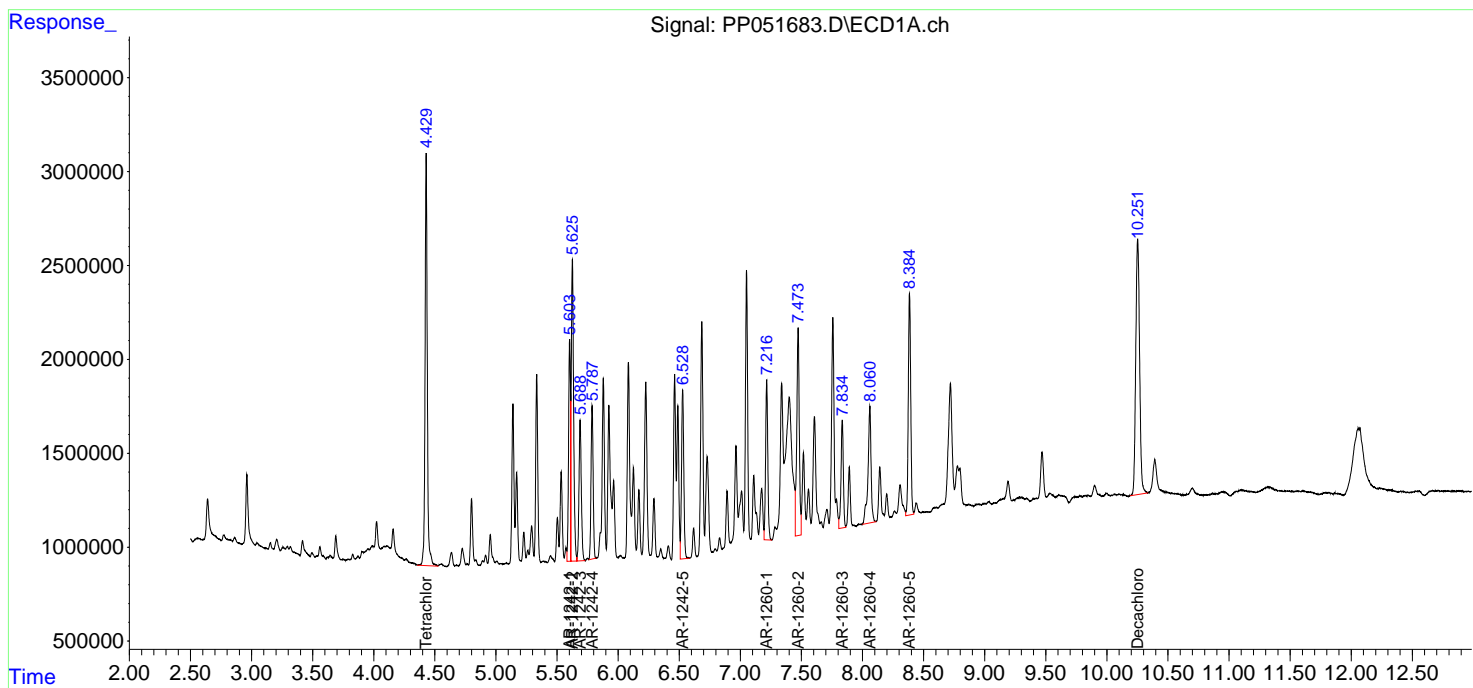
(f)=RT Delta > 1/2 Window (#)=Amounts differ by > 25% (m)=manual int.

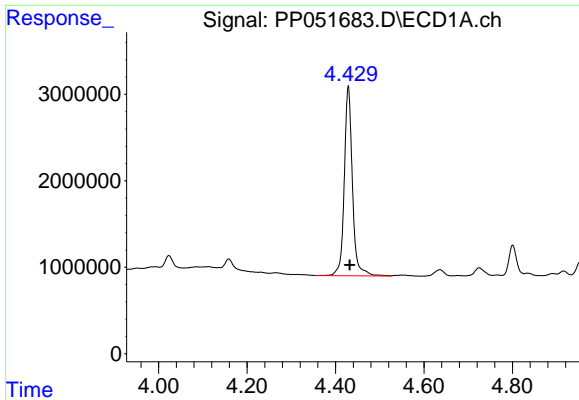
Data Path : Z:\pestpcbsrv\HPCHEM1\ECD_P\Data\PP092722\
 Data File : PP051683.D
 Signal(s) : Signal #1: ECD1A.ch Signal #2: ECD2B.ch
 Acq On : 27 Sep 2022 11:32
 Operator : YP\AJ
 Sample : N4809-04
 Misc :
 ALS Vial : 10 Sample Multiplier: 1

Instrument :
 ECD_P
 ClientSampleId :
 TP2-0923

Integration File signal 1: autoint1.e
 Integration File signal 2: autoint2.e
 Quant Time: Sep 27 13:16:01 2022
 Quant Method : Z:\pestpcbsrv\HPCHEM1\ECD_P\methods\PP091922.M
 Quant Title : GC EXTRACTABLES
 QLast Update : Tue Sep 20 14:37:22 2022
 Response via : Initial Calibration
 Integrator: ChemStation

Volume Inj. : 2 µl
 Signal #1 Phase : ZB-MR1 Signal #2 Phase: ZB-MR2
 Signal #1 Info : 30Mx0.32mmx 0.50µ Signal #2 Info : 30M x 0.32mm x 0.25µm

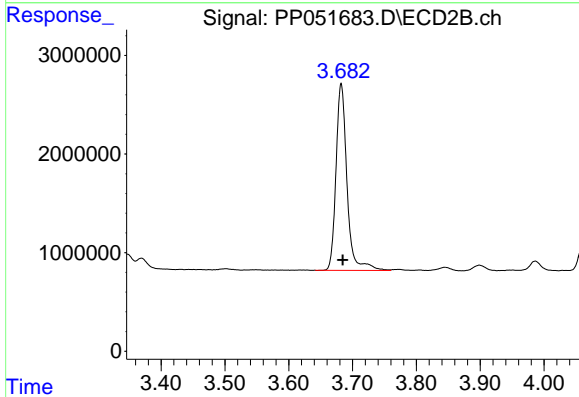




#1 Tetrachloro-m-xylene

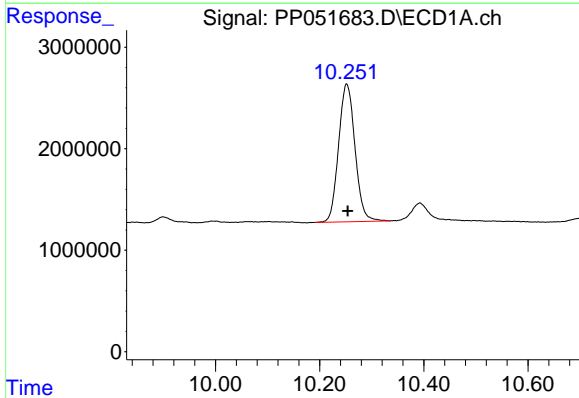
R.T.: 4.429 min
 Delta R.T.: -0.003 min
 Response: 28087911
 Conc: 15.81 ng/ml

Instrument :
 ECD_P
 ClientSampleId :
 TP2-0923



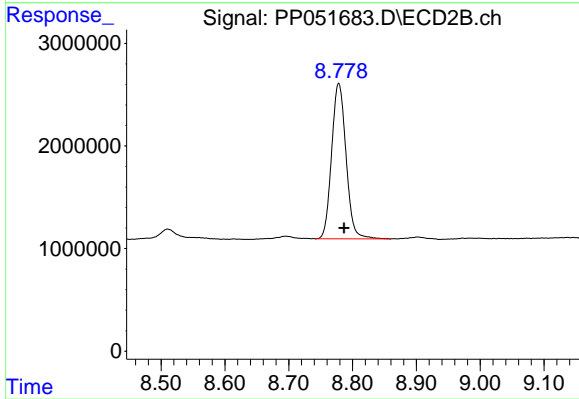
#1 Tetrachloro-m-xylene

R.T.: 3.682 min
 Delta R.T.: -0.002 min
 Response: 22655744
 Conc: 15.00 ng/ml



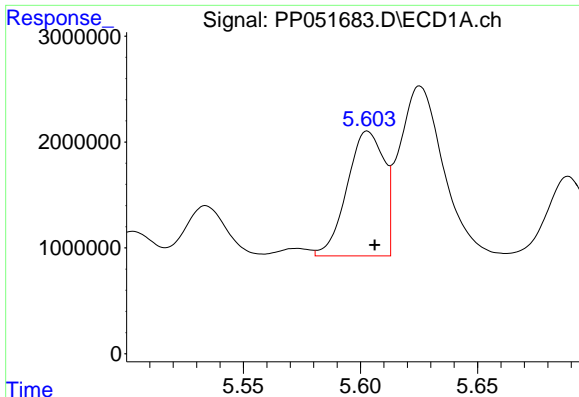
#2 Decachlorobiphenyl

R.T.: 10.252 min
 Delta R.T.: -0.002 min
 Response: 29685744
 Conc: 19.21 ng/ml



#2 Decachlorobiphenyl

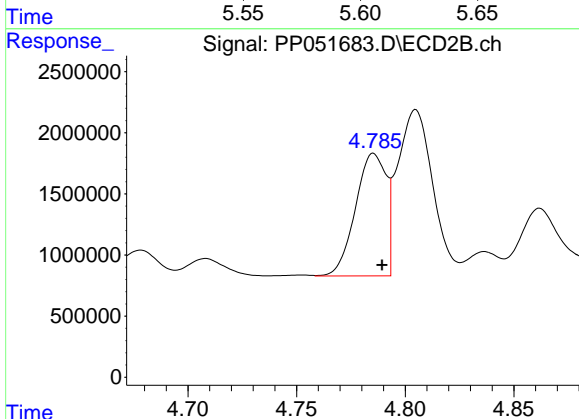
R.T.: 8.778 min
 Delta R.T.: -0.009 min
 Response: 23780099
 Conc: 19.85 ng/ml



#16 AR-1242-1

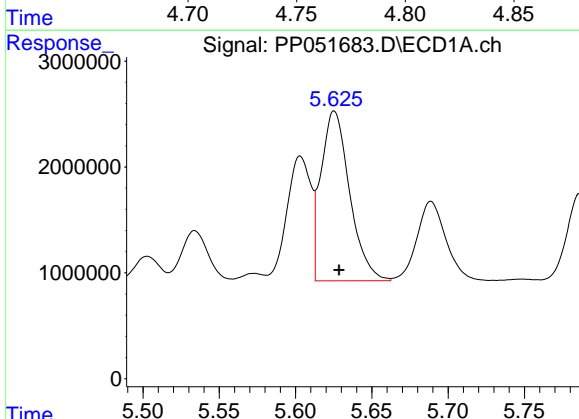
R.T.: 5.603 min
 Delta R.T.: -0.003 min
 Response: 12908153
 Conc: 243.91 ng/ml

Instrument :
 ECD_P
 ClientSampleId :
 TP2-0923



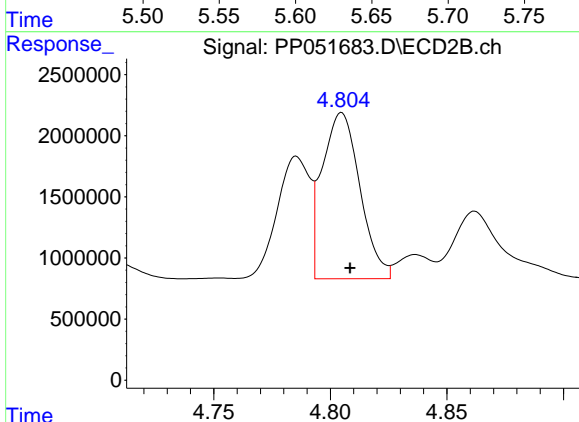
#16 AR-1242-1

R.T.: 4.785 min
 Delta R.T.: -0.004 min
 Response: 9814971
 Conc: 226.95 ng/ml



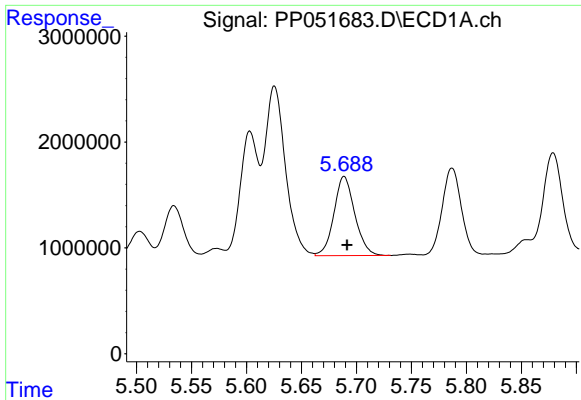
#17 AR-1242-2

R.T.: 5.625 min
 Delta R.T.: -0.003 min
 Response: 21014477
 Conc: 281.42 ng/ml



#17 AR-1242-2

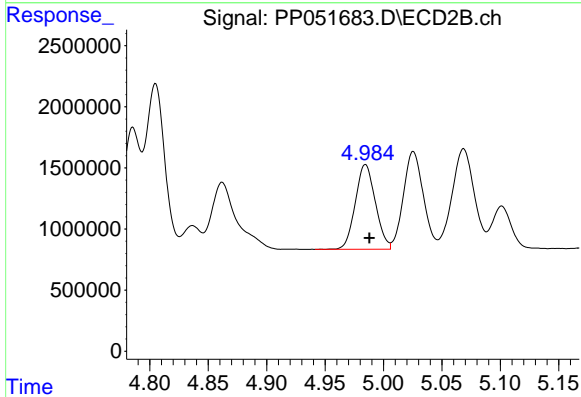
R.T.: 4.805 min
 Delta R.T.: -0.004 min
 Response: 15329781
 Conc: 253.90 ng/ml



#18 AR-1242-3

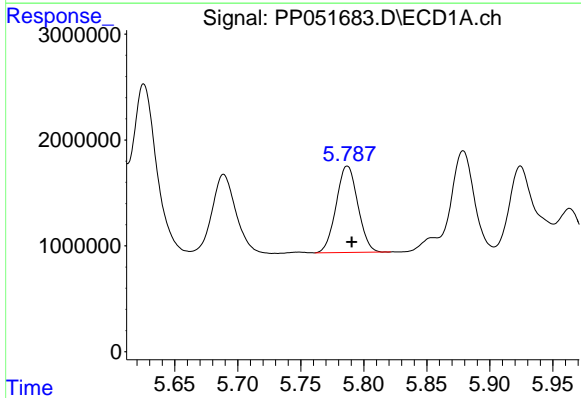
R.T.: 5.689 min
 Delta R.T.: -0.003 min
 Response: 9886644
 Conc: 208.88 ng/ml

Instrument :
 ECD_P
 ClientSampleId :
 TP2-0923



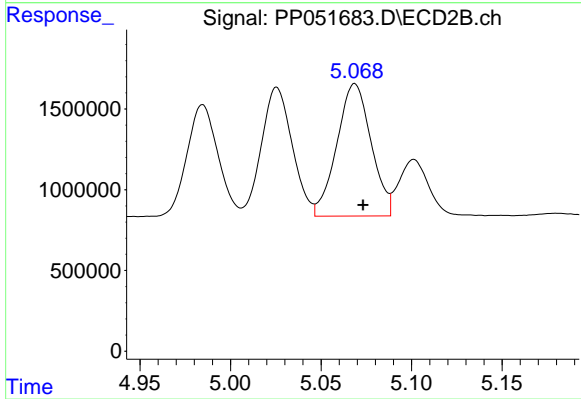
#18 AR-1242-3

R.T.: 4.985 min
 Delta R.T.: -0.003 min
 Response: 8278609
 Conc: 258.59 ng/ml



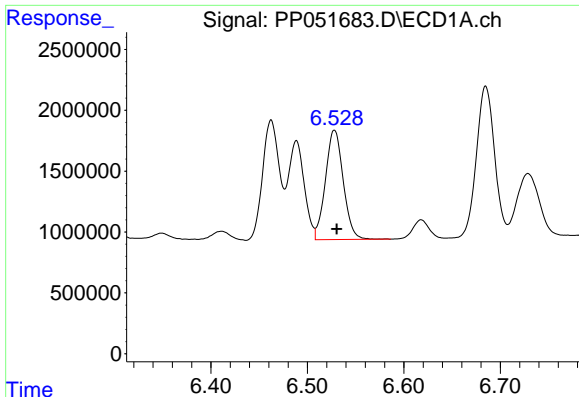
#19 AR-1242-4

R.T.: 5.787 min
 Delta R.T.: -0.004 min
 Response: 9815664
 Conc: 267.12 ng/ml



#19 AR-1242-4

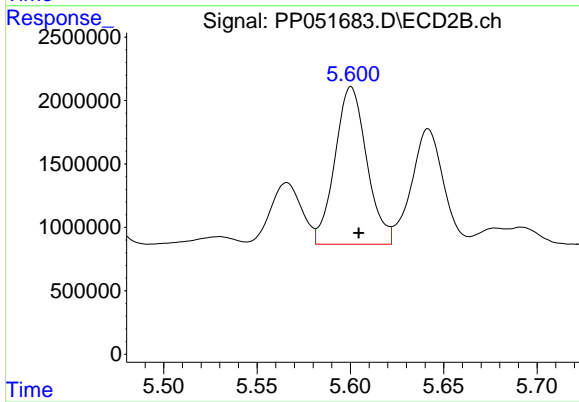
R.T.: 5.069 min
 Delta R.T.: -0.004 min
 Response: 10813490
 Conc: 332.57 ng/ml



#20 AR-1242-5

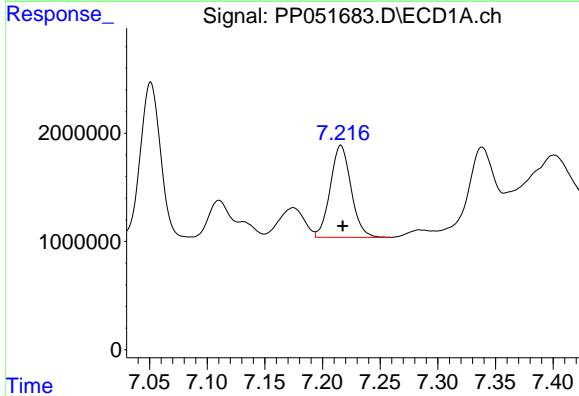
R.T.: 6.528 min
 Delta R.T.: -0.002 min
 Response: 11535225
 Conc: 323.50 ng/ml

Instrument :
 ECD_P
 ClientSampleId :
 TP2-0923



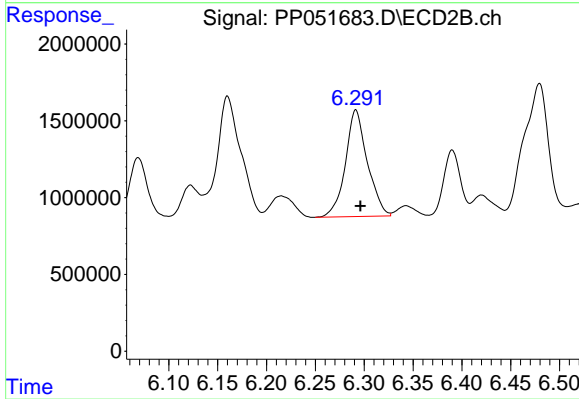
#20 AR-1242-5

R.T.: 5.600 min
 Delta R.T.: -0.004 min
 Response: 14752713
 Conc: 388.48 ng/ml



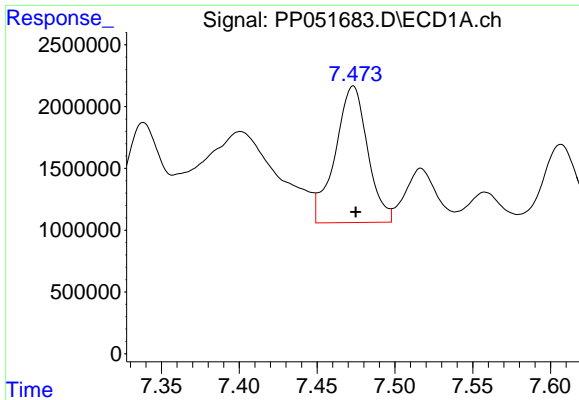
#31 AR-1260-1

R.T.: 7.216 min
 Delta R.T.: -0.002 min
 Response: 10611433
 Conc: 113.67 ng/ml



#31 AR-1260-1

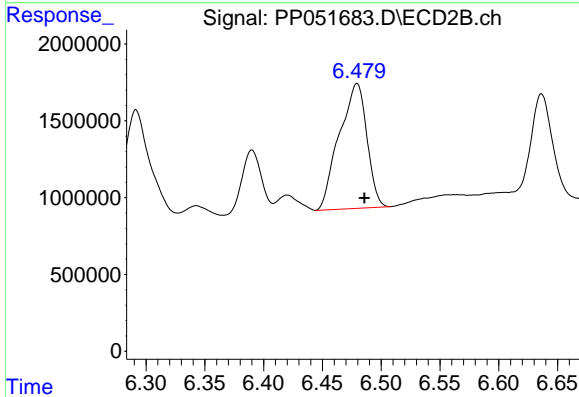
R.T.: 6.291 min
 Delta R.T.: -0.005 min
 Response: 10850700
 Conc: 145.42 ng/ml



#32 AR-1260-2

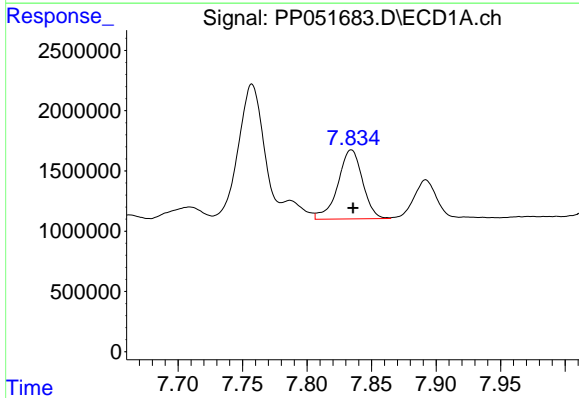
R.T.: 7.473 min
 Delta R.T.: -0.002 min
 Response: 16056642
 Conc: 152.08 ng/ml

Instrument :
 ECD_P
 ClientSampleId :
 TP2-0923



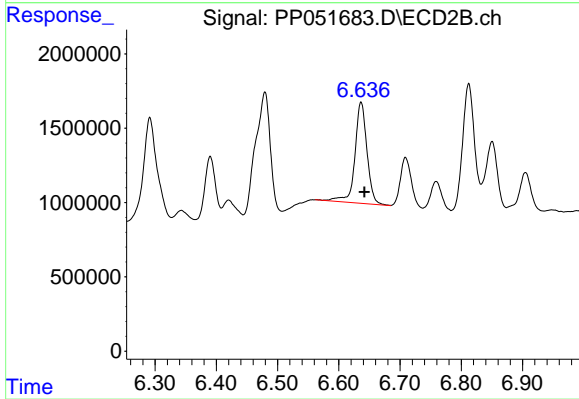
#32 AR-1260-2

R.T.: 6.479 min
 Delta R.T.: -0.006 min
 Response: 13323556
 Conc: 150.69 ng/ml



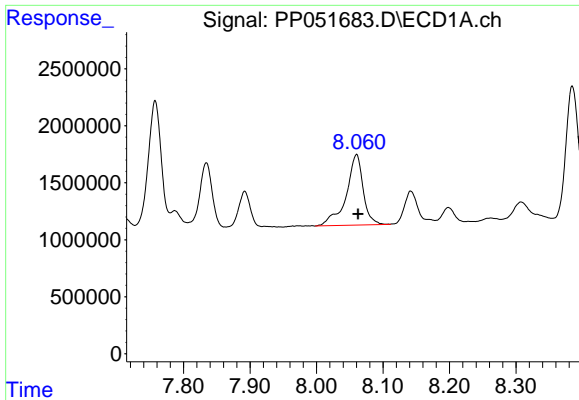
#33 AR-1260-3

R.T.: 7.834 min
 Delta R.T.: -0.001 min
 Response: 7617170
 Conc: 98.61 ng/ml



#33 AR-1260-3

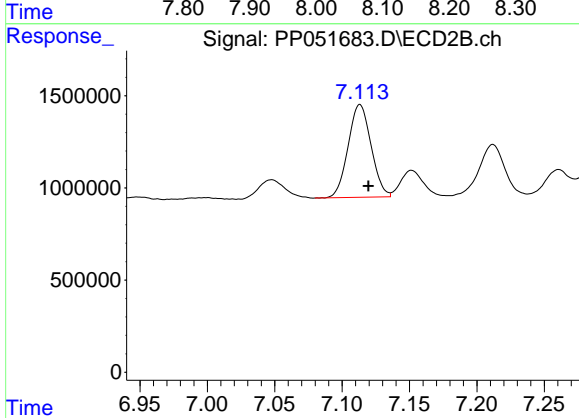
R.T.: 6.636 min
 Delta R.T.: -0.006 min
 Response: 9328616
 Conc: 109.99 ng/ml



#34 AR-1260-4

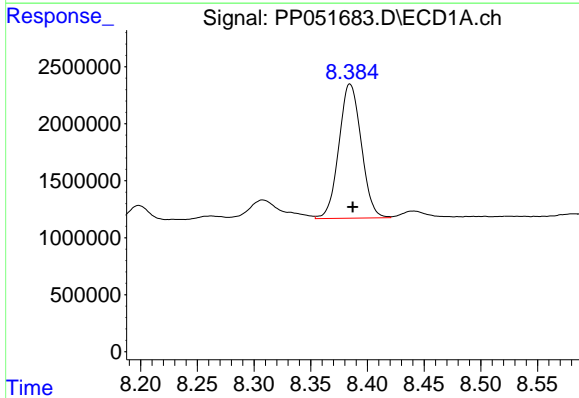
R.T.: 8.060 min
Delta R.T.: -0.003 min
Response: 10969115
Conc: 123.61 ng/ml

Instrument :
ECD_P
ClientSampleId :
TP2-0923



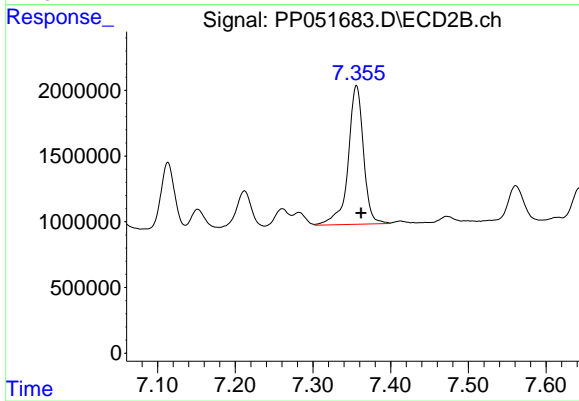
#34 AR-1260-4

R.T.: 7.113 min
Delta R.T.: -0.006 min
Response: 5971769
Conc: 89.07 ng/ml



#35 AR-1260-5

R.T.: 8.385 min
Delta R.T.: -0.002 min
Response: 16191676
Conc: 105.25 ng/ml



#35 AR-1260-5

R.T.: 7.356 min
Delta R.T.: -0.006 min
Response: 14463842
Conc: 97.90 ng/ml