

Data Path : Z:\pestpcbsrv\HPCHEM1\ECD_P\Data\PP092722\
 Data File : PP051710.D
 Signal(s) : Signal #1: ECD1A.ch Signal #2: ECD2B.ch
 Acq On : 27 Sep 2022 21:11
 Operator : YP\AJ
 Sample : AR1268CCC500
 Misc :
 ALS Vial : 7 Sample Multiplier: 1

Instrument :
 ECD_P
 ClientSampleId :
 AR1268CCC500

Integration File signal 1: autoint1.e
 Integration File signal 2: autoint2.e
 Quant Time: Sep 28 06:11:00 2022
 Quant Method : Z:\pestpcbsrv\HPCHEM1\ECD_P\methods\PP091922.M
 Quant Title : GC EXTRACTABLES
 QLast Update : Tue Sep 20 14:37:22 2022
 Response via : Initial Calibration
 Integrator: ChemStation

Volume Inj. : 2 µl
 Signal #1 Phase : ZB-MR1 Signal #2 Phase: ZB-MR2
 Signal #1 Info : 30Mx0.32mmx 0.50µ Signal #2 Info : 30M x 0.32mm x 0.25µm

Compound	RT#1	RT#2	Resp#1	Resp#2	ng/ml	ng/ml

System Monitoring Compounds						
1) SA Tetrachlo...	4.429	3.681	85553570	74312680	48.143	49.196
2) SA Decachlor...	10.252	8.779	110.1E6	101.4E6	71.273	84.600
Target Compounds						
41) L9 AR-1268-1	8.704	7.643	90995324	88728876	451.744	470.695
42) L9 AR-1268-2	8.799	7.708	83790212	80106745	456.685	478.288
43) L9 AR-1268-3	9.034	7.918	71046617	68161973	440.308	475.870
44) L9 AR-1268-4	9.471	8.209	32142263	27723744	458.311	489.255
45) L9 AR-1268-5	9.900	8.512	220.0E6	207.1E6	446.646	484.346

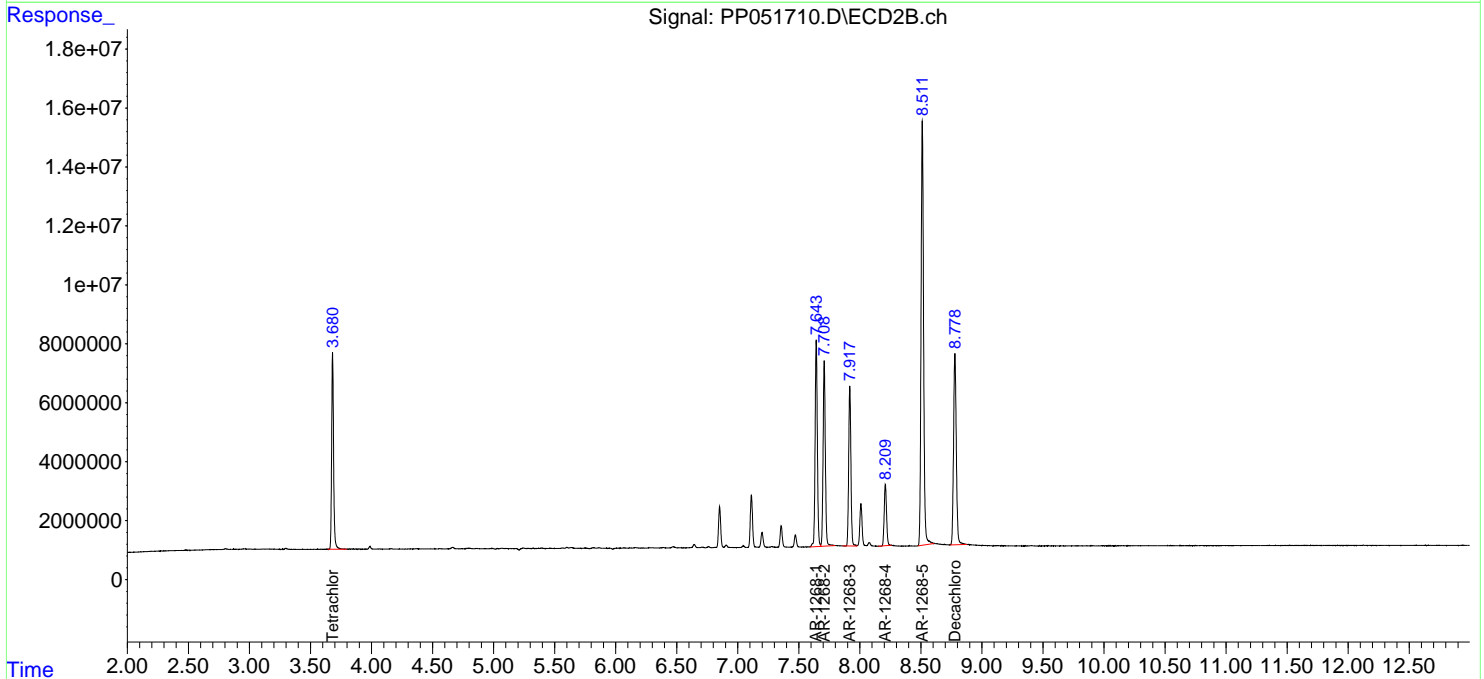
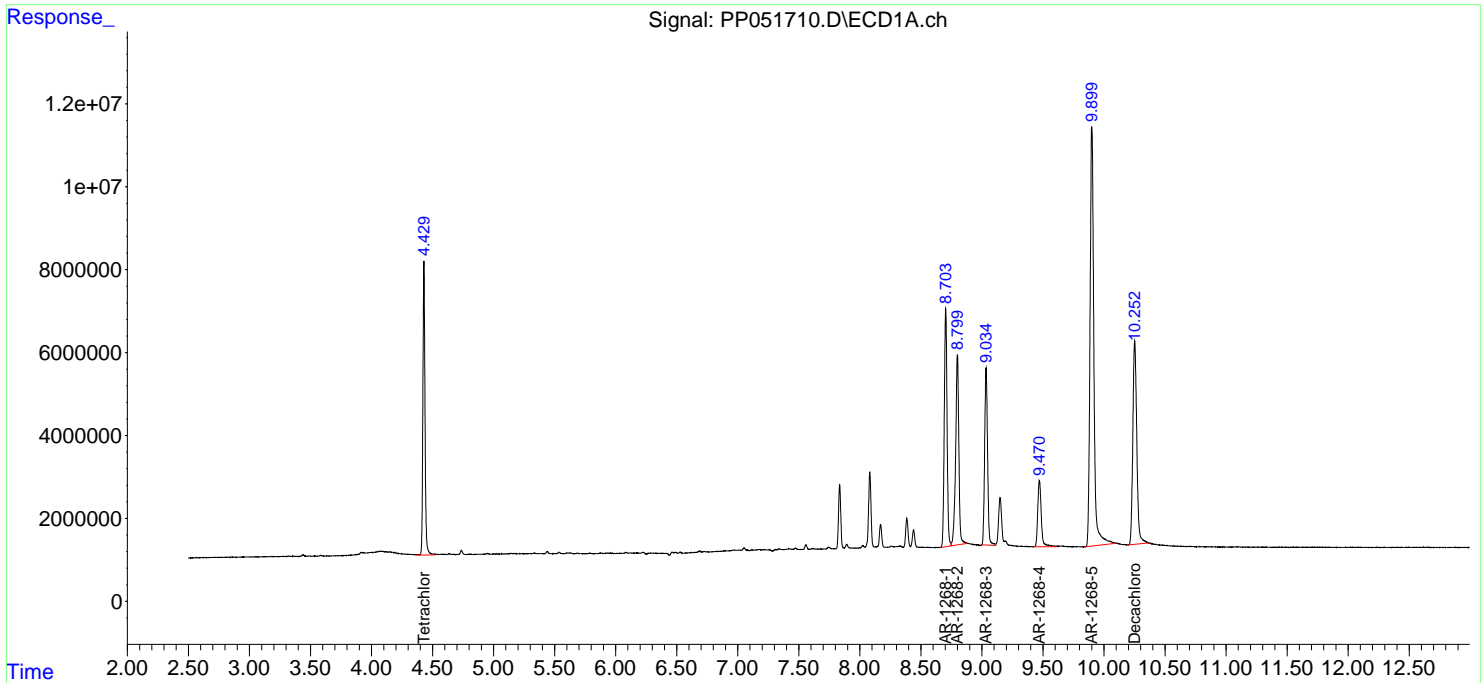
(f)=RT Delta > 1/2 Window (#)=Amounts differ by > 25% (m)=manual int.

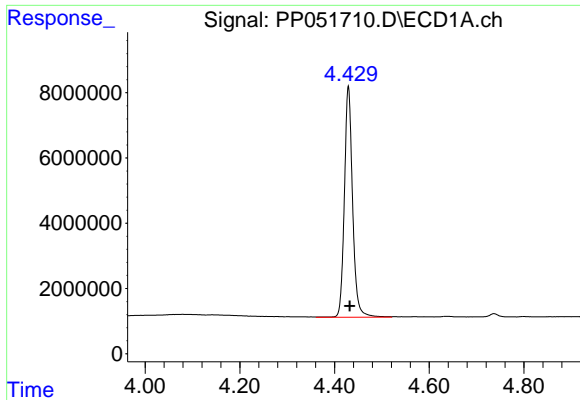
Data Path : Z:\pestpcbsrv\HPCHEM1\ECD_P\Data\PP092722\
 Data File : PP051710.D
 Signal(s) : Signal #1: ECD1A.ch Signal #2: ECD2B.ch
 Acq On : 27 Sep 2022 21:11
 Operator : YP\AJ
 Sample : AR1268CCC500
 Misc :
 ALS Vial : 7 Sample Multiplier: 1

Instrument :
 ECD_P
 ClientSampleId :
 AR1268CCC500

Integration File signal 1: autoint1.e
 Integration File signal 2: autoint2.e
 Quant Time: Sep 28 06:11:00 2022
 Quant Method : Z:\pestpcbsrv\HPCHEM1\ECD_P\methods\PP091922.M
 Quant Title : GC EXTRACTABLES
 QLast Update : Tue Sep 20 14:37:22 2022
 Response via : Initial Calibration
 Integrator: ChemStation

Volume Inj. : 2 µl
 Signal #1 Phase : ZB-MR1 Signal #2 Phase: ZB-MR2
 Signal #1 Info : 30Mx0.32mmx 0.50µ Signal #2 Info : 30M x 0.32mm x 0.25µm

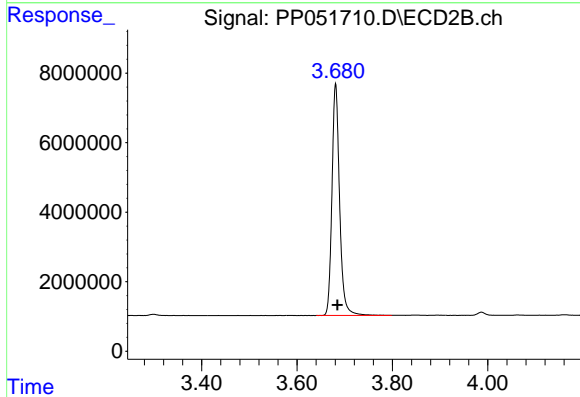




#1 Tetrachloro-m-xylene

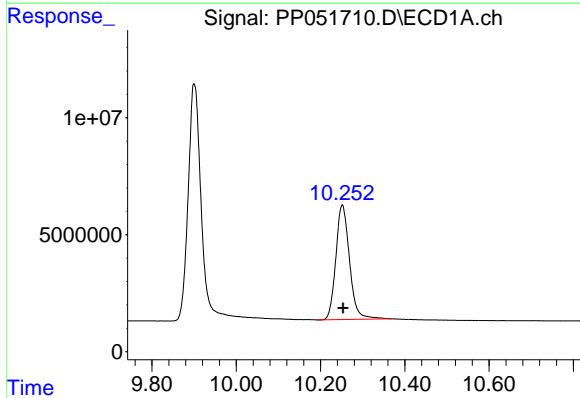
R.T.: 4.429 min
 Delta R.T.: -0.003 min
 Response: 85553570
 Conc: 48.14 ng/ml

Instrument :
 ECD_P
 ClientSampleId :
 AR1268CCC500



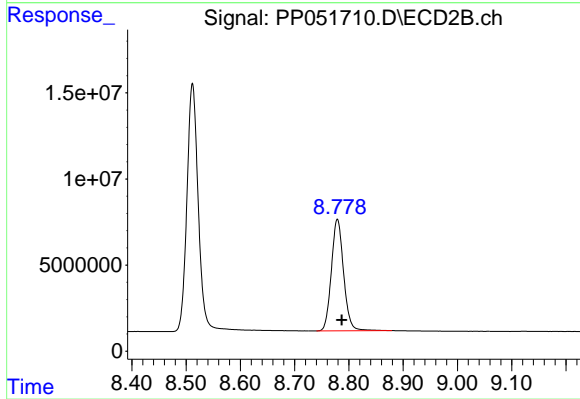
#1 Tetrachloro-m-xylene

R.T.: 3.681 min
 Delta R.T.: -0.004 min
 Response: 74312680
 Conc: 49.20 ng/ml



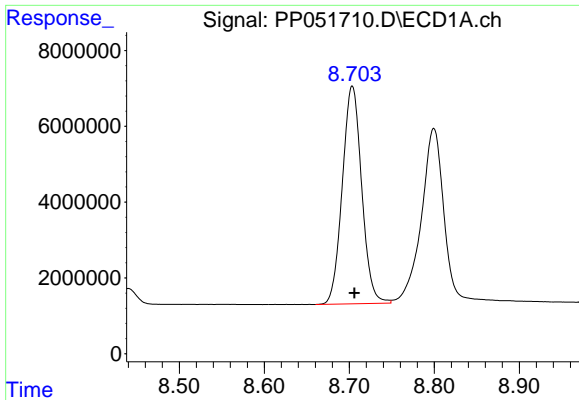
#2 Decachlorobiphenyl

R.T.: 10.252 min
 Delta R.T.: -0.002 min
 Response: 110149599
 Conc: 71.27 ng/ml



#2 Decachlorobiphenyl

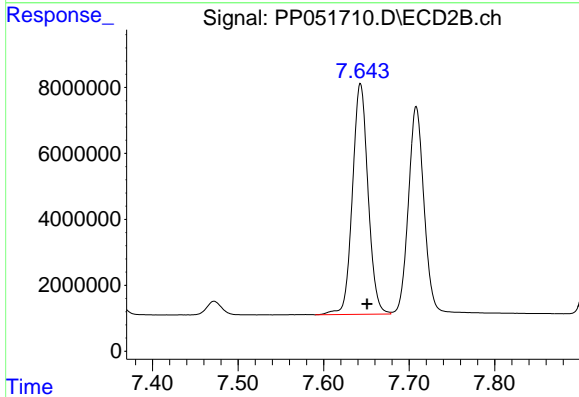
R.T.: 8.779 min
 Delta R.T.: -0.008 min
 Response: 101368644
 Conc: 84.60 ng/ml



#41 AR-1268-1

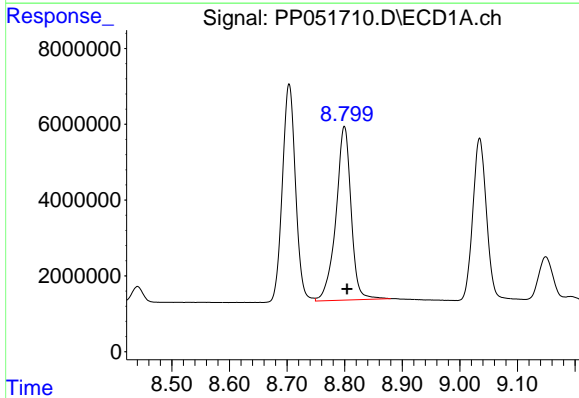
R.T.: 8.704 min
 Delta R.T.: -0.003 min
 Response: 90995324
 Conc: 451.74 ng/ml

Instrument :
 ECD_P
 ClientSampleId :
 AR1268CCC500



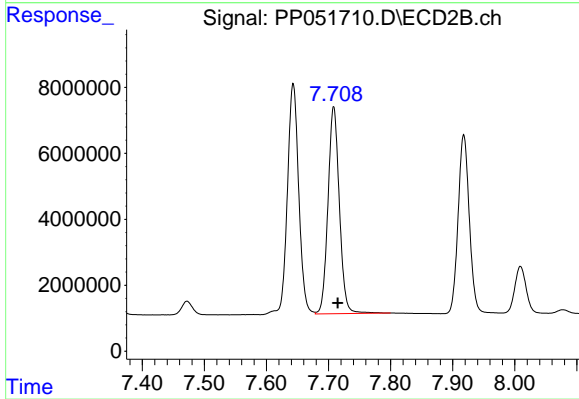
#41 AR-1268-1

R.T.: 7.643 min
 Delta R.T.: -0.008 min
 Response: 88728876
 Conc: 470.70 ng/ml



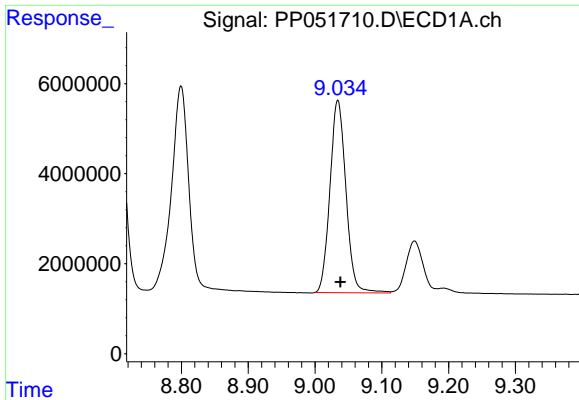
#42 AR-1268-2

R.T.: 8.799 min
 Delta R.T.: -0.005 min
 Response: 83790212
 Conc: 456.69 ng/ml



#42 AR-1268-2

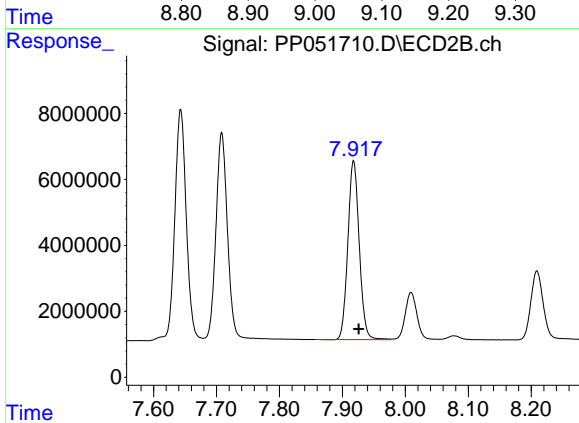
R.T.: 7.708 min
 Delta R.T.: -0.007 min
 Response: 80106745
 Conc: 478.29 ng/ml



#43 AR-1268-3

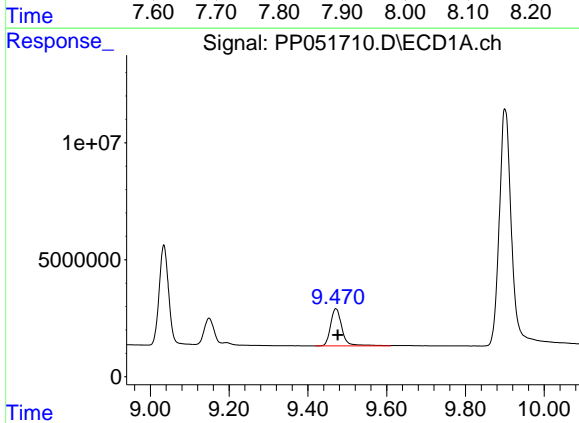
R.T.: 9.034 min
 Delta R.T.: -0.004 min
 Response: 71046617
 Conc: 440.31 ng/ml

Instrument :
 ECD_P
 ClientSampleId :
 AR1268CCC500



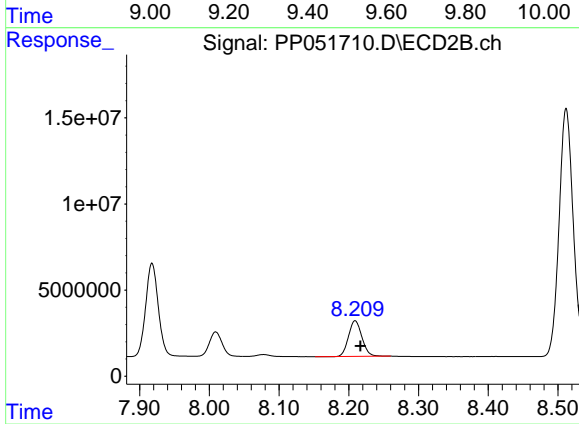
#43 AR-1268-3

R.T.: 7.918 min
 Delta R.T.: -0.008 min
 Response: 68161973
 Conc: 475.87 ng/ml



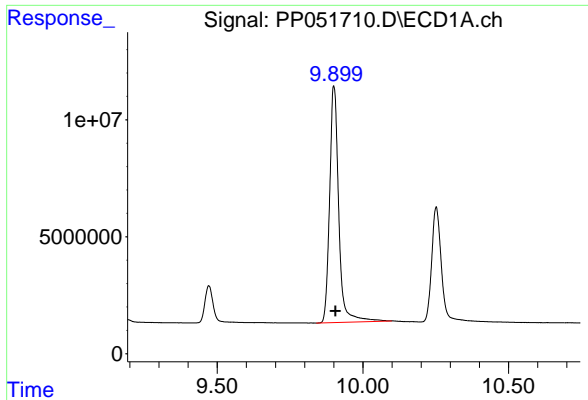
#44 AR-1268-4

R.T.: 9.471 min
 Delta R.T.: -0.005 min
 Response: 32142263
 Conc: 458.31 ng/ml



#44 AR-1268-4

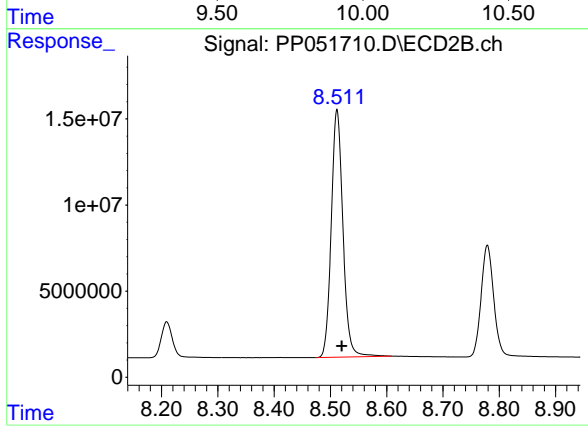
R.T.: 8.209 min
 Delta R.T.: -0.008 min
 Response: 27723744
 Conc: 489.25 ng/ml



#45 AR-1268-5

R.T.: 9.900 min
Delta R.T.: -0.005 min
Response: 220004159
Conc: 446.65 ng/ml

Instrument :
ECD_P
ClientSampleId :
AR1268CCC500



#45 AR-1268-5

R.T.: 8.512 min
Delta R.T.: -0.008 min
Response: 207132205
Conc: 484.35 ng/ml