

Data Path : Z:\pestpcbsrv\HPCHEM1\ECD_P\Data\PP092722\
 Data File : PP051734.D
 Signal(s) : Signal #1: ECD1A.ch Signal #2: ECD2B.ch
 Acq On : 28 Sep 2022 04:19
 Operator : YP\AJ
 Sample : N4823-03
 Misc :
 ALS Vial : 43 Sample Multiplier: 1

Instrument :
 ECD_P
 ClientSampleId :
 JEFFERSON-ST

Integration File signal 1: autoint1.e
 Integration File signal 2: autoint2.e
 Quant Time: Sep 28 06:25:21 2022
 Quant Method : Z:\pestpcbsrv\HPCHEM1\ECD_P\methods\PP091922.M
 Quant Title : GC EXTRACTABLES
 QLast Update : Tue Sep 20 14:37:22 2022
 Response via : Initial Calibration
 Integrator: ChemStation

Volume Inj. : 2 µl
 Signal #1 Phase : ZB-MR1 Signal #2 Phase: ZB-MR2
 Signal #1 Info : 30Mx0.32mmx 0.50µ Signal #2 Info : 30M x 0.32mm x 0.25µm

Compound	RT#1	RT#2	Resp#1	Resp#2	ng/ml	ng/ml

System Monitoring Compounds						
1) SA Tetrachlo...	4.427	3.679	37650255	32279540	21.187	21.369
2) SA Decachlor...	10.250	8.776	32316836	27103905	20.911	22.620

Target Compounds

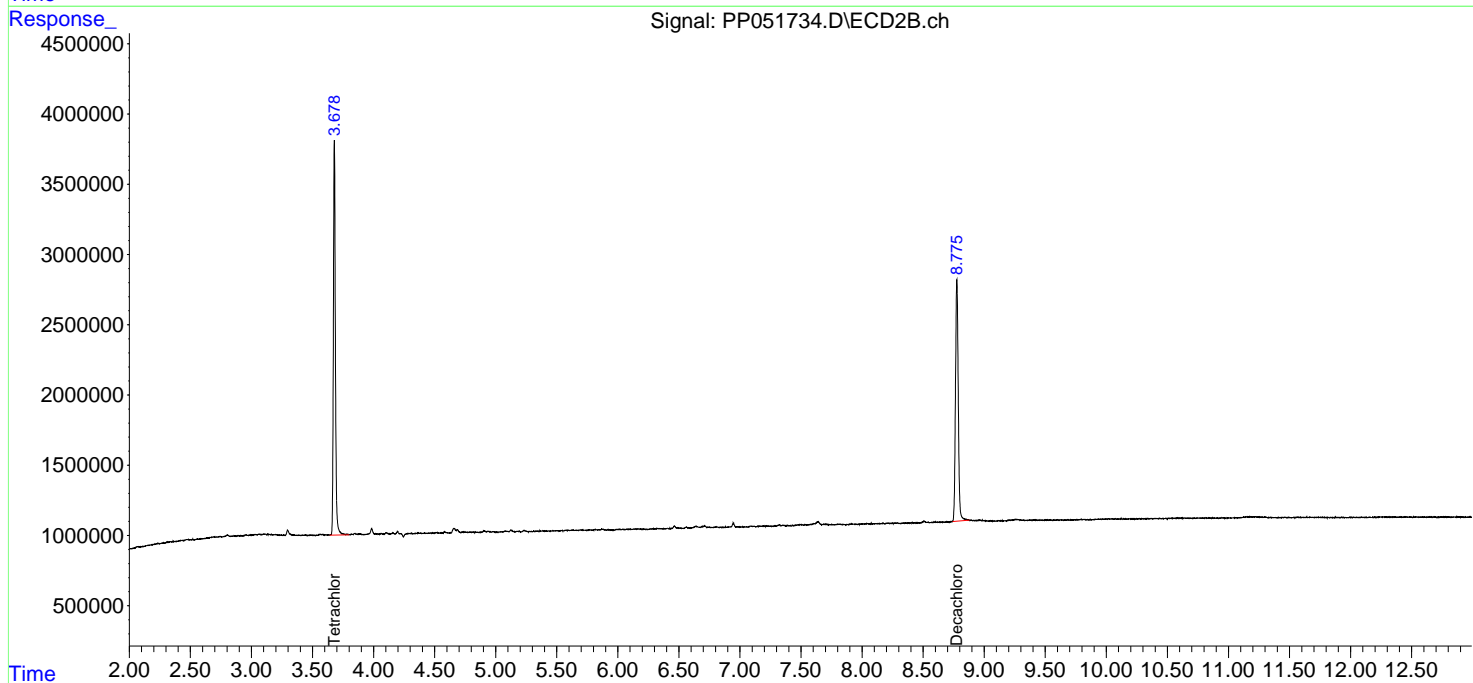
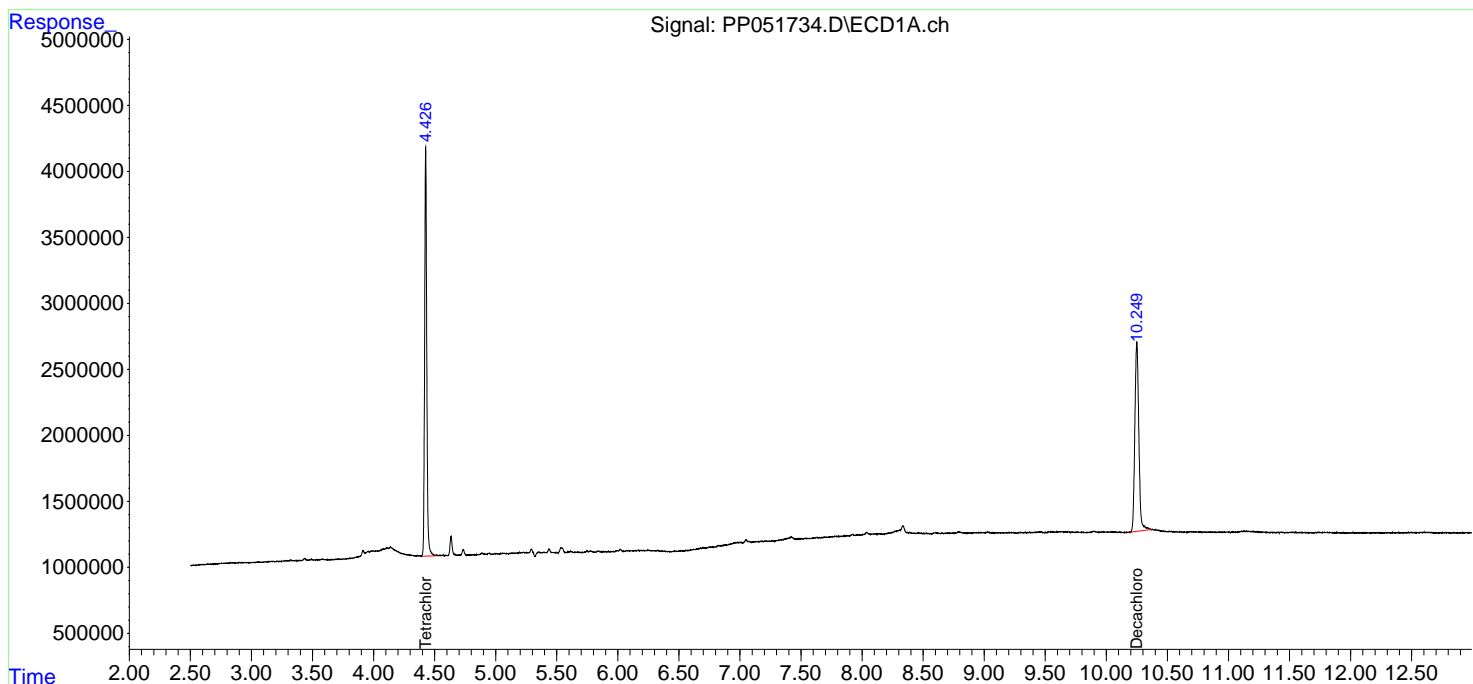
 (f)=RT Delta > 1/2 Window (#)=Amounts differ by > 25% (m)=manual int.

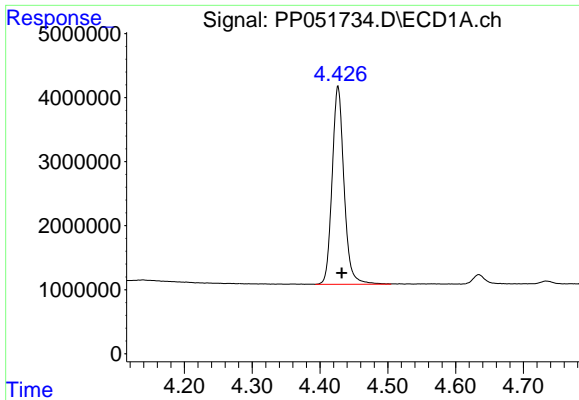
Data Path : Z:\pestpcbsrv\HPCHEM1\ECD_P\Data\PP092722\
 Data File : PP051734.D
 Signal(s) : Signal #1: ECD1A.ch Signal #2: ECD2B.ch
 Acq On : 28 Sep 2022 04:19
 Operator : YP\AJ
 Sample : N4823-03
 Misc :
 ALS Vial : 43 Sample Multiplier: 1

Instrument :
 ECD_P
 ClientSampleId :
 JEFFERSON-ST

Integration File signal 1: autoint1.e
 Integration File signal 2: autoint2.e
 Quant Time: Sep 28 06:25:21 2022
 Quant Method : Z:\pestpcbsrv\HPCHEM1\ECD_P\methods\PP091922.M
 Quant Title : GC EXTRACTABLES
 QLast Update : Tue Sep 20 14:37:22 2022
 Response via : Initial Calibration
 Integrator: ChemStation

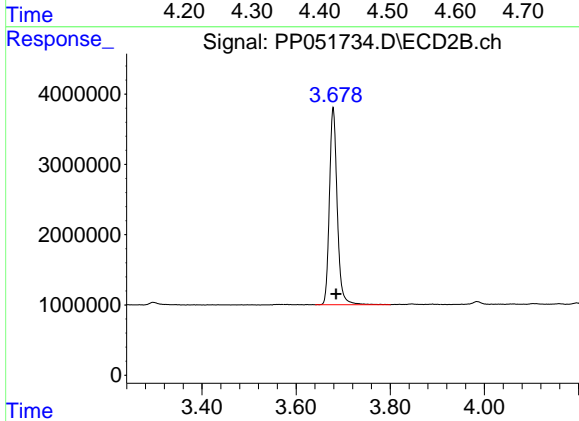
Volume Inj. : 2 µl
 Signal #1 Phase : ZB-MR1 Signal #2 Phase: ZB-MR2
 Signal #1 Info : 30Mx0.32mmx 0.50µ Signal #2 Info : 30M x 0.32mm x 0.25µm



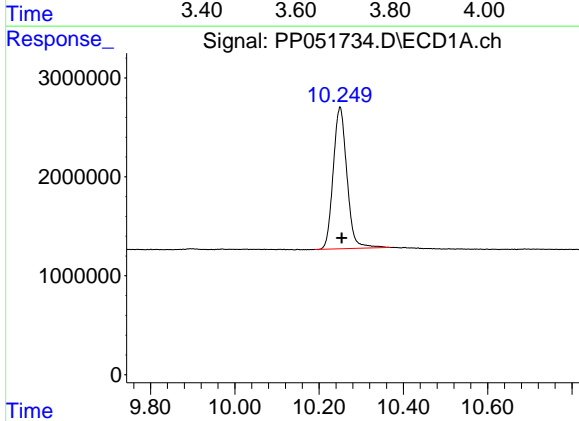


#1 Tetrachloro-m-xylene
 R.T.: 4.427 min
 Delta R.T.: -0.005 min
 Response: 37650255
 Conc: 21.19 ng/ml

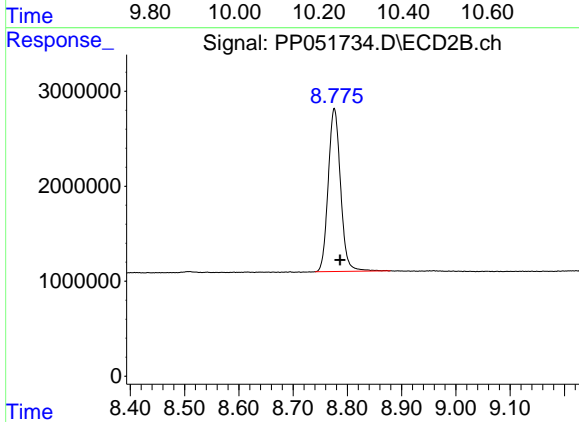
Instrument :
 ECD_P
 ClientSampleId :
 JEFFERSON-ST



#1 Tetrachloro-m-xylene
 R.T.: 3.679 min
 Delta R.T.: -0.006 min
 Response: 32279540
 Conc: 21.37 ng/ml



#2 Decachlorobiphenyl
 R.T.: 10.250 min
 Delta R.T.: -0.004 min
 Response: 32316836
 Conc: 20.91 ng/ml



#2 Decachlorobiphenyl
 R.T.: 8.776 min
 Delta R.T.: -0.011 min
 Response: 27103905
 Conc: 22.62 ng/ml