

Data Path : Z:\pestpcbsrv\HPCHEM1\ECD_P\Data\PP092821\
 Data File : PP039585.D
 Signal(s) : Signal #1: ECD1A.CH Signal #2: ECD2B.CH
 Acq On : 28 Sep 2021 17:44
 Operator : AJ\MA
 Sample : M3957-02 10X
 Misc :
 ALS Vial : 15 Sample Multiplier: 1

Instrument :
 ECD_P
 ClientSampleId :
 HED760-2-(1-2)

Integration File signal 1: autoint1.e
 Integration File signal 2: autoint2.e
 Quant Time: Sep 29 02:13:04 2021
 Quant Method : Z:\pestpcbsrv\HPCHEM1\ECD_P\methods\PP092421.M
 Quant Title : GC EXTRACTABLES
 QLast Update : Sat Sep 25 01:28:12 2021
 Response via : Initial Calibration
 Integrator: ChemStation 6890 Scale Mode: Small noise peaks clipped

Volume Inj. : 2 µl
 Signal #1 Phase : ZB-MR2 Signal #2 Phase: ZB-MR2
 Signal #1 Info : 30Mx0.32mmx 0.50µ Signal #2 Info : 30M x 0.32mm x 0.25µm

	Compound	RT#1	RT#2	Resp#1	Resp#2	ng/ml	ng/ml

System Monitoring Compounds							
1)	SA Tetrachlo...	4.907	3.996	31818	23670	1.005	1.453 #
2)	SA Decachlor...	0.000	9.336	0	29518	N.D.	1.351 #
Target Compounds							
20)	L4 AR-1242-5	0.000	6.130	0	37836	N.D.	71.302 #
26)	L6 AR-1254-1	0.000	6.130	0	37836	N.D.	36.342 #
29)	L6 AR-1254-4	0.000	6.975	0	2507	N.D.	2.604 #
30)	L6 AR-1254-5	8.501f	0.000	11184	0	8.815	N.D. #
31)	L7 AR-1260-1	0.000	6.884f	0	44429	N.D.	41.256 #
32)	L7 AR-1260-2	8.204f	7.059	25838	643	18.663	0.502 #
33)	L7 AR-1260-3	8.570f	7.210	46665	30218	56.419	25.118 #
34)	L7 AR-1260-4	8.763f	0.000	3414	0	3.424	N.D. #
35)	L7 AR-1260-5	0.000	7.962	0	252811	N.D.	117.864 #
36)	L8 AR-1262-1	8.570f	0.000	46665	0	34.948	N.D. #
37)	L8 AR-1262-2	0.000	7.962	0	252811	N.D.	111.285 #
38)	L8 AR-1262-3	9.444f	0.000	32003	0	32.783	N.D. #
39)	L8 AR-1262-4	0.000	8.293	0	206545	N.D.	114.991 #
40)	L8 AR-1262-5	0.000	8.773f	0	147260	N.D.	161.743 #
41)	L9 AR-1268-1	9.444f	0.000	32003	0	11.884	N.D. #
42)	L9 AR-1268-2	0.000	8.293	0	206545	N.D.	77.483 #
43)	L9 AR-1268-3	0.000	8.543f	0	51943	N.D.	22.639 #
44)	L9 AR-1268-4	0.000	8.773f	0	147260	N.D.	143.069 #
45)	L9 AR-1268-5	10.610f	0.000	72296	0	9.238	N.D. #

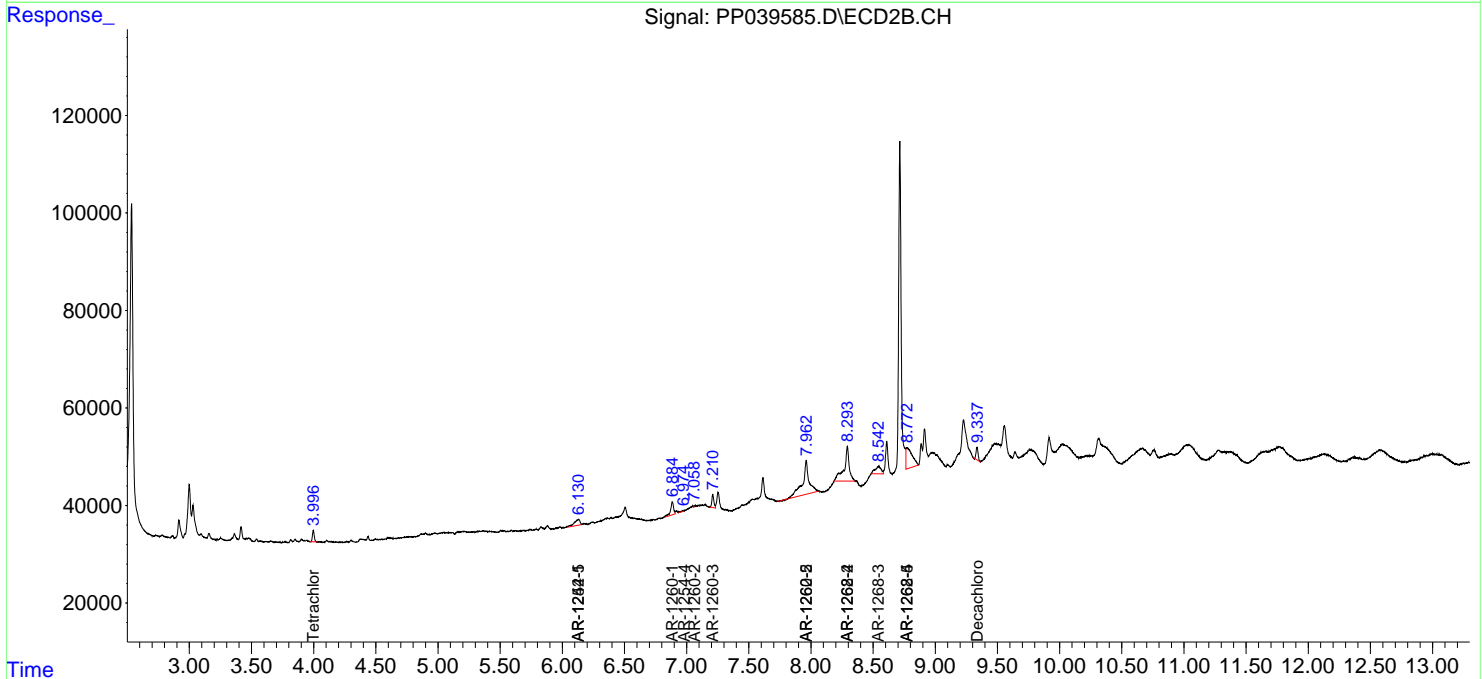
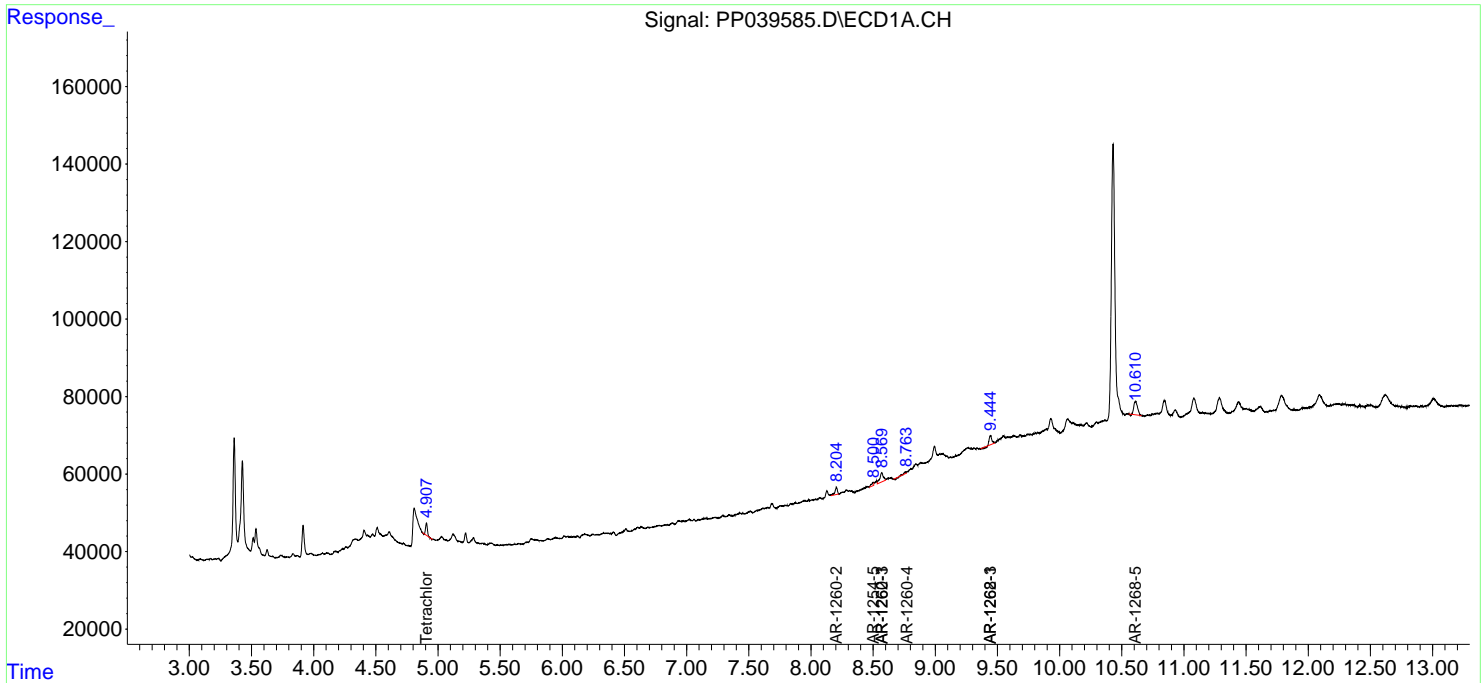
(f)=RT Delta > 1/2 Window (#)=Amounts differ by > 25% (m)=manual int.

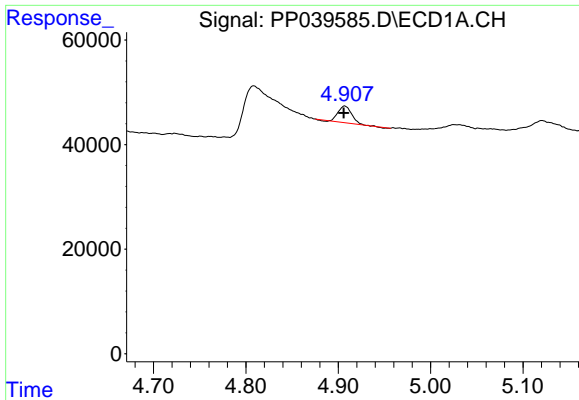
Data Path : Z:\pestpcbsrv\HPCHEM1\ECD_P\Data\PP092821\
 Data File : PP039585.D
 Signal(s) : Signal #1: ECD1A.CH Signal #2: ECD2B.CH
 Acq On : 28 Sep 2021 17:44
 Operator : AJ\MA
 Sample : M3957-02 10X
 Misc :
 ALS Vial : 15 Sample Multiplier: 1

Instrument :
 ECD_P
 ClientSampled :
 HED760-2-(1-2)

Integration File signal 1: autoint1.e
 Integration File signal 2: autoint2.e
 Quant Time: Sep 29 02:13:04 2021
 Quant Method : Z:\pestpcbsrv\HPCHEM1\ECD_P\methods\PP092421.M
 Quant Title : GC EXTRACTABLES
 QLast Update : Sat Sep 25 01:28:12 2021
 Response via : Initial Calibration
 Integrator: ChemStation 6890 Scale Mode: Small noise peaks clipped

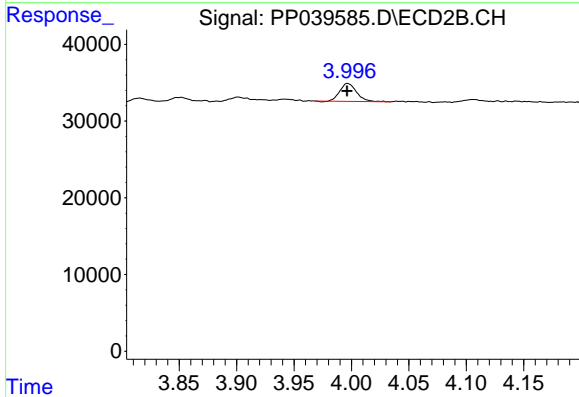
Volume Inj. : 2 µl
 Signal #1 Phase : ZB-MR1 Signal #2 Phase: ZB-MR2
 Signal #1 Info : 30Mx0.32mmx 0.50µ Signal #2 Info : 30M x 0.32mm x 0.25µm



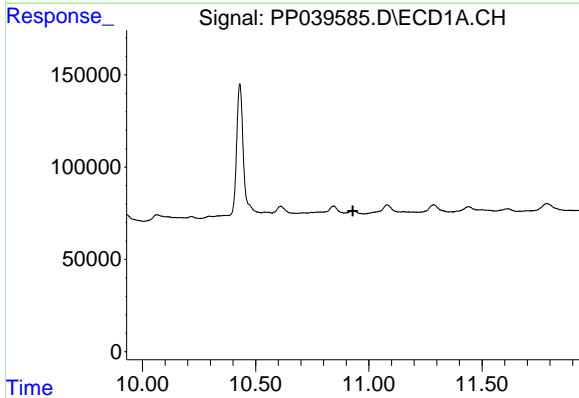


#1 Tetrachloro-m-xylene
 R.T.: 4.907 min
 Delta R.T.: 0.001 min
 Response: 31818
 Conc: 1.01 ng/ml

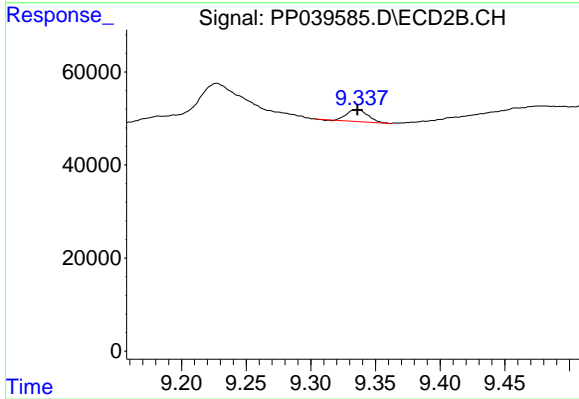
Instrument :
 ECD_P
 ClientSampleId :
 HED760-2-(1-2)



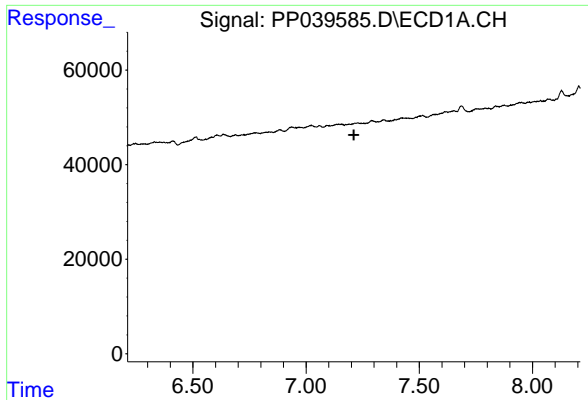
#1 Tetrachloro-m-xylene
 R.T.: 3.996 min
 Delta R.T.: 0.000 min
 Response: 23670
 Conc: 1.45 ng/ml



#2 Decachlorobiphenyl
 R.T.: 0.000 min
 Exp R.T. : 10.930 min
 Response: 0
 Conc: N.D.



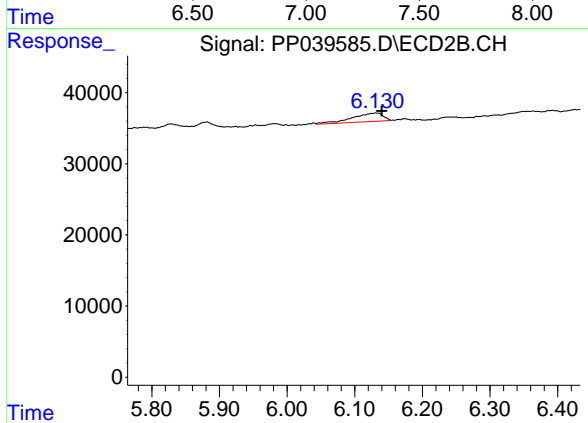
#2 Decachlorobiphenyl
 R.T.: 9.336 min
 Delta R.T.: 0.000 min
 Response: 29518
 Conc: 1.35 ng/ml



#20 AR-1242-5

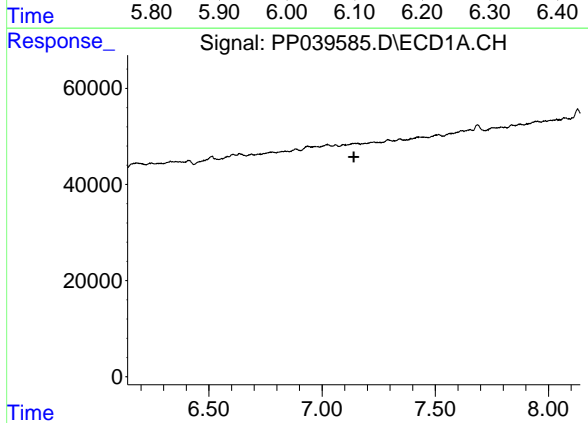
R.T.: 0.000 min
 Exp R.T. : 7.211 min
 Response: 0
 Conc: N.D.

Instrument :
 ECD_P
 ClientSampleId :
 HED760-2-(1-2)



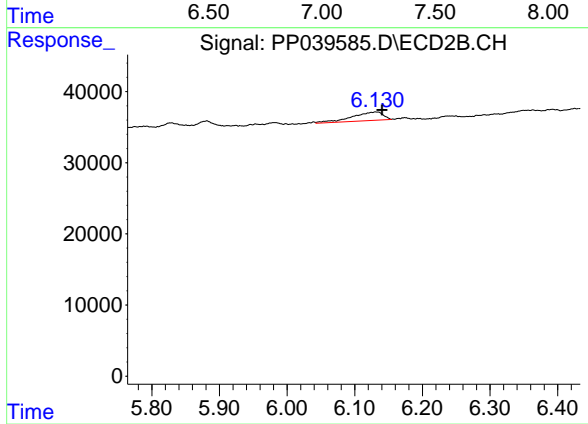
#20 AR-1242-5

R.T.: 6.130 min
 Delta R.T.: -0.010 min
 Response: 37836
 Conc: 71.30 ng/ml



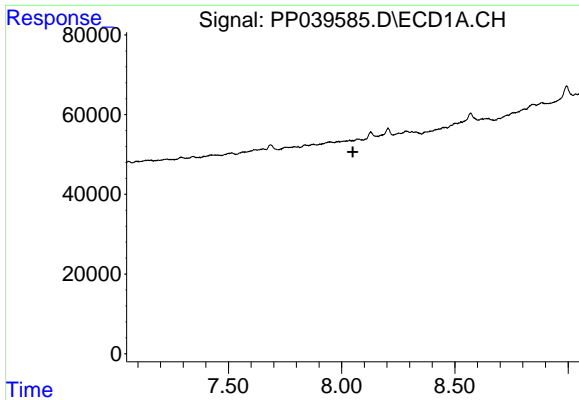
#26 AR-1254-1

R.T.: 0.000 min
 Exp R.T. : 7.141 min
 Response: 0
 Conc: N.D.



#26 AR-1254-1

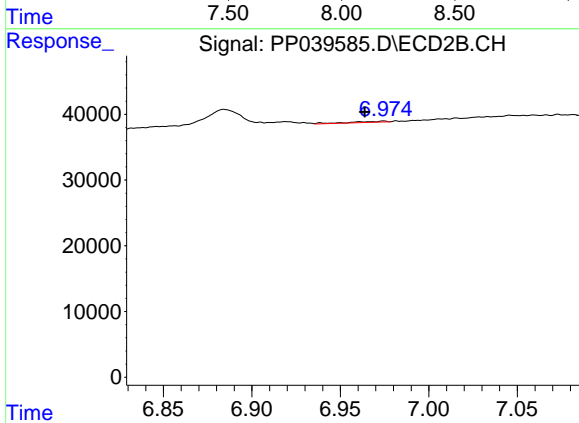
R.T.: 6.130 min
 Delta R.T.: -0.010 min
 Response: 37836
 Conc: 36.34 ng/ml



#29 AR-1254-4

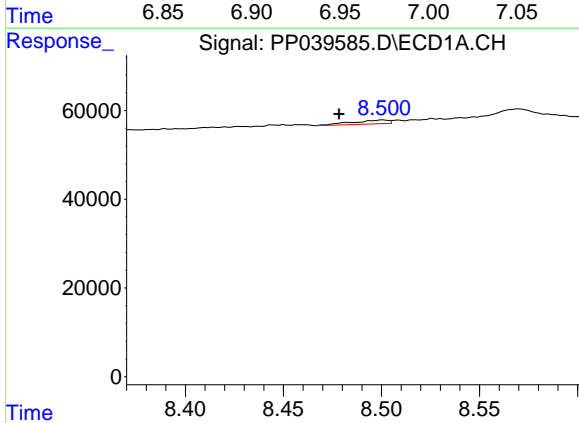
R.T.: 0.000 min
 Exp R.T.: 8.050 min
 Response: 0
 Conc: N.D.

Instrument :
 ECD_P
 ClientSampled :
 HED760-2-(1-2)



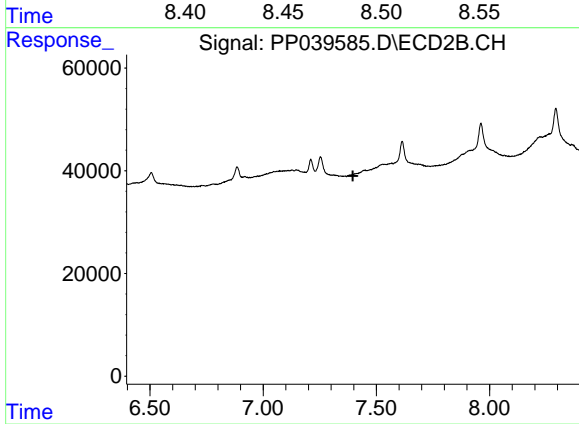
#29 AR-1254-4

R.T.: 6.975 min
 Delta R.T.: 0.011 min
 Response: 2507
 Conc: 2.60 ng/ml



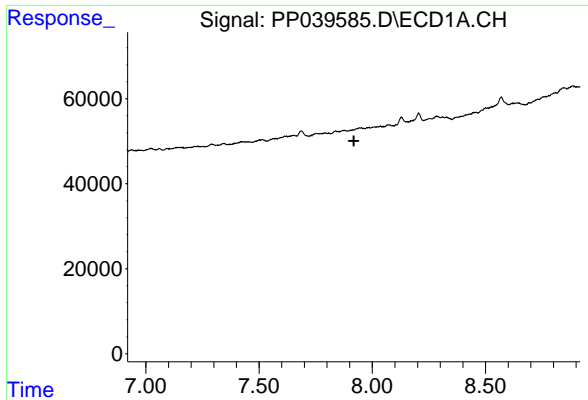
#30 AR-1254-5

R.T.: 8.501 min
 Delta R.T.: 0.022 min
 Response: 11184
 Conc: 8.81 ng/ml



#30 AR-1254-5

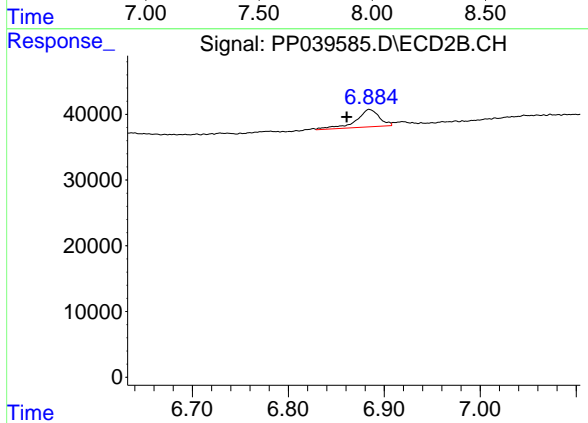
R.T.: 0.000 min
 Exp R.T.: 7.396 min
 Response: 0
 Conc: N.D.



#31 AR-1260-1

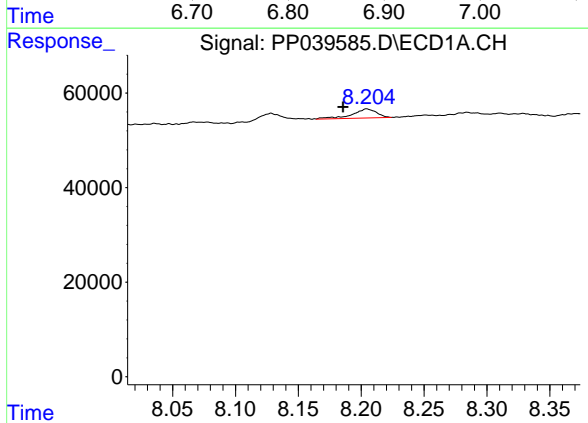
R.T.: 0.000 min
 Exp R.T.: 7.919 min
 Response: 0
 Conc: N.D.

Instrument :
 ECD_P
 ClientSampleId :
 HED760-2-(1-2)



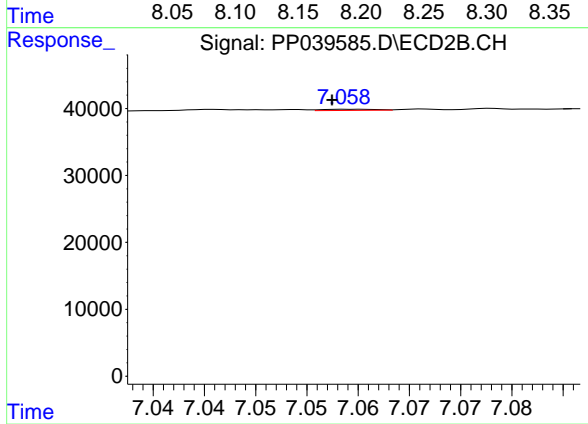
#31 AR-1260-1

R.T.: 6.884 min
 Delta R.T.: 0.023 min
 Response: 44429
 Conc: 41.26 ng/ml



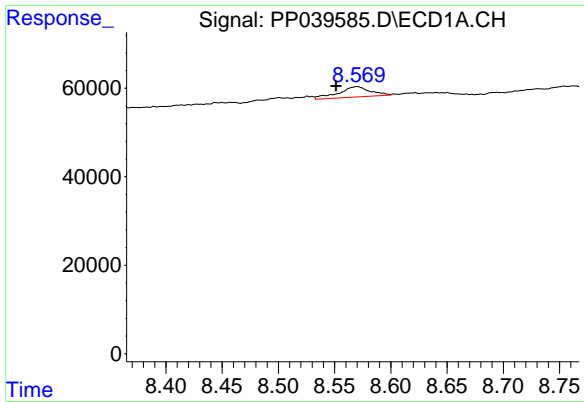
#32 AR-1260-2

R.T.: 8.204 min
 Delta R.T.: 0.019 min
 Response: 25838
 Conc: 18.66 ng/ml



#32 AR-1260-2

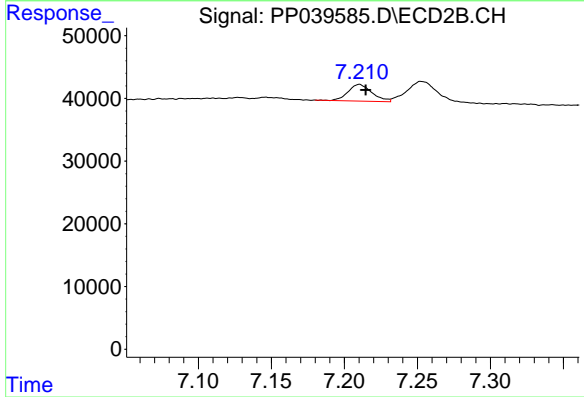
R.T.: 7.059 min
 Delta R.T.: 0.002 min
 Response: 643
 Conc: 0.50 ng/ml



#33 AR-1260-3

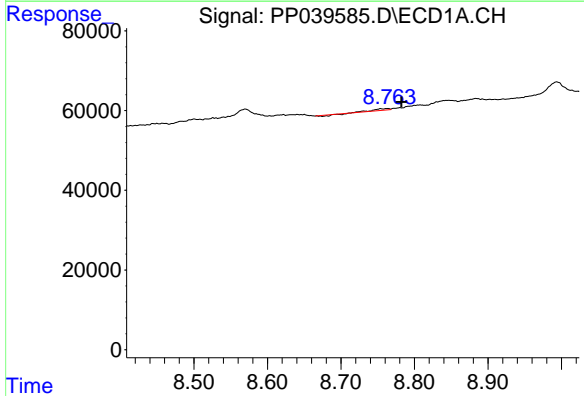
R.T.: 8.570 min
 Delta R.T.: 0.018 min
 Response: 46665
 Conc: 56.42 ng/ml

Instrument :
 ECD_P
 ClientSampleId :
 HED760-2-(1-2)



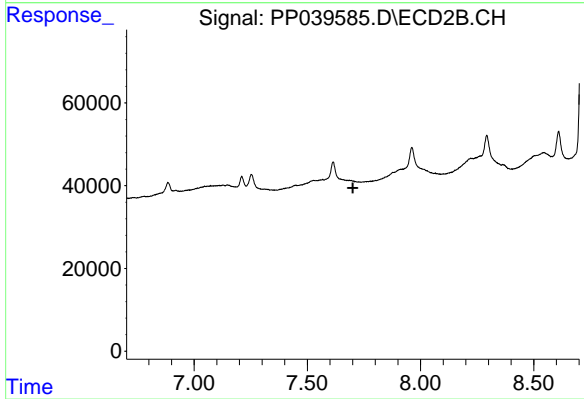
#33 AR-1260-3

R.T.: 7.210 min
 Delta R.T.: -0.004 min
 Response: 30218
 Conc: 25.12 ng/ml



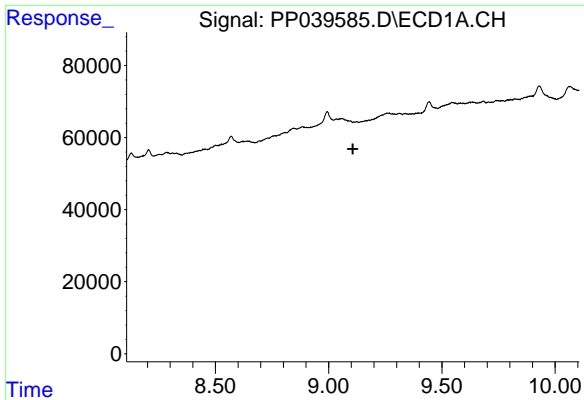
#34 AR-1260-4

R.T.: 8.763 min
 Delta R.T.: -0.019 min
 Response: 3414
 Conc: 3.42 ng/ml



#34 AR-1260-4

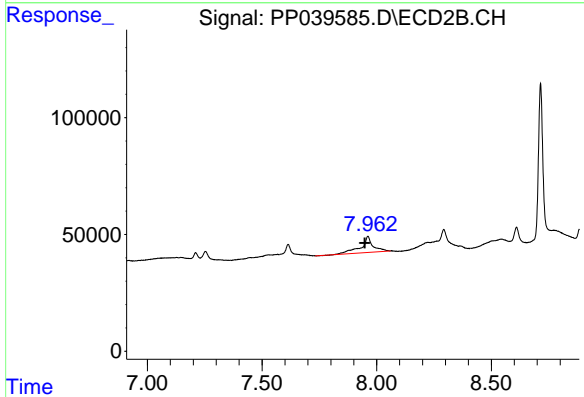
R.T.: 0.000 min
 Exp R.T. : 7.701 min
 Response: 0
 Conc: N.D.



#35 AR-1260-5

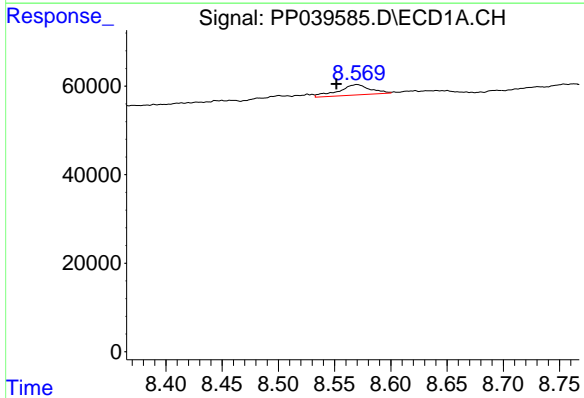
R.T.: 0.000 min
 Exp R.T.: 9.107 min
 Response: 0
 Conc: N.D.

Instrument :
 ECD_P
 ClientSampled :
 HED760-2-(1-2)



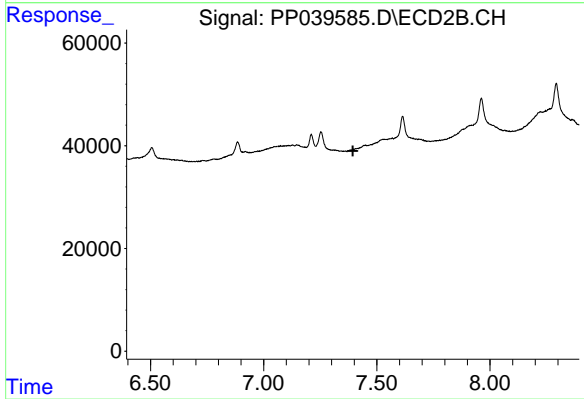
#35 AR-1260-5

R.T.: 7.962 min
 Delta R.T.: 0.013 min
 Response: 252811
 Conc: 117.86 ng/ml



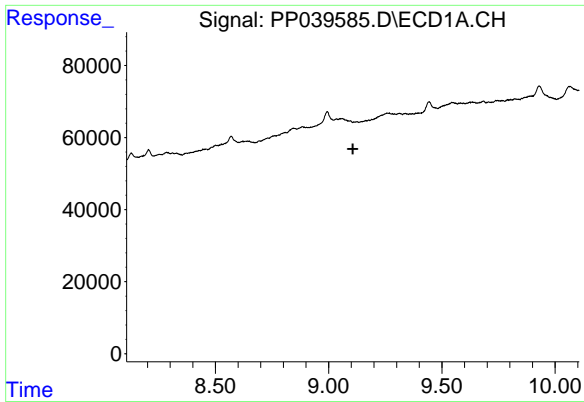
#36 AR-1262-1

R.T.: 8.570 min
 Delta R.T.: 0.018 min
 Response: 46665
 Conc: 34.95 ng/ml



#36 AR-1262-1

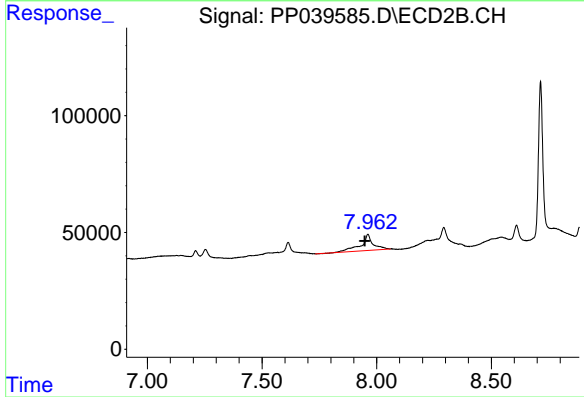
R.T.: 0.000 min
 Exp R.T.: 7.394 min
 Response: 0
 Conc: N.D.



#37 AR-1262-2

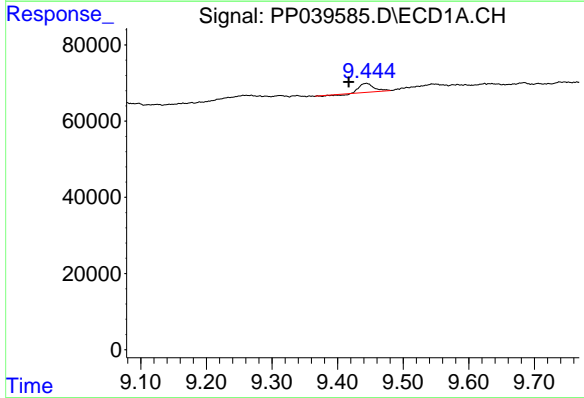
R.T.: 0.000 min
 Exp R.T. : 9.107 min
 Response: 0
 Conc: N.D.

Instrument :
 ECD_P
 ClientSampleId :
 HED760-2-(1-2)



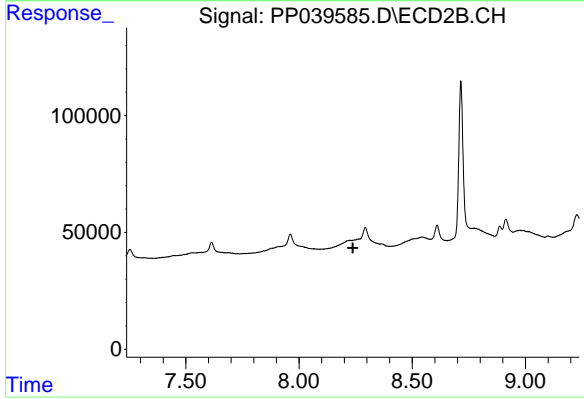
#37 AR-1262-2

R.T.: 7.962 min
 Delta R.T.: 0.013 min
 Response: 252811
 Conc: 111.29 ng/ml



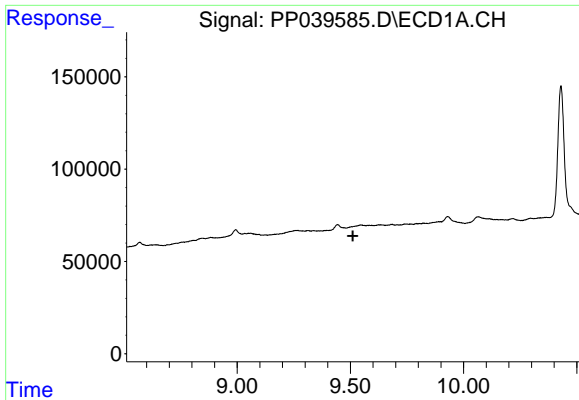
#38 AR-1262-3

R.T.: 9.444 min
 Delta R.T.: 0.027 min
 Response: 32003
 Conc: 32.78 ng/ml



#38 AR-1262-3

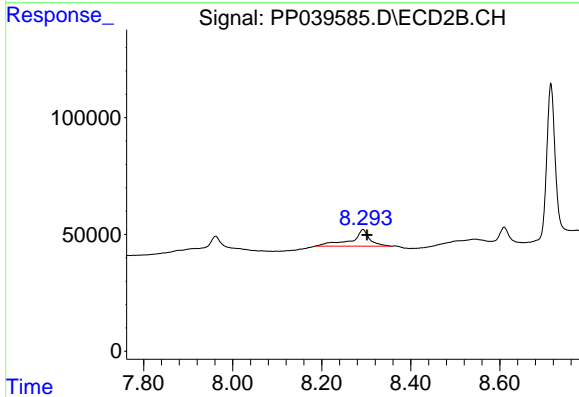
R.T.: 0.000 min
 Exp R.T. : 8.238 min
 Response: 0
 Conc: N.D.



#39 AR-1262-4

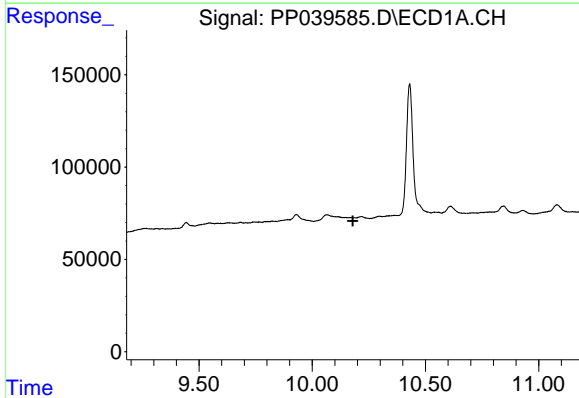
R.T.: 0.000 min
 Exp R.T.: 9.511 min
 Response: 0
 Conc: N.D.

Instrument :
 ECD_P
 ClientSampleId :
 HED760-2-(1-2)



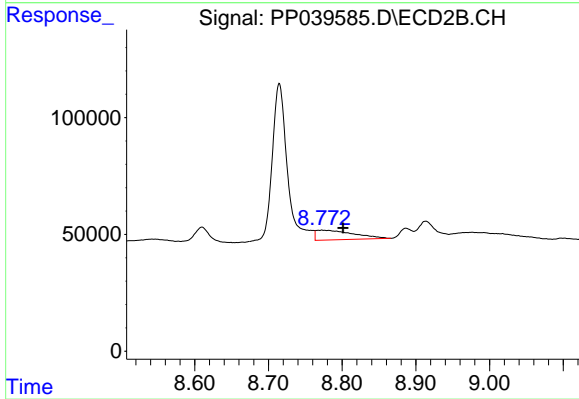
#39 AR-1262-4

R.T.: 8.293 min
 Delta R.T.: -0.009 min
 Response: 206545
 Conc: 114.99 ng/ml



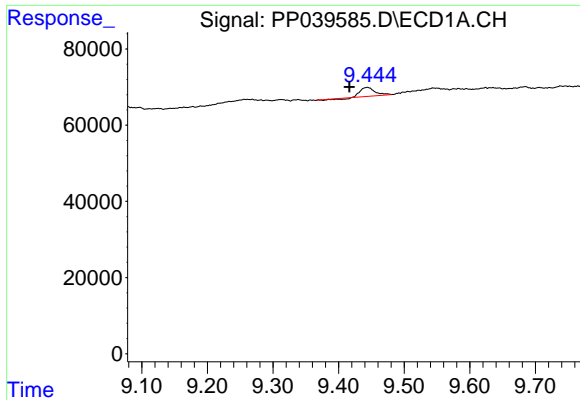
#40 AR-1262-5

R.T.: 0.000 min
 Exp R.T.: 10.180 min
 Response: 0
 Conc: N.D.



#40 AR-1262-5

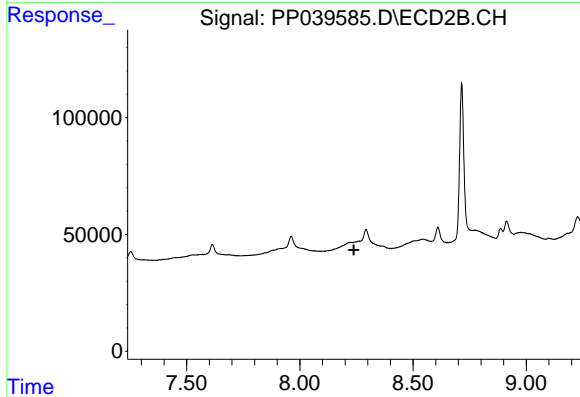
R.T.: 8.773 min
 Delta R.T.: -0.028 min
 Response: 147260
 Conc: 161.74 ng/ml



#41 AR-1268-1

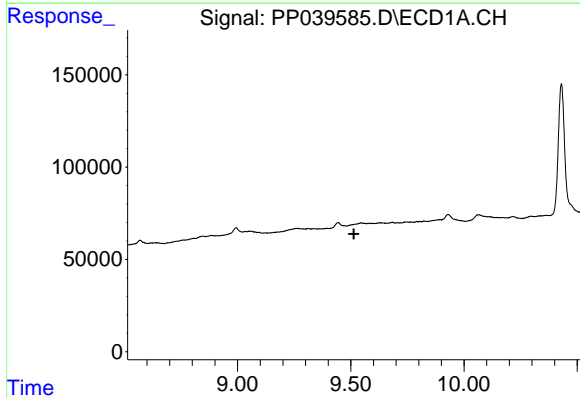
R.T.: 9.444 min
 Delta R.T.: 0.027 min
 Response: 32003
 Conc: 11.88 ng/ml

Instrument :
 ECD_P
ClientSampled :
 HED760-2-(1-2)



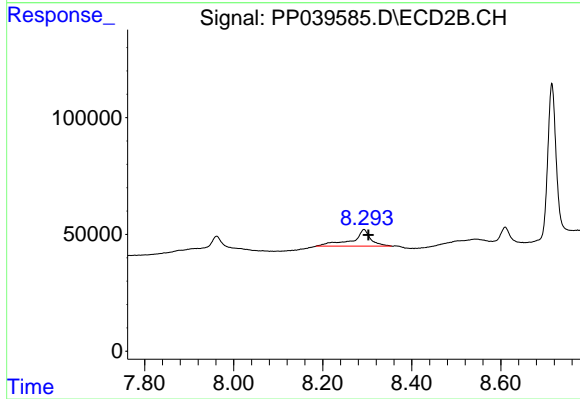
#41 AR-1268-1

R.T.: 0.000 min
 Exp R.T. : 8.239 min
 Response: 0
 Conc: N.D.



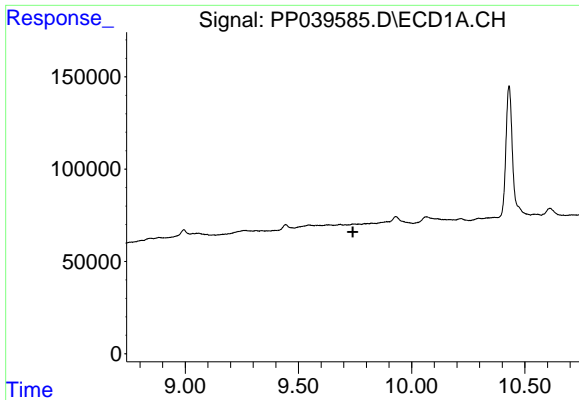
#42 AR-1268-2

R.T.: 0.000 min
 Exp R.T. : 9.514 min
 Response: 0
 Conc: N.D.



#42 AR-1268-2

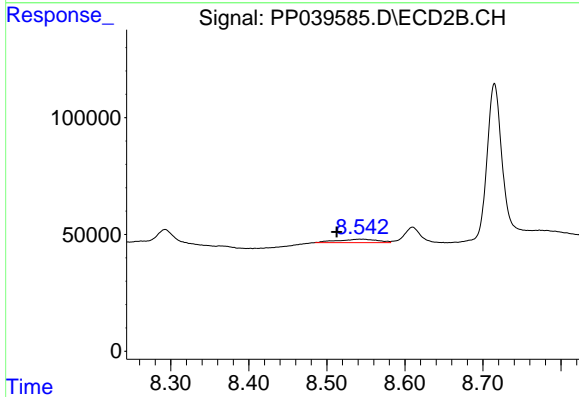
R.T.: 8.293 min
 Delta R.T.: -0.010 min
 Response: 206545
 Conc: 77.48 ng/ml



#43 AR-1268-3

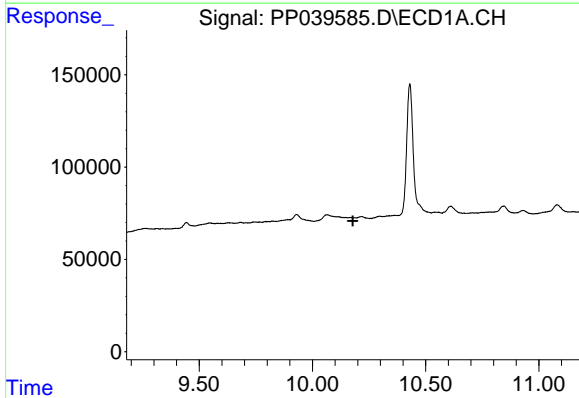
R.T.: 0.000 min
 Exp R.T.: 9.740 min
 Response: 0
 Conc: N.D.

Instrument :
 ECD_P
 ClientSampleId :
 HED760-2-(1-2)



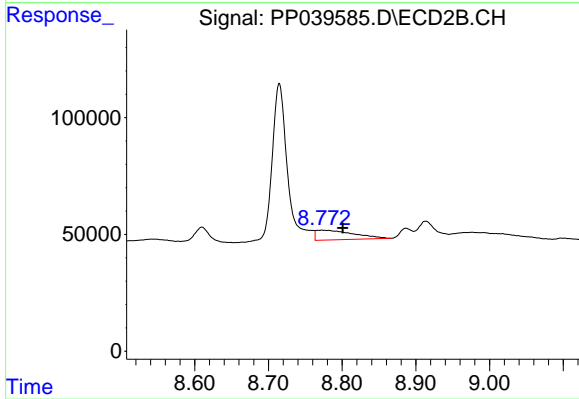
#43 AR-1268-3

R.T.: 8.543 min
 Delta R.T.: 0.030 min
 Response: 51943
 Conc: 22.64 ng/ml



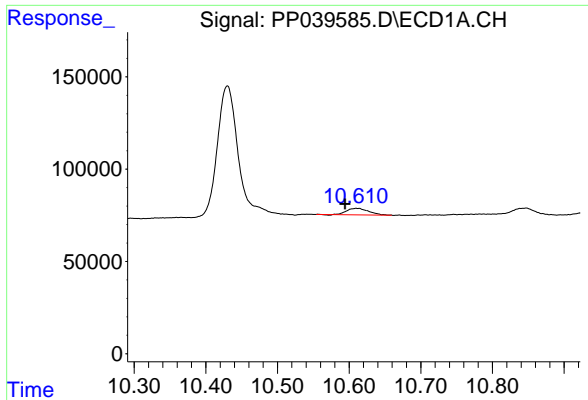
#44 AR-1268-4

R.T.: 0.000 min
 Exp R.T.: 10.179 min
 Response: 0
 Conc: N.D.



#44 AR-1268-4

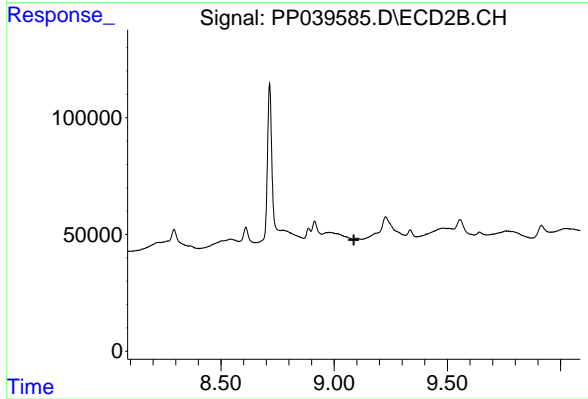
R.T.: 8.773 min
 Delta R.T.: -0.028 min
 Response: 147260
 Conc: 143.07 ng/ml



#45 AR-1268-5

R.T.: 10.610 min
Delta R.T.: 0.016 min
Response: 72296
Conc: 9.24 ng/ml

Instrument :
ECD_P
ClientSampled :
HED760-2-(1-2)



#45 AR-1268-5

R.T.: 0.000 min
Exp R.T. : 9.087 min
Response: 0
Conc: N.D.