

Data Path : Z:\pestpcbsrv\HPCHEM1\ECD_P\Data\PP092823\
 Data File : PP060364.D
 Signal(s) : Signal #1: ECD1A.ch Signal #2: ECD2B.ch
 Acq On : 28 Sep 2023 18:59
 Operator : YP\AJ
 Sample : 04647-05
 Misc :
 ALS Vial : 28 Sample Multiplier: 1

Instrument :
 ECD_P
 ClientSampleId :

Integration File signal 1: autoint1.e
 Integration File signal 2: autoint2.e
 Quant Time: Sep 29 00:14:49 2023
 Quant Method : Z:\pestpcbsrv\HPCHEM1\ECD_P\methods\PP092623.M
 Quant Title : GC EXTRACTABLES
 QLast Update : Wed Sep 27 11:30:16 2023
 Response via : Initial Calibration
 Integrator: ChemStation

Volume Inj. : 2 µl
 Signal #1 Phase : ZB-MR2 Signal #2 Phase: ZB-MR2
 Signal #1 Info : 30Mx0.32mmx 0.50µ Signal #2 Info : 30M x 0.32mm x 0.25µm

Compound	RT#1	RT#2	Resp#1	Resp#2	ng/ml	ng/ml

System Monitoring Compounds						
1) SA Tetrachlo...	4.532	3.685	44103263	32055975	19.693	21.536
2) SA Decachlor...	10.454	8.748	33611129	28803330	19.037	17.658
Target Compounds						
3) L1 AR-1016-1	5.718	4.783	18493167	15258191	251.250	262.576
4) L1 AR-1016-2	5.742	4.803	24921860	19917284	237.956	247.403
5) L1 AR-1016-3	5.805	4.980	17099460	11870146	261.634	265.595
6) L1 AR-1016-4	5.905	5.022	14149636	8419427	260.202	233.979
7) L1 AR-1016-5	6.203	5.237	14882590	12757378	267.563	262.552
8) L2 AR-1221-1	4.740	3.901	1251123	888453	43.311	42.530
9) L2 AR-1221-2	4.831	3.988	2041982	1686307	95.576	113.092
10) L2 AR-1221-3	4.908	4.065	7348975	5515358	121.013	125.555
11) L3 AR-1232-1	4.908f	4.065	7348975	5515358	145.992	151.565
12) L3 AR-1232-2	5.447f	4.803	12051564	19917284	440.115	546.153
13) L3 AR-1232-3	5.742f	4.980	24921860	11870146	536.910	593.055
14) L3 AR-1232-4	5.905f	5.064	14149636	10031153	575.666	537.453
15) L3 AR-1232-5	5.996f	5.237	11301587	12757378	545.400	613.354
16) L4 AR-1242-1	5.718	4.783	18493167	15258191	289.375	301.384
17) L4 AR-1242-2	5.742	4.803	24921860	19917284	275.239	286.809
18) L4 AR-1242-3	5.805	4.980	17099460	11870146	303.717	308.230
19) L4 AR-1242-4	5.905	5.064	14149636	10031153	302.952	254.708
20) L4 AR-1242-5	6.650	5.592	10893697	16162805	216.592	330.412 #
21) L5 AR-1248-1	5.718	4.783	18493167	15258191	397.494	418.106
22) L5 AR-1248-2	5.996	5.022	11301587	8419427	162.999	161.070
23) L5 AR-1248-3	6.203	5.064	14882590	10031153	195.954	180.663
24) L5 AR-1248-4	6.611	5.237	11235959	12757378	135.854	193.801 #
25) L5 AR-1248-5	6.650	5.633	10893697	8582239	135.354	133.426
26) L6 AR-1254-1	6.584	5.592	14039609	16162805	164.513	163.395
27) L6 AR-1254-2	6.807	5.741	17766262	10690333	139.205	124.389
28) L6 AR-1254-3	7.176	6.163	9497661	24325797	71.456	169.723 #
29) L6 AR-1254-4	7.464	6.377	6053571	3058770	61.558	35.093 #
30) L6 AR-1254-5	7.887	6.796	89037264	38213277	821.808	301.556 #
31) L7 AR-1260-1	7.342	6.279	35983995	34045429	343.277	339.181
32) L7 AR-1260-2	7.601	6.467	38951550	36300198	322.164	304.265
33) L7 AR-1260-3	7.963	6.622	52110333	34807852	562.199	304.013 #
34) L7 AR-1260-4	8.195	7.097	31267423	23110823	294.834	242.807
35) L7 AR-1260-5	8.529	7.339	39228035	39590002	202.707	182.683
36) L8 AR-1262-1	7.963	6.890	52110333	12818779	417.767	239.391 #
37) L8 AR-1262-2	8.529	7.097	39228035	23110823	187.261	195.937
38) L8 AR-1262-3	8.871	7.625	21503659	6790108	142.091	73.638 #
39) L8 AR-1262-4	8.934f	7.688	12766279	25485332	106.673	151.282 #
40) L8 AR-1262-5	9.647	8.187	5777484	5081759	72.161	65.593
41) L9 AR-1268-1	8.871	7.625	21503659	6790108	81.054	24.980 #

Data Path : Z:\pestpcbsrv\HPCHEM1\ECD_P\Data\PP092823\
 Data File : PP060364.D
 Signal(s) : Signal #1: ECD1A.ch Signal #2: ECD2B.ch
 Acq On : 28 Sep 2023 18:59
 Operator : YP\AJ
 Sample : 04647-05
 Misc :
 ALS Vial : 28 Sample Multiplier: 1

Instrument :
 ECD_P
 ClientSampleId :

Integration File signal 1: autoint1.e
 Integration File signal 2: autoint2.e
 Quant Time: Sep 29 00:14:49 2023
 Quant Method : Z:\pestpcbsrv\HPCHEM1\ECD_P\methods\PP092623.M
 Quant Title : GC EXTRACTABLES
 QLast Update : Wed Sep 27 11:30:16 2023
 Response via : Initial Calibration
 Integrator: ChemStation

Volume Inj. : 2 µl
 Signal #1 Phase : ZB-MR1 Signal #2 Phase: ZB-MR2
 Signal #1 Info : 30Mx0.32mmx 0.50µ Signal #2 Info : 30M x 0.32mm x 0.25µm

	Compound	RT#1	RT#2	Resp#1	Resp#2	ng/ml	ng/ml
42)	L9 AR-1268-2	8.934f	7.688	12766279	25485332	52.378	104.502 #
43)	L9 AR-1268-3	0.000	7.899	0	481887	N.D.	2.253 #
44)	L9 AR-1268-4	9.647	8.187	5777484	5081759	62.539	57.920
45)	L9 AR-1268-5	10.092	8.485	1211605	1251100	1.914	2.002

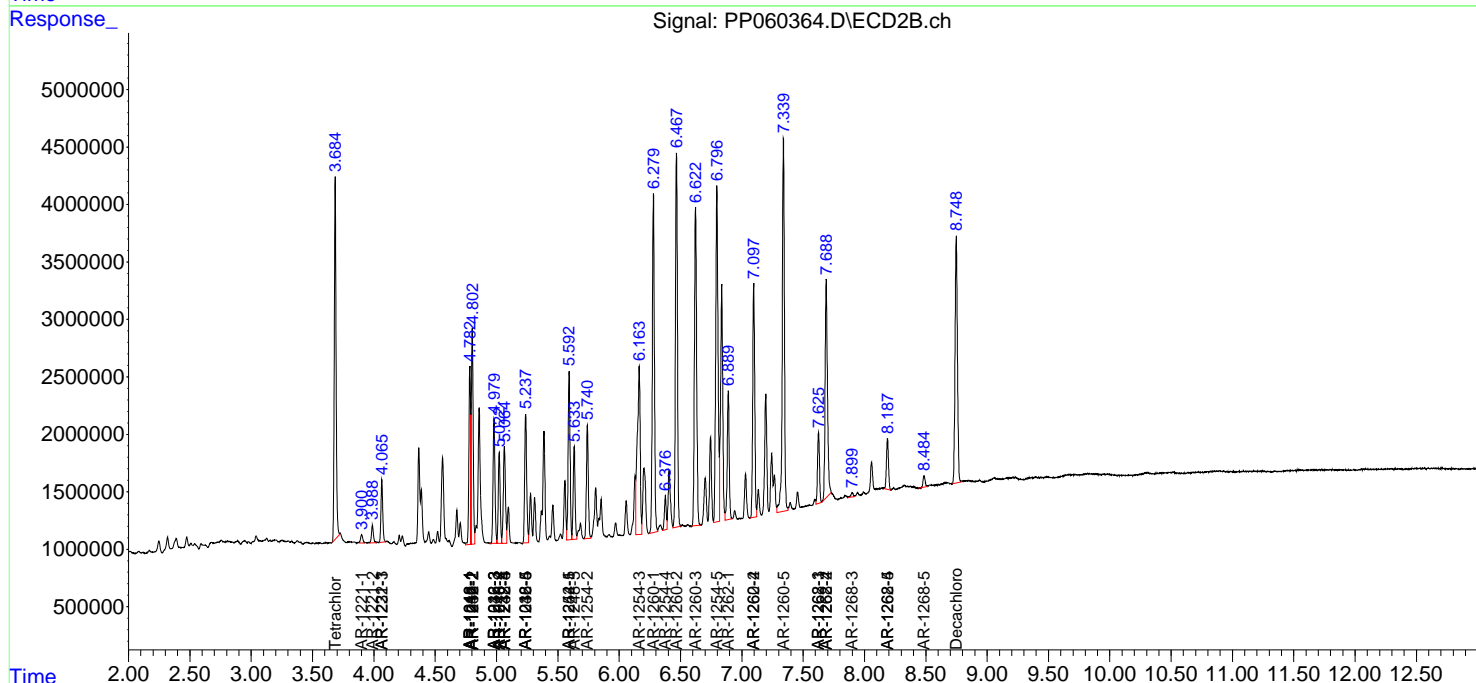
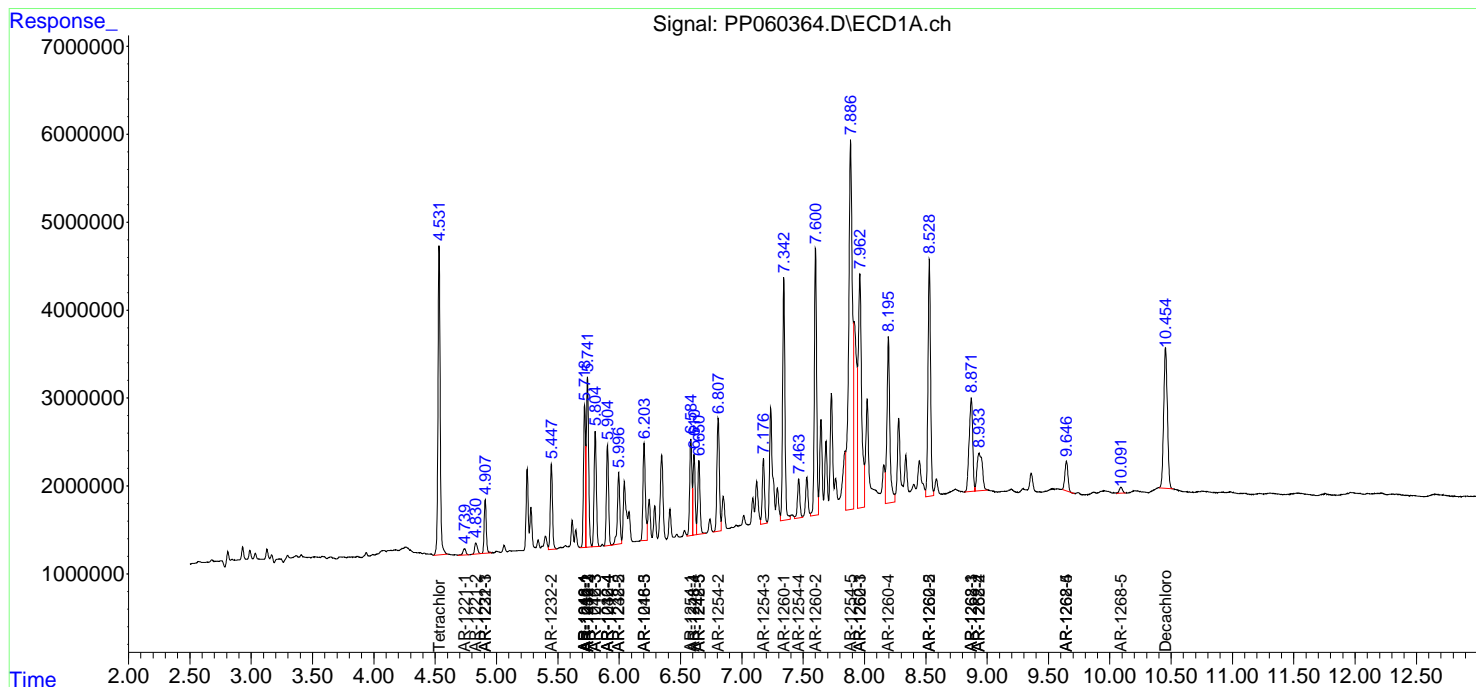
(f)=RT Delta > 1/2 Window (#)=Amounts differ by > 25% (m)=manual int.

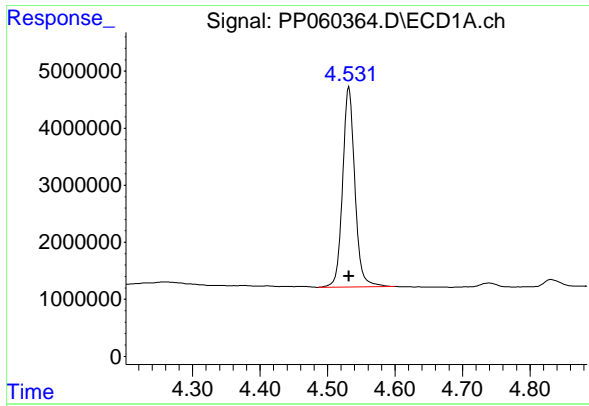
Data Path : Z:\pestpcbsrv\HPCHEM1\ECD_P\Data\PP092823\
 Data File : PP060364.D
 Signal(s) : Signal #1: ECD1A.ch Signal #2: ECD2B.ch
 Acq On : 28 Sep 2023 18:59
 Operator : YP\AJ
 Sample : 04647-05
 Misc :
 ALS Vial : 28 Sample Multiplier: 1

Instrument :
 ECD_P
 ClientSampleId :

Integration File signal 1: autoint1.e
 Integration File signal 2: autoint2.e
 Quant Time: Sep 29 00:14:49 2023
 Quant Method : Z:\pestpcbsrv\HPCHEM1\ECD_P\methods\PP092623.M
 Quant Title : GC EXTRACTABLES
 QLast Update : Wed Sep 27 11:30:16 2023
 Response via : Initial Calibration
 Integrator: ChemStation

Volume Inj. : 2 µl
 Signal #1 Phase : ZB-MR1 Signal #2 Phase: ZB-MR2
 Signal #1 Info : 30Mx0.32mmx 0.50µm Signal #2 Info : 30M x 0.32mm x 0.25µm

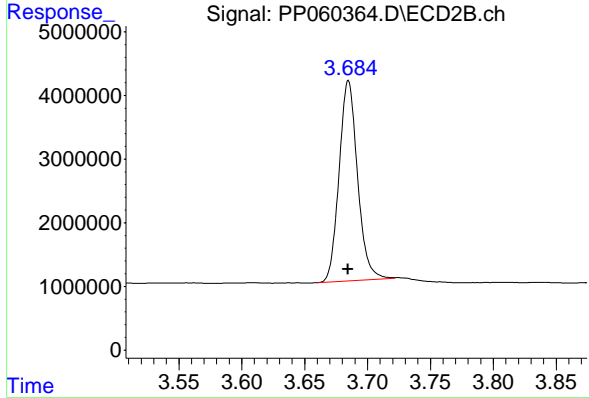




#1 Tetrachloro-m-xylene

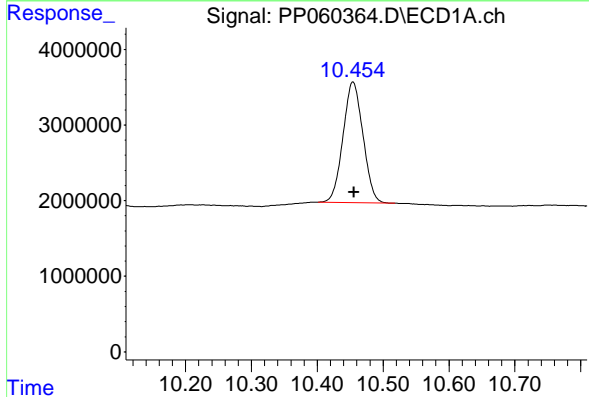
R.T.: 4.532 min
 Delta R.T.: 0.000 min
 Response: 44103263
 Conc: 19.69 ng/ml

Instrument :
 ECD_P
 ClientSampleId :



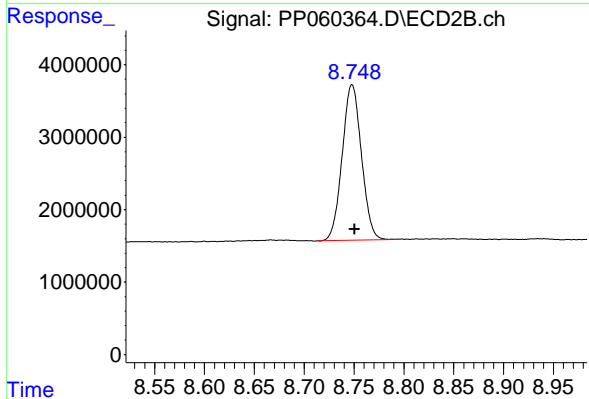
#1 Tetrachloro-m-xylene

R.T.: 3.685 min
 Delta R.T.: 0.000 min
 Response: 32055975
 Conc: 21.54 ng/ml



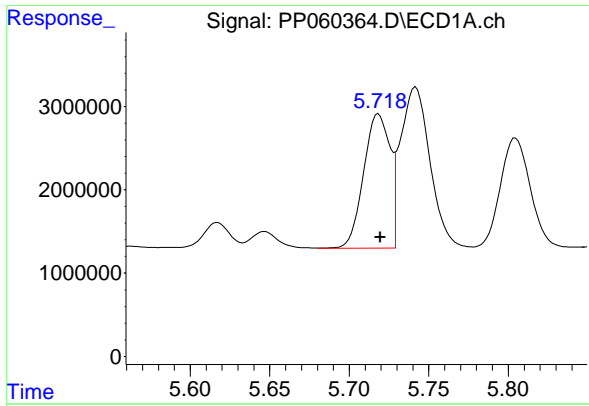
#2 Decachlorobiphenyl

R.T.: 10.454 min
 Delta R.T.: -0.001 min
 Response: 33611129
 Conc: 19.04 ng/ml



#2 Decachlorobiphenyl

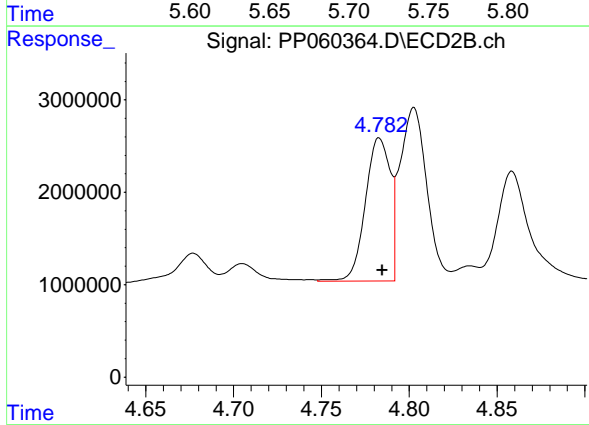
R.T.: 8.748 min
 Delta R.T.: -0.003 min
 Response: 28803330
 Conc: 17.66 ng/ml



#3 AR-1016-1

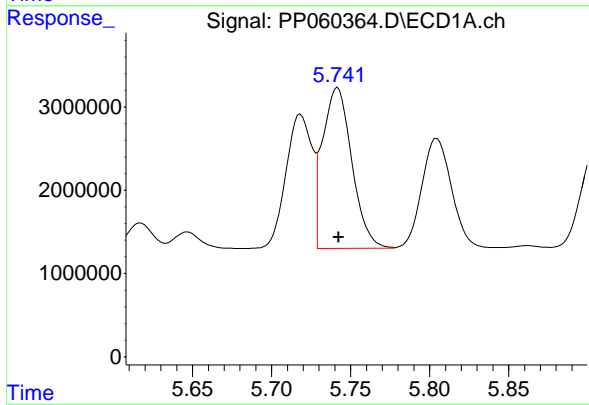
R.T.: 5.718 min
 Delta R.T.: -0.001 min
 Response: 18493167
 Conc: 251.25 ng/ml

Instrument :
 ECD_P
 ClientSampleId :



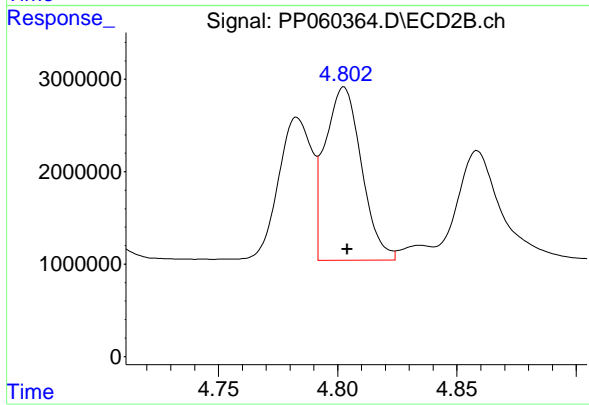
#3 AR-1016-1

R.T.: 4.783 min
 Delta R.T.: -0.002 min
 Response: 15258191
 Conc: 262.58 ng/ml



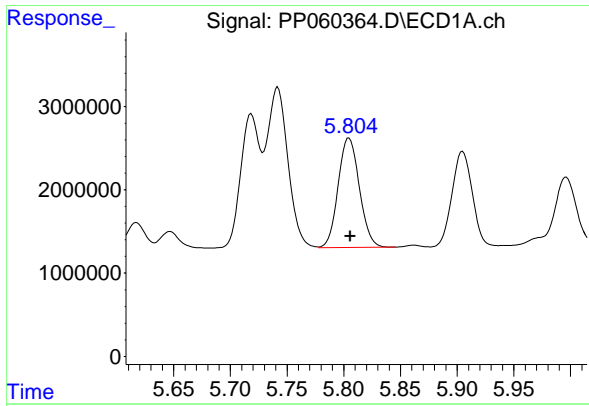
#4 AR-1016-2

R.T.: 5.742 min
 Delta R.T.: 0.000 min
 Response: 24921860
 Conc: 237.96 ng/ml



#4 AR-1016-2

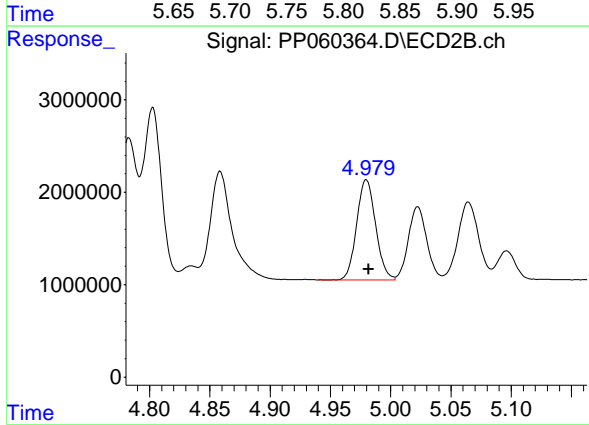
R.T.: 4.803 min
 Delta R.T.: -0.001 min
 Response: 19917284
 Conc: 247.40 ng/ml



#5 AR-1016-3

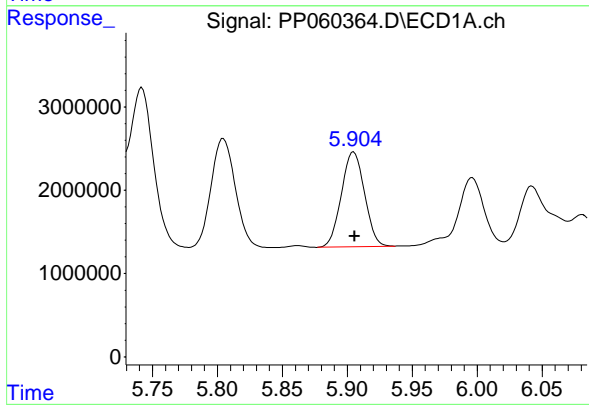
R.T.: 5.805 min
 Delta R.T.: -0.001 min
 Response: 17099460
 Conc: 261.63 ng/ml

Instrument :
 ECD_P
 ClientSampleId :



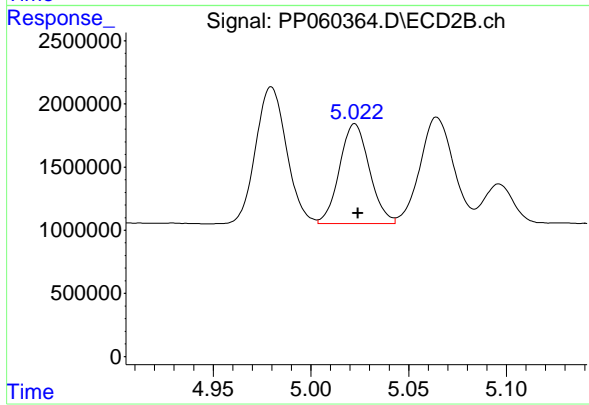
#5 AR-1016-3

R.T.: 4.980 min
 Delta R.T.: -0.002 min
 Response: 11870146
 Conc: 265.60 ng/ml



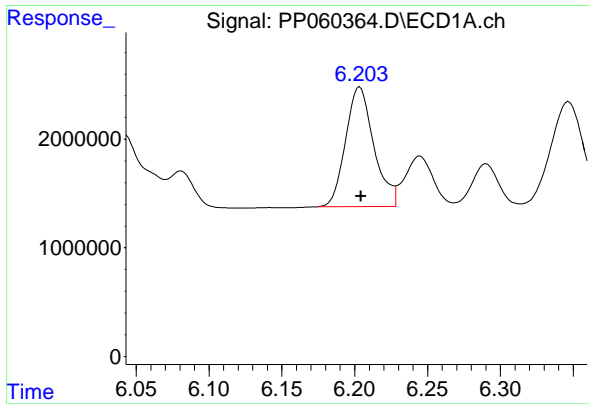
#6 AR-1016-4

R.T.: 5.905 min
 Delta R.T.: 0.000 min
 Response: 14149636
 Conc: 260.20 ng/ml



#6 AR-1016-4

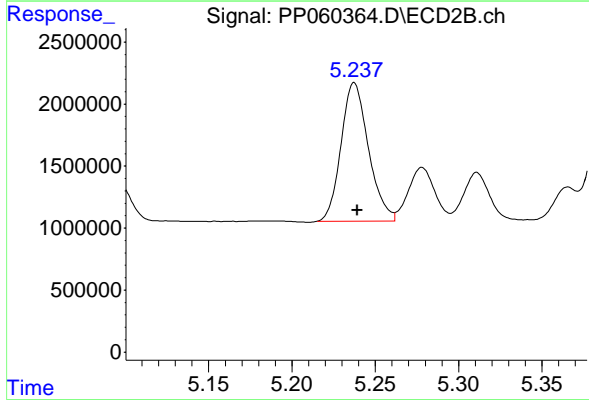
R.T.: 5.022 min
 Delta R.T.: -0.002 min
 Response: 8419427
 Conc: 233.98 ng/ml



#7 AR-1016-5

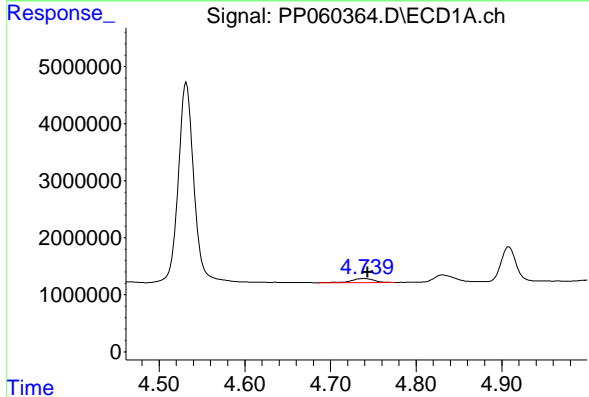
R.T.: 6.203 min
 Delta R.T.: 0.000 min
 Response: 14882590
 Conc: 267.56 ng/ml

Instrument :
 ECD_P
 ClientSampleId :



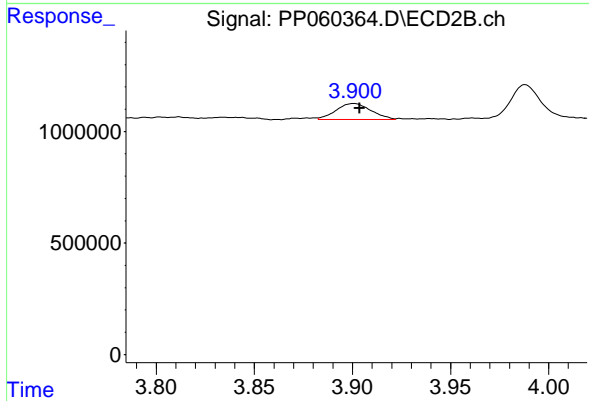
#7 AR-1016-5

R.T.: 5.237 min
 Delta R.T.: -0.002 min
 Response: 12757378
 Conc: 262.55 ng/ml



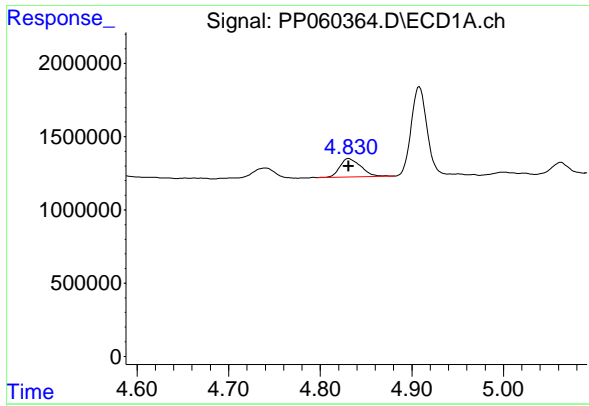
#8 AR-1221-1

R.T.: 4.740 min
 Delta R.T.: -0.004 min
 Response: 1251123
 Conc: 43.31 ng/ml



#8 AR-1221-1

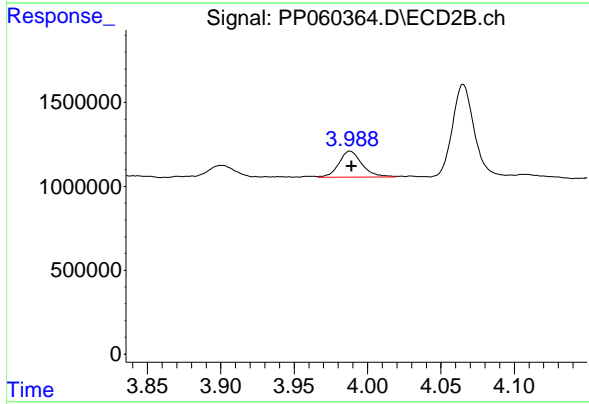
R.T.: 3.901 min
 Delta R.T.: -0.003 min
 Response: 888453
 Conc: 42.53 ng/ml



#9 AR-1221-2

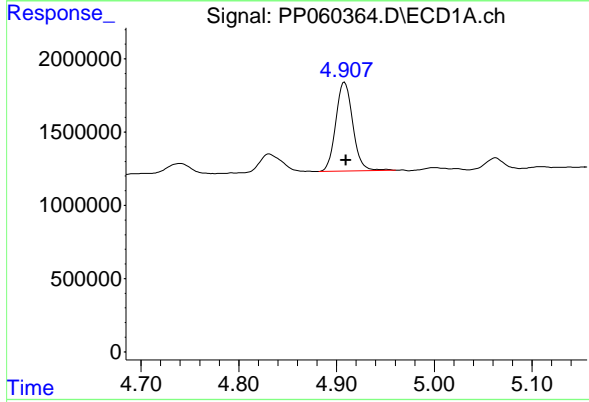
R.T.: 4.831 min
 Delta R.T.: 0.000 min
 Response: 2041982
 Conc: 95.58 ng/ml

Instrument :
 ECD_P
 ClientSampleId :



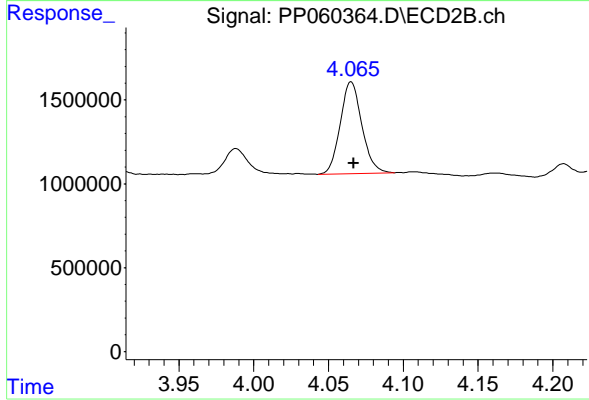
#9 AR-1221-2

R.T.: 3.988 min
 Delta R.T.: -0.001 min
 Response: 1686307
 Conc: 113.09 ng/ml



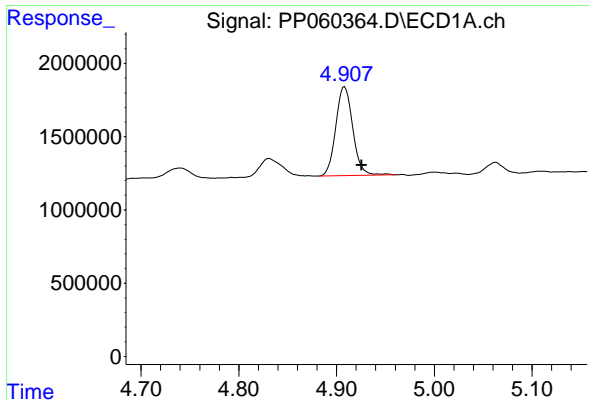
#10 AR-1221-3

R.T.: 4.908 min
 Delta R.T.: -0.001 min
 Response: 7348975
 Conc: 121.01 ng/ml



#10 AR-1221-3

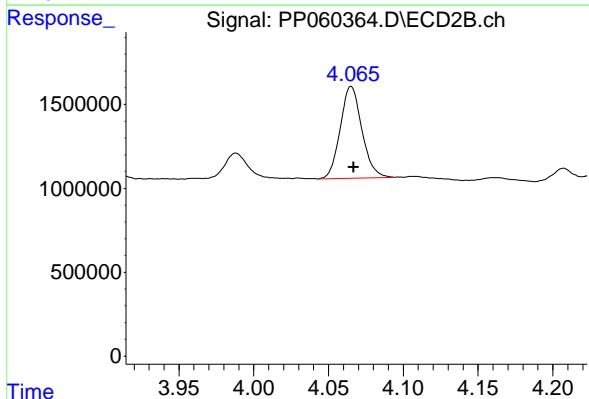
R.T.: 4.065 min
 Delta R.T.: -0.002 min
 Response: 5515358
 Conc: 125.56 ng/ml



#11 AR-1232-1

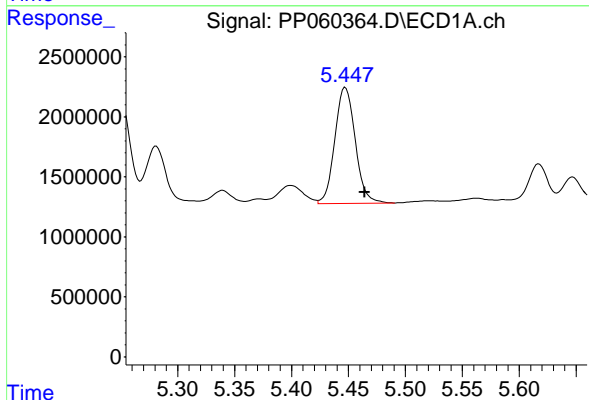
R.T.: 4.908 min
 Delta R.T.: -0.018 min
 Response: 7348975
 Conc: 145.99 ng/ml

Instrument :
 ECD_P
 ClientSampleId :



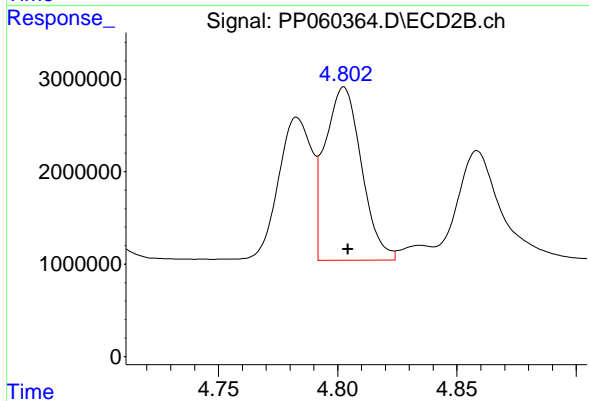
#11 AR-1232-1

R.T.: 4.065 min
 Delta R.T.: -0.002 min
 Response: 5515358
 Conc: 151.56 ng/ml



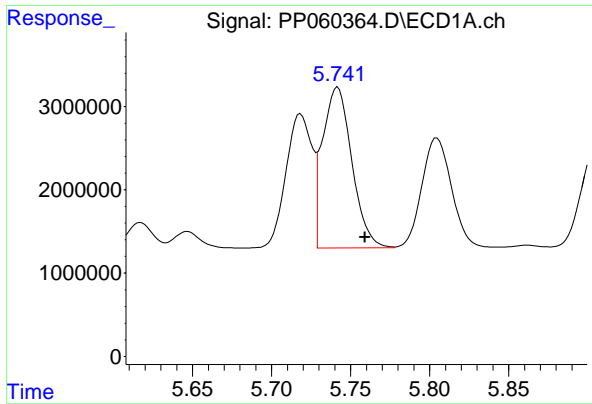
#12 AR-1232-2

R.T.: 5.447 min
 Delta R.T.: -0.017 min
 Response: 12051564
 Conc: 440.11 ng/ml



#12 AR-1232-2

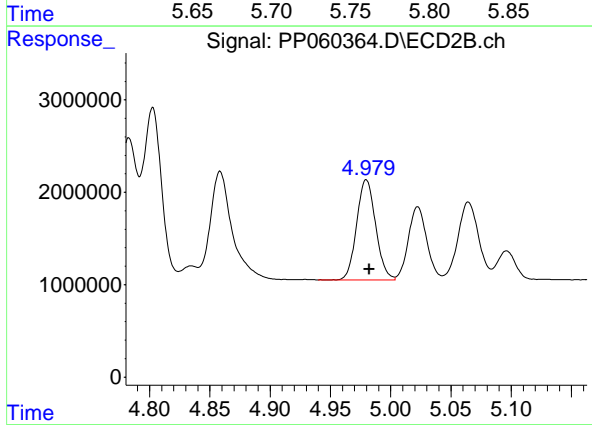
R.T.: 4.803 min
 Delta R.T.: -0.002 min
 Response: 19917284
 Conc: 546.15 ng/ml



#13 AR-1232-3

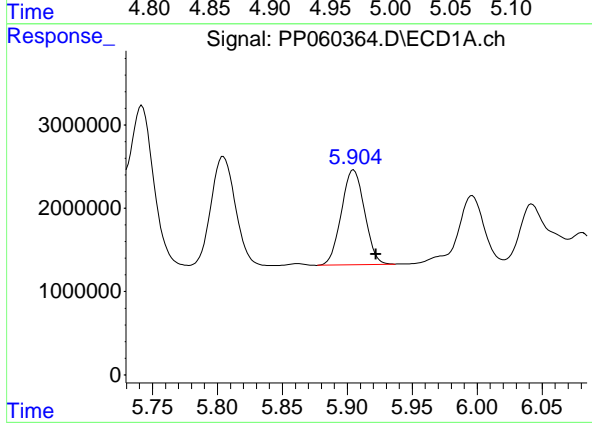
R.T.: 5.742 min
 Delta R.T.: -0.017 min
 Response: 24921860
 Conc: 536.91 ng/ml

Instrument :
 ECD_P
 ClientSampleId :



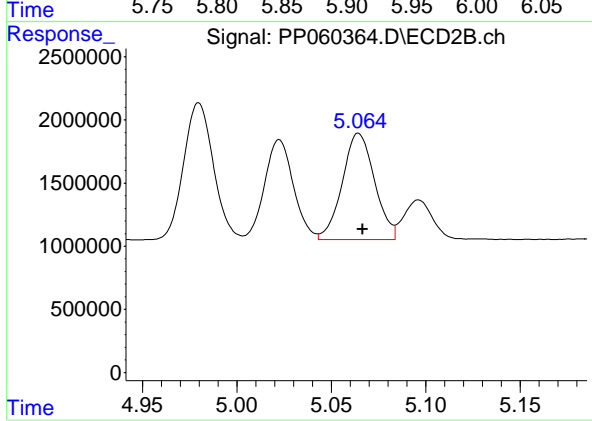
#13 AR-1232-3

R.T.: 4.980 min
 Delta R.T.: -0.002 min
 Response: 11870146
 Conc: 593.05 ng/ml



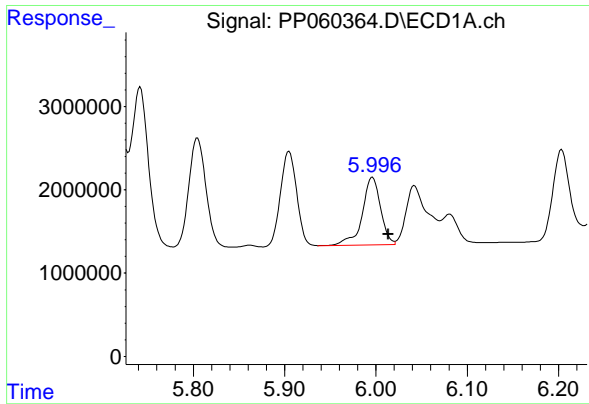
#14 AR-1232-4

R.T.: 5.905 min
 Delta R.T.: -0.017 min
 Response: 14149636
 Conc: 575.67 ng/ml



#14 AR-1232-4

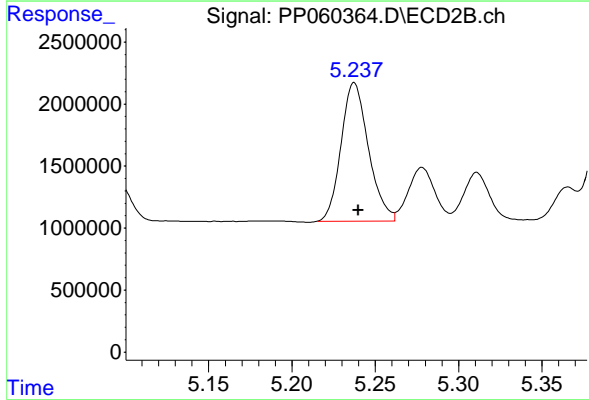
R.T.: 5.064 min
 Delta R.T.: -0.002 min
 Response: 10031153
 Conc: 537.45 ng/ml



#15 AR-1232-5

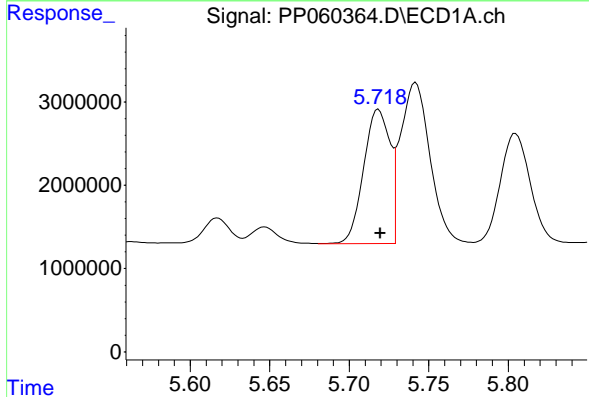
R.T.: 5.996 min
 Delta R.T.: -0.017 min
 Response: 11301587
 Conc: 545.40 ng/ml

Instrument :
 ECD_P
 ClientSampleId :



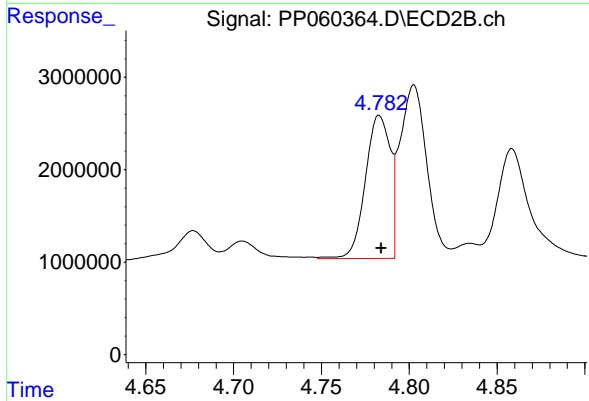
#15 AR-1232-5

R.T.: 5.237 min
 Delta R.T.: -0.002 min
 Response: 12757378
 Conc: 613.35 ng/ml



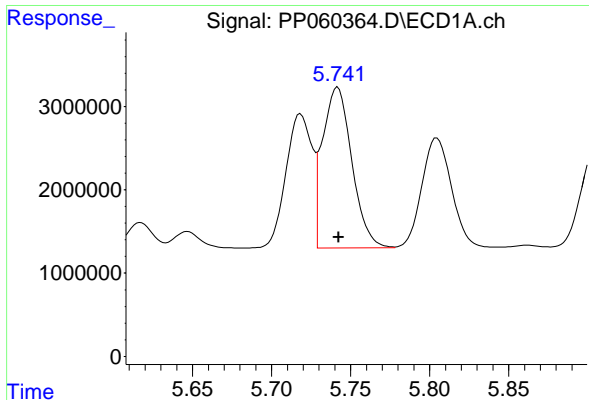
#16 AR-1242-1

R.T.: 5.718 min
 Delta R.T.: 0.000 min
 Response: 18493167
 Conc: 289.38 ng/ml



#16 AR-1242-1

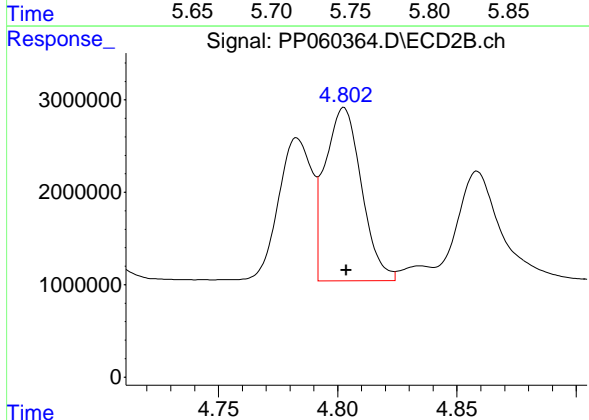
R.T.: 4.783 min
 Delta R.T.: -0.001 min
 Response: 15258191
 Conc: 301.38 ng/ml



#17 AR-1242-2

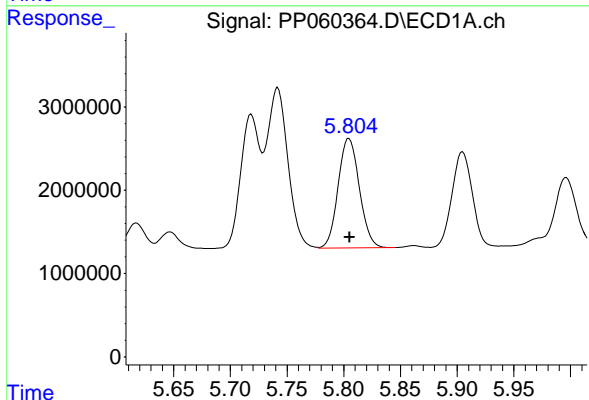
R.T.: 5.742 min
 Delta R.T.: 0.000 min
 Response: 24921860
 Conc: 275.24 ng/ml

Instrument :
 ECD_P
 ClientSampleId :



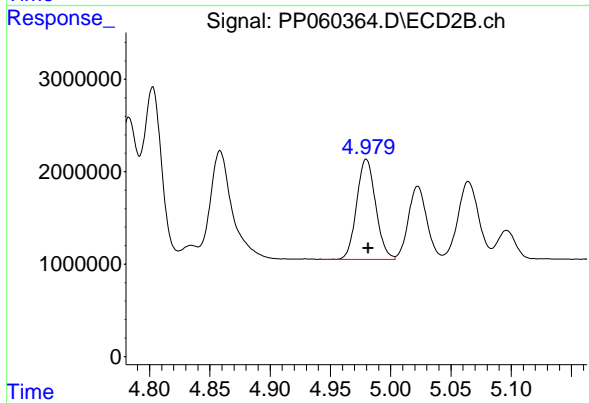
#17 AR-1242-2

R.T.: 4.803 min
 Delta R.T.: 0.000 min
 Response: 19917284
 Conc: 286.81 ng/ml



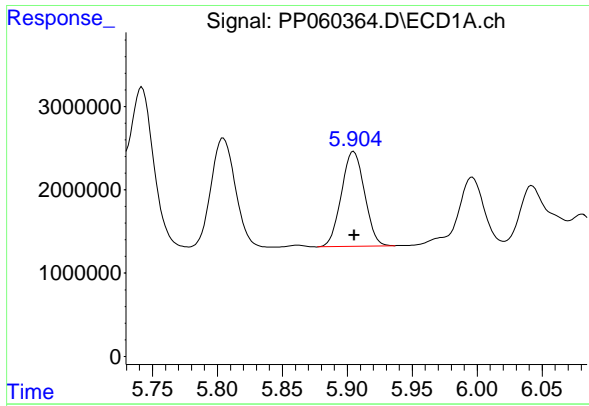
#18 AR-1242-3

R.T.: 5.805 min
 Delta R.T.: 0.000 min
 Response: 17099460
 Conc: 303.72 ng/ml



#18 AR-1242-3

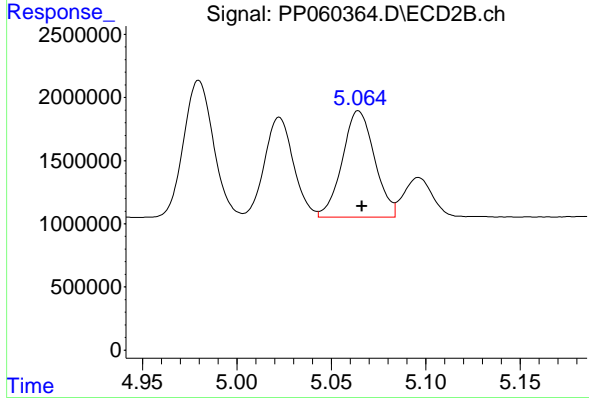
R.T.: 4.980 min
 Delta R.T.: -0.002 min
 Response: 11870146
 Conc: 308.23 ng/ml



#19 AR-1242-4

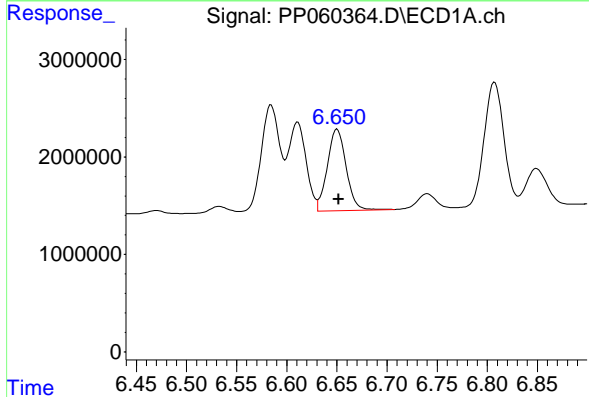
R.T.: 5.905 min
 Delta R.T.: 0.000 min
 Response: 14149636
 Conc: 302.95 ng/ml

Instrument :
 ECD_P
 ClientSampleId :



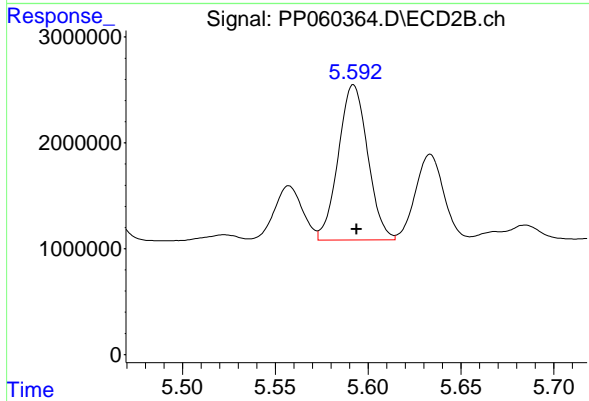
#19 AR-1242-4

R.T.: 5.064 min
 Delta R.T.: -0.002 min
 Response: 10031153
 Conc: 254.71 ng/ml



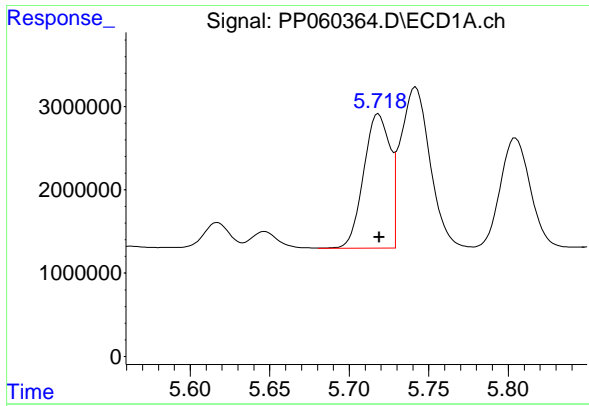
#20 AR-1242-5

R.T.: 6.650 min
 Delta R.T.: -0.001 min
 Response: 10893697
 Conc: 216.59 ng/ml



#20 AR-1242-5

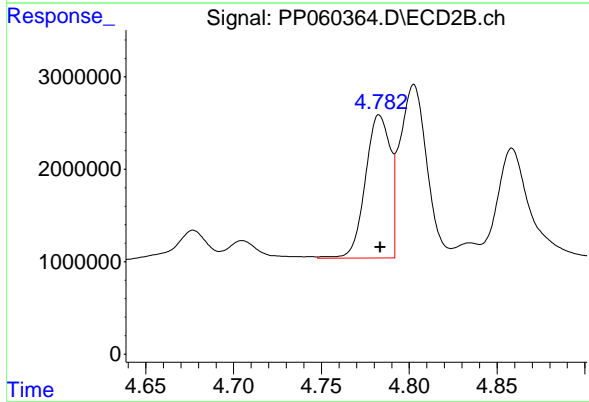
R.T.: 5.592 min
 Delta R.T.: -0.002 min
 Response: 16162805
 Conc: 330.41 ng/ml



#21 AR-1248-1

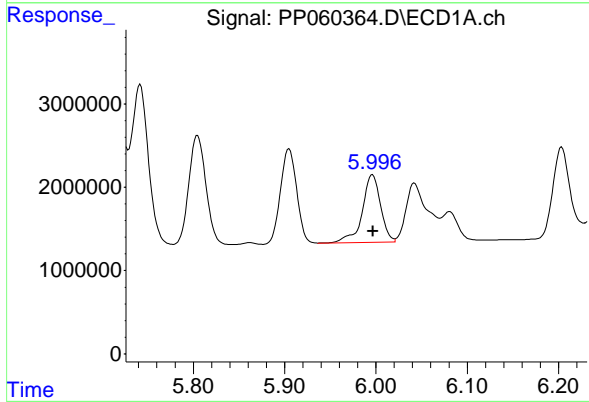
R.T.: 5.718 min
 Delta R.T.: 0.000 min
 Response: 18493167
 Conc: 397.49 ng/ml

Instrument :
 ECD_P
 ClientSampleId :



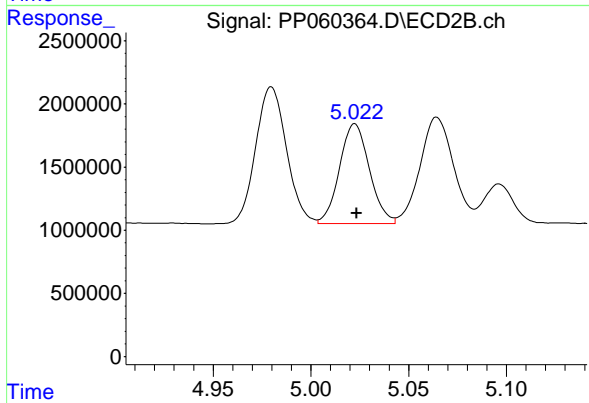
#21 AR-1248-1

R.T.: 4.783 min
 Delta R.T.: 0.000 min
 Response: 15258191
 Conc: 418.11 ng/ml



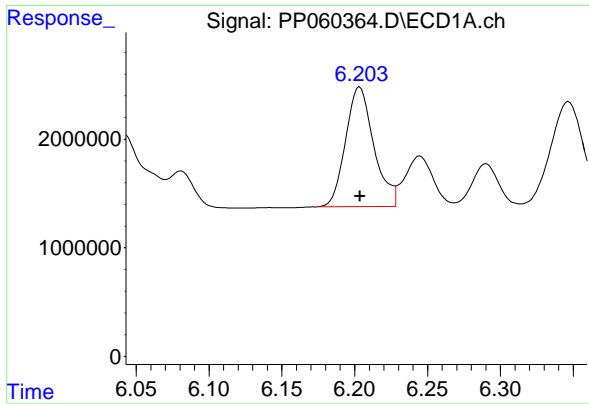
#22 AR-1248-2

R.T.: 5.996 min
 Delta R.T.: 0.000 min
 Response: 11301587
 Conc: 163.00 ng/ml



#22 AR-1248-2

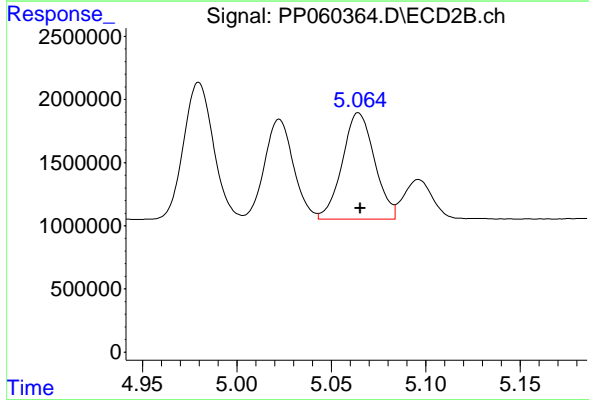
R.T.: 5.022 min
 Delta R.T.: 0.000 min
 Response: 8419427
 Conc: 161.07 ng/ml



#23 AR-1248-3

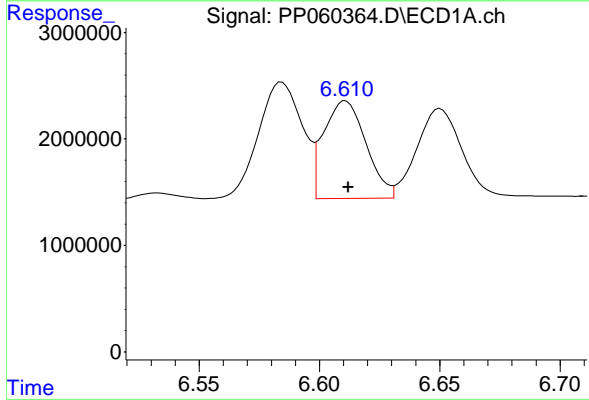
R.T.: 6.203 min
 Delta R.T.: 0.000 min
 Response: 14882590
 Conc: 195.95 ng/ml

Instrument :
 ECD_P
 ClientSampleId :



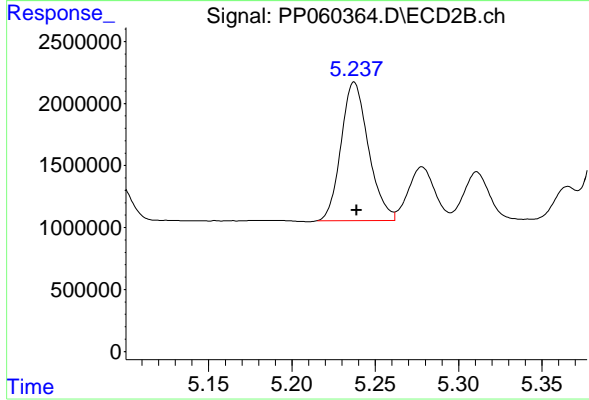
#23 AR-1248-3

R.T.: 5.064 min
 Delta R.T.: 0.000 min
 Response: 10031153
 Conc: 180.66 ng/ml



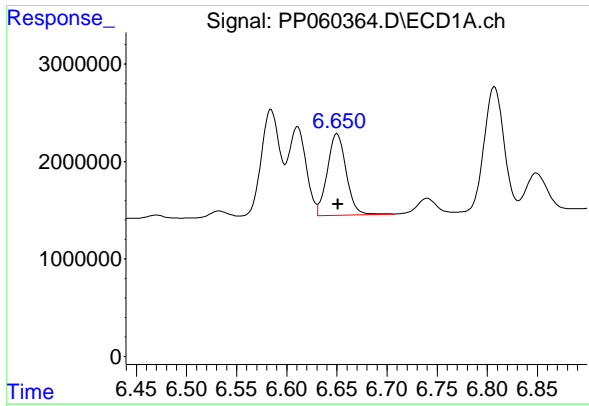
#24 AR-1248-4

R.T.: 6.611 min
 Delta R.T.: 0.000 min
 Response: 11235959
 Conc: 135.85 ng/ml



#24 AR-1248-4

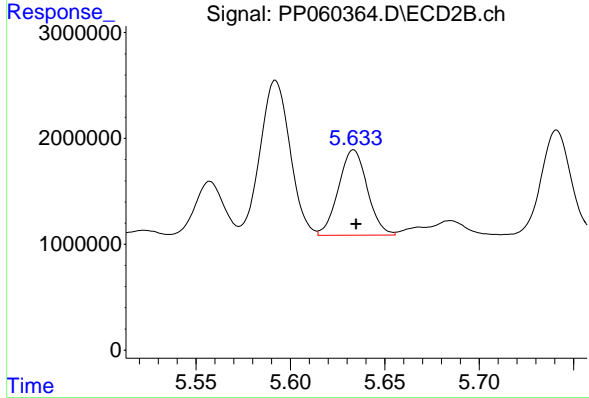
R.T.: 5.237 min
 Delta R.T.: -0.001 min
 Response: 12757378
 Conc: 193.80 ng/ml



#25 AR-1248-5

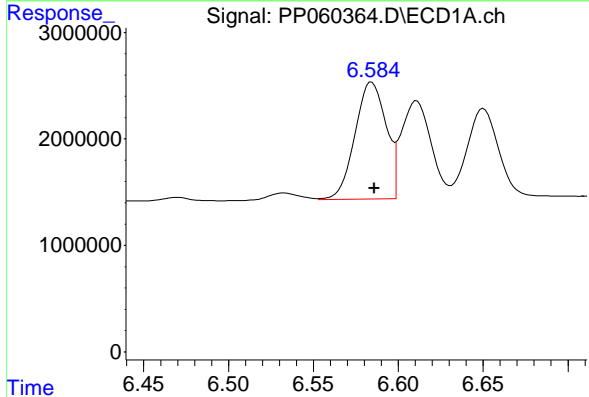
R.T.: 6.650 min
 Delta R.T.: 0.000 min
 Response: 10893697
 Conc: 135.35 ng/ml

Instrument :
 ECD_P
 ClientSampleId :



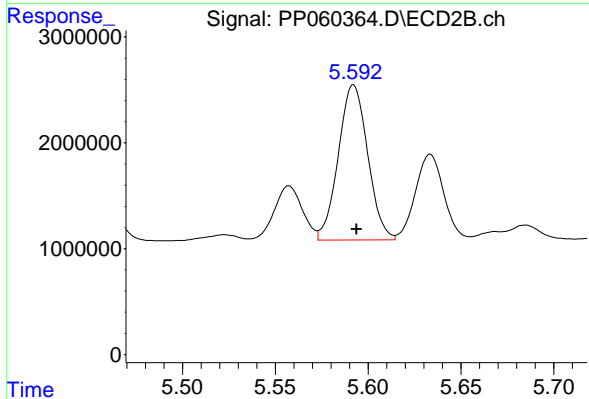
#25 AR-1248-5

R.T.: 5.633 min
 Delta R.T.: -0.001 min
 Response: 8582239
 Conc: 133.43 ng/ml



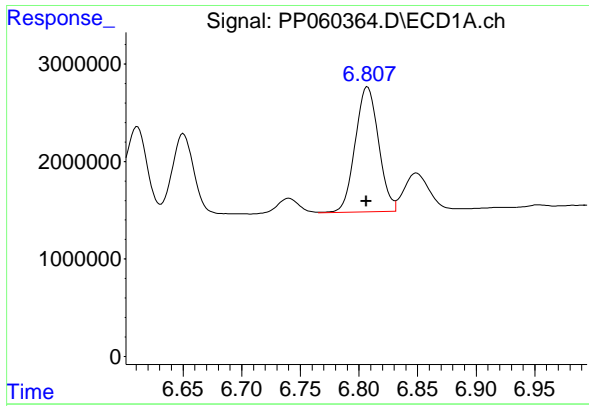
#26 AR-1254-1

R.T.: 6.584 min
 Delta R.T.: -0.002 min
 Response: 14039609
 Conc: 164.51 ng/ml



#26 AR-1254-1

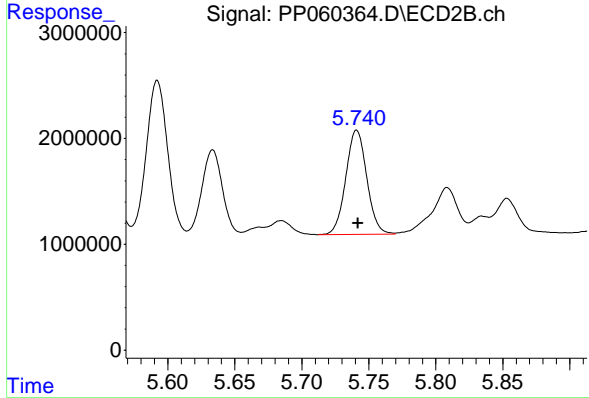
R.T.: 5.592 min
 Delta R.T.: -0.002 min
 Response: 16162805
 Conc: 163.39 ng/ml



#27 AR-1254-2

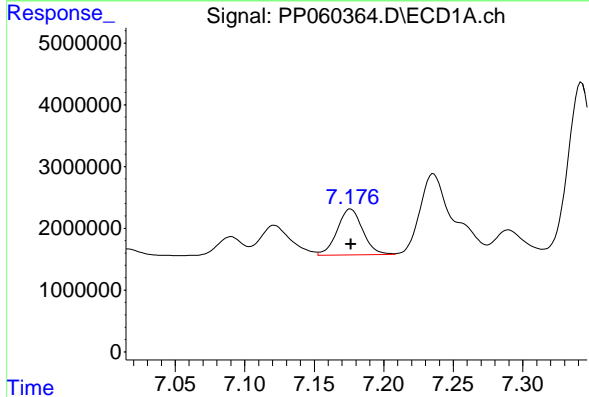
R.T.: 6.807 min
 Delta R.T.: 0.001 min
 Response: 17766262
 Conc: 139.21 ng/ml

Instrument :
 ECD_P
 ClientSampleId :



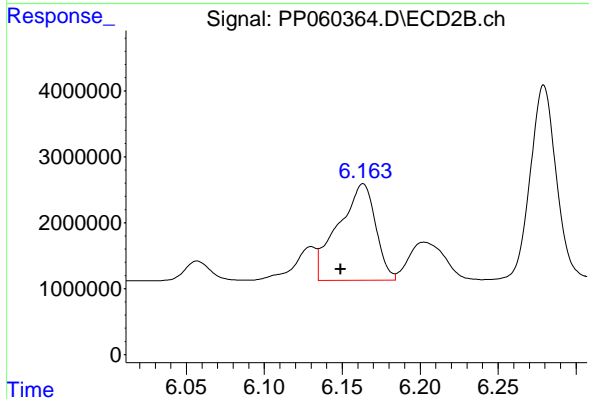
#27 AR-1254-2

R.T.: 5.741 min
 Delta R.T.: 0.000 min
 Response: 10690333
 Conc: 124.39 ng/ml



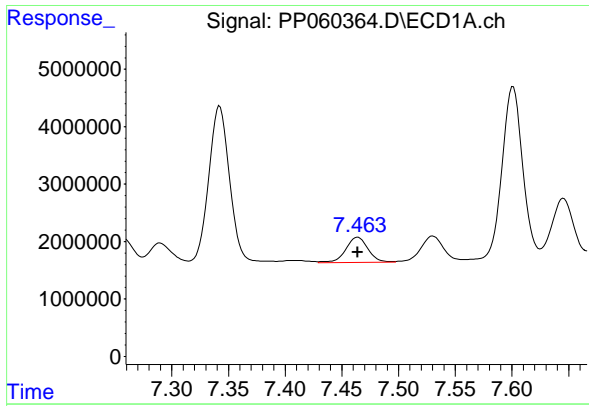
#28 AR-1254-3

R.T.: 7.176 min
 Delta R.T.: 0.000 min
 Response: 9497661
 Conc: 71.46 ng/ml



#28 AR-1254-3

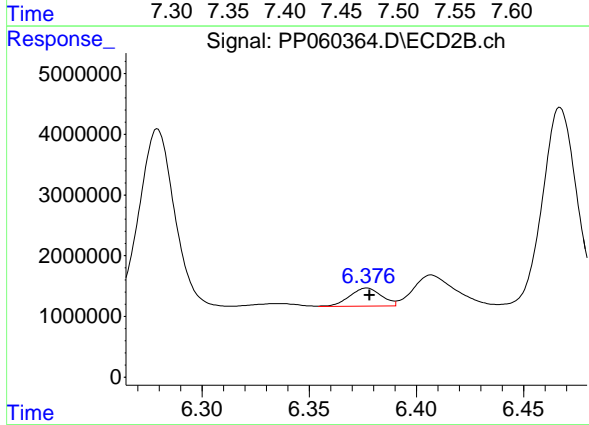
R.T.: 6.163 min
 Delta R.T.: 0.014 min
 Response: 24325797
 Conc: 169.72 ng/ml



#29 AR-1254-4

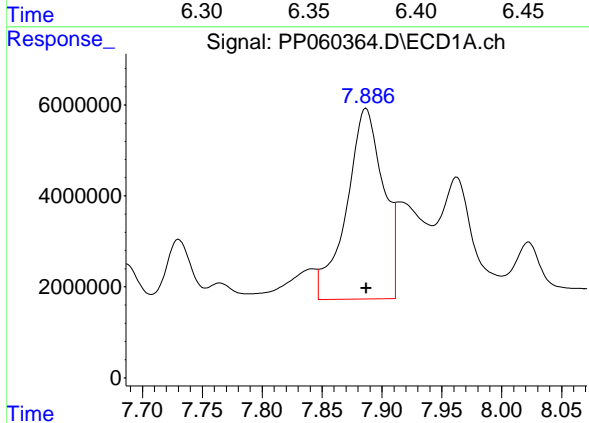
R.T.: 7.464 min
 Delta R.T.: 0.000 min
 Response: 6053571
 Conc: 61.56 ng/ml

Instrument :
 ECD_P
 ClientSampleId :



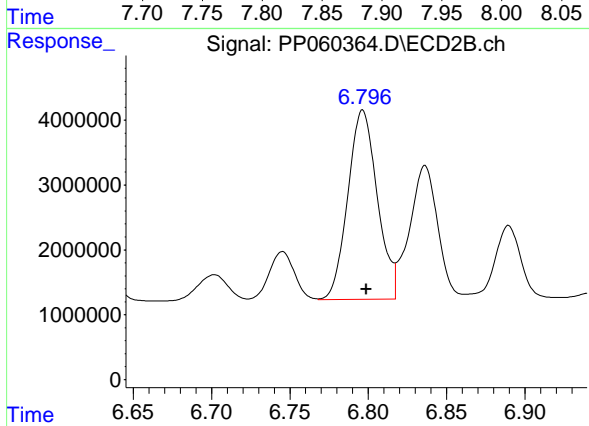
#29 AR-1254-4

R.T.: 6.377 min
 Delta R.T.: -0.001 min
 Response: 3058770
 Conc: 35.09 ng/ml



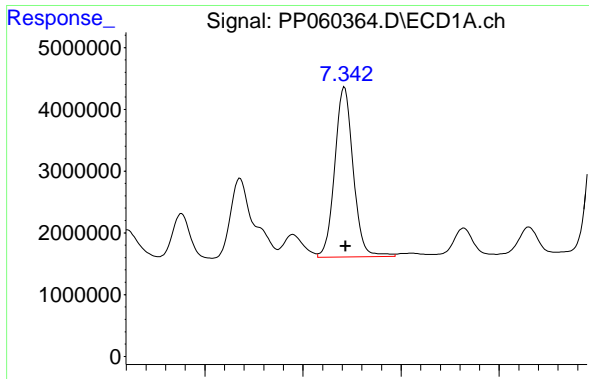
#30 AR-1254-5

R.T.: 7.887 min
 Delta R.T.: 0.000 min
 Response: 89037264
 Conc: 821.81 ng/ml



#30 AR-1254-5

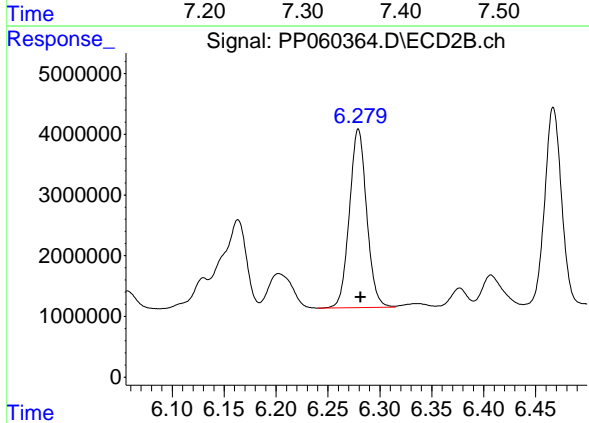
R.T.: 6.796 min
 Delta R.T.: -0.002 min
 Response: 38213277
 Conc: 301.56 ng/ml



#31 AR-1260-1

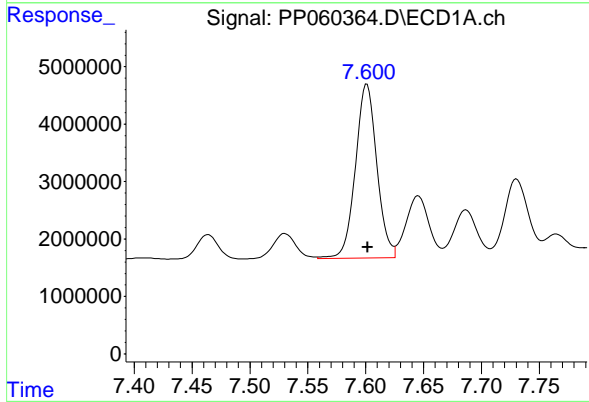
R.T.: 7.342 min
 Delta R.T.: -0.001 min
 Response: 35983995
 Conc: 343.28 ng/ml

Instrument :
 ECD_P
 ClientSampleId :



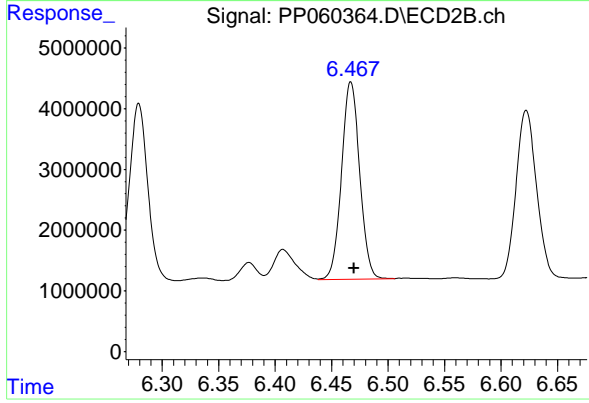
#31 AR-1260-1

R.T.: 6.279 min
 Delta R.T.: -0.002 min
 Response: 34045429
 Conc: 339.18 ng/ml



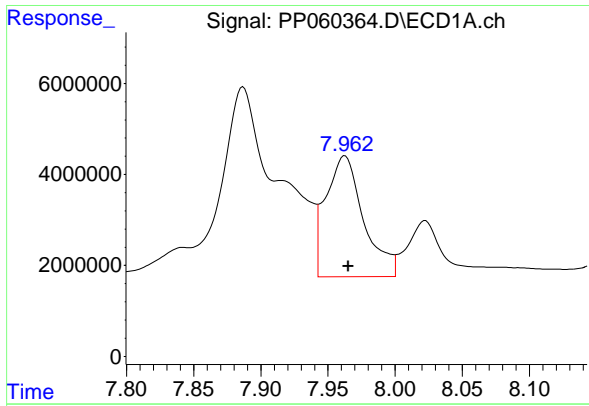
#32 AR-1260-2

R.T.: 7.601 min
 Delta R.T.: 0.000 min
 Response: 38951550
 Conc: 322.16 ng/ml



#32 AR-1260-2

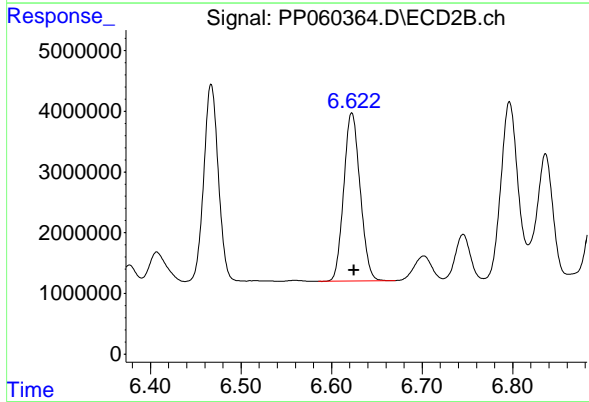
R.T.: 6.467 min
 Delta R.T.: -0.003 min
 Response: 36300198
 Conc: 304.26 ng/ml



#33 AR-1260-3

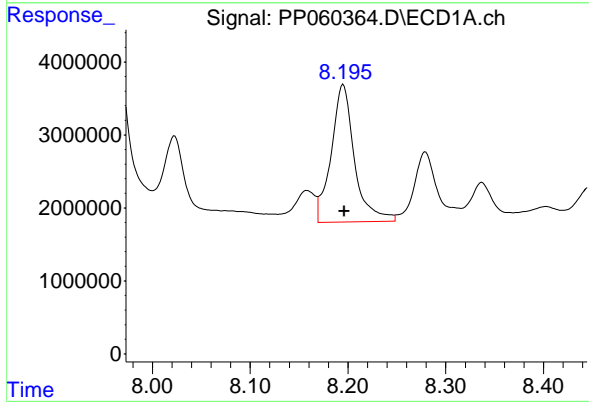
R.T.: 7.963 min
 Delta R.T.: -0.003 min
 Response: 52110333
 Conc: 562.20 ng/ml

Instrument :
 ECD_P
 ClientSampleId :



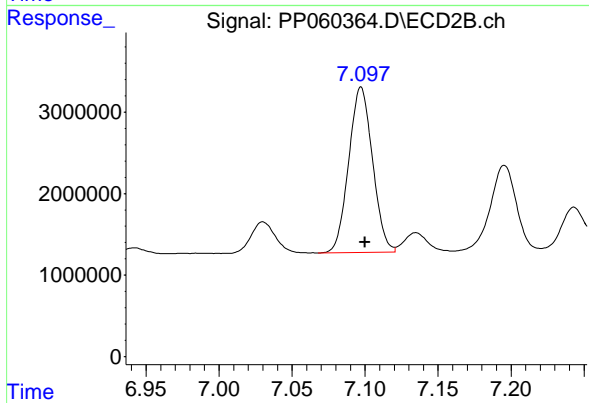
#33 AR-1260-3

R.T.: 6.622 min
 Delta R.T.: -0.002 min
 Response: 34807852
 Conc: 304.01 ng/ml



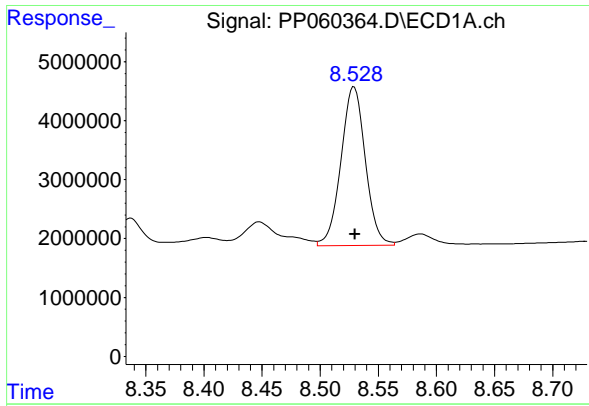
#34 AR-1260-4

R.T.: 8.195 min
 Delta R.T.: -0.001 min
 Response: 31267423
 Conc: 294.83 ng/ml



#34 AR-1260-4

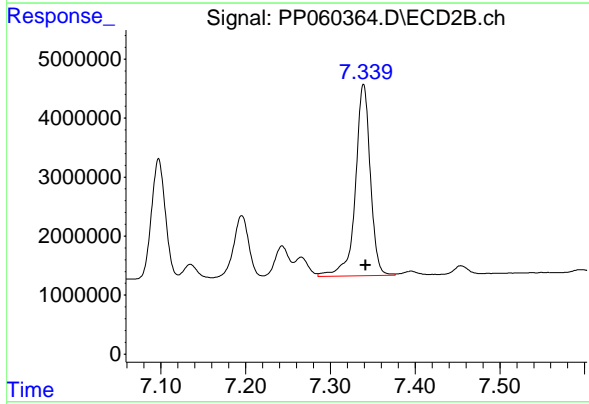
R.T.: 7.097 min
 Delta R.T.: -0.003 min
 Response: 23110823
 Conc: 242.81 ng/ml



#35 AR-1260-5

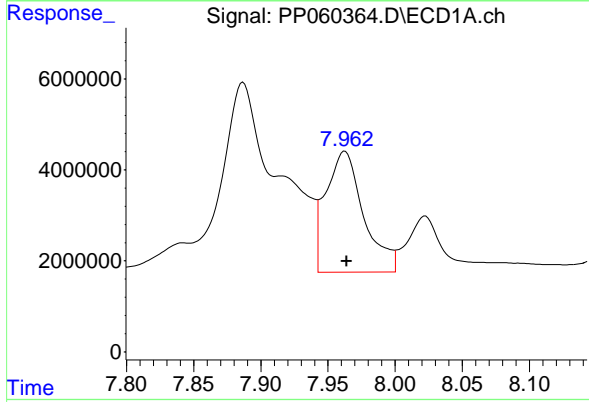
R.T.: 8.529 min
 Delta R.T.: 0.000 min
 Response: 39228035
 Conc: 202.71 ng/ml

Instrument :
 ECD_P
 ClientSampleId :



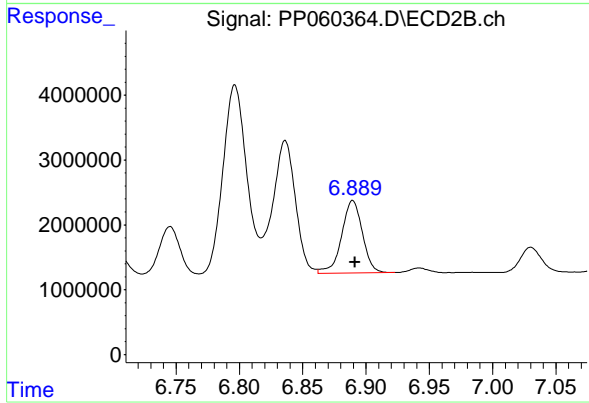
#35 AR-1260-5

R.T.: 7.339 min
 Delta R.T.: -0.002 min
 Response: 39590002
 Conc: 182.68 ng/ml



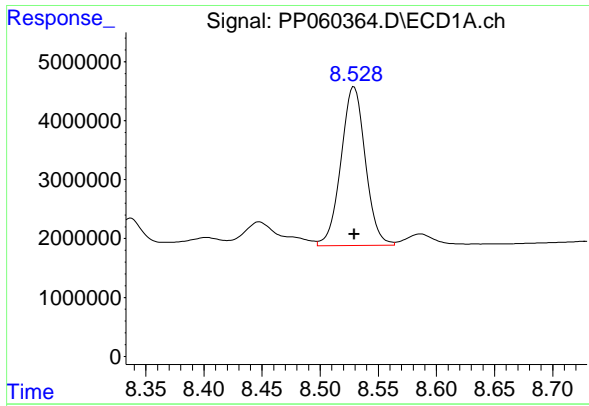
#36 AR-1262-1

R.T.: 7.963 min
 Delta R.T.: -0.001 min
 Response: 52110333
 Conc: 417.77 ng/ml



#36 AR-1262-1

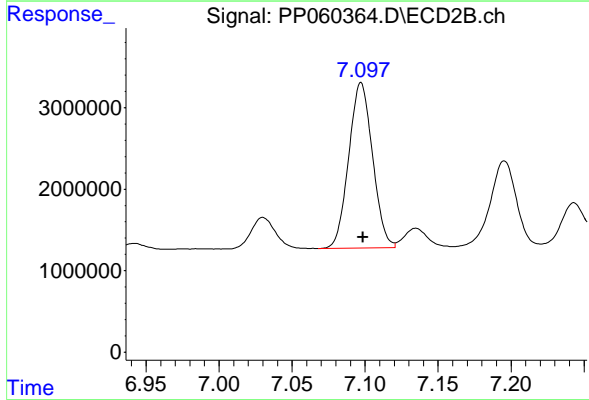
R.T.: 6.890 min
 Delta R.T.: -0.002 min
 Response: 12818779
 Conc: 239.39 ng/ml



#37 AR-1262-2

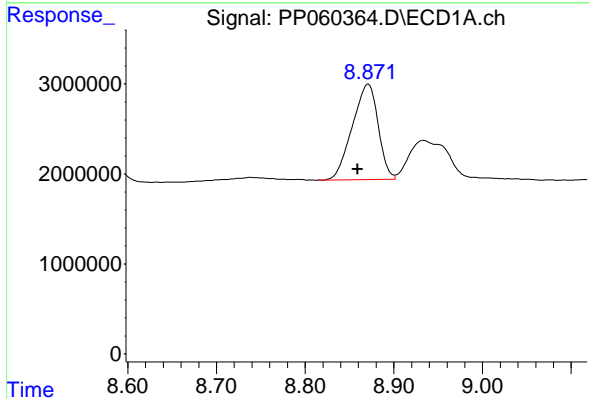
R.T.: 8.529 min
 Delta R.T.: 0.000 min
 Response: 39228035
 Conc: 187.26 ng/ml

Instrument :
 ECD_P
 ClientSampleId :



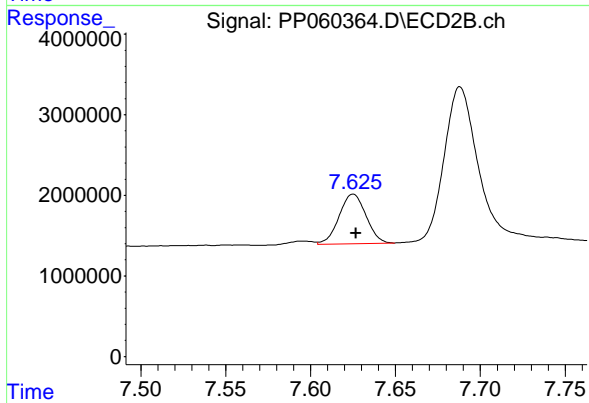
#37 AR-1262-2

R.T.: 7.097 min
 Delta R.T.: -0.001 min
 Response: 23110823
 Conc: 195.94 ng/ml



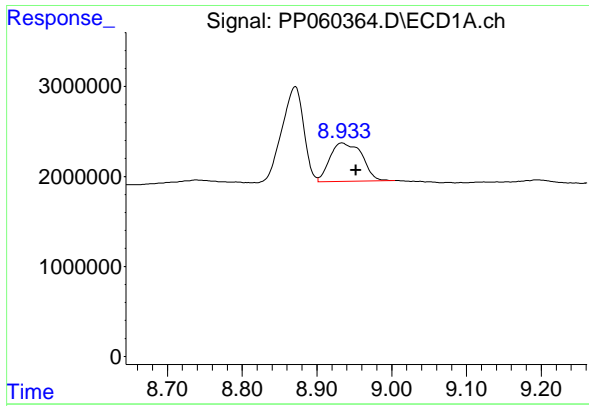
#38 AR-1262-3

R.T.: 8.871 min
 Delta R.T.: 0.012 min
 Response: 21503659
 Conc: 142.09 ng/ml



#38 AR-1262-3

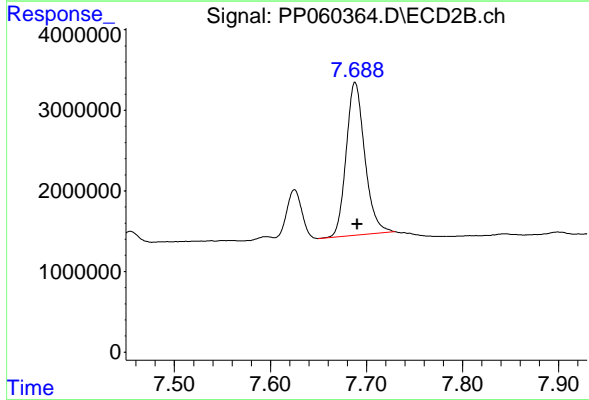
R.T.: 7.625 min
 Delta R.T.: -0.002 min
 Response: 6790108
 Conc: 73.64 ng/ml



#39 AR-1262-4

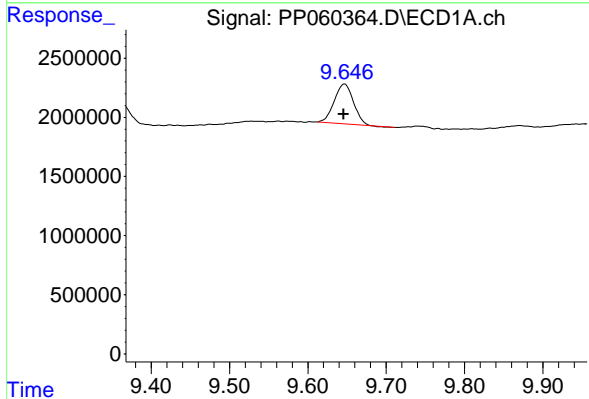
R.T.: 8.934 min
 Delta R.T.: -0.018 min
 Response: 12766279
 Conc: 106.67 ng/ml

Instrument :
 ECD_P
 ClientSampleId :



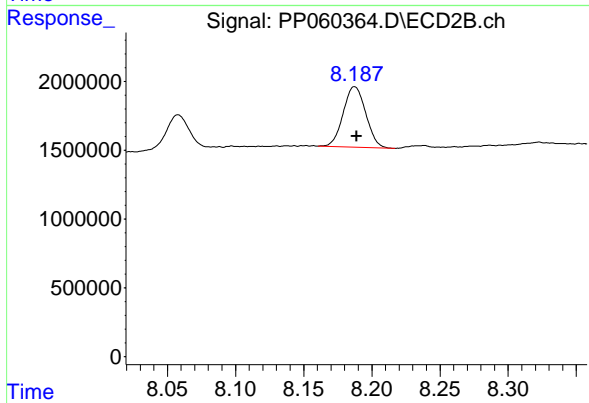
#39 AR-1262-4

R.T.: 7.688 min
 Delta R.T.: -0.003 min
 Response: 25485332
 Conc: 151.28 ng/ml



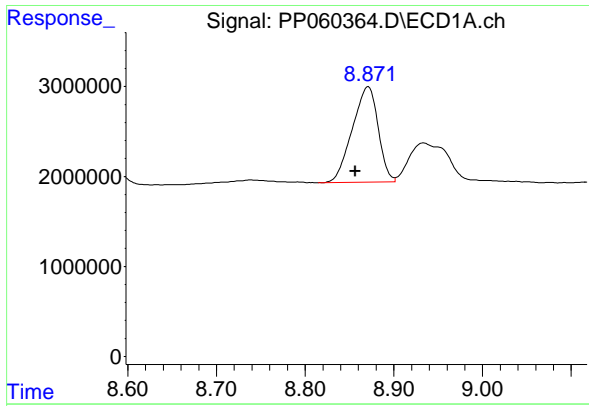
#40 AR-1262-5

R.T.: 9.647 min
 Delta R.T.: 0.000 min
 Response: 5777484
 Conc: 72.16 ng/ml



#40 AR-1262-5

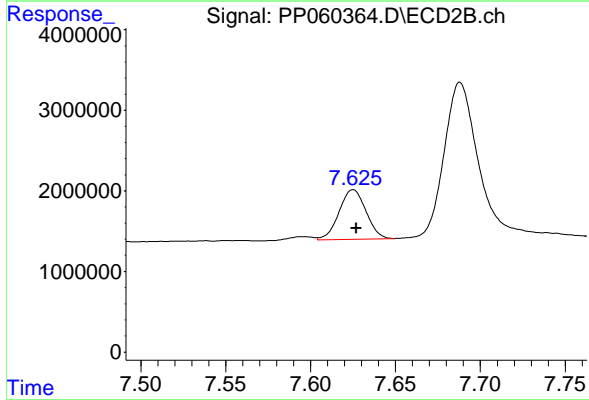
R.T.: 8.187 min
 Delta R.T.: -0.002 min
 Response: 5081759
 Conc: 65.59 ng/ml



#41 AR-1268-1

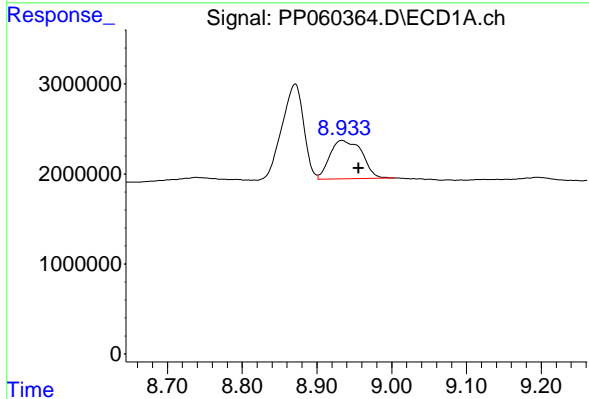
R.T.: 8.871 min
 Delta R.T.: 0.015 min
 Response: 21503659
 Conc: 81.05 ng/ml

Instrument :
 ECD_P
 ClientSampleId :



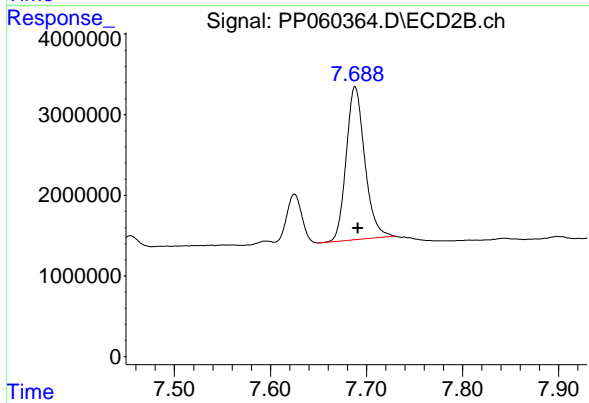
#41 AR-1268-1

R.T.: 7.625 min
 Delta R.T.: -0.002 min
 Response: 6790108
 Conc: 24.98 ng/ml



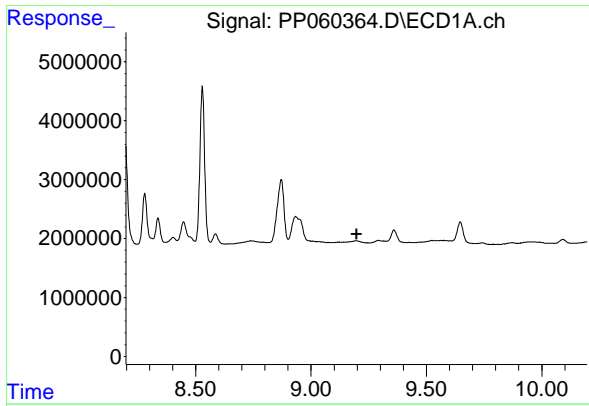
#42 AR-1268-2

R.T.: 8.934 min
 Delta R.T.: -0.022 min
 Response: 12766279
 Conc: 52.38 ng/ml



#42 AR-1268-2

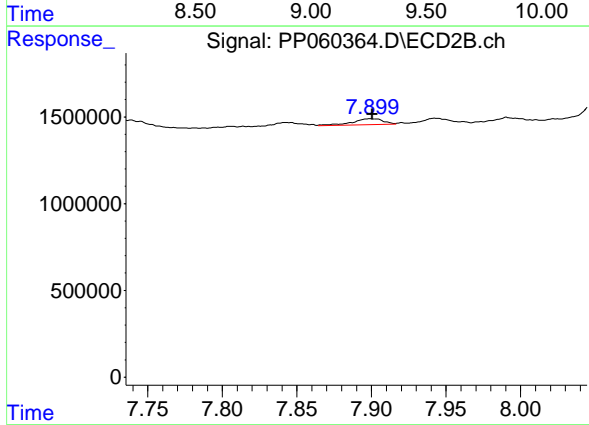
R.T.: 7.688 min
 Delta R.T.: -0.003 min
 Response: 25485332
 Conc: 104.50 ng/ml



#43 AR-1268-3

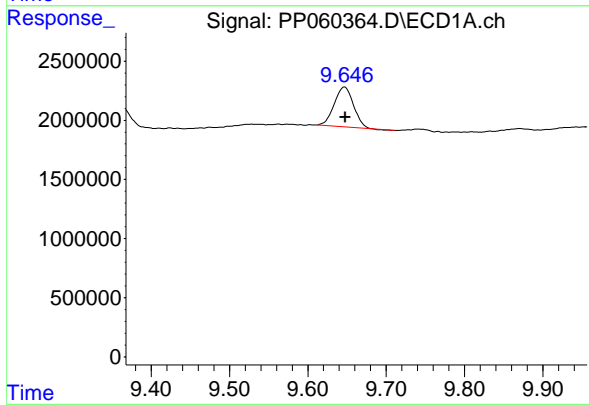
R.T.: 0.000 min
 Exp R.T.: 9.198 min
 Response: 0
 Conc: N.D.

Instrument :
 ECD_P
 ClientSampleId :



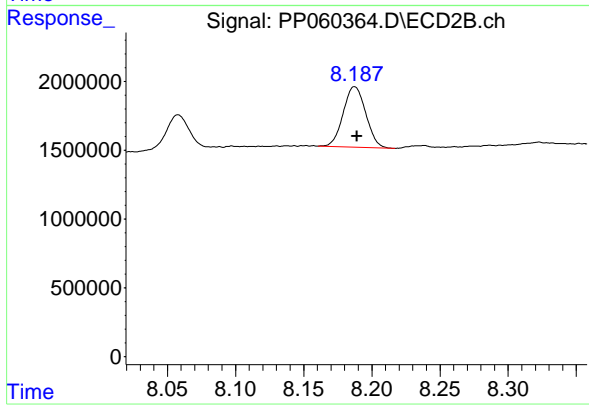
#43 AR-1268-3

R.T.: 7.899 min
 Delta R.T.: -0.001 min
 Response: 481887
 Conc: 2.25 ng/ml



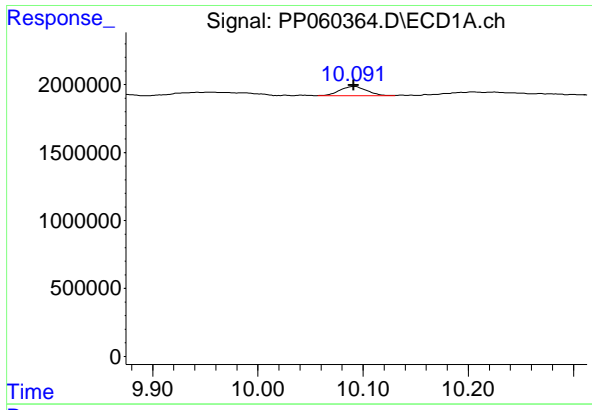
#44 AR-1268-4

R.T.: 9.647 min
 Delta R.T.: 0.000 min
 Response: 5777484
 Conc: 62.54 ng/ml



#44 AR-1268-4

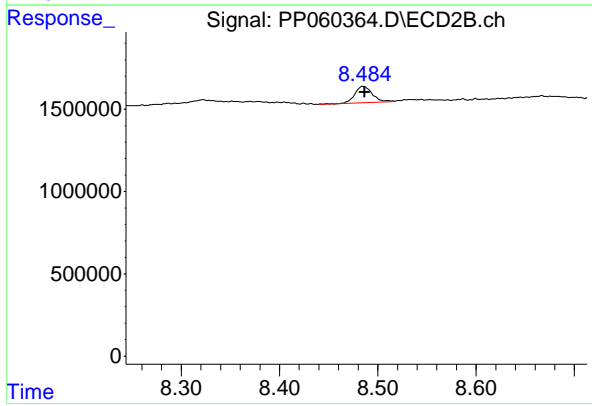
R.T.: 8.187 min
 Delta R.T.: -0.002 min
 Response: 5081759
 Conc: 57.92 ng/ml



#45 AR-1268-5

R.T.: 10.092 min
 Delta R.T.: 0.000 min
 Response: 1211605
 Conc: 1.91 ng/ml

Instrument :
 ECD_P
 ClientSampleId :



#45 AR-1268-5

R.T.: 8.485 min
 Delta R.T.: -0.002 min
 Response: 1251100
 Conc: 2.00 ng/ml