

Data Path : Z:\pestpcbsrv\HPCHEM1\ECD_P\Data\PP092921\
 Data File : PP039649.D
 Signal(s) : Signal #1: ECD1A.CH Signal #2: ECD2B.CH
 Acq On : 30 Sep 2021 4:27
 Operator : AJ\MA
 Sample : M3987-01
 Misc :
 ALS Vial : 39 Sample Multiplier: 1

Instrument :
 ECD_P
 ClientSampleId :
 SS02-NA

Integration File signal 1: autoint1.e
 Integration File signal 2: autoint2.e
 Quant Time: Sep 30 06:55:54 2021
 Quant Method : Z:\pestpcbsrv\HPCHEM1\ECD_P\methods\PP092421.M
 Quant Title : GC EXTRACTABLES
 QLast Update : Sat Sep 25 01:28:12 2021
 Response via : Initial Calibration
 Integrator: ChemStation 6890 Scale Mode: Small noise peaks clipped

Volume Inj. : 2 µl
 Signal #1 Phase : ZB-MR1 Signal #2 Phase: ZB-MR2
 Signal #1 Info : 30Mx0.32mmx 0.50µ Signal #2 Info : 30M x 0.32mm x 0.25µm

Compound	RT#1	RT#2	Resp#1	Resp#2	ng/ml	ng/ml

System Monitoring Compounds						
1) SA Tetrachlo...	4.905	3.994	658655	373484	20.806	22.921
2) SA Decachlor...	10.928	9.331	460959	477207	21.248	21.838
Target Compounds						
26) L6 AR-1254-1	7.139	6.137	70872	71154	64.930	68.343
27) L6 AR-1254-2	7.370	6.296	145569	61815	90.121	64.143 #
28) L6 AR-1254-3	7.762	6.721	199788	79358	120.075	52.753 #
29) L6 AR-1254-4	8.046	6.960	53323	45230	43.652	46.970
30) L6 AR-1254-5	8.476	7.392	124846	326731	98.397	232.130 #

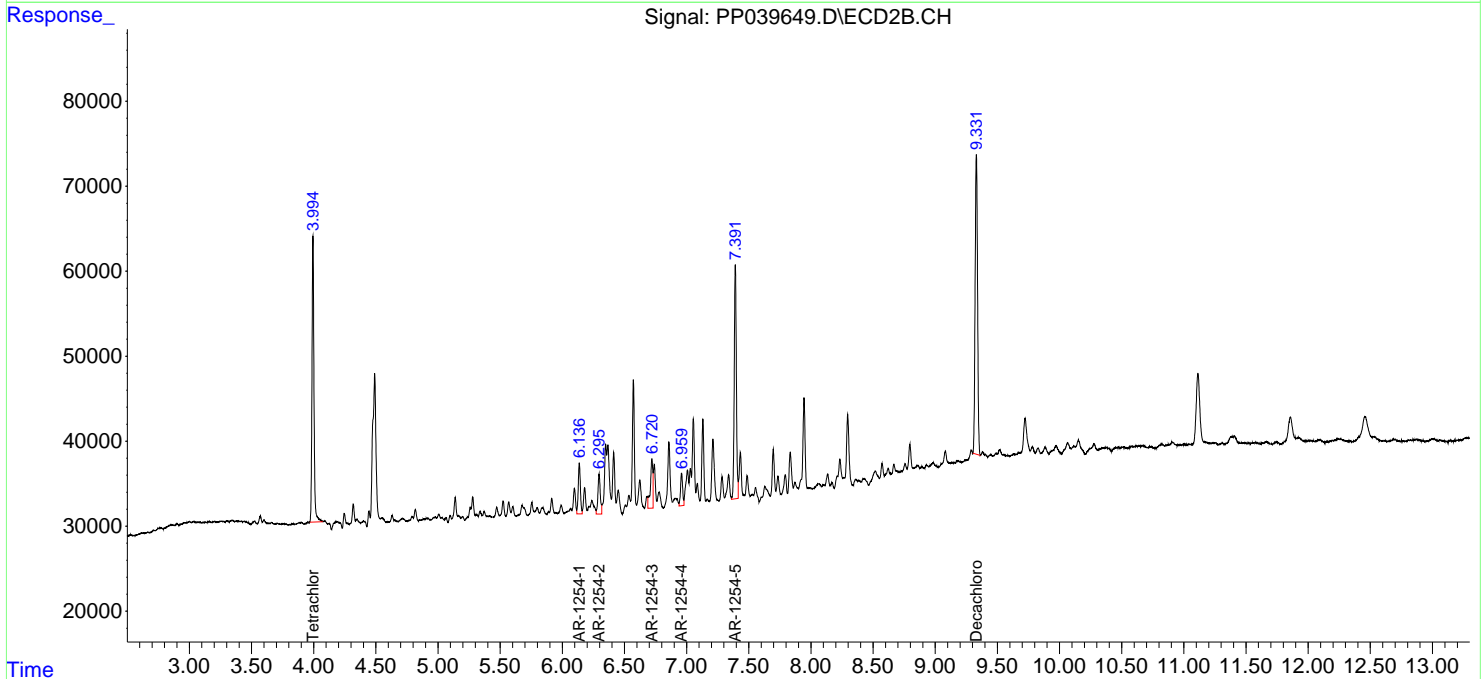
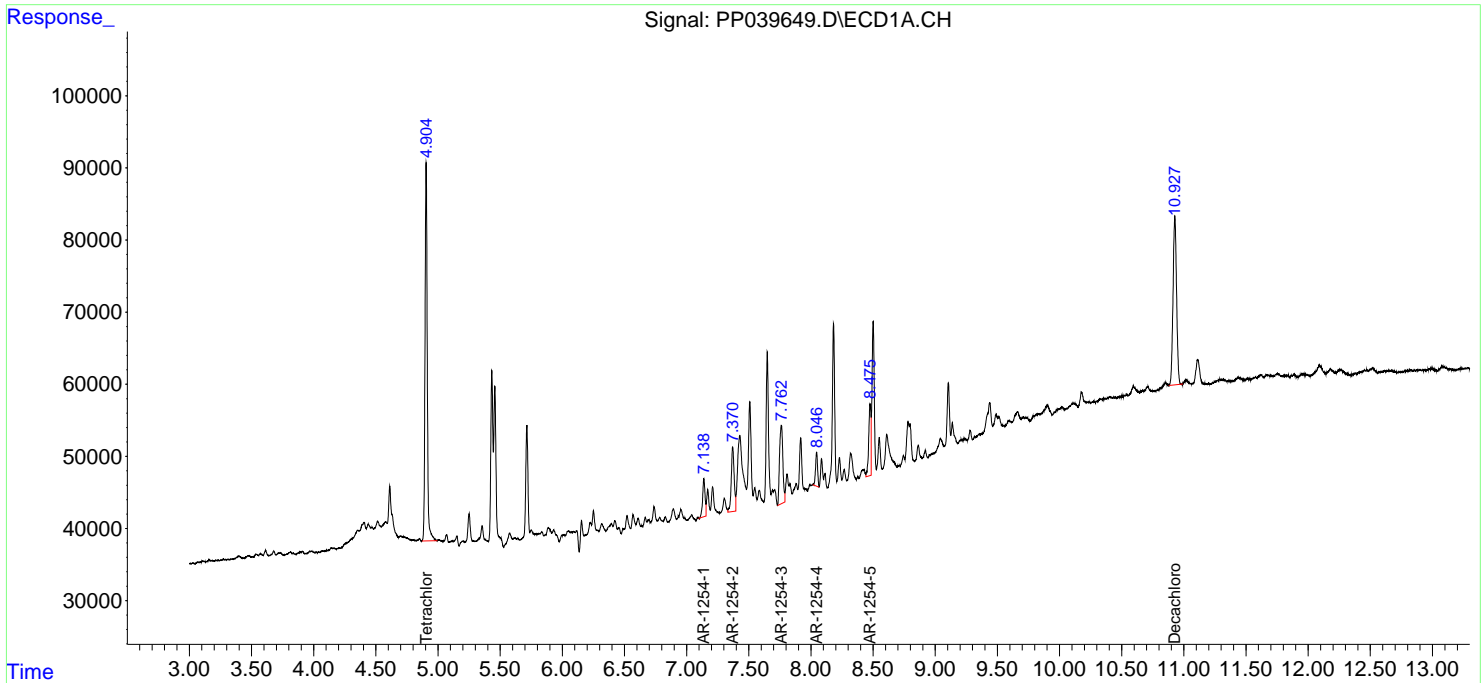
(f)=RT Delta > 1/2 Window (#)=Amounts differ by > 25% (m)=manual int.

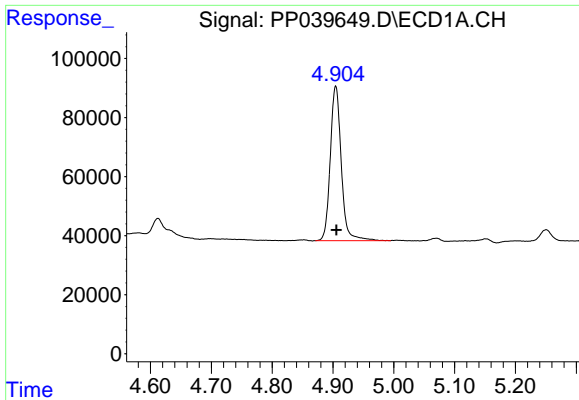
Data Path : Z:\pestpcbsrv\HPCHEM1\ECD_P\Data\PP092921\
 Data File : PP039649.D
 Signal(s) : Signal #1: ECD1A.CH Signal #2: ECD2B.CH
 Acq On : 30 Sep 2021 4:27
 Operator : AJ\MA
 Sample : M3987-01
 Misc :
 ALS Vial : 39 Sample Multiplier: 1

Instrument :
 ECD_P
 ClientSampleId :
 SS02-NA

Integration File signal 1: autoint1.e
 Integration File signal 2: autoint2.e
 Quant Time: Sep 30 06:55:54 2021
 Quant Method : Z:\pestpcbsrv\HPCHEM1\ECD_P\methods\PP092421.M
 Quant Title : GC EXTRACTABLES
 QLast Update : Sat Sep 25 01:28:12 2021
 Response via : Initial Calibration
 Integrator: ChemStation 6890 Scale Mode: Small noise peaks clipped

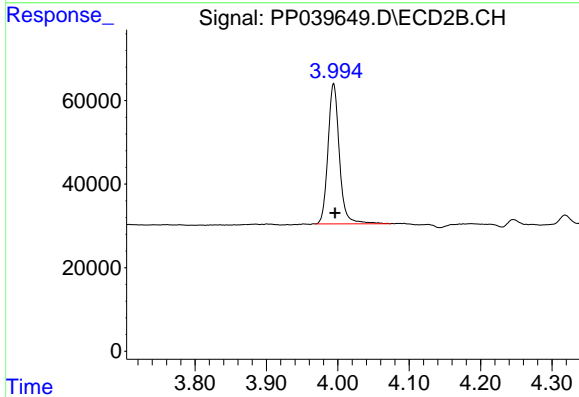
Volume Inj. : 2 µl
 Signal #1 Phase : ZB-MR1 Signal #2 Phase: ZB-MR2
 Signal #1 Info : 30Mx0.32mmx 0.50µ Signal #2 Info : 30M x 0.32mm x 0.25µm



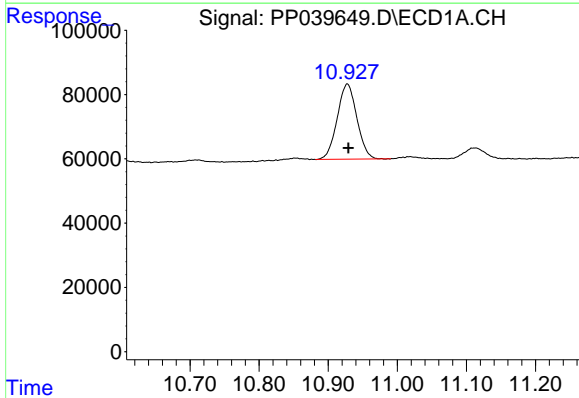


#1 Tetrachloro-m-xylene
 R.T.: 4.905 min
 Delta R.T.: -0.001 min
 Response: 658655
 Conc: 20.81 ng/ml

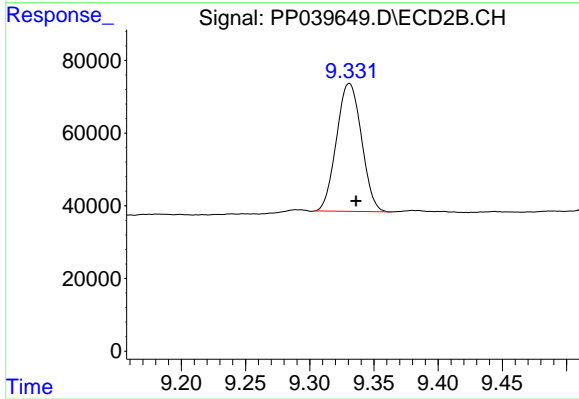
Instrument :
 ECD_P
 ClientSampleId :
 SS02-NA



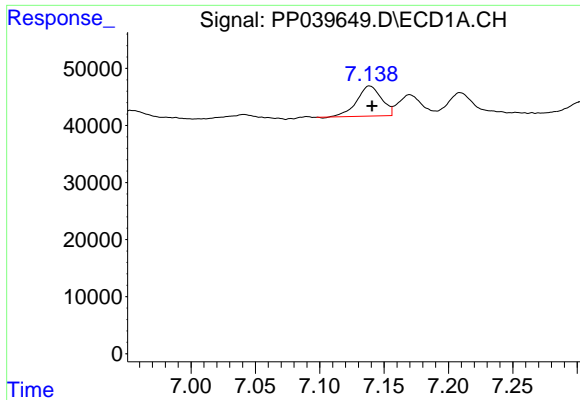
#1 Tetrachloro-m-xylene
 R.T.: 3.994 min
 Delta R.T.: -0.002 min
 Response: 373484
 Conc: 22.92 ng/ml



#2 Decachlorobiphenyl
 R.T.: 10.928 min
 Delta R.T.: -0.002 min
 Response: 460959
 Conc: 21.25 ng/ml



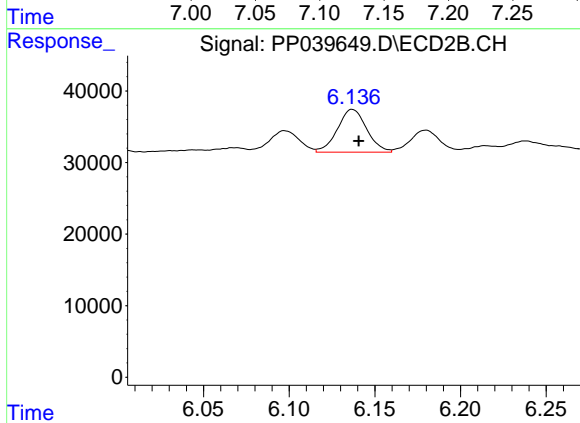
#2 Decachlorobiphenyl
 R.T.: 9.331 min
 Delta R.T.: -0.005 min
 Response: 477207
 Conc: 21.84 ng/ml



#26 AR-1254-1

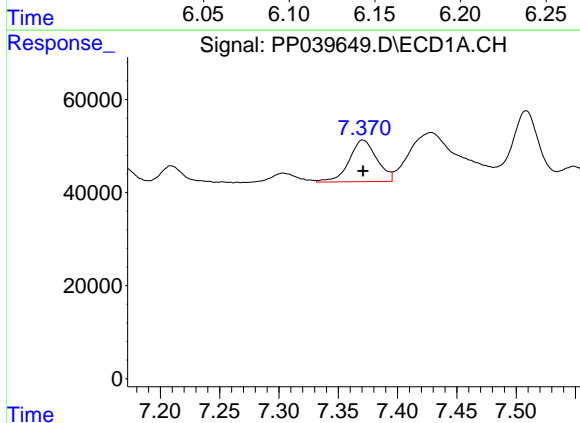
R.T.: 7.139 min
 Delta R.T.: -0.002 min
 Response: 70872
 Conc: 64.93 ng/ml

Instrument :
 ECD_P
 ClientSampleId :
 SS02-NA



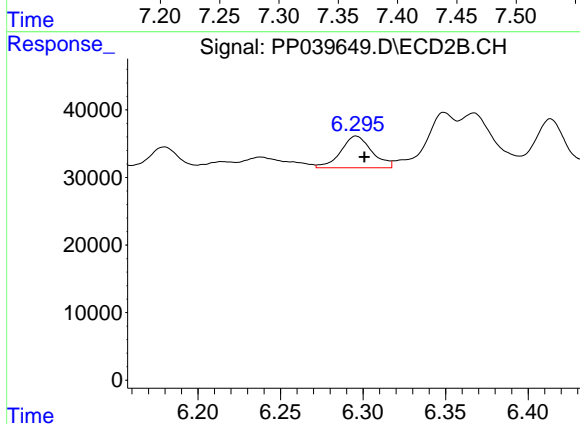
#26 AR-1254-1

R.T.: 6.137 min
 Delta R.T.: -0.004 min
 Response: 71154
 Conc: 68.34 ng/ml



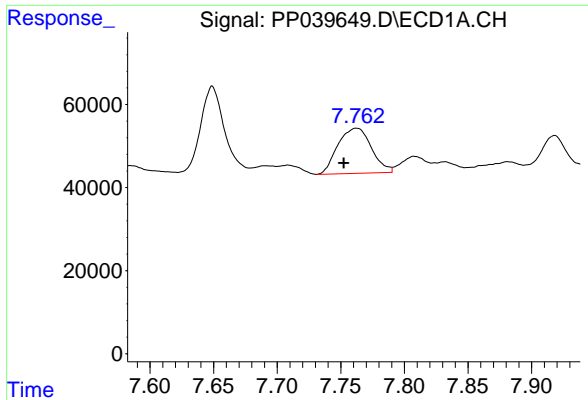
#27 AR-1254-2

R.T.: 7.370 min
 Delta R.T.: 0.000 min
 Response: 145569
 Conc: 90.12 ng/ml



#27 AR-1254-2

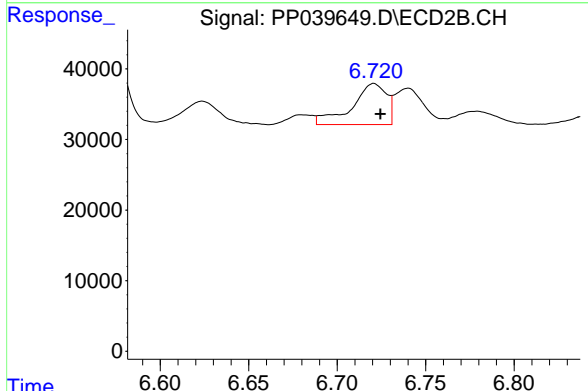
R.T.: 6.296 min
 Delta R.T.: -0.005 min
 Response: 61815
 Conc: 64.14 ng/ml



#28 AR-1254-3

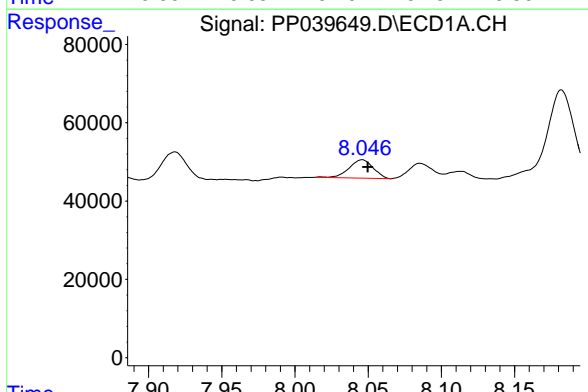
R.T.: 7.762 min
 Delta R.T.: 0.010 min
 Response: 199788
 Conc: 120.08 ng/ml

Instrument :
 ECD_P
ClientSampled :
 SS02-NA



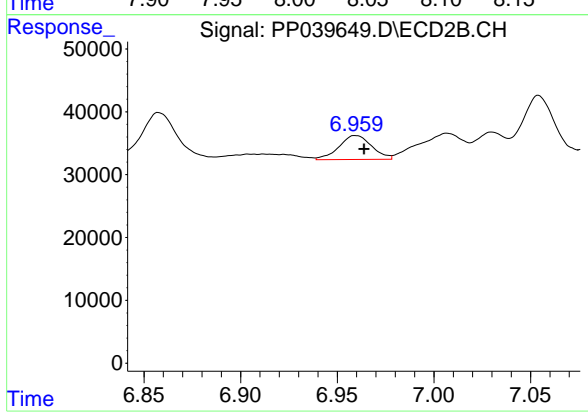
#28 AR-1254-3

R.T.: 6.721 min
 Delta R.T.: -0.004 min
 Response: 79358
 Conc: 52.75 ng/ml



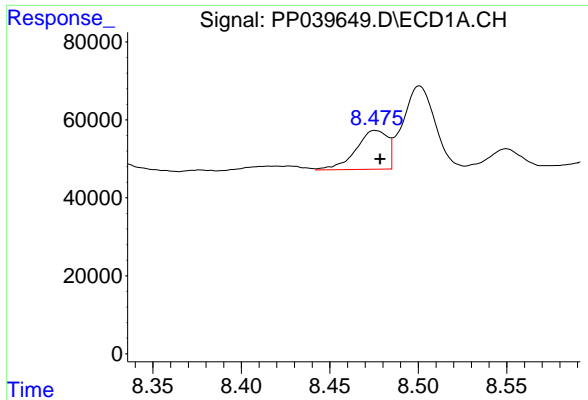
#29 AR-1254-4

R.T.: 8.046 min
 Delta R.T.: -0.004 min
 Response: 53323
 Conc: 43.65 ng/ml



#29 AR-1254-4

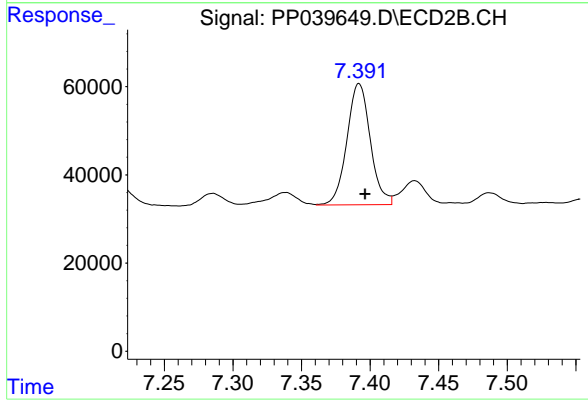
R.T.: 6.960 min
 Delta R.T.: -0.004 min
 Response: 45230
 Conc: 46.97 ng/ml



#30 AR-1254-5

R.T.: 8.476 min
Delta R.T.: -0.003 min
Response: 124846
Conc: 98.40 ng/ml

Instrument :
ECD_P
ClientSampled :
SS02-NA



#30 AR-1254-5

R.T.: 7.392 min
Delta R.T.: -0.004 min
Response: 326731
Conc: 232.13 ng/ml